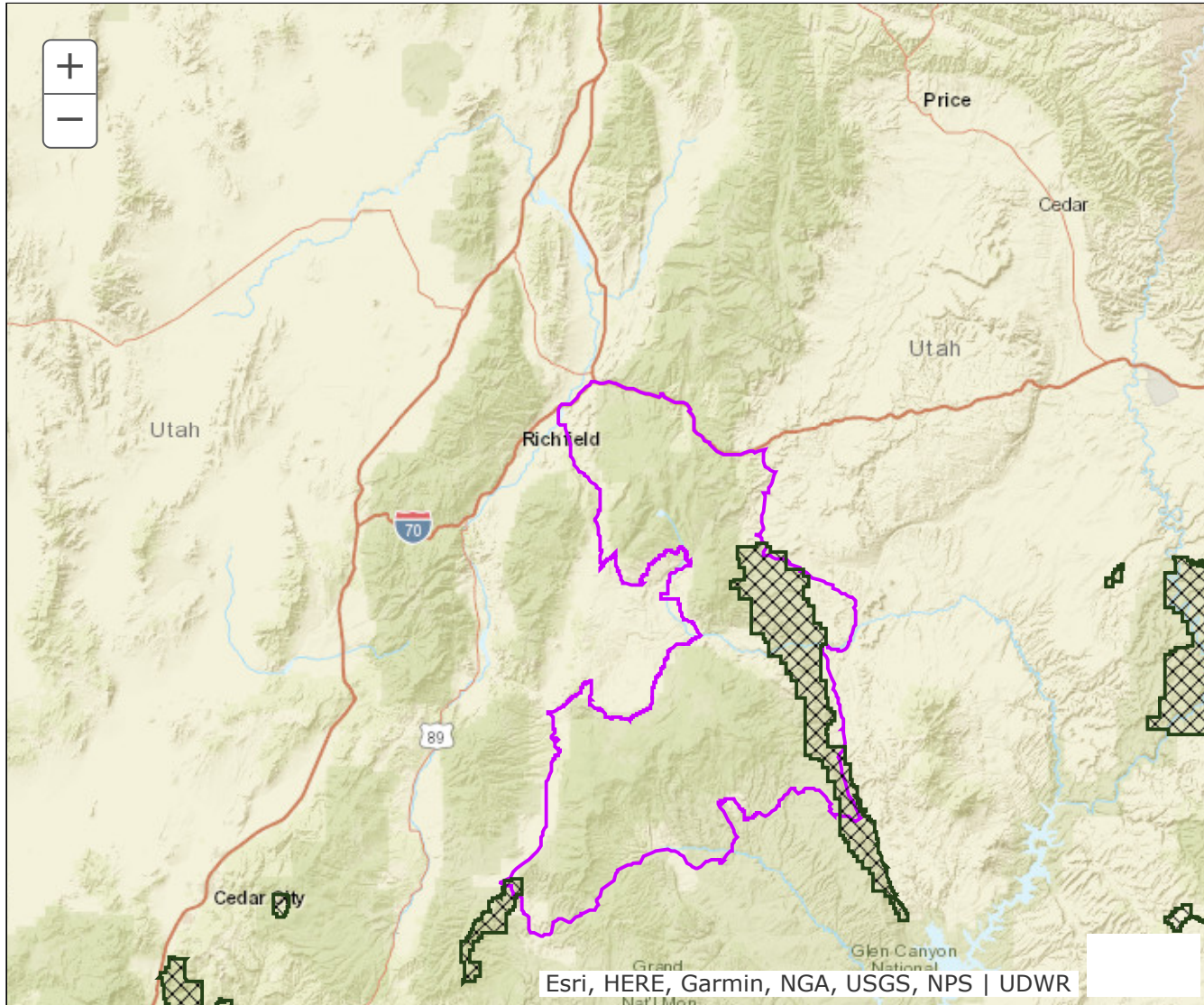


BOUNDARY RECOMMENDATION

UNIT Plateau, Highlands

SPECIES Pronghorn



Updated Boundary: Garfield, Piute, Sevier and Wayne counties—Boundary begins at I-70 and US-89 north of Sigurd; south on US-89 to SR-24; south on SR-24 to SR-25; east on SR-25 to Fishlake Road; south on this road to SR-24; east on SR-24 to North Mountain Road; north on this road to Vance Road; east on this road to CR-4087; north-east on CR-4087 to the Fremont River Road; south on this road to SR-72; south on SR-72 to SR-24; south on SR-24 to Hatchery Road; west on this road to Smooth Knoll Road; south on this road to NF-157 (USFS road), west on NF-157 to NF-571, west on NF-571 to NF-139; north on NF-139 to NF-85; north-west on NF-85 to Wildcat Road; north on this road to Parker-Antimony Road; west on this road to the Widtsoe-Antimony road; south on this road to SR-12; east on SR-12 to the Burr Trail at Boulder; east on the Burr Trail to the Notom road; north on the Notom road to SR-24; east on SR-24 to the Caineville Wash road; north along this road to the Cathedral Valley road; west on this road to Rock Springs Bench and the Last Chance Desert road; north on this road to the Blue Flats road; north and east on this road to the Willow Springs road; north on this road towards Windy Peak and the Windy Peak road; west on this road to SR-72;

north on SR-72 to I-70; west on I-70 to US-89 north of Sigurd. EXCLUDES ALL NATIONAL PARKS.