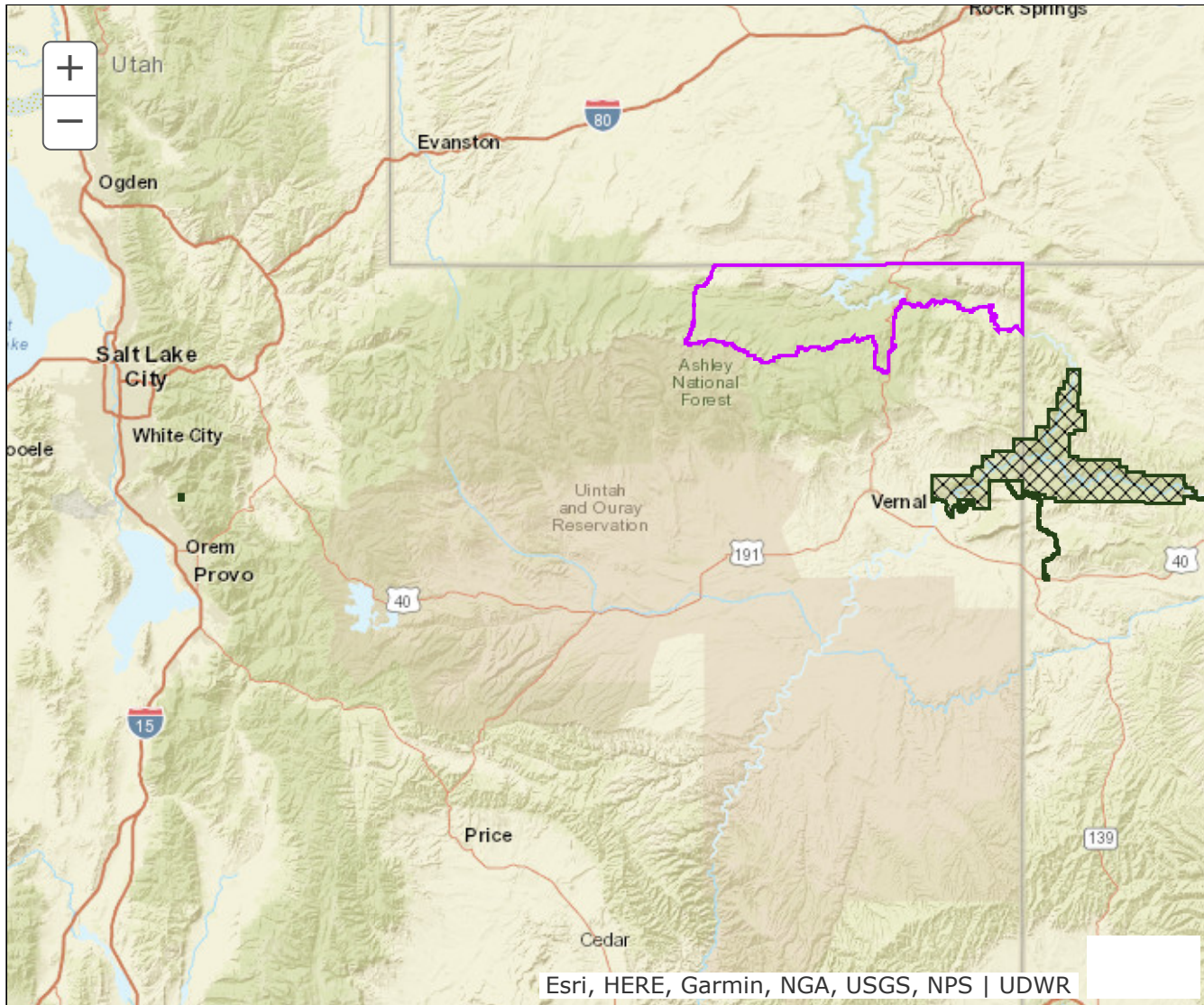


## BOUNDARY RECOMMENDATION

**UNIT** North Slope, Three Corners/West Daggett

**SPECIES** Pronghorn



**Updated Boundary:** Daggett and Summit counties—Boundary begins at the Utah-Wyoming-Colorado state line (Three Corners); south on the Utah-Colorado state line to the Green River; west along the Green River to Flaming Gorge Reservoir; west along the south shoreline of Flaming Gorge Reservoir to Cart Creek; south along this creek to US-191; south on US-191 to the Uintah/Daggett county line (summit of the Uinta Mountains); west along this summit to the head of Burnt Fork drainage (Divide Pass/Island Lake); north along the Burnt Fork drainage bottom and Burnt Fork Creek to the Utah-Wyoming state line; east on this state line to the Utah-Wyoming-Colorado state line (Three Corners). USGS 1:100,000 Maps: Dutch John, Kings Peak. Boundary questions? Call the Vernal office, 435-781-9453.