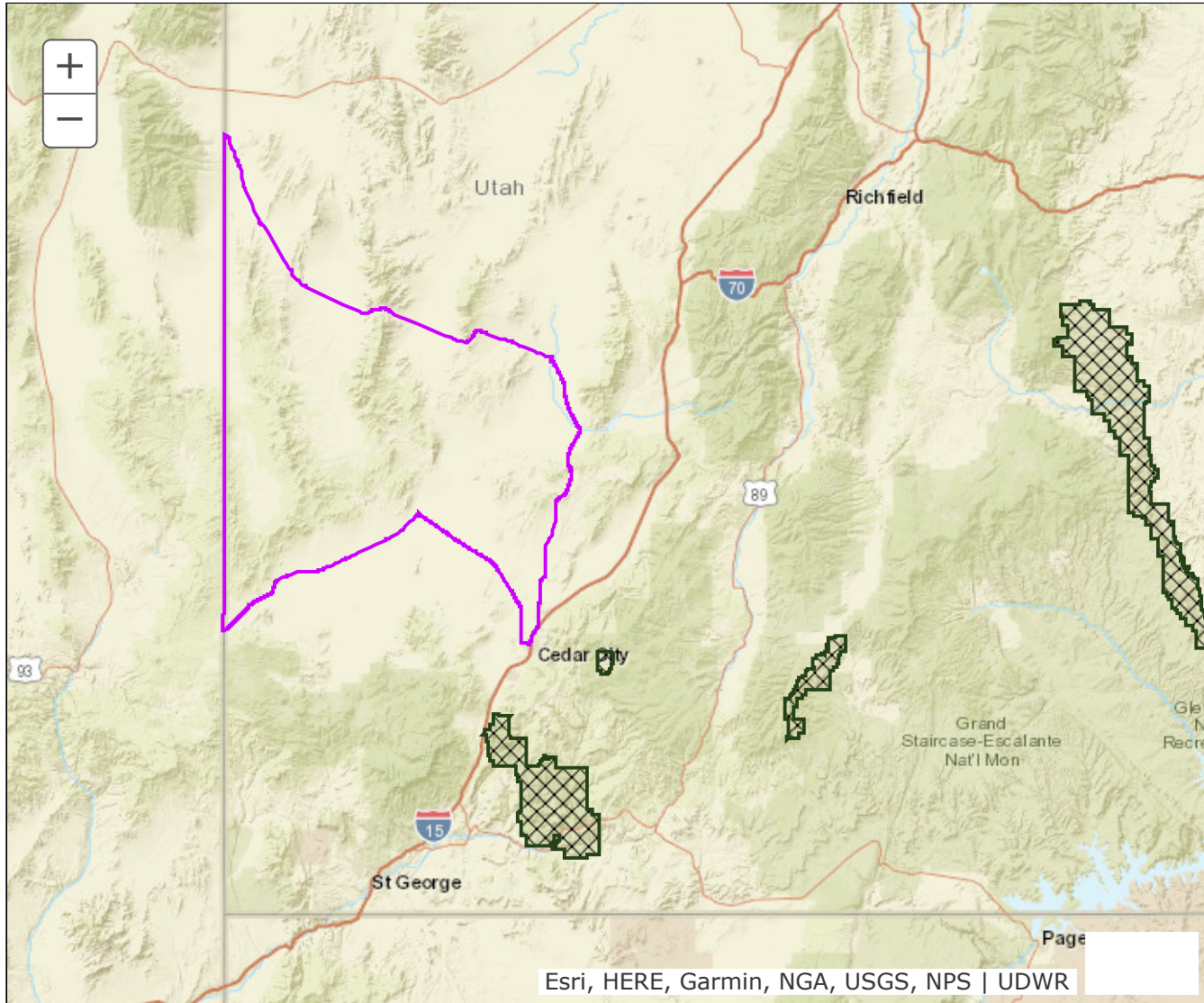


BOUNDARY RECOMMENDATION

UNIT Southwest Desert, South

SPECIES Elk



Updated Boundary: Beaver, Iron and Millard counties—Boundary begins at the Utah-Nevada state line and US-6/50; east on SR-21; south on SR-21 to SR-130; south on SR-130 to I-15; south on I-15 to SR-56; west on SR-56 to the Lund highway; northwest on this highway to Lund and the Union Pacific railroad tracks; southwest along these tracks to the Utah-Nevada state line; north on this state line to US-6/50. Excludes all CWMUs. USGS 1:100,000 Maps: Beaver, Caliente, Cedar City, Delta, Garrison, Richfield, Wah Wah Mountains