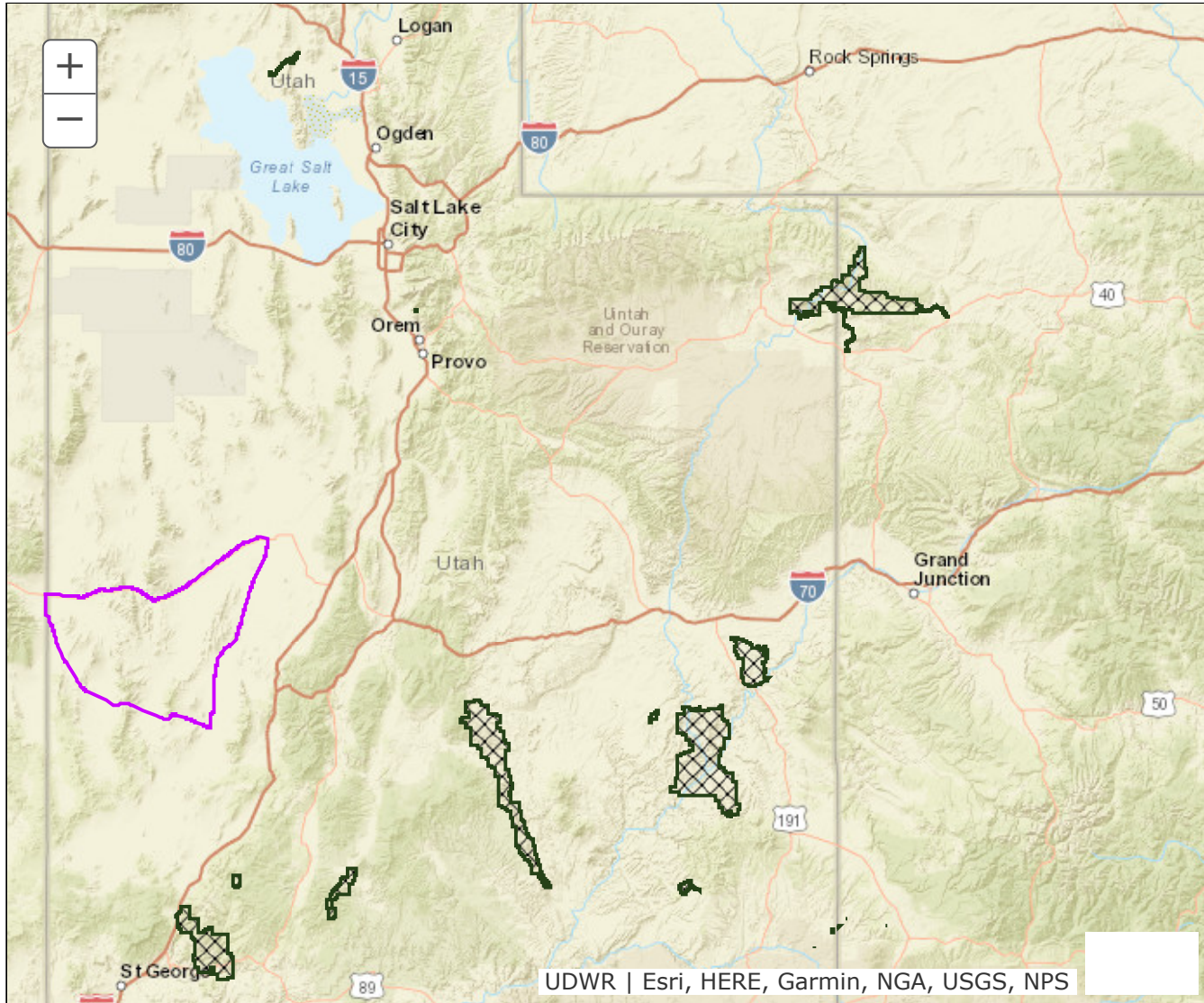


# BOUNDARY RECOMMENDATION

**UNIT** Southwest Desert, North

**SPECIES** Elk



**Updated Boundary:** Beaver, Iron and Millard counties—Boundary begins at the Utah-Nevada state line and US-6/50; east on US-6/50 to SR-257; south on SR-257 to SR-21; west on SR-21 to the Utah-Nevada state line. Excludes all CWMUs. USGS 1:100,000 Maps: Beaver, Delta, Garrison, Richfield, Tule Valley, Wah Wah Mountains North, Wah Wah Mountains South, Wilson Creek Range. Boundary questions? Call the Cedar City office, 435-865-6100.