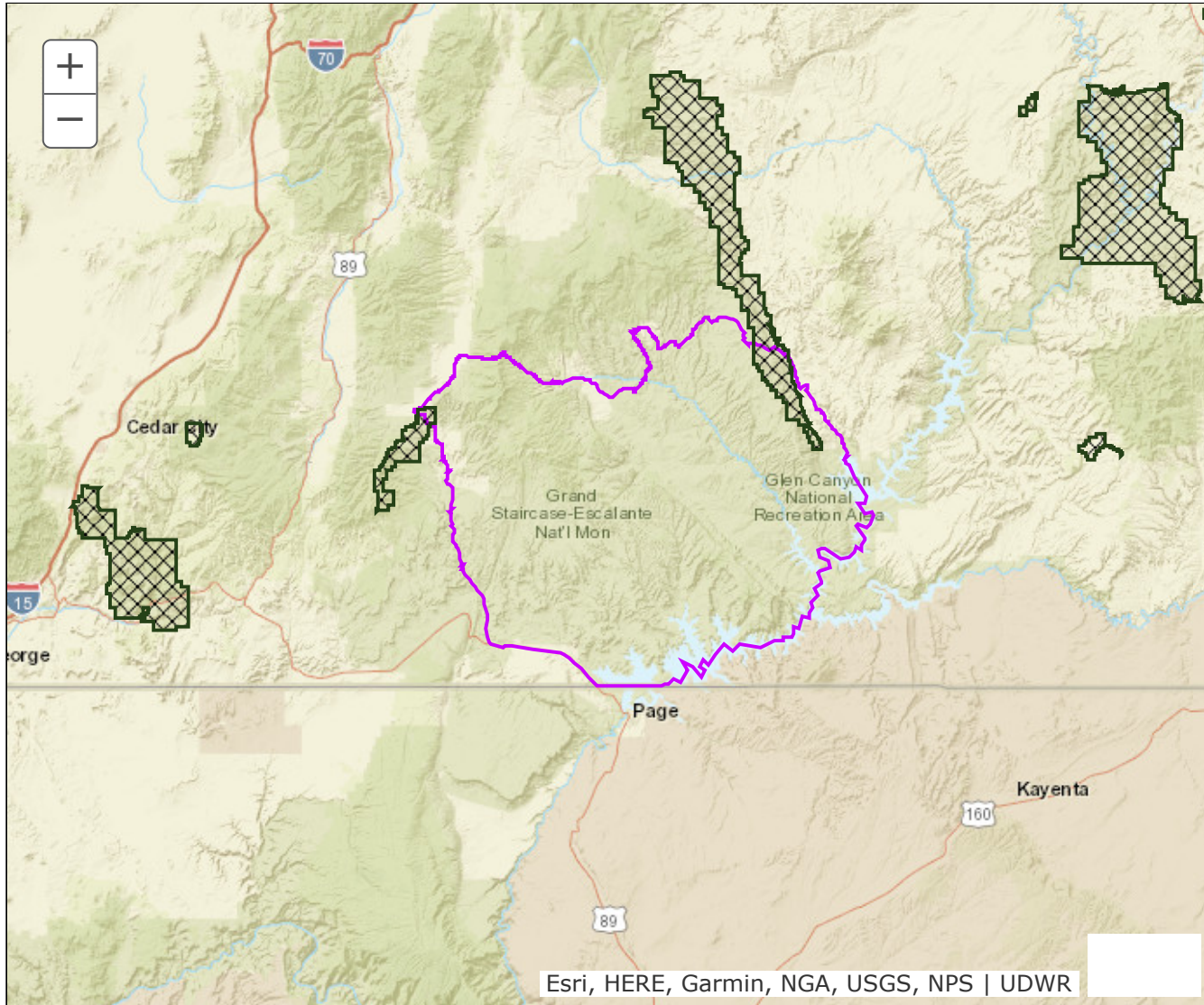


BOUNDARY RECOMMENDATION

UNIT Plateau, Barney Top/Kaiparowits

SPECIES Elk



Updated Boundary: Garfield and Kane counties--Boundary begins SR-12 and the Paria River in Cannonville; south on the Paria river to US-89; east on US-89 to the Utah/Arizona border; east on the Utah/Arizona border to Lake Powell; east and north on Lake Powell to Bullfrog creek and the Notom Road; north on the Notom Road to the Burr Trail; west on the Burr Trail to Boulder and SR-12; west on SR-12 to Main Canyon-Sweetwater Road; west on Main Canyon-Sweetwater Road to John's Valley Road; south on John's Valley Road to SR-12; east on SR-12 to Cannonville and the Paria River. USGS 1:100,000 Maps: Escalante, Navajo Mountain, Smoky Mountain. Boundary questions? Call the Cedar City office, 435-865-6100