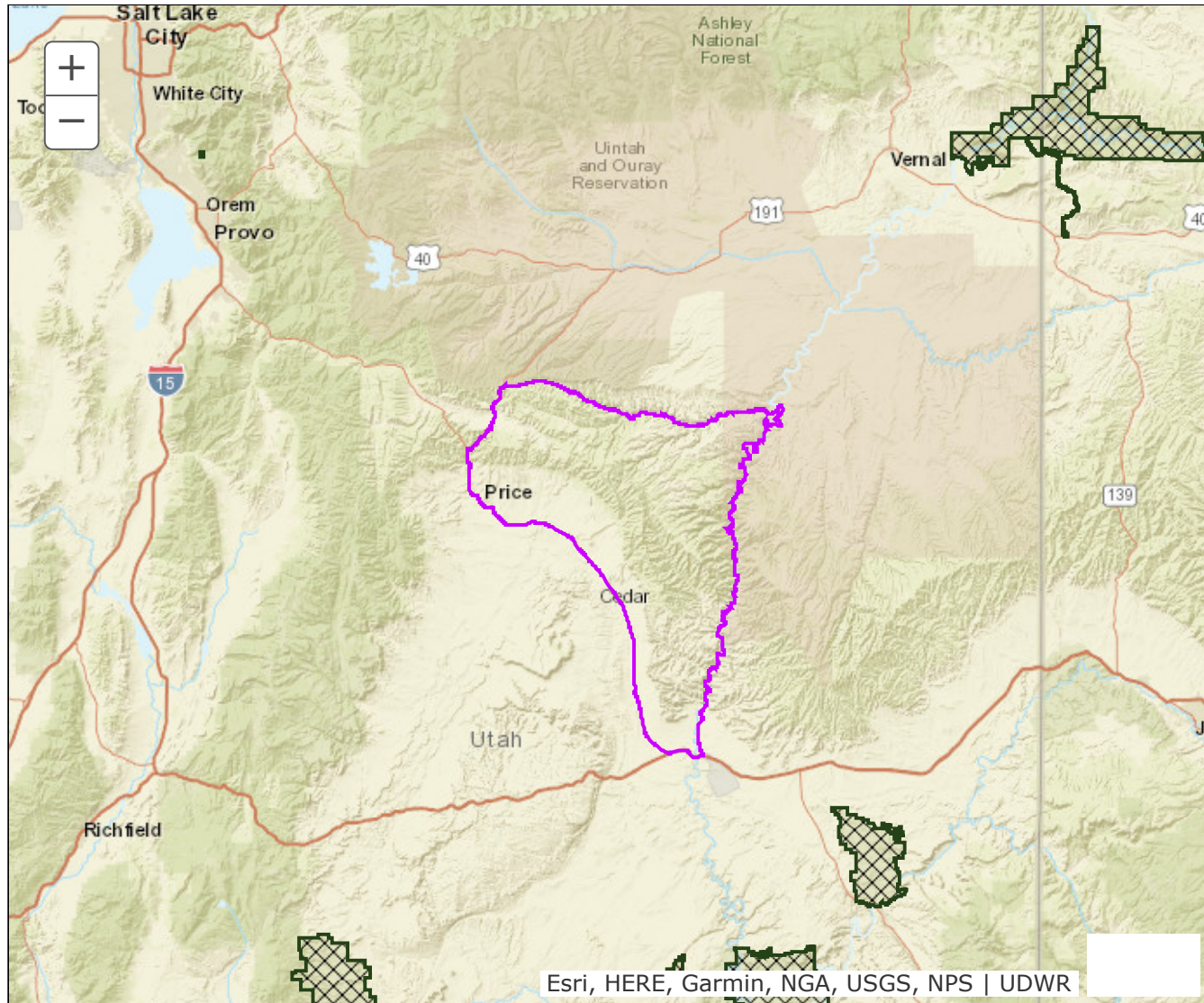


## BOUNDARY RECOMMENDATION

**UNIT** Nine Mile, Range Creek

**SPECIES** Elk



**Updated Boundary:** Carbon, Duchesne, and Emery counties Boundary begins at exit 164 on I-70 near the town of Green River west on I-70 to US-6 north and west on US-6 to US-191 north on US-191 to Argyle Canyon Road southeast on this road to Nine Mile Canyon Road east on this road to its end near Bulls Canyon and Nine Mile Creek east along this creek to the Green River south along this river to Swasey's Boat Ramp and the Hastings Road south on this road to SR-19 south and east on SR-19 to Exit 164 on I-70 near the town of Green River. This hunt is comprised of all or largely private property. Hunters should acquire written permission from the landowner before applying for this hunt. Excludes all CWMUs. USGS 1:100,000 Maps: Huntington, Price, Seep Ridge. Boundary questions? Call Price office, 435-613-3700.