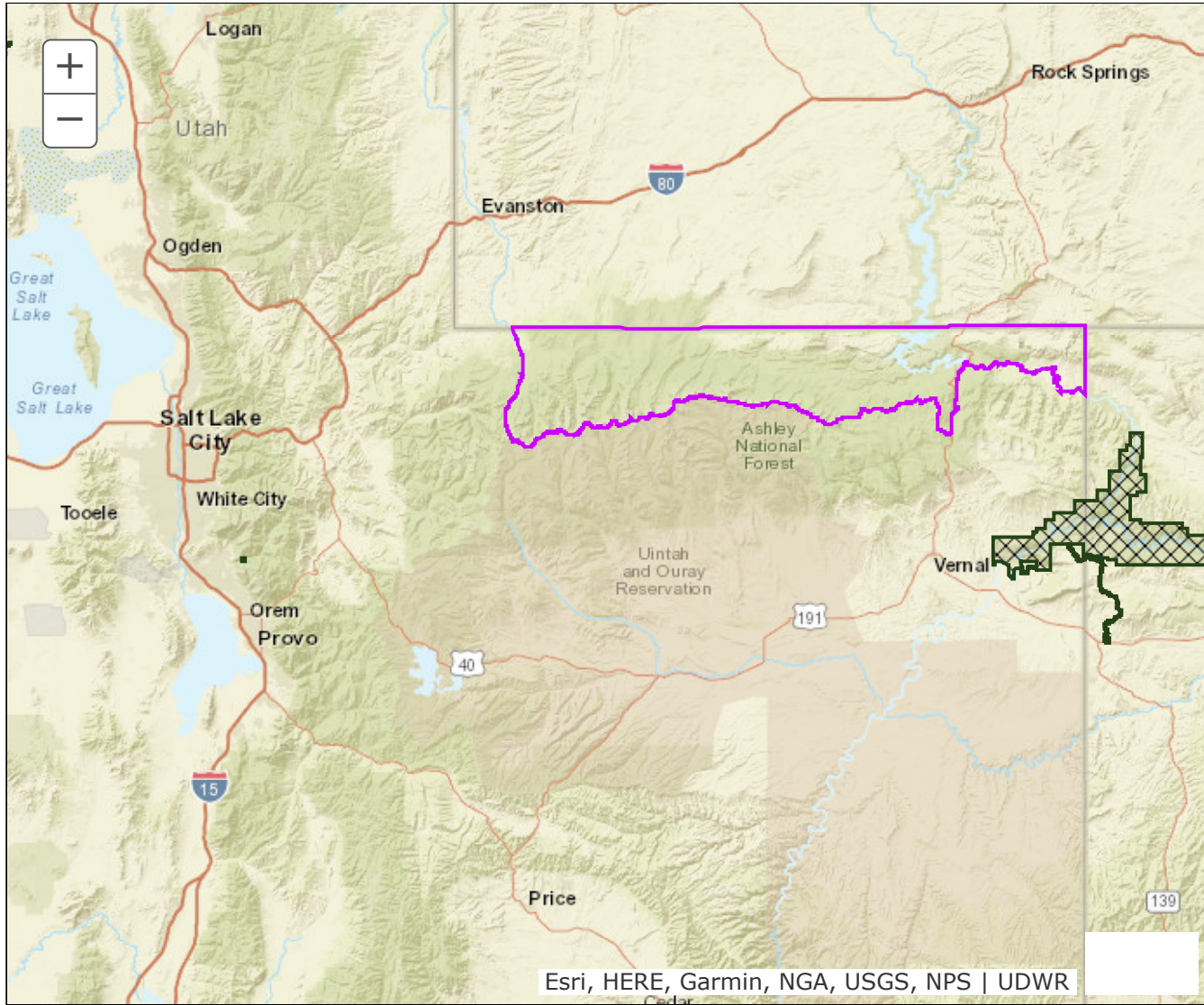


BOUNDARY RECOMMENDATION

UNIT North Slope

SPECIES Deer



Updated Boundary: Daggett and Summit counties--Boundary begins SR-150 and the Summit-Duchesne county line at Hayden Pass (summit of the Uinta Mountains); north on SR-150 to the Utah-Wyoming state line; east on this state line to the Utah-Colorado state line; south on this state line to the Green River; west along this river to Flaming Gorge Reservoir; west along the south shoreline of this reservoir to Cart Creek; south along this creek to US-191; south on US-191 to the Uintah-Daggett County line (summit of the Uinta Mountains); west along the summit of the Uinta mountains to SR-150 at Hayden Pass. USGS 1:100,000 Maps: Dutch John, Kings Peak. Boundary questions? Call the Vernal office, 435-781-9453.