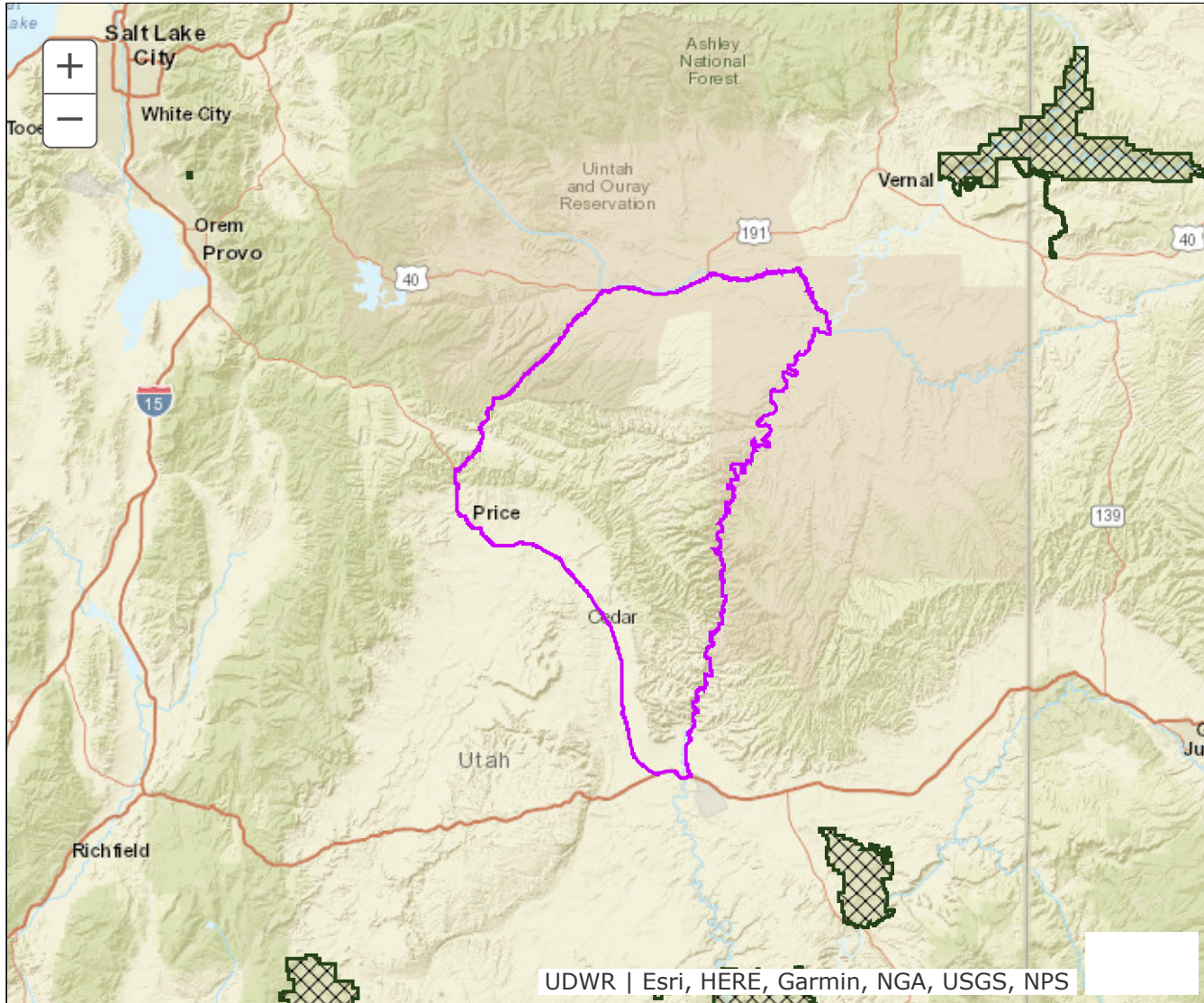


BOUNDARY RECOMMENDATION

UNIT Nine Mile

SPECIES Bison



Updated Boundary: Carbon, Duchesne, Emery and Uintah counties--Boundary begins at US-40 and US-191 in Duchesne; southwest on US-191 to US-6; southeast on US-6 to I-70; east on I-70 to Exit 164 and SR-19 near the town of Green River; north and west on SR-19 to Hastings Road; north on this road to the Swasey boat ramp and the Green River; north along this river to the Duchesne River; west along this river to US-40 at Myton; west on US-40 to US-191 in Duchesne. EXCLUDES ALL NATIVE AMERICAN TRUST LANDS WITHIN THIS BOUNDARY. Excludes all CWMUs. USGS 1:100,000 Maps: Duchesne, Huntington, Price, Seep Ridge, Vernal.; Boundary questions? Call the Vernal office, 435-781-9453 or the Price office, 435-613-3700.