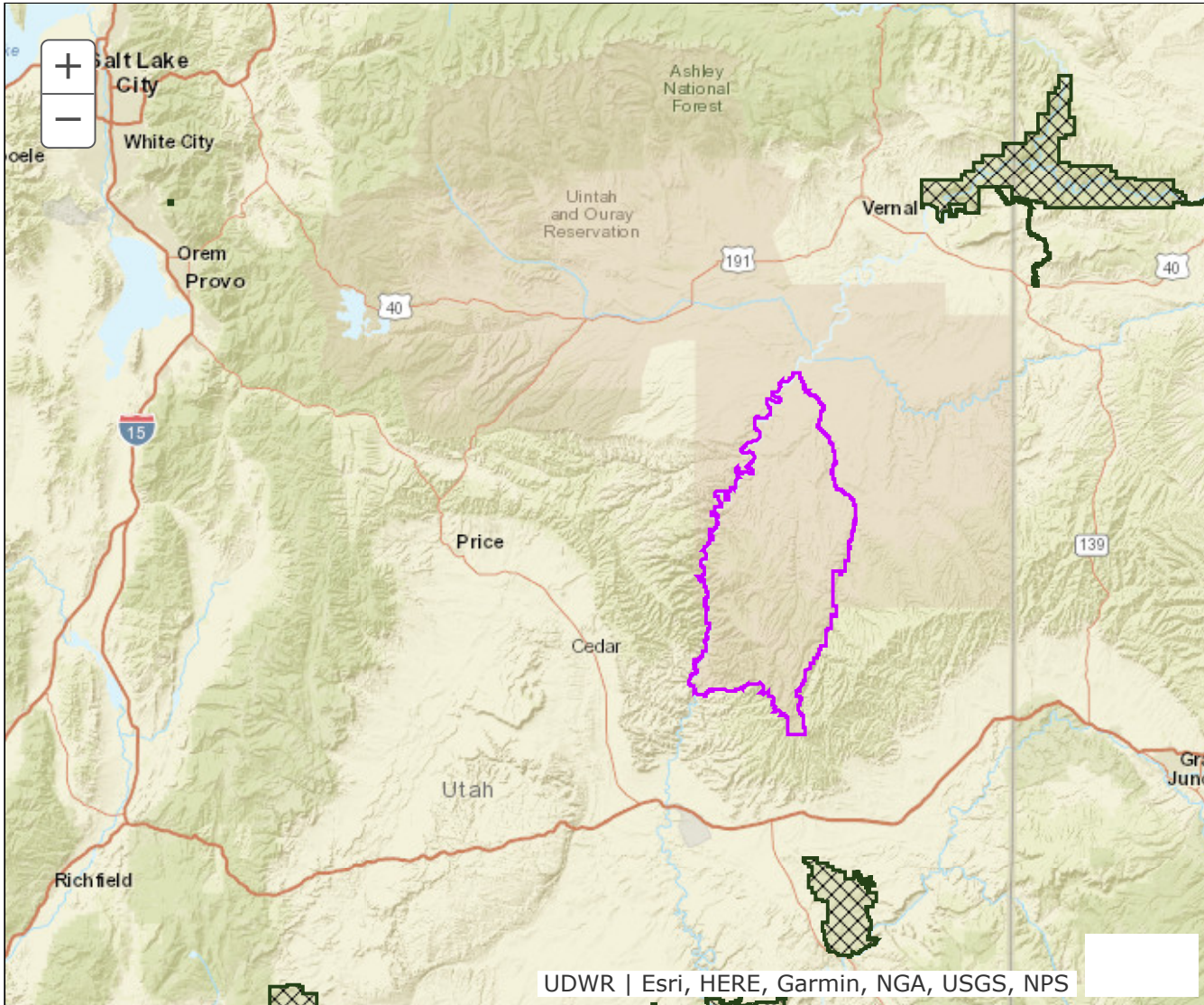


BOUNDARY RECOMMENDATION

UNIT Book Cliffs, Wild Horse Bench

SPECIES Bison



Updated Boundary: Grand and Uintah counties--Boundary begins at the confluence of Willow Creek and the Green River; south along the Green River to Coal Creek and the Ute Indian Reservation boundary; east and north on this boundary to Willow Creek (between Lower Bottom Canyon and Bull Canyon); north along this creek to the Green River. EXCLUDES ALL NATIVE AMERICAN TRUST LAND. USGS 1:100,000 Maps: Huntington, Price, Seep Ridge, Vernal, Westwater. Boundary Questions? Call the Vernal office, 435-781-9453.