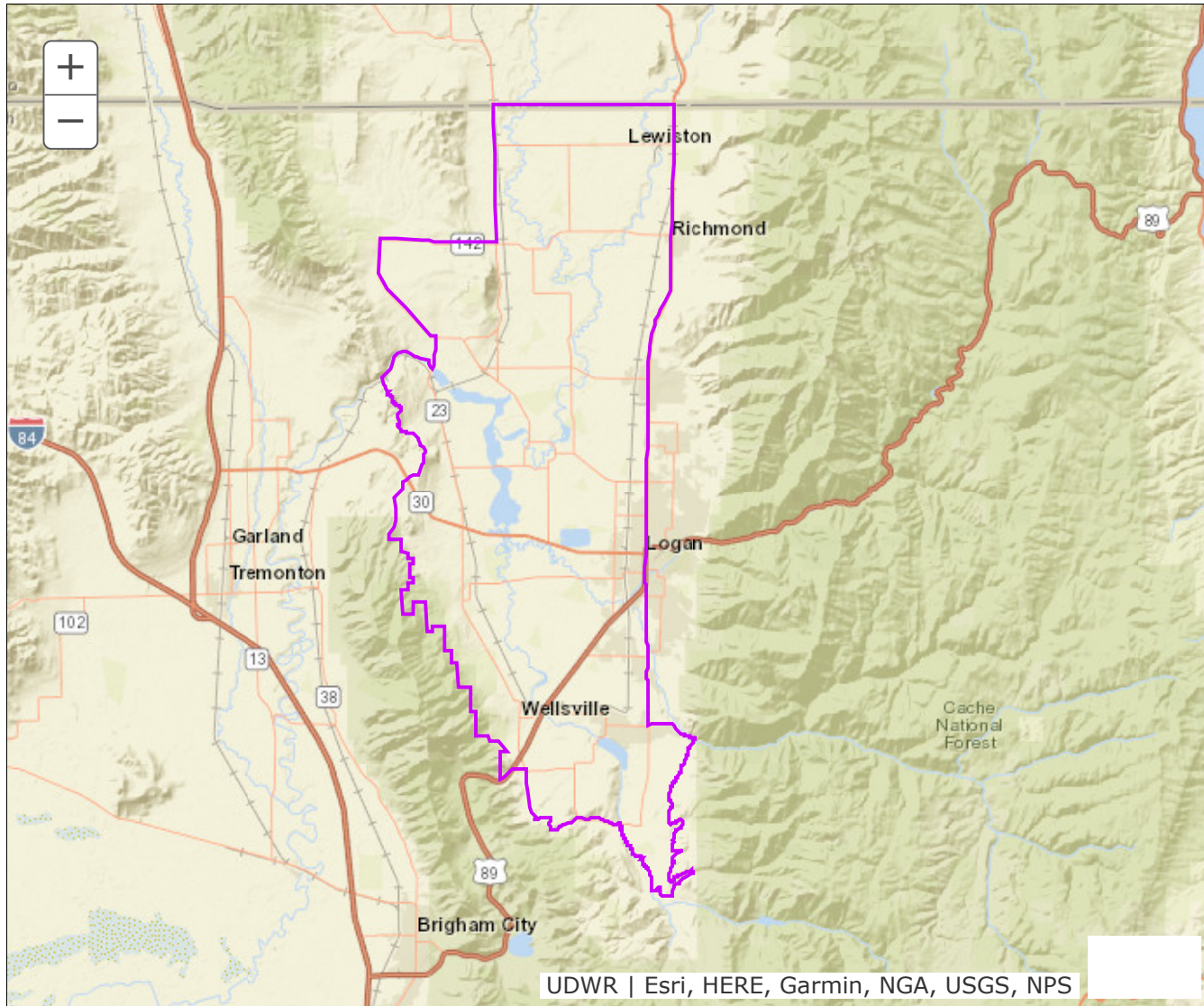


BOUNDARY RECOMMENDATION

UNIT West Cache Extended Archery Area (Elk)

SPECIES Elk



Updated Boundary: Cache County—Boundary begins at the intersection of the Idaho state line and US-89/91; south on US-89/91 to the intersection of SR-165 in Logan; south on SR-165 to SR-101; east on SR-101 to the Blacksmith Fork River crossing; southeast along the Blacksmith Fork River to the Highline Canal; south along the Highline Canal to 800 east in Avon; south and west on 800 east (10000 south Paradise Dry Canyon Road) to 10600 south; west on 10600 south to 800 east; south on 800 east to SR-165; north and west on SR-165 to West Canyon Road; west on West Canyon Road to the Little Bear River crossing; north along the Little Bear River to Mount Pisgah Road; west on Mount Pisgah Road to the J Baxter Walk in Access property line; north and west following the J Baxter Walk in Access property line to 2400 west; north on 2400 west to the G Baxter Walk in Access property line; west and south along the G Baxter Walk in Access property line to Mount Pisgah Road; south and west along Mount Pisgah Road to 8800 south; west on 8800 south to 3200 west; north along 3200 west to 8500 south; west on 8500 south to 4000 west; north on 4000 west to 6800 south; west on

6800 south to US-89/91; south on US-89/91 to where the Cache National Forest meets US 89/91; north along the Cache National Forest boundary to where the Cache National Forest boundary meet the Cache/Box Elder County line; north along the Cache/Box Elder County line to Cutler Reservoir; east along Cutler Reservoir to SR-23; north on SR-23 to the intersection of SR-142; north and east on SR-142 to the intersection of SR-23; north on SR-23 to Idaho state line; east along the Idaho state line to US-89/91. USGS 1:100,000 Maps: Logan, Tremonton. Boundary questions? Call the Ogden office, 801-476-2740. — A hunting permit does not authorize the permit holder to hunt on Native American trust lands, CWMUs (unless you specifically have a permit for that CWMU) or on National Park lands. Furthermore, it is the responsibility of hunters to learn if hunting is allowed and what specific rules and regulations may apply on National Monuments, National Wildlife Refuges, State Parks, UDWR Wildlife and Waterfowl Management areas, military installations and within the boundaries of cities, towns and municipalities. Written permission is required to hunt private lands.