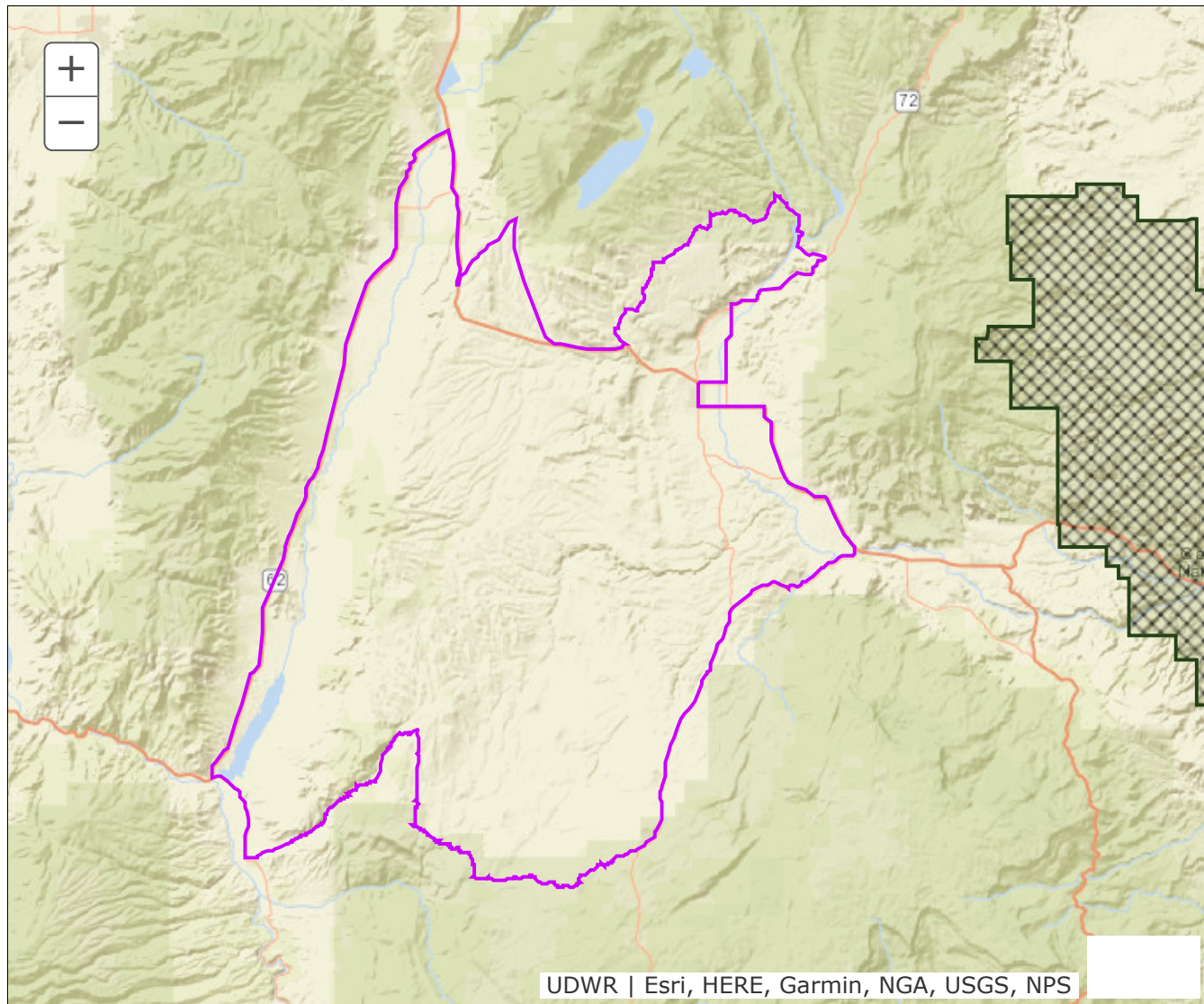


BOUNDARY RECOMMENDATION

UNIT Parker Mtn, Plains

SPECIES Pronghorn



Updated Boundary: Garfield, Piute, Sevier, and Wayne counties--- Boundary begins at the junction between SR24 and SR62 heading south to Highway 22; southeast on Highway 22 to Parker Antimony road; east on Parker Antimony road to Wildcat road; south on Wildcat road to USFS NF road 085, west on USFS NF road 085 to Pollywog Dog Lake road, west on Pollywog Dog Lake road to County Road 20; north on County Road 20 to County Road 27; east on County Road 27 to Bicknell Bottoms Circle road; west on the Bicknell Bottoms Circle road to SR-24; northwest on SR-24 to Highway 72; northeast on Highway 72 to Fremont River road; west on Fremont River road to County Road 4087; southwest on County Road 4087 to SR-24; west on SR-24 to Fishlake Road; north on Fishlake road to Highway 25; south on Highway 25 to SR-24; north on SR-24 to Highway 62. Boundary questions? Call the Cedar City office, 435-865-6100. - A hunting permit does not authorize the permit holder to hunt on Native American trust lands, CWMUs (unless you specifically have a permit for that CWMU) or on National Park lands. Furthermore, it is the responsibility of hunters to learn if hunting is allowed and what

specific rules and regulations may apply on National Monuments, National Wildlife Refuges, State Parks, UDWR Wildlife and Waterfowl Management areas, military installations and within the boundaries of cities, towns and municipalities. Written permission is required to hunt private lands.