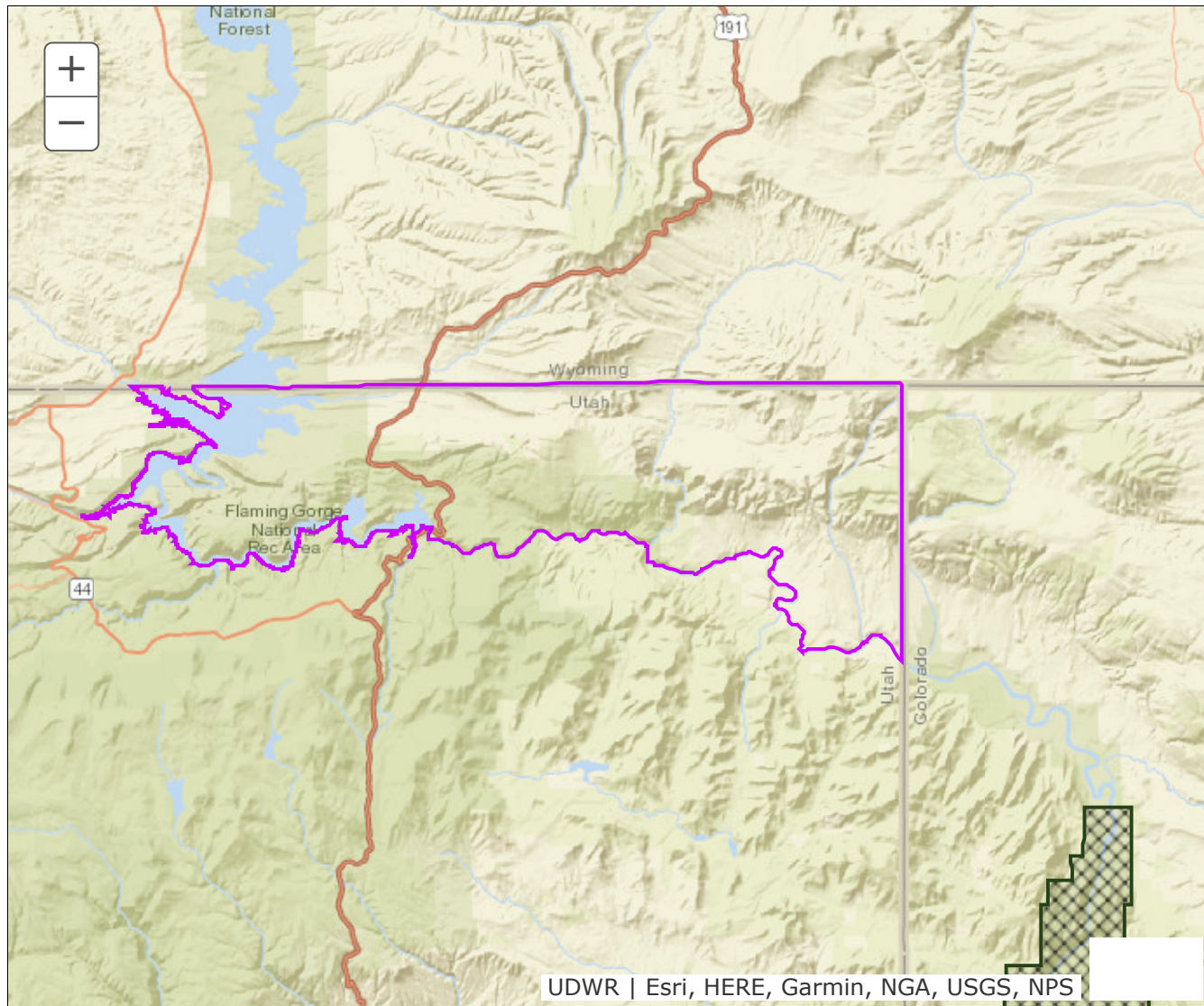


BOUNDARY RECOMMENDATION

UNIT North Slope, Three Corners

SPECIES Elk



Updated Boundary: Daggett County—Boundary begins at the Flaming Gorge Reservoir main channel western shoreline on the east side of Lucerne Point at the Utah-Wyoming state line; east on this state line to the Utah-Colorado state line; south on this state line to the Green River; west along this river to the Flaming Gorge Reservoir west shoreline; west along this shoreline to the Utah-Wyoming state line; east along the state line to Lucerne Point; east around Lucerne Point to the Utah-Wyoming State line. Excludes all CWMUs. USGS 1:100,000 Maps: Dutch John. Boundary questions? Call Vernal office, 435-781-9453. - A hunting permit does not authorize the permit holder to hunt on Native American trust lands, CWMUs (unless you specifically have a permit for that CWMU) or on National Park lands. Furthermore, it is the responsibility of hunters to learn if hunting is allowed and what specific rules and regulations may apply on National Monuments, National Wildlife Refuges, State Parks, UDWR Wildlife and Waterfowl Management areas, military installations and within the boundaries of cities, towns and municipalities. Written permission is required to hunt private lands.