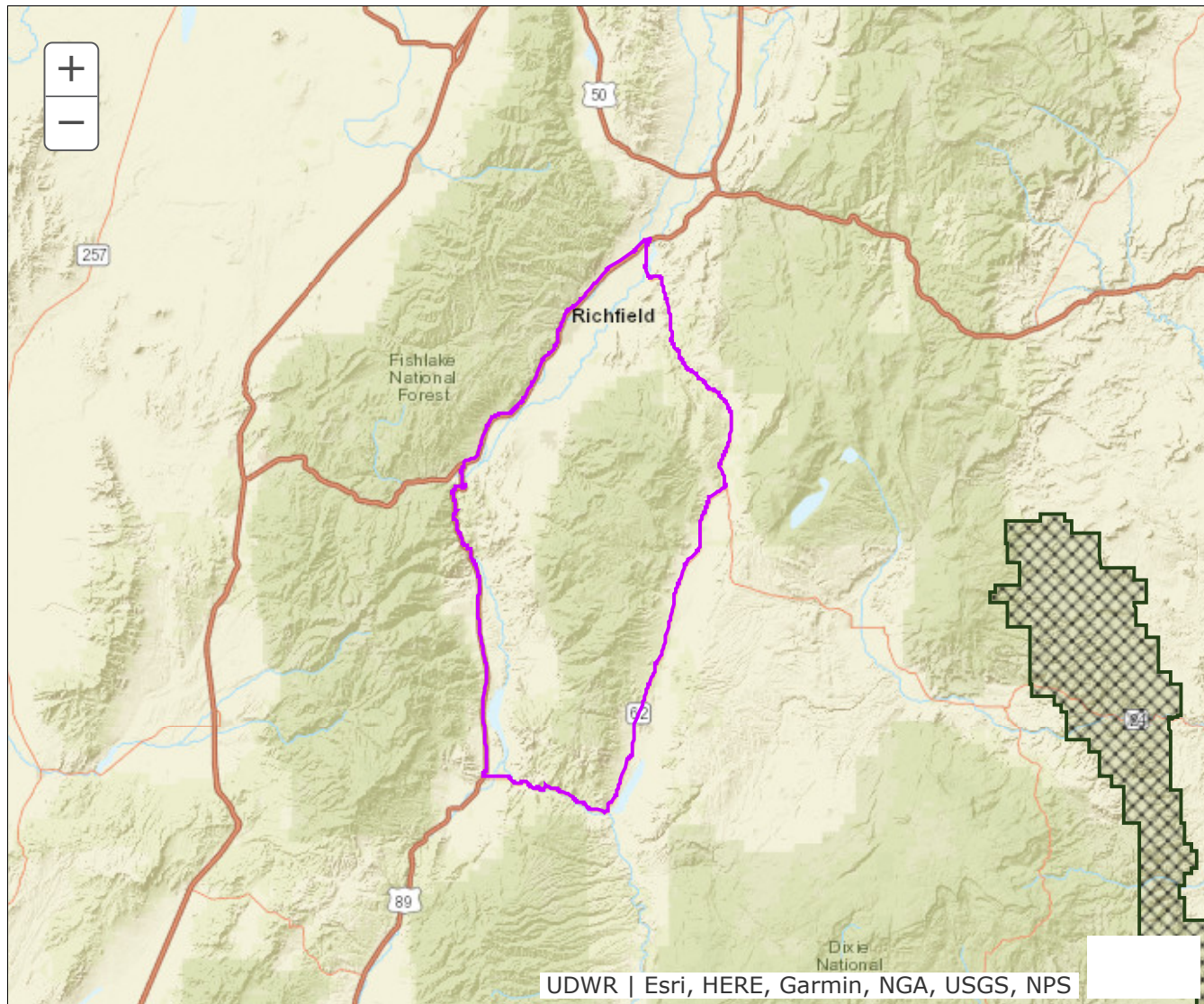


## BOUNDARY RECOMMENDATION

**UNIT** Monroe

**SPECIES** Elk



**Updated Boundary:** Piute and Sevier counties—Boundary begins at US-89 and I-70 near Sevier; south on US-89 to SR-62; east and north on SR-62 to SR-24; north on SR-24 to I-70; south on I-70 to US-89 near Sevier. EXCLUDES ALL NATIVE AMERICAN TRUST LANDS WITHIN THIS BOUNDARY. USGS 1:100,000 Maps: Beaver, Loa, Richfield, Salina. Boundary questions? Call the Cedar City office, 435-865-6100. - A hunting permit does not authorize the permit holder to hunt on Native American trust lands, CWMUs (unless you specifically have a permit for that CWMU) or on National Park lands. Furthermore, it is the responsibility of hunters to learn if hunting is allowed and what specific rules and regulations may apply on National Monuments, National Wildlife Refuges, State Parks, UDWR Wildlife and Waterfowl Management areas, military installations and within the boundaries of cities, towns and municipalities. Written permission is required to hunt private lands.