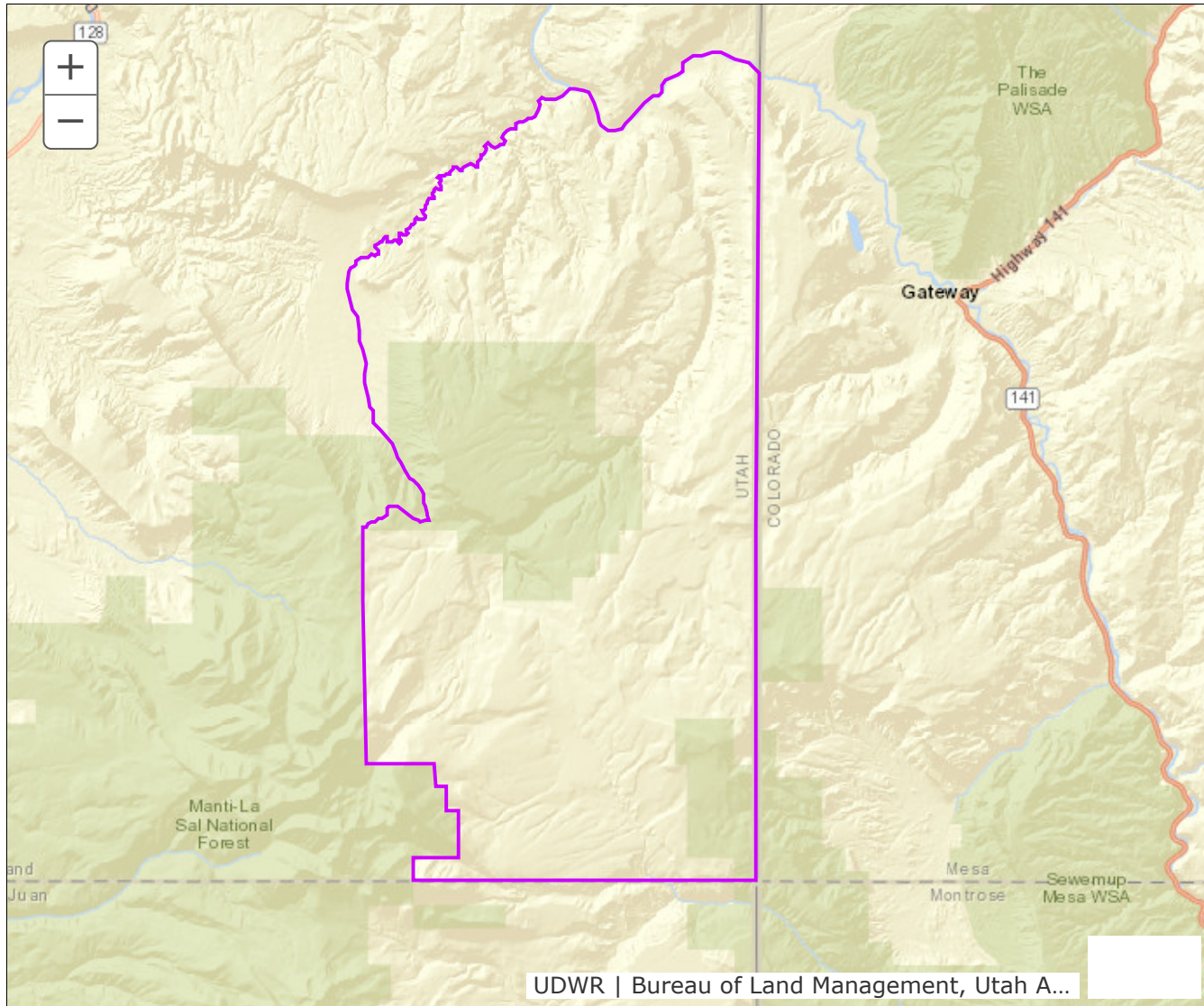


## BOUNDARY RECOMMENDATION

**UNIT** LaSal, LaSal Mtns-North

**SPECIES** Elk



**Updated Boundary:** Grand county—Boundary begins at the Utah-Colorado state line and the Grand/San Juan County line; west along this county line 7.3 miles to the USFS boundary; north then east along this boundary line to the State Line Gateway road; east on this road to Fisher Creek; north-northeast along Fisher Creek to the Dolores River; east along the Dolores River to the Utah-Colorado state line; south on the state line to the Grand/San Juan County line. Excludes all CWMUs. USGS 1:100,000 Maps: La Sal, Moab. Boundary questions? Call Price office, 435-613-3700 - A hunting permit does not authorize the permit holder to hunt on Native American trust lands, CWMUs (unless you specifically have a permit for that CWMU) or on National Park lands. Furthermore, it is the responsibility of hunters to learn if hunting is allowed and what specific rules and regulations may apply on National Monuments, National Wildlife Refuges, State Parks, UDWR Wildlife and Waterfowl Management areas, military installations and within the boundaries of cities, towns and municipalities. Written permission is required to hunt private lands.