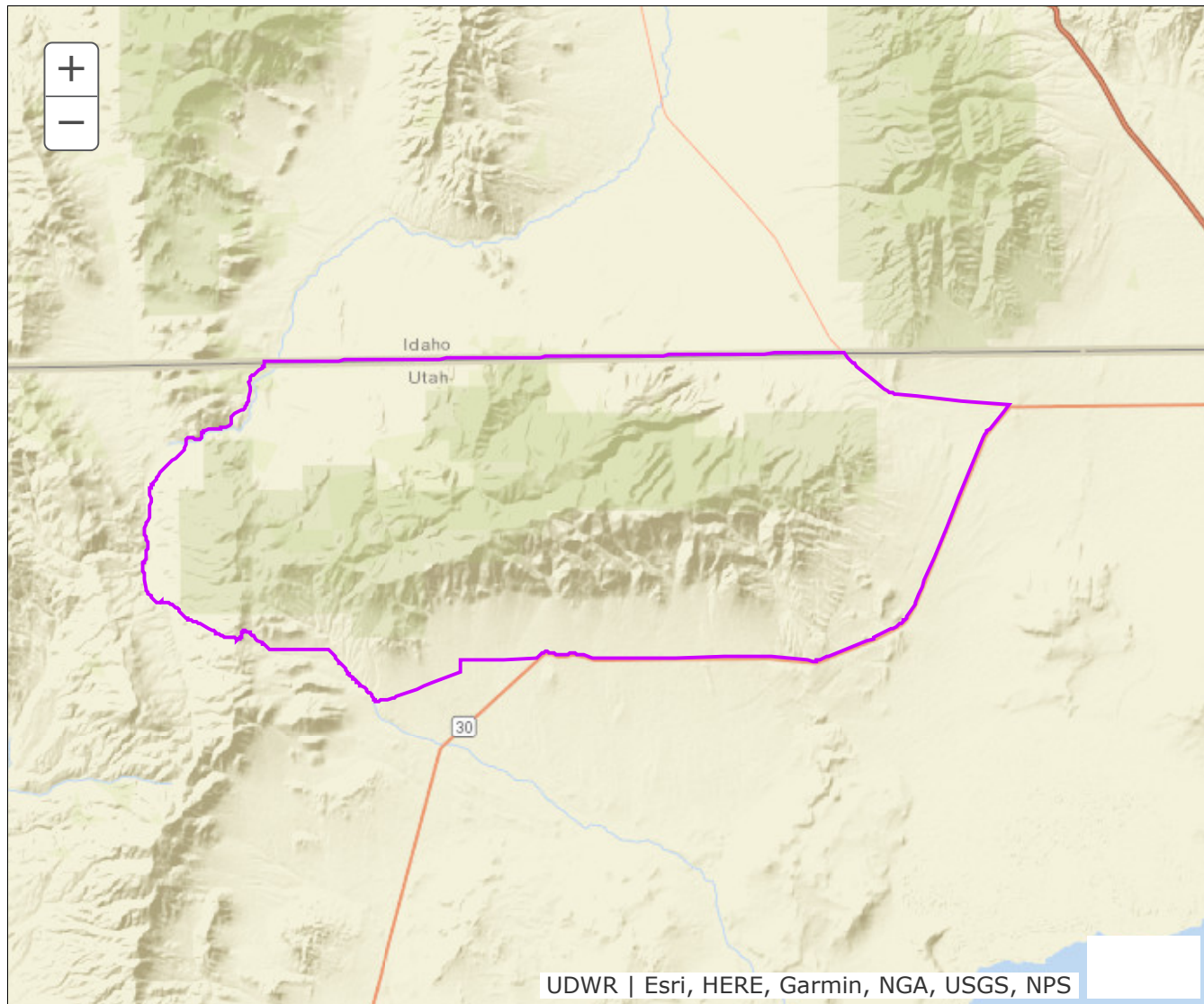


## BOUNDARY RECOMMENDATION

**UNIT** Box Elder, Sawtooth

**SPECIES** Elk



**Updated Boundary:** Box Elder County — Boundary begins at the Lynn/Almo, Idaho road and the Utah-Idaho state line; southwest on this road through the Raft River Narrows to Lynn and the Lynn Valley road; south on this road to the Dove Creek road; southeast on this road over Dove Creek Pass to SR-30 near Rosette; northeast on SR-30 to SR-42; northwest on SR-42 to the Utah-Idaho state line; west on the state line to the Lynn/Almo, Idaho road. USGS 1:100,000 Maps: Grouse Creek. Boundary questions? Call Ogden office, (801) 476-2740. - A hunting permit does not authorize the permit holder to hunt on Native American trust lands, CWMUs (unless you specifically have a permit for that CWMU) or on National Park lands. Furthermore, it is the responsibility of hunters to learn if hunting is allowed and what specific rules and regulations may apply on National Monuments, National Wildlife Refuges, State Parks, UDWR Wildlife and Waterfowl Management areas, military installations and within the boundaries of cities, towns and municipalities. Written permission is required to hunt private lands.