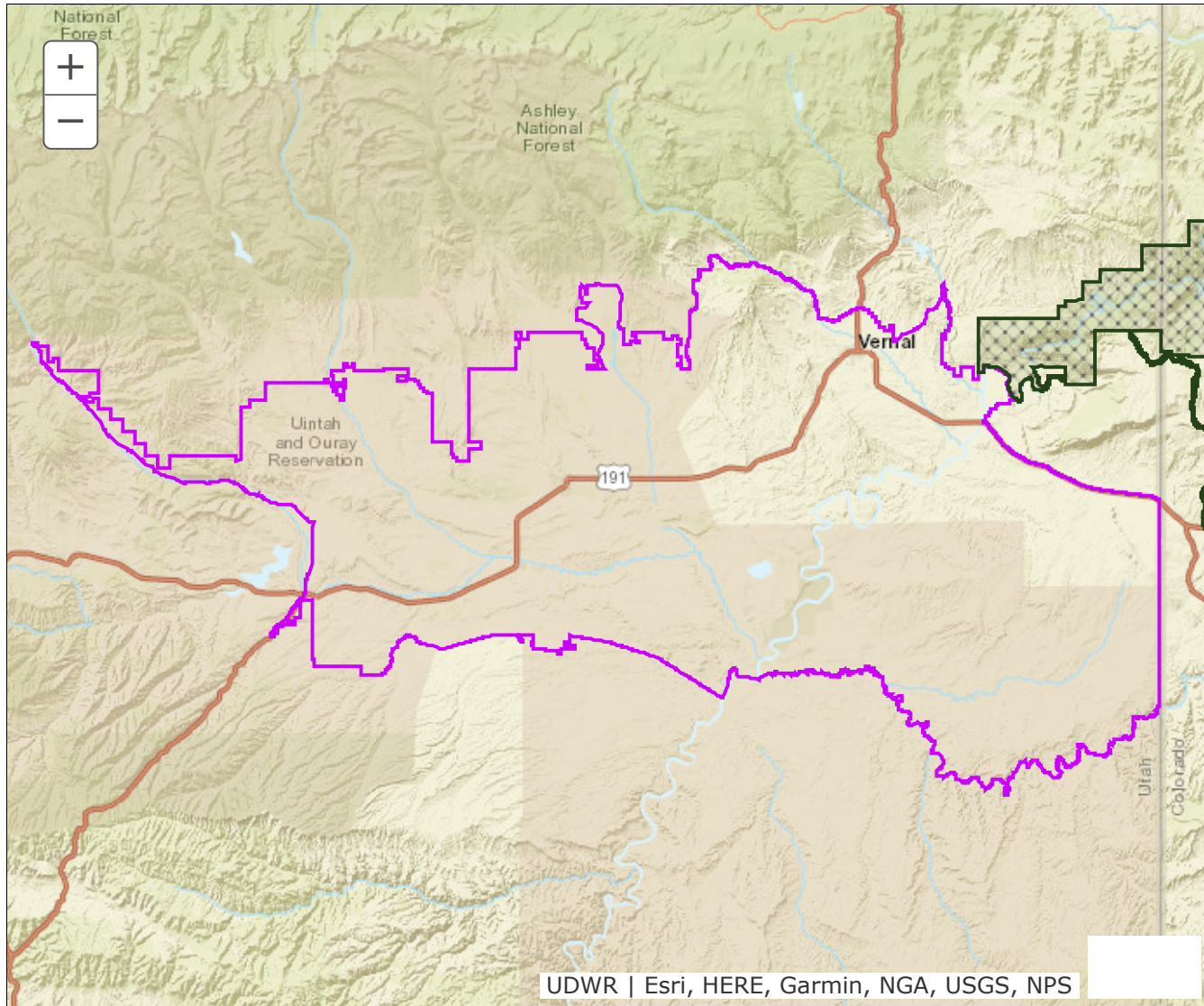


BOUNDARY RECOMMENDATION

UNIT Uinta Basin Private Lands Any Bull Elk

SPECIES Elk



Updated Boundary: Duchesne and Uintah counties—Private Lands Only within the following boundary—Boundary begins at SR-87 and US-40 in Duchesne; north along SR-87 to SR 35; west along this road to the North Fork of the Duchesne Road; north on this road to the southern boundary of the Ute Tribal property; then east along this southern boundary to SR-121 (1 mile east of Hayden); east on this road to the Whiterocks Highway/Farm Creek road; north on this road to the Ute Tribal boundary 0.5 miles south of 15000 North; west and north along this boundary back to 2500 East; north of this road to 1600 North; east on this road to the Whiterocks Canyon road; south on this road to 11000 North; east on this road to the Tridell Highway; east on this road to the Ute Tribal boundary northwest of Tridel; east along this boundary to the Deep Creek Road (county road 2040) north of Lapoint; north and east along this road to the Dry Fork Road (county road 2050); south along this road to the Mckonkie Ranch road; east on this road to Dry Fork Creek; south on this creek to Ashley Creek; south along this creek to the Steinaker Feeder Canal; east along this canal to 2500

West Street; south on this road to 2500 North street; east along this street to 1500 West street; north on this street to 3300 North street; northeast on this street to SR-191; north on this road to the BLM boundary; southeast along this boundary to the Diamond Mountain road; northeast on this road to Brush Creek; south along this creek to the Island Park road; east along this road to the BLM boundary; south and east along this boundary to the Dinosaur National Monument boundary; east along this boundary to the Green River; east and south along this river approx. 5 mi to the BLM boundary; south along this boundary to US-40; east on this road to the Utah/Colorado state line; south along this line to the White River; west along this river to the Green River; west along this river to the BLM boundary near Pariette Draw; west along the BLM boundary to the Pleasant Valley/Antelope Canyon road (CR-31) west along this road to the Antelope Canyon road (CR-27) south along this road to the Ute Tribal boundary; west along this boundary to the Cottonwood Ridge WMA boundary; west and north along this boundary to the Ute Tribal boundary; north and west along this boundary to Indian Canyon (US-191) north along US-191 to US-40; east on US-40 to SR-87 in Duchesne. EXCLUDES ALL NATIVE AMERICAN TRUST LAND, TRIBAL PROPERTY, STATE PARK LANDS, SCHOOL TRUST LANDS, UDWR WILDLIFE MAMAGEMENT AREAS, BLM LANDS, AND ANY OTHER PUBLIC LANDS. USGS 1:100,000 Maps: Duchesne, Dutch John, Vernal, Seep Ridge. Boundary Questions? Call the Vernal office, 435-781-9453. - A hunting permit does not authorize the permit holder to hunt on Native American trust lands or CWMUs. Furthermore, it is the responsibility of hunters to learn if hunting is allowed and what specific rules and regulations may apply within the boundaries of cities, towns and municipalities. Written permission is required to hunt private lands.