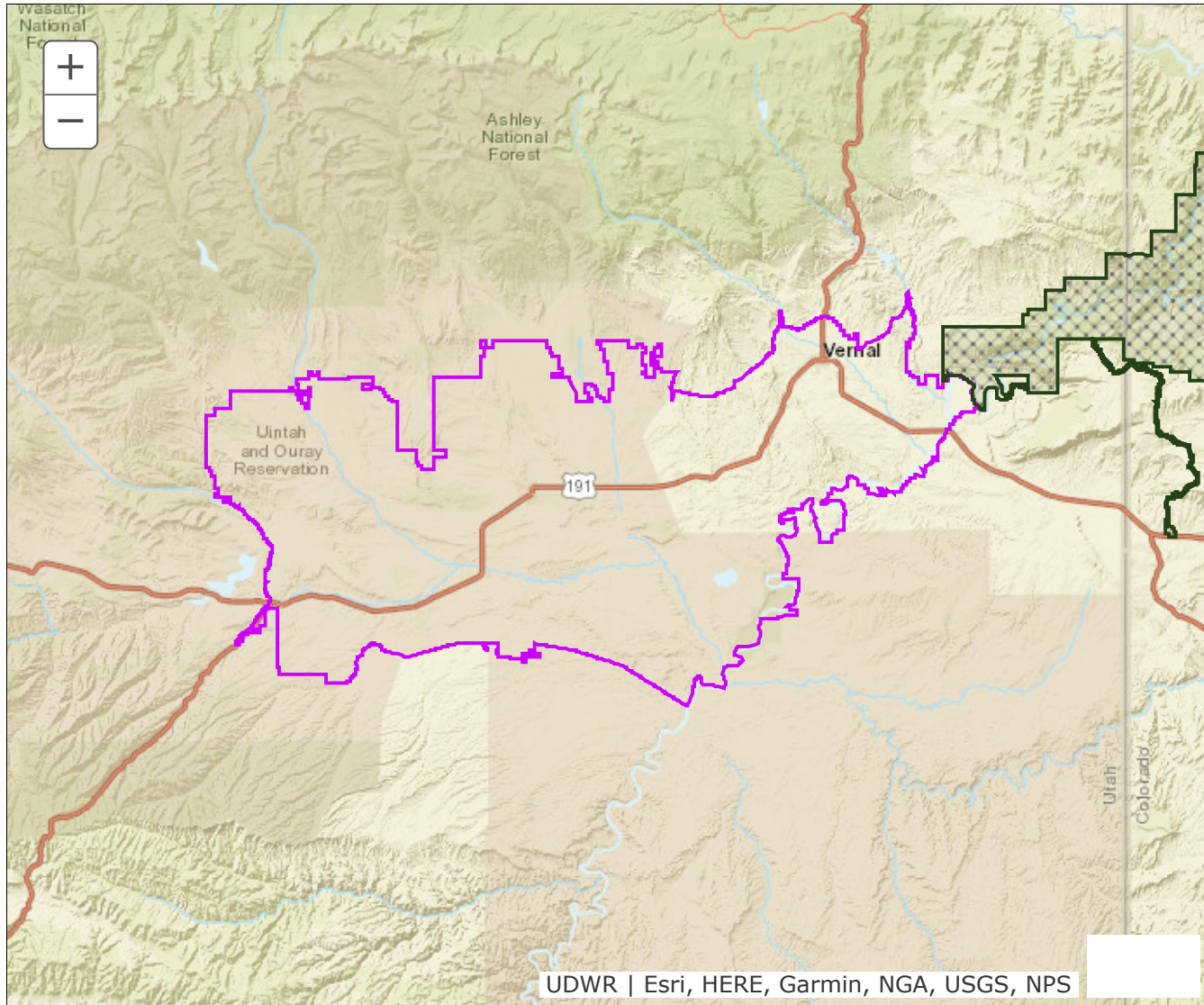


## BOUNDARY RECOMMENDATION

**UNIT** Uintah Basin Extended Archery Area

**SPECIES** Deer and Elk



**Updated Boundary:** Duchesne and Uintah counties—Boundary begins at SR-87 and the Duchesne River in Duchesne; north along this river to the Ute Tribal boundary near the mouth of Rock Creek west of Utahn; north then east on this boundary to SR-121 (1 mile east of Hayden); east and south on this road to the Ute Tribal boundary (0.9 miles west of the East Channel of the Whiterocks River); north then east along this boundary around the East Channel of the Whiterocks River, Tridel and Deep Creek to the BLM boundary northeast of Lapoint; south along this boundary to the SITLA boundary; south along this boundary to SR-121; north and east on SR-121 to the Highline Canal in Maeser; north along this canal to Ashley Creek; south along this creek to the Steinaker Feeder Canal; east along this canal to 2500 West Street; south on this road to 2500 North street; east along this street to 1500 West street; north on this street to 3300 North street; northeast on this street to SR-191; north on this road to the BLM boundary; southeast along this boundary to the Diamond Mountain Road; northeast on this road to Brush Creek; south along this creek to the Island Park road; east

along this road to the BLM boundary; south and east along this boundary to the Dinosaur National Monument boundary; east along this boundary to the Green River; east and south along this river approx. 5 mi to the BLM boundary; south along this boundary to the Ouray National Wildlife Refuge eastern boundary; south along this boundary to the Green River; west along this river to the BLM boundary near Pariette Draw west along the BLM boundary to the Pleasant Valley/Antelope Canyon road (CR-31) west along this road to the Antelope Canyon road (CR-27) south along this road to the Ute Tribal boundary; west along this boundary to the Cottonwood Ridge WMA boundary; west and north along this boundary to the Ute Tribal boundary; north and west along this boundary to Indian Canyon (US-191) north along US-191 to US-40; east on US-40 to SR-87 in Duchesne; north on SR-87 to the Duchesne River. EXCLUDES ALL NATIVE AMERICAN TRUST LAND. Contact Ouray National Wildlife Refuge for special hunting regulations on the refuge. USGS 1:100,000 Maps: Duchesne, Dutch John, Vernal. Boundary Questions? Call the Vernal office, 435-781-9453. - A hunting permit does not authorize the permit holder to hunt on Native American trust lands, CWMUs (unless you specifically have a permit for that CWMU) or on National Park lands. Furthermore, it is the responsibility of hunters to learn if hunting is allowed and what specific rules and regulations may apply on National Monuments, National Wildlife Refuges, State Parks, UDWR Wildlife and Waterfowl Management areas, military installations and within the boundaries of cities, towns and municipalities. Written permission is required to hunt private lands.