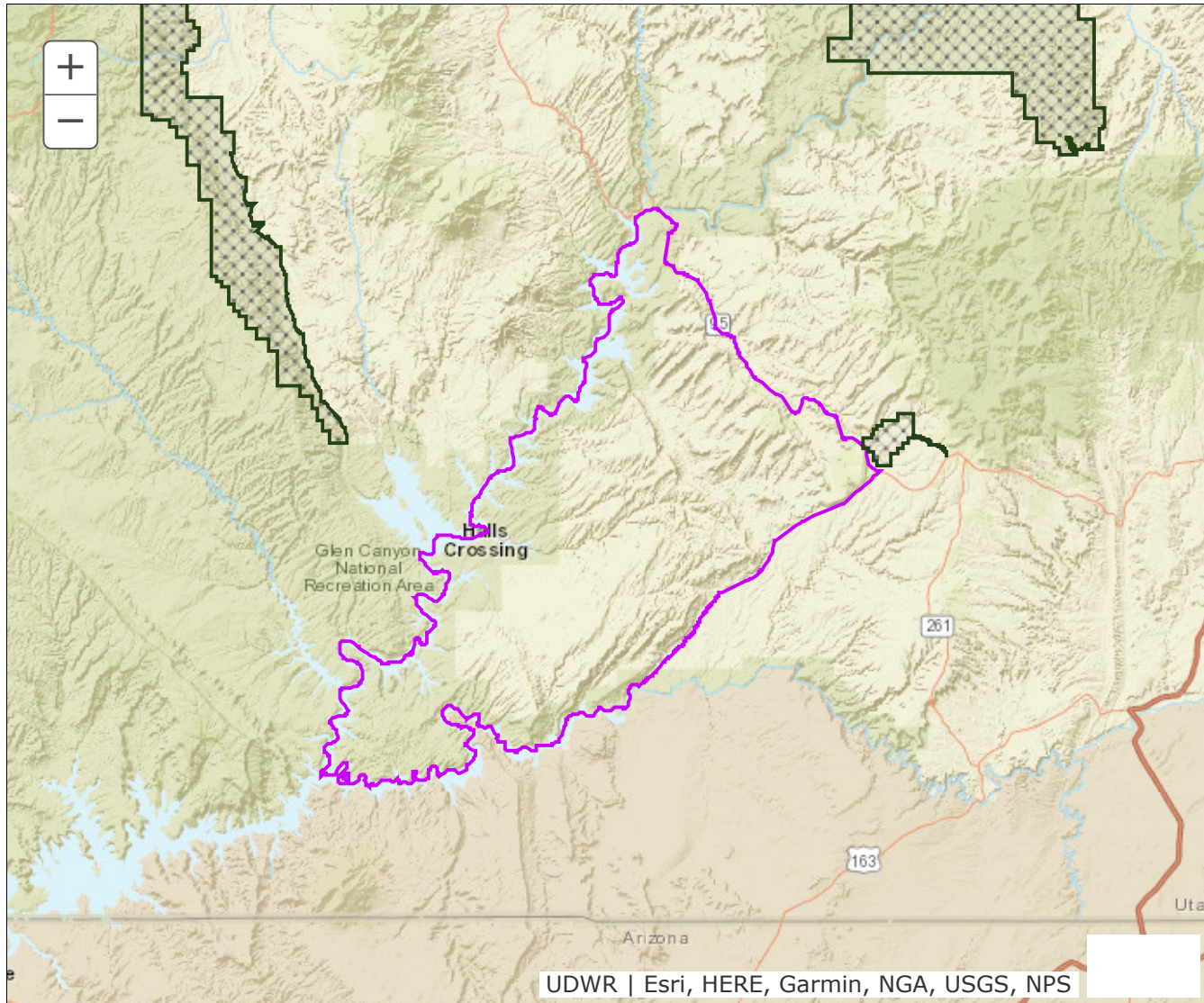


BOUNDARY RECOMMENDATION

UNIT San Juan, Mancos Mesa

SPECIES Deer



Updated Boundary: San Juan County — Northern boundary starts where Hwy 95 crosses Lake Powell at Hite. SE on Hwy 95 to junction with Hwy 276. SW on 276 to junction with Clay Hills Rd. SW on Clay Hills Rd to the San Juan River. W on San Juan River to confluence with Lake Powell. NE on Lake Powell back to where 95 crosses at Hite. USGS 1:100,000 Maps: Hite Crossing, Navajo Mountain. Boundary questions? Call Price office, 435-613-3700. - A hunting permit does not authorize the permit holder to hunt on Native American trust lands, CWMUs (unless you specifically have a permit for that CWMU) or on National Park lands. Furthermore, it is the responsibility of hunters to learn if hunting is allowed and what specific rules and regulations may apply on National Monuments, National Wildlife Refuges, State Parks, UDWR Wildlife and Waterfowl Management areas, military installations and within the boundaries of cities, towns and municipalities. Written permission is required to hunt private lands.