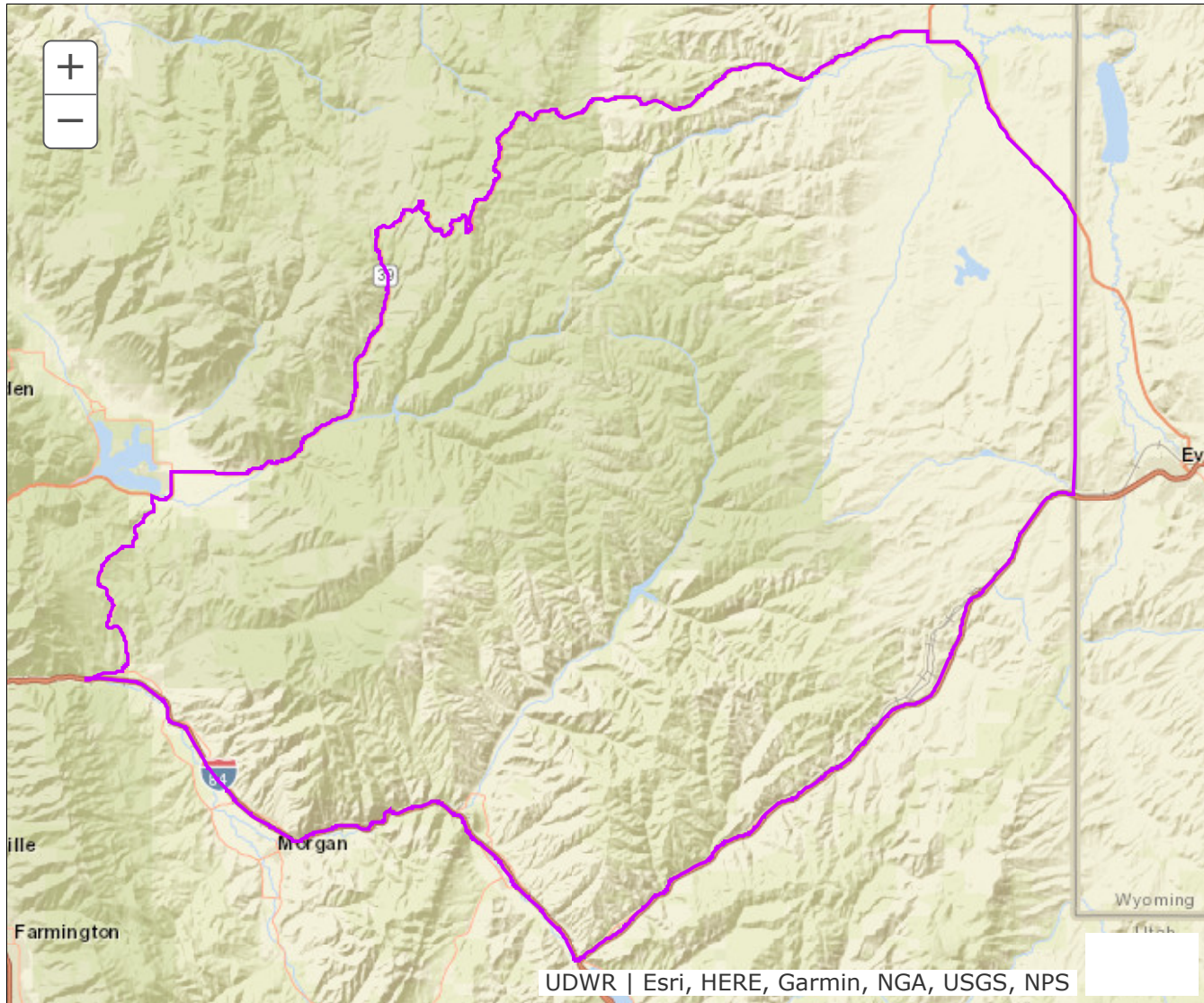


BOUNDARY RECOMMENDATION

UNIT Morgan-South Rich

SPECIES Elk



Updated Boundary: Morgan, Rich, Summit and Weber counties—Boundary begins at I-80 and the Utah-Wyoming state line; west on I-80 to Echo Junction and I-84; west on I-84 to SR-167 at Mountain Green (Trappers Loop Road); north along SR-167 to SR-39; east along SR-39 to Woodruff and SR-16; southeast on SR-16 to the Utah-Wyoming state line; south along the state line to I-80. Excludes all CWMUs. This hunt is comprised of all or largely private property. Hunters should acquire written permission from the landowner before applying for this hunt. USGS 1:100,000 Maps: Logan, Ogden. Boundary questions? Call the Ogden office, 801-476-2740. - A hunting permit does not authorize the permit holder to hunt on Native American trust lands, CWMUs (unless you specifically have a permit for that CWMU) or on National Park lands. Furthermore, it is the responsibility of hunters to learn if hunting is allowed and what specific rules and regulations may apply on National Monuments, National Wildlife Refuges, State Parks, UDWR Wildlife and Waterfowl Management areas, military installations and within

the boundaries of cities, towns and municipalities. Written permission is required to hunt private lands.