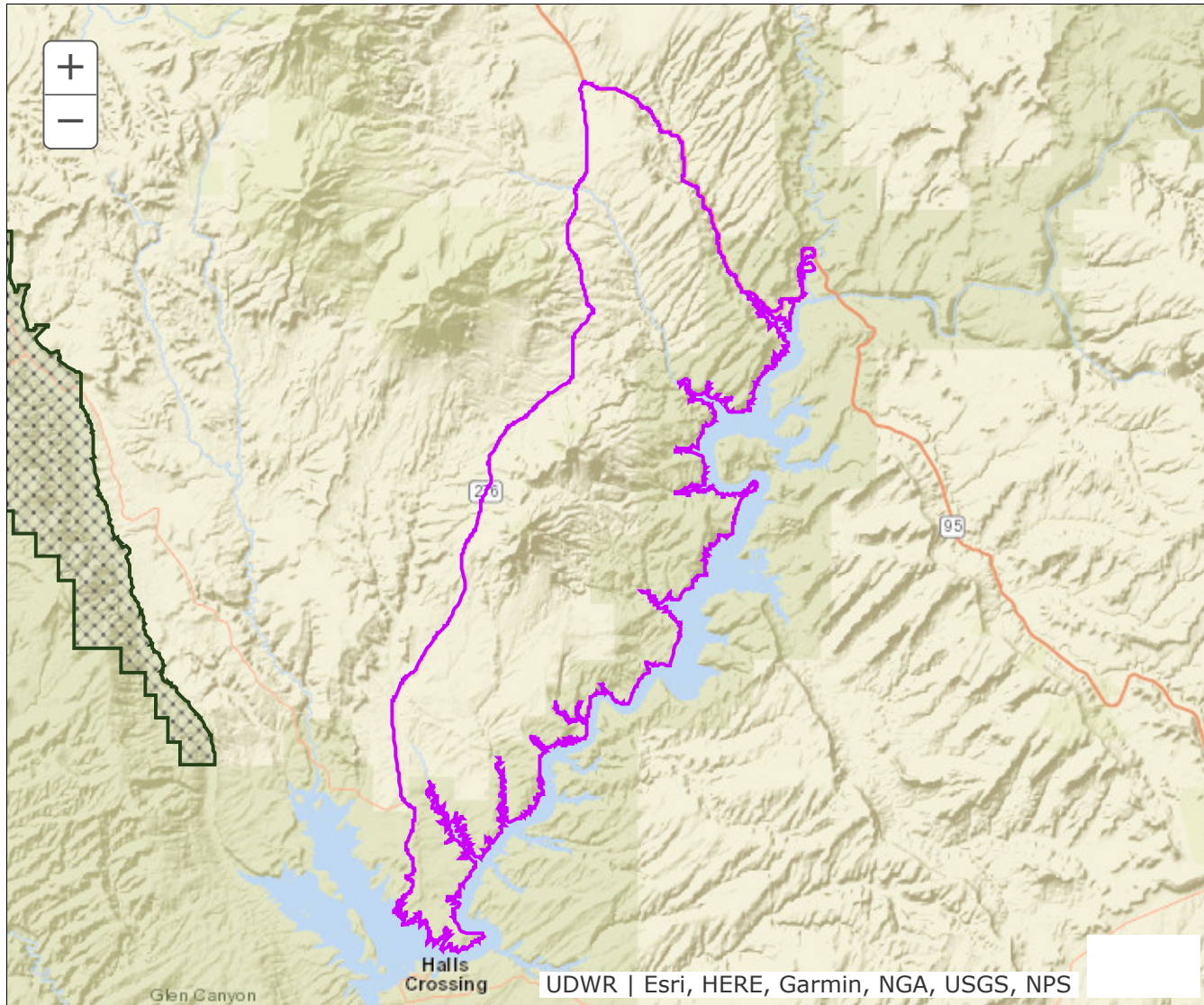


## BOUNDARY RECOMMENDATION

**UNIT** Little Rockies

**SPECIES** Deer



**Updated Boundary:** Garfield and Kane counties—Boundary begins at the SR-95 and SR-276 Junction; southeast on SR-95 to Lake Powell; south along the west shore of Lake Powell to SR-276 at Bullfrog; north on SR-276 to the SR-95 and SR-276 Junction. EXCLUDES ALL NATIONAL PARKS. USGS 1:100,000 Maps: Hanksville and Hite Crossing. Boundary questions? Call the Price office, 435-613-3700. - A hunting permit does not authorize the permit holder to hunt on Native American trust lands, CWMUs (unless you specifically have a permit for that CWMU) or on National Park lands. Furthermore, it is the responsibility of hunters to learn if hunting is allowed and what specific rules and regulations may apply on National Monuments, National Wildlife Refuges, State Parks, UDWR Wildlife and Waterfowl Management areas, military installations and within the boundaries of cities, towns and municipalities. Written permission is required to hunt private lands.