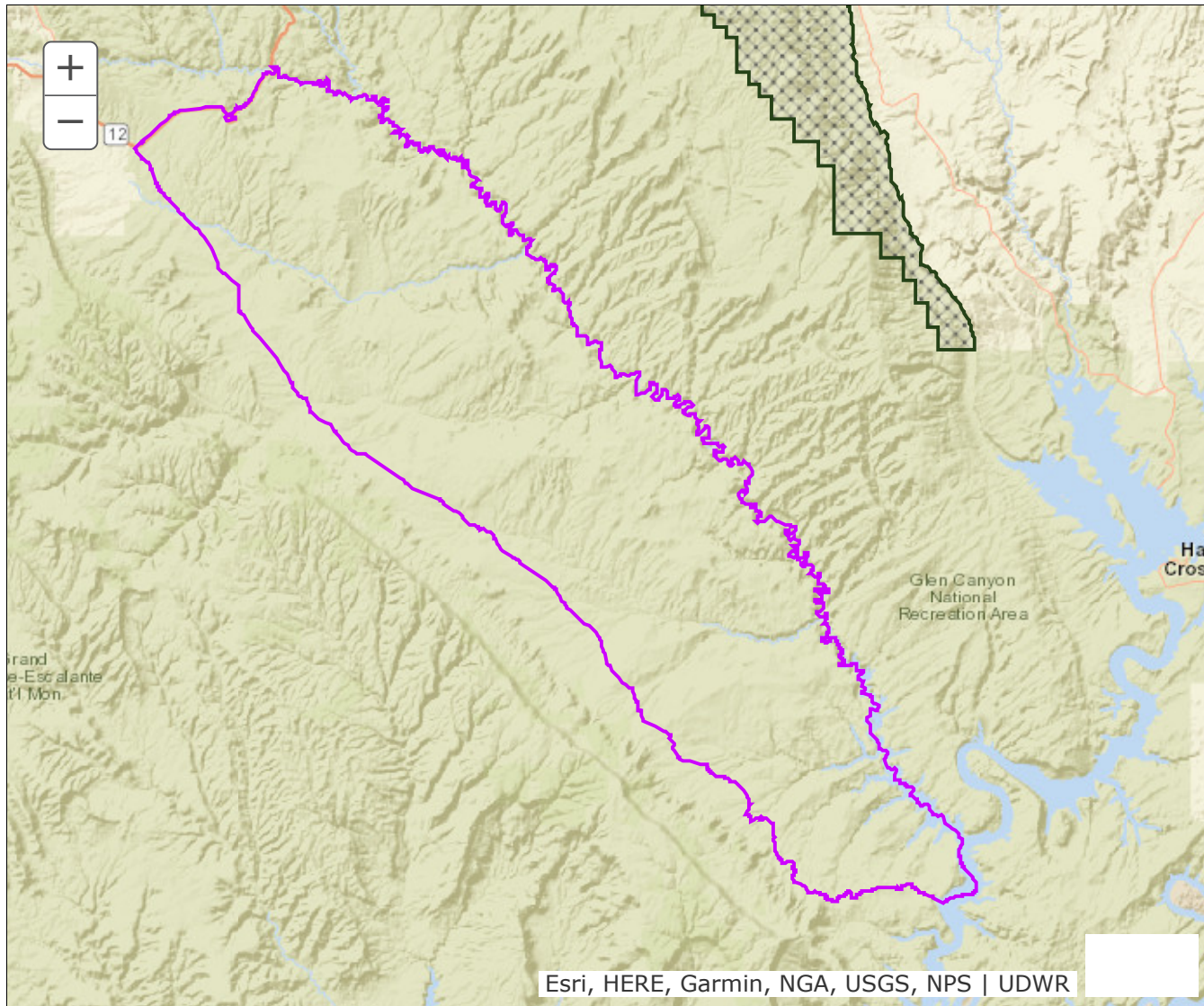


BOUNDARY RECOMMENDATION

UNIT Escalante, West



Updated Boundary: Garfield and Kane counties—Boundary begins at SR-12 and Hole-in-the-Rock road; northeast along SR-12 to the Escalante River; southeast along the Escalante River to the north shore of Lake Powell; south along the north shore of Lake Powell to the Hole-in-the-Rock road; northwest along this road to SR-12. USGS 1:100,000 Maps: Escalante, Kanab, Panguitch, Smoky Mountain. Boundary questions? Call the Cedar City office, 435-865-6100. - A hunting permit does not authorize the permit holder to hunt on Native American trust lands, CWMUs (unless you specifically have a permit for that CWMU) or on National Park lands. Furthermore, it is the responsibility of hunters to learn if hunting is allowed and what specific rules and regulations may apply on National Monuments, National Wildlife Refuges, State Parks, UDWR Wildlife and Waterfowl Management areas, military installations and within the boundaries of cities, towns and municipalities. Written permission is required to hunt private lands.