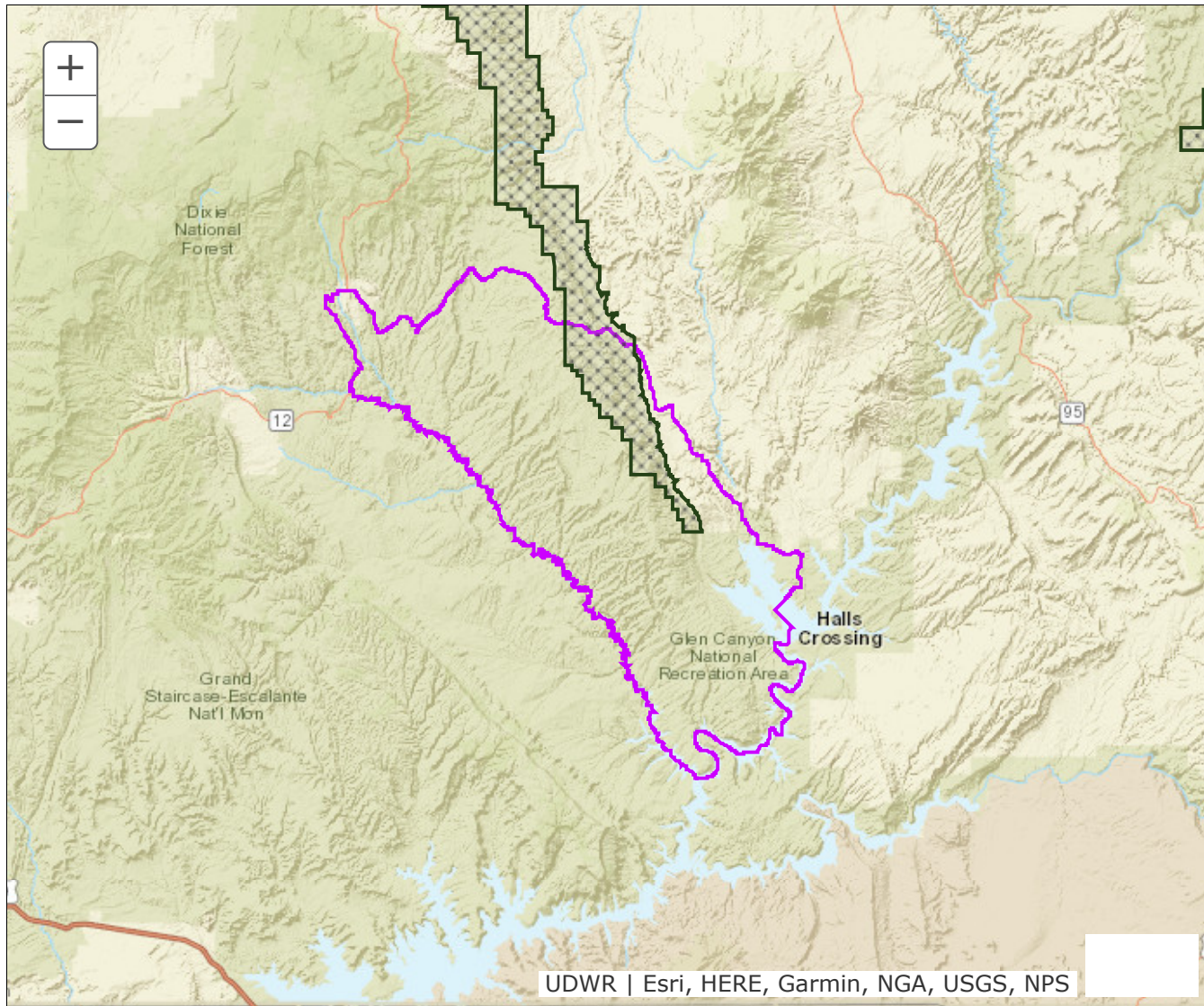


BOUNDARY RECOMMENDATION

UNIT Escalante, East



Updated Boundary: Garfield and Kane counties—Boundary begins at SR-12 and the Burr Trail road in Boulder, Utah; southeast along the Burr Trail road to the north shore of Lake Powell; southwest along the north shore of Lake Powell to the Escalante River; northwest along the Escalante River to SR-12; northeast along this road to the Burr Trail road in Boulder, Utah. USGS 1:100,000 Maps: Escalante, Kanab, Panguitch, Smoky Mountain. Boundary questions? Call the Cedar City office, 435-865-6100. - A hunting permit does not authorize the permit holder to hunt on Native American trust lands, CWMUs (unless you specifically have a permit for that CWMU) or on National Park lands. Furthermore, it is the responsibility of hunters to learn if hunting is allowed and what specific rules and regulations may apply on National Monuments, National Wildlife Refuges, State Parks, UDWR Wildlife and Waterfowl Management areas, military installations and within the boundaries of cities, towns and municipalities. Written permission is required to hunt private lands.