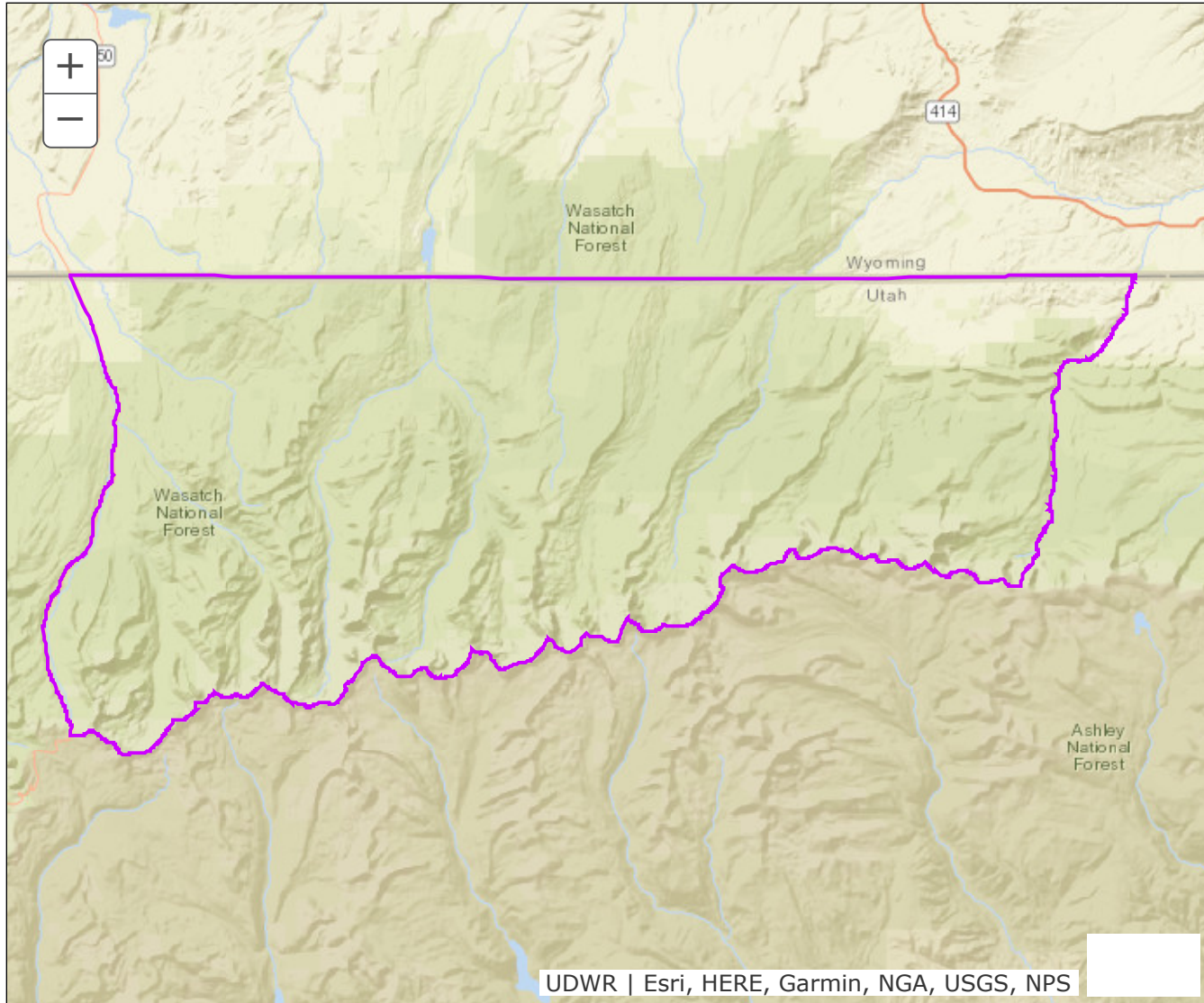


BOUNDARY RECOMMENDATION

UNIT North Slope, Summit

SPECIES Elk



Updated Boundary: Summit County--Boundary begins at the Utah-Wyoming state line and SR-150; south on SR-150 to the Summit-Duchesne county line at Hayden Pass; east on this county line to the head of Burnt Fork drainage bottom(Divide Pass/Island Lake); north along this drainage bottom to the Utah-Wyoming state line; west on this state line to SR-150. Excludes all CWMUs. USGS 1:100,000 Maps: Kings Peak. Boundary questions? Call Ogden office, 801-476-2740.