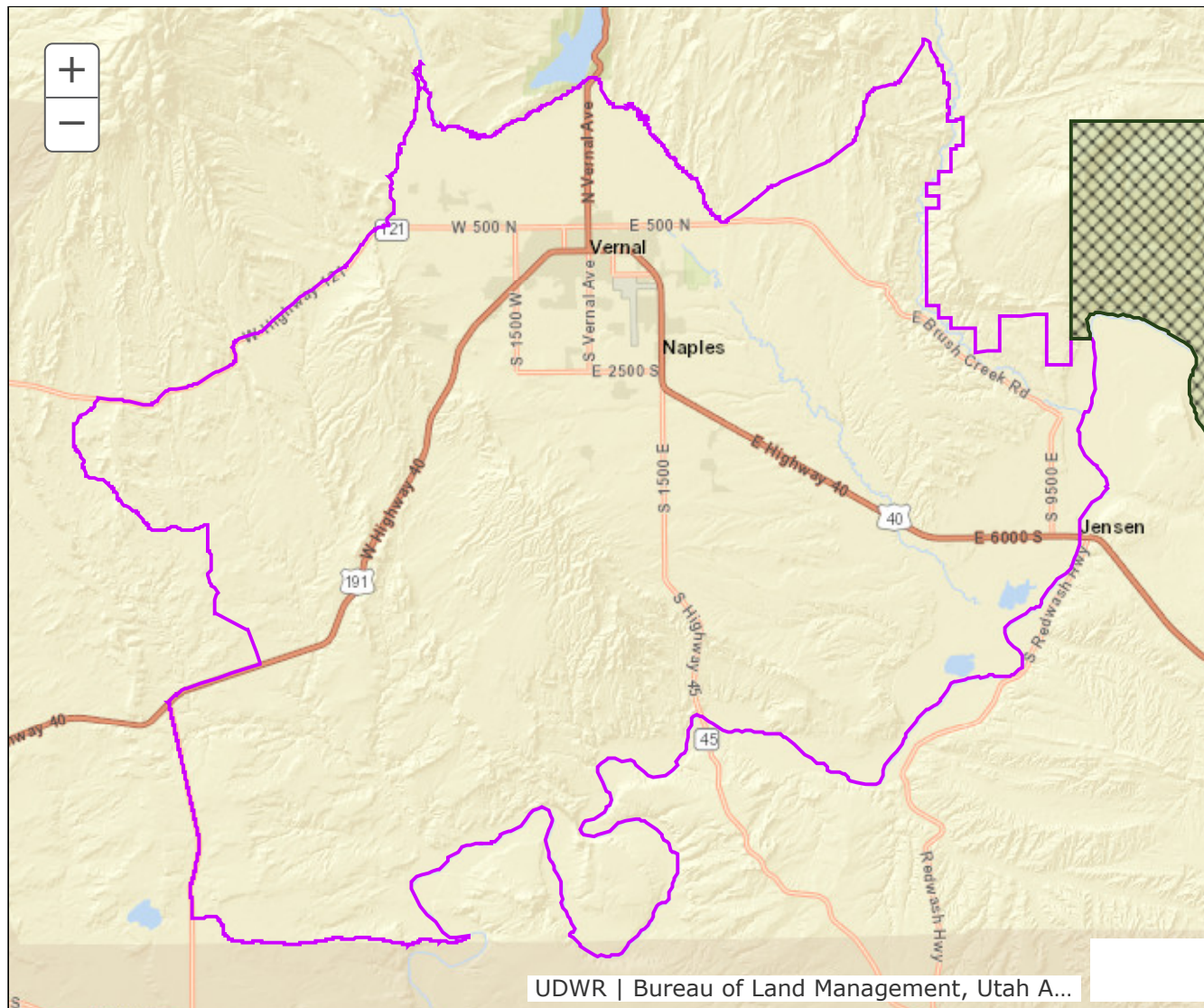


## BOUNDARY RECOMMENDATION

**UNIT** South Slope, Ashley Valley

**SPECIES** Deer



**Updated Boundary:** Boundary begins at the Diamond Mountain road and the Brush Creek road; south along the Brush Creek road to the Island Park road; east along this road to the BLM boundary; southeast along this boundary to the Dinosaur National Monument boundary; east along this boundary to Green River; southwest along this river to the Hammaker Bottom road; west along this road to state SR-88; north along this road to SR-191; east along this road to the 12 Mile road; north along this road to SR-121; northeast along this road to the High Line Canal in Vernal; north on this canal to Ashley Creek; east along this creek to the Rock Point canal; east along this canal to the Diamond Mountain road, northeast on this road to the Brush Creek road.