



Cinnamon Creek WMA

Habitat Management Plan



Utah Division of
Wildlife Resources

A closer look at the WMA

- Size: 8,148 acres
- Acquired in 2021
- Two primary purposes:
 - Provide habitat for big game, upland game, Bonneville cutthroat trout and other fish and wildlife
 - Provide public access for hunting, angling and other wildlife-related recreation



Funding

- Legislative appropriation (\$10 million)
- DWR Conservation Permit Program funds
- U.S. Fish and Wildlife Service (Pittman-Robertson funding)
- Sportsmen for Fish and Wildlife
- Mule Deer Foundation
- Rocky Mountain Elk Foundation
- The Nature Conservancy



WMA habitat management plan

Per Utah Code (23A-6-301), every wildlife management area must have a plan. Those plans include details about:

- Proposed or anticipated uses
- Management limitations or conditions
- All existing conditions
- Desired future condition of the area
- Strategies to achieve desired future condition
- Any reallocated forage, water or other resources

The DWR formed a Cinnamon Creek WMA Habitat Management Plan Committee in 2023. It had 11 key partners and community stakeholders.



WMA habitat condition



In general, most habitat types on the WMA are in very good condition.



There were a few issues when the DWR first acquired the WMA, mostly broken/cut fences and illegal/damaged roads.



The DWR is addressing lingering issues on a project-by-project basis.

Goals and objectives

The management of the WMA also takes into account the goals, objectives and strategies of other DWR planning efforts:

- Utah Wildlife Action Plan
- DWR strategic plan
- Individual species management plans



Species that need conservation help

The WMA is home to multiple “Species of Greatest Conservation Need” identified in Utah’s Wildlife Action Plan. They include:

- Greater sage-grouse
- Sharp-tailed grouse
- Flammulated owl
- American goshawk
- Lewis’s woodpecker
- Little brown bat
- Hoary bat



Game species on the WMA



Bonneville
cutthroat trout
(genetically pure
population)



Moose



Elk



Mule deer



Dusky grouse



Turkey



Ruffed grouse

Key habitats on the WMA

Terrestrial key habitats

- Aspen-conifer
- Subalpine grassland
- Mountain sagebrush
- Mountain shrub

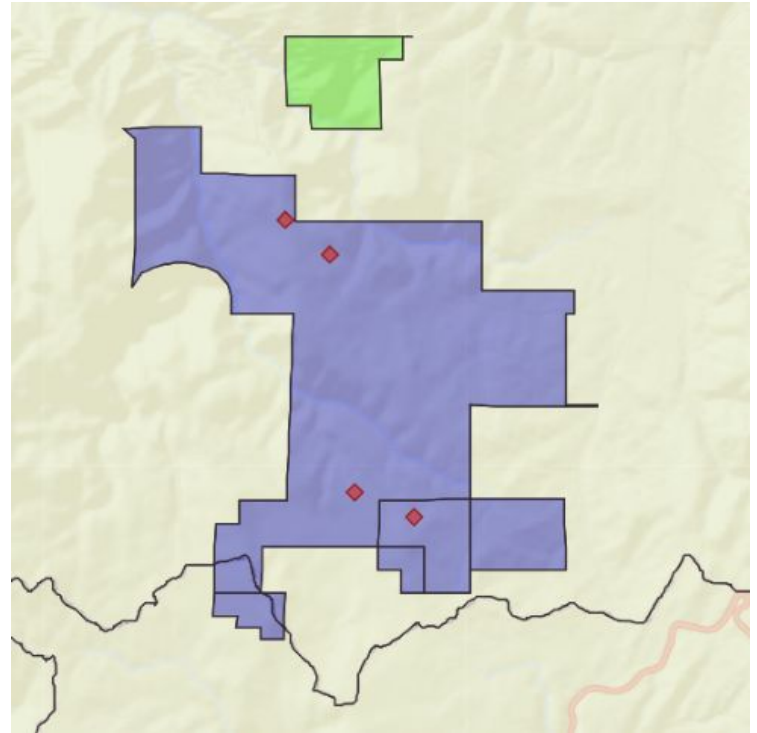
Aquatic key habitats

- Wetlands
- Streams and rivers
- Springs



Utah big game range trend studies

- These studies monitor big game range quality and habitat on a five-year rotating cycle
- **wildlife.utah.gov/range-trends**
- Four studies added at Cinnamon Creek WMA in 2022 (see red diamonds on map):
 - Two aspen sites
 - One mountain big sagebrush site
 - One silver sagebrush site



Habitat projects on the WMA

- Restoring wet meadows and areas along creeks and streams
 - Beaver dam analogs and Zeedyk structures
- Increasing forage production for big game by:
 - Thinning mule-ears monocultures
 - Treating invasive annual grasses
 - Treating whitetop, Canada thistle, dyer's woad, musk thistle
- Monitoring areas in prime condition (aspen stands)



Signage on the WMA

More than 40 education, safety and outreach signs have been placed throughout the WMA:

- Habitat restoration
- Road closed
- Grouse identification
- Many others

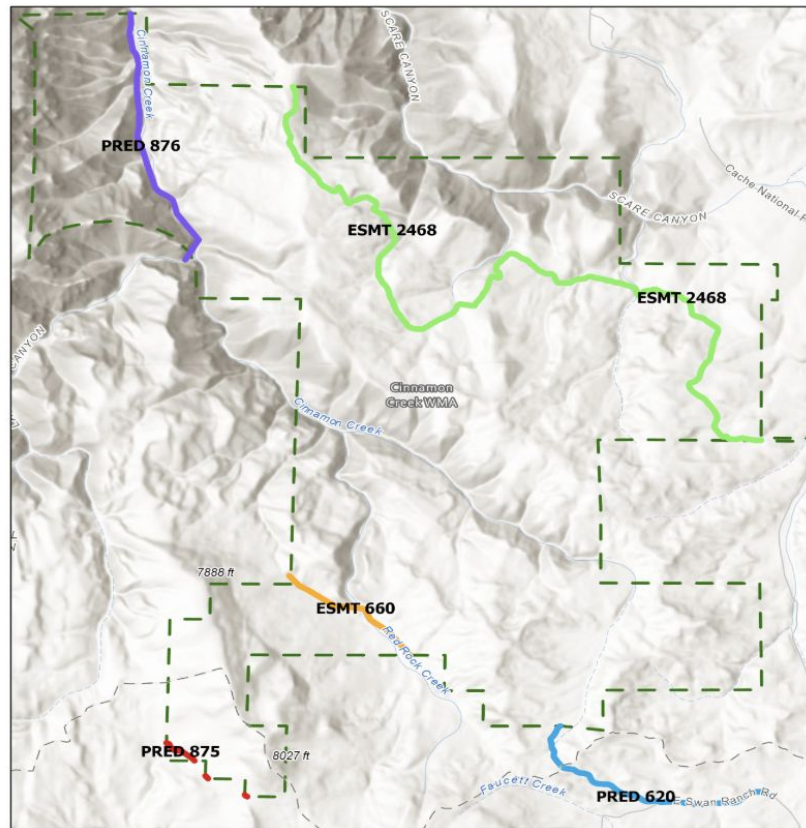


Easements on the WMA

There are **five easements** on the WMA (see map for details).

Cache County holds two of them for portions of the La Plata and Mineral Point roads that cross the property:

- Allow for road improvements to a maximum of 33 feet in width
- Trees cannot be removed without the DWR's permission



- ESMT 2468 - Issued to Cache County for an access easement on Mineral Point Road
- PRED 620 - DWR/Whisper Ridge reciprocal easement for administrative access to WMA
- PRED 876 - Issued to Cache County for an access easement on La Plata Road
- ESMT 660 - Whisper Ridge Ranch holds a livestock trailing easement for 2-3 days each year.
- PRED 875 - Road issued to Weber County and Whisper Ridge for perpetual term
- Cinnamon Creek WMA

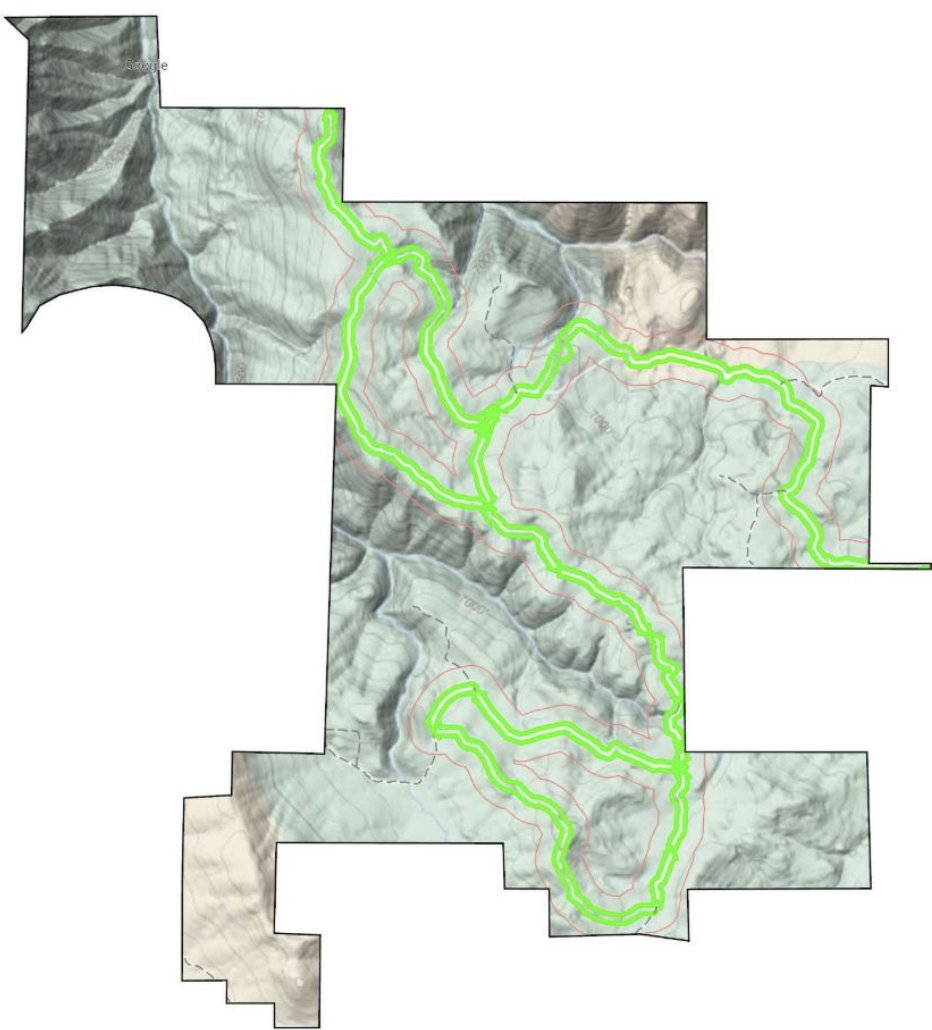
Roads on the WMA

Public access to the WMA is permitted year round, but there are restrictions on methods of travel — to protect habitat — depending on the time of year.



Northern and southern loop road

- Length: 15.6 miles
- Seasonally open to motorized vehicles:
Aug. 10 to Nov. 14
- Motorized vehicle use is prohibited: **Nov. 15 to Aug. 9**
(to prevent road damage)



Livestock grazing

Per Utah admin. rule R657-28-5, the DWR can authorize domestic livestock grazing on DWR lands **if it's necessary to maintain or improve wildlife habitat.**



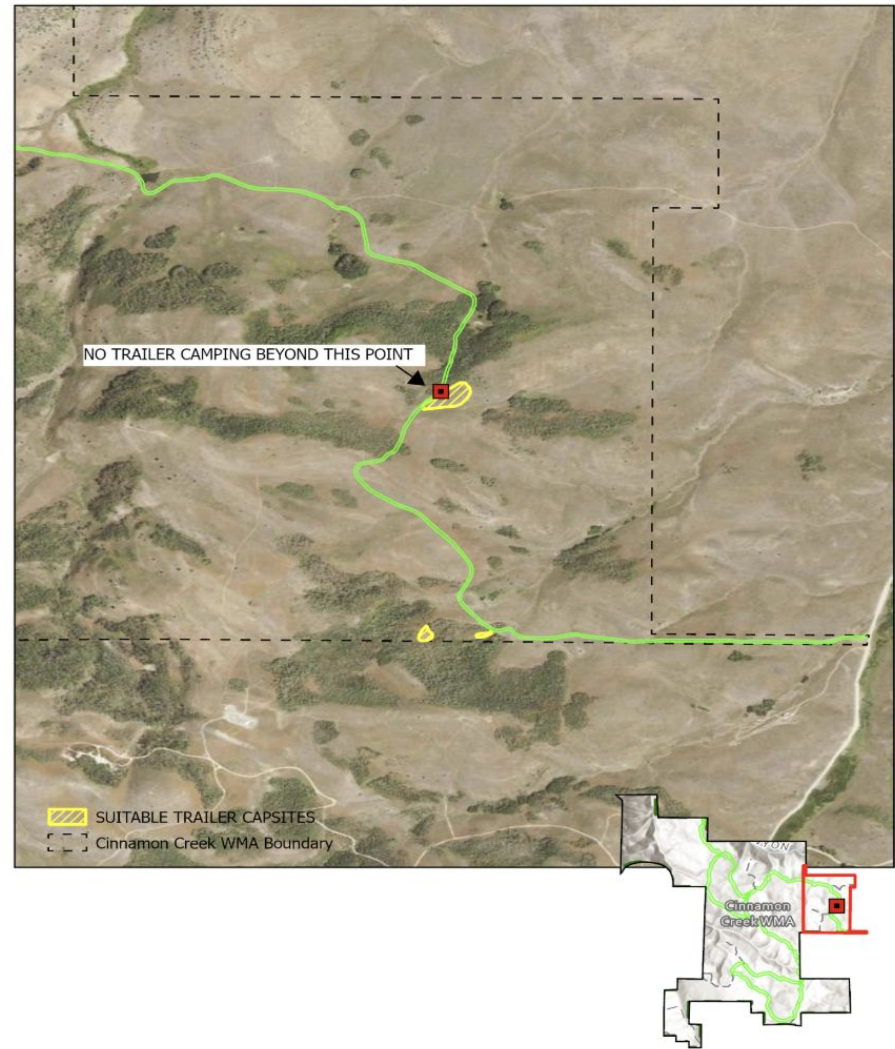
Targeted grazing on the WMA

- Reduce noxious weeds and invasive grass fuel loads
- Increase forage diversity
- Use wildlife-friendly fencing design
- Collaborate on e-collars and virtual fencing
- Partner with neighbors who have trailing easements



Camping trailers

Camping trailers are prohibited on the WMA, except in designated areas (see details on map).



Ongoing habitat work

- Utah's Watershed Restoration Initiative projects
- Dedicated Hunter projects
- Collaboration with partners



Thank you!



Utah Division of
Wildlife Resources

