

UTAH DIVISION OF WILDLIFE RESOURCES

# BIG GAME APPLICATION

GUIDEBOOK



2026

BUCK DEER • BULL ELK • BUCK PRONGHORN • BULL MOOSE  
BISON • BIGHORN SHEEP • MOUNTAIN GOAT

## KNOW THE LAWS

This guidebook—along with the *2026 Utah Big Game Field Regulations Guidebook* (available in June 2026)—summarizes the rules and laws that regulate big game hunting in Utah. Although these books are convenient quick-reference documents for Utah big game regulations, they are not all-encompassing resources.

For an in-depth look at the state's big game hunting laws and rules, visit [wildlife.utah.gov/rules](http://wildlife.utah.gov/rules).

You can use the references in this guidebook—such as *Utah Admin. Rule R657-5-24* and *Utah Code § 23A-5-207*—to search the division's website for the detailed statute or rule that underpins the guidebook summary.

If you have questions about a particular rule, call or visit the nearest division office.

### Who makes the rules?

The Utah Wildlife Board passes the rules and laws summarized in this guidebook.

There are seven board members, and each serves a six-year term. Appointed by the governor, board members are not division employees.

The division's director serves as the board's executive secretary but does not have a vote on wildlife policies.

Before board members make changes to wildlife rules, they listen to recommendations from division biologists. They also receive input from the public and various interest groups via the regional advisory council (RAC) process.

If you have feedback or suggestions for board members, you can find their contact information online at [wildlife.utah.gov](http://wildlife.utah.gov).

### Wildlife Board members

Bob Christensen	Gary Nielson, <i>Chair</i>
Ryan Foutz	Paula Richmond,
Kent Johnson	<i>Vice Chair</i>
Justin Oliver	Riley Peck,
Chris Robinson	<i>Division Director &amp; Executive Secretary</i>

## CONTACT US

### Turn in a poacher

Phone: 800-662-3337

Text: 847411

Online: [wildlife.utah.gov/utip](http://wildlife.utah.gov/utip)

### Division offices

Offices are open 8 a.m.–5 p.m.,  
Monday through Friday.

#### Salt Lake City

1594 W North Temple

Box 146301

Salt Lake City, UT 84114-6301

801-538-4700

#### Central Region

1115 N Main Street

Springville, UT 84663

801-491-5678

#### Northeastern Region

318 N Vernal Avenue

Vernal, UT 84078

435-781-9453

#### Northern Region

515 E 5300 S

Ogden, UT 84405

801-476-2740

#### Southeastern Region

319 N Carbonville Road, Ste A

Price, UT 84501

435-613-3700

#### Southern Region

1470 N Airport Road

Cedar City, UT 84721

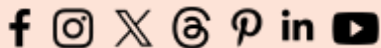
435-865-6100

#### Washington County Field Office

451 N SR-318

Hurricane, UT 84737

435-879-8694



# CONTENTS

3	What's new	21	Hunter Mentoring Program
5	Antlerless big game hunting	23	Why bonus points matter
8	2026 season dates	24	Why preference points matter
10	2027 sportsman permits	26	Multiseason hunts for deer and elk
12	Gathering shed antlers or horns	27	Mandatory reporting
13	2026 permit sales dates	27	Hunts with special circumstances
14	License, permit and program fees	28	Obtain up to three elk permits
17	Basic requirements	31	Apply for big game permits
18	Utah's Trial Hunting Program	33	After you apply
19	Carry your permit	37	Dedicated Hunter Program
20	Prepare to apply	38	Opportunities for young hunters
21	Review the hunt tables	40	Hunt reference maps
21	See maps and boundaries online	43	Hunt tables
21	Obtain permission to hunt private property	69	CWMU hunt tables
		79	Definitions

---

## WHAT'S NEW

**Apply for hunts with the NEW online draw system:** The division distributes permits for many big game hunts through a drawing, and the application period is March 19 to April 23, 2026. Apply online at [utahdraws.com](http://utahdraws.com) (the new URL starting this year), or call the new draw hotline at 855-883-7297. If you are successful in drawing a permit, you will be notified via email by May 31. For more information, see page 31.

**Permit sales dates in July:** Any permits remaining after the big game drawing will go on sale during different days in July. For all of the permit sales dates, see the table on page 13.

**Digital-only guidebook:** As of Sept. 1, 2025, this guidebook (and several others) will be available as a digital edition only, accessible on the DWR website ([wildlife.utah.gov/guidebooks](http://wildlife.utah.gov/guidebooks)) and downloadable in the Utah Hunting and Fishing mobile app. This shift will significantly reduce the state's increasing costs for printing, shipping, labor and storage, and reduce over-ages and paper waste. Our staff at DWR offices will be available to assist customers who need digital guidebook information in print form. The *Utah Big Game Field Regulations Guidebook* and *Utah Fishing Guidebook* will be available in print and digital formats.

**Research antlerless hunts online:** In late May 2026, visit [wildlife.utah.gov/guidebooks](http://wildlife.utah.gov/guidebooks) to find all of the information you'll need to research Utah's antlerless hunts. The *Utah Antlerless Guidebook* includes application dates, rules, hunt tables, boundaries and maps. Beginning this year, the antlerless hunt application information will be formatted similarly to our standard guidebooks (instead of being several webpages) and will also be available on the Utah Hunting and Fishing mobile app. The antlerless application period runs from June 9–23, 2026.

**Apply for bonus or preference points:** The 2026 big game bonus or preference point application period is March 19–April 23. If you miss the deadline, there will be a second opportunity during the June 9–23 antlerless application period to apply for big game bonus or preference points. See pages 23–24 for details about why bonus and preference points matter, and pages 31–32 for more about big game application periods.

**Mule deer management plan:** The Utah Wildlife Board approved a new mule deer management plan that will be in effect through 2030. Part of this updated plan includes modifying some hunting units' buck-to-doe ratio objectives and implementing strategies to improve hunter opportunity and satisfaction. Learn more about the plan at [wildlife.utah.gov/muledeer](https://wildlife.utah.gov/muledeer).

**New hunts and season dates:** Look for hunts noted as “(new)” in the hunt tables that begin on page 43. Season dates also change every year, so please check them carefully before applying for hunts. You can find this year's dates in the tables that begin on page 8.

**Targeted hunts to address chronic wasting disease:** All hunters with a general-season any legal weapon permit on the Ogden unit are required to submit a CWD sample if they harvest a deer beginning this year. The CWD sample requirement for limited-entry any legal weapon buck deer hunters in the Castle Valley and the Moab Valley areas will continue in 2026. Learn more about CWD and what we're doing to stop the spread of it in Utah at [wildlife.utah.gov/cwd](https://wildlife.utah.gov/cwd).

**Changes to West Cache elk unit:** The board also approved modifications to the hunt boundary for the 2026–27 West Cache elk extended archery hunt, and extended the season to Jan. 31. (Previously, it ended on Dec. 15.) These changes will help address depredation issues in the areas that see property damage and safety concerns, which have been increasing in recent years.

**Nonresident fee increase:** In the 2025 session, the Utah Legislature authorized higher nonresident fees to help fund wildlife conservation and habitat improvement. These nonresident fee increases began July 1, 2025 for hunting, fishing and combination licenses, and Sept. 1, 2025 for hunting application fees and hunting permits. See page 14 for details, and visit [wildlife.utah.gov/licenses/fees](https://wildlife.utah.gov/licenses/fees) for full list of Utah's license and permit fees.

**E-tagging option:** Hunters can now submit an e-tag through the Utah Hunting and Fishing app. It's the same as notching a paper tag, and fulfills mandatory harvest reporting requirements upon completion. Learn more about this convenient new service at [wildlife.utah.gov/e-tag](https://wildlife.utah.gov/e-tag). Instructions and guidance will also be available in the upcoming *Utah Field Regulations Guidebook*.

**Updated maps and boundaries:** Use the Utah Hunt Planner at [hunt.utah.gov](https://hunt.utah.gov) to find unit maps, boundaries and information on the hunts you want to apply for. To learn more, see page 21.

**Permits for lifetime license holders:** If you're a lifetime license holder, see the box on page 36 for more information about obtaining your general-season deer permit.

## Important reminders

**Report your harvest, it's required:** Harvest reporting is mandatory for all general-season buck deer and bull elk hunts, as well as all limited-entry, once-in-a-lifetime and antlerless hunts. Filing a report is required within 30 days of the end of the hunt—or, for hunts ending Jan. 16 or later, by Feb. 15—even if a hunter does not harvest an animal. For details about how to report, reporting requirements, restrictions and potential fines, see page 30 or visit [wildlife.utah.gov/harvest](http://wildlife.utah.gov/harvest).

**Download guidebooks and more to your DWR mobile app:** You can download Utah's hunting and fishing guidebooks using your Utah DWR mobile app. The app makes it easy to read, search and navigate this guidebook and others. You can keep your hunting or combo license and any DWR course completion certificates on the app, too. Learn more about the app and download it at [wildlife.utah.gov/mobileapp](http://wildlife.utah.gov/mobileapp).

**Edit your application:** You may edit your application free of charge at any time during the application period (before 11 p.m. MDT on April 23, 2026). You will not be charged any additional fees, unless you completely withdraw your application and resubmit. See page 31 for more information.

**View permit numbers during the application period:** Hunters can access proposed permit numbers for each hunt unit beginning in April. This information will be available through the Utah Hunt Planner at [hunt.utah.gov](http://hunt.utah.gov).

**Field regulations available in June:** The *2026 Utah Big Game Field Regulations Guidebook* will be available in June 2026. It will include the rules for both big game and antlerless hunting.

### Antlerless big game hunting

Antlerless hunting is the primary tool biologists use to control the size of big game herds.

You can apply online for one or more antlerless big game permits from June 9–23, 2026.

**New:** The antlerless hunt application information will be formatted like our other digital guidebooks (instead of being several webpages) and will also be available on the Utah Hunting and Fishing mobile app. Visit [wildlife.utah.gov/antlerless](http://wildlife.utah.gov/antlerless) or the app in late May 2026 to see which permits are available.

Antlerless drawing results will be available on or before July 8, 2026. If any antlerless permits remain available after the drawing, you can purchase them starting July 28.

**Remember:** If you obtain an antlerless permit that remains available after the drawing, you will lose any preference points that you've accrued for that species.

The *2026 Utah Big Game Field Regulations Guidebook* will be available in June. That guidebook will contain information you can use in the field during your big game and antlerless hunts.

**Extended archery only option:** Hunters may apply for an “extended archery only” general-season deer permit that allows successful applicants to hunt only the extended archery hunt areas during the extended season dates. See page 9 to learn more about extended archery opportunities.

**Muzzleloader technology restrictions:** Scopes stronger than 1x power are not allowed on muzzleloaders for all muzzleloader hunts (general-season, limited-entry and management). Only open sights, peep sights, a red dot, or scopes with 1x power or less are allowed on muzzleloaders during muzzleloader hunt seasons. (Scopes of any power are allowed on muzzleloaders during any-legal-weapon hunts.) No scopes of any kind are allowed on HAMSS or restricted weapons hunts. Carefully review the list of muzzleloader requirements on page 26 before you apply for a hunt unit with a restricted weapons hunt.

**Restricted weapons hunts on three units continue in 2026:** In 2024, the board approved a research study to implement weapons technology restrictions for “restricted weapons hunts” on the Beaver, West; Boulder/Kaiparowits; Cache; and Thousand Lakes units. See page 26 and the hunt tables beginning on page 45 for details.

**Options for military members:** Active military personnel may be eligible to purchase a bonus or preference point if they are deployed during the big game application period. For details, see the information box on page 10 or visit [wildlife.utah.gov/military](https://wildlife.utah.gov/military).

**Multiseason deer hunting for youth:** Youth who obtain a general-season any legal weapon or restricted rifle permit may also hunt the other seasons on that unit, but they must use the appropriate weapon type for each season. For details, see page 29.

**Antlerless elk permit rules:** Antlerless elk permits may be used only during the season dates printed on your permit. See page 23 for details.

**Hunter Mentoring Program:** The Hunter Mentoring Program allows a young person to share a mentor’s permit. To learn more about the program, see the information box on page 20 or visit [wildlife.utah.gov/mentoring](https://wildlife.utah.gov/mentoring).

**Hunting license required:** Before you can apply for a 2026 big game permit, bonus point or preference point, you must have a valid Utah hunting or combination license. Please see page 17 for more information. For the exceptions available to active, deployed military members, please see the information box on page 10.

**Discounted licenses for disabled veterans:** The division offers discounted hunting and combination licenses to Utah veterans who were disabled in the line of duty. For details, see page 27.

**Shed antler gathering:** Utah residents and nonresidents may gather shed antlers year-round. However, you must complete an antler gathering ethics course if you intend to gather sheds between Jan. 1 and May 31. Additionally, commercial antler buyers must have a valid certificate of registration. See page 12 or visit [wildlife.utah.gov/antler-gathering](https://wildlife.utah.gov/antler-gathering) for more information.

**Guidebook correction:** If errors are found in this guidebook after it is published, the division will correct them in the online copy. Visit [wildlife.utah.gov/guidebooks](https://wildlife.utah.gov/guidebooks) to view digital versions of all the division’s guidebooks.

**Protection from discrimination:** The division receives federal financial assistance from the U.S. Fish and Wildlife Service. Under Title VI of the Civil Rights Act of 1964, Section 504 of the Rehabilitation Act of 1973, Title II of the Americans with Disabilities Act of 1990, the Age Discrimination Act of 1975, Title IX of the Education Amendments of 1972, the U.S. Department of the Interior and its bureaus prohibit discrimination on the basis of race, color, national origin, age, disability or sex. If you believe that you have been discriminated against in any facility, program, or activity, or if you need more information, please write to:

Office of Diversity, Inclusion, and Civil Rights  
U.S. Department of the Interior  
1849 C Street, NW  
Washington, D.C. 20240

**Private lands:** The division cannot guarantee access to any private land. You must obtain documented permission from the landowner or the landowner's authorized representative before hunting or trapping on private lands. For more information, please see *Utah Code* §§ 23A-5-310 and 23A-5-317.

**Division funding:** The division is mostly funded by the sale of hunting and fishing licenses and through federal aid made possible by an excise tax on the sale of firearms and other hunting- and fishing-related equipment.

## Possible habitat work in your hunt area

Throughout the year, the division works with other government agencies—including the U.S. Forest Service and the Bureau of Land Management—to complete thousands of acres of habitat-improvement work on Utah's public lands.

Those projects range from plant removal to prescribed burns and from helicopter reseeding to large-scale planting projects. They help restore habitat for mule deer, elk, sage-grouse and other species, providing them with the food and cover they need to thrive on the landscape.

Please be aware that projects occur across the state, year-round. This means that sometimes a project may occur in a portion of your hunt area, during the hunt.

If this is something you're concerned about, you may want to contact the appropriate land-management agency before you apply for a particular hunt area. They may be able to give you a tentative list of projects for the coming year.

See a list of past, current and proposed restoration projects at [watershed.utah.gov](https://watershed.utah.gov).

# 2026 SEASON DATES

## General-season dates

Buck deer hunts	Weapon type	Season dates
General-season units	Archery	Aug. 15–Sept. 11
	Extended archery	See page 9
	Muzzleloader	Sept. 23–Oct. 1
	Restricted muzzleloader	Sept. 23–Oct. 1
	<b>Early</b> any legal weapon (rifle)	Oct. 7–11
	Any legal weapon (rifle)	Oct. 17–25
	Restricted rifle	Oct. 17–25

Bull elk hunts	Weapon type	Season dates
Any bull units	Archery*	Aug. 15–Sept. 16
	Extended archery	See page 9
	<b>Early</b> any legal weapon (rifle)	Oct. 3–9
	<b>Late</b> any legal weapon (rifle)	Oct. 10–16
	Muzzleloader	Oct. 28–Nov. 5
Spike units	Archery	Aug. 15–Sept. 4
	Extended archery	See page 9
	Any legal weapon (rifle)	Oct. 3–15
	Muzzleloader	Oct. 28–Nov. 5
Youth hunts	General-season youth elk permit	See page 39 for dates
	Draw-only youth any bull/hunter's choice elk	Sept. 12–22

\*No general-season archery elk hunt on the Paunsaugunt unit.

**DOUSE. STIR.  
CHECK. REPEAT.**

Extinguish campfires. Prevent wildfires.



# Extended archery season dates

Utah Admin. Rule R657-5-23

As long as you obtain an archery buck deer or bull elk permit in 2026—and you complete the required extended archery ethics course—you may also hunt any of Utah’s extended archery areas during the seasons listed in the table below.

Instead of applying for a specific archery unit, hunters may apply for an extended archery only general-season buck deer permit to hunt on any of the extended archery areas during the extended archery season dates. You can apply for this permit in the big game application by selecting hunt number DB0008. This permit will only be valid on the extended archery units. See the table below for areas and season dates.

**Remember:** The online archery ethics course is an annual requirement for all archers who want to hunt the extended areas and seasons; this is also required for the extended archery only draw permit. To take the course, visit [wildlife.utah.gov/extendedarchery](http://wildlife.utah.gov/extendedarchery) before the extended seasons begin. After you successfully complete the course, you must carry proof of completion (either print or digital) with you in the field.

To see maps and boundaries for all of the extended archery areas, visit [hunt.utah.gov](http://hunt.utah.gov).

**Important:** if you are hunting the extended archery season with your limited-entry buck deer or bull elk permit, you are still required to submit your harvest survey within 30 days of the end of the season printed on your permit. (General-season buck deer and bull elk hunters have until 30 days after the end of their respective extended archery season to submit.)

Deer hunts (either sex)	Weapon type	Season dates
<ul style="list-style-type: none"> <li>• Nine Mile, Green River Valley</li> <li>• Sanpete Valley</li> <li>• South Wasatch</li> </ul>	Extended archery	Sept. 12–Oct. 15
<ul style="list-style-type: none"> <li>• Box Elder, West Bear River</li> <li>• Herriman South Valley</li> <li>• Ogden</li> <li>• Uinta Basin</li> <li>• Utah Lake</li> <li>• Wasatch Front</li> <li>• West Cache</li> </ul>	Extended archery	Sept. 12–Nov. 30
Elk hunts (either sex)	Weapon type	Season dates
<ul style="list-style-type: none"> <li>• Uinta Basin</li> <li>• Wasatch Front</li> </ul>	Extended archery	Aug. 15–Dec. 15
<ul style="list-style-type: none"> <li>• West Cache</li> </ul>	Extended archery	Aug. 15–Jan. 31

## Sportsman and statewide conservation permit season dates

Only Utah residents can apply for sportsman permits. See the information box below to learn more.

Hunt #	Species <sup>^</sup>	Season dates
DB0007	Buck deer <sup>‡</sup>	<b>Archery:</b> Aug. 15–31, 2026 <b>Any legal weapon:</b> Sept. 1, 2026–Jan. 15, 2027
EB1000	Bull elk*	<b>Archery:</b> Aug. 15–31, 2026 <b>Any legal weapon:</b> Sept. 1, 2026–Jan. 15, 2027
PB1000	Buck pronghorn	<b>Archery:</b> Aug. 15–31, 2026 <b>Any legal weapon:</b> Sept. 1–Nov. 15, 2026
MB1000	Bull moose	<b>Any legal weapon:</b> Sept. 1–Nov. 15, 2026
BI1000	Bison <sup>‡</sup>	<b>Any legal weapon:</b> Aug. 1, 2026–Jan. 31, 2027
RS0001	Rocky Mountain bighorn sheep* <sup>‡</sup>	<b>Any legal weapon:</b> Sept. 1–Dec. 31, 2026
DS1000	Desert bighorn sheep	<b>Any legal weapon:</b> Sept. 1–Dec. 31, 2026
GO1000	Mountain goat	<b>Any legal weapon:</b> Sept. 1–Dec. 31, 2026
BR1000	Black bear	Season dates and open units are listed in the <i>Black Bear, Cougar &amp; Furbearer Guidebook</i>
TK0001	Bearded turkey (2-bird permit)	<b>Any legal weapon:</b> April 1–May 31, 2026

<sup>^</sup> You may only hunt on open hunting units for each respective species.

\* You may not take an elk or Rocky Mountain bighorn sheep on the Box Elder, Pilot Mtn hunting unit.

<sup>‡</sup> Antelope Island is not an open unit. There are only a couple of permits that authorize hunting on the island. Those permits are listed in the hunt tables on page 49 and page 65.

### 2027 sportsman permits

Utah Admin. Rules R657-41 and R657-62-24

Next year, you could be the envy of every hunter you know. If you draw a 2027 Utah sportsman permit, you'll have one of the most exciting hunting permits the state offers. Hunters want these permits because:

- They typically have an extended hunting season.
- They allow you to hunt in nearly any unit across the state. (See the footnotes in the table above for additional information.)
- Only Utah residents can apply for them.

One sportsman permit is usually offered each year for each of the following species: buck deer, buck pronghorn, bull elk, bull moose, desert bighorn ram, Rocky Mountain bighorn ram, hunter's choice bison and hunter's choice mountain goat. Sportsman permits are also offered for black bear and wild turkey.

You can apply for a sportsman permit in late October 2026. For more information about these permits, and the few restrictions that apply, please visit [wildlife.utah.gov/sportsman](http://wildlife.utah.gov/sportsman) in mid-October 2026.

## CWMU season dates

The Wildlife Board has established timeframes for hunting bucks and bulls on Cooperative Wildlife Management Units. The actual hunt dates for each CWMU can vary.

Hunters should expect to hunt at least five days, generally between Sept. 1 and Oct. 31. Contact the operator of the CWMU to see what the actual hunt days will be this year. In some instances it may be outside of the Sept. 1–Oct. 31 dates.

Before you apply for a CWMU permit, visit [wildlife.utah.gov/cwmu](http://wildlife.utah.gov/cwmu). You'll find detailed information about season dates, CWMU rules, hunt success and how to contact the operator. If you draw a permit, you **must** contact the CWMU operator to confirm your season dates.

Keep in mind that whether you draw or purchase a permit, you may not obtain more than one of each of the following permits during the 2026 big game season:

- Buck deer permit
- Bull elk permit
- Buck pronghorn permit

For example, if you draw a general-season buck deer permit—and then decide you want to hunt on a CWMU instead—you must surrender your general-season permit **before** the opening day of the season listed on your permit and before redeeming the private CWMU voucher for a permit.

**Reminder:** If you choose to surrender any big game permit you've drawn (to purchase/obtain a private CWMU voucher, for example), be sure to do so at least 30 days before your hunt begins in order to keep the preference or bonus points that helped you draw the original permit. You will not earn a point for the current year. **If you surrender a big game permit less than 30 days before the season opens, you will lose all of your previously accrued bonus or preference points for that species and you will not earn a point for the current year.**

As long as you surrender a big game permit before the season opens, any applicable waiting period(s) will be waived.

**Important:** Nonresidents may not apply for CWMU permits in the drawing. They can, however, obtain a permit voucher directly from the CWMU landowner or operator.

For more information on the CWMU program—including CWMU hunt season dates, operator names and contact numbers—visit [wildlife.utah.gov/cwmu](http://wildlife.utah.gov/cwmu).

### Explore our maps using the Avenza Maps™ app

Find the perfect spot to catch a Yellowstone cutthroat or get a birds-eye view of Utah's big game hunting units with Utah DWR maps in the Avenza Map Store.

These maps are all available for free on the Avenza app and can be downloaded to your mobile device before heading out into the field—so that you can still use them without internet or cell phone service.

There are a few ways you can access Avenza Maps:

- Download the Avenza Maps app in the App Store or Google Play. Then, find our maps by searching "UDWR" in the Avenza Map Store.
- Turn to the maps beginning on page 40 and click on the map you want to view.

## Gathering shed antlers or horns

Utah Admin. Rule R657-5-21

Utah residents and nonresidents may gather shed antlers or horns—or parts of shed antlers or horns—statewide year-round.

In order to reduce disturbance and stress to big game animals during winter conditions, there are some requirements you should know about before you go shed hunting:

- Anyone gathering sheds between Jan. 1 and May 31 must complete an antler gathering ethics course (find the course at [wildlife.utah.gov/antler-gathering](http://wildlife.utah.gov/antler-gathering)); you must carry proof of course completion on your person (a printed copy or downloaded to your Utah Hunting and Fishing mobile app) when in the field.
- Commercial antler buyers must have a valid certificate of registration.
- The DWR Director has the authority to close shed gathering statewide, which will be triggered by emergency wildlife feeding.

Individuals may modify and resell legally gathered or obtained antlers and horns.

**Important:** The antler-gathering certificate does not authorize you to trespass on closed areas or private lands to collect shed antlers or horns.

Visit [wildlife.utah.gov/antler-gathering](http://wildlife.utah.gov/antler-gathering) for updates and follow us on social media for condition alerts.

### Season dates

Requirement	Dates
Online course completion certificate required*	Jan. 1–May 31

\* You must complete this course every year.

### What if I find antlers or horns attached to a skull?

If you find a skull with the antlers or horns still attached, it's possible the animal was poached.

**Do NOT pick up or move the skull, or disturb footprints or other evidence.**

Instead, please take the following steps:

- Take photos from a couple of angles
- Pinpoint the location of the skull (preferably its GPS coordinates)
- Report your find to a division office
- Provide key details in your report

**Use the app:** Using the DWR Utah Deadhead Reporter app will speed up the required authorization to keep your find. Visit [wildlife.utah.gov/deadhead](http://wildlife.utah.gov/deadhead) for details and app instructions.

The division may send a conservation officer to investigate if the animal was poached. If it's clear that the animal died of natural causes, we may allow you to keep the deadhead.

# PERMIT SALES DATES

In July, various types of big game permits will be available for purchase at all DWR offices, license agent locations ([wildlife.utah.gov/licenses/locator](http://wildlife.utah.gov/licenses/locator)) or online at [wildlife.utah.gov](http://wildlife.utah.gov). See the following table for sales dates.

Permit type	Sales date
General-season archery elk permits	July 7, 2026
Remaining limited-entry big game permits, if available	July 7, 2026
Bison permits for the Nine Mile unit*	July 7, 2026
<b>Youth</b> general-season elk permits (unlimited)	July 7, 2026
Remaining general-season deer permits, if available (also youth archery deer permits)	July 7, 2026
General-season any bull elk permits	July 9, 2026
General-season spike bull elk permits	July 16, 2026
All antlerless permits, if available	July 28, 2026

\* The availability of this permit varies each season. See the 2026 Utah Big Game Field Regulations Guidebook (available in June) for more details or visit [hunt.utah.gov](http://hunt.utah.gov).

## How many elk permits will be available in 2026?

Through the approved statewide elk plan, 2026 general-season elk permit numbers are as follows:

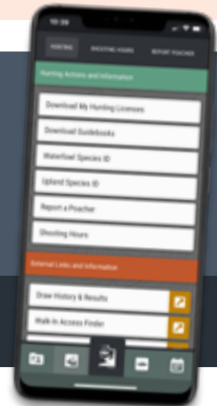
- 15,000 general-season permits for the any bull early season any-legal-weapon and muzzleloader hunts (combined quota)
- No cap on permit numbers for the any bull late season any-legal-weapon hunt
- 15,000 spike bull permits, with a cap of up to 4,500 available as multiseason permits
- Unlimited youth general-season elk permits (these permits will not count toward the above permit numbers)

UTAH DIVISION OF WILDLIFE RESOURCES

# HUNTING & FISHING MOBILE APP

Keep regulations, licenses, season dates and other important resources at your fingertips!

The app is **FREE** for both iOS and Android devices. Learn more at [wildlife.utah.gov/mobileapp](http://wildlife.utah.gov/mobileapp).



# LICENSE, PERMIT AND PROGRAM FEES

Your purchases of hunting and fishing licenses and permits help fund wildlife conservation efforts throughout the state. Thank you for choosing to hunt, trap and fish here in Utah.

## License fees

For a complete list of Utah’s license and permit fees, visit [wildlife.utah.gov/licenses/fees](http://wildlife.utah.gov/licenses/fees). A 2.2% transaction fee applies to all online and in-person credit/debit card transactions.

License	Age	Resident	Nonresident
365-day hunting license	13 and under	\$11	\$44
	14–17	\$16	\$44
	18–64	\$40	\$144
	65+	\$31	\$144
365-day hunting license for disabled veterans (see the box on page 17 for details)	n/a	\$25.50	n/a
Multi-year hunting license (up to five years)	18-64	\$39 / year	\$143 / year
365-day combination* license	17 and under	\$20	\$58
	18–64	\$44	\$190
	65+	\$35	\$190
365-day combination* license for disabled veterans (see the box on page 16 for details)	n/a	\$28.50	n/a
Multi-year combination* license (up to five years)	18-64	\$43 / year	\$189 / year

\*A combination license allows you to hunt or fish in Utah.

## Nonresident fee increase

In the 2025 session, the Utah Legislature authorized higher nonresident fees to help fund wildlife conservation and habitat improvement. These nonresident fee increases began July 1, 2025 for hunting, fishing and combination licenses, and Sept. 1, 2025 for hunting permits and application fees.

Don't lose your hunting and fishing privileges

**Wildlife crimes are serious.** As a hunter or angler in Utah, it is your responsibility to know the laws and abide by them. Wildlife violations may result in fines, jail time, confiscation of equipment and the loss of hunting and fishing privileges.



Learn more at [wildlife.utah.gov/know-consequences](http://wildlife.utah.gov/know-consequences)

## Permit fees

Please keep in mind that if you participate in the hunt drawing, you will also be charged a nonrefundable application fee (plus 2.2% transaction fee) for each species or bonus point you apply for. The application fee is \$10 for residents and \$21 for nonresidents. You will not be charged a permit fee unless you draw a permit.

To see a full list of Utah's license and permit fees, visit [wildlife.utah.gov/licenses/fees](http://wildlife.utah.gov/licenses/fees).

### Deer permit fees

Permit	Resident	Nonresident
General deer	\$46	\$599
Youth general deer	\$40	\$499
Limited-entry	\$94	\$1,070
Multiseason limited-entry	\$170	\$2,130
Premium limited-entry	\$185	\$1,398
Multiseason premium limited-entry	\$336	\$2,330
Management and cactus buck deer	\$94	\$1,070
CWMU	\$94	\$1,070
CWMU management and cactus buck deer	\$94	\$1,070
Premium CWMU	\$185	\$1,398

### Elk permit fees

Permit	Resident	Nonresident
General any bull or spike bull	\$56	\$849
Multiseason general spike bull	\$200	\$1,255
Draw-only youth any bull/hunter's choice	\$50	\$749
Youth general elk	\$50	\$749
Limited-entry	\$314	\$1,950
Multiseason limited-entry	\$564	\$2,655
CWMU	\$314	\$1,950

### Pronghorn permit fees

Permit	Resident	Nonresident
Limited-entry	\$63	\$571
CWMU	\$63	\$571

## Moose permit fees

Permit	Resident	Nonresident
Bull moose	\$454	\$3,488
CWMU	\$454	\$3,488

## Bison permit fees

Permit	Resident	Nonresident
Bison (not on Antelope Island)	\$460	\$4,840
Bison on Antelope Island	\$1,221	n/a

## Bighorn sheep permit fees

Permit	Resident	Nonresident
Desert bighorn	\$564	\$3,988
Rocky Mountain bighorn	\$564	\$3,988

## Mountain goat permit fees

Permit	Resident	Nonresident
Mountain goat	\$454	\$3,488

## Dedicated Hunter Program fees

Participant age	Resident	Nonresident	Lifetime license holder
Adult (18 and older)	\$215	\$1,248	\$86
Youth (12-17 years old)	\$120	\$915	n/a

### Points options for active, deployed military personnel

If you are an active, deployed member of the military, you can purchase a bonus or preference point, even if you missed an application period while deployed. The division will also waive the required combination or hunting license fee when you make that point purchase. To qualify for these exemptions, a military member must:

- Be a resident of Utah.
- Be deployed for 90 days or longer outside of Utah on federal orders from military command.

- Not have previously received a bonus or preference point for the species and hunt type in the same year.
  - Otherwise be eligible to receive a bonus or preference point.
  - Pay a \$10 application fee (plus 2.2% transaction fee) per point received.
  - Submit an application for the exemption to DWR no later than Dec. 31 of the qualifying year of being deployed.
- For additional information and the application form, visit [wildlife.utah.gov/military](http://wildlife.utah.gov/military).

# BASIC REQUIREMENTS

Are you planning to hunt big game in Utah this year? Before you apply for a permit, make sure you meet Utah's age, hunter education, license and permit requirements.

## Are you old enough?

*Utah Code § 23A-4-703*

To hunt big game in Utah, you must be at least 12 years old.

If you are at least 11 years old, you can apply for or obtain any big game permits for which you are eligible, including limited-entry and once-in-a-lifetime permits. Any 11-year-olds who apply must be 12 by Dec. 31, 2026.

**Remember, you cannot hunt until you are 12 years old.**

If you're younger than 18, you can apply to participate in the Utah Hunter Mentoring Program. For details on the program, see the information box on page 21 or visit [wildlife.utah.gov/mentoring](http://wildlife.utah.gov/mentoring).

If you're 12 years old or older, you can also participate in the Trial Hunting Program. See page 18 for details, or visit [wildlife.utah.gov/trial](http://wildlife.utah.gov/trial).

## Adults must accompany young hunters

*Utah Code § 23A-4-708*

While hunting big game, a person under 16 years old must be accompanied by their parent, legal guardian or other responsible person who is 21 years of age or older and who has been approved by the parent or guardian.

The division encourages adults to be familiar with hunter education guidelines or to complete the hunter education course before accompanying youth into the field.

While in the field, the youth and the adult must remain close enough for the adult to see and provide verbal assistance to the young hunter. Using electronic devices, such as walkie-talkies or cell phones, does not meet this requirement.

## Discounted licenses for disabled veterans

The division offers discounted hunting and combination licenses to Utah servicemembers who were disabled in the line of duty.

The discounted hunting license is \$25.50, instead of the \$40 full price. Likewise, the discounted combination license is \$28.50, instead of the \$44 full price. Either license is good for 365 days from the day you buy it. Discounted licenses are available online or from all division offices listed on page 2.

To purchase a discounted hunting or combination license, you must be a Utah resident and have a qualifying

service-connected disability of at least 20 percent.

To apply for a license online, please visit [wildlife.utah.gov/disabledvet](http://wildlife.utah.gov/disabledvet) and complete the online form. If you need assistance, please call the nearest division office.

If you choose to visit a division office to purchase your license, simply bring the verification of service-connected disability documentation that the Department of Veterans Affairs issued to you.

You can find additional resources for hunters and anglers with disabilities at [wildlife.utah.gov/disabled-access](http://wildlife.utah.gov/disabled-access).

## Have you passed hunter education?

*Utah Code § 23A-4-1001 & Utah Admin. Rule R657-23*

If you were born after Dec. 31, 1965, you must provide proof that you've passed a hunter education course approved by the division before you can apply for or obtain a hunting license or a big game permit.

The only exception to this law is for individuals who are participating in the division's Trial Hunting Program. You can find details about the program in the information box on page 18 or by visiting [wildlife.utah.gov/trial](http://wildlife.utah.gov/trial).

### Proof of hunter education

You can prove that you've completed hunter education by obtaining a hunter education card (called a "blue card" in Utah) or if you have a verified hunter education number on file with the division. The number is assigned when you complete hunter education and your blue card is issued.

### How to take hunter education

To get started, you should visit [wildlife.utah.gov/huntereducation](http://wildlife.utah.gov/huntereducation). You'll see links to various traditional and online hunter education courses. Follow the instructions on the website to obtain a hunter education registration certificate (required) and to register for a course online.

If you need assistance, please contact your local division office or call 801-538-4727.

When you finish the course, your instructor will verify your course completion in the online hunter education system. At that point, you will be able to apply for or obtain permits in the division's hunt drawing, and your hunter education registration certificate will become your hunting license.

Approximately four to six weeks after you complete the course, you will receive your blue card by mail.

You should also keep the following in mind:

- Hunters under the age of 16 must be accompanied by an adult while hunting.
- Regardless of when a student graduates, all hunting regulations (such as season dates and bag limits) will apply.
- Hunters who are planning to hunt out of state should allow enough time for their hunter education card to arrive in the mail.

### Utah's Trial Hunting Program

*Utah Admin. Rule R657-68*

Have you ever wanted to bring your spouse, child or friend along on a hunt and give them a chance to try hunting? Now, they can join you on your next big game hunt.

Utah's Trial Hunting Program allows participants to try hunting for three years—while accompanied by a licensed hunter over the age of 21—before taking

a Hunter Education course. (Youth must be at least 12 years old to hunt big game.)

The program applies to hunts for many different species, including all general-season big game hunts. (**Important:** Limited-entry and once-in-a-lifetime hunts are excluded from participation in this program.) To sign up for Utah's Trial Hunting Program or to learn more about it, visit [wildlife.utah.gov/trial](http://wildlife.utah.gov/trial).

## New to Utah?

If you become a Utah resident—and you’ve completed an approved hunter education course in another state, province or country—you must transfer your certification to the DWR. (See the definition of *Resident* on page 80.)

This proof of education certification transfer must occur before you can buy a resident hunting or combination license, or be eligible to apply for any resident hunting permit. You can provide proof that you’ve completed a nationally recognized hunter education course by submitting the online form at [wildlife.utah.gov/hunter-ed-transfer](http://wildlife.utah.gov/hunter-ed-transfer), or visit any DWR office for assistance (see locations and hours on page 2).

## Do you have a license?

*Utah Code §§ 23A-4-201, 23A-4-703 and 23A-5-309*

You must have a current Utah hunting or combination (hunting and fishing) license before you can apply for any big game permits, bonus points or preference points. Licenses are available at [wildlife.utah.gov](http://wildlife.utah.gov) and from license agents and division offices.

Be sure to take a look at the date on your license before you apply for any permits or points. As long as your license is valid on the date you submit your application, you don’t have to purchase a new license for the actual hunt.

For example, assume that your license expires on June 21, 2026. If you apply before that date, you do not have to purchase a new license for your hunt in the fall. All hunting and combination licenses are valid for 365 days from the date of purchase.

## Do you have a permit?

*Utah Admin. Rule R657-62-18*

To participate in any of Utah’s big game hunts, you need to obtain a hunting permit. See page 20 to learn about the types of permits available in 2026.

Utah issues most of its big game permits through the big game hunt drawing. To apply for this drawing, visit [utahdraws.com](http://utahdraws.com) between March 19 and April 23, 2026. For additional details and important dates, see *Apply for big game permits* on page 31.

**Important:** Before you go into the field, review your permit and sign it. A permit must bear your signature to be valid.

## Carry your permit

If you are successful in obtaining a big game permit, you must have it on your person while hunting. You cannot alter your license or permit, nor can you sell, transfer or loan either of them to another person.

# PREPARE TO APPLY

Utah Admin. Rule R657-62-18

To participate in Utah's big game hunts, you need to obtain hunting permits. The division distributes most of those permits through the big game hunt drawing. You can apply for the drawing from March 19–April 23, 2026. It will be easier to apply if you are thoroughly prepared before you begin the application process.

## Hunt options and residency restrictions

Utah Code § 23A-1-101

Before you apply for any big game hunts, it is important to understand your hunt options. Below is a table listing all of the species that will be available in the 2026 Big Game Application. **Important:** there are specific restrictions for Utah residents and non-residents that may determine which species you can apply for. If applying as a resident, you must be a resident as of the day you submit your applications. See the info box below for more details, and see the definition of *Resident* on page 80.

### Residency restrictions for the big game application

Not all hunts may be available for nonresidents; resident-only hunts are listed in [blue text](#) in the hunt tables. If you are successful in obtaining a nonresident big game permit, it will also act as a 1-year nonresident fishing license.

- If eligible, residents may apply for **one** species from each hunt type listed below.
- If eligible, nonresidents may apply for all limited-entry\* and once-in-a-lifetime species, in addition to **one** general-season species.
- All applicants, regardless of residency, may only draw one limited-entry or once-in-a-lifetime species per year, in addition to **one** general-season species.
- You may **not** obtain more than one buck deer or bull elk permit per year. If you are successful in drawing for limited-entry buck deer, you will not be included in the draw for general-season buck deer (but will receive a preference point instead).

Hunt type	Species or program	Hunt tables
Limited-entry	Buck deer, CWMU buck deer	Page 49 and 69
	Bull elk, CWMU bull elk	Page 54 and 74
	Buck pronghorn, CWMU buck pronghorn	Page 61 and 77
Once-in-a-lifetime	Bull moose, CWMU bull moose	Page 64 and 78
	Bison	Page 65
	Desert bighorn sheep	Page 66
	Rocky Mountain bighorn sheep	Page 67
	Mountain goat	Page 68
General-season	Buck deer	Page 43
	Dedicated Hunter Program	Page 47
Draw-only youth elk*	Draw-only youth any bull/hunter's choice elk	Page 54

\*See details about this youth-only hunt on page 39.

## Research your options

It's important to nail down the details before applying for a hunt. You don't want to accidentally apply for the wrong hunting unit or season. We've provided information in this guidebook and links to online tools that can help you research your options.

### Review the hunt tables

All of the big game hunts you can apply for are listed in the tables that begin on page 43. You will need to use the hunt numbers associated with the hunts in order to apply for permits. Please keep in mind that hunt names and boundaries may change from year to year.

### See maps and boundaries online

You'll find detailed maps and boundary descriptions for all big game hunts at [hunt.utah.gov](http://hunt.utah.gov).

### Research hunts on the Utah Hunt Planner

There's a useful online tool that can help you plan a successful, enjoyable hunt. The Utah Hunt Planner is located at [hunt.utah.gov](http://hunt.utah.gov).

During the application period (March 19–April 23), you can research hunts on the Utah Hunt Planner. If you obtain a big game permit in 2026, this is a tool that can help you have a great experience during your hunt.

### Check proposed permit numbers

Hunters can access proposed permit numbers for each hunt unit beginning in April. This information will be available on the Utah Hunt Planner at [hunt.utah.gov](http://hunt.utah.gov).

The Utah Wildlife Board will approve final permit numbers on April 30, 2026.

### Obtain permission to hunt private property

The division cannot guarantee access to private land, and the agency does not have the names of landowners who own property where hunts occur.

You must obtain documented permission from the landowner or the landowner's authorized representative before hunting or trapping on private lands. Ideally, you should have permission **before** you apply for a permit.

You can download a landowner permission card at [wildlife.utah.gov/permission](http://wildlife.utah.gov/permission).

### Hunter Mentoring Program

The Utah Hunter Mentoring Program allows any qualifying adult to share their hunting permits with youth (ages 12–17).

Permits that are eligible for sharing under the Hunter Mentoring Program include all big game permits as well as black bear, turkey, greater sage-grouse and sharp-tailed grouse permits. Only tundra swan and sandhill crane permits may not be shared because they are subject to conflicting federal regulations.

To learn more about program eligibility and requirements and to download the application form, visit [wildlife.utah.gov/mentoring](http://wildlife.utah.gov/mentoring).

## Understand the drawing order

*Utah Admin. Rule R657-62-18*

A better understanding of the drawing order may affect which permits you decide to apply for. Big game permits are drawn in the following order:

- **First**—Buck deer (all limited-entry permits)
- **Second**—Bull elk (all limited-entry permits)
- **Third**—Buck pronghorn (all limited-entry permits)
- **Fourth**—Once-in-a-lifetime permits
- **Fifth**—General buck deer (Lifetime License holders)
- **Sixth**—General buck deer (Dedicated Hunters)
- **Seventh**—General buck deer (youth)
- **Eighth**—General buck deer
- **Last**—Draw-only youth any bull/hunter’s choice elk

Because you may only draw one limited-entry or once-in-a-lifetime permit per year, if you are successful in drawing any limited-entry permit, you will not be included in draw for a once-in-a-lifetime permit (but you will receive a bonus point instead).

The definition of a limited-entry permit is listed on page 80. For more information about the permit drawing order, please visit [wildlife.utah.gov/drawings](http://wildlife.utah.gov/drawings).

## Know how to apply as a group

*Utah Admin. Rule R657-62-7 and R657-62-18*

If you want to apply with your friends and family as a group, there are some important things to consider before selecting your hunt choices.

Both residents and nonresidents can apply together. However, if you’re a Utah resident and you decide to apply with a nonresident, make sure nonresident permits are available for each hunt your group is applying for. If nonresident permits are not available for a hunt your group is applying for, the nonresident and everyone else in the group—including the Utah residents—will not be allowed to draw for that hunt unit.

Up to **four hunters**—including a mix of residents and nonresidents—can apply together for available general-season deer, limited-entry deer, elk or pronghorn permits by using a group code or by using the new “Select in Cart” option. Group applications are not accepted for once-in-a-lifetime hunts.

Visit [wildlife.utah.gov/group-applications](http://wildlife.utah.gov/group-applications) for more information about using a group code or the new “Select in Cart” option in the big game application.

**Applying as a youth-only group:** Up to four youth can apply together in a youth-only group. **Important:** If you’re a youth and you want an opportunity to draw one of the permits reserved for youth, **do not** apply in a group with an adult. Visit [wildlife.utah.gov/group-applications](http://wildlife.utah.gov/group-applications) for details.

## Why bonus points matter

*Utah Admin. Rule R657-62-8*

Utah's bonus point system has been put in place to increase your chance of drawing a big game permit. Knowing more about the points system may be helpful during the application process.

Every time you apply for a limited-entry permit or once-in-a-lifetime permit, but you don't draw one, you receive a bonus point for that species.

Applying for a general-season buck deer permit will not affect your ability to obtain a bonus point for limited-entry deer. If you draw a general-season buck deer permit, you'll still receive a bonus point if you are unsuccessful in drawing a limited-entry buck deer permit.

### Applying for a bonus point

Even if you're not going to hunt in 2026, you can still receive a bonus point by applying for one. To apply for a bonus point, select the appropriate bonus point code on your application and pay the application fee, which is \$10 for residents and \$21 for nonresidents. The 2026 bonus point application period is March 19–April 23, or you may apply during the June 9–23 antlerless application period.

Because you apply for bonus points by species, instead of by hunt, you may apply for a bonus point even if a particular hunt isn't being offered in 2026.

To apply for a bonus point, you must be eligible for the hunt the bonus point will be awarded for. For example, if you're eligible for a limited-entry buck deer permit, you're eligible to apply for a limited-entry buck deer bonus point.

### Residents

If you're a resident, you may apply for one of the following:

- One limited-entry permit and one once-in-a-lifetime permit
- One limited-entry permit and one once-in-a-lifetime bonus point
- One limited-entry bonus point and one once-in-a-lifetime permit
- One limited-entry bonus point and one once-in-a-lifetime bonus point

You may **not** apply for the following:

- A permit and a bonus point for the same species
- More than one limited-entry bonus point
- More than one once-in-a-lifetime bonus point

### Nonresidents

If you're a nonresident, you may apply for permits or bonus points for all limited-entry and once-in-a-lifetime species. However, you may not apply for a permit and a bonus point for the same species.

Please remember that you may draw only one limited-entry or once-in-a-lifetime permit each year.

### How bonus points work

For detailed information on how your bonus points work in the drawing, visit [wildlife.utah.gov/points](http://wildlife.utah.gov/points).

## Why preference points matter

*Utah Admin. Rule R657-62-9*

Utah's preference point system gives hunters who don't draw a general-season buck deer permit a better chance at drawing one the following year.

Each time you apply for a general-season buck deer permit and don't draw one, you'll receive a preference point. Please keep in mind that preference points are given for a species—deer, in this case—and not for a particular hunting unit.

### Applying for a preference point

Even if you won't be hunting general-season buck deer in 2026, you can still apply for a preference point by selecting code GDR on your application and paying the application fee. The application fee is \$10 for residents and \$21 for nonresidents. The 2026 application period is March 19–April 23, or you may apply during the June 9–23 antlerless application period.

If you draw a general-season deer permit, you will lose your preference points and not receive an additional preference point.

**Reminder:** If you purchase a general-season buck deer permit that remains available after the drawing, you will lose any preference points you have for general-season buck deer.

### How preference points work in the drawing

For detailed information on how your preference points work in the drawing, visit [wildlife.utah.gov/points](http://wildlife.utah.gov/points).

## Are you eligible to apply?

Before you submit your application, make sure that you are eligible to participate in the big game drawing.

### You may not apply if...

You may not apply for a hunting permit, a bonus point or a preference point if any of the following conditions apply:

- Your big game hunting privilege has been suspended.
- You're under a waiting period for the species you want to apply for.
- You've already obtained a permit for the once-in-a-lifetime species you want to apply for.
- You drew any type of big game or antlerless permit in 2025, but you didn't submit a harvest report or pay the late fee (if applicable).
- You don't have a hunting or combination license.

Additionally, if you are a CWMU landowner association member or a spouse or dependent child, you cannot apply for your own CWMU permits in the big game drawing.

### Waiting periods

Waiting periods keep successful applicants out of the drawing for a few years and give other hunters a better chance at drawing a permit.

## Limited-entry buck deer, buck pronghorn and bull elk permits

*Utah Admin. Rule R657-62-18*

The waiting period for limited-entry buck deer is five years.

The bull elk waiting period is five years.

The waiting period for buck pronghorn is two years.

Waiting periods do not apply to general-season permits.

**Note:** A youth may draw only one draw-only youth elk permit during their years as a youth.

## Once-in-a-lifetime permits

*Utah Admin. Rule R657-62-18*

Bull moose, bison, Rocky Mountain bighorn sheep, desert bighorn sheep and mountain goat permits are once-in-a-lifetime permits. If you obtain a once-in-a-lifetime permit for a particular species, such as a bull moose, you may not apply for that permit again in the drawing.

You can still apply for other once-in-a-lifetime species that you haven't drawn a permit for.

Also, if you've been convicted of unlawfully taking a once-in-a-lifetime species, you may never apply for or obtain a permit for that species again.

## Permits obtained after the drawing

*Utah Admin. Rule R657-62-15*

If you're under a waiting period for a certain species, you can still obtain any permit that remains for that species after the drawing, but your waiting period will start all over again.

For example, if you have two years left on your bull elk waiting period, and you buy a limited-entry bull elk permit that remains available after the drawing, you'll begin a new five-year waiting period that will prevent you from applying for a limited-entry bull elk permit for the next five years.

If you're not already under a waiting period—and you obtain a limited-entry or once-in-a-lifetime permit that remains available after the drawing—you will lose your bonus points for that species and incur a waiting period.

## Private CWMU, conservation, expo and landowner permits

*Utah Admin. Rule R657-62-18*

If you obtain a CWMU, conservation, expo or landowner permit from a private individual or organization—for deer, elk or pronghorn—you won't be subject to a waiting period.

If you obtain a once-in-a-lifetime permit in the expo drawing or from a conservation organization, you may not apply for that species in any other public drawing.

Protect wildlife by reporting suspected wildlife crimes

**CALL** 800-662-3337  
**TEXT** 847411  
**APP** UTDWR

Download on the App Store | GET IT ON Google Play

Learn more or report online at [wildlife.utah.gov/utip](http://wildlife.utah.gov/utip)

UTIP  
UTAH TURN IN A POACHER

The rules regarding CWMU and once-in-a-lifetime permits are as follows:

- If you have obtained a once-in-a-lifetime permit in the public drawing in the past, you may buy a once-in-a-lifetime permit from a landowner or a CWMU operator.
- If you have not obtained a once-in-a-lifetime permit in the public drawing—and you buy a once-in-a-lifetime permit from a landowner or a CWMU operator—you may not obtain a permit in the public drawing for that species in the future.

Keep in mind that whether you draw or purchase a permit, you may not obtain more than one of each of the following permits during the 2026 big game season:

- Buck deer permit
- Bull elk permit
- Buck pronghorn permit

For example, if you draw a general-season buck deer permit—and then decide you want to hunt on a CWMU instead—you must surrender your general-season permit before the opening day of the season listed on your permit and before redeeming the private CWMU voucher for a permit.

**Reminder:** If you choose to surrender any big game permit (in order to purchase/obtain a private permit not offered through the drawing), be sure to do so at least 30 days before your hunt begins in order to keep the preference or bonus points that helped you draw the original permit. You will not earn a point for the current year.

**If you surrender a big game permit less than 30 days before the season opens, you will lose all of your previously accrued bonus or preference points for that species, and you will not earn a point for the current year.**

As long as you surrender a big game permit before the season opens, any applicable waiting period(s) will be waived.

## Multiseason hunts for deer and elk

*Utah Admin Rules R657-5-26 and R657-5-32*

Utah offers some multiseason hunts for buck deer or bull elk on select limited-entry or premium limited-entry units during multiple seasons listed in the hunt tables of this guidebook. Those tables begin on page 43. Permits for those hunts are available through the big game drawing application.

**Note:** A hunter with a general multi-season spike bull elk permit may still participate in both the spike and any bull hunts during the archery general season.

See page 13 for more information about all elk permit sales dates. Visit [wildlife.utah.gov](http://wildlife.utah.gov) in early June to see purchase times and locations.

For detailed information about the multiseason spike elk hunts, see the *2026 Utah Big Game Field Regulations Guidebook* in June 2026.

**Important:** Please keep in mind that when you hunt multiple seasons, you must use the appropriate weapon type for the season.

## Mandatory reporting

Reporting your hunt information is important—and required—even if you didn't harvest an animal. You must report your hunt information for any type of limited-entry, general-season, antlerless or once-in-a-lifetime hunt within 30 days of the end of the hunt, or for hunts ending Jan. 16 or later, by Feb. 15.

If you didn't meet this reporting requirement in 2025, you won't be allowed to apply in the 2026 big game or antlerless application, or for bonus or preference points; however, you can restore your eligibility by submitting your harvest report and paying a \$50 late fee.

See the information box on page 30 for additional details on mandatory reporting requirements.

## Hunts with special circumstances

Most of the permits you can draw through the big game hunt drawing are pretty self-explanatory. There are a few hunts, however, that require additional explanation.

### Management buck deer hunt

*Utah Admin. Rule R657-5-45*

A “management buck” is a buck deer with three points or less on at least one antler, above and including the first fork, but not including the eye guard. The eye guard does not count as a point. A point is a projection that's longer than one inch, measured from its base to its tip, including damaged or broken antlers.

Management buck deer permits are available through the Utah big game drawing.

**Important:** If you obtain a management buck deer permit, that is the **only** buck deer permit you may obtain for the 2026 season. You will lose your bonus points and incur a waiting period of **five** years.

### Why a management buck deer hunt?

Removing excess bucks—while protecting the larger bucks in the herds—is the goal of the management buck deer hunt.

The Paunsaugunt unit has high buck-to-doe ratios. Harvesting smaller-antlered bucks will preserve trophy-class bucks and provide more room for does. Having more does in the herds will result in more fawns being born. Having more fawns will help ensure that these herds remain strong and healthy into the future.

### Cactus buck hunts

*Utah Admin. Rule R657-5-46*

You can also apply for a permit to hunt a cactus buck on the Paunsaugunt unit or the Alton CWMU. These bucks often have unique antler growth that many hunters find fascinating.

A cactus buck is one that still has velvet covering at least 50 percent of its antlers during the season dates set by the Wildlife Board. For season dates, see the hunt table on page 50.

**Important:** If you obtain a cactus buck deer permit, that is the **only** buck deer permit you may obtain for the 2026 season. You will lose your bonus points and incur a waiting period of **five** years.

## HAMSS buck deer hunts

*Utah Admin. Rule R657-5-47*

For 2026, the Utah Wildlife Board approved four handgun-archery-muzzleloader-shotgun-straight walled rifle-only (HAMSS) hunts for buck deer. These hunts are considered limited-entry hunts. The hunts will take place in the following units:

- Book Cliffs, Floy Canyon
- East Canyon
- Kaiparowits HAMSS
- San Juan, Mancos Mesa

**Note:** On all HAMSS hunts, no weapon-mounted optics are allowed. The complete weapon specifications for these hunts are currently listed online in *Utah Admin. Rule R657-5-47* and will also be included in the *2026 Big Game Field Regulations Guidebook*, available in June.

For specific season dates, see the hunt tables on page 61.

**Important:** If you are successful in obtaining a permit for one of these hunts, you will lose your bonus points and incur a waiting period of **five** years.

## HAMSS bull elk hunts

*Utah Admin. Rule R657-5-47*

For 2026, the Utah Wildlife Board approved handgun-archery-muzzleloader-shotgun-straight walled rifle-only (HAMSS) hunts on these five limited-entry elk units:

- Barney Top/Kaiparowits
- Cache, North
- East Canyon
- Southwest Desert, North
- West Desert, Deep Creek

**Note:** On all HAMSS hunts, no weapon-mounted optics are allowed. The complete weapon specifications for these hunts are currently listed online in *Utah Admin. Rule R657-5-47* and will also be included in the *2026 Big Game Field Regulations Guidebook*, available in June 2026.

For specific season dates, see the hunt tables on page 61.

**Important:** If you are successful in obtaining a permit for one of these hunts, you will lose your bonus points and incur a waiting period of **five** years.

## Obtain up to three elk permits

*Utah Admin. Rule R657-5-33*

In Utah, a hunter can obtain up to three elk permits each year:

- A maximum of one permit can be for a bull elk.
- A maximum of one antlerless elk permit can be obtained through the antlerless hunt drawing.
- A maximum of two antlerless elk permits can be obtained over the counter.

Even though you cannot obtain antlerless elk permits until the summer of 2026, knowing about this opportunity may affect which permits you apply for in the big game drawing.

**Important:** Antlerless elk permits may be used **only** during the season dates printed on your permit.

## Restricted weapons hunts

Utah Admin. Rule R657-5-48

As part of the mule deer management plan approved by the Utah Wildlife Board, four mule deer units are part of a research study evaluating weapons technology restrictions. Restrictions do not apply to limited-entry late muzzleloader hunts, but do apply for those with Dedicated Hunter permits.

The following units have restricted weapons hunts (seasons with technology restrictions are in parentheses):

- Beaver, West (general-season muzzleloader, rifle)
- Boulder/Kaiparowits (general-season muzzleloader, rifle)
- Cache (general-season muzzleloader, rifle)
- Thousand Lakes (limited-entry archery, muzzleloader, rifle)

In addition to all equipment and weapons requirements for big game hunting in Utah, the specific restrictions are summarized in this table:

Weapon type	Restrictions
Restricted archery equipment	<ul style="list-style-type: none"><li>• Must be a single-stringed longbow or recurve bow with no cables, pulleys or cams</li><li>• Has no sights</li><li>• Has a draw weight of 40 pounds or more</li></ul>
Restricted muzzleloader equipment	<ul style="list-style-type: none"><li>• The ignition system is limited to traditional flintlock, wheellock, matchlock, musket cap or percussion cap (all other ignition systems, including 209 primers, are prohibited)</li><li>• Contains only open sights or peep sights</li></ul>
Restricted rifle equipment	<ul style="list-style-type: none"><li>• Contains only open sights or peep sights</li><li>• Cannot be semiautomatic</li></ul>

See Utah Admin. Rule 657-5-48 for details.

## Plan on sharing the mountain

As much as you'd like to have Utah's backcountry to yourself, you share it with campers, hikers, photographers and other hunters. Some of those hunters are after big game—just like you—while others are pursuing black bear, forest grouse and other species.

Everyone shares the landscape, so please be patient and considerate when encountering others on public land.



# Harvest reports are required for all big game and antlerless hunts.

LEARN MORE AT [WILDLIFE.UTAH.GOV](https://wildlife.utah.gov)

## Mandatory reporting requirements

Reporting your harvest helps the DWR maintain more comprehensive and quality harvest data year-to-year.

Harvest surveys have been required for all limited-entry big game hunts in Utah for over two decades, for all antlerless hunts since 2023, and general-season buck deer and bull elk hunts since 2024. You are required to report your harvest for all big game and antlerless permits **within 30 days after your hunting season ends—or, for hunts ending Jan. 16 or later, by Feb. 15—even if you did not harvest an animal.**

**Remember:** If you are hunting the extended archery seasons for **general-season** buck deer or bull elk, you have up to 30 days after the extended archery hunt closes to report your harvest. **This deadline exception does not apply to limited-entry archery hunts.**

### How do I complete my harvest survey?

It only takes a few minutes to complete a harvest report. To report your harvest, call any regional office or visit [wildlife.utah.gov/harvest](https://wildlife.utah.gov/harvest).

### What if I don't complete my harvest survey by the deadline?

If you don't meet this reporting requirement, you won't be allowed to apply in the following year's big game or antlerless application, or for bonus or preference points. However, you can restore your eligibility to apply for a permit by submitting your harvest report and paying a \$50 late fee.

For more information about harvest reporting requirements, restrictions and fines visit [wildlife.utah.gov/harvest](https://wildlife.utah.gov/harvest).

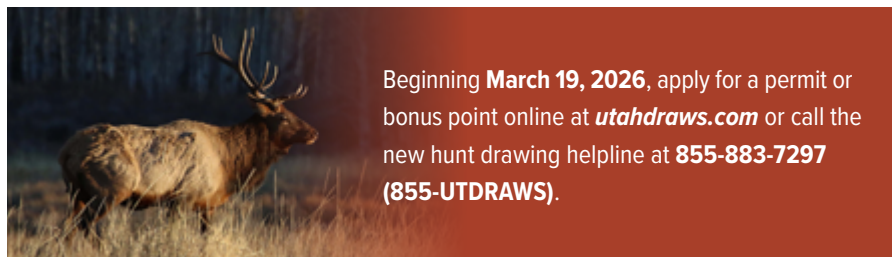
---

**Thank you** for providing better insights into Utah's big game populations statewide by reporting your harvest.

# APPLY FOR BIG GAME PERMITS

Utah Admin. Rule R657-62-18

To participate in any of Utah's big game hunts, you need a hunting permit. Your first, and possibly only, chance to obtain one of these permits is through the state's big game drawing. You will avoid unnecessary stress if you plan ahead and apply for the drawing before the last day of the application period.



Beginning **March 19, 2026**, apply for a permit or bonus point online at [utahdraws.com](http://utahdraws.com) or call the new hunt drawing helpline at **855-883-7297 (855-UTDRAWS)**.

## BIG GAME APPLICATION BEGINS

**MARCH 19, 8 A.M. MDT**

Application fees (per species):  
Resident: \$10 • Nonresident: \$21



## BIG GAME APPLICATION ENDS

**APRIL 23, 11 P.M. MDT**

Deadline to withdraw or edit your application



## DRAWING RESULTS AVAILABLE

**MAY 31**



**2<sup>ND</sup> CHANCE TO APPLY FOR BIG GAME BONUS/PREFERENCE POINTS**

**JUNE 9-23**

During the antlerless application period



**BIG GAME PERMITS MAILED**

**EARLY JULY**

## What to know about applying:

- You must have a valid hunting or combination license to apply. If needed, you can buy a license at the same time you submit your application.
- You must be a Utah resident at the time of application to apply as a resident (see page 80 for the definition).
- Edit your application at no charge anytime during the application period by visiting [utahdraws.com](http://utahdraws.com) and clicking the *View/Edit/Withdraw* button.
- Credit or debit cards must be valid through June 2026 (the division is not responsible for any bank charges incurred for the use of credit/debit cards).
- For application help, call the hunt drawing helpline at 855-883-7297. You can also call any division office before 5 p.m. MDT on April 23.
- View drawing results at [utahdraws.com](http://utahdraws.com).

# PURCHASE OVER-THE-COUNTER PERMITS

Utah Admin. Rule R657-62-18

Any permits remaining after the big game drawing—and all general-season elk permits—are available on different days throughout July. There are also a few other options for permits sold over the counter which you can take advantage of.



By the end of May, you can find a full list of available permits at [wildlife.utah.gov/remaining-permits](https://wildlife.utah.gov/remaining-permits). Purchase permits online at [wildlife.utah.gov](https://wildlife.utah.gov) or in person at any DWR office or license agent.

## OVER-THE-COUNTER SALES DATES:

### JULY 7

- General-season archery elk permits
- Youth general-season elk permits
- Remaining limited-entry big game permits (if available)
- Remaining general-season buck deer permits (if available)
- Youth archery general-season buck deer permits
- Bison permits for the Nine Mile unit

### JULY 9

- General-season any bull elk permits
- General-season private-lands-only any bull elk permits (Uinta Basin)

### JULY 16

- General-season spike bull elk permits
- Multiseason spike bull elk permits

### JULY 28

- Remaining antlerless permits (if available)
- Antlerless elk control permits
- Private-lands-only antlerless elk permits

## What to know about purchasing these over-the-counter permits:

- Permits go on sale at 8 a.m. MDT.
- You must have a valid hunting or combination license to purchase a permit.
- Permits are sold on a first-come, first-served basis.

## Important reminders:

- If you purchase a remaining permit from the hunt drawing, you will lose your bonus/preference points.
  - This includes remaining general-season buck deer permits.
  - This excludes youth archery deer permits.
- If you purchase a remaining permit from a draw, you will incur any relevant waiting period.
  - This includes the lifetime waiting period for the Nine Mile Bison permit.

## AFTER YOU APPLY

*Utah Admin. Rule R657-62-18*

After the application period ends, the hunt drawing occurs. We appreciate your patience throughout the drawing process and in awaiting your results.

### Updating your personal information

A lot of things can change while you're waiting to find out if you drew a permit. If you need to update your name (because of marriage or divorce), your address or the credit card number associated with your application, please call 855-883-7297 or visit [utahdraws.com](http://utahdraws.com).

### Obtaining your drawing results

You will receive an email that contains your drawing results on or by May 31, 2026. You can also learn your drawing results by visiting [utahdraws.com](http://utahdraws.com) or by calling 855-883-7297.

To protect applicants' privacy—and to comply with governmental records access laws—you'll receive access to only your own drawing results.

### Obtaining permits

If you draw a permit in the big game drawing, you'll receive your permit in the mail in July.

If your permit requires you to complete an online orientation course, you must first complete the course in order to receive your permit.

**Reminder:** If you obtain a general-season buck deer permit over the counter (after the big game drawing), you will lose any preference points you've previously accrued for buck deer.

Please be aware that if you receive your permit, and then the credit card you used for payment is refused, your permit is not valid. To update the credit card number associated with your application, please call 855-883-7297 or visit [utahdraws.com](http://utahdraws.com).

### Surrendering permits

*Utah Code § 23A-4-207 and Utah Admin. Rule R657-42-4*

What happens if you obtain a permit and then realize you won't be able to use it?

If your season hasn't started, you should consider surrendering the permit. If you surrender early enough, you'll be able to keep your bonus points or preference points and avoid a waiting period.

**Reminder:** If you want to surrender your big game permit, you are strongly encouraged to do so **at least 30 days before the season opens**. The surrender process has changed and could result in the loss of previously accrued bonus or preference points. Learn more below or visit [wildlife.utah.gov/refund](http://wildlife.utah.gov/refund).

## Individuals

### How permit surrender affects bonus and preference points

If you surrender a big game permit at least 30 days before the start of the season, you'll get all of your previously accrued bonus or preference points for that species/permit back, but you will not earn a point for the current year. **Important:** If you surrender a big game permit **less than 30 days before the season opens**, you will lose all of your previously accrued bonus or preference points for that species/permit and you will not earn a point for the current year.

As long as you surrender a big game permit before the season opens, any applicable waiting period(s) will be waived.

## Groups

### How permit surrender affects bonus and preference points

If you obtain a permit through a group application—and then you decide to surrender it—you will not have your bonus or preference points reinstated unless your **entire** group meets the following conditions:

- All group members must surrender their permits.
- Permit surrenders must occur at least 30 days before the start of the season.

**Note:** Even if you meet the above conditions, you will not earn a point for the current year.

**Important:** If some of your group members surrender their permits **less than 30 days** from the season opener, **all** group members will lose **all** of their bonus or preference points.

Members of the group may not surrender their permits individually unless the surrender occurs because of:

- Activation in the military
- An injury/illness that will prevent the individual from hunting
- Death

### How permit surrender affects waiting periods

If members of a group surrender their permits before the season begins, the waiting period will be waived. General-season permits are not subject to waiting periods.

## Dedicated Hunters

If you're enrolled in the Dedicated Hunter Program, and you decide to surrender your permit, you must return it to the division before Aug. 15, 2026 (the day the general-season archery deer hunt opens).

## Private landowner and CWMU permit holders

If you obtain a limited-entry landowner permit or a private CWMU permit, you can surrender it.

Limited-entry private landowner permits must be surrendered before the season the permit was issued for opens.

To surrender a private CWMU permit, there are two options. If possible, you should surrender your CWMU permit before the CWMU season opening dates listed on page 11.

To surrender your permit after the CWMU season has started, but before you hunt, you and the CWMU operator must both sign an affidavit stating that you did not hunt with the permit. Both of the signatures must be notarized.

After the signatures are notarized, submit the affidavit and the unused permit to the division.

## Permit refunds and exchanges

*Utah Code § 23A-4-207 & Utah Admin. Rule R657-42*

The division rarely issues refunds for permits, licenses or certificates of registration, but there are some exceptions. To see if you're eligible for a refund, visit [wildlife.utah.gov/refund](http://wildlife.utah.gov/refund).

**Reminder:** If you are eligible for a refund, you must submit all required forms and accompanying paperwork within 30 days (**new deadline**) of the season ending in order to qualify for a full refund.

## Permit exchanges

You may exchange your general-season deer or elk permit for one that's available in another unit, but it must be for the same species and sex. For example, you cannot exchange a buck deer permit for a bull elk permit. The exchange must occur before the season opening date on the permit you originally obtained.

You must also pay a \$10 handling fee to exchange a permit.

## Duplicate licenses

*Utah Code § 23A-4-208 & Utah Admin. Rule R657-5-5*

If your unexpired license or permit is destroyed, lost or stolen, you can obtain a duplicate from a division office or a license agent for \$10 or half of the price of the original license or permit, whichever is less.

If you drew a license or permit, but you never received it, the division may waive the fee that you would normally have to pay to get a duplicate.

Keep in mind that you can also use the Utah Hunting and Fishing app to legally carry hunting or combination licenses on a phone or tablet for all the members of your family. To download the app, visit [wildlife.utah.gov/mobileapp](http://wildlife.utah.gov/mobileapp).

**Important:** Any original license, permit, tag or certificate of registration becomes invalid when surrendered or forfeited, or when a duplicate or exchanged one is issued.

## Lifetime license holders: Obtaining your permit in 2026

Utah Admin. Rule R657-17

Lifetime licenses were last sold in Utah in 1994. If you are one of the lucky hunters who has a lifetime license, the division wants you to obtain your deer permit as quickly and smoothly as possible:

- To select the unit you want to hunt, you'll need to complete the online lifetime license questionnaire. The questionnaire is located in the 2026 big game application. Visit [utahdraws.com](http://utahdraws.com) between March 19 and April 23, 2026 to access the application, complete the questionnaire and select a unit.
- If you do not complete the lifetime license questionnaire by April 23, 2026, you will automatically receive a permit for the unit you selected in 2025.
- If you did not select a general-season unit in the past three years, and you do not complete your lifetime license questionnaire in 2026, you will not receive your lifetime permit, but may purchase a remaining permit starting July 7.
- If your address changes, please notify the division immediately.
- If you are already enrolled in the Dedicated Hunter Program, you are not required to complete your lifetime license questionnaire.
- If you are planning to apply for the Dedicated Hunter Program in 2026, you must complete your lifetime license questionnaire.

For more information about lifetime licenses, visit [wildlife.utah.gov/lifetime](http://wildlife.utah.gov/lifetime).

# ADVENTURE AWAITS

Don't miss out on Utah's breathtaking views and unforgettable hunts.



Renew or purchase your license today at [wildlife.utah.gov/licenses](http://wildlife.utah.gov/licenses)

# DEDICATED HUNTER PROGRAM

*Utah Admin. Rule R657-38*

Enjoy more hunting opportunities and help Utah wildlife.

Want to spend more time hunting deer in Utah? Consider applying for the Dedicated Hunter Program.

As a participant, you could enjoy up to three consecutive years hunting the same general-season deer unit and help Utah wildlife.

## Benefits and requirements

As a Dedicated Hunter, you'll complete specific requirements in each of the three years you participate to obtain your deer permit.

Then, you'll be able to use your permit to hunt during all of the general deer seasons: archery, muzzleloader and any legal weapon (rifle).

In exchange for this opportunity, participants:

- Complete a wildlife conservation ethics course.
- Complete at least 32 volunteer hours on division-approved service projects during the three-year period.
- May harvest a deer in two of the three years of program participation.

**Remember:** Applicants to the Dedicated Hunter Program are no longer required to complete an orientation course before applying for the program in the big game drawing. Instead, you acknowledge and agree to the program requirements as part of your application, and complete the online orientation course if accepted into the program. Keep in mind that there are minimum annual service requirements during each year you are enrolled.

Please visit [wildlife.utah.gov/dh](http://wildlife.utah.gov/dh) for more information about the program.

## Joining the program

Participants join the Dedicated Hunter Program by applying in the annual big game drawing. Online applications for the Dedicated Hunter Program will be accepted from March 19–April 23, 2026 (as part of the 2026 big game application process). Results of the drawing will be available by May 31, 2026.

The application fee is \$10 for residents and \$21 for nonresidents. If your application is drawn, you will be charged the appropriate program fee. (Dedicated Hunter Program fees are listed on page 15.) You may apply as an individual or in groups of up to four hunters.

**Remember:** Big game applicants may apply for a general-season buck permit/point or a Dedicated Hunter COR/point, but not both.

## Dedicated Hunter preference points

If you apply for the Dedicated Hunter Program in 2026, and you aren't selected to participate, you'll receive a Dedicated Hunter preference point, which will give you a better chance at getting into the program in a future year.

If you don't want to join the program this year—but you'd like a better chance at participating in the future—just apply for a Dedicated Hunter preference point.

For additional details about the program, please visit [wildlife.utah.gov/dh](http://wildlife.utah.gov/dh).

# OPPORTUNITIES FOR YOUNG HUNTERS

In 2026, there are many options for youth who want to hunt big game.

## Hunting deer for multiple seasons

Twenty percent of Utah's general-season buck deer permits are allocated to youth in the big game drawing. For the purposes of big game hunting, you are a youth if you will be 17 years of age or younger on July 31, 2026.

### Any legal weapon permits

If you are a youth who obtains a general-season any legal weapon or restricted rifle permit **(for either the early season or the late season)**, you may hunt during all general seasons for buck deer including archery, extended archery (course required), muzzleloader and any legal weapon seasons (including the early season only if your unit offers it). See the table below for full details on which seasons a youth may hunt with their any legal weapon permit.

### Muzzleloader permits

If you obtain a general-season muzzleloader or restricted muzzleloader deer permit, you may hunt only during the general muzzleloader season. You must use muzzleloader equipment and hunt only the unit and season listed on your permit.

### Archery permits

If you obtain a general-season archery deer permit, you may hunt only during the general archery deer season and the extended archery deer season. On July 7, additional youth-only archery deer permits will be available for purchase over the counter at all DWR offices and license agent locations, or online at [wildlife.utah.gov](http://wildlife.utah.gov).

**Reminder:** Youth who purchase these additional youth archery deer permits will not lose any preference points they've accrued for general-season buck deer.

## Which seasons can I hunt with my youth deer permit?

### Archery permit

- Aug. 15–Sept. 11
- Extended archery areas (see page 9, archery only)
- You may hunt only your unit and season dates listed on your permit with archery equipment or the extended archery seasons

### Muzzleloader permit

- Sept. 23–Oct. 1
- You may hunt only your unit and season dates listed on your permit with muzzleloader equipment

### Early any legal weapon permit

- Aug. 15–Sept. 11 (archery only)
- Sept. 23–Oct. 1 (muzzleloader only)
- Oct. 7–11 (any legal weapon)
- Oct. 18–26 (any legal weapon)
- Extended archery areas (see page 9, archery only)

### Late any legal weapon permit

- Aug. 15–Sept. 11 (archery only)
- Sept. 23–Oct. 1 (muzzleloader only)
- Oct. 7–11 (any legal weapon) **(and only if your unit offers this season)**
- Oct. 17–25 (any legal weapon)
- Extended archery areas (see page 9, archery only)

## General-season youth elk permits (OTC)

In 2026, there will be an unlimited number of general-season youth elk permits available for youth who will be 17 years of age or younger on July 31, 2026. **Remember:** These permits will be valid during all general seasons on both any bull and spike units. Youth hunters must follow spike-only antler point regulations on spike units.

See the table below for full details about which seasons a youth can hunt with their general-season elk permit. These permits will be available for purchase on July 7 over the counter at all DWR offices and license agent locations, or online at [wildlife.utah.gov](http://wildlife.utah.gov).

## Draw-only youth any bull/hunter's choice elk permits

Youth who want to participate in the draw-only youth any bull/hunter's choice elk hunt must apply for permits in the big game hunt drawing. If you draw a permit, you may harvest either a bull elk or an antlerless elk from Sept. 12–22, 2026 in any general-season any bull unit (**excludes limited-entry bull elk units and spike elk units**).

These permits are only valid on general-season any bull elk units and only during the dates listed on the permit. They are not valid on limited-entry elk units or during the general-season youth elk permit dates. See the table below for details.

## Youth-only groups

If you will be 17 years of age or younger on July 31, 2026, you can participate in the youth drawing for general-season deer permits or the draw-only youth elk permits. You can submit an application as an individual hunter or as a member of a youth-only group.

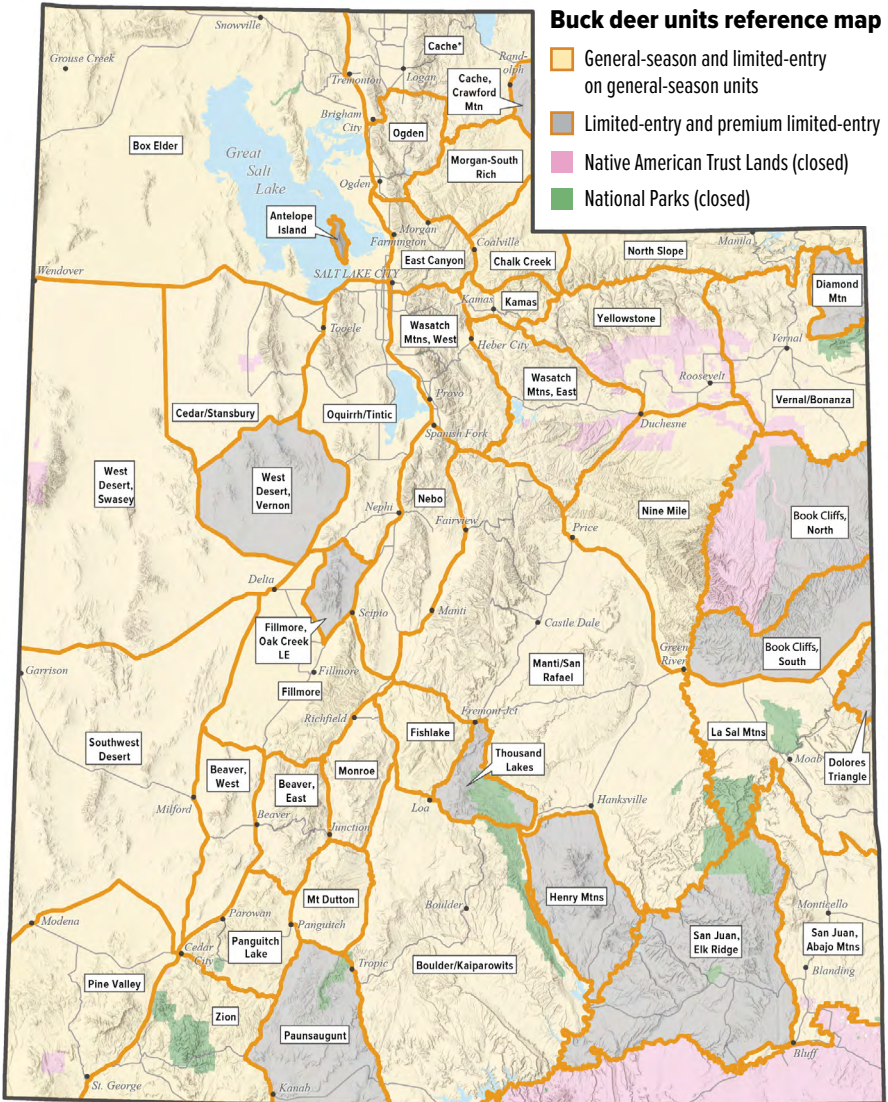
When you apply in a youth-only group for the general-season deer hunt or the draw-only youth elk hunt, all hunters must meet the age requirement or the application will not be processed as a youth application.

Youth permit type	Season	Unit type	Season dates
<b>General-season youth elk permit</b> (over the counter)  <b>NOTE:</b> Youths with this permit <b>may not</b> hunt the Sept. 12–22 hunt listed below.	Archery	Any bull*	Aug. 15–Sept. 16
	Archery	Spike only*	Aug. 15–Sept. 4
	<b>Early</b> any legal weapon	Any bull	Oct. 3–9
	<b>Late</b> any legal weapon	Any bull	Oct. 10–16
	Any legal weapon	Spike only	Oct. 3–15
	Any legal weapon	Uinta Basin private lands only	Aug. 1–Nov. 14
	Muzzleloader	Any bull and spike only	Oct. 28–Nov. 5
	Archery	Extended archery*	See page 8
<b>Draw-only youth any bull / hunter's choice permit</b>	Any legal weapon	Any bull*	Sept. 12–22

\*Hunter's choice: Can take an antlerless elk.

# GENERAL-SEASON BUCK DEER HUNT UNITS

The division does not guarantee access to any private or public land. Unit boundaries may include private property or other excluded areas. Visit [hunt.utah.gov](http://hunt.utah.gov) for detailed boundary descriptions.



\*During the general season, the Cache unit also includes the Cache, Crawford Mtn unit.

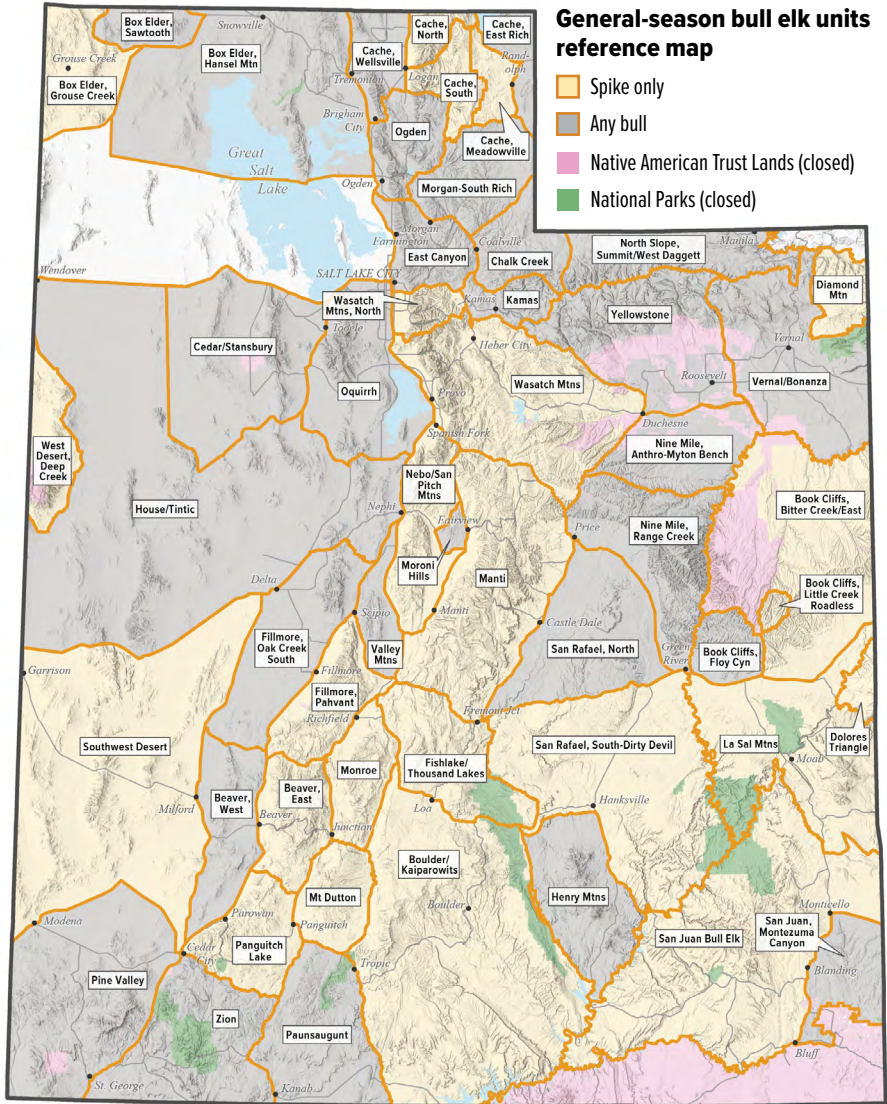
This map is for general reference only. Please visit [hunt.utah.gov](http://hunt.utah.gov) for detailed boundary descriptions. All hunt units **exclude** elk CWMUs, Native American Trust Lands, National Parks and other areas closed to hunting.



AVENZA MAPS® | Explore this map with the AVENZA APP. See page 11 for details.


# GENERAL-SEASON BULL ELK HUNT UNITS

The division does not guarantee access to any private or public land. Unit boundaries may include private property or other excluded areas. Visit [hunt.utah.gov](http://hunt.utah.gov) for detailed boundary descriptions.



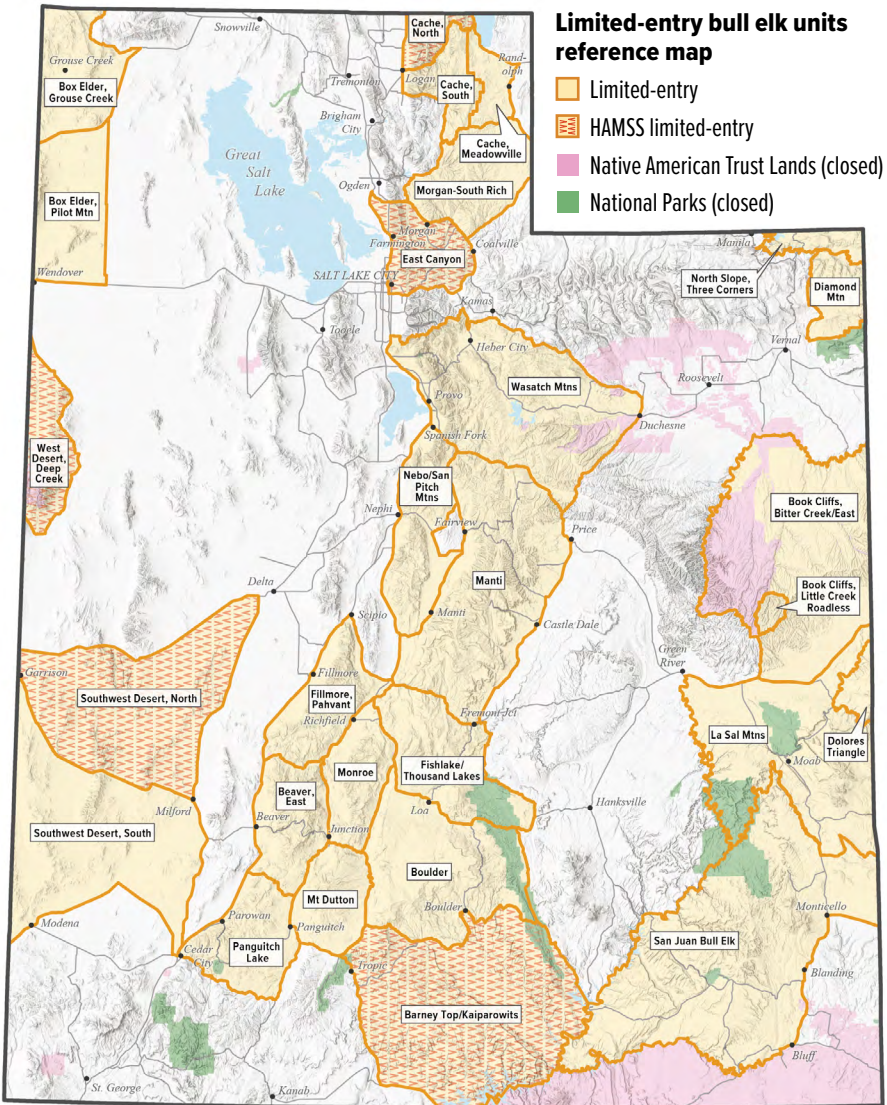
**\*No general-season archery elk hunt on the Paunsaugunt unit.**

This map is for general reference only. Please visit [hunt.utah.gov](http://hunt.utah.gov) for detailed boundary descriptions. All hunt units **exclude** elk CWMUs, Native American Trust Lands, National Parks and other areas closed to hunting.


 AVENZA MAPS® | Explore this map with the AVENZA APP. See page 11 for details.

# LIMITED-ENTRY BULL ELK HUNT UNITS

The division does not guarantee access to any private or public land. Unit boundaries may include private property or other excluded areas. Visit [hunt.utah.gov](http://hunt.utah.gov) for detailed boundary descriptions.



This map is for general reference only. Please visit [hunt.utah.gov](http://hunt.utah.gov) for detailed boundary descriptions. All hunt units **exclude** elk CWMUs, Native American Trust Lands, National Parks and other areas closed to hunting.

 **AVENZA MAPS®** | Explore this map with the **AVENZA APP**. See page 11 for details.

# BUCK DEER HUNT TABLES

*The division does not guarantee access to any private or public land. Unit boundaries may include private property or other excluded areas. Visit [hunt.utah.gov](http://hunt.utah.gov) for detailed boundary descriptions.*

## GENERAL-SEASON BUCK DEER

**Permit fee:** Resident \$46, Nonresident \$599

Use the hunt number to apply. Deer preference point code: **GDR**

### Archery hunts

Hunt name	Hunt #	Season dates
Beaver, East	DB1611	Aug. 15–Sept. 11
Beaver, West	DB1614	Aug. 15–Sept. 11
Boulder/Kaiparowits	DB1518	Aug. 15–Sept. 11
Box Elder	DB1501	Aug. 15–Sept. 11
Cache	DB1502	Aug. 15–Sept. 11
Cedar/Stansbury	DB1623	Aug. 15–Sept. 11
Chalk Creek	DB1600	Aug. 15–Sept. 11
East Canyon	DB1604	Aug. 15–Sept. 11
Fillmore	DB1506	Aug. 15–Sept. 11
Fishlake	DB1519	Aug. 15–Sept. 11
Kamas	DB1508	Aug. 15–Sept. 11
La Sal Mtns	DB1509	Aug. 15–Sept. 11
Manti/San Rafael	DB1503	Aug. 15–Sept. 11
Monroe	DB1510	Aug. 15–Sept. 11
Morgan-South Rich	DB1608	Aug. 15–Sept. 11
Mt Dutton	DB1511	Aug. 15–Sept. 11
Nebo	DB1504	Aug. 15–Sept. 11
Nine Mile	DB1512	Aug. 15–Sept. 11
North Slope	DB1513	Aug. 15–Sept. 11
Ogden	DB1514	Aug. 15–Sept. 11
Oquirrh/Tintic	DB1620	Aug. 15–Sept. 11
Panguitch Lake	DB1516	Aug. 15–Sept. 11
Pine Valley	DB1517	Aug. 15–Sept. 11
San Juan, Abajo Mtns	DB1521	Aug. 15–Sept. 11
Southwest Desert	DB1524	Aug. 15–Sept. 11
Vernal/Bonanza	DB1522	Aug. 15–Sept. 11
Wasatch Mtns, East	DB1525	Aug. 15–Sept. 11

*The division does not guarantee access to any private or public land. Unit boundaries may include private property or other excluded areas. Visit [hunt.utah.gov](http://hunt.utah.gov) for detailed boundary descriptions.*

## GENERAL-SEASON BUCK DEER

### Archery hunts (continued)

Hunt name	Hunt #	Season dates
Wasatch Mtns, West	DB1526	Aug. 15–Sept. 11
West Desert, Swasey	DB1617	Aug. 15–Sept. 11
Yellowstone	DB1523	Aug. 15–Sept. 11
Zion	DB1529	Aug. 15–Sept. 11

### Extended archery only

**Note:** See *Extended archery season dates* on page 9 for additional information.

Hunt name	Hunt #	Season dates
Deer extended archery only	DB0008	See page 9

### Any legal weapon (rifle) — early hunts

Hunt name	Hunt #	Season dates
Box Elder	DB1631	Oct. 7–Oct. 11
Chalk Creek	DB1601	Oct. 7–Oct. 11
East Canyon	DB1605	Oct. 7–Oct. 11
Fillmore	DB1591	Oct. 7–Oct. 11
Fishlake	DB1596	Oct. 7–Oct. 11
Kamas	DB1592	Oct. 7–Oct. 11
Morgan-South Rich	DB1609	Oct. 7–Oct. 11
Nine Mile	DB1593	Oct. 7–Oct. 11
North Slope	DB1598	Oct. 7–Oct. 11
Panguitch Lake	DB1594	Oct. 7–Oct. 11
Pine Valley	DB1595	Oct. 7–Oct. 11
Zion	DB1597	Oct. 7–Oct. 11

*The division does not guarantee access to any private or public land. Unit boundaries may include private property or other excluded areas. Visit [hunt.utah.gov](http://hunt.utah.gov) for detailed boundary descriptions.*

## GENERAL-SEASON BUCK DEER

### Any legal weapon (rifle) hunts

Hunt name	Hunt #	Season dates
Beaver, East	DB1613	Oct. 17–Oct. 25
Box Elder	DB1531	Oct. 17–Oct. 25
Cedar/Stansbury	DB1625	Oct. 17–Oct. 25
Chalk Creek	DB1599	Oct. 17–Oct. 25
East Canyon	DB1603	Oct. 17–Oct. 25
Fillmore	DB1536	Oct. 17–Oct. 25
Fishlake	DB1549	Oct. 17–Oct. 25
Kamas	DB1538	Oct. 17–Oct. 25
La Sal Mtns	DB1539	Oct. 17–Oct. 25
Manti/San Rafael	DB1533	Oct. 17–Oct. 25
Monroe	DB1540	Oct. 17–Oct. 25
Morgan-South Rich	DB1607	Oct. 17–Oct. 25
Mt Dutton	DB1541	Oct. 17–Oct. 25
Nebo	DB1534	Oct. 17–Oct. 25
Nine Mile	DB1542	Oct. 17–Oct. 25
North Slope	DB1543	Oct. 17–Oct. 25
Ogden*	DB1544	Oct. 17–Oct. 25
Oquirrh/Tintic	DB1622	Oct. 17–Oct. 25
Panguitch Lake	DB1546	Oct. 17–Oct. 25
Pine Valley	DB1547	Oct. 17–Oct. 25
San Juan, Abajo Mtns	DB1551	Oct. 17–Oct. 25
Southwest Desert	DB1554	Oct. 17–Oct. 25
Vernal/Bonanza	DB1552	Oct. 17–Oct. 25
Wasatch Mtns, East	DB1555	Oct. 17–Oct. 25
Wasatch Mtns, West	DB1556	Oct. 17–Oct. 25
West Desert, Swasey	DB1619	Oct. 17–Oct. 25
Yellowstone	DB1553	Oct. 17–Oct. 25
Zion	DB1559	Oct. 17–Oct. 25

\*This hunt requires a mandatory CWD submission. Learn more about CWD testing at [wildlife.utah.gov/cwd](http://wildlife.utah.gov/cwd).

*The division does not guarantee access to any private or public land. Unit boundaries may include private property or other excluded areas. Visit [hunt.utah.gov](http://hunt.utah.gov) for detailed boundary descriptions.*

## GENERAL-SEASON BUCK DEER

### Restricted rifle hunts

**Note:** See *Restricted weapons hunts* on page 29 for additional information.

Hunt name	Hunt #	Season dates
Beaver, West	DB1616	Oct. 17–Oct. 25
Boulder/Kaiparowits	DB1629	Oct. 17–Oct. 25
Cache	DB1627	Oct. 17–Oct. 25

### Muzzleloader hunts

Hunt name	Hunt #	Season dates
Beaver, East	DB1612	Sept. 23–Oct. 1
Box Elder	DB1561	Sept. 23–Oct. 1
Cedar/Stansbury	DB1624	Sept. 23–Oct. 1
Chalk Creek	DB1602	Sept. 23–Oct. 1
East Canyon	DB1606	Sept. 23–Oct. 1
Fillmore	DB1566	Sept. 23–Oct. 1
Fishlake	DB1579	Sept. 23–Oct. 1
Kamas	DB1568	Sept. 23–Oct. 1
La Sal Mtns	DB1569	Sept. 23–Oct. 1
Manti/San Rafael	DB1563	Sept. 23–Oct. 1
Monroe	DB1570	Sept. 23–Oct. 1
Morgan-South Rich	DB1610	Sept. 23–Oct. 1
Mt Dutton	DB1571	Sept. 23–Oct. 1
Nebo	DB1564	Sept. 23–Oct. 1
Nine Mile	DB1572	Sept. 23–Oct. 1
North Slope	DB1573	Sept. 23–Oct. 1
Ogden	DB1574	Sept. 23–Oct. 1
Oquirrh/Tintic	DB1621	Sept. 23–Oct. 1
Panguitch Lake	DB1576	Sept. 23–Oct. 1
Pine Valley	DB1577	Sept. 23–Oct. 1
San Juan, Abajo Mtns	DB1581	Sept. 23–Oct. 1
Southwest Desert	DB1584	Sept. 23–Oct. 1

The division does not guarantee access to any private or public land. Unit boundaries may include private property or other excluded areas. Visit [hunt.utah.gov](http://hunt.utah.gov) for detailed boundary descriptions.

## GENERAL-SEASON BUCK DEER

### Muzzleloader hunts (continued)

Hunt name	Hunt #	Season dates
Vernal/Bonanza	DB1582	Sept. 23–Oct. 1
Wasatch Mtns, East	DB1585	Sept. 23–Oct. 1
Wasatch Mtns, West	DB1586	Sept. 23–Oct. 1
West Desert, Swasey	DB1618	Sept. 23–Oct. 1
Yellowstone	DB1583	Sept. 23–Oct. 1
Zion	DB1589	Sept. 23–Oct. 1

### Restricted muzzleloader hunts

**Note:** See *Restricted weapons hunts* on page 29 for additional information.

Hunt name	Hunt #	Season dates
Beaver, West	DB1615	Sept. 23–Oct. 1
Boulder/Kaiparowits	DB1630	Sept. 23–Oct. 1
Cache	DB1628	Sept. 23–Oct. 1

## DEDICATED HUNTER BUCK DEER

**Permit fees:** Resident Adult \$215, Resident Youth \$120,  
Nonresident Adult \$1,248, Nonresident Youth \$915

Use the hunt number to apply. Dedicated Hunter point code: **DHL**

Hunt name	Hunt #
Beaver, East	DB1802
Beaver, West*	DB1803
Boulder/Kaiparowits*	DB1787
Box Elder	DB1770
Cache*	DB1771
Cedar/Stansbury	DB1804
Chalk Creek	DB1799
East Canyon	DB1800
Fillmore	DB1775
Fishlake	DB1788

\**Restricted weapons hunts for muzzleloader and rifle, see page 29 for details.*

## BUCK DEER HUNT TABLES

*The division does not guarantee access to any private or public land. Unit boundaries may include private property or other excluded areas. Visit [hunt.utah.gov](http://hunt.utah.gov) for detailed boundary descriptions.*

### DEDICATED HUNTER BUCK DEER (continued)

Hunt name	Hunt #
Kamas	DB1777
La Sal Mtns	DB1778
Manti/San Rafael	DB1772
Monroe	DB1779
Morgan-South Rich	DB1801
Mt Dutton	DB1780
Nebo	DB1773
Nine Mile	DB1781
North Slope	DB1782
Ogden*	DB1783
Oquirrh/Tintic	DB1805
Panguitch Lake	DB1785
Pine Valley	DB1786
San Juan, Abajo Mtns	DB1790
Southwest Desert	DB1793
Vernal/Bonanza	DB1791
Wasatch Mtns, East	DB1794
Wasatch Mtns, West	DB1795
West Desert, Swasey	DB1806
Yellowstone	DB1792
Zion	DB1798

*\*This hunt requires a mandatory CWD submission for any legal weapon hunts. Learn more about CWD testing at [wildlife.utah.gov/cwd](http://wildlife.utah.gov/cwd).*

*The division does not guarantee access to any private or public land. Unit boundaries may include private property or other excluded areas. Visit [hunt.utah.gov](http://hunt.utah.gov) for detailed boundary descriptions.*

**PREMIUM LIMITED-ENTRY BUCK DEER**

**Permit fee:** Resident \$185, Nonresident \$1,398

Use the hunt number to apply. Deer bonus point code: **DEE**

**Archery hunts**

Hunt name	Hunt #	Season dates
Henry Mtns	DB1000	Aug. 15–Sept. 11
Paunsaugunt	DB1001	Aug. 15–Sept. 11

**Any legal weapon (rifle) hunts**

Hunt name	Hunt #	Season dates
<b>Antelope Island</b>	<b>DB1002</b>	<b>Nov. 11–Nov. 18</b>
Henry Mtns	DB1003	Oct. 17–Oct. 25
Paunsaugunt	DB1004	Oct. 17–Oct. 31

**Muzzleloader hunts**

Hunt name	Hunt #	Season dates
Henry Mtns	DB1005	Sept. 23–Oct. 1
Paunsaugunt	DB1006	Sept. 23–Oct. 1

**Multiseason hunts**

**Permit fee:** Resident \$336, Nonresident \$2,330

Use the hunt number to apply. Deer bonus point code: **DEE**

Hunt name	Hunt #	Season dates
<b>Henry Mtns</b>	<b>DB1007</b>	<b>See DB1000, DB1003 and DB1005</b>
Paunsaugunt	DB1008	See DB1001, DB1004 and DB1006

**BLACK TEXT:** At least one nonresident permit • **BLUE TEXT:** Resident permits only

*The division does not guarantee access to any private or public land. Unit boundaries may include private property or other excluded areas. Visit [hunt.utah.gov](http://hunt.utah.gov) for detailed boundary descriptions.*

## MANAGEMENT AND CACTUS BUCK DEER

**Permit fee:** Permit fee: Resident \$94, Nonresident \$1,070

Use the hunt number to apply. Use bonus point code: **DEE**

### Management buck hunts

Hunt name	Hunt #	Season dates
<b>Antelope Island (any legal weapon) (new)</b>	<b>DB1121</b>	<b>Nov. 16–20</b>
Henry Mtns (any legal weapon)	DB1009	Oct. 26–Oct. 30
Paunsaugunt (archery)	DB1073	Aug. 15–Sept. 11
Paunsaugunt (muzzleloader)	DB1074	Sept. 23–Oct. 1
Paunsaugunt (any legal weapon)	DB1010	Nov. 2–Nov. 20

### Cactus buck hunt

Hunt name	Hunt #	Season dates
Paunsaugunt	DB1058	Nov. 2–Nov. 20

## LIMITED-ENTRY BUCK DEER

**Permit fee:** Resident \$94, Nonresident \$1,070

Use the hunt number to apply. Use bonus point code: **DEE**

### Archery hunts

Hunt name	Hunt #	Season dates
Book Cliffs	DB1011	Aug. 15–Sept. 11
Diamond Mtn	DB1015	Aug. 15–Sept. 11
<b>Dolores Triangle</b>	<b>DB1013</b>	<b>Oct. 31–Nov. 13</b>
Fillmore, Oak Creek LE	DB1012	Aug. 15–Sept. 11
San Juan, Elk Ridge	DB1014	Aug. 15–Sept. 11
West Desert, Vernon	DB1016	Aug. 15–Sept. 11

### Restricted archery hunt

**Note:** See *Restricted weapons hunts* on page 29 for additional information.

Hunt name	Hunt #	Season dates
Thousand Lakes	DB1106	Aug. 15–Sept. 11

**BLACK TEXT:** At least one nonresident permit • **BLUE TEXT:** Resident permits only

# BUCK DEER HUNT TABLES

The division does not guarantee access to any private or public land. Unit boundaries may include private property or other excluded areas. Visit [hunt.utah.gov](http://hunt.utah.gov) for detailed boundary descriptions.

## LIMITED-ENTRY BUCK DEER

### Any legal weapon (rifle) hunts

Hunt name	Hunt #	Season dates
Book Cliffs, North	DB1017	Oct. 17–Oct. 25
Book Cliffs, South	DB1018	Oct. 17–Oct. 25
Castle Valley*	DB1120	Nov. 7–Nov. 22
Diamond Mtn	DB1023	Oct. 17–Oct. 25
Dolores Triangle	DB1020	Nov. 14–Nov. 22
Fillmore, Oak Creek LE	DB1019	Oct. 17–Oct. 25
Little Rockies	DB1115	Nov. 7–Nov. 30
Moab Valley*	DB1119	Nov. 7–Nov. 22
San Juan, Elk Ridge	DB1022	Oct. 17–Oct. 25
West Desert, Vernon	DB1024	Oct. 17–Oct. 25

\* These hunts require a mandatory CWD submission. Learn more about CWD testing at [wildlife.utah.gov/cwd](http://wildlife.utah.gov/cwd).

### Restricted rifle hunts

**Note:** See *Restricted weapons hunts* on page 29 for additional information.

Hunt name	Hunt #	Season dates
Thousand Lakes	DB1108	Oct. 17–Oct. 25

### Muzzleloader hunts

Hunt name	Hunt #	Season dates
Book Cliffs	DB1025	Sept. 23–Oct. 1
Cache, Crawford Mtn	DB1026	Nov. 7–Nov. 22
Diamond Mtn	DB1038	Sept. 23–Oct. 1
<b>Dolores Triangle</b>	<b>DB1031</b>	<b>Nov. 23–Dec. 1</b>
Fillmore, Oak Creek LE	DB1029	Sept. 23–Oct. 1
San Juan, Elk Ridge	DB1037	Sept. 23–Oct. 1
West Desert, Vernon	DB1042	Sept. 23–Oct. 1

### Restricted muzzleloader hunt

**Note:** See *Restricted weapons hunts* on page 29 for additional information.

Hunt name	Hunt #	Season dates
Thousand Lakes	DB1107	Sept. 23–Oct. 1

**BLACK TEXT:** At least one nonresident permit • **BLUE TEXT:** Resident permits only

# BUCK DEER HUNT TABLES

*The division does not guarantee access to any private or public land. Unit boundaries may include private property or other excluded areas. Visit [hunt.utah.gov](http://hunt.utah.gov) for detailed boundary descriptions.*

## LIMITED-ENTRY BUCK DEER

### Muzzleloader hunts on general-season units

Hunt name	Hunt #	Season dates
Beaver, East	DB1110	Oct. 28–Nov. 5
Beaver, West	DB1111	Oct. 28–Nov. 5
Boulder/Kaiparowits	DB1084	Oct. 28–Nov. 5
Box Elder	DB1077	Oct. 28–Nov. 5
Cache	DB1078	Oct. 28–Nov. 5
Cedar/Stansbury	DB1114	Oct. 28–Nov. 5
Chalk Creek	DB1100	Oct. 28–Nov. 5
East Canyon	DB1101	Oct. 28–Nov. 5
Fillmore	DB1028	Oct. 28–Nov. 5
Fishlake	DB1055	Oct. 28–Nov. 5
Kamas	DB1030	Oct. 28–Nov. 5
La Sal Mtns	DB1081	Oct. 28–Nov. 5
Manti/San Rafael	DB1079	Oct. 28–Nov. 5
Monroe	DB1032	Oct. 28–Nov. 5
Morgan-South Rich	DB1103	Oct. 28–Nov. 5
Mt Dutton	DB1053	Oct. 28–Nov. 5
Nebo	DB1080	Oct. 28–Nov. 5
Nine Mile	DB1033	Oct. 28–Nov. 5
North Slope	DB1065	Oct. 28–Nov. 5
Ogden	DB1054	Oct. 28–Nov. 5
Oquirrh/Tintic	DB1113	Oct. 28–Nov. 5
Panguitch Lake	DB1083	Oct. 28–Nov. 5
Pine Valley	DB1034	Oct. 28–Nov. 5
San Juan, Abajo Mtns	DB1085	Oct. 28–Nov. 5
Southwest Desert	DB1040	Oct. 28–Nov. 5
Vernal/Bonanza	DB1086	Oct. 28–Nov. 5
Wasatch Mtns, East	DB1041	Oct. 28–Nov. 5

# BUCK DEER HUNT TABLES

The division does not guarantee access to any private or public land. Unit boundaries may include private property or other excluded areas. Visit [hunt.utah.gov](http://hunt.utah.gov) for detailed boundary descriptions.

## LIMITED-ENTRY BUCK DEER

### Muzzleloader hunts on general-season units (continued)

Hunt name	Hunt #	Season dates
Wasatch Mtns, West	DB1087	Oct. 28–Nov. 5
West Desert, Swasey	DB1112	Oct. 28–Nov. 5
Yellowstone	DB1039	Oct. 28–Nov. 5
Zion	DB1043	Oct. 28–Nov. 5

### Multiseason hunts

**Permit fee:** Resident \$170, Nonresident \$2,130

Use the hunt number to apply. Deer bonus point code: **DEE**

Hunt name	Hunt #	Season dates
Book Cliffs*	DB1044	All limited-entry seasons
<b>Diamond Mtn</b>	<b>DB1047</b>	<b>All limited-entry seasons</b>
<b>Fillmore, Oak Creek LE</b>	<b>DB1045</b>	<b>All limited-entry seasons</b>
<b>San Juan, Elk Ridge*</b>	<b>DB1046</b>	<b>All limited-entry seasons</b>
West Desert, Vernon	DB1048	All limited-entry seasons

\* Multiseason permit holders may not hunt HAMSS hunts.

### Restricted multiseason hunt

**Note:** See *Restricted weapons hunts* on page 29 for additional information.

Hunt name	Hunt #	Season dates
<b>Thousand Lakes</b>	<b>DB1109</b>	<b>All limited-entry seasons</b>

### Handgun-archery-muzzleloader-shotgun-straight walled rifle-only (HAMSS) limited-entry buck deer hunts

Hunt name	Hunt #	Season dates
Book Cliffs, Floy Canyon	DB1090	Nov. 7–Nov. 30
East Canyon	DB1105	Nov. 7–Nov. 30
Kaiparowits HAMSS	DB1091	Nov. 7–Nov. 30
San Juan, Mancos Mesa	DB1116	Nov. 7–Nov. 30

**BLACK TEXT:** At least one nonresident permit • **BLUE TEXT:** Resident permits only

## BULL ELK HUNT TABLES

*The division does not guarantee access to any private or public land. Unit boundaries may include private property or other excluded areas. Visit [hunt.utah.gov](http://hunt.utah.gov) for detailed boundary descriptions.*

### DRAW-ONLY YOUTH ANY BULL/HUNTER'S CHOICE ELK

**Permit fee:** Resident \$50, Nonresident \$749

**Note:** This permit is not valid on limited-entry bull elk or spike-only units. See page 39.

Hunt name	Hunt #	Season dates
Draw-only youth any bull/hunter's choice elk*	EB1007	Sept. 12–Sept. 22

\* This hunt overlaps the last part of the general-season archery any bull elk hunt, which runs until Sept. 16, 2026.

### LIMITED-ENTRY BULL ELK

**Permit fee:** Resident \$314, Nonresident \$1,950

Use the hunt number to apply. Elk bonus point code: **ELK**

#### Archery hunts

Hunt name	Hunt #	Season dates
Beaver, East	EB3000	Aug. 15–Sept. 15
Book Cliffs, Bitter Creek/East	EB3160	Aug. 15–Sept. 15
<b>Book Cliffs, Little Creek Roadless</b>	<b>EB3002</b>	<b>Aug. 15–Sept. 15</b>
Boulder	EB3145	Aug. 15–Sept. 15
<b>Box Elder, Pilot Mtn</b>	<b>EB3130</b>	<b>Aug. 15–Sept. 6</b>
Cache, Meadowville <sup>†</sup>	EB3003	Aug. 15–Sept. 15
Cache, South	EB3005	Aug. 15–Sept. 15
Diamond Mtn	EB3020	Aug. 15–Sept. 15
Fillmore, Pahvant	EB3008	Aug. 15–Sept. 15
Fishlake/Thousand Lakes	EB3018	Aug. 15–Sept. 15
La Sal Mtns	EB3009	Aug. 15–Sept. 15
Manti	EB3006	Aug. 15–Sept. 15
Monroe	EB3010	Aug. 15–Sept. 15
Mt Dutton	EB3011	Aug. 15–Sept. 15
Nebo/San Pitch Mtns	EB3173	Aug. 15–Sept. 15
North Slope, Three Corners	EB3013	Aug. 15–Sept. 15
Panguitch Lake	EB3015	Aug. 15–Sept. 15
San Juan Bull Elk	EB3019	Aug. 15–Sept. 15
Southwest Desert, South	EB3146	Aug. 15–Sept. 15
Wasatch Mtns	EB3022	Aug. 15–Sept. 15

<sup>†</sup> This unit is composed of all or largely private property.

Hunters should obtain documented permission from the landowner before applying for this hunt.

**BLACK TEXT:** At least one nonresident permit • **BLUE TEXT:** Resident permits only

# BULL ELK HUNT TABLES

*The division does not guarantee access to any private or public land. Unit boundaries may include private property or other excluded areas. Visit [hunt.utah.gov](http://hunt.utah.gov) for detailed boundary descriptions.*

## LIMITED-ENTRY BULL ELK

### September archery

Hunt name	Hunt #	Season dates
Barney Top/Kaiparowits	EB3135	Sept. 1–Sept. 30
Cache, North	EB3132	Sept. 1–Sept. 30
Southwest Desert, North	EB3136	Sept. 1–Sept. 30
West Desert, Deep Creek	EB3137	Sept. 1–Sept. 30

### Archery hunts — late season

**Note:** Multiseason limited-entry elk permits are not valid on this late-season elk hunt.

Hunt name	Hunt #	Season dates
Beaver, East	EB3158	Nov. 28–Dec. 13
Book Cliffs, Bitter Creek/East	EB3161	Nov. 28–Dec. 13
Boulder	EB3190	Nov. 28–Dec. 13
Cache, Meadowville <sup>†</sup>	EB3168	Nov. 28–Dec. 13
Cache, South	EB3170	Nov. 28–Dec. 13
Diamond Mtn	EB3195	Nov. 28–Dec. 13
Fillmore, Pahvant	EB3180	Nov. 28–Dec. 13
Fishlake/Thousand Lakes	EB3192	Nov. 28–Dec. 13
La Sal Mtns	EB3182	Nov. 28–Dec. 13
Manti	EB3172	Nov. 28–Dec. 13
Monroe	EB3184	Nov. 28–Dec. 13
Mt Dutton	EB3186	Nov. 28–Dec. 13
Nebo/San Pitch Mtns	EB3174	Nov. 28–Dec. 13
Panguitch Lake	EB3188	Nov. 28–Dec. 13
San Juan Bull Elk	EB3193	Nov. 28–Dec. 13
Southwest Desert, South	EB3197	Nov. 28–Dec. 13
Wasatch Mtns	EB3199	Nov. 28–Dec. 13

<sup>†</sup> *This unit is composed of all or largely private property.*

*Hunters should obtain documented permission from the landowner before applying for this hunt.*

*The division does not guarantee access to any private or public land. Unit boundaries may include private property or other excluded areas. Visit [hunt.utah.gov](http://hunt.utah.gov) for detailed boundary descriptions.*

## LIMITED-ENTRY BULL ELK

### Any legal weapon (rifle) — early hunts

Hunt name	Hunt #	Season dates
Beaver, East	EB3024	Sept. 16–Sept. 20
Book Cliffs, Bitter Creek/East	EB3162	Sept. 16–Sept. 20
<b>Book Cliffs, Little Creek Roadless</b>	<b>EB3028</b>	<b>Sept. 16–Sept. 20</b>
Boulder	EB3148	Sept. 16–Sept. 20
Box Elder, Grouse Creek	EB3147	Sept. 16–Sept. 20
Box Elder, Pilot Mtn	EB3031	Sept. 12–Oct. 2
Cache, Meadowville <sup>†</sup>	EB3032	Sept. 16–Sept. 20
<b>Cache, South</b>	<b>EB3036</b>	<b>Sept. 16–Sept. 20</b>
Diamond Mtn	EB3068	Sept. 16–Sept. 20
Fillmore, Pahvant	EB3042	Sept. 16–Sept. 20
Fishlake/Thousand Lakes	EB3063	Sept. 16–Sept. 20
La Sal Mtns	EB3045	Sept. 16–Sept. 20
Manti	EB3038	Sept. 16–Sept. 20
Monroe	EB3047	Sept. 16–Sept. 20
Mt Dutton	EB3049	Sept. 16–Sept. 20
Nebo/San Pitch Mtn	EB3175	Sept. 16–Sept. 20
<b>North Slope, Three Corners</b>	<b>EB3210</b>	<b>Sept. 16–Sept. 20</b>
Panguitch Lake	EB3056	Sept. 16–Sept. 20
San Juan Bull Elk	EB3066	Sept. 16–Sept. 20
Southwest Desert, South	EB3149	Sept. 16–Sept. 20
Wasatch Mtns	EB3072	Sept. 16–Sept. 20

<sup>†</sup> This unit is composed of all or largely private property.

Hunters should obtain documented permission from the landowner before applying for this hunt.

**BLACK TEXT:** At least one nonresident permit • **BLUE TEXT:** Resident permits only

# BULL ELK HUNT TABLES

*The division does not guarantee access to any private or public land. Unit boundaries may include private property or other excluded areas. Visit [hunt.utah.gov](http://hunt.utah.gov) for detailed boundary descriptions.*

## LIMITED-ENTRY BULL ELK

### Any legal weapon (rifle) — midseason hunts

Hunt name	Hunt #	Season dates
Beaver, East	EB3159	Oct. 3–Oct. 15
Book Cliffs, Bitter Creek/East	EB3164	Oct. 3–Oct. 15
Book Cliffs, Little Creek Roadless	EB3167	Oct. 3–Oct. 15
Boulder	EB3191	Oct. 3–Oct. 15
Box Elder, Grouse Creek	EB3150	Oct. 3–Oct. 15
Cache, Meadowville <sup>†</sup>	EB3169	Oct. 3–Oct. 15
Cache, South	EB3171	Oct. 3–Oct. 15
Diamond Mtn	EB3069	Oct. 3–Oct. 15
Fillmore, Pahvant	EB3181	Oct. 3–Oct. 15
Fishlake/Thousand Lakes	EB3064	Oct. 3–Oct. 15
La Sal Mtns	EB3183	Oct. 3–Oct. 15
Manti	EB3126	Oct. 3–Oct. 15
Monroe	EB3185	Oct. 3–Oct. 15
Mt Dutton	EB3187	Oct. 3–Oct. 15
Nebo/San Pitch Mtn	EB3177	Oct. 3–Oct. 15
North Slope, Three Corners	EB3053	Oct. 3–Oct. 15
Panguitch Lake	EB3189	Oct. 3–Oct. 15
San Juan Bull Elk	EB3194	Oct. 3–Oct. 15
Southwest Desert, South	EB3198	Oct. 3–Oct. 15
Wasatch Mtns	EB3127	Oct. 3–Oct. 15

<sup>†</sup> *This unit is composed of all or largely private property.*

*Hunters should obtain documented permission from the landowner before applying for this hunt.*

*The division does not guarantee access to any private or public land. Unit boundaries may include private property or other excluded areas. Visit [hunt.utah.gov](http://hunt.utah.gov) for detailed boundary descriptions.*

## LIMITED-ENTRY BULL ELK

### Any legal weapon (rifle) — late hunts

Hunt name	Hunt #	Season dates
Beaver, East	EB3025	Nov. 7–Nov. 15
Book Cliffs, Bitter Creek/East	EB3163	Nov. 7–Nov. 15
Boulder	EB3151	Nov. 7–Nov. 15
Cache, Meadowville <sup>†</sup>	EB3033	Nov. 7–Nov. 15
Cache, South	EB3037	Nov. 7–Nov. 15
Diamond Mtn	EB3196	Nov. 7–Nov. 15
Dolores Triangle	EB3044	Dec. 5, 2026–Jan. 31, 2027
Fillmore, Pahvant	EB3043	Nov. 7–Nov. 15
Fishlake/Thousand Lakes	EB3065	Nov. 7–Nov. 15
La Sal Mtns	EB3046	Nov. 7–Nov. 15
Manti	EB3039	Nov. 7–Nov. 15
Monroe	EB3048	Nov. 7–Nov. 15
Morgan-South Rich	EB3208	Dec. 19–Dec. 27
Mt Dutton	EB3050	Nov. 7–Nov. 15
Nebo/San Pitch Mtns	EB3176	Nov. 7–Nov. 15
Panguitch Lake	EB3057	Nov. 7–Nov. 15
San Juan Bull Elk	EB3067	Nov. 7–Nov. 15
Southwest Desert, South	EB3152	Nov. 7–Nov. 15
Wasatch Mtns	EB3073	Nov. 7–Nov. 15

<sup>†</sup> *This unit is composed of all or largely private property. Hunters should obtain documented permission from the landowner before applying for this hunt.*

# BULL ELK HUNT TABLES

*The division does not guarantee access to any private or public land. Unit boundaries may include private property or other excluded areas. Visit [hunt.utah.gov](http://hunt.utah.gov) for detailed boundary descriptions.*

## LIMITED-ENTRY BULL ELK

### Muzzleloader hunts

Hunt name	Hunt #	Season dates
Beaver, East	EB3077	Sept. 21–Oct. 2
Book Cliffs, Bitter Creek/East	EB3166	Sept. 21–Oct. 2
<b>Book Cliffs, Little Creek Roadless</b>	<b>EB3079</b>	<b>Sept. 21–Oct. 2</b>
Boulder	EB3154	Sept. 21–Oct. 2
Box Elder, Grouse Creek	EB3153	Sept. 21–Oct. 2
Cache, Meadowville <sup>†</sup>	EB3081	Sept. 21–Oct. 2
Cache, South	EB3083	Sept. 21–Oct. 2
Diamond Mtn	EB3098	Sept. 21–Oct. 2
Fillmore, Pahvant	EB3086	Sept. 21–Oct. 2
Fishlake/Thousand Lakes	EB3096	Sept. 21–Oct. 2
La Sal Mtns	EB3087	Sept. 21–Oct. 2
Manti	EB3084	Sept. 21–Oct. 2
Monroe	EB3088	Sept. 21–Oct. 2
Mt Dutton	EB3089	Sept. 21–Oct. 2
Nebo/San Pitch Mtns	EB3179	Sept. 21–Oct. 2
<b>North Slope, Three Corners</b>	<b>EB3091</b>	<b>Sept. 21–Oct. 2</b>
Panguitch Lake	EB3093	Sept. 21–Oct. 2
San Juan Bull Elk	EB3097	Sept. 21–Oct. 2
Southwest Desert, South	EB3155	Sept. 21–Oct. 2
Wasatch Mtns	EB3100	Sept. 21–Oct. 2

<sup>†</sup> *This unit is composed of all or largely private property. Hunters should obtain documented permission from the landowner before applying for this hunt.*

**BLACK TEXT:** At least one nonresident permit • **BLUE TEXT:** Resident permits only

*The division does not guarantee access to any private or public land. Unit boundaries may include private property or other excluded areas. Visit [hunt.utah.gov](http://hunt.utah.gov) for detailed boundary descriptions.*

## LIMITED-ENTRY BULL ELK

### Multiseason hunts

**Permit fee:** Resident \$564, Nonresident \$2,655

**Note:** These hunts exclude limited-entry late-season archery elk hunts (Nov. 28–Dec. 13, 2026).

Hunt name	Hunt #	Season dates
Beaver, East	EB3102	Limited-entry seasons
Book Cliffs, Bitter Creek/East	EB3165	Limited-entry seasons
Book Cliffs, Little Creek Roadless	EB3104	Limited-entry seasons
Boulder	EB3156	Limited-entry seasons
Cache, Meadowville <sup>†</sup>	EB3105	Limited-entry seasons
Cache, South	EB3107	Limited-entry seasons
Diamond Mtn	EB3122	Limited-entry seasons
Fillmore, Pahvant	EB3110	Limited-entry seasons
Fishlake/Thousand Lakes	EB3120	Limited-entry seasons
La Sal Mtns	EB3111	Limited-entry seasons
Manti	EB3108	Limited-entry seasons
Monroe	EB3112	Limited-entry seasons
Mt Dutton	EB3113	Limited-entry seasons
Nebo/San Pitch Mtns	EB3178	Limited-entry seasons
North Slope, Three Corners	EB3115	Limited-entry seasons
Panguitch Lake	EB3117	Limited-entry seasons
San Juan Bull Elk	EB3121	Limited-entry seasons
Southwest Desert, South	EB3157	Limited-entry seasons
Wasatch Mtns	EB3124	Limited-entry seasons

<sup>†</sup> This unit is composed of all or largely private property.

Hunters should obtain documented permission from the landowner before applying for this hunt.

**BLACK TEXT:** At least one nonresident permit • **BLUE TEXT:** Resident permits only

# BULL ELK–BUCK PRONGHORN HUNT TABLES

The division does not guarantee access to any private or public land. Unit boundaries may include private property or other excluded areas. Visit [hunt.utah.gov](http://hunt.utah.gov) for detailed boundary descriptions.

## LIMITED-ENTRY BULL ELK

### Handgun-archery-muzzleloader-shotgun-straight walled rifle-only (HAMSS) limited-entry bull elk hunts

Hunt name	Hunt #	Season dates
Barney Top/Kaiparowits	EB3142	Nov. 7–Nov. 30
Cache, North	EB3139	Nov. 7–Nov. 30
East Canyon	EB3205	Dec. 19–Dec. 27
Southwest Desert, North	EB3143	Nov. 7–Nov. 30
West Desert, Deep Creek	EB3144	Nov. 7–Nov. 30

## LIMITED-ENTRY BUCK PRONGHORN

**Permit fee:** Resident \$63, Nonresident \$571

Use the hunt number to apply. Pronghorn bonus point code: **PRO**

### Archery hunts

Hunt name	Hunt #	Season dates
Beaver	PB5000	Aug. 15–Sept. 11
Book Cliffs, Bitter Creek	PB5001	Aug. 15–Sept. 11
Book Cliffs, South	PB5002	Aug. 15–Sept. 11
<b>Box Elder, Promontory<sup>†</sup></b>	<b>PB5003</b>	<b>Aug. 15–Sept. 11</b>
Box Elder, Puddle Valley	PB5004	Aug. 15–Sept. 11
Box Elder, Snowville	PB5005	Aug. 15–Sept. 11
Box Elder, West	PB5006	Aug. 15–Sept. 11
<b>Cache, Rich</b>	<b>PB5074</b>	<b>Aug. 15–Sept. 11</b>
Diamond Mtn/Bonanza	PB5016	Aug. 15–Sept. 11
Fillmore, Oak Creek South	PB5008	Aug. 15–Sept. 11
<b>La Sal, Potash/South Cisco</b>	<b>PB5009</b>	<b>Aug. 15–Sept. 11</b>
Mt Dutton/Paunsaugunt	PB5332	Aug. 15–Sept. 11
Nine Mile, Anthro-Myton Bench	PB5011	Aug. 15–Sept. 11
<b>Nine Mile, Range Creek</b>	<b>PB5053</b>	<b>Aug. 15–Sept. 11</b>

<sup>†</sup>This unit is composed of all or largely private property.

Hunters should obtain documented permission from the landowner before applying for this hunt.

**BLACK TEXT:** At least one nonresident permit • **BLUE TEXT:** Resident permits only

# BUCK PRONGHORN HUNT TABLES

*The division does not guarantee access to any private or public land. Unit boundaries may include private property or other excluded areas. Visit [hunt.utah.gov](http://hunt.utah.gov) for detailed boundary descriptions.*

## LIMITED-ENTRY BUCK PRONGHORN

### Archery hunts (continued)

Hunt name	Hunt #	Season dates
North Slope, Three Corners/West Daggett	PB5012	Aug. 15–Sept. 11
Panguitch Lake/Zion, North	PB5054	Aug. 15–Sept. 11
Parker Mtn	PB5077	Aug. 15–Sept. 11
Pine Valley	PB5013	Aug. 15–Sept. 11
<b>San Rafael, Desert</b>	<b>PB5055</b>	<b>Aug. 15–Sept. 11</b>
San Rafael, North	PB5015	Aug. 15–Sept. 11
Southwest Desert	PB5018	Aug. 15–Sept. 11
Vernal	PB5017	Aug. 15–Sept. 11
West Desert, Riverbed	PB5019	Aug. 15–Sept. 11
West Desert, Rush Valley	PB5020	Aug. 15–Sept. 11
West Desert, Snake Valley	PB5021	Aug. 15–Sept. 11

### Muzzleloader hunts

Hunt name	Hunt #	Season dates
Box Elder, Snowville	PB5080	Sept. 23–Oct. 1
Box Elder, West	PB5079	Sept. 23–Oct. 1
<b>Cache, Rich</b>	<b>PB5075</b>	<b>Sept. 23–Oct. 1</b>
Diamond Mtn/Bonanza	PB5060	Sept. 23–Oct. 1
Fillmore, Oak Creek South	PB5065	Sept. 23–Oct. 1
Nine Mile, Anthro-Myton Bench	PB5059	Sept. 23–Oct. 1
North Slope, Three Corners/West Daggett	PB5066	Sept. 23–Oct. 1
Panguitch Lake/Zion, North	PB5061	Sept. 23–Oct. 1
Parker Mtn	PB5078	Sept. 23–Oct. 1
Pine Valley	PB5062	Sept. 23–Oct. 1
San Rafael, North	PB5056	Sept. 23–Oct. 1
Southwest Desert	PB5024	Sept. 23–Oct. 1
Vernal	PB5072	Sept. 23–Oct. 1

**BLACK TEXT:** At least one nonresident permit • **BLUE TEXT:** Resident permits only

# BUCK PRONGHORN HUNT TABLES

*The division does not guarantee access to any private or public land. Unit boundaries may include private property or other excluded areas. Visit [hunt.utah.gov](http://hunt.utah.gov) for detailed boundary descriptions.*

## LIMITED-ENTRY BUCK PRONGHORN

### Any legal weapon (rifle) hunts

Hunt name	Hunt #	Season dates
Beaver	PB5025	Sept. 12–Sept. 20
Book Cliffs, Bitter Creek	PB5026	Sept. 12–Sept. 20
Book Cliffs, South	PB5027	Sept. 12–Sept. 20
Box Elder, Promontory <sup>†</sup>	PB5028	Sept. 12–Sept. 20
Box Elder, Puddle Valley	PB5029	Sept. 12–Sept. 20
Box Elder, Snowville	PB5030	Sept. 12–Sept. 20
Box Elder, West	PB5031	Sept. 12–Sept. 20
<b>Cache, Rich</b>	<b>PB5073</b>	<b>Sept. 12–Sept. 20</b>
Diamond Mtn/Bonanza	PB5047	Sept. 12–Sept. 20
Fillmore, Oak Creek South	PB5033	Sept. 12–Sept. 20
<b>Kaiparowits</b>	<b>PB5034</b>	<b>Sept. 12–Sept. 20</b>
La Sal, Potash/South Cisco	PB5035	Sept. 12–Sept. 20
Mt Dutton/Paunsaugunt	PB5331	Sept. 12–Sept. 20
Nine Mile, Anthro-Myton Bench	PB5037	Sept. 12–Sept. 20
Nine Mile, Range Creek	PB5038	Sept. 12–Sept. 20
North Slope, Summit	PB5039	Sept. 12–Sept. 20
North Slope, Three Corners/West Daggett	PB5040	Sept. 12–Sept. 20
Panguitch Lake/Zion, North	PB5041	Sept. 12–Sept. 20
Parker Mtn	PB5076	Sept. 12–Sept. 20
Pine Valley	PB5042	Sept. 12–Sept. 20
<b>San Juan, Hatch Point</b>	<b>PB5044</b>	<b>Sept. 12–Sept. 20</b>
San Rafael, Desert	PB5045	Sept. 12–Sept. 20
San Rafael, North	PB5046	Sept. 12–Sept. 20
Southwest Desert	PB5049	Sept. 12–Sept. 20

<sup>†</sup>This unit is composed of all or largely private property.  
Hunters should obtain documented permission from the landowner before applying for this hunt.

**BLACK TEXT:** At least one nonresident permit • **BLUE TEXT:** Resident permits only

## BUCK PRONGHORN HUNT TABLES

The division does not guarantee access to any private or public land. Unit boundaries may include private property or other excluded areas. Visit [hunt.utah.gov](http://hunt.utah.gov) for detailed boundary descriptions.

### LIMITED-ENTRY BUCK PRONGHORN

#### Any legal weapon (rifle) hunts (continued)

Hunt name	Hunt #	Season dates
Vernal	PB5048	Sept. 12–Sept. 20
West Desert, Riverbed	PB5050	Sept. 12–Sept. 20
West Desert, Rush Valley	PB5051	Sept. 12–Sept. 20
West Desert, Snake Valley	PB5052	Sept. 12–Sept. 20

### ONCE-IN-A-LIFETIME BULL MOOSE HUNTS

**Permit fee:** Resident \$454, Nonresident \$3,488

Use the hunt number to apply. Moose bonus point code: **MOO**

Hunt name	Hunt #	Season dates
<b>Box Elder</b>	<b>MB6012</b>	<b>Sept. 12–Oct. 31</b>
Cache	MB6000	Sept. 12–Oct. 31
<b>Chalk Creek<sup>†</sup></b>	<b>MB6001</b>	<b>Sept. 12–Oct. 31</b>
<b>Diamond Mtn/Vernal</b>	<b>MB6009</b>	<b>Sept. 12–Oct. 31</b>
<b>East Canyon<sup>†</sup></b>	<b>MB6002</b>	<b>Sept. 12–Oct. 31</b>
<b>East Canyon, Morgan-Summit<sup>†</sup></b>	<b>MB6003</b>	<b>Sept. 12–Oct. 31</b>
<b>Kamas</b>	<b>MB6004</b>	<b>Sept. 12–Oct. 31</b>
<b>Morgan-South Rich<sup>†</sup></b>	<b>MB6005</b>	<b>Sept. 12–Oct. 31</b>
North Slope, Summit	MB6006	Sept. 12–Oct. 31
North Slope, Three Corners/West Daggett	MB6007	Sept. 12–Oct. 31
<b>Ogden<sup>†</sup></b>	<b>MB6008</b>	<b>Sept. 12–Oct. 31</b>
Wasatch Mtns/Central Mtns	MB6011	Sept. 12–Oct. 31
<b>Yellowstone</b>	<b>MB6010</b>	<b>Sept. 12–Oct. 31</b>

<sup>†</sup> This unit is composed of all or largely private property.

Hunters should obtain documented permission from the landowner before applying for this hunt.

**BLACK TEXT:** At least one nonresident permit • **BLUE TEXT:** Resident permits only

*The division does not guarantee access to any private or public land. Unit boundaries may include private property or other excluded areas. Visit [hunt.utah.gov](http://hunt.utah.gov) for detailed boundary descriptions.*

## ONCE-IN-A-LIFETIME BISON HUNTS

**Permit fee:** (except Antelope Island) Resident \$460, Nonresident \$4,840

**Antelope Island permit fee:** Resident \$1,221

Use the hunt number to apply. Bison bonus point code: **BIS**

### Any legal weapon hunts, hunter's choice

Hunt name	Hunt #	Season dates
Book Cliffs, Bitter Creek	BI6534	Sept. 12–Sept. 20
Book Cliffs, Bitter Creek	BI6535	Oct. 3–Oct. 15
Book Cliffs, Little Creek/South	BI6531	Sept. 21–Oct. 2
Book Cliffs, Little Creek/South	BI6537	Nov. 7, 2026–Jan. 31, 2027
Henry Mtns	BI6503	Oct. 28–Nov. 8
Henry Mtns	BI6504	Nov. 11–Nov. 22
Henry Mtns	BI6516	Nov. 25–Dec. 6

### Any legal weapon hunt

Hunt name	Hunt #	Season dates
Antelope Island	BI6500	Dec. 7–Dec. 9

### Any legal weapon hunts, cow only

Hunt name	Hunt #	Season dates
Book Cliffs, Bitter Creek	BI6536	Nov. 14–Nov. 29
Book Cliffs, Little Creek/South	BI6529	Oct. 17–Oct. 27
Henry Mtns	BI6505	Dec. 9–Dec. 20
Henry Mtns	BI6506	Dec. 23, 2026–Jan. 3, 2027
Henry Mtns (new)	BI6539	Jan. 6–Jan. 17

### Archery hunts, hunter's choice

Hunt name	Hunt #	Season dates
Book Cliffs, Bitter Creek	BI6532	Aug. 15–Sept. 11
Book Cliffs, Little Creek/South	BI6528	Aug. 15–Sept. 11
Henry Mtns	BI6509	Jan. 18–Jan. 31, 2027

**BLACK TEXT:** At least one nonresident permit • **BLUE TEXT:** Resident permits only

# BIGHORN SHEEP HUNT TABLES

The division does not guarantee access to any private or public land. Unit boundaries may include private property or other excluded areas. Visit [hunt.utah.gov](http://hunt.utah.gov) for detailed boundary descriptions.

## ONCE-IN-A-LIFETIME DESERT BIGHORN SHEEP HUNTS

**Permit fee:** Resident \$564, Nonresident \$3,988

Use the hunt number to apply. Desert bighorn sheep bonus point code: **DBS**

### Any legal weapon hunts

Hunt name	Hunt #	Season dates
Escalante, East	DS6626	Sept. 12–Nov. 10
<b>Escalante, West</b>	<b>DS6627</b>	<b>Sept. 12–Nov. 10</b>
<b>Henry Mtns</b>	<b>DS6600</b>	<b>Sept. 12–Nov. 10</b>
Kaiparowits, East	DS6601	Sept. 12–Nov. 10
Kaiparowits, West	DS6603	Sept. 12–Nov. 10
<b>La Sal, Potash/South Cisco</b>	<b>DS6604</b>	<b>Sept. 12–Nov. 10</b>
<b>Mineral Mtns</b>	<b>DS6625</b>	<b>Sept. 12–Nov. 10</b>
<b>Pine Valley, Beaver Dam</b>	<b>DS6621</b>	<b>Oct. 24–Dec. 25</b>
<b>Pine Valley, Virgin River</b>	<b>DS6620</b>	<b>Oct. 24–Dec. 25</b>
San Juan, Lockhart	DS6606	Sept. 12–Nov. 10
San Juan, North	DS6622	Sept. 12–Nov. 10
San Juan, San Juan River	DS6623	Sept. 12–Nov. 10
<b>San Juan, South</b>	<b>DS6607</b>	<b>Sept. 12–Nov. 10</b>
San Rafael, Dirty Devil*	DS6608	Sept. 12–Nov. 10
<b>San Rafael, North</b>	<b>DS6609</b>	<b>Sept. 12–Nov. 10</b>
San Rafael, South†	DS6610	Sept. 12–Nov. 10
<b>Zion</b>	<b>DS6611</b>	<b>Sept. 12–Nov. 10</b>

### Archery hunts

Hunt name	Hunt #	Season dates
<b>San Rafael, Dirty Devil</b>	<b>DS6624</b>	<b>Nov. 11–Dec. 17</b>

\* Nonresidents may hunt both the San Rafael, Dirty Devil and the Henry Mtns units—apply for #DS6608

† Nonresidents may hunt both the San Rafael, North and San Rafael, South subunits—apply for #DS6610

**BLACK TEXT:** At least one nonresident permit • **BLUE TEXT:** Resident permits only

# BIGHORN SHEEP HUNT TABLES

*The division does not guarantee access to any private or public land. Unit boundaries may include private property or other excluded areas. Visit [hunt.utah.gov](http://hunt.utah.gov) for detailed boundary descriptions.*

## ONCE-IN-A-LIFETIME ROCKY MOUNTAIN BIGHORN SHEEP HUNTS

**Permit fee:** Resident \$564, Nonresident \$3,988

Use the hunt number to apply. Rocky Mountain bighorn sheep bonus point code: **RMB**

### Any legal weapon hunts

Hunt name	Hunt #	Season dates
<b>Antelope Island</b>	<b>RS6700</b>	<b>Nov. 9–Nov. 16</b>
Book Cliffs, South	RS6701	Oct. 31–Nov. 30
<b>Box Elder, Newfoundland Mtn</b>	<b>RS6703</b>	<b>Oct. 3–Oct. 23</b>
Box Elder, Newfoundland Mtn	RS6704	Oct. 24–Nov. 13
<b>Fillmore, Oak Creek</b>	<b>RS6720</b>	<b>Oct. 3–Oct. 23</b>
Fillmore, Oak Creek	RS6726	Oct. 24–Nov. 13
<b>Nebo</b>	<b>RS6725</b>	<b>Oct. 31–Nov. 30</b>
Nine Mile, Gray Canyon	RS6712	Oct. 31–Nov. 30
<b>Nine Mile, Jack Creek</b>	<b>RS6713</b>	<b>Oct. 31–Nov. 30</b>
<b>North Slope, Summit/West Daggett</b>	<b>RS6709</b>	<b>Sept. 14–Nov. 30</b>
<b>North Slope, Three Corners</b>	<b>RS6708</b>	<b>Sept. 14–Nov. 30</b>
<b>Oquirrh-Stansbury, West</b>	<b>RS6721</b>	<b>Oct. 31–Nov. 30</b>
<b>Wasatch Mtns, West</b>	<b>RS6724</b>	<b>Oct. 31–Nov. 30</b>

### Archery hunts

Hunt name	Hunt #	Season dates
<b>Box Elder, Newfoundland Mtn</b>	<b>RS6722</b>	<b>Nov. 14–Dec. 6</b>
<b>Fillmore, Oak Creek</b>	<b>RS6727</b>	<b>Nov. 14–Dec. 6</b>

**BLACK TEXT:** At least one nonresident permit • **BLUE TEXT:** Resident permits only

*The division does not guarantee access to any private or public land. Unit boundaries may include private property or other excluded areas. Visit [hunt.utah.gov](http://hunt.utah.gov) for detailed boundary descriptions.*

## ONCE-IN-A-LIFETIME MOUNTAIN GOAT HUNTS

**Permit fee:** Resident \$454, Nonresident \$3,488

Use the hunt number to apply. Mountain goat bonus point code: **GOA**

### Any legal weapon hunts

Hunt name	Hunt #	Season dates
Beaver	G06800	Sept. 5–Sept. 27
<b>Beaver</b>	<b>G06801</b>	<b>Sept. 28–Oct. 26</b>
<b>High Uintas Central</b>	<b>G06805</b>	<b>Sept. 5–Oct. 31</b>
<b>High Uintas East</b>	<b>G06806</b>	<b>Sept. 5–Oct. 31</b>
<b>High Uintas Kamas</b>	<b>G06804</b>	<b>Sept. 5–Oct. 31</b>
<b>High Uintas Leidy Peak</b>	<b>G06807</b>	<b>Sept. 5–Oct. 31</b>
High Uintas West	G06808	Sept. 5–Oct. 31
La Sal Mtns	G06817	Sept. 5–Nov. 25
<b>Mt Dutton</b>	<b>G06814</b>	<b>Sept. 5–Nov. 25</b>
Nebo	G06803	Sept. 26–Nov. 25
<b>Ogden, Willard Peak</b>	<b>G06810</b>	<b>Sept. 5–Nov. 25</b>
<b>Wasatch Mtns, Box Elder Peak</b>	<b>G06818</b>	<b>Sept. 5–Nov. 25</b>
<b>Wasatch Mtns, Lone Peak</b>	<b>G06819</b>	<b>Sept. 5–Nov. 25</b>
<b>Wasatch Mtns, Provo Peak</b>	<b>G06813</b>	<b>Sept. 5–Nov. 25</b>
Wasatch Mtns, Timpanogos	G06820	Sept. 5–Nov. 25

### Archery hunts

Hunt name	Hunt #	Season dates
<b>Beaver</b>	<b>G06822</b>	<b>Nov. 14–Nov. 23</b>
<b>Nebo</b>	<b>G06821</b>	<b>Sept. 16–Sept. 25</b>

**BLACK TEXT:** At least one nonresident permit • **BLUE TEXT:** Resident permits only

## COOPERATIVE WILDLIFE MANAGEMENT UNITS

Utah Admin. Rule R657-37

Utah's Cooperative Wildlife Management Unit (CWMU) program provides landowners with an economic incentive to keep their private range and forest lands as productive wildlife habitat.

The landowners receive vouchers for hunting permits, which they can sell for profit, as long as they also allow a percentage of public hunters on their lands.

If you're a Utah resident, there are two ways to obtain a CWMU permit: you can apply for one in the state's big game drawing, or you can obtain a permit voucher from the landowner or operator of the CWMU you want to hunt.

If you're not a resident of Utah, you cannot apply for a CWMU permit in the public drawing. You can, however, obtain a permit voucher directly from the CWMU landowner or operator.

Keep in mind that whether you draw or purchase a permit, you may not obtain more than one of each of the following permits during the 2026 big game season:

- Buck deer permit
- Bull elk permit
- Buck pronghorn permit

For example, if you draw a general-season buck deer permit—and then decide you want to hunt on a CWMU instead—you must surrender your general-season permit before the opening day of the season listed on your permit and before redeeming the private CWMU voucher for a permit.

**Reminder:** If you choose to surrender any big game permit you've drawn (to purchase/obtain a private CWMU voucher, for example), be sure to do so **at least 30 days before your hunt begins** or you could lose previously accrued preference or bonus points. For details, see page 33.

For more information on Utah's CWMU program, including details about individual properties, please visit [wildlife.utah.gov/cwmu](http://wildlife.utah.gov/cwmu).

### CWMU PREMIUM BUCK DEER HUNTS

**Permit fee:** Resident \$185, use the hunt number to apply.

Nonresidents may only obtain a CWMU permit directly through the operator.

Hunt name	Hunt #	County	Public permits
Alton	DB1200	Kane	3

### CWMU MANAGEMENT AND CACTUS BUCK DEER HUNTS

**Permit fee:** Resident \$94, use the hunt number to apply.

Nonresidents may only obtain a CWMU permit directly through the operator.

Hunt name	Hunt #	County	Public permits
Alton (management buck)	DB1201	Kane	1
Alton (cactus buck)	DB1334	Kane	1

# CWMU BUCK DEER HUNT TABLES

For details about individual properties, including public hunt dates and contact information, please visit [wildlife.utah.gov/cwmu](http://wildlife.utah.gov/cwmu).

## CWMU BUCK DEER HUNTS

**Permit fee:** Resident \$94, use the hunt number to apply. Nonresidents may only obtain a CWMU permit directly through the operator. For more information on the CWMU program, see page 69.

Hunt name	Hunt #	County	Public permits
5S	DB1333	Morgan	2
Antelope Creek	DB1202	Duchesne	1
Avintaquin Canyon	DB1203	Duchesne	1
Bally Watts	DB1204	Morgan	1
Bar J Ranch	DB1205	Sevier	1
Bear Mountain	DB1206	Sanpete	1
Bear Springs	DB1207	Weber	1
Big Piney Ranch	DB1335	Summit	1
Blackhawk	DB1208	Carbon	2
Blind Springs	DB1209	Box Elder	1
Blue Spring Hills	DB1211	Box Elder	1
Bluebell	DB1212	Cache	1
Boobe Hole	DB1213	Sevier	2
Buckhorn Ranch	DB1215	Duchesne/Wasatch	1
Castle Valley Outdoors	DB1216	Emery	1
Causey Spring	DB1217	Weber	1
Chimney Rock	DB1219	Morgan/Summit	2
Circle E Ranch	DB1253	Grand	1
Clear Creek	DB1328	Box Elder	1
Coldwater Ranch	DB1222	Cache	2
Cotton Thomas	DB1224	Box Elder	1
Deer Haven	DB1227	San Juan	2
Deseret	DB1228	Morgan/Rich/Weber	13
Dilly Ranch	DB1229	Box Elder	1
Double Cone	DB1325	Box Elder	1
Double R Ranch	DB1230	Wasatch	2
Dove Creek	DB1231	Box Elder	2

CWMU BUCK DEER  
**HUNT TABLES**

For details about individual properties, including public hunt dates and contact information, please visit [wildlife.utah.gov/cwmu](http://wildlife.utah.gov/cwmu).

**CWMU BUCK DEER HUNTS** (continued)

Hunt name	Hunt #	County	Public permits
Dry Creek	DB1341	Summit	1
Durst Mountain	DB1232	Morgan	2
East Fork Chalk Creek	DB1233	Summit	4
East Zion	DB1234	Kane	1
Engineer Springs	DB1236	Box Elder	1
Ensign Ranches	DB1237	Morgan/Rich/Summit	3
Faust Valley	DB1342	Box Elder	1
First Light	DB1336	Carbon	1
Folley Ridge	DB1238	Morgan	3
Fort Ranch	DB1239	Box Elder	1
George Creek	DB1240	Box Elder	1
Golden Spike	DB1241	Box Elder	1
Grass Valley/Clark Canyon	DB1242	Summit	14
Grazing Pasture	DB1243	Sevier	1
Green Canyon	DB1244	Cache	1
Guildersleeve	DB1245	Morgan	1
Hardscrabble	DB1246	Davis/Morgan/Salt Lake	2
Heaston East	DB1248	Salt Lake	2
Hiawatha	DB1249	Carbon	1
Indian Creek	DB1250	Box Elder	1
Indian Head	DB1251	Carbon/Duchesne/Utah	2
Ingham Peak	DB1252	Box Elder	3
Iron Spring	DB1330	Iron	1
Jacob's Creek	DB1317	Davis/Morgan	2
Johnson Mountain Ranch	DB1255	Sevier	1
Junction Valley	DB1256	Box Elder	5
Little Pole Canyon	DB1337	Wasatch	1
Little Red Creek	DB1258	Wasatch	1
Middle Ridge	DB1260	Rich	1

CWMU BUCK DEER  
**HUNT TABLES**

For details about individual properties, including public hunt dates and contact information, please visit [wildlife.utah.gov/cwmu](http://wildlife.utah.gov/cwmu).

**CWMU BUCK DEER HUNTS (continued)**

Hunt name	Hunt #	County	Public permits
Minnie Maud Ridge	DB1261	Carbon/Duchesne	5
Moon Ranch	DB1263	Duchesne	1
Mountain Meadow	DB1264	Box Elder	1
Mountain Sky Ranch	DB1327	Utah	1
Mountain Top	DB1265	Morgan/Summit	2
Mt Carmel	DB1266	Kane	3
North Peaks	DB1303	Box Elder	1
North Promontory	DB1269	Box Elder	1
Nucor West	DB1270	Box Elder	1
Oak Ranch	DB1271	Sevier	3
Old Woman Plateau	DB1272	Sevier	3
Pahvant Ensign	DB1322	Millard/Sevier	1
Park Valley Hereford	DB1273	Box Elder	6
Patmos Ridge	DB1274	Carbon	1
Pine Canyon	DB1275	Morgan	2
Pisgah Mountain	DB1286	Box Elder/Cache	2
Pocatello Valley	DB1277	Box Elder	1
Preston Nutter Ranch	DB1279	Carbon	1
Promontory Point	DB1280	Box Elder	1
Raft River	DB1331	Box Elder	2
Rattlesnake Pass	DB1281	Box Elder	2
Redd Ranches	DB1282	Grand/San Juan	2
Roan Cliffs	DB1283	Carbon	1
Rock House	DB1323	Juab	1
Rosette	DB1326	Box Elder	1
Sand Creek	DB1285	Duchesne	1
Scofield Canyons	DB1287	Carbon/Utah	1
Scofield West	DB1288	Carbon/Utah	2
Sharp Mountain	DB1289	Cache/Weber	2

CWMU BUCK DEER  
**HUNT TABLES**

*For details about individual properties, including public hunt dates and contact information, please visit [wildlife.utah.gov/cwmu](http://wildlife.utah.gov/cwmu).*

**CWMU BUCK DEER HUNTS (continued)**

Hunt name	Hunt #	County	Public permits
Skull Crack	DB1290	Morgan/Weber	1
Skull Valley South	DB1291	Tooele	1
Soldier Summit	DB1292	Carbon/Utah/Wasatch	2
South Canyon	DB1293	Box Elder/Cache	1
Spring Creek Acres	DB1294	Cache	1
Spring Creek/Dodge	DB1295	San Juan	6
Strawberry Ridge	DB1298	Cache/Rich	1
Summit Point	DB1299	San Juan	3
Thatcher Mountain	DB1300	Box Elder	1
The Dirty Dozen	DB1351	Uintah	2
The Rose of Snowville	DB1347	Box Elder	2
Three C	DB1301	Wasatch	2
Tunnel Hollow	DB1259	Morgan/Summit	1
Two Bear	DB1304	Summit	1
Wallsburg	DB1305	Wasatch	1
Washakie	DB1306	Box Elder	1
Weber Florence Creek/Stillman Creek	DB1349	Summit	9
West Hills	DB1308	Box Elder	2
West Ridge	DB1332	Carbon	5
West Willow Creek Ranch	DB1309	Uintah	5
White's Valley	DB1310	Box Elder	1
Woodruff Creek South	DB1312	Rich	1

# CWMU ANY BULL ELK HUNT TABLES

For details about individual properties, including public hunt dates and contact information, please visit [wildlife.utah.gov/cwmu](http://wildlife.utah.gov/cwmu).

## CWMU ANY BULL ELK HUNTS

**Permit fee:** Resident \$314, use the hunt number to apply. Nonresidents may only obtain a CWMU permit directly through the operator. For more information on the CWMU program, see page 69.

Hunt name	Hunt #	County	Public permits
Alton	EB3500	Kane	1
Avintaquin Canyon	EB3608	Duchesne	1
Bar J Ranch	EB3501	Sevier	2
Bear Mountain	EB3502	Sanpete	1
Bear Springs	EB3503	Morgan/Weber	1
Blackhawk	EB3504	Carbon	1
Boobe Hole	EB3505	Sevier	2
Cactus Ranch LLC	EB3545	Box Elder	3
Causey Spring	EB3506	Weber	1
Chimney Rock	EB3508	Morgan/Summit	2
Circle E Ranch	EB3529	Grand	2
Coldwater Ranch	EB3509	Cache	3
Cotton Thomas	EB3511	Box Elder	1
Deseret	EB3514	Morgan/Rich/Weber	19
Double Cone	EB3515	Box Elder	1
Double R Ranch	EB3604	Wasatch	1
Durst Mountain	EB3516	Morgan	3
East Fork Chalk Creek	EB3517	Summit	3
Ensign Ranches	EB3519	Morgan/Rich/Summit	6
Folley Ridge	EB3520	Morgan	2
Grass Valley/Clark Canyon	EB3521	Summit	10
Grazing Pasture	EB3522	Sevier	1
Guildersleeve	EB3523	Morgan	2
Hardscrabble	EB3524	Davis/Morgan/Salt Lake	2
Heaston East	EB3525	Salt Lake	2
Hiawatha	EB3526	Carbon	2

CWMU ANY BULL ELK  
**HUNT TABLES**

*For details about individual properties, including public hunt dates and contact information, please visit [wildlife.utah.gov/cwmu](http://wildlife.utah.gov/cwmu).*

**CWMU ANY BULL ELK HUNTS (continued)**

Hunt name	Hunt #	County	Public permits
Indian Head	EB3527	Carbon/Duchesne/Utah	2
Ingham Peak	EB3528	Box Elder	1
Jacob's Creek	EB3530	Davis/Morgan	2
Johnson Mountain Ranch	EB3531	Sevier	2
Jump Creek	EB3532	Carbon	1
Junction Valley	EB3533	Box Elder	1
Little Pole Canyon	EB3613	Wasatch	1
Little Red Creek	EB3534	Wasatch	2
Minnie Maud Ridge	EB3536	Carbon/Duchesne	5
Moon Ranch	EB3538	Duchesne	1
Mountain Sky Ranch	EB3606	Utah	1
North Peaks	EB3565	Box Elder	1
Old Woman Plateau	EB3540	Sevier	2
Pahvant Ensign	EB3603	Millard/Sevier	1
Patmos Ridge	EB3541	Carbon	1
Preston Nutter Ranch	EB3543	Carbon	3
Redd Ranches	EB3544	Grand/San Juan	2
Roan Cliffs	EB3546	Carbon	1
Sand Creek	EB3547	Duchesne	1
Scofield Canyons	EB3548	Carbon/Utah	1
Scofield East	EB3549	Carbon	1
Scofield West	EB3550	Carbon/Utah	2
Sharp Mountain	EB3610	Cache	2
SJ Ranch	EB3551	Cache	1
Skull Crack	EB3552	Morgan/Weber	1
Soldier Summit	EB3553	Carbon/Utah/Wasatch	2
South Canyon	EB3554	Box Elder/Cache	1
Spring Creek/Dodge	EB3555	San Juan	2

## CWMU ANY BULL ELK HUNT TABLES

For details about individual properties, including public hunt dates and contact information, please visit [wildlife.utah.gov/cwmu](http://wildlife.utah.gov/cwmu).

### CWMU ANY BULL ELK HUNTS (continued)

Hunt name	Hunt #	County	Public permits
Strawberry Ridge	EB3557	Cache/Rich	2
Summit Point	EB3558	San Juan	1
The Dirty Dozen	EB3620	Uintah	1
Three C	EB3559	Wasatch	2
Tunnel Hollow	EB3614	Morgan/Summit	1
Wallsburg	EB3562	Wasatch	1
Weber Florence Creek/Stillman Creek	EB3619	Summit	10
West Ridge	EB3611	Carbon	2
West Willow Creek Ranch	EB3607	Uintah	1
Woodruff Creek South	EB3564	Rich	2

For details about individual properties, including public hunt dates and contact information, please visit [wildlife.utah.gov/cwmu](http://wildlife.utah.gov/cwmu).

**CWMU BUCK PRONGHORN HUNTS**

**Permit fee:** Resident \$63, use the hunt number to apply. Nonresidents may only obtain a CWMU permit directly through the operator. For more information on the CWMU program, see page 69.

Hunt name	Hunt #	County	Public permits
Allen Ranch	PB5325	Utah	2
Antelope Creek	PB5300	Duchesne	4
Castle Valley Outdoors	PB5338	Emery	1
Cedar Springs	PB5326	Box Elder	1
Cottonwood Ridge	PB5327	Duchesne	4
Deseret	PB5302	Morgan/Rich/Weber	29
George Creek	PB5330	Box Elder	1
Green River Flat	PB5345	Grand	2
Heist	PB5337	Beaver/Iron	2
Iron Spring	PB5339	Iron	1
Junction Valley	PB5346	Box Elder	1
Pahvant Ensign	PB5328	Millard/Sevier	3
Park Valley	PB5305	Box Elder	1
Rabbit Creek	PB5306	Rich	1
Salt Wells	PB5342	Box Elder	1
Skull Valley South	PB5309	Tooele	2
Snowville Flat	PB5329	Box Elder	2
The Rose of Snowville	PB5311	Box Elder	3
TL Bar Ranch	PB5312	Box Elder/Toole	1
Westlake	PB5314	Utah	2
Zane	PB5315	Iron	2

CWMU BULL MOOSE  
**HUNT TABLES**

*For details about individual properties, including public hunt dates and contact information, please visit [wildlife.utah.gov/cwmu](http://wildlife.utah.gov/cwmu).*

**CWMU BULL MOOSE HUNTS**

**Permit fee:** Resident \$454, use the hunt number to apply. Nonresidents may only obtain a CWMU permit directly through the operator. For more information on the CWMU program, see page 69.

Hunt name	Hunt #	County	Public permits
Beaver Hollow (new)	MB6201	Morgan	1
Causey Spring	MB6202	Weber	1
Deseret	MB6206	Morgan/Rich/Weber	1
East Fork Chalk Creek	MB6208	Summit	2
Grass Valley/Clark Canyon	MB6211	Summit	4
Hardscrabble	MB6251	Davis/Morgan/Salt Lake	1
Jacob's Creek	MB6258	Morgan	1
Junction Valley	MB6262	Box Elder	1
Little Pole Canyon	MB6265	Wasatch	1
Skull Crack	MB6219	Morgan/Weber	2
Strawberry Ridge	MB6222	Cache/Rich	1
Weber Florence Creek/Stillman Creek	MB6266	Summit	3
Woodruff Creek South	MB6256	Rich	1

# DEFINITIONS

*Utah Code § 23A-1-101 and Utah Admin. Rules R657-5-2, R657-5-47, R657-37 and R657-67*

The following definitions explain terms used in this guidebook. The *2026 Utah Big Game Field Regulations Guidebook* (available in June 2026) will contain additional definitions that focus on hunting, harvesting and possessing big game.

**Antlerless deer** means a deer without antlers or with antlers five inches or shorter.

**Antlerless elk** means an elk without antlers or with antlers five inches or shorter.

**Antlerless moose** means a moose with antlers shorter than its ears.

**Any legal weapon** means any weapon listed at [wildlife.utah.gov/R657-5](http://wildlife.utah.gov/R657-5) (see R657-5-8 through R657-5-12) or in the Firearms and Archery Equipment section of the *2026 Utah Big Game Field Regulations Guidebook* (available in June 2026).

**Big game** means species of hoofed protected wildlife.

**Buck deer** means a deer with antlers longer than five inches.

**Buck pronghorn** means a pronghorn with horns longer than five inches.

**Bull elk** means an elk with antlers longer than five inches.

**Bull moose** means a moose with antlers longer than its ears.

**Cactus buck** means a buck deer with velvet covering at least 50 percent of the antlers during the season dates established by the Wildlife Board for a cactus buck deer hunt.

**Certificate of registration** means a document issued under any rule or proclamation of the Wildlife Board granting authority to engage in activities not covered by a license, permit or tag.

**CWMU** means Cooperative Wildlife Management Unit.

**Domicile** means the place:

- where an individual has a fixed permanent home and principal establishment;
- to which the individual if absent, intends to return and has an actual plan, method, and means to return to the individual's domicile within six months;
- in which the individual and the individual's family voluntarily reside, not for a special or temporary purpose, but with the intention of making a permanent home; and
- is a place where the individual resides for the majority of the individual's time.

To create a new domicile an individual must:

- abandon the old domicile; and
- be able to prove that a new domicile has been established.

**Draw lock** means a mechanical device used to hold and support the draw weight of a conventional or compound bow at any increment of draw, until released by the archer using a trigger mechanism and safety attached to the device.

**Drone** means an autonomously controlled, aerial vehicle of any size or configuration that is capable of controlled flight without a human pilot aboard.

**Handgun-archery-muzzleloader-shotgun-straight walled rifle-only hunt (HAMSS hunt)** means a limited-entry hunt with very specialized weapon requirements. Before you apply for one of these hunts, see *R657-5-47* to confirm whether the weapon you plan to use is legal for the hunt.

**Hunter's choice** means either sex may be taken.

**Hunting** means to take or pursue a reptile, amphibian, bird or mammal by any means.

**Hunting mentor** means a resident or nonresident individual possessing a valid permit issued by the Division to take protected wildlife in Utah and who is 21 years of age or older at the time of application for the Hunter Mentoring Program.

**Limited-entry hunt** means any hunt that is identified as limited-entry and listed in the hunt table of this guidebook, and that does not include general or once-in-a-lifetime hunts.

**Limited-entry permit** means any permit obtained for a limited-entry hunt by any means, including multiseason premium limited-entry permits, premium limited-entry permits, multiseason limited-entry permits, limited-entry permits, cactus buck permits, management buck permits, handgun-archery-muzzleloader-shotgun-only permits, conservation permits, expo permits, sportsman permits, CWMU permits and limited-entry landowner permits.

**Night-vision device** means anything that enhances visible and non-visible light and includes the use of night-vision devices, thermal-imaging devices, infrared-imaged devices and other electronic devices that enhance the visible and non-visible light spectrum. Trail cameras are not a night-vision device.

**Nonresident** means a person who does not qualify as a resident.

**Once-in-a-lifetime hunt** means any hunt that is identified as once-in-a-lifetime and listed in the hunt table of this guidebook, and that does not include general or limited-entry hunts.

**Once-in-a-lifetime permit** means any permit obtained for a once-in-a-lifetime hunt by any means, including conservation permits, expo permits, sportsman permits, CWMU permits and limited-entry landowner permits.

**Permit** means a document, including a stamp, which grants authority to engage in specific activities under the Wildlife Resources Code or a rule or proclamation of the Wildlife Board.

**Possession** means actual or constructive possession.

**Protected data** means records classified as protected under the Government Records Access and Management Act, *Utah Code Ann. §63G-2-305*.

**Qualifying minor** means a Utah resident who is under 18 at the time of application for the Mentor Program and who is otherwise eligible to lawfully hunt.

**Ram** means a male desert bighorn sheep or Rocky Mountain bighorn sheep older than one year of age.

**Resident** means a person has been domiciled (fixed permanent home and principal establishment) in Utah for six consecutive months immediately preceding the purchase of a license or application of a license, permit, or tag and does not claim residency for hunting, fishing or trapping in any other state or country.

An individual retains Utah residency if he or she leaves Utah to serve in the armed forces of the United States, or for religious or educational purposes, and **does not** claim residency for hunting, fishing or trapping in any other state or country.

Members of the armed forces of the United States and dependents are residents as of the date the member reports for duty under assigned orders in Utah, if:

- The member is **not** on temporary duty in Utah and **does not** claim residency for hunting, fishing or trapping in any other state or country.
- The member presents a copy of his or her assignment orders to a division office to verify the member's qualification as a resident.

A nonresident attending an institution of higher learning in Utah as a full-time student may qualify as a resident if the student has been present in Utah for 60 consecutive days immediately preceding the purchase of the license or permit and **does not** claim residency for hunting, fishing or trapping in any other state or country.

A Utah resident license or permit is invalid if a resident license for hunting, fishing or trapping is purchased in any other state or country.

An individual **does not** qualify as a resident if he or she is an absentee landowner paying property tax on land in Utah.

**Restricted weapons hunt** means a limited-entry or general-season hunt with very specialized weapon requirements for archery equipment, muzzleloaders and rifles. Refer to *R657-5-48* for specific requirements.

**Shed antlers** are antlers that a big game animal has dropped naturally as part of its annual lifecycle.

**Shed horns** are the sheaths from the horns of a pronghorn that the animal has dropped naturally as part of its annual lifecycle. Pronghorn are the only big game animals that shed their horns.

**Sell** means to offer or possess for sale, barter, exchange or trade, or the act of selling, bartering, exchanging or trading.

**Spike bull** means a bull elk which has at least one antler beam with no branching above the ears. Branched means a projection on an antler longer than one inch, measured from its base to its tip.

**Tag** means a card, label or other identification device issued for attachment to the carcass of protected wildlife.

**Take** means to:

- Hunt, pursue, harass, catch, capture, possess, gather, angle, seine, trap or kill any protected wildlife; or
- Attempt any of the above actions.

**Trail camera** means a device that is not held or manually operated by a person and is used to capture images, video, or location data of wildlife using heat, or motion to trigger the device.

**Wildlife document** means a permit to hunt protected wildlife or division-issued authorization to share such a permit.



1. Check the **DWR wildlife calendar** for upcoming meeting dates and agenda topics.
2. Review **proposals** on the division website or our YouTube channel.
3. Attend a **public meeting** in your region to share comments or **submit feedback online** during the public comment period.

The **Utah Wildlife Board** creates wildlife-related rules for the state. The board considers recommendations from **The Division of Wildlife Resources** and the five **Regional Advisory Councils**. Each **RAC** depends on **public feedback** for guidance on agenda items and their recommendations for the board.

Visit [wildlife.utah.gov/getting-involved](https://wildlife.utah.gov/getting-involved) to learn more. 🗺️



*The Utah Wildlife Board meets throughout the year at the Eccles Wildlife Education Center at Farmington Bay.*