

# UTAH FURBEARER ANNUAL REPORT 2005-2006



Publication No. 07-04



# UTAH FURBEARER ANNUAL REPORT 2005–2006

Prepared by:

**Kent R. Hersey**  
Biometrician

and

**Kevin Bunnell**  
Mammals Program Coordinator

Publication No. 07-04

Annual Performance Report for Federal Aid Project W-65-M-54

State of Utah  
Department of Natural Resources  
DIVISION OF WILDLIFE RESOURCES

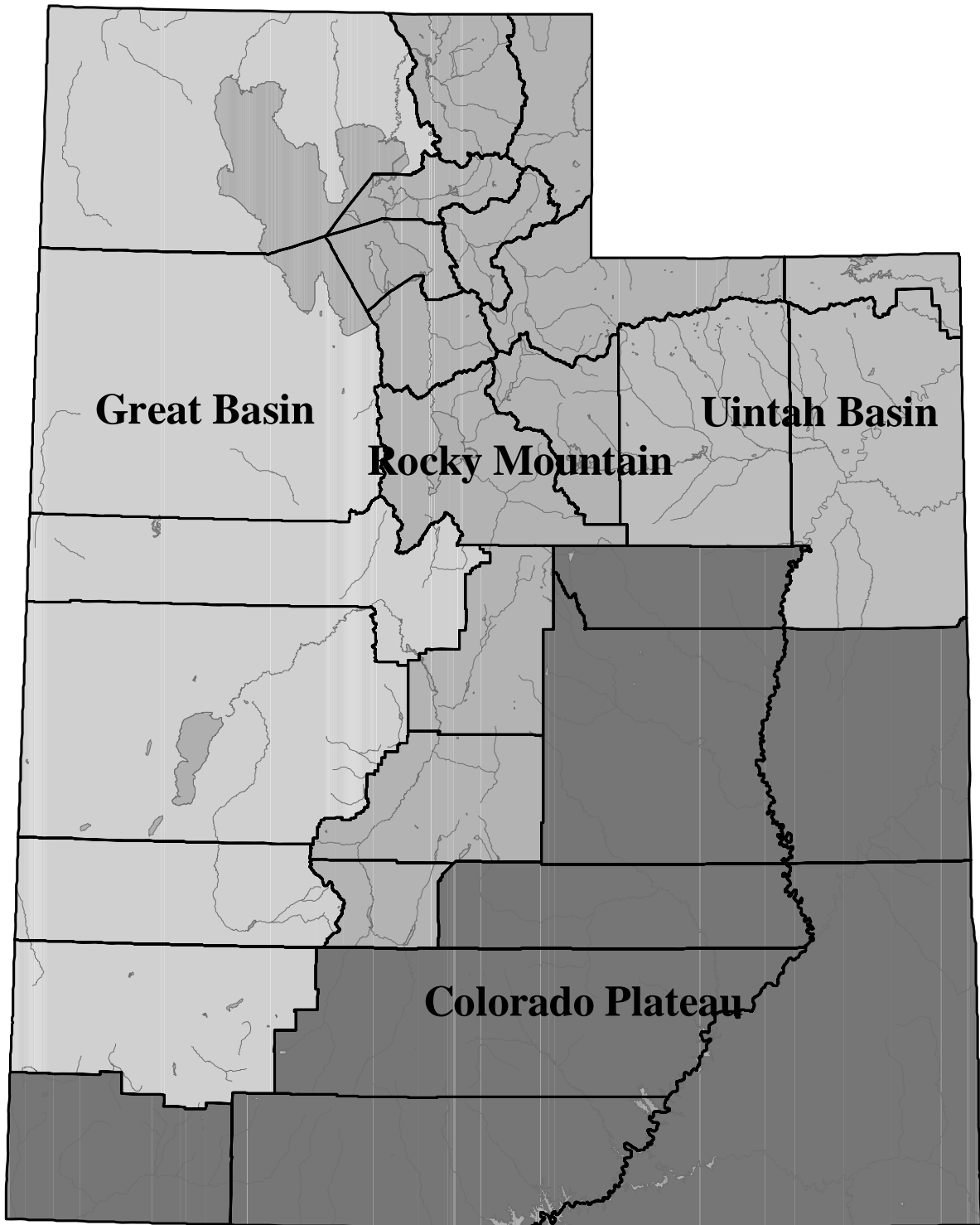
An Equal Opportunity Employer

**James F. Karpowitz**  
Director

## TABLE OF CONTENTS

Utah furbearer management units.....	1
Definitions.....	2
Introduction.....	3
Methods.....	3
Results.....	5
Harvest by species.....	12
Bobcat .....	13
Coyote .....	23
Raccoon.....	28
Beaver .....	33
Red Fox .....	36
Gray Fox .....	39
Kit Fox .....	41
Badger .....	43
Marten .....	45
Mink.....	47
Muskrat .....	49
Ringtail.....	51
Skunk .....	53
Weasel.....	55

**UTAH FURBEARER MANAGEMENT UNITS**



## DEFINITIONS

**Incidental take:** Furbearers harvested in traps that were intended for a different furbearer species.

**Trap year:** Year during which a particular trapping season ended. For example, for simplification in figures, trap year 2006 corresponds to the 2005–2006 furbearer season as outlined in the 2005–2006 Furbearer Proclamation.

**Total trappers:** Number of furbearer license holders who trapped furbearers during a particular trap year. License holders who took furbearers by means other than trapping, including shooting or with the aid of dogs, are included in this figure except for bobcat, coyote, and raccoon.

**Total harvest:** Number of furbearers of a particular species taken by means of trapping and hunting by furbearer license holders. This figure does not include harvest of unprotected wildlife, such as coyote, muskrat, red fox, raccoon, or striped skunk, by persons who did not purchase a furbearer license, nor does it include harvest of furbearers taken for creating a nuisance or causing damage.

**Total set-days:** Number of traps set during the furbearer season for the trapping of a particular species, multiplied by the number of days these traps were in the field. This figure pertains only to trapping, and does not include days afield by furbearer hunters or pursuers.

**Pelt price:** Average price paid for pelts of a specific furbearer species harvested in Utah, obtained mainly from a summary of the prices bid at the Utah Trappers Association fur auction, as well as prices from a survey of registered furdealers buying pelts harvested in Utah.

**Wildlife Services harvest (coyote only):** Number of coyotes killed by USDA-APHIS Wildlife Services in a particular year. Wildlife Services yearly harvest summaries apply to their fiscal year, which begins October 1 and ends September 30, although most harvest takes place during spring.

## INTRODUCTION

The furbearer harvest report presents furbearer harvest and trapper/hunter effort trends across the state of Utah, based on data collected from furbearer trappers and hunters. This report represents the furbearer portion of the Annual Performance Report for Federal Aid Project W-65-M, segment 54, grant agreement period October 1, 2005 through September 30, 2006. That Federal Aid project covers the 2005–2006 trapping season. Additionally, this report presents statewide trends since the early 1980s and population trend indicators for bobcats as well as the estimated economic value of Utah’s furbearer harvest each year. Furbearer harvest and trapper/hunter effort may be more driven by pelt price than by availability, so annual fur harvest should not be used as the sole means to assess/project population sizes.

### Bag Limits and Season Dates

Furbearers include badger, beaver, bobcat, gray fox, kit fox, mink, marten, ringtail, spotted skunk, and weasel, and a furbearer license is required to harvest any of these species, during the specified harvest season. An additional permit is required to harvest bobcat or marten. Coyote, muskrat, red fox, raccoon, and striped skunk are not under the jurisdiction of the Division, and/or are unprotected. Those species may be taken year-round without a license; therefore, results presented in this report do not include harvest by persons who did not purchase a furbearer license. It is prohibited to take black-footed ferret, fisher, lynx, otter, wolf, and wolverine. There are no bag limits for furbearers, except bobcats.

Furbearer season dates and bobcat possession limit, Utah 2005–2006 season.

Bobcat possession limit	Season dates			
	Coyote, Red fox, Muskrat, Raccoon, Striped skunk	Badger, Kit fox, Gray fox, Ringtail, Spotted skunk, Weasel, Marten	Beaver and Mink	Bobcat
6	Year-round	10/08/05–2/12/06	10/08/05–4/16/06	11/16/05–2/12/06

## METHODS

### Furbearer Harvest Survey

For the 2005–2006 furbearer season, the Utah Division of Wildlife Resources switched from a mail questionnaire to a telephone survey. Telephone surveys are thought to be better than mail questionnaire because they achieve a more random sample, thus, reducing the response bias caused by trappers who did not harvest animals not returning their questionnaires. Telephone surveys also allow you contact a smaller number of license holders to achieve the same level of accuracy. The accuracy of that phone survey is dependent upon the following assumptions: (1) a random sample was achieved (i.e. there was no response bias by those who harvested successfully versus those who did not), (2) respondents recorded or remembered data accurately and did not guess or lie, and (3) respondents clearly understood the questions.

For the telephone survey, a random sample with a target sample size of at least 250 license holders (15–20% of all license holders) was used to determine furbearer harvest and effort. The results of those surveys were projected for all license holders by dividing the total number of furbearer licensees for that trap year by the number of telephone survey responses. For bobcats, the total number of bobcat permits surveyed was determined, and this number was projected by the total number of bobcat permits sold. For bobcats and martens, it was required by proclamation that the pelts of animals harvested in Utah be brought to a Division office or officer to have a permanent tag attached and to surrender the lower jaw. Bobcat and marten harvest data presented in this report, such as county of kill and sex of harvest, were collected at this time; as such, this information is not projected. Additional information on bobcat harvest, such as harvest effort by method, number of sets, and number of days was determined by telephone survey. Due to the small number of marten trappers in Utah, we did not attempt to survey marten trappers. Instead, since a separate permit is required to trap marten, we assumed that all those who purchased a marten permit attempted to trap marten.

In an effort to obtain information on how many furbearers of a given species were taken incidentally, furbearer trappers were asked the question “Did you harvest any (species) in traps that were set for a different species, and, if so, how many?” Because survey respondents gave information on number of traps set and number of days spent trapping for furbearers taken incidentally, these furbearers were include in the total harvest and harvest effort statistics.

## **Data Analysis**

When dealing with survey data, it is not uncommon to have outliers (i.e., data that do not fall within realistic values). A repeated problem in the furbearer survey was having a trapper report a high harvest with little trap effort (i.e., 10 furbearers harvest with 1 trap set for 1 day). For this situation we assumed that the total harvest was reported correctly, but the trapping effort was either reported or recorded erroneously. By doing so, these data records were included in the total statewide harvest of a furbearer species, but the total statewide number of traps set, trapping days and set-days could not be determined. To obtain estimates of furbearers/trapper, set-days/furbearer, and furbearers/1000 set-days, we used the remaining data points, excluding outliers.

Because some furbearer species in Utah are rare or not highly sought after by trappers, it is not possible to achieve sufficient sample sizes for these species to make valid statistical inferences. Although the trends for statewide harvest and effort are still valid, at the county level, the harvest and effort estimates have low precision and are likely inaccurate. As such, results by county are only reported for species with a sample size  $\geq 20$ .

## **Bobcat Age Determination and Other Data Methods**

To determine age structure of the bobcat harvest, a canine tooth from each bobcat jaw was sectioned, and aged using cementum annuli by Matson’s Lab in Milltown, Montana. Survival rates were estimated using the Chapman-Robson estimator. Pelt prices were obtained mainly from a summary of the prices bid at the Utah Trappers Association fur auction, as well as from a survey of registered furdealers buying pelts harvested in Utah.

## **RESULTS**

### **License Sales and General Survey Results**

Although furbearer license sales dropped from 1895 in 2004–2005 to 1688 in 2005–2006, sales still remained above the average of 1460. The percentage of license holders who bought a furbearer license but did attempt to harvest furbearers during the season increased sharply from 18.2% in 2004–2005 season to 27.7% in 2005–2006. That increase was likely due to the switch from a mail questionnaire to a telephone survey, which is less biased, rather than an actual increase in the number of trappers not afield.

### **Furbearer Harvest Statistics**

Total estimated furbearer harvest for 2005–2006 was 18,010, which was down significantly from previous years. The low estimate for muskrat harvest contributed most to decline in total furbearer harvest, but harvest of badger, beaver, coyote, gray fox, kit fox, red fox, mink, raccoon, ringtail, and skunk were also down. Bobcat, marten, and weasel harvest was up from previous years. The number of trappers attempting to harvest a given furbearer species was down for all species except weasel.

### **Pelt Price and Economic Value**

The estimated economic value of Utah's furbearer harvest was more than \$1.3 million in 2006. This was largely driven by the high bobcat harvest and bobcat pelt price, which was over \$1 million in revenue alone. Coyote and red fox also contributed largely to the total economic value.



Summary of furbearer license sales and survey responses, Utah 1983–2006.

Trap year	Furbearer licenses sold			License holders sampled		Projection factor	% license holders not afield
	Resident	Nonresident	Total	Total	Percent (%)		
1982–1983	—	—	1325	664	50.1	—	—
1983–1984	—	—	1367	616	45.1	—	—
1984–1985	—	—	1491	806	54.1	—	—
1985–1986	—	—	1424	680	47.8	—	—
1986–1987	—	—	1342	585	43.6	—	—
1987–1988	—	—	1576	731	46.4	—	—
1988–1989	—	—	1318	721	54.7	—	—
1989–1990	—	—	1084	597	55.1	—	—
1990–1991	—	—	949	513	54.1	—	30.0
1991–1992	—	—	1210	689	56.9	—	2.2
1992–1993	—	—	1426	857	60.1	—	16.0
1993–1994	—	—	1315	—	—	—	—
1994–1995	—	—	1287	585	45.5	—	7.0
1995–1996	—	—	1240	683	55.1	—	21.2
1996–1997	—	—	1131	606	53.6	—	25.4
1997–1998	—	—	1190	498	41.8	—	19.5
1998–1999	—	—	1191	395	33.2	—	19.8
1999–2000	1172	39	1211	458	37.8	2.64	11.6
2000–2001	1204	20	1224	420	34.3	2.91	12.4
2001–2002	956	21	977	302	30.9	3.24	11.6
2002–2003	1409	40	1449	514	35.5	2.82	16.3
2003–2004	1729	47	1776	597	33.6	2.97	16.9
2004–2005	1830	65	1895	615	32.5	3.08	18.2
2005–2006	1631	57	1688	260	15.4	6.49	27.7
Average	1419	41	1460	582	39.9	2.51	17.0

\*Starting in 2006, a telephone survey replaced the mail questionnaire.

Statewide furbearer harvest estimates by species, Utah 1997–2006.

Species	Trap year										Average 1997–2006
	1997	1998	1999	2000	2001	2002	2003	2004	2005	2006	
Badger	222	271	318	433	450	275	541	453	432	120	352
Beaver	1299	2896	2950	1830	1992	1689	1720	1781	2664	2239	2106
Bobcat	866	1234	2092	1430	2008	1866	2176	2027	1954	2926	1858
Coyote	4017	3228	4337	3510	4966	4354	5446	6660	7173	4229	4792
Gray fox	367	389	870	925	1159	1326	1942	1749	942	603	1027
Kit fox	162	96	168	183	161	171	302	638	259	183	232
Red fox	4274	3744	5600	4900	5330	3192	4399	4639	4674	1874	4263
Marten	2	0	6	0	6	22	5	0	0	12	5
Mink	269	337	345	419	468	284	268	673	317	222	360
Muskrat	23,371	26,907	21,895	21,086	10,376	14,979	6334	10,777	15,016	824	15,157
Raccoon	4228	4989	7765	5317	5678	3785	4001	5634	6405	3298	5110
Ringtail	46	57	138	101	118	101	115	96	127	103	100
Skunk (total)	1726	2890	3227	2730	3857	1798	1732	2305	4264	1187	2572
Striped skunk	—	—	—	—	—	—	—	—	—	1043	1043
Spotted skunk	—	—	—	—	—	—	—	—	—	144	144
Weasel	13	28	33	66	155	13	3	58	85	190	64
Total	40,862	47,066	49,744	42,930	36,724	33,855	28,984	37,490	44,312	18,010	37,998
Total minus muskrat	17,491	20,159	27,849	21,844	26,348	18,876	22,650	26,713	29,296	17,186	22,841

\*Prior to the 2005–2006 trap season, spotted skunk and striped skunk harvest were not split out.

\*\*Harvest numbers for bobcat and marten were obtained when pelts were affixed with permanent possession tags; as such, total harvest numbers are not projections.

Statewide furbearer trapping harvest statistics by species, Utah 2006.

Species	Trappers afield	Trap harvest	Set-days	Furbearers / trapper	Set-days / furbearer	Furbearers / 1000 set-days	Pelt price (\$)
Badger	70	120	38,838	1.7	323.7	3.1	15.02
Beaver	130	2239	66,026	17.2	29.5	33.9	17.75
Bobcat	979	2625	757,380	2.7	288.5	3.5	358.56
Coyote	256	1190	243,091	4.6	204.3	4.9	30.45
Gray fox	98	603	51,051	6.2	84.7	11.8	24.15
Kit fox	40	183	—	4.6	15.2	65.6	10.92
Red fox	406	1874	—	4.6	196.3	5.1	24.35
Marten	16	12	—	—	—	—	—
Mink	34	222	4888	6.5	22.0	45.4	9.97
Muskrat	41	824	—	20.1	65.5	15.3	3.97
Raccoon	158	1761	432,358	11.1	245.5	4.1	9.83
Ringtail	19	103	8115	5.4	78.8	12.7	9.31
Striped skunk	95	1043	82,551	11.0	79.1	12.6	5.37
Spotted skunk	34	144	6797	4.2	47.2	21.2	—
Weasel	41	190	8172	4.6	43.0	23.3	—
Total	1221*	13,133	—	—	—	—	—

\*Total trappers afield for the entire season.

Statewide furbearer non-trapping harvest by species, Utah 2006.

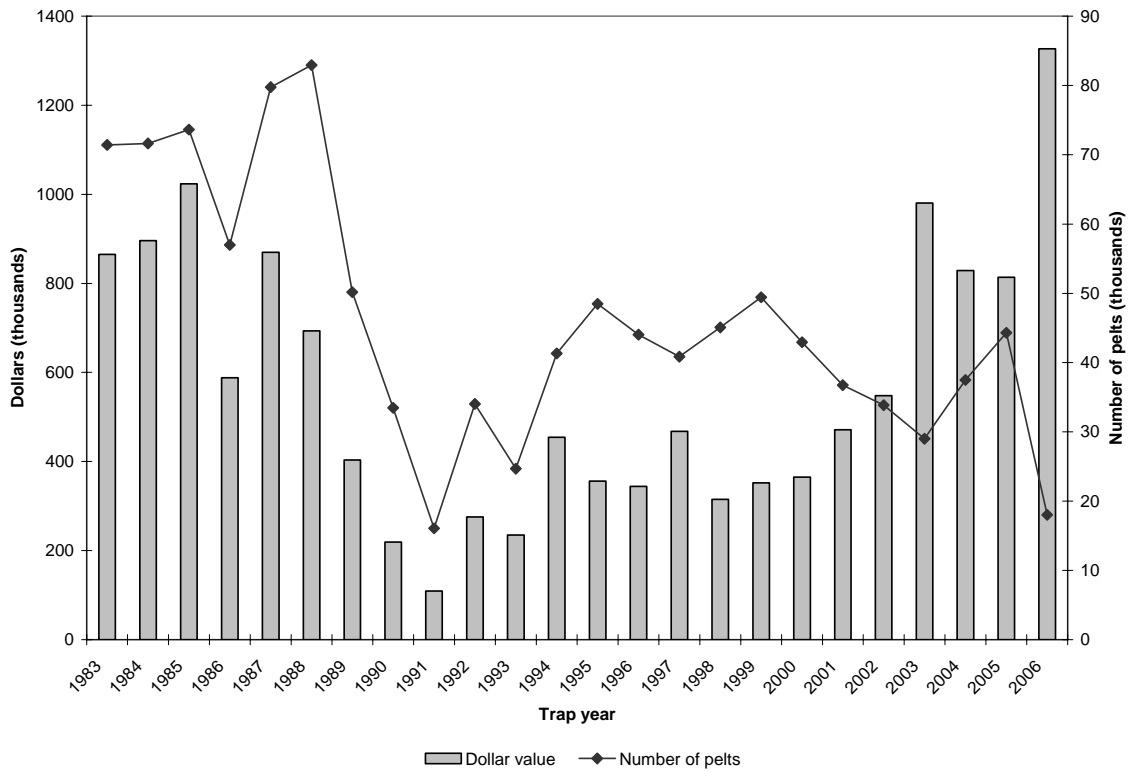
Species	Hunters afield	Non-trap harvest	Hunting days	Furbearers / hunter	Days / furbearer
Bobcat	612	301	8194	0.5	27.2
Coyote	440	3039	10,024	6.9	3.3
Raccoon	85	1537	3081	18.1	2.0
Total	1137	4877	21,299	—	—

Number of furbearers harvested in traps set for other species, Utah 2006.

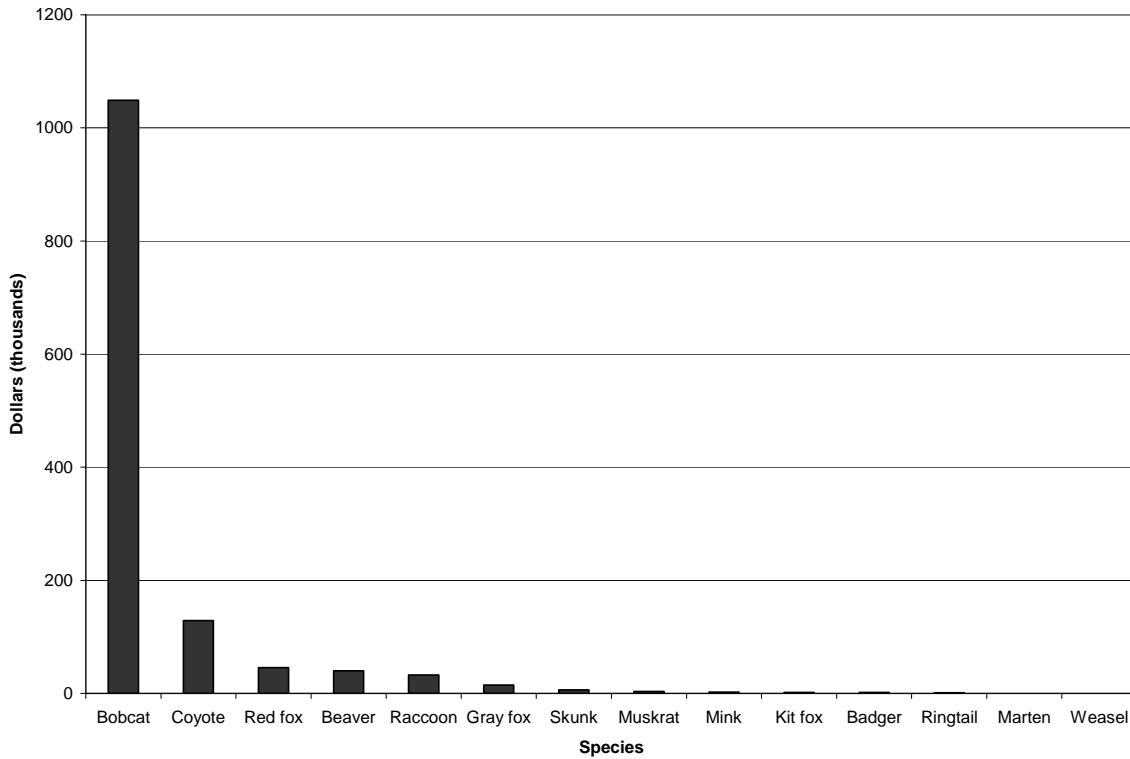
Species	Incidental harvest	Total harvest	% incidental harvest
Badger	59	120	49.2
Beaver	227	2239	10.1
Bobcat	0	2625	0.0
Coyote	328	1190	27.6
Gray fox	314	603	52.1
Kit fox	0	183	0.0
Red fox	713	1874	38.0
Mink	0	222	0.0
Muskrat	0	824	0.0
Raccoon	282	1761	16.0
Ringtail	32	103	31.1
Striped skunk	924	1043	88.6
Spotted skunk	144	144	100.0
Weasel	7	190	3.7
Total	3030	13,121	23.1

\*Incidental harvest is defined as species caught in traps intended for other species.

Estimated economic value of Utah's furbearer harvest, Utah 1983–2006.



Proportional economic value of Utah's furbearer harvest by species, Utah 2006.



Economic value (in dollars) of furbearer species in Utah's annual furbearer harvest, Utah 1983–2006.

Trap year	Economic value (\$)														Total economic value (\$)
	Badger	Beaver	Bobcat	Coyote	Gray fox	Kit fox	Red fox	Marten	Mink	Muskrat	Raccoon	Ringtail	Skunk**	Weasel	
1982–1983	5945	20,418	434,340	203,240	37,352	7244	16,391	10	4394	119,096	10,526	1430	4620	59	865,064
1983–1984	4794	25,211	498,960	152,358	34,353	8369	14,869	1680	3460	136,033	11,105	1497	3597	0	896,285
1984–1985	6794	43,796	511,464	193,809	48,147	7272	32,220	288	4948	133,589	18,208	794	22,126	56	1,023,511
1985–1986	1964	47,463	301,410	95,322	21,147	4568	21,386	2783	5022	72,903	13,751	433	0	0	588,152
1986–1987	3239	93,684	316,416	166,417	36,848	5415	49,262	565	8802	157,919	30,439	746	0	185	869,938
1987–1988	2772	69,184	250,635	107,590	35,779	5751	34,765	2000	12,703	144,058	24,645	643	2524	250	693,300
1988–1989	1943	27,264	230,282	27,104	14,837	4488	16,070	310	9129	46,760	23,932	1060	290	23	403,492
1989–1990	1749	40,991	85,986	28,913	5825	1164	17,550	0	7018	15,039	14,242	350	387	8	219,223
1990–1991	1250	10,066	45,849	20,892	2060	869	12,636	0	3437	6463	5375	347	194	9	109,446
1991–1992	2015	13,338	100,672	65,100	2762	520	39,194	0	4924	31,275	10,729	708	4148	6	275,390
1992–1993	2308	7399	105,390	57,740	2988	821	31,635	0	2850	13,715	4757	425	4887	8	234,924
1993–1994	1709	16,888	148,962	128,971	8244	1412	74,511	0	3970	42,502	15,768	259	10,768	158	454,120
1994–1995	4555	32,270	90,536	65,890	7417	3425	67,159	0	2933	49,362	18,332	1019	13,359	20	356,277
1995–1996	2904	20,502	71,241	67,722	8818	1363	74,399	0	5502	54,883	23,516	947	11,622	613	344,032
1996–1997	2888	27,474	127,995	75,238	4257	1097	74,710	0	2946	83,902	56,444	537	10,356	96	467,939
1997–1998	1786	39,328	75,138	34,862	3019	336	42,345	0	1958	54,083	49,790	170	11,878	85	314,778
1998–1999	5393	27,642	116,859	46,840	6055	1228	50,120	43	2453	37,878	38,437	575	18,297	182	352,002
1999–2000	5646	20,093	118,175	67,181	6124	531	69,531	0	2543	21,086	30,147	710	23,205	—	364,973
2000–2001	7731	20,557	187,868	71,461	9272	987	90,184	—	2303	16,394	29,298	708	33,517	1318	471,598
2001–2002	4290	18,326	275,534	70,404	15,355	1833	78,140	—	1477	38,945	30,431	1039	12,208	—	547,983
2002–2003	7428	16,288	588,238	177,649	24,217	1643	124,008	—	555	10,071	22,486	598	7344	14	980,538
2003–2004	8480	25,112	411,826	171,428	18,959	3432	83,827	0	5384	16,920	59,889	656	23,050	0	828,964
2004–2005	5901	37,056	433,104	144,177	13,009	2326	88,152	0	2847	23,575	41,889	1412	19,785	247	813,480
2005–2006	1802	39,742	1,049,147	128,773	14,562	1998	45,632	—	2213	3271	32,419	959	6374	—	1,326,894
Average	3970	30,837	274,001	98,712	15,892	2837	52,029	384	4324	55,405	25,690	751	10,189	159	542,409

\*Economic value was determined by multiplying average pelt price by total harvest for a given species.

\*\*Beginning in 2001, average striped skunk pelt price was used to calculate all skunk (spotted and striped) economic value

\*\*\*Species with missing values did contribute to Utah's annual furbearer harvest but were not included in the economic value estimate due to missing average pelt price or harvest data.

## **HARVEST BY SPECIES**

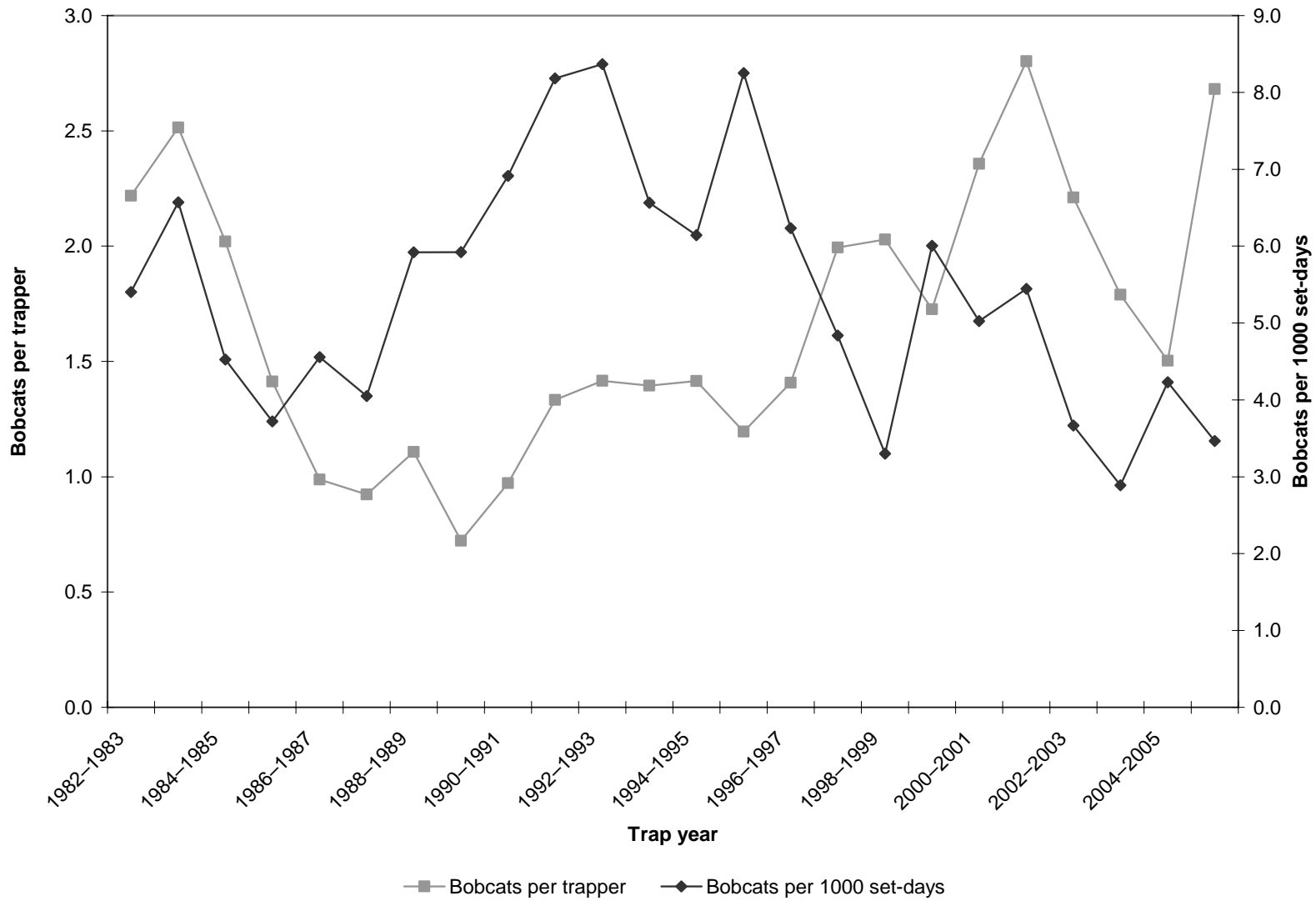
# BOBCAT

Statewide bobcat trapping harvest statistics, Utah 1983–2006.

Trap year	Trappers afield	Trapping harvest	Set-days	Bobcats / trapper	Set-days / bobcat	Bobcats / 1000 set-days	Pelt price (\$)
1982–1983	1145	2540	469,979	2.2	185.0	5.4	171.00
1983–1984	1050	2640	401,841	2.5	152.2	6.6	189.00
1984–1985	1253	2532	559,480	2.0	221.0	4.5	202.00
1985–1986	1083	1530	411,493	1.4	268.9	3.7	197.00
1986–1987	1036	1024	224,778	1.0	219.5	4.6	309.00
1987–1988	1108	1023	252,680	0.9	247.0	4.0	245.00
1988–1989	941	1042	175,990	1.1	168.9	5.9	221.00
1989–1990	1167	843	142,360	0.7	168.9	5.9	102.00
1990–1991	542	527	76,218	1.0	144.6	6.9	87.00
1991–1992	726	968	118,293	1.3	122.2	8.2	104.00
1992–1993	827	1171	139,949	1.4	119.5	8.4	90.00
1993–1994	900	1256	191,367	1.4	152.4	6.6	118.60
1994–1995	914	1293	210,522	1.4	162.8	6.1	70.02
1995–1996	749	896	108,594	1.2	121.2	8.3	79.51
1996–1997	615	866	138,899	1.4	160.4	6.2	147.80
1997–1998	619	1234	255,147	2.0	206.8	4.8	60.89
1998–1999	1031	2092	633,774	2.0	303.0	3.3	55.86
1999–2000	828	1430	238,152	1.7	166.5	6.0	82.64
2000–2001	852	2008	399,609	2.4	199.0	5.0	93.56
2001–2002	666	1866	342,678	2.8	183.6	5.4	147.66
2002–2003	984	2176	593,692	2.2	272.8	3.7	270.33
2003–2004	1133	2027	701,383	1.8	346.0	2.9	203.17
2004–2005	1300	1954	462,019	1.5	236.4	4.2	221.65
2005–2006	979	2625	757,380	2.7	288.5	3.5	358.56
Average	935	1565	333,595	1.7	213.1	4.7	159.47



Statewide bobcat trapping harvest trends, Utah 1983–2006.



Bobcat trapping harvest statistics by county and management unit, Utah 2006.

County	n	Trappers afield	Trapping harvest*	Traps set	Trapping days	Set-days	Bobcats / trapper	Set-days / bobcat	Bobcats / 1000 set-days
Beaver	6	67	104	945	3603	49,207	1.6	473.1	0.2
Box Elder	5	56	116	723	1857	27,245	2.1	234.9	0.4
Iron	16	178	226	2836	7339	124,781	1.3	552.1	0.2
Juab	8	89	175	867	2658	26,277	2.0	150.2	0.7
Millard	7	78	135	1212	1479	27,712	1.7	205.3	0.5
Tooele	3	33	89	645	1390	29,469	2.7	331.1	0.3
Great Basin totals	45	501	845	7228	18,326	284,691	1.7	336.9	0.3
Cache	1	11	21	111	778	7784	1.9	370.7	0.3
Davis	2	22	3	178	967	8474	0.1	2824.7	0.0
Morgan	1	11	35	89	500	4003	3.2	114.4	0.9
Piute	—	—	57	—	—	—	—	—	—
Rich	—	—	14	—	—	—	—	—	—
Salt Lake	—	—	4	—	—	—	—	—	—
Sanpete	3	33	86	89	834	2113	2.6	24.6	4.1
Sevier	3	33	145	456	1223	15,513	4.4	107.0	0.9
Summit	2	22	50	222	1657	16,569	2.3	331.4	0.3
Utah	9	100	87	1468	3136	46,894	0.9	539.0	0.2
Wasatch	2	22	10	145	278	1835	0.5	183.5	0.5
Weber	1	11	11	133	334	4003	1.0	363.9	0.3
Rocky Mountain totals	25	276	523	2902	9718	107,199	1.9	205.0	0.5
Daggett	2	22	24	156	556	4003	1.1	166.8	0.6
Duchesne	6	67	88	701	2168	27,078	1.3	307.7	0.3
Uintah	11	122	175	1290	5616	65,843	1.4	376.2	0.3
Uintah Basin totals	19	211	287	2147	8340	96,924	1.4	337.7	0.3
Carbon	2	22	95	267	1490	17,881	4.3	188.2	0.5
Emery	2	22	75	356	367	4671	3.4	62.3	1.6
Garfield	4	44	170	1145	2224	53,844	3.9	316.7	0.3
Grand	4	44	61	945	1379	34,907	1.4	572.2	0.2
Kane	4	44	172	1090	1768	36,908	3.9	214.6	0.5
San Juan	3	33	194	378	634	7161	5.9	36.9	2.7
Washington	6	67	133	1724	2813	97,314	2.0	731.7	0.1
Wayne	2	22	68	267	1323	15,880	3.1	233.5	0.4
Colorado Plateau totals	27	298	968	6172	11,998	268,566	3.2	277.4	0.4
Unknown	—	—	2	—	—	—	—	—	—
Statewide totals	88	979	2625	18,449	48,382	757,380	2.7	288.5	0.3

\*Harvest numbers were obtained when bobcat pelts were affixed with permanent possession tags; as such, total harvest numbers are not projections.

\*\*Statewide totals for sample size and trappers afield are not totals of the columns because trappers trapped multiple counties.

Bobcat non-trapping harvest statistics by county and management unit, Utah 2006.

County	n	Hunters afield	Non-trap harvest*	Hunter-days afield	Bobcats / hunter	Hunter-days / bobcat
Beaver	3	33	9	133	0.3	14.8
Box Elder	7	78	35	567	0.4	16.2
Iron	1	11	5	11	0.5	2.2
Juab	2	22	27	300	1.2	11.1
Millard	3	33	1	300	0.0	300.0
Tooele	5	56	9	545	0.2	60.6
Great Basin totals	21	233	86	1856	0.4	21.6
Cache	2	22	4	33	0.2	8.3
Davis	1	11	2	33	0.2	16.5
Morgan	4	44	12	167	0.3	13.9
Piute	2	22	0	89	0.0	—
Rich	1	11	2	33	0.2	16.5
Salt Lake	—	—	4	—	—	—
Sanpete	2	22	28	356	1.3	12.7
Sevier	3	33	7	100	0.2	14.3
Summit	2	22	15	267	0.7	17.8
Utah	7	78	27	979	0.3	36.3
Wasatch	2	22	45	222	2.0	4.9
Weber	2	22	7	33	0.3	4.7
Rocky Mountain totals	28	309	153	2312	0.5	15.1
Daggett	—	—	2	—	—	—
Duchesne	2	22	9	534	0.4	59.3
Uintah	6	67	8	901	0.1	112.6
Uintah Basin totals	8	89	19	1435	0.2	75.5
Carbon	2	22	4	145	0.2	36.3
Emery	2	22	23	300	1.0	13.0
Garfield	1	11	5	33	0.5	6.6
Grand	2	22	1	167	0.0	167.0
Kane	1	11	0	22	0.0	—
San Juan	7	78	6	790	0.1	131.7
Washington	3	33	3	1134	0.1	378.0
Wayne	—	—	1	—	—	—
Colorado Plateau totals	18	199	43	2591	0.2	60.3
Unknown	—	—	0	—	—	—
Statewide totals	55	612	301	8194	0.5	27.2

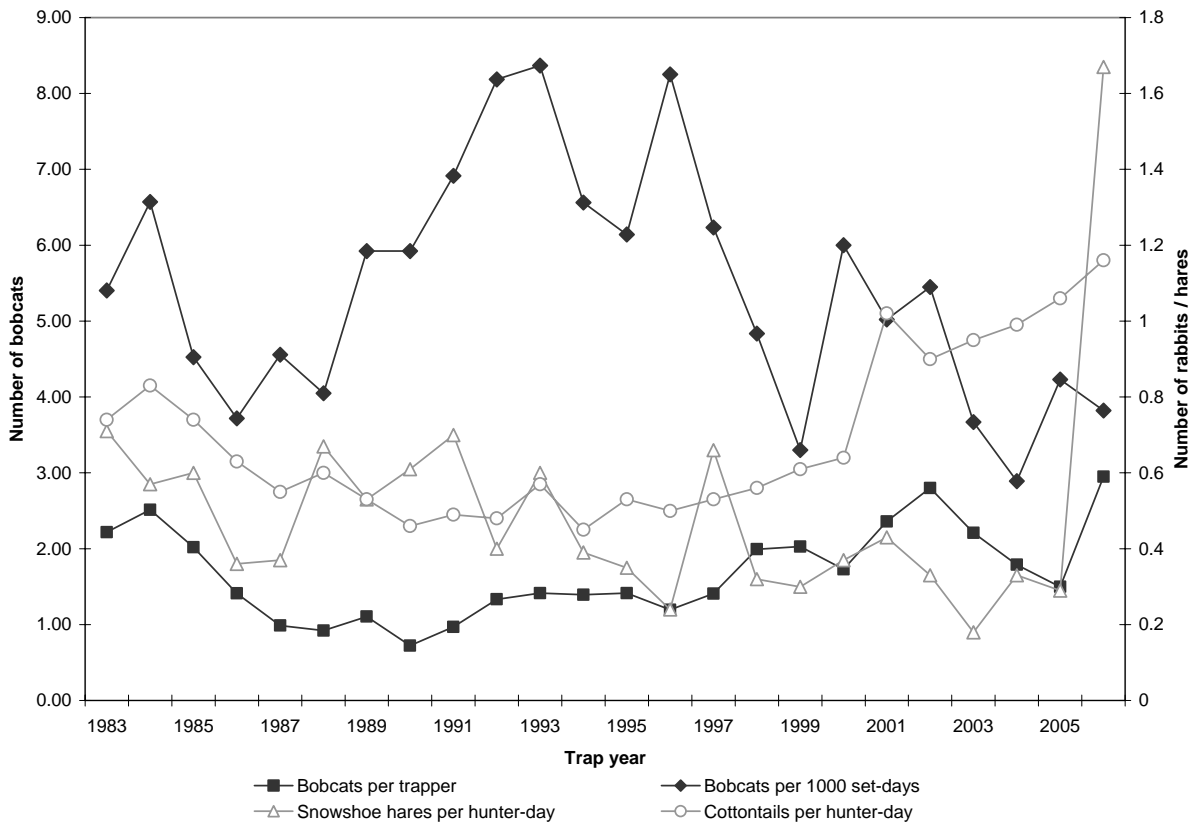
\*Harvest numbers were obtained when bobcat pelts were affixed with permanent possession tags; as such, total harvest numbers are not projections.

\*\*Statewide totals for sample size and hunters afield are not totals of the columns because hunters hunted multiple counties.

## Prey index

Lagomorph densities are generally considered to be a good indicator of bobcat recruitment and survival because high lagomorph populations provide an essential prey base for dispersing bobcats. When lagomorph populations are high or increasing, the bobcat population has also increased or at least remained stable. Thus, low populations of lagomorphs will reduce the likelihood of younger bobcats surviving to the next year. Cottontail rabbit and snowshoe hare data are taken from the Utah Upland Game Annual Report 2004–2005.

Relationships in harvest statistics between bobcat and prey, Utah 1983–2006.



## Method of Take

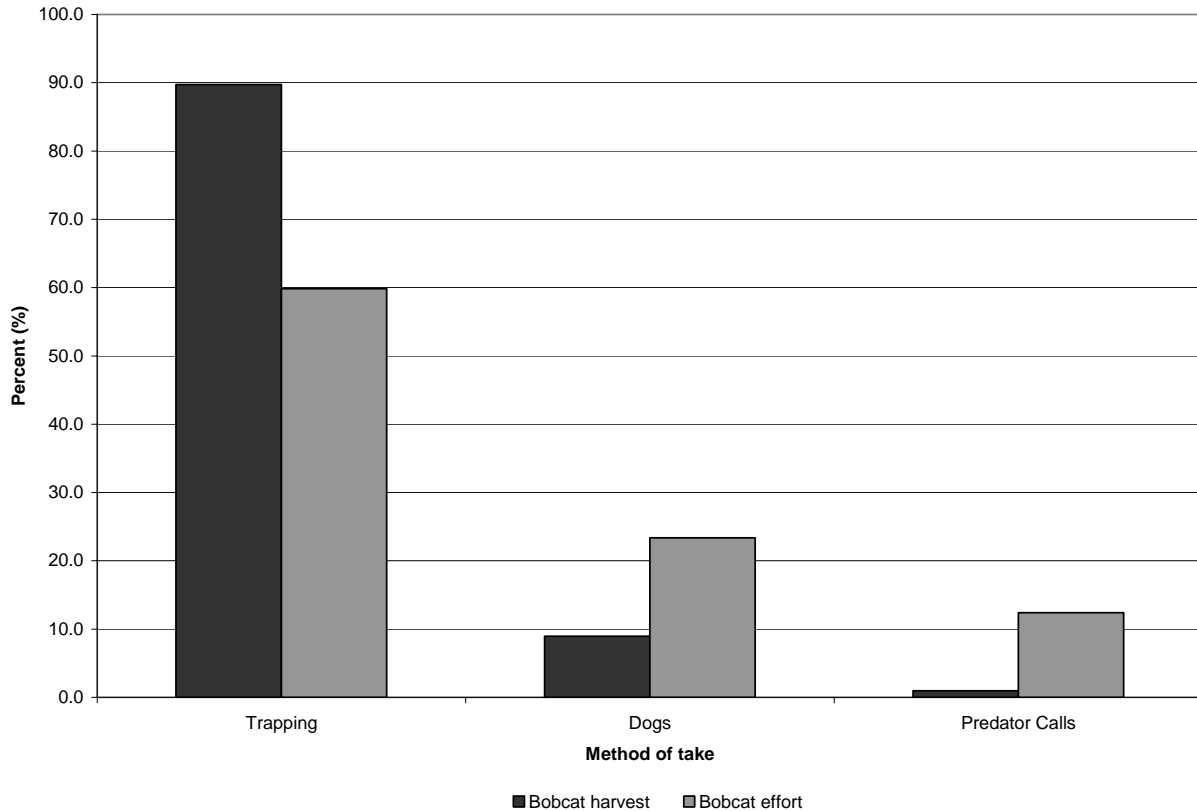
Bobcat harvest by method of take, Utah 2006.

Trapping		Dogs		Calling		Other		Unknown		Total
Harvest	%	Harvest	%	Harvest	%	Harvest	%	Harvest	%	
2625	89.7	262	9.0	28	1.0	10	0.3	1	0.0	2926

Bobcat harvest effort by method, Utah 2006.

Trapping		Dogs		Calling		Trapping / calling / dogs		Total
Trappers	% of total	Hunters	% of total	Hunters	% of total	Hunters	% of total	
912	59.8	356	23.4	189	12.4	67	4.4	1523

Comparison of bobcat harvest and effort by method, Utah 2006.



## Population trends

Bobcat harvest age and sex ratios, Utah 1986–2006.

Trap year	Juveniles / adult female	Juveniles / adult	Males / females	Juvenile males / juvenile females
1985–1986	0.48	0.21	1.20	0.95
1986–1987	0.67	0.30	1.09	0.92
1987–1988	1.18	0.53	1.11	0.97
1988–1989	1.09	0.44	1.32	1.05
1989–1990	0.76	0.32	1.39	1.00
1990–1991	0.82	0.33	1.23	0.62
1991–1992	0.86	0.69	1.47	1.25
1992–1993	0.91	1.00	1.37	1.21
1993–1994	1.58	0.61	1.32	0.98
1994–1995	0.62	0.57	1.34	1.14
1995–1996	1.36	0.54	1.30	0.72
1996–1997	1.86	0.67	1.40	1.10
1997–1998	1.15	0.44	1.38	0.94
1998–1999	2.06	0.82	1.30	1.13
1999–2000	0.82	0.30	1.55	1.01
2000–2001	0.69	0.26	1.56	1.12
2001–2002	0.40	0.16	1.44	0.96
2002–2003	0.37	0.16	1.24	0.88
2003–2004	0.63	0.29	1.10	0.85
2004–2005	0.80	0.32	1.28	0.83
2005–2006	5.85	2.54	1.36	1.37
Average	1.19	0.55	1.32	1.00

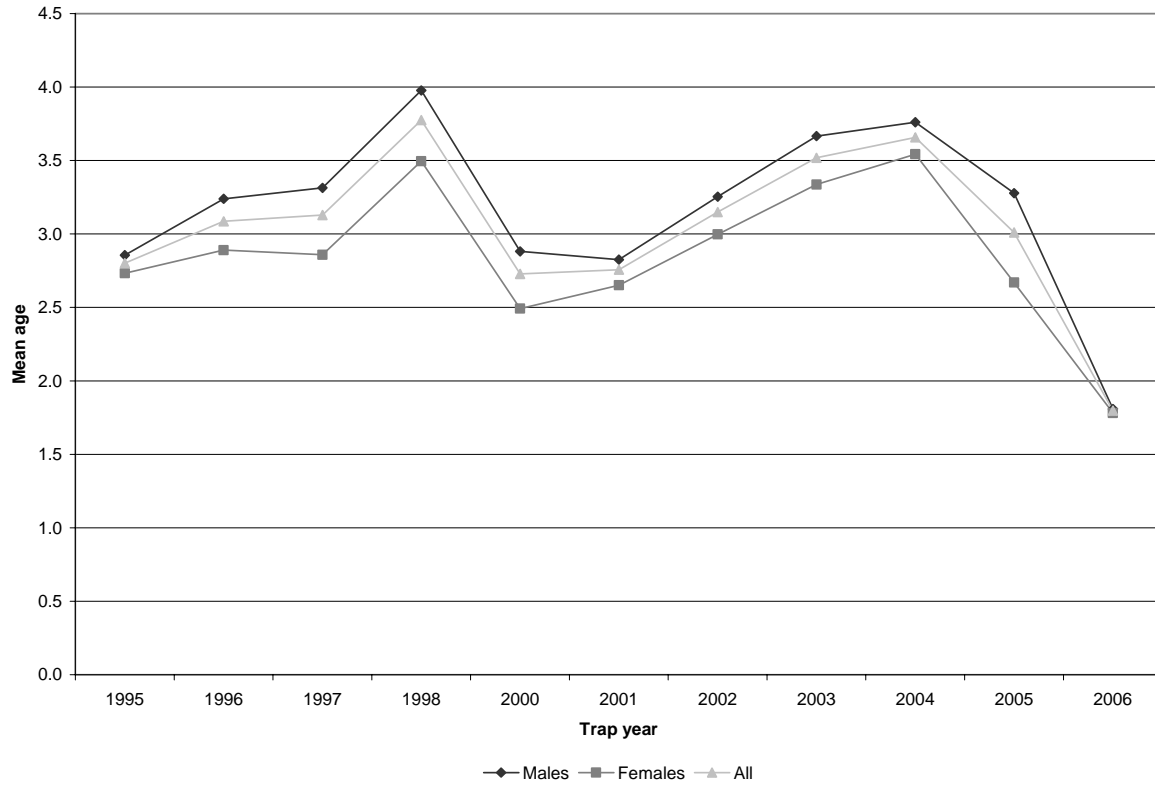
\*Based on 1411 (48%) harvested bobcats that were aged and sexed.

Adult and juvenile bobcat survival (from Chapman-Robson estimator), Utah 1986–2006.

Trap year	Adult survival			Juvenile survival		
	S (%)	95% CI	Chi-square	S (%)	95% CI	Chi-square
1985–1986	63	60–65	—	42	40–45	—
1986–1987	63	60–65	—	35	32–39	—
1987–1988	65	61–68	—	35	32–38	—
1988–1989	64	60–68	—	38	35–40	—
1989–1990	67	63–71	—	41	38–44	—
1990–1991	58	53–62	—	36	31–41	—
1991–1992	58	55–60	—	32	29–36	—
1992–1993	59	56–63	—	29	25–33	—
1993–1994	54	52–57	—	40	36–43	—
1994–1995	57	54–59	—	34	30–37	—
1995–1996	64	61–66	—	30	25–34	—
1996–1997	68	65–70	—	34	30–38	—
1997–1998	71	69–74	17.3, 10df	34	28–40	62.6, 2df
1998–1999	71	70–73	29.5, 12df	29	26–33	110.2, 2df
1999–2000	66	64–68	71.4, 12df	35	33–38	445.6, 2df
2000–2001	64	62–66	144.6, 12df	36	33–39	389.3, 2df
2001–2002	65	63–67	302.4, 12df	39	36–42	596.6, 2df
2002–2003	67	65–68	1988.1, 12df	39	35–42	459.5, 2df
2003–2004	71	70–72	1328.7, 12df	22	19–25	31.6, 2df
2004–2005	74	73–76	105.2, 12df	36	33–38	985.6, 2df
2005–2006	68	65–70	33.6, 12df	16	14–18	3223.7, 2df
Average	65	—	—	34	—	—

## Age structure

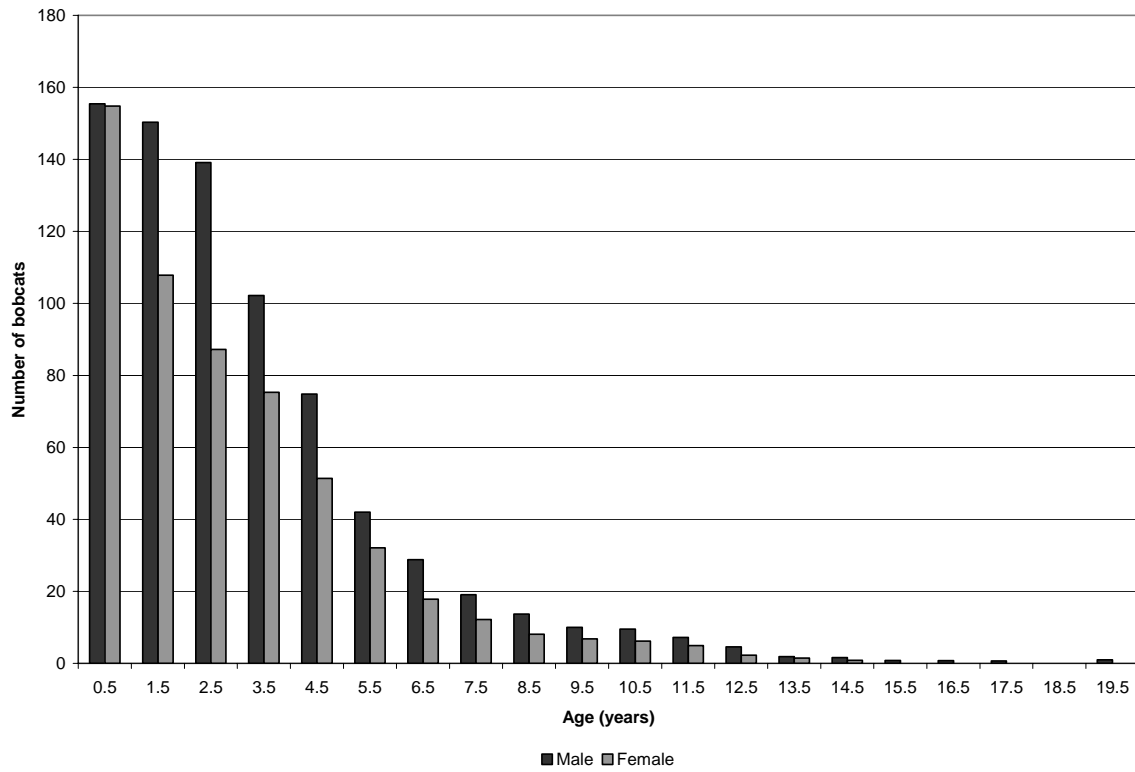
Average age of harvested bobcats, Utah 1996–2006.



\*Excludes age structure data from the 1998–1999 trap season.

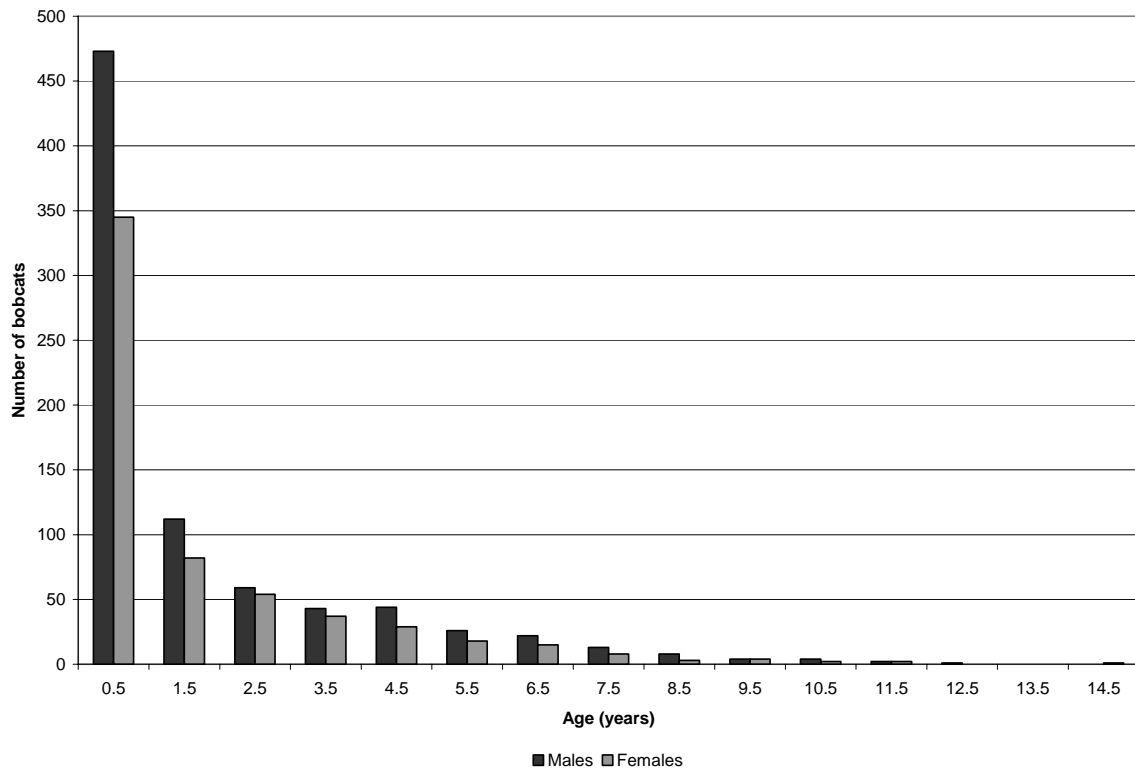


Average number of bobcats harvested by age category, Utah 1996–2006.



\*Excludes age structure data from the 1998–1999 trap season.

Age structure of harvested bobcats, Utah 2006.



# COYOTE

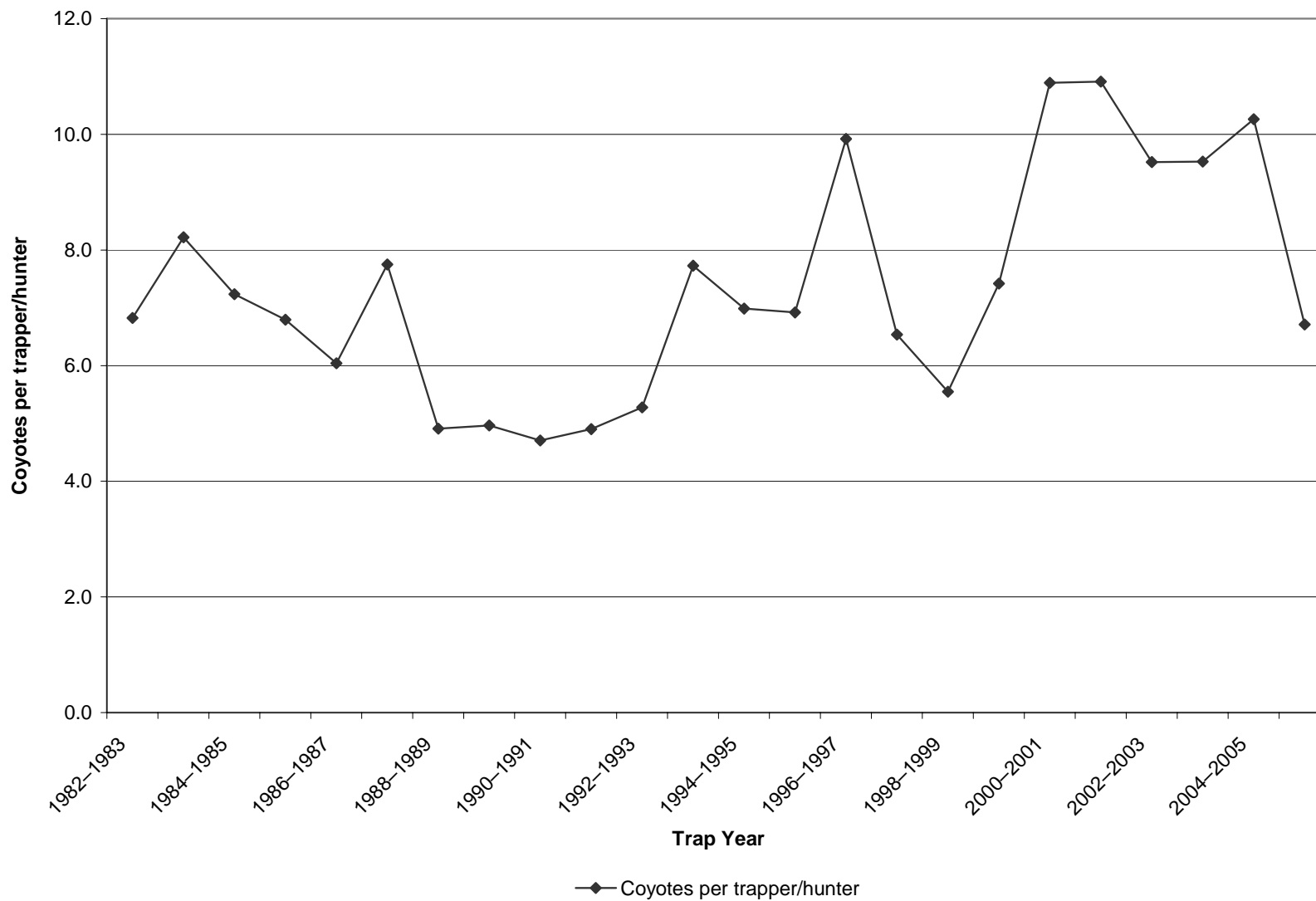
Statewide coyote harvest statistics, Utah 1983–2006.

Trap year	Harvest			Total	Hunters / trappers afield	Coyotes per hunter / trapper	Pelt price (\$)
	Wildlife Services	Trapping	Non-trap				
1982–1983	4130	5738	—	9868	841	6.8	35.42
1983–1984	5063	5878	—	10,941	715	8.2	25.92
1984–1985	5427	5991	—	11,418	828	7.2	32.35
1985–1986	5045	4851	—	9896	714	6.8	19.65
1986–1987	4116	4947	—	9063	819	6.0	33.64
1987–1988	4338	6919	—	11,257	893	7.7	15.55
1988–1989	4853	3200	—	8053	652	4.9	8.47
1989–1990	5168	3331	—	8499	671	5.0	8.68
1990–1991	4444	1831	—	6275	389	4.7	11.41
1991–1992	4347	3255	—	7602	664	4.9	20.00
1992–1993	4932	3666	—	8598	695	5.3	15.75
1993–1994	5827	5247	—	11,074	679	7.7	24.58
1994–1995	3893	5267	—	9160	754	7.0	12.51
1995–1996	4165	4372	—	8537	632	6.9	15.49
1996–1997	4484	4017	—	8501	405	9.9	18.73
1997–1998	4169	3228	—	7397	494	6.5	10.80
1998–1999	3464	4337	—	7801	782	5.5	10.80
1999–2000	4534	3510	—	8044	473	7.4	19.14
2000–2001	4275	4966	—	9241	456	10.9	14.39
2001–2002	3874	4354	—	8228	399	10.9	16.17
2002–2003	3394	5446	—	8840	572	9.5	32.62
2003–2004	3897	6660	—	10,557	699	9.5	25.74
2004–2005	4125	7173	—	11,298	699	10.3	20.10
2005–2006	4820	1190	3039	9049	630	6.7	30.45
Average	4449	4557	3039	9133	648	6.6	19.93

\*Prior to the 2005–2006 season, harvest by hunting and trapping was not collected separately. As such, trapping harvest estimates include all harvest by hunters and trappers.

\*\*Hunters/trappers afield and coyotes per hunter/trapper do not include Wildlife Services data.

Statewide coyote harvest trends, Utah 1983–2006.



Coyote trapping harvest statistics by county and management unit, Utah 2006.

County	n	Trappers afield	Trapping harvest	Traps set	Trapping days	Set-days	Coyotes / trapper	Set-days / coyote	Coyotes / 1000 set-days
Beaver	1	7	0	33	197	985	0.0	—	0.0
Box Elder	2	13	99	223	617	7672	7.6	77.5	12.9
Iron	5	33	72	663	1281	32,184	2.2	447.0	2.2
Juab	4	26	46	217	788	6864	1.8	149.2	6.7
Millard	1	7	46	53	131	1051	6.6	22.8	43.8
Tooele	1	7	0	26	26	105	0.0	—	0.0
Great Basin totals	14	93	263	1215	3040	48,861	2.8	185.8	5.4
Cache	1	7	13	39	230	1379	1.9	106.1	9.4
Davis	—	—	—	—	—	—	—	—	—
Morgan	—	—	—	—	—	—	—	—	—
Piute	—	—	—	—	—	—	—	—	—
Rich	1	7	0	39	92	552	0.0	—	0.0
Salt Lake	1	7	0	26	296	1182	0.0	—	0.0
Sanpete	—	—	—	—	—	—	—	—	—
Sevier	2	13	105	230	2791	53,858	8.1	512.9	1.9
Summit	1	7	20	66	394	3941	2.9	197.1	5.1
Utah	1	7	0	33	33	164	0.0	—	0.0
Wasatch	1	7	197	328	591	29,556	28.1	150.0	6.7
Weber	1	7	20	79	66	788	2.9	39.4	25.4
Rocky Mountain totals	9	62	355	840	4493	91,420	5.7	257.5	3.9
Daggett	1	7	0	66	131	1314	0.0	—	0.0
Duchesne	1	7	39	53	197	1576	5.6	40.4	24.7
Uintah	5	33	46	230	1287	14,312	1.4	311.1	3.2
Uintah Basin totals	7	47	85	349	1615	17,202	1.8	202.4	4.9
Carbon	1	7	7	79	585	7015	1.0	1002.1	1.0
Emery	1	7	0	26	131	525	0.0	—	0.0
Garfield	4	26	302	591	1767	40,157	11.6	133.0	7.5
Grand	1	7	0	13	197	394	0.0	—	0.0
Kane	3	20	99	493	1077	21,537	5.0	217.5	4.6
San Juan	3	20	33	217	453	5281	1.7	160.0	6.2
Washington	2	13	7	33	53	190	0.5	27.1	36.8
Wayne	1	7	39	131	525	10,509	5.6	269.5	3.7
Colorado Plateau totals	16	107	487	1583	4788	85,608	4.6	175.8	5.7
Unknown	—	—	—	—	—	—	—	—	—
Statewide totals	39	256	1190	3987	13,936	243,091	4.6	204.3	4.9

\*Statewide totals for sample size and trappers afield are not totals of the columns because trappers trapped multiple counties.

Coyote non-trapping harvest statistics by county and management unit, Utah 2006.

County	n	Hunters afield	Non-trap harvest	Hunter-days afield	Coyotes / hunter	Hunter-days / coyote
Beaver	4	26	177	361	6.8	2.0
Box Elder	8	53	466	486	8.8	1.0
Iron	3	20	53	637	2.7	12.0
Juab	4	26	39	171	1.5	4.4
Millard	5	33	85	335	2.6	3.9
Tooele	6	39	394	920	10.1	2.3
Great Basin totals	30	197	1214	2910	6.2	2.4
Cache	5	33	72	348	2.2	4.8
Davis	—	—	—	—	—	—
Morgan	4	26	59	85	2.3	1.4
Piute	—	—	—	—	—	—
Rich	2	13	177	138	13.6	0.8
Salt Lake	—	—	—	—	—	—
Sanpete	3	20	39	361	2.0	9.3
Sevier	3	20	26	217	1.3	8.3
Summit	1	7	—	7	0.0	—
Utah	5	33	92	158	2.8	1.7
Wasatch	2	13	39	151	3.0	3.9
Weber	2	13	53	138	4.1	2.6
Rocky Mountain totals	27	178	557	1603	3.1	2.9
Daggett	4	26	112	236	4.3	2.1
Duchesne	5	33	112	118	3.4	1.1
Uintah	13	85	447	2489	5.3	5.6
Uintah Basin totals	22	144	671	2843	4.7	4.2
Carbon	3	20	46	118	2.3	2.6
Emery	2	13	13	144	1.0	11.1
Garfield	1	7	26	585	3.7	22.5
Grand	3	20	39	118	2.0	3.0
Kane	1	7	13	585	1.9	45.0
San Juan	6	39	190	611	4.9	3.2
Washington	2	13	66	250	5.1	3.8
Wayne	3	20	204	250	10.2	1.2
Colorado Plateau totals	21	139	597	2661	4.3	4.5
Unknown	1	7	—	7	0.0	—
Statewide totals	67	440	3039	10,024	6.9	3.3

\*Statewide totals for sample size and hunters afield are not totals of the columns because hunters hunted multiple counties.

## Method of Take

Coyote harvest by method of take, Utah 2006.

Trapping		Dogs		Calling		Other		Total
Harvest	% of total	Harvest	% of total	Harvest	% of total	Harvest	% of total	
1190	28.1	124	3.0	2915	68.9	0	0.0	4229

Coyote harvest effort by method, Utah 2006.

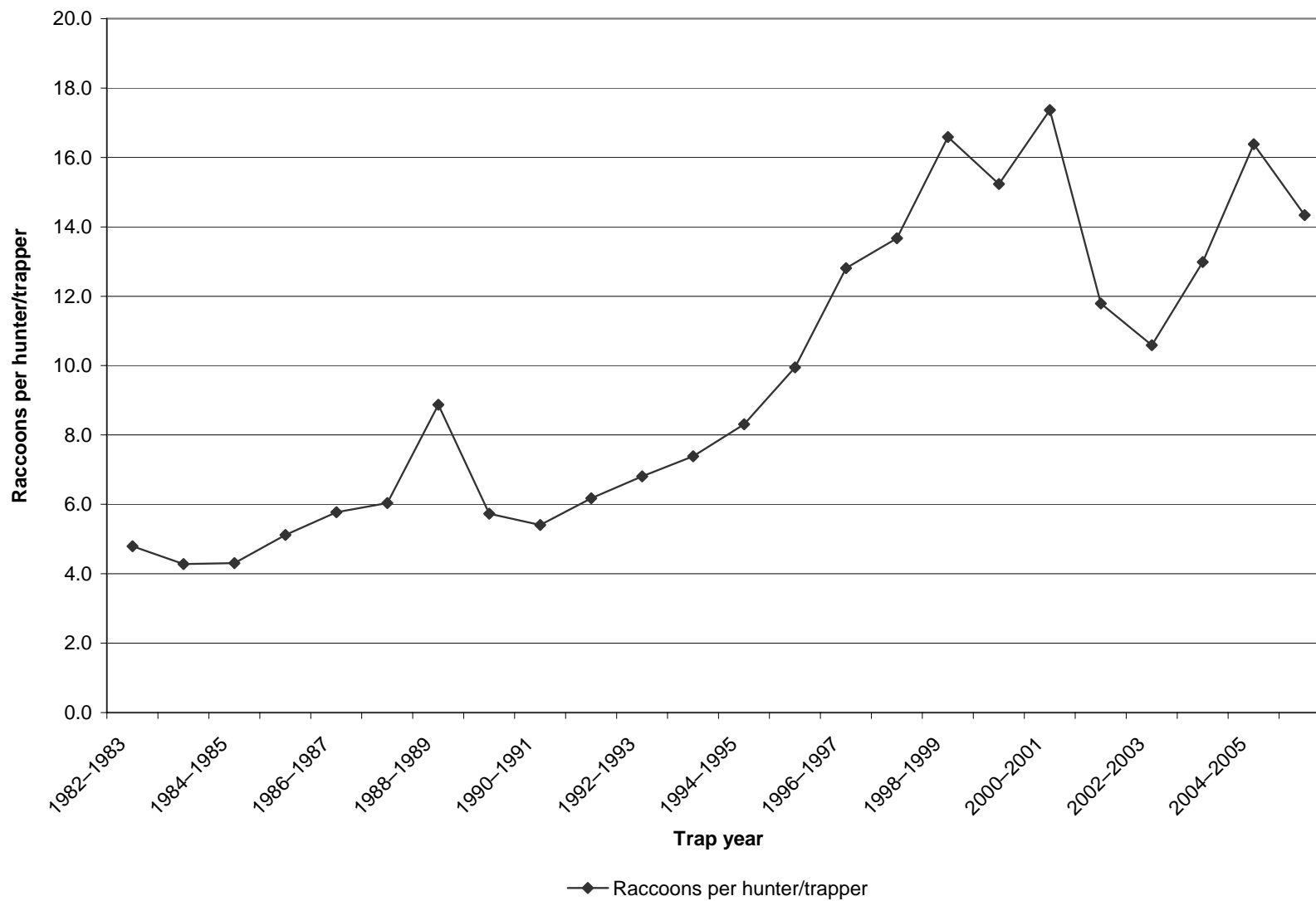
Trapping		Dogs		Calling		Trapping / calling		Total
Trappers	% of total	Hunters	% of total	Hunters	% of total	Hunters	% of total	
190	30.2	13	2.1	361	57.3	66	10.5	630

# RACCOON

Statewide raccoon harvest statistics, Utah 1983–2006.

Year	Hunters / trappers afield	Harvest	Raccoons per hunter / trapper	Pelt price (\$)
1982–1983	178	853	4.8	12.34
1983–1984	192	822	4.3	13.51
1984–1985	329	1417	4.3	12.85
1985–1986	290	1485	5.1	9.26
1986–1987	418	2412	5.8	12.62
1987–1988	434	2619	6.0	9.41
1988–1989	350	3104	8.9	7.71
1989–1990	430	2464	5.7	5.78
1990–1991	214	1156	5.4	4.65
1991–1992	368	2273	6.2	4.72
1992–1993	272	1851	6.8	2.57
1993–1994	306	2259	7.4	6.98
1994–1995	364	3025	8.3	6.06
1995–1996	293	2914	9.9	8.07
1996–1997	330	4228	12.8	13.35
1997–1998	365	4989	13.7	9.98
1998–1999	468	7765	16.6	4.95
1999–2000	349	5317	15.2	5.67
2000–2001	327	5678	17.4	5.16
2001–2002	321	3785	11.8	8.04
2002–2003	378	4001	10.6	5.62
2003–2004	434	5634	13.0	10.63
2004–2005	391	6405	16.4	6.54
2005–2006	230	3298	14.3	9.83
Average	339	3324	9.8	8.18

Statewide raccoon harvest trends, Utah 1983–2006.





Raccoon trapping harvest statistics by county and management unit, Utah 2006.

County	n	Trappers afield	Trapping harvest	Traps set	Trapping days	Set-days	Raccoons / trapper	Set-days / raccoon	Raccoons / 1000 set-days
Beaver	1	7	53	7	92	92	7.6	1.7	576.1
Box Elder	—	—	—	—	—	—	—	—	—
Iron	—	—	—	—	—	—	—	—	—
Juab	—	—	—	—	—	—	—	—	—
Millard	—	—	—	—	—	—	—	—	—
Tooele	—	—	—	—	—	—	—	—	—
Great Basin totals	1	7	53	7	92	92	7.6	1.7	576.1
Cache	2	13	506	210	788	12,611	38.9	24.9	40.1
Davis	1	7	13	66	66	657	1.9	50.5	19.8
Morgan	—	—	—	—	—	—	—	—	—
Piute	—	—	—	—	—	—	—	—	—
Rich	—	—	—	—	—	—	—	—	—
Salt Lake	2	13	66	223	388	3941	5.1	59.7	16.7
Sanpete	2	13	256	59	887	4204	19.7	16.4	60.9
Sevier	—	—	—	—	—	—	—	—	—
Summit	—	—	—	—	—	—	—	—	—
Utah	2	13	79	53	92	368	6.1	4.7	214.7
Wasatch	2	13	26	79	131	788	2.0	30.3	33.0
Weber	4	26	197	164	388	5576	7.6	28.3	35.3
Rocky Mountain totals	15	98	1143	854	2740	28,145	11.7	24.6	40.6
Daggett	—	—	—	—	—	—	—	—	—
Duchesne	—	—	—	—	—	—	—	—	—
Uintah	5	33	545	1274	4112	401,350	16.5	736.4	1.4
Uintah Basin totals	5	33	545	1274	4112	401,350	16.5	736.4	1.4
Carbon	—	—	—	—	—	—	—	—	—
Emery	—	—	—	—	—	—	—	—	—
Garfield	—	—	—	—	—	—	—	—	—
Grand	—	—	—	—	—	—	—	—	—
Kane	—	—	—	—	—	—	—	—	—
San Juan	2	13	7	46	79	144	0.5	20.6	48.6
Washington	—	—	—	—	—	—	—	—	—
Wayne	1	7	13	33	525	2627	1.9	202.1	4.9
Colorado Plateau totals	3	20	20	79	604	2771	1.0	138.6	7.2
Unknown	—	—	—	—	—	—	—	—	—
Statewide totals	24	158	1761	2214	7548	432,358	11.1	245.5	4.1

\*Statewide totals for sample size and trappers afield are not totals of the columns because trappers trapped multiple counties.

Raccoon non-trapping harvest statistics by county and management unit, Utah 2006.

County	n	Hunters afield	Non-trap harvest	Hunter-days afield	Raccoons / hunter	Hunter-days / raccoon
Beaver	1	7	53	92	7.6	1.7
Box Elder	—	—	—	—	—	—
Iron	—	—	—	—	—	—
Juab	—	—	—	—	—	—
Millard	—	—	—	—	—	—
Tooele	1	7	20	197	2.9	9.9
Great Basin totals	2	14	73	289	5.2	4.0
Cache	1	7	—	7	0.0	—
Davis	1	7	131	131	18.7	1.0
Morgan	1	7	13	7	1.9	0.5
Piute	—	—	—	—	—	—
Rich	—	—	—	—	—	—
Salt Lake	1	7	13	7	1.9	0.5
Sanpete	4	26	361	374	13.9	1.0
Sevier	—	—	—	—	—	—
Summit	—	—	—	—	—	—
Utah	—	—	—	—	—	—
Wasatch	1	7	131	66	18.7	0.5
Weber	2	13	289	598	22.2	2.1
Rocky Mountain totals	11	74	938	1190	12.7	1.3
Daggett	—	—	—	—	—	—
Duchesne	2	13	217	1077	16.7	5.0
Uintah	4	26	309	525	11.9	1.7
Uintah Basin totals	6	39	526	1602	13.5	3.0
Carbon	—	—	—	—	—	—
Emery	—	—	—	—	—	—
Garfield	—	—	—	—	—	—
Grand	—	—	—	—	—	—
Kane	—	—	—	—	—	—
San Juan	—	—	—	—	—	—
Washington	—	—	—	—	—	—
Wayne	—	—	—	—	—	—
Colorado Plateau totals	—	—	—	—	—	—
Unknown	—	—	—	—	—	—
Statewide totals	13	85	1537	3081	18.1	2.0

\*Statewide totals for sample size and hunters afield are not totals of the columns because hunters hunted multiple counties.

## Method of Take

Raccoon harvest by method of take, Utah 2006.

Trapping		Dogs		Calling		Other		Total
Harvest	% of total	Harvest	% of total	Harvest	% of total	Harvest	% of total	
1761	53.4	1517	46.0	20	0.6	0	0.0	3298

Raccoon harvest effort by method, Utah 2006.

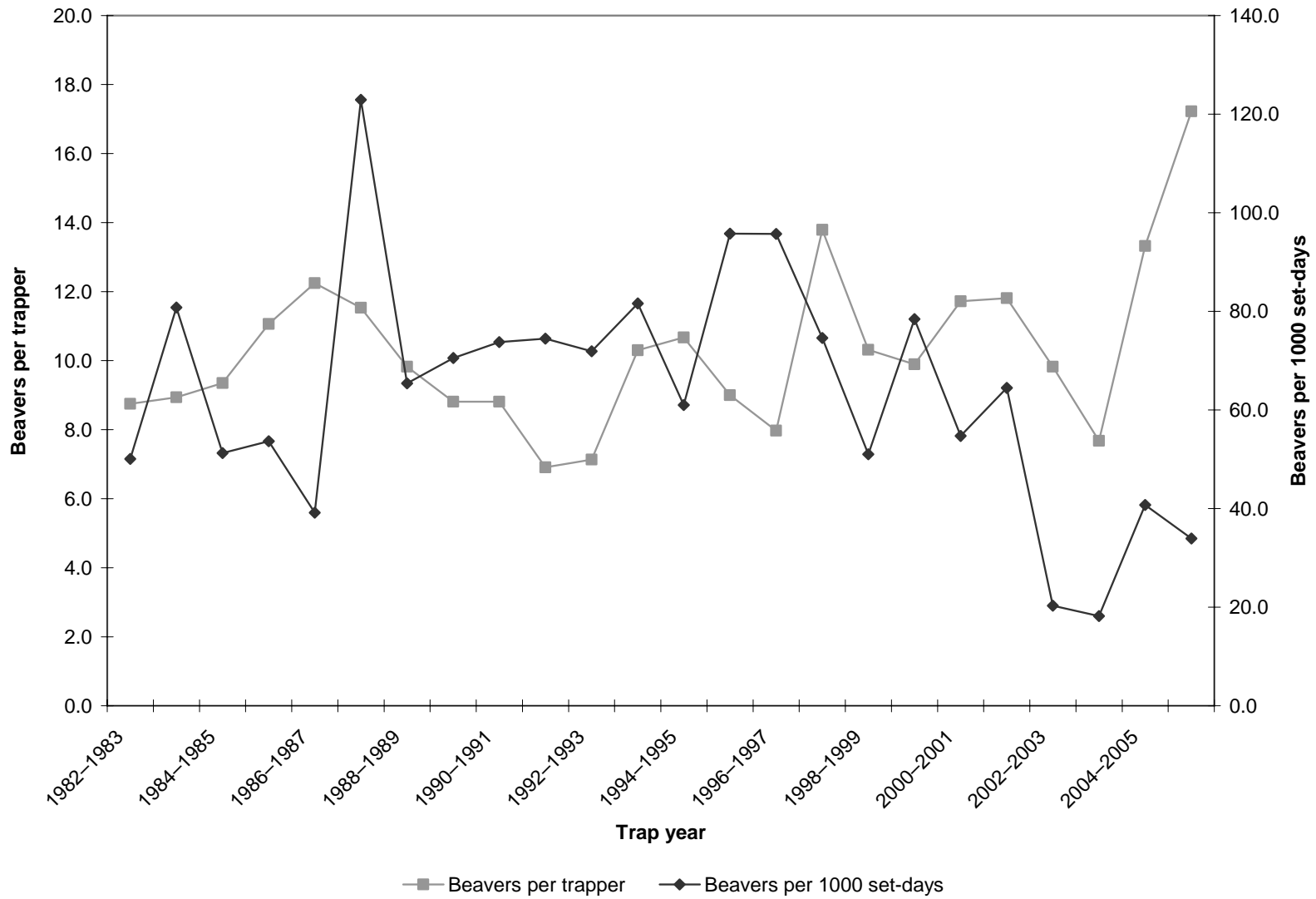
Trapping		Dogs		Calling		Trapping / calling		Total
Trappers	% of total	Hunters	% of total	Hunters	% of total	Hunters	% of total	
145	63.0	59	25.7	13	5.7	13	5.7	230

# BEAVER

Statewide beaver harvest statistics, Utah 1983–2006.

Trap year	Trappers afield	Harvest	Set-days	Beavers / trapper	Set-days / beaver	Beavers / 1000 set-days	Pelt price (\$)
1982–1983	181	1584	31,632	8.8	20.0	50.1	12.89
1983–1984	200	1788	22,131	8.9	12.4	80.8	14.10
1984–1985	285	2664	51,960	9.3	19.5	51.3	16.44
1985–1986	293	3242	60,428	11.1	18.6	53.7	14.64
1986–1987	338	4138	105,661	12.2	25.5	39.2	22.64
1987–1988	409	4716	38,367	11.5	8.1	122.9	14.67
1988–1989	277	2721	41,616	9.8	15.3	65.4	10.02
1989–1990	390	3436	48,716	8.8	14.2	70.5	11.93
1990–1991	176	1551	21,029	8.8	13.6	73.8	6.49
1991–1992	216	1492	20,040	6.9	13.4	74.5	8.94
1992–1993	134	956	13,291	7.1	13.9	71.9	7.74
1993–1994	171	1761	21,578	10.3	12.3	81.6	9.59
1994–1995	239	2551	41,818	10.7	16.4	61.0	12.65
1995–1996	170	1530	15,982	9.0	10.4	95.7	13.40
1996–1997	163	1299	13,576	8.0	10.5	95.7	21.15
1997–1998	210	2896	38,816	13.8	13.4	74.6	13.58
1998–1999	286	2950	57,818	10.3	19.6	51.0	9.37
1999–2000	185	1830	23,342	9.9	12.8	78.4	10.98
2000–2001	170	1992	36,406	11.7	18.3	54.7	10.32
2001–2002	143	1689	26,199	11.8	15.5	64.5	10.85
2002–2003	175	1720	84,755	9.8	49.3	20.3	9.47
2003–2004	232	1781	97,791	7.7	54.9	18.2	14.10
2004–2005	200	2664	65,401	13.3	24.5	40.7	13.91
2005–2006	130	2239	66,026	17.2	29.5	33.9	17.75
Average	224	2300	43,516	10.3	18.9	52.8	12.82

Statewide beaver harvest trends, Utah 1983–2006.



Beaver harvest statistics by county and management unit, Utah 2006.

County	n	Trappers afield	Harvest	Traps set	Trapping days	Set-days	Beavers / trapper	Set-days / beaver	Beavers / 1000 set-days
Beaver	—	—	—	—	—	—	—	—	—
Box Elder	—	—	—	—	—	—	—	—	—
Iron	—	—	—	—	—	—	—	—	—
Juab	—	—	—	—	—	—	—	—	—
Millard	—	—	—	—	—	—	—	—	—
Tooele	—	—	—	—	—	—	—	—	—
Great Basin totals	—	—	—	—	—	—	—	—	—
Cache	1	6	6	26	91	364	1.0	60.7	16.5
Davis	—	—	—	—	—	—	—	—	—
Morgan	1	6	13	13	45	91	2.2	7.0	142.9
Piute	—	—	—	—	—	—	—	—	—
Rich	—	—	—	—	—	—	—	—	—
Salt Lake	2	13	221	253	104	1811	17.0	8.2	122.0
Sanpete	—	—	—	—	—	—	—	—	—
Sevier	1	6	13	26	390	1558	2.2	119.8	8.3
Summit	1	6	117	45	136	954	19.5	8.2	122.6
Utah	3	19	32	195	286	3681	1.7	115.0	8.7
Wasatch	2	13	84	52	97	565	6.5	6.7	148.7
Weber	2	13	19	78	175	857	1.5	45.1	22.2
Rocky Mountain totals	13	82	505	688	1324	9881	6.2	19.6	51.1
Daggett	—	—	—	—	—	—	—	—	—
Duchesne	2	13	669	110	1234	17,659	51.5	26.4	37.9
Uintah	5	32	1039	286	2454	36,149	32.5	34.8	28.7
Uintah Basin totals	7	45	1708	396	3688	53,808	38.0	31.5	31.7
Carbon	—	—	—	—	—	—	—	—	—
Emery	—	—	—	—	—	—	—	—	—
Garfield	—	—	—	—	—	—	—	—	—
Grand	—	—	—	—	—	—	—	—	—
Kane	—	—	—	—	—	—	—	—	—
San Juan	—	—	—	—	—	—	—	—	—
Washington	1	6	26	78	195	2337	4.3	89.9	11.1
Wayne	—	—	—	—	—	—	—	—	—
Colorado Plateau totals	1	6	26	78	195	2337	4.3	89.9	11.1
Unknown	—	—	—	—	—	—	—	—	—
Statewide totals	20	130	2239	1162	5207	66,026	17.2	29.5	33.9

\*Statewide totals for sample size and trappers afield are not totals of the columns because trappers trapped multiple counties.

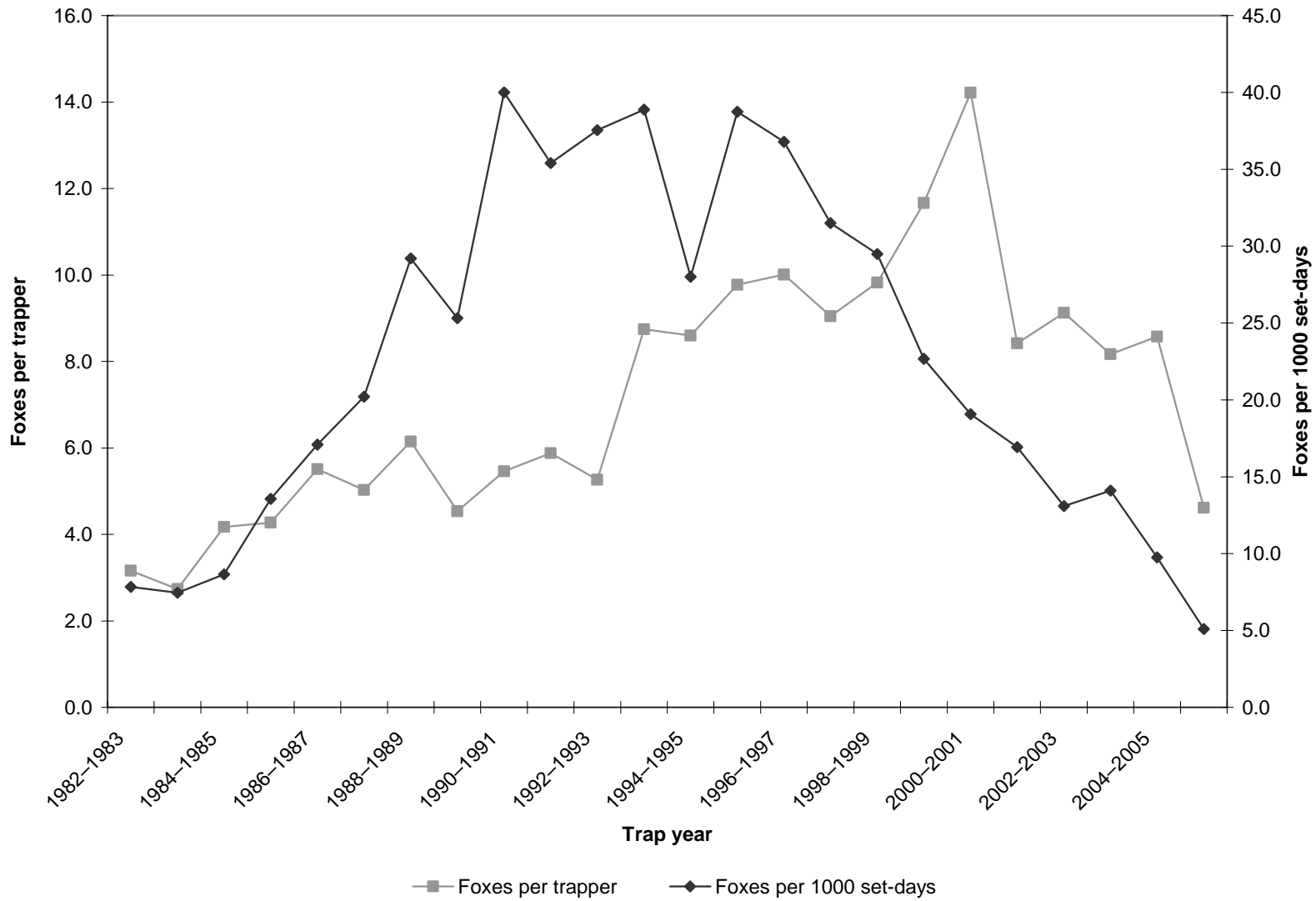
# RED FOX

Statewide red fox harvest statistics, Utah 1983–2006.

Trap year	Trappers afield	Harvest	Set-days	Foxes / trapper	Set-days / fox	Foxes / 1000 set-days	Pelt price (\$)
1982–1983	172	544	69,366	3.2	127.5	7.8	30.13
1983–1984	191	523	70,121	2.7	134.1	7.5	28.43
1984–1985	298	1244	143,815	4.2	115.6	8.7	25.90
1985–1986	316	1351	99,623	4.3	73.7	13.6	15.83
1986–1987	444	2446	143,189	5.5	58.5	17.1	20.14
1987–1988	506	2545	126,008	5.0	49.5	20.2	13.66
1988–1989	398	2446	83,777	6.1	34.3	29.2	6.57
1989–1990	496	2250	88,876	4.5	39.5	25.3	7.80
1990–1991	365	1993	49,821	5.5	25.0	40.0	6.34
1991–1992	623	3663	103,484	5.9	28.3	35.4	10.70
1992–1993	594	3126	83,253	5.3	26.6	37.5	10.12
1993–1994	578	5055	130,027	8.7	25.7	38.9	14.74
1994–1995	509	4378	156,307	8.6	35.7	28.0	15.34
1995–1996	421	4115	106,218	9.8	25.8	38.7	18.08
1996–1997	427	4274	116,183	10.0	27.2	36.8	17.48
1997–1998	414	3744	118,860	9.0	31.7	31.5	11.31
1998–1999	570	5600	189,944	9.8	33.9	29.5	8.95
1999–2000	420	4900	216,141	11.7	44.1	22.7	14.19
2000–2001	375	5330	279,449	14.2	52.4	19.1	16.92
2001–2002	379	3192	188,572	8.4	59.1	16.9	24.48
2002–2003	482	4399	335,863	9.1	76.3	13.1	28.19
2003–2004	568	4639	329,026	8.2	70.9	14.1	18.07
2004–2005	545	4674	479,042	8.6	102.5	9.8	18.86
2005–2006*	406	1874	—	4.6	196.3	5.1	24.35
Average	437	3263	161,172	7.5	49.4	20.2	16.94

\*Due to outliers in the data, statewide set-days could not be calculated. Set-days per fox and foxes per 1000 set-days were calculated after removing outliers.

Statewide red fox harvest trends, Utah 1983–2006.





Red fox harvest statistics by county and management unit, Utah 2006.

County	n	Trappers afield	Harvest	Traps set	Trapping days	Set-days	Foxes / trapper	Set-days / fox	Foxes / 1000 set-days
Beaver	2	13	13	59	85	635	1.0	48.8	20.5
Box Elder	2	13	13	13	33	33	1.0	2.5	393.9
Iron	2	13	13	46	98	556	1.0	42.8	23.4
Juab	2	13	26	65	1472	7360	2.0	283.1	3.5
Millard	3	20	7	46	406	1976	0.4	282.3	3.5
Tooele	3	20	20	52	150	608	1.0	30.4	32.9
Great Basin totals	14	92	92	281	2244	11,168	1.0	121.4	8.2
Cache	4	26	46	170	667	8519	1.8	185.2	5.4
Davis	2	13	13	92	523	2879	1.0	221.5	4.5
Morgan	1	7	20	7	26	26	2.9	1.3	769.2
Piute	—	—	—	—	—	—	—	—	—
Rich	1	7	20	—	—	—	2.9	—	—
Salt Lake	2	13	92	222	353	3795	7.1	41.3	24.2
Sanpete	4	26	79	98	556	1832	3.0	23.2	43.1
Sevier	—	—	—	—	—	—	—	—	—
Summit	2	13	72	72	438	3971	5.5	55.2	18.1
Utah	5	33	177	576	975	19,922	5.4	112.6	8.9
Wasatch	4	26	46	144	294	1472	1.8	32.0	31.3
Weber	3	20	111	150	1021	6026	5.6	54.3	18.4
Rocky Mountain totals	28	184	676	1531	4853	48,442	3.7	71.7	14.0
Daggett	2	13	13	20	216	412	1.0	31.7	31.6
Duchesne	3	20	164	98	504	3088	8.2	18.8	53.1
Uintah	7	46	694	916	4227	257,224	15.1	370.6	2.7
Uintah Basin totals	12	79	871	1034	4947	260,724	11.0	299.3	3.3
Carbon	2	13	39	118	877	8754	3.0	224.5	4.5
Emery	1	7	0	33	393	1963	0.0	—	0.0
Garfield	1	7	26	275	393	16,487	3.7	634.1	1.6
Grand	2	13	13	170	321	7387	1.0	568.2	1.8
Kane	1	7	13	79	137	1649	1.9	126.8	7.9
San Juan	2	13	79	46	190	648	6.1	8.2	121.9
Washington	3	20	39	209	366	6058	2.0	155.3	6.4
Wayne	1	7	26	33	131	654	3.7	25.2	39.8
Colorado Plateau totals	13	87	235	963	2808	43,600	2.7	185.5	5.4
Unknown	—	—	—	—	—	—	—	—	—
Statewide totals	62	406	1874	—	—	—	4.6	196.3	5.1

\*Statewide totals for sample size and trappers afield are not totals of the columns because trappers trapped multiple counties.

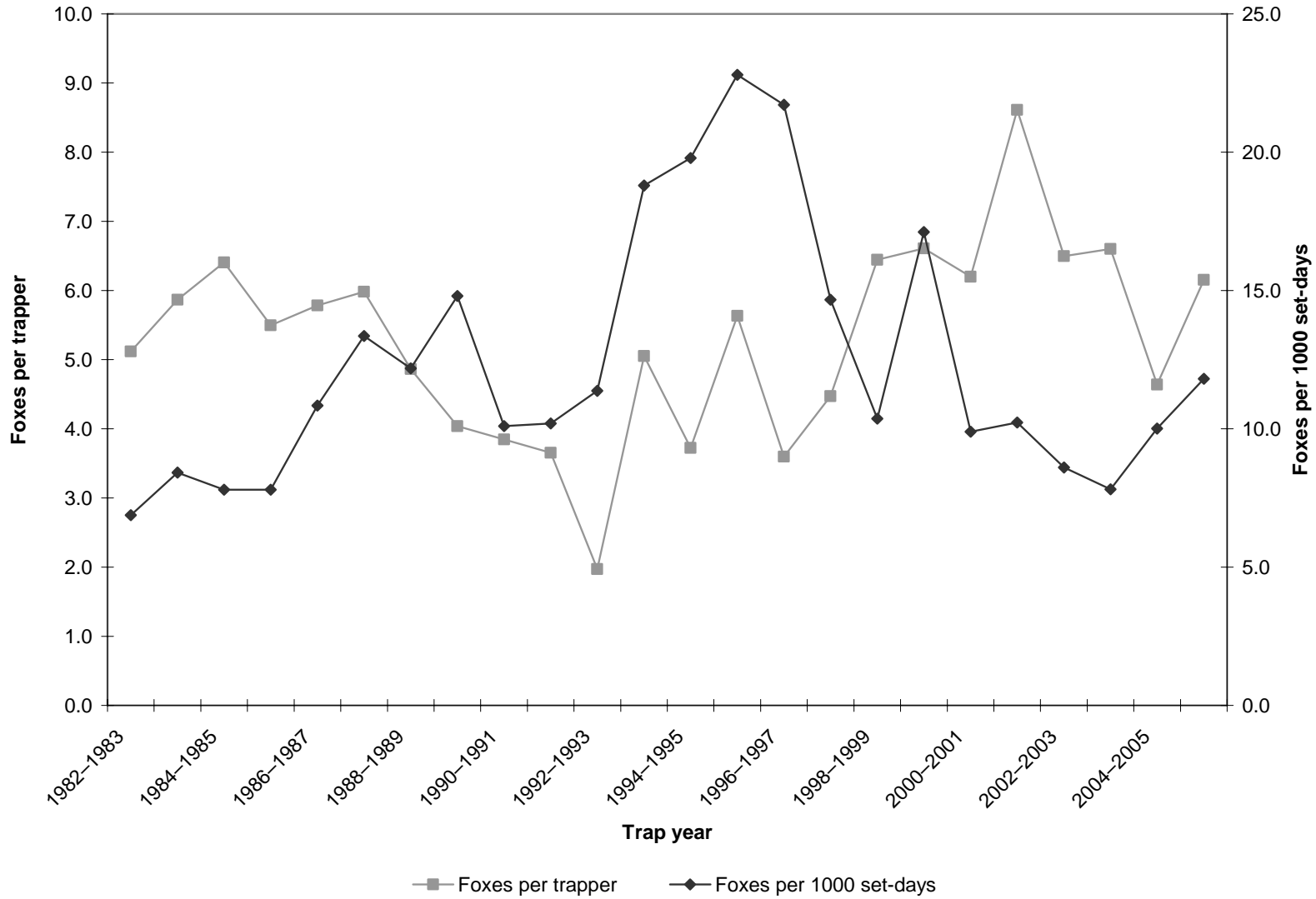
\*\*Due to outliers in the data, statewide set-days could not be calculated. Set-days per fox and foxes per 1000 set-days were calculated after removing outliers.

# GRAY FOX

Statewide gray fox harvest statistics, Utah 1983–2006.

Trap year	Trappers afield	Harvest	Set-days	Foxes / trapper	Set-days / fox	Foxes / 1000 set-days	Pelt price (\$)
1982–1983	263	1346	195,772	5.1	145.4	6.9	27.75
1983–1984	233	1367	162,394	5.9	118.8	8.4	25.13
1984–1985	305	1954	250,538	6.4	128.2	7.8	24.64
1985–1986	256	1407	180,454	5.5	128.3	7.8	15.03
1986–1987	252	1457	134,458	5.8	92.3	10.8	25.29
1987–1988	273	1633	122,271	6.0	74.9	13.4	21.91
1988–1989	226	1099	90,214	4.9	82.1	12.2	13.50
1989–1990	233	941	63,576	4.0	67.6	14.8	6.19
1990–1991	65	250	24,768	3.8	99.1	10.1	8.24
1991–1992	110	402	39,445	3.7	98.1	10.2	6.87
1992–1993	214	422	37,108	2.0	87.9	11.4	7.08
1993–1994	136	687	36,563	5.1	53.2	18.8	12.00
1994–1995	207	771	38,957	3.7	50.5	19.8	9.62
1995–1996	147	828	36,319	5.6	43.9	22.8	10.65
1996–1997	102	367	16,904	3.6	46.1	21.7	11.60
1997–1998	87	389	26,515	4.5	68.2	14.7	7.76
1998–1999	135	870	83,913	6.4	96.5	10.4	6.96
1999–2000	140	925	54,044	6.6	58.4	17.1	6.62
2000–2001	187	1159	117,117	6.2	101.1	9.9	8.00
2001–2002	154	1326	129,687	8.6	97.8	10.2	11.58
2002–2003	299	1942	225,810	6.5	116.3	8.6	12.47
2003–2004	265	1749	223,814	6.6	128.0	7.8	10.84
2004–2005	203	942	94,102	4.6	99.9	10.0	13.81
2005–2006	98	603	51,051	6.2	84.7	11.8	24.15
Average	191	1035	101,491	5.4	98.1	10.2	13.65

Statewide gray fox harvest trends, Utah 1983–2006.



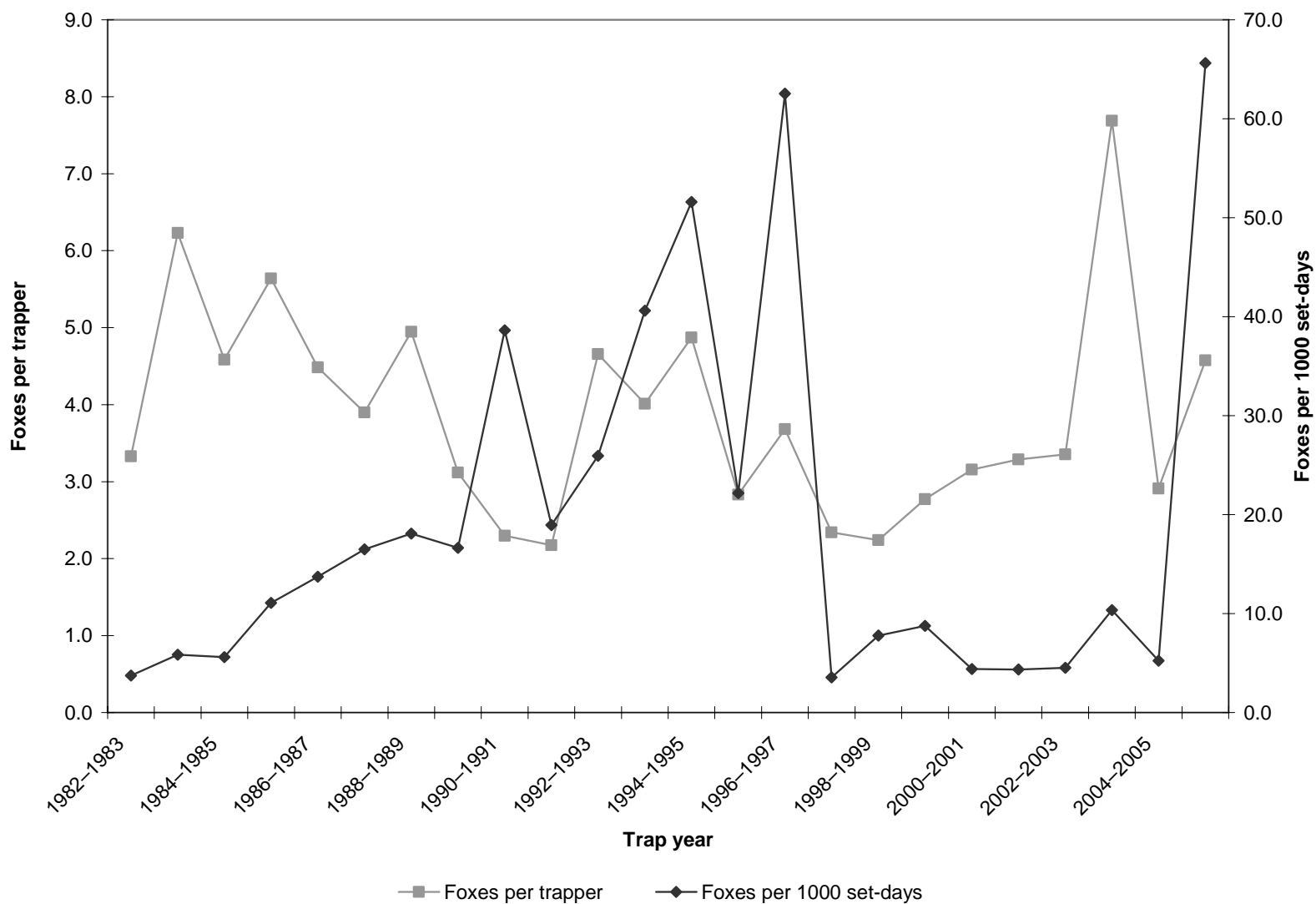
# KIT FOX

Statewide kit fox harvest statistics, Utah 1983–2006.

Trap year	Trappers afield	Harvest	Set-days	Foxes / trapper	Set-days / fox	Foxes / 1000 set-days	Pelt price (\$)
1982–1983	109	363	96,880	3.3	266.9	3.7	11.39
1983–1984	112	698	119,504	6.2	171.2	5.8	11.99
1984–1985	142	651	116,133	4.6	178.4	5.6	11.17
1985–1986	108	609	54,928	5.6	90.2	11.1	7.50
1986–1987	122	547	39,872	4.5	72.9	13.7	9.90
1987–1988	138	538	32,630	3.9	60.7	16.5	10.69
1988–1989	130	643	35,528	4.9	55.3	18.1	6.98
1989–1990	117	365	21,926	3.1	60.1	16.6	3.19
1990–1991	81	186	4815	2.3	25.9	38.6	4.67
1991–1992	86	187	9869	2.2	52.8	18.9	2.78
1992–1993	41	191	7363	4.7	38.5	25.9	4.30
1993–1994	75	301	7415	4.0	24.6	40.6	4.69
1994–1995	109	531	10,292	4.9	19.4	51.6	6.45
1995–1996	77	218	9826	2.8	45.1	22.2	6.25
1996–1997	44	162	2591	3.7	16.0	62.5	6.77
1997–1998	41	96	27,046	2.3	281.7	3.5	3.50
1998–1999	75	168	21,557	2.2	128.3	7.8	7.31
1999–2000	66	183	20,890	2.8	114.2	8.8	2.90
2000–2001	51	161	36,574	3.2	227.2	4.4	6.13
2001–2002	52	171	39,215	3.3	229.3	4.4	10.72
2002–2003	90	302	66,826	3.4	221.3	4.5	5.44
2003–2004	83	638	61,572	7.7	96.5	10.4	5.38
2004–2005	89	259	49,454	2.9	190.9	5.2	8.98
2005–2006*	40	183	—	4.6	15.2	65.6	10.92
Average	87	348	38,813	4.0	111.5	9.0	7.08

\*Due to outliers in the data, statewide set-days could not be calculated. Set-days per fox and foxes per 1000 set-days were calculated after removing outliers.

Statewide kit fox harvest trends, Utah 1983–2006.

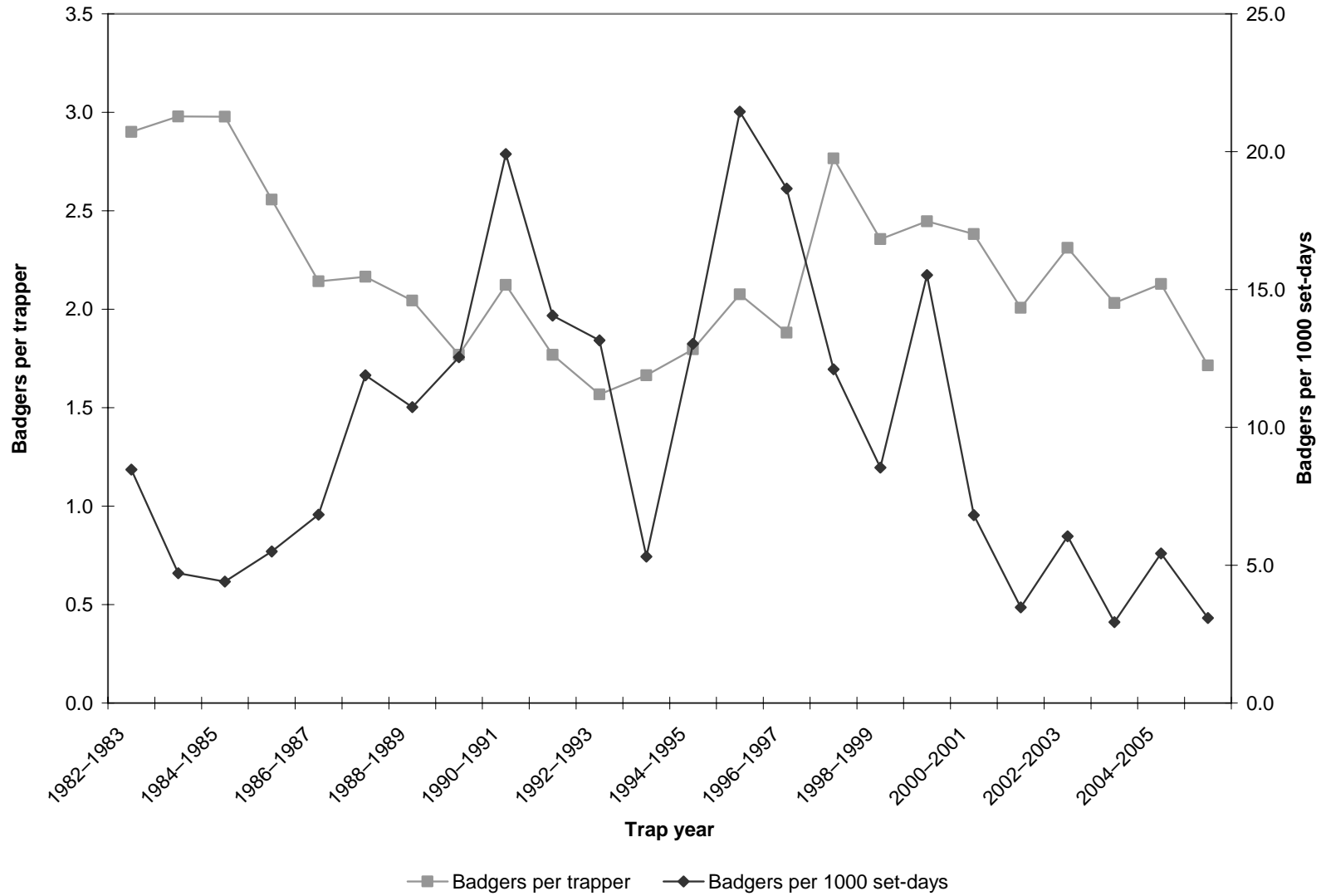


## BADGER

Statewide badger harvest statistics, Utah 1983–2006.

Trap year	Trappers afield	Harvest	Set-days	Badgers / trapper	Set-days / badger	Badgers / 1000 set-days	Pelt price (\$)
1982–1983	250	725	85,622	2.9	118.1	8.5	8.20
1983–1984	188	560	118,858	3.0	212.3	4.7	8.56
1984–1985	225	670	152,179	3.0	227.1	4.4	10.14
1985–1986	194	496	90,234	2.6	181.9	5.5	3.96
1986–1987	198	424	62,035	2.1	146.3	6.8	7.64
1987–1988	212	459	38,624	2.2	84.1	11.9	6.04
1988–1989	204	417	38,836	2.0	93.1	10.7	4.66
1989–1990	207	366	29,175	1.8	79.7	12.5	4.78
1990–1991	81	172	8636	2.1	50.2	19.9	7.27
1991–1992	134	237	16,863	1.8	71.2	14.1	8.50
1992–1993	148	232	17,631	1.6	76.0	13.2	9.95
1993–1994	143	238	44,779	1.7	188.1	5.3	7.18
1994–1995	182	327	25,082	1.8	76.7	13.0	13.93
1995–1996	133	276	12,869	2.1	46.6	21.4	10.52
1996–1997	118	222	11,897	1.9	53.6	18.7	13.01
1997–1998	98	271	22,378	2.7	82.6	12.1	6.59
1998–1999	135	318	37,220	2.4	117.0	8.5	16.96
1999–2000	177	433	27,896	2.4	64.4	15.5	13.04
2000–2001	189	450	65,997	2.4	146.7	6.8	17.18
2001–2002	137	275	79,151	2.0	287.8	3.5	15.60
2002–2003	234	541	89,476	2.3	165.4	6.0	13.73
2003–2004	223	453	154,343	2.0	340.7	2.9	18.72
2004–2005	203	432	79,629	2.1	184.3	5.4	13.66
2005–2006	70	120	38,838	1.7	323.7	3.1	15.02
Average	170	380	56,177	2.2	142.4	9.8	10.62

Statewide badger harvest trends, Utah 1983–2006.



# MARTEN

## Statewide marten harvest statistics, Utah 1983–1999.

Trap year	Trappers afield	Harvest	Set-days	Martens / trapper	Set-days / marten	Martens / 1000 set-days	Pelt price (\$)
1982–1983	1	1	6	1.0	6.0	166.7	10.00
1983–1984	9	84	4704	9.5	56.0	17.9	20.00
1984–1985	9	12	6516	1.4	543.0	1.8	24.00
1985–1986	10	121	7381	11.6	61.0	16.4	23.00
1986–1987	11	22	8558	2.0	389.0	2.6	25.68
1987–1988	10	50	9750	5.0	195.0	5.1	40.00
1988–1989	6	10	1210	1.7	121.0	8.3	31.00
1989–1990	—	—	—	—	—	—	—
1990–1991	—	—	—	—	—	—	—
1991–1992	—	—	—	—	—	—	—
1992–1993	—	—	—	—	—	—	—
1993–1994	—	—	—	—	—	—	—
1994–1995	—	—	—	—	—	—	—
1995–1996	—	—	—	—	—	—	—
1996–1997	13	2	—	0.2	—	—	20.00
1997–1998	—	—	—	—	—	—	11.00
1998–1999	12	6	1228	0.5	204.7	4.9	7.11
Average	9	34	4919	3.8	143.7	7.0	21.18

## Statewide marten harvest statistics, Utah 2000–2006.

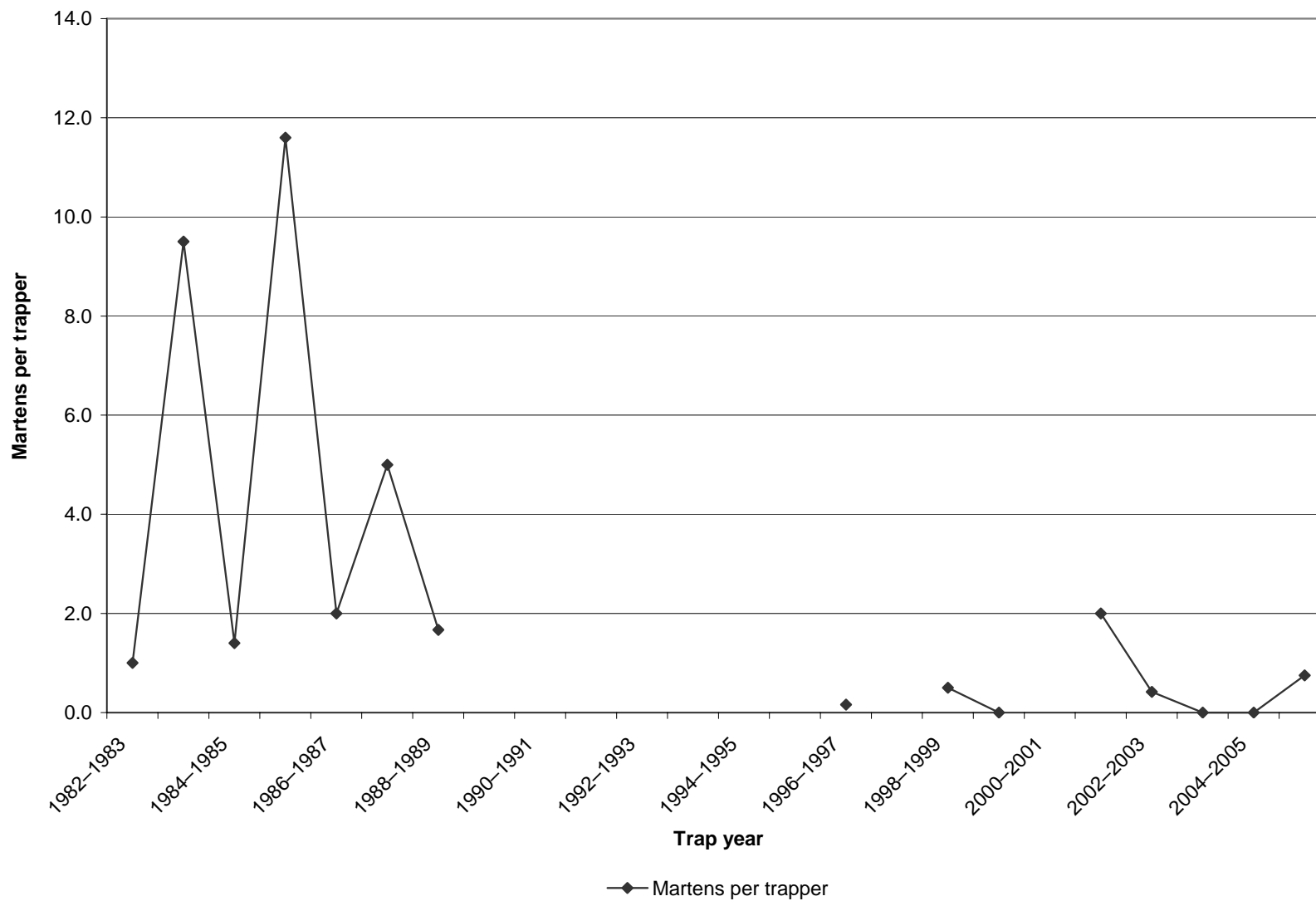
Trap year	Permits sold	Successful trappers	Male harvest	Female harvest	Total harvest	Success rate (%)**	Martens / trapper**
1999–2000	5	0	0	0	0	0.0	0.0
2000–2001	—	1	3	3	6	—	—
2001–2002	11	2	16	6	22	18.2	2.0
2002–2003	12	1	3	2	5	8.3	0.4
2003–2004	18	0	0	0	0	0.0	0.0
2004–2005	12	0	0	0	0	0.0	0.0
2005–2006*	16	2	7	4	12	12.5	0.8
Average	12	1	4	2	6	6.5	0.5

\*Includes one marten harvested of unknown sex.

\*\*Assumption: Every person who possessed a marten permit trapped or hunted.



Statewide marten harvest trends, Utah 1983–2006.

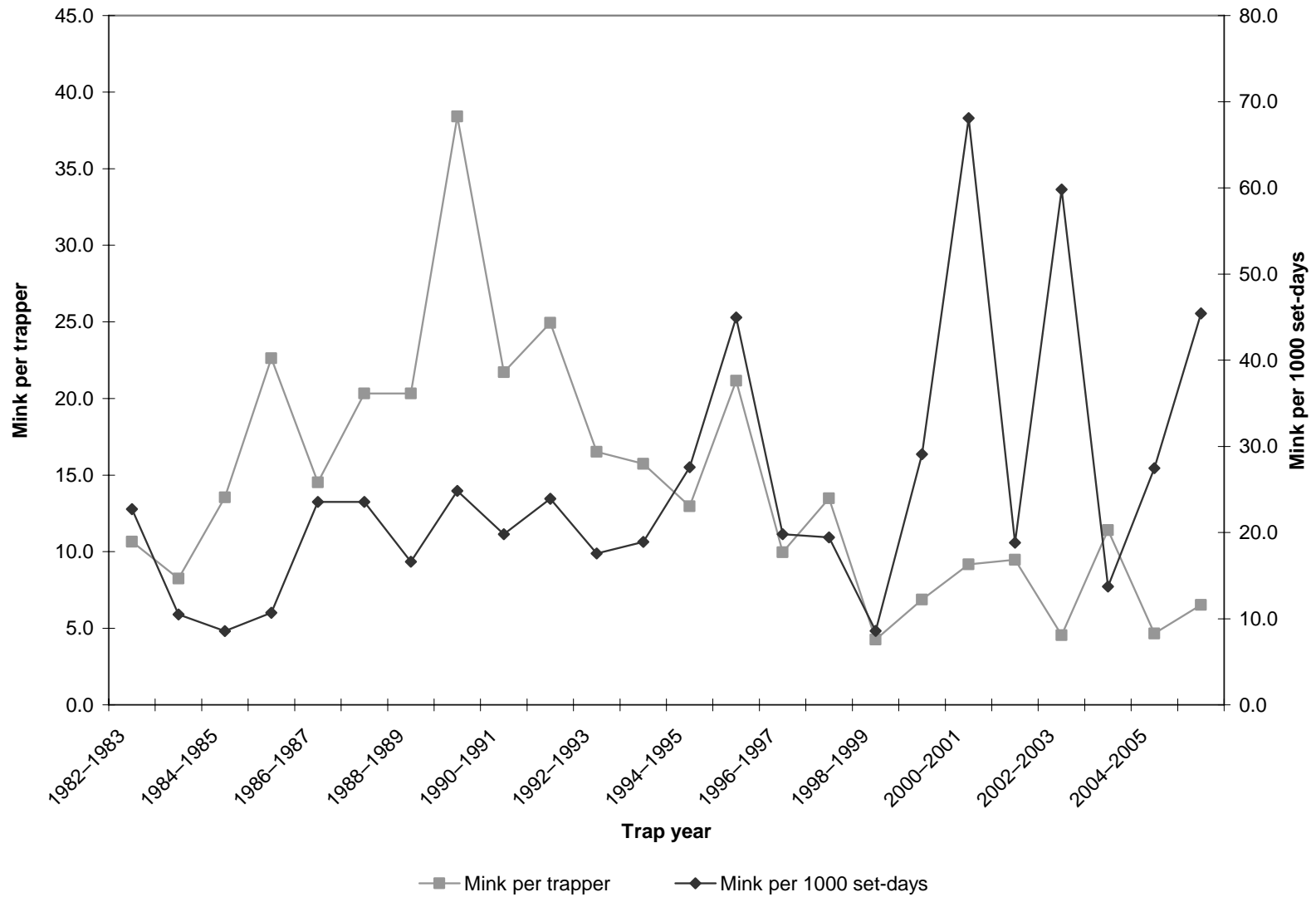


# MINK

Statewide mink harvest statistics, Utah 1983–2006.

Trap year	Trappers afield	Harvest	Set-days	Mink / trapper	Set-days / mink	Mink / 1000 set-days	Pelt price (\$)
1982–1983	38	405	17,841	10.7	44.1	22.7	10.85
1983–1984	46	379	36,144	8.2	95.4	10.5	9.13
1984–1985	40	542	63,252	13.6	116.7	8.6	10.27
1985–1986	37	837	78,306	22.6	93.6	10.7	6.00
1986–1987	57	828	35,135	14.5	42.4	23.6	10.63
1987–1988	51	1037	44,030	20.3	42.5	23.6	12.25
1988–1989	42	854	51,361	20.3	60.1	16.6	10.69
1989–1990	29	1114	44,850	38.4	40.3	24.8	6.30
1990–1991	25	543	27,406	21.7	50.5	19.8	6.33
1991–1992	29	723	30,219	24.9	41.8	23.9	6.81
1992–1993	23	380	21,615	16.5	56.9	17.6	7.50
1993–1994	30	472	24,958	15.7	52.9	18.9	8.41
1994–1995	27	350	12,695	13.0	36.3	27.6	8.38
1995–1996	25	529	11,767	21.2	22.2	45.0	10.40
1996–1997	27	269	13,583	10.0	50.5	19.8	10.95
1997–1998	25	337	17,339	13.5	51.5	19.4	5.81
1998–1999	81	345	40,110	4.3	116.3	8.6	7.11
1999–2000	61	419	14,408	6.9	34.4	29.1	6.07
2000–2001	51	468	6875	9.2	14.7	68.1	4.92
2001–2002	30	284	15,076	9.5	53.1	18.8	5.20
2002–2003	59	268	4481	4.5	16.7	59.8	2.07
2003–2004	59	673	49,004	11.4	72.8	13.7	8.00
2004–2005	68	317	11,540	4.7	36.4	27.5	8.98
2005–2006	34	222	4888	6.5	22.0	45.4	9.97
Average	41	525	28,203	12.7	53.7	18.6	8.04

Statewide mink harvest trends, Utah 1983–2006.



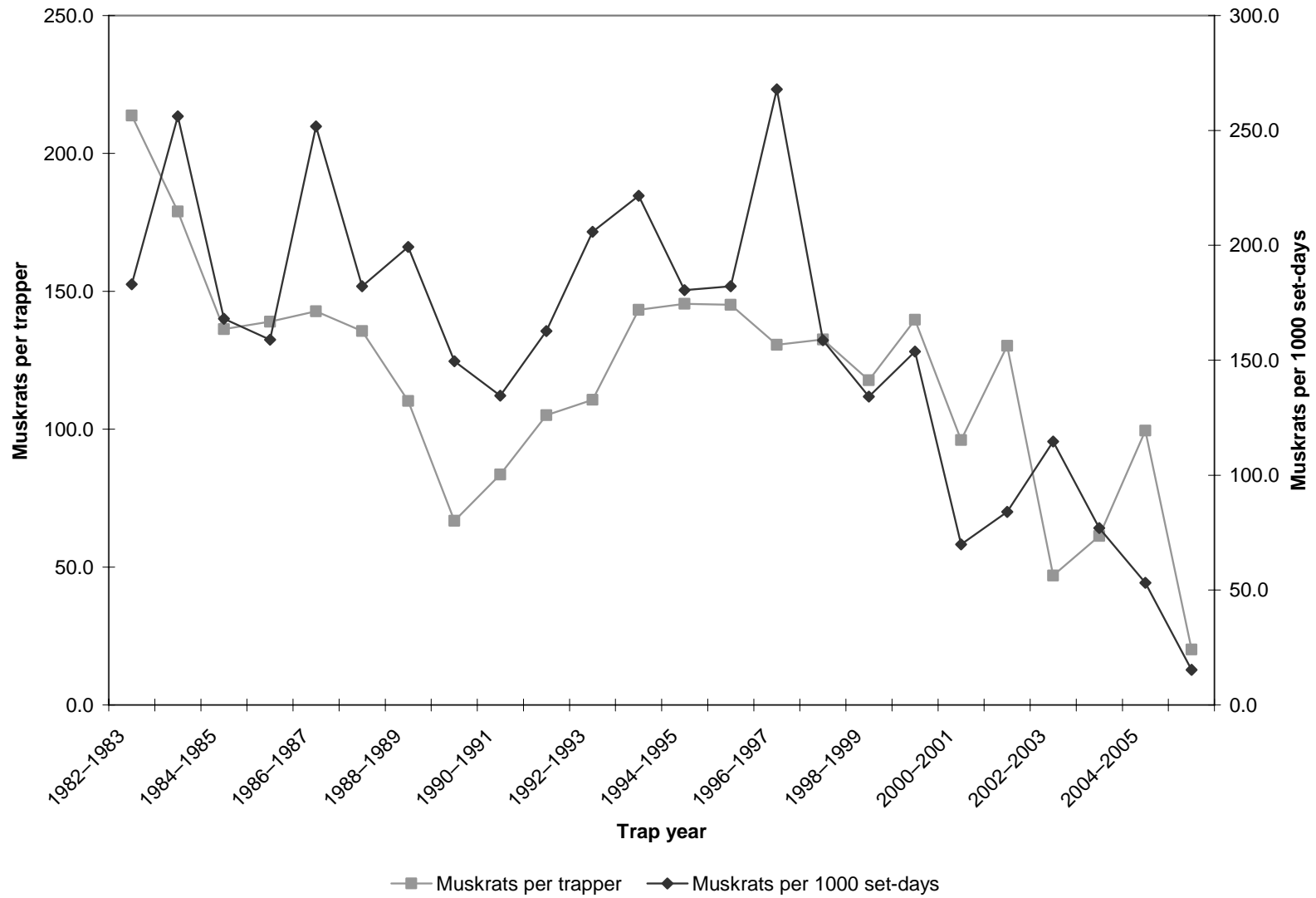
# MUSKRAT

Statewide muskrat harvest statistics, Utah 1983–2006.

Trap year	Trappers afield	Harvest	Set-days	Musk rats / trapper	Set-days / muskrat	Musk rats / 1000 set-days	Pelt price (\$)
1982–1983	258	55,137	301,146	213.7	5.5	183.1	2.16
1983–1984	309	55,298	215,836	179.0	3.9	256.2	2.46
1984–1985	400	54,526	324,435	136.3	6.0	168.1	2.45
1985–1986	282	39,195	246,641	139.0	6.3	158.9	1.86
1986–1987	416	59,368	235,861	142.7	4.0	251.7	2.66
1987–1988	432	58,560	321,448	135.6	5.5	182.2	2.46
1988–1989	303	33,400	167,542	110.2	5.0	199.4	1.40
1989–1990	253	16,898	112,946	66.8	6.7	149.6	0.89
1990–1991	85	7102	52,769	83.6	7.4	134.6	0.91
1991–1992	186	19,547	120,128	105.1	6.1	162.7	1.60
1992–1993	105	11,623	56,443	110.7	4.9	205.9	1.18
1993–1994	157	22,488	101,514	143.2	4.5	221.5	1.89
1994–1995	195	28,369	157,144	145.5	5.5	180.5	1.74
1995–1996	181	26,260	144,096	145.1	5.5	182.2	2.09
1996–1997	179	23,371	87,251	130.6	3.7	267.9	3.59
1997–1998	203	26,907	169,547	132.5	6.3	158.7	2.01
1998–1999	186	21,895	163,222	117.7	7.5	134.1	1.73
1999–2000	151	21,086	137,152	139.6	6.5	153.7	1.00
2000–2001	108	10,376	148,608	96.1	14.3	69.8	1.58
2001–2002	115	14,979	178,362	130.3	11.9	84.0	2.60
2002–2003	135	6334	55,261	46.9	8.7	114.6	1.59
2003–2004	176	10,777	139,915	61.2	13.0	77.0	1.57
2004–2005	151	15,016	282,593	99.4	18.8	53.1	1.57
2005–2006*	41	824	—	20.1	65.5	15.3	3.97
Average	209	26,639	170,429	127.7	6.4	156.3	1.96

\*Due to outliers in the data, statewide set-days could not be calculated. Set-days per fox and foxes per 1000 set-days were calculated after removing outliers.

Statewide muskrat harvest trends, Utah 1983–2006.

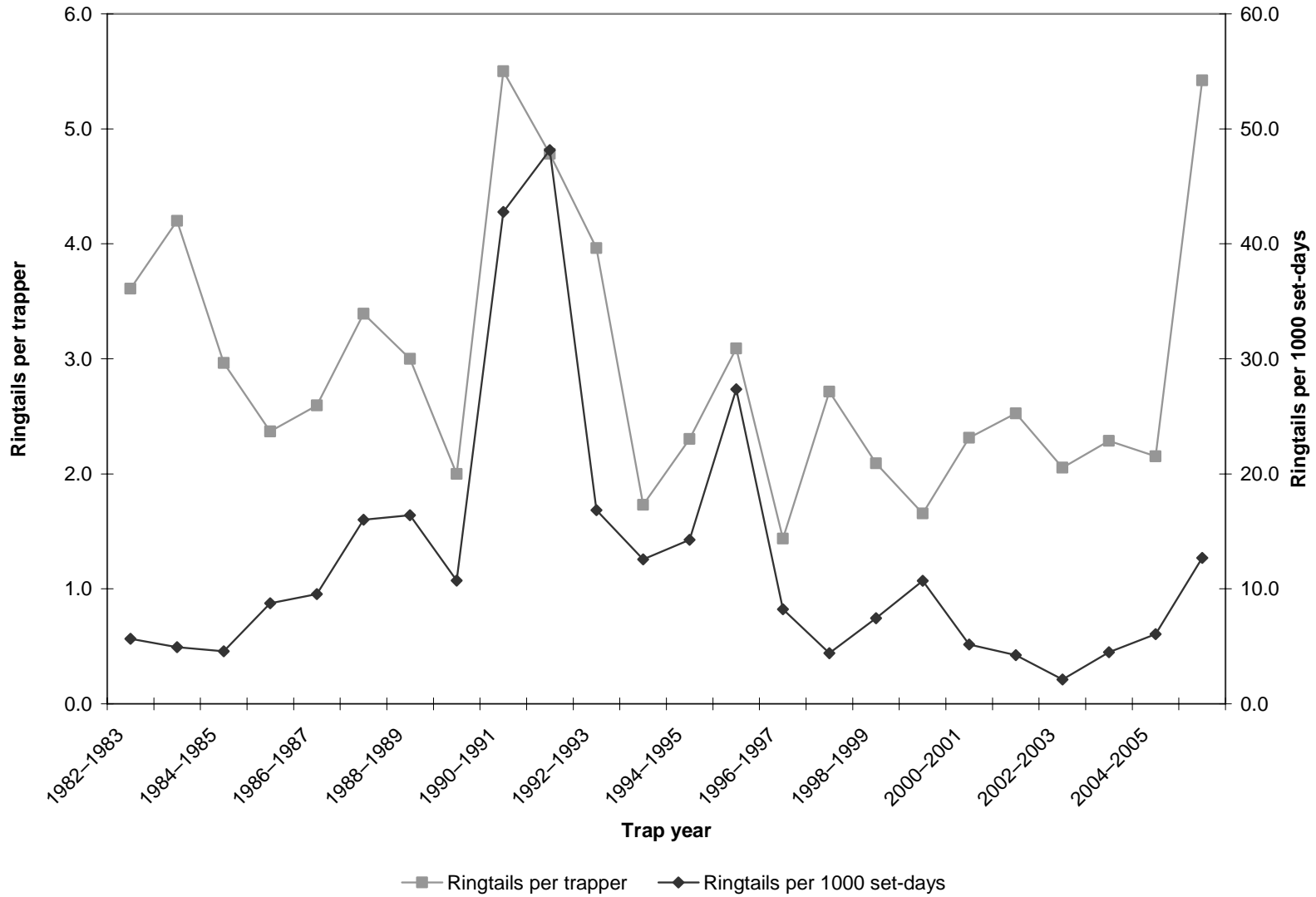


# RINGTAIL

Statewide ringtail harvest statistics, Utah 1983–2006.

Trap year	Trappers afield	Harvest	Set-days	Ringtails / trapper	Set-days / ringtail	Ringtails / 1000 set-days	Pelt price (\$)
1982–1983	90	325	57,319	3.6	176.4	5.7	4.40
1983–1984	90	378	76,599	4.2	202.6	4.9	3.96
1984–1985	85	252	54,987	3.0	218.2	4.6	3.15
1985–1986	68	161	18,398	2.4	114.3	8.8	2.69
1986–1987	79	205	21,456	2.6	104.7	9.6	3.64
1987–1988	79	268	16,748	3.4	62.5	16.0	2.40
1988–1989	62	186	11,335	3.0	60.9	16.4	5.70
1989–1990	66	132	12,313	2.0	93.3	10.7	2.65
1990–1991	18	99	2314	5.5	23.4	42.8	3.50
1991–1992	46	220	4570	4.8	20.8	48.1	3.22
1992–1993	27	107	6349	4.0	59.3	16.9	3.97
1993–1994	37	64	5096	1.7	79.6	12.6	4.04
1994–1995	69	159	11,141	2.3	70.1	14.3	6.41
1995–1996	44	136	4970	3.1	36.5	27.4	6.96
1996–1997	32	46	5597	1.4	121.7	8.2	11.68
1997–1998	21	57	12,919	2.7	226.6	4.4	2.99
1998–1999	66	138	18,510	2.1	134.1	7.5	4.17
1999–2000	61	101	9432	1.7	93.4	10.7	7.03
2000–2001	51	118	22,886	2.3	193.9	5.2	6.00
2001–2002	40	101	23,803	2.5	235.7	4.2	10.29
2002–2003	56	115	54,456	2.1	473.5	2.1	5.20
2003–2004	42	96	21,380	2.3	222.7	4.5	6.83
2004–2005	59	127	20,966	2.2	165.1	6.1	11.12
2005–2006	19	103	8115	5.4	78.8	12.7	9.31
Average	54	154	20,902	2.8	135.8	7.4	5.47

Statewide ringtail harvest trends, Utah 1983–2006.



# SKUNK

Statewide skunk harvest statistics, Utah 1983–2006.

Trap year	Trappers afield	Harvest	Set-days	Skunks / trapper	Set-days / skunk	Skunks / 1000 set-days	Pelt price (\$)
1982–1983	140	1540	30,862	11.0	20.0	49.9	3.00
1983–1984	144	1262	57,379	8.8	45.5	22.0	2.85
1984–1985	111	1097	47,084	9.9	42.9	23.3	2.17
1985–1986	195	1741	59,745	8.9	34.3	29.1	—
1986–1987	188	1851	42,416	9.8	22.9	43.6	—
1987–1988	185	2404	34,235	13.0	14.2	70.2	1.05
1988–1989	132	966	18,409	7.3	19.1	52.5	0.30
1989–1990	173	1289	20,279	7.5	15.7	63.6	0.30
1990–1991	82	645	8183	7.9	12.7	78.8	0.30
1991–1992	151	1037	18,802	6.9	18.1	55.2	4.00
1992–1993	132	922	29,638	7.0	32.1	31.1	5.30
1993–1994	175	1465	23,185	8.4	15.8	63.2	7.35
1994–1995	183	1438	24,744	7.9	17.2	58.1	9.29
1995–1996	175	1753	20,650	10.0	11.8	84.9	6.63
1996–1997	142	1726	25,728	12.2	14.9	67.1	6.00
1997–1998	182	2890	36,040	15.9	12.5	80.2	4.11
1998–1999	219	3227	58,578	14.7	18.2	55.1	5.67
1999–2000	188	2730	52,166	14.5	19.1	52.3	8.50
2000–2001	220	3857	113,545	17.5	29.4	34.0	8.69
2001–2002	214	1798	100,936	8.4	56.1	17.8	6.79
2002–2003	237	1732	72,927	7.3	42.1	23.7	4.24
2003–2004	295	2305	119,328	7.8	51.8	19.3	10.00
2004–2005	280	4264	148,611	15.2	34.9	28.7	4.64
2005–2006	129	1187	89,348	9.2	75.3	13.3	5.37
Average	178	1880	52,201	10.6	27.8	36.0	4.84

Statewide striped skunk harvest statistics, Utah 2006.

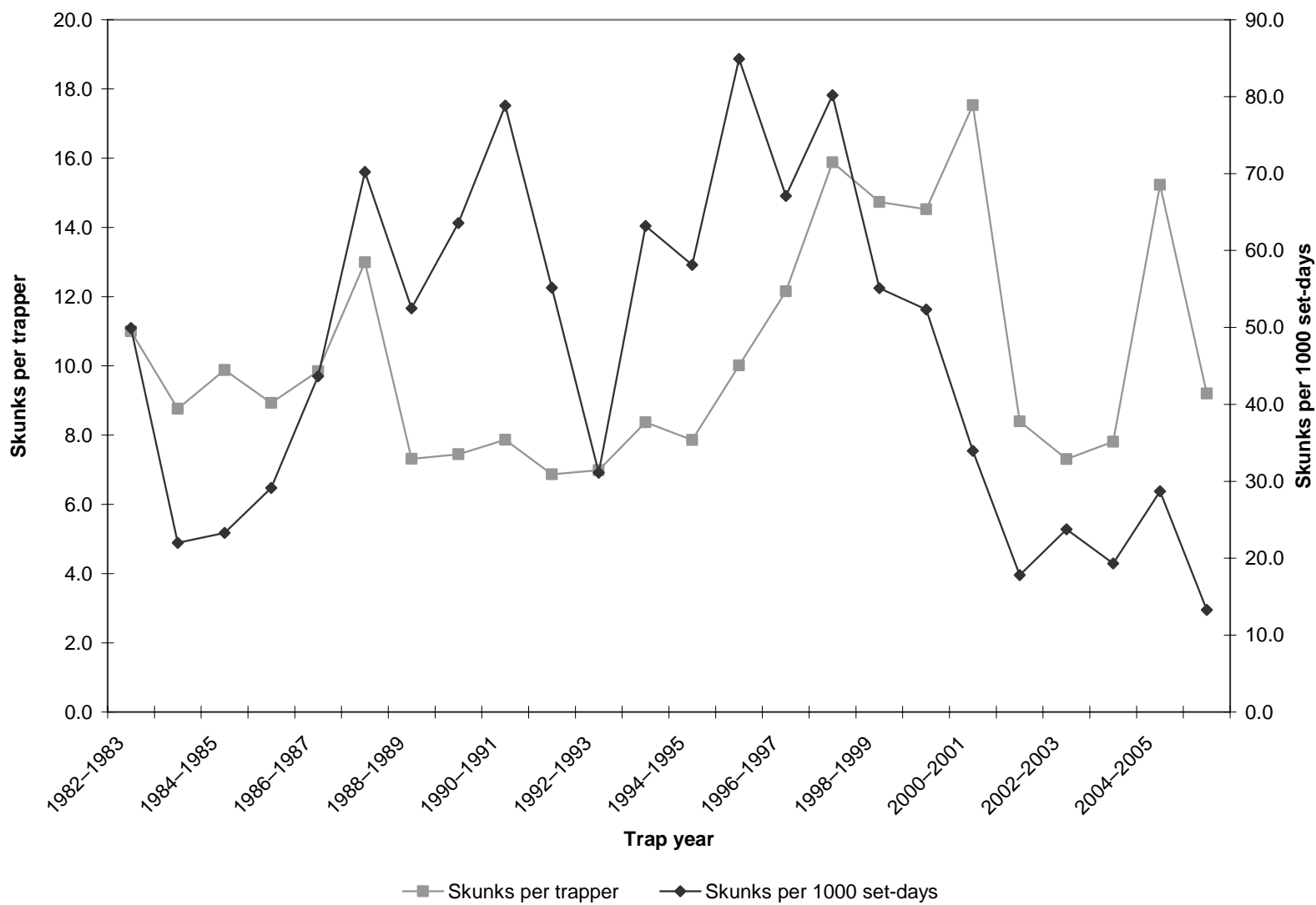
Trap year	Trappers afield	Harvest	Set-days	Skunks / trapper	Set-days / skunk	Skunks / 1000 set-days
2005–2006	95	1043	82551	11.0	79.1	12.6

Statewide spotted skunk harvest statistics, Utah 2006.

Trap year	Trappers afield	Harvest	Set-days	Skunks / trapper	Set-days / skunk	Skunks / 1000 set-days
2005–2006	34	144	6797	4.2	47.2	21.2



Statewide skunk harvest trends, Utah 1983–2006.



# WEASEL

Statewide weasel harvest statistics, Utah 1983–2006.

Trap year	Trappers afield	Harvest	Set-days	Weasels / trapper	Set-days / weasel	Weasels / 1000 set-days	Pelt price (\$)
1982–1983	19	59	959	3.1	16.3	61.5	1.00
1983–1984	22	33	3872	1.5	117.3	8.5	0.00
1984–1985	46	75	7956	1.6	106.1	9.4	0.75
1985–1986	33	67	9992	2.0	149.1	6.7	0.00
1986–1987	50	123	5205	2.5	42.3	23.6	1.50
1987–1988	61	212	5874	3.5	27.7	36.1	1.18
1988–1989	24	91	791	3.8	8.7	115.0	0.25
1989–1990	25	33	5492	1.3	166.4	6.0	0.25
1990–1991	14	31	1248	2.2	40.3	24.8	0.30
1991–1992	17	19	168	1.1	8.8	113.1	0.30
1992–1993	24	28	284	1.2	10.1	98.6	0.30
1993–1994	20	31	208	1.6	6.7	149.0	5.11
1994–1995	18	13	15,451	0.7	1188.5	0.8	1.57
1995–1996	24	299	20,482	12.5	68.5	14.6	3.08
1996–1997	11	13	312	1.2	24.0	41.7	7.40
1997–1998	20	28	3101	1.4	110.8	9.0	3.03
1998–1999	15	33	5190	2.2	157.3	6.4	5.50
1999–2000	34	66	1058	1.9	16.0	62.4	—
2000–2001	36	155	5288	4.3	34.1	29.3	8.50
2001–2002	6	13	0	2.2	0.0	—	—
2002–2003	6	3	118	0.5	39.3	25.4	4.76
2003–2004	18	58	4215	3.2	72.7	13.8	—
2004–2005	25	85	1935	3.4	22.8	43.9	2.90
2005–2006	41	190	8172	4.6	43.0	23.3	—
Average	19	59	959	3.1	16.3	61.5	2.38

Statewide weasel harvest trends, Utah 1983–2006.

