



Utah's Watershed Restoration Initiative

Restored rangelands benefit both the public and wildlife

Utah's Watershed Restoration Initiative (WRI) is a partnership-driven effort to conserve, restore and manage ecosystems in priority areas across the state. The WRI focuses on enhancing Utah's water quality and yield as well as its biological diversity. To achieve these results, WRI partners fund and perform physical and mechanical habitat manipulation, negotiate administrative changes in land management, and strengthen communication and team-building among the public and stakeholders.



These before-and-after photos show how habitat improved after vegetation treatments. The new plant growth benefits various species, including mule deer and sage-grouse.

Making a difference

Launched in 2005 and managed by the Utah Division of Wildlife Resources, the WRI has completed more than 700 projects and treated more than 600,000 acres. This partnership among state and federal agencies, conservation groups and private landowners has increased the scope and scale of ecosystem-improvement projects. At times, the WRI funding allocated by the Utah Legislature has been leveraged at a 9:1 ratio with funding from WRI partners.

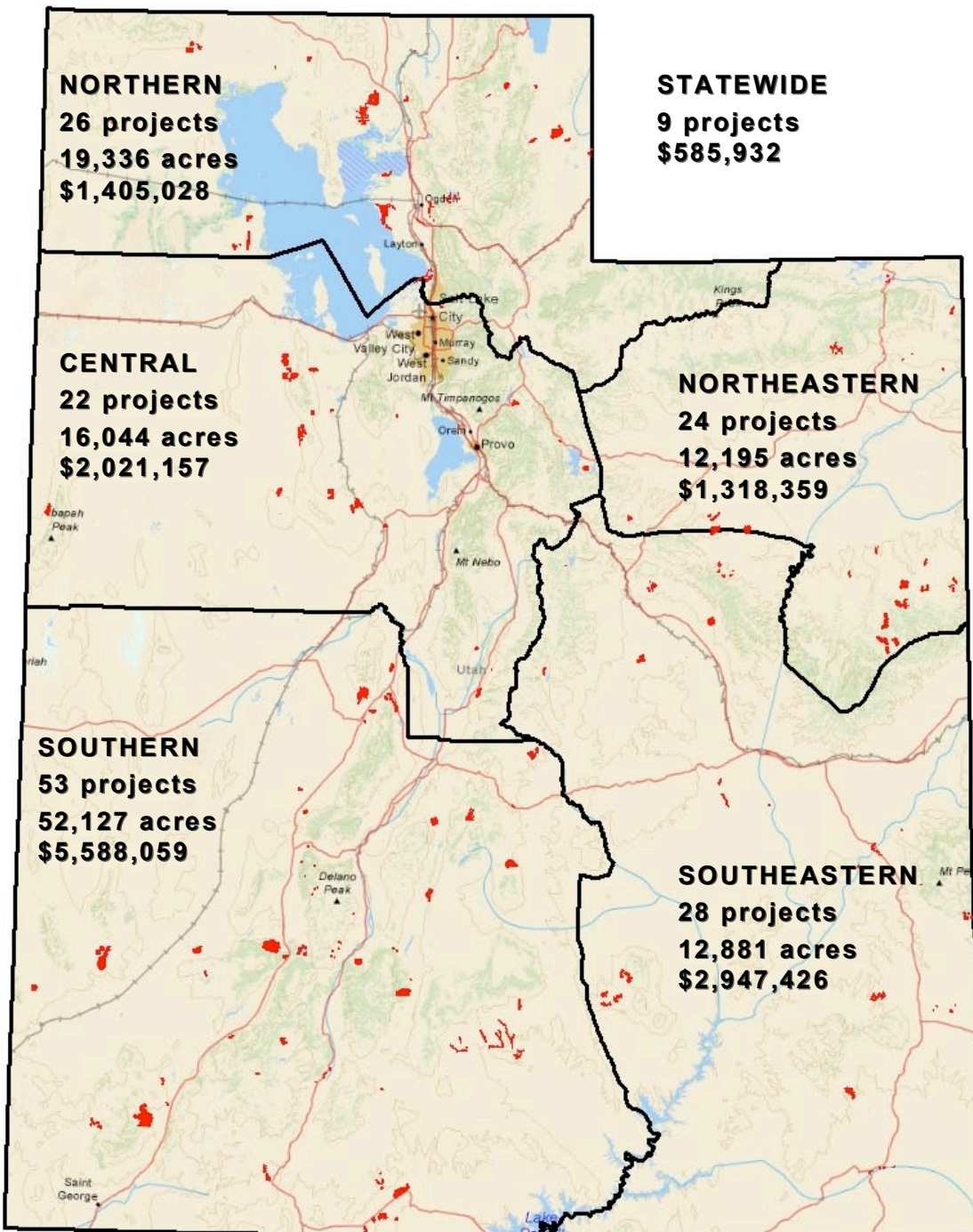
Benefiting the public

Why are healthy watersheds important? Among other things, they provide:

- Plenty of clean drinking water
- Irrigation for farms and ranches
- Clear streams and reservoirs for fishing
- Healthier rangeland that supports both livestock and wildlife
- Reduced risk of Endangered Species Act listings
- More hiring of local contractors, which helps rural economies
- Improved air quality
- Decreased fire frequency, intensity and suppression costs

Fiscal year 2010 projects

In fiscal year 2010, a total of \$13.9 million from the funding partners was spent on 162 projects, and approximately 112,500 acres were treated.



This map illustrates total projects, acres treated and project costs in each Watershed Restoration Initiative Administrative Region during fiscal year 2010. Projects with a defined footprint are shaded red.

— Published February 2, 2011