

UTAH FURBEARER ANNUAL REPORT 2010–2011



Publication No. 11-22



UTAH FURBEARER ANNUAL REPORT 2010–2011

Prepared by:

Heather H. Bernales
Biometrician

Justin Dolling
Game Mammals Program Coordinator

and

Kevin Bunnell
Mammals Program Coordinator

Publication No. 11-22

Annual Performance Report for Federal Aid Project W-65-M, segment 59

State of Utah
Department of Natural Resources
DIVISION OF WILDLIFE RESOURCES

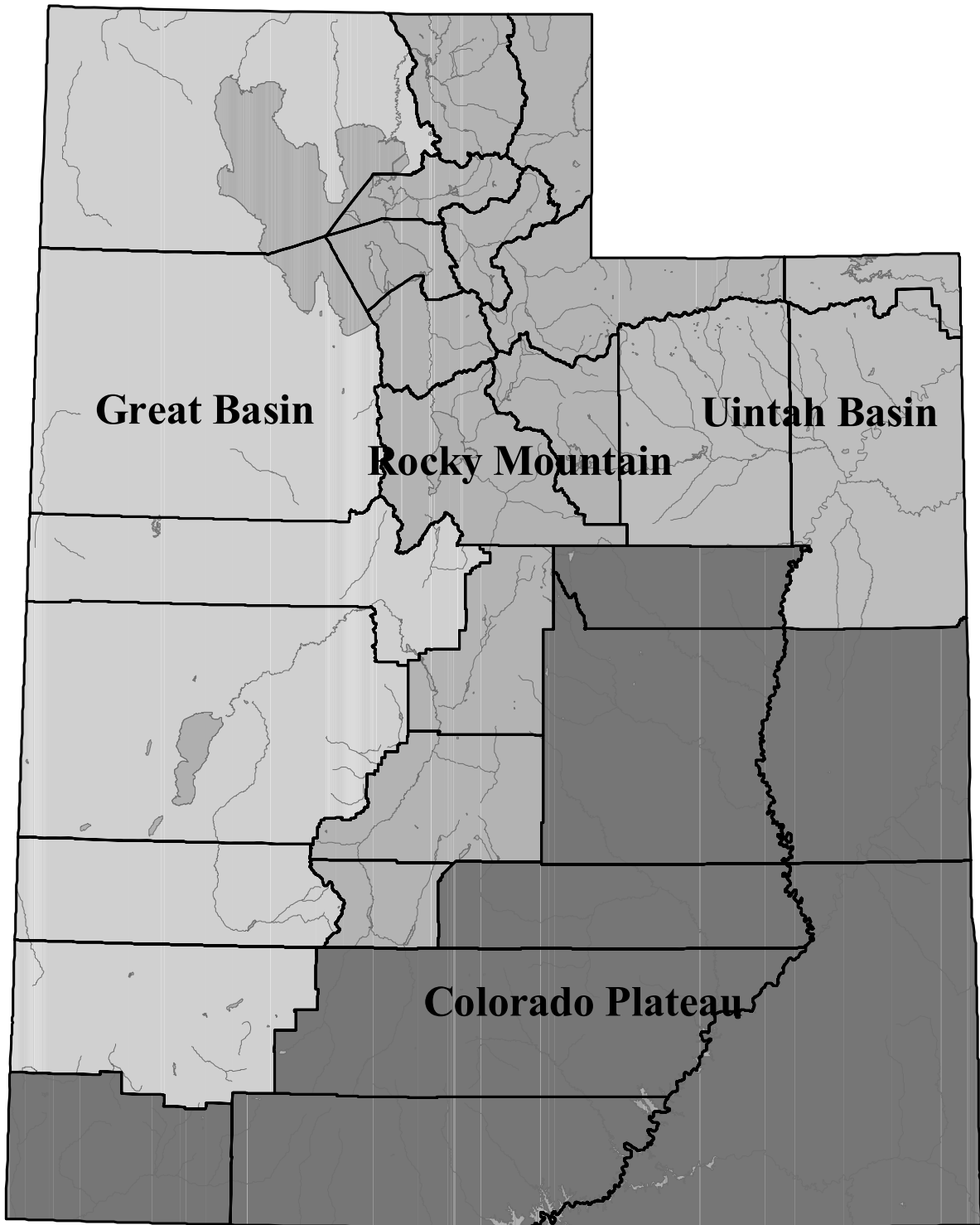
An Equal Opportunity Employer

James F. Karpowitz
Director

TABLE OF CONTENTS

Utah furbearer management units.....	1
Definitions.....	2
Introduction.....	3
Methods.....	3
Results.....	5
Harvest by species.....	13
Badger.....	14
Beaver.....	17
Bobcat.....	20
Coyote.....	30
Gray Fox.....	34
Kit Fox.....	37
Red Fox.....	39
Marten.....	43
Mink.....	45
Muskrat.....	48
Raccoon.....	51
Ringtail.....	55
Skunk.....	57
Weasel.....	61

UTAH FURBEARER MANAGEMENT UNITS



DEFINITIONS

Incidental harvest: Furbearers harvested in traps that were intended for a different furbearer species.

Trap year: Year during which a particular trapping season ended. For example, for simplification in figures, trap year 2011 corresponds to the 2010–2011 furbearer season as outlined in the 2010–2011 Furbearer Guidebook.

Total trappers: Number of furbearer license holders who trapped furbearers during a particular trap year. License holders who took furbearers by means other than trapping, including shooting or with the aid of dogs, are included in this figure except for bobcat, coyote, and raccoon.

Total harvest: Number of furbearers of a particular species taken by means of trapping and hunting by furbearer license holders. This figure does not include harvest of unprotected wildlife, such as coyote, muskrat, red fox, raccoon, or striped skunk, by persons who did not purchase a furbearer license, nor does it include harvest of furbearers taken for creating a nuisance or causing damage.

Total set-days: Number of traps set during the furbearer season for the trapping of a particular species, multiplied by the number of days these traps were in the field. This figure pertains only to trapping, and does not include days afield by furbearer hunters or pursuers.

Pelt price: Average price paid for pelts of a specific furbearer species harvested in Utah, obtained mainly from a summary of the prices bid at the Utah Trappers Association fur auction, as well as prices from a survey of registered furdealers buying pelts harvested in Utah.

Wildlife Services harvest (coyote only): Number of coyotes killed by USDA-APHIS Wildlife Services in a particular year. Prior to 2006-2007, Wildlife Services yearly harvest summaries applied to their fiscal year, which begins October 1 and ends September 30, although most harvest takes place during spring. Beginning in 2006-2007, Wildlife Services harvest is reported for the period July 1 to June 30 of the following year.

INTRODUCTION

The furbearer harvest report presents furbearer harvest and trapper/hunter effort trends across the state of Utah, based on data collected from furbearer trappers and hunters. This report represents the furbearer portion of the Annual Performance Report for Federal Aid Project W-65-M, segment 59, grant agreement period October 1, 2010 through September 30, 2011. This Federal Aid project covers the 2010–2011 trapping seasons. Additionally, this report presents statewide trends since the early 1980s and population trend indicators for bobcats as well as the estimated economic value of Utah’s furbearer harvest each year. Furbearer harvest and trapper/hunter effort may be more driven by pelt price than by availability, so annual fur harvest should not be used as the sole means to assess/project population sizes.

Bag Limits and Season Dates

Furbearers include badger, beaver, bobcat, gray fox, kit fox, mink, marten, ringtail, spotted skunk, and weasel, and a furbearer license is required to harvest any of these species, during the specified harvest season. An additional permit is required to harvest bobcat or marten. Coyote, muskrat, red fox, raccoon, and striped skunk are not under the jurisdiction of the Division, and/or are unprotected. Those species may be taken year-round without a license; therefore, results presented in this report do not include harvest by persons who did not purchase a furbearer license. It is prohibited to take black-footed ferret, fisher, lynx, otter, wolf, and wolverine. There are no bag limits for furbearers, except bobcats.

Furbearer season dates and bobcat possession limit, Utah 2010–2011 seasons.

Season	Bobcat possession limit	Season dates			
		Coyote, Red Fox, Muskrat, Raccoon, Striped Skunk	Badger, Kit Fox, Gray Fox, Ringtail, Spotted Skunk, Weasel, Marten	Beaver and Mink	Bobcat
2010-2011	3	Year-round	10/02/10–2/06/11	10/02/10–4/10/11	12/01/10–2/06/11

METHODS

Furbearer Harvest Survey

In 2006, the Utah Division of Wildlife Resources switched from a mail questionnaire to a telephone survey. Telephone surveys are thought to be better than mail questionnaire because they achieve a more random sample, thus, reducing the response bias caused by trappers who did not harvest animals not returning their questionnaires. Telephone surveys also allow you contact a smaller number of license holders to achieve the same level of accuracy. The accuracy of that phone survey is dependent upon the following assumptions: (1) a random sample was achieved (i.e. there was no response bias by those who harvested successfully versus those who did not), (2) respondents recorded or remembered data accurately and did not guess or lie, and (3) respondents clearly understood the questions.

For bobcats, we determined the total number of bobcat trappers/hunters who were surveyed, and this number was projected by the total number of furbearer trappers/hunters who purchased one or more bobcat permits. For bobcats and martens, it was required by proclamation that the pelts of animals harvested in Utah be brought to a Division office or officer to have a permanent tag attached and to surrender the lower jaw. Bobcat and marten harvest data presented in this report, such as county of kill and sex of harvest, were collected at this time; as such, this information is not projected. Additional information on bobcat harvest, such as harvest effort by method, number of sets, and number of days was determined by telephone survey. Due to the small number of marten trappers in Utah, we did not attempt to survey marten trappers. Instead, since a separate permit is required to trap marten, we assumed that all those who purchased a marten permit attempted to trap marten.

In an effort to obtain information on how many furbearers of a given species were taken incidentally, furbearer trappers were asked the question “Did you harvest any (species) in traps that were set for a different species, and, if so, how many?” Prior to 2010, all incidental take was included in the total harvest and harvest effort statistics. Beginning in 2010, the harvest survey was adjusted so that incidental take could be separated from the rest of the furbearer harvest and effort statistics. Therefore, 2010 harvest and effort statistics do not include incidental take (unless specified otherwise).

Data Analysis

When dealing with survey data, it is not uncommon to have outliers (i.e., data that do not fall within realistic values). A repeated problem in the furbearer survey was having a trapper report a high harvest with little trap effort (i.e. 10 furbearers harvest with 1 trap set for 1 day). For this situation we assumed that the total harvest was reported correctly, but the trapping effort was either reported or recorded erroneously. By doing so, these data records were included in the total statewide harvest of a furbearer species, but the total statewide number of traps set, trapping days and set-days could not be determined. To obtain estimates of furbearers/trapper, set-days/furbearer, and furbearers/1000 set-days, we used the remaining data points, excluding outliers.

Because some furbearer species in Utah are rare or not highly sought after by trappers, it is not possible to achieve sufficient sample sizes for these species to make valid statistical inferences. Although the trends for statewide harvest and effort are still valid, at the county level, the harvest and effort estimates have low precision and are likely inaccurate. As such, results by county are only reported for species with a sample size ≥ 20 .

Bobcat Age Determination and Other Data Methods

To determine age structure of the bobcat harvest, a canine tooth from each bobcat jaw was sectioned, and aged using cementum annuli by Matson’s Lab in Milltown, Montana. Survival rates were estimated using the Chapman-Robson estimator. Pelt prices were obtained mainly from a summary of the prices bid at the Utah Trappers Association fur auction, as well as from a survey of registered furdealers buying pelts harvested in Utah.

RESULTS

License Sales and General Survey Results

Beginning December 1, 2005, furbearer licenses were valid for 365 days from the date of purchase. Because of this change, we used the 365-day period of May 1 to April 30 to determine the total number of furbearer licenses sold for the furbearer season. A total of 1,817 furbearer licenses were sold for the 2010-2011 season. The percentage of license holders who bought a furbearer license but did not attempt to harvest furbearers was 30%. The number of trappers afield in 2010-2011 was 1,270, which was slightly down from to the 10-yr average of 1,325.

Furbearer Harvest Statistics

Total estimated furbearer harvest for 2010–2011 was 31,731, which was slightly higher than the 10-yr average of 29,142, and higher than the previous 5 years. Most of the increase in harvest in 2011 was due to increased take of non-protected species—muskrat, raccoon, red fox, striped skunk—a trend observed over the last several years. Harvest of coyote, marten, mink, muskrat, raccoon, spotted skunk, and striped skunk were all above the 10-yr average, while badger, beaver, bobcat, gray fox, kit fox, red fox, ringtail, and weasel harvest were below.

Pelt Price and Economic Value

The estimated economic value of Utah's furbearer harvest in 2011 was \$794,368. Average pelt price was up for most furbearer species compared with 2010, specifically beaver, bobcat, coyote, gray fox, red fox, kit fox, mink, muskrat, raccoon, and ringtail.

Summary of furbearer license sales and survey responses, Utah 1983–2011.

Trap year	Furbearer licenses sold			License holders sampled		Projection factor	% license holders not afield
	Resident	Nonresident	Total	Total	Percent (%)		
1982–1983	—	—	1325	664	50.1	—	—
1983–1984	—	—	1367	616	45.1	—	—
1984–1985	—	—	1491	806	54.1	—	—
1985–1986	—	—	1424	680	47.8	—	—
1986–1987	—	—	1342	585	43.6	—	—
1987–1988	—	—	1576	731	46.4	—	—
1988–1989	—	—	1318	721	54.7	—	—
1989–1990	—	—	1084	597	55.1	—	—
1990–1991	—	—	949	513	54.1	—	30.0
1991–1992	—	—	1210	689	56.9	—	2.2
1992–1993	—	—	1426	857	60.1	—	16.0
1993–1994	—	—	1315	—	—	—	—
1994–1995	—	—	1287	585	45.5	—	7.0
1995–1996	—	—	1240	683	55.1	—	21.2
1996–1997	—	—	1131	606	53.6	—	25.4
1997–1998	—	—	1190	498	41.8	—	19.5
1998–1999	—	—	1191	395	33.2	—	19.8
1999–2000	1172	39	1211	458	37.8	2.64	11.6
2000–2001	1204	20	1224	420	34.3	2.91	12.4
2001–2002	956	21	977	302	30.9	3.24	11.6
2002–2003	1409	40	1449	514	35.5	2.82	16.3
2003–2004	1729	47	1776	597	33.6	2.97	16.9
2004–2005	1830	65	1895	615	32.5	3.08	18.2
2005–2006*	1631	57	1688	260	15.4	6.49	27.7
2006–2007	2029	81	2110	262	12.4	8.05	26.7
2007–2008	2085	55	2140	563	26.3	3.80	31.8
2008–2009	2045	57	2102	750	35.7	2.80	34.8
2009–2010	1902	34	1936	798	41.2	2.43	30.2
2010–2011	1788	29	1817	555	30.5	3.27	30.1
Average	1740	49	1789	522	29.4	3.90	24.4

*Starting in 2006, a telephone survey replaced the mail questionnaire. In 2010 only, the telephone harvest survey was supplemented with an additional Internet-based survey.

Statewide furbearer harvest estimates by species, Utah 2002–2011.

Species	Trap year										Average 2002–2011
	2002	2003	2004	2005	2006	2007	2008	2009	2010	2011	
Badger	275	541	453	432	120	*	275	287	334	309	336
Beaver	1689	1720	1781	2664	2239	*	745	1165	1910	1052	1663
Bobcat	1866	2176	2027	1954	2926	3377	2437	2062	1167	1002	2099
Coyote	4354	5446	6660	7173	4229	*	7637	6945	6674	8128	6361
Gray fox	1326	1942	1749	942	603	*	1093	1747	1392	907	1300
Kit fox	171	302	638	259	183	*	39	104	51	45	199
Red fox	3192	4399	4639	4674	1874	*	1130	872	2657	2864	2922
Marten	22	5	0	0	12	7	21	4	2	36	11
Mink	284	268	673	317	222	*	186	242	395	636	358
Muskrat	14979	6334	10777	15016	824	*	1665	1198	5505	7698	7111
Raccoon	3785	4001	5634	6405	3298	*	3990	2368	5018	5946	4494
Ringtail	101	115	96	127	103	*	108	59	109	62	98
Skunk (total)	1798	1732	2305	4264	—	*	—	—	—	—	2525
Spotted skunk	—	—	—	—	144	*	45	238	116	276	164
Striped skunk	—	—	—	—	1043	*	848	1697	3270	2733	1918
Weasel	13	3	58	85	190	*	15	11	60	37	52
Total	33855	28984	37490	44312	18010	*	20234	18999	28660	31731	29142

Prior to the 2005–2006 trap season, spotted skunk and striped skunk harvest were not split out.

*Due to errors in the 2006-2007 furbearer season telephone survey, harvest and effort data is unavailable for all species but bobcat and marten.

Statewide furbearer trapping harvest statistics* by species, Utah 2011.

Species	Trappers afield	Trap harvest	Set-days	Set-days / furbearer	Furbearers / 1000 set-days	Furbearers / trapper	Pelt price (\$)
Badger	115	194	6797	35	28.5	1.7	17.27
Beaver	144	1039	34854	34	29.8	7.2	12.76
Bobcat	771	846	416474	49	2.0	1.1	368.95
Coyote	384	4356	411234	94	10.6	11.3	25.00
Gray fox	138	651	58725	90	11.1	4.7	20.97
Kit fox	20	42	1735	41	24.2	2.1	12.68
Red fox	285	2435	203511	84	12.0	8.5	22.62
Marten	31	36	—	—	—	—	27.00
Mink	65	485	51806	107	9.4	7.5	11.27
Muskrat	141	7361	174285	24	42.2	52.2	5.40
Raccoon	236	3958	109833	28	36.0	16.8	8.17
Ringtail	16	36	12807	356	2.8	2.3	18.91
Spotted skunk	33	76	5425	71	14.0	2.3	15.00
Striped skunk	154	1597	45693	29	35.0	10.4	5.29
Weasel	23	17	1329	78	12.8	0.7	7.21

*Does not include incidental harvest.

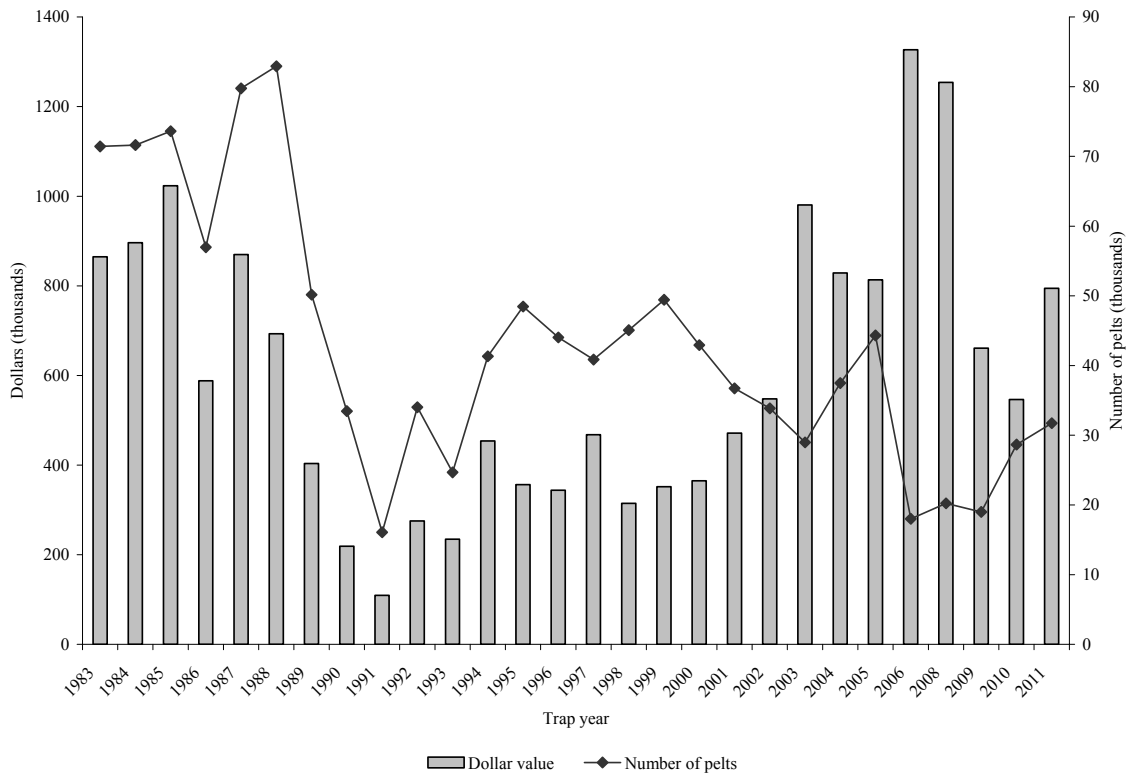
Statewide furbearer non-trapping harvest by species, Utah 2011.

Species	Hunters afield	Non-trap harvest	Hunting days	Days / furbearer	Furbearers / hunter
Bobcat	355	156	5888	38.0	0.4
Coyote	463	3480	14980	4.3	7.5
Raccoon	79	1417	1725	1.2	17.9
Red fox	105	213	1519	7.1	2.0

Number of furbearers harvested in traps set for other species, Utah 2011.

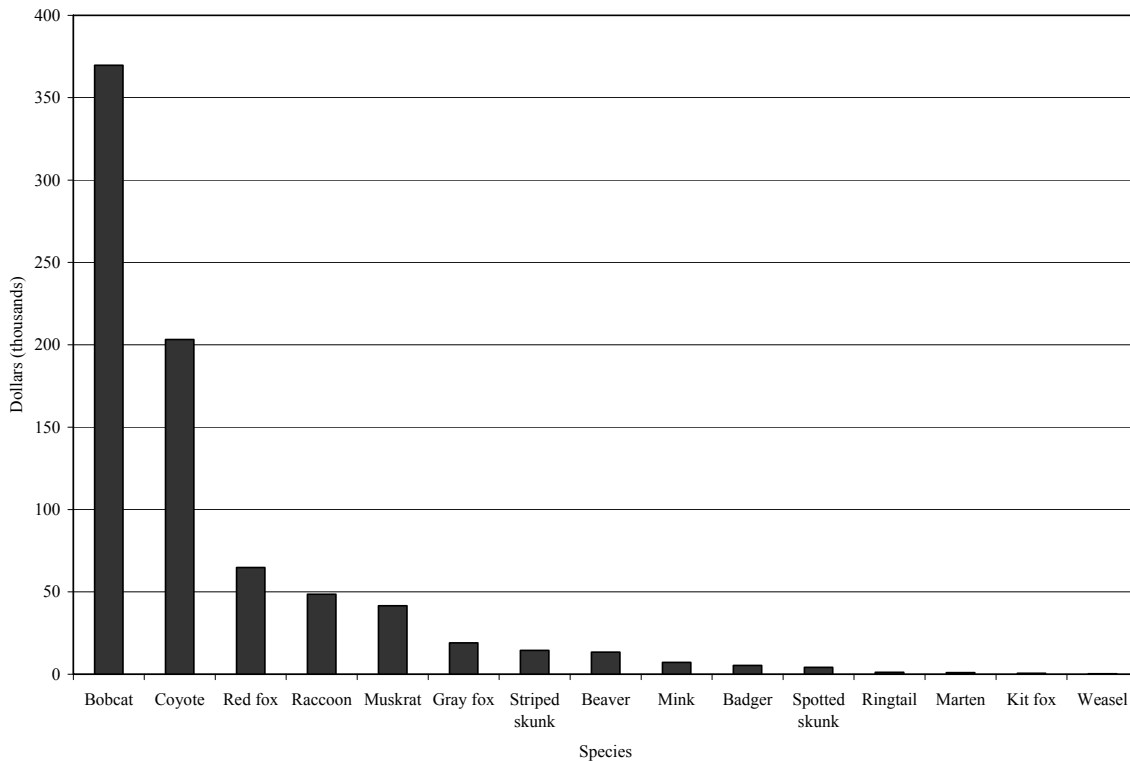
Species	Incidental harvest	Trap/hunt harvest	Total harvest	% incidental harvest
Badger	115	194	309	37.2
Beaver	13	1039	1052	1.2
Bobcat	121	1002	1002	12.1
Coyote	292	7836	8128	3.6
Gray fox	256	651	907	28.2
Kit fox	3	42	45	6.7
Red fox	216	2648	2864	7.5
Marten	0	36	36	0.0
Mink	151	485	636	23.7
Muskrat	337	7361	7698	4.4
Raccoon	571	5375	5946	9.6
Ringtail	26	36	62	41.9
Spotted skunk	200	76	276	72.5
Striped skunk	1136	1597	2733	41.6
Weasel	20	17	37	54.1
Total	3457	28395	31731	10.9

Estimated economic value of Utah's furbearer harvest, Utah 1983–2011.



*No data available for 2007.

Proportional economic value of Utah's furbearer harvest by species, Utah 2011.



Economic value* (in dollars) of furbearer species in Utah's annual furbearer harvest, Utah 1983–2011.

Trap year	Economic value (\$)														Total economic value (\$)
	Badger	Beaver	Bobcat	Coyote	Gray fox	Kit fox	Red fox	Marten	Mink	Muskrat	Raccoon	Ringtail	Skunk	Weasel	
1982–1983	5945	20418	434340	203240	37352	7244	16391	10	4394	119096	10526	1430	4620	59	865064
1983–1984	4794	25211	498960	152358	34353	8369	14869	1680	3460	136033	11105	1497	3597	0	896285
1984–1985	6794	43796	511464	193809	48147	7272	32220	288	4948	133589	18208	794	22126	56	1023511
1985–1986	1964	47463	301410	95322	21147	4568	21386	2783	5022	72903	13751	433	0	0	588152
1986–1987	3239	93684	316416	166417	36848	5415	49262	565	8802	157919	30439	746	0	185	869938
1987–1988	2772	69184	250635	107590	35779	5751	34765	2000	12703	144058	24645	643	2524	250	693300
1988–1989	1943	27264	230282	27104	14837	4488	16070	310	9129	46760	23932	1060	290	23	403492
1989–1990	1749	40991	85986	28913	5825	1164	17550	0	7018	15039	14242	350	387	8	219223
1990–1991	1250	10066	45849	20892	2060	869	12636	0	3437	6463	5375	347	194	9	109446
1991–1992	2015	13338	100672	65100	2762	520	39194	0	4924	31275	10729	708	4148	6	275390
1992–1993	2308	7399	105390	57740	2988	821	31635	0	2850	13715	4757	425	4887	8	234924
1993–1994	1709	16888	148962	128971	8244	1412	74511	0	3970	42502	15768	259	10768	158	454120
1994–1995	4555	32270	90536	65890	7417	3425	67159	0	2933	49362	18332	1019	13359	20	356277
1995–1996	2904	20502	71241	67722	8818	1363	74399	0	5502	54883	23516	947	11622	613	344032
1996–1997	2888	27474	127995	75238	4257	1097	74710	0	2946	83902	56444	537	10356	96	467939
1997–1998	1786	39328	75138	34862	3019	336	42345	0	1958	54083	49790	170	11878	85	314778
1998–1999	5393	27642	116859	46840	6055	1228	50120	43	2453	37878	38437	575	18297	182	352002
1999–2000	5646	20093	118175	67181	6124	531	69531	0	2543	21086	30147	710	23205	—	364973
2000–2001	7731	20557	187868	71461	9272	987	90184	—	2303	16394	29298	708	33517	1318	471598
2001–2002	4290	18326	275534	70404	15355	1833	78140	—	1477	38945	30431	1039	12208	—	547983
2002–2003	7428	16288	588238	177649	24217	1643	124008	—	555	10071	22486	598	7344	14	980538
2003–2004	8480	25112	411826	171428	18959	3432	83827	0	5384	16920	59889	656	23050	0	828964
2004–2005	5901	37056	433104	144177	13009	2326	88152	0	2847	23575	41889	1412	19785	247	813480
2005–2006	1802	39742	1049147	128773	14562	1998	45632	—	2213	3271	32419	959	6374	—	1326894
2007–2008	4970	13037	946596	166006	42838	307	24200	—	1736	5067	43288	1604	4375	45	1254069

*Economic value was determined by multiplying average pelt price by total harvest for a given species.

Species with missing values contributed to Utah's annual furbearer harvest but were not included in the economic value estimate due to missing average pelt price or harvest data. No data was available for 2006-2007. From 2001 to 2005, average striped skunk pelt price was used to calculate all skunk (spotted and striped) economic value.

Economic value* (in dollars) of furbearer species in Utah’s annual furbearer harvest, Utah 1983–2011 (cont.).

Trap year	Economic value (\$)														Total economic value (\$)
	Badger	Beaver	Bobcat	Coyote	Gray fox	Kit fox	Red fox	Marten	Mink	Muskrat	Raccoon	Ringtail	Skunk	Weasel	
2008-2009	4996	15319	492186	75399	29816	791	15676	—	1442	2988	14713	631	7256	—	661214
2009-2010	6458	22160	261073	98766	23047	483	43366	—	3160	27148	35589	1635	22895	458	546238
2010-2011	5338	13421	369686	203226	19019	571	64790	972	7170	41555	48575	1173	18607	267	794368
Average	4180	28715	308770	104017	17719	2509	49883	412	4189	50231	27097	824	10631	171	609221

*Economic value was determined by multiplying average pelt price by total harvest for a given species.

Species with missing values contributed to Utah’s annual furbearer harvest but were not included in the economic value estimate due to missing average pelt price or harvest data.

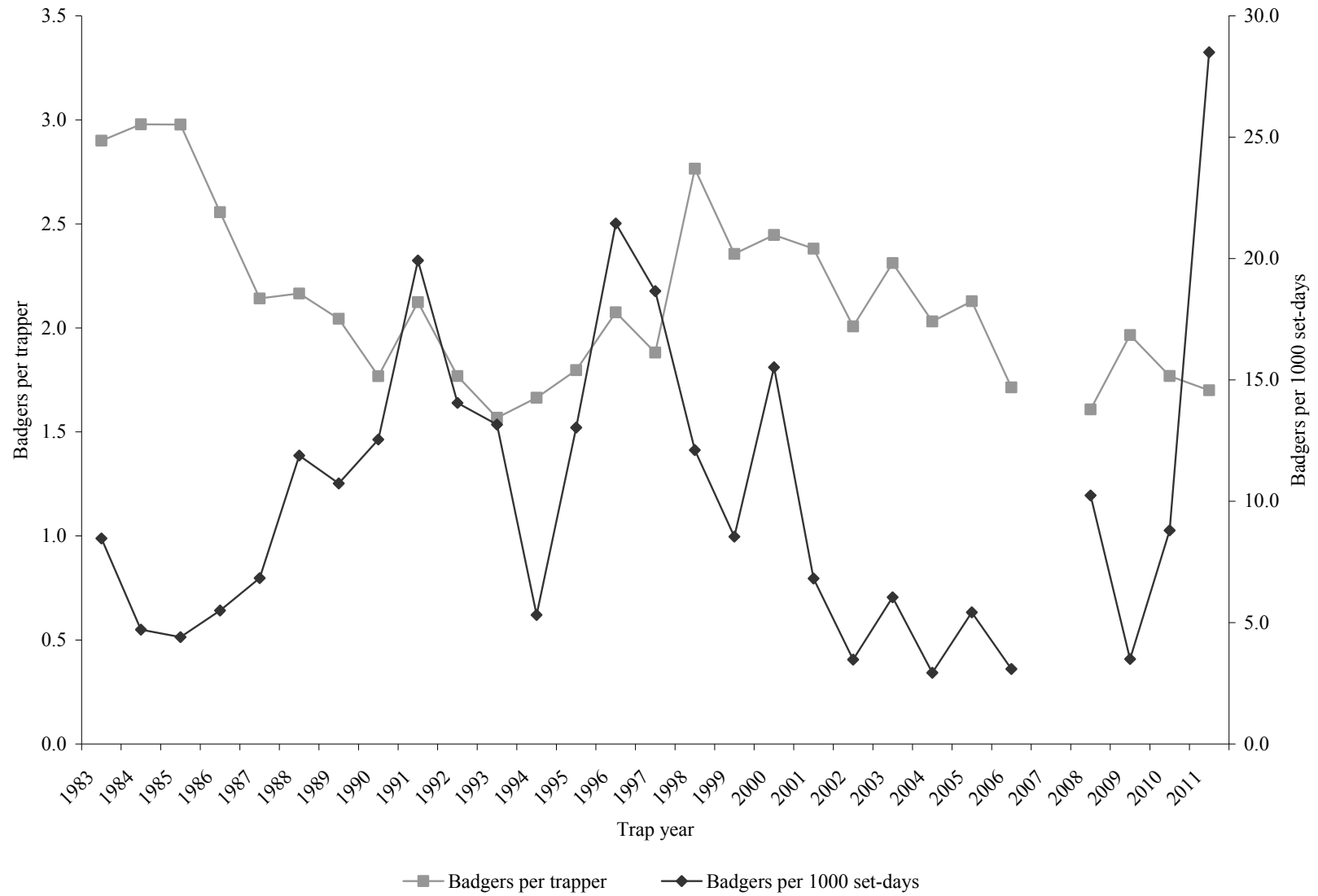
HARVEST BY SPECIES

BADGER

Statewide badger harvest statistics, Utah 1983–2011.

Trap year	Trappers afield	Trap harvest	Set-days	Set-days / badger	Badgers / 1000 set-days	Badgers / trapper	Pelt price (\$)
1982–1983	250	725	85622	118	8.5	2.9	8.20
1983–1984	188	560	118858	212	4.7	3.0	8.56
1984–1985	225	670	152179	227	4.4	3.0	10.14
1985–1986	194	496	90234	182	5.5	2.6	3.96
1986–1987	198	424	62035	146	6.8	2.1	7.64
1987–1988	212	459	38624	84	11.9	2.2	6.04
1988–1989	204	417	38836	93	10.7	2.0	4.66
1989–1990	207	366	29175	80	12.5	1.8	4.78
1990–1991	81	172	8636	50	19.9	2.1	7.27
1991–1992	134	237	16863	71	14.1	1.8	8.50
1992–1993	148	232	17631	76	13.2	1.6	9.95
1993–1994	143	238	44779	188	5.3	1.7	7.18
1994–1995	182	327	25082	77	13.0	1.8	13.93
1995–1996	133	276	12869	47	21.4	2.1	10.52
1996–1997	118	222	11897	54	18.7	1.9	13.01
1997–1998	98	271	22378	83	12.1	2.7	6.59
1998–1999	135	318	37220	117	8.5	2.4	16.96
1999–2000	177	433	27896	64	15.5	2.4	13.04
2000–2001	189	450	65997	147	6.8	2.4	17.18
2001–2002	137	275	79151	288	3.5	2.0	15.60
2002–2003	234	541	89476	165	6.0	2.3	13.73
2003–2004	223	453	154343	341	2.9	2.0	18.72
2004–2005	203	432	79629	184	5.4	2.1	13.66
2005–2006	70	120	38838	324	3.1	1.7	15.02
2006–2007	187	—	—	—	—	—	18.07
2007–2008	171	275	26850	98	10.2	1.6	14.14
2008–2009	146	287	80871	282	3.5	2.0	17.41
2009–2010	78	138	15607	113	8.8	1.8	19.34
2010–2011	115	194	6797	35	28.5	1.7	17.27
Average	165	357	52799	148	6.8	2.2	11.76

Statewide badger harvest trends, Utah 1983–2011.



Badger harvest statistics by county and management unit, Utah 2011.

County	n	Trappers afield	Trap harvest	Traps set	Trapping days	Set-days	Set-days / badger	Badgers / 1000 set-days	Badgers / trapper
Beaver	0	—	—	—	—	—	—	—	—
Box Elder	2	7	3	7	7	7	2	428.6	0.4
Iron	1	3	3	39	33	393	131	7.6	1.0
Juab	0	—	—	—	—	—	—	—	—
Millard	2	7	33	49	151	1097	33	30.1	4.7
Tooele	8	26	29	124	226	2671	92	10.9	1.1
Great Basin totals	13	43	68	219	416	4168	61	16.3	1.6
Cache	1	3	0	10	16	49	—	0.0	0.0
Davis	0	—	—	—	—	—	—	—	—
Morgan	0	—	—	—	—	—	—	—	—
Piute	0	—	—	—	—	—	—	—	—
Rich	1	3	7	3	7	7	1	1000.0	2.3
Salt Lake	0	—	—	—	—	—	—	—	—
Sanpete	1	3	10	10	16	49	5	204.1	3.3
Sevier	2	7	7	7	101	7	1	1000.0	1.0
Summit	1	3	10	3	3	3	0	3333.3	3.3
Utah	5	16	43	33	164	573	13	75.0	2.7
Wasatch	2	7	0	20	52	249	—	0.0	0.0
Weber	0	—	—	—	—	—	—	—	—
Rocky Mountain totals	13	43	77	85	360	936	12	82.3	1.8
Daggett	0	—	—	—	—	—	—	—	—
Duchesne	2	7	13	20	52	249	19	52.2	1.9
Uintah	4	13	29	39	203	989	34	29.3	2.2
Uintah Basin totals	6	20	42	59	255	1238	29	33.9	2.1
Carbon	0	—	—	—	—	—	—	—	—
Emery	1	3	0	33	33	327	—	0.0	0.0
Garfield	0	—	—	—	—	—	—	—	—
Grand	0	—	—	—	—	—	—	—	—
Kane	0	—	—	—	—	—	—	—	—
San Juan	3	10	7	10	128	128	18	54.7	0.7
Washington	0	—	—	—	—	—	—	—	—
Wayne	0	—	—	—	—	—	—	—	—
Colorado Plateau totals	4	13	7	43	160	455	65	15.4	0.5
Unknown	0	—	—	—	—	—	—	—	—
Statewide totals*	35	115	194	406	1192	6797	35	28.5	1.7

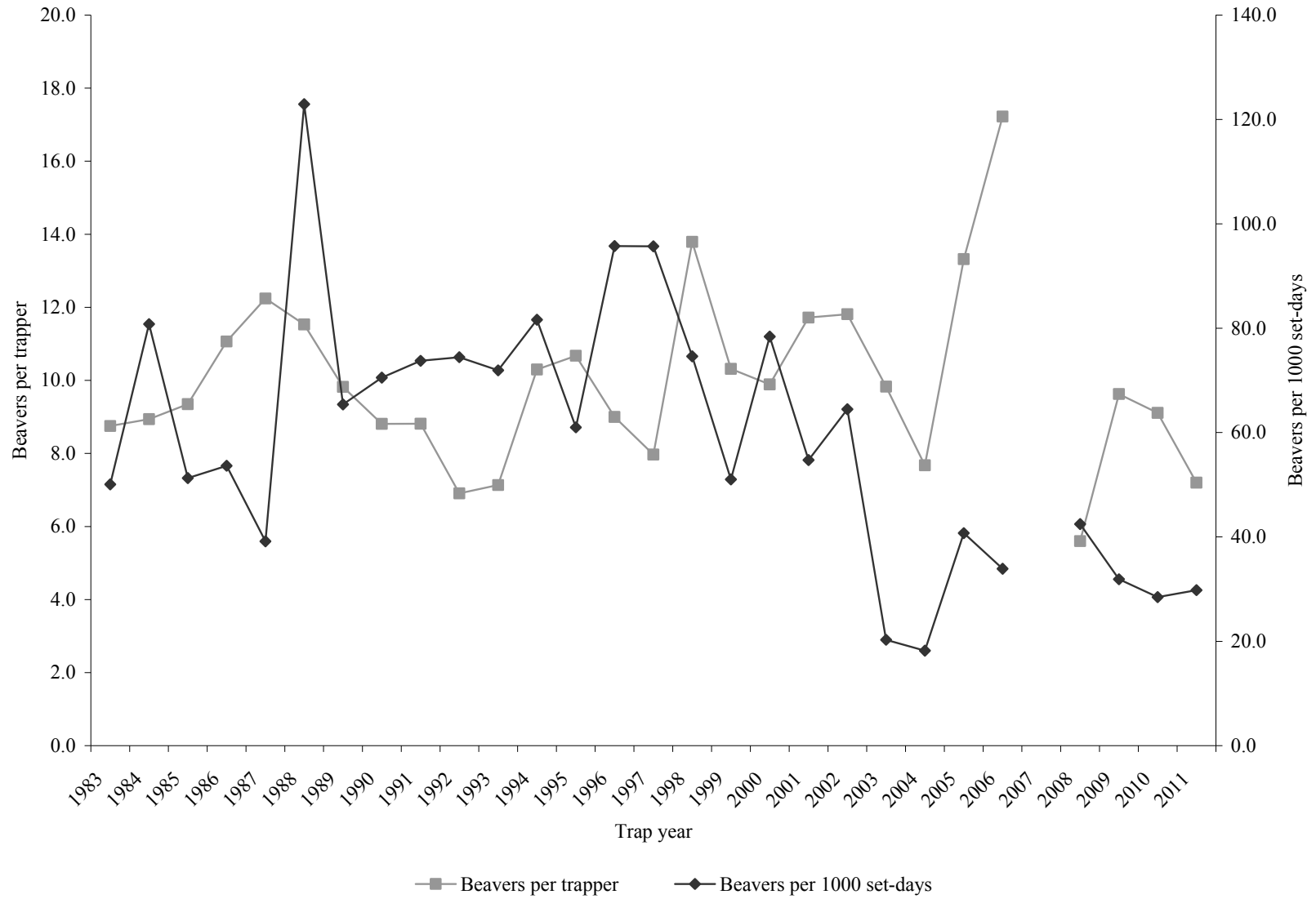
*Statewide totals for sample size and trappers afield are not totals of the columns because trappers trapped multiple counties.

BEAVER

Statewide beaver harvest statistics, Utah 1983–2011.

Trap year	Trappers afield	Trap harvest	Set-days	Set-days / beaver	Beavers / 1000 set-days	Beavers / trapper	Pelt price (\$)
1982–1983	181	1584	31632	20	50.1	8.8	12.89
1983–1984	200	1788	22131	12	80.8	8.9	14.10
1984–1985	285	2664	51960	20	51.3	9.3	16.44
1985–1986	293	3242	60428	19	53.7	11.1	14.64
1986–1987	338	4138	105661	26	39.2	12.2	22.64
1987–1988	409	4716	38367	8	122.9	11.5	14.67
1988–1989	277	2721	41616	15	65.4	9.8	10.02
1989–1990	390	3436	48716	14	70.5	8.8	11.93
1990–1991	176	1551	21029	14	73.8	8.8	6.49
1991–1992	216	1492	20040	13	74.5	6.9	8.94
1992–1993	134	956	13291	14	71.9	7.1	7.74
1993–1994	171	1761	21578	12	81.6	10.3	9.59
1994–1995	239	2551	41818	16	61.0	10.7	12.65
1995–1996	170	1530	15982	10	95.7	9.0	13.40
1996–1997	163	1299	13576	10	95.7	8.0	21.15
1997–1998	210	2896	38816	13	74.6	13.8	13.58
1998–1999	286	2950	57818	20	51.0	10.3	9.37
1999–2000	185	1830	23342	13	78.4	9.9	10.98
2000–2001	170	1992	36406	18	54.7	11.7	10.32
2001–2002	143	1689	26199	16	64.5	11.8	10.85
2002–2003	175	1720	84755	49	20.3	9.8	9.47
2003–2004	232	1781	97791	55	18.2	7.7	14.10
2004–2005	200	2664	65401	25	40.7	13.3	13.91
2005–2006	130	2239	66026	29	33.9	17.2	17.75
2006–2007	122	—	—	—	—	—	16.31
2007–2008	133	745	17545	24	42.5	5.6	17.50
2008–2009	121	1165	36536	31	31.9	9.6	13.15
2009–2010	209	1904	66879	35	28.5	9.1	11.60
2010–2011	144	1039	34854	34	29.8	7.2	12.76
Average	210	2144	42864	20	50.0	10.2	13.07

Statewide beaver harvest trends, Utah 1983–2011.



Beaver harvest statistics by county and management unit, Utah 2011.

County	n	Trappers afield	Trap harvest	Traps set	Trapping days	Set-days	Set-days / beaver	Beavers / 1000 set-days	Beavers / trapper
Beaver	0	—	—	—	—	—	—	—	—
Box Elder	1	3	7	13	65	262	37	26.7	2.3
Iron	0	—	—	—	—	—	—	—	—
Juab	2	7	7	52	49	478	68	14.6	1.0
Millard	0	—	—	—	—	—	—	—	—
Tooele	0	—	—	—	—	—	—	—	—
Great Basin totals	3	10	14	65	115	740	53	18.9	1.4
Cache	7	23	167	210	629	7661	46	21.8	7.3
Davis	1	3	3	7	23	46	15	65.2	1.0
Morgan	5	16	187	94	285	1915	10	97.7	11.7
Piute	0	—	—	—	—	—	—	—	—
Rich	1	3	43	20	147	884	21	48.6	14.3
Salt Lake	0	—	—	—	—	—	—	—	—
Sanpete	2	7	56	59	121	1015	18	55.2	8.0
Sevier	1	3	0	98	147	4420	—	0.0	0.0
Summit	3	10	72	36	216	766	11	94.0	7.2
Utah	7	23	105	144	177	1480	14	70.9	4.6
Wasatch	2	7	29	43	36	131	5	221.4	4.1
Weber	7	23	134	79	236	593	4	226.0	5.8
Rocky Mountain totals	36	118	796	788	2017	18910	24	42.1	6.7
Daggett	0	—	—	—	—	—	—	—	—
Duchesne	1	3	13	3	13	13	1	1000.0	4.3
Uintah	3	10	105	118	301	5133	49	20.5	10.5
Uintah Basin totals	4	13	118	121	314	5147	44	22.9	9.1
Carbon	1	3	13	33	49	491	38	26.5	4.3
Emery	4	13	72	105	1067	9298	129	7.7	5.5
Garfield	0	—	—	—	—	—	—	—	—
Grand	0	—	—	—	—	—	—	—	—
Kane	0	—	—	—	—	—	—	—	—
San Juan	0	—	—	—	—	—	—	—	—
Washington	2	7	26	23	69	268	10	97.0	3.7
Wayne	0	—	—	—	—	—	—	—	—
Colorado Plateau totals	7	23	111	160	1185	10057	91	11.0	4.8
Unknown	0	—	—	—	—	—	—	—	—
Statewide totals*	44	144	1039	1135	3631	34854	34	29.8	7.2

*Statewide totals for sample size and trappers afield are not totals of the columns because trappers trapped multiple counties.

BOBCAT

Statewide bobcat trapping harvest statistics, Utah 1983–2011.

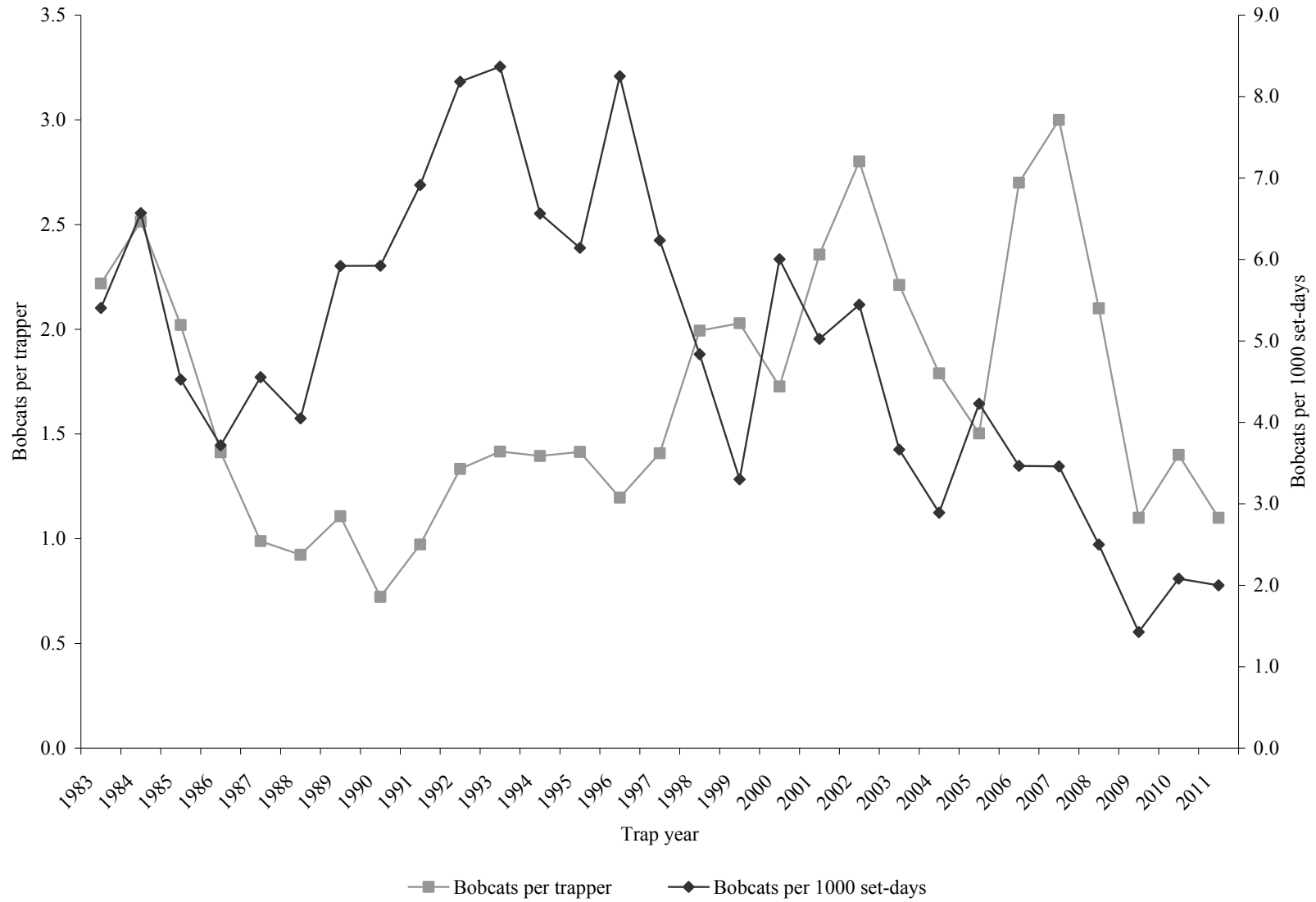
Trap year	Trappers afield	Trap harvest	Set-days	Set-days / bobcat	Bobcats / 1000 set-days	Bobcats / trapper	Pelt price (\$)
1982–1983	1145	2540	469979	185	5.4	2.2	171.00
1983–1984	1050	2640	401841	152	6.6	2.5	189.00
1984–1985	1253	2532	559480	221	4.5	2.0	202.00
1985–1986	1083	1530	411493	269	3.7	1.4	197.00
1986–1987	1036	1024	224778	220	4.6	1.0	309.00
1987–1988	1108	1023	252680	247	4.0	0.9	245.00
1988–1989	941	1042	175990	169	5.9	1.1	221.00
1989–1990	1167	843	142360	169	5.9	0.7	102.00
1990–1991	542	527	76218	145	6.9	1.0	87.00
1991–1992	726	968	118293	122	8.2	1.3	104.00
1992–1993	827	1171	139949	120	8.4	1.4	90.00
1993–1994	900	1256	191367	152	6.6	1.4	118.60
1994–1995	914	1293	210522	163	6.1	1.4	70.02
1995–1996	749	896	108594	121	8.3	1.2	79.51
1996–1997	615	866	138899	160	6.2	1.4	147.80
1997–1998	619	1234	255147	207	4.8	2.0	60.89
1998–1999	1031	2092	633774	303	3.3	2.0	55.86
1999–2000	828	1430	238152	167	6.0	1.7	82.64
2000–2001	852	2008	399609	199	5.0	2.4	93.56
2001–2002	666	1866	342678	184	5.4	2.8	147.66
2002–2003	984	2176	593692	273	3.7	2.2	270.33
2003–2004	1133	2027	701383	346	2.9	1.8	203.17
2004–2005	1300	1954	462019	236	4.2	1.5	221.65
2005–2006	979	2625	757380	289	3.5	2.7	358.56
2006–2007	1017	3037	877870	289	3.5	3.0	197.53
2007–2008	985	2091	836519	400	2.5	2.1	388.43
2008–2009	1630	1796	1258813	701	1.4	1.1	238.69
2009–2010	717	1017	488709	481	2.1	1.4	223.71
2010–2011	771	846	416474	492	2.0	1.1	368.95
Average	951	1598	409816	256	3.9	1.7	180.85

*Prior to the 2005–2006 season, harvest by hunting and trapping was not collected separately. As such, trapping harvest estimates include all harvest by hunters and trappers.

Statewide bobcat non-trapping harvest statistics, Utah 2006–2011.

Year	Hunters afield	Non-trap harvest	Hunter-days afield	Hunter-days / bobcat	Bobcats / hunter	Pelt price (\$)
2005–2006	612	301	8194	27	0.5	358.56
2006-2007	440	340	10408	31	0.8	197.53
2007-2008	557	346	10089	29	0.6	388.43
2008-2009	438	266	7360	28	0.6	238.69
2009-2010	370	150	5253	35	0.4	223.71
2010-2011	355	156	5888	38	0.4	368.95
Average	462	260	7865	30	0.6	295.98

Statewide bobcat trapping harvest trends, Utah 1983–2011.



Bobcat trapping harvest statistics by county and management unit, Utah 2011.

County	n	Trappers afield	Trap harvest**	Traps set	Trapping days	Set-days	Set-days / bobcat	Bobcats / 1000 set-days	Bobcats / trapper
Beaver	11	48	37	2221	446	23770	642	1.6	0.8
Box Elder	12	52	55	1818	589	22842	415	2.4	1.1
Iron	17	74	68	2485	1030	43830	645	1.6	0.9
Juab	9	39	32	524	368	5274	165	6.1	0.8
Millard	9	39	33	1069	485	10729	325	3.1	0.8
Tooele	13	56	30	1485	636	22701	757	1.3	0.5
Great Basin totals	71	307	255	9603	3555	129145	506	2.0	0.8
Cache	3	13	6	429	273	16981	2830	0.4	0.5
Davis	1	4	3	30	35	242	81	12.4	0.8
Morgan	4	17	3	654	178	4347	1449	0.7	0.2
Piute	2	9	18	589	139	9421	523	1.9	2.0
Rich	2	9	6	489	35	1658	276	3.6	0.7
Salt Lake	2	9	8	156	52	312	39	25.6	0.9
Sanpete	7	30	9	875	273	8876	986	1.0	0.3
Sevier	10	43	53	1459	619	24857	469	2.1	1.2
Summit	3	13	5	472	78	2741	548	1.8	0.4
Utah	7	30	24	537	325	5157	215	4.7	0.8
Wasatch	0	—	7	—	—	—	—	—	—
Weber	5	22	5	654	104	2606	521	1.9	0.2
Rocky Mountain totals	46	199	147	6343	2109	77199	525	1.9	0.7
Daggett	2	9	18	121	39	515	29	35.0	2.0
Duchesne	11	48	29	1095	433	9798	338	3.0	0.6
Uintah	12	52	38	1411	658	24779	652	1.5	0.7
Uintah Basin totals	25	108	85	2628	1130	35092	413	2.4	0.8
Carbon	11	48	20	2000	753	39028	1951	0.5	0.4
Emery	6	26	29	472	191	4234	146	6.8	1.1
Garfield	16	69	57	1965	940	36328	637	1.6	0.8
Grand	1	4	12	26	87	520	43	23.1	3.0
Kane	12	52	84	1429	727	23545	280	3.6	1.6
San Juan	5	22	42	498	316	7828	186	5.4	1.9
Washington	13	56	75	1797	966	47817	638	1.6	1.3
Wayne	9	39	30	1411	433	14492	483	2.1	0.8
Colorado Plateau totals	73	316	349	9599	4412	173792	498	2.0	1.1
Unknown	0	—	—	—	—	—	—	—	—
Statewide totals*	178	771	846	28277	11257	416474	492	2.0	1.1

*Statewide totals for sample size and trappers afield are not totals of the columns because trappers trapped multiple counties.

**Total harvest numbers are from pelt check-in, while numbers of trappers afield and effort are determined from harvest survey.

Bobcat non-trapping harvest statistics by county and management unit, Utah 2011.

County	n	Hunters afield	Non-trap harvest**	Hunter-days afield	Hunter-days / bobcat	Bobcats / hunter
Beaver	1	4	7	9	1	1.8
Box Elder	9	39	8	212	27	0.2
Iron	7	30	9	130	14	0.3
Juab	6	26	10	355	36	0.4
Millard	2	9	3	160	53	0.3
Tooele	9	39	3	658	219	0.1
Great Basin totals	34	147	40	1524	38	0.3
Cache	3	13	5	238	48	0.4
Davis	1	4	0	43	—	0.0
Morgan	2	9	7	108	15	0.8
Piute	1	4	0	130	—	0.0
Rich	0	—	7	—	—	—
Salt Lake	1	4	1	4	4	0.3
Sanpete	6	26	5	100	20	0.2
Sevier	2	9	7	134	19	0.8
Summit	4	17	12	82	7	0.7
Utah	5	22	9	351	39	0.4
Wasatch	3	13	3	299	100	0.2
Weber	2	9	1	26	26	0.1
Rocky Mountain totals	30	130	56	1515	27	0.4
Daggett	2	9	3	74	25	0.3
Duchesne	4	17	4	143	36	0.2
Uintah	9	39	15	294	20	0.4
Uintah Basin totals	15	65	22	511	23	0.3
Carbon	8	35	2	507	254	0.1
Emery	7	30	13	459	35	0.4
Garfield	5	22	7	541	77	0.3
Grand	5	22	4	147	37	0.2
Kane	3	13	3	139	46	0.2
San Juan	7	30	7	320	46	0.2
Washington	4	17	0	82	—	0.0
Wayne	2	9	1	130	130	0.1
Colorado Plateau totals	41	178	37	2325	63	0.2
Unknown	0	—	—	—	—	—
Statewide totals*	82	355	156	5888	38	0.4

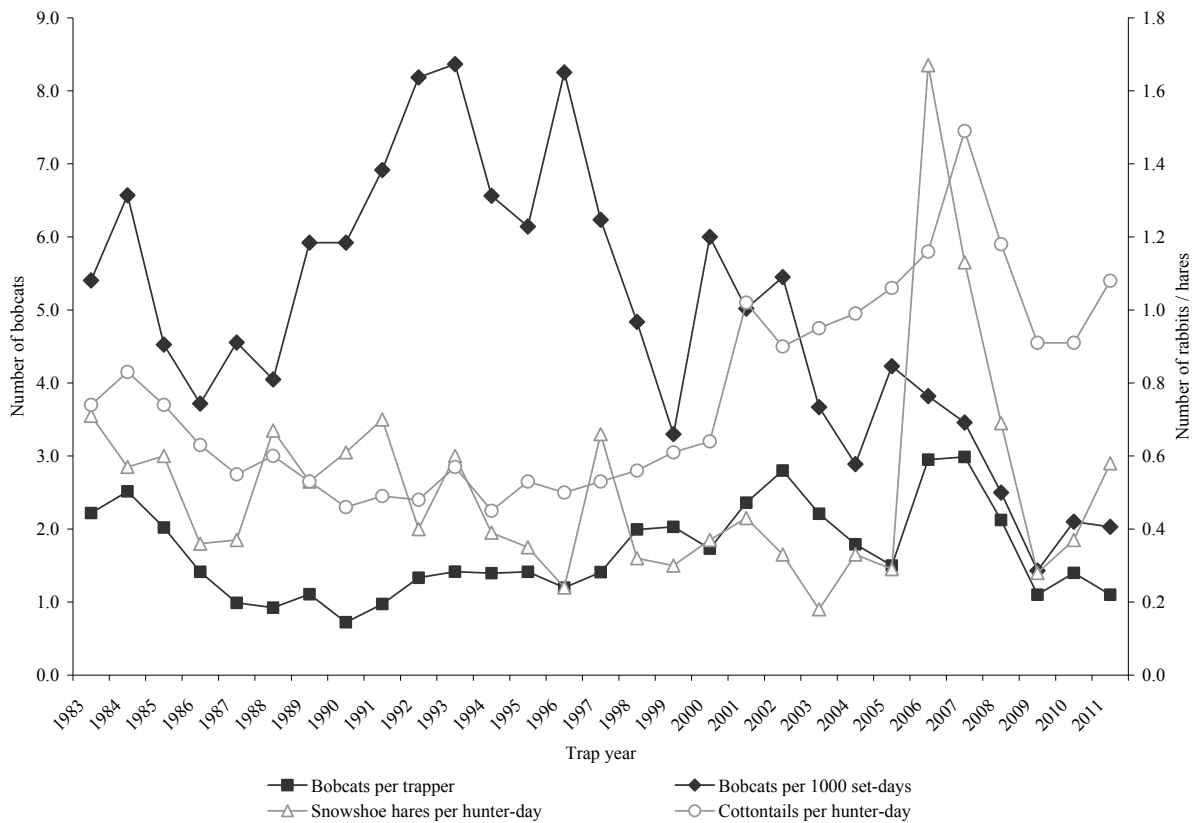
*Statewide totals for sample size and hunters afield are not totals of the columns because hunters hunted multiple counties.

**Total harvest numbers are from pelt check-in, while numbers of hunters afield and effort are determined from harvest survey.

Prey index

Lagomorph densities are generally considered to be a good indicator of bobcat recruitment and survival because high lagomorph populations provide an essential prey base for dispersing bobcats. When lagomorph populations are high or increasing, the bobcat population has also increased or at least remained stable. Thus, low populations of lagomorphs will reduce the likelihood of younger bobcats surviving to the next year. Cottontail rabbit and snowshoe hare data are taken from the Utah Upland Game Annual Report 2010 (2010-11 seasons).

Relationships in harvest statistics between bobcat and prey, Utah 1983–2011.



Population trends

Bobcat harvest age and sex ratios, Utah 1986–2011.

Trap year	Kittens / adult female	Kittens / adult	Male kittens / female kittens	Juveniles / adult	Juv. males / juv. females	Proportion juveniles in harvest	Proportion females in harvest	Males / females
1985–1986	0.48	0.21	0.95	—	—	—	—	1.20
1986–1987	0.67	0.30	0.92	—	—	—	—	1.09
1987–1988	1.18	0.53	0.97	—	—	—	—	1.11
1988–1989	1.09	0.44	1.05	—	—	—	—	1.32
1989–1990	0.76	0.32	1.00	—	—	—	—	1.39
1990–1991	0.82	0.33	0.62	—	—	—	—	1.23
1991–1992	0.86	0.69	1.25	—	—	—	—	1.47
1992–1993	0.91	1.00	1.21	—	—	—	—	1.37
1993–1994	1.58	0.61	0.98	—	—	—	—	1.32
1994–1995	0.62	0.57	1.14	0.57	1.14	0.36	0.44	1.34
1995–1996	1.36	0.54	0.72	0.54	0.97	0.35	0.44	1.30
1996–1997	1.86	0.67	1.10	0.68	1.12	0.41	0.41	1.40
1997–1998	1.15	0.44	0.94	0.44	0.94	0.30	0.42	1.38
1998–1999	2.06	0.82	1.13	—	—	—	—	1.30
1999–2000	0.82	0.30	1.01	1.02	1.36	0.50	0.39	1.55
2000–2001	0.69	0.26	1.12	0.89	1.32	0.47	0.39	1.56
2001–2002	0.40	0.16	0.96	0.61	1.19	0.38	0.41	1.44
2002–2003	0.37	0.16	0.88	0.39	0.97	0.28	0.45	1.24
2003–2004	0.63	0.29	0.85	0.46	0.95	0.31	0.47	1.10
2004–2005	0.80	0.32	0.83	1.22	1.13	0.55	0.44	1.28
2005–2006	5.85	2.54	1.37	2.54	1.37	0.72	0.43	1.36
2006–2007	4.10	1.48	1.43	1.48	1.43	0.60	0.43	1.32
2007–2008	3.00	1.31	1.06	1.38	1.06	0.56	0.43	1.31
2008–2009	0.44	0.18	0.82	0.72	0.98	0.42	0.45	1.22
2009–2010	0.67	0.30	1.04	0.60	1.16	0.38	0.47	1.13
2010–2011	0.61	0.25	1.08	0.46	1.22	0.31	0.43	1.36
Average	1.30	0.58	1.02	0.88	1.14	0.43	0.43	1.31

In annual reports prior to 2005-2006, the "juvenile" age category referred only to kittens (age 0.5) while "adults" included all bobcats age 1.5 and older. Beginning with the 2005-2006 annual report, the term "juvenile" now refers to kittens and yearlings (ages 0.5-1.5), while "adult" includes all bobcats age 2.5 and older.

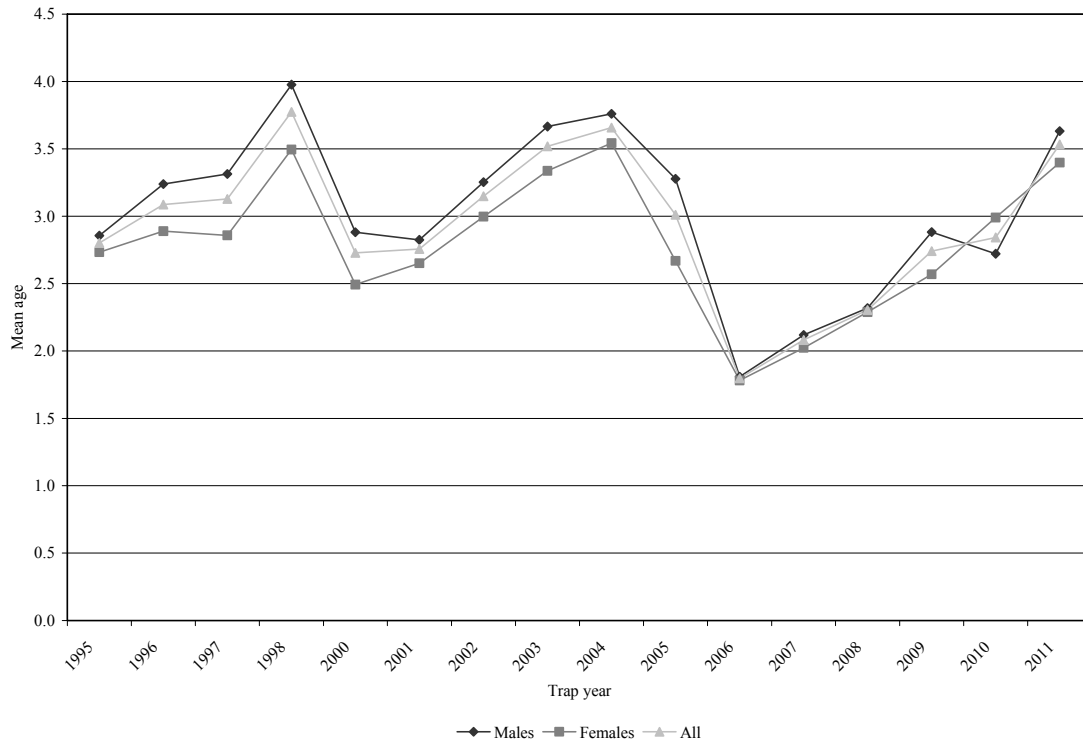
Adult and juvenile bobcat survival (from Chapman-Robson estimator), Utah 1986–2011.

Trap year	Adult survival			Juvenile* survival		
	S (%)	95% CI	Chi-square	S (%)	95% CI	Chi-square
1985–1986	63	60–65	—	42	40–45	—
1986–1987	63	60–65	—	35	32–39	—
1987–1988	65	61–68	—	35	32–38	—
1988–1989	64	60–68	—	38	35–40	—
1989–1990	67	63–71	—	41	38–44	—
1990–1991	58	53–62	—	36	31–41	—
1991–1992	58	55–60	—	32	29–36	—
1992–1993	59	56–63	—	29	25–33	—
1993–1994	54	52–57	—	40	36–43	—
1994–1995	57	54–59	—	34	30–37	—
1995–1996	64	61–66	—	30	25–34	—
1996–1997	68	65–70	—	34	30–38	—
1997–1998	71	69–74	17.3, 10df	34	28–40	62.6, 2df
1998–1999	71	70–73	29.5, 12df	29	26–33	110.2, 2df
1999–2000	66	64–68	71.4, 12df	35	33–38	445.6, 2df
2000–2001	64	62–66	144.6, 12df	36	33–39	389.3, 2df
2001–2002	65	63–67	302.4, 12df	39	36–42	596.6, 2df
2002–2003	67	65–68	1988.1, 12df	39	35–42	459.5, 2df
2003–2004	71	70–72	1328.7, 12df	22	19–25	31.6, 2df
2004–2005	74	73–76	105.2, 12df	36	33–38	985.6, 2df
2005–2006	68	65–70	33.6, 12df	16	14–18	3223.7, 2df
2006–2007	53	48–58	126.3, 12df	35	30–39	195.3, 2df
2007–2008	58	54–62	77.9, 12df	39	35–43	320.1, 2df
2008–2009	57	54–61	41.5, 12df	43	39–48	305.5, 2df
2009–2010	59	56–62	25.3, 12df	34	29–39	168.5, 2df
2010–2011	69	66–71	117.8, 12df	31	26–37	171.0, 2df
Average	64	—	—	34	—	—

*Juveniles includes kittens and yearlings (ages 0.5–1.5).

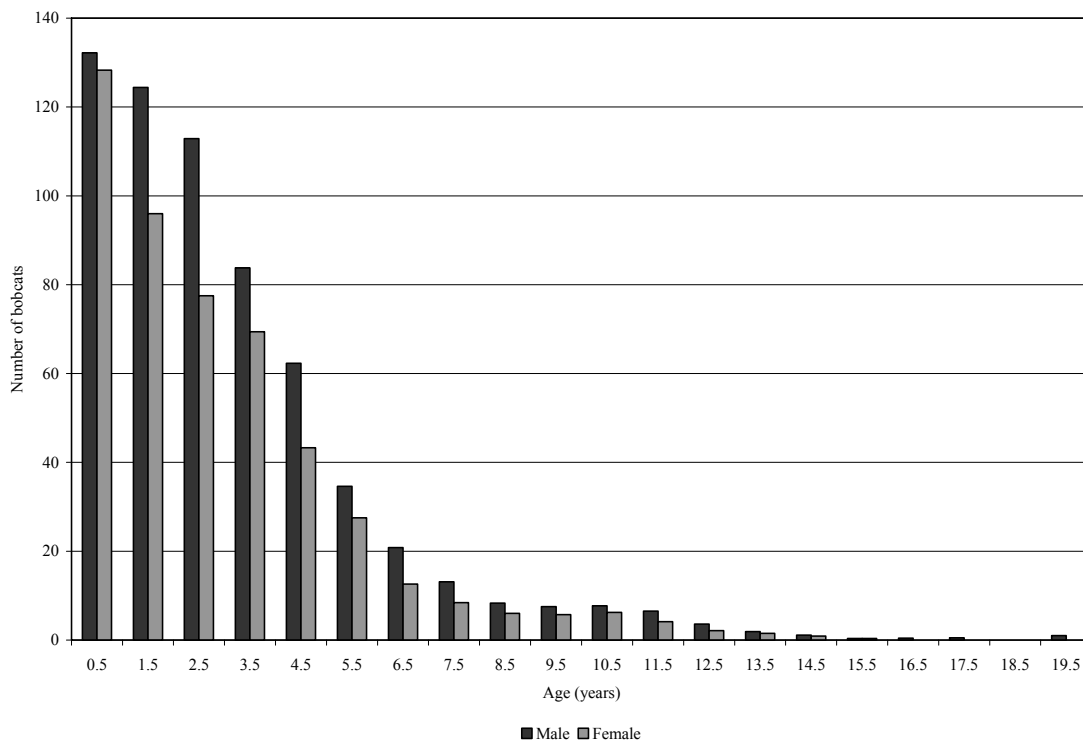
Age structure

Average age of harvested bobcats, Utah 1995–2011.

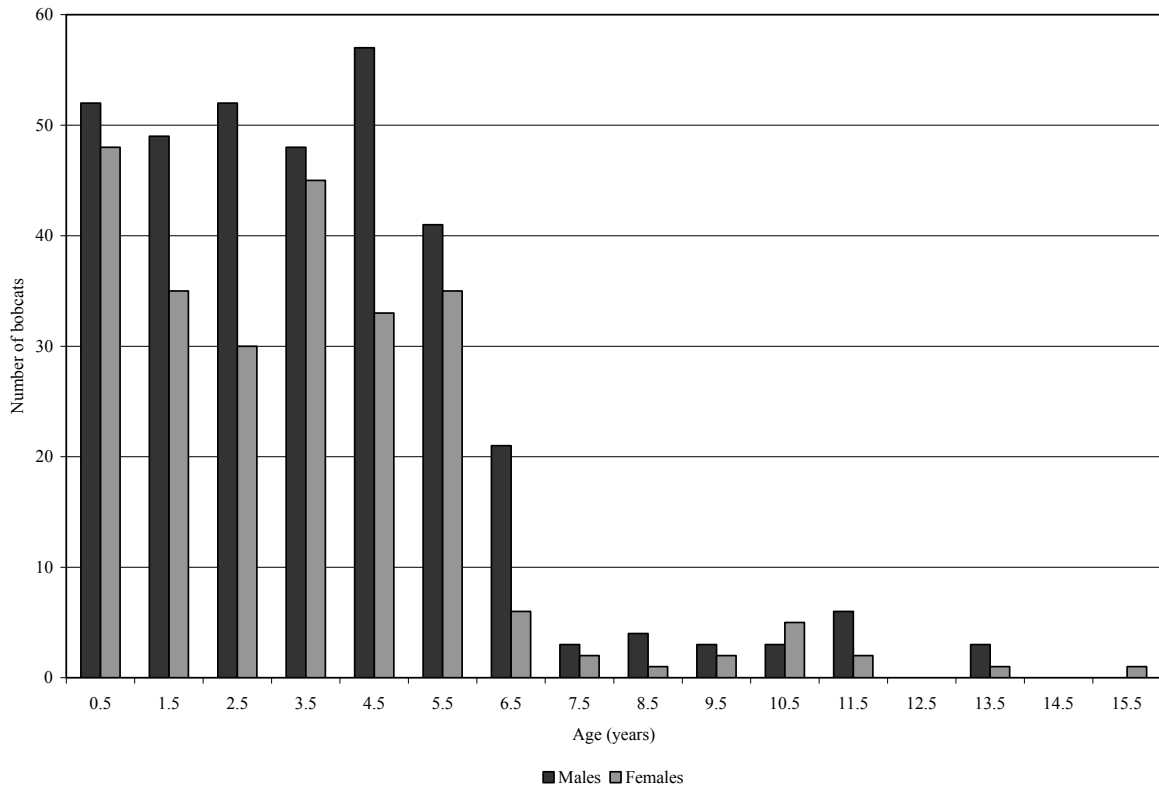


*Excludes age structure data from the 1998–1999 trap season.

Average number of bobcats harvested by age category, Utah 2002–2011.



Age structure of harvested bobcats, Utah 2011.



COYOTE

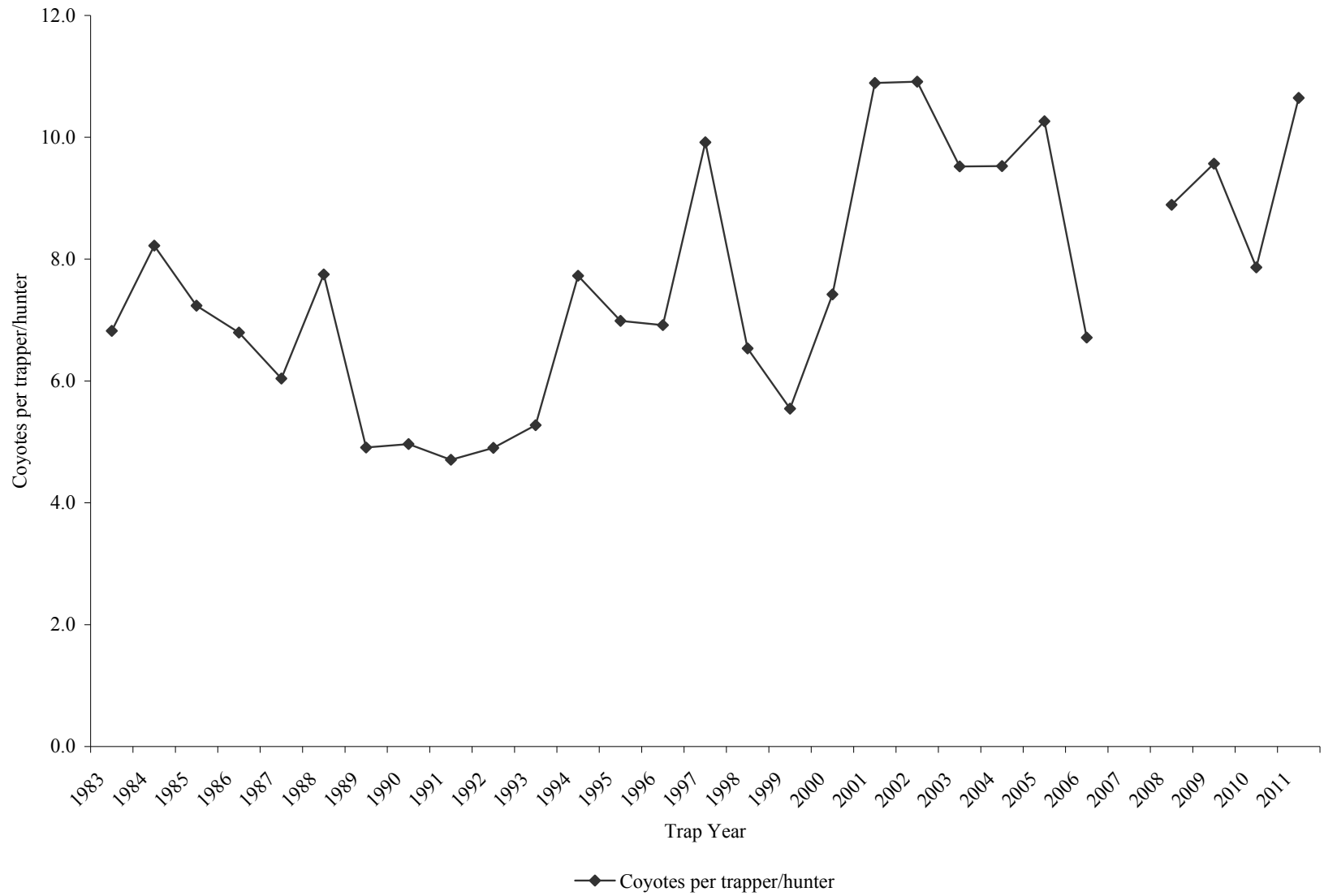
Statewide coyote harvest statistics, Utah 1983–2011.

Trap year	Hunters / trappers afield*	Harvest				Coyotes per hunter / trapper	Pelt price (\$)
		Wildlife Services	Trap	Non-trap	Total		
1982–1983	841	4130	5738	—	9868	6.8	35.42
1983–1984	715	5063	5878	—	10941	8.2	25.92
1984–1985	828	5427	5991	—	11418	7.2	32.35
1985–1986	714	5045	4851	—	9896	6.8	19.65
1986–1987	819	4116	4947	—	9063	6.0	33.64
1987–1988	893	4338	6919	—	11257	7.7	15.55
1988–1989	652	4853	3200	—	8053	4.9	8.47
1989–1990	671	5168	3331	—	8499	5.0	8.68
1990–1991	389	4444	1831	—	6275	4.7	11.41
1991–1992	664	4347	3255	—	7602	4.9	20.00
1992–1993	695	4932	3666	—	8598	5.3	15.75
1993–1994	679	5827	5247	—	11074	7.7	24.58
1994–1995	754	3893	5267	—	9160	7.0	12.51
1995–1996	632	4165	4372	—	8537	6.9	15.49
1996–1997	405	4484	4017	—	8501	9.9	18.73
1997–1998	494	4169	3228	—	7397	6.5	10.80
1998–1999	782	3464	4337	—	7801	5.5	10.80
1999–2000	473	4534	3510	—	8044	7.4	19.14
2000–2001	456	4275	4966	—	9241	10.9	14.39
2001–2002	399	3874	4354	—	8228	10.9	16.17
2002–2003	572	3394	5446	—	8840	9.5	32.62
2003–2004	699	3897	6660	—	10557	9.5	25.74
2004–2005	699	4125	7173	—	11298	10.3	20.10
2005–2006	630	4820	1190	3039	9049	6.7	30.45
2006–2007	830	5041	—	—	—	—	26.37
2007–2008	859	5618	4055	3582	13255	8.9	21.74
2008–2009	726	3909	3963	2982	10854	9.6	10.86
2009–2010	781	3808	3188	2955	9951	7.9	14.80
2010–2011	736	4081	4356	3480	11917	10.6	25.00
Average	672	4457	4462	3208	9471	6.1	19.90

Prior to the 2005–2006 season, harvest by hunting and trapping was not collected separately. As such, trapping harvest estimates included all harvest by both hunting and trapping.

*Hunters/trappers afield and coyotes per hunter/trapper do not include Wildlife Services data.

Statewide coyote harvest trends, Utah 1983–2011.



Coyote trapping harvest statistics by county and management unit, Utah 2011.

County	n	Trappers afield	Trap harvest	Traps set	Trapping days	Set-days	Set-days / coyote	Coyotes / 1000 set-days	Coyotes / trapper
Beaver	7	23	138	161	1630	13863	100	10.0	6.0
Box Elder	9	30	483	953	1564	51500	107	9.4	16.1
Iron	11	36	329	555	1755	30229	92	10.9	9.1
Juab	4	13	105	187	260	5333	51	19.7	8.1
Millard	5	16	276	404	729	14345	52	19.2	17.3
Tooele	9	30	171	342	752	10803	63	15.8	5.7
Great Basin totals	45	148	1502	2602	6690	126074	84	11.9	10.1
Cache	8	26	292	631	1045	40687	139	7.2	11.2
Davis	0	—	—	—	—	—	—	—	—
Morgan	2	7	16	82	128	2395	150	6.7	2.3
Piute	4	13	184	319	772	35604	194	5.2	14.2
Rich	3	10	621	545	759	54865	88	11.3	62.1
Salt Lake	1	3	3	26	66	526	175	5.7	1.0
Sanpete	4	13	138	263	854	22211	161	6.2	10.6
Sevier	6	20	243	319	821	14030	58	17.3	12.2
Summit	0	—	—	—	—	—	—	—	—
Utah	8	26	148	210	815	7436	50	19.9	5.7
Wasatch	4	13	85	128	394	5027	59	16.9	6.5
Weber	1	3	3	7	33	66	22	45.5	1.0
Rocky Mountain totals	41	135	1733	2530	5688	182847	106	9.5	12.8
Daggett	1	3	0	7	69	138	—	0.0	0.0
Duchesne	8	26	145	227	447	7449	51	19.5	5.6
Uintah	10	33	214	536	959	23467	110	9.1	6.5
Uintah Basin totals	19	62	359	769	1475	31053	86	11.6	5.8
Carbon	3	10	36	82	227	1203	33	29.9	3.6
Emery	2	7	0	49	148	1232	—	0.0	0.0
Garfield	8	26	69	312	578	14743	214	4.7	2.7
Grand	0	—	—	—	—	—	—	—	—
Kane	11	36	164	437	1557	34930	213	4.7	4.6
San Juan	4	13	79	158	444	7278	92	10.9	6.1
Washington	8	26	292	207	555	7087	24	41.2	11.2
Wayne	4	13	99	105	417	4485	45	22.1	7.6
Colorado Plateau totals	40	131	739	1350	3926	70958	96	10.4	5.6
Unknown	2	7	23	20	85	302	13	76.2	3.3
Statewide totals*	117	384	4356	7271	17865	411234	94	10.6	11.3

*Statewide totals for sample size and trappers afield are not totals of the columns because trappers trapped multiple counties.

Coyote non-trapping harvest statistics by county and management unit, Utah 2011.

County	n	Hunters afield	Non-trap harvest	Hunter-days afield	Hunter-days / coyote	Coyotes / hunter
Beaver	8	26	115	1166	10	4.4
Box Elder	22	72	414	545	1	5.8
Iron	12	39	319	1242	4	8.2
Juab	16	53	151	920	6	2.8
Millard	10	33	125	1080	9	3.8
Tooele	26	85	329	1447	4	3.9
Great Basin totals	94	309	1452	6401	4	4.7
Cache	4	13	59	177	3	4.5
Davis	1	3	23	82	4	7.7
Morgan	4	13	36	56	2	2.8
Piute	2	7	79	342	4	11.3
Rich	2	7	95	112	1	13.6
Salt Lake	0	—	—	—	—	—
Sanpete	5	16	141	168	1	8.8
Sevier	5	16	82	844	10	5.1
Summit	3	10	43	513	12	4.3
Utah	13	43	138	506	4	3.2
Wasatch	7	23	105	509	5	4.6
Weber	4	13	26	154	6	2.0
Rocky Mountain totals	50	164	828	3463	4	5.0
Daggett	3	10	46	69	2	4.6
Duchesne	12	39	49	243	5	1.3
Uintah	15	49	348	1051	3	7.1
Uintah Basin totals	30	99	444	1364	3	4.5
Carbon	9	30	33	641	19	1.1
Emery	6	20	36	697	19	1.8
Garfield	9	30	69	647	9	2.3
Grand	4	13	30	128	4	2.3
Kane	8	26	128	539	4	4.9
San Juan	9	30	187	394	2	6.2
Washington	8	26	151	407	3	5.8
Wayne	4	13	92	168	2	7.1
Colorado Plateau totals	57	187	726	3621	5	3.9
Unknown	2	7	30	131	4	4.3
Statewide totals*	141	463	3480	14980	4	7.5

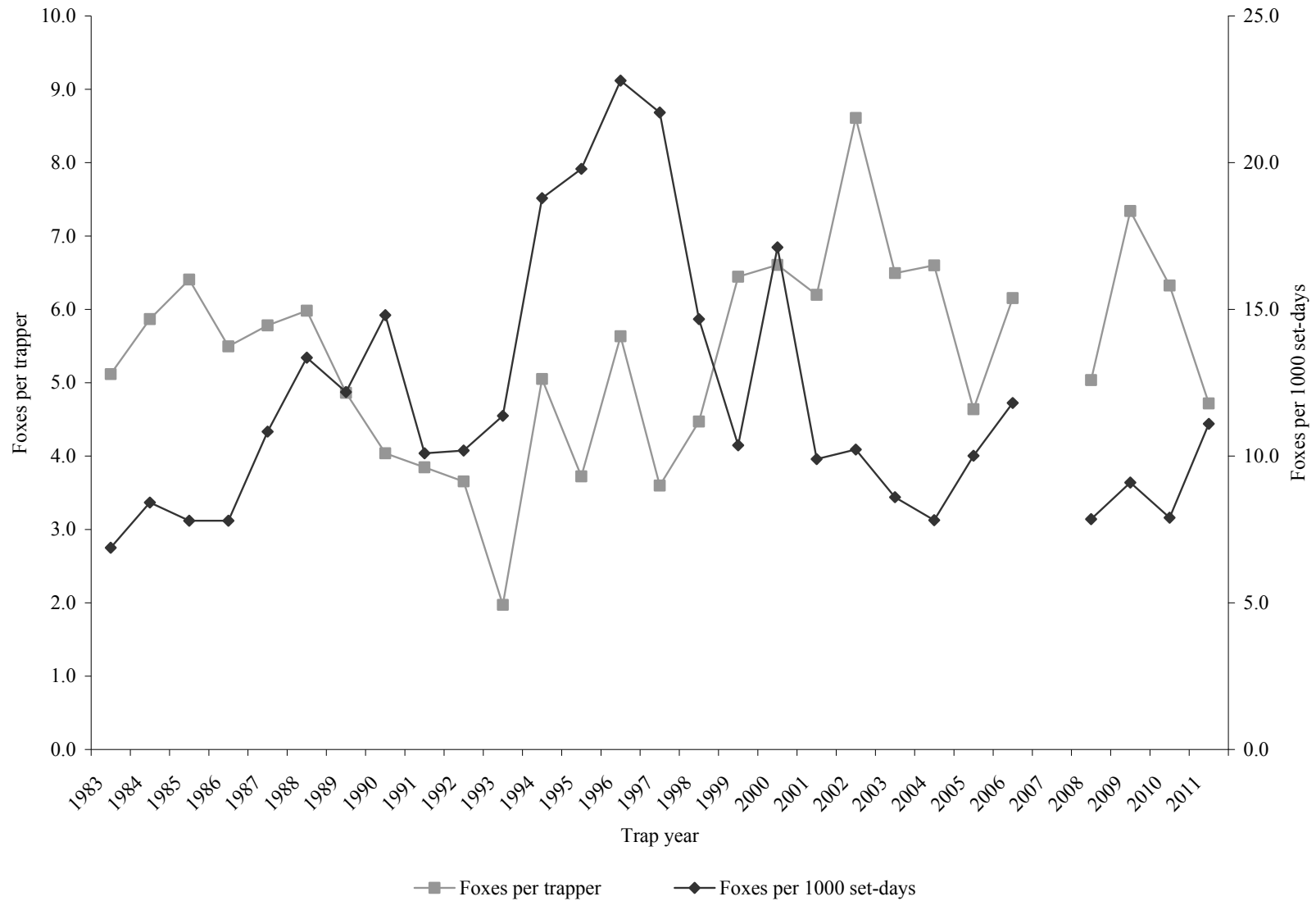
*Statewide totals for sample size and hunters afield are not totals of the columns because hunters hunted multiple counties.

GRAY FOX

Statewide gray fox harvest statistics, Utah 1983–2011.

Trap year	Trappers afield	Trap harvest	Set-days	Set-days / fox	Foxes / 1000 set-days	Foxes / trapper	Pelt price (\$)
1982–1983	263	1346	195772	145	6.9	5.1	27.75
1983–1984	233	1367	162394	119	8.4	5.9	25.13
1984–1985	305	1954	250538	128	7.8	6.4	24.64
1985–1986	256	1407	180454	128	7.8	5.5	15.03
1986–1987	252	1457	134458	92	10.8	5.8	25.29
1987–1988	273	1633	122271	75	13.4	6.0	21.91
1988–1989	226	1099	90214	82	12.2	4.9	13.50
1989–1990	233	941	63576	68	14.8	4.0	6.19
1990–1991	65	250	24768	99	10.1	3.8	8.24
1991–1992	110	402	39445	98	10.2	3.7	6.87
1992–1993	214	422	37108	88	11.4	2.0	7.08
1993–1994	136	687	36563	53	18.8	5.1	12.00
1994–1995	207	771	38957	51	19.8	3.7	9.62
1995–1996	147	828	36319	44	22.8	5.6	10.65
1996–1997	102	367	16904	46	21.7	3.6	11.60
1997–1998	87	389	26515	68	14.7	4.5	7.76
1998–1999	135	870	83913	96	10.4	6.4	6.96
1999–2000	140	925	54044	58	17.1	6.6	6.62
2000–2001	187	1159	117117	101	9.9	6.2	8.00
2001–2002	154	1326	129687	98	10.2	8.6	11.58
2002–2003	299	1942	225810	116	8.6	6.5	12.47
2003–2004	265	1749	223814	128	7.8	6.6	10.84
2004–2005	203	942	94102	100	10.0	4.6	13.81
2005–2006	98	603	51051	85	11.8	6.2	24.15
2006–2007	252	—	—	—	—	—	37.25
2007–2008	217	1093	139231	127	7.9	5.0	39.19
2008–2009	238	1747	192782	110	9.1	7.3	17.07
2009–2010	163	1031	130049	126	7.9	6.3	16.56
2010–2011	138	651	58725	90	11.1	4.7	20.97
Average	193	1049	105592	101	9.9	5.4	15.82

Statewide gray fox harvest trends, Utah 1983–2011.



Gray fox harvest statistics by county and management unit, Utah 2011.

County	n	Trappers afield	Trap harvest	Traps set	Trapping days	Set-days	Set-days / fox	Foxes / 1000 set-days	Foxes / trapper
Beaver	4	13	30	118	567	9246	308	3.2	2.3
Box Elder	0	—	—	—	—	—	—	—	—
Iron	10	33	128	308	1013	10705	84	12.0	3.9
Juab	0	—	—	—	—	—	—	—	—
Millard	1	3	0	3	98	98	—	0.0	0.0
Tooele	0	—	—	—	—	—	—	—	—
Great Basin totals	15	49	158	430	1679	20049	127	7.9	3.2
Cache	0	—	—	—	—	—	—	—	—
Davis	0	—	—	—	—	—	—	—	—
Morgan	0	—	—	—	—	—	—	—	—
Piute	0	—	—	—	—	—	—	—	—
Rich	0	—	—	—	—	—	—	—	—
Salt Lake	0	—	—	—	—	—	—	—	—
Sanpete	0	—	—	—	—	—	—	—	—
Sevier	0	—	—	—	—	—	—	—	—
Summit	0	—	—	—	—	—	—	—	—
Utah	0	—	—	—	—	—	—	—	—
Wasatch	0	—	—	—	—	—	—	—	—
Weber	0	—	—	—	—	—	—	—	—
Rocky Mountain totals	0	—	—	—	—	—	—	—	—
Daggett	0	—	—	—	—	—	—	—	—
Duchesne	1	3	7	3	3	3	0	2333.3	2.3
Uintah	3	10	102	194	292	10577	104	9.6	10.2
Uintah Basin totals	4	13	109	197	295	10581	97	10.3	8.4
Carbon	2	7	7	43	102	1184	169	5.9	1.0
Emery	1	3	3	33	16	164	55	18.3	1.0
Garfield	3	10	36	157	298	8072	224	4.5	3.6
Grand	1	3	0	66	20	394	—	0.0	0.0
Kane	8	26	124	318	879	13660	110	9.1	4.8
San Juan	3	10	13	131	105	417	32	31.2	1.3
Washington	8	26	151	128	377	3303	22	45.7	5.8
Wayne	3	10	43	46	187	899	21	47.8	4.3
Colorado Plateau totals	29	95	377	922	1984	28091	75	13.4	4.0
Unknown	1	3	7	3	3	3	0	2333.3	2.3
Statewide totals*	42	138	651	1551	3962	58725	90	11.1	4.7

*Statewide totals for sample size and trappers afield are not totals of the columns because trappers trapped multiple counties.

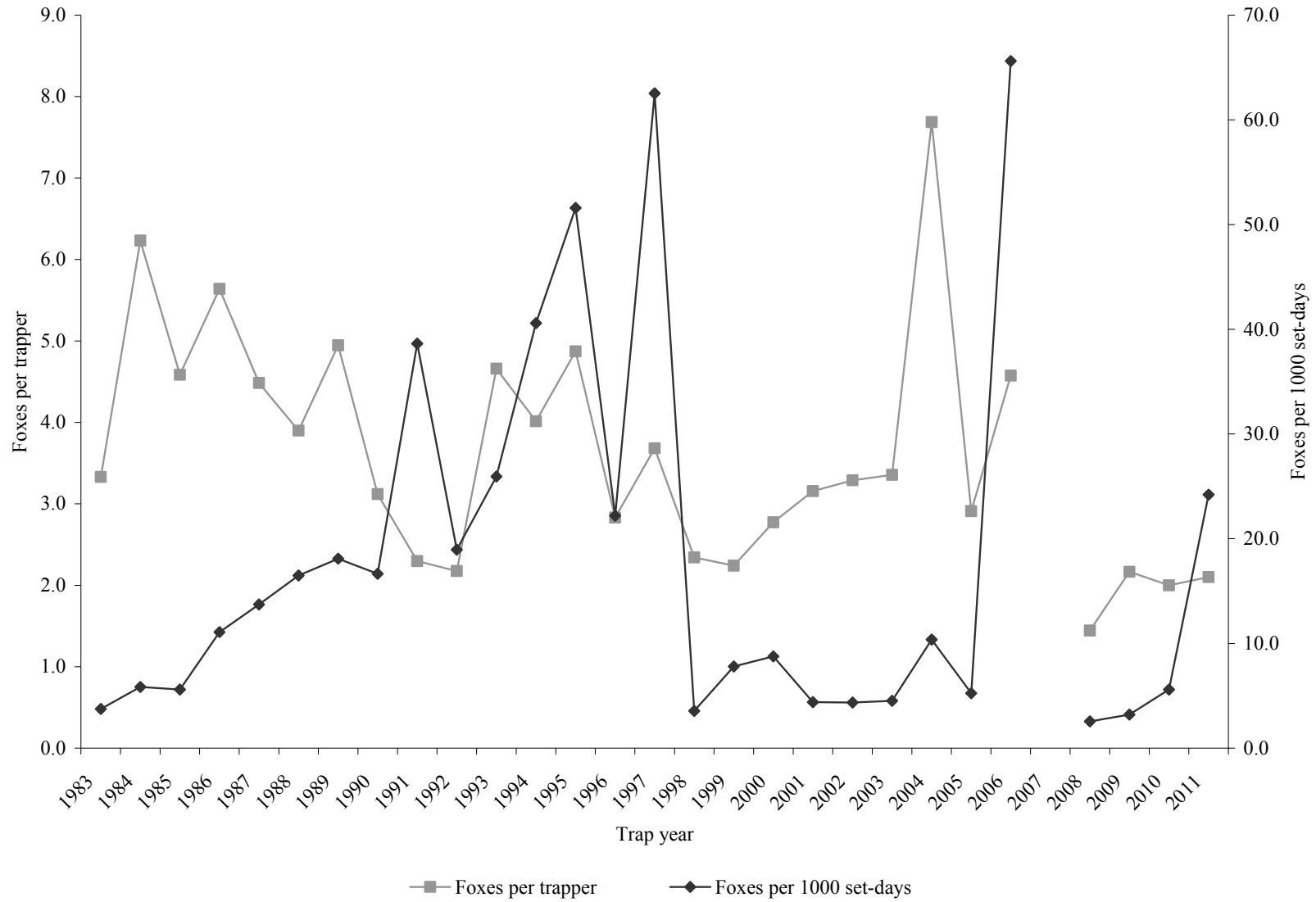
KIT FOX

Statewide kit fox harvest statistics, Utah 1983–2011.

Trap year	Trappers afield	Trap harvest	Set-days	Set-days / fox	Foxes / 1000 set-days	Foxes / trapper	Pelt price (\$)
1982–1983	109	363	96880	267	3.7	3.3	11.39
1983–1984	112	698	119504	171	5.8	6.2	11.99
1984–1985	142	651	116133	178	5.6	4.6	11.17
1985–1986	108	609	54928	90	11.1	5.6	7.50
1986–1987	122	547	39872	73	13.7	4.5	9.90
1987–1988	138	538	32630	61	16.5	3.9	10.69
1988–1989	130	643	35528	55	18.1	4.9	6.98
1989–1990	117	365	21926	60	16.6	3.1	3.19
1990–1991	81	186	4815	26	38.6	2.3	4.67
1991–1992	86	187	9869	53	18.9	2.2	2.78
1992–1993	41	191	7363	39	25.9	4.7	4.30
1993–1994	75	301	7415	25	40.6	4.0	4.69
1994–1995	109	531	10292	19	51.6	4.9	6.45
1995–1996	77	218	9826	45	22.2	2.8	6.25
1996–1997	44	162	2591	16	62.5	3.7	6.77
1997–1998	41	96	27046	282	3.5	2.3	3.50
1998–1999	75	168	21557	128	7.8	2.2	7.31
1999–2000	66	183	20890	114	8.8	2.8	2.90
2000–2001	51	161	36574	227	4.4	3.2	6.13
2001–2002	52	171	39215	229	4.4	3.3	10.72
2002–2003	90	302	66826	221	4.5	3.4	5.44
2003–2004	83	638	61572	97	10.4	7.7	5.38
2004–2005	89	259	49454	191	5.2	2.9	8.98
2005–2006*	40	183	—	15	65.6	4.6	10.92
2006–2007	65	—	—	—	—	—	10.50
2007–2008	27	39	15269	392	2.6	1.4	7.87
2008–2009	48	104	32683	314	3.2	2.2	7.61
2009–2010	19	38	6732	177	5.6	2.0	9.47
2010–2011	20	42	1735	41	24.2	2.1	12.68
Average	78	306	35153	115	8.7	3.9	7.52

*Due to outliers in the data, statewide set-days could not be calculated. Set-days per fox and foxes per 1000 set-days were calculated after removing outliers.

Statewide kit fox harvest trends, Utah 1983–2011.

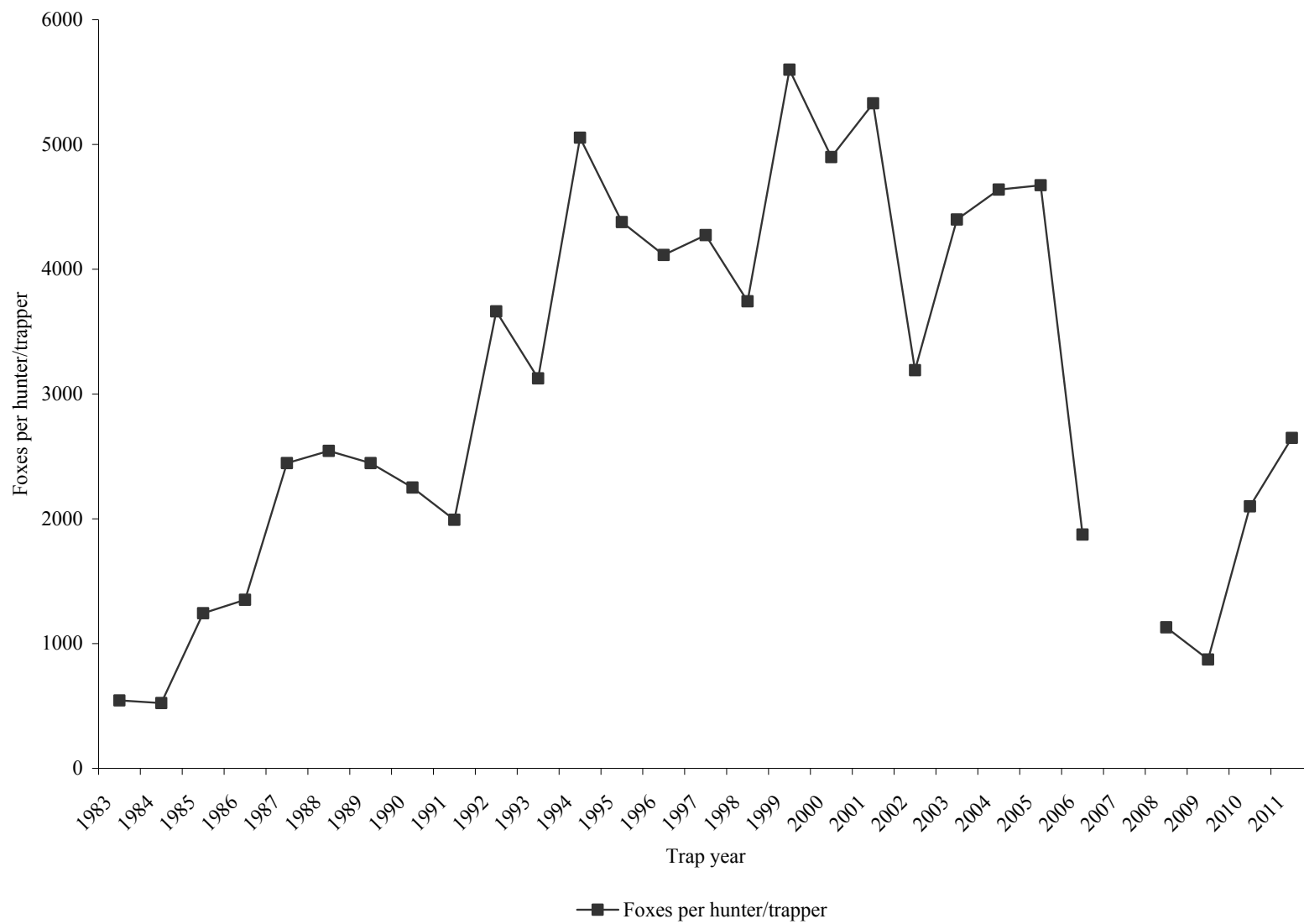


RED FOX

Statewide red fox harvest statistics, Utah 1983–2011.

Trap year	Hunters / trappers afield	Harvest			Foxes per hunter / trapper	Pelt price (\$)
		Trap	Non-trap	Total		
1982–1983	172	544	—	544	3.2	30.13
1983–1984	191	523	—	523	2.7	28.43
1984–1985	298	1244	—	1244	4.2	25.90
1985–1986	316	1351	—	1351	4.3	15.83
1986–1987	444	2446	—	2446	5.5	20.14
1987–1988	506	2545	—	2545	5.0	13.66
1988–1989	398	2446	—	2446	6.1	6.57
1989–1990	496	2250	—	2250	4.5	7.80
1990–1991	365	1993	—	1993	5.5	6.34
1991–1992	623	3663	—	3663	5.9	10.70
1992–1993	594	3126	—	3126	5.3	10.12
1993–1994	578	5055	—	5055	8.7	14.74
1994–1995	509	4378	—	4378	8.6	15.34
1995–1996	421	4115	—	4115	9.8	18.08
1996–1997	427	4274	—	4274	10.0	17.48
1997–1998	414	3744	—	3744	9.0	11.31
1998–1999	570	5600	—	5600	9.8	8.95
1999–2000	420	4900	—	4900	11.7	14.19
2000–2001	375	5330	—	5330	14.2	16.92
2001–2002	379	3192	—	3192	8.4	24.48
2002–2003	482	4399	—	4399	9.1	28.19
2003–2004	568	4639	—	4639	8.2	18.07
2004–2005	545	4674	—	4674	8.6	18.86
2005–2006	406	1874	—	1874	4.6	24.35
2006–2007	496	—	—	—	—	20.49
2007–2008	407	1130	—	1130	2.8	21.42
2008–2009	339	872	—	872	2.6	17.98
2009–2010	461	1908	192	2100	4.6	16.32
2010–2011	376	2435	213	2648	7.0	22.62
Average	434	3023	203	3038	7.0	17.43

Statewide red fox harvest trends, Utah 1983–2011.



Red fox harvest statistics by county and management unit, Utah 2011.

County	n	Trappers afield	Trap harvest	Traps set	Trapping days	Set-days	Set-days / fox	Foxes / 1000 set-days	Foxes / trapper
Beaver	2	7	3	52	589	5500	1833	0.5	0.4
Box Elder	4	13	105	183	769	13030	124	8.1	8.1
Iron	6	20	196	442	766	18746	96	10.5	9.8
Juab	0	—	—	—	—	—	—	—	—
Millard	2	7	3	85	196	2554	851	1.2	0.4
Tooele	4	13	43	75	232	2099	49	20.5	3.3
Great Basin totals	18	59	350	838	2554	41929	120	8.3	5.9
Cache	7	23	177	481	884	30732	174	5.8	7.7
Davis	2	7	82	56	151	1064	13	77.1	11.7
Morgan	4	13	49	131	239	3644	74	13.4	3.8
Piute	0	—	—	—	—	—	—	—	—
Rich	0	—	—	—	—	—	—	—	—
Salt Lake	4	13	111	111	360	3290	30	33.7	8.5
Sanpete	3	10	177	213	818	19643	111	9.0	17.7
Sevier	5	16	200	151	488	5101	26	39.2	12.5
Summit	2	7	10	16	7	7	1	1428.6	1.4
Utah	12	39	344	409	1028	16585	48	20.7	8.8
Wasatch	1	3	167	118	115	4125	25	40.5	55.7
Weber	7	23	115	144	668	4927	43	23.3	5.0
Rocky Mountain totals	47	154	1432	1830	4757	89118	62	16.1	9.3
Daggett	0	—	—	—	—	—	—	—	—
Duchesne	4	13	203	282	521	10326	51	19.7	15.6
Uintah	7	23	268	563	858	26401	99	10.2	11.7
Uintah Basin totals	11	36	471	845	1378	36726	78	12.8	13.1
Carbon	2	7	20	13	39	79	4	253.2	2.9
Emery	5	16	85	183	851	9789	115	8.7	5.3
Garfield	2	7	3	43	36	396	132	7.6	0.4
Grand	1	3	0	65	20	393	—	0.0	0.0
Kane	3	10	5	193	589	22292	4458	0.2	0.5
San Juan	1	3	0	3	3	3	—	0.0	0.0
Washington	0	—	—	—	—	—	—	—	—
Wayne	2	7	69	56	327	2783	40	24.8	9.9
Colorado Plateau totals	16	52	182	557	1866	35734	196	5.1	3.5
Unknown	1	3	0	3	3	3	—	0.0	0.0
Statewide totals*	87	285	2435	4073	10558	203511	84	12.0	8.5

*Statewide totals for sample size and trappers afield are not totals of the columns because trappers trapped multiple counties.

Red fox non-trapping harvest statistics by county and management unit, Utah 2011.

County	n	Hunters afield	Non-trap harvest	Hunter-days afield	Hunter-days / fox	Foxes / hunter
Beaver	1	3	0	7	—	0.0
Box Elder	5	16	29	151	5	1.8
Iron	2	7	13	23	2	1.9
Juab	2	7	10	101	10	1.4
Millard	3	10	26	167	6	2.6
Tooele	1	3	0	7	—	0.0
Great Basin totals	14	46	79	455	6	1.7
Cache	0	—	—	—	—	—
Davis	1	3	0	82	—	0.0
Morgan	1	3	7	13	2	2.3
Piute	1	3	0	7	—	0.0
Rich	0	—	—	—	—	—
Salt Lake	0	—	—	—	—	—
Sanpete	1	3	7	26	4	2.3
Sevier	0	—	—	—	—	—
Summit	2	7	0	23	—	0.0
Utah	3	10	7	59	8	0.7
Wasatch	4	13	10	69	7	0.8
Weber	1	3	26	20	1	8.7
Rocky Mountain totals	14	46	56	298	5	1.2
Daggett	0	—	—	—	—	—
Duchesne	0	—	—	—	—	—
Uintah	4	13	59	661	11	4.5
Uintah Basin totals	4	13	59	661	11	4.5
Carbon	0	—	—	—	—	—
Emery	2	7	3	23	8	0.4
Garfield	1	3	3	3	1	1.0
Grand	0	—	—	—	—	—
Kane	0	—	—	—	—	—
San Juan	1	3	0	65	—	0.0
Washington	2	7	13	13	1	1.9
Wayne	0	—	—	—	—	—
Colorado Plateau totals	6	20	20	105	5	1.0
Unknown	0	—	—	—	—	—
Statewide totals*	32	105	213	1519	7	2.0

*Statewide totals for sample size and hunters afield are not totals of the columns because hunters hunted multiple counties.

MARTEN

Statewide marten harvest statistics, Utah 1983–1999.

Trap year	Trappers afield	Trap harvest	Set-days	Set-days / marten	Martens / 1000 set-days	Martens / trapper	Pelt price (\$)
1982–1983	1	1	6	6	166.7	1.0	10.00
1983–1984	9	84	4704	56	17.9	9.5	20.00
1984–1985	9	12	6516	543	1.8	1.4	24.00
1985–1986	10	121	7381	61	16.4	11.6	23.00
1986–1987	11	22	8558	389	2.6	2.0	25.68
1987–1988	10	50	9750	195	5.1	5.0	40.00
1988–1989	6	10	1210	121	8.3	1.7	31.00
1989–1990	—	—	—	—	—	—	—
1990–1991	—	—	—	—	—	—	—
1991–1992	—	—	—	—	—	—	—
1992–1993	—	—	—	—	—	—	—
1993–1994	—	—	—	—	—	—	—
1994–1995	—	—	—	—	—	—	—
1995–1996	—	—	—	—	—	—	—
1996–1997	13	2	—	—	—	0.2	20.00
1997–1998	—	—	—	—	—	—	11.00
1998–1999	12	6	1228	205	4.9	0.5	7.11
Average	9	34	4919	144	7.0	3.8	21.18

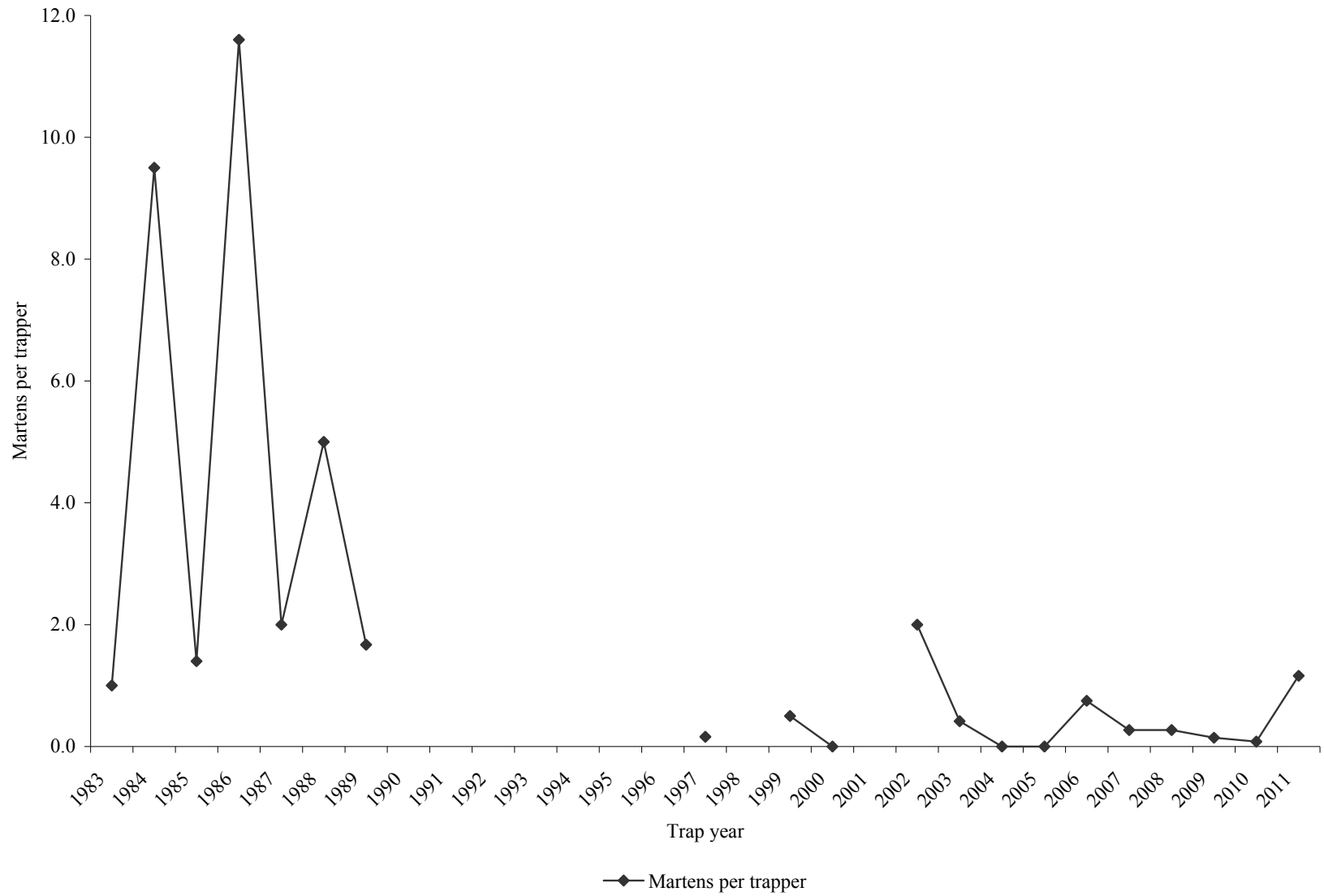
Statewide marten harvest statistics, Utah 2000–2011.

Trap year	Permits sold	Successful trappers	Male harvest	Female harvest	Total harvest	Success rate (%)*	Martens / trapper*
1999–2000	5	0	0	0	0	0.0	0.0
2000–2001	—	1	3	3	6	—	—
2001–2002	11	2	16	6	22	18.2	2.0
2002–2003	12	1	3	2	5	8.3	0.4
2003–2004	18	0	0	0	0	0.0	0.0
2004–2005	12	0	0	0	0	0.0	0.0
2005–2006**	16	2	7	4	12	12.5	0.8
2006–2007	26	3	6	1	7	11.5	0.3
2007–2008	22	4	7	14	21	18.2	1.0
2008–2009	28	1	2	2	4	3.6	0.1
2009–2010	25	1	2	0	2	4.0	0.1
2010–2011	31	2	24	12	0	36	6.5
Average	19	1	6	3	0	10	7.5

*Assumption: Every person who possessed a marten permit trapped or hunted.

**Includes one marten harvested of unknown sex.

Statewide marten harvest trends, Utah 1983–2011.

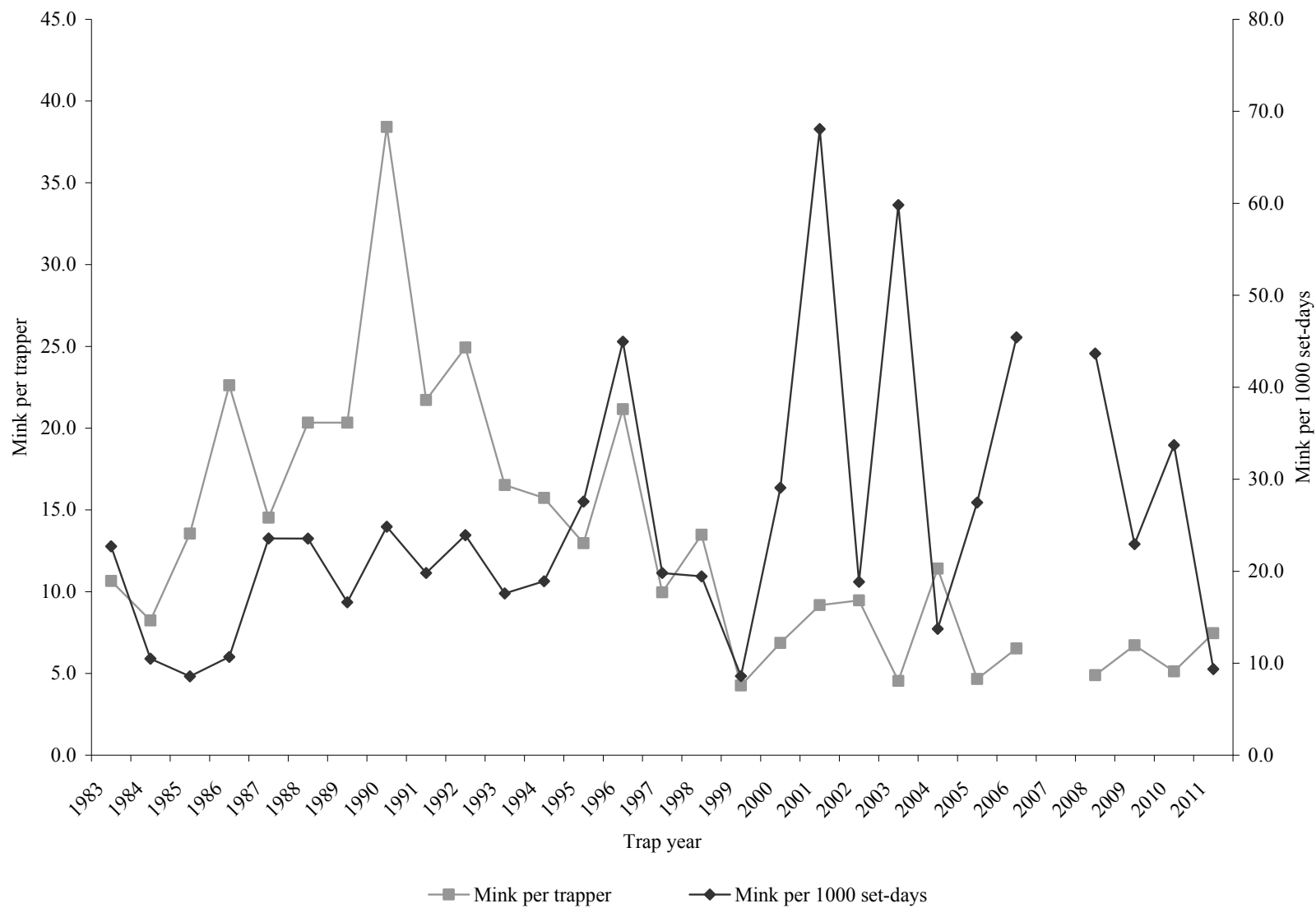


MINK

Statewide mink harvest statistics, Utah 1983–2011.

Trap year	Trappers afield	Trap harvest	Set-days	Set-days / mink	Mink / 1000 set-days	Mink / trapper	Pelt price (\$)
1982–1983	38	405	17841	44	22.7	10.7	10.85
1983–1984	46	379	36144	95	10.5	8.2	9.13
1984–1985	40	542	63252	117	8.6	13.6	10.27
1985–1986	37	837	78306	94	10.7	22.6	6.00
1986–1987	57	828	35135	42	23.6	14.5	10.63
1987–1988	51	1037	44030	42	23.6	20.3	12.25
1988–1989	42	854	51361	60	16.6	20.3	10.69
1989–1990	29	1114	44850	40	24.8	38.4	6.30
1990–1991	25	543	27406	50	19.8	21.7	6.33
1991–1992	29	723	30219	42	23.9	24.9	6.81
1992–1993	23	380	21615	57	17.6	16.5	7.50
1993–1994	30	472	24958	53	18.9	15.7	8.41
1994–1995	27	350	12695	36	27.6	13.0	8.38
1995–1996	25	529	11767	22	45.0	21.2	10.40
1996–1997	27	269	13583	50	19.8	10.0	10.95
1997–1998	25	337	17339	51	19.4	13.5	5.81
1998–1999	81	345	40110	116	8.6	4.3	7.11
1999–2000	61	419	14408	34	29.1	6.9	6.07
2000–2001	51	468	6875	15	68.1	9.2	4.92
2001–2002	30	284	15076	53	18.8	9.5	5.20
2002–2003	59	268	4481	17	59.8	4.5	2.07
2003–2004	59	673	49004	73	13.7	11.4	8.00
2004–2005	68	317	11540	36	27.5	4.7	8.98
2005–2006	34	222	4888	22	45.4	6.5	9.97
2006–2007	65	—	—	—	—	—	7.94
2007–2008	38	186	4260	23	43.7	4.9	9.33
2008–2009	36	242	10548	44	22.9	6.7	5.96
2009–2010	66	338	10029	30	33.7	5.1	8.00
2010–2011	65	485	51806	107	9.4	7.5	11.27
Average	44	495	26912	54	18.4	11.3	8.12

Statewide mink harvest trends, Utah 1983–2011.



Mink harvest statistics by county and management unit, Utah 2011.

County	n	Trappers afield	Trap harvest	Traps set	Trapping days	Set-days	Set-days / mink	Mink / 1000 set-days	Mink / trapper
Beaver	0	—	—	—	—	—	—	—	—
Box Elder	0	—	—	—	—	—	—	—	—
Iron	0	—	—	—	—	—	—	—	—
Juab	0	—	—	—	—	—	—	—	—
Millard	0	—	—	—	—	—	—	—	—
Tooele	0	—	—	—	—	—	—	—	—
Great Basin totals	0	—	—	—	—	—	—	—	—
Cache	6	20	69	278	521	20383	295	3.4	3.5
Davis	1	3	13	3	3	3	0	4333.3	4.3
Morgan	2	7	183	164	491	12768	70	14.3	26.1
Piute	0	—	—	—	—	—	—	—	—
Rich	0	—	—	—	—	—	—	—	—
Salt Lake	1	3	7	10	65	196	28	35.7	2.3
Sanpete	1	3	3	3	3	3	1	1000.0	1.0
Sevier	4	13	151	187	252	6882	46	21.9	11.6
Summit	1	3	13	13	144	576	44	22.6	4.3
Utah	1	3	7	13	20	79	11	88.6	2.3
Wasatch	1	3	33	16	16	82	2	402.4	11.0
Weber	1	3	3	3	3	3	1	1000.0	1.0
Rocky Mountain totals	19	62	482	691	1519	40976	85	11.8	7.8
Daggett	0	—	—	—	—	—	—	—	—
Duchesne	0	—	—	—	—	—	—	—	—
Uintah	1	3	0	49	98	1473	—	0.0	0.0
Uintah Basin totals	1	3	0	49	98	1473	—	0.0	0.0
Carbon	0	—	—	—	—	—	—	—	—
Emery	0	—	—	—	—	—	—	—	—
Garfield	0	—	—	—	—	—	—	—	—
Grand	0	—	—	—	—	—	—	—	—
Kane	0	—	—	—	—	—	—	—	—
San Juan	0	—	—	—	—	—	—	—	—
Washington	0	—	—	—	—	—	—	—	—
Wayne	0	—	—	—	—	—	—	—	—
Colorado Plateau totals	0	—	—	—	—	—	—	—	—
Unknown	1	3	3	150	3	9357	3119	0.3	1.0
Statewide totals*	20	65	485	890	1621	51806	107	9.4	7.5

*Statewide totals for sample size and trappers afield are not totals of the columns because trappers trapped multiple counties.

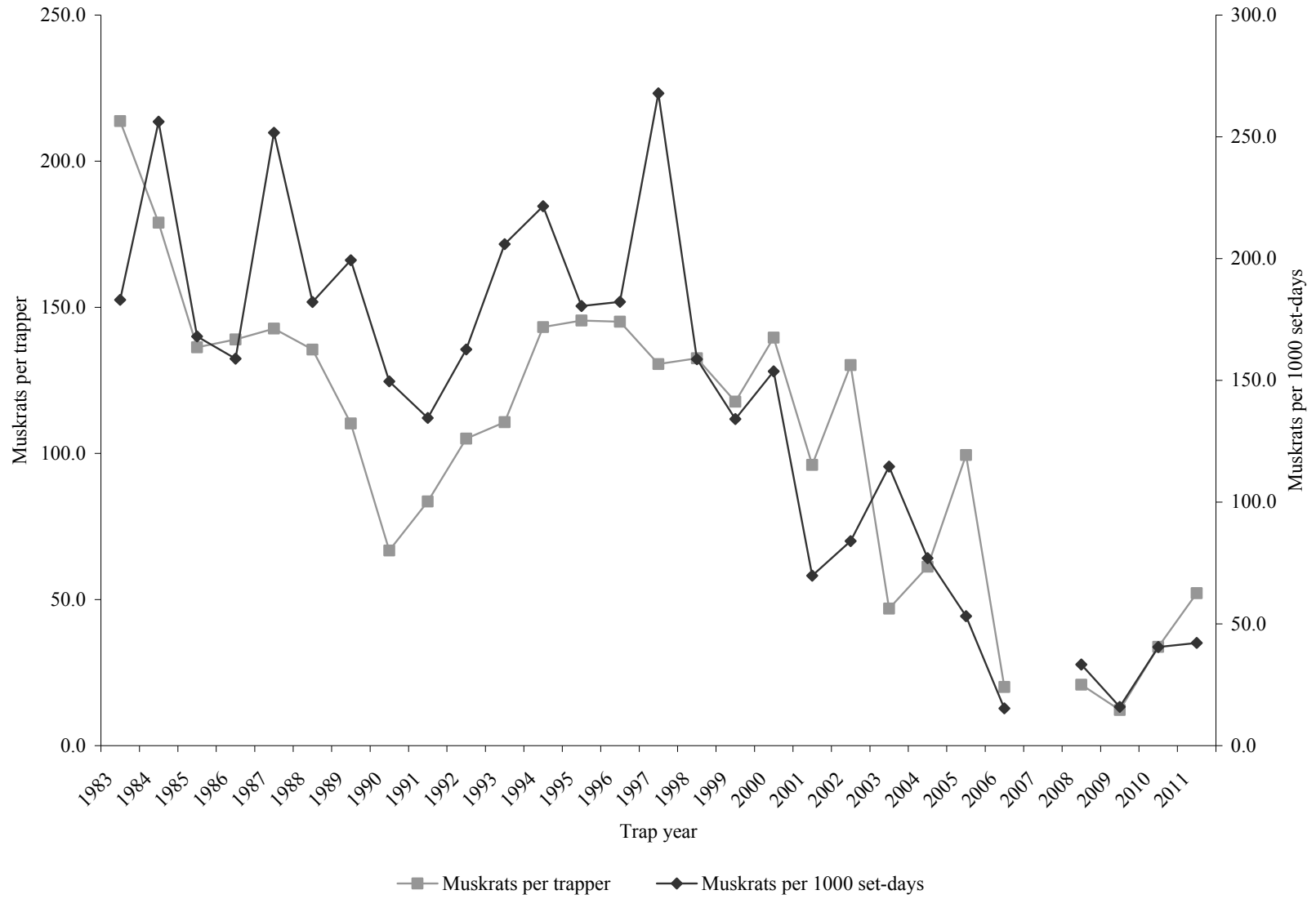
MUSKRAT

Statewide muskrat harvest statistics, Utah 1983–2011.

Trap year	Trappers afield	Trap harvest	Set-days	Set-days / muskrat	Musk rats / 1000 set-days	Musk rats / trapper	Pelt price (\$)
1982–1983	258	55137	301146	5	183.1	213.7	2.16
1983–1984	309	55298	215836	4	256.2	179.0	2.46
1984–1985	400	54526	324435	6	168.1	136.3	2.45
1985–1986	282	39195	246641	6	158.9	139.0	1.86
1986–1987	416	59368	235861	4	251.7	142.7	2.66
1987–1988	432	58560	321448	5	182.2	135.6	2.46
1988–1989	303	33400	167542	5	199.4	110.2	1.40
1989–1990	253	16898	112946	7	149.6	66.8	0.89
1990–1991	85	7102	52769	7	134.6	83.6	0.91
1991–1992	186	19547	120128	6	162.7	105.1	1.60
1992–1993	105	11623	56443	5	205.9	110.7	1.18
1993–1994	157	22488	101514	5	221.5	143.2	1.89
1994–1995	195	28369	157144	6	180.5	145.5	1.74
1995–1996	181	26260	144096	5	182.2	145.1	2.09
1996–1997	179	23371	87251	4	267.9	130.6	3.59
1997–1998	203	26907	169547	6	158.7	132.5	2.01
1998–1999	186	21895	163222	7	134.1	117.7	1.73
1999–2000	151	21086	137152	7	153.7	139.6	1.00
2000–2001	108	10376	148608	14	69.8	96.1	1.58
2001–2002	115	14979	178362	12	84.0	130.3	2.60
2002–2003	135	6334	55261	9	114.6	46.9	1.59
2003–2004	176	10777	139915	13	77.0	61.2	1.57
2004–2005	151	15016	282593	19	53.1	99.4	1.57
2005–2006*	41	824	—	66	15.3	20.1	3.97
2006–2007	81	—	—	—	—	—	3.31
2007–2008	80	1665	49940	30	33.3	20.9	3.04
2008–2009	98	1198	75114	63	15.9	12.2	2.49
2009–2010	158	5341	131959	25	40.5	33.8	4.93
2010–2011	141	7361	174285	24	42.2	52.2	5.40
Average	192	23389	161154	7	145.1	121.9	2.28

*Due to outliers in the data, statewide set-days could not be calculated. Set-days per fox and foxes per 1000 set-days were calculated after removing outliers.

Statewide muskrat harvest trends, Utah 1983–2011.



Muskrat harvest statistics by county and management unit, Utah 2011.

County	n	Trappers afield	Trap harvest	Traps set	Trapping days	Set-days	Set-days / muskrat	Musk rats / 1000 set-days	Musk rats / trapper
Beaver	0	—	—	—	—	—	—	—	—
Box Elder	2	7	746	386	262	18137	24	41.1	106.6
Iron	0	—	—	—	—	—	—	—	—
Juab	2	7	59	101	69	1968	33	30.0	8.4
Millard	0	—	—	—	—	—	—	—	—
Tooele	1	3	13	7	33	65	5	200.0	4.3
Great Basin totals	5	16	818	494	363	20170	25	40.6	51.1
Cache	9	29	1558	904	1172	68431	44	22.8	53.7
Davis	4	13	1702	818	589	38304	23	44.4	130.9
Morgan	1	3	409	164	98	4911	12	83.3	136.3
Piute	0	—	—	—	—	—	—	—	—
Rich	0	—	—	—	—	—	—	—	—
Salt Lake	0	—	—	—	—	—	—	—	—
Sanpete	2	7	151	92	62	1087	7	138.9	21.6
Sevier	3	10	661	157	72	1997	3	331.0	66.1
Summit	2	7	49	46	92	183	4	267.8	7.0
Utah	10	33	769	399	684	12133	16	63.4	23.3
Wasatch	1	3	115	33	49	491	4	234.2	38.3
Weber	6	20	979	507	740	23385	24	41.9	49.0
Rocky Mountain totals	38	124	6393	3120	3559	150922	24	42.4	51.6
Daggett	0	—	—	—	—	—	—	—	—
Duchesne	0	—	—	—	—	—	—	—	—
Uintah	2	7	121	95	147	1981	16	61.1	17.3
Uintah Basin totals	2	7	121	95	147	1981	16	61.1	17.3
Carbon	0	—	—	—	—	—	—	—	—
Emery	1	3	0	16	164	818	—	0.0	0.0
Garfield	0	—	—	—	—	—	—	—	—
Grand	0	—	—	—	—	—	—	—	—
Kane	0	—	—	—	—	—	—	—	—
San Juan	0	—	—	—	—	—	—	—	—
Washington	1	3	29	20	65	393	14	73.8	9.7
Wayne	0	—	—	—	—	—	—	—	—
Colorado Plateau totals	2	7	29	36	229	1211	42	23.9	4.1
Unknown	0	—	—	—	—	—	—	—	—
Statewide totals*	43	141	7361	3745	4299	174285	24	42.2	52.2

*Statewide totals for sample size and trappers afield are not totals of the columns because trappers trapped multiple counties.

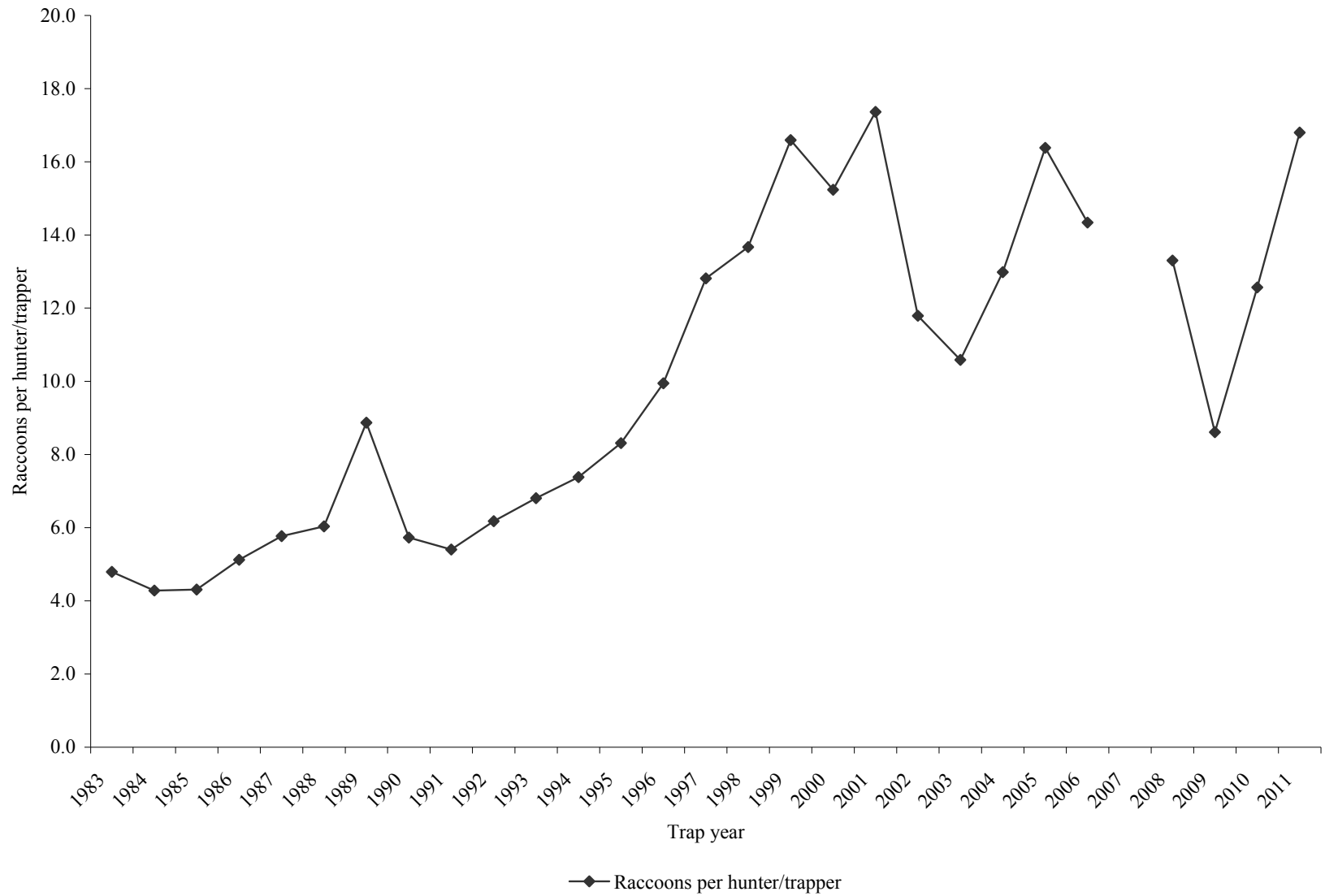
RACCOON

Statewide raccoon harvest statistics, Utah 1983–2011.

Trap year	Hunters / trappers afield	Harvest			Raccoons per hunter / trapper	Pelt price (\$)
		Trap	Non-trap	Total		
1982–1983	178	853	—	853	4.8	12.34
1983–1984	192	822	—	822	4.3	13.51
1984–1985	329	1417	—	1417	4.3	12.85
1985–1986	290	1485	—	1485	5.1	9.26
1986–1987	418	2412	—	2412	5.8	12.62
1987–1988	434	2619	—	2619	6.0	9.41
1988–1989	350	3104	—	3104	8.9	7.71
1989–1990	430	2464	—	2464	5.7	5.78
1990–1991	214	1156	—	1156	5.4	4.65
1991–1992	368	2273	—	2273	6.2	4.72
1992–1993	272	1851	—	1851	6.8	2.57
1993–1994	306	2259	—	2259	7.4	6.98
1994–1995	364	3025	—	3025	8.3	6.06
1995–1996	293	2914	—	2914	9.9	8.07
1996–1997	330	4228	—	4228	12.8	13.35
1997–1998	365	4989	—	4989	13.7	9.98
1998–1999	468	7765	—	7765	16.6	4.95
1999–2000	349	5317	—	5317	15.2	5.67
2000–2001	327	5678	—	5678	17.4	5.16
2001–2002	321	3785	—	3785	11.8	8.04
2002–2003	378	4001	—	4001	10.6	5.62
2003–2004	434	5634	—	5634	13.0	10.63
2004–2005	391	6405	—	6405	16.4	6.54
2005–2006	230	1761	1537	3298	14.3	9.83
2006–2007	325	—	—	—	—	7.18
2007–2008	300	2414	1576	3990	13.3	10.85
2008–2009	275	1639	729	2368	8.6	6.21
2009–2010	349	3439	946	4385	12.6	7.09
2010–2011	292	3958	1417	5375	16.8	8.17
Average	330	3202	1241	3424	3.8	8.13

*Prior to the 2005–2006 season, harvest by hunting and trapping was not collected separately. As such, trapping harvest estimates include all harvest by hunters and trappers.

Statewide raccoon harvest trends, Utah 1983–2011.



Raccoon trapping harvest statistics by county and management unit, Utah 2011.

County	n	Trappers afield	Trap harvest	Traps set	Trapping days	Set-days	Set-days / raccoon	Raccoons / 1000 set-days	Raccoons / trapper
Beaver	0	—	—	—	—	—	—	—	—
Box Elder	4	13	92	180	945	16484	179	5.6	7.1
Iron	2	7	75	26	525	1837	24	40.8	10.7
Juab	1	3	3	3	10	10	3	300.0	1.0
Millard	0	—	—	—	—	—	—	—	—
Tooele	1	3	10	10	46	138	14	72.5	3.3
Great Basin totals	8	26	180	220	1525	18468	103	9.7	6.9
Cache	13	43	413	541	1040	19092	46	21.6	9.6
Davis	2	7	223	79	230	4067	18	54.8	31.9
Morgan	4	13	118	134	364	4556	39	25.9	9.1
Piute	0	—	—	—	—	—	—	—	—
Rich	0	—	—	—	—	—	—	—	—
Salt Lake	5	16	272	125	361	2361	9	115.2	17.0
Sanpete	2	7	256	328	443	22139	86	11.6	36.6
Sevier	8	26	958	387	797	11010	11	87.0	36.8
Summit	3	10	144	75	279	1017	7	141.6	14.4
Utah	12	39	400	276	679	6084	15	65.7	10.3
Wasatch	3	10	13	82	180	1394	107	9.3	1.3
Weber	5	16	289	43	423	1177	4	245.5	18.1
Rocky Mountain totals	57	187	3086	2070	4795	72896	24	42.3	16.5
Daggett	0	—	—	—	—	—	—	—	—
Duchesne	2	7	62	36	26	203	3	305.4	8.9
Uintah	2	7	66	62	118	1555	24	42.4	9.4
Uintah Basin totals	4	13	128	98	144	1758	14	72.8	9.8
Carbon	1	3	10	16	33	164	16	61.0	3.3
Emery	6	20	489	200	1476	13382	27	36.5	24.5
Garfield	1	3	16	36	197	2165	135	7.4	5.3
Grand	1	3	16	3	197	197	12	81.2	5.3
Kane	0	—	—	—	—	—	—	—	—
San Juan	0	—	—	—	—	—	—	—	—
Washington	3	10	23	33	112	800	35	28.8	2.3
Wayne	1	3	10	3	3	3	0	3333.3	3.3
Colorado Plateau totals	13	43	564	292	2017	16710	30	33.8	13.1
Unknown	0	—	—	—	—	—	—	—	—
Statewide totals*	72	236	3958	2680	8482	109833	28	36.0	16.8

*Statewide totals for sample size and trappers afield are not totals of the columns because trappers trapped multiple counties.

Raccoon non-trapping harvest statistics by county and management unit, Utah 2011.

County	n	Hunters afield	Non-trap harvest	Hunter-days afield	Hunter-days / raccoon	Raccoons / hunter
Beaver	0	—	—	—	—	—
Box Elder	1	3	33	49	1	11.0
Iron	3	10	151	121	1	15.1
Juab	1	3	16	148	9	5.3
Millard	0	—	—	—	—	—
Tooele	0	—	—	—	—	—
Great Basin totals	5	16	200	318	2	12.5
Cache	2	7	7	26	4	1.0
Davis	1	3	66	16	0	22.0
Morgan	3	10	62	134	2	6.2
Piute	0	—	—	—	—	—
Rich	1	3	16	33	2	5.3
Salt Lake	1	3	20	16	1	6.7
Sanpete	0	—	—	—	—	—
Sevier	1	3	66	33	1	22.0
Summit	1	3	108	59	1	36.0
Utah	6	20	128	380	3	6.4
Wasatch	0	—	—	—	—	—
Weber	1	3	49	16	0	16.3
Rocky Mountain totals	17	56	521	715	1	9.3
Daggett	0	—	—	—	—	—
Duchesne	2	7	23	39	2	3.3
Uintah	2	7	13	30	2	1.9
Uintah Basin totals	4	13	36	69	2	2.8
Carbon	1	3	33	43	1	11.0
Emery	2	7	554	505	1	79.1
Garfield	0	—	—	—	—	—
Grand	1	3	7	10	1	2.3
Kane	0	—	—	—	—	—
San Juan	0	—	—	—	—	—
Washington	1	3	66	66	1	22.0
Wayne	0	—	—	—	—	—
Colorado Plateau totals	5	16	659	623	1	41.2
Unknown	0	—	—	—	—	—
Statewide totals*	24	79	1417	1725	1	17.9

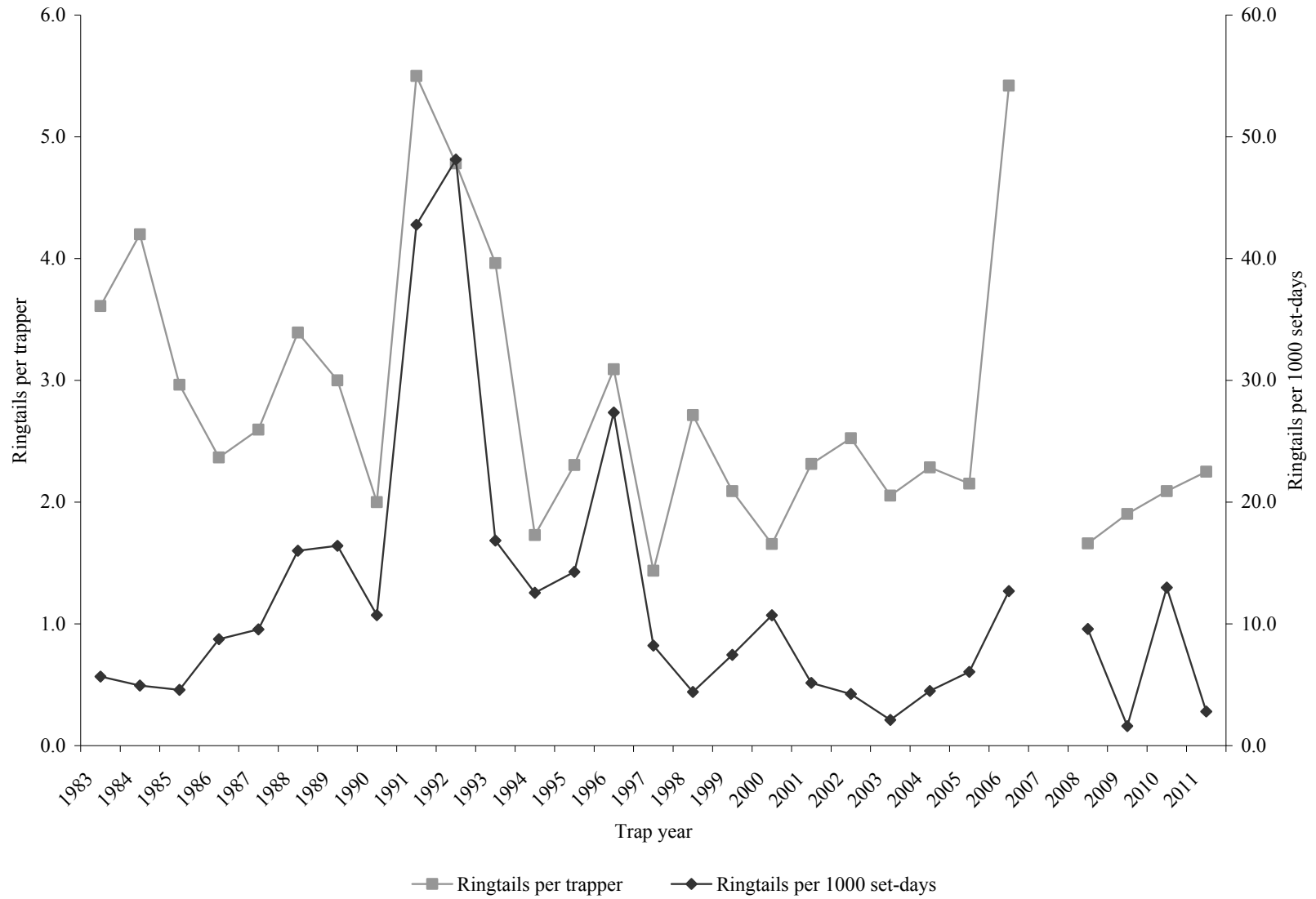
*Statewide totals for sample size and hunters afield are not totals of the columns because hunters hunted multiple counties.

RINGTAIL

Statewide ringtail harvest statistics, Utah 1983–2011.

Trap year	Trappers afield	Trap harvest	Set-days	Set-days / ringtail	Ringtails / 1000 set-days	Ringtails / trapper	Pelt price (\$)
1982–1983	90	325	57319	176	5.7	3.6	4.40
1983–1984	90	378	76599	203	4.9	4.2	3.96
1984–1985	85	252	54987	218	4.6	3.0	3.15
1985–1986	68	161	18398	114	8.8	2.4	2.69
1986–1987	79	205	21456	105	9.6	2.6	3.64
1987–1988	79	268	16748	62	16.0	3.4	2.40
1988–1989	62	186	11335	61	16.4	3.0	5.70
1989–1990	66	132	12313	93	10.7	2.0	2.65
1990–1991	18	99	2314	23	42.8	5.5	3.50
1991–1992	46	220	4570	21	48.1	4.8	3.22
1992–1993	27	107	6349	59	16.9	4.0	3.97
1993–1994	37	64	5096	80	12.6	1.7	4.04
1994–1995	69	159	11141	70	14.3	2.3	6.41
1995–1996	44	136	4970	37	27.4	3.1	6.96
1996–1997	32	46	5597	122	8.2	1.4	11.68
1997–1998	21	57	12919	227	4.4	2.7	2.99
1998–1999	66	138	18510	134	7.5	2.1	4.17
1999–2000	61	101	9432	93	10.7	1.7	7.03
2000–2001	51	118	22886	194	5.2	2.3	6.00
2001–2002	40	101	23803	236	4.2	2.5	10.29
2002–2003	56	115	54456	474	2.1	2.1	5.20
2003–2004	42	96	21380	223	4.5	2.3	6.83
2004–2005	59	127	20966	165	6.1	2.2	11.12
2005–2006	19	103	8115	79	12.7	5.4	9.31
2006–2007	98	—	—	—	—	—	12.37
2007–2008	65	108	11279	104	9.6	1.7	14.86
2008–2009	31	59	36618	621	1.6	1.9	10.70
2009–2010	22	46	3544	77	13.0	2.1	15.00
2010–2011	16	36	12807	356	2.8	2.3	18.91
Average	53	141	20211	144	7.0	2.7	7.01

Statewide ringtail harvest trends, Utah 1983–2011.



SKUNK

Statewide skunk harvest statistics, Utah 1983–2005.

Trap year	Trappers afield	Trap harvest	Set-days	Set-days / skunk	Skunks / 1000 set-days	Skunks / trapper	Pelt price (\$)
1982–1983	140	1540	30862	20	49.9	11.0	3.00
1983–1984	144	1262	57379	45	22.0	8.8	2.85
1984–1985	111	1097	47084	43	23.3	9.9	2.17
1985–1986	195	1741	59745	34	29.1	8.9	—
1986–1987	188	1851	42416	23	43.6	9.8	—
1987–1988	185	2404	34235	14	70.2	13.0	1.05
1988–1989	132	966	18409	19	52.5	7.3	0.30
1989–1990	173	1289	20279	16	63.6	7.5	0.30
1990–1991	82	645	8183	13	78.8	7.9	0.30
1991–1992	151	1037	18802	18	55.2	6.9	4.00
1992–1993	132	922	29638	32	31.1	7.0	5.30
1993–1994	175	1465	23185	16	63.2	8.4	7.35
1994–1995	183	1438	24744	17	58.1	7.9	9.29
1995–1996	175	1753	20650	12	84.9	10.0	6.63
1996–1997	142	1726	25728	15	67.1	12.2	6.00
1997–1998	182	2890	36040	12	80.2	15.9	4.11
1998–1999	219	3227	58578	18	55.1	14.7	5.67
1999–2000	188	2730	52166	19	52.3	14.5	8.50
2000–2001	220	3857	113545	29	34.0	17.5	8.69
2001–2002	214	1798	100936	56	17.8	8.4	6.79
2002–2003	237	1732	72927	42	23.7	7.3	4.24
2003–2004	295	2305	119328	52	19.3	7.8	10.00
2004–2005	280	4264	148611	35	28.7	15.2	4.64
Average	180	1910	50586	27	37.8	10.6	4.82

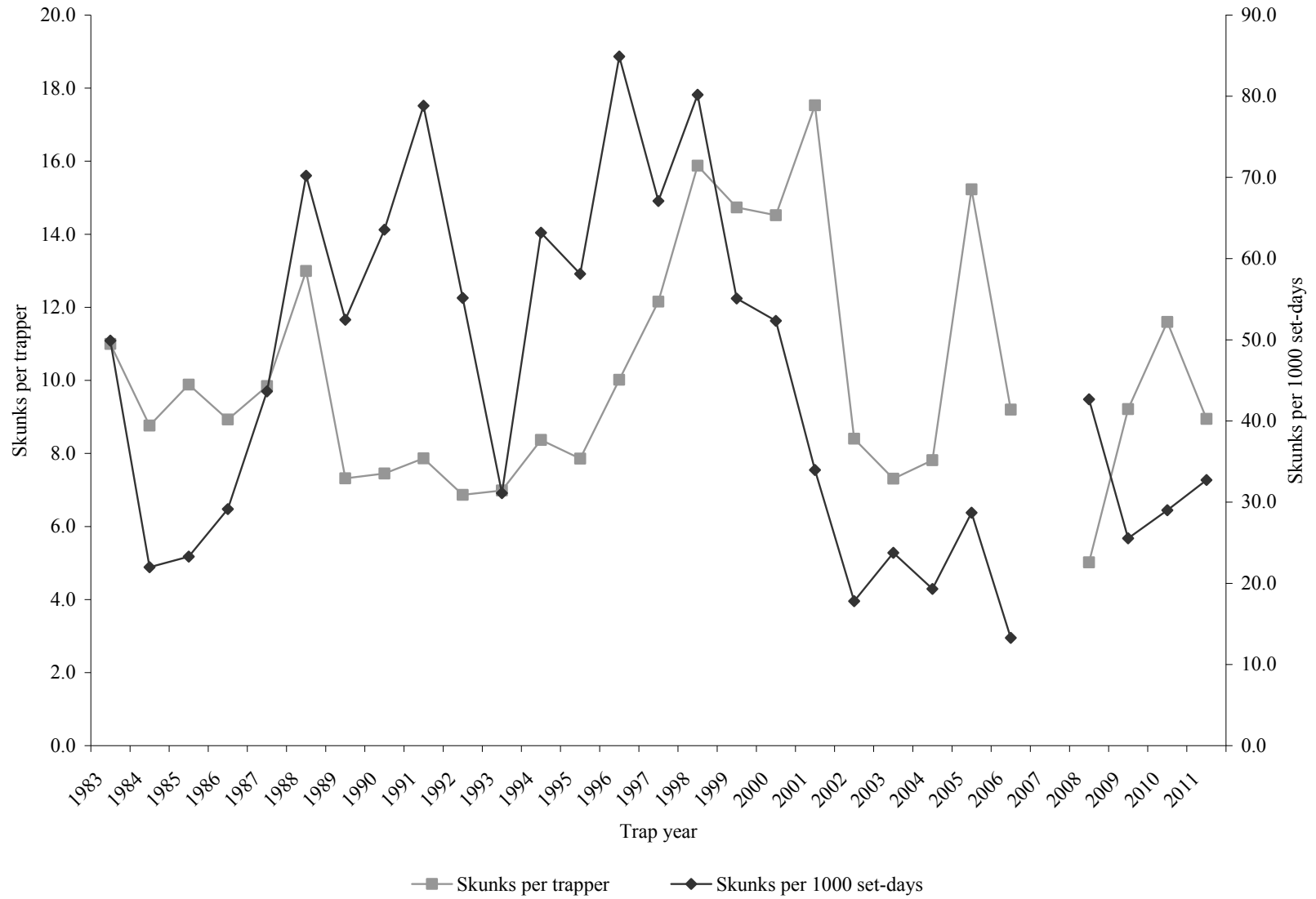
Statewide striped skunk harvest statistics, Utah 2006–2011.

Trap year	Trappers afield	Trap harvest	Set-days	Set-days / skunk	Skunks / 1000 set-days	Skunks / trapper	Pelt price (\$)
2005–2006	95	1043	82551	79	12.6	11.0	5.37
2006-2007	138	—	—	—	—	—	6.07
2007-2008	144	848	20699	24	41.0	5.9	4.52
2008-2009	143	1697	61563	36	27.6	11.9	3.15
2009-2010	124	1638	54596	33	30.0	13.2	6.47
2010-2011	154	1597	45693	29	35.0	10.4	5.29
Average	133	1365	53020	39	25.7	10.3	5.15

Statewide spotted skunk harvest statistics, Utah 2006–2011.

Trap year	Trappers afield	Trap harvest	Set-days	Set-days / skunk	Skunks / 1000 set-days	Skunks / trapper	Pelt price (\$)
2005–2006	34	144	6797	47	21.2	4.2	5.37
2006-2007	106	—	—	—	—	—	12.42
2007-2008	34	45	231	5	194.8	1.3	12.07
2008-2009	67	238	14179	60	16.8	3.6	8.00
2009-2010	19	21	2601	124	8.1	1.1	15.00
2010-2011	33	76	5425	71	14.0	2.3	15.00
Average	49	105	5847	56	17.9	2.1	11.31

Statewide skunk harvest trends, Utah 1983–2011.



Striped skunk harvest statistics by county and management unit, Utah 2011.

County	n	Trappers afield	Trap harvest	Traps set	Trapping days	Set-days	Set-days / skunk	Skunks / 1000 set-days	Skunks / trapper
Beaver	0	—	—	—	—	—	—	—	—
Box Elder	3	10	193	170	982	23375	121	8.3	19.3
Iron	2	7	72	10	10	16	0	4500.0	10.3
Juab	0	—	—	—	—	—	—	—	—
Millard	0	—	—	—	—	—	—	—	—
Tooele	1	3	13	3	3	3	0	4333.3	4.3
Great Basin totals	6	20	278	183	995	23395	84	11.9	13.9
Cache	3	10	79	43	187	1136	14	69.5	7.9
Davis	0	—	—	—	—	—	—	—	—
Morgan	3	10	183	52	314	3294	18	55.6	18.3
Piute	0	—	—	—	—	—	—	—	—
Rich	1	3	10	3	20	20	2	500.0	3.3
Salt Lake	0	—	—	—	—	—	—	—	—
Sanpete	2	7	72	7	622	622	9	115.8	10.3
Sevier	6	20	347	210	301	6567	19	52.8	17.4
Summit	1	3	10	3	3	3	0	3333.3	3.3
Utah	6	20	160	33	167	615	4	260.2	8.0
Wasatch	0	—	—	—	—	—	—	—	—
Weber	4	13	118	13	426	426	4	277.0	9.1
Rocky Mountain totals	26	85	979	363	2040	12683	13	77.2	11.5
Daggett	0	—	—	—	—	—	—	—	—
Duchesne	0	—	—	—	—	—	—	—	—
Uintah	4	13	111	59	255	1853	17	59.9	8.5
Uintah Basin totals	4	13	111	59	255	1853	17	59.9	8.5
Carbon	0	—	—	—	—	—	—	—	—
Emery	6	20	151	56	701	5513	37	27.4	7.6
Garfield	0	—	—	—	—	—	—	—	—
Grand	0	—	—	—	—	—	—	—	—
Kane	3	10	13	108	98	1526	117	8.5	1.3
San Juan	1	3	23	3	29	29	1	793.1	7.7
Washington	1	3	3	49	46	688	229	4.4	1.0
Wayne	1	3	29	3	3	3	0	9666.7	9.7
Colorado Plateau totals	12	39	219	219	877	7759	35	28.2	5.6
Unknown	1	3	10	3	3	3	0	3333.3	3.3
Statewide totals*	47	154	1597	828	4171	45693	29	35.0	10.4

*Statewide totals for sample size and trappers afield are not totals of the columns because trappers trapped multiple counties.

WEASEL

Statewide weasel harvest statistics, Utah 1983–2011.

Trap year	Trappers afield	Trap harvest	Set-days	Set-days / weasel	Weasels / 1000 set-days	Weasels / trapper	Pelt price (\$)
1982–1983	19	59	959	16	61.5	3.1	1.00
1983–1984	22	33	3872	117	8.5	1.5	0.00
1984–1985	46	75	7956	106	9.4	1.6	0.75
1985–1986	33	67	9992	149	6.7	2.0	0.00
1986–1987	50	123	5205	42	23.6	2.5	1.50
1987–1988	61	212	5874	28	36.1	3.5	1.18
1988–1989	24	91	791	9	115.0	3.8	0.25
1989–1990	25	33	5492	166	6.0	1.3	0.25
1990–1991	14	31	1248	40	24.8	2.2	0.30
1991–1992	17	19	168	9	113.1	1.1	0.30
1992–1993	24	28	284	10	98.6	1.2	0.30
1993–1994	20	31	208	7	149.0	1.6	5.11
1994–1995	18	13	15451	1189	0.8	0.7	1.57
1995–1996	24	299	20482	69	14.6	12.5	3.08
1996–1997	11	13	312	24	41.7	1.2	7.40
1997–1998	20	28	3101	111	9.0	1.4	3.03
1998–1999	15	33	5190	157	6.4	2.2	5.50
1999–2000	34	66	1058	16	62.4	1.9	—
2000–2001	36	155	5288	34	29.3	4.3	8.50
2001–2002	6	13	0	0	—	2.2	—
2002–2003	6	3	118	39	25.4	0.5	4.76
2003–2004	18	58	4215	73	13.8	3.2	—
2004–2005	25	85	1935	23	43.9	3.4	2.90
2005–2006	41	190	8172	43	23.3	4.6	—
2006–2007	49	—	—	—	—	—	6.26
2007–2008	11	15	585	39	25.6	1.3	2.99
2008–2009	14	11	245	22	44.9	0.8	—
2009–2010	29	47	9219	196	5.1	1.6	7.64
2010–2011	23	17	1329	78	12.8	0.7	7.21
Average	25	66	4241	64	15.6	2.6	2.99

Statewide weasel harvest trends, Utah 1983–2011.

