

# UTAH FURBEARER ANNUAL REPORT 2006–2007 and 2007–2008



Publication No. 08-40



# **UTAH FURBEARER ANNUAL REPORT 2006–2007 and 2007–2008**

Prepared by:

**Heather H. Bernal**  
Biometrician

and

**Kevin Bunnell**  
Mammals Program Coordinator

Publication No. 08-40

Annual Performance Report for Federal Aid Project W-65-M segments 55 & 56

State of Utah  
Department of Natural Resources  
DIVISION OF WILDLIFE RESOURCES

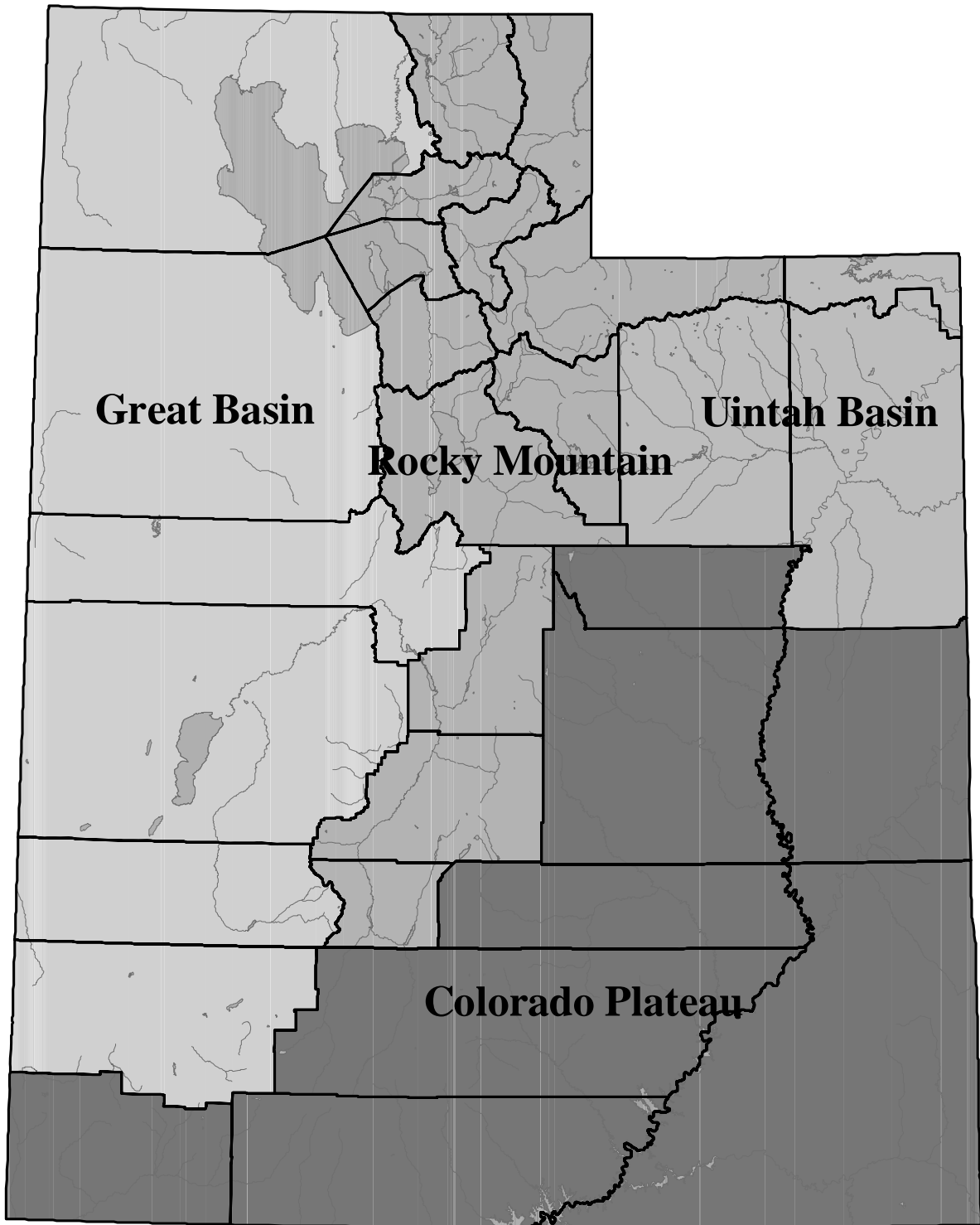
An Equal Opportunity Employer

**James F. Karpowitz**  
Director

## TABLE OF CONTENTS

Utah furbearer management units.....	1
Definitions.....	2
Introduction.....	3
Methods.....	3
Results.....	5
Harvest by species.....	12
Bobcat .....	13
Coyote .....	25
Raccoon.....	29
Badger .....	33
Beaver .....	36
Gray Fox .....	39
Kit Fox .....	42
Red Fox .....	44
Marten.....	47
Mink.....	49
Muskrat .....	51
Ringtail.....	53
Skunk .....	55
Weasel.....	59

**UTAH FURBEARER MANAGEMENT UNITS**



## DEFINITIONS

**Incidental take:** Furbearers harvested in traps that were intended for a different furbearer species.

**Trap year:** Year during which a particular trapping season ended. For example, for simplification in figures, trap year 2008 corresponds to the 2007–2008 furbearer season as outlined in the 2007–2008 Furbearer Proclamation.

**Total trappers:** Number of furbearer license holders who trapped furbearers during a particular trap year. License holders who took furbearers by means other than trapping, including shooting or with the aid of dogs, are included in this figure except for bobcat, coyote, and raccoon.

**Total harvest:** Number of furbearers of a particular species taken by means of trapping and hunting by furbearer license holders. This figure does not include harvest of unprotected wildlife, such as coyote, muskrat, red fox, raccoon, or striped skunk, by persons who did not purchase a furbearer license, nor does it include harvest of furbearers taken for creating a nuisance or causing damage.

**Total set-days:** Number of traps set during the furbearer season for the trapping of a particular species, multiplied by the number of days these traps were in the field. This figure pertains only to trapping, and does not include days afield by furbearer hunters or pursuers.

**Pelt price:** Average price paid for pelts of a specific furbearer species harvested in Utah, obtained mainly from a summary of the prices bid at the Utah Trappers Association fur auction, as well as prices from a survey of registered furdealers buying pelts harvested in Utah.

**Wildlife Services harvest (coyote only):** Number of coyotes killed by USDA-APHIS Wildlife Services in a particular year. Wildlife Services yearly harvest summaries apply to their fiscal year, which begins October 1 and ends September 30, although most harvest takes place during spring.

## INTRODUCTION

The furbearer harvest report presents furbearer harvest and trapper/hunter effort trends across the state of Utah, based on data collected from furbearer trappers and hunters. This report represents the furbearer portion of the Annual Performance Report for Federal Aid Project W-65-M, segments 55 and 56, grant agreement periods October 1, 2006 through September 30, 2007 and October 1, 2007 through September 30, 2008, respectively. These Federal Aid projects cover the 2006–2007 and 2007–2008 trapping seasons. Additionally, this report presents statewide trends since the early 1980s and population trend indicators for bobcats as well as the estimated economic value of Utah’s furbearer harvest each year. Furbearer harvest and trapper/hunter effort may be more driven by pelt price than by availability, so annual fur harvest should not be used as the sole means to assess/project population sizes.

### Bag Limits and Season Dates

Furbearers include badger, beaver, bobcat, gray fox, kit fox, mink, marten, ringtail, spotted skunk, and weasel, and a furbearer license is required to harvest any of these species, during the specified harvest season. An additional permit is required to harvest bobcat or marten. Coyote, muskrat, red fox, raccoon, and striped skunk are not under the jurisdiction of the Division, and/or are unprotected. Those species may be taken year-round without a license; therefore, results presented in this report do not include harvest by persons who did not purchase a furbearer license. It is prohibited to take black-footed ferret, fisher, lynx, otter, wolf, and wolverine. There are no bag limits for furbearers, except bobcats.

Furbearer season dates and bobcat possession limit, Utah 2006–2007 and 2007–2008 seasons.

Season	Bobcat possession limit	Season dates			
		Coyote, Red Fox, Muskrat, Raccoon, Striped Skunk	Badger, Kit Fox, Gray Fox, Ringtail, Spotted Skunk, Weasel, Marten	Beaver and Mink	Bobcat
2006-2007	6	Year-round	10/09/06–2/12/07	10/09/06–4/16/07	11/15/06–2/11/07
2007-2008	6	Year-round	10/06/07–2/10/08	10/06/07–4/14/08	11/14/07–2/10/08

## METHODS

### Furbearer Harvest Survey

In 2006, the Utah Division of Wildlife Resources switched from a mail questionnaire to a telephone survey. Telephone surveys are thought to be better than mail questionnaire because they achieve a more random sample, thus, reducing the response bias caused by trappers who did not harvest animals not returning their questionnaires. Telephone surveys also allow you contact a smaller number of license holders to achieve the same level of accuracy. The accuracy of that phone survey is dependent upon the following assumptions: (1) a random sample was achieved (i.e. there was no response bias by those who harvested successfully versus those who did not),

(2) respondents recorded or remembered data accurately and did not guess or lie, and (3) respondents clearly understood the questions.

For the telephone survey, a random sample with a target sample size of 12% and 26% of all license holders (2006-2007 and 2007-2008, respectively) was used to determine furbearer harvest and effort. The results of those surveys were projected for all license holders by dividing the total number of furbearer licensees for that trap year by the number of telephone survey responses. For bobcats, we determined the total number of bobcat trappers/hunters that were surveyed, and this number was projected by the total number of furbearer trappers/hunters who purchased one or more bobcat permits. For bobcats and martens, it was required by proclamation that the pelts of animals harvested in Utah be brought to a Division office or officer to have a permanent tag attached and to surrender the lower jaw. Bobcat and marten harvest data presented in this report, such as county of kill and sex of harvest, were collected at this time; as such, this information is not projected. Additional information on bobcat harvest, such as harvest effort by method, number of sets, and number of days was determined by telephone survey. Due to the small number of marten trappers in Utah, we did not attempt to survey marten trappers. Instead, since a separate permit is required to trap marten, we assumed that all those who purchased a marten permit attempted to trap marten.

Due to errors in the 2006-2007 furbearer season telephone survey, harvest and effort data for the 2006-2007 season was unavailable for all species but bobcat and marten. However, we were still able to obtain estimates of the number of trappers afield for each species, as well as average pelt prices. Bobcat and marten data is also presented for the 2006-2007 season because of the mandatory check-in requirement for these species.

In an effort to obtain information on how many furbearers of a given species were taken incidentally, furbearer trappers were asked the question "Did you harvest any (species) in traps that were set for a different species, and, if so, how many?" Because survey respondents gave information on number of traps set and number of days spent trapping for furbearers taken incidentally, these furbearers were included in the total harvest and harvest effort statistics.

## **Data Analysis**

When dealing with survey data, it is not uncommon to have outliers (i.e., data that do not fall within realistic values). A repeated problem in the furbearer survey was having a trapper report a high harvest with little trap effort (i.e. 10 furbearers harvest with 1 trap set for 1 day). For this situation we assumed that the total harvest was reported correctly, but the trapping effort was either reported or recorded erroneously. By doing so, these data records were included in the total statewide harvest of a furbearer species, but the total statewide number of traps set, trapping days and set-days could not be determined. To obtain estimates of furbearers/trapper, set-days/furbearer, and furbearers/1000 set-days, we used the remaining data points, excluding outliers.

Because some furbearer species in Utah are rare or not highly sought after by trappers, it is not possible to achieve sufficient sample sizes for these species to make valid statistical inferences. Although the trends for statewide harvest and effort are still valid, at the county level, the harvest

and effort estimates have low precision and are likely inaccurate. As such, results by county are only reported for species with a sample size  $\geq 20$ .

### **Bobcat Age Determination and Other Data Methods**

To determine age structure of the bobcat harvest, a canine tooth from each bobcat jaw was sectioned, and aged using cementum annuli by Matson's Lab in Milltown, Montana. Survival rates were estimated using the Chapman-Robson estimator. Pelt prices were obtained mainly from a summary of the prices bid at the Utah Trappers Association fur auction, as well as from a survey of registered furdealers buying pelts harvested in Utah.

## **RESULTS**

### **License Sales and General Survey Results**

Beginning December 1, 2005, furbearer licenses were valid for 365 days from the date of purchase. Because of this change, we now use the 365-day period of May 1 to April 30 to determine the total number of furbearer licenses sold for the furbearer season. Furbearer license sales have continued to increase, with a total of 2,110 sold for the 2006-2007 season and a total of 2,140 sold for the 2007-2008 season. The percentage of license holders who bought a furbearer license but did not attempt to harvest furbearers during the season has also increased (26.7% in 2006-2007 and 31.8% in 2007-2008). The increase in total furbearer licenses sold each year was offset by the increase in trappers who purchased a license but did not attempt to harvest, causing the number of trappers afield in 2006-2007 and 2007-2008 to be only slightly above the 10-year average of 1,243.

### **Furbearer Harvest Statistics**

Total estimated furbearer harvest for 2007–2008 was 20,234, which was down significantly from the 10-year average. The low estimate for muskrat harvest contributed most to decline in total furbearer harvest, but harvest of badger, beaver, gray fox, kit fox, red fox, mink, raccoon, ringtail, skunk, and weasel were also all below the 10-year average, while bobcat, coyote, and marten harvest were above. The number of trappers attempting to harvest a given furbearer species was down for all species except coyote, beaver, and striped skunk.

### **Pelt Price and Economic Value**

The estimated economic value of Utah's furbearer harvest was more than \$1.3 million in 2008. This was largely driven by the high bobcat harvest and bobcat pelt price, which was almost \$950,000 in revenue alone. Coyote and raccoon also contributed largely to the total economic value.



Summary of furbearer license sales and survey responses, Utah 1983–2008.

Trap year	Furbearer licenses sold			License holders sampled		Projection factor	% license holders not afield
	Resident	Nonresident	Total	Total	Percent (%)		
1982–1983	—	—	1325	664	50.1	—	—
1983–1984	—	—	1367	616	45.1	—	—
1984–1985	—	—	1491	806	54.1	—	—
1985–1986	—	—	1424	680	47.8	—	—
1986–1987	—	—	1342	585	43.6	—	—
1987–1988	—	—	1576	731	46.4	—	—
1988–1989	—	—	1318	721	54.7	—	—
1989–1990	—	—	1084	597	55.1	—	—
1990–1991	—	—	949	513	54.1	—	30.0
1991–1992	—	—	1210	689	56.9	—	2.2
1992–1993	—	—	1426	857	60.1	—	16.0
1993–1994	—	—	1315	—	—	—	—
1994–1995	—	—	1287	585	45.5	—	7.0
1995–1996	—	—	1240	683	55.1	—	21.2
1996–1997	—	—	1131	606	53.6	—	25.4
1997–1998	—	—	1190	498	41.8	—	19.5
1998–1999	—	—	1191	395	33.2	—	19.8
1999–2000	1172	39	1211	458	37.8	2.64	11.6
2000–2001	1204	20	1224	420	34.3	2.91	12.4
2001–2002	956	21	977	302	30.9	3.24	11.6
2002–2003	1409	40	1449	514	35.5	2.82	16.3
2003–2004	1729	47	1776	597	33.6	2.97	16.9
2004–2005	1830	65	1895	615	32.5	3.08	18.2
2005–2006	1631	57	1688	260	15.4	6.49	27.7
2006–2007	2029	81	2110	262	12.4	8.05	26.7
2007–2008	2085	55	2140	563	26.3	3.80	31.8
Average	1561	47	1608	439	27.3	3.67	18.5

\*Starting in 2006, a telephone survey replaced the mail questionnaire.

Statewide furbearer harvest estimates by species, Utah 1999–2008.

Species	Trap year										Average 1999–2008
	1999	2000	2001	2002	2003	2004	2005	2006	2007	2008	
Badger	318	433	450	275	541	453	432	120	**	275	366
Beaver	2950	1830	1992	1689	1720	1781	2664	2239	**	745	1957
Bobcat	2092	1430	2008	1866	2176	2027	1954	2926	3377	2437	2229
Coyote	4337	3510	4966	4354	5446	6660	7173	4229	**	7637	5368
Gray fox	870	925	1159	1326	1942	1749	942	603	**	1093	1179
Kit fox	168	183	161	171	302	638	259	183	**	39	234
Red fox	5600	4900	5330	3192	4399	4639	4674	1874	**	1130	3971
Marten	6	0	6	22	5	0	0	12	7	21	8
Mink	345	419	468	284	268	673	317	222	**	186	354
Muskrat	21895	21086	10376	14979	6334	10777	15016	824	**	1665	11439
Raccoon	7765	5317	5678	3785	4001	5634	6405	3298	**	3990	5097
Ringtail	138	101	118	101	115	96	127	103	**	108	112
Skunk (total)	3227	2730	3857	1798	1732	2305	4264	—	**	—	2845
Striped skunk	—	—	—	—	—	—	—	1043	**	848	946
Spotted skunk	—	—	—	—	—	—	—	144	**	45	95
Weasel	33	66	155	13	3	58	85	190	**	15	69
Total	49744	42930	36724	33855	28984	37490	44312	18010	**	20234	34698

Prior to the 2005–2006 trap season, spotted skunk and striped skunk harvest were not split out.

\*Harvest numbers for bobcat and marten were obtained when pelts were affixed with permanent possession tags; as such, total harvest numbers are not projections.

\*\*Due to errors in the 2006-2007 furbearer season telephone survey, harvest and effort data is unavailable for all species but bobcat and marten.

Statewide furbearer trapping harvest statistics by species, Utah 2008.

Species	Trappers afield	Trap harvest	Set-days	Furbearers / trapper	Set-days / furbearer	Furbearers / 1000 set-days	Pelt price (\$)
Badger	171	275	26850	1.6	97.6	10.2	18.07
Beaver	133	745	17545	5.6	23.6	42.5	17.50
Bobcat	985	2091	836519	2.1	400.1	2.5	388.43
Coyote	457	4055	379568	8.9	93.6	10.7	21.74
Gray fox	217	1093	139231	5.0	127.4	7.9	39.19
Kit fox	27	39	15269	1.5	391.5	2.6	7.87
Red fox	407	1130	196865	2.8	174.2	5.7	21.42
Marten	22	21	—	—	—	—	—
Mink	38	186	4260	4.9	22.9	43.7	9.33
Muskrat	80	1665	49940	20.9	30.0	33.3	3.04
Raccoon	216	2414	121883	11.2	50.5	19.8	10.85
Ringtail	65	108	11279	1.7	104.4	9.6	14.86
Striped skunk	144	848	20699	5.9	24.4	41.0	4.52
Spotted skunk	34	45	231	1.3	5.1	194.8	12.07
Weasel	11	15	585	1.3	39.0	25.6	2.99
Total	1460*	14730	—	—	—	—	—

\*Total trappers afield for the entire season.

Statewide furbearer non-trapping harvest by species, Utah 2008.

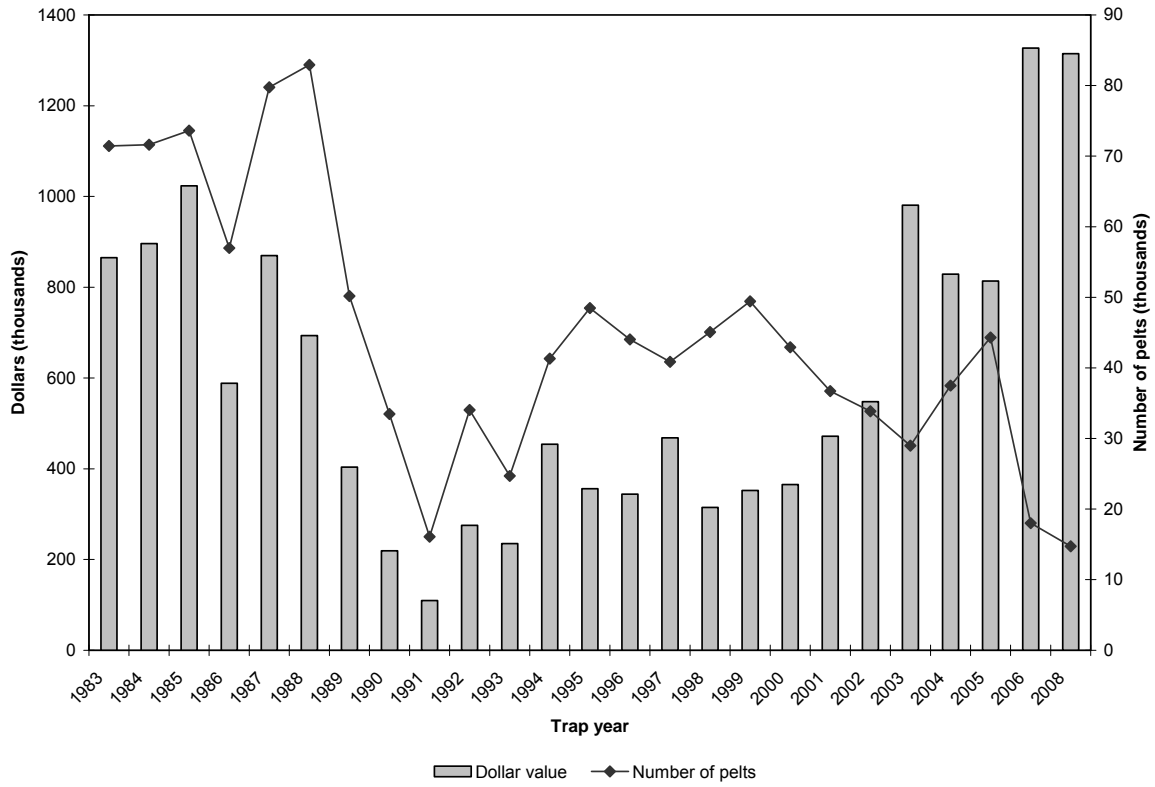
Species	Hunters afield	Non-trap harvest	Hunting days	Furbearers / hunter	Days / furbearer
Bobcat	557	346	10089	0.6	29.2
Coyote	469	3582	8003	7.6	2.2
Raccoon	92	1576	2261	17.1	1.4
Total	1118	5504	20353	—	—

Number of furbearers harvested in traps set for other species, Utah 2008.

Species	Incidental harvest	Total harvest	% incidental harvest
Badger	163	275	59.3
Beaver	8	745	1.1
Bobcat	376	2437	15.4
Coyote	821	7637	10.8
Gray fox	581	1093	53.2
Kit fox	4	39	10.3
Red fox	865	1130	76.5
Marten	0	21	0.0
Mink	30	186	16.1
Muskrat	110	1665	6.6
Raccoon	494	3990	12.4
Ringtail	61	108	56.5
Striped skunk	368	848	43.4
Spotted skunk	34	45	75.6
Weasel	0	15	0.0
Total	3915	20234	19.3

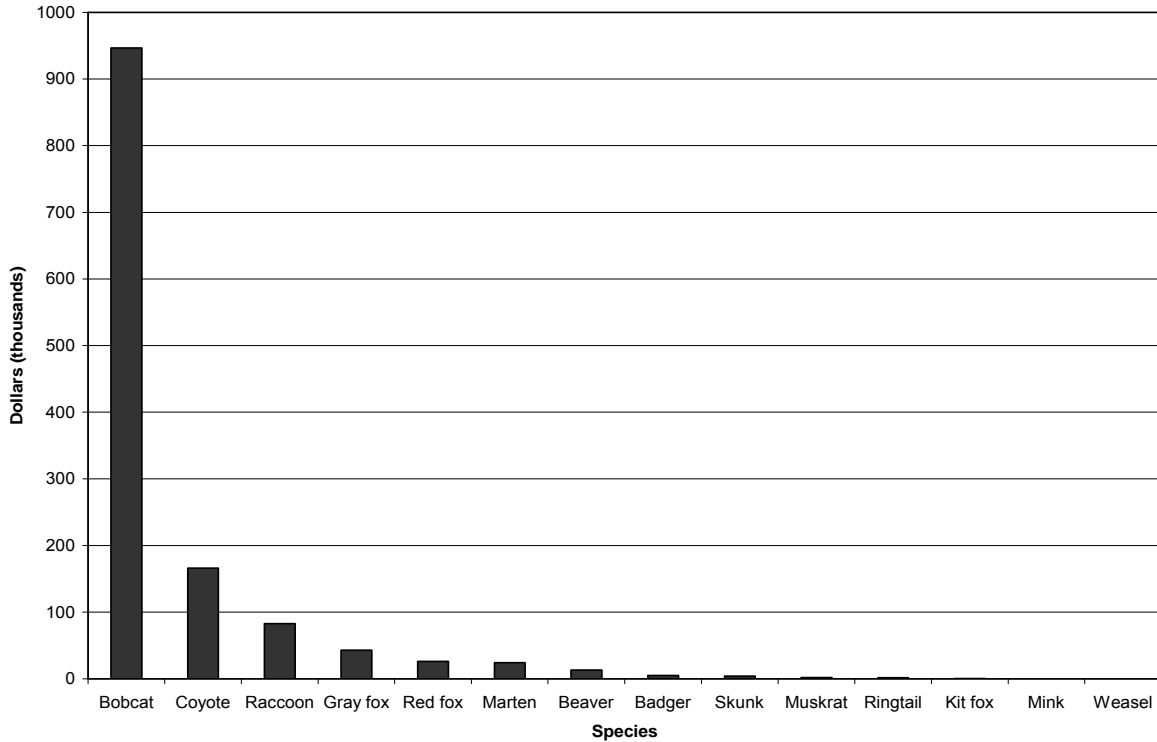
\*Incidental harvest is defined as species caught in traps intended for other species.

Estimated economic value of Utah's furbearer harvest, Utah 1983–2008.



\*No data available for 2007.

Proportional economic value of Utah's furbearer harvest by species, Utah 2008.



Economic value (in dollars) of furbearer species in Utah's annual furbearer harvest, Utah 1983–2008.

Trap year	Economic value (\$)														Total economic value (\$)
	Badger	Beaver	Bobcat	Coyote	Gray fox	Kit fox	Red fox	Marten	Mink	Muskrat	Raccoon	Ringtail	Skunk*	Weasel	
1982–1983	5945	20418	434340	203240	37352	7244	16391	10	4394	119096	10526	1430	4620	59	865064
1983–1984	4794	25211	498960	152358	34353	8369	14869	1680	3460	136033	11105	1497	3597	0	896285
1984–1985	6794	43796	511464	193809	48147	7272	32220	288	4948	133589	18208	794	22126	56	1023511
1985–1986	1964	47463	301410	95322	21147	4568	21386	2783	5022	72903	13751	433	0	0	588152
1986–1987	3239	93684	316416	166417	36848	5415	49262	565	8802	157919	30439	746	0	185	869938
1987–1988	2772	69184	250635	107590	35779	5751	34765	2000	12703	144058	24645	643	2524	250	693300
1988–1989	1943	27264	230282	27104	14837	4488	16070	310	9129	46760	23932	1060	290	23	403492
1989–1990	1749	40991	85986	28913	5825	1164	17550	0	7018	15039	14242	350	387	8	219223
1990–1991	1250	10066	45849	20892	2060	869	12636	0	3437	6463	5375	347	194	9	109446
1991–1992	2015	13338	100672	65100	2762	520	39194	0	4924	31275	10729	708	4148	6	275390
1992–1993	2308	7399	105390	57740	2988	821	31635	0	2850	13715	4757	425	4887	8	234924
1993–1994	1709	16888	148962	128971	8244	1412	74511	0	3970	42502	15768	259	10768	158	454120
1994–1995	4555	32270	90536	65890	7417	3425	67159	0	2933	49362	18332	1019	13359	20	356277
1995–1996	2904	20502	71241	67722	8818	1363	74399	0	5502	54883	23516	947	11622	613	344032
1996–1997	2888	27474	127995	75238	4257	1097	74710	0	2946	83902	56444	537	10356	96	467939
1997–1998	1786	39328	75138	34862	3019	336	42345	0	1958	54083	49790	170	11878	85	314778
1998–1999	5393	27642	116859	46840	6055	1228	50120	43	2453	37878	38437	575	18297	182	352002
1999–2000	5646	20093	118175	67181	6124	531	69531	0	2543	21086	30147	710	23205	—	364973
2000–2001	7731	20557	187868	71461	9272	987	90184	—	2303	16394	29298	708	33517	1318	471598
2001–2002	4290	18326	275534	70404	15355	1833	78140	—	1477	38945	30431	1039	12208	—	547983
2002–2003	7428	16288	588238	177649	24217	1643	124008	—	555	10071	22486	598	7344	14	980538
2003–2004	8480	25112	411826	171428	18959	3432	83827	0	5384	16920	59889	656	23050	0	828964
2004–2005	5901	37056	433104	144177	13009	2326	88152	0	2847	23575	41889	1412	19785	247	813480
2005–2006	1802	39742	1049147	128773	14562	1998	45632	—	2213	3271	32419	959	6374	—	1326894
2007–2008	4969	13038	946604	166028	42835	307	26192	24205	0	1735	82934	1605	4036	0	1314488
Average	4010	30125	300905	101404	16970	2736	50995	1518	4151	53258	27980	785	9943	152	604672

Economic value was determined by multiplying average pelt price by total harvest for a given species.

Species with missing values did contribute to Utah's annual furbearer harvest but were not included in the economic value estimate due to missing average pelt price or harvest data. No data was available for 2006–2007.

\*From 2001 to 2005, average striped skunk pelt price was used to calculate all skunk (spotted and striped) economic value.

## **HARVEST BY SPECIES**

# BOBCAT

Statewide bobcat trapping harvest statistics, Utah 1983–2008.

Trap year	Trappers afield	Trapping harvest	Set-days	Bobcats / trapper	Set-days / bobcat	Bobcats / 1000 set-days	Pelt price (\$)
1982–1983	1145	2540	469979	2.2	185.0	5.4	171.00
1983–1984	1050	2640	401841	2.5	152.2	6.6	189.00
1984–1985	1253	2532	559480	2.0	221.0	4.5	202.00
1985–1986	1083	1530	411493	1.4	268.9	3.7	197.00
1986–1987	1036	1024	224778	1.0	219.5	4.6	309.00
1987–1988	1108	1023	252680	0.9	247.0	4.0	245.00
1988–1989	941	1042	175990	1.1	168.9	5.9	221.00
1989–1990	1167	843	142360	0.7	168.9	5.9	102.00
1990–1991	542	527	76218	1.0	144.6	6.9	87.00
1991–1992	726	968	118293	1.3	122.2	8.2	104.00
1992–1993	827	1171	139949	1.4	119.5	8.4	90.00
1993–1994	900	1256	191367	1.4	152.4	6.6	118.60
1994–1995	914	1293	210522	1.4	162.8	6.1	70.02
1995–1996	749	896	108594	1.2	121.2	8.3	79.51
1996–1997	615	866	138899	1.4	160.4	6.2	147.80
1997–1998	619	1234	255147	2.0	206.8	4.8	60.89
1998–1999	1031	2092	633774	2.0	303.0	3.3	55.86
1999–2000	828	1430	238152	1.7	166.5	6.0	82.64
2000–2001	852	2008	399609	2.4	199.0	5.0	93.56
2001–2002	666	1866	342678	2.8	183.6	5.4	147.66
2002–2003	984	2176	593692	2.2	272.8	3.7	270.33
2003–2004	1133	2027	701383	1.8	346.0	2.9	203.17
2004–2005	1300	1954	462019	1.5	236.4	4.2	221.65
2005–2006	979	2625	757380	2.7	288.5	3.5	358.56
2006–2007	1017	3037	877870	3.0	289.1	3.5	197.53
2007–2008	985	2091	836519	2.1	400.1	2.5	388.43
Average	940	1642	373872	1.7	227.7	4.4	169.74

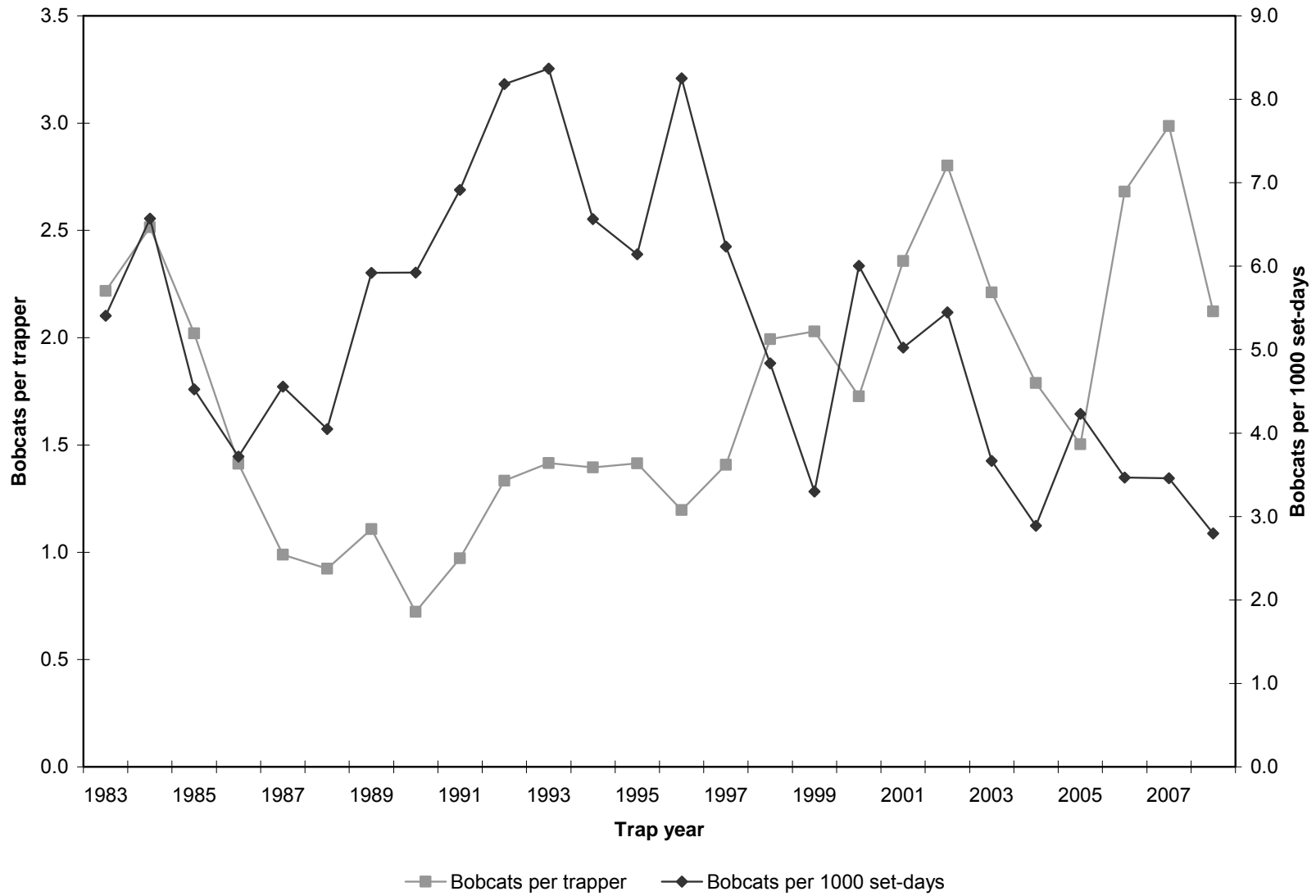
\*Prior to the 2005–2006 season, harvest by hunting and trapping was not collected separately. As such, trapping harvest estimates include all harvest by hunters and trappers.

Statewide bobcat non-trapping harvest statistics, Utah 2006–2008.

Year	Hunters afield	Non-trap harvest	Hunter-days afield	Bobcats / hunter	Hunter-days / bobcat	Pelt price (\$)
2005–2006	612	301	8194	0.5	27.2	358.56
2006–2007	440	340	10408	0.8	30.6	197.53
2007–2008	557	346	10089	0.6	29.2	388.43
Average	536	329	9564	0.6	29.1	314.84



Statewide bobcat trapping harvest trends, Utah 1983–2008.



Bobcat trapping harvest statistics by county and management unit, Utah 2007.

County	n	Trappers afield	Trapping harvest*	Traps set	Trapping days	Set-days	Bobcats / trapper	Set-days / bobcat	Bobcats / 1000 set-days
Beaver	5	49	113	577	2162	28605	2.3	253.1	4.0
Box Elder	7	68	121	1634	3248	95871	1.8	792.3	1.3
Iron	8	78	247	1203	2397	49922	3.2	202.1	4.9
Juab	4	39	218	450	616	7366	5.6	33.8	29.6
Millard	4	39	118	1487	1810	101154	3.0	857.2	1.2
Tooele	6	59	116	704	2133	31687	2.0	273.2	3.7
Great Basin totals	34	332	933	6055	12366	314605	2.8	337.2	3.0
Cache	3	29	7	333	1898	21600	0.2	3085.7	0.3
Davis	0	—	3	—	—	—	—	—	—
Morgan	3	29	4	401	1389	22354	0.1	5588.5	0.2
Piute	0	—	59	—	—	—	—	—	—
Rich	0	—	17	—	—	—	—	—	—
Salt Lake	0	—	6	—	—	—	—	—	—
Sanpete	2	20	87	401	440	11152	4.4	128.2	7.8
Sevier	1	10	176	59	205	1233	17.6	7.0	142.7
Summit	1	10	19	98	871	8707	1.9	458.3	2.2
Utah	5	49	78	509	1790	15134	1.6	194.0	5.2
Wasatch	0	—	14	—	—	—	—	—	—
Weber	1	10	15	59	39	235	1.5	15.7	63.8
Rocky Mountain totals	16	157	485	1860	6632	80415	3.1	165.8	6.0
Daggett	2	20	18	293	900	17316	0.9	962.0	1.0
Duchesne	2	20	96	274	1311	17922	4.8	186.7	5.4
Uintah	8	78	152	1487	2925	43543	1.9	286.5	3.5
Uintah Basin totals	12	118	266	2054	5136	78781	2.3	296.2	3.4
Carbon	4	39	139	978	2769	80865	3.6	581.8	1.7
Emery	6	59	125	1174	1692	37429	2.1	299.4	3.3
Garfield	9	88	247	2084	4148	85159	2.8	344.8	2.9
Grand	2	20	98	235	597	6007	4.9	61.3	16.3
Kane	7	68	240	1810	3629	101937	3.5	424.7	2.4
San Juan	6	59	226	1252	2328	35707	3.8	158.0	6.3
Washington	7	68	213	1057	2866	43905	3.1	206.1	4.9
Wayne	1	10	63	147	871	13060	6.3	207.3	4.8
Colorado Plateau totals	42	411	1351	8737	18900	404069	3.3	299.1	3.3
Unknown	0	—	2	—	—	—	—	—	—
Statewide totals	104	1017	3037	18706	43034	877870	3.0	289.1	3.5

\*Harvest numbers were obtained when bobcat pelts were affixed with permanent possession tags; as such, total harvest numbers are not projections.

\*\*Statewide totals for sample size and trappers afield are not totals of the columns because trappers trapped multiple counties.

Bobcat trapping harvest statistics by county and management unit, Utah 2008.

County	n	Trappers afield	Trapping harvest*	Traps set	Trapping days	Set-days	Bobcats / trapper	Set-days / bobcat	Bobcats / 1000 set-days
Beaver	10	55	81	1249	3086	92021	1.5	1136.1	0.9
Box Elder	14	76	156	1581	3211	72268	2.1	463.3	2.2
Iron	14	76	134	1112	2966	51177	1.8	381.9	2.6
Juab	7	38	72	883	671	28372	1.9	394.1	2.5
Millard	5	27	75	914	981	44401	2.8	592.0	1.7
Tooele	12	65	71	965	2552	38011	1.1	535.4	1.9
Great Basin totals	62	337	589	6704	13467	326250	1.7	553.9	1.8
Cache	2	11	11	294	289	7393	1.0	672.1	1.5
Davis	3	16	6	354	698	12834	0.4	2139.0	0.5
Morgan	3	16	18	273	425	10615	1.1	589.7	1.7
Piute	2	11	52	71	267	2235	4.7	43.0	23.3
Rich	2	11	7	153	436	7415	0.6	1059.3	0.9
Salt Lake	2	11	9	55	491	2617	0.8	290.8	3.4
Sanpete	4	22	43	562	414	6706	2.0	156.0	6.4
Sevier	13	71	112	990	2688	45041	1.6	402.2	2.5
Summit	3	16	16	221	409	5545	1.0	346.6	2.9
Utah	8	44	30	453	1614	18287	0.7	609.6	1.6
Wasatch	0	—	10	—	—	—	—	—	—
Weber	2	11	12	136	289	4116	1.1	343.0	2.9
Rocky Mountain totals	44	240	326	3562	8020	122804	1.4	376.7	2.7
Daggett	0	—	25	—	—	—	—	—	—
Duchesne	10	55	79	867	2753	41898	1.4	530.4	1.9
Uintah	8	44	112	480	1063	14115	2.5	126.0	7.9
Uintah Basin totals	18	99	216	1347	3816	56013	2.2	259.3	3.9
Carbon	3	16	68	474	812	29102	4.3	428.0	2.3
Emery	6	33	69	709	1232	24921	2.1	361.2	2.8
Garfield	14	76	199	1336	3686	63744	2.6	320.3	3.1
Grand	1	5	28	218	164	6542	5.6	233.6	4.3
Kane	10	55	187	903	2164	37457	3.4	200.3	5.0
San Juan	11	60	159	998	2006	36674	2.7	230.7	4.3
Washington	18	98	189	1830	4231	96729	1.9	511.8	2.0
Wayne	8	44	57	551	1477	21530	1.3	377.7	2.6
Colorado Plateau totals	71	387	956	7019	15772	316699	2.5	331.3	3.0
Unknown	4	22	4	425	551	14753	0.2	3688.3	0.3
Statewide totals	172	985	2091	19057	41626	836519	2.1	400.1	2.5

\*Harvest numbers were obtained when bobcat pelts were affixed with permanent possession tags; as such, total harvest numbers are not projections.

\*\*Statewide totals for sample size and trappers afield are not totals of the columns because trappers trapped multiple counties.

Bobcat non-trapping harvest statistics by county and management unit, Utah 2007.

County	n	Hunters afield	Non-trap harvest*	Hunter-days afield	Bobcats / hunter	Hunter-days / bobcat
Beaver	1	10	17	871	1.7	51.2
Box Elder	7	68	13	1340	0.2	103.1
Iron	0	—	11	—	—	—
Juab	3	29	75	117	2.6	1.6
Millard	2	20	18	147	0.9	8.2
Tooele	7	68	5	518	0.1	103.6
Great Basin totals	20	195	139	2993	0.7	21.5
Cache	2	20	0	968	0.0	—
Davis	0	—	0	—	—	—
Morgan	1	10	10	10	1.0	1.0
Piute	0	—	0	—	—	—
Rich	1	10	1	147	0.1	147.0
Salt Lake	0	—	2	—	—	—
Sanpete	4	39	15	274	0.4	18.3
Sevier	1	10	7	49	0.7	7.0
Summit	0	—	2	—	—	—
Utah	5	49	31	528	0.6	17.0
Wasatch	2	20	27	254	1.4	9.4
Weber	0	—	2	—	—	—
Rocky Mountain totals	16	158	97	2230	0.6	23.0
Daggett	1	10	2	49	0.2	24.5
Duchesne	4	39	8	1399	0.2	174.9
Uintah	8	78	26	1585	0.3	61.0
Uintah Basin totals	13	127	36	3033	0.3	84.3
Carbon	0	—	7	—	—	—
Emery	2	20	6	1076	0.3	179.3
Garfield	2	20	16	880	0.8	55.0
Grand	0	—	1	—	—	—
Kane	0	—	6	—	—	—
San Juan	1	10	27	147	2.7	5.4
Washington	0	—	4	—	—	—
Wayne	1	10	0	49	0.0	—
Colorado Plateau totals	6	60	67	2152	1.1	32.1
Unknown	0	—	1	—	—	—
Statewide totals	45	440	340	10408	0.8	30.6

\*Harvest numbers were obtained when bobcat pelts were affixed with permanent possession tags; as such, total harvest numbers are not projections.

\*\*Statewide totals for sample size and hunters afield are not totals of the columns because hunters hunted multiple counties.

Bobcat non-trapping harvest statistics by county and management unit, Utah 2008.

County	n	Hunters afield	Non-trap harvest*	Hunter-days afield	Bobcats / hunter	Hunter-days / bobcat
Beaver	4	22	14	234	0.6	16.7
Box Elder	14	76	37	1073	0.5	29.0
Iron	6	33	12	248	0.4	20.7
Juab	8	44	38	425	0.9	11.2
Millard	8	44	7	300	0.2	42.9
Tooele	17	93	17	1172	0.2	68.9
Great Basin totals	57	312	125	3452	0.4	27.6
Cache	2	11	8	174	0.7	21.8
Davis	2	11	2	191	0.2	95.5
Morgan	5	27	14	224	0.5	16.0
Piute	0	—	1	—	—	—
Rich	2	11	1	174	0.1	174.0
Salt Lake	1	5	1	55	0.2	55.0
Sanpete	6	33	1	164	0.0	164.0
Sevier	3	16	9	207	0.6	23.0
Summit	2	11	11	76	1.0	6.9
Utah	17	93	18	1456	0.2	80.9
Wasatch	6	33	23	297	0.7	12.9
Weber	5	27	5	278	0.2	55.6
Rocky Mountain totals	51	278	94	3296	0.3	35.1
Daggett	2	11	1	125	0.1	125.0
Duchesne	6	33	2	169	0.1	84.5
Uintah	9	49	17	474	0.3	27.9
Uintah Basin totals	17	93	20	768	0.2	38.4
Carbon	2	11	9	174	0.8	19.3
Emery	6	33	6	469	0.2	78.2
Garfield	6	33	18	327	0.5	18.2
Grand	2	11	2	82	0.2	41.0
Kane	0	—	9	—	—	—
San Juan	4	22	10	120	0.5	12.0
Washington	6	33	12	1069	0.4	89.1
Wayne	2	11	1	158	0.1	158.0
Colorado Plateau totals	28	154	67	2399	0.4	35.8
Unknown	5	27	40	174	1.5	4.4
Statewide totals	108	557	346	10089	0.6	29.2

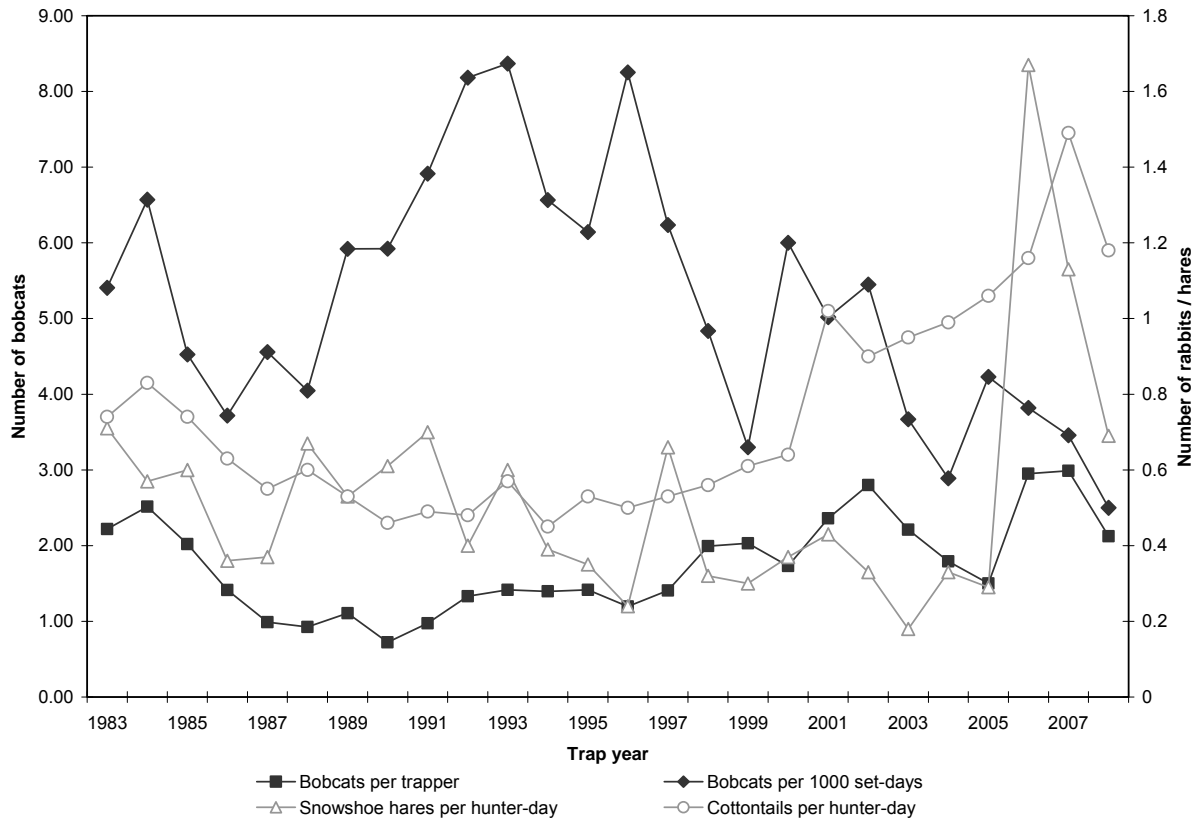
\*Harvest numbers were obtained when bobcat pelts were affixed with permanent possession tags; as such, total harvest numbers are not projections.

\*\*Statewide totals for sample size and hunters afield are not totals of the columns because hunters hunted multiple counties.

## Prey index

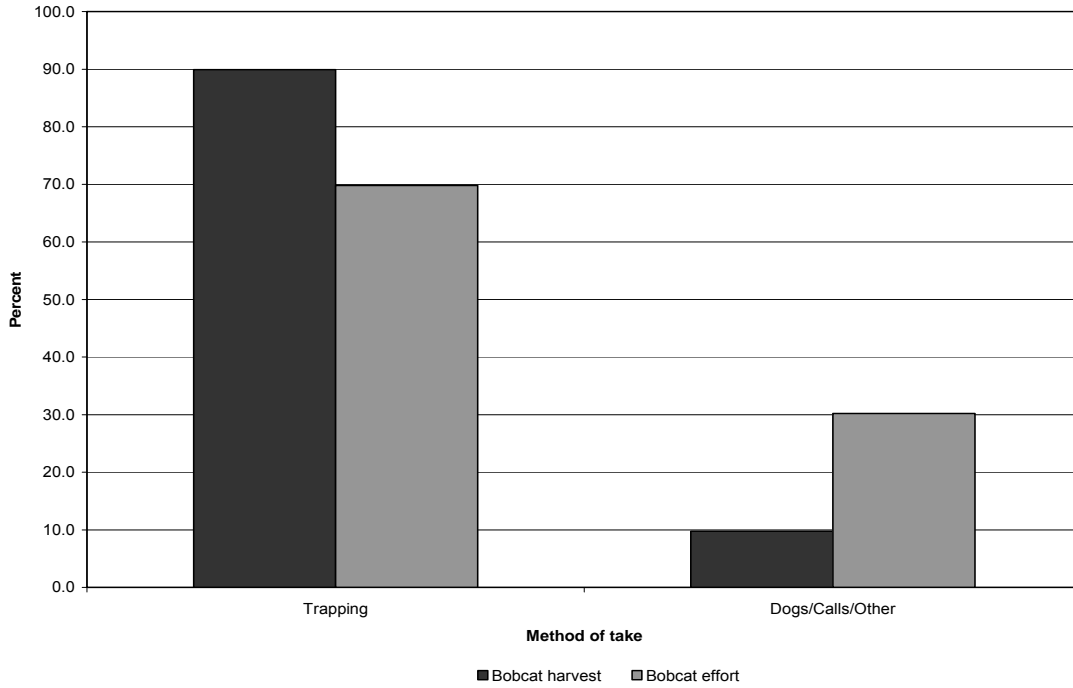
Lagomorph densities are generally considered to be a good indicator of bobcat recruitment and survival because high lagomorph populations provide an essential prey base for dispersing bobcats. When lagomorph populations are high or increasing, the bobcat population has also increased or at least remained stable. Thus, low populations of lagomorphs will reduce the likelihood of younger bobcats surviving to the next year. Cottontail rabbit and snowshoe hare data are taken from the Utah Upland Game Annual Report 2007.

Relationships in harvest statistics between bobcat and prey, Utah 1983–2008.

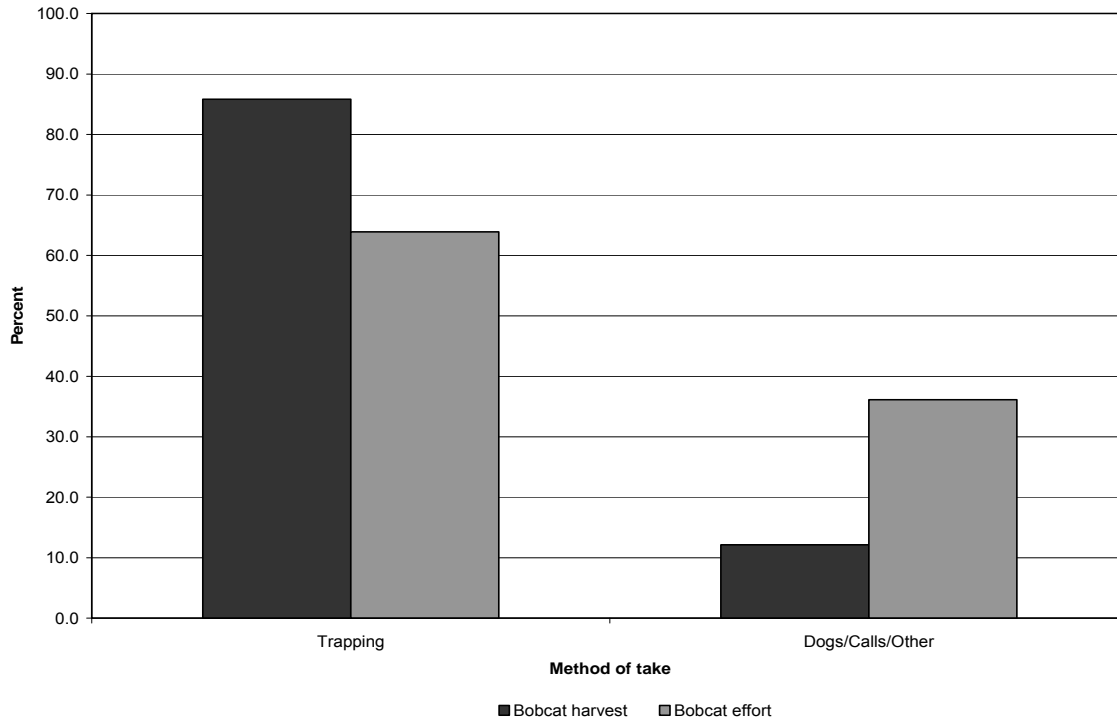


## Method of Take

Comparison of bobcat harvest and effort by method, Utah 2007.



Comparison of bobcat harvest and effort by method, Utah 2008.



## Population trends

Bobcat harvest age and sex ratios, Utah 1986–2008.

Trap year	Kittens / adult female	Kittens / adult	Male kittens / female kittens	Juveniles / adult	Juv. males / juv. females	Proportion juveniles in harvest	Proportion females in harvest	Males / females
1985–1986	0.48	0.21	0.95	—	—	—	—	1.20
1986–1987	0.67	0.30	0.92	—	—	—	—	1.09
1987–1988	1.18	0.53	0.97	—	—	—	—	1.11
1988–1989	1.09	0.44	1.05	—	—	—	—	1.32
1989–1990	0.76	0.32	1.00	—	—	—	—	1.39
1990–1991	0.82	0.33	0.62	—	—	—	—	1.23
1991–1992	0.86	0.69	1.25	—	—	—	—	1.47
1992–1993	0.91	1.00	1.21	—	—	—	—	1.37
1993–1994	1.58	0.61	0.98	—	—	—	—	1.32
1994–1995	0.62	0.57	1.14	0.57	1.14	0.36	0.44	1.34
1995–1996	1.36	0.54	0.72	0.54	0.97	0.35	0.44	1.30
1996–1997	1.86	0.67	1.10	0.68	1.12	0.41	0.41	1.40
1997–1998	1.15	0.44	0.94	0.44	0.94	0.30	0.42	1.38
1998–1999	2.06	0.82	1.13	—	—	—	—	1.30
1999–2000	0.82	0.30	1.01	1.02	1.36	0.50	0.39	1.55
2000–2001	0.69	0.26	1.12	0.89	1.32	0.47	0.39	1.56
2001–2002	0.40	0.16	0.96	0.61	1.19	0.38	0.41	1.44
2002–2003	0.37	0.16	0.88	0.39	0.97	0.28	0.45	1.24
2003–2004	0.63	0.29	0.85	0.46	0.95	0.31	0.47	1.10
2004–2005	0.80	0.32	0.83	1.22	1.13	0.55	0.44	1.28
2005–2006	5.85	2.54	1.37	2.54	1.37	0.72	0.43	1.36
2006–2007	4.10	1.48	1.43	1.48	1.43	0.60	0.43	1.32
2007–2008	3.00	1.31	1.06	1.38	1.06	0.56	0.43	1.31
Average	1.39	0.62	1.02	0.94	1.15	0.45	0.43	1.32

\*In annual reports prior to 2005-2006, the "juvenile" age category referred only to kittens (age 0.5) while "adults" included all bobcats age 1.5 and older. Beginning with the 2005-2006 annual report, the term "juvenile" now refers to kittens and yearlings (ages 0.5-1.5), while "adult" includes all bobcats age 2.5 and older.



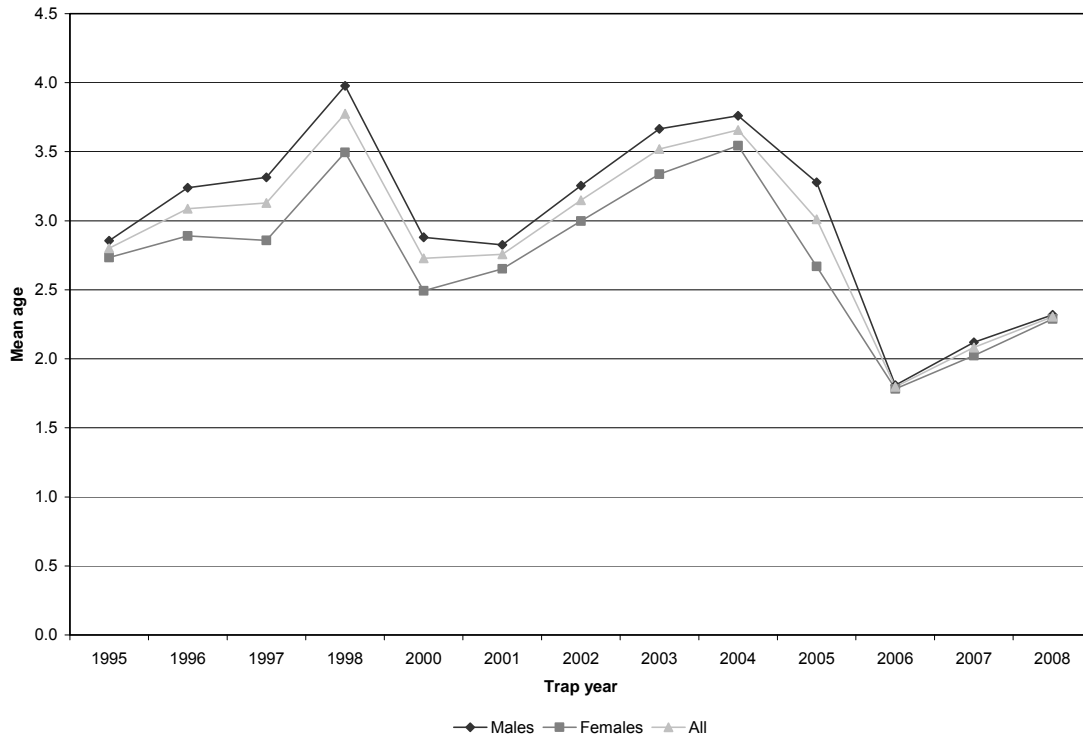
Adult and juvenile bobcat survival (from Chapman-Robson estimator), Utah 1986–2008.

Trap year	Adult survival			Juvenile* survival		
	S (%)	95% CI	Chi-square	S (%)	95% CI	Chi-square
1985–1986	63	60–65	—	42	40–45	—
1986–1987	63	60–65	—	35	32–39	—
1987–1988	65	61–68	—	35	32–38	—
1988–1989	64	60–68	—	38	35–40	—
1989–1990	67	63–71	—	41	38–44	—
1990–1991	58	53–62	—	36	31–41	—
1991–1992	58	55–60	—	32	29–36	—
1992–1993	59	56–63	—	29	25–33	—
1993–1994	54	52–57	—	40	36–43	—
1994–1995	57	54–59	—	34	30–37	—
1995–1996	64	61–66	—	30	25–34	—
1996–1997	68	65–70	—	34	30–38	—
1997–1998	71	69–74	17.3, 10df	34	28–40	62.6, 2df
1998–1999	71	70–73	29.5, 12df	29	26–33	110.2, 2df
1999–2000	66	64–68	71.4, 12df	35	33–38	445.6, 2df
2000–2001	64	62–66	144.6, 12df	36	33–39	389.3, 2df
2001–2002	65	63–67	302.4, 12df	39	36–42	596.6, 2df
2002–2003	67	65–68	1988.1, 12df	39	35–42	459.5, 2df
2003–2004	71	70–72	1328.7, 12df	22	19–25	31.6, 2df
2004–2005	74	73–76	105.2, 12df	36	33–38	985.6, 2df
2005–2006	68	65–70	33.6, 12df	16	14–18	3223.7, 2df
2006–2007	53	48–58	126.3, 12df	35	30–39	195.3, 2df
2007–2008	58	54–62	77.9, 12df	39	35–43	320.1, 2df
Average	64	—	—	34	—	—

\*"Juvenile" includes all kittens and yearlings (ages 0.5–1.5).

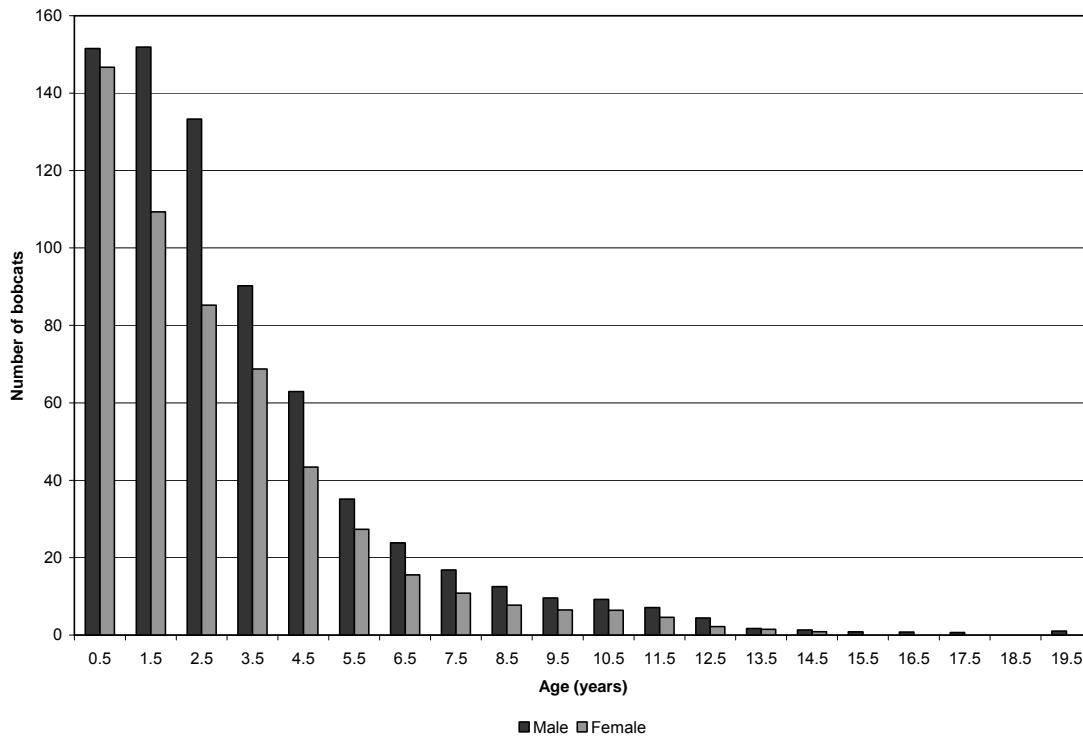
## Age structure

Average age of harvested bobcats, Utah 1995–2008.



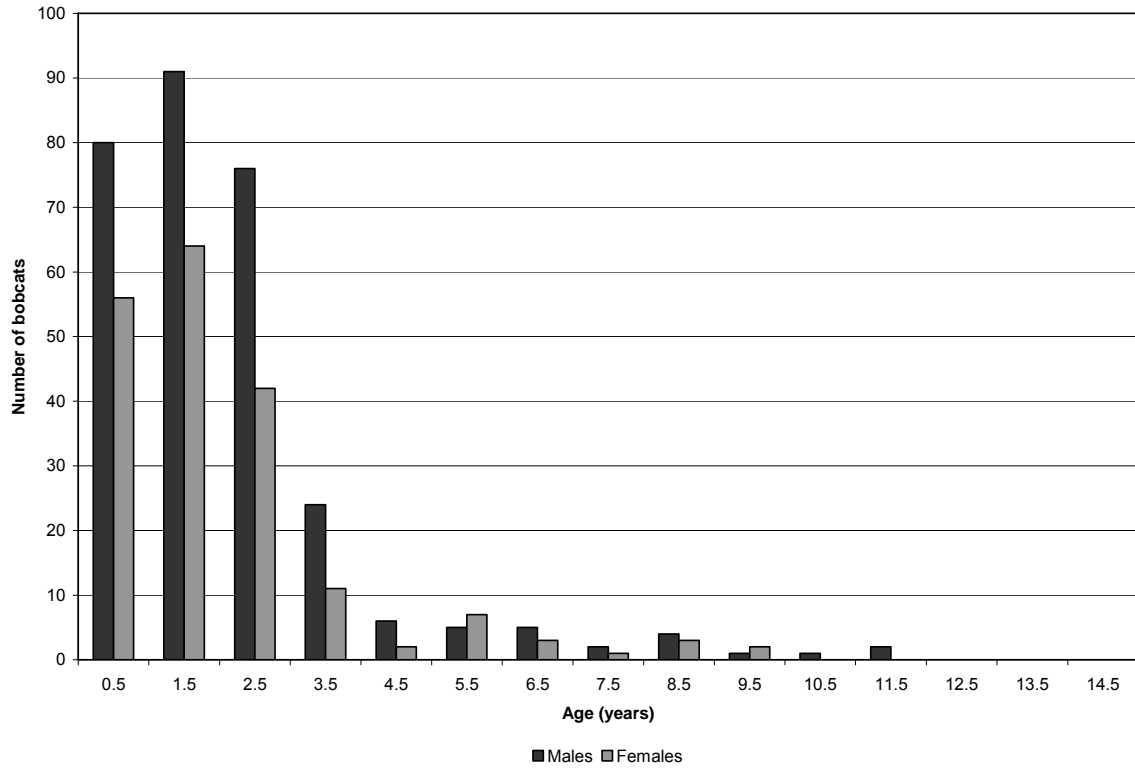
\*Excludes age structure data from the 1998–1999 trap season.

Average number of bobcats harvested by age category, Utah 1998–2008.

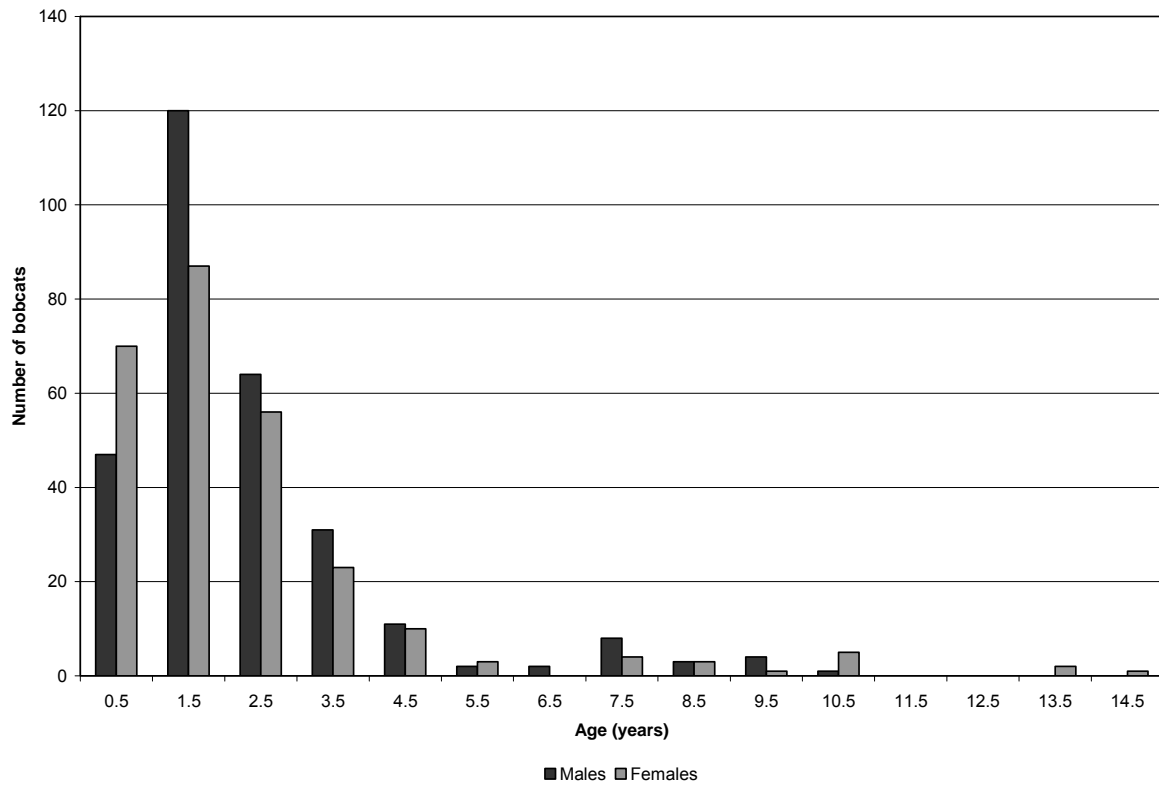


\*Excludes age structure data from the 1998–1999 trap season.

Age structure of harvested bobcats, Utah 2007.



Age structure of harvested bobcats, Utah 2008.



# COYOTE

Statewide coyote harvest statistics, Utah 1983–2008.

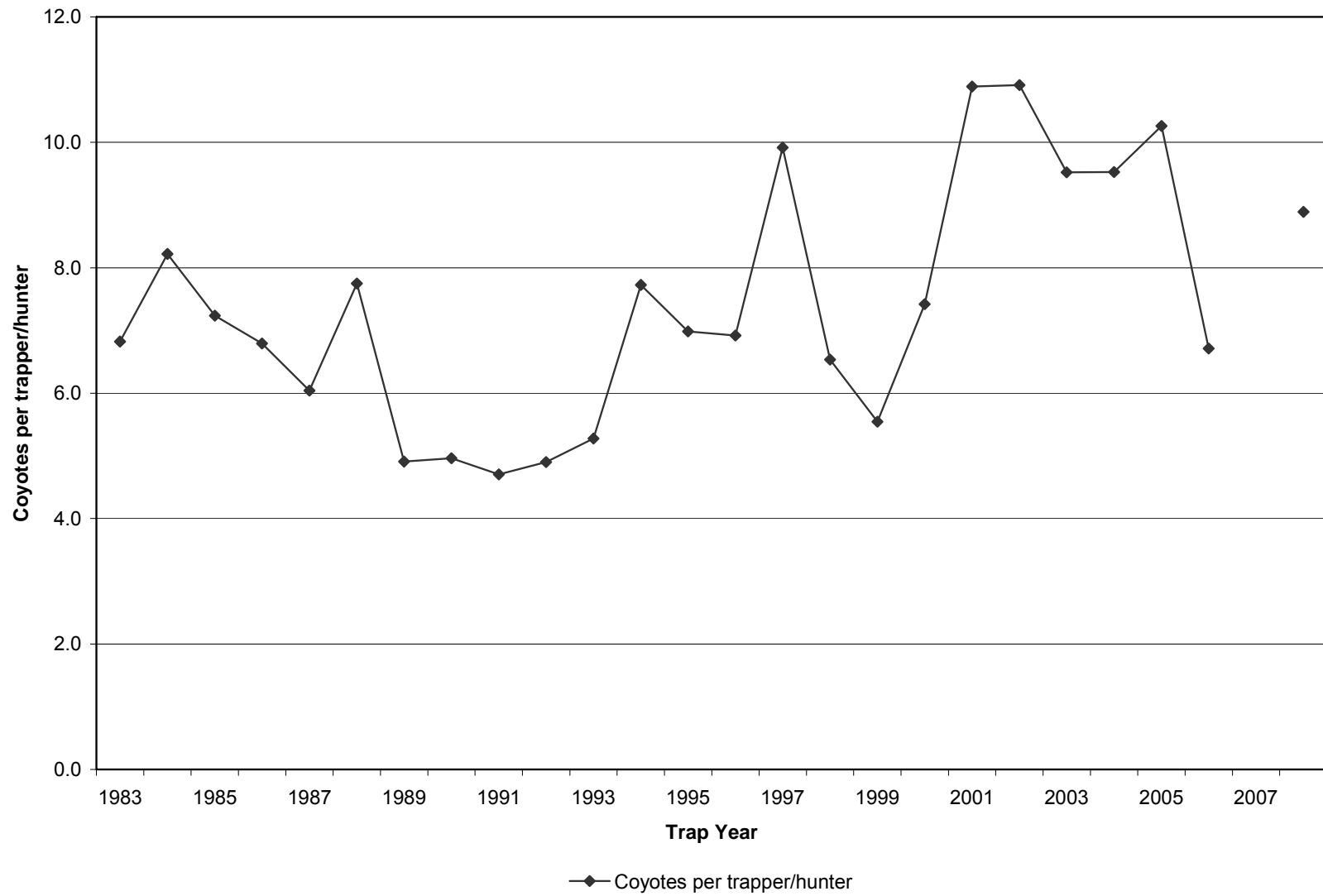
Trap year	Hunters / trappers afield	Harvest				Coyotes per hunter / trapper	Pelt price (\$)
		Wildlife Services	Trapping	Non-trap	Total		
1982–1983	841	4130	5738	—	9868	6.8	35.42
1983–1984	715	5063	5878	—	10941	8.2	25.92
1984–1985	828	5427	5991	—	11418	7.2	32.35
1985–1986	714	5045	4851	—	9896	6.8	19.65
1986–1987	819	4116	4947	—	9063	6.0	33.64
1987–1988	893	4338	6919	—	11257	7.7	15.55
1988–1989	652	4853	3200	—	8053	4.9	8.47
1989–1990	671	5168	3331	—	8499	5.0	8.68
1990–1991	389	4444	1831	—	6275	4.7	11.41
1991–1992	664	4347	3255	—	7602	4.9	20.00
1992–1993	695	4932	3666	—	8598	5.3	15.75
1993–1994	679	5827	5247	—	11074	7.7	24.58
1994–1995	754	3893	5267	—	9160	7.0	12.51
1995–1996	632	4165	4372	—	8537	6.9	15.49
1996–1997	405	4484	4017	—	8501	9.9	18.73
1997–1998	494	4169	3228	—	7397	6.5	10.80
1998–1999	782	3464	4337	—	7801	5.5	10.80
1999–2000	473	4534	3510	—	8044	7.4	19.14
2000–2001	456	4275	4966	—	9241	10.9	14.39
2001–2002	399	3874	4354	—	8228	10.9	16.17
2002–2003	572	3394	5446	—	8840	9.5	32.62
2003–2004	699	3897	6660	—	10557	9.5	25.74
2004–2005	699	4125	7173	—	11298	10.3	20.10
2005–2006	630	4820	1190	3039	9049	6.7	30.45
2006–2007	830	4888	—	—	—	—	26.37
2007–2008	859	5325***	4055	3582	12962	8.9	21.74
Average	663	4500	4537	3311	9286	6.4	20.25

\*Prior to the 2005–2006 season, harvest by hunting and trapping was not collected separately. As such, trapping harvest estimates include all harvest by hunters and trappers.

\*\*Hunters/trappers afield and coyotes per hunter/trapper do not include Wildlife Services data.

\*\*\*Harvest as of August 2008 - final WS harvest report goes through September 30, 2008.

Statewide coyote harvest trends, Utah 1983–2008.



Coyote trapping harvest statistics by county and management unit, Utah 2008.

County	n	Trappers afield	Trapping harvest	Traps set	Trapping days	Set-days	Coyotes / trapper	Set-days / coyote	Coyotes / 1000 set-days
Beaver	5	19	139	303	1283	23408	7.3	168.4	5.9
Box Elder	9	35	263	595	1564	26709	7.5	101.6	9.8
Iron	6	23	325	584	1128	28231	14.1	86.9	11.5
Juab	4	15	70	163	375	6079	4.7	86.8	11.5
Millard	3	12	139	310	658	22058	11.6	158.7	6.3
Tooele	13	50	282	648	1440	21053	5.6	74.7	13.4
Great Basin totals	40	154	1218	2603	6448	127538	7.9	104.7	9.6
Cache	0	—	—	—	—	—	—	—	—
Davis	0	—	—	—	—	—	—	—	—
Morgan	1	4	39	155	174	6966	9.8	178.6	5.6
Piute	0	—	—	—	—	—	—	—	—
Rich	2	8	290	406	290	16834	36.3	58.0	17.2
Salt Lake	0	—	—	—	—	—	—	—	—
Sanpete	3	12	97	279	426	11439	8.1	117.9	8.5
Sevier	12	46	403	679	2332	36464	8.8	90.5	11.1
Summit	2	8	4	77	104	1347	0.5	336.8	3.0
Utah	9	35	406	493	896	13094	11.6	32.3	31.0
Wasatch	1	4	12	23	54	325	3.0	27.1	36.9
Weber	0	—	—	—	—	—	—	—	—
Rocky Mountain totals	30	117	1251	2112	4276	86469	10.7	69.1	14.5
Daggett	0	—	—	—	—	—	—	—	—
Duchesne	6	23	329	381	915	14283	14.3	43.4	23.0
Uintah	1	4	43	46	165	1976	10.8	46.0	21.8
Uintah Basin totals	7	27	372	427	1080	16259	13.8	43.7	22.9
Carbon	1	4	4	46	116	1393	1.0	348.3	2.9
Emery	5	19	238	478	1268	40830	12.5	171.6	5.8
Garfield	7	27	77	346	1496	19176	2.9	249.0	4.0
Grand	1	4	8	155	116	4644	2.0	580.5	1.7
Kane	4	15	143	267	522	10507	9.5	73.5	13.6
San Juan	7	27	253	584	1146	23214	9.4	91.8	10.9
Washington	12	46	333	667	1996	32445	7.2	97.4	10.3
Wayne	5	19	143	290	755	11029	7.5	77.1	13.0
Colorado Plateau totals	42	161	1199	2833	7415	143238	7.4	119.5	8.4
Unknown	1	4	15	67	348	6064	3.8	404.3	2.5
Statewide totals	115	457	4055	8042	19567	379568	8.9	93.6	10.7

\*Statewide totals for sample size and trappers afield are not totals of the columns because trappers trapped multiple counties.

Coyote non-trapping harvest statistics by county and management unit, Utah 2008.

County	n	Hunters afield	Non-trap harvest	Hunter-days afield	Coyotes / hunter	Hunter-days / coyote
Beaver	6	23	135	178	5.9	1.3
Box Elder	18	70	401	627	5.7	1.6
Iron	7	27	76	208	2.8	2.7
Juab	11	43	174	394	4.0	2.3
Millard	11	43	635	889	14.8	1.4
Tooele	17	66	193	584	2.9	3.0
Great Basin totals	70	272	1614	2880	5.9	1.8
Cache	5	19	52	143	2.7	2.8
Davis	2	8	43	210	5.4	4.9
Morgan	2	8	19	43	2.4	2.3
Piute	0	—	—	—	—	—
Rich	2	8	62	124	7.8	2.0
Salt Lake	0	—	—	—	—	—
Sanpete	5	19	23	81	1.2	3.5
Sevier	5	19	46	129	2.4	2.8
Summit	6	23	35	232	1.5	6.6
Utah	10	39	249	908	6.4	3.6
Wasatch	1	4	0	19	0.0	—
Weber	4	15	19	116	1.3	6.1
Rocky Mountain totals	42	162	548	2005	3.4	3.7
Daggett	4	15	271	453	18.1	1.7
Duchesne	5	19	35	112	1.8	3.2
Uintah	13	50	432	693	8.6	1.6
Uintah Basin totals	22	84	738	1258	8.8	1.7
Carbon	3	12	15	72	1.3	4.8
Emery	4	15	97	433	6.5	4.5
Garfield	7	27	93	237	3.4	2.5
Grand	5	19	43	160	2.3	3.7
Kane	3	12	89	120	7.4	1.3
San Juan	7	27	182	446	6.7	2.5
Washington	4	15	97	98	6.5	1.0
Wayne	2	8	8	93	1.0	11.6
Colorado Plateau totals	35	135	624	1659	4.6	2.7
Unknown	6	23	58	201	2.5	3.5
Statewide totals	118	469	3582	8003	7.6	2.2

\*Statewide totals for sample size and hunters afield are not totals of the columns because hunters hunted multiple counties.

# RACCOON

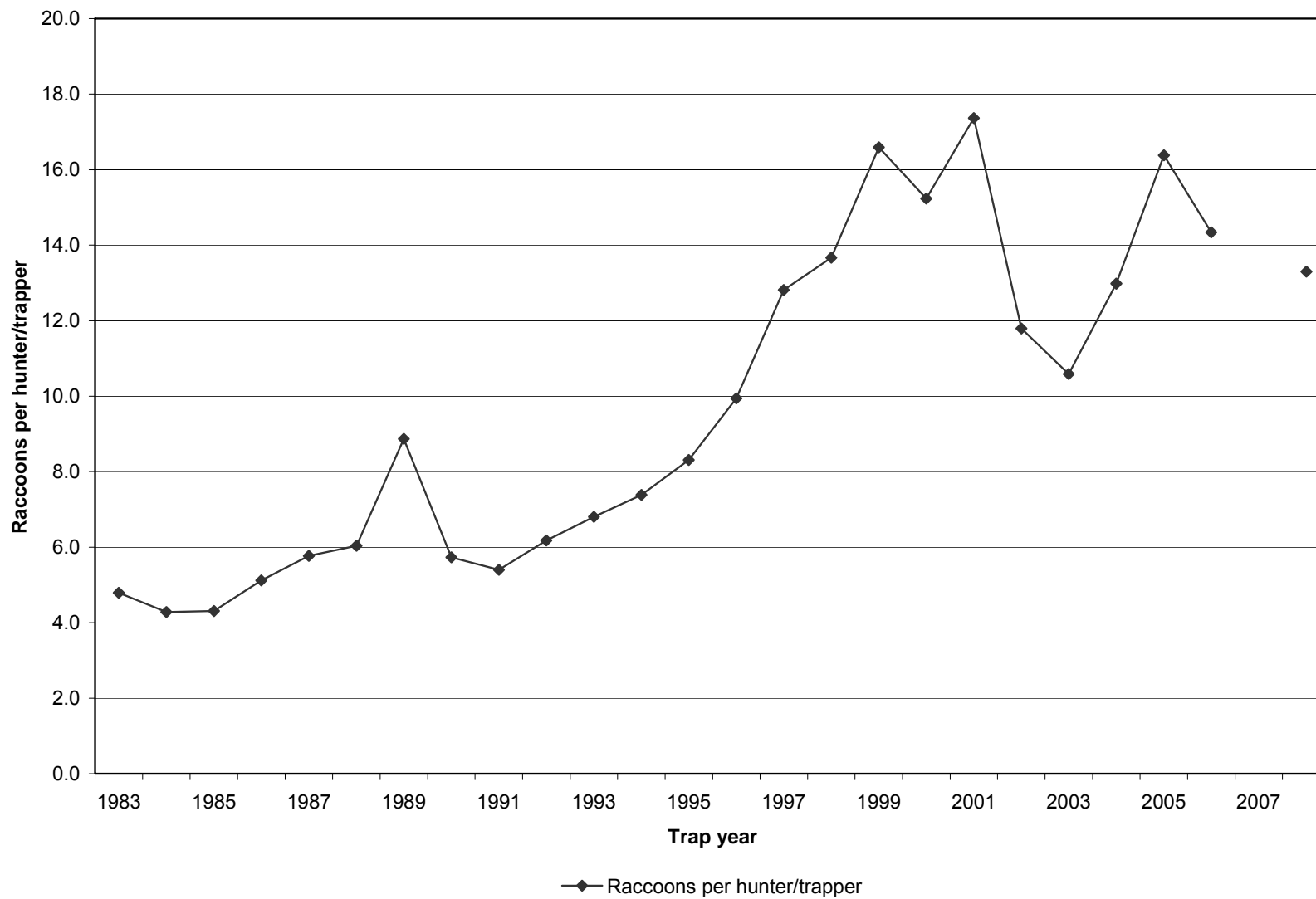
Statewide raccoon harvest statistics, Utah 1983–2008.

Trap year	Hunters / trappers afield	Harvest			Raccoons per hunter / trapper	Pelt price (\$)
		Trapping	Non-trap	Total		
1982–1983	178	853	—	853	4.8	12.34
1983–1984	192	822	—	822	4.3	13.51
1984–1985	329	1417	—	1417	4.3	12.85
1985–1986	290	1485	—	1485	5.1	9.26
1986–1987	418	2412	—	2412	5.8	12.62
1987–1988	434	2619	—	2619	6.0	9.41
1988–1989	350	3104	—	3104	8.9	7.71
1989–1990	430	2464	—	2464	5.7	5.78
1990–1991	214	1156	—	1156	5.4	4.65
1991–1992	368	2273	—	2273	6.2	4.72
1992–1993	272	1851	—	1851	6.8	2.57
1993–1994	306	2259	—	2259	7.4	6.98
1994–1995	364	3025	—	3025	8.3	6.06
1995–1996	293	2914	—	2914	9.9	8.07
1996–1997	330	4228	—	4228	12.8	13.35
1997–1998	365	4989	—	4989	13.7	9.98
1998–1999	468	7765	—	7765	16.6	4.95
1999–2000	349	5317	—	5317	15.2	5.67
2000–2001	327	5678	—	5678	17.4	5.16
2001–2002	321	3785	—	3785	11.8	8.04
2002–2003	378	4001	—	4001	10.6	5.62
2003–2004	434	5634	—	5634	13.0	10.63
2004–2005	391	6405	—	6405	16.4	6.54
2005–2006	230	1761	1537	3298	14.3	9.83
2006–2007	325	—	—	—	—	7.18
2007–2008	300	2414	1576	3990	13.3	10.85
Average	333	3225	1557	3350	4.7	8.24

\*Prior to the 2005–2006 season, harvest by hunting and trapping was not collected separately. As such, trapping harvest estimates include all harvest by hunters and trappers.



Statewide raccoon harvest trends, Utah 1983–2008.



Raccoon trapping harvest statistics by county and management unit, Utah 2008.

County	n	Trappers afield	Trapping harvest	Traps set	Trapping days	Set-days	Raccoons / trapper	Set-days / raccoon	Raccoons / 1000 set-days
Beaver	0	—	—	—	—	—	—	—	—
Box Elder	3	11	279	145	639	8736	25.4	31.3	31.9
Iron	2	8	11	62	237	2407	1.4	218.8	4.6
Juab	1	4	191	4	1378	1378	47.8	7.2	138.6
Millard	0	—	—	—	—	—	—	—	—
Tooele	2	8	73	54	536	3063	9.1	42.0	23.8
Great Basin totals	8	31	554	265	2790	15584	17.9	28.1	35.5
Cache	1	4	57	46	230	2756	14.3	48.4	20.7
Davis	1	4	153	57	191	2871	38.3	18.8	53.3
Morgan	1	4	38	31	54	429	9.5	11.3	88.6
Piute	0	—	—	—	—	—	—	—	—
Rich	0	—	—	—	—	—	—	—	—
Salt Lake	2	8	34	54	306	2603	4.3	76.6	13.1
Sanpete	6	23	188	180	421	3277	8.2	17.4	57.4
Sevier	3	11	121	115	980	13119	11.0	108.4	9.2
Summit	2	8	19	58	256	2445	2.4	128.7	7.8
Utah	11	42	502	352	2044	21094	12.0	42.0	23.8
Wasatch	1	4	4	15	54	214	1.0	53.5	18.7
Weber	2	8	100	211	402	10336	12.5	103.4	9.7
Rocky Mountain totals	30	116	1216	1119	4938	59144	10.5	48.6	20.6
Daggett	0	—	—	—	—	—	—	—	—
Duchesne	3	11	111	143	482	6259	10.1	56.4	17.7
Uintah	1	4	115	23	115	689	28.8	6.0	166.9
Uintah Basin totals	4	15	226	166	597	6948	15.1	30.7	32.5
Carbon	1	4	54	8	345	689	13.5	12.8	78.4
Emery	2	8	84	88	230	2642	10.5	31.5	31.8
Garfield	1	4	4	107	230	6431	1.0	1607.8	0.6
Grand	0	—	—	—	—	—	—	—	—
Kane	0	—	—	—	—	—	—	—	—
San Juan	0	—	—	—	—	—	—	—	—
Washington	1	4	54	43	199	2216	13.5	41.0	24.4
Wayne	2	8	31	54	256	2388	3.9	77.0	13.0
Colorado Plateau totals	7	28	227	300	1260	14366	8.1	63.3	15.8
Unknown	1	4	191	287	345	25841	47.8	135.3	7.4
Statewide totals	54	216	2414	2137	9930	121883	11.2	50.5	19.8

\*Statewide totals for sample size and trappers afield are not totals of the columns because trappers trapped multiple counties.

Raccoon non-trapping harvest statistics by county and management unit, Utah 2008.

County	n	Hunters afield	Non-trap harvest	Hunter-days afield	Raccoons / hunter	Hunter-days / raccoon
Beaver	0	—	—	—	—	—
Box Elder	0	—	—	—	—	—
Iron	0	—	—	—	—	—
Juab	2	8	27	142	3.4	5.3
Millard	0	—	—	—	—	—
Tooele	0	—	—	—	—	—
Great Basin totals	2	8	27	142	3.4	5.3
Cache	1	4	115	153	28.8	1.3
Davis	1	4	23	38	5.8	1.7
Morgan	2	8	88	123	11.0	1.4
Piute	1	4	230	115	57.5	0.5
Rich	0	—	—	—	—	—
Salt Lake	2	8	11	24	1.4	2.2
Sanpete	3	11	34	46	3.1	1.4
Sevier	1	4	65	115	16.3	1.8
Summit	0	—	—	—	—	—
Utah	6	23	440	1141	19.1	2.6
Wasatch	0	—	—	—	—	—
Weber	2	8	92	50	11.5	0.5
Rocky Mountain totals	19	74	1098	1805	14.8	1.6
Daggett	0	—	—	—	—	—
Duchesne	1	4	46	19	11.5	0.4
Uintah	2	8	161	157	20.1	1.0
Uintah Basin totals	3	12	207	176	17.3	0.9
Carbon	1	4	19	38	4.8	2.0
Emery	2	8	214	96	26.8	0.4
Garfield	0	—	—	—	—	—
Grand	0	—	—	—	—	—
Kane	0	—	—	—	—	—
San Juan	0	—	—	—	—	—
Washington	1	4	11	4	2.8	0.4
Wayne	0	—	—	—	—	—
Colorado Plateau totals	4	16	244	138	15.3	0.6
Unknown	0	—	—	—	—	—
Statewide totals	23	92	1576	2261	17.1	1.4

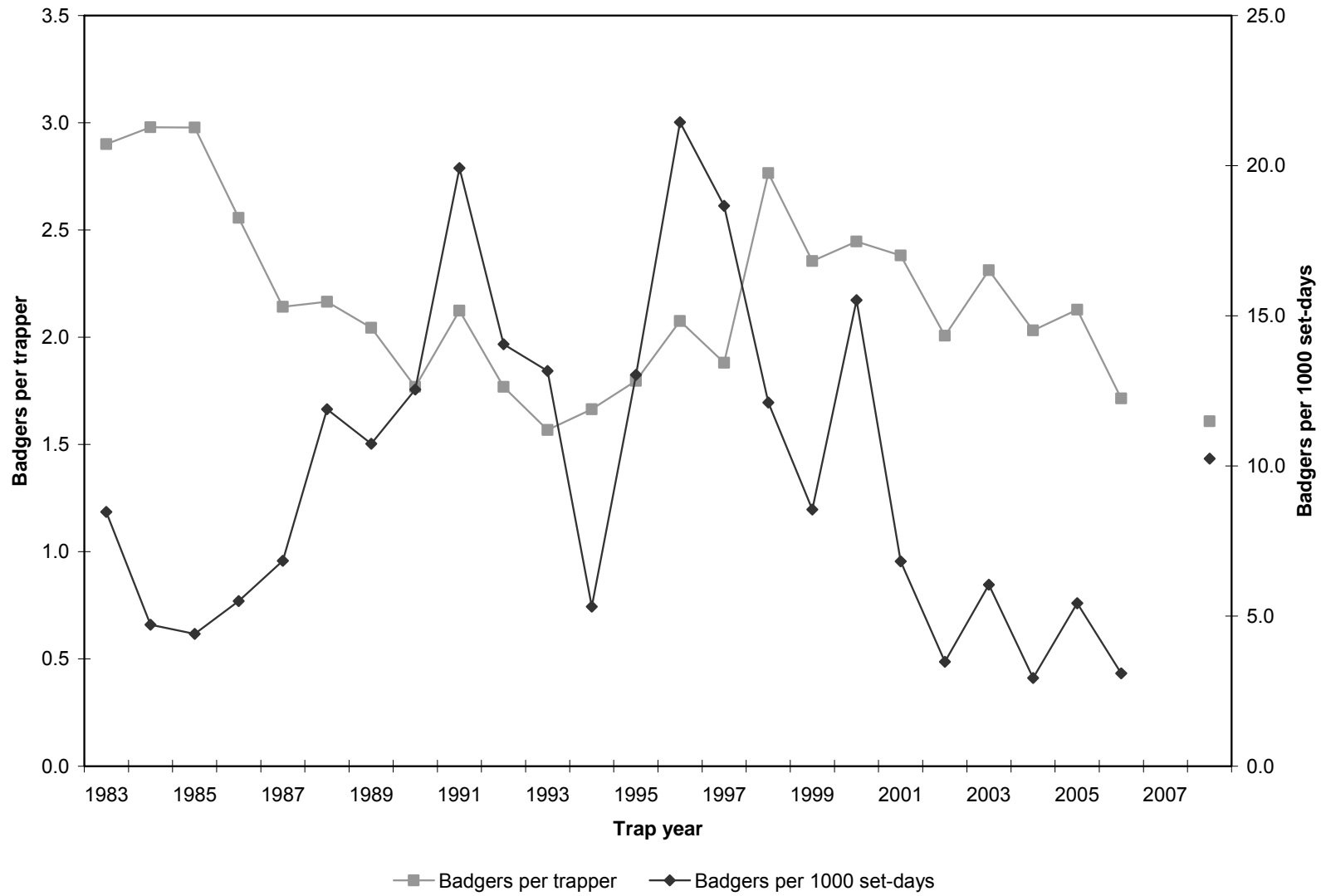
\*Statewide totals for sample size and hunters afield are not totals of the columns because hunters hunted multiple counties.

## BADGER

Statewide badger harvest statistics, Utah 1983–2008.

Trap year	Trappers afield	Harvest	Set-days	Badgers / trapper	Set-days / badger	Badgers / 1000 set-days	Pelt price (\$)
1982–1983	250	725	85622	2.9	118.1	8.5	8.20
1983–1984	188	560	118858	3.0	212.3	4.7	8.56
1984–1985	225	670	152179	3.0	227.1	4.4	10.14
1985–1986	194	496	90234	2.6	181.9	5.5	3.96
1986–1987	198	424	62035	2.1	146.3	6.8	7.64
1987–1988	212	459	38624	2.2	84.1	11.9	6.04
1988–1989	204	417	38836	2.0	93.1	10.7	4.66
1989–1990	207	366	29175	1.8	79.7	12.5	4.78
1990–1991	81	172	8636	2.1	50.2	19.9	7.27
1991–1992	134	237	16863	1.8	71.2	14.1	8.50
1992–1993	148	232	17631	1.6	76.0	13.2	9.95
1993–1994	143	238	44779	1.7	188.1	5.3	7.18
1994–1995	182	327	25082	1.8	76.7	13.0	13.93
1995–1996	133	276	12869	2.1	46.6	21.4	10.52
1996–1997	118	222	11897	1.9	53.6	18.7	13.01
1997–1998	98	271	22378	2.7	82.6	12.1	6.59
1998–1999	135	318	37220	2.4	117.0	8.5	16.96
1999–2000	177	433	27896	2.4	64.4	15.5	13.04
2000–2001	189	450	65997	2.4	146.7	6.8	17.18
2001–2002	137	275	79151	2.0	287.8	3.5	15.60
2002–2003	234	541	89476	2.3	165.4	6.0	13.73
2003–2004	223	453	154343	2.0	340.7	2.9	18.72
2004–2005	203	432	79629	2.1	184.3	5.4	13.66
2005–2006	70	120	38838	1.7	323.7	3.1	15.02
2006-2007	187	—	—	—	—	—	18.07
2007-2008	171	275	26850	1.6	97.6	10.2	14.14
Average	171	376	55004	2.2	146.5	6.8	11.04

Statewide badger harvest trends, Utah 1983–2008.



Badger harvest statistics by county and management unit, Utah 2008.

County	n	Trappers afield	Harvest	Traps set	Trapping days	Set-days	Badgers / trapper	Set-days / badger	Badgers / 1000 set-days
Beaver	2	8	16	41	454	1869	2.0	116.8	8.6
Box Elder	2	8	12	60	186	1428	1.5	119.0	8.4
Iron	4	16	35	220	451	4703	2.2	134.4	7.4
Juab	0	—	—	—	—	—	—	—	—
Millard	1	4	4	30	4	30	1.0	7.5	133.3
Tooele	7	27	113	271	729	7296	4.2	64.6	15.5
Great Basin totals	16	63	180	622	1824	15326	2.9	85.1	11.7
Cache	0	—	—	—	—	—	—	—	—
Davis	0	—	—	—	—	—	—	—	—
Morgan	0	—	—	—	—	—	—	—	—
Piute	0	—	—	—	—	—	—	—	—
Rich	0	—	—	—	—	—	—	—	—
Salt Lake	0	—	—	—	—	—	—	—	—
Sanpete	0	—	—	—	—	—	—	—	—
Sevier	1	4	4	30	109	832	1.0	208.0	4.8
Summit	0	—	—	—	—	—	—	—	—
Utah	2	8	8	34	163	887	1.0	110.9	9.0
Wasatch	2	8	8	8	66	66	1.0	8.3	121.2
Weber	0	—	—	—	—	—	—	—	—
Rocky Mountain totals	5	20	20	72	338	1785	1.0	89.3	11.2
Daggett	0	—	—	—	—	—	—	—	—
Duchesne	1	4	12	30	109	832	3.0	69.3	14.4
Uintah	3	12	16	63	229	1676	1.3	104.8	9.5
Uintah Basin totals	4	16	28	93	338	2508	1.8	89.6	11.2
Carbon	0	—	—	—	—	—	—	—	—
Emery	0	—	—	—	—	—	—	—	—
Garfield	6	23	27	202	979	6514	1.2	241.3	4.1
Grand	0	—	—	—	—	—	—	—	—
Kane	0	—	—	—	—	—	—	—	—
San Juan	0	—	—	—	—	—	—	—	—
Washington	0	—	—	—	—	—	—	—	—
Wayne	1	4	8	12	23	70	2.0	8.8	114.3
Colorado Plateau totals	7	27	35	214	1002	6584	1.3	188.1	5.3
Unknown	2	8	12	41	155	647	1.5	53.9	18.5
Statewide totals	33	171	275	1042	3657	26850	1.6	97.6	10.2

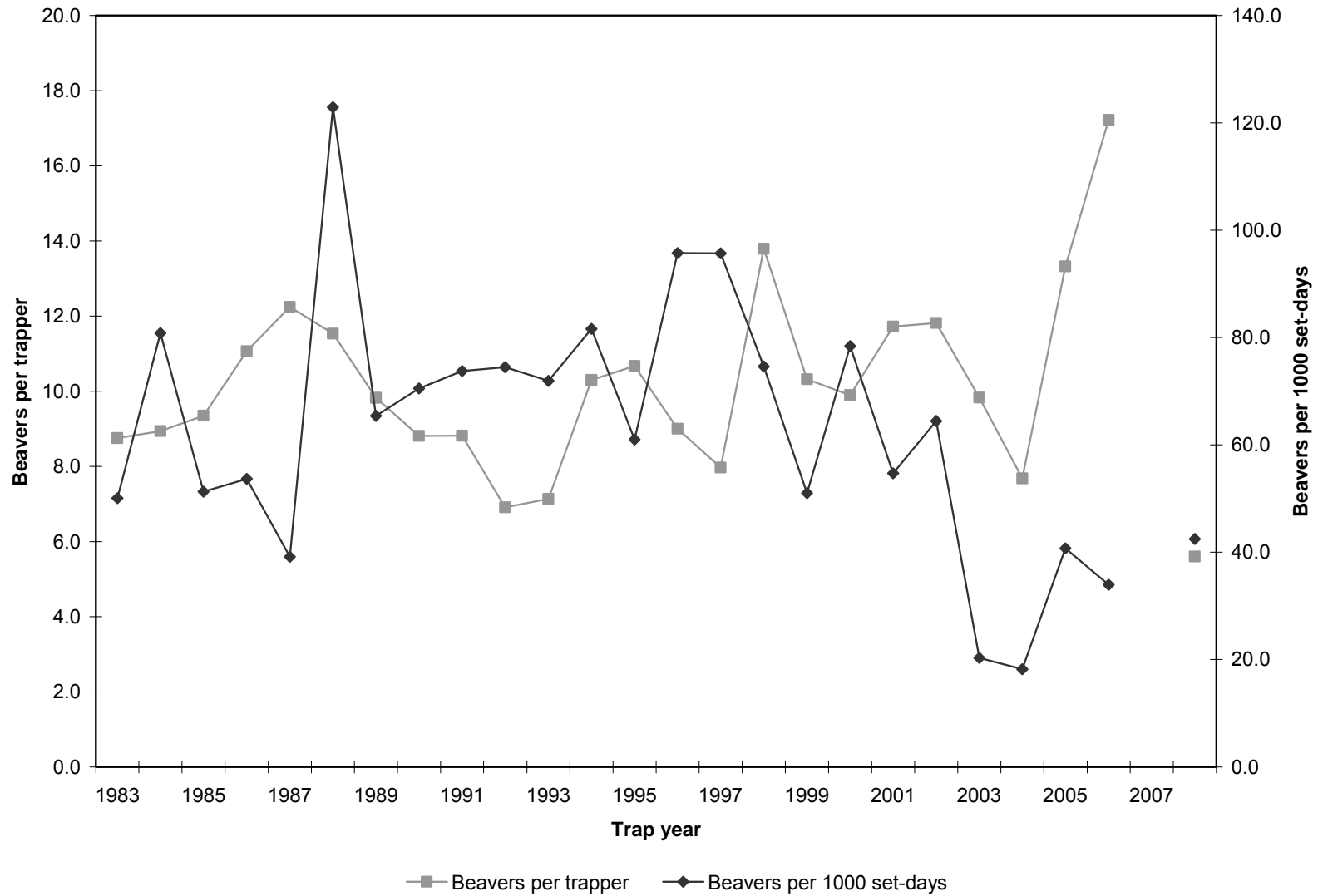
\*Statewide totals for sample size and trappers afield are not totals of the columns because trappers trapped multiple counties.

# BEAVER

Statewide beaver harvest statistics, Utah 1983–2008.

Trap year	Trappers afield	Harvest	Set-days	Beavers / trapper	Set-days / beaver	Beavers / 1000 set-days	Pelt price (\$)
1982–1983	181	1584	31632	8.8	20.0	50.1	12.89
1983–1984	200	1788	22131	8.9	12.4	80.8	14.10
1984–1985	285	2664	51960	9.3	19.5	51.3	16.44
1985–1986	293	3242	60428	11.1	18.6	53.7	14.64
1986–1987	338	4138	105661	12.2	25.5	39.2	22.64
1987–1988	409	4716	38367	11.5	8.1	122.9	14.67
1988–1989	277	2721	41616	9.8	15.3	65.4	10.02
1989–1990	390	3436	48716	8.8	14.2	70.5	11.93
1990–1991	176	1551	21029	8.8	13.6	73.8	6.49
1991–1992	216	1492	20040	6.9	13.4	74.5	8.94
1992–1993	134	956	13291	7.1	13.9	71.9	7.74
1993–1994	171	1761	21578	10.3	12.3	81.6	9.59
1994–1995	239	2551	41818	10.7	16.4	61.0	12.65
1995–1996	170	1530	15982	9.0	10.4	95.7	13.40
1996–1997	163	1299	13576	8.0	10.5	95.7	21.15
1997–1998	210	2896	38816	13.8	13.4	74.6	13.58
1998–1999	286	2950	57818	10.3	19.6	51.0	9.37
1999–2000	185	1830	23342	9.9	12.8	78.4	10.98
2000–2001	170	1992	36406	11.7	18.3	54.7	10.32
2001–2002	143	1689	26199	11.8	15.5	64.5	10.85
2002–2003	175	1720	84755	9.8	49.3	20.3	9.47
2003–2004	232	1781	97791	7.7	54.9	18.2	14.10
2004–2005	200	2664	65401	13.3	24.5	40.7	13.91
2005–2006	130	2239	66026	17.2	29.5	33.9	17.75
2006-2007	122	—	—	—	—	—	16.31
2007-2008	133	745	17545	5.6	23.6	42.5	17.50
Average	216	2237	42477	10.3	19.0	52.7	13.13

Statewide beaver harvest trends, Utah 1983–2008.





Beaver harvest statistics by county and management unit, Utah 2008.

County	n	Trappers afield	Harvest	Traps set	Trapping days	Set-days	Beavers / trapper	Set-days / beaver	Beavers / 1000 set-days
Beaver	0	—	—	—	—	—	—	—	—
Box Elder	1	4	0	26	4	26	0.0	—	0.0
Iron	0	—	—	—	—	—	—	—	—
Juab	1	4	4	11	27	80	1.0	20.0	50.0
Millard	0	—	—	—	—	—	—	—	—
Tooele	0	—	—	—	—	—	—	—	—
Great Basin totals	2	8	4	37	31	106	0.5	26.5	37.7
Cache	2	8	19	65	283	3019	2.4	158.9	6.3
Davis	1	4	11	15	19	76	2.8	6.9	144.7
Morgan	5	19	134	107	256	1582	7.1	11.8	84.7
Piute	1	4	38	15	459	1834	9.5	48.3	20.7
Rich	0	—	—	—	—	—	—	—	—
Salt Lake	3	11	61	27	390	1460	5.5	23.9	41.8
Sanpete	1	4	46	115	57	1720	11.5	37.4	26.7
Sevier	1	4	11	19	80	401	2.8	36.5	27.4
Summit	2	8	92	37	130	675	11.5	7.3	136.3
Utah	5	19	92	80	203	833	4.8	9.1	110.4
Wasatch	0	—	—	—	—	—	—	—	—
Weber	3	11	31	31	69	294	2.8	9.5	105.4
Rocky Mountain totals	24	92	535	511	1946	11894	5.8	22.2	45.0
Daggett	0	—	—	—	—	—	—	—	—
Duchesne	3	11	65	54	139	623	5.9	9.6	104.3
Uintah	2	8	107	69	31	336	13.4	3.1	318.5
Uintah Basin totals	5	19	172	123	170	959	9.1	5.6	179.4
Carbon	1	4	34	153	115	4586	8.5	134.9	7.4
Emery	0	—	—	—	—	—	—	—	—
Garfield	0	—	—	—	—	—	—	—	—
Grand	0	—	—	—	—	—	—	—	—
Kane	0	—	—	—	—	—	—	—	—
San Juan	0	—	—	—	—	—	—	—	—
Washington	0	—	—	—	—	—	—	—	—
Wayne	0	—	—	—	—	—	—	—	—
Colorado Plateau totals	1	4	34	153	115	4586	8.5	134.9	7.4
Unknown	0	—	—	—	—	—	—	—	—
Statewide totals	32	133	745	824	2262	17545	5.6	23.6	42.5

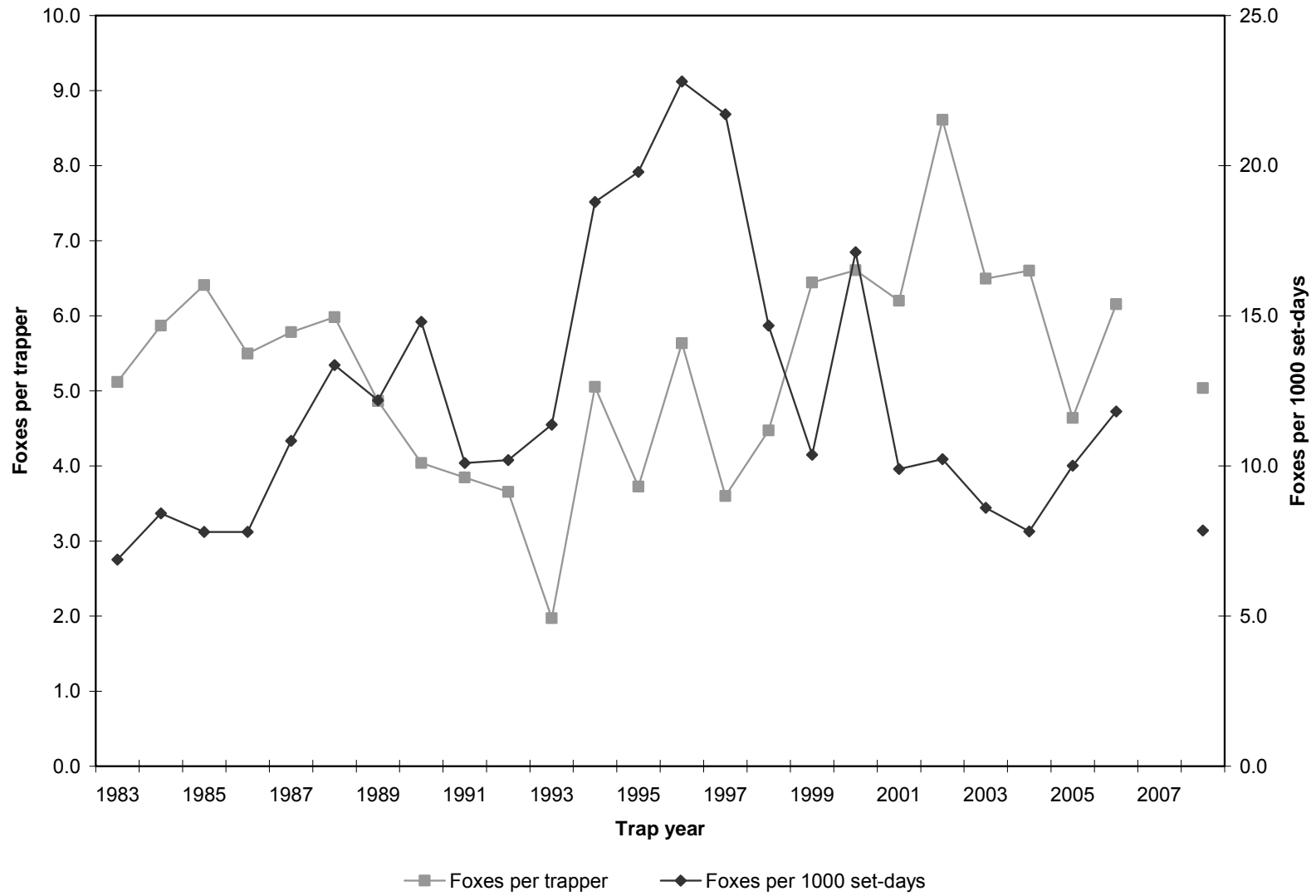
\*Statewide totals for sample size and trappers afield are not totals of the columns because trappers trapped multiple counties.

## GRAY FOX

Statewide gray fox harvest statistics, Utah 1983–2008.

Trap year	Trappers afield	Harvest	Set-days	Foxes / trapper	Set-days / fox	Foxes / 1000 set-days	Pelt price (\$)
1982–1983	263	1346	195772	5.1	145.4	6.9	27.75
1983–1984	233	1367	162394	5.9	118.8	8.4	25.13
1984–1985	305	1954	250538	6.4	128.2	7.8	24.64
1985–1986	256	1407	180454	5.5	128.3	7.8	15.03
1986–1987	252	1457	134458	5.8	92.3	10.8	25.29
1987–1988	273	1633	122271	6.0	74.9	13.4	21.91
1988–1989	226	1099	90214	4.9	82.1	12.2	13.50
1989–1990	233	941	63576	4.0	67.6	14.8	6.19
1990–1991	65	250	24768	3.8	99.1	10.1	8.24
1991–1992	110	402	39445	3.7	98.1	10.2	6.87
1992–1993	214	422	37108	2.0	87.9	11.4	7.08
1993–1994	136	687	36563	5.1	53.2	18.8	12.00
1994–1995	207	771	38957	3.7	50.5	19.8	9.62
1995–1996	147	828	36319	5.6	43.9	22.8	10.65
1996–1997	102	367	16904	3.6	46.1	21.7	11.60
1997–1998	87	389	26515	4.5	68.2	14.7	7.76
1998–1999	135	870	83913	6.4	96.5	10.4	6.96
1999–2000	140	925	54044	6.6	58.4	17.1	6.62
2000–2001	187	1159	117117	6.2	101.1	9.9	8.00
2001–2002	154	1326	129687	8.6	97.8	10.2	11.58
2002–2003	299	1942	225810	6.5	116.3	8.6	12.47
2003–2004	265	1749	223814	6.6	128.0	7.8	10.84
2004–2005	203	942	94102	4.6	99.9	10.0	13.81
2005–2006	98	603	51051	6.2	84.7	11.8	24.15
2006-2007	252	—	—	—	—	—	37.25
2007-2008	217	1093	139231	5.0	127.4	7.9	39.19
Average	195	1037	103001	5.3	99.3	10.1	15.54

Statewide gray fox harvest trends, Utah 1983–2008.



Gray fox harvest statistics by county and management unit, Utah 2008.

County	n	Trappers afield	Harvest	Traps set	Trapping days	Set-days	Foxes / trapper	Set-days / fox	Foxes / 1000 set-days
Beaver	3	11	73	161	926	18299	6.6	250.7	4.0
Box Elder	0	—	—	—	—	—	—	—	—
Iron	11	42	77	604	1157	17721	1.8	230.1	4.3
Juab	0	—	—	—	—	—	—	—	—
Millard	0	—	—	—	—	—	—	—	—
Tooele	0	—	—	—	—	—	—	—	—
Great Basin totals	14	53	150	765	2083	36020	2.8	240.1	4.2
Cache	0	—	—	—	—	—	—	—	—
Davis	0	—	—	—	—	—	—	—	—
Morgan	0	—	—	—	—	—	—	—	—
Piute	0	—	—	—	—	—	—	—	—
Rich	0	—	—	—	—	—	—	—	—
Salt Lake	0	—	—	—	—	—	—	—	—
Sanpete	0	—	—	—	—	—	—	—	—
Sevier	2	8	4	121	285	4493	0.5	1123.3	0.9
Summit	0	—	—	—	—	—	—	—	—
Utah	0	—	—	—	—	—	—	—	—
Wasatch	1	4	19	138	341	12266	4.8	645.6	1.5
Weber	0	—	—	—	—	—	—	—	—
Rocky Mountain totals	3	12	23	259	626	16759	1.9	728.7	1.4
Daggett	0	—	—	—	—	—	—	—	—
Duchesne	0	—	—	—	—	—	—	—	—
Uintah	1	4	19	57	46	689	4.8	36.3	27.6
Uintah Basin totals	1	4	19	57	46	689	4.8	36.3	27.6
Carbon	0	—	—	—	—	—	—	—	—
Emery	1	4	21	60	143	2246	5.3	107.0	9.3
Garfield	6	23	119	387	1139	18793	5.2	157.9	6.3
Grand	2	8	46	172	230	5168	5.8	112.3	8.9
Kane	5	19	145	245	306	3599	7.6	24.8	40.3
San Juan	10	38	276	683	1380	24595	7.3	89.1	11.2
Washington	10	38	264	586	1489	25814	6.9	97.8	10.2
Wayne	3	11	15	144	315	4400	1.4	293.3	3.4
Colorado Plateau totals	37	141	886	2277	5002	84615	6.3	95.5	10.5
Unknown	1	4	15	19	230	1148	3.8	76.5	13.1
Statewide totals	53	217	1093	3377	7987	139231	5.0	127.4	7.9

\*Statewide totals for sample size and trappers afield are not totals of the columns because trappers trapped multiple counties.

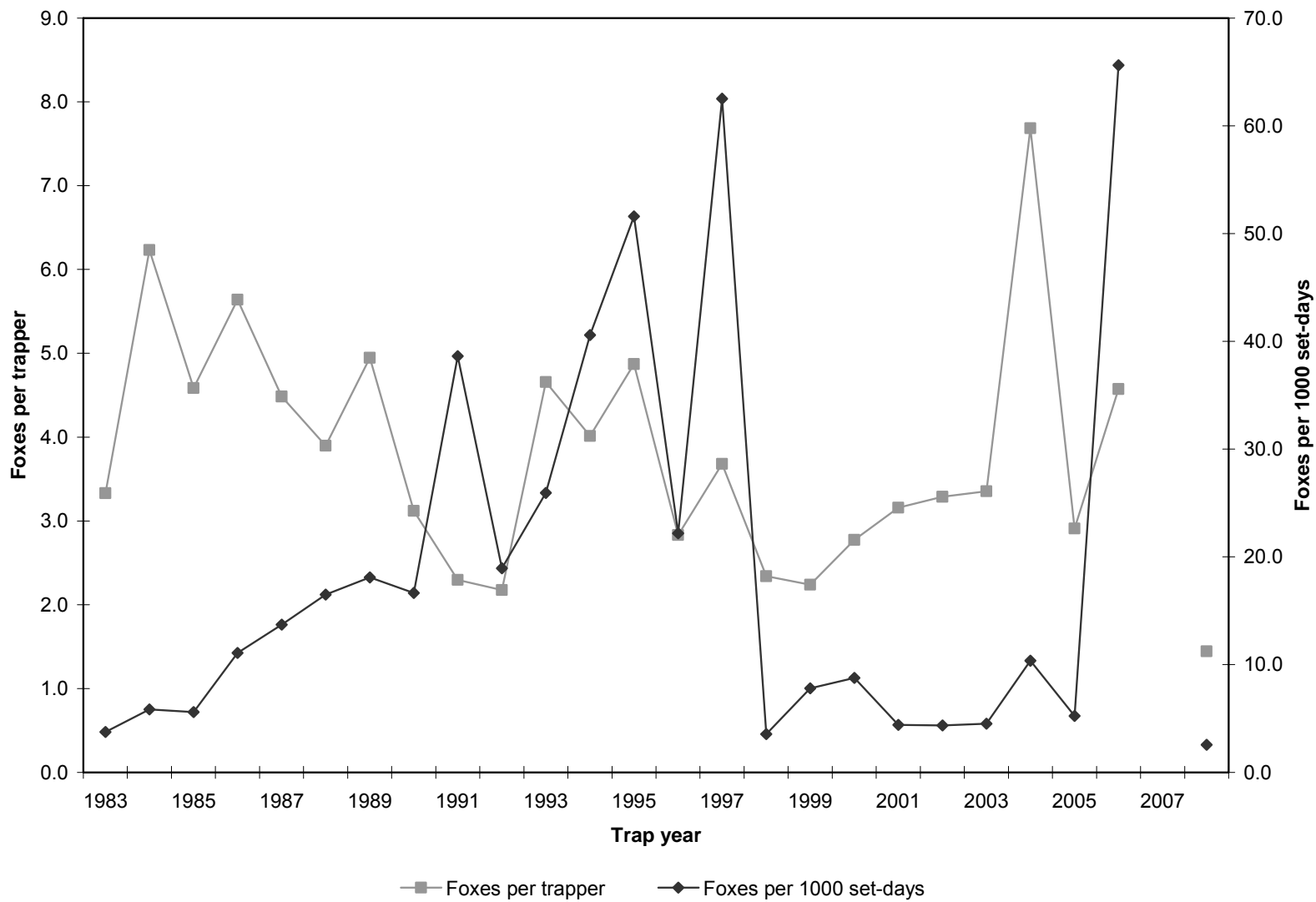
## KIT FOX

Statewide kit fox harvest statistics, Utah 1983–2008.

Trap year	Trappers afield	Harvest	Set-days	Foxes / trapper	Set-days / fox	Foxes / 1000 set-days	Pelt price (\$)
1982–1983	109	363	96880	3.3	266.9	3.7	11.39
1983–1984	112	698	119504	6.2	171.2	5.8	11.99
1984–1985	142	651	116133	4.6	178.4	5.6	11.17
1985–1986	108	609	54928	5.6	90.2	11.1	7.50
1986–1987	122	547	39872	4.5	72.9	13.7	9.90
1987–1988	138	538	32630	3.9	60.7	16.5	10.69
1988–1989	130	643	35528	4.9	55.3	18.1	6.98
1989–1990	117	365	21926	3.1	60.1	16.6	3.19
1990–1991	81	186	4815	2.3	25.9	38.6	4.67
1991–1992	86	187	9869	2.2	52.8	18.9	2.78
1992–1993	41	191	7363	4.7	38.5	25.9	4.30
1993–1994	75	301	7415	4.0	24.6	40.6	4.69
1994–1995	109	531	10292	4.9	19.4	51.6	6.45
1995–1996	77	218	9826	2.8	45.1	22.2	6.25
1996–1997	44	162	2591	3.7	16.0	62.5	6.77
1997–1998	41	96	27046	2.3	281.7	3.5	3.50
1998–1999	75	168	21557	2.2	128.3	7.8	7.31
1999–2000	66	183	20890	2.8	114.2	8.8	2.90
2000–2001	51	161	36574	3.2	227.2	4.4	6.13
2001–2002	52	171	39215	3.3	229.3	4.4	10.72
2002–2003	90	302	66826	3.4	221.3	4.5	5.44
2003–2004	83	638	61572	7.7	96.5	10.4	5.38
2004–2005	89	259	49454	2.9	190.9	5.2	8.98
2005–2006*	40	183	—	4.6	15.2	65.6	10.92
2006–2007	65	—	—	—	—	—	10.50
2007–2008	27	39	15269	1.4	391.5	2.6	7.87
Average	83	336	37832	4.0	112.7	8.9	7.25

\*Due to outliers in the data, statewide set-days could not be calculated. Set-days per fox and foxes per 1000 set-days were calculated after removing outliers.

Statewide kit fox harvest trends, Utah 1983–2008.



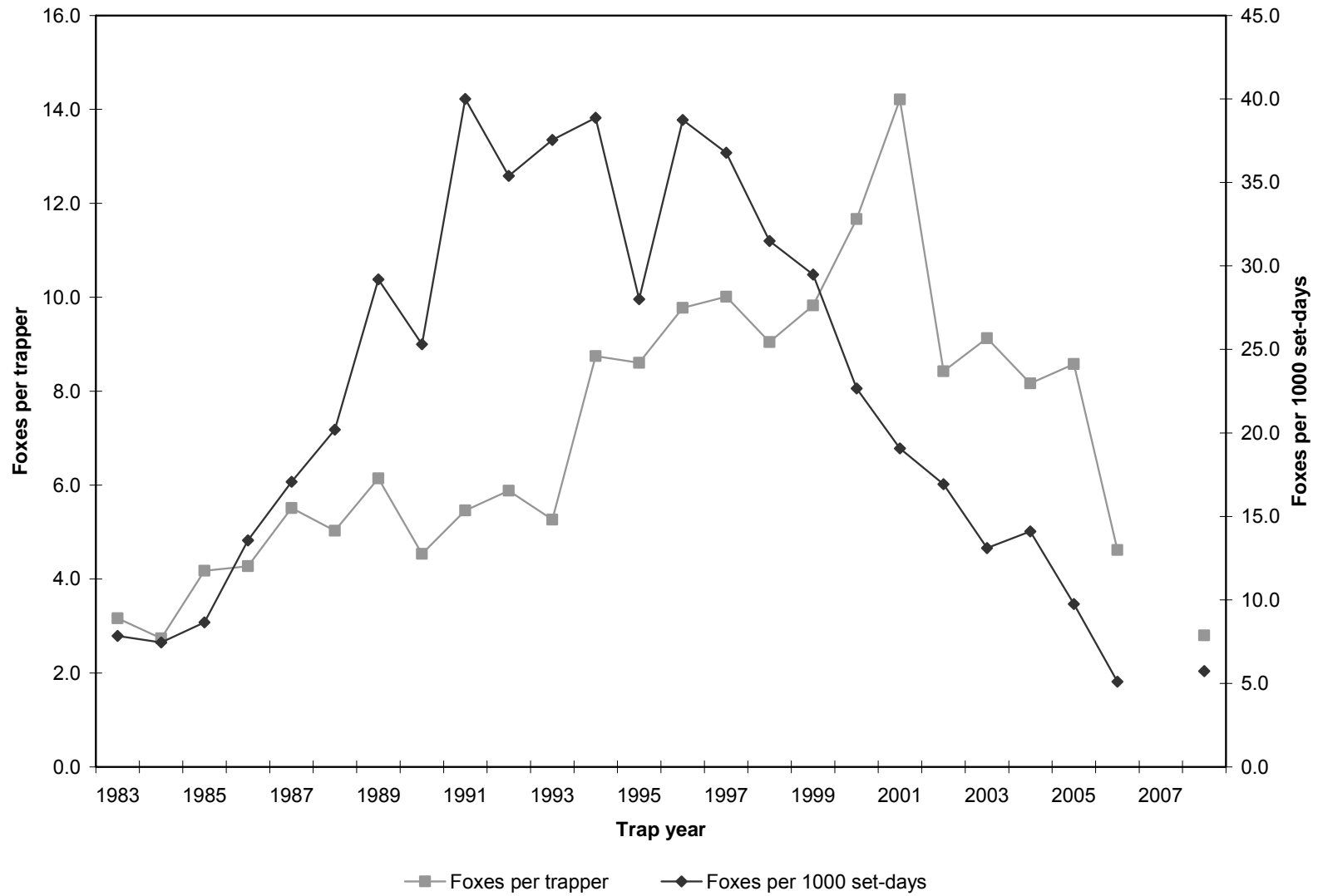
# RED FOX

Statewide red fox harvest statistics, Utah 1983–2008.

Trap year	Trappers afield	Harvest	Set-days	Foxes / trapper	Set-days / fox	Foxes / 1000 set-days	Pelt price (\$)
1982–1983	172	544	69366	3.2	127.5	7.8	30.13
1983–1984	191	523	70121	2.7	134.1	7.5	28.43
1984–1985	298	1244	143815	4.2	115.6	8.7	25.90
1985–1986	316	1351	99623	4.3	73.7	13.6	15.83
1986–1987	444	2446	143189	5.5	58.5	17.1	20.14
1987–1988	506	2545	126008	5.0	49.5	20.2	13.66
1988–1989	398	2446	83777	6.1	34.3	29.2	6.57
1989–1990	496	2250	88876	4.5	39.5	25.3	7.80
1990–1991	365	1993	49821	5.5	25.0	40.0	6.34
1991–1992	623	3663	103484	5.9	28.3	35.4	10.70
1992–1993	594	3126	83253	5.3	26.6	37.5	10.12
1993–1994	578	5055	130027	8.7	25.7	38.9	14.74
1994–1995	509	4378	156307	8.6	35.7	28.0	15.34
1995–1996	421	4115	106218	9.8	25.8	38.7	18.08
1996–1997	427	4274	116183	10.0	27.2	36.8	17.48
1997–1998	414	3744	118860	9.0	31.7	31.5	11.31
1998–1999	570	5600	189944	9.8	33.9	29.5	8.95
1999–2000	420	4900	216141	11.7	44.1	22.7	14.19
2000–2001	375	5330	279449	14.2	52.4	19.1	16.92
2001–2002	379	3192	188572	8.4	59.1	16.9	24.48
2002–2003	482	4399	335863	9.1	76.3	13.1	28.19
2003–2004	568	4639	329026	8.2	70.9	14.1	18.07
2004–2005	545	4674	479042	8.6	102.5	9.8	18.86
2005–2006*	406	1874	—	4.6	196.3	5.1	24.35
2006–2007	496	—	—	—	—	—	20.49
2007–2008	407	1130	196865	2.8	174.2	5.7	21.42
Average	438	3177	162660	7.2	51.2	19.5	17.25

\*Due to outliers in the data, statewide set-days could not be calculated. Set-days per fox and foxes per 1000 set-days were calculated after removing outliers.

Statewide red fox harvest trends, Utah 1983–2008.





Red fox harvest statistics by county and management unit, Utah 2008.

County	n	Trappers afield	Harvest	Traps set	Trapping days	Set-days	Foxes / trapper	Set-days / fox	Foxes / 1000 set-days
Beaver	1	4	4	8	82	165	1.0	41.3	24.2
Box Elder	8	31	79	344	1162	12104	2.5	153.2	6.5
Iron	7	27	94	289	711	8551	3.5	91.0	11.0
Juab	4	16	39	183	447	5775	2.4	148.1	6.8
Millard	1	4	4	78	353	7055	1.0	1763.8	0.6
Tooele	5	20	39	207	456	5020	2.0	128.7	7.8
Great Basin totals	26	102	259	1109	3211	38670	2.5	149.3	6.7
Cache	1	4	24	47	235	2822	6.0	117.6	8.5
Davis	1	4	24	59	157	2352	6.0	98.0	10.2
Morgan	1	4	24	157	176	7055	6.0	294.0	3.4
Piute	0	—	—	—	—	—	—	—	—
Rich	1	4	12	47	118	1411	3.0	117.6	8.5
Salt Lake	3	12	51	102	534	4846	4.3	95.0	10.5
Sanpete	3	12	59	263	255	8877	4.9	150.5	6.6
Sevier	8	31	131	348	1264	17137	4.2	130.8	7.6
Summit	1	4	0	59	78	1176	0.0	—	0.0
Utah	14	55	145	511	1966	25163	2.6	173.5	5.8
Wasatch	0	—	—	—	—	—	—	—	—
Weber	3	12	39	113	554	4966	3.3	127.3	7.9
Rocky Mountain totals	36	142	509	1706	5337	75805	3.6	148.9	6.7
Daggett	1	4	4	4	4	4	1.0	1.0	1000.0
Duchesne	3	12	28	140	276	3085	2.3	110.2	9.1
Uintah	4	16	47	85	409	2426	2.9	51.6	19.4
Uintah Basin totals	8	32	79	229	689	5515	2.5	69.8	14.3
Carbon	1	4	8	47	118	1411	2.0	176.4	5.7
Emery	8	31	126	492	1661	40427	4.1	320.8	3.1
Garfield	6	24	74	352	1248	15889	3.1	214.7	4.7
Grand	1	4	4	46	143	1674	1.0	418.5	2.4
Kane	0	—	—	—	—	—	—	—	—
San Juan	3	12	20	199	382	5926	1.7	296.3	3.4
Washington	2	8	12	92	285	3347	1.5	278.9	3.6
Wayne	2	8	31	85	412	4525	3.9	146.0	6.9
Colorado Plateau totals	23	91	275	1313	4249	73199	3.0	266.2	3.8
Unknown	0	—	—	—	—	—	—	—	—
Statewide totals	90	407	1130	4496	13798	196865	2.8	174.2	5.7

\*Statewide totals for sample size and trappers afield are not totals of the columns because trappers trapped multiple counties.

# MARTEN

## Statewide marten harvest statistics, Utah 1983–1999.

Trap year	Trappers afield	Harvest	Set-days	Martens / trapper	Set-days / marten	Martens / 1000 set-days	Pelt price (\$)
1982–1983	1	1	6	1.0	6.0	166.7	10.00
1983–1984	9	84	4704	9.5	56.0	17.9	20.00
1984–1985	9	12	6516	1.4	543.0	1.8	24.00
1985–1986	10	121	7381	11.6	61.0	16.4	23.00
1986–1987	11	22	8558	2.0	389.0	2.6	25.68
1987–1988	10	50	9750	5.0	195.0	5.1	40.00
1988–1989	6	10	1210	1.7	121.0	8.3	31.00
1989–1990	—	—	—	—	—	—	—
1990–1991	—	—	—	—	—	—	—
1991–1992	—	—	—	—	—	—	—
1992–1993	—	—	—	—	—	—	—
1993–1994	—	—	—	—	—	—	—
1994–1995	—	—	—	—	—	—	—
1995–1996	—	—	—	—	—	—	—
1996–1997	13	2	—	0.2	—	—	20.00
1997–1998	—	—	—	—	—	—	11.00
1998–1999	12	6	1228	0.5	204.7	4.9	7.11
Average	9	34	4919	3.8	143.7	7.0	21.18

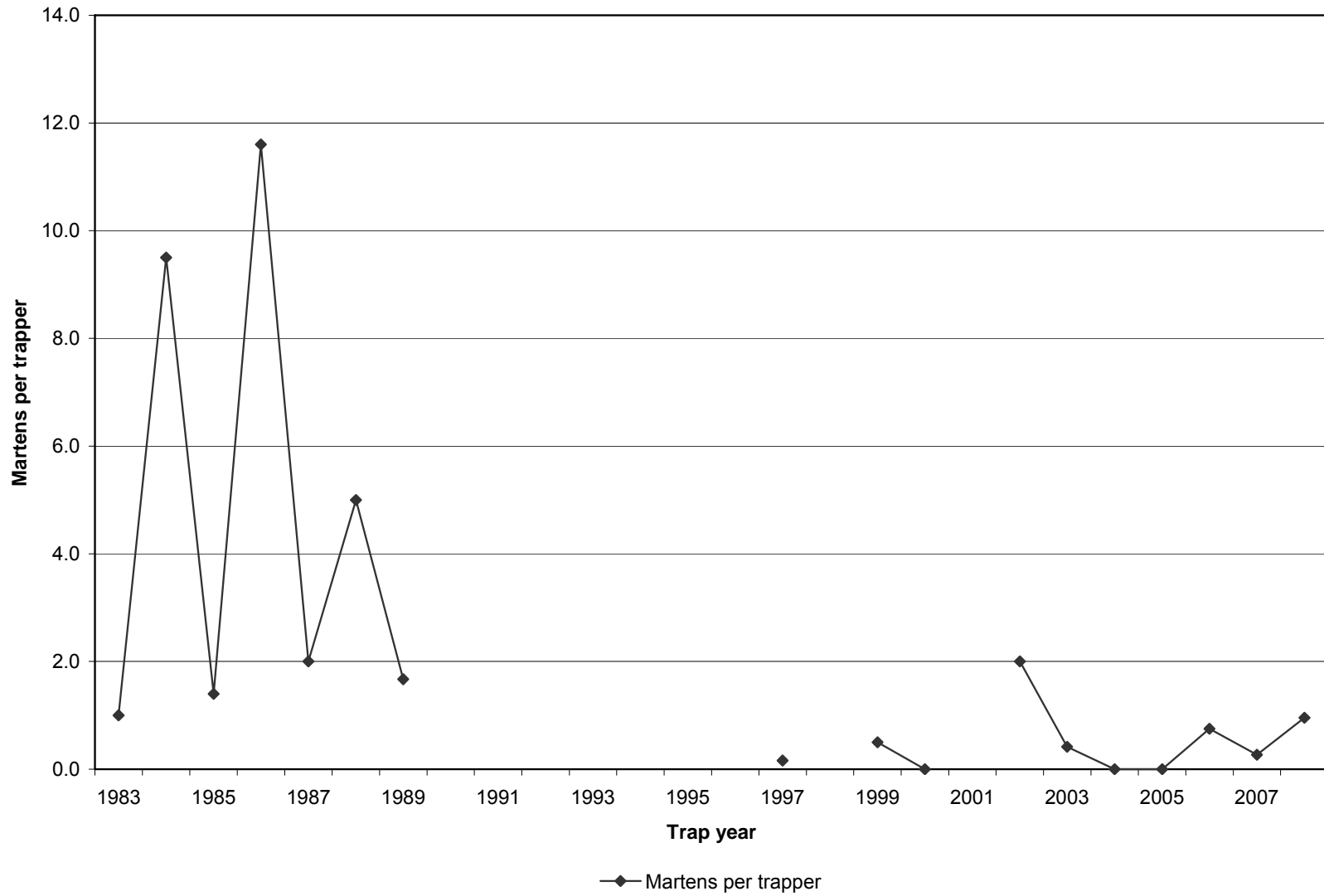
## Statewide marten harvest statistics, Utah 2000–2008.

Trap year	Permits sold	Successful trappers	Male harvest	Female harvest	Total harvest	Success rate (%)**	Martens / trapper**
1999–2000	5	0	0	0	0	0.0	0.0
2000–2001	—	1	3	3	6	—	—
2001–2002	11	2	16	6	22	18.2	2.0
2002–2003	12	1	3	2	5	8.3	0.4
2003–2004	18	0	0	0	0	0.0	0.0
2004–2005	12	0	0	0	0	0.0	0.0
2005–2006*	16	2	7	4	12	12.5	0.8
2006–2007	26	3	6	1	7	11.5	0.3
2007–2008	22	4	7	14	21	18.2	1.0
Average	12	1	4	2	6	6.5	0.5

\*Includes one marten harvested of unknown sex.

\*\*Assumption: Every person who possessed a marten permit trapped or hunted.

Statewide marten harvest trends, Utah 1983–2008.

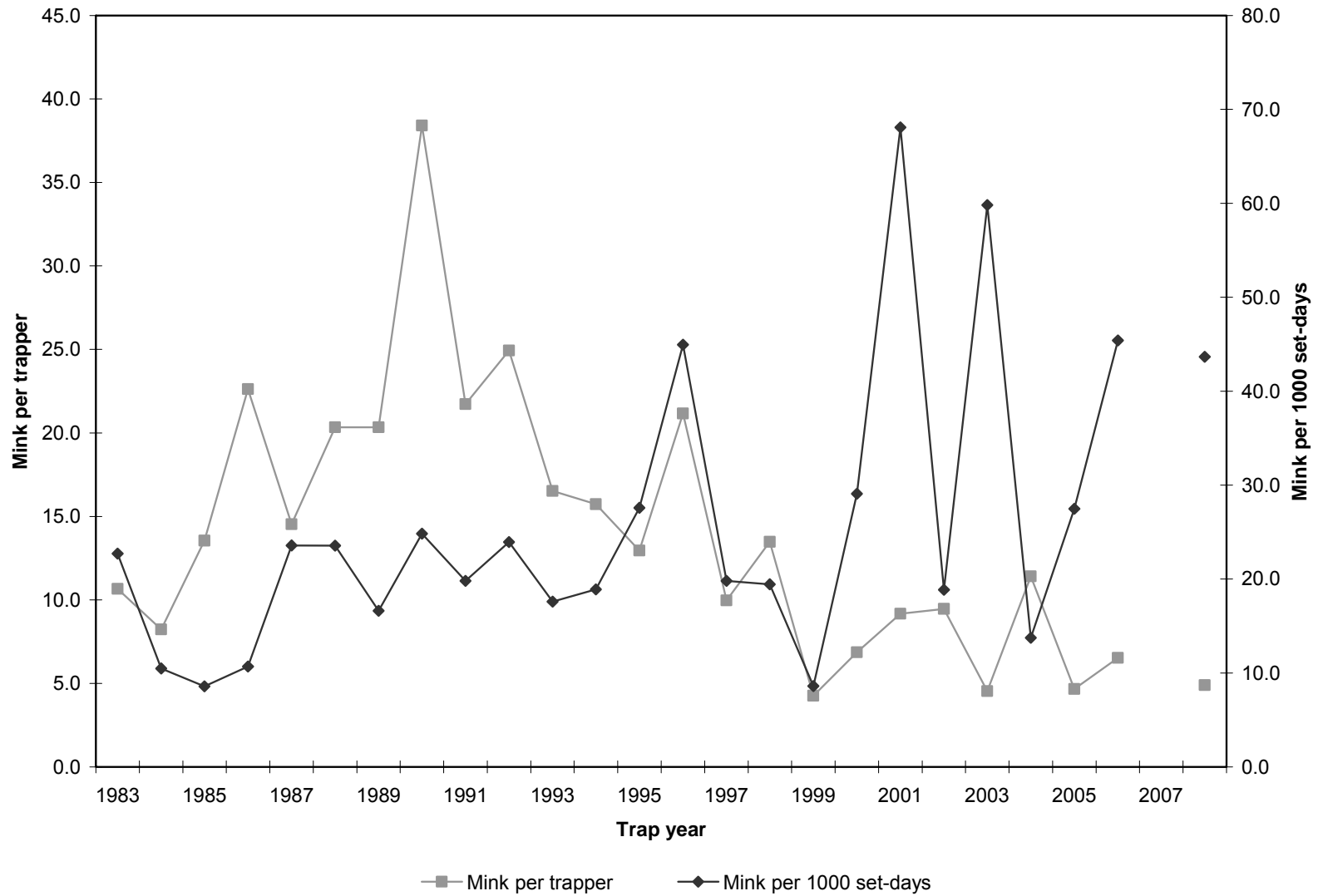


# MINK

Statewide mink harvest statistics, Utah 1983–2008.

Trap year	Trappers afield	Harvest	Set-days	Mink / trapper	Set-days / mink	Mink / 1000 set-days	Pelt price (\$)
1982–1983	38	405	17841	10.7	44.1	22.7	10.85
1983–1984	46	379	36144	8.2	95.4	10.5	9.13
1984–1985	40	542	63252	13.6	116.7	8.6	10.27
1985–1986	37	837	78306	22.6	93.6	10.7	6.00
1986–1987	57	828	35135	14.5	42.4	23.6	10.63
1987–1988	51	1037	44030	20.3	42.5	23.6	12.25
1988–1989	42	854	51361	20.3	60.1	16.6	10.69
1989–1990	29	1114	44850	38.4	40.3	24.8	6.30
1990–1991	25	543	27406	21.7	50.5	19.8	6.33
1991–1992	29	723	30219	24.9	41.8	23.9	6.81
1992–1993	23	380	21615	16.5	56.9	17.6	7.50
1993–1994	30	472	24958	15.7	52.9	18.9	8.41
1994–1995	27	350	12695	13.0	36.3	27.6	8.38
1995–1996	25	529	11767	21.2	22.2	45.0	10.40
1996–1997	27	269	13583	10.0	50.5	19.8	10.95
1997–1998	25	337	17339	13.5	51.5	19.4	5.81
1998–1999	81	345	40110	4.3	116.3	8.6	7.11
1999–2000	61	419	14408	6.9	34.4	29.1	6.07
2000–2001	51	468	6875	9.2	14.7	68.1	4.92
2001–2002	30	284	15076	9.5	53.1	18.8	5.20
2002–2003	59	268	4481	4.5	16.7	59.8	2.07
2003–2004	59	673	49004	11.4	72.8	13.7	8.00
2004–2005	68	317	11540	4.7	36.4	27.5	8.98
2005–2006	34	222	4888	6.5	22.0	45.4	9.97
2006-2007	65	—	—	—	—	—	7.94
2007-2008	38	186	4260	4.9	22.9	43.7	9.33
Average	42	511	27246	12.1	53.3	18.8	8.09

Statewide mink harvest trends, Utah 1983–2008.



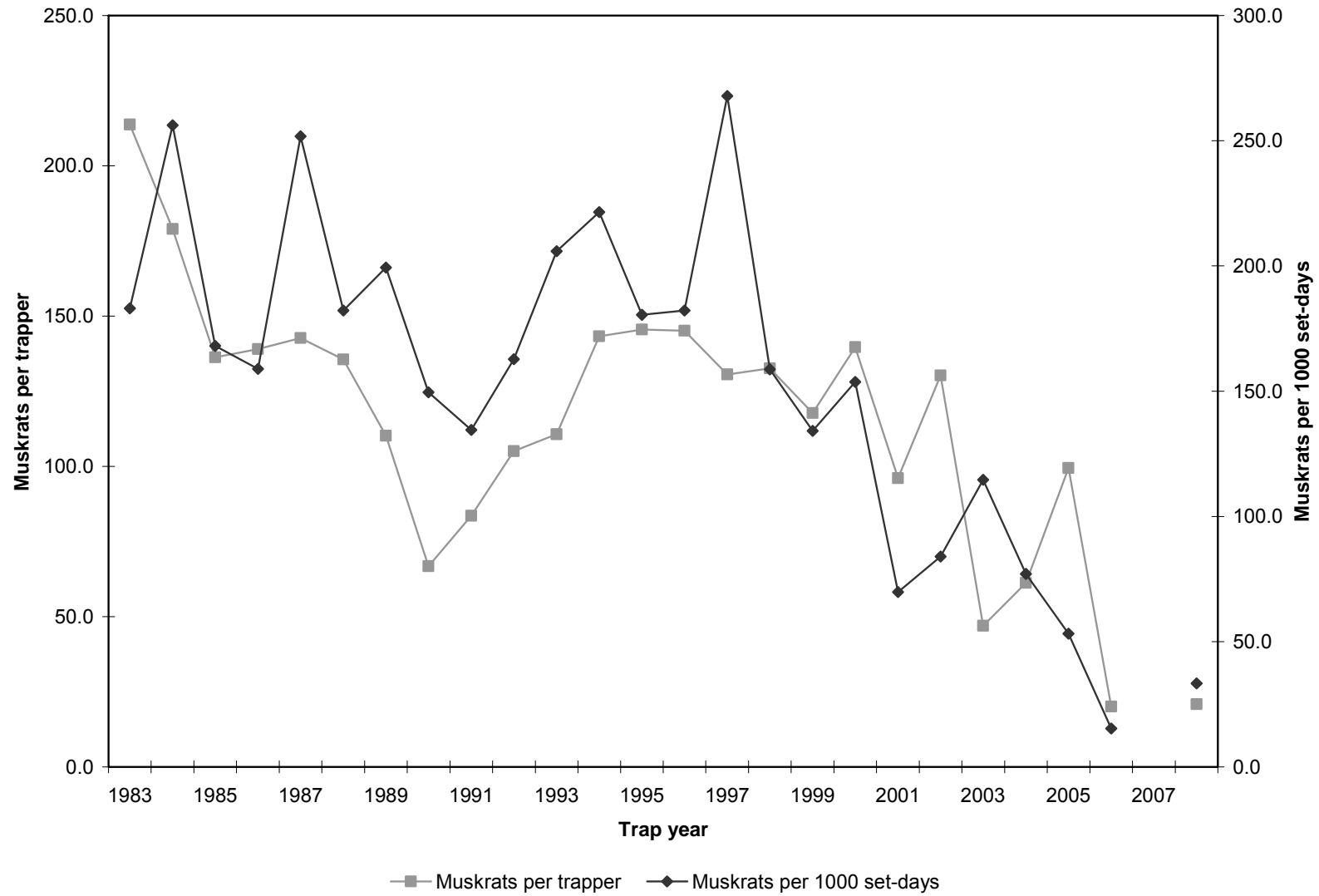
# MUSKRAT

Statewide muskrat harvest statistics, Utah 1983–2008.

Trap year	Trappers afield	Harvest	Set-days	Muskrats / trapper	Set-days / muskrat	Muskrats / 1000 set-days	Pelt price (\$)
1982–1983	258	55137	301146	213.7	5.5	183.1	2.16
1983–1984	309	55298	215836	179.0	3.9	256.2	2.46
1984–1985	400	54526	324435	136.3	6.0	168.1	2.45
1985–1986	282	39195	246641	139.0	6.3	158.9	1.86
1986–1987	416	59368	235861	142.7	4.0	251.7	2.66
1987–1988	432	58560	321448	135.6	5.5	182.2	2.46
1988–1989	303	33400	167542	110.2	5.0	199.4	1.40
1989–1990	253	16898	112946	66.8	6.7	149.6	0.89
1990–1991	85	7102	52769	83.6	7.4	134.6	0.91
1991–1992	186	19547	120128	105.1	6.1	162.7	1.60
1992–1993	105	11623	56443	110.7	4.9	205.9	1.18
1993–1994	157	22488	101514	143.2	4.5	221.5	1.89
1994–1995	195	28369	157144	145.5	5.5	180.5	1.74
1995–1996	181	26260	144096	145.1	5.5	182.2	2.09
1996–1997	179	23371	87251	130.6	3.7	267.9	3.59
1997–1998	203	26907	169547	132.5	6.3	158.7	2.01
1998–1999	186	21895	163222	117.7	7.5	134.1	1.73
1999–2000	151	21086	137152	139.6	6.5	153.7	1.00
2000–2001	108	10376	148608	96.1	14.3	69.8	1.58
2001–2002	115	14979	178362	130.3	11.9	84.0	2.60
2002–2003	135	6334	55261	46.9	8.7	114.6	1.59
2003–2004	176	10777	139915	61.2	13.0	77.0	1.57
2004–2005	151	15016	282593	99.4	18.8	53.1	1.57
2005–2006*	41	824	—	20.1	65.5	15.3	3.97
2006–2007	81	—	—	—	—	—	3.31
2007–2008	80	1665	49940	20.9	30.0	33.3	3.04
Average	199	25640	165408	129.0	6.5	155.0	2.05

\*Due to outliers in the data, statewide set-days could not be calculated. Set-days per fox and foxes per 1000 set-days were calculated after removing outliers.

Statewide muskrat harvest trends, Utah 1983–2008.



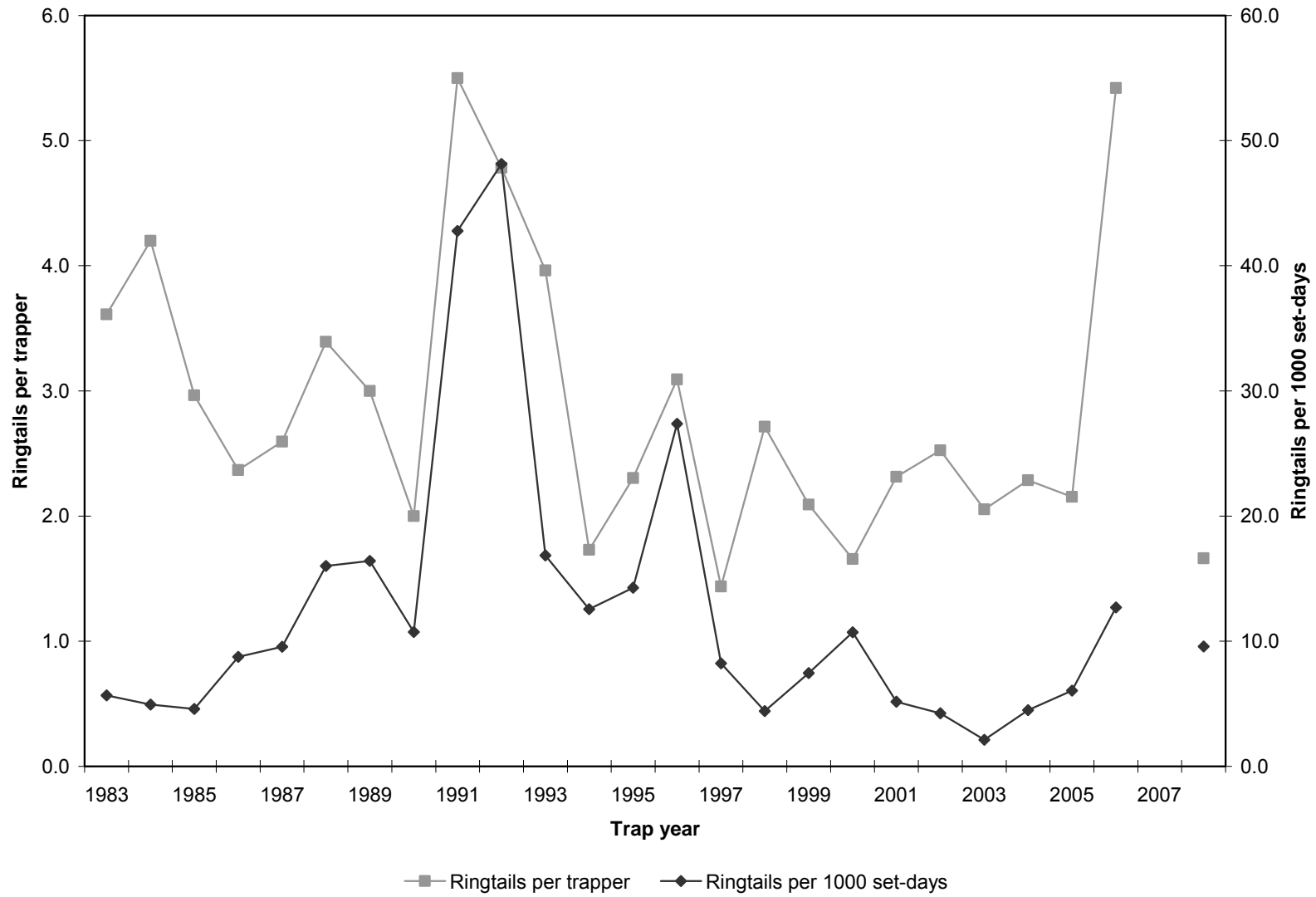
# RINGTAIL

Statewide ringtail harvest statistics, Utah 1983–2008.

Trap year	Trappers afield	Harvest	Set-days	Ringtails / trapper	Set-days / ringtail	Ringtails / 1000 set-days	Pelt price (\$)
1982–1983	90	325	57319	3.6	176.4	5.7	4.40
1983–1984	90	378	76599	4.2	202.6	4.9	3.96
1984–1985	85	252	54987	3.0	218.2	4.6	3.15
1985–1986	68	161	18398	2.4	114.3	8.8	2.69
1986–1987	79	205	21456	2.6	104.7	9.6	3.64
1987–1988	79	268	16748	3.4	62.5	16.0	2.40
1988–1989	62	186	11335	3.0	60.9	16.4	5.70
1989–1990	66	132	12313	2.0	93.3	10.7	2.65
1990–1991	18	99	2314	5.5	23.4	42.8	3.50
1991–1992	46	220	4570	4.8	20.8	48.1	3.22
1992–1993	27	107	6349	4.0	59.3	16.9	3.97
1993–1994	37	64	5096	1.7	79.6	12.6	4.04
1994–1995	69	159	11141	2.3	70.1	14.3	6.41
1995–1996	44	136	4970	3.1	36.5	27.4	6.96
1996–1997	32	46	5597	1.4	121.7	8.2	11.68
1997–1998	21	57	12919	2.7	226.6	4.4	2.99
1998–1999	66	138	18510	2.1	134.1	7.5	4.17
1999–2000	61	101	9432	1.7	93.4	10.7	7.03
2000–2001	51	118	22886	2.3	193.9	5.2	6.00
2001–2002	40	101	23803	2.5	235.7	4.2	10.29
2002–2003	56	115	54456	2.1	473.5	2.1	5.20
2003–2004	42	96	21380	2.3	222.7	4.5	6.83
2004–2005	59	127	20966	2.2	165.1	6.1	11.12
2005–2006	19	103	8115	5.4	78.8	12.7	9.31
2006-2007	98	—	—	—	—	—	12.37
2007-2008	65	108	11279	1.7	104.4	9.6	14.86
Average	57	152	20518	2.7	134.9	7.4	6.10



Statewide ringtail harvest trends, Utah 1983–2008.



# SKUNK

Statewide skunk harvest statistics, Utah 1983–2005.

Trap year	Trappers afield	Harvest	Set-days	Skunks / trapper	Set-days / skunk	Skunks / 1000 set-days	Pelt price (\$)
1982–1983	140	1540	30862	11.0	20.0	49.9	3.00
1983–1984	144	1262	57379	8.8	45.5	22.0	2.85
1984–1985	111	1097	47084	9.9	42.9	23.3	2.17
1985–1986	195	1741	59745	8.9	34.3	29.1	—
1986–1987	188	1851	42416	9.8	22.9	43.6	—
1987–1988	185	2404	34235	13.0	14.2	70.2	1.05
1988–1989	132	966	18409	7.3	19.1	52.5	0.30
1989–1990	173	1289	20279	7.5	15.7	63.6	0.30
1990–1991	82	645	8183	7.9	12.7	78.8	0.30
1991–1992	151	1037	18802	6.9	18.1	55.2	4.00
1992–1993	132	922	29638	7.0	32.1	31.1	5.30
1993–1994	175	1465	23185	8.4	15.8	63.2	7.35
1994–1995	183	1438	24744	7.9	17.2	58.1	9.29
1995–1996	175	1753	20650	10.0	11.8	84.9	6.63
1996–1997	142	1726	25728	12.2	14.9	67.1	6.00
1997–1998	182	2890	36040	15.9	12.5	80.2	4.11
1998–1999	219	3227	58578	14.7	18.2	55.1	5.67
1999–2000	188	2730	52166	14.5	19.1	52.3	8.50
2000–2001	220	3857	113545	17.5	29.4	34.0	8.69
2001–2002	214	1798	100936	8.4	56.1	17.8	6.79
2002–2003	237	1732	72927	7.3	42.1	23.7	4.24
2003–2004	295	2305	119328	7.8	51.8	19.3	10.00
2004–2005	280	4264	148611	15.2	34.9	28.7	4.64
Average	180	1910	50586	10.6	26.5	37.8	4.82

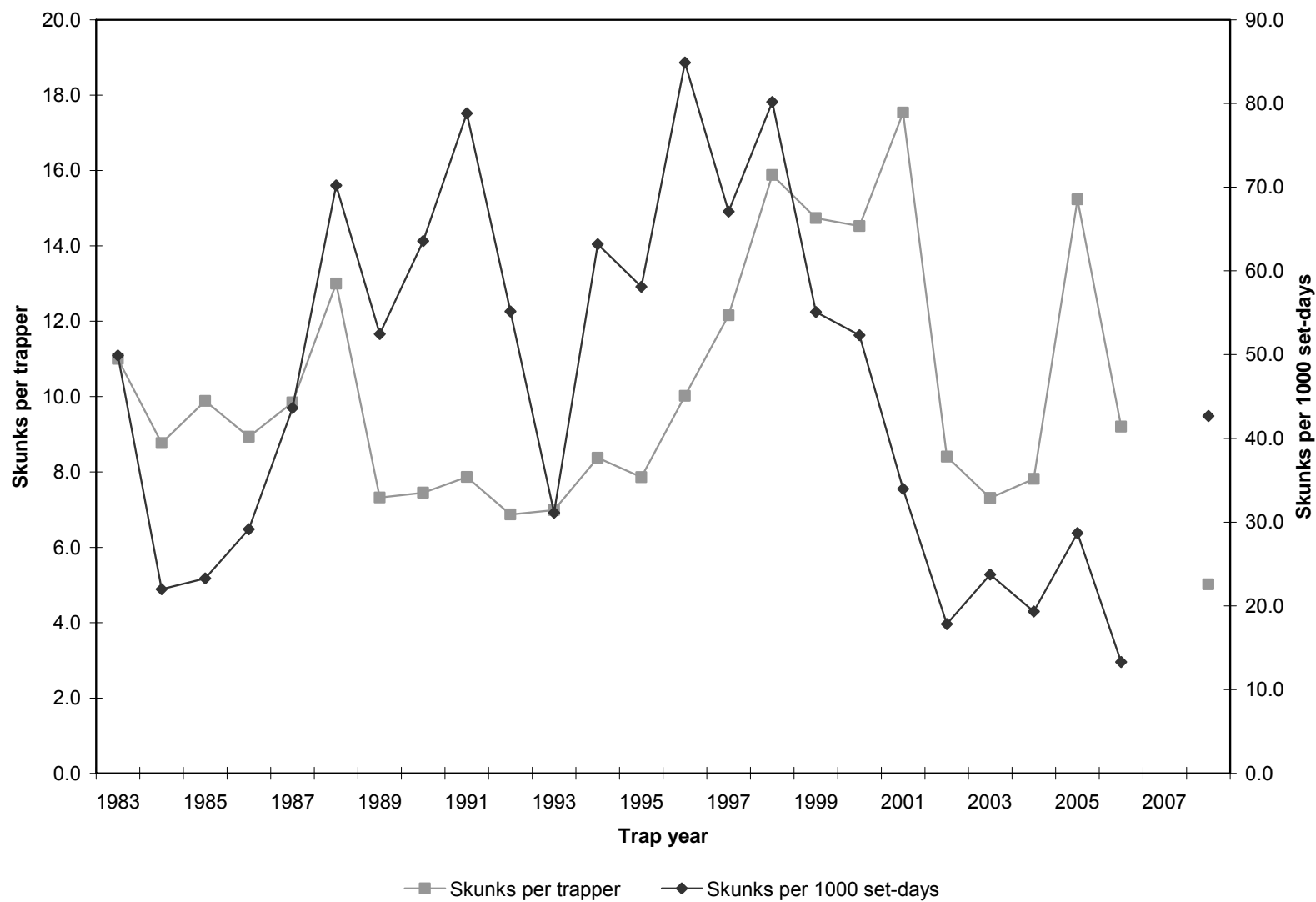
Statewide striped skunk harvest statistics, Utah 2006–2008.

Trap year	Trappers afield	Harvest	Set-days	Skunks / trapper	Set-days / skunk	Skunks / 1000 set-days	Pelt price (\$)
2005–2006	95	1043	82551	11.0	79.1	12.6	5.37
2006-2007	138	—	—	—	—	—	6.07
2007-2008	144	848	20699	5.9	24.4	41.0	4.52
Average	126	946	51625	7.5	54.6	18.3	5.32

Statewide spotted skunk harvest statistics, Utah 2006–2008.

Trap year	Trappers afield	Harvest	Set-days	Skunks / trapper	Set-days / skunk	Skunks / 1000 set-days	Pelt price (\$)
2005–2006	34	144	6797	4.2	47.2	21.2	5.37
2006-2007	106	—	—	—	—	—	12.42
2007-2008	34	45	231	1.3	5.1	194.8	12.07
Average	58	95	3514	1.6	37.2	26.9	9.95

Statewide skunk harvest trends, Utah 1983–2008.



Striped skunk harvest statistics by county and management unit, Utah 2008.

County	n	Trappers afield	Harvest	Traps set	Trapping days	Set-days	Skunks / trapper	Set-days / skunk	Skunks / 1000 set-days
Beaver	0	—	—	—	—	—	—	—	—
Box Elder	3	12	97	82	444	3165	8.1	32.6	30.6
Iron	1	4	4	22	115	640	1.0	160.0	6.3
Juab	1	4	8	22	174	974	2.0	121.8	8.2
Millard	0	—	—	—	—	—	—	—	—
Tooele	1	4	16	22	115	640	4.0	40.0	25.0
Great Basin totals	6	24	125	148	848	5419	5.2	43.4	23.1
Cache	0	—	—	—	—	—	—	—	—
Davis	1	4	78	58	155	2326	19.5	29.8	33.5
Morgan	1	4	4	4	8	8	1.0	2.0	500.0
Piute	0	—	—	—	—	—	—	—	—
Rich	0	—	—	—	—	—	—	—	—
Salt Lake	1	4	78	58	155	2326	19.5	29.8	33.5
Sanpete	2	8	23	60	231	1803	2.9	78.4	12.8
Sevier	4	16	39	68	681	2423	2.4	62.1	16.1
Summit	1	4	8	22	78	433	2.0	54.1	18.5
Utah	3	12	70	41	146	752	5.8	10.7	93.1
Wasatch	0	—	—	—	—	—	—	—	—
Weber	1	4	4	12	27	81	1.0	20.3	49.4
Rocky Mountain totals	14	56	304	323	1481	10152	5.4	33.4	29.9
Daggett	0	—	—	—	—	—	—	—	—
Duchesne	1	4	47	23	116	698	11.8	14.9	67.3
Uintah	0	—	—	—	—	—	—	—	—
Uintah Basin totals	1	4	47	23	116	698	11.8	14.9	67.3
Carbon	1	4	19	22	115	640	4.8	33.7	29.7
Emery	3	12	318	63	346	1861	26.5	5.9	170.9
Garfield	0	—	—	—	—	—	—	—	—
Grand	0	—	—	—	—	—	—	—	—
Kane	0	—	—	—	—	—	—	—	—
San Juan	1	4	16	22	115	640	4.0	40.0	25.0
Washington	0	—	—	—	—	—	—	—	—
Wayne	0	—	—	—	—	—	—	—	—
Colorado Plateau totals	5	20	353	107	576	3141	17.7	8.9	112.4
Unknown	2	8	19	43	231	1289	2.4	67.8	14.7
Statewide totals	27	144	848	644	3252	20699	5.9	24.4	41.0

\*Statewide totals for sample size and trappers afield are not totals of the columns because trappers trapped multiple counties.

# WEASEL

Statewide weasel harvest statistics, Utah 1983–2008.

Trap year	Trappers afield	Harvest	Set-days	Weasels / trapper	Set-days / weasel	Weasels / 1000 set-days	Pelt price (\$)
1982–1983	19	59	959	3.1	16.3	61.5	1.00
1983–1984	22	33	3872	1.5	117.3	8.5	0.00
1984–1985	46	75	7956	1.6	106.1	9.4	0.75
1985–1986	33	67	9992	2.0	149.1	6.7	0.00
1986–1987	50	123	5205	2.5	42.3	23.6	1.50
1987–1988	61	212	5874	3.5	27.7	36.1	1.18
1988–1989	24	91	791	3.8	8.7	115.0	0.25
1989–1990	25	33	5492	1.3	166.4	6.0	0.25
1990–1991	14	31	1248	2.2	40.3	24.8	0.30
1991–1992	17	19	168	1.1	8.8	113.1	0.30
1992–1993	24	28	284	1.2	10.1	98.6	0.30
1993–1994	20	31	208	1.6	6.7	149.0	5.11
1994–1995	18	13	15,451	0.7	1188.5	0.8	1.57
1995–1996	24	299	20,482	12.5	68.5	14.6	3.08
1996–1997	11	13	312	1.2	24.0	41.7	7.40
1997–1998	20	28	3101	1.4	110.8	9.0	3.03
1998–1999	15	33	5190	2.2	157.3	6.4	5.50
1999–2000	34	66	1058	1.9	16.0	62.4	—
2000–2001	36	155	5288	4.3	34.1	29.3	8.50
2001–2002	6	13	0	2.2	0.0	—	—
2002–2003	6	3	118	0.5	39.3	25.4	4.76
2003–2004	18	58	4215	3.2	72.7	13.8	—
2004–2005	25	85	1935	3.4	22.8	43.9	2.90
2005–2006	41	190	8172	4.6	43.0	23.3	—
2006–2007	49	—	—	—	—	—	6.26
2007–2008	11	15	585	1.3	39.0	25.6	2.99
Average	26	71	4318	2.8	60.9	16.4	2.59

Statewide weasel harvest trends, Utah 1983–2008.

