

# UTAH BLACK BEAR ANNUAL REPORT 2014



Publication No. 15-22



# UTAH BLACK BEAR ANNUAL REPORT 2014

Prepared by:

**Heather H. Bernalles**  
Biometrician

and

**Leslie McFarlane**  
Mammals Program Coordinator

Publication No. 15-22

Annual Performance Report for Federal Aid Project W-65-M, segments 62 and 63

State of Utah  
Department of Natural Resources  
DIVISION OF WILDLIFE RESOURCES

**Gregory Sheehan**  
Director

## TABLE OF CONTENTS

Introduction .....	1
Methods .....	1
Results .....	2
Historical statewide harvest and mortality .....	3
Sport harvest by unit .....	6
Method of take and guiding .....	8
Sex ratios .....	9
Pursuit .....	10
Livestock depredation .....	14
Appendix: Historical black bear harvest by hunt unit .....	15

## **INTRODUCTION**

The black bear harvest report presents black bear harvest and hunter effort trends across the state of Utah, based on data collected from bear hunters and compiled by the Utah Division of Wildlife Resources (Division). This report represents the black bear portion of Federal Aid Project W-65-M, segments 62 and 63, grant agreement periods October 1, 2013 through June 30, 2014 and July 1, 2014 through June 30, 2015, respectively. This Federal Aid project covers the 2014 hunting seasons. This report presents black bear statewide trends since the 1960s, as well as population trend indicators.

In addition to its traditional limited-entry hunts, beginning in 2012 Utah offered two new types of bear hunts: spot-and-stalk only hunts, where hunters could not use dogs or bait; and harvest-objective hunts, where an unlimited number of hunters could hunt in the harvest-objective unit until the quota was met or the season ended. Dogs or bait were not allowed in bear harvest-objective units, except for the spring Wasatch Mtns, Avintaquin/Currant Creek unit where dogs were allowed. Black bear pursuit was open in all 23 bear units. Three units (Book Cliffs, La Sal, and San Juan) were closed to general black bear pursuit during the summer and only pursuers who applied for and obtained a restricted pursuit permit were allowed to pursue in one of those units. A list of bear units, season dates, rules and regulations for the 2014 black bear hunting and pursuit seasons can be found in the 2014 Utah Black Bear Guidebook.

## **METHODS**

All successful hunters were required to have their bear checked by a Division office or officer within 48 hours of harvest. At that time, tooth samples were collected, and a permanent tag affixed. Bear harvest information was also collected. Teeth were sectioned and cementum annuli counted by an independent lab, to estimate age of harvested bear. Bears aged to be 5-yrs or older were considered adults for the purposes of calculating percent adult males in the harvest. Bear pursuit information was obtained using a telephone survey of a statistically-valid random sample of bear pursuit permit holders. Data were not collected for the fall pursuit season.

Harvest data from depredating bears, or bears involved in human safety incidents, were taken from damage reports received from USDA-APHIS Wildlife Services and from bears taken by Division personnel. Livestock operators could kill damaging bears and were required to have the carcass checked by a Division officer within 48 hours. Harvest information was collected at that time. Other mortality includes roadkill, poaching, found dead, etc.

### **Changes from Previous Reports**

This annual report presents the most complete and accurate summary of black bear harvest data available at the time of publication. Occasionally, we will adjust previous years' harvest numbers in a subsequent report as more data were made available after publication. This is typically the case with counts of Wildlife Services (depredation) mortality, and only rarely will counts of hunter harvest need adjustment.

## RESULTS

In 2014, 540 limited-entry black bear permits and 107 harvest-objective permits were sold. Hunters harvested 283 bears, 186 of which were taken in the spring and 97 in the fall. 50% of permits/quota were filled. The Nine Mile unit filled its fall harvest objective and the season closed a month early. Neither of the other two harvest-objective units filled their quotas. The percent of females in the harvest decreased from 32% in 2013 to 30% in 2014. 95 bears were killed as a result of depredation or other mortality.

Utah issued 498 black bear pursuit permits in 2014. Of these, 102 permits were sold through a drawing system and were valid for one restricted summer pursuit unit/season, in addition to all other unrestricted units and seasons. A total of 304 pursuers went afield during the spring pursuit season, while 175 pursuers pursued in unrestricted units during the summer pursuit season, and 55 pursuers pursued in restricted units during the restricted summer pursuit seasons. During the spring pursuit season, pursuers treed 0.4 bears per day, while during the summer pursuit season, pursuers treed 0.5 bears per day.

More detailed information describing the 2014 black bear harvest and black bear harvest trends can be found in the following tables and figures.

Historical statewide black bear harvest statistics, Utah 1967–2000.

Year	Permits sold	Hunters afield	Sport harvest	% permits filled	Bears / hunter	% female	Depredation / other mortality	Total harvest + mortality	Pursuit permits*
1967	—	—	15	—	—	—	12	27	—
1968	—	—	12	—	—	—	9	21	—
1969	43	31	25	58	0.8	—	27	52	—
1970	155	119	9	6	0.1	—	18	27	—
1971	59	48	17	29	0.4	—	16	33	—
1972	96	77	19	20	0.3	—	7	26	—
1973	125	114	25	20	0.2	—	0	25	—
1974	134	117	29	22	0.3	—	9	38	—
1975	161	144	22	14	0.2	41	2	24	161
1976	107	96	10	9	0.1	42	7	17	48
1977	149	127	26	17	0.2	33	6	32	77
1978	222	185	40	18	0.2	33	10	50	114
1979	240	196	26	11	0.1	19	5	31	91
1980	217	177	26	12	0.2	28	6	32	95
1981	263	227	39	15	0.2	30	4	43	95
1982	229	188	38	17	0.2	39	6	44	93
1983	219	176	18	8	0.1	44	9	27	98
1984	217	184	26	12	0.1	31	6	32	33
1985	269	230	29	11	0.1	27	10	39	86
1986	332	302	72	22	0.2	45	6	78	90
1987	326	262	44	13	0.2	35	25	69	156
1988	491	394	69	14	0.2	35	28	97	173
1989	687	556	97	14	0.2	30	10	107	187
1990	142	119	22	15	0.2	18	16	38	355
1991	142	119	35	25	0.3	23	15	50	364
1992	142	124	32	23	0.3	19	25	57	524
1993	162	136	35	22	0.3	51	12	47	570
1994	168	153	42	25	0.3	40	20	62	552
1995	175	156	53	30	0.3	34	34	87	627
1996	181	174	68	38	0.4	43	35	103	630
1997	192	176	50	26	0.3	44	31	81	638
1998	202	181	46	23	0.3	42	42	88	635
1999	220	199	57	26	0.3	30	35	92	264
2000	214	194	75	35	0.4	35	72	147	285

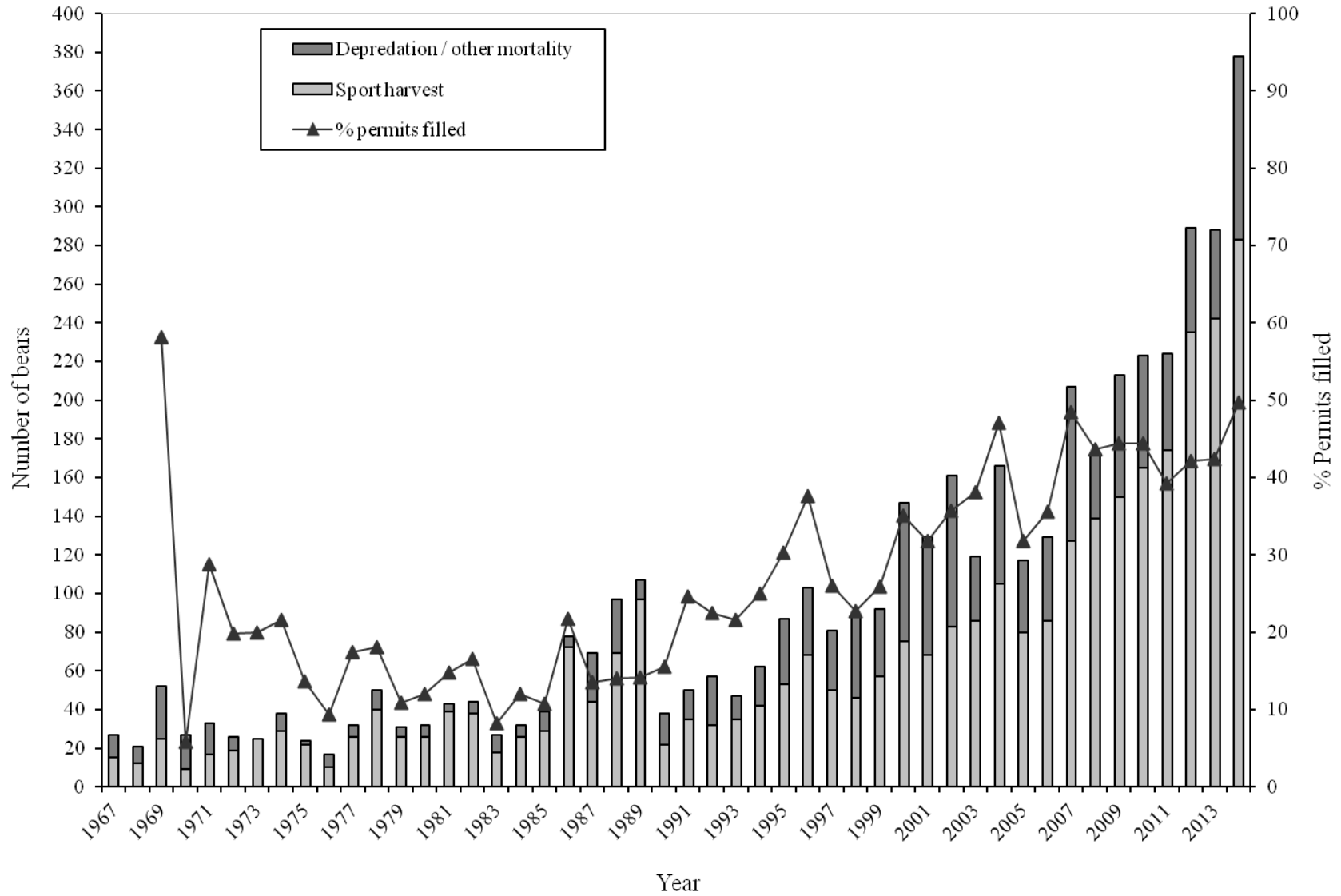
\*Beginning in 1999, a bear-only pursuit permit was issued. Prior to 1999, cougar/bear pursuit permits were issued.

Statewide black bear harvest and mortality statistics, Utah 2001–2014.

Year	Sport harvest								Depredation / other mortality					Total harvest + mortality	
	Permits issued	Spring harvest		Fall harvest		Unknown	Total	% permits filled	% female	% adult male	Mean age	Male	Female		Unknown
2001	214	17	3	24	22	2	68	32	37	—	6.9	39	21	1	129
2002	232	30	6	23	21	3	83	36	33	—	6.8	43	27	8	161
2003	226	27	12	32	15	0	86	38	31	—	7.4	22	8	3	119
2004	240	30	7	53	15	0	105	44	21	—	6.6	34	23	4	166
2005	252	14	3	47	16	0	80	32	24	—	6.6	16	17	4	117
2006	242	36	20	22	8	0	86	36	33	—	6.6	20	16	7	129
2007	262	60	19	31	17	0	127	48	28	—	5.8	48	24	8	207
2008	318	64	25	32	16	2	139	44	29	—	6.3	18	8	7	172
2009	338	75	34	29	12	0	150	44	31	—	6.4	39	22	2	213
2010	372	72	29	38	26	0	165	44	33	—	6.0	36	20	2	223
2011	444	89	23	43	19	0	174	39	24	41	5.5	30	20	0	224
2012	558*	111	51	40	33	0	235	42	36	32	5.8	33	19	2	289
2013	570*	115	39	50	38	0	242	42	32	34	6.0	30	16	0	288
2014	570*	133	53	65	32	0	283	50	30	32	5.3	57	36	2	378
Mean	346	62	23	38	21	1	145	41	30	35	6.3	33	20	4	201

\*Includes harvest-objective quotas.

Statewide black bear mortality, Utah 1967–2014.





Statewide black bear spring and fall sport harvest by unit / subunit, Utah 2014.

Unit / Subunit	Permits issued				Spring harvest		Fall harvest		Total harvest	% permits filled	% female	% adult male	
	Spring	Fall	Harvest-objective quota	Premium / conservation	Total	Male	Female	Male					Female
Beaver	10	6	10 (fall)	1	27	1	2	3	2	8	30	50	14
Book Cliffs, Bitter Creek/South	24	6	—	5	35	15	2	2	2	21	60	19	37
Book Cliffs, Little Creek	5	4	—	1	10	3	0	0	0	3	30	0	67
Cache/ East Canyon /Morgan-Rich/Ogden	3	1	—	0	4	0	0	0	0	0	0	—	—
Central Mtns, Manti-North	20	5	—	4	29	9	2	2	2	15	52	27	20
Central Mtns, Manti-South	4	9	—	3	16	2	1	8	1	12	75	17	20
Central Mtns, Nebo	14	4	—	3	21	4	9	1	1	15	71	67	8
Chalk Creek/Kamas/North Slope, Summit	5	6	—	2	13	2	1	1	1	5	38	40	40
Fillmore, Pahvant	1	1	—	0	2	0	0	0	0	0	0	—	—
La Sal	37	35*	—	7	79	21	4	6	7	38	48	29	38
Monroe	0	1	—	0	1	0	0	1	0	1	100	0	100
Mt. Dutton	2	1	—	0	3	1	0	1	0	2	67	0	50
Nine Mile	26	16	10**	2	44	12	4	6	4	26	59	31	38
North Slope, Daggett/Three Corners	6	4	—	2	12	0	1	2	0	3	25	33	0
Panguitch Lake/Zion	8	5	—	3	16	2	0	1	0	3	19	0	0
Paunsaugunt	2	2	—	0	4	1	0	0	1	2	50	50	0
Plateau, Boulder/Kaiparowits	24	12	—	6	42	6	5	5	2	18	43	39	22
Plateau, Fishlake/Thousand Lakes	4	2	—	1	7	2	0	1	0	3	43	0	50
San Juan	37	35*	—	7	79	22	5	12	2	41	52	17	58
South Slope, Bonanza/Diamond Mtn/Vernal	20	7	—	4	31	7	3	2	4	16	52	44	31
South Slope, Yellowstone	10	5	—	3	18	2	2	4	0	8	44	25	13
Wasatch Mtns, Avintaquin/Currant Creek	0	9	10 (spring)	1	20	5	2	2	1	10	50	30	30
Wasatch Mtns, West	37	10	—	8	55	16	10	5	2	33	60	36	21
Statewide total‡	299	186	—	65‡	570	133	53	65	32	283	50	30	32

\*Includes 2 fall seasons: 5 permits for the regular limited-entry hunt and 30 permits for the spot-and-stalk only hunt.

\*\*Harvest during the regular fall limited-entry season counted towards the harvest-objective quota.

‡Total conservation/premium permits include 1 statewide conservation permit and 1 statewide sportsman permit.

Black bear harvest-objective sport harvest, by hunt, Utah 2014.

Unit / subunit	Quota	Female subquota	Sport harvest			% quota filled
			Male	Female	Total	
Beaver	10	4	0	0	0	0
Nine Mile	10*	NA	6	4	10	100*
Wasatch Mtns, Avintaquin/Currant Creek	10	NA	5	2	7	70

\*Harvest during the regular fall limited-entry season counted towards the harvest-objective quota, so was included in “% quota filled”.

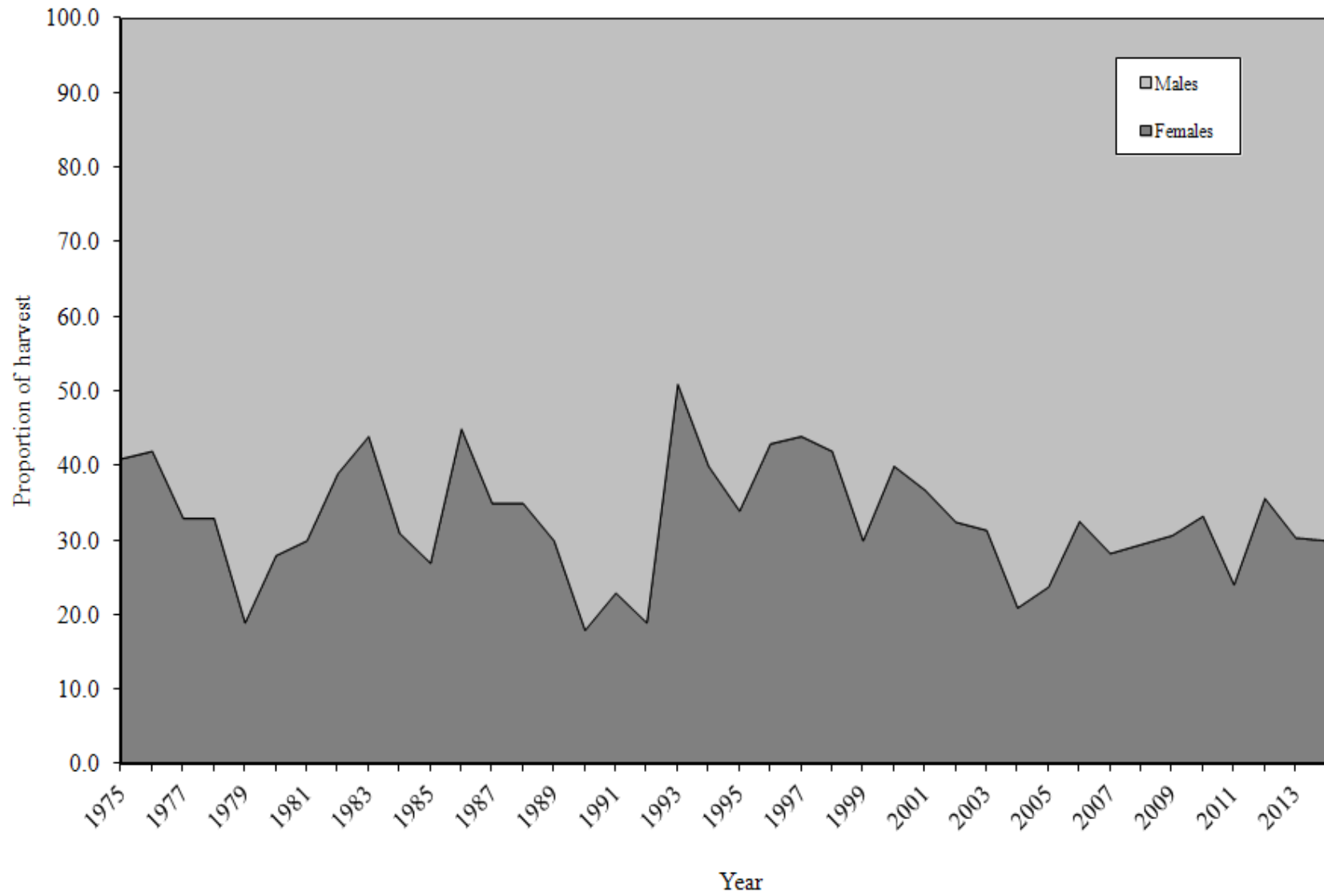
Black bear spot-and-stalk limited-entry sport harvest, by hunt, Utah 2014.

Hunt number	Unit / subunit	Permits	Sport harvest			% permits filled
			Male	Female	Total	
7200	Book Cliffs, Little Creek Roadless (spring)	5	2	0	2	40
7201	Book Cliffs, Little Creek Roadless (fall)	4	0	0	0	0
7202	La Sal	30	3	2	5	17
7203	San Juan	30	7	1	8	27
7301	Book Cliffs, Little Creek Roadless (premium)	1	1	0	1	100

Percent of black bear harvest by method of take, Utah 2001–2014.

Year	Method of take (%)					% harvest taken by archery	% harvest taken with the use of a guide
	Bait	Dogs	Calls	Stalk	Unknown		
2001	6	65	1	4	24	12	41
2002	8	71	0	1	19	18	33
2003	12	70	0	0	19	26	22
2004	17	65	2	8	9	31	37
2005	8	84	1	3	5	26	29
2006	6	77	0	10	7	21	41
2007	12	75	0	7	6	26	32
2008	14	71	1	12	2	31	33
2009	19	66	0	12	3	33	31
2010	18	67	0	8	7	33	32
2011	16	68	0	10	6	25	29
2012	21	57	0	19	3	32	19
2013	20	62	0	17	1	30	18
2014	24	58	0	16	3	37	16

Sex ratio of black bear sport harvest, Utah 1975–2014.



Statewide black bear pursuit statistics, Utah 2002–2014.

Year	Permits sold	Spring				General summer / fall			
		n	Pursuers	Bears / pursuit-day	Bears / pursuer	n	Pursuers	Bears / pursuit-day	Bears / pursuer
2002	359	88	318	0.5	7.5	—	—	—	—
2003	378	91	291	0.5	8.7	65	228	0.5	6.2
2004	373	73	309	0.4	5.0	54	212	0.5	5.9
2005	414	103	256	0.4	5.0	220	436	0.3	2.7
2006	353	78	328	0.3	3.7	—	—	—	—
2007	363	120	329	0.5	6.5	57	157	0.6	4.3
2008	391	96	313	0.6	7.8	73	238	0.9	5.4
2009	424	90	359	0.4	5.1	72	287	0.5	4.9
2010	460	172	326	0.4	4.9	79	164	0.3	2.6
2011	504	102	308	0.4	5.3	57	172	0.5	3.0
2012	456	100	285	0.4	5.6	49	140	0.3	2.4
2013	468	108	318	0.5	5.6	55	162	0.3	2.2
2014	498	99	304	0.4	5.2	57	175	0.5	3.3
Mean	419	102	311	0.4	5.8	76	216	0.5	3.9

Spring 2002 includes summer/fall 2001 and spring 2002.

Spring 2003 includes summer/fall 2002 and spring 2003.

Beginning with 2007, summer/fall only includes summer season.

Beginning in 2010, general summer / fall pursuit does not include pursuit activity from restricted summer pursuit units.

Black bear pursuit statistics, restricted summer pursuit units, 2010-2014.

Year	Permits sold	n	Pursuers	Bears / pursuit-day	Bears / pursuer
2010	100	70	63	0.8	4.9
2011	122	57	70	0.6	4.3
2012	103	51	54	0.6	3.8
2013	98	51	65	0.8	4.3
2014	102	54	55	0.7	6.6
Mean	105	57	61	0.7	4.8

Statewide spring black bear pursuit statistics by unit / subunit, Utah 2014.

Unit / Subunit	n	Pursuers afield	Pursuit- days afield	Number of bears treed					Bears treed / pursuit-day	Bears treed / pursuer
				Males	Females	Cubs	Unknown	Total		
Beaver	5	15	74	3	15	6	3	27	0.4	1.8
Book Cliffs, Bitter Creek/South	21	65	1147	172	224	58	31	485	0.4	7.5
Book Cliffs, Little Creek	2	6	58	15	15	0	6	36	0.6	6.0
Cache/East Canyon/Morgan Rich/Ogden	1	3	3	0	0	0	0	0	0.0	0.0
Central Mountains, Manti-North	4	12	108	12	3	0	6	21	0.2	1.8
Central Mountains, Manti-South	6	18	151	22	22	3	0	47	0.3	2.6
Central Mountains, Nebo	3	9	61	0	0	0	0	0	0.0	0.0
Chalk Creek/Kamas/North Slope, Summit	0	0	0	0	0	0	0	0	—	—
Fillmore, Pahvant	0	0	0	0	0	0	0	0	—	—
La Sal	14	43	596	157	181	52	10	400	0.7	9.3
Monroe	0	0	0	0	0	0	0	0	—	—
Mt. Dutton	0	0	0	0	0	0	0	0	—	—
Nine Mile	4	12	55	9	9	3	0	21	0.4	1.8
North Slope, Daggett/Three Corners	1	3	6	0	0	0	0	0	0.0	0.0
Panguitch Lake/Zion	2	6	46	0	6	3	0	9	0.2	1.5
Paunsaugunt	0	0	0	0	0	0	0	0	—	—
Plateau, Boulder/Kaiparowits	6	18	83	9	6	0	12	27	0.3	1.5
Plateau, Fishlake/Thousand Lakes	1	3	12	3	0	0	0	3	0.3	1.0
San Juan	19	58	639	166	123	37	15	341	0.5	5.9
South Slope, Bonanza/Diamond Mtn/Vernal	7	22	264	46	43	9	0	98	0.4	4.5
South Slope, Yellowstone	4	12	92	3	12	18	0	33	0.4	2.8
Wasatch Mountains, Avintaquin/Currant Creek	6	18	92	9	3	3	0	15	0.2	0.8
Wasatch Mountains, West	7	22	74	22	15	6	0	43	0.6	2.0
Unknown	6	18	83	12	0	0	3	15	0.2	0.8
Statewide total*	99	304	3570	657	662	192	83	1594	0.4	5.2

\*Totals for sample size and pursuers afield are not the sum of the columns because pursuers could pursue on multiple units. 162 permit holders surveyed; 498 permits sold; projection factor = 3.07

Statewide general summer black bear pursuit statistics by unit / subunit, Utah 2014.

Unit / Subunit	n	Pursuers afield	Pursuit- days afield	Number of bears treed					Bears treed / pursuit-day	Bears treed / pursuer
				Males	Females	Cubs	Unknown	Total		
Beaver	6	18	178	9	49	9	0	67	0.4	3.7
Cache/East Canyon/Morgan Rich/Ogden	1	3	9	0	0	0	0	0	0.0	0.0
Central Mountains, Manti-North	4	12	22	0	6	6	3	15	0.7	1.3
Central Mountains, Manti-South	7	22	191	37	46	18	0	101	0.5	4.6
Central Mountains, Nebo	1	3	3	0	0	0	0	0	0.0	0.0
Chalk Creek/Kamas/North Slope, Summit	1	3	6	0	0	0	0	0	0.0	0.0
Fillmore, Pahvant	0	0	0	0	0	0	0	0	—	—
Monroe	0	0	0	0	0	0	0	0	—	—
Mt. Dutton	1	3	12	3	0	0	3	6	0.5	2.0
Nine Mile	2	6	46	6	12	9	0	27	0.6	4.5
North Slope, Daggett/Three Corners	0	0	0	0	0	0	0	0	—	—
Panguitch Lake/Zion	1	3	6	0	0	0	0	0	0.0	0.0
Paunsaugunt	0	0	0	0	0	0	0	0	—	—
Plateau, Boulder/Kaiparowits	4	12	18	3	0	0	0	3	0.2	0.3
Plateau, Fishlake/Thousand Lakes	2	6	15	3	3	0	0	6	0.4	1.0
South Slope, Bonanza/Diamond Mtn/Vernal	8	25	323	92	89	40	3	224	0.7	9.0
South Slope, Yellowstone	2	6	68	15	15	6	0	36	0.5	6.0
Wasatch Mountains, Avintaquin/Currant Creek	3	9	31	0	0	0	6	6	0.2	0.7
Wasatch Mountains, West	5	15	68	12	15	12	0	39	0.6	2.6
Unknown	15	46	283	33	46	30	6	115	0.4	2.5
Statewide total*	57	175	1101	204	232	121	21	578	0.5	3.3

\*Totals for sample size and pursuers afield are not the sum of the columns because pursuers could pursue on multiple units.

162 permit holders surveyed; 498 permits sold; projection factor = 3.07

45% of permit holders indicated that they intended to pursue fall season

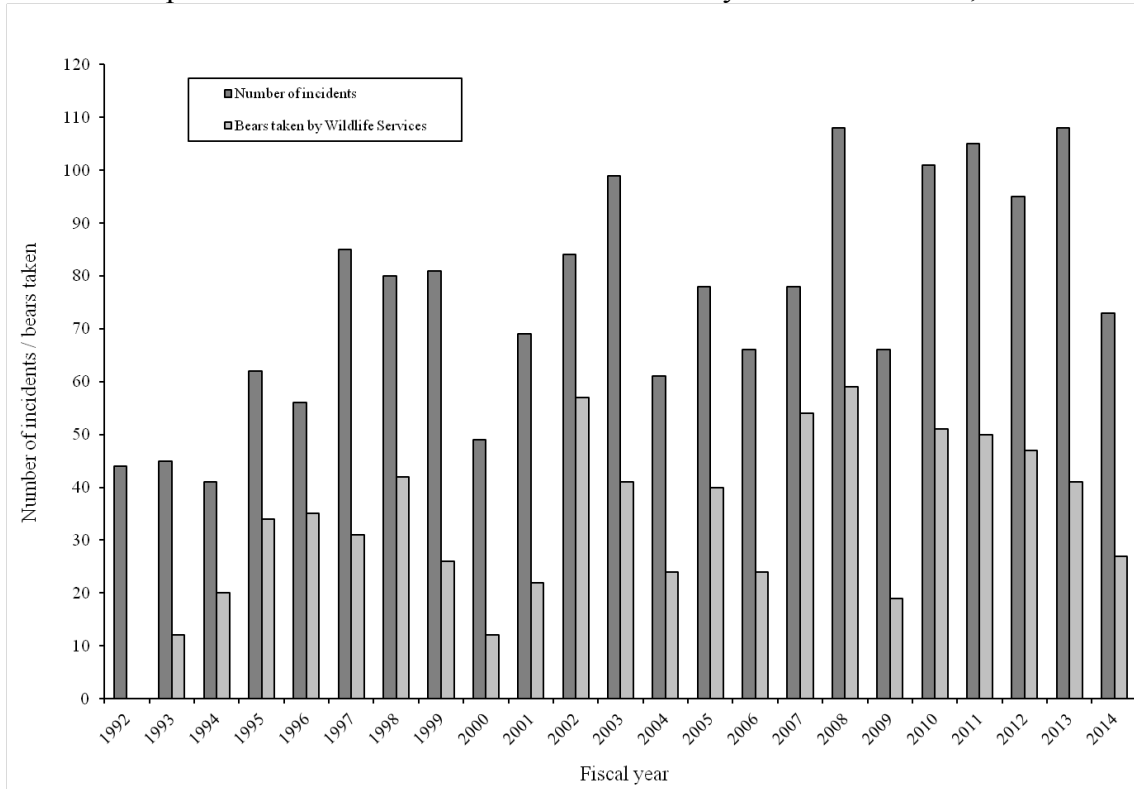
Summer black bear pursuit statistics in restricted units, by unit and season, Utah 2014.

Unit and season	Permits	n	Pursuers afield	Pursuit- days afield	Number of bears treed					Bears treed / pursuit-day	Bears treed / pursuer
					Males	Females	Cubs	Unknown	Total		
Book Cliffs (early)	28	19	10	108	22	28	22	0	72	0.7	7.2
La Sal (early)	13	6	9	69	7	20	11	9	47	0.7	5.2
San Juan (early)	8	4	6	48	14	10	18	8	50	1.0	8.3
Book Cliffs (late)	28	15	17	164	56	49	6	2	113	0.7	6.6
La Sal (late)	5	2	5	23	8	18	15	0	41	1.8	8.2
San Juan (late)	20	8	8	113	13	10	0	10	33	0.3	4.1

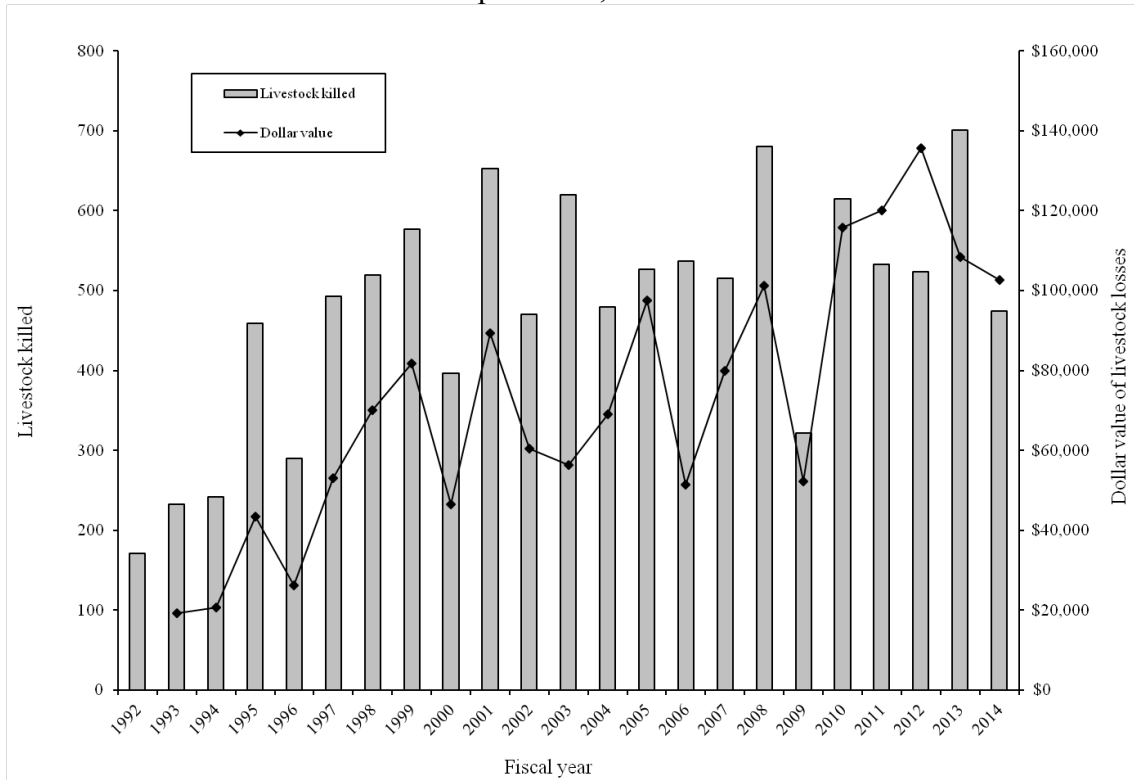
54 permit holders surveyed; 102 permits sold



Livestock depredation incidents and black bears killed by Wildlife Services, Utah 1992–2014.



Livestock losses due to black bear depredation, Utah 1992–2014.



## **APPENDIX**

### **HISTORICAL BLACK BEAR HARVEST BY HUNT UNIT**

Black bear mortality for unit 2/3/4/5 – Cache/Ogden/Morgan-Rich/East Canyon, Utah 1990–2014.

Year	Sport harvest							Depredation / other mortality			Total harvest + mortality			
	Permits issued	Spring		Fall		Total	% permits filled	% adult male	% female	Mean age		Male	Female	Unknown
1990	1	—	—	0	0	0	0	—	—	—	0	0	0	0
1991	1	—	—	0	0	0	0	—	—	—	0	0	0	0
1992	1	—	—	0	0	0	0	—	—	—	0	0	0	0
1993	1	—	—	0	0	0	0	—	—	—	0	0	0	0
1994	1	—	—	0	0	0	0	—	—	—	0	0	0	0
1995	1	—	—	0	0	0	0	—	—	—	0	0	0	0
1996	1	—	—	0	0	0	0	—	—	—	0	0	0	0
1997	1	—	—	0	0	0	0	—	—	—	1	0	0	1
1998	1	—	—	0	0	0	0	—	—	—	0	0	1	1
1999	1	—	—	0	0	0	0	—	—	—	1	0	0	1
2000	1	—	—	1	0	1	100	—	0	3.0	0	0	0	1
2001	1	—	—	0	0	0	0	—	—	—	0	0	0	0
2002	1	—	—	0	0	0	0	—	—	—	0	0	0	0
2003	1	—	—	0	0	0	0	—	—	—	0	0	0	0
2004	1	—	—	0	0	0	0	—	—	—	0	0	0	0
2005	1	—	—	0	0	0	0	—	—	—	0	0	0	0
2006	2	0	0	0	0	0	0	—	—	—	0	0	1	1
2007	2	0	0	0	0	0	0	—	—	—	3	1	0	4
2008	4	0	0	0	0	0	0	—	—	—	1	0	0	1
2009	4	0	0	0	0	0	0	—	—	—	0	1	0	1
2010	4	1	0	0	0	1	25	100	0	6.0	1	1	0	3
2011	4	1	0	0	0	1	25	100	0	6.0	1	0	0	2
2012	4	2	0	0	0	2	50	0	0	2.0	1	0	0	3
2013	4	1	0	0	0	1	25	100	0	5.0	2	0	0	3
2014	4	0	0	0	0	0	0	—	—	—	1	2	0	3
Mean	2	1	0	0	0	0	13	75	0	4.4	0	0	0	1

\* Unit 2 was pursuit only in 2003.

\*\* Unit 5 was added to units 2, 3, and 4 in 2004.

Black bear mortality for unit 6/7/8a – Chalk Creek/Kamas/North Slope, Summit, Utah 1990–2014.

Year	Sport harvest							Depredation / other mortality			Total harvest + mortality			
	Permits issued	Spring		Fall		Total	% permits filled	% adult male	% female	Mean age		Male	Female	Unknown
1990	3	—	—	0	0	0	0	—	—	—	0	0	0	0
1991	3	—	—	0	0	0	0	—	—	—	1	0	0	1
1992	3	—	—	1	0	1	33	—	0	—	0	0	0	1
1993	3	—	—	0	0	0	0	—	—	—	3	0	0	3
1994	3	—	—	0	0	0	0	—	—	—	0	1	0	1
1995	3	—	—	0	0	0	0	—	—	—	4	0	0	4
1996	2	—	—	0	0	0	0	—	—	—	0	0	0	0
1997	2	—	—	1	0	1	50	—	0	—	3	0	0	4
1998	2	—	—	0	1	1	50	—	100	—	4	1	0	6
1999	2	—	—	0	0	0	0	—	—	—	3	1	0	4
2000	2	—	—	0	1	1	50	—	100	—	3	0	0	4
2001	2	—	—	0	0	0	0	—	—	—	6	7	0	13
2002	2	—	—	0	0	0	0	—	—	—	6	1	0	7
2003	2	—	—	1	0	1	50	—	0	—	2	1	0	4
2004	5	—	—	1	0	1	20	—	0	2.0	1	3	0	5
2005	5	—	—	2	1	3	60	—	33	2.5	2	1	2	8
2006	8	1	0	1	0	2	25	—	0	5.0	3	0	0	5
2007	8	2	0	1	0	3	38	—	0	2.3	8	3	0	14
2008	11	1	0	0	0	1	9	—	0	3.0	3	1	0	5
2009	11	1	2	0	0	3	27	33	67	6.7	3	1	0	7
2010	13	1	1	3	2	7	54	0	43	6.5	5	2	0	14
2011	13	0	1	3	1	5	38	0	40	3.4	1	2	0	8
2012	13	1	1	0	1	3	23	0	67	6.7	4	0	0	7
2013	13	1	1	1	0	3	23	0	33	6.7	2	2	0	7
2014	13	2	1	1	1	5	38	40	40	5.4	1	4	0	10
Mean	6	1	1	1	0	2	28	12	37	4.6	3	1	0	6

Black bear mortality for unit 8bc – North Slope, Daggett/Three Corners, Utah 1998–2014.

Year	Sport harvest							Depredation / other mortality			Total harvest + mortality			
	Permits issued	Spring		Fall		Total	% permits filled	% adult male	% female	Mean age		Male	Female	Unknown
1998	4	—	—	0	0						0	0	—	—
1999	4	—	—	1	0	1	25	—	0	1.0	0	0	0	1
2000	4	—	—	0	0	0	0	—	—	—	2	0	0	2
2001	4	—	—	0	0	0	0	—	—	—	1	0	0	1
2002	4	—	—	0	0	0	0	—	—	—	2	2	0	4
2003	4	—	—	1	0	1	25	—	0	7.0	0	0	0	1
2004	4	—	—	0	0	0	0	—	—	—	1	0	0	1
2005	4	—	—	1	1	2	50	—	50	6.0	0	0	0	2
2006	5	0	0	1	0	1	20	—	0	4.0	0	0	0	1
2007	5	0	0	1	1	2	40	—	50	2.0	0	0	0	2
2008	7	1	0	0	1	2	29	—	50	5.0	0	0	0	2
2009	7	3	0	0	0	3	43	0	0	3.7	0	0	0	3
2010	9	1	0	0	1	2	22	50	50	10.5	0	0	0	2
2011	9	1	0	1	0	2	22	50	0	5.0	0	1	0	3
2012	11	0	2	0	2	4	36	0	100	5.8	0	1	0	5
2013	12	0	0	0	1	1	8	0	100	14.0	0	0	0	1
2014	12	0	1	2	0	3	25	0	33	2.7	1	3	0	7
Mean	6	1	0	0	0	1	22	13	42	5.6	0	0	0	2

Black bear mortality for unit 9 – South Slope (all subunits), Utah 1990–2001.

Year	Sport harvest										Depredation / other mortality			Total harvest + mortality
	Permits issued	Spring		Fall		Unknown	Total	% permits filled	% female	Mean age	Male	Female	Unknown	
1990	16	—	—	2	1						0	3	19	33
1991	16	—	—	4	0	0	4	25	0	—	1	1	0	6
1992	16	—	—	2	1	0	3	19	33	—	4	2	0	9
1993	16	—	—	4	1	0	5	31	20	—	1	0	0	6
1994	16	—	—	3	1	0	4	25	25	—	1	0	0	5
1995	16	—	—	3	2	0	5	31	40	—	6	1	0	12
1996	17	—	—	3	0	0	3	18	0	—	4	2	0	9
1997	18	—	—	1	1	0	2	11	50	—	3	0	0	5
1998	14	—	—	1	2	0	3	21	67	—	3	2	3	11
1999	14	—	—	5	1	0	6	43	17	—	2	1	0	9
2000	14	—	—	4	1	0	5	36	20	—	3	0	0	8
2001	14	—	—	2	2	0	4	29	50	2.6	6	5	1	16
Mean	16	—	—	3	1	0	4	25	28	2.6	3	1	0	9

Black bear mortality for unit 9a – South Slope, Yellowstone, Utah 2002–2014.

Year	Sport harvest							Depredation / other mortality			Total harvest + mortality			
	Permits issued	Spring		Fall		Total	% permits filled	% adult male	% female	Mean age		Male	Female	Unknown
2002	6	—	—	1	1	3*	50	—	33	6.7	0	0	0	3
2003	7	—	—	0	2	2	29	—	100	11.0	0	0	0	2
2004	6	—	—	1	2	3	50	—	67	12.3	1	2	0	6
2005	12	—	—	4	1	5	42	—	20	4.0	0	1	0	6
2006	12	1	0	2	2	5	42	—	40	3.0	1	1	0	7
2007	14	1	0	1	2	4	29	—	50	2.0	3	1	1	9
2008	18	0	3	2	1	6	33	—	67	9.0	0	1	0	7
2009	18	1	0	0	0	1	6	0	0	2.0	0	0	0	1
2010	17	1	1	1	0	3	18	33	33	5.7	3	1	0	7
2011	18	1	0	1	1	3	17	0	33	2.7	1	0	0	4
2012	18	4	1	1	0	6	33	50	17	6.7	3	1	0	10
2013	18	3	0	1	2	6	33	0	33	5.8	0	1	0	7
2014	18	2	2	4	0	8	44	13	25	3.4	4	0	0	12
Mean	14	2	1	1	1	4	30	19	38	5.7	1	1	0	6

\*Includes one harvest of unknown sex.

Black bear mortality for unit 9bcd – South Slope, Vernal/Diamond Mountain/Bonanza, Utah 2002–2014.

Year	Sport harvest										Depredation / other mortality			Total harvest + mortality
	Permits issued	Spring		Fall		Total	% permits filled	% adult male	% female	Mean age	Male	Female	Unknown	
		Male	Female	Male	Female									
2002	10	—	—	0	2	3*	30	—	67	2.7	2	1	0	6
2003	9	—	—	2	2	4	44	—	50	7.3	0	1	1	6
2004	10	—	—	5	2	7	70	—	29	4.6	0	1	0	8
2005	12	—	—	6	1	7	58	—	14	7.3	0	0	0	7
2006	10	3	1	1	1	6	60	—	33	7.8	0	0	0	6
2007	12	3	0	3	2	8	67	—	25	7.8	1	2	0	11
2008	16	6	1	3	0	10	63	—	10	3.7	1	0	0	11
2009	18	2	1	5	1	9	50	56	22	5.3	0	0	0	9
2010	22	2	2	4	3	11	50	27	45	4.3	0	2	0	13
2011	23	5	1	1	0	7	30	29	14	3.9	4	3	0	14
2012	30	5	5	1	2	13	43	38	54	6.2	4	3	0	20
2013	31	4	6	3	2	15	48	13	53	8.0	1	1	0	17
2014	31	7	3	2	4	16	52	31	44	7.0	4	4	0	24
Mean	18	4	2	3	2	9	49	31	36	5.8	1	1	0	12

\*Includes one harvest of unknown sex.



Black bear mortality for unit 10 – Book Cliffs, Utah 1990–2009.

Year	Sport harvest										Depredation / other mortality			Total harvest + mortality
	Permits issued	Spring		Fall		Unknown	Total	% permits filled	% female	Mean age	Male	Female	Unknown	
1990	18	—	—	1	2						0	3	17	67
1991	18	—	—	5	2	0	7	39	29	—	0	0	0	7
1992	18	—	—	5	1	0	6	33	17	—	2	0	0	8
1993	18	—	—	3	4	0	7	39	57	—	0	0	0	7
1994	18	—	—	4	4	0	8	44	50	—	1	0	0	9
1995	18	—	—	11	1	0	12	67	8	—	2	0	0	14
1996	18	—	—	8	2	0	10	56	20	—	1	0	0	11
1997	18	—	—	5	3	0	8	44	38	—	0	0	0	8
1998	30	—	—	3	4	0	7	23	57	—	0	0	0	7
1999	30	—	—	9	1	0	10	33	10	—	1	1	0	12
2000	29	—	—	7	7	0	14	48	50	—	9	3	0	26
2001	15	—	—	5	3	0	8	53	38	6.8	1	0	0	9
2002	25	—	—	7	5	0	12	48	42	7.3	1	0	1	14
2003	25	—	—	4	5	0	9	36	56	8.0	2	0	1	12
2004	25	—	—	10	3	0	13	52	23	5.9	2	2	0	17
2005	30	—	—	5	3	0	8	27	38	7.3	0	0	0	8
2006	15	4	0	1	0	0	5	33	0	7.0	0	0	0	5
2007	15	7	1	1	0	0	9	60	11	10.3	0	0	0	9
2008	19	9	1	3	1	0	14	74	14	7.4	0	0	0	14
2009	23	10	0	0	0	0	10	43	0	8.8	0	0	0	10
Mean	21	8	1	5	3	0	9	42	29	7.6	1	0	0	11

Black bear mortality for unit 10ab – Book Cliffs, Bitter Creek/South, Utah 2010-2014.

Year	Sport harvest										Depredation / other mortality			Total harvest + mortality
	Permits issued	Spring		Fall		Total	% permits filled	% adult male	% female	Mean age	Male	Female	Unknown	
		Male	Female	Male	Female									
2010	23	9	2	1	1	13	57	54	23	8.0	2	2	0	17
2011	28	13	1	0	0	14	50	62	7	4.8	0	0	0	14
2012	36	10	1	3	1	15	44	50	14	7.6	0	0	0	15
2013	36	13	2	5	2	22	61	62	18	6.4	0	1	0	23
2014	35	15	2	2	2	21	60	37	19	5.2	4	0	0	25
Mean	30	12	1	2	1	16	52	57	15	6.8	1	1	0	18

Black bear mortality for unit 10c – Book Cliffs, Little Creek, Utah 2010-2014.

Year	Sport harvest										Depredation / other mortality			Total harvest + mortality
	Permits issued	Spring		Fall		Total	% permits filled	% adult male	% female	Mean age	Male	Female	Unknown	
		Male	Female	Male	Female									
2010	7	2	0	1	0	3	43	100	0	9.7	0	0	0	3
2011	9	0	0	0	0	0	0	—	—	—	0	0	0	0
2012	10	2	0	1	0	3	30	100	0	10.7	0	0	0	3
2013	10	3	0	1	1	5	50	60	20	7.6	0	0	0	5
2014	10	3	0	0	0	3	30	67	0	5.7	1	0	0	4
Mean	9	2	0	1	0	3	30	79	7	8.4	0	0	0	3

Black bear mortality for unit 11 – Nine Mile, Utah 1990–2014.

Year	Sport harvest							Depredation / other mortality			Total harvest + mortality			
	Permits issued	Spring		Fall		Total	% permits filled	% adult male	% female	Mean age		Male	Female	Unknown
1990	44	—	—	14	0	14	32	—	0	—	6	0	0	20
1991	22	—	—	3	2	5	23	—	40	—	1	1	0	7
1992	22	—	—	6	0	6	27	—	0	—	4	1	0	11
1993	27	—	—	0	4	4	15	—	100	—	0	0	0	4
1994	27	—	—	3	7	10	37	—	70	—	4	2	0	16
1995	24	—	—	3	4	7	29	—	57	—	3	3	0	13
1996	24	—	—	6	6	12	50	—	50	—	5	2	0	19
1997	20	—	—	2	2	4	20	—	50	—	1	0	0	5
1998	20	—	—	4	1	5	25	—	20	—	0	0	0	5
1999	20	—	—	2	1	3	15	—	33	—	0	0	0	3
2000	20	—	—	4	4	8	40	—	50	—	9	0	0	17
2001	15	3	0	—	—	3	20	—	0	8.3	1	0	0	4
2002	20	7	0	—	—	7	35	—	0	5.0	2	3	0	12
2003	20	7	2	—	—	9	45	—	22	12.0	0	0	0	9
2004	20	7	2	—	—	9	45	—	22	7.6	6	4	0	19
2005	20	2	0	—	—	2	10	—	0	6.5	0	0	0	2
2006	22	4	1	1	0	6	27	—	17	9.0	0	0	1	7
2007	26	4	4	1	2	11	42	—	55	6.1	2	3	0	16
2008	29	5	2	1	1	10*	34	—	30	7.6	1	0	0	11
2009	34	9	3	2	3	17	50	50	35	6.9	1	3	0	21
2010	40	5	0	3	4	12	30	25	33	5.0	0	0	0	12
2011	44	2	0	8	2	12	27	70	17	5.9	0	0	0	12
2012	52	7	1	2	3	13	25	23	31	5.7	1	0	0	14
2013	54	7	0	4	3	14	26	50	21	6.6	0	1	0	15
2014	44	12	4	6	4	26	59	38	31	5.2	9	2	1	38
Mean	28	6	1	4	3	9	33	42	31	7.0	2	1	0	12

\*Includes one harvest of unknown sex.

Black bear mortality for unit 13 – La Sal, Utah 1990–2014.

Year	Sport harvest							Depredation / other mortality			Total harvest + mortality			
	Permits issued	Spring		Fall		Total	% permits filled	% adult male	% female	Mean age		Male	Female	Unknown
1990	10	—	—	1	0	1	10	—	0	—	2	0	0	3
1991	10	—	—	6	1	7	70	—	14	—	1	0	0	8
1992	10	—	—	1	1	2	20	—	50	—	1	0	0	3
1993	12	—	—	4	1	5	42	—	20	—	0	0	0	5
1994	12	—	—	8	0	8	67	—	0	—	0	0	0	8
1995	12	—	—	3	3	6	50	—	50	—	0	0	0	6
1996	16	—	—	6	5	11	69	—	45	—	2	0	0	13
1997	20	—	—	6	8	14	70	—	57	—	6	0	0	20
1998	20	—	—	6	5	11	55	—	45	—	0	0	1	12
1999	20	—	—	5	4	9	45	—	44	—	0	0	0	9
2000	19	—	—	4	6	10	53	—	60	—	2	0	0	12
2001	30	13	3	—	—	16	53	—	19	8.1	2	0	0	18
2002	30	17	4	—	—	21	70	—	19	6.9	3	0	0	24
2003	30	13	5	—	—	18	60	—	28	9.0	1	0	0	19
2004	30	12	3	—	—	15	50	—	20	7.9	0	1	0	16
2005	30	8	2	—	—	10	33	—	20	7.0	0	3	0	13
2006	30	4	6	2	0	12	40	—	50	8.3	0	0	0	12
2007	30	14	4	3	4	25	83	—	32	4.6	0	0	0	25
2008	32	9	5	5	3	22	69	—	36	6.0	2	1	0	25
2009	36	12	5	3	2	22	61	33	32	5.5	0	0	0	22
2010	40	11	4	2	4	21	53	42	38	7.4	2	0	0	23
2011	50	13	5	7	2	27	54	48	26	5.7	0	1	0	28
2012	78	14	8	5	7	34	44	32	44	6.0	1	0	0	35
2013	79	20	4	3	7	34	43	44	32	6.3	1	0	0	35
2014	79	21	4	6	7	38	48	38	29	5.1	6	2	0	46
Mean	31	13	4	4	4	16	52	40	33	6.7	1	0	0	18

Black bear mortality for unit 14 – San Juan, Utah 1990–2014.

Year	Sport harvest							Depredation / other mortality			Total harvest + mortality			
	Permits issued	Spring		Fall		Total	% permits filled	% adult male	% female	Mean age		Male	Female	Unknown
1990	16	—	—	4	1	5	31	—	20	—	0	0	0	5
1991	16	—	—	3	0	3	19	—	0	—	0	0	0	3
1992	16	—	—	3	0	3	19	—	0	—	1	0	0	4
1993	16	—	—	0	4	4	25	—	100	—	0	0	0	4
1994	16	—	—	4	0	4	25	—	0	—	0	0	0	4
1995	16	—	—	5	4	9	56	—	44	—	0	1	0	10
1996	20	—	—	9	6	15	75	—	40	—	2	1	0	18
1997	20	—	—	4	3	7	35	—	43	—	2	0	0	9
1998	20	—	—	6	3	10*	50	—	30	—	0	0	0	10
1999	20	—	—	4	1	5	25	—	20	—	0	0	0	5
2000	19	—	—	9	2	11	58	—	18	—	2	0	0	13
2001	30	—	—	12	7	20*	67	—	35	7.3	4	3	0	27
2002	30	—	—	10	5	15	50	—	33	8.1	3	0	0	18
2003	30	—	—	10	3	13	43	—	23	7.4	0	0	0	13
2004	30	—	—	18	1	19	63	—	5	8.4	0	0	0	19
2005	30	—	—	8	6	14	47	—	43	9.1	1	2	0	17
2006	29	8	6	2	1	17	59	—	41	9.3	2	1	0	20
2007	34	9	2	8	1	20	59	—	15	7.7	0	0	0	20
2008	34	12	2	6	3	23	68	—	22	6.1	1	0	0	24
2009	35	5	7	3	3	18	51	39	56	8.2	1	0	0	19
2010	40	11	5	4	4	24	60	45	38	6.2	0	1	0	25
2011	50	21	4	6	1	32	64	61	16	6.1	3	2	0	37
2012	78	19	6	8	4	37	47	54	27	6.8	1	1	0	39
2013	79	20	5	5	9	39	49	46	36	6.7	4	2	0	45
2014	79	22	5	12	2	41	52	58	17	6.3	0	0	0	41
Mean	32	14	5	7	3	16	51	52	28	7.4	1	1	0	18

\*Includes one harvest of unknown sex.

Black bear mortality for unit 16a – Central Mountains, Nebo, Utah 1990–2014.

Year	Sport harvest										Depredation / other mortality			Total harvest + mortality
	Permits issued	Spring		Fall		Total	% permits filled	% adult male	% female	Mean age	Male	Female	Unknown	
Male	Female	Male	Female											
1990	3	—	—	0	0	0	0	—	—	—	2	0	0	2
1991	3	—	—	0	0	0	0	—	—	—	0	0	0	0
1992	3	—	—	0	0	0	0	—	—	—	0	0	0	0
1993	6	—	—	0	0	0	0	—	—	—	0	0	0	0
1994	6	—	—	0	0	0	0	—	—	—	1	0	0	1
1995	6	—	—	0	0	0	0	—	—	—	3	0	0	3
1996	6	—	—	0	0	0	0	—	—	—	0	0	0	0
1997	6	—	—	0	0	0	0	—	—	—	1	0	0	1
1998	6	—	—	1	0	1	17	—	0	—	0	0	0	1
1999	6	—	—	1	1	2	33	—	50	—	0	0	0	2
2000	6	—	—	2	1	3	50	—	33	—	1	0	0	4
2001	6	—	—	0	1	2*	33	—	50	2.5	0	0	0	2
2002	6	—	—	2	1	3	50	—	33	6.0	1	0	1	5
2003	8	—	—	4	0	4	50	—	0	3.0	1	0	0	5
2004	8	—	—	2	1	3	38	—	33	3.5	1	0	0	4
2005	8	—	—	5	0	5	63	—	0	1.8	0	1	0	6
2006	9	1	0	0	1	2	22	—	50	6.0	0	0	0	2
2007	8	2	1	2	1	6	75	—	33	4.0	1	2	0	9
2008	12	2	1	3	0	6	50	—	17	3.5	1	2	0	9
2009	12	3	0	0	0	3	25	67	0	7.3	3	2	1	9
2010	14	4	2	0	0	6	43	50	33	7.5	2	1	0	9
2011	17	2	4	1	3	10	59	0	70	5.6	3	1	0	14
2012	21	6	2	1	1	10	48	10	30	5.3	2	1	1	14
2013	21	7	3	4	0	14	67	21	21	3.6	2	2	0	18
2014	21	4	9	1	1	15	71	8	67	4.0	0	1	0	16
Mean	9	3	2	1	0	4	42	18	36	4.5	1	1	0	5

\*Includes one harvest of unknown sex.

Black bear mortality for unit 16b – Central Mountains, Manti-North, Utah 1990–2014.

Year	Sport harvest							Depredation / other mortality			Total harvest + mortality			
	Permits issued	Spring		Fall		Total	% permits filled	% adult male	% female	Mean age		Male	Female	Unknown
1990	16	—	—	1	0	1	6	—	0	—	3	1	0	5
1991	16	—	—	2	0	2	13	—	0	—	2	2	0	6
1992	16	—	—	2	0	2	13	—	0	—	4	7	0	13
1993	20	—	—	0	2	2	10	—	100	—	1	1	0	4
1994	22	—	—	0	0	0	0	—	—	—	1	0	0	1
1995	22	—	—	2	0	2	9	—	0	—	1	3	0	6
1996	21	—	—	1	2	3	14	—	67	—	6	0	0	9
1997	21	—	—	2	2	4	19	—	50	—	5	3	0	12
1998	20	—	—	0	1	1	5	—	100	—	4	0	1	6
1999	25	—	—	3	3	6	24	—	50	—	2	5	0	13
2000	25	—	—	1	3	4	16	—	75	—	3	0	0	7
2001	22	—	—	1	5	6	27	—	83	3.5	5	0	0	11
2002	16	—	—	1	3	5*	31	—	60	10.0	1	1	2	9
2003	16	—	—	0	1	1	6	—	100	5.0	2	0	0	3
2004	16	—	—	4	1	5	31	—	20	3.0	6	1	0	12
2005	16	—	—	7	0	7	44	—	0	3.7	1	1	0	9
2006	16	1	2	2	0	5	31	—	40	2.4	1	0	0	6
2007	15	7	0	2	0	9	60	—	0	4.0	4	2	0	15
2008	17	4	1	1	1	7	41	—	29	4.0	0	0	0	7
2009	17	3	2	2	0	7	41	43	29	5.0	4	6	0	17
2010	19	2	2	1	0	5	26	20	40	5.8	9	5	0	19
2011	23	3	3	1	1	8	35	25	50	6.3	6	0	0	14
2012	28	6	6	1	1	14	50	8	50	3.6	5	3	0	22
2013	29	9	2	2	1	14	48	29	21	5.3	2	2	0	18
2014	29	9	2	2	2	15	52	20	27	4.4	6	3	0	24
Mean	20	5	2	2	1	5	27	23	36	4.7	3	2	0	11

\*Includes one harvest of unknown sex.

Black bear mortality for unit 16c – Central Mountains, Manti-South, Utah 1990–2014.

Year	Sport harvest							Depredation / other mortality			Total harvest + mortality			
	Permits issued	Spring		Fall		Total	% permits filled	% adult male	% female	Mean age		Male	Female	Unknown
1990	17	—	—	2	0	2	12	—	0	—	0	0	0	2
1991	17	—	—	1	2	3	18	—	67	—	0	0	0	3
1992	17	—	—	4	1	5	29	—	20	—	1	1	0	7
1993	18	—	—	2	2	4	22	—	50	—	0	0	0	4
1994	20	—	—	0	0	0	0	—	—	—	0	0	0	0
1995	20	—	—	1	0	1	5	—	0	—	0	1	0	2
1996	20	—	—	2	2	4	20	—	50	—	1	0	0	5
1997	20	—	—	1	1	2	10	—	50	—	1	1	0	4
1998	16	—	—	3	0	3	19	—	0	—	1	3	0	7
1999	20	—	—	1	0	1	5	—	0	—	1	1	0	3
2000	20	—	—	2	1	3	15	—	33	—	10	2	0	15
2001	18	—	—	2	1	3	17	—	33	5.0	7	2	0	12
2002	12	—	—	1	0	1	8	—	0	3.0	2	2	0	5
2003	12	—	—	3	0	3	25	—	0	7.3	1	1	1	6
2004	12	—	—	3	1	4	33	—	25	3.0	5	3	0	12
2005	11	—	—	4	0	4	36	—	0	2.8	1	1	0	6
2006	11	3	1	1	1	6	55	—	33	4.0	3	1	0	10
2007	11	2	2	2	1	7	64	—	43	4.3	1	1	2	11
2008	12	1	1	0	1	3	25	—	67	5.3	1	0	0	4
2009	12	2	5	2	0	9	75	22	56	6.8	4	2	0	15
2010	13	4	0	3	3	10	77	30	30	4.1	1	3	2	16
2011	13	3	0	4	1	8	62	25	13	3.9	1	1	0	10
2012	16	3	1	6	2	12	75	42	25	6.3	2	2	0	16
2013	16	2	1	4	2	9	56	0	33	5.1	3	1	0	13
2014	16	2	1	8	1	12	75	20	17	3.6	2	4	1	19
Mean	16	2	1	2	1	5	31	24	29	4.6	2	1	0	8



Black bear mortality for unit 17 – Wasatch Mountains (all subunits), Utah 1990–2000.

Year	Sport harvest										Depredation / other mortality			Total harvest + mortality
	Permits issued	Spring		Fall		Unknown	Total	% permits filled	% female	Mean age	Male	Female	Unknown	
		Male	Female	Male	Female									
1990	26	—	—	7	0	0	7	27	0	—	6	4	0	17
1991	11	—	—	1	0	0	1	9	0	—	2	0	0	3
1992	11	—	—	1	1	0	2	18	50	—	0	0	0	2
1993	14	—	—	1	2	0	3	21	67	—	1	1	0	5
1994	14	—	—	2	1	0	3	21	33	—	0	2	0	5
1995	14	—	—	2	0	0	2	14	0	—	3	2	0	7
1996	14	—	—	2	3	0	5	36	60	—	9	0	0	14
1997	10	—	—	1	1	0	2	20	50	—	2	0	0	4
1998	26	—	—	0	1	0	1	4	100	—	9	1	4	15
1999	35	—	—	5	2	0	7	20	29	—	5	2	6	20
2000	34	—	—	4	2	0	6	18	33	—	17	0	0	23
Mean	19	—	—	2	1	0	4	19	33	—	5	1	1	10

Black bear mortality for unit 17a – Wasatch Mountains, West, Utah 2001–2014.

Year	Sport harvest							Depredation / other mortality			Total harvest + mortality			
	Permits issued	Spring		Fall		Total	% permits filled	% adult male	% female	Mean age		Male	Female	Unknown
2001	20	1	0	—	—	1	5	—	0	12.0	3	2	0	6
2002	20	4	2	—	—	6	30	—	33	8.2	7	9	2	24
2003	20	5	5	—	—	10	50	—	50	—	6	0	0	16
2004	20	5	0	—	—	5	25	—	0	5.0	3	4	2	14
2005	19	3	1	—	—	4	21	—	25	5.3	6	4	1	15
2006	19	4	0	2	1	7	37	—	14	3.9	4	4	1	16
2007	22	1	2	2	1	6	27	—	50	8.2	10	6	5	27
2008	27	3	5	1	1	10	37	—	60	7.4	3	2	3	18
2009	28	6	4	1	0	11	39	20	36	4.3	12	4	0	27
2010	34	8	5	2	2	17	50	12	41	4.1	7	0	0	24
2011	42	8	4	2	1	15	36	0	33	4.5	6	6	0	27
2012	52	7	8	2	6	23	44	10	61	4.2	6	6	0	35
2013	55	13	5	3	2	23	42	17	30	4.0	11	2	0	36
2014	55	16	10	5	2	33	60	21	36	4.7	13	9	0	55
Mean	31	6	4	2	2	12	39	15	39	5.8	7	4	1	24

Black bear mortality for unit 17bc – Wasatch Mountains, Currant Creek/Avintaquin, Utah 2001–2014.

Year	Sport harvest										Depredation / other mortality			Total harvest + mortality
	Permits issued	Spring		Fall		Total	% permits filled	% adult male	% female	Mean age	Male	Female	Unknown	
		Male	Female	Male	Female									
2001	14	0	0	—	—	0	0	—	—	—	0	0	0	0
2002	14	2	0	—	—	2	14	—	0	3.0	3	6	2	13
2003	14	2	0	—	—	2	14	—	0	—	3	2	0	7
2004	14	6	2	—	—	8	57	—	25	2.6	3	1	0	12
2005	14	1	0	—	—	1	7	—	0	2.0	1	1	0	3
2006	16	1	0	1	1	3	19	—	33	3.7	6	5	3	17
2007	16	0	1	0	2	3	19	—	100	2.3	8	2	0	13
2008	20	3	0	1	1	5	25	—	20	7.8	1	0	2	8
2009	24	4	4	2	1	11	46	9	45	4.9	4	2	0	17
2010	24	3	1	2	0	6	25	50	17	4.3	2	1	0	9
2011	24	3	0	0	1	4	17	25	25	5.3	3	1	0	8
2012	19	5	6	1	0	12	63	8	50	5.3	3	1	1	17
2013	19	3	3	4	0	10	53	25	30	3.6	1	1	0	12
2014	20	5	2	2	1	10	50	30	30	4.9	1	1	0	12
Mean	18	3	1	1	1	6	31	22	34	4.1	3	2	1	11

Black bear mortality for unit 21b – Fillmore, Pahvant, Utah 2012–2014.

Year	Sport harvest										Depredation / other mortality			Total harvest + mortality
	Permits issued	Spring		Fall		Total	% permits filled	% adult male	% female	Mean age	Male	Female	Unknown	
		Male	Female	Male	Female									
2012	2	0	0	0	0	0	0	—	—	—	0	0	0	0
2013	2	0	0	0	0	0	0	—	—	—	0	0	0	0
2014	2	0	0	0	0	0	0	—	—	—	0	0	0	0
Mean	2	0	0	0	0	0	0	—	—	—	0	0	0	0

Black bear mortality for unit 22 –Beaver, Utah 1990–2014.

Year	Sport harvest										Depredation / other mortality			Total harvest + mortality
	Permits issued	Spring		Fall		Total	% permits filled	% adult male	% female	Mean age	Male	Female	Unknown	
Male	Female	Male	Female											
1990	1	—	—	0	0	0	0	—	—	—	0	0	0	0
1991	1	—	—	0	0	0	0	—	—	—	0	0	0	0
1992	1	—	—	0	0	0	0	—	—	—	0	0	0	0
1993	1	—	—	0	0	0	0	—	—	—	0	0	0	0
1994	1	—	—	0	0	0	0	—	—	—	0	0	0	0
1995	1	—	—	1	0	1	100	—	0	—	0	0	0	1
1996	1	—	—	0	0	0	0	—	—	—	0	0	0	0
1997	1	—	—	0	0	0	0	—	—	—	0	0	0	0
1998	1	—	—	0	0	0	0	—	—	—	0	0	0	0
1999	1	—	—	0	0	0	0	—	—	—	0	0	0	0
2000	1	—	—	0	0	0	0	—	—	—	0	0	0	0
2001	1	—	—	1	0	1	100	—	0	5.0	0	0	0	1
2002	1	—	—	0	0	0	0	—	—	—	1	2	0	3
2003	1	—	—	0	0	0	0	—	—	—	0	0	0	0
2004	1	—	—	1	0	1	100	—	0	7.0	0	0	0	1
2005	1	—	—	0	1	1	100	—	100	13.0	0	0	0	1
2006	2	1	0	0	0	1	50	—	0	4.0	0	0	0	1
2007	2	0	0	0	0	0	0	—	—	—	1	1	0	2
2008	6	2	1	0	0	3	50	—	33	7.7	1	1	0	5
2009	10	3	1	3	0	7	70	86	14	9.4	1	0	0	8
2010	15	2	0	1	1	4	27	50	25	5.0	0	0	0	4
2011	15	1	0	1	1	3	20	67	33	7.0	1	1	0	5
2012	27	6	0	0	2	8	30	50	25	7.5	0	0	0	8
2013	27	2	2	2	3	9	33	22	56	9.2	1	0	0	10
2014	27	1	2	3	2	8	30	14	50	7.3	0	1	0	9
Mean	6	2	1	1	0	2	32	45	34	7.5	0	0	0	2

\*Included unit 21b, Fillmore, Pahvant, from 2008-2011.

Black bear mortality for unit 23 - Monroe, Utah 1990–2014.

Year	Sport harvest										Depredation / other mortality			Total harvest + mortality
	Permits issued	Spring		Fall		Total	% permits filled	% adult male	% female	Mean age	Male	Female	Unknown	
Male	Female	Male	Female											
1990	1	—	—	0	0	0	0	—	—	—	0	0	0	0
1991	1	—	—	0	0	0	0	—	—	—	0	0	0	0
1992	1	—	—	0	0	0	0	—	—	—	0	0	0	0
1993	1	—	—	0	0	0	0	—	—	—	1	0	0	1
1994	1	—	—	0	0	0	0	—	—	—	0	0	0	0
1995	1	—	—	0	0	0	0	—	—	—	0	0	0	0
1996	1	—	—	0	0	0	0	—	—	—	0	0	0	0
1997	1	—	—	0	0	0	0	—	—	—	0	0	0	0
1998	1	—	—	0	0	0	0	—	—	—	0	0	0	0
1999	1	—	—	0	0	0	0	—	—	—	0	0	0	0
2000	1	—	—	0	0	0	0	—	—	—	0	0	0	0
2001	1	—	—	0	0	0	0	—	—	—	0	0	0	0
2002	1	—	—	0	0	0	0	—	—	—	0	0	0	0
2003	1	—	—	0	0	0	0	—	—	—	0	0	0	0
2004	1	—	—	0	0	0	0	—	—	—	0	0	0	0
2005	1	—	—	0	0	0	0	—	—	—	0	0	0	0
2006	0	—	—	—	—	—	—	—	—	—	0	0	0	0
2007	1	0	0	0	0	0	0	—	—	—	0	0	0	0
2008	2	0	0	0	0	0	0	—	—	—	0	0	0	0
2009	2	0	0	0	0	0	0	—	—	—	0	1	0	1
2010	2	0	0	0	0	0	0	—	—	—	0	0	0	0
2011	2	0	0	0	0	0	0	—	—	—	0	0	0	0
2012	1	0	0	1	0	1	100	0	0	2.0	0	0	0	1
2013	1	0	0	1	0	1	100	0	0	3.0	0	0	0	1
2014	1	0	0	1	0	1	100	100	0	6.0	0	0	0	1
Mean	1	0	0	0	0	0	11	33	0	3.7	0	0	0	0

\*Unit was pursuit only during 2006.

Black bear mortality for unit 24 – Mt. Dutton, Utah 2008–2014.

Year	Sport harvest										Depredation / other mortality			Total harvest + mortality
	Permits issued	Spring		Fall		Total	% permits filled	% adult male	% female	Mean age	Male	Female	Unknown	
		Male	Female	Male	Female									
2008	2	1	0	0	0	1	50	—	0	7.0	1	0	0	2
2009	2	0	0	0	0	0	0	—	—	—	1	0	0	1
2010	2	0	0	1	0	1	50	100	0	9.0	1	0	0	2
2011	3	0	0	1	0	1	33	100	0	5.0	0	0	0	1
2012	3	0	0	0	0	0	0	—	—	—	0	0	0	0
2013	3	0	0	0	0	0	0	—	—	—	0	0	0	0
2014	3	1	0	1	0	2	67	50	0	4.5	1	0	0	3
Mean	3	0	0	0	0	1	28	75	0	6.4	1	0	0	1

Black bear mortality for unit 25ab – Plateau, Fishlake/Thousand Lakes, Utah 1990–2014.

Year	Sport harvest										Depredation / other mortality			Total harvest + mortality
	Permits issued	Spring		Fall		Total	% permits filled	% adult male	% female	Mean age	Male	Female	Unknown	
		Male	Female	Male	Female									
1990	3	—	—	0	0	0	0	—	—	—	0	0	0	0
1991	3	—	—	1	0	1	33	—	0	—	0	0	0	1
1992	3	—	—	1	0	1	33	—	0	—	0	0	0	1
1993	3	—	—	1	0	1	33	—	0	—	1	0	0	2
1994	3	—	—	0	0	0	0	—	—	—	2	1	0	3
1995	4	—	—	2	1	3	75	—	33	—	1	1	0	5
1996	4	—	—	1	2	3	75	—	67	—	0	0	0	3
1997	4	—	—	3	0	3	75	—	0	—	0	0	0	3
1998	4	—	—	1	0	1	25	—	0	—	0	0	0	1
1999	4	—	—	1	0	1	25	—	0	—	0	0	0	1
2000	4	—	—	0	0	0	0	—	—	—	0	0	0	0
2001	4	—	—	0	0	0	0	—	—	—	1	1	0	2
2002	4	—	—	0	1	1	25	—	100	2.0	0	0	0	1
2003	4	—	—	3	0	3	75	—	0	5.3	1	0	0	4
2004	6	—	—	0	2	2	33	—	100	11.5	0	0	0	2
2005	6	—	—	2	0	2	33	—	0	7.0	1	0	0	3
2006	6	0	0	0	0	0	0	—	—	—	0	0	0	0
2007	6	1	0	0	0	1	17	—	0	6.0	0	0	0	1
2008	6	1	0	0	0	1	17	—	0	3.0	0	0	0	1
2009	6	2	0	0	0	2	33	50	0	5.5	0	0	0	2
2010	6	0	0	1	0	1	17	0	0	4.0	1	0	0	2
2011	6	2	0	1	1	4	67	0	25	3.8	0	0	0	4
2012	7	1	1	1	0	3	43	0	33	3.7	0	0	0	3
2013	7	2	0	1	0	3	43	0	0	2.3	0	0	0	3
2014	7	2	0	1	0	3	43	50	0	5.5	0	0	0	3
Mean	5	1	0	1	0	2	33	13	20	5.0	0	0	0	2

Black bear mortality for unit 25c – Plateau, Boulder, Utah 1990–2003.

Year	Sport harvest							Depredation / other mortality			Total harvest + mortality			
	Permits issued	Spring		Fall		Unknown	Total	% permits filled	% female	Mean age		Male	Female	Unknown
1990	3	—	—	0	0	0	0	0	—	—	1	0	0	1
1991	3	—	—	0	1	0	1	33	100	—	0	0	0	1
1992	3	—	—	1	0	0	1	33	0	—	0	0	0	1
1993	4	—	—	2	0	0	2	50	0	—	0	2	0	4
1994	5	—	—	0	1	0	1	20	100	—	2	2	0	5
1995	6	—	—	3	2	0	5	83	40	—	1	0	0	6
1996	8	—	—	2	2	0	4	50	50	—	3	0	0	7
1997	8	—	—	2	1	0	3	38	33	—	0	0	0	3
1998	8	—	—	1	1	0	2	25	50	—	2	0	0	4
1999	8	—	—	2	2	0	4	50	50	—	1	0	0	5
2000	8	—	—	3	1	0	4	50	25	—	0	0	0	4
2001	8	—	—	1	2	0	3	38	67	7.6	1	0	1	5
2002	8	—	—	1	2	0	3	38	67	3.0	1	0	0	4
2003	8	—	—	3	0	0	3	38	0	5.0	1	3	0	7
Mean	6	—	—	2	1	0	3	42	41	5.2	1	1	0	4

Black bear mortality for unit 26 - Kaiparowits, Utah 2000–2003.

Year	Sport harvest							Depredation / other mortality			Total harvest + mortality			
	Permits issued	Spring		Fall		Unknown	Total	% permits filled	% female	Mean age		Male	Female	Unknown
2000	1	—	—	1	0	0	1	100	0	4.0	0	0	0	1
2001	1	—	—	0	0	0	0	0	—	—	0	0	0	0
2002	1	—	—	0	0	0	0	0	—	—	3	0	0	3
2003	1	—	—	0	1	0	1	100	100	13.0	0	0	0	1
Mean	1	—	—	0	0	0	1	50	50	8.5	0	0	0	1



Black bear mortality for units 25c/26 – Plateau, Boulder/Kaiparowits, Utah 2004–2014.

Year	Sport harvest										Depredation / other mortality			Total harvest + mortality
	Permits issued	Spring		Fall		Total	% permits filled	% adult male	% female	Mean age	Male	Female	Unknown	
2004	17	—	—	6	2	8	47	—	25	8.3	2	0	2	12
2005	17	—	—	2	2	4	24	—	50	4.8	1	1	1	7
2006	16	0	1	5	0	6	38	—	17	7.0	0	4	1	11
2007	22	7	1	3	0	11	50	—	9	7.1	6	0	0	17
2008	25	2	2	4	2	10	40	—	40	7.4	0	0	0	10
2009	25	6	0	5	2	13	52	54	15	5.8	4	0	0	17
2010	29	3	4	4	0	11	38	55	36	6.4	0	0	0	11
2011	33	5	0	2	2	9	27	63	22	8.5	0	1	0	10
2012	40	10	1	4	1	16	40	31	13	4.8	0	0	0	16
2013	42	4	3	4	3	14	33	43	43	5.9	0	0	0	14
2014	42	6	5	5	2	18	43	22	39	6.5	0	0	0	18
Mean	28	5	2	4	1	11	39	41	28	6.6	1	1	0	13

Black bear mortality for unit 27 - Paunsaugunt, Utah 2003–2014.

Year	Sport harvest										Depredation / other mortality			Total harvest + mortality
	Permits issued	Spring		Fall		Total	% permits filled	% adult male	% female	Mean age	Male	Female	Unknown	
Male	Female	Male	Female											
2003	1	—	—	0	0	0	0	—	—	—	0	0	0	0
2004	1	—	—	0	0	0	0	—	—	—	0	1	0	1
2005	2	—	—	1	0	1	50	—	0	3.0	0	0	0	1
2006	2	0	1	0	0	1	50	—	100	—	0	0	0	1
2007	2	0	0	0	0	0	0	—	—	—	0	0	0	0
2008	2	0	0	0	0	0	0	—	—	—	0	0	0	0
2009	2	1	0	0	0	1	50	100	0	8.0	1	0	0	2
2010	3	0	0	1	0	1	33	100	0	5.0	0	1	0	2
2011	3	2	0	1	0	3	100	100	0	9.7	0	0	0	3
2012	4	1	1	1	0	3	75	33	33	3.7	0	0	0	3
2013	4	0	0	0	0	0	0	—	—	—	0	0	0	0
2014	4	1	0	0	1	2	50	0	50	7.5	2	0	0	4
Mean	3	1	0	0	0	1	40	60	25	6.1	0	0	0	1

Black bear mortality for units 28/29 – Panguitch Lake/Zion, Utah 1990–2014.

Year	Sport harvest							Depredation / other mortality			Total harvest + mortality			
	Permits issued	Spring		Fall		Total	% permits filled	% adult male	% female	Mean age		Male	Female	Unknown
1990	3	—	—	0	0	0	0	—	—	—	1	0	0	1
1991	3	—	—	1	0	1	33	—	0	—	2	0	0	3
1992	3	—	—	0	0	0	0	—	—	—	2	0	0	2
1993	3	—	—	0	0	0	0	—	—	—	0	0	0	0
1994	4	—	—	1	0	1	25	—	0	—	1	0	0	2
1995	8	—	—	1	0	1	13	—	0	—	1	1	0	3
1996	8	—	—	0	0	0	0	—	—	—	4	0	0	4
1997	8	—	—	0	0	0	0	—	—	—	0	0	0	0
1998	8	—	—	0	0	0	0	—	—	—	1	0	0	1
1999	8	—	—	0	1	1	13	—	100	5.7	2	0	0	3
2000	6	—	—	0	0	0	0	—	—	—	0	0	0	0
2001	6	—	—	0	1	1	17	—	100	19.0	0	1	0	2
2002	6	—	—	0	1	1	17	—	100	11.0	5	0	0	6
2003	11	—	—	1	1	2	18	—	50	5.3	2	0	0	4
2004	12	—	—	2	0	2	17	—	0	8.0	3	0	0	5
2005	12	—	—	0	0	0	0	—	—	—	2	1	0	3
2006	11	0	1	0	0	1	9	—	100	4.0	0	0	0	1
2007	10	0	1	1	0	2	20	—	50	3.5	0	0	0	2
2008	11	2	0	2	0	5*	40	—	45	5.8	0	0	2	7
2009	11	2	0	1	0	3	27	100	0	5.5	0	0	1	4
2010	11	2	0	3	1	6	55	67	17	6.7	0	0	0	6
2011	13	3	0	2	1	6	46	25	17	5.8	0	0	0	6
2012	16	2	0	1	0	3	19	50	0	4.0	0	0	0	3
2013	16	1	2	2	0	5	31	20	40	5.8	0	0	0	5
2014	16	2	0	1	0	3	19	0	0	2.7	1	0	0	4
Mean	9	2	0	1	0	2	20	41	23	6.6	1	0	0	3

\*Includes one harvest of unknown sex.