

UTAH DIVISION OF WILDLIFE RESOURCES

BIG GAME

A P P L I C A T I O N

— GUIDEBOOK —



2024

CONTACT US

Turn in a poacher

Phone: 800-662-3337

Text: 847411

Online: wildlife.utah.gov/utip

Division offices

Offices are open 8 a.m.–5 p.m.,
Monday through Friday.

Salt Lake City

1594 W North Temple
Box 146301
Salt Lake City, UT 84114-6301
801-538-4700

Central Region

1115 N Main Street
Springville, UT 84663
801-491-5678

Northeastern Region

318 N Vernal Avenue
Vernal, UT 84078
435-781-9453

Northern Region

515 E 5300 S
Ogden, UT 84405
801-476-2740

Southeastern Region

319 N Carbonville Road, Ste A
Price, UT 84501
435-613-3700

Southern Region

1470 N Airport Road
Cedar City, UT 84721
435-865-6100

Washington County Field Office

451 N SR-318
Hurricane, UT 84737
435-879-8694

CONTENTS

- 4 Keep your license on your phone or tablet**
- 5 Antlerless big game hunting**
- 7 2024 season dates**
- 9 2025 sportsman permits**
- 10 Permit sales dates**
- 11 Trail camera regulations and night-vision device rules**
- 13 Gathering shed antlers or horns**
- 14 License, permit and program fees**
- 16 Basic requirements**
- 16 Utah's Trial Hunting Program**
- 17 Carry your permit**
- 18 Prepare to apply**
- 19 Review the hunt tables**
- 19 See maps and boundaries online**
- 19 Obtain permission to hunt private property**
- 19 Understand the drawing order**
- 20 Why bonus points matter**
- 20 Hunter Mentoring Program**
- 21 Why preference points matter**
- 22 Multi-season hunts for deer and elk**
- 23 Obtain up to three elk permits**
- 24 Mandatory reporting**
- 24 Hunts with special circumstances**
- 28 Apply for big game permits**
- 30 After you apply**
- 33 Dedicated Hunter program**
- 34 Opportunities for young hunters**
- 36 Hunt maps**
- 42 Hunt tables**
- 68 CWMU hunts**
- 78 Definitions**

On the cover: Bull moose near Wolf Creek Ranch, Wasatch County, Utah. Photograph by Jim Shuler.



WHAT'S NEW

Apply for hunts: You can apply for Utah's 2024 big game hunts from March 21 to April 25, 2024. The results of the big game drawing will be available on May 16, 2024. For additional details, see page 28.

Permit sales dates in July: Any permits remaining after the big game drawing will go on sale during different days in July. For all of the permit sales dates, see the table on page 10.

New harvest survey requirements: The Utah Wildlife Board voted to require mandatory harvest reporting for all of the general-season buck deer and bull elk hunts beginning in 2024. (All limited-entry, once-in-a-lifetime and antlerless hunts still require harvest reporting, as well.) Filing a report is required, even if a hunter does not harvest an animal. All permit holders will have 30 days to report the results of their hunt after their hunting season ends; failure to report will result in exclusion from the 2025 big game and antlerless applications. For details about how to report, reporting requirements, restrictions and potential fines, see page 24 or visit wildlife.utah.gov/harvestreporting.

Muzzleloader technology restrictions: The board also approved prohibiting the use of scopes stronger than 1x power on muzzleloaders for all muzzleloader hunts (general-season, limited-entry and management). Only open sights, peep sights, a red dot, or scopes with 1x power or less will be allowed on muzzleloaders during muzzleloader hunt seasons. Scopes of any power are allowed on muzzleloaders during any-legal-weapon hunts.

Archery technology update: The board approved removing the length restrictions on arrows and bolts for airgun, archery and cross-bow hunting in Utah. Updated regulations will be published in the *2024 Utah Big Game Field Regulations Guidebook* (available in June 2024).

KNOW THE LAWS

This guidebook—along with the *2024 Utah Big Game Field Regulations Guidebook* (available in June 2024)—summarizes the rules and laws that regulate big game hunting in Utah. Although these books are convenient quick-reference documents for Utah big game regulations, they are not all-encompassing resources.

For an in-depth look at the state's big game hunting laws and rules, visit wildlife.utah.gov/rules.

You can use the references in this guidebook—such as *Utah Admin. Rule R657-5-24* and *Utah Code § 23A-5-207*—to search the Division's website for the detailed statute or rule that underpins the guidebook summary.

If you have questions about a particular rule, call or visit the nearest Division office.

Who makes the rules?

The Utah Wildlife Board passes the rules and laws summarized in this guidebook.

There are seven board members, and each serves a six-year term. Appointed by the governor, board members are not Division employees.

The Division's director serves as the board's executive secretary but does not have a vote on wildlife policies.

Before board members make changes to wildlife rules, they listen to recommendations from Division biologists. They also receive input from the public and various interest groups via the regional advisory council (RAC) process.

If you have feedback or suggestions for board members, you can find their contact information online at wildlife.utah.gov.

Wildlife Board members

Kent Johnson
Paula Richmond
Bret Selman
Bryce Thurgood

Randy Dearth, *Chair*
Gary Nielson, *Vice Chair*
J. Shirley, *Division Director*
& *Executive Secretary*

Name changes for multiple hunt units:

In order to simplify hunt unit names, in 2024 hunt units previously beginning with the designations of South Slope, Plateau and Central Mtns have been shortened to remove those words from the name (hunt numbers are the same). For example, South Slope, Diamond Mtn has been changed to Diamond Mtn. New hunt unit names are noted with a “◊” symbol in the hunt tables beginning on page 42.

Dedicated Hunter program changes: The board approved several administrative changes to the Dedicated Hunter program, including the minimum number of service hours expected per year during participants’ three-year enrollment in the program. The pre-application orientation course requirement has also been discontinued. These updates—and details about how to apply to be a Dedicated Hunter—are outlined on page 33 and at wildlife.utah.gov/dh.

Research antlerless hunts online: In late May 2024, visit wildlife.utah.gov/guidebooks to find all of the information you’ll need to research Utah’s antlerless hunts. This information includes application dates, rules, hunt tables, boundaries and maps. The antlerless application period runs from June 5–19, 2024.

Apply for bonus or preference points:

The 2024 big game bonus or preference point application period is March 21–April 25. If you miss the April 25 deadline, there will be a second opportunity during the June 5–19 antlerless application period to apply for big game bonus or preference points. See pages 20-21 for details about why bonus and preference points matter, and pages 28-29 for more about the application periods.

Find updated maps and boundaries: Use the Utah Hunt Planner at hunt.utah.gov to find unit maps, boundaries and information on the hunts you want to apply for. To learn more, see page 19.

Season date changes: Season dates change every year, so please check them carefully before applying for hunts. You can find season dates in the hunt tables that begin on page 7.

Permits for lifetime license holders: If you’re a lifetime license holder, see the box on page 32 for more information about obtaining your general-season deer permit.

Important reminders

Edit your application: You may edit your application free of charge at any time during the application period (before 11 p.m. MDT on April 25, 2024). You will not be charged any additional fees, unless you completely withdraw your application and resubmit. See page 28 for more information.

View permit numbers during the application period: Hunters can access proposed permit numbers for each hunt unit beginning in April. This information will be available through the Utah Hunt Planner at hunt.utah.gov.

Keep your license on your phone or tablet

We’ve made it easier for you to keep track of your hunting or combination license and know when it’s about to expire. With our convenient mobile app, you can download your license to a mobile device.

If a conservation officer asks to see your license, you can produce the digital copy, which is just as valid as a paper license.

If you use the app, you will be able to easily see when your license expires.

The app is available for both Apple and Android devices. You can download it at wildlife.utah.gov/mobileapp.

Please remember that licenses are different from permits. If your hunt requires a permit, you must carry it with you while hunting.

Field regulations available in June: The *2024 Utah Big Game Field Regulations Guidebook* will be available from license agents and Division offices in June 2024. It will include the rules for both big game and antlerless hunting.

Name change for youth any bull elk permit in the draw: Look for the “draw-only youth any bull/hunter’s choice elk” hunt if you are a youth hunter applying for a youth general-season any bull elk permit. This name change went into effect last year.

Child support law: There are restrictions on fishing and hunting license purchasers for nonpayment of child support. For additional information—or to arrange a payment schedule—please contact the Office of Recovery Services at 801-536-8500.

Options for military members: Active military personnel may be eligible to purchase a bonus or preference point if they are deployed during the big game application period. For details, see the information box on page 10 or visit wildlife.utah.gov/military.

Multi-season deer hunting for youth: In order to hunt all general deer seasons (archery, muzzleloader and any legal weapon), a youth must obtain a general-season any legal weapon permit. For details, see the article on page 34.

Antlerless elk permit rules: Antlerless elk permits may be used **only** during the season dates printed on your permit. See page 23 for details.

Hunter Mentoring Program: The Hunter Mentoring Program allows a young person to share a mentor’s permit. To learn more, see the information box on page 20 or visit wildlife.utah.gov/mentoring.

Hunting license required: Before you can apply for a 2024 big game permit, bonus point or preference point, you must have a valid Utah hunting or combination license. Please see page 17 for more information. For the exceptions available to active, deployed military members, please see the information box on page 10.

Discounted licenses for disabled veterans: The Division offers discounted hunting and combination licenses to Utah veterans who were disabled in the line of duty. For details, see page 6.

Collecting shed antlers: If you want to collect shed antlers and horns from Feb. 1 to April 15, you must complete an online course. You will receive a course-completion certificate that you must carry on your person while collecting the antlers and horns. For more information, see page 13.

Antlerless big game hunting

Antlerless hunting is the primary tool biologists use to control the size of big game herds.

This year, you can apply online for one or more antlerless big game permits from June 5–19, 2024. Plan on visiting wildlife.utah.gov in late May 2024 to see which permits are available.

Antlerless drawing results will be available on or before July 5, 2024. If any antlerless permits remain available after the drawing, you can purchase them starting July 23.

Reminder: If you obtain an antlerless permit that remains available after the drawing, you will lose any preference points that you’ve accrued for that species.

The *2024 Utah Big Game Field Regulations Guidebook* will be available in June. That guidebook will contain information you can use in the field during your big game and antlerless hunts.

Guidebook correction: If errors are found in this guidebook after it is printed, the Division will correct them in the online copy. Visit wildlife.utah.gov/guidebooks to view digital versions of all the Division's guidebooks.

Protection from discrimination: The Division receives federal financial assistance from the U.S. Fish and Wildlife Service. Under Title VI of the Civil Rights Act of 1964, Section 504 of the Rehabilitation Act of 1973, Title II of the Americans with Disabilities Act of 1990, the Age Discrimination Act of 1975, Title IX of the Education Amendments of 1972, the U.S. Department of the Interior and its bureaus prohibit discrimination on the basis of race, color, national origin, age, disability or sex. If you believe that you have been discriminated against in any program, activity or facility, or if you desire further information, please visit www.doi.gov/pmb/eo/public-civil-rights.

Private lands: The Division cannot guarantee access to any private land. You must obtain written permission from the landowner or the landowner's authorized representative before hunting or trapping on private lands. For more information, please see *Utah Code* §§ 23A-5-310 and 23A-5-317.

Division funding: The Division is mostly funded by the sale of hunting and fishing licenses and through federal aid made possible by an excise tax on the sale of firearms and other hunting- and fishing-related equipment.

Discounted licenses for disabled veterans

The Division offers discounted hunting and combination licenses to Utah servicemembers who were disabled in the line of duty.

The discounted hunting license is \$25.50, instead of the \$40 full price. Likewise, the discounted combination license is \$28.50, instead of the \$44 full price. Either license is good for 365 days from the day you buy it. Discounted licenses are available online or from all Division offices listed on page 2.

To purchase a discounted hunting or combination license, you must be a Utah resident and have a qualifying service-connected disability of at least 20 percent.

To apply for a license online, please visit wildlife.utah.gov/disabledvet and complete the online form. If you need assistance, please call the nearest Division office.

If you choose to visit a Division office to purchase your license, simply bring the verification of service-connected disability documentation that the Department of Veterans Affairs issued to you.

You can find additional resources for hunters and anglers with disabilities at wildlife.utah.gov/disabled-access.

**DOUSE. STIR.
CHECK. REPEAT.**

Extinguish campfires. Prevent wildfires.



General-season dates

Hunt	Dates
General archery deer	Aug. 17–Sept. 13
General muzzleloader deer	Sept. 25–Oct. 3
Early general any legal weapon (rifle) deer	Oct. 9–13
General any legal weapon (rifle) deer	Oct. 19–27
General archery any bull elk*	Aug. 17–Sept. 18
General archery spike elk	Aug. 17–Sept. 6
Early general any legal weapon (rifle) any bull elk	Oct. 5–11
Late general any legal weapon (rifle) any bull elk	Oct. 12–18
General any legal weapon (rifle) spike bull elk	Oct. 5–17
General muzzleloader elk	Oct. 30–Nov. 7
General-season youth elk permit	See page 35 for dates
Draw-only youth any bull/hunter's choice elk (see pages 34-35 for more information)	Sept. 14–22

*No general-season archery elk hunt on the Paunsaugunt unit.

Possible habitat work in your hunt area

Throughout the year, the Division works with other government agencies—including the U.S. Forest Service and the Bureau of Land Management—to complete thousands of acres of habitat-improvement work on Utah's public lands.

Those projects range from plant removal to prescribed burns and from helicopter reseeding to large-scale planting projects. They help restore habitat for mule deer, elk, sage-grouse and other species, giving them the food and cover they need to thrive on the landscape.

Please be aware that projects occur across the state, year round. This means that sometimes a project may occur in a portion of your hunt area, during the hunt.

If this is something you're concerned about, you may want to contact the appropriate land-management agency before you apply for a particular hunt area. They may be able to give you a tentative list of projects for the coming year.

You can also see a list of past, current and proposed restoration projects at watershed.utah.gov.

2024 SEASON DATES

Extended archery season dates

Utah Admin. Rule R657-5-23

You do not need to apply for an additional permit to hunt during the extended archery seasons. As long as you obtain an archery buck deer or bull elk permit in 2024—and you complete the required extended archery ethics course—you may also hunt any of Utah's extended archery areas during the seasons listed to the right.

The online archery ethics course is an annual requirement for all archers who want to hunt the extended areas and seasons. To take the course, visit wildlife.utah.gov/extendedarchery before the extended seasons begin. After you successfully complete the course, print your completion certificate and keep it with you while hunting (or download it to the DWR app).

To see maps and boundaries for all of the extended archery areas, visit hunt.utah.gov.

Important: Please check the hunt number (not just the hunt unit name) on your permit carefully and refer to the Utah Hunt Planner (hunt.utah.gov) to make sure your permit allows you to hunt in an extended archery unit within the allowed season dates.

Hunt

Dates

Extended archery deer (either sex) in the following extended archery areas:

Sept. 14–
Oct. 15

- Nine Mile, Green River Valley
- Sanpete Valley
- South Wasatch

Extended archery deer (either sex) in the following extended archery areas:

Sept. 14–
Nov. 30

- Box Elder, West Bear River
- Herriman South Valley
- Ogden
- Uintah Basin
- Utah Lake
- Wasatch Front
- West Cache

Extended archery elk (either sex) in the following extended archery areas:

Aug. 17–
Dec. 15

- Uintah Basin
- Wasatch Front
- West Cache



Download the free

UTAH
HUNTING &
FISHING APP

wildlife.utah.gov/MobileApp

Sportsman and statewide conservation permit season dates

Only Utah residents can apply for sportsman permits. See the information box to the right to learn more.

Hunt	Dates
Deer, elk and pronghorn on any open unit with archery equipment*‡	Aug. 17–31, 2024
Deer and elk on any open unit with any legal weapon*‡	Sept. 1, 2024–Jan. 15, 2025
Pronghorn on any open unit with any legal weapon	Sept. 1–Nov. 15, 2024
Bighorn sheep and mountain goat on any open unit with any legal weapon*‡	Aug. 31–Dec. 31, 2024
Bison on any open unit with any legal weapon‡	Aug. 1, 2024–Jan. 31, 2025
Moose on any open unit with any legal weapon	Aug. 31–Nov. 15, 2024
Turkey on any open unit	April 1–May 31, 2024
Black bear on any open unit	During the season dates listed in the <i>2024 Utah Black Bear Guidebook</i> for that unit

* You may not take an elk or Rocky Mountain bighorn sheep on the Box Elder, Pilot Mtn hunting unit.

‡ Antelope Island is not an open unit. There are only a couple of permits that authorize hunting on the island. Those permits are listed in the hunt tables on page 48 and page 64.

2025 sportsman permits

Utah Admin. Rules R657-41 and R657-62-24

Next year, you could be the envy of every hunter you know. If you draw a 2025 Utah sportsman permit, you'll have one of the most exciting hunting permits the state offers. Hunters want these permits because:

- They typically have an extended hunting season.
- They allow you to hunt in nearly any unit across the state. (See the footnotes on the left side of this page for additional information.)
- Only Utah residents can apply for them.

One sportsman permit is usually offered each year for each of the following species: buck deer, buck pronghorn, bull elk, bull moose, desert bighorn ram, Rocky Mountain bighorn ram, hunter's choice bison and hunter's choice mountain goat. Sportsman permits are also offered for black bear and wild turkey.

You can apply for a sportsman permit from Oct. 16 to Nov. 6, 2024. For more information about these permits, and the few restrictions that apply, please visit wildlife.utah.gov in mid-October 2024.

2024 SALES DATES

Permit sales dates

In July, various types of big game permits will be available for purchase at all DWR offices, license agent locations (wildlife.utah.gov/licenses/locator) or online at wildlife.utah.gov. See the following table for sales dates.

Permit type	Sales date
General-season archery elk permits	July 9, 2024
Remaining limited-entry big game permits, if available	July 9, 2024
Bison permits for the Nine Mile unit*	July 9, 2024
Youth general-season elk permits (unlimited)	July 9, 2024
Remaining general-season deer permits, if available (also youth archery deer permits)	July 9, 2024
General-season any bull elk permits	July 11, 2024
General-season spike bull elk permits	July 18, 2024
All antlerless permits, if available	July 23, 2024

* *The availability of this permit varies each season. See the 2024 Utah Big Game Field Regulations Guidebook (available in June 2024) for more details or visit hunt.utah.gov.*

Points options for active, deployed military personnel

If you are an active, deployed member of the military, you can purchase a bonus or preference point, even if you missed an application period while deployed. The Division will also waive the required combination or hunting license fee when you make that point purchase. To qualify for these exemptions, a military member must:

- Be a resident of Utah.
- Be deployed for 90 days or longer outside of Utah on federal orders from military command.
- Not have previously received a bonus or preference point for the species and hunt type in the same year.
- Otherwise be eligible to receive a bonus or preference point.
- Pay a \$10 application fee per point received.
- Submit an application for the exemption to DWR no later than Dec. 31 of the qualifying year of being deployed.

For additional information and the application form, visit wildlife.utah.gov/military.

Trail camera regulations and night-vision device rules

Utah Admin. Rule R657-5-7 and Utah Code § 23A-5-307

In 2022 and 2023, there were Utah Wild- life Board and legislative updates regarding the use of trail cameras and night-vision devices.

What are the trail camera regula- tions in Utah?

- All trail cameras are prohibited on public land from July 31 to Dec. 31 (with exceptions for approved research and monitoring).
- A trail camera using internal data stor- age—and not capable of transmitting live data—is permitted for use on private land for the purposes of legal hunting.
- The sale or purchase of footage or data from any trail camera (or non- handheld device) that could be used to

take, attempt to take, or aid in the take or attempted take of big game, cougars or bears is prohibited. That includes images or video, location information, time and date of the footage, and any other data that could aid in the harvest or attempted take of big game, cougars or bears.

What are the rules for night-vision devices?

- The rule prohibits the use of any night- vision device to locate or attempt to locate big game, cougars or bears from 48 hours before any hunt in the area through 48 hours after any big game, cougar or bear hunt ends in the area.

For more information

See definitions for night-vision devices and trail cameras on pages 79-80 of this guidebook.

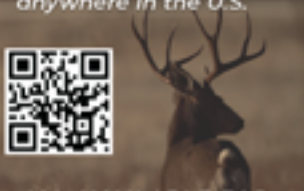
Visit wildlife.utah.gov/trailcams for more details about these rules.

THE NATURAL RESOURCES


MAP & BOOKSTORE

UTAHMAPSTORE.COM

The official source of over 55,000 USGS topographic maps for Utah and anywhere in the U.S.



ALL AVAILABLE FOR PRINT-ON-DEMAND
waterproof versions available



1594 W. NORTH TEMPLE, SALT LAKE CITY UT | CALL US AT 801-537-3320 OR 888-UTAHMAP

2024 SEASON DATES

CWMU season dates

The Wildlife Board has established time-frames for hunting bucks and bulls on Cooperative Wildlife Management Units (CWMUs). The actual hunt dates for each CWMU can vary.

Hunters should expect to hunt at least five days, generally between Sept. 1 and Oct. 31. Contact the operator of the CWMU to see what the actual hunt days will be this year. In some instances it may be outside of the Sept. 1–Oct. 31 dates.

Before you apply for a CWMU permit, please visit wildlife.utah.gov/cwmu. You'll find detailed information about season dates, CWMU rules, hunt success and how to contact the operator. If you draw a permit, you **must** contact the CWMU operator to confirm your season dates.

Keep in mind that whether you draw or purchase a permit, you may not obtain more than one of each of the following permits during the 2024 big game season:

- Buck deer permit
- Bull elk permit
- Buck pronghorn permit

For example, if you draw a general-season buck deer permit—and then decide you want to hunt on a CWMU instead—you must

surrender your general-season permit before the opening day of the season listed on your permit and before redeeming the private CWMU voucher for a permit.


Reminder: If you choose to surrender any big game permit you've drawn (to purchase/obtain a private CWMU voucher, for example), be sure to do so at least 30 days before your hunt begins in order to keep the preference or bonus points that helped you draw the original permit. You will not earn a point for the current year. **If you surrender a big game permit less than 30 days before the season opens, you will lose all of your previously accrued bonus or preference points for that species and you will not earn a point for the current year.**

As long as you surrender a big game permit before the season opens, any applicable waiting period(s) will be waived.

Important: Nonresidents may not apply for CWMU permits in the drawing. They can, however, obtain a permit voucher directly from the CWMU landowner or operator.

For more information on the CWMU program—including CWMU hunt season dates, operator names and contact numbers—visit wildlife.utah.gov/cwmu.



TEAM 
WILDLIFE

HEIDI HECKETHORN
WHY I'M A HUNTER

WILDLIFE.UTAH.GOV/TEAMWILDLIFE

Gathering shed antlers or horns

Utah Admin. Rule R657-5-21

You may gather shed antlers or horns—or parts of shed antlers or horns—statewide, but there is one seasonal requirement.

From Feb. 1 to April 15, 2024, you must have an antler-gathering certificate on your person while collecting shed antlers or horns. You can obtain this free certificate by visiting wildlife.utah.gov/antler-gathering and completing an online course. You do not need an antler-gathering certificate at any other time of the year.

Please remember that if the winter weather becomes severe, the Division may choose to close antler gathering in hard-hit areas.

Important: The antler-gathering certificate does not authorize you to trespass on closed areas or private lands to collect shed antlers or horns.

Season dates

Online course completion Feb. 1–April 15 certificate required*

* You must complete this course every year.

How many permits will be available in 2024?

The Utah Wildlife Board approved 2024 general-season elk permit numbers as follows:

- 15,000 general-season permits for the early season any-legal-weapon any bull hunt
- 15,000 spike bull permits, with a cap of 4,500 available as multi-season permits
- Unlimited youth general-season elk permits (these permits will not count toward the above caps)

What if I find antlers or horns attached to a skull?

If you find a skull with the antlers or horns still attached, it's possible the animal was poached.

Do NOT pick up or move the skull, or disturb footprints or other evidence.

Instead, please take the following steps:

- Take photos from a couple of angles
- Pinpoint the location of the skull (preferably its GPS coordinates)
- Report your find to a Division office
- Provide key details in your report

New: Use the DWR Utah Deadhead Reporter app to speed up the required authorization to keep your find. Visit wildlife.utah.gov/deadhead for details and app instructions.

The Division will send a conservation officer to investigate if the animal was poached. If it's clear that the animal died of natural causes, we may allow you to keep the deadhead.

- No cap on permit numbers for the late season any-legal-weapon any bull hunt
- The board will set permit numbers for other big game species and antlerless hunts when it meets May 2, 2024.

Division biologists will collect and analyze the most recent harvest and population data before making their recommendations to the Wildlife Board.

Note: Hunters will have access to the proposed permit numbers during the application period. Proposed permit numbers will be posted on the Hunt Planner at hunt.utah.gov the first week of April. Hunters will be able to edit their applications until April 25, 2024.

LICENSE, PERMIT AND PROGRAM FEES

License fees

Resident license fees

License	Fee
365-day hunting license (age 13 and under)	\$11
365-day hunting license (ages 14–17)	\$16
365-day hunting license (ages 18–64)	\$40
365-day hunting license (age 65 and older)	\$31
365-day hunting license for disabled veterans (see the box on page 6)	\$25.50
Multi-year hunting license (age 18–64)	\$39 per year, up to five years
Multi-year hunting license (age 65 and older)	\$30 per year, up to five years
365-day combination* license (ages 14–17)	\$20
365-day combination* license (ages 18–64)	\$44
365-day combination* license (age 65 and older)	\$35
365-day combination license for disabled veterans (see the box on page 6)	\$28.50
Multi-year combination* license (age 18–64)	\$43 per year, up to five years
Multi-year combination* license (age 65 and older)	\$34 per year, up to five years

* A combination license allows you to hunt or fish in Utah.

Nonresident license fees

License	Fee
365-day hunting license (age 17 and younger)	\$34
365-day hunting license (age 18 and older)	\$120
Multi-year hunting license (up to five years) for age 18 and older	\$119 per year, up to five years
365-day combination* license (age 17 and younger)	\$38
365-day combination* license (age 18 and older)	\$150
Multi-year combination* license (age 18 and older)	\$149 per year, up to five years

* A combination license allows you to hunt or fish in Utah.

License fee changes

The Utah Legislature approved several proposed changes to Utah's hunting and fishing license fees, which went into effect on July 1, 2023.

This is the first fee increase for Utah residents since 2014. The DWR is currently 92% self-funded through license and permit fees, and receives only limited funding from the state's General Fund, which is appropriated for specific issues that impact all Utahns.

Your purchases of hunting and fishing licenses and permits help fund wildlife conservation efforts throughout the state.

Thank you for choosing to hunt, trap and fish here in Utah.

Permit fees

Please keep in mind that if you participate in the hunt drawing, you will also be charged a nonrefundable application fee for each species or bonus point you apply for. The application fee is \$10 for residents and \$16 for nonresidents. You will not be charged a permit fee unless you draw a permit.

To see a full list of Utah's license and permit fees, visit wildlife.utah.gov/licenses/fees.

Deer permit fees

Permit	Resident	Nonres.
General deer	\$46	\$418
Youth general deer	\$40	\$418
Limited entry	\$94	\$670
Multi-season limited entry	\$170	\$1,130
Premium limited entry	\$185	\$798
Multi-season premium limited entry	\$336	\$1,330
Management and cactus buck deer	\$94	\$670
CWMU	\$94	\$670
CWMU management and cactus buck deer	\$94	\$568
Premium CWMU	\$185	\$798

Elk permit fees

Permit	Resident	Nonres.
General any bull or spike bull	\$56	\$613
Multi-season general spike bull	\$200	\$830
Draw-only youth any bull/hunter's choice	\$50	\$613
Youth general elk	\$50	\$613
Limited entry	\$314	\$1,050
Multi-season limited entry	\$564	\$1,855
CWMU	\$314	\$1,050

Pronghorn permit fees

Permit	Resident	Nonres.
Limited entry	\$63	\$371
CWMU	\$63	\$371

Moose permit fees

Permit	Resident	Nonres.
Bull moose	\$454	\$2,244
CWMU	\$454	\$2,244

Bison permit fees

Permit	Resident	Nonres.
Bison (not on Antelope Island)	\$460	\$2,420
Bison on Antelope Island	\$1,221	n/a

Bighorn sheep permit fees

Permit	Resident	Nonres.
Desert bighorn	\$564	\$2,244
Rocky Mountain bighorn	\$564	\$2,244

Mountain goat permit fees

Permit	Resident	Nonres.
Mountain goat	\$454	\$2,244

Dedicated Hunter program fees

Adult (18 and older)	
Residents	\$215
Nonresidents	\$1,067
Lifetime license holders	\$86
Youth (12 to 17 years old)	
Residents	\$120
Nonresidents	\$834

BASIC REQUIREMENTS

Are you planning to hunt big game in Utah this year? Before you apply for a permit, make sure you meet Utah's age, hunter education, license and permit requirements.

Are you old enough?

Utah Code § 23A-4-703

To hunt big game in Utah, you must be at least 12 years old.

If you are least 11 years old, you can apply for or obtain any big game permits for which you are eligible, including limited-entry and once-in-a-lifetime permits. Any 11-year-olds who apply must be 12 by Dec. 31, 2024.

Remember, you cannot hunt until you are 12 years old.

If you're younger than 18, you can apply to participate in the Utah Hunter Mentoring Program. For details on the program, see the information box on page 20 or visit wildlife.utah.gov/mentoring.

If you're 12 years old or older, you can also participate in the Trial Hunting Program. For details, see the box below.

Utah's Trial Hunting Program

Utah Admin. Rule R657-68

Have you ever wanted to bring your spouse, child or friend along on a hunt and give them a chance to try hunting? Now, they can join you on your next big game hunt.

Utah's Trial Hunting Program allows anyone over the age of 12 to try hunting for three years—while accompanied by a licensed hunter over the age of 21—before taking a Hunter Education course.

The program applies to hunts for many different species, including all general-season big game hunts. (**Important:** Limited-entry and once-in-a-lifetime hunts are excluded from participation in this program.) To sign up for Utah's Trial Hunting Program or to learn more about it, visit wildlife.utah.gov/trial.

Adults must accompany young hunters

Utah Code § 23A-4-708

While hunting big game, a person under 16 years old must be accompanied by his or her parent, legal guardian or other responsible person who is 21 years of age or older and who has been approved by the parent or guardian.

The Division encourages adults to be familiar with hunter education guidelines or to complete the hunter education course before accompanying youth into the field.

While in the field, the youth and the adult must remain close enough for the adult to see and provide verbal assistance to the young hunter. Using electronic devices, such as walkie-talkies or cell phones, does not meet this requirement.

Have you passed hunter education?

Utah Code § 23A-4-1001 & Utah Admin. Rule R657-23

If you were born after Dec. 31, 1965, you must provide proof that you've passed a hunter education course approved by the Division before you can apply for or obtain a hunting license or a big game permit.

The only exception to this law is for individuals who are participating in the Division's Trial Hunting Program. You can find details about the program in the box to the left or by visiting wildlife.utah.gov/trial.

Proof of hunter education

You can prove that you've completed hunter education by obtaining a hunter education card (called a "blue card" in Utah) or if you have a verified hunter education number on file with the Division. The number is assigned when you complete hunter education and your blue card is issued.

How to take hunter education

To get started, you should visit wildlife.utah.gov/huntereducation. You'll see links to various traditional and online hunter education courses. Follow the instructions on the website to obtain a hunter education registration certificate (required) and to register for a course online.

If you need assistance, please contact your local Division office or call 801-538-4727.

When you finish the course, your instructor will verify your course completion in the online hunter education system. At that point, you will be able to apply for or obtain permits in the Division's hunt drawing, and your hunter education registration certificate will become your hunting license.

Approximately four to six weeks after you complete the course, you will receive your blue card by mail.

You should also keep the following in mind:

- Hunters under the age of 16 must be accompanied by an adult while hunting.
- Regardless of when a student graduates, all hunting regulations (such as season dates and bag limits) will apply.
- Hunters who are planning to hunt out of state should allow enough time for their hunter education card to arrive in the mail.

New to Utah?

If you become a Utah resident, and you've completed a hunter education course in another state, province or country, you must obtain a Utah blue card before you can buy a resident hunting license. You can obtain a Utah blue card at any Division office by providing proof that you've completed a hunter education course approved by the Division.

Do you have a license?

Utah Code §§§ 23A-4-201, 23A-4-703 and 23A-5-309

You must have a current Utah hunting or combination (hunting and fishing) license before you can apply for any big game permits, bonus points or preference points. Licenses are available at wildlife.utah.gov and from license agents and Division offices.

Be sure to take a look at the date on your license before you apply for any permits or points. As long as your license is valid on the date you submit your application, you don't have to purchase a new license for the actual hunt.

For example, assume that your license expires on June 21, 2024. If you apply before that date, you do not have to purchase a new license for your hunt in the fall. All hunting and combination licenses are valid for 365 days from the date of purchase.

Do you have a permit?

Utah Admin. Rule R657-62-18

To participate in any of Utah's big game hunts, you need to obtain a hunting permit. See page 18 to learn about the types of permits available in 2024.

Utah issues most of its big game permits through the big game hunt drawing. To apply for this drawing, visit wildlife.utah.gov between March 21 and April 25, 2024. For additional details and important dates, see *Apply for big game permits* on page 28.

Important: Before you go into the field, review your permit and sign it. A permit must bear your signature to be valid.

Carry your permit

If you are successful in obtaining a big game permit, you must have it on your person while hunting. You cannot alter your license or permit, nor can you sell, transfer or loan either of them to another person.

PREPARE TO APPLY

Utah Admin. Rule R657-62-18

To participate in Utah's big game hunts, you need to obtain hunting permits. The Division distributes most of those permits through the big game hunt drawing. You can apply for the drawing from March 21–April 25, 2024. It will be easier to apply if you are thoroughly prepared before you begin the application process.

Residency and hunt options

Utah Code § 23A-1-101

Before you apply for any big game hunts, it's important to know whether you are a legal resident of the state of Utah. Although residents and nonresidents can apply for many of the same types of permits, there are some differences. See the definition of residency on page 79 to determine whether you are a resident or a nonresident.

Residents

If you're a Utah resident, you can apply for one limited-entry permit for only **one** of the species listed below:

- Buck deer—Any one of the limited-entry buck deer hunts (see the hunt tables that start on page 48)
- Bull elk—Any one of the limited-entry bull elk hunts (see the hunt tables that start on page 53)
- Buck pronghorn—Any one of the limited-entry buck pronghorn hunts (see the hunt tables that start on page 60)

In addition to applying for a limited-entry permit for one of those three species, you can also apply for one once-in-a-lifetime permit. (See the definitions of limited-entry hunt and limited-entry permit on page 79.)

You may draw only one of the above permits each year.

Nonresidents

If you're a nonresident, you can apply to hunt all of the following:

- Buck deer—All of the limited-entry buck deer hunts open to nonresidents (see the hunt tables that start on page 48)

- Bull elk—All of the limited-entry bull elk hunts open to nonresidents (see the hunt tables that start on page 53)
- Buck pronghorn—All of the limited-entry buck pronghorn hunts open to nonresidents (see the hunt tables that start on page 60)
- All once-in-a-lifetime species for which you are eligible (see the hunt tables that start on page 63)

You may draw only one of the above permits each year. (See the definitions of limited-entry hunt and limited-entry permit on page 79.)

Note: If you obtain a nonresident big game permit (not an antlerless permit), it also serves as a nonresident fishing license.

Both residents and nonresidents

There are additional hunting opportunities available to both residents and nonresidents. Even if you apply for one or more of the hunts listed above, you can also apply for one of the following general-season deer permits:

- An archery buck deer permit
- An any legal weapon (rifle) buck deer permit
- A muzzleloader buck deer permit

As you apply for various permits, please remember that you may not obtain more than one buck deer or one bull elk permit each year. For example, if you obtain a limited-entry deer permit, you may not buy a general-season deer permit.

Do your research

It's important to nail down the details before applying for a hunt. You don't want to accidentally apply for the wrong hunting unit or season. We've provided information in this guidebook and links to online tools that can help you research your options.

Review the hunt tables

All of the big game hunts you can apply for are listed in the tables that begin on page 42. You will need to use the hunt numbers associated with the hunts in order to apply for permits. Please keep in mind that hunt names and boundaries may change from year to year.

See maps and boundaries online

You'll find detailed maps and boundary descriptions for all big game hunts at hunt.utah.gov.

Research hunts on the Utah Hunt Planner

There's a useful online tool that can help you plan a successful, enjoyable hunt. The Utah Hunt Planner is located at hunt.utah.gov.

During the application period (March 21–April 25), you can research hunts on the Utah Hunt Planner. If you obtain a big game permit in 2024, this is a tool that can help you have a great experience during your hunt.

Check proposed permit numbers

Hunters can access proposed permit numbers for each hunt unit beginning in April. This information will be available on the Utah Hunt Planner at hunt.utah.gov.

The Utah Wildlife Board will approve final permit numbers on May 2, 2024.

Obtain permission to hunt private property

The Division cannot guarantee access to private land, and the agency does not have the names of landowners who own property where hunts occur.

You must obtain written permission from the landowner or the landowner's authorized representative before hunting or trapping on private lands. Ideally, you should have permission **before** you apply for a permit.

You can download a landowner permission card at wildlife.utah.gov/permission.

Understand the drawing order

Utah Admin. Rule R657-62-18

A better understanding of the drawing order may affect which permits you decide to apply for. Big game permits are drawn in the following order:

- First—Buck deer (all limited-entry permits)
- Second—Bull elk (all limited-entry permits)
- Third—Buck pronghorn (all limited-entry permits)
- Fourth—Once-in-a-lifetime permits
- Fifth—General buck deer (Lifetime License holders)
- Sixth—General buck deer (Dedicated Hunters)
- Seventh—General buck deer (youth)
- Eighth—General buck deer
- Last—Draw-only youth any bull/hunter's choice elk

Because of the order in which permits are drawn, you will **not** be included in the drawing for a once-in-a-lifetime permit if you draw any of the following permits:

- Buck deer (any limited-entry permit)
- Bull elk (any limited-entry permit)
- Buck pronghorn (any limited-entry permit)

The definition of a limited-entry permit is listed on page 79. For more information about the permit drawing order, please visit wildlife.utah.gov/drawings.

Know how to apply as a group

Utah Admin. Rule R657-62-7 and R657-62-18

If you want to apply with your friends and family as a group, there are some important things to consider before selecting your hunt choices.

Both residents and nonresidents can apply together. However, if you're a Utah resident and you decide to apply with a nonresident, make sure nonresident permits are available for each hunt your group is applying for. If nonresident permits are not available for a hunt your group is applying for, the nonresident and everyone else in the group—including the Utah residents—will not be allowed to draw for that hunt unit.

Up to **four hunters**—including a mix of residents and nonresidents—can apply together for available general-season deer, limited-entry deer, elk or pronghorn permits by using a group code. Group applications are not accepted for management buck deer hunts or once-in-a-lifetime hunts.

Hunter Mentoring Program

The Utah Hunter Mentoring Program allows any qualifying adult to share their hunting permits with resident youth.

Permits that are eligible for sharing under the Hunter Mentoring Program include all big game permits as well as black bear, turkey, greater sage-grouse and sharp-tailed grouse permits. Only swan and sandhill crane permits may not be shared because they are subject to conflicting federal regulations.

To learn more about program eligibility and requirements and to download the application form, visit wildlife.utah.gov/mentoring.

Visit wildlife.utah.gov/group-applications for more information about using a group code in the big game application.

Applying as a youth-only group: Up to four youth can apply together in a youth-only group. **Important:** If you're a youth and you want an opportunity to draw one of the permits reserved for youth, do **not** apply in a group with an adult. Visit wildlife.utah.gov/group-applications for details.

Why bonus points matter

Utah Admin. Rule R657-62-8

Utah's bonus point system has been put in place to increase your chance of drawing a big game permit. Knowing more about the points system may be helpful during the application process.

Every time you apply for a limited-entry permit, but you don't draw one, you receive a bonus point for that species.

Applying for a general-season buck deer permit will not affect your ability to obtain a bonus point for limited-entry deer. If you draw a general-season buck deer permit, you'll still receive a bonus point if you are unsuccessful in drawing a limited-entry buck deer permit.

Applying for a bonus point

Even if you're not going to hunt in 2024, you can still receive a bonus point by applying for one. To apply for a bonus point, select the appropriate bonus point code on your application and pay the application fee, which is \$10 for residents and \$16 for nonresidents. The 2024 bonus point application period is March 21–April 25, or you may apply during the June 5–19 antlerless application period.

Because you apply for bonus points by species, instead of by hunt, you may apply for a bonus point even if a particular hunt isn't being offered in 2024.

To apply for a bonus point, you must be eligible for the hunt the bonus point will be awarded for. For example, if you're eligible for a limited-entry buck deer permit, you're eligible to apply for a limited-entry buck deer bonus point.

Residents

If you're a resident, you may apply for one of the following:

- One limited-entry permit and one once-in-a-lifetime permit
- One limited-entry permit and one once-in-a-lifetime bonus point
- One limited-entry bonus point and one once-in-a-lifetime permit
- One limited-entry bonus point and one once-in-a-lifetime bonus point

You may **not** apply for the following:

- A permit and a bonus point for the same species
- More than one limited-entry bonus point
- More than one once-in-a-lifetime bonus point

Nonresidents

If you're a nonresident, you may apply for permits or bonus points for all limited-entry and once-in-a-lifetime species. However, you may not apply for a permit and a bonus point for the same species.

Please remember that you may draw only one limited-entry or once-in-a-lifetime permit each year.

How your bonus points work

For detailed information on how your bonus points work in the drawing, visit wildlife.utah.gov/points.

Why preference points matter

Utah Admin. Rule R657-62-9

Utah's preference point system gives hunters who don't draw a general-season buck deer permit a better chance at drawing one the following year.

Each time you apply for a general-season buck deer permit and don't draw one, you'll receive a preference point. Please keep in mind that preference points are given for a species—deer, in this case—and not for a particular hunting unit.

Applying for a preference point

Even if you won't be hunting general-season buck deer in 2024, you can still apply for a preference point by selecting code GDR on your application and paying the application fee. The application fee is \$10 for residents and \$16 for nonresidents. The 2024 application period is March 21–April 25, or you may apply during the June 5–19 antlerless application period.

If you draw a general-season deer permit, you will lose your preference points and not receive an additional preference point.

Reminder: If you purchase a general-season buck deer permit that remains available after the drawing, you will lose any preference points you have for general-season buck deer.

How your preference points work in the drawing

For detailed information on how your preference points work in the drawing, visit wildlife.utah.gov/points.

Are you eligible to apply?

Before you submit your application, make sure that you are eligible to participate in the big game drawing.

You may not apply if...

You may not apply for a hunting permit, a bonus point or a preference point if any of the following conditions apply:

- Your big game hunting privilege has been suspended.
- You're under a waiting period for the species you want to apply for.
- You've already obtained a permit for the once-in-a-lifetime species you want to apply for.
- You drew any type of limited-entry or once-in-a-lifetime permit in 2023, but you didn't submit a harvest report.
- You don't have a hunting or combination license.

Additionally, if you are a CWMU landowner association member or a spouse or dependent child, you cannot apply for your own CWMU permits in the big game drawing.

Multi-season hunts for deer and elk

Utah Admin Rules R657-5-26 and R657-5-32

Utah offers some multi-season hunts for buck deer or bull elk on select limited-entry or premium limited-entry units during multiple seasons listed in the hunt tables of this guidebook. Those tables begin on page 42. Permits for those hunts are available through the big game drawing application.

Note: A hunter with a general multi-season spike bull elk permit may still participate in both the spike and any bull

Waiting periods

Waiting periods keep successful applicants out of the drawing for a few years and give other hunters a better chance at drawing a permit.

Limited-entry buck deer, buck pronghorn and bull elk permits

Utah Admin. Rule R657-62-18

The waiting period for limited-entry buck deer is five years.

The bull elk waiting period is five years.

The waiting period for buck pronghorn is two years.

Waiting periods do not apply to general-season permits.

Note: A youth may draw only one draw-only youth elk permit during their years as a youth.

Once-in-a-lifetime permits

Utah Admin. Rule R657-62-18

Bull moose, bison, Rocky Mountain bighorn sheep, desert bighorn sheep and mountain goat permits are once-in-a-lifetime permits. If you obtain a once-in-a-lifetime permit for a particular species, such as a bull moose, you may not apply for that permit again in the drawing.

You can still apply for other once-in-a-lifetime species that you haven't drawn a permit for.

hunts during the archery general season.

See page 10 for more information about all elk permit sales dates. Visit wildlife.utah.gov in early June to see purchase times and locations.

For detailed information about the multi-season spike elk hunts, see the *2024 Utah Big Game Field Regulations Guidebook* in June 2024.

Important: Please keep in mind that when you hunt multiple seasons, you must use the appropriate weapon type for the season.

Also, if you've been convicted of unlawfully taking a once-in-a-lifetime species, you may never apply for or obtain a permit for that species again.

Permits obtained after the drawing

Utah Admin. Rule R657-62-15

If you're under a waiting period for a certain species, you can still obtain any permit that remains for that species after the drawing, but your waiting period will start all over again.

For example, if you have two years left on your bull elk waiting period, and you buy a limited-entry bull elk permit that remains available after the drawing, you'll begin a new five-year waiting period that will prevent you from applying for a limited-entry bull elk permit for the next five years.

If you're not already under a waiting period—and you obtain a limited-entry or once-in-a-lifetime permit that remains available after the drawing—you will lose your bonus points for that species and incur a waiting period.

Private CWMU, conservation, expo and landowner permits

Utah Admin. Rule R657-62-18

If you obtain a CWMU, conservation, expo or landowner permit from a private individual or organization—for deer, elk or pronghorn—you won't be subject to a waiting period.

If you obtain a once-in-a-lifetime permit in the expo drawing or from a conservation organization, you may not apply for that species in any other public drawing.

The rules regarding CWMU and once-in-a-lifetime permits are as follows:

- If you have obtained a once-in-a-lifetime permit in the public drawing in the past, you may buy a once-in-a-lifetime permit from a landowner or a CWMU operator.
- If you have not obtained a once-in-a-lifetime permit in the public drawing—and you buy a once-in-a-lifetime permit from a landowner or a CWMU operator—you

Obtain up to three elk permits

Utah Admin. Rule R657-5-33

In Utah, a hunter can obtain up to three elk permits each year:

- A maximum of one permit can be for a bull elk.
- A maximum of one antlerless elk permit can be obtained through the antlerless hunt drawing.
- A maximum of two antlerless elk permits can be obtained over the counter.

Even though you cannot obtain antlerless elk permits until the summer of 2024, knowing about this opportunity may affect which permits you apply for in the big game drawing.

Important: Antlerless elk permits may be used **only** during the season dates printed on your permit.

may not obtain a permit in the public drawing for that species in the future.

Keep in mind that whether you draw or purchase a permit, you may not obtain more than one of each of the following permits during the 2024 big game season:

- Buck deer permit
- Bull elk permit
- Buck pronghorn permit

For example, if you draw a general-season buck deer permit—and then decide you want to hunt on a CWMU instead—you must surrender your general-season permit before the opening day of the season listed on your permit and before redeeming the private CWMU voucher for a permit.

Reminder: If you choose to surrender any big game permit (in order to purchase/obtain a private permit not offered through the drawing), be sure to do so at least 30 days before your hunt begins in order to keep the preference or bonus points that helped you draw the

original permit. You will not earn a point for the current year. **If you surrender a big game permit less than 30 days before the season opens, you will lose all of your previously accrued bonus or preference points for that species, and you will not earn a point for the current year.**

As long as you surrender a big game permit before the season opens, any applicable waiting period(s) will be waived.

Mandatory reporting

Reporting your hunt information is important—and required—even if you didn't harvest an animal. You must report your hunt information for any type of limited-entry, general-season, antlerless or once-in-a-lifetime hunt within 30 days of the end of the hunt.

New this year: The Utah Wildlife Board approved a mandatory harvest reporting requirement for all of the general-season buck deer and bull elk hunts in Utah, beginning in 2024. See the information box on page 25 for details.

If you don't meet this reporting requirement, you won't be allowed to apply the following year for any big game or antlerless application, or for bonus or preference points.

If you didn't submit your 2023 harvest survey questionnaire by the deadline last year, you can restore your eligibility to apply for a 2024 permit by submitting your harvest report and paying a \$50 late fee. (This fee will be waived for general-season buck deer and bull elk hunts in 2024, but fees will apply beginning in 2025.) For more information about harvest reporting rules and to report your harvest, visit wildlife.utah.gov/harvestreporting.

Keep in mind: If you are hunting the **extended archery seasons for general-season buck deer or bull elk** (does not apply to limited-entry hunts), you have up to 30 days after the extended archery hunt closes to report your harvest.

Hunts with special circumstances

Most of the permits you can draw through the big game hunt drawing are pretty self-explanatory. There are a few hunts, however, that require additional explanation.

Management buck deer hunt

Utah Admin. Rule R657-5-45

A "management buck" is a buck deer with three points or less on at least one antler, above and including the first fork, but not including the eye guard. The eye guard does not count as a point. A point is a projection that's longer than one inch, measured from its base to its tip, including damaged or broken antlers.

Management buck deer permits are available through the Utah big game drawing. If you are successful in the drawing, you must complete an online orientation course before you will receive your permit.

Important: If you obtain a management buck deer permit, that is the **only** buck deer permit you may obtain for the 2024 season. You will lose your bonus points and incur a waiting period of **five** years.

Why a management buck deer hunt?

Removing excess bucks—while protecting the larger bucks in the herds—is the goal of the management buck deer hunt.

The Paunsaugunt unit has high buck-to-doe ratios. Harvesting smaller-antlered bucks will preserve trophy-class bucks and provide more room for does. Having more does in the herds will result in more fawns being born. Having more fawns will help ensure that these herds remain strong and healthy into the future.

Changes to mandatory reporting requirements

Harvest surveys have been required for all limited-entry big game hunts in Utah for over two decades. Mandatory harvest reporting was implemented for all antlerless hunts in 2023. The Utah Wildlife Board approved mandatory harvest reporting for all of the general-season buck deer and bull elk hunts in Utah as well, beginning in 2024.

You are required to report your big game harvest within 30 days after your hunting season ends for the following hunts, even if you did not harvest an animal:

- Limited-entry
- Antlerless
- Once-in-a-lifetime
- CWMU
- HAMSS
- Management deer
- Cactus deer
- General-season buck deer (new)
- Dedicated Hunter buck deer (new)
- Youth general-season buck deer (new)
- General-season archery elk (new)
- Spike bull elk (new)
- Multi-season spike bull elk (new)
- Any bull elk (new)
- Youth general-season elk (new)
- Draw-only youth any bull/hunter's choice elk (new)

Note: If you didn't submit your 2023 harvest survey questionnaire by the deadline, you can still restore your eligibility to apply for a 2024 permit by reporting your harvest data and paying a \$50 late fee.

Starting in 2024: If you have a general-season buck deer or bull elk permit, you will have 30 days to report the results of your hunt. Failure to report will exclude you from the following year's big game and antlerless applications. You can still restore your eligibility to apply for a 2025 permit by reporting your harvest data (the \$50 late fee will be waived for general-season harvest reporting in 2024).

How do I complete my harvest survey?

It only takes a few minutes to complete a harvest report. To report your harvest, call 800-221-0659 or visit utah-hunt.com/UT_returncard.

For more information about harvest reporting requirements, restrictions and fines visit wildlife.utah.gov/harvestreporting.

Reporting your harvest helps the DWR maintain more comprehensive and quality harvest data year-to-year. Thank you for providing better insights into Utah's big game populations statewide.

Cactus buck hunts

Utah Admin. Rule R657-5-46

You can also apply for a permit to hunt a cactus buck on the Paunsaugunt unit or on the Alton CWMU. These bucks often have unique antler growth that many hunters find fascinating.

A cactus buck is one that still has velvet covering at least 50 percent of its antlers during the season dates set by the Wildlife Board. For season dates, see the hunt table on page 49.

Important: If you obtain a cactus buck deer permit, that is the **only** buck deer permit you may obtain for the 2024 season. You will lose your bonus points and incur a waiting period of **five** years.

HAMSS buck deer hunts

Utah Admin. Rule R657-5-47

For 2024, the Utah Wildlife Board approved three handgun-archery-muzzleloader-shotgun-straight walled rifle-only (HAMSS) hunts for buck deer. These hunts are considered limited-entry hunts. The hunts will take place in the following units:

- Book Cliffs, Floy Canyon (Nov. 9–24)
- East Canyon (Nov. 9–24)
- Kaiparowits HAMSS (Nov. 9–30)

Note: On all HAMSS hunts, no weapon-mounted optics are allowed. The complete weapon specifications for these hunts are currently listed online in *Utah Admin. Rule R657-5-47* and will also be included in the *2024 Big Game Field Regulations Guidebook*, available in June 2024.

For specific season dates, see the hunt tables on page 52.

Important: If you are successful in obtaining a permit for one of these hunts, you will lose your bonus points and incur a waiting period of **five** years.

HAMSS limited-entry elk hunts

Utah Admin. Rule R657-5-47

For 2024, the Utah Wildlife Board approved handgun-archery-muzzleloader-shotgun-straight walled rifle-only (HAMSS) hunts (Nov. 9–30, 2024) on these four limited-entry elk units:

- Barney Top/Kaiparowits (new name)
- Cache, North
- Southwest Desert, North
- West Desert, Deep Creek

Note: On all HAMSS hunts, no weapon-mounted optics are allowed. The complete weapon specifications for these hunts are currently listed online in *Utah Admin. Rule R657-5-47* and will also be included in the *2024 Big Game Field Regulations Guidebook*, available in June 2024.

For more information, see page 60.

Important: If you are successful in obtaining a permit for one of these hunts, you will lose your bonus points and incur a waiting period of **five** years.

Interact with our maps using the Avenza Maps™ app

From finding the perfect spot to catch a Yellowstone cutthroat to a birds-eye view of Utah's big game hunting units, our Avenza Map Store might have just what you need for your next fishing or hunting trip.

These maps are all available for free on the Avenza app and can be downloaded to your mobile device before heading out into the field—so that you can still use them without internet or cell phone service.

There are a few ways you can access Avenza Maps:

- Download the Avenza Maps app in the App Store or Google Play. You can find our maps by searching “UDWR” in the Avenza Map Store.
- Turn to the maps beginning on page 36 and use your smartphone to scan the QR code on the map you want to view.

Happy adventuring!

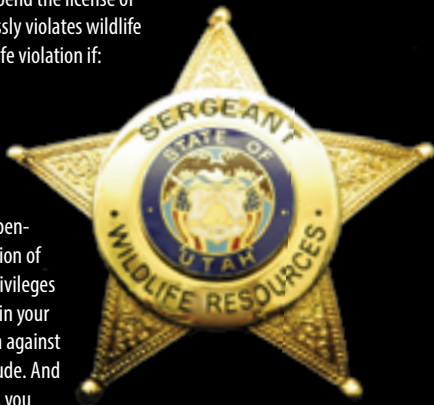
Don't lose your hunting and fishing privileges

If you commit a wildlife violation, you could lose the privilege of hunting and fishing in Utah.

The Utah Division of Wildlife Resources can suspend the license of anyone who knowingly, intentionally or recklessly violates wildlife laws. Your license can be suspended for a wildlife violation if:

- You are convicted.
- You plead guilty or no contest.
- You enter a plea in abeyance or diversion agreement.

Suspension proceedings are separate and independent from criminal prosecution. The Utah Division of Wildlife Resources may suspend your license privileges whether or not the court considers suspension in your criminal case. You will be notified of any action against your privilege after criminal proceedings conclude. And remember, if your license is suspended in Utah, you may not be permitted to hunt or fish in most other states. (Visit wildlife.utah.gov/know-the-consequences to see a map of participating states.)



ADVENTURE AWAITS

Don't miss out on Utah's breathtaking views and unforgettable hunts.



Renew or purchase your license today! Scan the QR or visit wildlifelicense.utah.gov/hfo.



APPLY FOR BIG GAME PERMITS

Utah Admin. Rule R657-62-18

To participate in any of Utah's big game hunts, you need a hunting permit. Your first, and possibly only, chance to obtain one of these permits is through the state's big game drawing. You will avoid unnecessary stress if you plan ahead and apply for the drawing before the last day of the application period.

BIG GAME APPLICATION BEGINS

MARCH 21, 8 A.M. MDT

Application fees (per species):
Resident: \$10 • Nonresident: \$16



BIG GAME APPLICATION ENDS

APRIL 25, 11 P.M. MDT

Deadline to withdraw or edit your application



DRAWING RESULTS AVAILABLE

MAY 16



2nd CHANCE TO APPLY FOR BIG GAME BONUS/PREFERENCE POINTS

JUNE 5-19

During the antlerless application period



BIG GAME PERMITS MAILED

EARLY JULY



How to apply, edit or update:

Visit utah-hunt.com to apply, edit your application or update your debit/credit card

View drawing results at utah-hunt.com/UT_Returncard

What to know about applying:

- You must have a valid hunting/combo license to apply
 - If needed, you can buy a license at the same time you submit your application
- Edit your application at no charge anytime during the app period
 - Visit utah-hunt.com and click the *View, Edit and Withdraw* button
- Credit/debit cards must be valid through June 2024
 - The Division is not responsible for any bank charges incurred for the use of credit/debit cards
- Visit wildlife.utah.gov or call 800-221-0659 for application help
 - You can also call any Division office before 5 p.m. MDT on April 25.

Residency requirements:

To apply as a Utah resident in the big game application, you must be a resident by the purchase date of the permit, which for big game is May 16, 2024.

See page 79 for the residency definition.

PURCHASE OVER-THE-COUNTER PERMITS

Utah Admin. Rule R657-62-18

Any permits remaining after the big game drawing—and all general-season elk permits—are available on different days throughout July. There are also a few other options for permits sold over the counter which you can take advantage of.

Browse available permits:

In late May, you can find a full list of available permits at wildlife.utah.gov/remaining-permits

What to know about purchasing these over-the-counter permits:

- Permits go on sale at 8 a.m. MDT
- You must have a valid hunting/combo license to purchase a permit
- Purchase permits online at wildlife.utah.gov, or in person at any DWR office or license agent
- Permits are sold on a first-come, first-served basis

Important reminder about point loss:

- If you purchase a remaining permit from the hunt drawing, you will lose your bonus/preference points
 - This includes remaining general-season buck deer permits
 - This excludes youth archery deer permits

OVER-THE-COUNTER SALES DATES

JULY 9

- General-season archery elk permits
- Youth general-season elk permits
- Remaining limited-entry big game permits (if available)
- Remaining general-season buck deer permits (if available)
- Youth archery general-season buck deer permits
- Bison permits for the Nine Mile unit

JULY 11

- General-season any bull elk permits

JULY 18

- General-season spike bull elk permits
- Multi-season spike bull elk permits

JULY 23

- Remaining antlerless permits (if available)
- Antlerless elk control permits
- Private-lands-only antlerless elk permits

AFTER YOU APPLY

Utah Admin. Rule R657-62-18

After the application period ends, the hunt drawing occurs. We appreciate your patience throughout the drawing process and in awaiting your results.

Updating your personal information

A lot of things can change while you're waiting to find out if you drew a permit. If you need to update your name (because of marriage or divorce), your address or the credit card number associated with your application, please call 800-221-0659 or visit utah-hunt.com.

Obtaining your drawing results

You will receive an email that contains your drawing results on May 16, 2024. You can also learn your drawing results by visiting wildlife.utah.gov or by calling 800-221-0659.

To protect applicants' privacy—and to comply with governmental records access laws—you'll receive access to only your own drawing results.

Obtaining permits

If you draw a permit in the big game drawing, you'll receive your permit in the mail in July.

If your permit requires you to complete an online orientation course, you must first complete the course in order to receive your permit.

Reminder: If you obtain a general-season buck deer permit over the counter (after the big game drawing), you will lose any preference points you've previously accrued for buck deer.

Please be aware that if you receive your permit, and then the credit card you used for payment is refused, your permit is not valid. To update the credit card number associated with your application, please call 800-221-0659 or visit utah-hunt.com.

Surrendering permits

Utah Code § 23A-4-207 and Utah Admin. Rule R657-42-4

What happens if you obtain a permit and then realize you won't be able to use it?

If your season hasn't started, you should consider surrendering the permit. If you surrender early enough, you'll be able to keep your bonus points or preference points and avoid a waiting period.

Reminder: If you want to surrender your big game permit, you are strongly encouraged to do so **at least 30 days before the season opens**. The surrender process has changed and could result in the loss of previously accrued bonus or preference points. Learn more below or visit wildlife.utah.gov/refund.

Individuals

How permit surrender affects bonus and preference points

If you surrender a big game permit at least 30 days before the start of the season, you'll get all of your previously accrued bonus or preference points for that species/permit back, but you will not earn a point for the current year. **Important: If you surrender a big game permit less than 30 days before the season opens, you will lose all of your previously accrued bonus or preference points for that species/permit and you will not earn a point for the current year.**

As long as you surrender a big game permit before the season opens, any applicable waiting period(s) will be waived.

Groups

How permit surrender affects bonus and preference points

If you obtain a permit through a group application—and then you decide to surrender it—you will not have your bonus or preference points reinstated unless your **entire** group meets the following conditions:

- All group members must surrender their permits.
- Permit surrenders must occur at least 30 days before the start of the season.

Note: Even if you meet the above conditions, you will not earn a point for the current year.

Important: If some of your group members surrender their permits **less than 30 days** from the season opener, **all** group members will lose **all** of their bonus or preference points.

Members of the group may not surrender their permits individually unless the surrender occurs because of:

- Activation in the military
- An injury/illness that will prevent the individual from hunting
- Death

How permit surrender affects waiting periods

If members of a group surrender their permits before the season begins, the waiting period will be waived. General-season permits are not subject to waiting periods.

Dedicated Hunters

If you're enrolled in the Dedicated Hunter program, and you decide to surrender your permit, you must return it to the Division before Aug. 17, 2024 (the day the general-season archery deer hunt opens).

Plan on sharing the mountain

As much as you'd like to have Utah's backcountry to yourself, you share it with campers, hikers, photographers and other hunters. Some of those hunters are after big game—just like you—while others are pursuing black bear, forest grouse and other species.

Everyone shares the landscape, so please be patient and considerate when encountering others on public land.

Private landowner and CWMU permit holders

If you obtain a limited-entry landowner permit or a private CWMU permit, you can surrender it.

Limited-entry private landowner permits must be surrendered before the season the permit was issued for opens.

To surrender a private CWMU permit, there are two options. If possible, you should surrender your CWMU permit before the CWMU season opening dates listed on page 12.

To surrender your permit after the CWMU season has started, but before you hunt, you and the CWMU operator must both sign an affidavit stating that you did not hunt with the permit. Both of the signatures must be notarized.

After the signatures are notarized, submit the affidavit and the unused permit to the Division.

Permit refunds and exchanges

Utah Code § 23A-4-207 & Utah Admin. Rule R657-42

The Division rarely issues refunds for permits, licenses or certificates of registration, but there are some exceptions. To see if you're eligible for a refund, visit wildlife.utah.gov/refund.

Reminder: If you are eligible for a refund, you must submit all required forms and accompanying paperwork within 90 days of the season ending in order to qualify for a full refund.

Permit exchanges

You may exchange your general-season deer or elk permit for one that's available in another unit, but it must be for the same species and sex. For example, you cannot exchange a buck deer permit for a bull elk permit. The exchange must occur before the season opening date on the permit you originally obtained.

You must also pay a \$10 handling fee to exchange a permit.

Duplicate licenses

Utah Code § 23A-4-208 & Utah Admin. Rule R657-5-5

If your unexpired license or permit is destroyed, lost or stolen, you can obtain a duplicate from a Division office or a license agent for \$10 or half of the price of the original license or permit, whichever is less.

If you drew a license or permit, but you never received it, the Division may waive the fee that you would normally have to pay to get a duplicate.

Keep in mind that you can also use the Utah Hunting and Fishing app to legally carry hunting or combination licenses on a phone or tablet for all the members of your family. To download the app, visit wildlife.utah.gov/mobileapp.

Lifetime license holders: Obtaining your permit in 2024

Utah Admin. Rule R657-17

Lifetime licenses were last sold in Utah in 1994. If you are one of the lucky hunters who has a lifetime license, the Division wants you to obtain your deer permit as quickly and smoothly as possible:

- To select the unit you want to hunt, you'll need to complete the online lifetime license questionnaire. The questionnaire is located in the 2024 big game application. Visit wildlife.utah.gov between March 21 and April 25, 2024 to access the application, complete the questionnaire and select a unit.
- If you do not complete the lifetime license questionnaire by April 25, 2024, you will automatically receive a permit for the unit you selected in 2023.
- If you did not select a general-season unit in the past three years, and you do not complete your lifetime license questionnaire in 2024, you may obtain a remaining permit at a Division office, starting July 9.
- If your address changes, please notify the Division immediately.
- If you are already enrolled in the Dedicated Hunter program, you are not required to complete your lifetime license questionnaire.
- If you are planning to apply for the Dedicated Hunter program in 2024, you must complete your lifetime license questionnaire.

For more information about lifetime licenses, visit wildlife.utah.gov/lifetime.

DEDICATED HUNTER PROGRAM

Utah Admin. Rule R657-38

Enjoy more hunting opportunities and help Utah wildlife.

Want to spend more time hunting deer in Utah? Consider applying for the Dedicated Hunter program.

As a participant, you could enjoy up to three consecutive years hunting the same general-season deer unit and help Utah wildlife.

Benefits and requirements

As a Dedicated Hunter, you'll complete specific requirements in each of the three years you participate to obtain your deer permit.

Then, you'll be able to use your permit to hunt during all of the general deer seasons: archery, muzzleloader and any legal weapon (rifle).

In exchange for this opportunity, participants:

- Complete a wildlife conservation ethics course.
- Complete at least 32 volunteer hours on Division-approved service projects during the three-year period.
- May harvest a deer in two of the three years of program participation.

New this year: Applicants to the Dedicated Hunter program are no longer required to complete an orientation course before applying for the program in the big game drawing. Instead, you will acknowledge and agree to the program requirements as part of your application. Additionally, there are new minimum annual service requirements during each year you are enrolled.

Please visit wildlife.utah.gov/dh for more information about these changes to the program.

Joining the program

Participants join the Dedicated Hunter program by applying in the annual big game drawing. Online applications for the Dedicated Hunter program will be accepted from March 21–April 25, 2024 (as part of the 2024 big game application process). Results of the drawing will be available on May 16, 2024.

The application fee is \$10 for residents and \$16 for nonresidents. If your application is drawn, you will be charged the appropriate program fee. (Dedicated Hunter program fees are listed on page 15.) You may apply as an individual or in groups of up to four hunters.

Dedicated Hunter preference points

If you apply for the Dedicated Hunter program in 2024, and you aren't selected to participate, you'll receive a Dedicated Hunter preference point, which will give you a better chance at getting into the program in a future year.

If you don't want to join the program this year—but you'd like a better chance at participating in the future—just apply for a Dedicated Hunter preference point.

For additional details about the program, please visit wildlife.utah.gov/dh.

OPPORTUNITIES FOR YOUNG HUNTERS

In 2024, there are many options for youth who want to hunt big game.

Hunting deer for multiple seasons

Twenty percent of Utah’s general-season buck deer permits are allocated to youth in the big game drawing. For the purposes of big game hunting, you are a youth if you will be 17 years of age or younger on July 31.

Any legal weapon permits

If you are a youth who obtains a general-season any legal weapon deer permit (**for either the early season or the later, traditional season**), you may hunt during all general seasons for buck deer including archery, extended archery (course required), muzzleloader and any legal weapon seasons.

See the table below for full details on which seasons a youth may hunt with their any legal weapon permit.

Muzzleloader permits

If you obtain a general-season muzzleloader deer permit, you may hunt only during the general muzzleloader season, which runs

from Sept. 25–Oct. 3, 2024. You must use muzzleloader equipment and hunt the unit listed on your permit. You may not hunt during the general archery season or either of the any legal weapon seasons.

Archery permits

If you obtain a general-season archery deer permit, you may hunt **only** during the general archery deer season and the extended archery deer season.

On July 9, additional youth-only archery deer permits will also be available for purchase over the counter at all DWR offices and license agent locations, or online at wildlife.utah.gov.

Reminder: Youth who purchase these additional youth archery deer permits will not lose any preference points they’ve accrued for general-season buck deer.

Important: If you obtain a general-season archery deer permit, you may hunt only during the general archery deer season and the extended archery deer season.

YOUTH DEER SEASONS	Early any legal weapon buck deer permit (Oct. 9–13)	Any legal weapon buck deer permit (Oct. 19–27)
Archery season (Aug. 17–Sept. 13)	May hunt on your unit with archery equipment.	
Muzzleloader season (Sept. 25–Oct. 3)	May hunt on your unit with muzzleloader equipment.	
Early any legal weapon season (Oct. 9–13)	May hunt on your unit with any legal weapon.	May hunt with any legal weapon if your unit offers the early season.*
Any legal weapon season (Oct. 19–27)	May hunt on your unit with any legal weapon.	
Extended archery seasons	May hunt the extended archery areas with archery equipment. [^]	

* See the list of early-season hunts in the table on page 43.

[^] For information about extended archery hunting and the required ethics course, see page 8.

General-season youth elk permits

In 2024, there will be an unlimited number of general-season youth elk permits available for youth who will be 17 years of age or younger on July 31, 2024. **Remember:** These permits will be valid during all general seasons on both any bull and spike units.

See the table below for full details about which seasons a youth can hunt with their general-season elk permit.

Visit wildlife.utah.gov/biggame in early June to see purchase times and locations.

Draw-only youth any bull/hunter's choice elk permits

Youth who want to participate in the draw-only youth any bull/hunter's choice elk hunt must apply for permits in the big game hunt drawing. If you draw a permit, you may harvest either a bull elk or an antlerless elk from Sept. 14–22, 2024 in the unit listed on your permit.

These permits are not valid for the general-season (over-the-counter) elk hunts. See the table below for full details of which season a youth can hunt with this permit.

Youth-only groups

If you will be 17 years of age or younger on July 31, 2024, you can participate in the youth drawing for general-season deer permits or the draw-only youth elk permits. You can submit an application as an individual hunter or as a member of a youth-only group.

When you apply in a youth-only group for the general-season deer hunt or the draw-only youth elk hunt, all hunters must meet the age requirement or the application will not be processed with the other youth applications.

If you're successful in drawing permits, please remember that all hunters under the age of 16 must be accompanied in the field by a parent, legal guardian or responsible person 21 years of age or older. For details on this requirement, see page 16.

For more about youth-only group applications, visit wildlife.utah.gov/huntingpermits.

YOUTH ELK SEASONS	General-season youth elk permit (over the counter)	Draw-only youth any bull/hunter's choice elk permit
Archery season—any bull units (Aug. 17–Sept. 18)	✓	
Archery season—spike-only units (Aug. 17–Sept. 6)	✓	
Any legal weapon/hunter's choice season—any bull units (Sept. 14–Sept. 22)		✓
Early any legal weapon season—any bull units (Oct. 5–Oct. 11)	✓	
Late any legal weapon season—any bull units (Oct. 12–Oct. 18)	✓	
Any legal weapon season—spike-only units (Oct. 5–Oct. 17)	✓	
Muzzleloader season—any bull & spike-only units (Oct. 30–Nov. 7)	✓	
Extended archery seasons [^]	✓	

[^] For information about extended archery hunting and the required ethics course, see page 8.

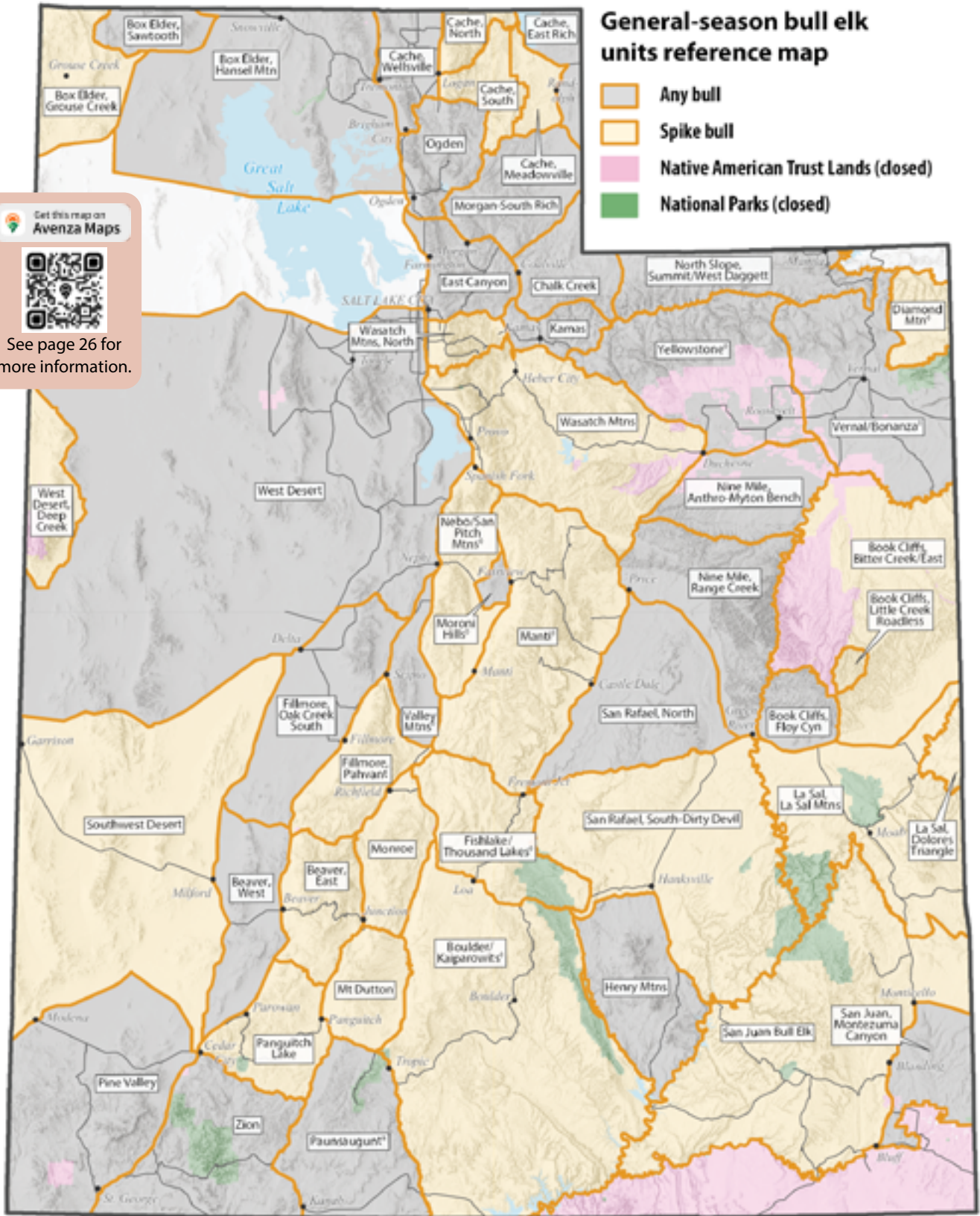
General-season bull elk units reference map

- Any bull
- Spike bull
- Native American Trust Lands (closed)
- National Parks (closed)

Get this map on Avenza Maps

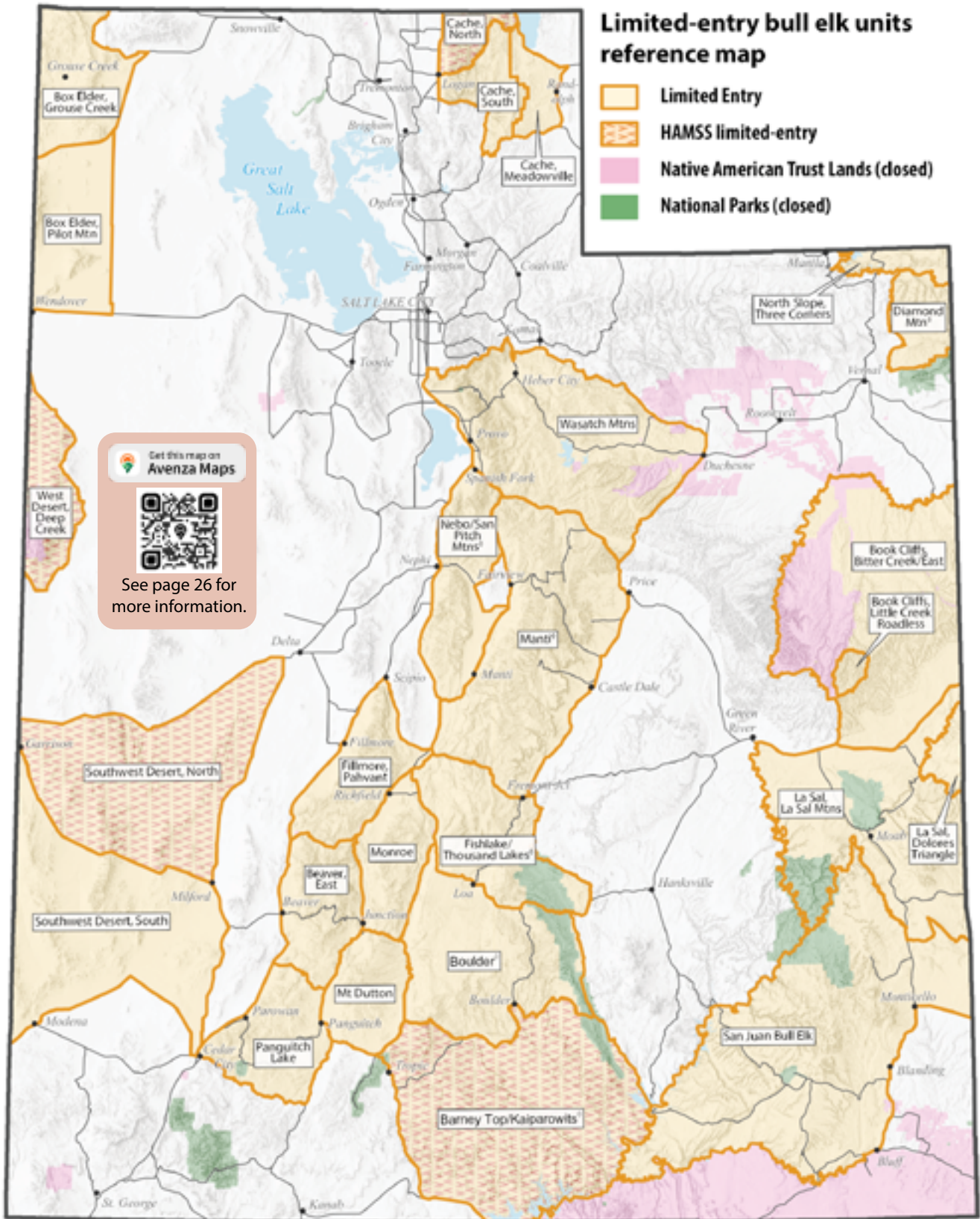


See page 26 for more information.



*No general-season archery elk hunt on the Pausaugunt unit.

This map is for general reference only. Please visit hunt.utah.gov for detailed boundary descriptions. All hunt units **exclude** deer CWMUs, Native American Trust Lands, National Parks and other areas closed to hunting. ♦ Hunt unit name has been modified, hunt number is the same as previous years.



This map is for general reference only. Please visit hunt.utah.gov for detailed boundary descriptions. All hunt units **exclude** deer CWMUs, Native American Trust Lands, National Parks and other areas closed to hunting. ◊ Hunt unit name has been modified, hunt number is the same as previous years.

BUCK DEER HUNT TABLES

The Division does not guarantee access to any private or public land. Hunt unit boundaries may include private property or other excluded areas. Hunters must research land accessibility before hunting.

GENERAL-SEASON BUCK DEER

Permit fee: Resident \$46, Nonresident \$418

Use the hunt number to apply. Deer preference point code: **GDR**

Archery hunts

Hunt name	Hunt #	Season dates
Beaver	DB1500	Aug. 17–Sept. 13
Boulder/Kaiparowits [◊]	DB1518	Aug. 17–Sept. 13
Box Elder	DB1501	Aug. 17–Sept. 13
Cache (includes Cache, Crawford Mtn)	DB1502	Aug. 17–Sept. 13
Chalk Creek	DB1600	Aug. 17–Sept. 13
East Canyon	DB1604	Aug. 17–Sept. 13
Fillmore	DB1506	Aug. 17–Sept. 13
Fishlake [◊]	DB1519	Aug. 17–Sept. 13
Kamas	DB1508	Aug. 17–Sept. 13
La Sal, La Sal Mtns	DB1509	Aug. 17–Sept. 13
Manti/San Rafael [◊]	DB1503	Aug. 17–Sept. 13
Monroe	DB1510	Aug. 17–Sept. 13
Morgan-South Rich	DB1608	Aug. 17–Sept. 13
Mt Dutton	DB1511	Aug. 17–Sept. 13
Nebo [◊]	DB1504	Aug. 17–Sept. 13
Nine Mile*	DB1512	Aug. 17–Sept. 13
North Slope	DB1513	Aug. 17–Sept. 13
Ogden	DB1514	Aug. 17–Sept. 13
Oquirrh-Stansbury	DB1515	Aug. 17–Sept. 13
Panguitch Lake	DB1516	Aug. 17–Sept. 13
Pine Valley	DB1517	Aug. 17–Sept. 13
San Juan, Abajo Mtns	DB1521	Aug. 17–Sept. 13
Southwest Desert	DB1524	Aug. 17–Sept. 13
Thousand Lakes [◊]	DB1520	Aug. 17–Sept. 13

[◊] Hunt unit name has been modified, hunt number is the same as previous years.

* In the general season, a portion of the Myton unit is part of this unit. For details see hunt.utah.gov.

BUCK DEER HUNT TABLES

The Division does not guarantee access to any private or public land. Hunt unit boundaries may include private property or other excluded areas. Hunters must research land accessibility before hunting.

GENERAL-SEASON BUCK DEER

Archery hunts (continued)

Hunt name	Hunt #	Season dates
Vernal/Bonanza [◊]	DB1522	Aug. 17–Sept. 13
Wasatch Mtns, East	DB1525	Aug. 17–Sept. 13
Wasatch Mtns, West	DB1526	Aug. 17–Sept. 13
West Desert, Tintic	DB1527	Aug. 17–Sept. 13
West Desert, West	DB1528	Aug. 17–Sept. 13
Yellowstone ^{◊*}	DB1523	Aug. 17–Sept. 13
Zion	DB1529	Aug. 17–Sept. 13

Any legal weapon (rifle) — early hunts

Hunt name	Hunt #	Season dates
Chalk Creek	DB1601	Oct. 9–Oct. 13
East Canyon	DB1605	Oct. 9–Oct. 13
Fillmore	DB1591	Oct. 9–Oct. 13
Fishlake [◊]	DB1596	Oct. 9–Oct. 13
Kamas	DB1592	Oct. 9–Oct. 13
Morgan-South Rich	DB1609	Oct. 9–Oct. 13
Nine Mile [*]	DB1593	Oct. 9–Oct. 13
North Slope	DB1598	Oct. 9–Oct. 13
Panguitch Lake	DB1594	Oct. 9–Oct. 13
Pine Valley	DB1595	Oct. 9–Oct. 13
Zion	DB1597	Oct. 9–Oct. 13

Any legal weapon (rifle) hunts

Hunt name	Hunt #	Season dates
Beaver	DB1530	Oct. 19–Oct. 27
Boulder/Kaiparowits [◊]	DB1548	Oct. 19–Oct. 27
Box Elder	DB1531	Oct. 19–Oct. 27
Cache (includes Cache, Crawford Mtn)	DB1532	Oct. 19–Oct. 27

[◊] Hunt unit name has been modified, hunt number is the same as previous years.

^{*} In the general season, a portion of the Myton unit is part of this unit. For details see hunt.utah.gov.

BUCK DEER HUNT TABLES

The Division does not guarantee access to any private or public land. Hunt unit boundaries may include private property or other excluded areas. Hunters must research land accessibility before hunting.

GENERAL-SEASON BUCK DEER

Any legal weapon (rifle) hunts (continued)

Hunt name	Hunt #	Season dates
Chalk Creek	DB1599	Oct. 19–Oct. 27
East Canyon	DB1603	Oct. 19–Oct. 27
Fillmore	DB1536	Oct. 19–Oct. 27
Fishlake [◇]	DB1549	Oct. 19–Oct. 27
Kamas	DB1538	Oct. 19–Oct. 27
La Sal, La Sal Mtns	DB1539	Oct. 19–Oct. 27
Manti/San Rafael [◇]	DB1533	Oct. 19–Oct. 27
Monroe	DB1540	Oct. 19–Oct. 27
Morgan–South Rich	DB1607	Oct. 19–Oct. 27
Mt Dutton	DB1541	Oct. 19–Oct. 27
Nebo [◇]	DB1534	Oct. 19–Oct. 27
Nine Mile*	DB1542	Oct. 19–Oct. 27
North Slope	DB1543	Oct. 19–Oct. 27
Ogden	DB1544	Oct. 19–Oct. 27
Oquirrh–Stansbury	DB1545	Oct. 19–Oct. 27
Panguitch Lake	DB1546	Oct. 19–Oct. 27
Pine Valley	DB1547	Oct. 19–Oct. 27
San Juan, Abajo Mtns	DB1551	Oct. 19–Oct. 27
Southwest Desert	DB1554	Oct. 19–Oct. 27
Thousand Lakes [◇]	DB1550	Oct. 19–Oct. 27
Vernal/Bonanza [◇]	DB1552	Oct. 19–Oct. 27
Wasatch Mtns, East	DB1555	Oct. 19–Oct. 27
Wasatch Mtns, West	DB1556	Oct. 19–Oct. 27
West Desert, Tintic	DB1557	Oct. 19–Oct. 27
West Desert, West	DB1558	Oct. 19–Oct. 27
Yellowstone ^{◇*}	DB1553	Oct. 19–Oct. 27
Zion	DB1559	Oct. 19–Oct. 27

[◇] Hunt unit name has been modified, hunt number is the same as previous years.

* In the general season, a portion of the Myton unit is part of this unit. For details see hunt.utah.gov.

BUCK DEER HUNT TABLES

The Division does not guarantee access to any private or public land. Hunt unit boundaries may include private property or other excluded areas. Hunters must research land accessibility before hunting.

GENERAL-SEASON BUCK DEER

Muzzleloader hunts

Hunt name	Hunt #	Season dates
Beaver	DB1560	Sept. 25–Oct. 3
Boulder/Kaiparowits [◊]	DB1578	Sept. 25–Oct. 3
Box Elder	DB1561	Sept. 25–Oct. 3
Cache (includes Cache, Crawford Mtn)	DB1562	Sept. 25–Oct. 3
Chalk Creek	DB1602	Sept. 25–Oct. 3
East Canyon	DB1606	Sept. 25–Oct. 3
Fillmore	DB1566	Sept. 25–Oct. 3
Fishlake [◊]	DB1579	Sept. 25–Oct. 3
Kamas	DB1568	Sept. 25–Oct. 3
La Sal, La Sal Mtns	DB1569	Sept. 25–Oct. 3
Manti/San Rafael [◊]	DB1563	Sept. 25–Oct. 3
Monroe	DB1570	Sept. 25–Oct. 3
Morgan-South Rich	DB1610	Sept. 25–Oct. 3
Mt Dutton	DB1571	Sept. 25–Oct. 3
Nebo [◊]	DB1564	Sept. 25–Oct. 3
Nine Mile*	DB1572	Sept. 25–Oct. 3
North Slope	DB1573	Sept. 25–Oct. 3
Ogden	DB1574	Sept. 25–Oct. 3
Oquirrh-Stansbury	DB1575	Sept. 25–Oct. 3
Panguitch Lake	DB1576	Sept. 25–Oct. 3
Pine Valley	DB1577	Sept. 25–Oct. 3
San Juan, Abajo Mtns	DB1581	Sept. 25–Oct. 3
Southwest Desert	DB1584	Sept. 25–Oct. 3
Thousand Lakes [◊]	DB1580	Sept. 25–Oct. 3
Vernal/Bonanza [◊]	DB1582	Sept. 25–Oct. 3
Wasatch Mtns, East	DB1585	Sept. 25–Oct. 3
Wasatch Mtns, West	DB1586	Sept. 25–Oct. 3

[◊] Hunt unit name has been modified, hunt number is the same as previous years.

* In the general season, a portion of the Myton unit is part of this unit. For details see hunt.utah.gov.

BUCK DEER

HUNT TABLES

The Division does not guarantee access to any private or public land. Hunt unit boundaries may include private property or other excluded areas. Hunters must research land accessibility before hunting.

GENERAL-SEASON BUCK DEER

Muzzleloader hunts (continued)

Hunt name	Hunt #	Season dates
West Desert, Tintic	DB1587	Sept. 25–Oct. 3
West Desert, West	DB1588	Sept. 25–Oct. 3
Yellowstone ^{◇*}	DB1583	Sept. 25–Oct. 3
Zion	DB1589	Sept. 25–Oct. 3

DEDICATED HUNTER BUCK DEER

Permit fees: Resident Adult \$215, Resident Youth \$120,
Nonresident Adult \$1,067, Nonresident Youth \$834

Use the hunt number to apply. Dedicated Hunter point code: **DHL**

Hunt name	Hunt #
Beaver	DB1769
Boulder/Kaiparowits [◇]	DB1787
Box Elder	DB1770
Cache (includes Cache, Crawford Mtn)	DB1771
Chalk Creek	DB1799
East Canyon	DB1800
Fillmore	DB1775
Fishlake [◇]	DB1788
Kamas	DB1777
La Sal, La Sal Mtns	DB1778
Manti/San Rafael [◇]	DB1772
Monroe	DB1779
Morgan-South Rich	DB1801
Mt Dutton	DB1780
Nebo [◇]	DB1773
Nine Mile*	DB1781
North Slope	DB1782
Ogden	DB1783

[◇] Hunt unit name has been modified, hunt number is the same as previous years.

* In the general season, a portion of the Myton unit is part of this unit. For details see hunt.utah.gov.

BUCK DEER
HUNT TABLES

The Division does not guarantee access to any private or public land. Hunt unit boundaries may include private property or other excluded areas. Hunters must research land accessibility before hunting.

DEDICATED HUNTER BUCK DEER (continued)

Hunt name	Hunt #
Oquirrh-Stansbury	DB1784
Panguitch Lake	DB1785
Pine Valley	DB1786
San Juan, Abajo Mtns	DB1790
Southwest Desert	DB1793
Thousand Lakes [◊]	DB1789
Vernal/Bonanza [◊]	DB1791
Wasatch Mtns, East	DB1794
Wasatch Mtns, West	DB1795
West Desert, Tintic	DB1796
West Desert, West	DB1797
Yellowstone ^{◊*}	DB1792
Zion	DB1798

◊ Hunt unit name has been modified, hunt number is the same as previous years.

**In the general season, a portion of the Myton unit is part of this unit. For details see hunt.utah.gov.*



Utah Turn in a Poacher

Reporting Options

Help us protect your wildlife. The following methods are available to report a suspected wildlife crime.

Call

800-662-3337

Text

847411

Use the **UTDWR app**

Download on the **App Store** | Get it from **Google Play**

UTiP

To submit a report online, scan the QR code to the left or visit wildlife.utah.gov/utip.

BUCK DEER HUNT TABLES

The Division does not guarantee access to any private or public land. Hunt unit boundaries may include private property or other excluded areas. Hunters must research land accessibility before hunting.

PREMIUM LIMITED-ENTRY BUCK DEER

Permit fee: Resident \$185, Nonresident \$798

Use the hunt number to apply. Deer bonus point code: **DEE**

Archery hunts

Hunt name	Hunt #	Season dates
Henry Mtns	DB1000	Aug. 17–Sept. 13
Paunsaugunt*	DB1001	Aug. 17–Sept. 13

Any legal weapon (rifle) hunts

Hunt name	Hunt #	Season dates
Antelope Island	DB1002	Nov. 13–Nov. 20
Henry Mtns	DB1003	Oct. 19–Oct. 27
Paunsaugunt	DB1004	Oct. 19–Oct. 31

Muzzleloader hunts

Hunt name	Hunt #	Season dates
Henry Mtns	DB1005	Sept. 25–Oct. 3
Paunsaugunt*	DB1006	Sept. 25–Oct. 3

Multi-season hunts

Permit fee: Resident \$305, Nonresident \$1,330

Use the hunt number to apply. Deer bonus point code: **DEE**

Hunt name	Hunt #	Season dates
Henry Mtns	DB1007	All Limited Entry Seasons
Paunsaugunt*	DB1008	All Limited Entry Seasons

** A management buck hunt will occur during a portion of this premium limited-entry hunt. See page 49 for a list of all management buck deer hunts and season dates.*

BLACK TEXT: At least one nonresident permit • BLUE TEXT: Resident permits only

BUCK DEER HUNT TABLES

The Division does not guarantee access to any private or public land. Hunt unit boundaries may include private property or other excluded areas. Hunters must research land accessibility before hunting.

MANAGEMENT AND CACTUS BUCK DEER

Permit fee: Permit fee: Resident \$94, Nonresident \$670

Use the hunt number to apply. Use bonus point code: **DEE**

Management buck hunts

Hunt name	Hunt #	Season dates
Paunsaugunt (archery)	DB1073	Aug. 24–Sept. 13
Paunsaugunt (muzzleloader)	DB1074	Sept. 27–Oct. 2
Paunsaugunt (any legal weapon)	DB1010	Oct. 30–Nov. 3

Cactus buck hunt

Hunt name	Hunt #	Season dates
Paunsaugunt	DB1058	Nov. 2–Nov. 17

LIMITED-ENTRY BUCK DEER

Permit fee: Resident \$94, Nonresident \$670

Use the hunt number to apply. Use bonus point code: **DEE**

Archery hunts

Hunt name	Hunt #	Season dates
Book Cliffs	DB1011	Aug. 17–Sept. 13
Diamond Mtn [◇]	DB1015	Aug. 17–Sept. 13
Fillmore, Oak Creek LE	DB1012	Aug. 17–Sept. 13
La Sal, Dolores Triangle	DB1013	Nov. 2–Nov. 15
San Juan, Elk Ridge	DB1014	Aug. 17–Sept. 13
West Desert, Vernon	DB1016	Aug. 17–Sept. 13

[◇] Hunt unit name has been modified, hunt number is the same as previous years.

BLACK TEXT: At least one nonresident permit • BLUE TEXT: Resident permits only

BUCK DEER HUNT TABLES

The Division does not guarantee access to any private or public land. Hunt unit boundaries may include private property or other excluded areas. Hunters must research land accessibility before hunting.

LIMITED-ENTRY BUCK DEER

Any legal weapon (rifle) hunts

Hunt name	Hunt #	Season dates
Book Cliffs, North	DB1017	Oct. 19–Oct. 27
Book Cliffs, South	DB1018	Oct. 19–Oct. 27
Diamond Mtn [◇]	DB1023	Oct. 19–Oct. 27
Fillmore, Oak Creek LE	DB1019	Oct. 19–Oct. 27
La Sal, Dolores Triangle	DB1020	Nov. 16–Nov. 24
San Juan, Elk Ridge	DB1022	Oct. 19–Oct. 27
West Desert, Vernon	DB1024	Oct. 19–Oct. 27

Muzzleloader hunts

Hunt name	Hunt #	Season dates
Book Cliffs	DB1025	Sept. 25–Oct. 3
Cache, Crawford Mtn	DB1026	Nov. 9–Nov. 24
Diamond Mtn [◇]	DB1038	Sept. 25–Oct. 3
Fillmore, Oak Creek LE	DB1029	Sept. 25–Oct. 3
La Sal, Dolores Triangle	DB1031	Nov. 27–Dec. 5
San Juan, Elk Ridge	DB1037	Sept. 25–Oct. 3
West Desert, Vernon	DB1042	Sept. 25–Oct. 3

[◇] Hunt unit name has been modified, hunt number is the same as previous years.

BLACK TEXT: At least one nonresident permit • BLUE TEXT: Resident permits only

BUCK DEER HUNT TABLES

The Division does not guarantee access to any private or public land. Hunt unit boundaries may include private property or other excluded areas. Hunters must research land accessibility before hunting.

LIMITED-ENTRY BUCK DEER

Muzzleloader hunts on general-season units

Hunt name	Hunt #	Season dates
Beaver	DB1059	Oct. 30–Nov. 7
Boulder/Kaiparowits [◇]	DB1084	Oct. 30–Nov. 7
Box Elder	DB1077	Oct. 30–Nov. 7
Cache (includes Cache, Crawford Mtn)	DB1078	Oct. 30–Nov. 7
Chalk Creek	DB1100	Oct. 30–Nov. 7
East Canyon	DB1101	Oct. 30–Nov. 7
Fillmore	DB1028	Oct. 30–Nov. 7
Fishlake [◇]	DB1055	Oct. 30–Nov. 7
Kamas	DB1030	Oct. 30–Nov. 7
La Sal, La Sal Mtns	DB1081	Oct. 30–Nov. 7
Manti/San Rafael [◇]	DB1079	Oct. 30–Nov. 7
Monroe	DB1032	Oct. 30–Nov. 7
Morgan–South Rich	DB1103	Oct. 30–Nov. 7
Mt Dutton	DB1053	Oct. 30–Nov. 7
Myton^{◇†}	DB1094	Nov. 9–Nov. 24
Nebo [◇]	DB1080	Oct. 30–Nov. 7
Nine Mile*	DB1033	Oct. 30–Nov. 7
North Slope	DB1065	Oct. 30–Nov. 7
Ogden	DB1054	Oct. 30–Nov. 7
Oquirrh–Stansbury	DB1082	Oct. 30–Nov. 7
Panguitch Lake	DB1083	Oct. 30–Nov. 7
Pine Valley	DB1034	Oct. 30–Nov. 7
San Juan, Abajo Mtns	DB1085	Oct. 30–Nov. 7
Southwest Desert	DB1040	Oct. 30–Nov. 7

[◇] Hunt unit name has been modified, hunt number is the same as previous years.

[†] This unit is composed of all or largely private property. Hunters should acquire written permission from the landowner before applying for this hunt.

* In the general season, a portion of the Myton unit is part of this unit. For details see hunt.utah.gov.

BLACK TEXT: At least one nonresident permit • BLUE TEXT: Resident permits only

BUCK DEER HUNT TABLES

The Division does not guarantee access to any private or public land. Hunt unit boundaries may include private property or other excluded areas. Hunters must research land accessibility before hunting.

LIMITED-ENTRY BUCK DEER

Muzzleloader hunts on general-season units (continued)

Hunt name	Hunt #	Season dates
Thousand Lakes [◇]	DB1036	Oct. 30–Nov. 7
Vernal/Bonanza [◇]	DB1086	Oct. 30–Nov. 7
Wasatch Mtns, East	DB1041	Oct. 30–Nov. 7
Wasatch Mtns, West	DB1087	Oct. 30–Nov. 7
West Desert, Tintic	DB1088	Oct. 30–Nov. 7
West Desert, West	DB1089	Oct. 30–Nov. 7
Yellowstone ^{◇*}	DB1039	Oct. 30–Nov. 7
Zion	DB1043	Oct. 30–Nov. 7

Multi-season hunts

Permit fee: Resident \$170, Nonresident \$1,130

Use the hunt number to apply. Deer bonus point code: **DEE**

Hunt name	Hunt #	Season dates
Book Cliffs	DB1044	All Limited Entry Seasons
Diamond Mtn [◇]	DB1047	All Limited Entry Seasons
Fillmore, Oak Creek LE	DB1045	All Limited Entry Seasons
San Juan, Elk Ridge	DB1046	All Limited Entry Seasons
West Desert, Vernon	DB1048	All Limited Entry Seasons

Handgun-archery-muzzleloader-shotgun-straight walled rifle-only (HAMSS) limited-entry buck deer hunts

Hunt name	Hunt #	Season dates
Book Cliffs, Floy Canyon	DB1090	Nov. 9–Nov. 24
East Canyon	DB1105	Nov. 9–Nov. 24
Kaiparowits HAMSS	DB1091	Nov. 9–Nov. 30

[◇] Hunt unit name has been modified, hunt number is the same as previous years.

*In the general season, a portion of the Myton unit is part of this unit. For details see hunt.utah.gov.

BLACK TEXT: At least one nonresident permit • BLUE TEXT: Resident permits only

BULL ELK HUNT TABLES

The Division does not guarantee access to any private or public land. Hunt unit boundaries may include private property or other excluded areas. Hunters must research land accessibility before hunting.

DRAW-ONLY YOUTH ANY BULL/HUNTER'S CHOICE ELK

Permit fee: Resident \$50, Nonresident \$613

Hunt name	Hunt #	Season dates
Draw-only youth any bull/hunter's choice elk*	EB1007	Sept. 14–Sept. 22

LIMITED-ENTRY BULL ELK

Permit fee: Resident \$314, Nonresident \$1,050

Use the hunt number to apply. Elk bonus point code: **ELK**

Archery hunts

Hunt name	Hunt #	Season dates
Beaver, East	EB3000	Aug. 21–Sept. 17
Book Cliffs, Bitter Creek/East	EB3160	Aug. 21–Sept. 17
Book Cliffs, Little Creek Roadless	EB3002	Aug. 21–Sept. 17
Boulder [◊]	EB3145	Aug. 21–Sept. 17
Box Elder, Pilot Mtn	EB3130	Aug. 17–Sept. 7
Cache, Meadowville [†]	EB3003	Aug. 21–Sept. 17
Cache, South	EB3005	Aug. 21–Sept. 17
Diamond Mtn [◊]	EB3020	Aug. 21–Sept. 17
Fillmore, Pahvant	EB3008	Aug. 21–Sept. 17
Fishlake/Thousand Lakes [◊]	EB3018	Aug. 21–Sept. 17
La Sal, La Sal Mtns	EB3009	Aug. 21–Sept. 17
Manti [◊]	EB3006	Aug. 21–Sept. 17
Monroe	EB3010	Aug. 21–Sept. 17
Mt Dutton	EB3011	Aug. 21–Sept. 17
Nebo/San Pitch Mtns [◊]	EB3173	Aug. 21–Sept. 17
North Slope, Three Corners	EB3013	Aug. 21–Sept. 17
Panguitch Lake	EB3015	Aug. 21–Sept. 17
San Juan Bull Elk	EB3019	Aug. 21–Sept. 17
Southwest Desert, South	EB3146	Aug. 21–Sept. 17
Wasatch Mtns	EB3022	Aug. 21–Sept. 17

[◊] Hunt unit name has been modified, hunt number is the same as previous years.

* This hunt overlaps the last part of the general-season archery any bull elk hunt, which runs until Sept. 17, 2024.

[†] This unit is composed of all or largely private property. Hunters should acquire written permission from the landowner before applying for this hunt.

BLACK TEXT: At least one nonresident permit • BLUE TEXT: Resident permits only

BULL ELK HUNT TABLES

The Division does not guarantee access to any private or public land. Hunt unit boundaries may include private property or other excluded areas. Hunters must research land accessibility before hunting.

LIMITED-ENTRY BULL ELK

September archery

Hunt name	Hunt #	Season dates
Barney Top/Kaiparowits [◇]	EB3135	Aug. 31–Sept. 30
Cache, North	EB3132	Aug. 31–Sept. 30
Southwest Desert, North	EB3136	Aug. 31–Sept. 30
West Desert, Deep Creek	EB3137	Aug. 31–Sept. 30

Archery hunts — late season

Note: Multi-season limited-entry elk permits are not valid on this late-season archery elk hunt.

Hunt name	Hunt #	Season dates
Beaver, East	EB3158	Nov. 30–Dec. 15
Book Cliffs, Bitter Creek/East	EB3161	Nov. 30–Dec. 15
Boulder [◇]	EB3190	Nov. 30–Dec. 15
Cache, Meadowville [†]	EB3168	Nov. 30–Dec. 15
Cache, South	EB3170	Nov. 30–Dec. 15
Diamond Mtn [◇]	EB3195	Nov. 30–Dec. 15
Fillmore, Pahvant	EB3180	Nov. 30–Dec. 15
Fishlake/Thousand Lakes [◇]	EB3192	Nov. 30–Dec. 15
La Sal, La Sal Mtns	EB3182	Nov. 30–Dec. 15
Manti [◇]	EB3172	Nov. 30–Dec. 15
Monroe	EB3184	Nov. 30–Dec. 15
Mt Dutton	EB3186	Nov. 30–Dec. 15
Nebo/San Pitch Mtns [◇]	EB3174	Nov. 30–Dec. 15
Panguitch Lake	EB3188	Nov. 30–Dec. 15
San Juan Bull Elk	EB3193	Nov. 30–Dec. 15
Southwest Desert, South	EB3197	Nov. 30–Dec. 15
Wasatch Mtns	EB3199	Nov. 30–Dec. 15

[◇] Hunt unit name has been modified, hunt number is the same as previous years.

[†] This unit is composed of all or largely private property. Hunters should acquire written permission from the landowner before applying for this hunt.

BLACK TEXT: At least one nonresident permit • **BLUE TEXT:** Resident permits only

BULL ELK HUNT TABLES

The Division does not guarantee access to any private or public land. Hunt unit boundaries may include private property or other excluded areas. Hunters must research land accessibility before hunting.

LIMITED-ENTRY BULL ELK

Any legal weapon (rifle) — early hunts

Hunt name	Hunt #	Season dates
Beaver, East	EB3024	Sept. 18–Sept. 22
Book Cliffs, Bitter Creek/East	EB3162	Sept. 18–Sept. 22
Book Cliffs, Little Creek Roadless	EB3028	Sept. 18–Sept. 22
Boulder [◊]	EB3148	Sept. 18–Sept. 22
Box Elder, Grouse Creek	EB3147	Sept. 18–Sept. 22
Box Elder, Pilot Mtn	EB3031	Sept. 21–Oct. 11
Cache, Meadowville [†]	EB3032	Sept. 18–Sept. 22
Cache, South	EB3036	Sept. 18–Sept. 22
Diamond Mtn [◊]	EB3068	Sept. 18–Sept. 22
Fillmore, Pahvant	EB3042	Sept. 18–Sept. 22
Fishlake/Thousand Lakes [◊]	EB3063	Sept. 18–Sept. 22
La Sal, La Sal Mtns	EB3045	Sept. 18–Sept. 22
Manti [◊]	EB3038	Sept. 18–Sept. 22
Monroe	EB3047	Sept. 18–Sept. 22
Mt Dutton	EB3049	Sept. 18–Sept. 22
Nebo/San Pitch Mtn [◊]	EB3175	Sept. 18–Sept. 22
Panguitch Lake	EB3056	Sept. 18–Sept. 22
San Juan Bull Elk	EB3066	Sept. 18–Sept. 22
Southwest Desert, South	EB3149	Sept. 18–Sept. 22
Wasatch Mtns	EB3072	Sept. 18–Sept. 22

[◊] Hunt unit name has been modified, hunt number is the same as previous years.

[†] This unit is composed of all or largely private property. Hunters should acquire written permission from the landowner before applying for this hunt.

BLACK TEXT: At least one nonresident permit • BLUE TEXT: Resident permits only

BULL ELK HUNT TABLES

The Division does not guarantee access to any private or public land. Hunt unit boundaries may include private property or other excluded areas. Hunters must research land accessibility before hunting.

LIMITED-ENTRY BULL ELK

Any legal weapon (rifle) — midseason hunts

Hunt name	Hunt #	Season dates
Beaver, East	EB3159	Oct. 5–Oct. 17
Book Cliffs, Bitter Creek/East	EB3164	Oct. 5–Oct. 17
Book Cliffs, Little Creek Roadless	EB3167	Oct. 5–Oct. 17
Boulder [◊]	EB3191	Oct. 5–Oct. 17
Box Elder, Grouse Creek	EB3150	Oct. 5–Oct. 17
Cache, Meadowville [†]	EB3169	Oct. 5–Oct. 17
Cache, South	EB3171	Oct. 5–Oct. 17
Diamond Mtn [◊]	EB3069	Oct. 5–Oct. 17
Fillmore, Pahvant	EB3181	Oct. 5–Oct. 17
Fishlake/Thousand Lakes [◊]	EB3064	Oct. 5–Oct. 17
La Sal, La Sal Mtns	EB3183	Oct. 5–Oct. 17
Manti [◊]	EB3126	Oct. 5–Oct. 17
Monroe	EB3185	Oct. 5–Oct. 17
Mt Dutton	EB3187	Oct. 5–Oct. 17
Nebo/San Pitch Mtn [◊]	EB3177	Oct. 5–Oct. 17
North Slope, Three Corners	EB3053	Oct. 5–Oct. 17
Panguitch Lake	EB3189	Oct. 5–Oct. 17
San Juan Bull Elk	EB3194	Oct. 5–Oct. 17
Southwest Desert, South	EB3198	Oct. 5–Oct. 17
Wasatch Mtns	EB3127	Oct. 5–Oct. 17

[◊] Hunt unit name has been modified, hunt number is the same as previous years.

[†] This unit is composed of all or largely private property. Hunters should acquire written permission from the landowner before applying for this hunt.

BLACK TEXT: At least one nonresident permit • **BLUE TEXT:** Resident permits only

BULL ELK HUNT TABLES

The Division does not guarantee access to any private or public land. Hunt unit boundaries may include private property or other excluded areas. Hunters must research land accessibility before hunting.

LIMITED-ENTRY BULL ELK

Any legal weapon (rifle) — late hunts

Hunt name	Hunt #	Season dates
Beaver, East	EB3025	Nov. 9–Nov. 17
Book Cliffs, Bitter Creek/East	EB3163	Nov. 9–Nov. 17
Boulder [◇]	EB3151	Nov. 9–Nov. 17
Cache, Meadowville [†]	EB3033	Nov. 9–Nov. 17
Cache, South	EB3037	Nov. 9–Nov. 17
Diamond Mtn [◇]	EB3196	Nov. 9–Nov. 17
Fillmore, Pahvant	EB3043	Nov. 9–Nov. 17
Fishlake/Thousand Lakes [◇]	EB3065	Nov. 9–Nov. 17
La Sal, Dolores Triangle	EB3044	Dec. 7, 2024– Jan. 31, 2025
La Sal, La Sal Mtns	EB3046	Nov. 9–Nov. 17
Manti [◇]	EB3039	Nov. 9–Nov. 17
Monroe	EB3048	Nov. 9–Nov. 17
Mt Dutton	EB3050	Nov. 9–Nov. 17
Nebo/San Pitch Mtns [◇]	EB3176	Nov. 9–Nov. 17
Panguitch Lake	EB3057	Nov. 9–Nov. 17
San Juan Bull Elk	EB3067	Nov. 9–Nov. 17
Southwest Desert, South	EB3152	Nov. 9–Nov. 17
Wasatch Mtns	EB3073	Nov. 9–Nov. 17

[◇] Hunt unit name has been modified, hunt number is the same as previous years.

[†] This unit is composed of all or largely private property. Hunters should acquire written permission from the landowner before applying for this hunt.

BLACK TEXT: At least one nonresident permit • **BLUE TEXT:** Resident permits only

BULL ELK HUNT TABLES

The Division does not guarantee access to any private or public land. Hunt unit boundaries may include private property or other excluded areas. Hunters must research land accessibility before hunting.

LIMITED-ENTRY BULL ELK

Muzzleloader hunts

Hunt name	Hunt #	Season dates
Beaver, East	EB3077	Sept. 23–Oct. 4
Book Cliffs, Bitter Creek/East	EB3166	Sept. 23–Oct. 4
Book Cliffs, Little Creek Roadless	EB3079	Sept. 23–Oct. 4
Boulder [◊]	EB3154	Sept. 23–Oct. 4
Box Elder, Grouse Creek	EB3153	Sept. 23–Oct. 4
Cache, Meadowville [†]	EB3081	Sept. 23–Oct. 4
Cache, South	EB3083	Sept. 23–Oct. 4
Diamond Mtn [◊]	EB3098	Sept. 23–Oct. 4
Fillmore, Pahvant	EB3086	Sept. 23–Oct. 4
Fishlake/Thousand Lakes [◊]	EB3096	Sept. 23–Oct. 4
La Sal, La Sal Mtns	EB3087	Sept. 23–Oct. 4
Manti [◊]	EB3084	Sept. 23–Oct. 4
Monroe	EB3088	Sept. 23–Oct. 4
Mt Dutton	EB3089	Sept. 23–Oct. 4
Nebo/San Pitch Mtns [◊]	EB3179	Sept. 23–Oct. 4
North Slope, Three Corners	EB3091	Oct. 30–Nov. 7
Panguitch Lake	EB3093	Sept. 23–Oct. 4
San Juan Bull Elk	EB3097	Sept. 23–Oct. 4
Southwest Desert, South	EB3155	Sept. 23–Oct. 4
Wasatch Mtns	EB3100	Sept. 23–Oct. 4

[◊] Hunt unit name has been modified, hunt number is the same as previous years.

[†] This unit is composed of all or largely private property. Hunters should acquire written permission from the landowner before applying for this hunt.

BLACK TEXT: At least one nonresident permit • BLUE TEXT: Resident permits only

The Division does not guarantee access to any private or public land. Hunt unit boundaries may include private property or other excluded areas. Hunters must research land accessibility before hunting.

LIMITED-ENTRY BULL ELK

Multi-season hunts

Permit fee: Resident \$564, Nonresident \$1,855

Note: These hunts exclude limited-entry late-season archery elk hunts (Nov. 30–Dec. 15, 2024).

Hunt name	Hunt #	Season dates
Beaver, East	EB3102	Limited Entry Seasons
Book Cliffs, Bitter Creek/East	EB3165	Limited Entry Seasons
Book Cliffs, Little Creek Roadless	EB3104	Limited Entry Seasons
Boulder [◇]	EB3156	Limited Entry Seasons
Cache, Meadowville [†]	EB3105	Limited Entry Seasons
Cache, South	EB3107	Limited Entry Seasons
Diamond Mtn [◇]	EB3122	Limited Entry Seasons
Fillmore, Pahvant	EB3110	Limited Entry Seasons
Fishlake/Thousand Lakes [◇]	EB3120	Limited Entry Seasons
La Sal, La Sal Mtns	EB3111	Limited Entry Seasons
Manti [◇]	EB3108	Limited Entry Seasons
Monroe	EB3112	Limited Entry Seasons
Mt Dutton	EB3113	Limited Entry Seasons
Nebo/San Pitch Mtns [◇]	EB3178	Limited Entry Seasons
North Slope, Three Corners	EB3115	Limited Entry Seasons
Panguitch Lake	EB3117	Limited Entry Seasons
San Juan Bull Elk	EB3121	Limited Entry Seasons
Southwest Desert, South	EB3157	Limited Entry Seasons
Wasatch Mtns	EB3124	Limited Entry Seasons

[◇] Hunt unit name has been modified, hunt number is the same as previous years.

[†] This unit is composed of all or largely private property. Hunters should acquire written permission from the landowner before applying for this hunt.

BLACK TEXT: At least one nonresident permit • BLUE TEXT: Resident permits only

BULL ELK - PRONGHORN HUNT TABLES

The Division does not guarantee access to any private or public land. Hunt unit boundaries may include private property or other excluded areas. Hunters must research land accessibility before hunting.

LIMITED-ENTRY BULL ELK

Handgun-archery-muzzleloader-shotgun-straight walled rifle-only (HAMSS) limited-entry bull elk hunts

Hunt name	Hunt #	Season dates
Barney Top/Kaiparowits [◇]	EB3142	Nov. 9–Nov. 30
Cache, North	EB3139	Nov. 9–Nov. 30
Southwest Desert, North	EB3143	Nov. 9–Nov. 30
West Desert, Deep Creek	EB3144	Nov. 9–Nov. 30

LIMITED-ENTRY PRONGHORN

Permit fee: Resident \$63, Nonresident \$371

Use the hunt number to apply. Pronghorn bonus point code: **PRO**

Archery hunts

Hunt name	Hunt #	Season dates
Beaver	PB5000	Aug. 17–Sept. 13
Book Cliffs, Bitter Creek	PB5001	Aug. 17–Sept. 13
Book Cliffs, South	PB5002	Aug. 17–Sept. 13
Box Elder, Promontory[†]	PB5003	Aug. 17–Sept. 13
Box Elder, Puddle Valley	PB5004	Aug. 17–Sept. 13
Box Elder, Snowville	PB5005	Aug. 17–Sept. 13
Box Elder, West	PB5006	Aug. 17–Sept. 13
Cache, Rich	PB5074	Aug. 17–Sept. 13
Diamond Mtn/Bonanza [◇]	PB5016	Aug. 17–Sept. 13
Fillmore, Oak Creek South	PB5008	Aug. 17–Sept. 13
La Sal, Potash/South Cisco	PB5009	Aug. 17–Sept. 13
Mt Dutton/Paunsaugunt	PB5332	Aug. 17–Sept. 13
Nine Mile, Anthro-Myton Bench	PB5011	Aug. 17–Sept. 13
Nine Mile, Range Creek	PB5053	Aug. 17–Sept. 13

[◇] Hunt unit name has been modified, hunt number is the same as previous years.

[†] This unit is composed of all or largely private property. Hunters should acquire written permission from the landowner before applying for this hunt.

BLACK TEXT: At least one nonresident permit • **BLUE TEXT:** Resident permits only

PRONGHORN HUNT TABLES

The Division does not guarantee access to any private or public land. Hunt unit boundaries may include private property or other excluded areas. Hunters must research land accessibility before hunting.

LIMITED-ENTRY PRONGHORN

Archery hunts (continued)

Hunt name	Hunt #	Season dates
North Slope, Three Corners/West Daggett	PB5012	Aug. 17–Sept. 13
Panguitch Lake/Zion, North	PB5054	Aug. 17–Sept. 13
Parker Mtn [◊]	PB5077	Aug. 17–Sept. 13
Pine Valley	PB5013	Aug. 17–Sept. 13
San Rafael, Desert	PB5055	Aug. 17–Sept. 13
San Rafael, North	PB5015	Aug. 17–Sept. 13
Southwest Desert	PB5018	Aug. 17–Sept. 13
Vernal [◊]	PB5017	Aug. 17–Sept. 13
West Desert, Riverbed	PB5019	Aug. 17–Sept. 13
West Desert, Rush Valley	PB5020	Aug. 17–Sept. 13
West Desert, Snake Valley	PB5021	Aug. 17–Sept. 13

Muzzleloader hunts

Hunt name	Hunt #	Season dates
Cache, Rich	PB5075	Sept. 25–Oct. 3
Diamond Mtn/Bonanza [◊]	PB5060	Sept. 25–Oct. 3
Fillmore, Oak Creek South	PB5065	Sept. 25–Oct. 3
Nine Mile, Anthro-Myton Bench	PB5059	Sept. 25–Oct. 3
North Slope, Three Corners/West Daggett	PB5066	Sept. 25–Oct. 3
Panguitch Lake/Zion, North	PB5061	Sept. 25–Oct. 3
Parker Mtn [◊]	PB5078	Sept. 25–Oct. 3
Pine Valley	PB5062	Sept. 25–Oct. 3
San Rafael, North	PB5056	Sept. 25–Oct. 3
Southwest Desert	PB5024	Sept. 25–Oct. 3
Vernal [◊]	PB5072	Sept. 25–Oct. 3

[◊] Hunt unit name has been modified, hunt number is the same as previous years.

BLACK TEXT: At least one nonresident permit • BLUE TEXT: Resident permits only

PRONGHORN HUNT TABLES

The Division does not guarantee access to any private or public land. Hunt unit boundaries may include private property or other excluded areas. Hunters must research land accessibility before hunting.

LIMITED-ENTRY PRONGHORN

Any legal weapon (rifle) hunts

Hunt name	Hunt #	Season dates
Beaver	PB5025	Sept. 14–Sept. 22
Book Cliffs, Bitter Creek	PB5026	Sept. 14–Sept. 22
Book Cliffs, South	PB5027	Sept. 14–Sept. 22
Box Elder, Promontory †	PB5028	Sept. 14–Sept. 22
Box Elder, Puddle Valley	PB5029	Sept. 14–Sept. 22
Box Elder, Snowville	PB5030	Sept. 14–Sept. 22
Box Elder, West	PB5031	Sept. 14–Sept. 22
Cache, Rich	PB5073	Sept. 14–Sept. 22
Diamond Mtn/Bonanza ◊	PB5047	Sept. 14–Sept. 22
Fillmore, Oak Creek South	PB5033	Sept. 14–Sept. 22
Kaiparowits	PB5034	Sept. 14–Sept. 22
La Sal, Potash/South Cisco	PB5035	Sept. 14–Sept. 22
Mt Dutton/Paunsaugunt	PB5331	Sept. 14–Sept. 22
Nine Mile, Anthro-Myton Bench	PB5037	Sept. 14–Sept. 22
Nine Mile, Range Creek	PB5038	Sept. 14–Sept. 22
North Slope, Summit	PB5039	Sept. 14–Sept. 22
North Slope, Three Corners/West Daggett	PB5040	Sept. 14–Sept. 22
Panguitch Lake/Zion, North	PB5041	Sept. 14–Sept. 22
Parker Mtn ◊	PB5076	Sept. 14–Sept. 22
Pine Valley	PB5042	Sept. 14–Sept. 22
San Juan, Hatch Point	PB5044	Sept. 14–Sept. 22
San Rafael, Desert	PB5045	Sept. 14–Sept. 22
San Rafael, North	PB5046	Sept. 14–Sept. 22
Southwest Desert	PB5049	Sept. 14–Sept. 22

◊ Hunt unit name has been modified, hunt number is the same as previous years.

† This unit is composed of all or largely private property. Hunters should acquire written permission from the landowner before applying for this hunt.

BLACK TEXT: At least one nonresident permit • BLUE TEXT: Resident permits only

PRONGHORN - BULL MOOSE HUNT TABLES

The Division does not guarantee access to any private or public land. Hunt unit boundaries may include private property or other excluded areas. Hunters must research land accessibility before hunting.

LIMITED-ENTRY PRONGHORN

Any legal weapon (rifle) hunts (continued)

Hunt name	Hunt #	Season dates
Vernal [◊]	PB5048	Sept. 14–Sept. 22
West Desert, Riverbed	PB5050	Sept. 14–Sept. 22
West Desert, Rush Valley	PB5051	Sept. 14–Sept. 22
West Desert, Snake Valley	PB5052	Sept. 14–Sept. 22

ONCE-IN-A-LIFETIME BULL MOOSE HUNTS

Permit fee: Resident \$454, Nonresident \$2,244

Use the hunt number to apply. Moose bonus point code: **M00**

Hunt name	Hunt #	Season dates
Cache	MB6000	Sept. 14–Oct. 17
Chalk Creek [†]	MB6001	Sept. 14–Oct. 17
Diamond Mtn/Vernal [◊]	MB6009	Sept. 14–Oct. 17
East Canyon [†]	MB6002	Sept. 14–Oct. 17
East Canyon, Morgan-Summit [†]	MB6003	Sept. 14–Oct. 17
Kamas	MB6004	Sept. 14–Oct. 17
Morgan-South Rich [†]	MB6005	Sept. 14–Oct. 17
North Slope, Summit	MB6006	Sept. 14–Oct. 17
North Slope, Three Corners/West Daggett	MB6007	Sept. 14–Oct. 17
Ogden [†]	MB6008	Sept. 14–Oct. 17
Wasatch Mtns/Central Mtns	MB6011	Sept. 14–Oct. 17
Yellowstone [◊]	MB6010	Sept. 14–Oct. 17

[◊] Hunt unit name has been modified, hunt number is the same as previous years.

[†] This unit is composed of all or largely private property. Hunters should acquire written permission from the landowner before applying for this hunt.

BLACK TEXT: At least one nonresident permit • BLUE TEXT: Resident permits only

BISON HUNT TABLES

The Division does not guarantee access to any private or public land. Hunt unit boundaries may include private property or other excluded areas. Hunters must research land accessibility before hunting.

ONCE-IN-A-LIFETIME BISON HUNTS

Permit fee: (except Antelope Island) Resident \$460, Nonresident \$2,420

Antelope Island permit fee: Resident \$1,221

Use the hunt number to apply. Bison bonus point code: **BIS**

Hunt name	Hunt #	Season dates
Antelope Island	BI6500	Dec. 2–Dec. 4
Book Cliffs, Bitter Creek (cow only)	BI6536	Nov. 16–Dec. 1
Book Cliffs, Bitter Creek (hunter's choice)	BI6534	Sept. 14–Sept. 22
Book Cliffs, Bitter Creek (hunter's choice)	BI6535	Oct. 5–Oct. 17
Book Cliffs, Bitter Creek (hunter's choice, archery)	BI6532	Aug. 17–Sept. 13
Book Cliffs, Little Creek/South (cow only)	BI6529	Oct. 19–Oct. 29
Book Cliffs, Little Creek/South (hunter's choice)	BI6537	Oct. 30, 2024– Jan. 31, 2025
Book Cliffs, Little Creek/South (hunter's choice)	BI6530	Sept. 14–Sept. 22
Book Cliffs, Little Creek/South (hunter's choice)	BI6531	Oct. 5–Oct. 17
Book Cliffs, Little Creek/South (hunter's choice, archery)	BI6528	Aug. 17–Sept. 13
Henry Mtns (cow only)	BI6505	Dec. 14–Dec. 25
Henry Mtns (cow only)	BI6506	Dec. 28, 2024– Jan. 14, 2025
Henry Mtns (hunter's choice)	BI6503	Nov. 2–Nov. 13
Henry Mtns (hunter's choice)	BI6504	Nov. 16–Nov. 27
Henry Mtns (hunter's choice)	BI6516	Nov. 30–Dec. 11
Henry Mtns (hunter's choice, archery)	BI6509	Jan. 15–Jan. 31, 2025

BLACK TEXT: At least one nonresident permit • **BLUE TEXT:** Resident permits only

BIGHORN SHEEP HUNT TABLES

The Division does not guarantee access to any private or public land. Hunt unit boundaries may include private property or other excluded areas. Hunters must research land accessibility before hunting.

ONCE-IN-A-LIFETIME DESERT BIGHORN SHEEP HUNTS

Permit fee: Resident \$564, Nonresident \$2,244

Use the hunt number to apply. Desert bighorn sheep bonus point code: **DBS**

Hunt name	Hunt #	Season dates
Henry Mtns	DS6600	Sept. 14–Nov. 10
Kaiparowits, East	DS6601	Sept. 14–Nov. 10
Kaiparowits, Escalante	DS6602	Sept. 14–Nov. 10
Kaiparowits, West	DS6603	Sept. 14–Nov. 10
La Sal, Potash/South Cisco	DS6604	Sept. 14–Nov. 10
Mineral Mtns (new)	DS6625	Sept. 14–Nov. 10
Pine Valley, Beaver Dam	DS6621	Oct. 26–Dec. 22
Pine Valley, Virgin River	DS6620	Oct. 26–Dec. 22
San Juan, Lockhart	DS6606	Sept. 14–Nov. 10
San Juan, North	DS6622	Sept. 14–Nov. 10
San Juan, San Juan River	DS6623	Sept. 14–Nov. 10
San Juan, South	DS6607	Sept. 14–Nov. 10
San Rafael, Dirty Devil*	DS6608	Sept. 14–Nov. 10
San Rafael, Dirty Devil (archery)	DS6624	Nov. 28–Dec. 18
San Rafael, North	DS6609	Sept. 14–Nov. 10
San Rafael, South†	DS6610	Sept. 14–Nov. 10
Zion	DS6611	Sept. 14–Nov. 10

* Nonresidents may hunt both the San Rafael, Dirty Devil and the Henry Mtns units—Apply for #DS6608

† Nonresidents may hunt both the San Rafael, North and San Rafael, South subunits—Apply for #DS6610

BLACK TEXT: At least one nonresident permit • BLUE TEXT: Resident permits only

BIGHORN SHEEP HUNT TABLES

The Division does not guarantee access to any private or public land. Hunt unit boundaries may include private property or other excluded areas. Hunters must research land accessibility before hunting.

ONCE-IN-A-LIFETIME ROCKY MOUNTAIN BIGHORN SHEEP HUNTS

Permit fee: Resident \$564, Nonresident \$2,244

Use the hunt number to apply. Rocky Mountain bighorn sheep bonus point code: **RMB**

Hunt name	Hunt #	Season dates
Book Cliffs, South	RS6701	Nov. 1–Nov. 30
Box Elder, Newfoundland Mtn	RS6703	Oct. 5–Oct. 25
Box Elder, Newfoundland Mtn	RS6704	Oct. 26–Nov. 15
Box Elder, Newfoundland Mtn (archery)	RS6722	Nov. 16–Dec. 8
Fillmore, Oak Creek	RS6720	Oct. 5–Oct. 25
Fillmore, Oak Creek	RS6726	Oct. 26–Nov. 15
Fillmore, Oak Creek (archery)	RS6727	Nov. 16–Dec. 8
Nebo [◇]	RS6725	Nov. 1–Nov. 30
Nine Mile, Gray Canyon	RS6712	Nov. 1–Nov. 30
Nine Mile, Jack Creek	RS6713	Nov. 1–Nov. 30
North Slope, Summit/West Daggett	RS6709	Sept. 16–Nov. 30
North Slope, Three Corners	RS6708	Sept. 16–Nov. 30
Oquirrh-Stansbury, West	RS6721	Nov. 1–Nov. 30
Wasatch Mtns, West	RS6724	Nov. 1–Nov. 30

[◇] Hunt unit name has been modified, hunt number is the same as previous years.

BLACK TEXT: At least one nonresident permit • BLUE TEXT: Resident permits only

MOUNTAIN GOAT HUNT TABLES

The Division does not guarantee access to any private or public land. Hunt unit boundaries may include private property or other excluded areas. Hunters must research land accessibility before hunting.

ONCE-IN-A-LIFETIME MOUNTAIN GOAT HUNTS

Permit fee: Resident \$454, Nonresident \$2,244

Use the hunt number to apply. Mountain goat bonus point code: **GOA**

Hunt name	Hunt #	Season dates
Beaver	G06800	Sept. 7–Sept. 29
Beaver	G06801	Sept. 30–Oct. 28
Beaver (archery)	G06822	Oct. 29–Nov. 11
High Uintas Central [◇]	G06805	Sept. 7–Oct. 31
High Uintas East [◇]	G06806	Sept. 7–Oct. 31
High Uintas Kamas [◇]	G06804	Sept. 7–Oct. 31
High Uintas Leidy Peak [◇]	G06807	Sept. 7–Oct. 31
High Uintas West [◇]	G06808	Sept. 7–Oct. 31
La Sal, La Sal Mtns	G06817	Sept. 7–Nov. 27
Mt Dutton	G06814	Sept. 7–Nov. 27
Nebo [◇]	G06803	Sept. 28–Nov. 27
Nebo [◇] (archery)	G06821	Sept. 18–Sept. 27
Ogden, Willard Peak	G06810	Sept. 7–Nov. 27
Wasatch Mtns, Box Elder Peak	G06818	Sept. 7–Nov. 27
Wasatch Mtns, Lone Peak	G06819	Sept. 7–Nov. 27
Wasatch Mtns, Provo Peak	G06813	Sept. 7–Nov. 27
Wasatch Mtns, Timpanogos	G06820	Sept. 7–Nov. 27

[◇] Hunt unit name has been modified, hunt number is the same as previous years.

BLACK TEXT: At least one nonresident permit • BLUE TEXT: Resident permits only

BUCK DEER CWMU HUNT TABLES

For more details about individual properties, including public-hunt dates and contact information, please visit wildlife.utah.gov/cwmu.

Cooperative Wildlife Management Units

Utah Admin. Rule R657-37

Utah's Cooperative Wildlife Management Unit (CWMU) program provides landowners with an economic incentive to keep their private range and forest lands as productive wildlife habitat.

The landowners receive vouchers for hunting permits, which they can sell for profit, as long as they also allow a percentage of public hunters on their lands.

If you're a Utah resident, there are two ways to obtain a CWMU permit: you can apply for one in the state's big game drawing, or you can obtain a permit voucher from the landowner or operator of the CWMU you want to hunt.

If you're not a resident of Utah, you cannot apply for a CWMU permit in the public drawing. You can, however, obtain a permit voucher directly from the CWMU landowner or operator.

Keep in mind that whether you draw or purchase a permit, you may not obtain more

than one of each of the following permits during the 2024 big game season:

- Buck deer permit
- Bull elk permit
- Buck pronghorn permit

For example, if you draw a general-season buck deer permit—and then decide you want to hunt on a CWMU instead—you must surrender your general-season permit before the opening day of the season listed on your permit and before redeeming the private CWMU voucher for a permit.

Reminder: If you choose to surrender any big game permit you've drawn (to purchase/obtain a private CWMU voucher, for example), be sure to do so **at least 30 days before your hunt begins** or you could lose previously accrued preference or bonus points. For details, see page 30.

For more information on Utah's CWMU program, including details about individual properties, please visit wildlife.utah.gov/cwmu.

CWMU PREMIUM BUCK DEER HUNTS

Permit fee: Resident \$185, Use the hunt number to apply.

Nonresidents may only obtain a CWMU permit directly through the operator.

Hunt name	Hunt #	County	Public permits
Alton	DB1200	Kane	3

CWMU MANAGEMENT AND CACTUS BUCK DEER HUNTS

Permit fee: Resident \$94, use the hunt number to apply.

Nonresidents may only obtain a CWMU permit directly through the operator.

Hunt name	Hunt #	County	Public permits
Alton (management buck)	DB1201	Kane	1
Alton (cactus buck)	DB1334	Kane	1

BUCK DEER CWMU
HUNT TABLES

For more details about individual properties, including public-hunt dates and contact information, please visit wildlife.utah.gov/cwmu.

CWMU BUCK DEER HUNTS

Permit fee: Resident \$94, use the hunt number to apply.
 Nonresidents may only obtain a CWMU permit directly through the operator.
 For more information on the CWMU Program, see page 68.

Hunt name	Hunt #	County	Public permits
5S	DB1333	Morgan	2
Antelope Creek	DB1202	Duchesne	1
Avintaquin Canyon	DB1203	Duchesne	1
Bally Watts	DB1204	Morgan	1
Bar J Ranch	DB1205	Sevier	1
Bear Mountain	DB1206	Sanpete	1
Bear Springs	DB1207	Weber	1
Big Piney Ranch	DB1335	Summit	1
Blackhawk	DB1208	Carbon	1
Blind Springs	DB1209	Box Elder	1
Blue Spring Hills	DB1211	Box Elder	1
Bluebell	DB1212	Cache	1
Boobe Hole	DB1213	Sevier	2
Buckhorn Ranch	DB1215	Duchesne/Wasatch	1
Causey Spring	DB1217	Weber	1
Chimney Rock	DB1219	Morgan/Summit	2
Clear Creek	DB1328	Box Elder	1
Coldwater Ranch	DB1222	Cache	2
Cotton Thomas	DB1224	Box Elder	1
Deer Creek	DB1320	Wasatch	1
Deer Haven	DB1227	San Juan	2
Deseret	DB1228	Morgan/Rich/Weber	14
Diamond Mountain (new)	DB1345	Uintah	1
Dilly Ranch	DB1229	Box Elder	1
Double Cone	DB1325	Box Elder	1
Double R Ranch	DB1230	Wasatch	2
Dove Creek	DB1231	Box Elder	2
Dry Creek	DB1341	Summit	1

BUCK DEER CWMU HUNT TABLES

For more details about individual properties, including public-hunt dates and contact information, please visit wildlife.utah.gov/cwmu.

CWMU BUCK DEER HUNTS (continued)

Hunt name	Hunt #	County	Public permits
Durst Mountain	DB1232	Morgan	2
East Fork Chalk Creek	DB1233	Summit	4
East Zion	DB1234	Kane	1
Engineer Springs	DB1236	Box Elder	1
Ensign Ranches	DB1237	Morgan/Rich/Summit	3
Faust Valley	DB1342	Box Elder	1
First Light	DB1336	Carbon	1
Folley Ridge	DB1238	Morgan	3
Fort Ranch	DB1239	Box Elder	1
George Creek	DB1240	Box Elder	1
Golden Spike	DB1241	Box Elder	1
Grass Valley/Clark Canyon	DB1242	Summit	14
Grazing Pasture	DB1243	Sevier	1
Green Canyon	DB1244	Cache	2
Guildersleeve	DB1245	Morgan	1
Hardscrabble	DB1246	Davis/Morgan/Salt Lake	2
Heaston East	DB1248	Salt Lake	2
Hiawatha	DB1249	Carbon	1
Indian Creek	DB1250	Box Elder	1
Indian Head	DB1251	Carbon/Duchesne/Utah	2
Ingham Peak	DB1252	Box Elder	3
Iron Spring	DB1330	Iron	1
J.B. Ranch	DB1253	Grand/San Juan	2
Jacob's Creek	DB1317	Davis/Morgan	1
Johnson Mountain Ranch	DB1255	Sevier	1
Junction Valley	DB1256	Box Elder	5
Kimberly (new)	DB1348	Piute	1
Little Pole Canyon	DB1337	Wasatch	1
Middle Ridge	DB1260	Rich	2

BUCK DEER CWMU
HUNT TABLES

For more details about individual properties, including public-hunt dates and contact information, please visit wildlife.utah.gov/cwmu.

CWMU BUCK DEER HUNTS (continued)

Hunt name	Hunt #	County	Public permits
Minnie Maud Ridge	DB1261	Carbon/Duchesne	5
Moon Ranch	DB1263	Duchesne	1
Mountain Meadow	DB1264	Box Elder	1
Mountain Sky Ranch	DB1327	Utah	1
Mountain Top	DB1265	Morgan/Summit	2
Mt Carmel	DB1266	Kane	3
North Peaks	DB1303	Box Elder	1
North Promontory	DB1269	Box Elder	1
Nucor West	DB1270	Box Elder	1
Oak Ranch	DB1271	Sevier	3
Old Woman Plateau	DB1272	Sevier	3
Pahvant Ensign	DB1322	Millard/Sevier	1
Park Valley Hereford	DB1273	Box Elder	5
Patmos Ridge	DB1274	Carbon	1
Pine Canyon	DB1275	Morgan	2
Pisgah Mountain	DB1286	Box Elder/Cache	2
Plymouth Peak	DB1276	Box Elder	1
Pocatello Valley	DB1277	Box Elder	1
Preston Nutter Ranch	DB1279	Carbon	1
Promontory Point	DB1280	Box Elder	1
Raft River	DB1331	Box Elder	3
Rattlesnake Pass	DB1281	Box Elder	3
Red Iron	DB1343	Juab	1
Redd Ranches	DB1282	Grand/San Juan	2
Roan Cliffs	DB1283	Carbon	1
Rock House	DB1323	Juab	1
Rosette	DB1326	Box Elder	1
Royal Ivory Outfitters	DB1324	Summit	1
Salt Wells	DB1344	Box Elder	1
Sand Creek	DB1285	Duchesne	1

BUCK DEER CWMU HUNT TABLES

For more details about individual properties, including public-hunt dates and contact information, please visit wildlife.utah.gov/cwmu.

CWMU BUCK DEER HUNTS (continued)

Hunt name	Hunt #	County	Public permits
Scofield Canyons	DB1287	Carbon/Utah	1
Scofield West	DB1288	Carbon/Utah	2
Sharp Mountain	DB1289	Cache/Weber	2
Skull Crack	DB1290	Morgan/Weber	1
Skull Valley South	DB1291	Tooele	1
Soldier Summit	DB1292	Carbon/Utah/Wasatch	2
South Canyon	DB1293	Box Elder/Cache	2
Spring Creek Acres	DB1294	Cache	1
Spring Creek/Dodge	DB1295	San Juan	6
Strawberry Ridge	DB1298	Cache/Rich	1
Summit Point	DB1299	San Juan	3
Sweetwater	DB1338	Garfield	1
Thatcher Mountain	DB1300	Box Elder	1
The Rose of Snowville (new)	DB1347	Box Elder	2
Three C	DB1301	Wasatch	2
Tunnel Hollow	DB1259	Morgan/Summit	1
Two Bear	DB1304	Summit	1
Wallsburg	DB1305	Wasatch	1
Washakie	DB1306	Box Elder	1
Weber Florence Creek/Stillman Creek (new)	DB1349	Summit	9
West Hills	DB1308	Box Elder	3
West Ridge	DB1332	Carbon	5
West Willow Creek Ranch	DB1309	Uintah	4
White's Valley	DB1310	Box Elder	1
Woodruff Creek South	DB1312	Rich	1

For more details about individual properties, including public-hunt dates and contact information, please visit wildlife.utah.gov/cwmu.

CWMU ANY BULL ELK HUNTS

Permit fee: Resident \$314, use the hunt number to apply. Nonresidents may only obtain a CWMU permit directly through the operator. For more information on the CWMU Program, see page 68.

Hunt name	Hunt #	County	Public permits
Alton	EB3500	Kane	1
Avintaquin Canyon	EB3608	Duchesne	1
Bar J Ranch	EB3501	Sevier	2
Bear Mountain	EB3502	Sanpete	1
Bear Springs	EB3503	Morgan/Weber	1
Blackhawk	EB3504	Carbon	1
Boobe Hole	EB3505	Sevier	2
Causey Spring	EB3506	Weber	1
Chimney Rock	EB3508	Morgan/Summit	2
Coldwater Ranch	EB3509	Cache	2
Cotton Thomas	EB3511	Box Elder	1
Deseret	EB3514	Morgan/Rich/Weber	18
Diamond Mountain (new)	EB3617	Uintah	1
Double Cone	EB3515	Box Elder	1
Double R Ranch	EB3604	Wasatch	1
Durst Mountain	EB3516	Morgan	3
East Fork Chalk Creek	EB3517	Summit	3
Ensign Ranches	EB3519	Morgan/Rich/Summit	4
Folley Ridge	EB3520	Morgan	2
Grass Valley/Clark Canyon	EB3521	Summit	10
Grazing Pasture	EB3522	Sevier	1
Guildersleeve	EB3523	Morgan	2
Hardscrabble	EB3524	Davis/Morgan/Salt Lake	2
Heaston East	EB3525	Salt Lake	2
Hiawatha	EB3526	Carbon	2
Indian Head	EB3527	Carbon/Duchesne/Utah	1

BULL ELK CWMU HUNT TABLES

For more details about individual properties, including public-hunt dates and contact information, please visit wildlife.utah.gov/cwmu.

CWMU ANY BULL ELK HUNTS (continued)

Hunt name	Hunt #	County	Public permits
Ingham Peak	EB3528	Box Elder	1
J.B. Ranch	EB3529	Grand/San Juan	2
Jacob's Creek	EB3530	Davis/Morgan	1
Johnson Mountain Ranch	EB3531	Sevier	2
Jump Creek	EB3532	Carbon	1
Junction Valley	EB3533	Box Elder	1
Little Pole Canyon	EB3613	Wasatch	1
Little Red Creek	EB3534	Wasatch	2
Minnie Maud Ridge	EB3536	Carbon/Duchesne	5
Moon Ranch	EB3538	Duchesne	1
Mountain Sky Ranch	EB3606	Utah	1
North Peaks	EB3565	Box Elder	1
Old Woman Plateau	EB3540	Sevier	2
Pahvant Ensign	EB3603	Millard/Sevier	1
Patmos Ridge	EB3541	Carbon	1
Preston Nutter Ranch	EB3543	Carbon	2
Redd Ranches	EB3544	Grand/San Juan	2
Riverview Ranch LLC	EB3545	Box Elder	2
Roan Cliffs	EB3546	Carbon	1
Royal Ivory Outfitters	EB3609	Summit	3
Sand Creek	EB3547	Duchesne	1
Scofield Canyons	EB3548	Carbon/Utah	1

**BULL ELK CWMU
HUNT TABLES**

For more details about individual properties, including public-hunt dates and contact information, please visit wildlife.utah.gov/cwmu.

CWMU ANY BULL ELK HUNTS (continued)

Hunt name	Hunt #	County	Public permits
Scofield East	EB3549	Carbon	1
Scofield West	EB3550	Carbon/Utah	2
Sharp Mountain	EB3610	Cache	2
SJ Ranch	EB3551	Cache	1
Skull Crack	EB3552	Morgan/Weber	1
Soldier Summit	EB3553	Carbon/Utah/Wasatch	2
South Canyon	EB3554	Box Elder/Cache	2
Spring Creek/Dodge	EB3555	San Juan	2
Strawberry Ridge	EB3557	Cache/Rich	2
Summit Point	EB3558	San Juan	1
Sweetwater	EB3616	Garfield	1
Three C	EB3559	Wasatch	2
Tunnel Hollow	EB3614	Morgan/Summit	1
Two Bear	EB3561	Summit	5
Wallsburg	EB3562	Wasatch	1
Weber Florence Creek/Stillman Creek (new)	EB3619	Summit	10
West Ridge	EB3611	Carbon	2
West Willow Creek Ranch	EB3607	Uintah	1
Woodruff Creek South	EB3564	Rich	2

PRONGHORN CWMU HUNT TABLES

For more details about individual properties, including public-hunt dates and contact information, please visit wildlife.utah.gov/cwmu.

CWMU BUCK PRONGHORN HUNTS

Permit fee: Resident \$63, use the hunt number to apply. Nonresidents may only obtain a CWMU permit directly through the operator. For more information on the CWMU Program, see page 68.

Hunt name	Hunt #	County	Public permits
Allen Ranch	PB5325	Utah	1
Antelope Creek	PB5300	Duchesne	4
Cedar Springs	PB5326	Box Elder	1
Cottonwood Ridge	PB5327	Duchesne	4
Deseret	PB5302	Morgan/Rich/Weber	16
George Creek	PB5330	Box Elder	1
Green River Flat (new)	PB5345	Grand	2
Heist	PB5337	Beaver/Iron	2
Iron Spring	PB5339	Iron	1
Pahvant Ensign	PB5328	Millard/Sevier	3
Park Valley	PB5305	Box Elder	2
Prohibition Springs (new)	PB5343	Box Elder	1
Rabbit Creek	PB5306	Rich	1
Salt Wells	PB5342	Box Elder	2
Skull Valley South	PB5309	Tooele	2
Snowville Flat	PB5329	Box Elder	1
Sweetwater	PB5341	Garfield	1
The Rose of Snowville	PB5311	Box Elder	4
TL Bar Ranch	PB5312	Box Elder/Toole	1
West Willow Creek Ranch	PB5313	Uintah	1
Westlake	PB5314	Utah	3
Zane	PB5315	Iron	2

BULL MOOSE CWMU HUNT TABLES

For more details about individual properties, including public-hunt dates and contact information, please visit wildlife.utah.gov/cwmu.

CWMU BULL MOOSE HUNTS

Permit fee: Resident \$454, Use the hunt number to apply. Nonresidents may only obtain a CWMU permit directly through the operator. For more information on the CWMU Program, see page 68.

Hunt name	Hunt #	County	Public permits
Bear Springs	MB6200	Weber	1
Causey Spring	MB6202	Weber	1
Chimney Rock	MB6240	Morgan	1
Deseret	MB6206	Morgan/Rich/Weber	2
Durst Mountain	MB6207	Morgan	1
East Fork Chalk Creek	MB6208	Summit	2
Ensign Ranches	MB6209	Summit	1
Grass Valley/Clark Canyon	MB6211	Summit	3
Hardscrabble	MB6251	Davis/Morgan/Salt Lake	1
Jacob's Creek	MB6258	Morgan	1
Little Pole Canyon	MB6265	Wasatch	1
Moon Ranch	MB6263	Duchesne	1
Royal Ivory Outfitters	MB6259	Summit	1
Sand Creek	MB6264	Duchesne	1
Sharp Mountain	MB6217	Cache	1
SJ Ranch	MB6254	Cache	1
Skull Crack	MB6219	Morgan/Weber	2
South Canyon	MB6220	Cache	1
Strawberry Ridge	MB6222	Cache/Rich	1
Three C	MB6223	Wasatch	1
Two Bear	MB6224	Summit	1
Weber Florence Creek/Stillman Creek (new)	MB6266	Summit	4
Woodruff Creek South	MB6256	Rich	1

DEFINITIONS

Utah Code § 23A-1-101 and Utah Admin. Rules R657-5-2, R657-5-47, R657-37 and R657-67

The following definitions explain terms used in this guidebook. The *2024 Utah Big Game Field Regulations Guidebook* (available in June 2024) will contain additional definitions that focus on hunting, harvesting and possessing big game.

Antlerless deer means a deer without antlers or with antlers five inches or shorter.

Antlerless elk means an elk without antlers or with antlers five inches or shorter.

Antlerless moose means a moose with antlers shorter than its ears.

Any legal weapon means any weapon listed at wildlife.utah.gov/R657-5 (see R657-5-8 through R657-5-12) or in the Firearms and Archery Equipment section of the *2024 Utah Big Game Field Regulations Guidebook* (available in June 2024).

Big game means species of hoofed protected wildlife.

Buck deer means a deer with antlers longer than five inches.

Buck pronghorn means a pronghorn with horns longer than five inches.

Bull elk means an elk with antlers longer than five inches.

Bull moose means a moose with antlers longer than its ears.

Cactus buck means a buck deer with velvet covering at least 50 percent of the antlers during the season dates established by the Wildlife Board for a cactus buck deer hunt.

Certificate of registration means a document issued under any rule or proclamation of the Wildlife Board granting authority to engage in activities not covered by a license, permit or tag.

CWMU means Cooperative Wildlife Management Unit.

Domicile means the place where an individual has a fixed permanent home and principal establishment. It is also the place to which the individual, if absent, intends to return; and in which the individual, and the individual's family voluntarily reside, not for a special or temporary purpose, but with the intention of making a permanent home. To create a new domicile, an individual shall abandon the old domicile and be able to prove that a new domicile has been established.

Draw lock means a mechanical device used to hold and support the draw weight of a conventional or compound bow at any increment of draw, until released by the archer using a trigger mechanism and safety attached to the device.

Drone means an autonomously controlled, aerial vehicle of any size or configuration that is capable of controlled flight without a human pilot aboard.

Handgun-archery-muzzleloader-shotgun-straight walled rifle-only hunt (HAMSS hunt) means a limited-entry hunt with very specialized weapon requirements. Before you apply for one of these hunts, see R657-5-47 to confirm whether the weapon you plan to use is legal for the hunt.

Hunter's choice means either sex may be taken.

Hunting means to take or pursue a reptile, amphibian, bird or mammal by any means.

Hunting mentor means a resident or non-resident individual possessing a valid permit issued by the Division to take protected wildlife in Utah and who is 21 years of age or older at the time of application for the Mentor Program.

Limited-entry hunt means any hunt that is identified as limited-entry and listed in the hunt table of this guidebook, and that does not include general or once-in-a-lifetime hunts.

Limited-entry permit means any permit obtained for a limited-entry hunt by any means, including multi-season premium limited-entry permits, premium limited-entry permits, multi-season limited-entry permits, limited-entry permits, cactus buck permits, management buck permits, handgun-archery-muzzleloader-shotgun-only permits, conservation permits, expo permits, sportsman permits, CWMU permits and limited-entry landowner permits.

Night-vision device means anything that enhances visible and non-visible light and includes the use of night-vision devices, thermal-imaging devices, infrared-imaged devices and other electronic devices that enhance the visible and non-visible light spectrum. Trail cameras are not a night-vision device.

Nonresident means a person who does not qualify as a resident.

Once-in-a-lifetime hunt means any hunt that is identified as once-in-a-lifetime and listed in the hunt table of this guidebook, and that does not include general or limited-entry hunts.

Once-in-a-lifetime permit means any permit obtained for a once-in-a-lifetime hunt by any means, including conservation permits, expo permits, sportsman permits, CWMU permits and limited-entry landowner permits.

Permit means a document, including a stamp, which grants authority to engage in specific activities under the Wildlife Resources Code or a rule or proclamation of the Wildlife Board.

Possession means actual or constructive possession.

Qualifying minor means a Utah resident who is under 18 at the time of application for the Mentor Program and who is otherwise eligible to lawfully hunt.

Ram means a male desert bighorn sheep or Rocky Mountain bighorn sheep older than one year of age.

Resident means a person who has a domicile (fixed permanent home and principal establishment) in Utah for six consecutive months immediately preceding the purchase of a license or permit, **and does not** claim residency for hunting, fishing or trapping in any other state or country.

An individual retains Utah residency if he or she leaves Utah to serve in the armed forces of the United States, or for religious or educational purposes, and **does not** claim residency for hunting, fishing or trapping in any other state or country.

Members of the armed forces of the United States and dependents are residents as of the date the member reports for duty under assigned orders in Utah, if:

- The member is **not** on temporary duty in Utah and does **not** claim residency for hunting, fishing or trapping in any other state or country.
- The member presents a copy of his or her assignment orders to a Division office to verify the member's qualification as a resident.

A nonresident attending an institution of higher learning in Utah as a full-time student may qualify as a resident if the student has been present in Utah for 60 consecutive days immediately preceding the purchase of the license or permit and **does not** claim residency for hunting, fishing or trapping in any other state or country.

A Utah resident license or permit is invalid if a resident license for hunting, fishing or trapping is purchased in any other state or country.

An individual **does not** qualify as a resident if he or she is an absentee landowner paying property tax on land in Utah.

Shed antlers are antlers that a big game animal has dropped naturally as part of its annual lifecycle.

Shed horns are the sheaths from the horns of a pronghorn that the animal has dropped naturally as part of its annual lifecycle. Pronghorn are the only big game animals that shed their horns.

Sell means to offer or possess for sale, barter, exchange or trade, or the act of selling, bartering, exchanging or trading.

Spike bull means a bull elk which has at least one antler beam with no branching above the ears. Branched means a projection on an antler longer than one inch, measured from its base to its tip.

Tag means a card, label or other identification device issued for attachment to the carcass of protected wildlife.

Take means to:

- Hunt, pursue, harass, catch, capture, possess, angle, seine, trap or kill any protected wildlife; or
- Attempt any of the above actions.

Trail camera means a device that is not held or manually operated by a person and is used to capture images, video, or location data of wildlife using heat, or motion to trigger the device.

Wildlife document means a permit to hunt protected wildlife or Division-issued authorization to share such a permit.



LEARN TO HUNT: **FINDING A MENTOR**
WITH
TEAM WILDLIFE



LEARN MORE ABOUT TEAM WILDLIFE AT [WILDLIFE.UTAH.GOV/TEAMWILDLIFE](https://wildlife.utah.gov/teamwildlife)