

RAC AGENDA – September 2013

Revised September 9, 2013



1. Welcome, RAC Introductions and RAC Procedure
- RAC Chair **ACTION**
2. Approval of Agenda and Minutes
- RAC Chair **INFORMATIONAL**
3. Wildlife Board Meeting Update
- RAC Chair **INFORMATIONAL**
4. Regional Update
- DWR Regional Supervisor **INFORMATIONAL**
5. Fishing Guidebook and Rule R657-13
- Drew Cushing, Aquatic Program Coordinator
- Paul Birdsey, Sport Fisheries Program Coordinator **ACTION**

Region Specific Items – to be presented in the specified region only.

- | | | |
|---------|--|----------------------|
| CRO -1 | Establishment of Least Chub Refuge Populations | ACTION |
| CRO -2 | Mill Creek Cutthroat Restoration Project | INFORMATIONAL |
| CRO -3 | Yuba Reservoir Fishery Management Plan | INFORMATIONAL |
| CRO -5 | Scofield Reservoir Study | INFORMATIONAL |
| SERO -1 | Scofield Reservoir Study | INFORMATIONAL |

Meeting Locations

- | | |
|---|---|
| SR RAC – Sept. 10th 7:00 PM
Richfield High School
510 W.100 S., Richfield | CR RAC – Sept. 17th 6:30 PM (Location Change)
DNR - Boardroom
1594 W. North Temple, Salt Lake City |
| SER RAC – Sept. 11th 6:30 PM
John Wesley Powell Museum
1765 E. Main St., Green River | NR RAC – Sept. 18th 6:00 PM (Time Correction)
Brigham City Community Center
24 N. 300 W., Brigham City |
| NERO RAC – Sept. 12th 6:30 PM
Wildlife Resources NER Office
318 North Vernal Ave, Vernal | Board Meeting – Nov.7th 9:00 AM
DNR - Boardroom
1594 W. North Temple
Salt Lake City, UT |

Utah Fishing Regulation Recommendations for 2014

Spearfishing

The following waters are open to spearfishing from January 1 through December 31. Unless otherwise noted, spearfishermen may take any legal species within the limits imposed for the waters: Big Sandwash Reservoir, Blue Lake (tilapia only), Brown's Draw Reservoir, Causey Reservoir, Electric Lake, Grantsville Reservoir, Ken's Lake, Newcastle Reservoir (wipers and rainbow trout only), Porcupine Reservoir, Recapture Reservoir, Red Fleet Reservoir, Sand Lake, Smith – Moorehouse Reservoir, Willard Bay Reservoir, Yuba Reservoir.

The following waters are open to spearfishing from January 1 through December 31. **Closed to the take of black bass (largemouth and smallmouth) from April 1 through the fourth Saturday in June.** All other limits apply: Deer Creek Reservoir, East Canyon Reservoir, Echo Reservoir, Flaming Gorge Reservoir, Lake Powell, Pineview Reservoir (Closed to the take of tiger musky January 1 through December 31), Rockport Reservoir, Starvation Reservoir, Steinaker Reservoir

Close Jordanelle and Lost Creek Reservoirs to underwater spearfishing for sportfish.

Catch-and-Kill Provisions.

(1) The Wildlife Board may designate in guidebook or proclamation waters that anglers are required to kill any fish caught belonging to a specified species.

(2) A person shall immediately kill a fish caught in waters identified by the Wildlife Board as catch-and-kill for that species.

Recommendations for disposal

A person may either consume or dispose of a dead fish subject to a catch-and-kill regulation at the following locations:

- (a) in the water where the fish was caught;
- (b) buried on the shoreline of the water where the fish was caught;
- (c) a fish cleaning station;
- (d) the angler's place of residence; or
- (e) another location where disposal is authorized by law.

Waters and species of fish where disposal will be permitted.

All waters statewide: Common carp

Blue Lake (tilapia), Deer Creek Reservoir (white bass, black bullhead), Flaming Gorge (burbot), Grantsville Reservoir (smallmouth bass), Lake Powell (striped bass), Red Fleet Reservoir (walleye), Utah Lake (northern pike)

Green River, Colorado River, San Juan River and the following tributaries, Green River tributaries: Ashley Creek, Brush Creek, Duchesne River, White River, Willow Creek, Price River, San Rafael River, Range Creek, Nine Mile Creek, Colorado River Tributaries: Dolores River, Mill Creek, Dirty Devil River, San Juan River Tributaries: Comb Wash, Montezuma Creek, Recapture Creek (burbot, northern pike, smallmouth bass and walleye)

New Snagging Language

It is unlawful to intentionally snag or attempt to snag any fish. Fish hooked anywhere than the mouth must be released immediately. "Snag" means to hook a fish elsewhere than in the mouth. The only exception to this rule is at Bear Lake for Bonneville cisco.

Add the following waters to the list where carp are the only nongame fish that can be taken:

Raft River from the Utah/Idaho stateline (including all tributaries)

Weber River

Yellow Creek

Wildlife Board Action Item: Two day possession limit

In addition to one (1) legal daily limit of unprocessed fish, a person may possess one (1) additional limit of processed fish provided the processed fish were caught during a previous day provided they are within the legal limit of fish species and water body where the angler is fishing. The only exceptions to this rule are Strawberry Reservoir and Flaming Gorge where you may only have one daily limit in your possession.

Chumming at Lake Powell, Garfield, Kane and San Juan Counties

Presently chumming is only allowed for taking striped bass at Lake Powell and you can only chum with anchovies.

Recommendation: At Lake Powell, you may chum only with baits listed as legal in the bait rule R657-13-12

Brian Head Pond, (Iron County) (Add to Community Fisheries List)

Limit 2 fish

Fishing from boats and float tubes is PROHIBITED

- **Aspen-Mirror Lake** (Kane County)

- **Duck Creek Springs Lake** (Kane County)
- **Pine Valley Reservoir** (Washington County)

Fishing from a boat with a motor of any kind is PROHIBITED

- **Anderson Meadow Reservoir** (Beaver County)
- **Barney Lake** (Piute County)
- **Boulder Mountain Lakes** (Garfield and Wayne Counties) (EXCEPT, Wide Hollow Reservoir, Pine Lake, and Lower Bowns Reservoir)
- **Little Reservoir** (Beaver County)

Currant Creek (Wasatch County) confluence with Water Hollow to the headwaters

Limit 4 trout

Wasatch Mountain State Park Pond (Wasatch County) (Add to Community Fishery)

Limit two fish

Yuba Reservoir, Juab County)

Limit 20 northern pike, only one northern pike over 36 inches may be in possession

Lost Creek Reservoir (Morgan County)

At Lost Creek Reservoir anglers may not fillet trout and salmon, anglers may not remove their heads or tails while in the field or in transit

Stateline Reservoir, Summit County

CLOSED to the possession of kokanee salmon with any red color Aug. 15 through 6 a.m. on the last Saturday of September.

Willard Bay Reservoir and inlet channel, Box Elder County

Possession and use of commercially sold, preserved gizzard shad is allowed, otherwise possession of gizzard shad, dead or alive is unlawful

Electric Lake, Emery County

-CLOSED to the possession of kokanee salmon with any red color Aug. 15 through 6 a.m. on the last Saturday of September.

Electric Lake Tributaries, Emery County, from Electric Lake upstream to the headwaters

CLOSED to the possession of kokanee salmon with any red color Aug. 15 through 6 a.m. on the last Saturday of September

Green River, Carbon, Daggett, Emery, Grand, San Juan, Uintah and Wayne Counties, From the Flaming Gorge dam down river to the confluence of the Colorado River.

AND

Green River, Carbon, Daggett, Emery, Grand, San Juan, Uintah and Wayne Counties, From the Flaming Gorge dam down river to the confluence of the Colorado River.

AND

Green River tributaries: Ashley Creek, Uintah County, From the confluence with the Green River upstream to the town of Vernal, Brush Creek, Uintah County, From the confluence with the Green River upstream to Red Fleet Dam, Duchesne River, Duchesne and Uintah Counties, From the confluence with the Green River upstream to the Knight Diversion, White River, Uintah County, From the confluence with the Green River to the UT-CO border, Willow Creek, Uintah County, From the confluence with the Green River upstream to the confluence with Hill Creek, Price River, Carbon and Emery Counties, From the confluence with the Green River upstream to the Farnham Dam/Diversion near Wellington Utah, San Rafael River, Emery County, From the confluence with the Green River upstream to the Hatt's Ranch Diversion near State Highway 24, Range Creek, Carbon and Emery Counties, From the confluence with the Green River upstream to headwaters, Nine Mile Creek, Carbon and Duchesne Counties, From the confluence with the Green River upstream to headwaters.

Colorado River: Garfield, Grand, San Juan, Wayne Counties, From the Colorado state line down river to the Hite bridge on State Highway 95

AND

Colorado River Tributaries: Dolores River, Grand County, From the confluence with the Colorado River upstream to the Colorado State line, Mill Creek, Grand County, From the confluence with the Colorado River upstream to headwaters, Dirty Devil River, Garfield and Wayne Counties, From the State Highway 95 bridge upstream to the Hanksville Diversion.

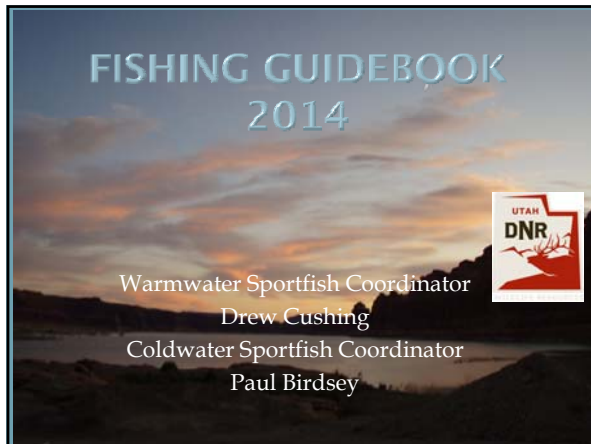
San Juan River, San Juan County, (from Lake Powell to the Colorado/Utah state line.

AND

San Juan Tributaries: Comb Wash, San Juan County, From the confluence with the San Juan River upstream to headwaters, Montezuma Creek, San Juan County, From the confluence with the San Juan River upstream to headwaters, Recapture Creek, San Juan County, From the confluence with the San Juan River upstream to the Recapture Reservoir dam.

No limit for channel catfish

No limit for burbot, northern pike, smallmouth bass or walleye. Anglers may not release any of these fish, which must be immediately killed

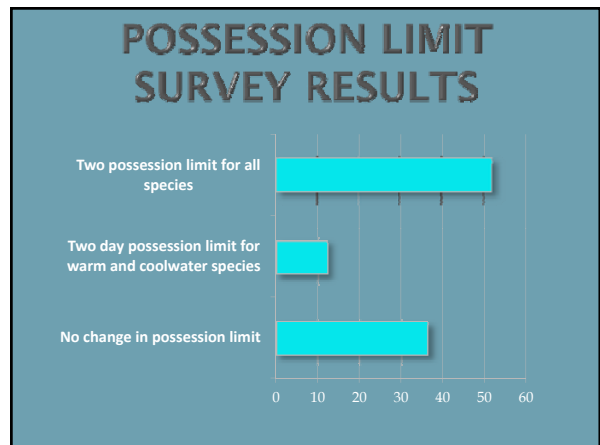


STATEWIDE SURVEY

- ❑ We conducted an online survey of anglers from May 10 – June 10, 2013.
- ❑ We asked 8 questions regarding possible regulation changes and one question on the management direction at Scofield Reservoir.
- ❑ There was also space provided for general comments.
- ❑ A total of 1,158 people participated in the survey.

POSSESSION LIMIT

- ❑ An action item from the 2012 Wildlife Board meeting directed the DWR to investigate the possibility of increasing the possession limit to accommodate anglers that may travel to a water for multiple days.
- ❑ We developed three alternative approaches to this issue through consultation with our Aquatics Managers and members of the public.
- ❑ The alternatives were included on our statewide angler survey for broader public input.



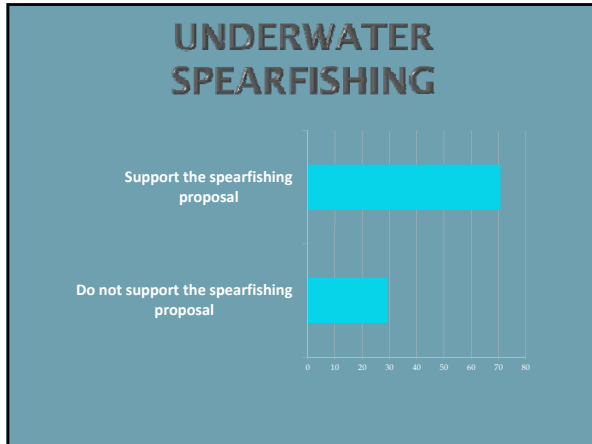
POSSESSION LIMIT

In addition to one (1) legal daily limit of unprocessed fish, a person may possess one (1) additional limit of processed fish provided the processed fish were caught during a previous day provided they are within the legal limit of fish species and water body where the angler is fishing.

The only exceptions to this rule are Strawberry Reservoir and Flaming Gorge where you may only have one daily limit in your possession.

UNDERWATER SPEARFISHING

- ❑ In 2012, the Wildlife Board directed the DWR to review the underwater spearfishing rule with an eye to providing more opportunities to spearfishermen.
- ❑ We met with a group of spearfishermen and anglers during the winter and spring of 2013 to review the rule.
- ❑ The final proposal generated by the group is a compromise of widely different points of view on the issue.
- ❑ We would like to thank the members of the public who participated in the committee to draft the rule.



- ## Underwater Spearfishing Seasons and Waters
- | | |
|--|---|
| <p>January 1-December 31</p> <ul style="list-style-type: none"> ❑ Big Sandwash Reservoir ❑ Blue Lake (tilapia only) ❑ Brown's Draw Reservoir ❑ Causey Reservoir ❑ Electric Lake ❑ Grantsville Reservoir ❑ Ken's Lake ❑ Newcastle Reservoir (wipers and rainbow trout only) ❑ Porcupine Reservoir ❑ Recapture Reservoir ❑ Red Fleet Reservoir ❑ Sand Lake ❑ Smith - Moorehouse Reservoir ❑ Willard Bay Reservoir ❑ Yuba Reservoir | <p>Closed to black bass (largemouth and smallmouth) from April 1-fourth Saturday in June</p> <ul style="list-style-type: none"> ❑ Deer Creek Reservoir ❑ East Canyon Reservoir ❑ Echo Reservoir ❑ Flaming Gorge Reservoir ❑ Lake Powell ❑ Pineview Reservoir (Closed to the take of tiger musky Jan 1-Dec 31) ❑ Rockport Reservoir ❑ Starvation Reservoir ❑ Steinaker Reservoir |
|--|---|

UNDERWATER SPEARFISHING CLOSURES

Close Jordanelle and Lost Creek Reservoirs to underwater spearfishing for gamefish.

Carp may be taken in any water statewide with an open fishing season during the open season!!

RECOMMENDATIONS FOR THE DISPOSAL OF FISH

Catch-and-Kill Provisions passed by the Utah Legislature.

(1) The Wildlife Board may designate in guidebook or proclamation waters that anglers are required to kill any fish caught belonging to a specified species.

(2) A person shall immediately kill a fish caught in waters identified by the Wildlife Board as catch-and-kill for that species.

Recommendations for Disposal of Fish:

A person may either consume or dispose of a dead fish subject to a catch-and-kill regulation at the following locations:

- (a) in the water where the fish was caught;
- (b) buried on the shoreline of the water where the fish was caught;
- (c) a fish cleaning station;
- (d) the angler's place of residence; or
- (e) another location where disposal is authorized by law.

DISPOSAL ALLOWANCE WATERS AND SPECIES

All waters statewide: Common carp

- Blue Lake (tilapia)
- Deer Creek Reservoir (white bass, black bullhead)
- Flaming Gorge (burbot)
- Grantsville Reservoir (smallmouth bass)
- Lake Powell (striped bass)
- Red Fleet Reservoir (walleye)
- Utah Lake (northern pike)

DISPOSAL ALLOWANCE WATERS AND SPECIES

The mainstem of the Green, Colorado, and San Juan Rivers and the following tributaries

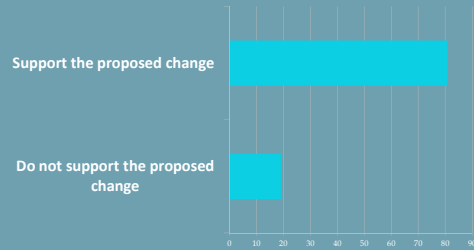
<p>Green River Tributaries:</p> <ul style="list-style-type: none"> •Ashley Creek •Brush Creek •Duchesne River •White River •Willow Creek •Price River •San Rafael River •Range Creek •Nine Mile Creek 	<p>Colorado River Tributaries:</p> <ul style="list-style-type: none"> •Dolores River •Mill Creek •Dirty Devil River
<p>San Juan River Tributaries:</p> <ul style="list-style-type: none"> •Comb Wash •Montezuma Creek •Recapture Creek 	

(burbot, northern pike, smallmouth bass and walleye)

COLORADO, GREEN, AND SAN JUAN RIVERS AND THEIR TRIBUTARIES "Catch and Kill"

- ☐ No limit for channel catfish
- ☐ No limit for burbot, northern pike, smallmouth bass or walleye. Anglers may not release any of these fish, which must be immediately killed

COLORADO, GREEN, AND SAN JUAN RIVERS AND THEIR TRIBUTARIES



COLORADO, GREEN, AND SAN JUAN RIVERS AND THEIR TRIBUTARIES

Green River, Carbon, Daggett, Emery, Grand, San Juan, Uintah and Wayne Counties, From the Flaming Gorge dam down river to the confluence of the Colorado River.

AND

Green River tributaries:

- Ashley Creek, Uintah County
- Brush Creek, Uintah County
- Duchesne River, Duchesne and Uintah Counties
- White River, Uintah County
- Willow Creek, Uintah County
- Price River, Carbon and Emery Counties
- San Rafael River, Emery County
- Range Creek, Carbon and Emery
- Nine Mile Creek, Carbon and Duchesne Counties

COLORADO, GREEN, AND SAN JUAN RIVERS AND THEIR TRIBUTARIES

Colorado River: Garfield, Grand, San Juan, Wayne Counties, From the Colorado state line down river to the Hite bridge on State Highway 95

AND

Colorado River Tributaries:

- Dolores River, Grand County
- Mill Creek, Grand County
- Dirty Devil River, Garfield and Wayne Counties

San Juan River, San Juan County, from Lake Powell to the Colorado/Utah state line

AND

San Juan Tributaries:

- Comb Wash, San Juan County
- Montezuma Creek, San Juan County
- Recapture Creek, San Juan County

SOUTHERN REGION

Brian Head Pond, Iron County

•Limit 2 fish (Community Fishery)

SOUTHERN REGION

Fishing from boats and float tubes is PROHIBITED

- Aspen-Mirror Lake, Kane County
- Duck Creek Springs Lake, Kane County
- Pine Valley Reservoir, Washington County

SOUTHERN REGION

Fishing from a boat with a motor of any kind is PROHIBITED

Anderson Meadow Reservoir, Beaver County
Barney Lake, Piute County
Boulder Mountain Lakes, Garfield and Wayne Counties (EXCEPT, Wide Hollow Reservoir, Pine Lake, and Lower Bowns Reservoir)
Little Reservoir, Beaver County

SOUTHERN REGION

Lake Powell, Garfield, Kane and San Juan Counties:

- Currently chumming is only allowed at Lake Powell and only with anchovies.
- Recommendation: All legal baits may be used as chum at Lake Powell (for example, Utah suckers, carp, redbreast shiners, commercially prepared baitfish etc)

NORTHEAST REGION

Currant Creek, Wasatch County confluence with Water Hollow to the headwaters

- Limit 4 trout

NORTHEAST REGION

Red Fleet Reservoir, Uintah County

- No limit for walleye. Anglers must not release any walleye they catch. All walleye must be immediately killed. "Catch and Kill"

CENTRAL REGION

Wasatch Mountain State Park Pond, Wasatch County

Limit two fish (Community Fishery)

CENTRAL REGION



Yuba Reservoir, Juab County:

- Limit 20 northern pike, only one northern pike over 36 inches
- Over 80% support on the on-line survey

NORTHERN REGION

Lost Creek Reservoir, Morgan County

Anglers may not fillet trout and salmon. Anglers may not remove their heads or tails while in the field or in transit.

NORTHERN REGION

Stateline Reservoir, Summit County

CLOSED to the possession of kokanee salmon with any red color Aug. 15 through 6 a.m. on the last Saturday of September.

Over 90% support on the on-line survey

NORTHERN REGION

Willard Bay Reservoir and inlet channel, Box Elder County

Possession and use of commercially sold, preserved gizzard shad is allowed, otherwise possession of gizzard shad, dead or alive is unlawful

NORTHERN REGION

ADDITIONS TO THE NON-GAME SPECIES RESTRICTED POSSESSION LIST

Add the following waters to the list where carp are the only nongame fish that can be taken:

Raft River, Box Elder County From the Utah/Idaho stateline (including all tributaries)

Weber River, Weber and Summit Counties

Yellow Creek, Summit County

SOUTHEAST REGION

Electric Lake, Emery County

- CLOSED to the possession of kokanee salmon with any red color Aug. 15 through 6 a.m. on the last Saturday of September.
- Over 90% support on the on-line survey

SOUTHEAST REGION

Electric Lake Tributaries, Emery County
From Electric Lake upstream to the headwaters

CLOSED to the possession of kokanee salmon with any red color Aug. 15 through 6 a.m. on the last Saturday of September

Over 90% support on the on-line survey

SNAGGING RULE

It is unlawful to intentionally snag or attempt to snag any fish. Fish hooked anywhere than the mouth must be released immediately.

"Snag" means to hook a fish elsewhere than in the mouth. The only exception to this rule is at Bear Lake for Bonneville cisco.

Thank You!!!!

Share your ideas with the DWR by June 15 annually
 Share ideas at RAC meetings
 E-mail ideas to: dwrcomment@utah.gov
 Mail ideas to:
 Sport Fisheries Program Coordinator
 Division of Wildlife Resources
 PO Box 146301
 Salt Lake City, UT 84114-6301
 Web based survey to seek public input on line
<http://wildlife.utah.gov/dwr/>

Scofield Reservoir

- ▣ Since 2005 the DWR has been attempting to use tiger trout to control Utah chubs at Scofield Reservoir
- ▣ Bear Lake cutthroat trout were added as an additional predator in 2009.
- ▣ Rainbow trout have been in decline in the reservoir since 2010. Most likely due to competition with chubs.
- ▣ Beginning in 2011, a study was undertaken in cooperation with USU to determine if the biological control of chubs is possible.
- ▣ This year we asked anglers if they would support ceasing rainbow trout stocking for three to five years in favor of adding additional predators to the reservoir.
- ▣ 90% of the respondents were in favor of the change.
- ▣ We are only contemplating this change if the results from the USU study indicate that biological control can work.

WILLARD BAY INLET CHANNEL

The opening of the Willard Bay Inlet Channel to angling:

- ▣ Does not adversely impact the walleye fishery
- ▣ Presents an additional angling opportunity
- ▣ Is supported by a majority of anglers (65% support versus 35% oppose)
- ▣ Can have acceptable compliance rates (15 citations from 610 contacts; 98% compliance)
- ▣ Can be effectively patrolled by law enforcement personnel

