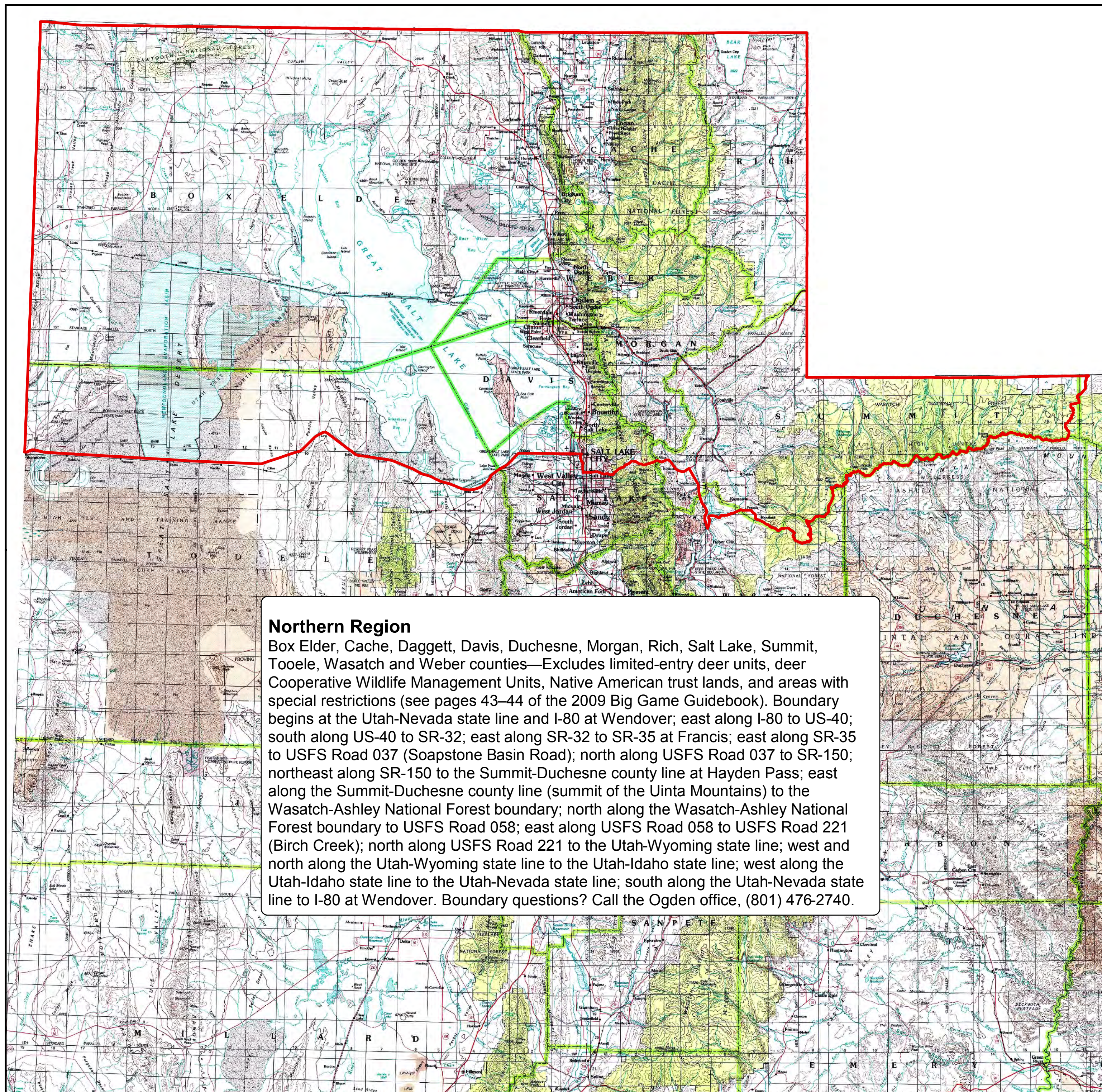


2009 General Buck Deer Boundary

Northern Region

Prepared June 10, 2009



Northern Region
Box Elder, Cache, Daggett, Davis, Duchesne, Morgan, Rich, Salt Lake, Summit, Tooele, Wasatch and Weber counties—Excludes limited-entry deer units, deer Cooperative Wildlife Management Units, Native American trust lands, and areas with special restrictions (see pages 43–44 of the 2009 Big Game Guidebook). Boundary begins at the Utah-Nevada state line and I-80 at Wendover; east along I-80 to US-40; south along US-40 to SR-32; east along SR-32 to SR-35 at Francis; east along SR-35 to USFS Road 037 (Soapstone Basin Road); north along USFS Road 037 to SR-150; northeast along SR-150 to the Summit-Duchesne county line at Hayden Pass; east along the Summit-Duchesne county line (summit of the Uinta Mountains) to the Wasatch-Ashley National Forest boundary; north along the Wasatch-Ashley National Forest boundary to USFS Road 058; east along USFS Road 058 to USFS Road 221 (Birch Creek); north along USFS Road 221 to the Utah-Wyoming state line; west and north along the Utah-Wyoming state line to the Utah-Idaho state line; west along the Utah-Idaho state line to the Utah-Nevada state line; south along the Utah-Nevada state line to I-80 at Wendover. Boundary questions? Call the Ogden office, (801) 476-2740.

Important Note: Although every effort is made to ensure the accuracy of this map, it is provided for general reference only and does not constitute the legal hunt boundary for this unit. Please refer to the appropriate proclamation for the authoritative boundary description of this hunt, as well as all relevant regulations. Please be advised that cooperative wildlife management units and some other areas are closed to hunting.

