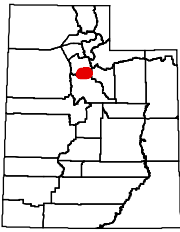


2009 Utah Antlerless Hunt Boundary



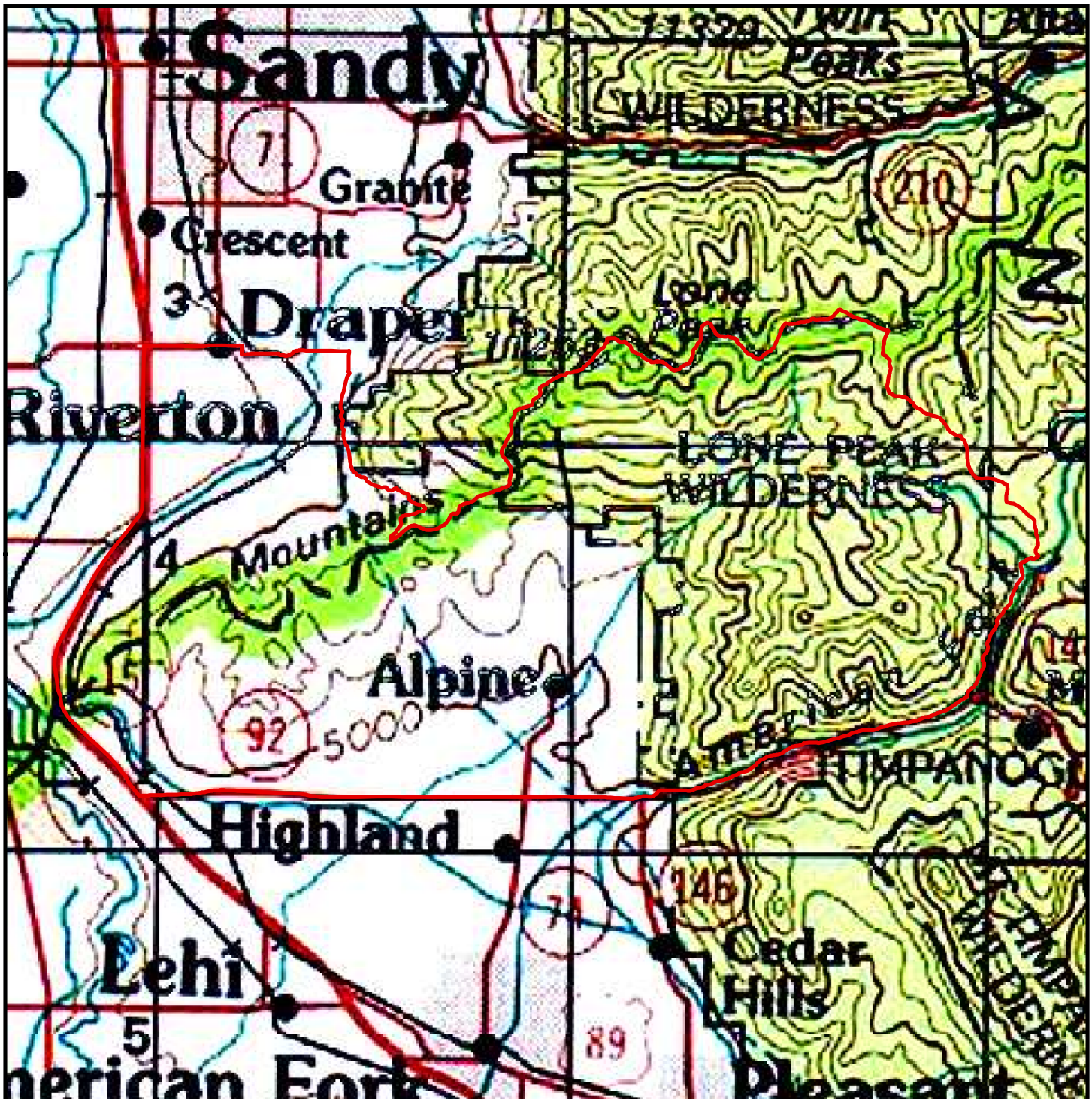
Wasatch Mountains, Alpine

611 (elk)

Salt Lake and Utah counties—Boundary begins at I-15 and SR-92 in Lehi; north on I-15 to 12300 South in Draper; east on to 970 East; south on this road to Pioneer Road (12340 South); east on the road to Upper Corner Canyon Road (2000 East); south and east on this road to the Salt Lake-Utah county line; east along this county line to a point adjacent to Red Pine Lake; south along the drainage divide to Dry Creek trail (043); south along this trail to USFS road 085; southwest on this road to SR-92; west on this road to I-15. Excludes all CWMUs. USGS 1:100,000 Maps: Provo. Boundary questions? Call the Springville office (801) 491-5678.



Prepared June 2, 2009



Important Note: Although every effort is made to ensure the accuracy of this map, it is provided for general reference only and does not constitute the legal hunt boundary for this unit. Please refer to the appropriate proclamation for the authoritative boundary description of this hunt, as well as all relevant regulations. Please be advised that cooperative wildlife management units and some other areas are closed to hunting.

