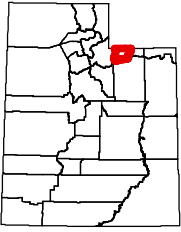


# 2009 Utah Antlerless Hunt Boundary



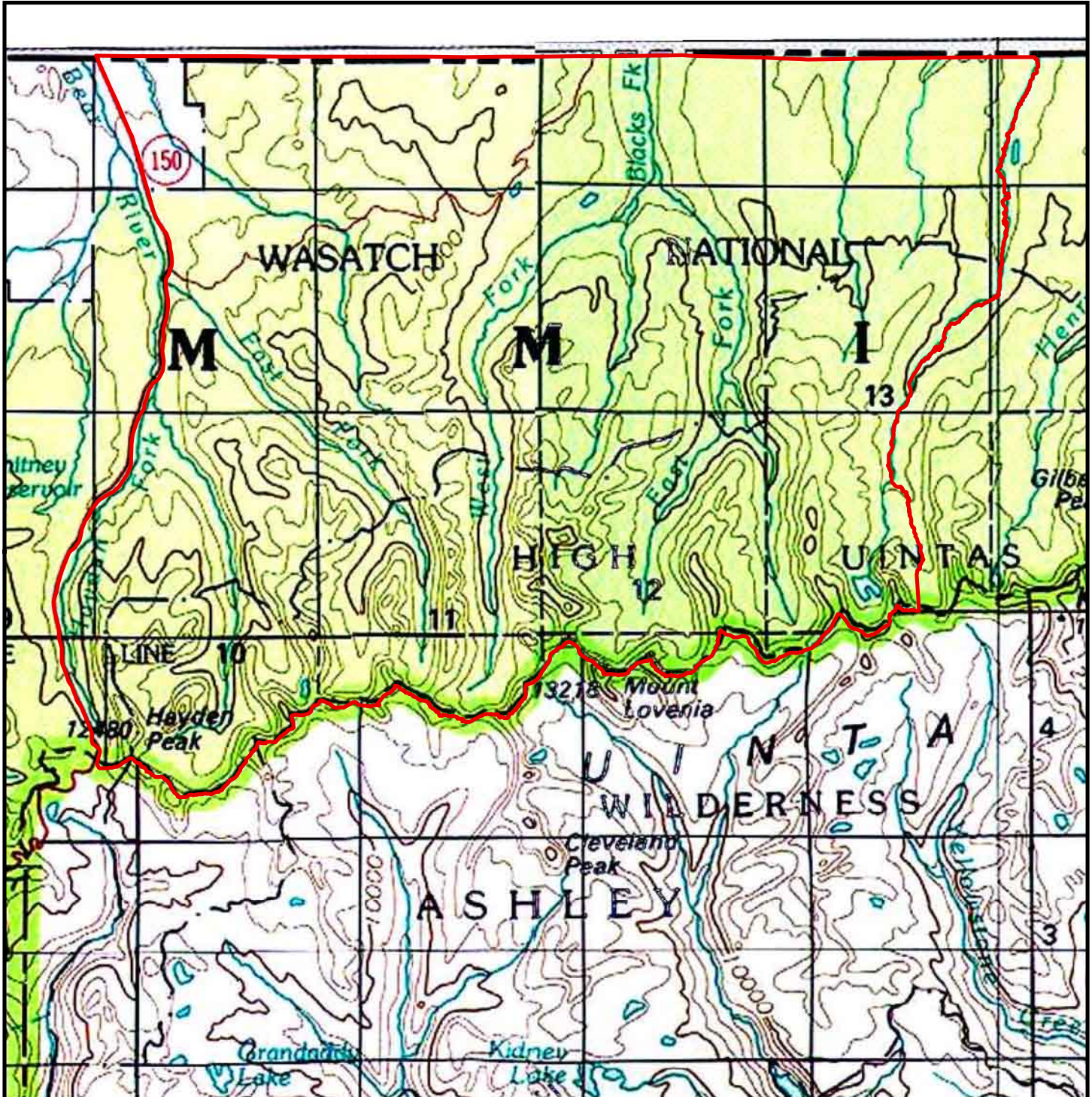
## North Slope, West Summit

934 (moose)

Summit County — Boundary begins at the East Fork of Smith's Fork River and the Utah-Wyoming state line; south along this river to the Summit-Duchesene county line (summit of the Uinta Mountains); west on this county line to SR-150 at Hayden Pass; north on SR-150 to the Utah-Wyoming state line; east on this line to the East Fork of Smith's Fork River.

Excludes all CWMUs. USGS 1:100,000 Maps: Kings Peak, Salt Lake. Boundary questions? Call Ogden office: (801) 476-2740.

Prepared June 2, 2009



**Important Note:** Although every effort is made to ensure the accuracy of this map, it is provided for general reference only and does not constitute the legal hunt boundary for this unit. Please refer to the appropriate proclamation for the authoritative boundary description of this hunt, as well as all relevant regulations. Please be advised that cooperative wildlife management units and some other areas are closed to hunting.

