



Photo #1



Photo #2

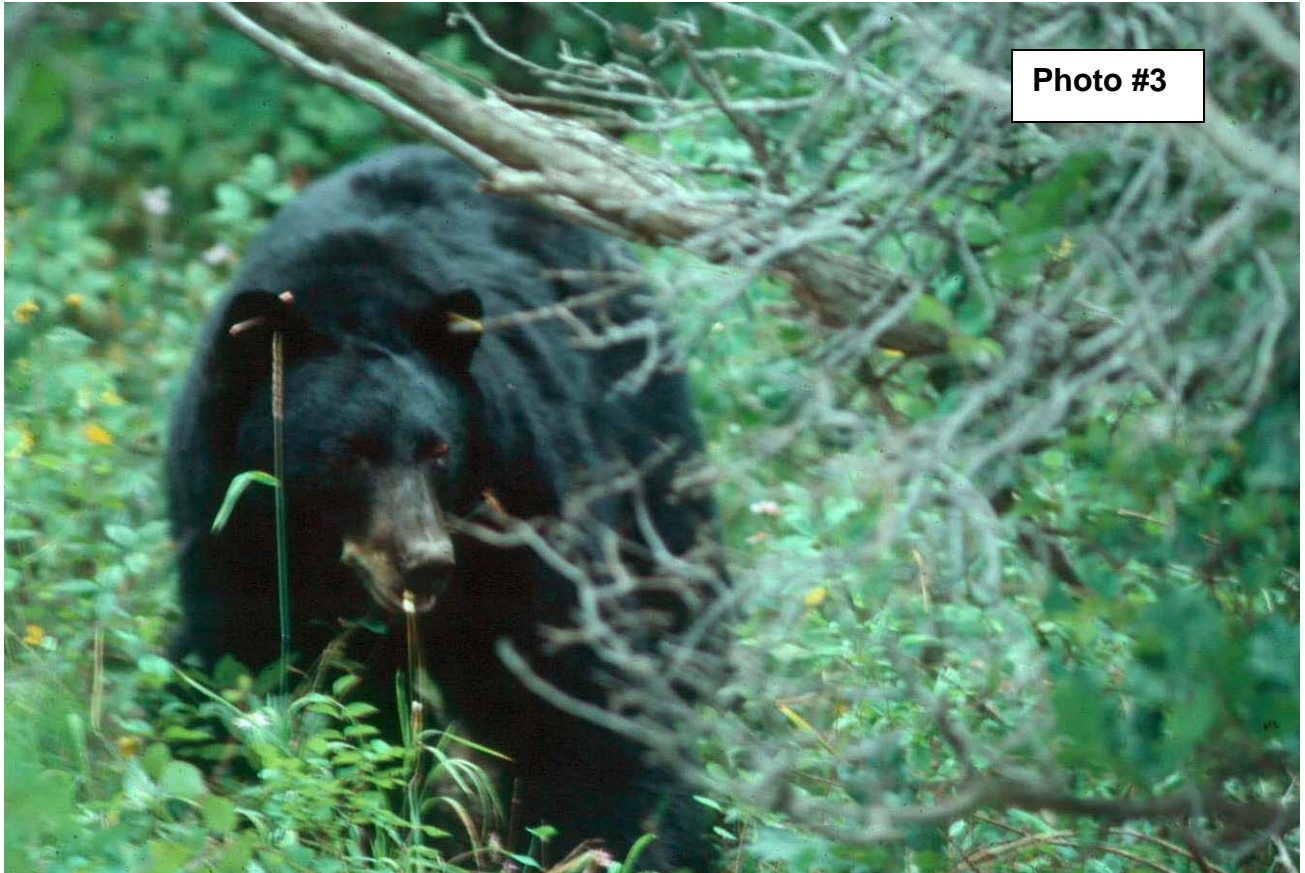


Photo #3



Photo #4



Photo #7



ANSWERS

Photo #1 – Cub (50 lbs)

Photo #2 - Adult Female with cubs (Sept)

Photo #3 – Adult Male (250 lbs)

Photo #4 – Cub (August)

Photo #5 – Subadult Male

Photo #6 – Cub (early June)

Photo #7 – Yearling Male (130 lbs)