

UTAH FURBEARER ANNUAL REPORT 2022-2023



Publication No. 23-18



UTAH FURBEARER ANNUAL REPORT 2022–2023

Prepared by:

Heather H. Bernales
Biometrician

and

Darren DeBlois
Mammals Program Coordinator

Publication No. 23-18

Annual Performance Report for Federal Aid Project W-65-M, segment 71

State of Utah
Department of Natural Resources
DIVISION OF WILDLIFE RESOURCES

J. Shirley
Division Director

TABLE OF CONTENTS

Definitions.....	1
Introduction.....	2
Methods.....	2
Results.....	3
Harvest by species.....	9
Badger	10
Beaver	12
Bobcat	15
Coyote	25
Gray fox	29
Kit fox	31
Marten	33
Mink.....	36
Muskrat	38
Raccoon.....	40
Red fox.....	43
Ringtail.....	46
Spotted skunk.....	48
Striped skunk	50
Weasel.....	52
Appendix: Utah furbearer management ecoregions	54

DEFINITIONS

Incidental harvest: Furbearers harvested in traps intended for a different furbearer species.

Trap year: Time frame corresponding to the 2022–23 furbearer seasons, as outlined in the 2022–23 Utah Furbearer Guidebook.

Trappers afield: Number of furbearer license holders who trapped furbearers during a particular trap year. License holders who took furbearers by means other than trapping, including shooting or with the aid of dogs, are included in this figure except for bobcat.

Total harvest: Number of furbearers of a particular species taken by means of trapping and hunting by furbearer license holders. This figure does not include harvest of unprotected wildlife, such as coyote, muskrat, red fox, raccoon, or striped skunk, taken by persons who did not purchase a furbearer license, nor does it include harvest of furbearers taken for creating a nuisance or causing damage.

Total set-days: Number of traps set during the furbearer season for the trapping of a particular species, multiplied by the number of days these traps were in the field. This figure pertains only to trapping, and does not include days afield by furbearer hunters or pursuers.

Pelt price: Average price paid for pelts of a specific furbearer species harvested in Utah, obtained mainly from a summary of the prices bid at the Utah Trappers Association fur auction, as well as prices from a survey of registered furdealers buying pelts harvested in Utah.

Wildlife Services harvest (coyote only): Number of coyotes taken by USDA-APHIS Wildlife Services in a particular year. Prior to 2006–07, Wildlife Services yearly harvest summaries applied to their fiscal year, which begins October 1 and ends September 30, although most harvest takes place during spring. Beginning in 2006–07, Wildlife Services harvest is reported for the period July 1 to June 30 of the following year.

INTRODUCTION

The furbearer harvest report presents furbearer harvest and trapper/hunter effort trends across the state of Utah, based on data collected from furbearer trappers and hunters. This report represents the furbearer portion of the Annual Performance Report for Federal Aid Project W-65-M, segment 71, grant agreement period July 1, 2022 through June 30, 2023. This Federal Aid project covers the 2022–23 trapping seasons. Additionally this report presents statewide trends since the early 1980s and population trend indicators for bobcats as well as the estimated economic value of Utah’s furbearer harvest each year. Furbearer harvest and trapper/hunter effort may have been more driven by pelt price than by availability, so annual fur harvest should not be used as the sole means to assess/project population sizes.

Furbearers included badger, beaver, bobcat, gray fox, kit fox, mink, marten, ringtail, spotted skunk, and weasel. A furbearer license was required to harvest any of these species, and additional permits were required to harvest bobcats and martens. There were no bag limits for furbearers, except bobcats. Each bobcat permit allowed a person to harvest one bobcat, and a single person could obtain up to 6 bobcat permits in 2022–23. Sales of bobcat permits were not limited. Season dates for badger, gray fox, kit fox, marten, ringtail, spotted skunk, and weasel were September 17, 2022 through March 1, 2023. Bobcat season was November 17, 2022 through March 1, 2023. Season dates for beaver and mink were September 17, 2022 through April 1, 2023.

Coyote, muskrat, red fox, raccoon, and striped skunk were not under the jurisdiction of the Division, and/or were unprotected. Those species could be taken year round without a license; therefore, results presented in this report do not include harvest by persons who did not purchase a furbearer license. It was prohibited to take black-footed ferret, fisher, lynx, river otter, wolf, and wolverine.

METHODS

Furbearer harvest and effort information was obtained from a telephone/web mixed-mode survey of a statistically-valid random sample of furbearer license holders. The accuracy of that survey was dependent upon the following assumptions: (1) a random sample was achieved (i.e., there was no response bias by those who harvested successfully versus those who did not), (2) respondents recorded or remembered data accurately and did not guess or lie, and (3) respondents clearly understood the questions.

Trappers who harvested bobcats and martens were required to bring the animals’ pelts to a Division office or officer to have permanent tags attached and to surrender the lower jaws. Bobcat and marten harvest data presented in this report, such as county of kill and sex of harvest, were collected at that time; as such, that information was not projected. Additional information on bobcat harvest, such as harvest effort by method, trappers-afield, number of sets, and number of days was determined by the survey mentioned in the preceding paragraph. Due to the small number of marten trappers in Utah, we did not attempt to survey marten trappers. Instead, since a separate permit is required to trap marten, we assumed that all those who purchased a marten permit attempted to trap marten.

To determine age structure of the bobcat harvest, a canine tooth from each bobcat jaw was sectioned, and aged using cementum annuli by Matson's Lab in Manhattan, Montana. Survival rates were estimated using the Chapman-Robson estimator. Pelt prices were obtained mainly from a summary of the prices bid at the Utah Trappers Association fur auction, as well as from a survey of registered furdealers buying pelts harvested in Utah.

Because some furbearer species in Utah were rare or not highly sought after by trappers, it was not possible to achieve sufficient sample sizes for these species to make valid statistical inferences. Although the trends for statewide harvest and effort were still valid, at the county level, the harvest and effort estimates had low precision and were likely inaccurate. As such, results by county were only reported for species with a sample size ≥ 20 .

RESULTS

License Sales and General Survey Results

Furbearer licenses were valid for 365 days from the date of purchase. We used the 365-day period of April 1 to March 31 to determine the total number of furbearer licenses sold for the furbearer season. A total of 1,780 furbearer licenses were sold for the 2022–23 season. The percentage of license holders who bought a furbearer license but did not attempt to harvest furbearers was 44%. The number of trappers afield in 2022–23 was 989.

Furbearer Harvest, Historical Trends, and Economic Value

The majority of the harvest taken by furbearer license holders in 2022–23 was of non-protected species—coyote, muskrat, and raccoon. Total harvest of regulated furbearer species (i.e., species with designated trapping seasons) was 3,286 in 2022–23, only slightly higher than the 10-yr low of the previous year.

The Utah Trappers Association resumed its annual Fur Sale in 2023 and this report includes average pelt prices from their website at https://www.utahtrappers.org/uploads/1/4/2/4/142452216/fur_sale_averages.pdf, accessed May 24, 2023.

Furbearer license sales and survey responses, Utah 1982–2022.

Trap year	Furbearer licenses sold			License holders surveyed		Projection factor	% license holders not afield
	Resident	Nonresident	Total	Total	Percent (%)		
1982–83	—	—	1325	664	50.1	—	—
1983–84	—	—	1367	616	45.1	—	—
1984–85	—	—	1491	806	54.1	—	—
1985–86	—	—	1424	680	47.8	—	—
1986–87	—	—	1342	585	43.6	—	—
1987–88	—	—	1576	731	46.4	—	—
1988–89	—	—	1318	721	54.7	—	—
1989–90	—	—	1084	597	55.1	—	—
1990–91	—	—	949	513	54.1	—	30.0
1991–92	—	—	1210	689	56.9	—	2.2
1992–93	—	—	1426	857	60.1	—	16.0
1993–94	—	—	1315	—	—	—	—
1994–95	—	—	1287	585	45.5	—	7.0
1995–96	—	—	1240	683	55.1	—	21.2
1996–97	—	—	1131	606	53.6	—	25.4
1997–98	—	—	1190	498	41.8	—	19.5
1998–99	—	—	1191	395	33.2	—	19.8
1999–00	1172	39	1211	458	37.8	2.6	11.6
2000–01	1204	20	1224	420	34.3	2.9	12.4
2001–02	956	21	977	302	30.9	3.2	11.6
2002–03	1409	40	1449	514	35.5	2.8	16.3
2003–04	1729	47	1776	597	33.6	3.0	16.9
2004–05	1830	65	1895	615	32.5	3.1	18.2
2005–06	1631	57	1688	260	15.4	6.5	27.7
2006–07	2029	81	2110	262	12.4	8.1	26.7
2007–08	2085	55	2140	563	26.3	3.8	31.8
2008–09	2045	57	2102	750	35.7	2.8	34.8
2009–10	1902	34	1936	798	41.2	2.4	30.2
2010–11	1788	29	1817	555	30.5	3.3	30.1
2011–12	1856	36	1892	531	28.1	3.6	33.3
2012–13	2080	52	2132	622	29.2	3.4	34.4
2013–14	2389	60	2449	726	29.6	3.4	35.4
2014–15	2802	67	2869	907	31.6	3.2	41.1
2015–16	2580	52	2632	714	27.1	3.7	35.6
2016–17	2078	54	2132	815	38.2	2.6	31.2
2017–18	1972	54	2026	864	42.6	2.3	44.1
2018–19	1836	44	1880	866	46.1	2.2	51.0
2019–20	1422	48	1470	712	48.4	2.1	39.5
2020–21	2275	58	2333	716	30.7	3.3	40.1

Furbearer license sales and survey responses, Utah 1982–2022 (continued).

Trap year	Furbearer licenses sold			License holders surveyed		Projection factor	% license holders not afield
	Resident	Nonresident	Total	Total	Percent (%)		
2021–22	1706	34	1740	700	40.2	2.5	40.9
2022–23	1726	54	1780	529	29.7	3.4	44.4
Average	1854	48	1647	626	39.6	2.8	27.5

Statewide total furbearer harvest* estimates by species, Utah 2013–2023.

Species	Trap year										Average 2013–23
	2013–14	2014–15	2015–16	2016–17	2017–18	2018–19	2019–20	2020–21	2021–22	2022–23	
Badger	371	417	648	486	297	369	227	306	298	158	358
Beaver	2021	1388	1511	973	945	741	950	929	1402	1319	1218
Bobcat	1870	2919	1683	1856	2954	1652	1173	1011	965	851	1693
Coyote	5784	6873	8001	5124	5259	3590	3484	6350	3774	4517	5276
Gray fox	1318	1015	1106	625	1067	669	429	756	495	603	808
Kit fox	14	145	99	154	44	13	103	62	22	31	69
Marten	16	22	9	2	15	11	8	4	0	1	9
Mink	1012	341	188	246	272	246	361	127	121	44	296
Muskrat	8764	6092	6175	3163	7265	3491	4992	4962	5787	2888	5358
Raccoon	5482	5437	4748	3628	5321	2660	4007	4464	3417	4118	4328
Red fox	2517	2272	1880	1625	1503	981	1179	788	1302	1198	1525
Ringtail	101	64	70	102	160	22	6	7	29	27	59
Spotted skunk	240	399	380	113	209	184	76	46	0	23	167
Striped skunk	1970	1875	2211	1250	2490	1564	1251	1251	1728	1033	1662
Weasel	13	76	30	236	21	167	14	10	122	229	92

*Total harvest includes incidental take.

Statewide furbearer trapping harvest statistics* by species, Utah 2022–23.

Species	Trappers afield	Trap harvest	Set-days	Set-days / furbearer	Furbearers / 1000 set-days	Furbearers / trapper
Badger	30	30	6821	227.4	4.4	1.0
Beaver	121	1215	20818	17.1	58.4	10.0
Bobcat	504	599	323667	540.3	1.9	1.2
Coyote	320	2201	329922	149.9	6.7	6.9
Gray fox	50	347	18194	52.4	19.1	6.9
Kit fox	0	—	—	—	—	—
Marten	128	1	—	—	—	0.0
Mink	24	34	2265	66.6	15.0	1.4
Muskrat	54	2692	20724	7.7	129.9	49.9
Raccoon	182	3267	62724	19.2	52.1	18.0
Red fox	145	1040	44648	42.9	23.3	7.2
Ringtail	3	7	20	2.9	350.0	2.3
Spotted skunk	3	3	707	235.7	4.2	1.0
Striped skunk	57	717	19708	27.5	36.4	12.6
Weasel	17	229	1682	7.3	136.1	13.5

*Does not include incidental harvest.

Statewide furbearer hunting harvest by species, Utah 2022–23.

Species	Hunters afield	Hunt harvest	Hunting days	Days / furbearer	Furbearers / hunter
Badger	17	7	71	10.1	0.4
Beaver	10	13	713	54.8	1.3
Bobcat	167	252	100	0.4	1.5
Coyote	239	2054	7990	3.9	8.6
Gray fox	0	—	—	—	—
Kit fox	3	7	34	4.9	2.3
Mink	0	—	—	—	—
Muskrat	7	34	13	0.4	4.9
Raccoon	54	353	818	2.3	6.5
Red fox	27	40	363	9.1	1.5
Ringtail	3	0	3	—	0.0
Spotted skunk	0	—	—	—	—
Striped skunk	13	30	24	0.8	2.3
Weasel	0	—	—	—	—

Number of furbearers harvested in traps set for other species (i.e. incidental take), Utah 2022–23.

Species	Incidental harvest	Trap / hunt harvest	Total harvest	% incidental harvest
Badger	121	37	158	76.6
Beaver	91	1228	1319	6.9
Bobcat*	33	851	851	3.9
Coyote	262	4255	4517	5.8
Gray fox	256	347	603	42.5
Kit fox	24	7	31	77.4
Marten	0	1	1	0.0
Mink	10	34	44	22.7
Muskrat	162	2726	2888	5.6
Raccoon	498	3620	4118	12.1
Red fox	118	1080	1198	9.8
Ringtail	20	7	27	74.1
Spotted skunk	20	3	23	87.0
Striped skunk	289	744	1033	28.0
Weasel	0	229	229	0.0
Total	1904	15169	17040	11.2

*Incidental bobcat harvest are accounted for in trap harvest.

HARVEST BY SPECIES

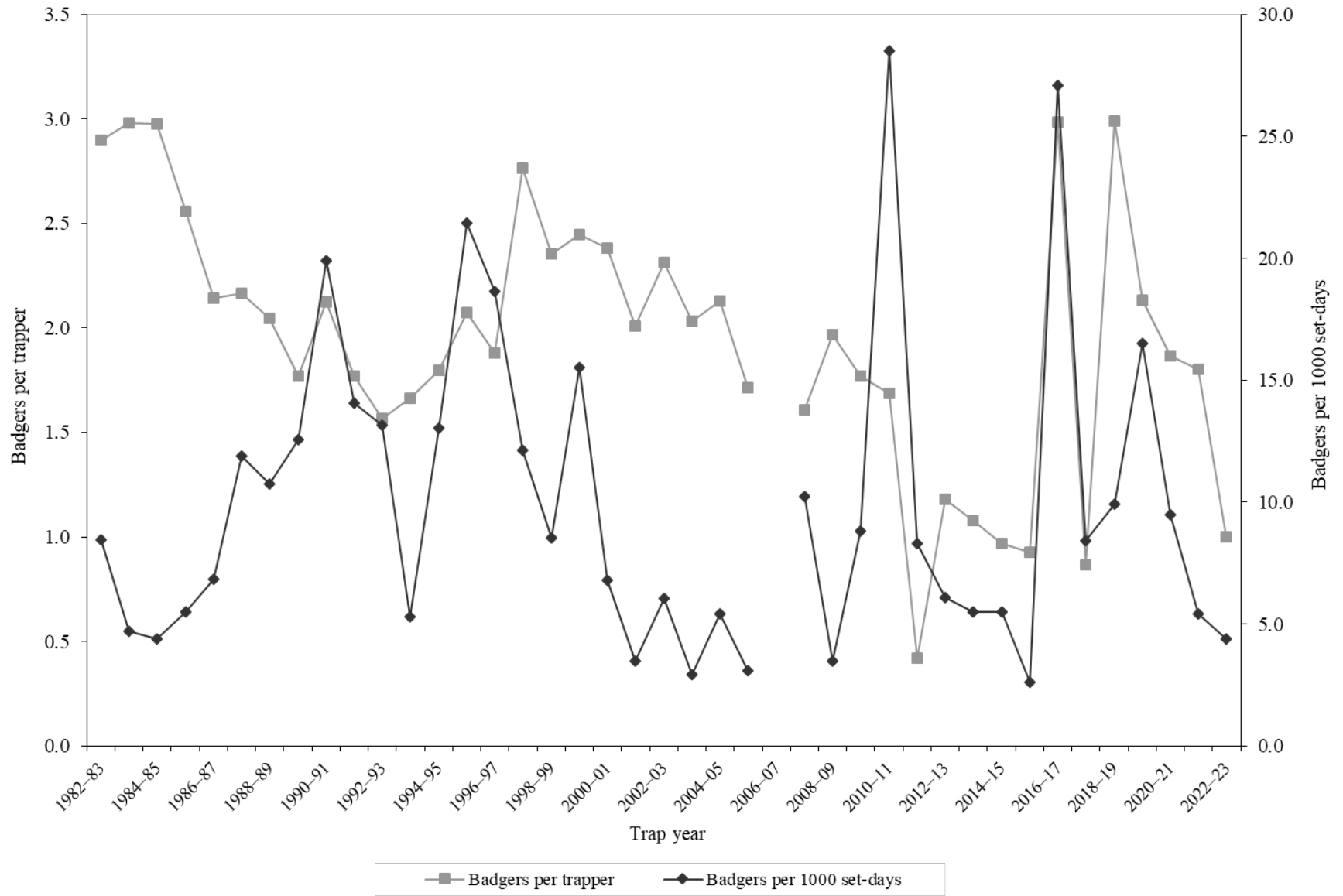
BADGER

Statewide badger harvest statistics*, Utah 1982–2023.

Trap year	Trappers afield	Incidental harvest	Trap harvest	Hunt harvest	Set-days / badger	Badgers / 1000 set-days	Badgers / trapper	Pelt price (\$)
1982–83	250	—	725	—	118	8.5	2.9	8.20
1983–84	188	—	560	—	212	4.7	3.0	8.56
1984–85	225	—	670	—	227	4.4	3.0	10.14
1985–86	194	—	496	—	182	5.5	2.6	3.96
1986–87	198	—	424	—	146	6.8	2.1	7.64
1987–88	212	—	459	—	84	11.9	2.2	6.04
1988–89	204	—	417	—	93	10.7	2.0	4.66
1989–90	207	—	366	—	80	12.5	1.8	4.78
1990–91	81	—	172	—	50	19.9	2.1	7.27
1991–92	134	—	237	—	71	14.1	1.8	8.50
1992–93	148	—	232	—	76	13.2	1.6	9.95
1993–94	143	—	238	—	188	5.3	1.7	7.18
1994–95	182	—	327	—	77	13.0	1.8	13.93
1995–96	133	—	276	—	47	21.4	2.1	10.52
1996–97	118	—	222	—	54	18.7	1.9	13.01
1997–98	98	—	271	—	83	12.1	2.7	6.59
1998–99	135	—	318	—	117	8.5	2.4	16.96
1999–00	177	—	433	—	64	15.5	2.4	13.04
2000–01	189	—	450	—	147	6.8	2.4	17.18
2001–02	137	—	275	—	288	3.5	2.0	15.60
2002–03	234	—	541	—	165	6.0	2.3	13.73
2003–04	223	—	453	—	341	2.9	2.0	18.72
2004–05	203	—	432	—	184	5.4	2.1	13.66
2005–06	70	—	120	—	324	3.1	1.7	15.02
2006–07	187	—	—	—	—	—	—	18.07
2007–08	171	—	275	—	98	10.2	1.6	14.14
2008–09	146	—	287	—	282	3.5	2.0	17.41
2009–10	78	196	138	—	113	8.8	1.8	19.34
2010–11	115	115	194	—	35	28.5	1.7	17.27
2011–12	110	82	46	89	120	8.3	0.4	20.44
2012–13	99	147	117	38	163	6.1	1.2	17.36
2013–14	91	216	98	57	180	5.5	1.1	15.73
2014–15	92	297	89	32	183	5.5	1.0	11.69
2015–16	103	464	140	44	384	2.6	0.9	7.63
2016–17	78	222	233	31	37	27.1	3.0	10.28
2017–18	91	145	79	68	119	8.4	0.9	6.51
2018–19	85	115	161	93	101	9.9	3.0	9.30
2019–20	60	99	93	35	61	16.5	2.1	18.12
2020–21	91	137	98	72	105	9.5	1.9	—
2021–22	80	196	40	62	186	5.4	1.8	45.17
2022–23	47	121	30	7	225	4.4	1.0	15.44
Average	143	182	281	52	145	9.9	1.9	12.97

*Trappers and badgers per trapper include hunters and their harvest. Set-days per badger and badgers per 1000 set-days are based only on trapping activity, and do not include hunt harvest or hunter-days afield.

.Statewide badger harvest trends, Utah 1982–2023.



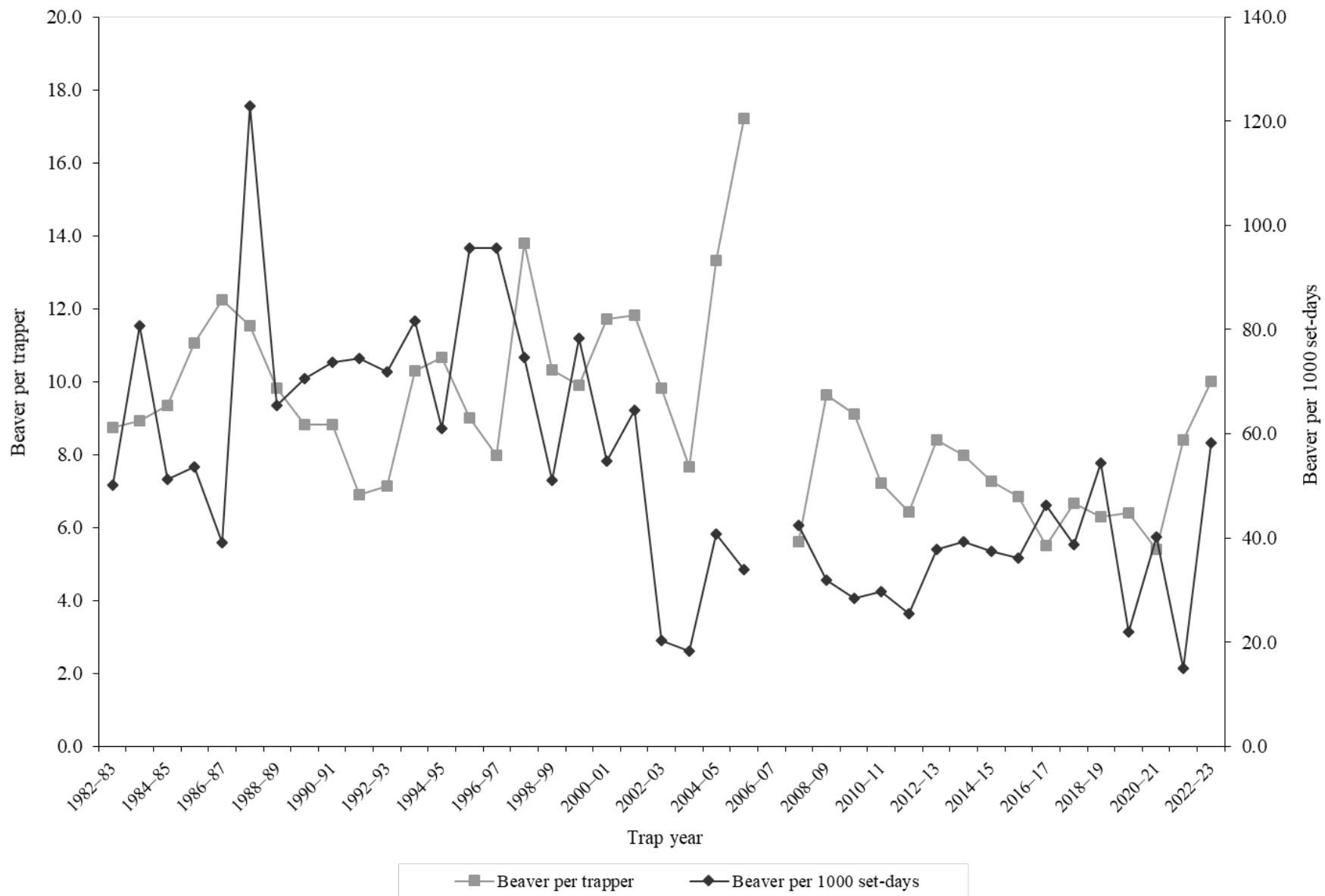
BEAVER

Statewide beaver harvest statistics*, Utah 1982–2023.

Trap year	Trappers afield	Incidental harvest	Trap harvest	Hunt harvest	Set-days / beaver	Beavers / 1000 set-days	Beavers / trapper	Pelt price (\$)
1982–83	181	—	1584	—	20	50.1	8.8	12.89
1983–84	200	—	1788	—	12	80.8	8.9	14.10
1984–85	285	—	2664	—	20	51.3	9.3	16.44
1985–86	293	—	3242	—	19	53.7	11.1	14.64
1986–87	338	—	4138	—	26	39.2	12.2	22.64
1987–88	409	—	4716	—	8	122.9	11.5	14.67
1988–89	277	—	2721	—	15	65.4	9.8	10.02
1989–90	390	—	3436	—	14	70.5	8.8	11.93
1990–91	176	—	1551	—	14	73.8	8.8	6.49
1991–92	216	—	1492	—	13	74.5	6.9	8.94
1992–93	134	—	956	—	14	71.9	7.1	7.74
1993–94	171	—	1761	—	12	81.6	10.3	9.59
1994–95	239	—	2551	—	16	61.0	10.7	12.65
1995–96	170	—	1530	—	10	95.7	9.0	13.40
1996–97	163	—	1299	—	10	95.7	8.0	21.15
1997–98	210	—	2896	—	13	74.6	13.8	13.58
1998–99	286	—	2950	—	20	51.0	10.3	9.37
1999–00	185	—	1830	—	13	78.4	9.9	10.98
2000–01	170	—	1992	—	18	54.7	11.7	10.32
2001–02	143	—	1689	—	16	64.5	11.8	10.85
2002–03	175	—	1720	—	49	20.3	9.8	9.47
2003–04	232	—	1781	—	55	18.2	7.7	14.10
2004–05	200	—	2664	—	25	40.7	13.3	13.91
2005–06	130	—	2239	—	29	33.9	17.2	17.75
2006–07	122	—	—	—	—	—	—	16.31
2007–08	133	—	745	—	24	42.5	5.6	17.50
2008–09	121	—	1165	—	31	31.9	9.6	13.15
2009–10	209	6	1904	—	35	28.5	9.1	11.60
2010–11	144	13	1039	—	34	29.8	7.2	12.76
2011–12	157	18	1008	—	39	25.4	6.4	15.61
2012–13	267	17	2245	14	26	37.9	8.4	20.26
2013–14	240	98	1913	10	25	39.3	8.0	14.33
2014–15	183	47	1332	9	27	37.5	7.3	11.60
2015–16	217	22	1486	4	28	36.1	6.8	7.46
2016–17	176	3	970	0	22	46.3	5.5	11.20
2017–18	141	5	940	0	26	38.8	6.7	6.34
2018–19	113	9	645	87	18	54.4	6.3	—
2019–20	138	81	863	6	46	21.9	6.4	9.15
2020–21	176	10	909	10	25	40.3	5.4	—
2021–22	137	293	1104	5	67	15.0	8.4	14.89
2022–23	131	91	1215	13	17	58.3	10.0	15.27
Average	199	51	1867	14	24	52.7	9.1	12.95

*Trappers and beavers per trapper include hunters and their harvest. Set-days per beaver and beavers per 1000 set-days are based only on trapping activity, and do not include hunt harvest or hunter-days afield

Statewide beaver harvest trends, Utah 1982–2023.



Beaver trapping harvest statistics by county and ecoregion, Utah 2022–23.

County	n	Trappers afield	Trap harvest	Traps set	Trapping days	Set-days	Set-days / beaver	Beavers / 1000 set-days	Beavers / trapper
Beaver	3	10	50	71	77	552	10.9	91.5	5.0
Box Elder	1	3	40	20	101	606	15.0	66.7	12.0
Iron	0	0	—	—	—	—	—	—	—
Juab	1	3	50	27	47	377	7.5	133.9	15.0
Millard	0	0	—	—	—	—	—	—	—
Tooele	0	0	—	—	—	—	—	—	—
Great Basin totals	5	17	141	118	225	1534	10.9	92.1	8.4
Cache	4	13	71	91	205	1770	25.0	39.9	5.3
Davis	1	3	10	13	91	363	36.0	27.8	3.0
Morgan	2	7	175	182	182	3452	19.7	50.7	26.0
Piute	0	0	—	—	—	—	—	—	—
Rich	1	3	84	67	50	1009	12.0	83.3	25.0
Salt Lake	0	0	—	—	—	—	—	—	—
Sanpete	0	0	—	—	—	—	—	—	—
Sevier	2	7	37	64	148	1756	47.5	21.1	5.5
Summit	0	0	—	—	—	—	—	—	—
Utah	7	24	91	131	548	2961	32.6	30.7	3.9
Wasatch	2	7	44	24	148	545	12.5	80.2	6.5
Weber	4	13	400	350	195	5216	13.0	76.8	29.8
Rocky Mountain totals	23	77	912	922	1568	17073	18.7	53.4	11.8
Daggett	0	0	—	—	—	—	—	—	—
Duchesne	4	13	67	98	135	1248	18.6	53.9	5.0
Uintah	5	17	57	87	141	670	11.7	85.4	3.4
Uintah Basin totals	9	30	124	185	276	1918	15.4	64.9	4.1
Carbon	1	3	3	3	10	10	3.0	333.3	1.0
Emery	3	10	30	34	94	215	7.1	140.6	3.0
Garfield	0	0	—	—	—	—	—	—	—
Grand	0	0	—	—	—	—	—	—	—
Kane	0	0	—	—	—	—	—	—	—
San Juan	0	0	—	—	—	—	—	—	—
Washington	1	3	3	7	34	67	20.0	50.0	1.0
Wayne	0	0	—	—	—	—	—	—	—
Colorado Plateau totals	5	17	37	44	138	293	7.9	126.4	2.2
Unknown	0	0	—	—	—	—	—	—	—
Statewide totals*	36	121	1215	1269	2207	20818	17.1	58.3	10.0

*Statewide totals for sample size and trappers afield are not totals of the columns because trappers trapped multiple counties.

BOBCAT

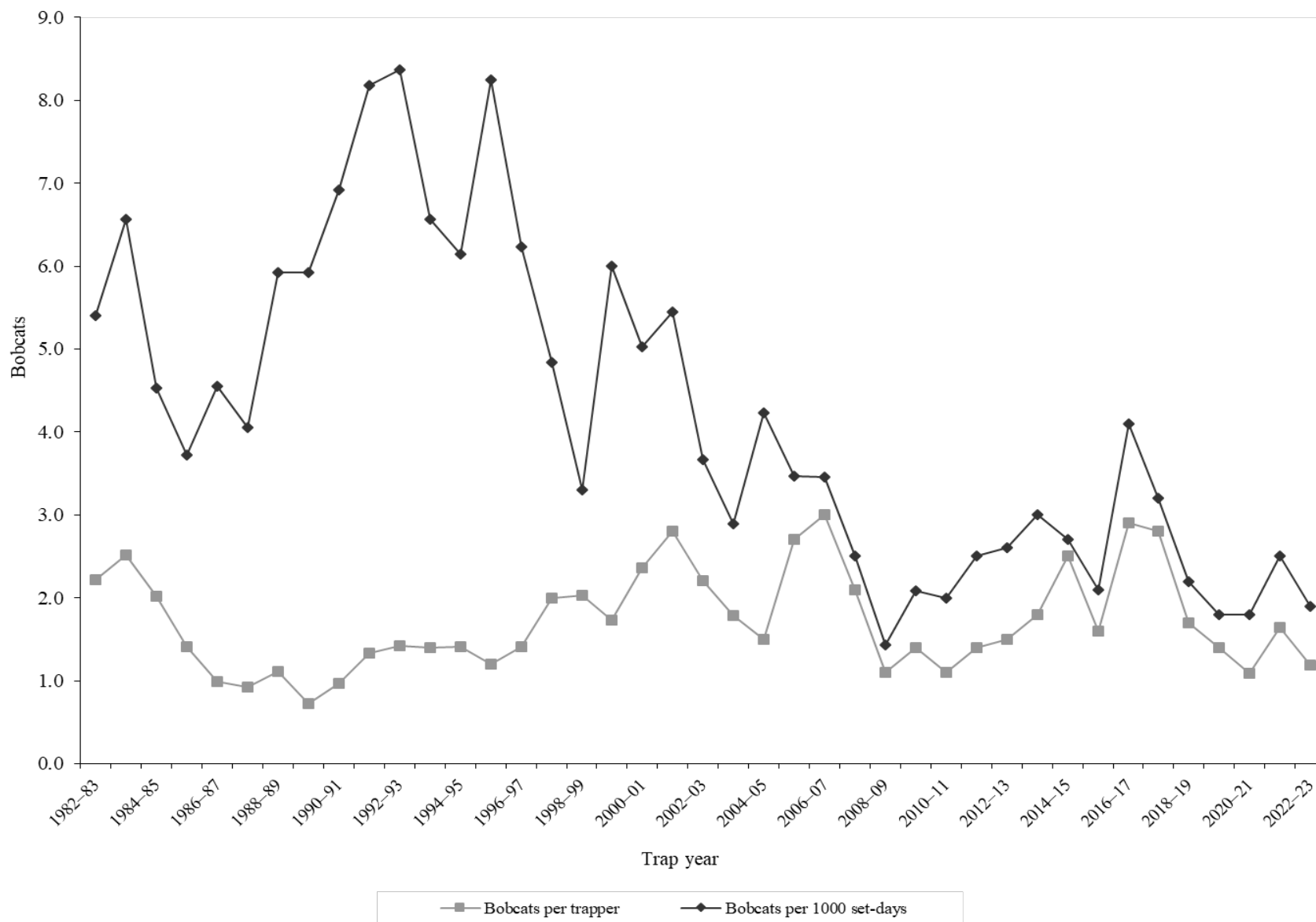
Statewide bobcat trapping harvest statistics, Utah 1982–2023.

Trap year	Trappers afield	Trap harvest	Set-days	Set-days / bobcat	Bobcats / 1000 set-days	Bobcats / trapper	Pelt price (\$)
1982–83	1145	2540	469979	185	5.4	2.2	171.00
1983–84	1050	2640	401841	152	6.6	2.5	189.00
1984–85	1253	2532	559480	221	4.5	2.0	202.00
1985–86	1083	1530	411493	269	3.7	1.4	197.00
1986–87	1036	1024	224778	220	4.6	1.0	309.00
1987–88	1108	1023	252680	247	4.0	0.9	245.00
1988–89	941	1042	175990	169	5.9	1.1	221.00
1989–90	1167	843	142360	169	5.9	0.7	102.00
1990–91	542	527	76218	145	6.9	1.0	87.00
1991–92	726	968	118293	122	8.2	1.3	104.00
1992–93	827	1171	139949	120	8.4	1.4	90.00
1993–94	900	1256	191367	152	6.6	1.4	118.60
1994–95	914	1293	210522	163	6.1	1.4	70.02
1995–96	749	896	108594	121	8.3	1.2	79.51
1996–97	615	866	138899	160	6.2	1.4	147.80
1997–98	619	1234	255147	207	4.8	2.0	60.89
1998–99	1031	2092	633774	303	3.3	2.0	55.86
1999–00	828	1430	238152	167	6.0	1.7	82.64
.2000–01	852	2008	399609	199	5.0	2.4	93.56
2001–02	666	1866	342678	184	5.4	2.8	147.66
2002–03	984	2176	593692	273	3.7	2.2	270.33
2003–04	1133	2027	701383	346	2.9	1.8	203.17
2004–05	1300	1954	462019	236	4.2	1.5	221.65
2005–06	979	2625	757380	289	3.5	2.7	358.56
2006–07	1017	3037	877870	289	3.5	3.0	197.53
2007–08	985	2091	836519	400	2.5	2.1	388.43
2008–09	1630	1796	1258813	701	1.4	1.1	238.69
2009–10	717	1017	488709	481	2.1	1.4	223.71
2010–11	771	846	416474	492	2.0	1.1	368.95
2011–12	755	1094	437912	400	2.5	1.4	456.16
2012–13	836	1214	475902	392	2.6	1.5	560.96
2013–14	953	1690	562430	333	3.0	1.8	407.44
2014–15	1105	2776	1036043	373	2.7	2.5	223.11
2015–16	982	1543	739720	479	2.1	1.6	151.63
2016–17	571	1657	402966	243	4.1	2.9	273.23
2017–18	957	2683	833255	311	3.2	2.8	236.45
2018–19	796	1372	611330	446	2.2	1.7	388.43
2019–20	701	1007	553322	550	1.8	1.4	264.14
2020–21	762	833	454600	546	1.8	1.1	—
2021–22	498	815	329996	405	2.5	1.6	415.16
2022–23	504	599	323667	540	1.9	1.2	376.22
Average	902	1552	454776	297	4.2	1.7	224.94

Statewide bobcat hunting harvest statistics, Utah 2005–2023.

Trap year	Hunters afield	Hunt harvest	Hunter-days afield	Hunter-days / bobcat	Bobcats / hunter
2005–06	612	301	8194	27	0.5
2006–07	440	340	10408	31	0.8
2007–08	557	346	10089	29	0.6
2008–09	438	266	7360	28	0.6
2009–10	370	150	5253	35	0.4
2010–11	355	156	5888	38	0.4
2011–12	329	151	4146	28	0.5
2012–13	206	151	2739	18	0.7
2013–14	182	180	2901	16	1.0
2014–15	305	143	4203	29	0.5
2015–16	298	140	3819	27	0.5
2016–17	267	199	3446	17	0.7
2017–18	341	262	4620	18	0.8
2018–19	211	280	2832	10	1.3
2019–20	243	166	3330	20	0.7
2020–21	242	178	2970	17	0.7
2021–22	208	150	2314	15	0.7
2022–23	167	252	2955	12	1.5
Average	321	212	4859	23	0.7

Statewide bobcat trapping harvest trends, Utah 1982–2023.



Bobcat trapping harvest statistics by county and ecoregion, Utah 2022–23.

County	n	Trappers afield	Trap harvest**	Traps set	Trapping days	Set-days	Set-days / bobcat	Bobcats / 1000 set-days	Bobcats / trapper
Beaver	9	33	37	1907	500	34423	930	1.1	1.1
Box Elder	10	37	46	1063	396	12358	269	3.7	1.2
Iron	5	19	27	337	218	5514	204	4.9	1.4
Juab	6	22	31	759	159	4237	137	7.3	1.4
Millard	8	30	28	1411	511	22657	809	1.2	0.9
Tooele	10	37	12	1555	411	20861	1738	0.6	0.3
Great Basin totals	48	178	181	7033	2196	100050	553	1.8	1.0
Cache	1	4	2	37	—	—	—	—	0.5
Davis	3	11	0	289	59	1578	—	0.0	0.0
Morgan	5	19	2	630	148	6899	3450	0.3	0.1
Piute	0	0	7	—	—	—	—	—	—
Rich	2	7	0	148	167	3333	—	0.0	0.0
Salt Lake	1	4	1	111	44	1333	1333	0.8	0.3
Sanpete	5	19	11	1059	107	6977	634	1.6	0.6
Sevier	17	63	56	2967	1111	62312	1113	0.9	0.9
Summit	3	11	12	496	89	3259	272	3.7	1.1
Utah	9	33	25	1544	346	18557	742	1.3	0.8
Wasatch	5	19	1	318	137	2285	2285	0.4	0.1
Weber	3	11	5	237	107	5159	1032	1.0	0.5
Rocky Mountain totals	54	200	122	7837	2316	111692	916	1.1	0.6
Daggett	1	4	4	222	37	2222	556	1.8	1.0
Duchesne	9	33	19	1189	363	12732	670	1.5	0.6
Uintah	10	37	29	1144	481	16165	557	1.8	0.8
Uintah Basin totals	20	74	52	2555	881	31119	598	1.7	0.7
Carbon	3	11	23	296	111	3111	135	7.4	2.1
Emery	4	15	33	674	119	5674	172	5.8	2.2
Garfield	9	33	60	2046	433	19246	321	3.1	1.8
Grand	1	4	9	237	22	1422	158	6.3	2.3
Kane	5	19	41	1041	304	18587	453	2.2	2.2
San Juan	5	19	24	324	119	1444	60	16.6	1.3
Washington	8	30	41	1330	530	31323	764	1.3	1.4
Wayne	0	0	13	—	—	—	—	—	—
Colorado Plateau totals	35	130	244	5947	1637	80807	331	3.0	1.9
Unknown	2	7	0	37	218	1848	—	0.0	0.0
Statewide totals*	136	504	599	23372	7031	323667	540	1.9	1.2

*Statewide totals for sample size and trappers afield are not totals of the columns because trappers trapped multiple counties.

**Total harvest numbers are from pelt check-in, while numbers of trappers afield and effort are determined from harvest survey.

Bobcat hunting harvest statistics by county and ecoregion, Utah 2022–23.

County	n	Hunters afield	Hunt harvest**	Hunter-days afield	Hunter-days / bobcat	Bobcats / hunter
Beaver	3	11	6	467	77.8	0.5
Box Elder	6	22	3	207	69.0	0.1
Iron	2	7	3	63	21.0	0.4
Juab	5	19	23	267	11.6	1.2
Millard	2	7	22	33	1.5	3.1
Tooele	6	22	5	270	54.0	0.2
Great Basin totals	24	89	62	1307	21.1	0.7
Cache	1	4	9	37	4.1	2.3
Davis	1	4	1	111	111.0	0.3
Morgan	3	11	4	44	11.0	0.4
Piute	0	0	6	—	—	—
Rich	1	4	4	137	34.3	1.0
Salt Lake	0	0	—	—	—	—
Sanpete	3	11	31	130	4.2	2.8
Sevier	1	4	11	15	1.4	2.8
Summit	1	4	4	30	7.5	1.0
Utah	6	22	28	141	5.0	1.3
Wasatch	0	0	17	—	—	—
Weber	1	4	4	74	18.5	1.0
Rocky Mountain totals	18	67	119	719	6.0	1.8
Daggett	1	4	2	4	2.0	0.5
Duchesne	6	22	10	200	20.0	0.5
Uintah	6	22	11	389	35.4	0.5
Uintah Basin totals	13	48	23	593	25.8	0.5
Carbon	1	4	3	37	12.3	0.8
Emery	1	4	9	19	2.1	2.3
Garfield	2	7	9	37	4.1	1.3
Grand	0	0	—	—	—	—
Kane	0	0	8	—	—	—
San Juan	2	7	5	22	4.4	0.7
Washington	3	11	6	74	12.3	0.5
Wayne	3	11	5	59	11.8	0.5
Colorado Plateau totals	12	44	45	248	5.5	1.0
Unknown	1	4	3	89	29.7	0.8
Statewide totals*	45	167	252	2955	11.7	1.5

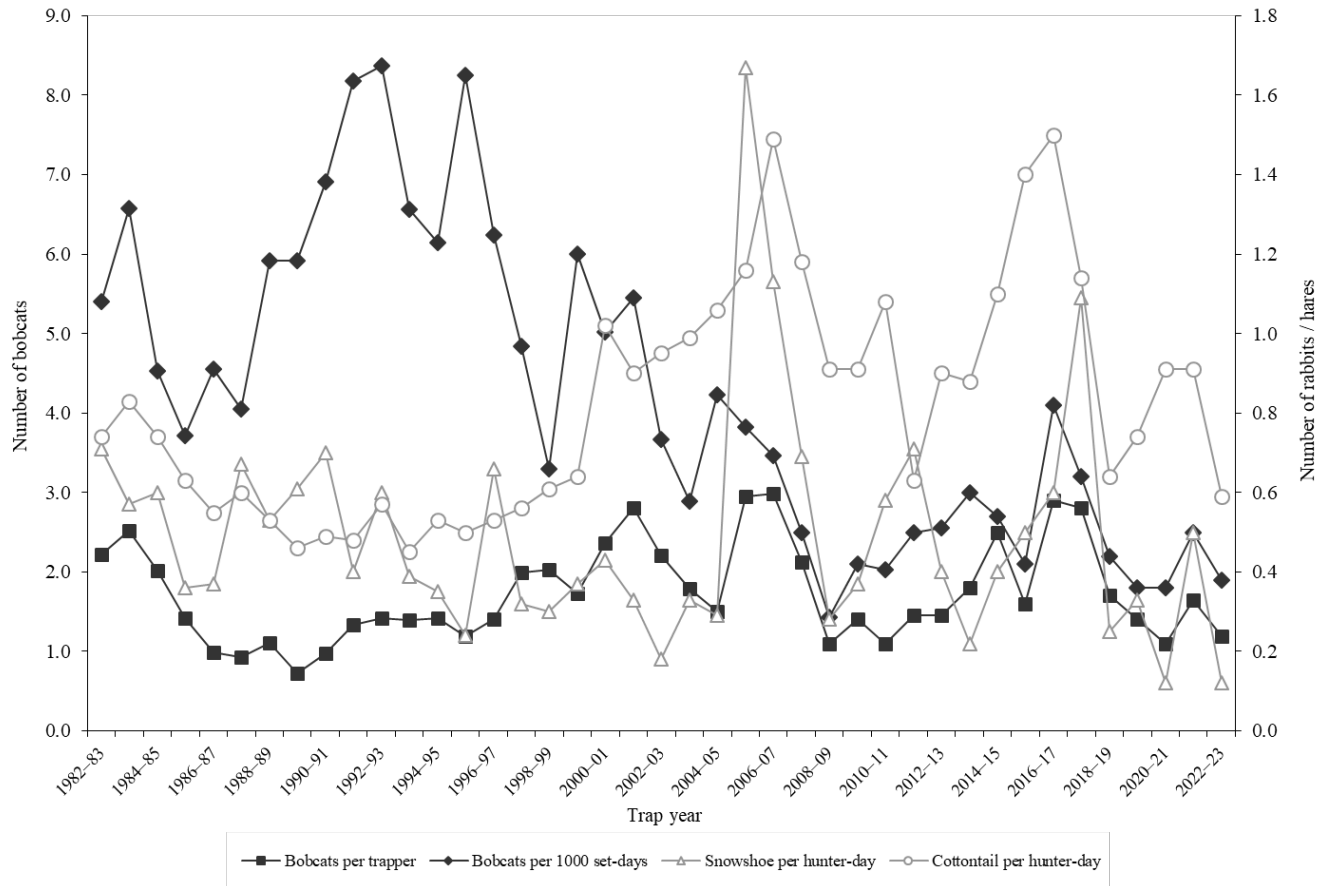
*Statewide totals for sample size and hunters afield are not totals of the columns because hunters hunted multiple counties.

**Total harvest numbers are from pelt check-in, while numbers of hunters afield and effort are determined from harvest survey.

Prey index

Lagomorph densities are generally considered to be a good indicator of bobcat recruitment and survival because high lagomorph populations provide an essential prey base for dispersing bobcats. When lagomorph populations are high or increasing, the bobcat population has also increased or at least remained stable. Thus, low populations of lagomorphs will reduce the likelihood of younger bobcats surviving to the next year. Cottontail rabbit and snowshoe hare data were from the Utah Upland Game Annual Report 2022–23 (2022–23 upland game seasons).

Relationships in harvest statistics between bobcat and prey, Utah 1982–2023.



Bobcat harvest age and sex ratios, Utah 1985–2023.

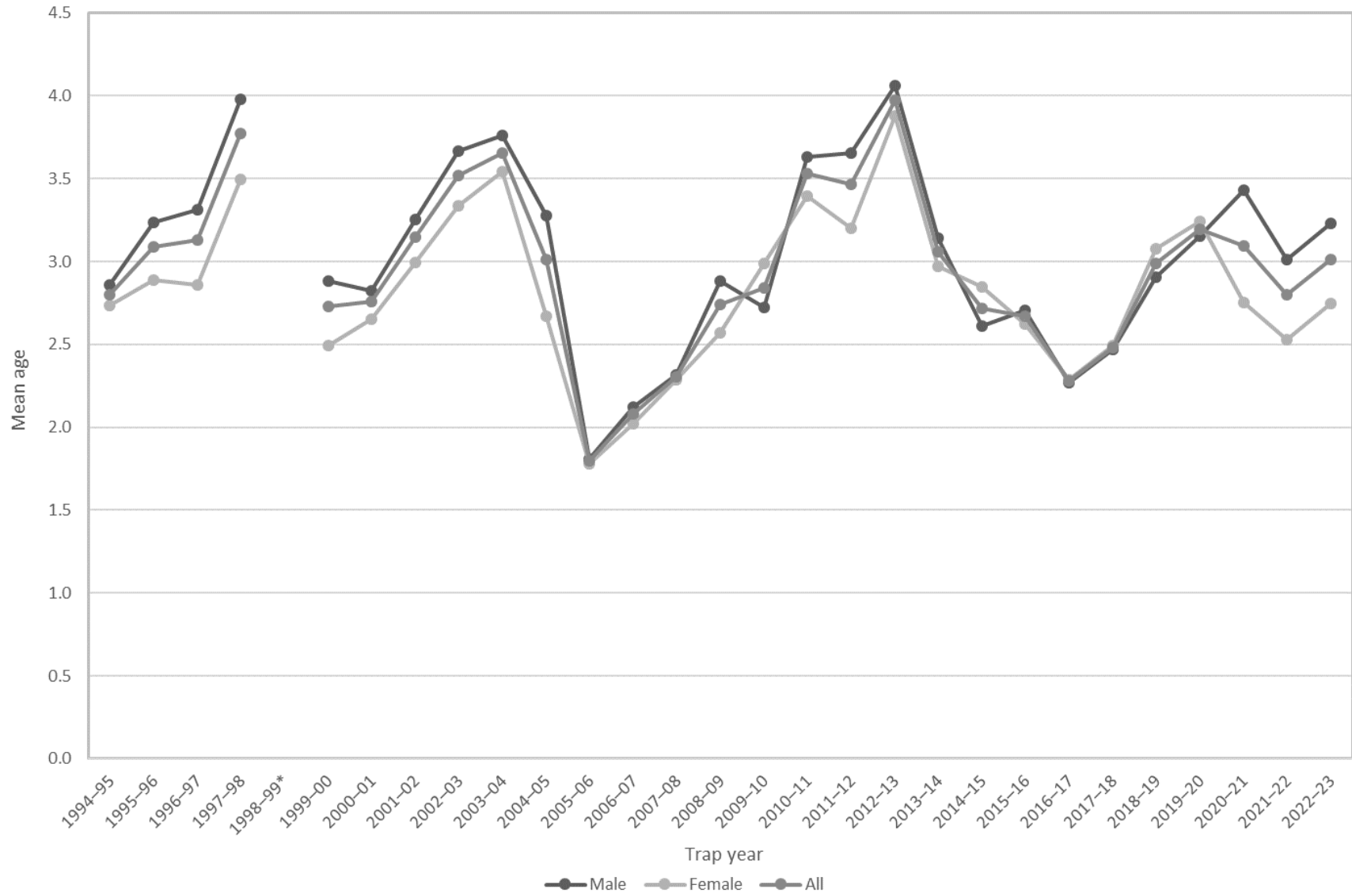
Trap year	Kittens / adult female	Kittens / adult	Male kittens / female kittens	Juveniles / adult	Juv. males / juv. females	Proportion juveniles in harvest	Proportion females in harvest	Males / females
1985–86	0.5	0.2	1.0	—	—	—	—	1.2
1986–87	0.7	0.3	0.9	—	—	—	—	1.1
1987–88	1.2	0.5	1.0	—	—	—	—	1.1
1988–89	1.1	0.4	1.1	—	—	—	—	1.3
1989–90	0.8	0.3	1.0	—	—	—	—	1.4
1990–91	0.8	0.3	0.6	—	—	—	—	1.2
1991–92	0.9	0.7	1.3	—	—	—	—	1.5
1992–93	0.9	1.0	1.2	—	—	—	—	1.4
1993–94	1.6	0.6	1.0	—	—	—	—	1.3
1994–95	0.6	0.6	1.1	0.6	1.1	0.36	0.44	1.3
1995–96	1.4	0.5	0.7	0.5	1.0	0.35	0.44	1.3
1996–97	1.9	0.7	1.1	0.7	1.1	0.41	0.41	1.4
1997–98	1.2	0.4	0.9	0.4	0.9	0.30	0.42	1.4
1998–99	2.1	0.8	1.1	—	—	—	—	1.3
1999–00	0.8	0.3	1.0	1.0	1.4	0.50	0.39	1.6
2000–01	0.7	0.3	1.1	0.9	1.3	0.47	0.39	1.6
2001–02	0.4	0.2	1.0	0.6	1.2	0.38	0.41	1.4
2002–03	0.4	0.2	0.9	0.4	1.0	0.28	0.45	1.2
2003–04	0.6	0.3	0.9	0.5	1.0	0.31	0.47	1.1
2004–05	0.8	0.3	0.8	1.2	1.1	0.55	0.44	1.3
2005–06	5.8	2.5	1.4	2.5	1.4	0.72	0.43	1.4
2006–07	4.1	1.5	1.4	1.5	1.4	0.60	0.43	1.3
2007–08	3.0	1.3	1.1	1.4	1.1	0.56	0.43	1.3
2008–09	0.4	0.2	0.8	0.7	1.0	0.42	0.45	1.2
2009–10	0.7	0.3	1.0	0.6	1.2	0.38	0.47	1.1
2010–11	0.6	0.2	1.1	0.5	1.2	0.31	0.43	1.4
2011–12	0.8	0.3	1.1	0.5	1.2	0.35	0.45	1.2
2012–13	0.6	0.3	0.9	0.5	0.9	0.35	0.48	1.1
2013–14	0.9	0.4	0.9	0.8	0.9	0.46	0.45	1.2
2014–15	1.6	0.8	1.0	1.5	1.2	0.60	0.45	1.2
2015–16	1.4	0.6	0.9	1.6	1.4	0.62	0.44	1.3
2016–17	1.4	0.6	0.9	1.8	1.3	0.64	0.41	1.5
2017–18	0.7	0.3	0.7	1.1	1.1	0.52	0.45	1.2
2018–19	0.2	0.1	0.9	0.6	1.2	0.36	0.48	1.1
2019–20	0.4	0.2	0.9	0.4	0.9	0.28	0.44	1.3
2020–21	1.0	0.4	0.5	0.7	0.7	0.42	0.46	1.2
2021–22	0.9	0.3	0.8	1.3	1.2	0.56	0.49	1.0
2022–23	1.0	0.4	1.2	0.7	1.1	0.42	0.46	1.2
Average	1.2	0.5	1.0	0.9	1.1	0.45	0.44	1.3

In annual reports prior to 2005–06, the "juvenile" age category referred only to kittens (age 0.5) while "adults" included all bobcats age 1.5 and older. Beginning with the 2005–06 annual report, the term "juvenile" now refers to kittens and yearlings (ages 0.5–1.5), while "adult" includes all bobcats age 2.5 and older.

Adult bobcat survival (from Chapman-Robson estimator), Utah 1985–2023.

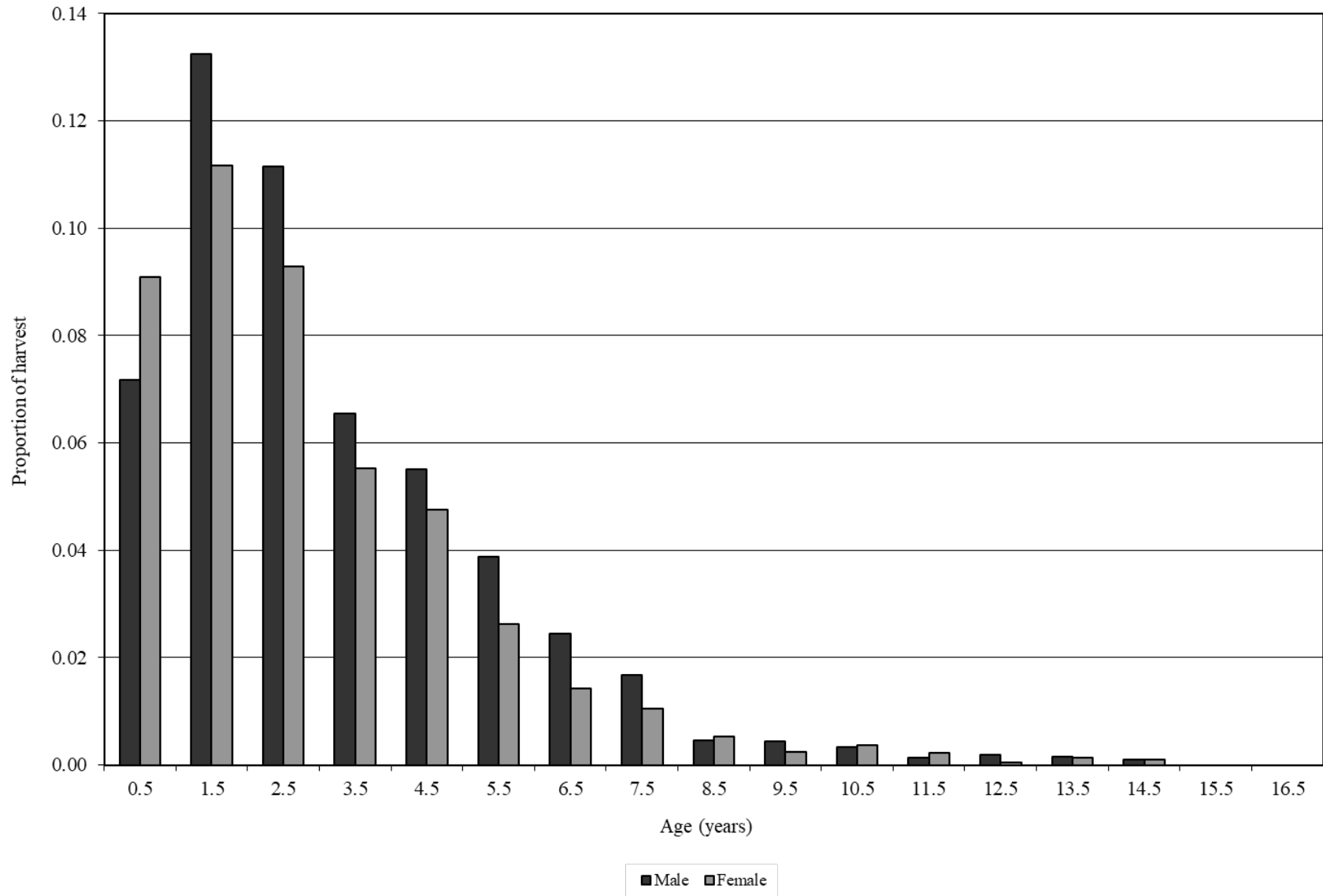
Trap year	Survival (%)	95% confidence interval	Chi-square value, degrees of freedom
1985–86	63	60–65	13.2, 9df
1986–87	63	60–65	34.1, 9df
1987–88	65	61–68	19.9, 9df
1988–89	64	60–68	17.3, 8df
1989–90	67	63–71	19.4, 8df
1990–91	58	53–62	28.5, 12df
1991–92	58	55–60	47.9, 14df
1992–93	59	56–63	19.9, 12df
1993–94	54	52–57	34.2, 11df
1994–95	57	54–59	17.2, 14df
1995–96	64	61–66	40.0, 11df
1996–97	68	65–70	23.4, 12df
1997–98	71	69–74	19.1, 14df
1998–99	71	70–73	35.2, 13df
1999–00	66	64–68	41.0, 15df
2000–01	64	62–66	86.0, 11df
2001–02	65	63–67	87.3, 14df
2002–03	67	65–68	175.5, 13df
2003–04	71	70–72	245.6, 12df
2004–05	74	73–76	83.9, 15df
2005–06	68	65–70	15.7, 12df
2006–07	53	48–58	41.9, 9df
2007–08	58	54–62	63.6, 12df
2008–09	57	54–61	64.5, 14df
2009–10	59	56–62	60.1, 12df
2010–11	69	66–71	90.0, 13df
2011–12	70	66–73	22.7, 13df
2012–13	75	72–78	87.2, 11df
2013–14	70	66–74	52.8, 12df
2014–15	74	71–77	62.2, 13df
2015–16	73	70–76	66.6, 13df
2016–17	65	61–68	93.1, 10df
2017–18	57	53–61	89.8, 11df
2018–19	59	55–63	42.8, 12df
2019–20	60	57–64	16.4, 11df
2020–21	68	65–72	52.9, 12df
2021–22	70	66–74	46.9, 7df
2022–23	67	63–71	41.9, 12df
Average	65	—	—

Average age of harvested bobcats, Utah 1994–2023.



*Excludes age structure data from the 1998–99 trap season.

5-yr age structure of harvested bobcats, Utah 2018–2023.



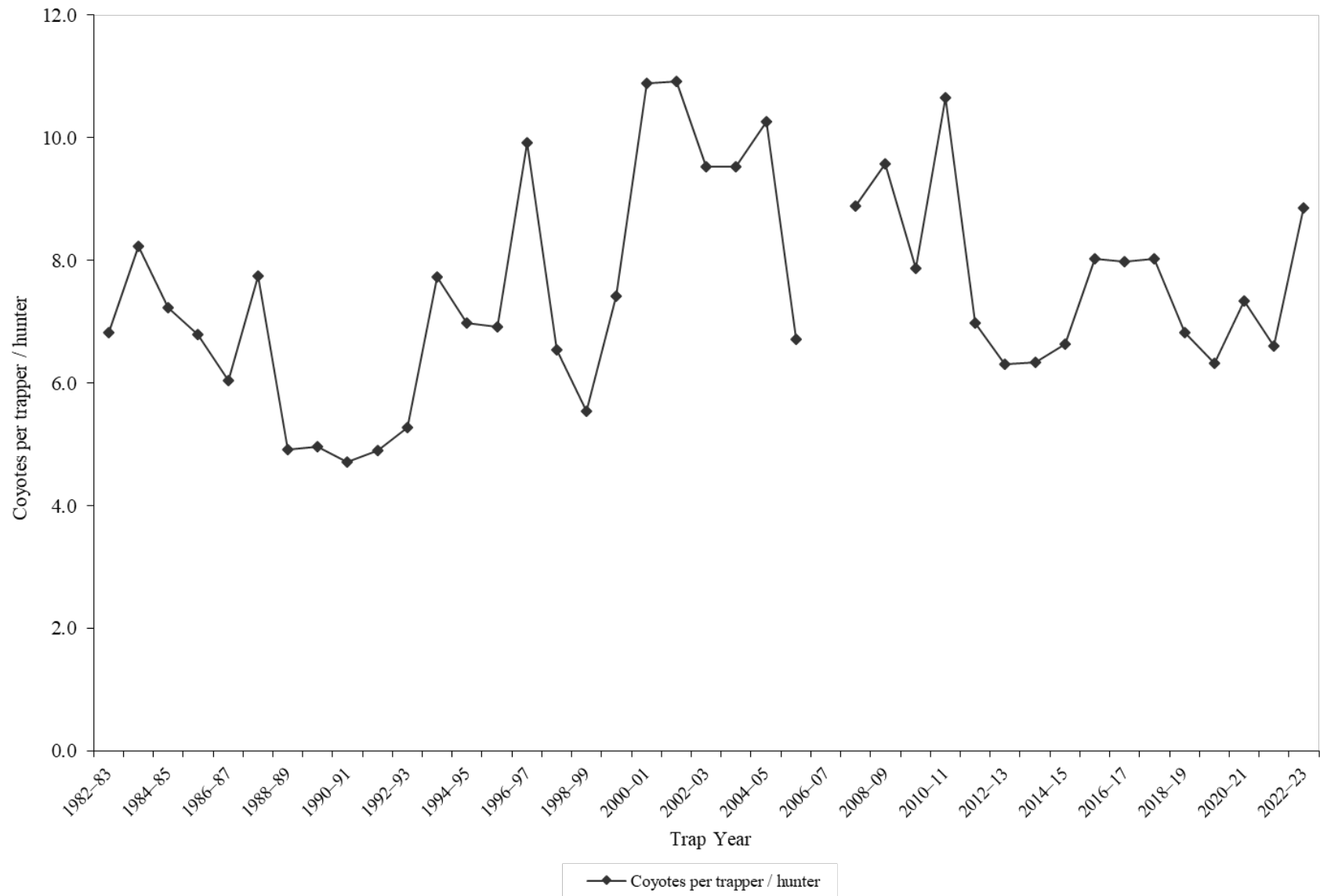
COYOTE

Statewide coyote harvest statistics, Utah 1982–2023.

Trap year	Trappers / hunters afield	Wildlife Services harvest	Incidental harvest	Trap harvest	Hunt harvest	Coyotes per trapper / hunter*	Pelt price (\$)
1982–83	841	4130	—	5738	—	6.8	35.42
1983–84	715	5063	—	5878	—	8.2	25.92
1984–85	828	5427	—	5991	—	7.2	32.35
1985–86	714	5045	—	4851	—	6.8	19.65
1986–87	819	4116	—	4947	—	6.0	33.64
1987–88	893	4338	—	6919	—	7.7	15.55
1988–89	652	4853	—	3200	—	4.9	8.47
1989–90	671	5168	—	3331	—	5.0	8.68
1990–91	389	4444	—	1831	—	4.7	11.41
1991–92	664	4347	—	3255	—	4.9	20.00
1992–93	695	4932	—	3666	—	5.3	15.75
1993–94	679	5827	—	5247	—	7.7	24.58
1994–95	754	3893	—	5267	—	7.0	12.51
1995–96	632	4165	—	4372	—	6.9	15.49
1996–97	405	4484	—	4017	—	9.9	18.73
1997–98	494	4169	—	3228	—	6.5	10.80
1998–99	782	3464	—	4337	—	5.5	10.80
1999–00	473	4534	—	3510	—	7.4	19.14
2000–01	456	4275	—	4966	—	10.9	14.39
2001–02	399	3874	—	4354	—	10.9	16.17
2002–03	572	3394	—	5446	—	9.5	32.62
2003–04	699	3897	—	6660	—	9.5	25.74
2004–05	699	4125	—	7173	—	10.3	20.10
2005–06	630	4820	328	1190	3039	6.7	30.45
2006–07	830	5041	—	—	—	—	26.37
2007–08	859	5618	821	4055	3582	8.9	21.74
2008–09	726	3909	1020	3963	2982	9.6	10.86
2009–10	781	3808	531	3188	2955	7.9	14.80
2010–11	736	4081	292	4356	3480	10.6	25.00
2011–12	705	3444	374	3054	1868	7.0	43.43
2012–13	881	3349	192	3269	2288	6.3	39.56
2013–14	864	2605	312	3162	2310	6.3	37.39
2014–15	971	3099	424	4118	2331	6.6	45.88
2015–16	977	3961	166	4801	3034	8.0	29.63
2016–17	607	3473	285	2244	2595	8.0	37.26
2017–18	635	3024	164	2584	2511	8.0	37.31
2018–19	493	3911	226	1728	1636	6.8	56.31
2019–20	531	3839	126	1793	1565	6.3	76.66
2020–21	828	3871	270	3076	3004	7.3	—
2021–22	512	3177	393	1949	1432	6.6	26.57
2022–23	481	3852	262	2201	2054	8.8	11.97
Average	682	4167	364	3973	2510	7.5	25.48

*Coyotes per trapper / hunter does not include Wildlife Services harvest.

Statewide coyote harvest trends, Utah 1982–2023.



Coyote trapping harvest statistics by county and ecoregion, Utah 2022–23.

County	n	Trappers afield	Trap harvest	Traps Set	Trapping days	Set-days	Set-days / coyote	Coyotes / 1000 set-days	Coyotes / trapper
Beaver	3	10	20	222	707	15949	790	1.3	2.0
Box Elder	5	17	215	273	491	5841	27	36.9	12.8
Iron	5	17	10	141	145	1979	196	5.1	0.6
Juab	7	24	124	162	495	3688	30	33.8	5.3
Millard	5	17	61	145	1026	8255	136	7.3	3.6
Tooele	10	34	818	1380	1363	45930	56	17.8	24.3
Great Basin totals	35	118	1248	2322	4226	81642	65	15.3	10.6
Cache	2	7	34	104	286	5552	165	6.1	5.0
Davis	1	3	3	7	101	202	60	16.7	1.0
Morgan	4	13	40	91	441	1020	25	39.6	3.0
Piute	0	0	—	—	—	—	—	—	—
Rich	2	7	74	269	505	26246	355	2.8	11.0
Salt Lake	0	0	—	—	—	—	—	—	—
Sanpete	3	10	91	700	444	31232	344	2.9	9.0
Sevier	12	40	178	575	1827	30513	171	5.8	4.4
Summit	1	3	0	10	47	141	—	0.0	0.0
Utah	9	30	61	411	2228	50677	837	1.2	2.0
Wasatch	3	10	13	74	242	1814	135	7.4	1.3
Weber	1	3	13	0	185	0	0	—	4.0
Rocky Mountain totals	38	128	507	2240	6306	147397	290	3.4	4.0
Daggett	1	3	3	27	135	1077	320	3.1	1.0
Duchesne	9	30	30	239	1191	10367	342	2.9	1.0
Uintah	9	30	87	384	1120	14156	162	6.2	2.9
Uintah Basin totals	19	64	120	649	2446	25600	211	4.7	1.9
Carbon	3	10	3	74	384	5451	1620	0.6	0.3
Emery	1	3	27	40	188	2261	84	11.9	8.0
Garfield	5	17	27	30	458	2162	80	12.4	1.6
Grand	1	3	0	10	101	303	—	0.0	0.0
Kane	4	13	87	377	683	43644	499	2.0	6.5
San Juan	3	10	50	71	207	6057	120	8.3	5.0
Washington	6	20	77	229	774	12012	155	6.4	3.8
Wayne	0	0	—	—	—	—	—	—	—
Colorado Plateau totals	23	77	271	831	2794	71891	264	3.8	3.5
Unknown	2	7	50	81	74	3392	67	14.9	7.5
Statewide totals*	95	320	2201	6123	15847	329922	150	6.7	6.9

*Statewide totals for sample size and trappers afield are not totals of the columns because trappers trapped multiple counties.

Coyote hunting harvest statistics by county and ecoregion, Utah 2022–23.

County	n	Hunters afield	Hunt harvest	Hunter-days afield	Hunter-days / coyote	Coyotes / hunter
Beaver	4	13	13	239	17.8	1.0
Box Elder	10	34	252	448	1.8	7.5
Iron	3	10	34	283	8.4	3.3
Juab	8	27	101	192	1.9	3.8
Millard	5	17	114	723	6.3	6.8
Tooele	11	37	380	1107	2.9	10.3
Great Basin totals	41	138	895	2991	3.3	6.5
Cache	8	27	145	505	3.5	5.4
Davis	1	3	0	47	—	0.0
Morgan	1	3	0	17	—	0.0
Piute	0	0	—	—	—	—
Rich	6	20	259	468	1.8	12.8
Salt Lake	0	0	—	—	—	—
Sanpete	1	3	37	151	4.1	11.0
Sevier	7	24	91	202	2.2	3.9
Summit	2	7	0	81	—	0.0
Utah	3	10	47	54	1.1	4.7
Wasatch	1	3	0	3	—	0.0
Weber	0	0	—	—	—	—
Rocky Mountain totals	30	101	579	1528	2.6	5.7
Daggett	1	3	34	34	1.0	10.0
Duchesne	5	17	30	219	7.2	1.8
Uintah	5	17	0	286	—	0.0
Uintah Basin totals	11	37	64	538	8.4	1.7
Carbon	4	13	24	124	5.3	1.8
Emery	3	10	3	77	23.0	0.3
Garfield	8	27	119	736	6.2	4.4
Grand	5	17	77	471	6.1	4.6
Kane	3	10	13	572	42.5	1.3
San Juan	4	13	81	279	3.5	6.0
Washington	5	17	135	518	3.9	8.0
Wayne	5	17	24	98	4.1	1.4
Colorado Plateau totals	37	124	476	2876	6.0	3.8
Unknown	2	7	40	57	1.4	6.0
Statewide totals*	71	239	2054	7990	3.9	8.6

*Statewide totals for sample size and hunters afield are not totals of the columns because hunters hunted multiple counties.

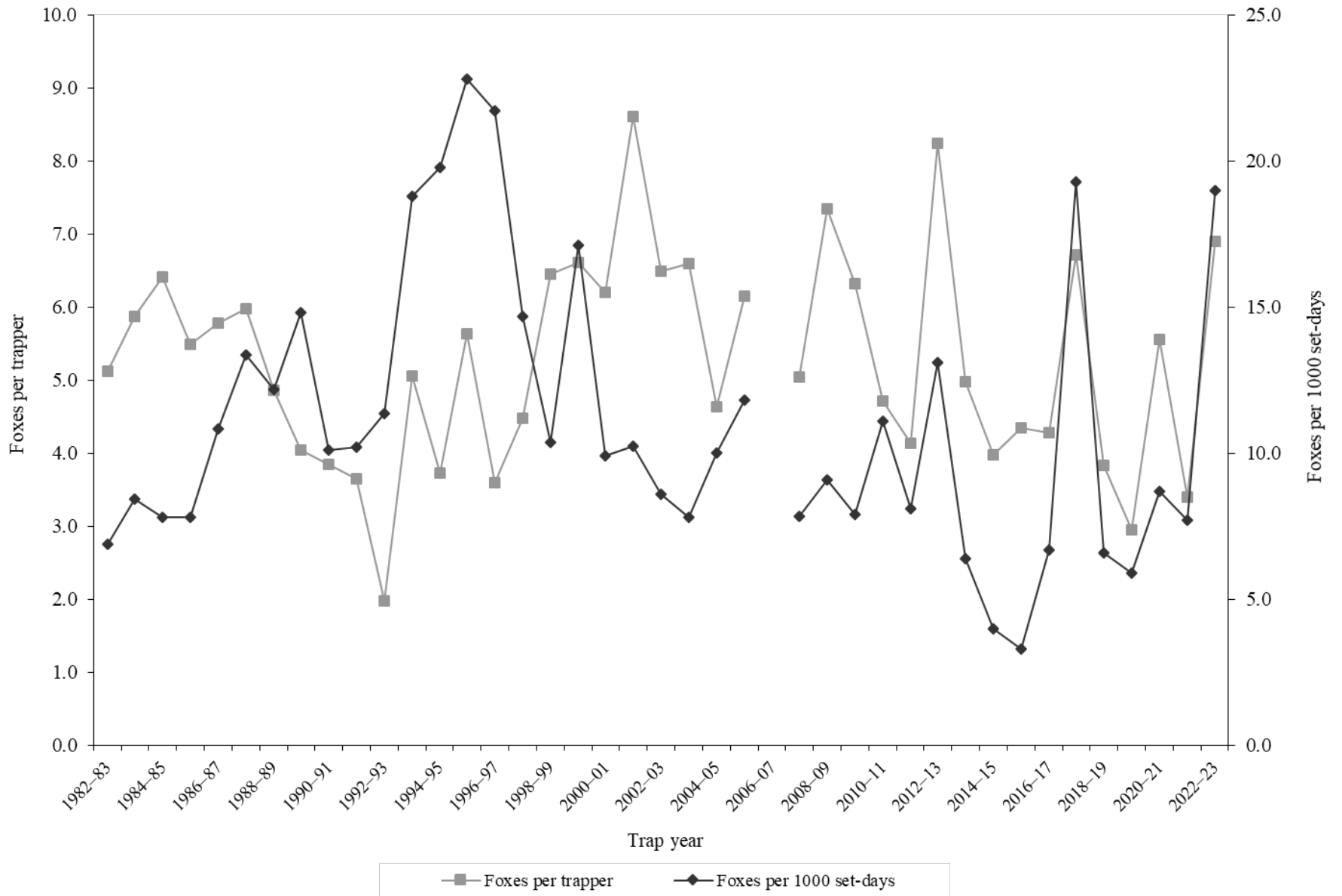
GRAY FOX

Statewide gray fox harvest statistics*, Utah 1982–2023.

Trap year	Trappers afield	Incidental harvest	Trap harvest	Hunt harvest	Set-days / fox	Foxes / 1000 set-days	Foxes / trapper	Pelt price (\$)
1982–83	263	—	1346	—	145	6.9	5.1	27.75
1983–84	233	—	1367	—	119	8.4	5.9	25.13
1984–85	305	—	1954	—	128	7.8	6.4	24.64
1985–86	256	—	1407	—	128	7.8	5.5	15.03
1986–87	252	—	1457	—	92	10.8	5.8	25.29
1987–88	273	—	1633	—	75	13.4	6.0	21.91
1988–89	226	—	1099	—	82	12.2	4.9	13.50
1989–90	233	—	941	—	68	14.8	4.0	6.19
1990–91	65	—	250	—	99	10.1	3.8	8.24
1991–92	110	—	402	—	98	10.2	3.7	6.87
1992–93	214	—	422	—	88	11.4	2.0	7.08
1993–94	136	—	687	—	53	18.8	5.1	12.00
1994–95	207	—	771	—	51	19.8	3.7	9.62
1995–96	147	—	828	—	44	22.8	5.6	10.65
1996–97	102	—	367	—	46	21.7	3.6	11.60
1997–98	87	—	389	—	68	14.7	4.5	7.76
1998–99	135	—	870	—	96	10.4	6.4	6.96
1999–00	140	—	925	—	58	17.1	6.6	6.62
2000–01	187	—	1159	—	101	9.9	6.2	8.00
2001–02	154	—	1326	—	98	10.2	8.6	11.58
2002–03	299	—	1942	—	116	8.6	6.5	12.47
2003–04	265	—	1749	—	128	7.8	6.6	10.84
2004–05	203	—	942	—	100	10.0	4.6	13.81
2005–06	98	—	603	—	85	11.8	6.2	24.15
2006–07	252	—	—	—	—	—	—	37.25
2007–08	217	—	1093	—	127	7.9	5.0	39.19
2008–09	238	—	1747	—	110	9.1	7.3	17.07
2009–10	163	361	1031	—	126	7.9	6.3	16.56
2010–11	138	292	651	—	90	11.1	4.7	20.97
2011–12	125	485	474	43	124	8.1	4.1	23.13
2012–13	130	216	1069	3	77	13.1	8.2	31.15
2013–14	172	462	843	13	155	6.4	5.0	24.18
2014–15	123	525	490	0	249	4.0	4.0	16.16
2015–16	151	450	623	33	299	3.3	4.3	10.75
2016–17	84	267	356	3	150	6.7	4.3	15.42
2017–18	101	389	664	14	52	19.3	6.7	8.98
2018–19	89	328	330	11	151	6.6	3.8	12.36
2019–20	56	264	163	2	171	5.9	2.9	16.22
2020–21	65	394	358	3	115	8.7	5.6	—
2021–22	57	296	186	12	130	7.7	3.4	15.27
2022–23	50	256	347	0	53	19.0	6.9	15.02
Average	166	356	882	11	109	11.1	5.2	16.18

*Trappers and foxes per trapper include hunters and their harvest. Set-days per fox and foxes per 1000 set-days are based only on trapping activity, and do not include hunt harvest or hunter-days afield.

Statewide gray fox harvest trends, Utah 1982–2023.



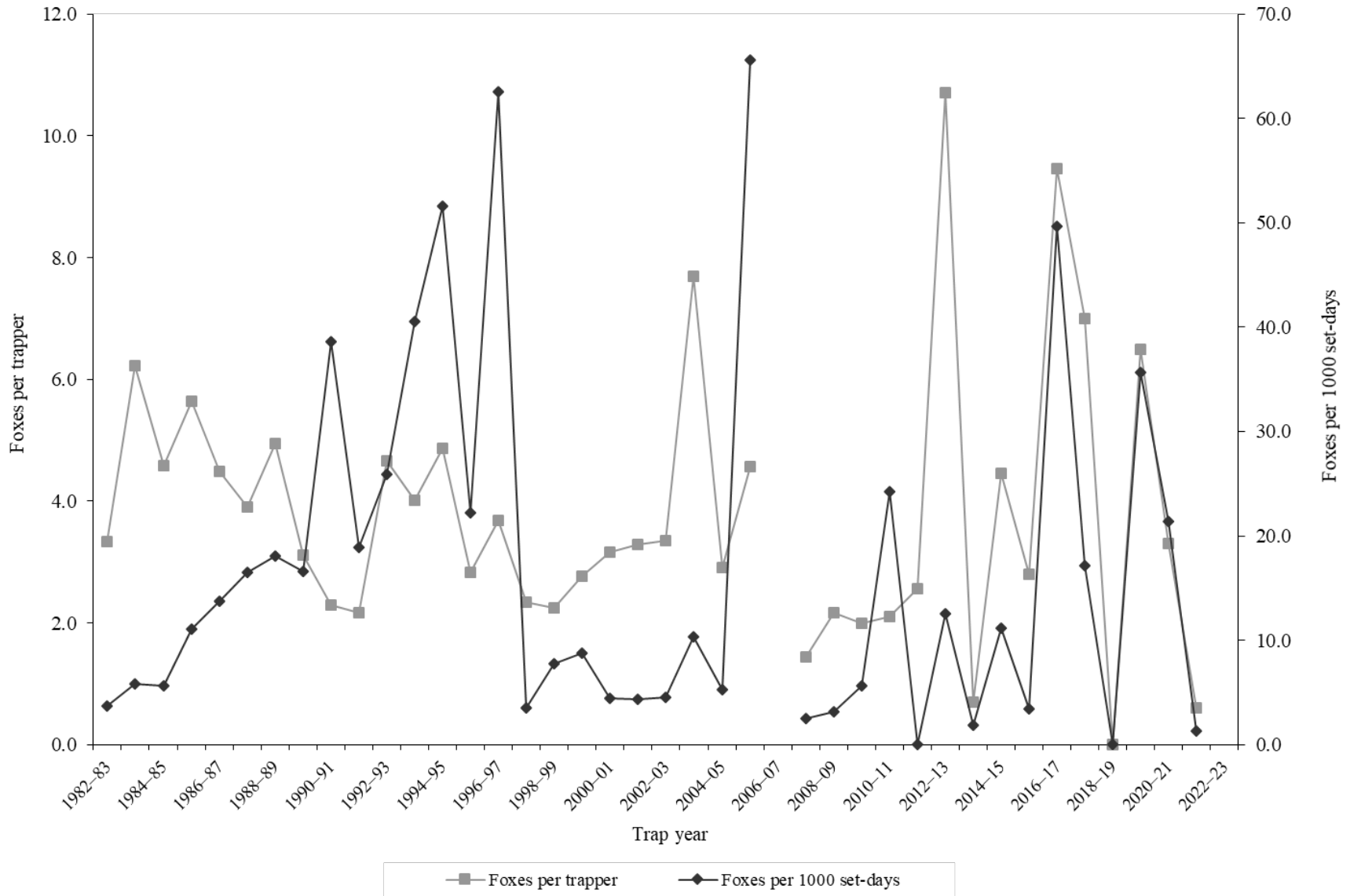
KIT FOX

Statewide kit fox harvest statistics*, Utah 1982–2023.

Trap year	Trappers afield	Incidental harvest	Trap harvest	Hunt harvest	Set-days / fox	Foxes / 1000 set-days	Foxes / trapper	Pelt price (\$)
1982–83	109	—	363	—	267	3.7	3.3	11.39
1983–84	112	—	698	—	171	5.8	6.2	11.99
1984–85	142	—	651	—	178	5.6	4.6	11.17
1985–86	108	—	609	—	90	11.1	5.6	7.50
1986–87	122	—	547	—	73	13.7	4.5	9.90
1987–88	138	—	538	—	61	16.5	3.9	10.69
1988–89	130	—	643	—	55	18.1	4.9	6.98
1989–90	117	—	365	—	60	16.6	3.1	3.19
1990–91	81	—	186	—	26	38.6	2.3	4.67
1991–92	86	—	187	—	53	18.9	2.2	2.78
1992–93	41	—	191	—	39	25.9	4.7	4.30
1993–94	75	—	301	—	25	40.6	4.0	4.69
1994–95	109	—	531	—	19	51.6	4.9	6.45
1995–96	77	—	218	—	45	22.2	2.8	6.25
1996–97	44	—	162	—	16	62.5	3.7	6.77
1997–98	41	—	96	—	282	3.5	2.3	3.50
1998–99	75	—	168	—	128	7.8	2.2	7.31
1999–00	66	—	183	—	114	8.8	2.8	2.90
2000–01	51	—	161	—	227	4.4	3.2	6.13
2001–02	52	—	171	—	229	4.4	3.3	10.72
2002–03	90	—	302	—	221	4.5	3.4	5.44
2003–04	83	—	638	—	97	10.4	7.7	5.38
2004–05	89	—	259	—	191	5.2	2.9	8.98
2005–06	40	—	183	—	15	65.6	4.6	10.92
2006–07	65	—	—	—	—	—	—	10.50
2007–08	27	—	39	—	392	2.6	1.4	7.87
2008–09	48	—	104	—	314	3.2	2.2	7.61
2009–10	19	13	38	—	177	5.6	2.0	9.47
2010–11	20	3	42	—	41	24.2	2.1	12.68
2011–12	18	64	0	46	—	0.0	2.6	14.49
2012–13	31	41	315	17	80	12.6	10.7	14.37
2013–14	10	7	7	0	515	1.9	0.7	14.32
2014–15	22	47	95	3	90	11.2	4.5	7.13
2015–16	29	18	37	44	296	3.4	2.8	6.54
2016–17	13	31	123	0	20	49.7	9.5	10.32
2017–18	2	30	14	0	58	17.2	7.0	6.60
2018–19	7	13	0	0	—	0.0	0.0	8.91
2019–20	12	25	74	4	28	35.7	6.5	15.15
2020–21	3	52	10	0	47	21.4	3.3	—
2021–22	17	7	7	7	792	1.3	0.6	—
2022–23	3	24	0	7	—	—	—	12.22
Average	59	27	231	11	149	16.8	3.8	8.41

*Trappers and foxes per trapper include hunters and their harvest. Set-days per fox and foxes per 1000 set-days are based only on trapping activity, and do not include hunt harvest or hunter-days afield.

Statewide kit fox harvest trends, Utah 1982–2023.



MARTEN

Statewide marten harvest statistics, Utah 1982–1999.

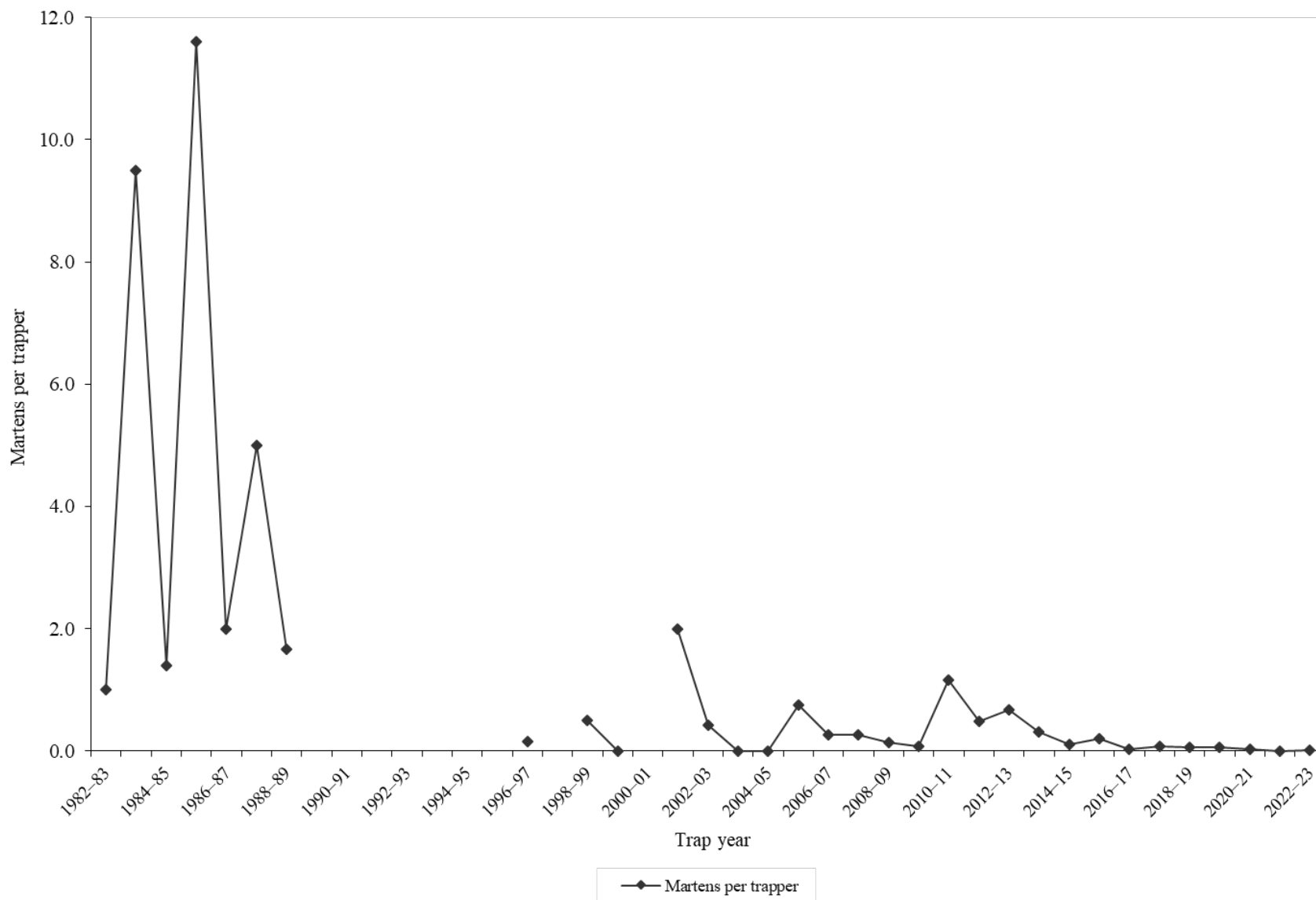
Trap year	Trappers afield	Trap / hunt harvest	Set-days	Set-days / marten	Martens / 1000 set-days	Martens / trapper	Pelt price (\$)
1982–83	1	1	6	6	166.7	1.0	10.00
1983–84	9	84	4704	56	17.9	9.5	20.00
1984–85	9	12	6516	543	1.8	1.4	24.00
1985–86	10	121	7381	61	16.4	11.6	23.00
1986–87	11	22	8558	389	2.6	2.0	25.68
1987–88	10	50	9750	195	5.1	5.0	40.00
1988–89	6	10	1210	121	8.3	1.7	31.00
1989–90	—	—	—	—	—	—	—
1990–91	—	—	—	—	—	—	—
1991–92	—	—	—	—	—	—	—
1992–93	—	—	—	—	—	—	—
1993–94	—	—	—	—	—	—	—
1994–95	—	—	—	—	—	—	—
1995–96	—	—	—	—	—	—	—
1996–97	13	2	—	—	—	0.2	20.00
1997–98	—	—	—	—	—	—	11.00
1998–99	12	6	1228	205	4.9	0.5	7.11
Average	9	34	4919	197	28.0	3.6	21.18

Statewide marten harvest statistics, Utah 1999–2023.

Trap year	Permits sold	Successful trappers	Male harvest	Female harvest	Unknown harvest	Total harvest	Success rate (%)*	Martens / trapper*
1999–00	5	0	0	0	0	0	0.0	0.0
2000–01	—	1	3	3	0	6	—	—
2001–02	11	2	16	6	0	22	18.2	2.0
2002–03	12	1	3	2	0	5	8.3	0.4
2003–04	18	0	0	0	0	0	0.0	0.0
2004–05	12	0	0	0	0	0	0.0	0.0
2005–06	16	2	7	4	1	12	12.5	0.8
2006–07	26	3	6	1	0	7	11.5	0.3
2007–08	22	4	7	14	0	21	18.2	1.0
2008–09	28	1	2	2	0	4	3.6	0.1
2009–10	25	1	2	0	0	2	4.0	0.1
2010–11	31	2	24	12	0	36	6.5	1.2
2011–12	29	3	7	3	4	14	10.3	0.5
2012–13	39	3	15	5	6	26	7.7	0.7
2013–14	51	6	13	3	0	16	11.8	0.3
2014–15	202	2	16	6	0	22	1.0	0.1
2015–16	46	1	5	4	0	9	2.2	0.2
2016–17	89	2	2	0	0	2	2.2	0.0
2017–18	184	3	11	4	0	15	1.6	0.1
2018–19	188	1	9	2	0	11	0.5	0.1
2019–20	152	1	4	4	0	8	0.7	0.1
2020–21	179	2	3	1	0	4	1.1	0.0
2021–22	152	0	0	0	0	0	0.0	0.0
2022–23	128	1	0	1	0	1	0.8	0.0
Average	72	2	7	3	0	10	5.3	0.3

*Assumption: Every person who possessed a marten permit trapped or hunted.

Statewide marten harvest trends, Utah 1982–2023.



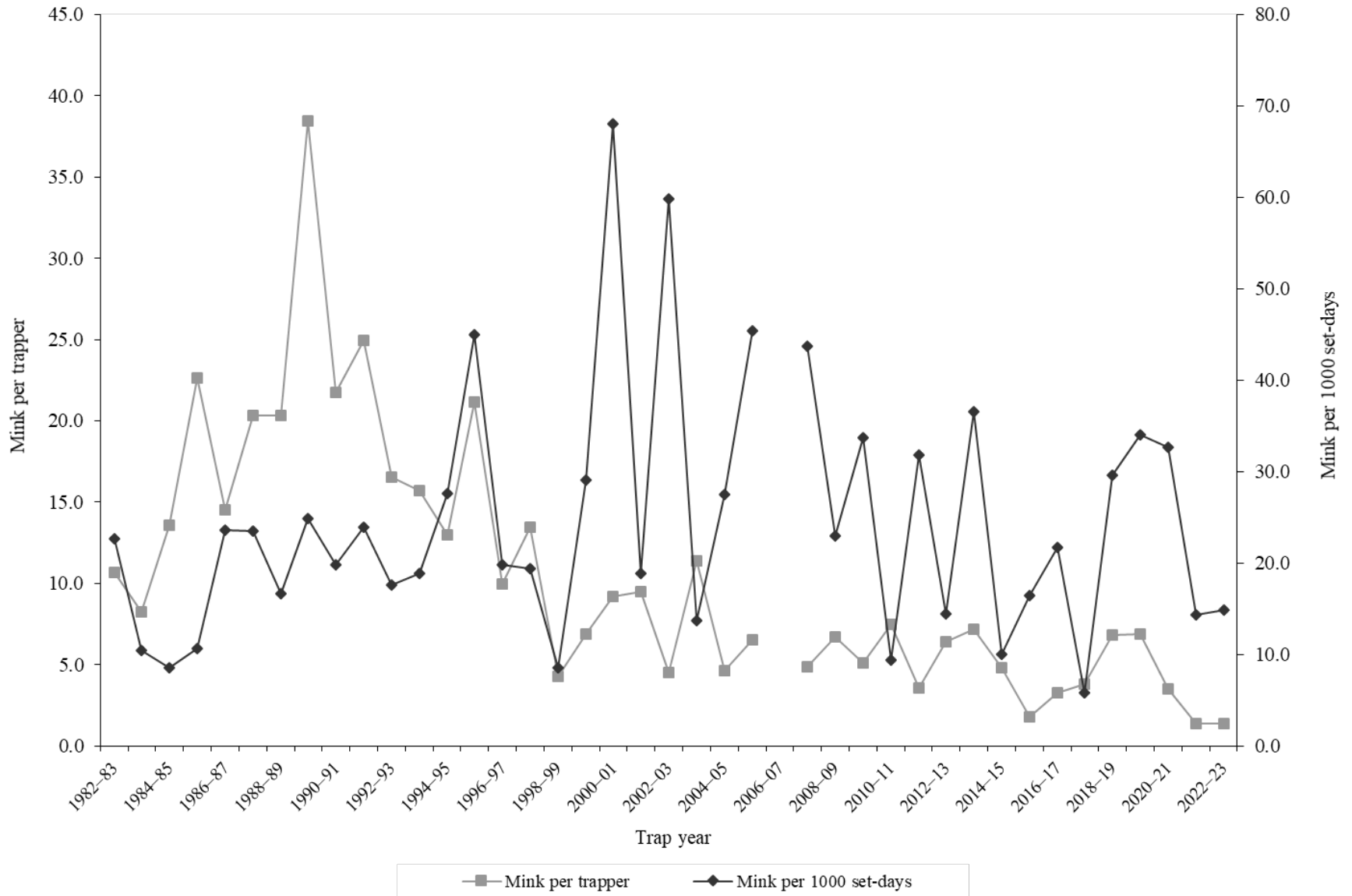
MINK

Statewide mink harvest statistics*, Utah 1982–2023.

Trap year	Trappers afield	Incidental harvest	Trap harvest	Hunt harvest	Set-days / mink	Minks / 1000 set-days	Minks / trapper	Pelt price (\$)
1982–83	38	—	405	—	44	22.7	10.7	10.85
1983–84	46	—	379	—	95	10.5	8.2	9.13
1984–85	40	—	542	—	117	8.6	13.6	10.27
1985–86	37	—	837	—	94	10.7	22.6	6.00
1986–87	57	—	828	—	42	23.6	14.5	10.63
1987–88	51	—	1037	—	42	23.6	20.3	12.25
1988–89	42	—	854	—	60	16.6	20.3	10.69
1989–90	29	—	1114	—	40	24.8	38.4	6.30
1990–91	25	—	543	—	50	19.8	21.7	6.33
1991–92	29	—	723	—	42	23.9	24.9	6.81
1992–93	23	—	380	—	57	17.6	16.5	7.50
1993–94	30	—	472	—	53	18.9	15.7	8.41
1994–95	27	—	350	—	36	27.6	13.0	8.38
1995–96	25	—	529	—	22	45.0	21.2	10.40
1996–97	27	—	269	—	50	19.8	10.0	10.95
1997–98	25	—	337	—	51	19.4	13.5	5.81
1998–99	81	—	345	—	116	8.6	4.3	7.11
1999–00	61	—	419	—	34	29.1	6.9	6.07
2000–01	51	—	468	—	15	68.1	9.2	4.92
2001–02	30	—	284	—	53	18.8	9.5	5.20
2002–03	59	—	268	—	17	59.8	4.5	2.07
2003–04	59	—	673	—	73	13.7	11.4	8.00
2004–05	68	—	317	—	36	27.5	4.7	8.98
2005–06	34	—	222	—	22	45.4	6.5	9.97
2006–07	65	—	—	—	—	—	—	7.94
2007–08	38	—	186	—	23	43.7	4.9	9.33
2008–09	36	—	242	—	44	22.9	6.7	5.96
2009–10	66	57	338	—	30	33.7	5.1	8.00
2010–11	65	151	485	—	107	9.4	7.5	11.27
2011–12	43	61	153	7	31	31.8	3.6	15.08
2012–13	110	147	706	14	70	14.4	6.4	19.18
2013–14	115	186	826	0	27	36.6	7.2	16.21
2014–15	54	82	259	0	100	10.0	4.8	8.57
2015–16	74	55	133	0	61	16.4	1.8	4.22
2016–17	60	29	196	21	46	21.7	3.3	7.52
2017–18	59	47	225	0	173	5.8	3.8	3.00
2018–19	33	20	219	7	34	29.6	6.8	2.00
2019–20	47	37	324	0	29	34.0	6.9	0.94
2020–21	26	36	91	0	31	32.7	3.5	—
2021–22	25	89	32	0	70	14.3	1.4	2.00
2022–23	24	10	34	0	67	14.9	1.4	1.00
Average	47	72	426	4	55	24.4	10.4	7.88

*Trappers and minks per trapper include hunters and their harvest. Set-days per mink and minks per 1000 set-days are based only on trapping activity, and do not include hunt harvest or hunter-days afield.

Statewide mink harvest trends, Utah 1982–2023.



*Statewide totals for sample size and trappers afield are not totals of the columns because trappers trapped multiple counties.

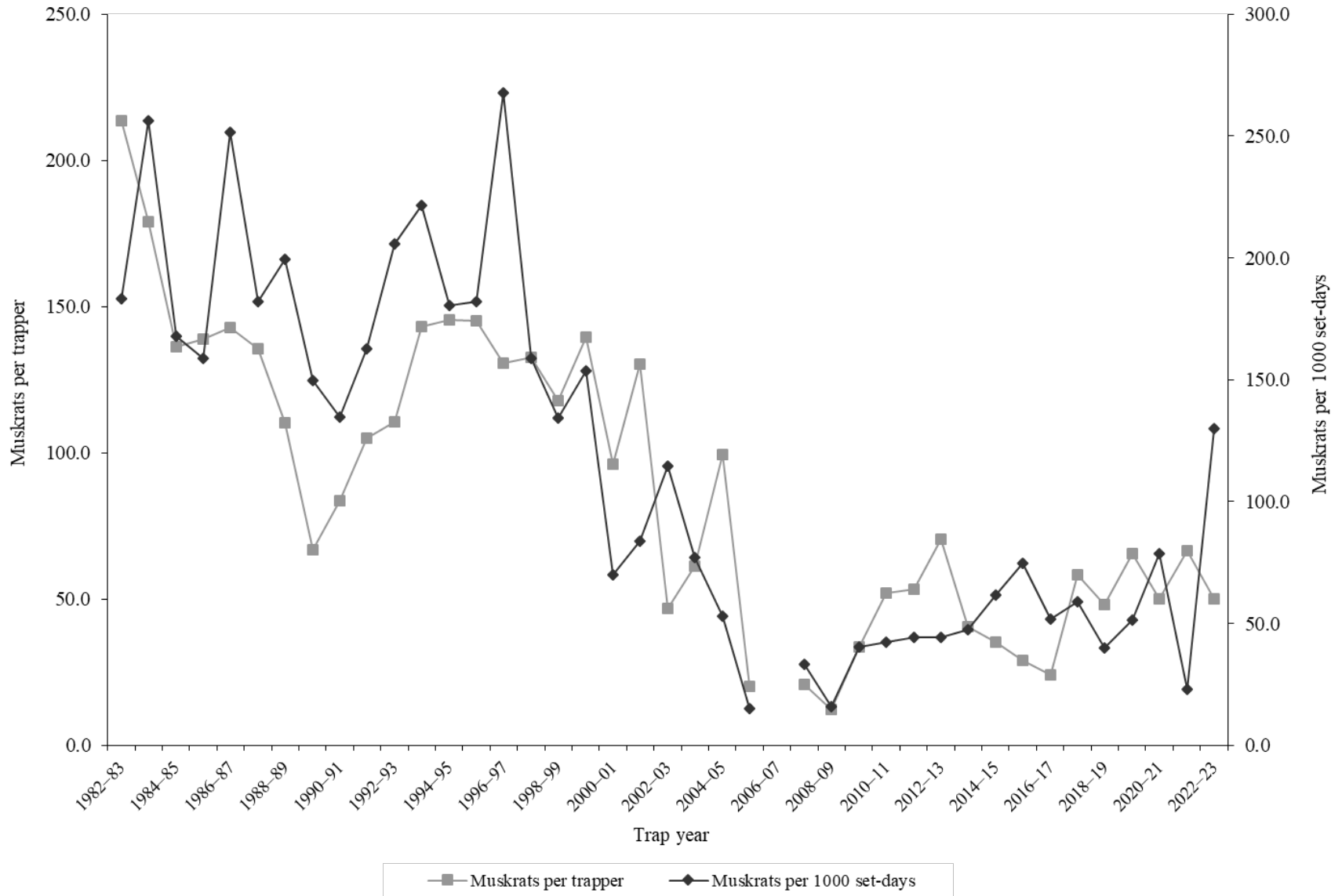
MUSKRAT

Statewide muskrat harvest statistics*, Utah 1982–2023.

Trap year	Trappers afield	Incidental harvest	Trap harvest	Hunt harvest	Set-days / muskrat	Musk rats / 1000 set-days	Musk rats / trapper	Pelt price (\$)
1982–83	258	—	55137	—	5	183.1	213.7	2.16
1983–84	309	—	55298	—	4	256.2	179.0	2.46
1984–85	400	—	54526	—	6	168.1	136.3	2.45
1985–86	282	—	39195	—	6	158.9	139.0	1.86
1986–87	416	—	59368	—	4	251.7	142.7	2.66
1987–88	432	—	58560	—	5	182.2	135.6	2.46
1988–89	303	—	33400	—	5	199.4	110.2	1.40
1989–90	253	—	16898	—	7	149.6	66.8	0.89
1990–91	85	—	7102	—	7	134.6	83.6	0.91
1991–92	186	—	19547	—	6	162.7	105.1	1.60
1992–93	105	—	11623	—	5	205.9	110.7	1.18
1993–94	157	—	22488	—	5	221.5	143.2	1.89
1994–95	195	—	28369	—	6	180.5	145.5	1.74
1995–96	181	—	26260	—	5	182.2	145.1	2.09
1996–97	179	—	23371	—	4	267.9	130.6	3.59
1997–98	203	—	26907	—	6	158.7	132.5	2.01
1998–99	186	—	21895	—	7	134.1	117.7	1.73
1999–00	151	—	21086	—	7	153.7	139.6	1.00
2000–01	108	—	10376	—	14	69.8	96.1	1.58
2001–02	115	—	14979	—	12	84.0	130.3	2.60
2002–03	135	—	6334	—	9	114.6	46.9	1.59
2003–04	176	—	10777	—	13	77.0	61.2	1.57
2004–05	151	—	15016	—	19	53.1	99.4	1.57
2005–06	41	0	824	—	66	15.3	20.1	3.97
2006–07	81	—	—	—	—	—	—	3.31
2007–08	80	110	1665	—	30	33.3	20.9	3.04
2008–09	98	137	1198	—	63	15.9	12.2	2.49
2009–10	158	164	5341	—	25	40.5	33.8	4.93
2010–11	141	337	7361	—	24	42.2	52.2	5.40
2011–12	150	281	7985	—	23	44.4	53.2	7.28
2012–13	192	117	13534	3	23	44.2	70.5	8.11
2013–14	213	159	8605	0	21	47.5	40.4	8.73
2014–15	168	180	5902	9	16	61.8	35.1	3.76
2015–16	210	41	6130	4	13	74.9	29.2	1.89
2016–17	128	92	3069	3	19	51.8	24.0	3.78
2017–18	122	110	7131	24	17	58.8	58.5	2.91
2018–19	72	24	3465	2	25	39.9	48.2	3.15
2019–20	74	153	4837	2	19	51.5	65.4	3.26
2020–21	98	65	4897	0	13	78.5	50.0	—
2021–22	85	333	5449	5	44	22.9	66.4	3.07
2022–23	61	162	2692	34	8	129.9	50.0	2.84
Average	174	145	18215	8	15	115.1	88.5	2.87

*Trappers and muskrat per trapper include hunters and their harvest. Set-days per muskrat and muskrat per 1000 set-days are based only on trapping activity, and do not include hunt harvest or hunter-days afield.

Statewide muskrat harvest trends, Utah 1982–2023.



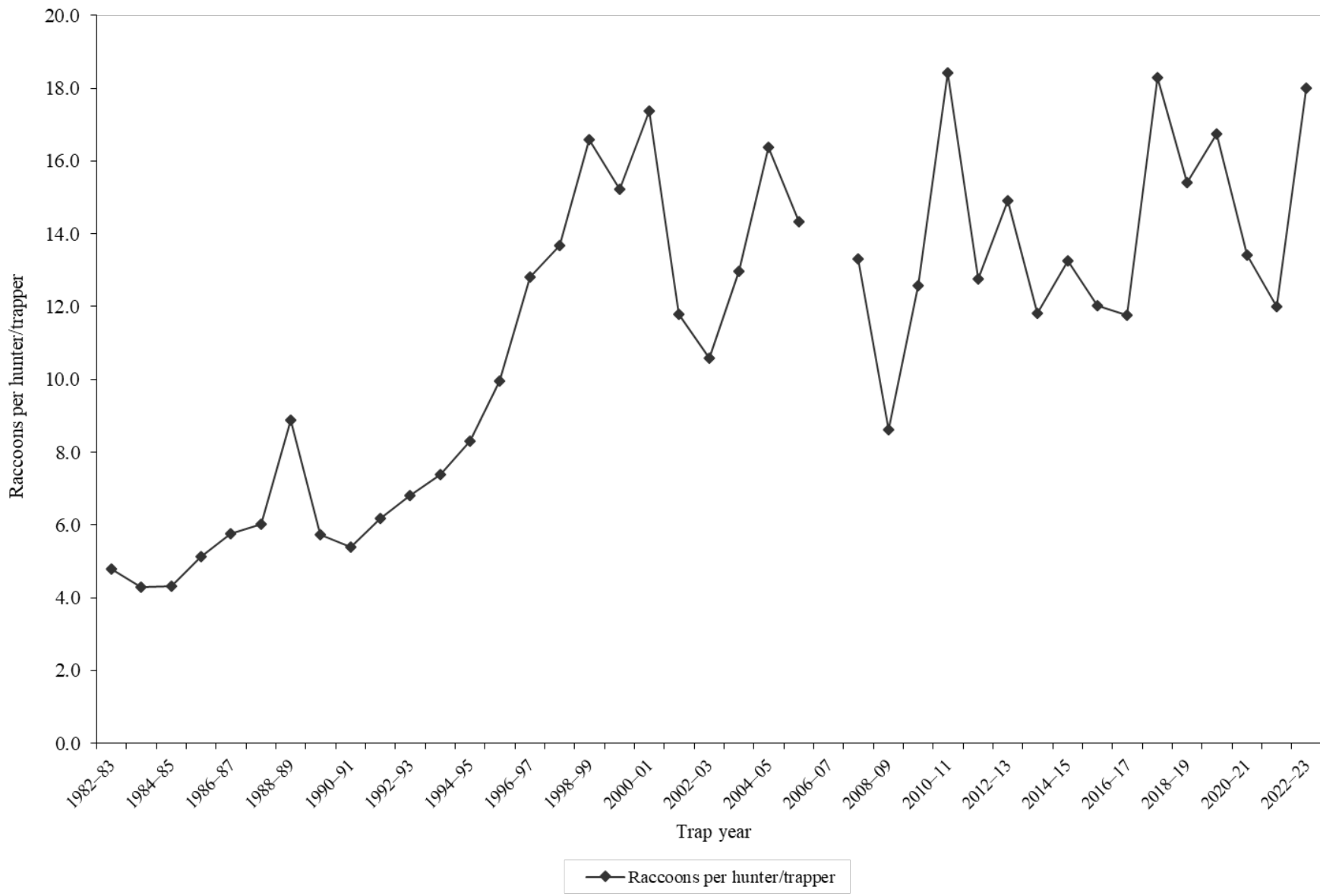
RACCOON

Statewide raccoon harvest statistics*, Utah 1982–2023.

Trap year	Trappers afield	Incidental harvest	Trap harvest	Hunt harvest	Set-days / raccoon	Raccoons / 1000 set-days	Raccoons / trapper	Pelt price (\$)
1982–83	178	—	853	—	19	51.3	4.8	12.34
1983–84	192	—	822	—	40	25.0	4.3	13.51
1984–85	329	—	1417	—	47	21.2	4.3	12.85
1985–86	290	—	1485	—	49	20.5	5.1	9.26
1986–87	418	—	2412	—	39	25.5	5.8	12.62
1987–88	434	—	2619	—	41	24.3	6.0	9.41
1988–89	350	—	3104	—	14	71.9	8.9	7.71
1989–90	430	—	2464	—	17	58.8	5.7	5.78
1990–91	214	—	1156	—	18	54.3	5.4	4.65
1991–92	368	—	2273	—	20	50.3	6.2	4.72
1992–93	272	—	1851	—	17	59.5	6.8	2.57
1993–94	306	—	2259	—	19	53.4	7.4	6.98
1994–95	364	—	3025	—	23	43.8	8.3	6.06
1995–96	293	—	2914	—	10	100.1	9.9	8.07
1996–97	330	—	4228	—	13	77.2	12.8	13.35
1997–98	365	—	4989	—	29	34.5	13.7	9.98
1998–99	468	—	7765	—	22	45.5	16.6	4.95
1999–00	349	—	5317	—	34	29.8	15.2	5.67
2000–01	327	—	5678	—	29	34.8	17.4	5.16
2001–02	321	—	3785	—	32	31.2	11.8	8.04
2002–03	378	—	4001	—	26	38.4	10.6	5.62
2003–04	434	—	5634	—	37	26.8	13.0	10.63
2004–05	391	—	6405	—	35	28.4	16.4	6.54
2005–06	230	—	1761	1537	246	4.1	14.3	9.83
2006–07	325	—	—	—	—	—	—	7.18
2007–08	300	—	2414	1576	50	19.8	13.3	10.85
2008–09	275	—	1639	729	58	17.4	8.6	6.21
2009–10	349	633	3439	946	39	25.9	12.6	7.09
2010–11	292	571	3958	1417	28	36.0	18.4	8.17
2011–12	289	453	3168	520	34	29.6	12.8	7.77
2012–13	377	614	4048	1577	35	28.4	14.9	14.08
2013–14	374	1066	4031	385	48	21.0	11.8	9.50
2014–15	354	743	4046	648	49	20.4	13.3	5.46
2015–16	343	627	3631	490	44	22.7	12.0	4.10
2016–17	264	523	2734	371	55	18.2	11.8	4.92
2017–18	258	601	3539	1181	29	34.8	18.3	3.92
2018–19	141	486	1798	376	48	21.0	15.4	6.49
2019–20	217	376	2979	652	27	37.6	16.7	6.55
2020–21	283	671	2858	935	118	8.5	13.4	—
2021–22	236	594	2450	373	38	26.2	12.0	3.75
2022–23	222	498	3267	353	19	52.1	18.0	6.53
Average	315	604	3205	827	40	35.8	11.3	7.72

*Trappers and raccoons per trapper include hunters and their harvest. Set-days per raccoon and raccoons per 1000 set-days are based only on trapping activity, and do not include hunt harvest or hunter-days afield.

Statewide raccoon harvest trends, Utah 1982–2023.



Raccoon trapping harvest statistics by county and ecoregion, Utah 2022–23.

County	n	Trappers afield	Trap harvest	Traps set	Trapping days	Set-days	Set-days / raccoon	Raccoons / 1000 set-days	Raccoons / trapper
Beaver	1	3	3	13	47	188	56.0	17.9	1.0
Box Elder	3	10	151	98	239	2934	19.4	51.6	15.0
Iron	2	7	24	57	114	1043	44.3	22.6	3.5
Juab	1	3	3	3	24	24	7.0	142.9	1.0
Millard	1	3	10	20	606	3634	360.0	2.8	3.0
Tooele	2	7	24	27	124	498	21.1	47.3	3.5
Great Basin totals	10	34	215	219	1154	8321	38.6	25.9	6.4
Cache	5	17	67	71	387	2187	32.5	30.8	4.0
Davis	4	13	784	448	229	4206	5.4	186.4	58.3
Morgan	2	7	74	24	330	1191	16.1	62.1	11.0
Piute	0	0	—	—	—	—	—	—	—
Rich	0	0	—	—	—	—	—	—	—
Salt Lake	2	7	44	27	336	1346	30.8	32.5	6.5
Sanpete	0	0	—	—	—	—	—	—	—
Sevier	6	20	333	145	1022	7874	23.6	42.3	16.5
Summit	0	0	—	—	—	—	—	—	—
Utah	12	40	437	424	956	10262	23.5	42.6	10.8
Wasatch	1	3	101	17	202	1009	10.0	100.0	30.0
Weber	3	10	861	522	27	2551	3.0	337.7	85.3
Rocky Mountain totals	35	118	2701	1676	3488	30626	11.3	88.2	22.9
Daggett	0	0	—	—	—	—	—	—	—
Duchesne	1	3	61	40	118	1413	23.3	42.9	18.0
Uintah	1	3	0	34	202	2019	—	0.0	0.0
Uintah Basin totals	2	7	61	74	320	3432	56.7	17.6	9.0
Carbon	1	3	7	40	135	1615	240.0	4.2	2.0
Emery	3	10	205	27	1918	9438	46.0	21.7	20.3
Garfield	2	7	7	—	—	—	—	—	1.0
Grand	0	0	—	—	—	—	—	—	—
Kane	0	0	—	—	—	—	—	—	—
San Juan	1	3	3	—	47	—	—	—	1.0
Washington	4	13	67	87	266	3234	48.1	20.8	5.0
Wayne	0	0	—	—	—	—	—	—	—
Colorado Plateau totals	11	37	289	155	2365	14287	49.4	20.3	7.8
Unknown	1	3	0	202	101	6057	—	0.0	0.0
Statewide totals*	54	182	3267	2326	7428	62724	19.2	52.1	18.0

*Statewide totals for sample size and trappers afield are not totals of the columns because trappers trapped multiple counties.

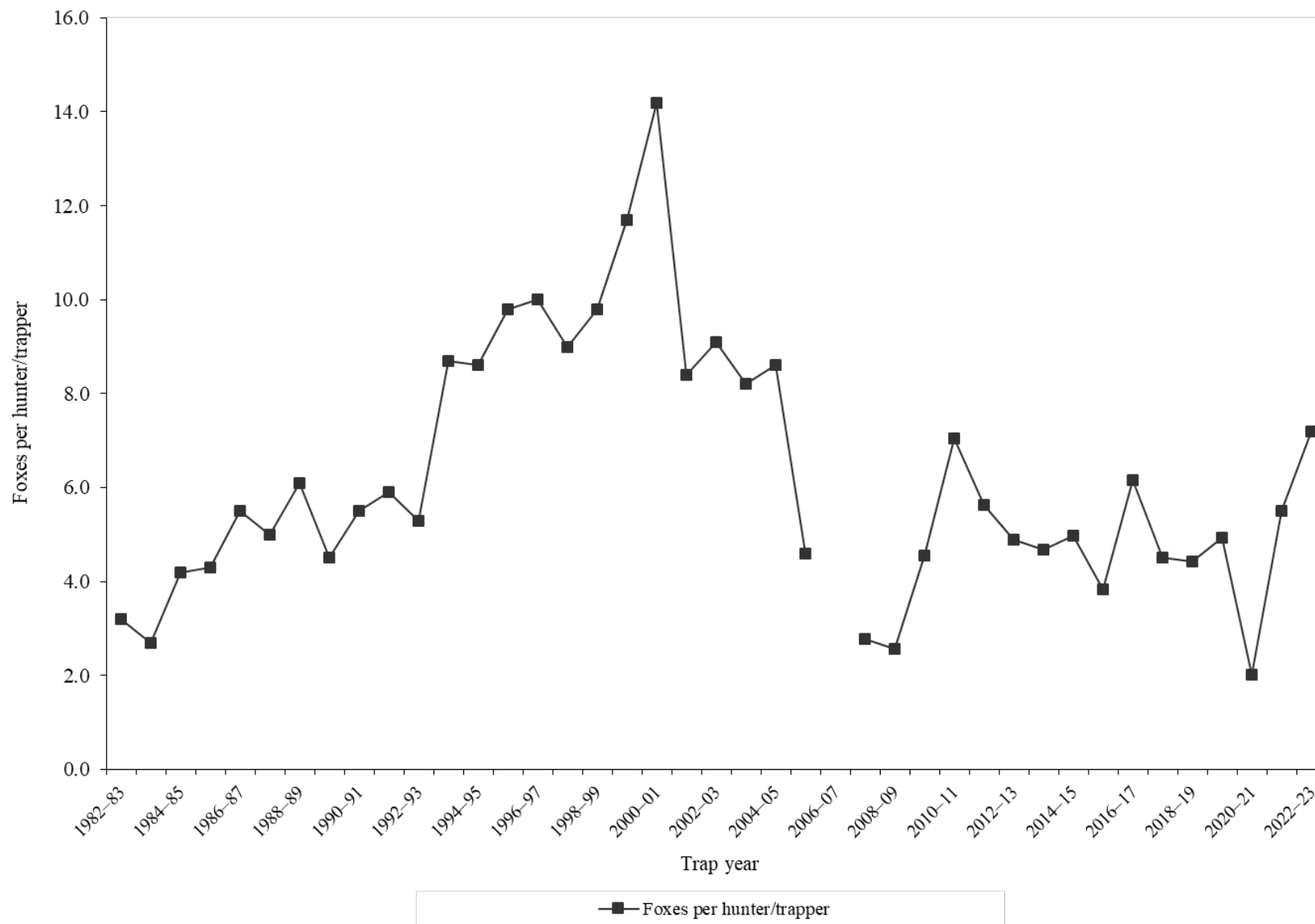
RED FOX

Statewide red fox harvest statistics*, Utah 1982–2023.

Trap year	Trappers afield	Incidental harvest	Trap harvest	Hunt harvest	Set-days / fox	Foxes / 1000 set-days	Foxes / trapper	Pelt price (\$)
1982–83	172	—	544	—	128	7.8	3.2	30.13
1983–84	191	—	523	—	134	7.5	2.7	28.43
1984–85	298	—	1244	—	116	8.7	4.2	25.90
1985–86	316	—	1351	—	74	13.6	4.3	15.83
1986–87	444	—	2446	—	59	17.1	5.5	20.14
1987–88	506	—	2545	—	50	20.2	5.0	13.66
1988–89	398	—	2446	—	34	29.2	6.1	6.57
1989–90	496	—	2250	—	40	25.3	4.5	7.80
1990–91	365	—	1993	—	25	40.0	5.5	6.34
1991–92	623	—	3663	—	28	35.4	5.9	10.70
1992–93	594	—	3126	—	27	37.5	5.3	10.12
1993–94	578	—	5055	—	26	38.9	8.7	14.74
1994–95	509	—	4378	—	36	28.0	8.6	15.34
1995–96	421	—	4115	—	26	38.7	9.8	18.08
1996–97	427	—	4274	—	27	36.8	10.0	17.48
1997–98	414	—	3744	—	32	31.5	9.0	11.31
1998–99	570	—	5600	—	34	29.5	9.8	8.95
1999–00	420	—	4900	—	44	22.7	11.7	14.19
2000–01	375	—	5330	—	52	19.1	14.2	16.92
2001–02	379	—	3192	—	59	16.9	8.4	24.48
2002–03	482	—	4399	—	76	13.1	9.1	28.19
2003–04	568	—	4639	—	71	14.1	8.2	18.07
2004–05	545	—	4674	—	102	9.8	8.6	18.86
2005–06	406	—	1874	—	196	5.1	4.6	24.35
2006–07	496	—	—	—	—	—	—	20.49
2007–08	407	—	1130	—	174	5.7	2.8	21.42
2008–09	339	—	872	—	261	3.8	2.6	17.98
2009–10	461	557	1908	192	102	9.8	4.6	16.32
2010–11	376	216	2435	213	84	12.0	7.0	22.62
2011–12	335	388	1757	128	84	11.9	5.6	42.47
2012–13	380	195	1690	171	83	12.1	4.9	43.50
2013–14	428	519	1934	64	154	6.5	4.7	40.39
2014–15	361	478	1714	79	161	6.2	5.0	24.30
2015–16	361	494	1183	203	180	5.6	3.8	15.37
2016–17	207	351	1175	99	249	4.0	6.2	16.16
2017–18	251	372	1048	84	122	8.2	4.5	14.63
2018–19	165	252	627	102	179	5.6	4.4	15.92
2019–20	192	233	669	277	116	8.6	4.9	18.89
2020–21	222	342	407	39	177	5.7	2.0	—
2021–22	184	529	731	42	107	9.4	5.5	14.26
2022–23	168	118	1040	40	43	23.3	7.2	10.34
Average	386	360	2466	124	94	17.1	6.2	19.04

*Trappers and foxes per trapper include hunters and their harvest. Set-days per fox and foxes per 1000 set-days are based only on trapping activity, and do not include hunt harvest or hunter-days afield.

Statewide red fox harvest trends, Utah 1982–2023.



Red fox trapping harvest statistics by county and ecoregion, Utah 2022–23.

County	n	Trappers afield	Trap harvest	Traps set	Trapping days	Set-days	Set-days / fox	Foxes / 1000 set-days	Foxes / trapper
Beaver	1	3	3	—	353	—	—	—	1.0
Box Elder	1	3	91	162	202	9691	106.7	9.4	27.0
Iron	0	0	—	—	—	—	—	—	—
Juab	0	0	—	—	—	—	—	—	—
Millard	0	0	—	—	—	—	—	—	—
Tooele	0	0	—	—	—	—	—	—	—
Great Basin totals	2	7	94	162	555	9691	102.9	9.7	14.0
Cache	1	3	3	20	50	303	90.0	11.1	1.0
Davis	5	17	448	306	495	3261	7.3	137.3	26.6
Morgan	2	7	37	37	350	1531	41.4	24.2	5.5
Piute	0	0	—	—	—	—	—	—	—
Rich	0	0	—	—	—	—	—	—	—
Salt Lake	1	3	0	7	303	606	—	0.0	0.0
Sanpete	2	7	7	27	108	713	106.0	9.4	1.0
Sevier	4	13	40	67	229	1400	34.7	28.8	3.0
Summit	0	0	—	—	—	—	—	—	—
Utah	8	27	84	185	996	15286	181.7	5.5	3.1
Wasatch	1	3	3	7	20	40	12.0	83.3	1.0
Weber	1	3	252	252	20	1514	6.0	166.7	75.0
Rocky Mountain totals	25	84	874	909	2571	24654	28.2	35.5	10.4
Daggett	0	0	—	—	—	—	—	—	—
Duchesne	4	13	7	98	306	4576	680.0	1.5	0.5
Uintah	4	13	20	10	259	909	45.0	22.2	1.5
Uintah Basin totals	8	27	27	108	565	5485	203.8	4.9	1.0
Carbon	1	3	0	40	135	1615	—	0.0	0.0
Emery	2	7	3	3	7	7	2.0	500.0	0.5
Garfield	1	3	10	—	—	—	—	—	3.0
Grand	0	0	—	—	—	—	—	—	—
Kane	1	3	20	17	236	1178	58.3	17.1	6.0
San Juan	2	7	3	—	7	—	—	—	0.5
Washington	0	0	—	—	—	—	—	—	—
Wayne	0	0	—	—	—	—	—	—	—
Colorado Plateau totals	7	24	36	61	384	2800	75.6	13.2	1.6
Unknown	2	7	7	101	104	2019	300.0	3.3	1.0
Statewide totals*	43	145	1040	1339	4179	44648	42.9	23.3	7.2

*Statewide totals for sample size and trappers afield are not totals of the columns because trappers trapped multiple counties.

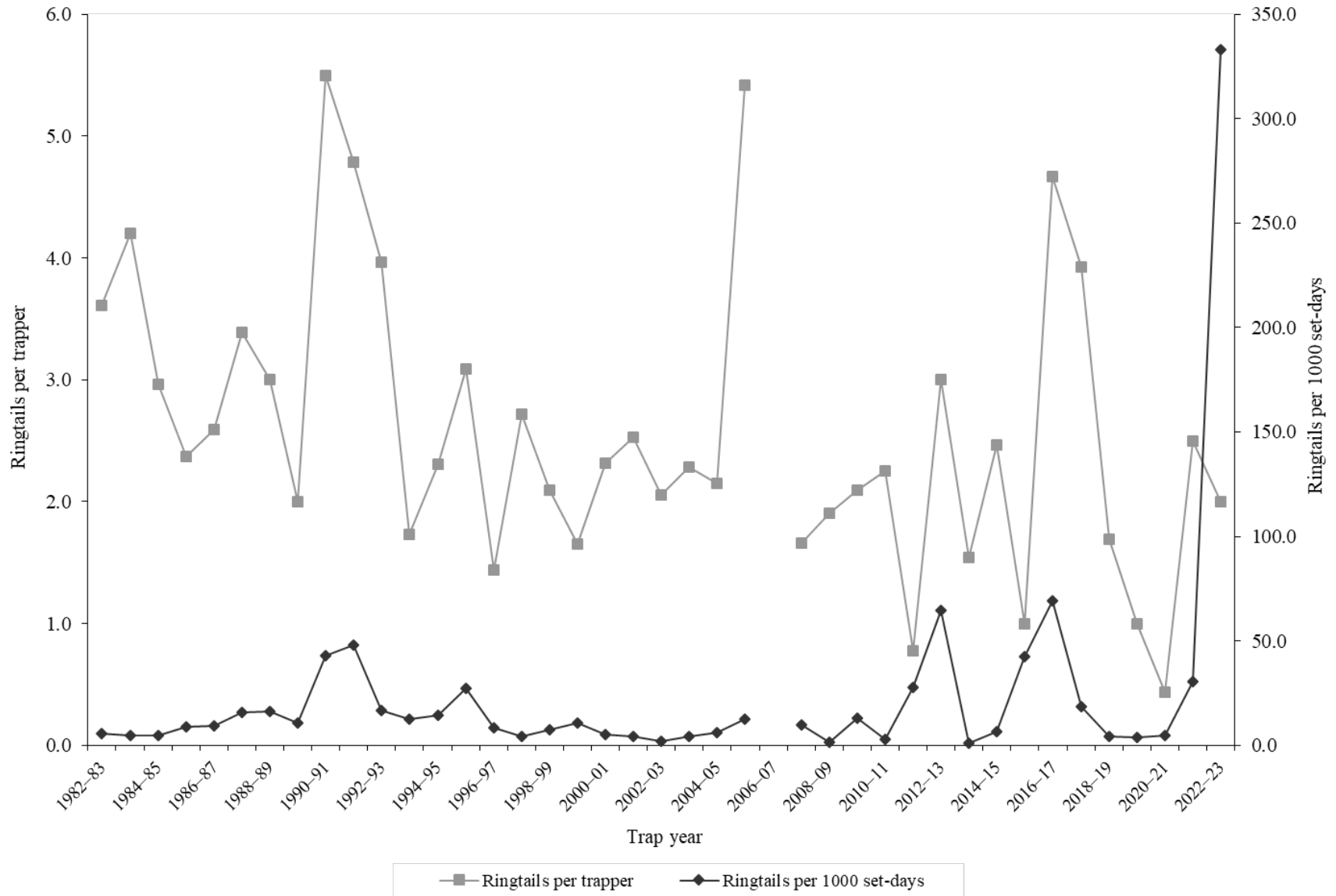
RINGTAIL

Statewide ringtail harvest statistics*, Utah 1982–2023.

Trap year	Trappers afield	Incidental harvest	Trap harvest	Hunt harvest	Set-days / ringtail	Ringtails / 1000 set-days	Ringtails / trapper	Pelt price (\$)
1982–83	90	—	325	—	176	5.7	3.6	4.40
1983–84	90	—	378	—	203	4.9	4.2	3.96
1984–85	85	—	252	—	218	4.6	3.0	3.15
1985–86	68	—	161	—	114	8.8	2.4	2.69
1986–87	79	—	205	—	105	9.6	2.6	3.64
1987–88	79	—	268	—	62	16.0	3.4	2.40
1988–89	62	—	186	—	61	16.4	3.0	5.70
1989–90	66	—	132	—	93	10.7	2.0	2.65
1990–91	18	—	99	—	23	42.8	5.5	3.50
1991–92	46	—	220	—	21	48.1	4.8	3.22
1992–93	27	—	107	—	59	16.9	4.0	3.97
1993–94	37	—	64	—	80	12.6	1.7	4.04
1994–95	69	—	159	—	70	14.3	2.3	6.41
1995–96	44	—	136	—	37	27.4	3.1	6.96
1996–97	32	—	46	—	122	8.2	1.4	11.68
1997–98	21	—	57	—	227	4.4	2.7	2.99
1998–99	66	—	138	—	134	7.5	2.1	4.17
1999–00	61	—	101	—	93	10.7	1.7	7.03
2000–01	51	—	118	—	194	5.2	2.3	6.00
2001–02	40	—	101	—	236	4.2	2.5	10.29
2002–03	56	—	115	—	474	2.1	2.1	5.20
2003–04	42	—	96	—	223	4.5	2.3	6.83
2004–05	59	—	127	—	165	6.1	2.2	11.12
2005–06	19	—	103	—	79	12.7	5.4	9.31
2006–07	98	—	—	—	—	—	—	12.37
2007–08	65	—	108	—	104	9.6	1.7	14.86
2008–09	31	—	59	—	621	1.6	1.9	10.70
2009–10	22	63	46	—	77	13.0	2.1	15.00
2010–11	16	26	36	—	356	2.8	2.3	18.91
2011–12	18	14	14	—	36	27.6	0.8	12.21
2012–13	7	41	21	0	16	64.5	3.0	15.66
2013–14	24	64	37	0	991	1.0	1.5	17.91
2014–15	13	32	32	0	150	6.7	2.5	17.27
2015–16	18	52	18	0	24	42.4	1.0	12.56
2016–17	18	18	84	0	14	69.3	4.7	23.47
2017–18	28	47	110	2	55	18.4	3.9	20.81
2018–19	13	0	15	7	221	4.5	1.7	10.36
2019–20	6	0	6	0	271	3.7	1.0	27.77
2020–21	16	0	7	0	219	4.6	0.4	—
2021–22	12	12	12	5	33	30.3	2.5	20.22
2022–23	7	20	7	0	3	333.3	2.0	25.37
Average	42	28	108	1	161	23.4	2.6	10.17

*Trappers and ringtails per trapper include hunters and their harvest. Set-days per ringtail and ringtails per 1000 set-days are based only on trapping activity, and do not include hunt harvest or hunter-days afield.

Statewide ringtail harvest trends, Utah 1982–2023.



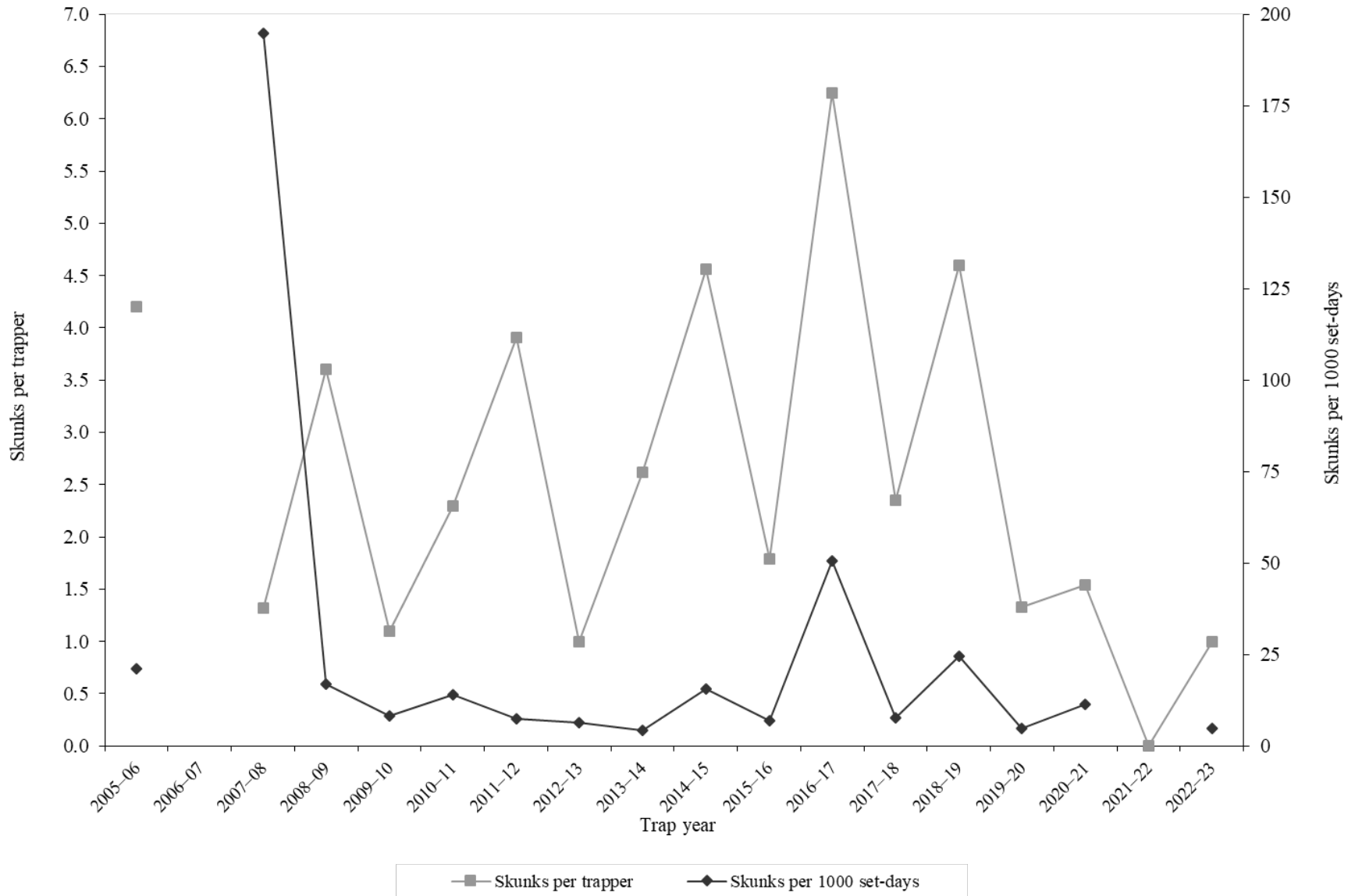
SPOTTED SKUNK

Statewide spotted skunk harvest statistics*, Utah 2005–2023.

Trap year	Trappers afield	Incidental harvest	Trap harvest	Hunt harvest	Set-days / skunk	Skunks / 1000 set-days	Skunks / trapper	Pelt price (\$)
2005–06	34	—	144	—	47	21.2	4.2	5.37
2006–07	106	—	—	—	—	—	—	12.42
2007–08	34	—	45	—	5	194.8	1.3	12.07
2008–09	67	—	238	—	60	16.8	3.6	8.00
2009–10	19	95	21	—	124	8.1	1.1	15.00
2010–11	33	200	76	—	71	14.0	2.3	15.00
2011–12	11	221	14	29	135	7.4	3.9	8.25
2012–13	17	137	17	0	156	6.4	1.0	14.48
2013–14	13	206	17	17	230	4.3	2.6	13.51
2014–15	25	285	114	0	65	15.5	4.6	9.80
2015–16	33	321	55	4	145	6.9	1.8	6.09
2016–17	8	63	50	0	20	50.5	6.3	5.51
2017–18	23	155	47	7	130	7.7	2.3	8.65
2018–19	15	115	69	0	41	24.5	4.6	—
2019–20	6	68	8	0	205	4.9	1.3	—
2020–21	13	26	20	0	87	11.5	1.5	—
2021–22	0	45	0	0	—	—	0.0	—
2022–23	3	20	3	0	210	4.8	1.0	—
Average	26	140	55	5	108	25.0	2.6	10.32

*Trappers and skunks per trapper include hunters and their harvest. Set-days per skunk and skunks per 1000 set-days are based only on trapping activity, and do not include hunt harvest or hunter-days afield.

Statewide spotted skunk* harvest trends, Utah 2005–2023.



*Prior to 2005–06, spotted skunk harvest and trapping activity were combined with striped skunk.

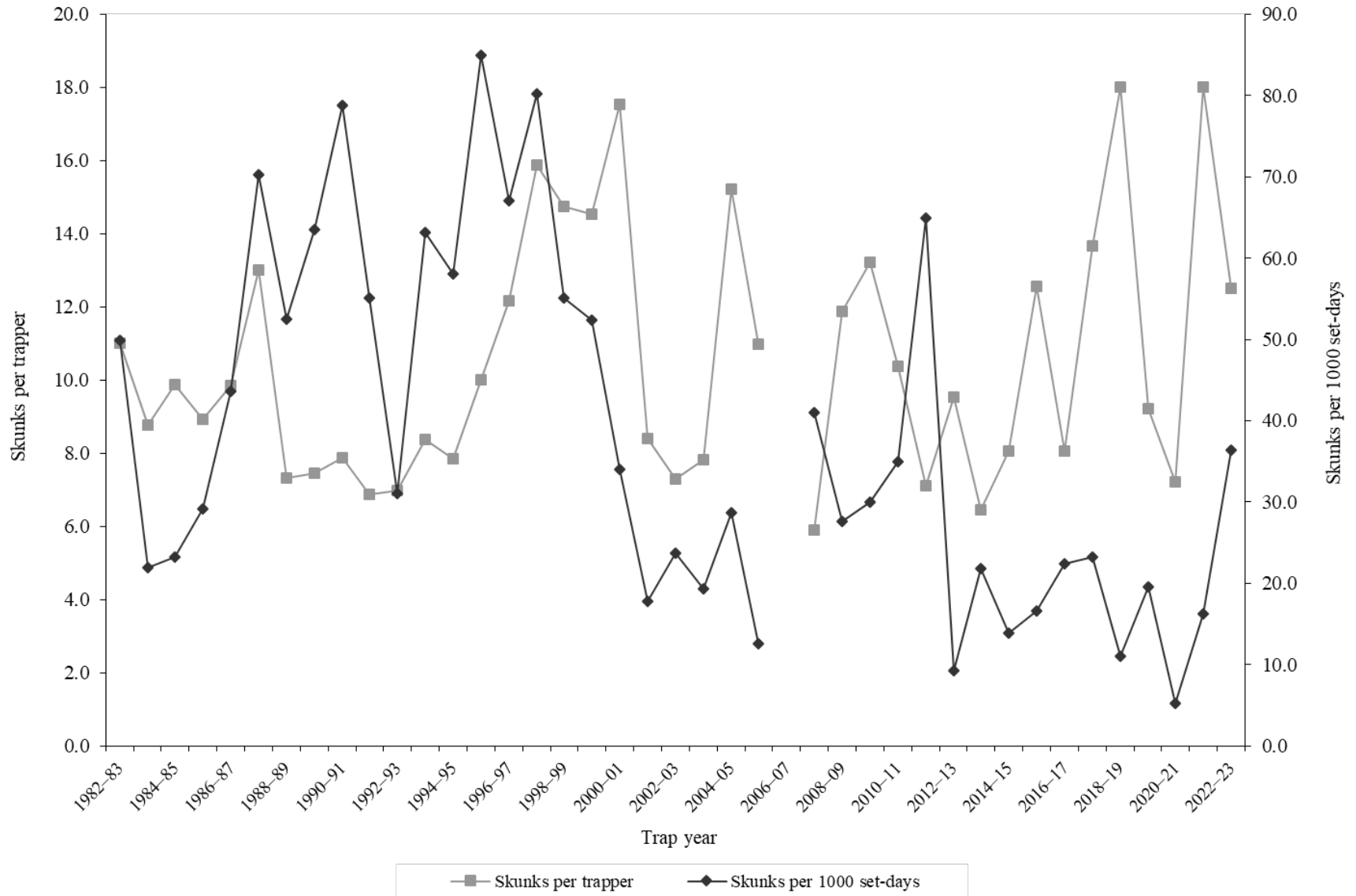
STRIPED SKUNK

Statewide striped skunk harvest statistics*, Utah 1982–2023.

Trap year	Trappers afield	Incidental harvest	Trap harvest	Hunt harvest	Set-days / skunk	Skunks / 1000 set-days	Skunks / trapper	Pelt price (\$)
1982–83	140	—	1540	—	20	49.9	11.0	3.00
1983–84	144	—	1262	—	45	22.0	8.8	2.85
1984–85	111	—	1097	—	43	23.3	9.9	2.17
1985–86	195	—	1741	—	34	29.1	8.9	—
1986–87	188	—	1851	—	23	43.6	9.8	—
1987–88	185	—	2404	—	14	70.2	13.0	1.05
1988–89	132	—	966	—	19	52.5	7.3	0.30
1989–90	173	—	1289	—	16	63.6	7.5	0.30
1990–91	82	—	645	—	13	78.8	7.9	0.30
1991–92	151	—	1037	—	18	55.2	6.9	4.00
1992–93	132	—	922	—	32	31.1	7.0	5.30
1993–94	175	—	1465	—	16	63.2	8.4	7.35
1994–95	183	—	1438	—	17	58.1	7.9	9.29
1995–96	175	—	1753	—	12	84.9	10.0	6.63
1996–97	142	—	1726	—	15	67.1	12.2	6.00
1997–98	182	—	2890	—	12	80.2	15.9	4.11
1998–99	219	—	3227	—	18	55.1	14.7	5.67
1999–00	188	—	2730	—	19	52.3	14.5	8.50
2000–01	220	—	3857	—	29	34.0	17.5	8.69
2001–02	214	—	1798	—	56	17.8	8.4	6.79
2002–03	237	—	1732	—	42	23.7	7.3	4.24
2003–04	295	—	2305	—	52	19.3	7.8	10.00
2004–05	280	—	4264	—	35	28.7	15.2	4.64
2005–06	95	—	1043	—	79	12.6	11.0	5.37
2006–07	138	—	—	—	—	—	—	6.07
2007–08	144	—	848	—	24	41.0	5.9	4.52
2008–09	143	—	1697	—	36	27.6	11.9	3.15
2009–10	124	1632	1638	—	33	30.0	13.2	6.47
2010–11	154	1136	1597	—	29	35.0	10.4	5.29
2011–12	107	916	602	160	15	65.0	7.1	4.55
2012–13	137	1159	1241	65	108	9.3	9.5	5.01
2013–14	108	1272	654	44	46	21.8	6.5	6.96
2014–15	82	1230	645	16	72	13.9	8.1	4.94
2015–16	111	818	1187	206	60	16.6	12.5	4.40
2016–17	65	727	521	3	45	22.4	8.1	5.95
2017–18	115	919	1198	373	43	23.2	13.7	6.16
2018–19	63	430	1052	82	90	11.1	18.0	12.15
2019–20	70	607	562	83	51	19.6	9.2	9.60
2020–21	94	573	632	46	189	5.3	7.2	—
2021–22	55	741	987	0	61	16.3	18.0	—
2022–23	71	289	717	30	28	36.4	12.5	—
Average	147	889	1519	92	40	37.8	10.5	5.33

*Trappers and skunks per trapper include hunters and their harvest. Set-days per skunk and skunks per 1000 set-days are based only on trapping activity, and do not include hunt harvest or hunter-days afield.

Statewide striped skunk* harvest trends, Utah 1982–2023.



*Prior to 2005–06, harvest and trapping activity included both striped skunk and spotted skunk.

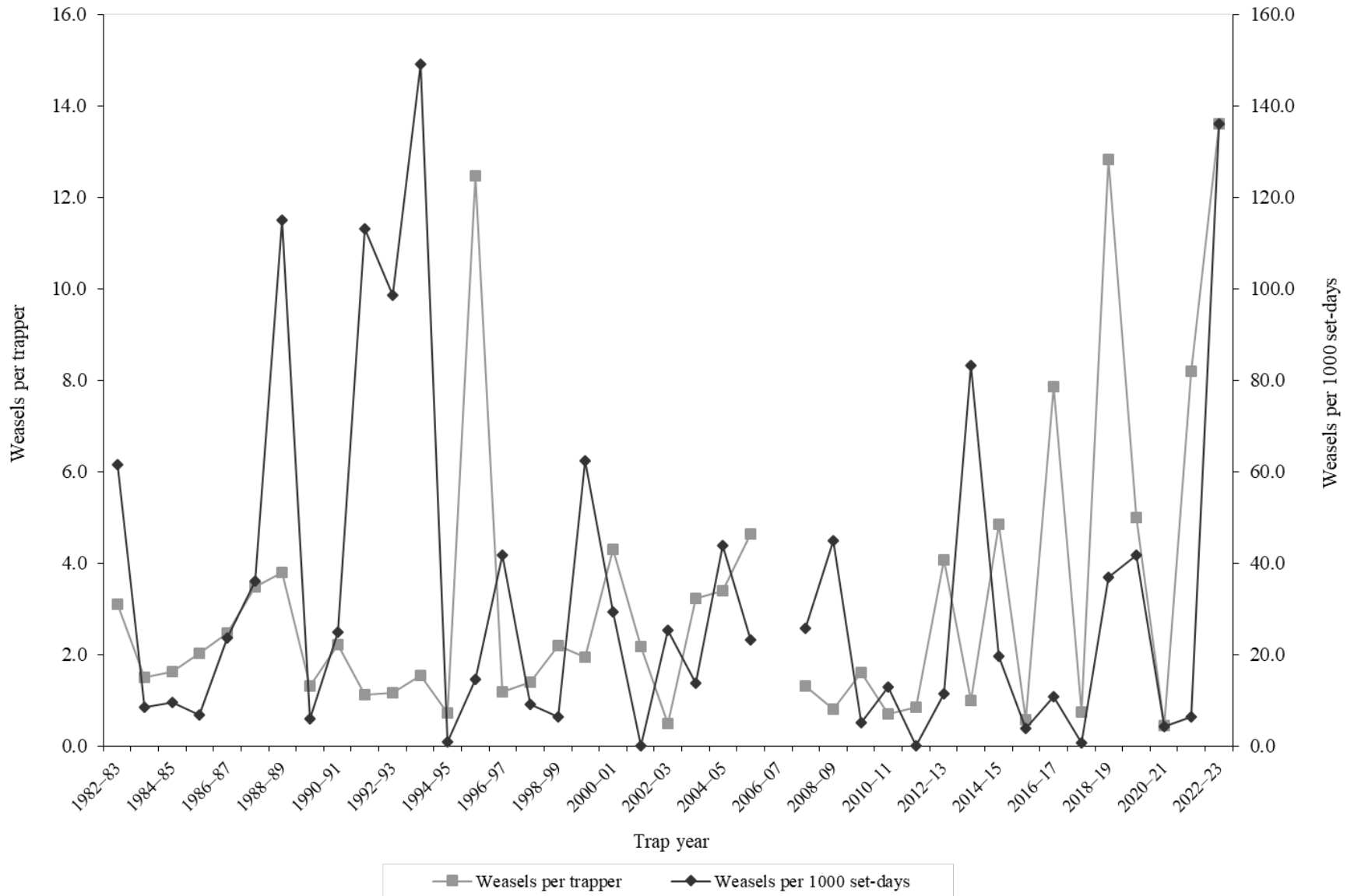
WEASEL

Statewide weasel harvest statistics*, Utah 1982–2023.

Trap year	Trappers afield	Incidental harvest	Trap harvest	Hunt harvest	Set-days / weasel	Weasels / 1000 set-days	Weasels / trapper	Pelt price (\$)
1982–83	19	—	59	—	16	61.5	3.1	1.00
1983–84	22	—	33	—	117	8.5	1.5	0.00
1984–85	46	—	75	—	106	9.4	1.6	0.75
1985–86	33	—	67	—	149	6.7	2.0	0.00
1986–87	50	—	123	—	42	23.6	2.5	1.50
1987–88	61	—	212	—	28	36.1	3.5	1.18
1988–89	24	—	91	—	9	115.0	3.8	0.25
1989–90	25	—	33	—	166	6.0	1.3	0.25
1990–91	14	—	31	—	40	24.8	2.2	0.30
1991–92	17	—	19	—	9	113.1	1.1	0.30
1992–93	24	—	28	—	10	98.6	1.2	0.30
1993–94	20	—	31	—	7	149.0	1.6	5.11
1994–95	18	—	13	—	1189	0.8	0.7	1.57
1995–96	24	—	299	—	69	14.6	12.5	3.08
1996–97	11	—	13	—	24	41.7	1.2	7.40
1997–98	20	—	28	—	111	9.0	1.4	3.03
1998–99	15	—	33	—	157	6.4	2.2	5.50
1999–00	34	—	66	—	16	62.4	1.9	—
2000–01	36	—	155	—	34	29.3	4.3	8.50
2001–02	6	—	13	—	0	—	2.2	—
2002–03	6	—	3	—	39	25.4	0.5	4.76
2003–04	18	—	58	—	73	13.8	3.2	—
2004–05	25	—	85	—	23	43.9	3.4	2.90
2005–06	41	—	190	—	43	23.3	4.6	—
2006–07	49	—	—	—	—	—	—	6.26
2007–08	11	—	15	—	39	25.6	1.3	2.99
2008–09	14	—	11	—	22	44.9	0.8	—
2009–10	29	13	47	—	196	5.1	1.6	7.64
2010–11	23	20	17	—	78	12.8	0.7	7.21
2011–12	25	4	0	21	—	0.0	0.8	4.58
2012–13	27	21	110	0	87	11.5	4.1	—
2013–14	3	10	3	0	12	83.3	1.0	5.00
2014–15	13	13	63	0	51	19.7	4.8	3.89
2015–16	26	15	11	4	258	3.9	0.6	3.06
2016–17	29	8	228	0	93	10.7	7.9	3.55
2017–18	19	7	12	2	1795	0.6	0.7	1.00
2018–19	11	26	139	2	27	37.0	12.8	—
2019–20	2	4	10	0	24	41.7	5.0	9.18
2020–21	16	3	7	0	233	4.3	0.4	—
2021–22	15	0	122	0	159	6.3	8.2	—
2022–23	17	0	229	0	7	136.0	13.6	—
Average	23	10	70	2	143	35.0	3.2	3.29

*Trappers and weasels per trapper include hunters and their harvest. Set-days per weasel and weasels per 1000 set-days are based only on trapping activity, and do not include hunt harvest or hunter-days afield.

Statewide weasel harvest trends, Utah 1982–2023.



APPENDIX: UTAH FURBEARER MANAGEMENT ECOREGIONS

