

# UTAH FURBEARER ANNUAL REPORT 2020–2021



Publication No. 21-18



# UTAH FURBEARER ANNUAL REPORT 2020–2021

Prepared by:

**Heather H. Bernales**  
Biometrician

and

**Darren DeBlois**  
Mammals Program Coordinator

Publication No. 21-18

Annual Performance Report for Federal Aid Project W-65-M, segment 69

State of Utah  
Department of Natural Resources  
DIVISION OF WILDLIFE RESOURCES

**Rory Reynolds**  
Interim Director

## TABLE OF CONTENTS

Definitions.....	1
Introduction.....	2
Methods.....	2
Results.....	3
Harvest by species.....	8
Badger.....	9
Beaver.....	12
Bobcat.....	16
Coyote.....	25
Gray fox.....	29
Kit fox.....	32
Marten.....	33
Mink.....	37
Muskrat.....	39
Raccoon.....	42
Red fox.....	45
Ringtail.....	48
Spotted skunk.....	50
Striped skunk.....	52
Weasel.....	55
Appendix: Utah furbearer management ecoregions.....	57

## DEFINITIONS

**Incidental harvest:** Furbearers harvested in traps intended for a different furbearer species.

**Trap year:** Time frame corresponding to the 2020–21 furbearer seasons, as outlined in the 2020–21 Utah Furbearer Guidebook.

**Trappers afield:** Number of furbearer license holders who trapped furbearers during a particular trap year. License holders who took furbearers by means other than trapping, including shooting or with the aid of dogs, are included in this figure except for bobcat.

**Total harvest:** Number of furbearers of a particular species taken by means of trapping and hunting by furbearer license holders. This figure does not include harvest of unprotected wildlife, such as coyote, muskrat, red fox, raccoon, or striped skunk, taken by persons who did not purchase a furbearer license, nor does it include harvest of furbearers taken for creating a nuisance or causing damage.

**Total set-days:** Number of traps set during the furbearer season for the trapping of a particular species, multiplied by the number of days these traps were in the field. This figure pertains only to trapping, and does not include days afield by furbearer hunters or pursuers.

**Pelt price:** Average price paid for pelts of a specific furbearer species harvested in Utah, obtained mainly from a summary of the prices bid at the Utah Trappers Association fur auction, as well as prices from a survey of registered furdealers buying pelts harvested in Utah.

**Wildlife Services harvest (coyote only):** Number of coyotes taken by USDA-APHIS Wildlife Services in a particular year. Prior to 2006–07, Wildlife Services yearly harvest summaries applied to their fiscal year, which begins October 1 and ends September 30, although most harvest takes place during spring. Beginning in 2006–07, Wildlife Services harvest is reported for the period July 1 to June 30 of the following year.

## **INTRODUCTION**

The furbearer harvest report presents furbearer harvest and trapper/hunter effort trends across the state of Utah, based on data collected from furbearer trappers and hunters. This report represents the furbearer portion of the Annual Performance Report for Federal Aid Project W-65-M, segment 69, grant agreement period July 1, 2020 through June 30, 2021. This Federal Aid project covers the 2020–21 trapping seasons. Additionally this report presents statewide trends since the early 1980s and population trend indicators for bobcats as well as the estimated economic value of Utah’s furbearer harvest each year. Furbearer harvest and trapper/hunter effort may have been more driven by pelt price than by availability, so annual fur harvest should not be used as the sole means to assess/project population sizes.

Furbearers included badger, beaver, bobcat, gray fox, kit fox, mink, marten, ringtail, spotted skunk, and weasel. A furbearer license was required to harvest any of these species, and additional permits were required to harvest bobcats and martens. There were no bag limits for furbearers, except bobcats. Each bobcat permit allowed a person to harvest one bobcat, and a single person could obtain up to 4 bobcat permits in 2020–21. Sales of bobcat permits were again capped at 6,460. Season dates for badger, gray fox, kit fox, marten, ringtail, spotted skunk, and weasel were September 19, 2020 through March 1, 2021. Bobcat season was November 25, 2020 through March 1, 2021. Season dates for beaver and mink were September 19, 2020 through April 1, 2021.

Coyote, muskrat, red fox, raccoon, and striped skunk were not under the jurisdiction of the Division, and/or were unprotected. Those species could be taken year round without a license; therefore, results presented in this report do not include harvest by persons who did not purchase a furbearer license. It was prohibited to take black-footed ferret, fisher, lynx, river otter, wolf, and wolverine.

## **METHODS**

Furbearer harvest and effort information was obtained from a telephone/web mixed-mode survey of a statistically-valid random sample of furbearer license holders. The accuracy of that survey was dependent upon the following assumptions: (1) a random sample was achieved (i.e., there was no response bias by those who harvested successfully versus those who did not), (2) respondents recorded or remembered data accurately and did not guess or lie, and (3) respondents clearly understood the questions.

Trappers who harvested bobcats and martens were required to bring the animals’ pelts to a Division office or officer to have permanent tags attached and to surrender the lower jaws. Bobcat and marten harvest data presented in this report, such as county of kill and sex of harvest, were collected at that time; as such, that information was not projected. Additional information on bobcat harvest, such as harvest effort by method, trappers-afield, number of sets, and number of days was determined by the survey mentioned in the preceding paragraph. Due to the small number of marten trappers in Utah, we did not attempt to survey marten trappers. Instead, since a separate permit is required to trap marten, we assumed that all those who purchased a marten permit attempted to trap marten.

To determine age structure of the bobcat harvest, a canine tooth from each bobcat jaw was sectioned, and aged using cementum annuli by Matson's Lab in Manhattan, Montana. Survival rates were estimated using the Chapman-Robson estimator. Pelt prices were obtained mainly from a summary of the prices bid at the Utah Trappers Association fur auction, as well as from a survey of registered furdealers buying pelts harvested in Utah.

Because some furbearer species in Utah were rare or not highly sought after by trappers, it was not possible to achieve sufficient sample sizes for these species to make valid statistical inferences. Although the trends for statewide harvest and effort were still valid, at the county level, the harvest and effort estimates had low precision and were likely inaccurate. As such, results by county were only reported for species with a sample size  $\geq 20$ .

## **RESULTS**

### **License Sales and General Survey Results**

Furbearer licenses were valid for 365 days from the date of purchase. We used the 365-day period of April 1 to March 31 to determine the total number of furbearer licenses sold for the furbearer season. A total of 2,333 furbearer licenses were sold for the 2020–21 season. The percentage of license holders who bought a furbearer license but did not attempt to harvest furbearers was 40%. The number of trappers afield in 2020–21 was 1,398.

### **Furbearer Harvest, Historical Trends, and Economic Value**

The majority of the harvest taken by furbearer license holders in 2020–21 was of non-protected species—coyote, muskrat, and raccoon. Total harvest of regulated furbearer species (i.e., species with designated trapping seasons) was 3,258 in 2020–21, lower than any other year during the last 10 years.

The Utah Trappers Association cancelled its annual Fur Sale in 2021 because of restrictions due to the COVID-19 pandemic. Therefore, this report does not include average pelt prices nor economic projections from the 2020–21 Utah furbearer harvest.

Furbearer license sales and survey responses, Utah 1982–2021.

Trap year	Furbearer licenses sold			License holders surveyed		Projection factor	% license holders not afield
	Resident	Nonresident	Total	Total	Percent (%)		
1982–83	—	—	1325	664	50.1	—	—
1983–84	—	—	1367	616	45.1	—	—
1984–85	—	—	1491	806	54.1	—	—
1985–86	—	—	1424	680	47.8	—	—
1986–87	—	—	1342	585	43.6	—	—
1987–88	—	—	1576	731	46.4	—	—
1988–89	—	—	1318	721	54.7	—	—
1989–90	—	—	1084	597	55.1	—	—
1990–91	—	—	949	513	54.1	—	30.0
1991–92	—	—	1210	689	56.9	—	2.2
1992–93	—	—	1426	857	60.1	—	16.0
1993–94	—	—	1315	—	—	—	—
1994–95	—	—	1287	585	45.5	—	7.0
1995–96	—	—	1240	683	55.1	—	21.2
1996–97	—	—	1131	606	53.6	—	25.4
1997–98	—	—	1190	498	41.8	—	19.5
1998–99	—	—	1191	395	33.2	—	19.8
1999–00	1172	39	1211	458	37.8	2.6	11.6
2000–01	1204	20	1224	420	34.3	2.9	12.4
2001–02	956	21	977	302	30.9	3.2	11.6
2002–03	1409	40	1449	514	35.5	2.8	16.3
2003–04	1729	47	1776	597	33.6	3.0	16.9
2004–05	1830	65	1895	615	32.5	3.1	18.2
2005–06	1631	57	1688	260	15.4	6.5	27.7
2006–07	2029	81	2110	262	12.4	8.1	26.7
2007–08	2085	55	2140	563	26.3	3.8	31.8
2008–09	2045	57	2102	750	35.7	2.8	34.8
2009–10	1902	34	1936	798	41.2	2.4	30.2
2010–11	1788	29	1817	555	30.5	3.3	30.1
2011–12	1856	36	1892	531	28.1	3.6	33.3
2012–13	2080	52	2132	622	29.2	3.4	34.4
2013–14	2389	60	2449	726	29.6	3.4	35.4
2014–15	2802	67	2869	907	31.6	3.2	41.1
2015–16	2580	52	2632	714	27.1	3.7	35.6
2016–17	2078	54	2132	815	38.2	2.6	31.2
2017–18	1972	54	2026	864	42.6	2.3	44.1
2018–19	1836	44	1880	866	46.1	2.2	51.0
2019–20	1422	48	1470	712	48.4	2.1	39.5
2020–21	2275	58	2333	716	30.7	3.3	40.1
Average	1867	49	1641	626	39.9	2.8	26.5

Statewide total furbearer harvest\* estimates by species, Utah 2011–2021.

Species	Trap year										Average 2011–21
	2011–12	2012–13	2013–14	2014–15	2015–16	2016–17	2017–18	2018–19	2019–20	2020–21	
Badger	217	302	371	417	648	486	297	369	227	306	364
Beaver	1026	2276	2021	1388	1511	973	945	741	950	929	1276
Bobcat	1245	1365	1870	2919	1683	1856	2954	1652	1173	1011	1773
Coyote	5296	5749	5784	6873	8001	5124	5259	3590	3484	6350	5551
Gray fox	1002	1288	1318	1015	1106	625	1067	669	429	756	928
Kit fox	110	373	14	145	99	154	44	13	103	62	112
Marten	14	26	16	22	9	2	15	11	8	4	13
Mink	221	867	1012	341	188	246	272	246	361	127	388
Muskrat	8266	13650	8764	6092	6175	3163	7265	3491	4992	4962	6682
Raccoon	4141	6239	5482	5437	4748	3628	5321	2660	4007	4464	4613
Red fox	2273	2056	2517	2272	1880	1625	1503	981	1179	788	1707
Ringtail	28	62	101	64	70	102	160	22	6	7	62
Spotted skunk	264	154	240	399	380	113	209	184	76	46	207
Striped skunk	1679	2465	1970	1875	2211	1250	2490	1564	1251	1251	1801
Weasel	25	131	13	76	30	236	21	167	14	10	72

\*Total harvest includes incidental take.



Statewide furbearer trapping harvest statistics\* by species, Utah 2020–2021.

Species	Trappers afield	Trap harvest	Set-days	Set-days / furbearer	Furbearers / 1000 set-days	Furbearers / trapper
Badger	49	98	10270	105.1	9.5	2.0
Beaver	169	909	22571	24.8	40.3	5.4
Bobcat	762	833	454600	545.7	1.8	1.1
Coyote	564	3076	552999	179.8	5.6	5.5
Gray fox	62	358	41153	114.8	8.7	5.8
Kit fox	3	10	456	46.7	21.4	3.0
Marten	179	4	—	—	—	—
Mink	26	91	2792	30.6	32.7	3.5
Muskrat	98	4897	62391	12.7	78.5	50.1
Raccoon	248	2858	336045	117.6	8.5	11.5
Red fox	202	407	71874	176.5	5.7	2.0
Ringtail	16	7	1427	219.0	4.6	0.4
Spotted skunk	13	20	1698	86.8	11.5	1.5
Striped skunk	78	632	119224	188.6	5.3	8.1
Weasel	16	7	1515	232.5	4.3	0.4

\*Does not include incidental harvest.

Statewide furbearer hunting harvest by species, Utah 2020–2021.

Species	Hunters afield	Hunt harvest	Hunting days	Days / furbearer	Furbearers / hunter
Badger	42	72	775	10.8	1.7
Beaver	7	10	—	—	1.5
Bobcat	242	178	2970	16.7	0.7
Coyote	440	3004	10880	3.6	6.8
Gray fox	3	3	7	2.0	1.0
Kit fox	0	—	—	—	—
Mink	0	—	—	—	—
Muskrat	0	—	—	—	—
Raccoon	59	935	922	1.0	15.9
Red fox	23	39	163	4.2	1.7
Ringtail	0	—	—	—	—
Spotted skunk	0	—	—	—	—
Striped skunk	16	46	1202	26.4	2.8
Weasel	0	—	—	—	—

Number of furbearers harvested in traps set for other species (i.e. incidental take), Utah 2020–2021.

Species	Incidental harvest	Trap / hunt harvest	Total harvest	% incidental harvest
Badger	137	169	306	44.8
Beaver	10	919	929	1.1
Bobcat*	60	1011	1011	5.9
Coyote	270	6080	6350	4.3
Gray fox	394	362	756	52.1
Kit fox	52	10	62	83.9
Marten	0	4	4	0.0
Mink	36	91	127	28.3
Muskrat	65	4897	4962	1.3
Raccoon	671	3793	4464	15.0
Red fox	342	446	788	43.4
Ringtail	0	7	7	0.0
Spotted skunk	26	20	46	56.5
Striped skunk	573	678	1251	45.8
Weasel	3	7	10	30.0
Total	2639	18494	21073	12.5

\*Incidental bobcat harvest is accounted for in trap harvest.

## **HARVEST BY SPECIES**

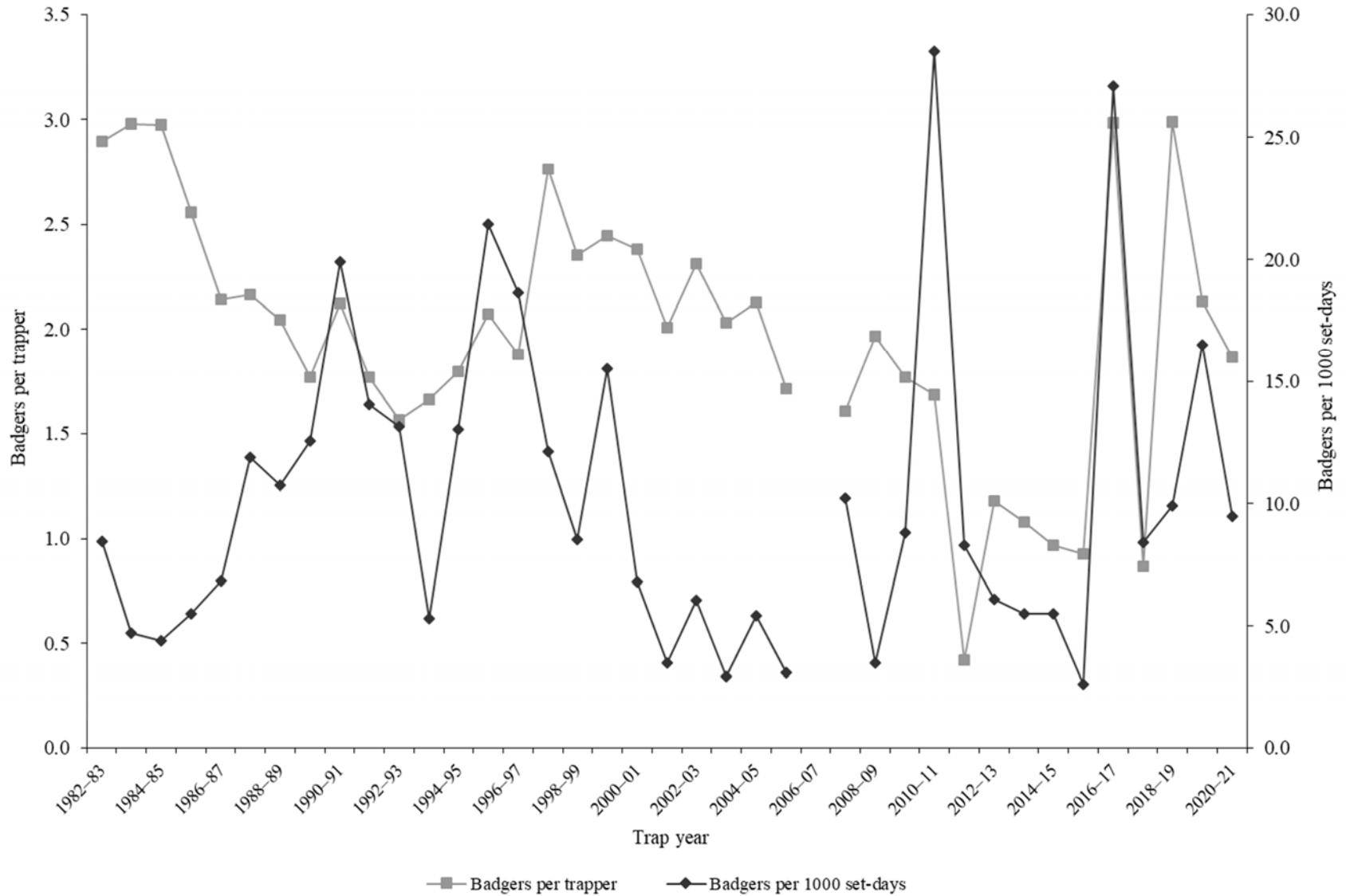
## BADGER

Statewide badger harvest statistics\*, Utah 1982–2021.

Trap year	Trappers afield	Incidental harvest	Trap harvest	Hunt harvest	Set-days / badger	Badgers / 1000 set-days	Badgers / trapper	Pelt price (\$)
1982–83	250	—	725	—	118	8.5	2.9	8.20
1983–84	188	—	560	—	212	4.7	3.0	8.56
1984–85	225	—	670	—	227	4.4	3.0	10.14
1985–86	194	—	496	—	182	5.5	2.6	3.96
1986–87	198	—	424	—	146	6.8	2.1	7.64
1987–88	212	—	459	—	84	11.9	2.2	6.04
1988–89	204	—	417	—	93	10.7	2.0	4.66
1989–90	207	—	366	—	80	12.5	1.8	4.78
1990–91	81	—	172	—	50	19.9	2.1	7.27
1991–92	134	—	237	—	71	14.1	1.8	8.50
1992–93	148	—	232	—	76	13.2	1.6	9.95
1993–94	143	—	238	—	188	5.3	1.7	7.18
1994–95	182	—	327	—	77	13.0	1.8	13.93
1995–96	133	—	276	—	47	21.4	2.1	10.52
1996–97	118	—	222	—	54	18.7	1.9	13.01
1997–98	98	—	271	—	83	12.1	2.7	6.59
1998–99	135	—	318	—	117	8.5	2.4	16.96
1999–00	177	—	433	—	64	15.5	2.4	13.04
2000–01	189	—	450	—	147	6.8	2.4	17.18
2001–02	137	—	275	—	288	3.5	2.0	15.60
2002–03	234	—	541	—	165	6.0	2.3	13.73
2003–04	223	—	453	—	341	2.9	2.0	18.72
2004–05	203	—	432	—	184	5.4	2.1	13.66
2005–06	70	—	120	—	324	3.1	1.7	15.02
2006–07	187	—	—	—	—	—	—	18.07
2007–08	171	—	275	—	98	10.2	1.6	14.14
2008–09	146	—	287	—	282	3.5	2.0	17.41
2009–10	78	196	138	—	113	8.8	1.8	19.34
2010–11	115	115	194	—	35	28.5	1.7	17.27
2011–12	110	82	46	89	120	8.3	0.4	20.44
2012–13	99	147	117	38	163	6.1	1.2	17.36
2013–14	91	216	98	57	180	5.5	1.1	15.73
2014–15	92	297	89	32	183	5.5	1.0	11.69
2015–16	103	464	140	44	384	2.6	0.9	7.63
2016–17	78	222	233	31	37	27.1	3.0	10.28
2017–18	91	145	79	68	119	8.4	0.9	6.51
2018–19	85	115	161	93	101	9.9	3.0	9.30
2019–20	60	99	93	35	61	16.5	2.1	18.12
2020–21	91	137	98	72	105	9.5	1.9	—
Average	147	186	294	56	142	10.1	2.0	12.06

\*Trappers and badgers per trapper include hunters and their harvest. Set-days per badger and badgers per 1000 set-days are based only on trapping activity, and do not include hunt harvest or hunter-days afield.

Statewide badger harvest trends, Utah 1982–2021.



Badger trapping harvest statistics by county and ecoregion, Utah 2020–2021.

County	n	Trappers afield	Trap harvest	Traps set	Trapping days	Set-days	Set-days / badger	Badgers / 1000 set-days	Badgers / trapper
Beaver	1	3	0	0	3	0	—	—	0.0
Box Elder	0	0	—	—	—	—	—	—	—
Iron	1	3	0	23	20	137	—	0.0	0.0
Juab	1	3	23	46	52	730	32	31.3	7.0
Millard	1	3	3	39	98	1173	360	2.8	1.0
Tooele	1	3	10	20	98	587	60	16.7	3.0
Great Basin totals	5	16	36	127	270	2626	73	13.6	2.2
Cache	0	0	—	—	—	—	—	—	—
Davis	0	0	—	—	—	—	—	—	—
Morgan	1	3	3	20	94	567	174	5.7	1.0
Piute	0	0	—	—	—	—	—	—	—
Rich	0	0	—	—	—	—	—	—	—
Salt Lake	0	0	—	—	—	—	—	—	—
Sanpete	3	10	23	46	166	1385	61	16.5	2.3
Sevier	0	0	—	—	—	—	—	—	—
Summit	1	3	10	29	101	909	93	10.8	3.0
Utah	0	0	—	—	—	—	—	—	—
Wasatch	1	3	0	29	98	880	—	0.0	0.0
Weber	0	0	—	—	—	—	—	—	—
Rocky Mountain totals	6	20	36	124	459	3741	104	9.6	1.8
Daggett	1	3	0	23	26	182	—	0.0	0.0
Duchesne	0	0	—	—	—	—	—	—	—
Uintah	0	0	—	—	—	—	—	—	—
Uintah Basin totals	1	3	0	23	26	182	—	0.0	0.0
Carbon	1	3	0	7	33	65	—	0.0	0.0
Emery	0	0	—	—	—	—	—	—	—
Garfield	0	0	—	—	—	—	—	—	—
Grand	0	0	—	—	—	—	—	—	—
Kane	2	7	23	163	160	3649	160	6.3	3.5
San Juan	0	0	—	—	—	—	—	—	—
Washington	0	0	—	—	—	—	—	—	—
Wayne	0	0	—	—	—	—	—	—	—
Colorado Plateau totals	3	10	23	169	192	3715	163	6.1	2.3
Unknown	1	3	3	3	7	7	2	500.0	1.0
Statewide totals*	15	49	98	446	955	10270	105	9.5	2.0

\*Statewide totals for sample size and trappers afield are not totals of the columns because trappers trapped multiple counties.

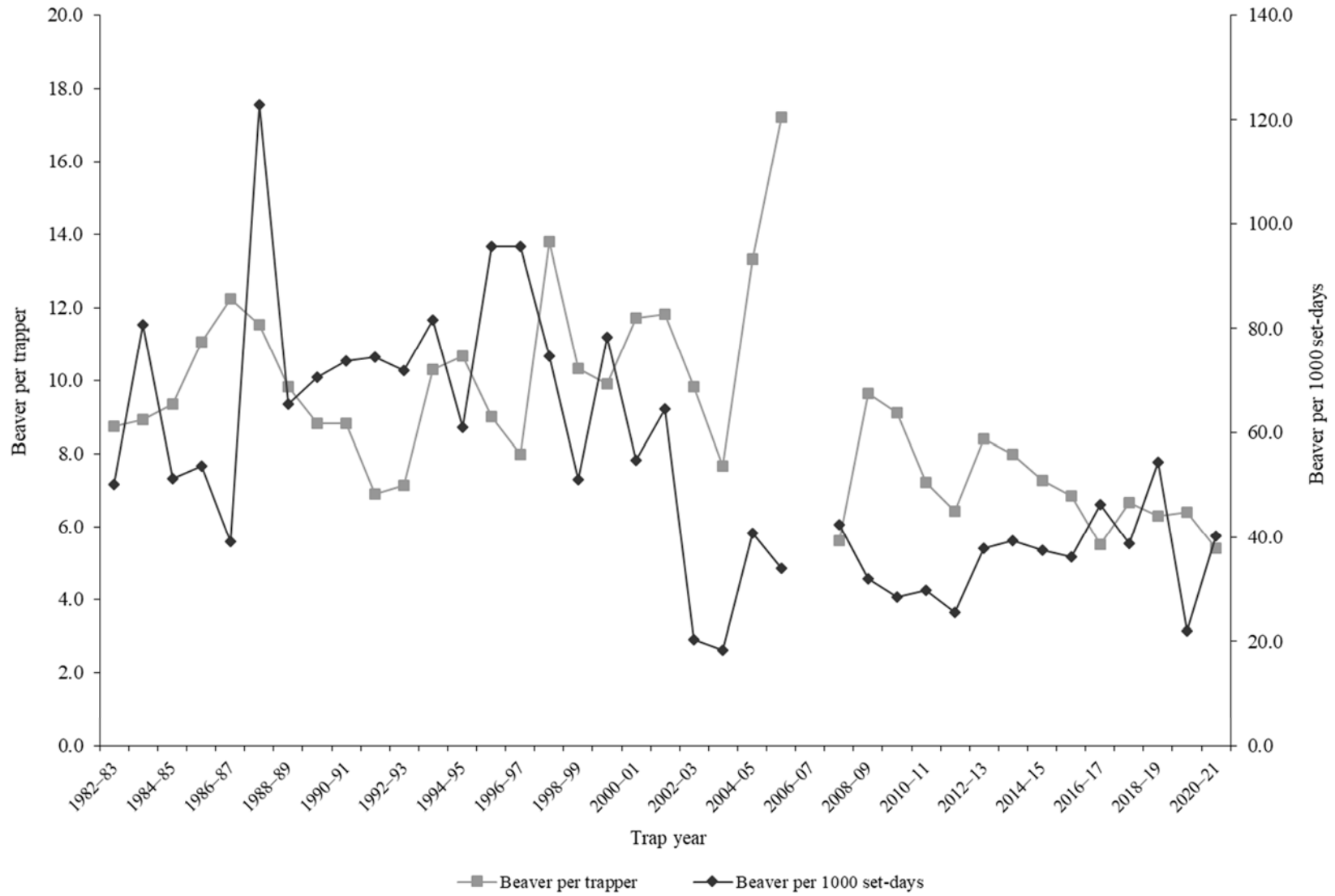
# BEAVER

Statewide beaver harvest statistics\*, Utah 1982–2021.

Trap year	Trappers afield	Incidental harvest	Trap harvest	Hunt harvest	Set-days / beaver	Beavers / 1000 set-days	Beavers / trapper	Pelt price (\$)
1982–83	181	—	1584	—	20	50.1	8.8	12.89
1983–84	200	—	1788	—	12	80.8	8.9	14.10
1984–85	285	—	2664	—	20	51.3	9.3	16.44
1985–86	293	—	3242	—	19	53.7	11.1	14.64
1986–87	338	—	4138	—	26	39.2	12.2	22.64
1987–88	409	—	4716	—	8	122.9	11.5	14.67
1988–89	277	—	2721	—	15	65.4	9.8	10.02
1989–90	390	—	3436	—	14	70.5	8.8	11.93
1990–91	176	—	1551	—	14	73.8	8.8	6.49
1991–92	216	—	1492	—	13	74.5	6.9	8.94
1992–93	134	—	956	—	14	71.9	7.1	7.74
1993–94	171	—	1761	—	12	81.6	10.3	9.59
1994–95	239	—	2551	—	16	61.0	10.7	12.65
1995–96	170	—	1530	—	10	95.7	9.0	13.40
1996–97	163	—	1299	—	10	95.7	8.0	21.15
1997–98	210	—	2896	—	13	74.6	13.8	13.58
1998–99	286	—	2950	—	20	51.0	10.3	9.37
1999–00	185	—	1830	—	13	78.4	9.9	10.98
2000–01	170	—	1992	—	18	54.7	11.7	10.32
2001–02	143	—	1689	—	16	64.5	11.8	10.85
2002–03	175	—	1720	—	49	20.3	9.8	9.47
2003–04	232	—	1781	—	55	18.2	7.7	14.10
2004–05	200	—	2664	—	25	40.7	13.3	13.91
2005–06	130	—	2239	—	29	33.9	17.2	17.75
2006–07	122	—	—	—	—	—	—	16.31
2007–08	133	—	745	—	24	42.5	5.6	17.50
2008–09	121	—	1165	—	31	31.9	9.6	13.15
2009–10	209	6	1904	—	35	28.5	9.1	11.60
2010–11	144	13	1039	—	34	29.8	7.2	12.76
2011–12	157	18	1008	—	39	25.4	6.4	15.61
2012–13	267	17	2245	14	26	37.9	8.4	20.26
2013–14	240	98	1913	10	25	39.3	8.0	14.33
2014–15	183	47	1332	9	27	37.5	7.3	11.60
2015–16	217	22	1486	4	28	36.1	6.8	7.46
2016–17	176	3	970	0	22	46.3	5.5	11.20
2017–18	141	5	940	0	26	38.8	6.7	6.34
2018–19	113	9	645	87	18	54.4	6.3	—
2019–20	138	81	863	6	46	21.9	6.4	9.15
2020–21	176	10	909	10	25	40.3	5.4	—
Average	203	27	1904	16	23	53.5	9.1	12.83

\*Trappers and beavers per trapper include hunters and their harvest. Set-days per beaver and beavers per 1000 set-days are based only on trapping activity, and do not include hunt harvest or hunter-days afield

Statewide beaver harvest trends, Utah 1982–2021.





Beaver trapping harvest statistics by county and ecoregion, Utah 2020–2021.

County	n	Trappers afield	Trap harvest	Traps set	Trapping days	Set-days	Set-days / beaver	Beavers / 1000 set-days	Beavers / trapper
Beaver	1	3	3	10	26	78	24.0	41.7	1.0
Box Elder	3	10	20	55	78	495	25.3	39.5	2.0
Iron	0	0	—	—	—	—	—	—	—
Juab	0	0	—	—	—	—	—	—	—
Millard	0	0	—	—	—	—	—	—	—
Tooele	0	0	—	—	—	—	—	—	—
Great Basin totals	4	13	23	65	104	573	25.1	39.8	1.8
Cache	8	26	186	163	606	3333	17.9	55.7	7.1
Davis	1	3	16	20	13	78	4.8	208.3	5.0
Morgan	2	7	46	42	111	691	15.1	66.0	7.0
Piute	2	7	104	147	196	4399	42.2	23.7	16.0
Rich	3	10	42	59	241	1447	34.2	29.3	4.3
Salt Lake	0	0	—	—	—	—	—	—	—
Sanpete	3	10	23	62	176	978	42.9	23.3	2.3
Sevier	1	3	7	20	16	98	15.0	66.7	2.0
Summit	4	13	42	23	78	150	3.5	282.6	3.3
Utah	9	29	176	176	987	5559	31.6	31.7	6.0
Wasatch	2	7	29	20	16	42	1.4	692.3	4.5
Weber	6	20	94	98	290	2111	22.3	44.8	4.8
Rocky Mountain totals	41	134	766	828	2731	18886	24.7	40.5	5.7
Daggett	0	0	—	—	—	—	—	—	—
Duchesne	4	13	36	49	371	1101	30.7	32.5	2.8
Uintah	2	7	16	23	36	140	8.6	116.3	2.5
Uintah Basin totals	6	20	52	72	407	1241	23.8	42.0	2.7
Carbon	1	3	13	7	46	91	7.0	142.9	4.0
Emery	1	3	16	33	98	978	60.0	16.7	5.0
Garfield	0	0	—	—	—	—	—	—	—
Grand	1	3	7	13	10	39	6.0	166.7	2.0
Kane	0	0	—	—	—	—	—	—	—
San Juan	0	0	—	—	—	—	—	—	—
Washington	1	3	33	42	59	762	23.4	42.7	10.0
Wayne	0	0	—	—	—	—	—	—	—
Colorado Plateau totals	4	13	68	94	212	1870	27.3	36.6	5.3
Unknown	0	0	—	—	—	—	—	—	—
Statewide totals*	52	169	909	1059	3454	22571	24.8	40.3	5.4

\*Statewide totals for sample size and trappers afield are not totals of the columns because trappers trapped multiple counties.

# BOBCAT

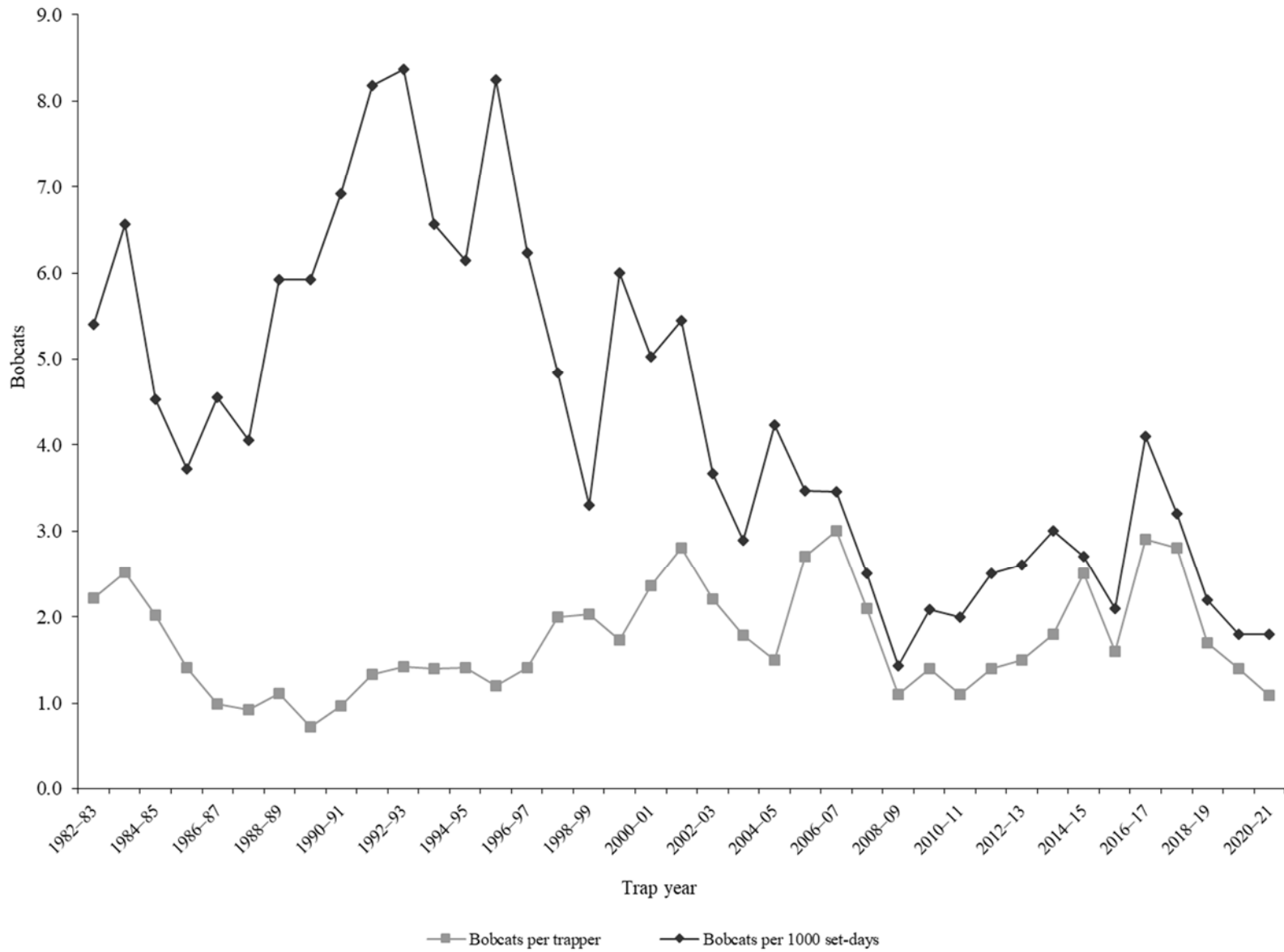
Statewide bobcat trapping harvest statistics, Utah 1982–2021.

Trap year	Trappers afield	Trap harvest	Set-days	Set-days / bobcat	Bobcats / 1000 set-days	Bobcats / trapper	Pelt price (\$)
1982–83	1145	2540	469979	185	5.4	2.2	171.00
1983–84	1050	2640	401841	152	6.6	2.5	189.00
1984–85	1253	2532	559480	221	4.5	2.0	202.00
1985–86	1083	1530	411493	269	3.7	1.4	197.00
1986–87	1036	1024	224778	220	4.6	1.0	309.00
1987–88	1108	1023	252680	247	4.0	0.9	245.00
1988–89	941	1042	175990	169	5.9	1.1	221.00
1989–90	1167	843	142360	169	5.9	0.7	102.00
1990–91	542	527	76218	145	6.9	1.0	87.00
1991–92	726	968	118293	122	8.2	1.3	104.00
1992–93	827	1171	139949	120	8.4	1.4	90.00
1993–94	900	1256	191367	152	6.6	1.4	118.60
1994–95	914	1293	210522	163	6.1	1.4	70.02
1995–96	749	896	108594	121	8.3	1.2	79.51
1996–97	615	866	138899	160	6.2	1.4	147.80
1997–98	619	1234	255147	207	4.8	2.0	60.89
1998–99	1031	2092	633774	303	3.3	2.0	55.86
1999–00	828	1430	238152	167	6.0	1.7	82.64
2000–01	852	2008	399609	199	5.0	2.4	93.56
2001–02	666	1866	342678	184	5.4	2.8	147.66
2002–03	984	2176	593692	273	3.7	2.2	270.33
2003–04	1133	2027	701383	346	2.9	1.8	203.17
2004–05	1300	1954	462019	236	4.2	1.5	221.65
2005–06	979	2625	757380	289	3.5	2.7	358.56
2006–07	1017	3037	877870	289	3.5	3.0	197.53
2007–08	985	2091	836519	400	2.5	2.1	388.43
2008–09	1630	1796	1258813	701	1.4	1.1	238.69
2009–10	717	1017	488709	481	2.1	1.4	223.71
2010–11	771	846	416474	492	2.0	1.1	368.95
2011–12	755	1094	437912	400	2.5	1.4	456.16
2012–13	836	1214	475902	392	2.6	1.5	560.96
2013–14	953	1690	562430	333	3.0	1.8	407.44
2014–15	1105	2776	1036043	373	2.7	2.5	223.11
2015–16	982	1543	739720	479	2.1	1.6	151.63
2016–17	571	1657	402966	243	4.1	2.9	273.23
2017–18	957	2683	833255	311	3.2	2.8	236.45
2018–19	796	1372	611330	446	2.2	1.7	388.43
2019–20	701	1007	553322	550	1.8	1.4	264.14
2020–21	762	833	454600	546	1.8	1.1	—
Average	923	1595	461337	289	4.3	1.7	215.95

Statewide bobcat hunting harvest statistics, Utah 2005–2021.

Trap year	Hunters afield	Hunt harvest	Hunter-days afield	Hunter-days / bobcat	Bobcats / hunter
2005–06	612	301	8194	27	0.5
2006–07	440	340	10408	31	0.8
2007–08	557	346	10089	29	0.6
2008–09	438	266	7360	28	0.6
2009–10	370	150	5253	35	0.4
2010–11	355	156	5888	38	0.4
2011–12	329	151	4146	28	0.5
2012–13	206	151	2739	18	0.7
2013–14	182	180	2901	16	1.0
2014–15	305	143	4203	29	0.5
2015–16	298	140	3819	27	0.5
2016–17	267	199	3446	17	0.7
2017–18	341	262	4620	18	0.8
2018–19	211	280	2832	10	1.3
2019–20	243	166	3330	20	0.7
2020–21	242	178	2970	17	0.7
Average	319	207	4934	24	0.7

Statewide bobcat trapping harvest trends, Utah 1982–2021.



Bobcat trapping harvest statistics by county and ecoregion, Utah 2020–2021.

County	n	Trappers afield	Trap harvest**	Traps set	Trapping days	Set-days	Set-days / bobcat	Bobcats / 1000 set-days	Bobcats / trapper
Beaver	14	50	41	3281	719	56047	1367.0	0.7	0.8
Box Elder	8	28	33	915	342	12787	387.5	2.6	1.2
Iron	13	46	25	2089	520	31375	1255.0	0.8	0.5
Juab	17	60	59	2253	726	33758	572.2	1.7	1.0
Millard	10	36	27	1388	317	14409	533.7	1.9	0.8
Tooele	12	43	14	1829	249	15455	1103.9	0.9	0.3
Great Basin totals	74	263	199	11754	2872	163830	823.3	1.2	0.8
Cache	5	18	5	423	82	1915	383.0	2.6	0.3
Davis	4	14	0	459	96	1836	—	0.0	0.0
Morgan	3	11	14	121	206	3811	272.2	3.7	1.3
Piute	6	21	4	598	260	12071	3017.8	0.3	0.2
Rich	5	18	3	925	327	16847	5615.7	0.2	0.2
Salt Lake	1	4	3	107	28	854	284.7	3.5	0.8
Sanpete	6	21	11	1039	174	10374	943.1	1.1	0.5
Sevier	19	68	77	2375	826	35766	464.5	2.2	1.1
Summit	7	25	12	1001	302	15108	1259.0	0.8	0.5
Utah	14	50	27	1715	502	23473	869.4	1.2	0.5
Wasatch	4	14	8	708	110	6751	843.9	1.2	0.6
Weber	1	4	5	50	14	199	39.8	25.1	1.3
Rocky Mountain totals	75	267	169	9522	2929	129005	763.3	1.3	0.6
Daggett	3	11	9	214	53	475	52.8	18.9	0.8
Duchesne	17	60	67	2209	501	21193	316.3	3.2	1.1
Uintah	16	57	78	2712	609	33405	428.3	2.3	1.4
Uintah Basin totals	36	128	154	5134	1162	55073	357.6	2.8	1.2
Carbon	7	25	34	377	270	5947	174.9	5.7	1.4
Emery	4	14	16	267	100	4014	250.9	4.0	1.1
Garfield	9	32	40	1655	384	21651	541.3	1.8	1.3
Grand	4	14	11	441	285	13003	1182.1	0.8	0.8
Kane	9	32	64	776	491	14341	224.1	4.5	2.0
San Juan	9	32	48	1100	285	11954	249.0	4.0	1.5
Washington	15	53	83	1972	669	29583	356.4	2.8	1.6
Wayne	1	4	15	100	43	1196	79.7	12.5	3.8
Colorado Plateau totals	58	206	311	6687	2527	101689	327.0	3.1	1.5
Unknown	3	11	0	256	228	5003	—	0.0	0.0
Statewide totals*	214	762	833	33352	9718	454600	545.7	1.8	1.1

\*Statewide totals for sample size and trappers afield are not totals of the columns because trappers trapped multiple counties.

\*\*Total harvest numbers are from pelt check-in, while numbers of trappers afield and effort are determined from harvest survey.

Bobcat hunting harvest statistics by county and ecoregion, Utah 2020–2021.

County	n	Hunters afield	Hunt harvest**	Hunter-days afield	Hunter-days / bobcat	Bobcats / hunter
Beaver	4	14	6	75	12.5	0.4
Box Elder	6	21	13	153	11.8	0.6
Iron	5	18	1	89	89.0	0.1
Juab	5	18	5	139	27.8	0.3
Millard	4	14	10	60	6.0	0.7
Tooele	10	36	5	598	119.6	0.1
Great Basin totals	34	121	40	1114	27.9	0.3
Cache	4	14	4	235	58.8	0.3
Davis	0	0	—	—	—	—
Morgan	2	7	7	85	12.1	1.0
Piute	0	0	2	0	0.0	—
Rich	1	4	7	7	1.0	1.8
Salt Lake	1	4	1	14	14.0	0.3
Sanpete	2	7	14	43	3.1	2.0
Sevier	3	11	8	57	7.1	0.7
Summit	2	7	9	21	2.3	1.3
Utah	16	57	21	356	17.0	0.4
Wasatch	2	7	12	114	9.5	1.7
Weber	2	7	2	57	28.5	0.3
Rocky Mountain totals	35	125	87	989	11.4	0.7
Daggett	1	4	3	7	2.3	0.8
Duchesne	4	14	11	82	7.5	0.8
Uintah	5	18	16	103	6.4	0.9
Uintah Basin totals	10	36	30	192	6.4	0.8
Carbon	3	11	4	60	15.0	0.4
Emery	2	7	1	32	32.0	0.1
Garfield	0	0	8	0	0.0	—
Grand	2	7	1	25	25.0	0.1
Kane	1	4	0	71	—	0.0
San Juan	5	18	4	324	81.0	0.2
Washington	3	11	2	71	35.5	0.2
Wayne	3	11	1	60	60.0	0.1
Colorado Plateau totals	19	68	21	643	30.6	0.3
Unknown	2	7	0	32	—	0.0
Statewide totals*	68	242	178	2970	16.7	0.7

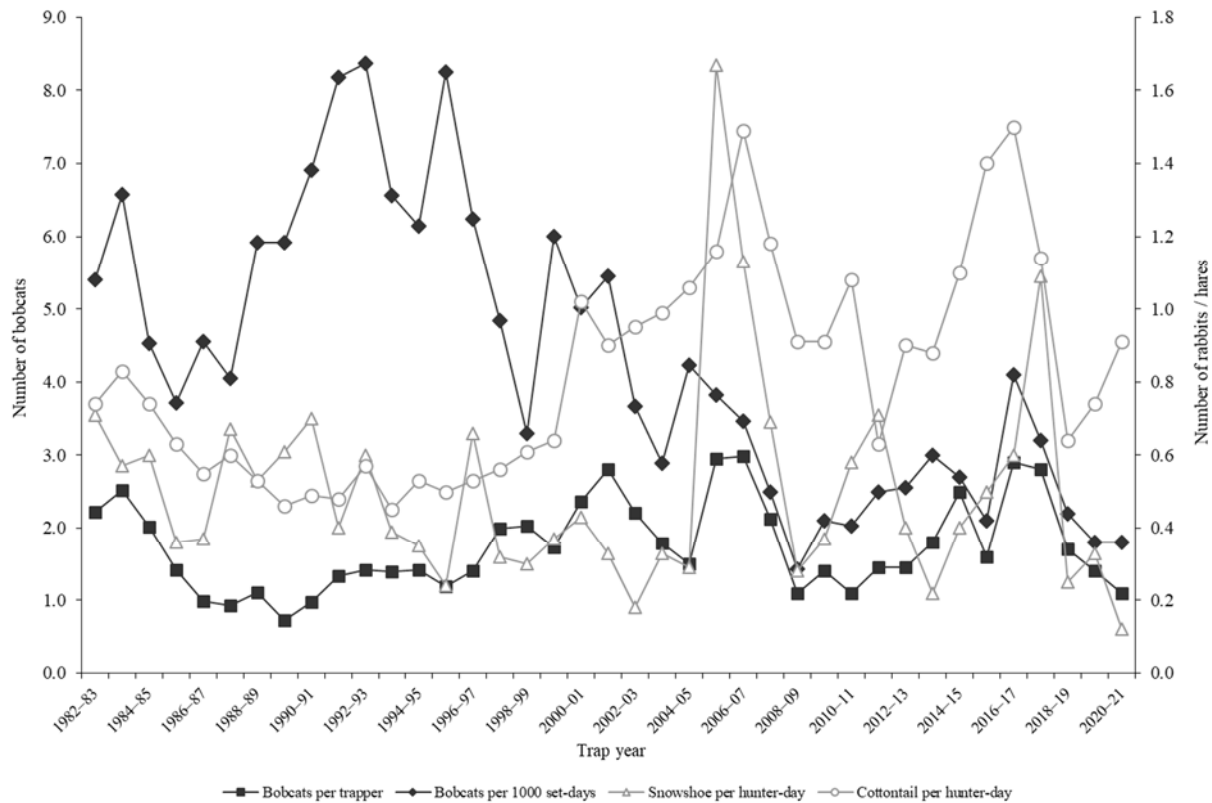
\*Statewide totals for sample size and hunters afield are not totals of the columns because hunters hunted multiple counties.

\*\*Total harvest numbers are from pelt check-in, while numbers of hunters afield and effort are determined from harvest survey.

## Prey index

Lagomorph densities are generally considered to be a good indicator of bobcat recruitment and survival because high lagomorph populations provide an essential prey base for dispersing bobcats. When lagomorph populations are high or increasing, the bobcat population has also increased or at least remained stable. Thus, low populations of lagomorphs will reduce the likelihood of younger bobcats surviving to the next year. Cottontail rabbit and snowshoe hare data are taken from the Utah Upland Game Annual Report 2020–21 (2020–21 seasons).

Relationships in harvest statistics between bobcat and prey, Utah 1982–2021.



## Population trends

### Bobcat harvest age and sex ratios, Utah 1985–2021.

Trap year	Kittens / adult female	Kittens / adult	Male kittens / female kittens	Juveniles / adult	Juv. males / juv. females	Proportion juveniles in harvest	Proportion females in harvest	Males / females
1985–86	0.5	0.2	1.0	—	—	—	—	1.2
1986–87	0.7	0.3	0.9	—	—	—	—	1.1
1987–88	1.2	0.5	1.0	—	—	—	—	1.1
1988–89	1.1	0.4	1.1	—	—	—	—	1.3
1989–90	0.8	0.3	1.0	—	—	—	—	1.4
1990–91	0.8	0.3	0.6	—	—	—	—	1.2
1991–92	0.9	0.7	1.3	—	—	—	—	1.5
1992–93	0.9	1.0	1.2	—	—	—	—	1.4
1993–94	1.6	0.6	1.0	—	—	—	—	1.3
1994–95	0.6	0.6	1.1	0.6	1.1	0.36	0.44	1.3
1995–96	1.4	0.5	0.7	0.5	1.0	0.35	0.44	1.3
1996–97	1.9	0.7	1.1	0.7	1.1	0.41	0.41	1.4
1997–98	1.2	0.4	0.9	0.4	0.9	0.30	0.42	1.4
1998–99	2.1	0.8	1.1	—	—	—	—	1.3
1999–00	0.8	0.3	1.0	1.0	1.4	0.50	0.39	1.6
2000–01	0.7	0.3	1.1	0.9	1.3	0.47	0.39	1.6
2001–02	0.4	0.2	1.0	0.6	1.2	0.38	0.41	1.4
2002–03	0.4	0.2	0.9	0.4	1.0	0.28	0.45	1.2
2003–04	0.6	0.3	0.9	0.5	1.0	0.31	0.47	1.1
2004–05	0.8	0.3	0.8	1.2	1.1	0.55	0.44	1.3
2005–06	5.8	2.5	1.4	2.5	1.4	0.72	0.43	1.4
2006–07	4.1	1.5	1.4	1.5	1.4	0.60	0.43	1.3
2007–08	3.0	1.3	1.1	1.4	1.1	0.56	0.43	1.3
2008–09	0.4	0.2	0.8	0.7	1.0	0.42	0.45	1.2
2009–10	0.7	0.3	1.0	0.6	1.2	0.38	0.47	1.1
2010–11	0.6	0.2	1.1	0.5	1.2	0.31	0.43	1.4
2011–12	0.8	0.3	1.1	0.5	1.2	0.35	0.45	1.2
2012–13	0.6	0.3	0.9	0.5	0.9	0.35	0.48	1.1
2013–14	0.9	0.4	0.9	0.8	0.9	0.46	0.45	1.2
2014–15	1.6	0.8	1.0	1.5	1.2	0.60	0.45	1.2
2015–16	1.4	0.6	0.9	1.6	1.4	0.62	0.44	1.3
2016–17	1.4	0.6	0.9	1.8	1.3	0.64	0.41	1.5
2017–18	0.7	0.3	0.7	1.1	1.1	0.52	0.45	1.2
2018–19	0.2	0.1	0.9	0.6	1.2	0.36	0.48	1.1
2019–20	0.4	0.2	0.9	0.4	0.9	0.28	0.44	1.3
2020–21	1.0	0.4	0.5	0.7	0.7	0.42	0.46	1.2
Average	1.2	0.5	1.0	0.9	1.1	0.44	0.44	1.3

In annual reports prior to 2005–06, the "juvenile" age category referred only to kittens (age 0.5) while "adults" included all bobcats age 1.5 and older. Beginning with the 2005–06 annual report, the term "juvenile" now refers to kittens and yearlings (ages 0.5–1.5), while "adult" includes all bobcats age 2.5 and older.

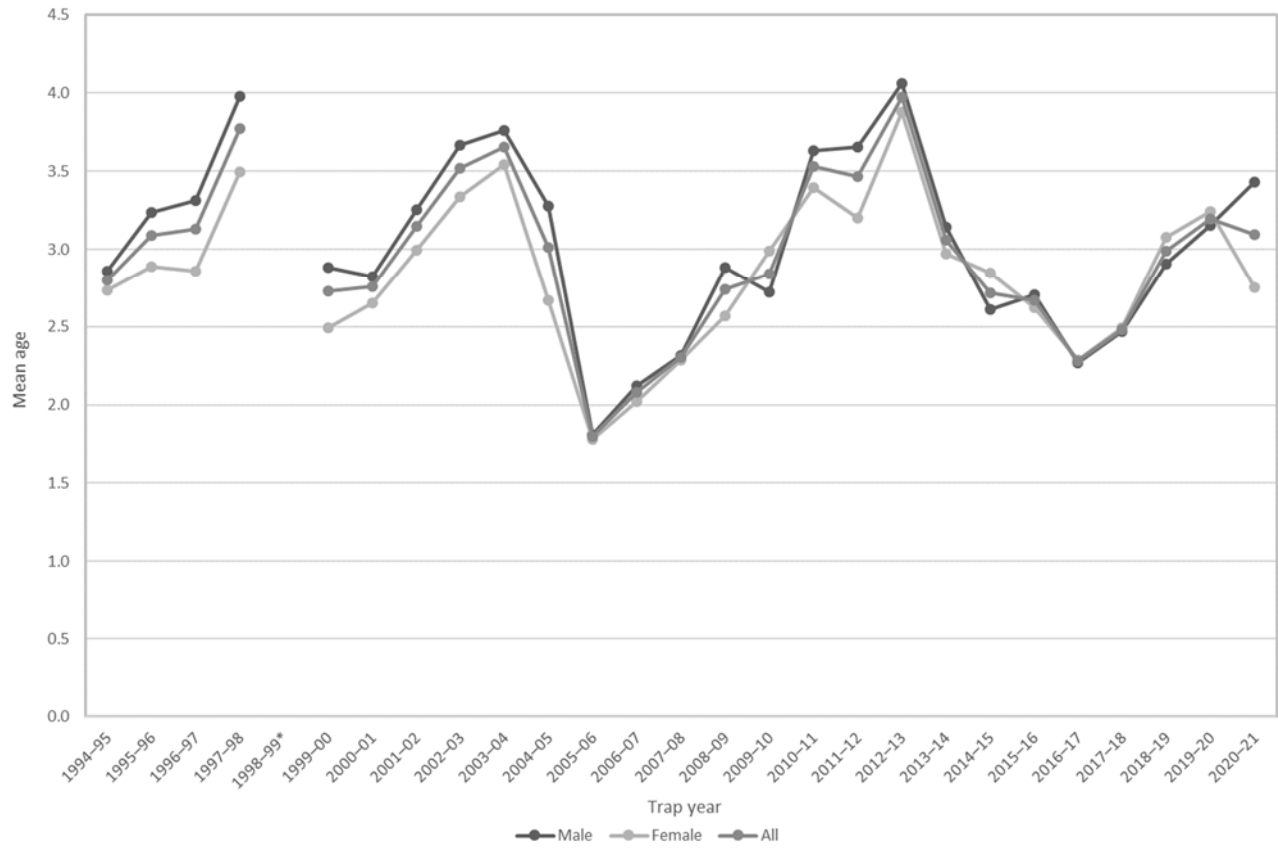


Adult bobcat survival (from Chapman-Robson estimator), Utah 1985–2021.

Trap year	Survival (%)	95% confidence interval	Chi-square value, degrees of freedom
1985–86	63	60–65	13.2, 9df
1986–87	63	60–65	34.1, 9df
1987–88	65	61–68	19.9, 9df
1988–89	64	60–68	17.3, 8df
1989–90	67	63–71	19.4, 8df
1990–91	58	53–62	28.5, 12df
1991–92	58	55–60	47.9, 14df
1992–93	59	56–63	19.9, 12df
1993–94	54	52–57	34.2, 11df
1994–95	57	54–59	17.2, 14df
1995–96	64	61–66	40.0, 11df
1996–97	68	65–70	23.4, 12df
1997–98	71	69–74	19.1, 14df
1998–99	71	70–73	35.2, 13df
1999–00	66	64–68	41.0, 15df
2000–01	64	62–66	86.0, 11df
2001–02	65	63–67	87.3, 14df
2002–03	67	65–68	175.5, 13df
2003–04	71	70–72	245.6, 12df
2004–05	74	73–76	83.9, 15df
2005–06	68	65–70	15.7, 12df
2006–07	53	48–58	41.9, 9df
2007–08	58	54–62	63.6, 12df
2008–09	57	54–61	64.5, 14df
2009–10	59	56–62	60.1, 12df
2010–11	69	66–71	90.0, 13df
2011–12	70	66–73	22.7, 13df
2012–13	75	72–78	87.2, 11df
2013–14	70	66–74	52.8, 12df
2014–15	74	71–77	62.2, 13df
2015–16	73	70–76	66.6, 13df
2016–17	65	61–68	93.1, 10df
2017–18	57	53–61	89.8, 11df
2018–19	59	55–63	42.8, 12df
2019–20	60	57–64	16.4, 11df
2020–21	68	65–72	52.9, 12df
Average	65	—	—

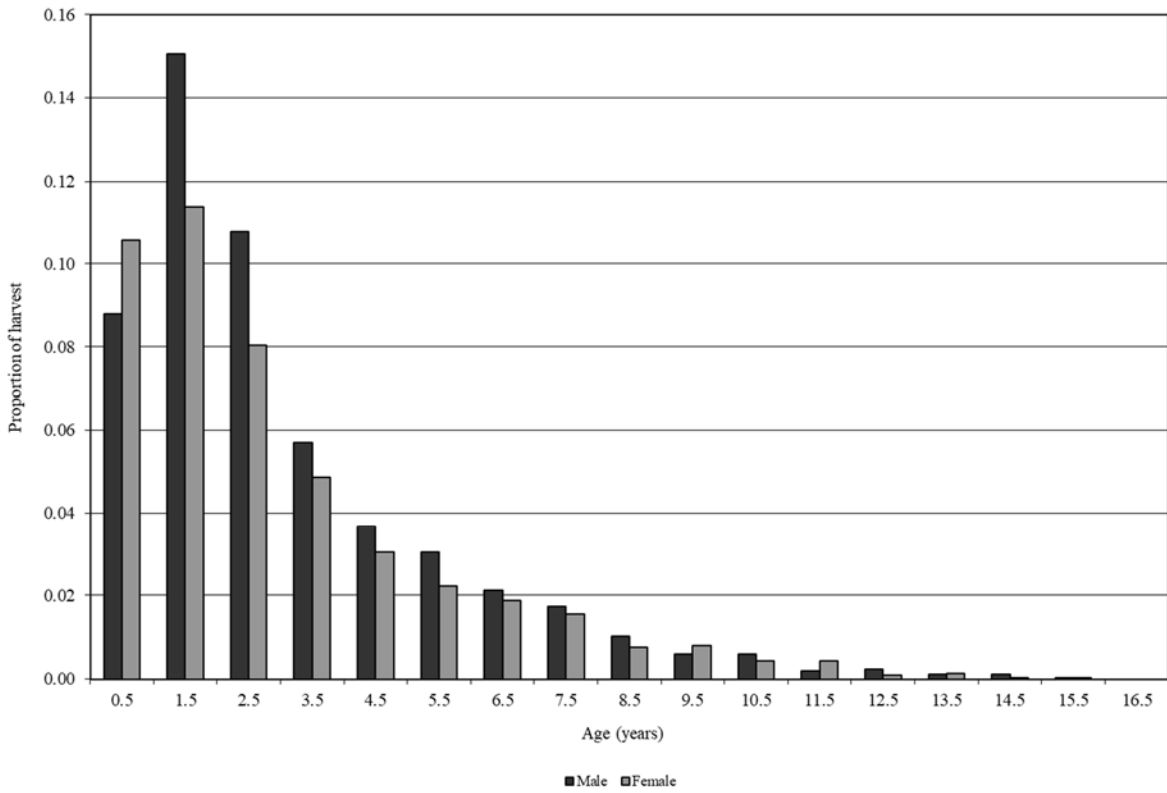
## Age structure

Average age of harvested bobcats, Utah 1999–2021.

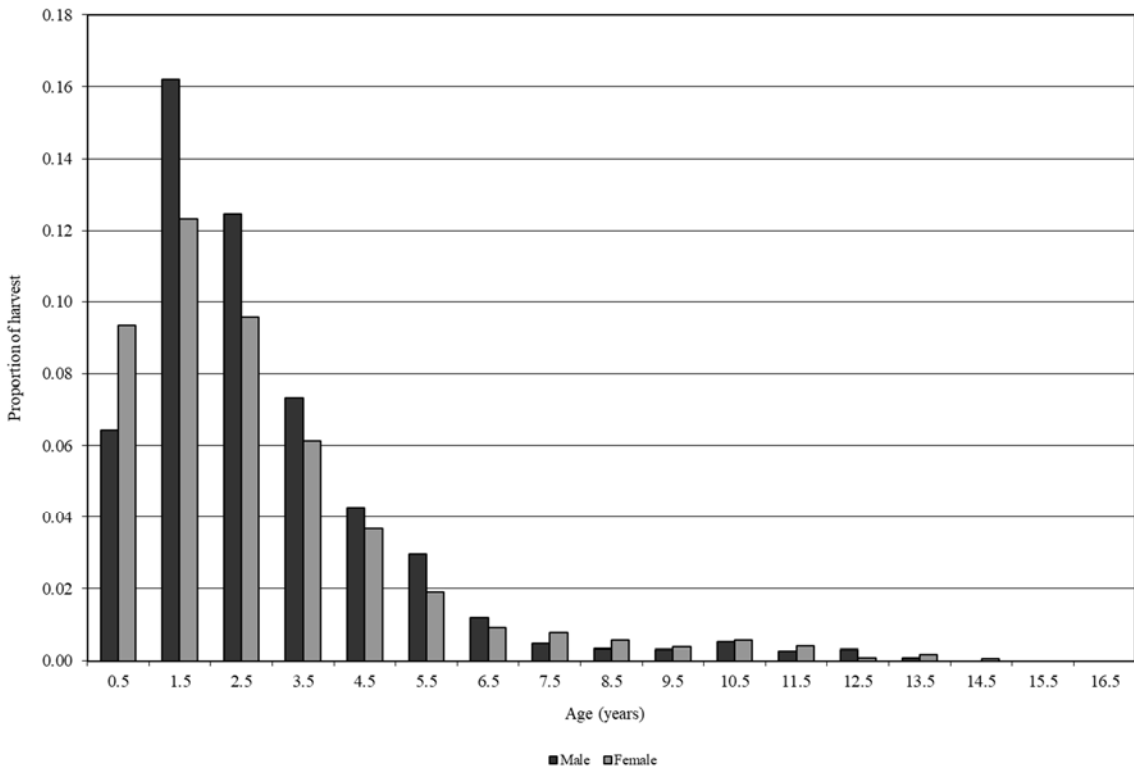


\*Excludes age structure data from the 1998–99 trap season.

Average proportion of bobcats harvested by age category, Utah 2011–2021.



Age structure of harvested bobcats, Utah 2016–2021.



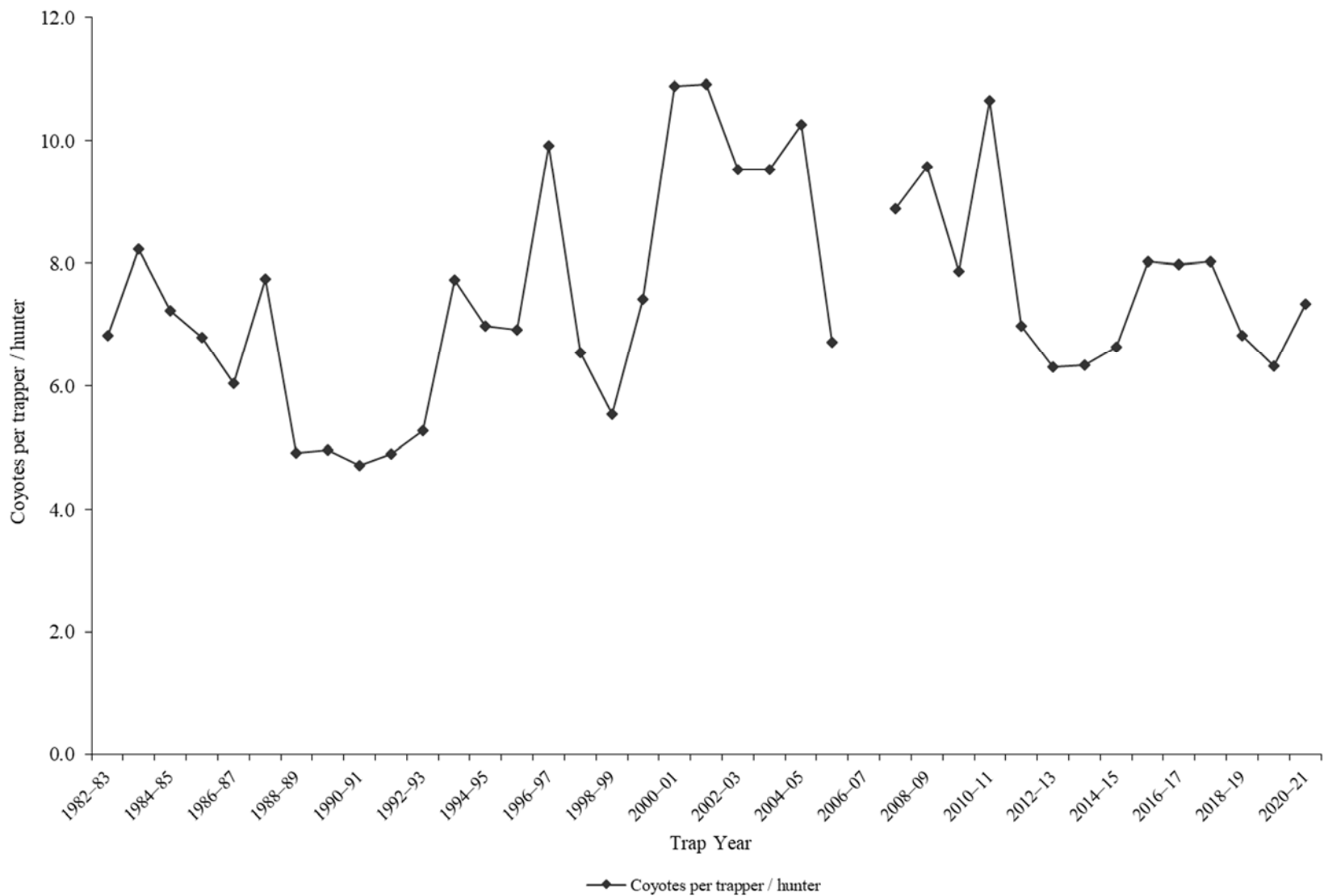
# COYOTE

Statewide coyote harvest statistics, Utah 1982–2021.

Trap year	Trappers / hunters afield	Wildlife Services harvest	Incidental harvest	Trap harvest	Hunt harvest	Coyotes per trapper / hunter*	Pelt price (\$)
1982–83	841	4130	—	5738	—	6.8	35.42
1983–84	715	5063	—	5878	—	8.2	25.92
1984–85	828	5427	—	5991	—	7.2	32.35
1985–86	714	5045	—	4851	—	6.8	19.65
1986–87	819	4116	—	4947	—	6.0	33.64
1987–88	893	4338	—	6919	—	7.7	15.55
1988–89	652	4853	—	3200	—	4.9	8.47
1989–90	671	5168	—	3331	—	5.0	8.68
1990–91	389	4444	—	1831	—	4.7	11.41
1991–92	664	4347	—	3255	—	4.9	20.00
1992–93	695	4932	—	3666	—	5.3	15.75
1993–94	679	5827	—	5247	—	7.7	24.58
1994–95	754	3893	—	5267	—	7.0	12.51
1995–96	632	4165	—	4372	—	6.9	15.49
1996–97	405	4484	—	4017	—	9.9	18.73
1997–98	494	4169	—	3228	—	6.5	10.80
1998–99	782	3464	—	4337	—	5.5	10.80
1999–00	473	4534	—	3510	—	7.4	19.14
2000–01	456	4275	—	4966	—	10.9	14.39
2001–02	399	3874	—	4354	—	10.9	16.17
2002–03	572	3394	—	5446	—	9.5	32.62
2003–04	699	3897	—	6660	—	9.5	25.74
2004–05	699	4125	—	7173	—	10.3	20.10
2005–06	630	4820	328	1190	3039	6.7	30.45
2006–07	830	5041	—	—	—	—	26.37
2007–08	859	5618	821	4055	3582	8.9	21.74
2008–09	726	3909	1020	3963	2982	9.6	10.86
2009–10	781	3808	531	3188	2955	7.9	14.80
2010–11	736	4081	292	4356	3480	10.6	25.00
2011–12	705	3444	374	3054	1868	7.0	43.43
2012–13	881	3349	192	3269	2288	6.3	39.56
2013–14	864	2605	312	3162	2310	6.3	37.39
2014–15	971	3099	424	4118	2331	6.6	45.88
2015–16	977	3961	166	4801	3034	8.0	29.63
2016–17	607	3473	285	2244	2595	8.0	37.26
2017–18	635	3024	164	2584	2511	8.0	37.31
2018–19	493	3911	226	1728	1636	6.8	56.31
2019–20	531	3839	126	1793	1565	6.3	76.66
2020–21	828	3871	270	3076	3004	7.3	—
Average	692	4200	369	4073	2612	7.5	25.80

\*Coyotes per trapper / hunter does not include Wildlife Services harvest.

Statewide coyote harvest trends, Utah 1982–2021.



Coyote trapping harvest statistics by county and ecoregion, Utah 2020–2021.

County	n	Trappers afield	Trap harvest	Traps set	Trapping days	Set-days	Set-days / coyote	Coyotes / 1000 set-days	Coyotes / trapper
Beaver	10	33	137	456	2616	46018	336.3	3.0	4.2
Box Elder	10	33	78	241	619	7885	100.8	9.9	2.4
Iron	10	33	111	440	968	16575	149.6	6.7	3.4
Juab	14	46	430	1153	1788	78363	182.2	5.5	9.4
Millard	8	26	169	222	1108	12584	74.3	13.5	6.5
Tooele	12	39	140	502	2395	32193	229.8	4.4	3.6
Great Basin totals	64	209	1065	3014	9494	193618	181.7	5.5	5.1
Cache	8	26	124	394	2131	25614	206.9	4.8	4.8
Davis	1	3	3	13	196	782	240.0	4.2	1.0
Morgan	3	10	68	169	290	4992	73.0	13.7	7.0
Piute	3	10	134	94	293	12252	91.7	10.9	13.7
Rich	7	23	319	639	1088	54747	171.4	5.8	14.0
Salt Lake	1	3	0	26	94	756	—	0.0	0.0
Sanpete	6	20	36	287	707	8871	247.5	4.0	1.8
Sevier	10	33	104	492	768	13917	133.5	7.5	3.2
Summit	6	20	91	277	433	10100	110.7	9.0	4.7
Utah	17	55	36	684	1812	37061	1034.0	1.0	0.6
Wasatch	1	3	36	117	147	5279	147.3	6.8	11.0
Weber	3	10	7	55	156	893	137.0	7.3	0.7
Rocky Mountain totals	66	215	958	3249	8115	175262	183.0	5.5	4.5
Daggett	1	3	0	26	0	0	—	—	0.0
Duchesne	12	39	127	311	2533	18700	147.2	6.8	3.3
Uintah	11	36	101	619	1831	58613	580.3	1.7	2.8
Uintah Basin totals	24	78	228	956	4364	77313	339.0	3.0	2.9
Carbon	4	13	0	117	111	1095	—	0.0	0.0
Emery	4	13	46	111	326	1750	38.4	26.1	3.5
Garfield	7	23	36	244	1212	10029	279.8	3.6	1.6
Grand	3	10	218	156	310	16188	74.1	13.5	22.3
Kane	3	10	91	212	342	8635	94.6	10.6	9.3
San Juan	9	29	140	355	1456	22160	158.2	6.3	4.8
Washington	12	39	270	727	1935	42727	158.0	6.3	6.9
Wayne	2	7	10	59	287	2268	232.0	4.3	1.5
Colorado Plateau totals	44	143	811	1981	5979	104851	129.2	7.7	5.7
Unknown	4	13	13	130	196	1955	150.0	6.7	1.0
Statewide totals*	173	564	3076	9330	28148	552999	179.8	5.6	5.5

\*Statewide totals for sample size and trappers afield are not totals of the columns because trappers trapped multiple counties.

Coyote hunting harvest statistics by county and ecoregion, Utah 2020–2021.

County	n	Hunters afield	Hunt harvest	Hunter-days afield	Hunter-days / coyote	Coyotes / hunter
Beaver	14	46	111	1246	11.2	2.4
Box Elder	15	49	427	1427	3.3	8.7
Iron	14	46	127	501	3.9	2.8
Juab	17	55	101	564	5.6	1.8
Millard	15	49	368	681	1.8	7.5
Tooele	18	59	339	1085	3.2	5.8
Great Basin totals	93	303	1473	5504	3.7	4.9
Cache	5	16	23	127	5.6	1.4
Davis	0	0	—	—	—	—
Morgan	2	7	7	36	5.5	1.0
Piute	3	10	33	150	4.6	3.3
Rich	5	16	153	127	0.8	9.4
Salt Lake	1	3	7	29	4.5	2.0
Sanpete	9	29	65	349	5.4	2.2
Sevier	6	20	104	248	2.4	5.3
Summit	4	13	26	453	17.4	2.0
Utah	21	68	78	512	6.5	1.1
Wasatch	2	7	16	7	0.4	2.5
Weber	1	3	0	3	—	0.0
Rocky Mountain totals	59	192	512	2040	4.0	2.7
Daggett	3	10	0	26	—	0.0
Duchesne	5	16	257	150	0.6	15.8
Uintah	6	20	36	98	2.7	1.8
Uintah Basin totals	14	46	293	274	0.9	6.4
Carbon	2	7	20	42	2.2	3.0
Emery	3	10	26	62	2.4	2.7
Garfield	5	16	52	508	9.8	3.2
Grand	3	10	205	1222	6.0	21.0
Kane	6	20	114	283	2.5	5.8
San Juan	4	13	137	485	3.5	10.5
Washington	10	33	143	284	2.0	4.4
Wayne	1	3	10	33	3.3	3.0
Colorado Plateau totals	34	111	707	2920	4.1	6.4
Unknown	5	16	20	143	7.3	1.2
Statewide totals*	135	440	3004	10880	3.6	6.8

\*Statewide totals for sample size and hunters afield are not totals of the columns because hunters hunted multiple counties.

## GRAY FOX

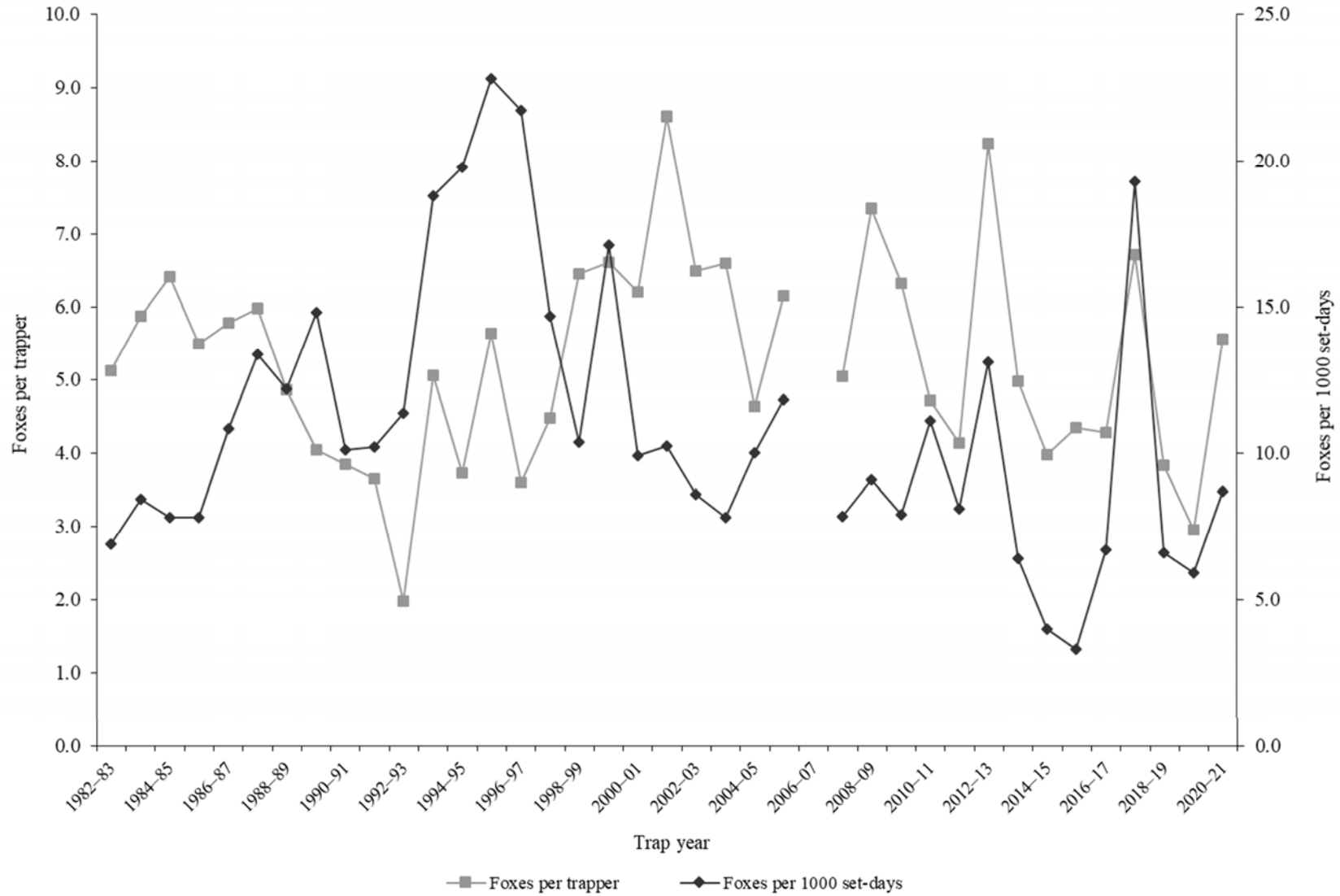
Statewide gray fox harvest statistics\*, Utah 1982–2021.

Trap year	Trappers afield	Incidental harvest	Trap harvest	Hunt harvest	Set-days / fox	Foxes / 1000 set-days	Foxes / trapper	Pelt price (\$)
1982–83	263	—	1346	—	145	6.9	5.1	27.75
1983–84	233	—	1367	—	119	8.4	5.9	25.13
1984–85	305	—	1954	—	128	7.8	6.4	24.64
1985–86	256	—	1407	—	128	7.8	5.5	15.03
1986–87	252	—	1457	—	92	10.8	5.8	25.29
1987–88	273	—	1633	—	75	13.4	6.0	21.91
1988–89	226	—	1099	—	82	12.2	4.9	13.50
1989–90	233	—	941	—	68	14.8	4.0	6.19
1990–91	65	—	250	—	99	10.1	3.8	8.24
1991–92	110	—	402	—	98	10.2	3.7	6.87
1992–93	214	—	422	—	88	11.4	2.0	7.08
1993–94	136	—	687	—	53	18.8	5.1	12.00
1994–95	207	—	771	—	51	19.8	3.7	9.62
1995–96	147	—	828	—	44	22.8	5.6	10.65
1996–97	102	—	367	—	46	21.7	3.6	11.60
1997–98	87	—	389	—	68	14.7	4.5	7.76
1998–99	135	—	870	—	96	10.4	6.4	6.96
1999–00	140	—	925	—	58	17.1	6.6	6.62
2000–01	187	—	1159	—	101	9.9	6.2	8.00
2001–02	154	—	1326	—	98	10.2	8.6	11.58
2002–03	299	—	1942	—	116	8.6	6.5	12.47
2003–04	265	—	1749	—	128	7.8	6.6	10.84
2004–05	203	—	942	—	100	10.0	4.6	13.81
2005–06	98	—	603	—	85	11.8	6.2	24.15
2006–07	252	—	—	—	—	—	—	37.25
2007–08	217	—	1093	—	127	7.9	5.0	39.19
2008–09	238	—	1747	—	110	9.1	7.3	17.07
2009–10	163	361	1031	—	126	7.9	6.3	16.56
2010–11	138	292	651	—	90	11.1	4.7	20.97
2011–12	125	485	474	43	124	8.1	4.1	23.13
2012–13	130	216	1069	3	77	13.1	8.2	31.15
2013–14	172	462	843	13	155	6.4	5.0	24.18
2014–15	123	525	490	0	249	4.0	4.0	16.16
2015–16	151	450	623	33	299	3.3	4.3	10.75
2016–17	84	267	356	3	150	6.7	4.3	15.42
2017–18	101	389	664	14	52	19.3	6.7	8.98
2018–19	89	328	330	11	151	6.6	3.8	12.36
2019–20	56	264	163	2	171	5.9	2.9	16.22
2020–21	65	394	358	3	115	8.7	5.6	—
Average	172	369	914	13	110	10.9	5.3	16.24

\*Trappers and foxes per trapper include hunters and their harvest. Set-days per fox and foxes per 1000 set-days are based only on trapping activity, and do not include hunt harvest or hunter-days afield.



Statewide gray fox harvest trends, Utah 1982–2021.



Gray fox trapping harvest statistics by county and ecoregion, Utah 2020–2021.

County	n	Trappers afield	Trap harvest	Traps set	Trapping days	Set-days	Set-days / fox	Foxes / 1000 set-days	Foxes / trapper
Beaver	0	0	—	—	—	—	—	—	—
Box Elder	0	0	—	—	—	—	—	—	—
Iron	3	10	20	52	238	1342	68.7	14.6	2.0
Juab	0	0	—	—	—	—	—	—	—
Millard	0	0	—	—	—	—	—	—	—
Tooele	0	0	—	—	—	—	—	—	—
Great Basin totals	3	10	20	52	238	1342	68.7	14.6	2.0
Cache	0	0	—	—	—	—	—	—	—
Davis	0	0	—	—	—	—	—	—	—
Morgan	0	0	—	—	—	—	—	—	—
Piute	0	0	—	—	—	—	—	—	—
Rich	0	0	—	—	—	—	—	—	—
Salt Lake	0	0	—	—	—	—	—	—	—
Sanpete	0	0	—	—	—	—	—	—	—
Sevier	1	3	3	0	3	0	0.0	—	1.0
Summit	0	0	—	—	—	—	—	—	—
Utah	0	0	—	—	—	—	—	—	—
Wasatch	0	0	—	—	—	—	—	—	—
Weber	0	0	—	—	—	—	—	—	—
Rocky Mountain totals	1	3	3	0	3	0	0.0	—	1.0
Daggett	0	0	—	—	—	—	—	—	—
Duchesne	0	0	—	—	—	—	—	—	—
Uintah	1	3	3	7	7	13	4.0	250.0	1.0
Uintah Basin totals	1	3	3	7	7	13	4.0	250.0	1.0
Carbon	1	3	0	16	65	326	—	0.0	0.0
Emery	0	0	—	—	—	—	—	—	—
Garfield	5	16	111	301	521	13013	117.5	8.5	6.8
Grand	0	0	—	—	—	—	—	—	—
Kane	1	3	65	114	114	3992	61.3	16.3	20.0
San Juan	3	10	46	117	499	7830	171.6	5.8	4.7
Washington	5	16	111	365	691	14637	132.1	7.6	6.8
Wayne	0	0	—	—	—	—	—	—	—
Colorado Plateau totals	15	49	333	914	1890	39797	119.7	8.4	6.8
Unknown	0	0	—	—	—	—	—	—	—
Statewide totals*	19	62	358	973	2137	41153	114.8	8.7	5.8

\*Statewide totals for sample size and trappers afield are not totals of the columns because trappers trapped multiple counties.

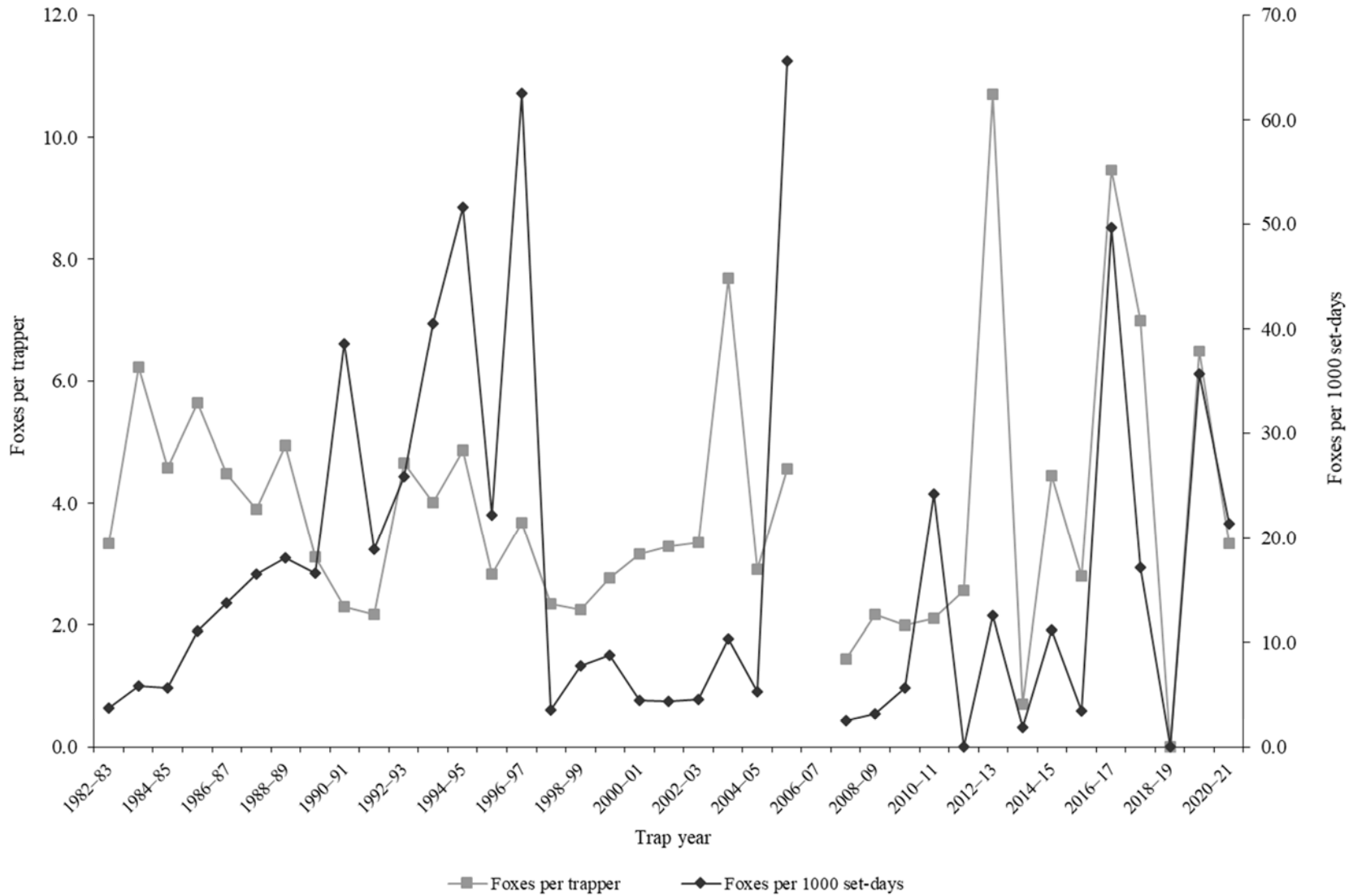
## KIT FOX

Statewide kit fox harvest statistics\*, Utah 1982–2021.

Trap year	Trappers afield	Incidental harvest	Trap harvest	Hunt harvest	Set-days / fox	Foxes / 1000 set-days	Foxes / trapper	Pelt price (\$)
1982–83	109	—	363	—	267	3.7	3.3	11.39
1983–84	112	—	698	—	171	5.8	6.2	11.99
1984–85	142	—	651	—	178	5.6	4.6	11.17
1985–86	108	—	609	—	90	11.1	5.6	7.50
1986–87	122	—	547	—	73	13.7	4.5	9.90
1987–88	138	—	538	—	61	16.5	3.9	10.69
1988–89	130	—	643	—	55	18.1	4.9	6.98
1989–90	117	—	365	—	60	16.6	3.1	3.19
1990–91	81	—	186	—	26	38.6	2.3	4.67
1991–92	86	—	187	—	53	18.9	2.2	2.78
1992–93	41	—	191	—	39	25.9	4.7	4.30
1993–94	75	—	301	—	25	40.6	4.0	4.69
1994–95	109	—	531	—	19	51.6	4.9	6.45
1995–96	77	—	218	—	45	22.2	2.8	6.25
1996–97	44	—	162	—	16	62.5	3.7	6.77
1997–98	41	—	96	—	282	3.5	2.3	3.50
1998–99	75	—	168	—	128	7.8	2.2	7.31
1999–00	66	—	183	—	114	8.8	2.8	2.90
2000–01	51	—	161	—	227	4.4	3.2	6.13
2001–02	52	—	171	—	229	4.4	3.3	10.72
2002–03	90	—	302	—	221	4.5	3.4	5.44
2003–04	83	—	638	—	97	10.4	7.7	5.38
2004–05	89	—	259	—	191	5.2	2.9	8.98
2005–06	40	—	183	—	15	65.6	4.6	10.92
2006–07	65	—	—	—	—	—	—	10.50
2007–08	27	—	39	—	392	2.6	1.4	7.87
2008–09	48	—	104	—	314	3.2	2.2	7.61
2009–10	19	13	38	—	177	5.6	2.0	9.47
2010–11	20	3	42	—	41	24.2	2.1	12.68
2011–12	18	64	0	46	—	0.0	2.6	14.49
2012–13	31	41	315	17	80	12.6	10.7	14.37
2013–14	10	7	7	0	515	1.9	0.7	14.32
2014–15	22	47	95	3	90	11.2	4.5	7.13
2015–16	29	18	37	44	296	3.4	2.8	6.54
2016–17	13	31	123	0	20	49.7	9.5	10.32
2017–18	2	30	14	0	58	17.2	7.0	6.60
2018–19	7	13	0	0	—	0.0	0.0	8.91
2019–20	12	25	74	4	28	35.7	6.5	15.15
2020–21	3	52	10	0	47	21.4	3.3	—
Average	62	29	243	11	132	17.2	3.9	8.31

\*Trappers and foxes per trapper include hunters and their harvest. Set-days per fox and foxes per 1000 set-days are based only on trapping activity, and do not include hunt harvest or hunter-days afield.

Statewide kit fox harvest trends, Utah 1982–2021.



# MARTEN

Statewide marten harvest statistics, Utah 1982–1999.

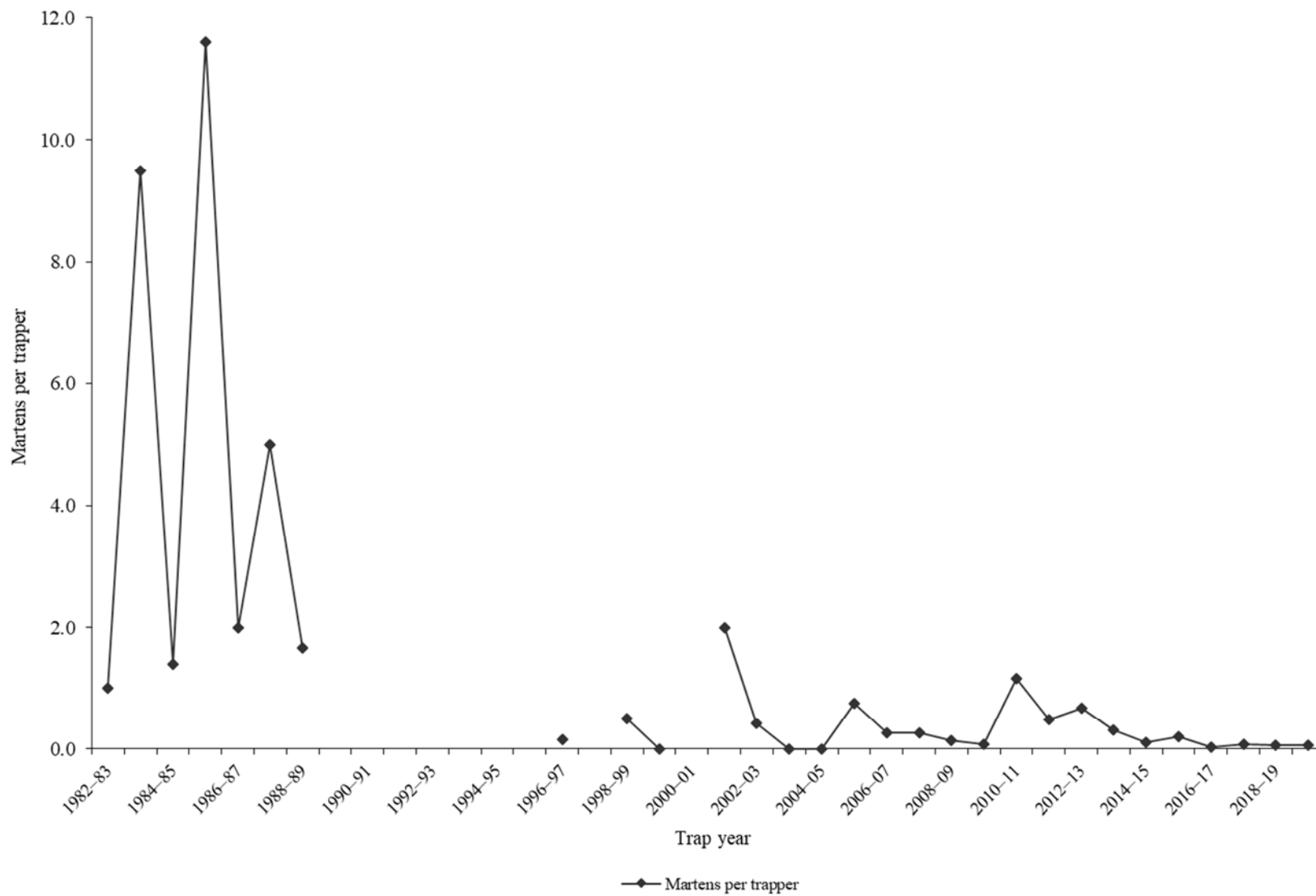
Trap year	Trappers afield	Trap / hunt harvest	Set-days	Set-days / marten	Martens / 1000 set-days	Martens / trapper	Pelt price (\$)
1982–83	1	1	6	6	166.7	1.0	10.00
1983–84	9	84	4704	56	17.9	9.5	20.00
1984–85	9	12	6516	543	1.8	1.4	24.00
1985–86	10	121	7381	61	16.4	11.6	23.00
1986–87	11	22	8558	389	2.6	2.0	25.68
1987–88	10	50	9750	195	5.1	5.0	40.00
1988–89	6	10	1210	121	8.3	1.7	31.00
1989–90	—	—	—	—	—	—	—
1990–91	—	—	—	—	—	—	—
1991–92	—	—	—	—	—	—	—
1992–93	—	—	—	—	—	—	—
1993–94	—	—	—	—	—	—	—
1994–95	—	—	—	—	—	—	—
1995–96	—	—	—	—	—	—	—
1996–97	13	2	—	—	—	0.2	20.00
1997–98	—	—	—	—	—	—	11.00
1998–99	12	6	1228	205	4.9	0.5	7.11
Average	9	34	4919	197	28.0	3.6	21.18

Statewide marten harvest statistics, Utah 1999–2021.

Trap year	Permits sold	Successful trappers	Male harvest	Female harvest	Unknown harvest	Total harvest	Success rate (%)*	Martens / trapper*
1999–00	5	0	0	0	0	0	0.0	0.0
2000–01	—	1	3	3	0	6	—	—
2001–02	11	2	16	6	0	22	18.2	2.0
2002–03	12	1	3	2	0	5	8.3	0.4
2003–04	18	0	0	0	0	0	0.0	0.0
2004–05	12	0	0	0	0	0	0.0	0.0
2005–06	16	2	7	4	1	12	12.5	0.8
2006–07	26	3	6	1	0	7	11.5	0.3
2007–08	22	4	7	14	0	21	18.2	1.0
2008–09	28	1	2	2	0	4	3.6	0.1
2009–10	25	1	2	0	0	2	4.0	0.1
2010–11	31	2	24	12	0	36	6.5	1.2
2011–12	29	3	7	3	4	14	10.3	0.5
2012–13	39	3	15	5	6	26	7.7	0.7
2013–14	51	6	13	3	0	16	11.8	0.3
2014–15	202	2	16	6	0	22	1.0	0.1
2015–16	46	1	5	4	0	9	2.2	0.2
2016–17	89	2	2	0	0	2	2.2	0.0
2017–18	184	3	11	4	0	15	1.6	0.1
2018–19	188	1	9	2	0	11	0.5	0.1
2019–20	152	1	4	4	0	8	0.7	0.1
2020–21	179	2	3	1	0	4	1.1	0.0
Average	65	2	7	3	1	11	5.8	0.4

\*Assumption: Every person who possessed a marten permit trapped or hunted.

Statewide marten harvest trends, Utah 1982–2021.



# MINK

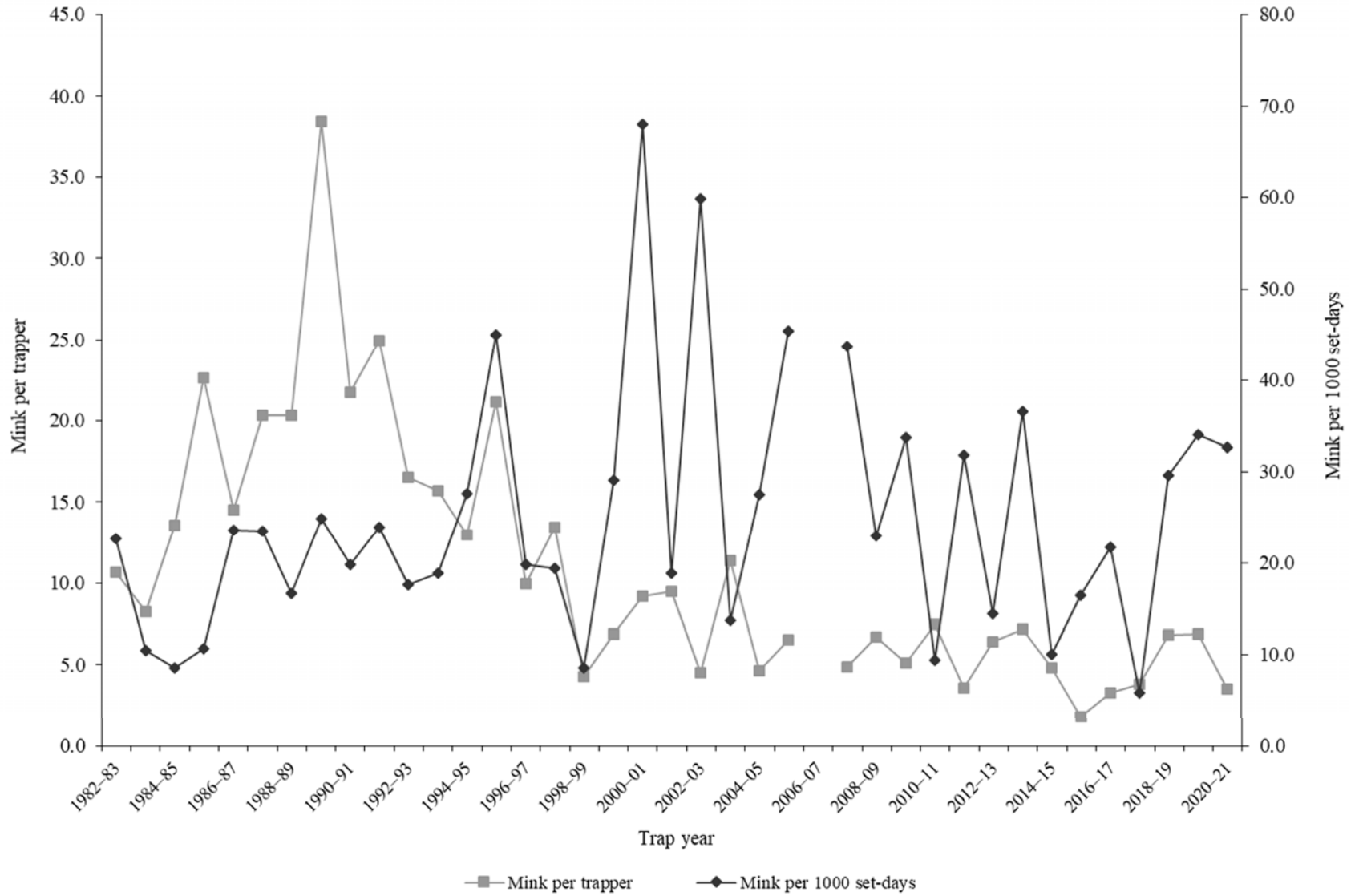
Statewide mink harvest statistics\*, Utah 1982–2021.

Trap year	Trappers afield	Incidental harvest	Trap harvest	Hunt harvest	Set-days / mink	Minks / 1000 set-days	Minks / trapper	Pelt price (\$)
1982–83	38	—	405	—	44	22.7	10.7	10.85
1983–84	46	—	379	—	95	10.5	8.2	9.13
1984–85	40	—	542	—	117	8.6	13.6	10.27
1985–86	37	—	837	—	94	10.7	22.6	6.00
1986–87	57	—	828	—	42	23.6	14.5	10.63
1987–88	51	—	1037	—	42	23.6	20.3	12.25
1988–89	42	—	854	—	60	16.6	20.3	10.69
1989–90	29	—	1114	—	40	24.8	38.4	6.30
1990–91	25	—	543	—	50	19.8	21.7	6.33
1991–92	29	—	723	—	42	23.9	24.9	6.81
1992–93	23	—	380	—	57	17.6	16.5	7.50
1993–94	30	—	472	—	53	18.9	15.7	8.41
1994–95	27	—	350	—	36	27.6	13.0	8.38
1995–96	25	—	529	—	22	45.0	21.2	10.40
1996–97	27	—	269	—	50	19.8	10.0	10.95
1997–98	25	—	337	—	51	19.4	13.5	5.81
1998–99	81	—	345	—	116	8.6	4.3	7.11
1999–00	61	—	419	—	34	29.1	6.9	6.07
2000–01	51	—	468	—	15	68.1	9.2	4.92
2001–02	30	—	284	—	53	18.8	9.5	5.20
2002–03	59	—	268	—	17	59.8	4.5	2.07
2003–04	59	—	673	—	73	13.7	11.4	8.00
2004–05	68	—	317	—	36	27.5	4.7	8.98
2005–06	34	—	222	—	22	45.4	6.5	9.97
2006–07	65	—	—	—	—	—	—	7.94
2007–08	38	—	186	—	23	43.7	4.9	9.33
2008–09	36	—	242	—	44	22.9	6.7	5.96
2009–10	66	57	338	—	30	33.7	5.1	8.00
2010–11	65	151	485	—	107	9.4	7.5	11.27
2011–12	43	61	153	7	31	31.8	3.6	15.08
2012–13	110	147	706	14	70	14.4	6.4	19.18
2013–14	115	186	826	0	27	36.6	7.2	16.21
2014–15	54	82	259	0	100	10.0	4.8	8.57
2015–16	74	55	133	0	61	16.4	1.8	4.22
2016–17	60	29	196	21	46	21.7	3.3	7.52
2017–18	59	47	225	0	173	5.8	3.8	3.00
2018–19	33	20	219	7	34	29.6	6.8	2.00
2019–20	47	37	324	0	29	34.0	6.9	0.94
2020–21	26	36	91	0	31	32.7	3.5	—
Average	48	76	447	5	54	24.9	10.9	8.22

\*Trappers and minks per trapper include hunters and their harvest. Set-days per mink and minks per 1000 set-days are based only on trapping activity, and do not include hunt harvest or hunter-days afield.



Statewide mink harvest trends, Utah 1982–2021.



\*Statewide totals for sample size and trappers afield are not totals of the columns because trappers trapped multiple counties.

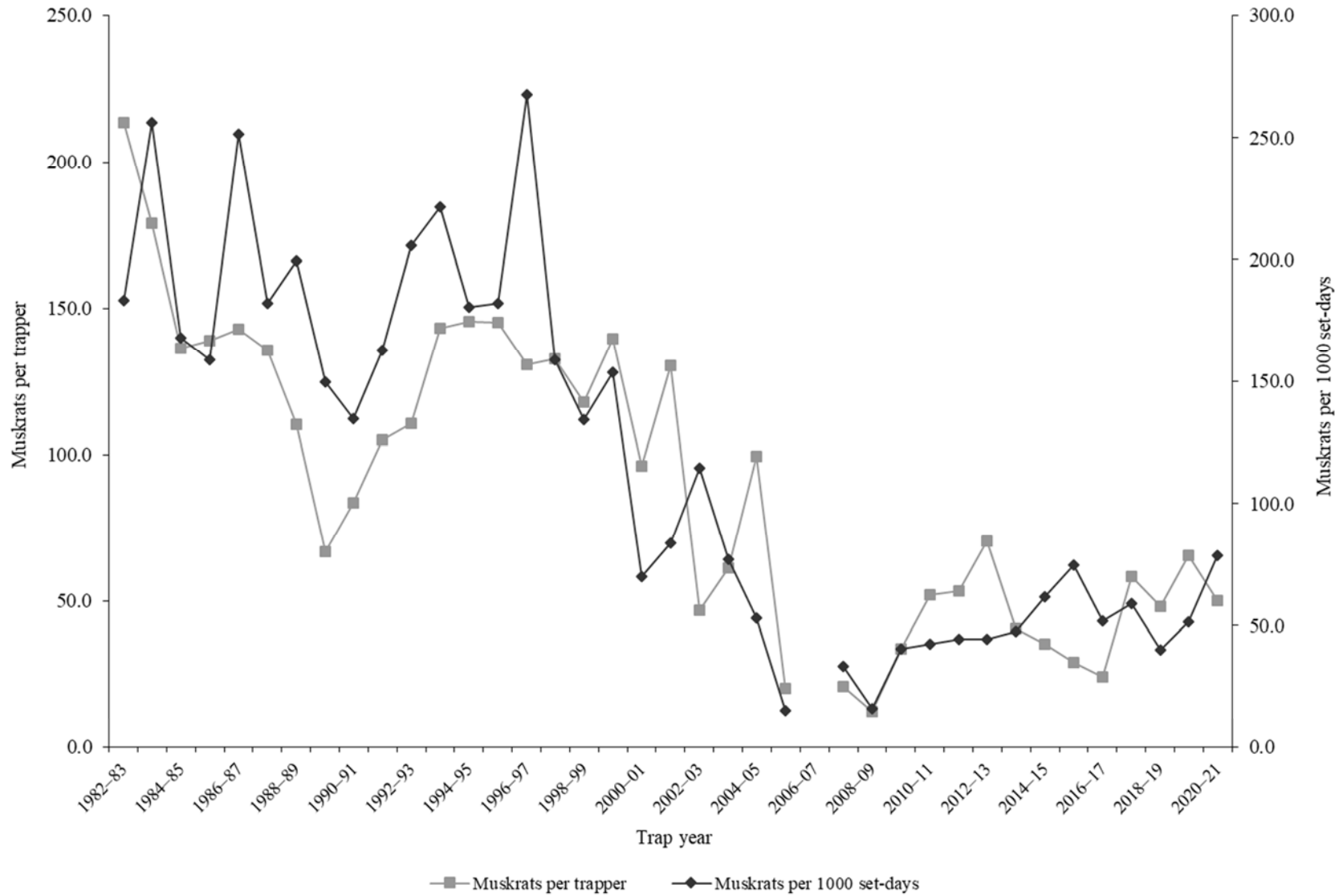
# MUSKRAT

Statewide muskrat harvest statistics\*, Utah 1982–2021.

Trap year	Trappers afield	Incidental harvest	Trap harvest	Hunt harvest	Set-days / muskrat	Musk rats / 1000 set-days	Musk rats / trapper	Pelt price (\$)
1982–83	258	—	55137	—	5	183.1	213.7	2.16
1983–84	309	—	55298	—	4	256.2	179.0	2.46
1984–85	400	—	54526	—	6	168.1	136.3	2.45
1985–86	282	—	39195	—	6	158.9	139.0	1.86
1986–87	416	—	59368	—	4	251.7	142.7	2.66
1987–88	432	—	58560	—	5	182.2	135.6	2.46
1988–89	303	—	33400	—	5	199.4	110.2	1.40
1989–90	253	—	16898	—	7	149.6	66.8	0.89
1990–91	85	—	7102	—	7	134.6	83.6	0.91
1991–92	186	—	19547	—	6	162.7	105.1	1.60
1992–93	105	—	11623	—	5	205.9	110.7	1.18
1993–94	157	—	22488	—	5	221.5	143.2	1.89
1994–95	195	—	28369	—	6	180.5	145.5	1.74
1995–96	181	—	26260	—	5	182.2	145.1	2.09
1996–97	179	—	23371	—	4	267.9	130.6	3.59
1997–98	203	—	26907	—	6	158.7	132.5	2.01
1998–99	186	—	21895	—	7	134.1	117.7	1.73
1999–00	151	—	21086	—	7	153.7	139.6	1.00
2000–01	108	—	10376	—	14	69.8	96.1	1.58
2001–02	115	—	14979	—	12	84.0	130.3	2.60
2002–03	135	—	6334	—	9	114.6	46.9	1.59
2003–04	176	—	10777	—	13	77.0	61.2	1.57
2004–05	151	—	15016	—	19	53.1	99.4	1.57
2005–06	41	0	824	—	66	15.3	20.1	3.97
2006–07	81	—	—	—	—	—	—	3.31
2007–08	80	110	1665	—	30	33.3	20.9	3.04
2008–09	98	137	1198	—	63	15.9	12.2	2.49
2009–10	158	164	5341	—	25	40.5	33.8	4.93
2010–11	141	337	7361	—	24	42.2	52.2	5.40
2011–12	150	281	7985	—	23	44.4	53.2	7.28
2012–13	192	117	13534	3	23	44.2	70.5	8.11
2013–14	213	159	8605	0	21	47.5	40.4	8.73
2014–15	168	180	5902	9	16	61.8	35.1	3.76
2015–16	210	41	6130	4	13	74.9	29.2	1.89
2016–17	128	92	3069	3	19	51.8	24.0	3.78
2017–18	122	110	7131	24	17	58.8	58.5	2.91
2018–19	72	24	3465	2	25	39.9	48.2	3.15
2019–20	74	153	4837	2	19	51.5	65.4	3.26
2020–21	98	65	4897	0	13	78.5	50.0	—
Average	179	131	18959	5	15	117.1	90.1	2.87

\*Trappers and muskrat per trapper include hunters and their harvest. Set-days per muskrat and muskrat per 1000 set-days are based only on trapping activity, and do not include hunt harvest or hunter-days afield.

Statewide muskrat harvest trends, Utah 1982–2021.



Muskrat harvest statistics by county and ecoregion, Utah 2020–2021.

County	n	Trappers afield	Trap harvest	Traps set	Trapping days	Set-days	Set-days / muskrat	Musk rats / 1000 set-days	Musk rats / trapper
Beaver	0	0	—	—	—	—	—	—	—
Box Elder	4	13	1763	811	310	22779	12.9	77.4	135.3
Iron	0	0	—	—	—	—	—	—	—
Juab	3	10	199	192	117	2493	12.5	79.7	20.3
Millard	0	0	—	—	—	—	—	—	—
Tooele	0	0	—	—	—	—	—	—	—
Great Basin totals	7	23	1962	1004	427	25272	12.9	77.6	86.0
Cache	4	13	1541	401	554	16259	10.5	94.8	118.3
Davis	1	3	326	98	98	2933	9.0	111.1	100.0
Morgan	0	0	—	—	—	—	—	—	—
Piute	1	3	33	13	98	391	12.0	83.3	10.0
Rich	0	0	—	—	—	—	—	—	—
Salt Lake	1	3	0	7	16	33	—	0.0	0.0
Sanpete	2	7	49	62	293	3324	68.0	14.7	7.5
Sevier	1	3	23	7	23	46	2.0	500.0	7.0
Summit	0	0	—	—	—	—	—	—	—
Utah	5	16	313	147	355	3154	10.1	99.2	19.2
Wasatch	0	0	—	—	—	—	—	—	—
Weber	4	13	267	196	404	4418	16.5	60.5	20.5
Rocky Mountain totals	19	62	2552	929	1841	30557	12.0	83.5	41.2
Daggett	1	3	72	46	13	182	2.5	392.9	22.0
Duchesne	2	7	78	36	49	459	5.9	170.2	12.0
Uintah	1	3	196	156	98	4692	24.0	41.7	60.0
Uintah Basin totals	4	13	346	238	160	5334	15.4	64.8	26.5
Carbon	0	0	—	—	—	—	—	—	—
Emery	0	0	—	—	—	—	—	—	—
Garfield	0	0	—	—	—	—	—	—	—
Grand	0	0	—	—	—	—	—	—	—
Kane	0	0	—	—	—	—	—	—	—
San Juan	0	0	—	—	—	—	—	—	—
Washington	0	0	—	—	—	—	—	—	—
Wayne	1	3	39	42	94	1228	31.4	31.8	12.0
Colorado Plateau totals	1	3	39	42	94	1228	31.4	31.8	12.0
Unknown	0	0	—	—	—	—	—	—	—
Statewide totals*	30	98	4897	2212	2522	62391	12.7	78.5	50.1

\*Statewide totals for sample size and trappers afield are not totals of the columns because trappers trapped multiple counties.

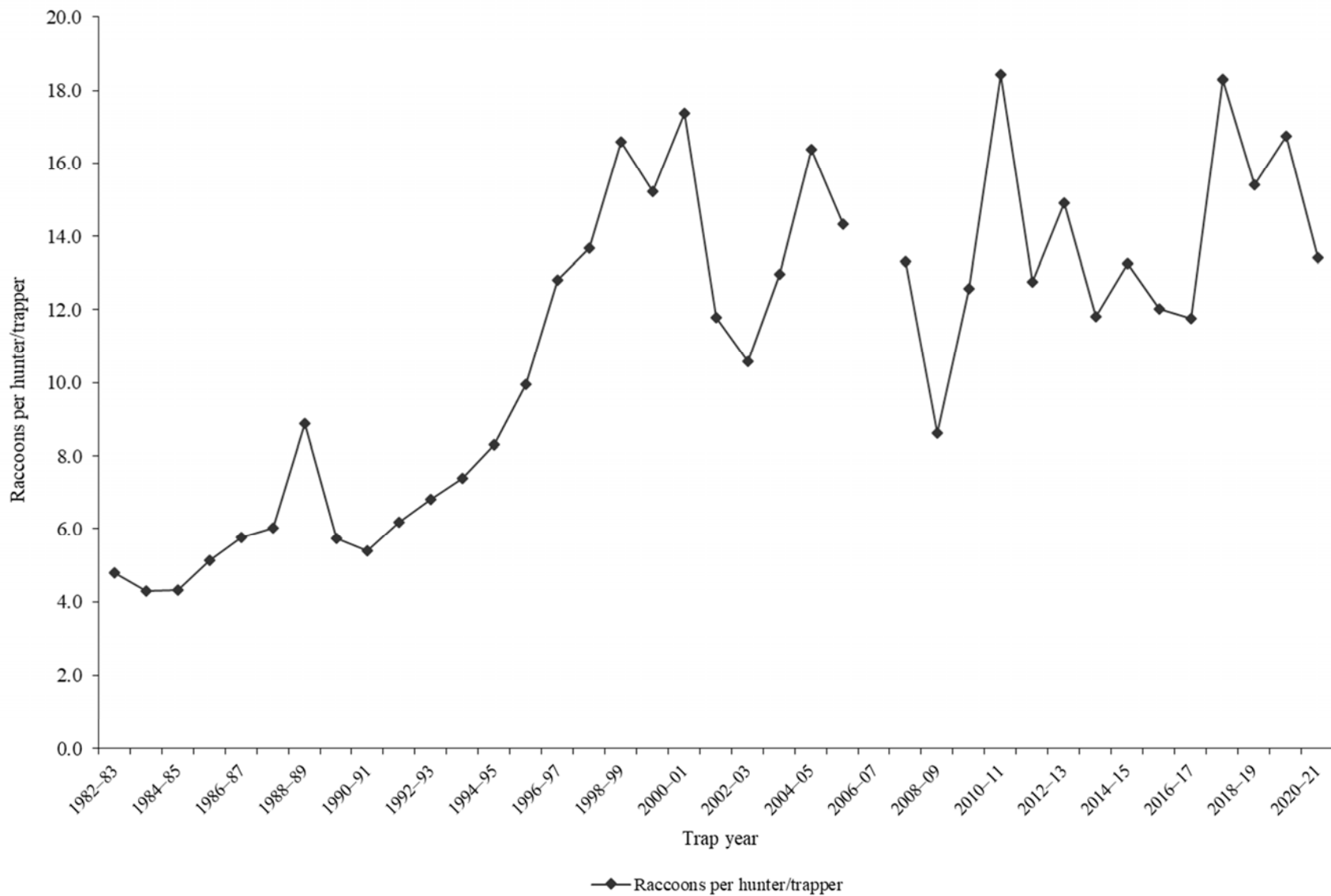
# RACCOON

Statewide raccoon harvest statistics\*, Utah 1982–2021.

Trap year	Trappers afield	Incidental harvest	Trap harvest	Hunt harvest	Set-days / raccoon	Raccoons / 1000 set-days	Raccoons / trapper	Pelt price (\$)
1982–83	178	—	853	—	19	51.3	4.8	12.34
1983–84	192	—	822	—	40	25.0	4.3	13.51
1984–85	329	—	1417	—	47	21.2	4.3	12.85
1985–86	290	—	1485	—	49	20.5	5.1	9.26
1986–87	418	—	2412	—	39	25.5	5.8	12.62
1987–88	434	—	2619	—	41	24.3	6.0	9.41
1988–89	350	—	3104	—	14	71.9	8.9	7.71
1989–90	430	—	2464	—	17	58.8	5.7	5.78
1990–91	214	—	1156	—	18	54.3	5.4	4.65
1991–92	368	—	2273	—	20	50.3	6.2	4.72
1992–93	272	—	1851	—	17	59.5	6.8	2.57
1993–94	306	—	2259	—	19	53.4	7.4	6.98
1994–95	364	—	3025	—	23	43.8	8.3	6.06
1995–96	293	—	2914	—	10	100.1	9.9	8.07
1996–97	330	—	4228	—	13	77.2	12.8	13.35
1997–98	365	—	4989	—	29	34.5	13.7	9.98
1998–99	468	—	7765	—	22	45.5	16.6	4.95
1999–00	349	—	5317	—	34	29.8	15.2	5.67
2000–01	327	—	5678	—	29	34.8	17.4	5.16
2001–02	321	—	3785	—	32	31.2	11.8	8.04
2002–03	378	—	4001	—	26	38.4	10.6	5.62
2003–04	434	—	5634	—	37	26.8	13.0	10.63
2004–05	391	—	6405	—	35	28.4	16.4	6.54
2005–06	230	—	1761	1537	246	4.1	14.3	9.83
2006–07	325	—	—	—	—	—	—	7.18
2007–08	300	—	2414	1576	50	19.8	13.3	10.85
2008–09	275	—	1639	729	58	17.4	8.6	6.21
2009–10	349	633	3439	946	39	25.9	12.6	7.09
2010–11	292	571	3958	1417	28	36.0	18.4	8.17
2011–12	289	453	3168	520	34	29.6	12.8	7.77
2012–13	377	614	4048	1577	35	28.4	14.9	14.08
2013–14	374	1066	4031	385	48	21.0	11.8	9.50
2014–15	354	743	4046	648	49	20.4	13.3	5.46
2015–16	343	627	3631	490	44	22.7	12.0	4.10
2016–17	264	523	2734	371	55	18.2	11.8	4.92
2017–18	258	601	3539	1181	29	34.8	18.3	3.92
2018–19	141	486	1798	376	48	21.0	15.4	6.49
2019–20	217	376	2979	652	27	37.6	16.7	6.55
2020–21	283	671	2858	935	118	8.5	13.4	—
Average	320	614	3224	889	40	35.6	11.2	7.86

\*Trappers and raccoons per trapper include hunters and their harvest. Set-days per raccoon and raccoons per 1000 set-days are based only on trapping activity, and do not include hunt harvest or hunter-days afield.

Statewide raccoon harvest trends, Utah 1982–2021.



Raccoon trapping harvest statistics by county and ecoregion, Utah 2020–2021.

County	n	Trappers afield	Trap harvest	Traps set	Trapping days	Set-days	Set-days / raccoon	Raccoons / 1000 set-days	Raccoons / trapper
Beaver	2	7	3	0	68	0	0.0	—	0.5
Box Elder	4	13	78	81	313	1851	23.7	42.3	6.0
Iron	3	10	39	13	39	156	4.0	250.0	4.0
Juab	2	7	46	46	108	345	7.6	132.1	7.0
Millard	2	7	10	7	189	378	38.7	25.9	1.5
Tooele	1	3	20	16	20	98	5.0	200.0	6.0
Great Basin totals	14	46	196	163	736	2828	14.5	69.1	4.3
Cache	5	16	485	124	760	7103	14.6	68.3	29.8
Davis	3	10	127	62	362	2796	22.0	45.5	13.0
Morgan	2	7	7	10	23	68	10.5	95.2	1.0
Piute	1	3	33	16	46	228	7.0	142.9	10.0
Rich	0	0	—	—	—	—	—	—	—
Salt Lake	2	7	3	13	26	46	14.0	71.4	0.5
Sanpete	4	13	42	75	459	6422	151.6	6.6	3.3
Sevier	1	3	33	16	65	326	10.0	100.0	10.0
Summit	6	20	176	499	1547	169653	964.2	1.0	9.0
Utah	16	52	505	485	1144	22370	44.3	22.6	9.7
Wasatch	3	10	68	169	2033	87585	1280.0	0.8	7.0
Weber	6	20	482	300	1548	26197	54.3	18.4	24.7
Rocky Mountain totals	49	160	1961	1769	8013	322795	164.6	6.1	12.3
Daggett	1	3	0	23	29	205	—	0.0	0.0
Duchesne	9	29	352	101	546	2051	5.8	171.6	12.0
Uintah	1	3	163	49	163	2444	15.0	66.7	50.0
Uintah Basin totals	11	36	515	173	739	4700	9.1	109.5	14.4
Carbon	1	3	81	65	130	2607	32.0	31.3	25.0
Emery	2	7	23	42	241	1492	65.4	15.3	3.5
Garfield	0	0	—	—	—	—	—	—	—
Grand	1	3	33	13	98	391	12.0	83.3	10.0
Kane	0	0	—	—	—	—	—	—	—
San Juan	2	7	7	0	339	0	0.0	—	1.0
Washington	2	7	42	26	225	1232	29.1	34.4	6.5
Wayne	0	0	—	—	—	—	—	—	—
Colorado Plateau totals	8	26	186	147	1033	5722	30.8	32.5	7.1
Unknown	0	0	—	—	—	—	—	—	—
Statewide totals*	76	248	2858	2252	10520	336045	117.6	8.5	11.5

\*Statewide totals for sample size and trappers afield are not totals of the columns because trappers trapped multiple counties.

## RED FOX

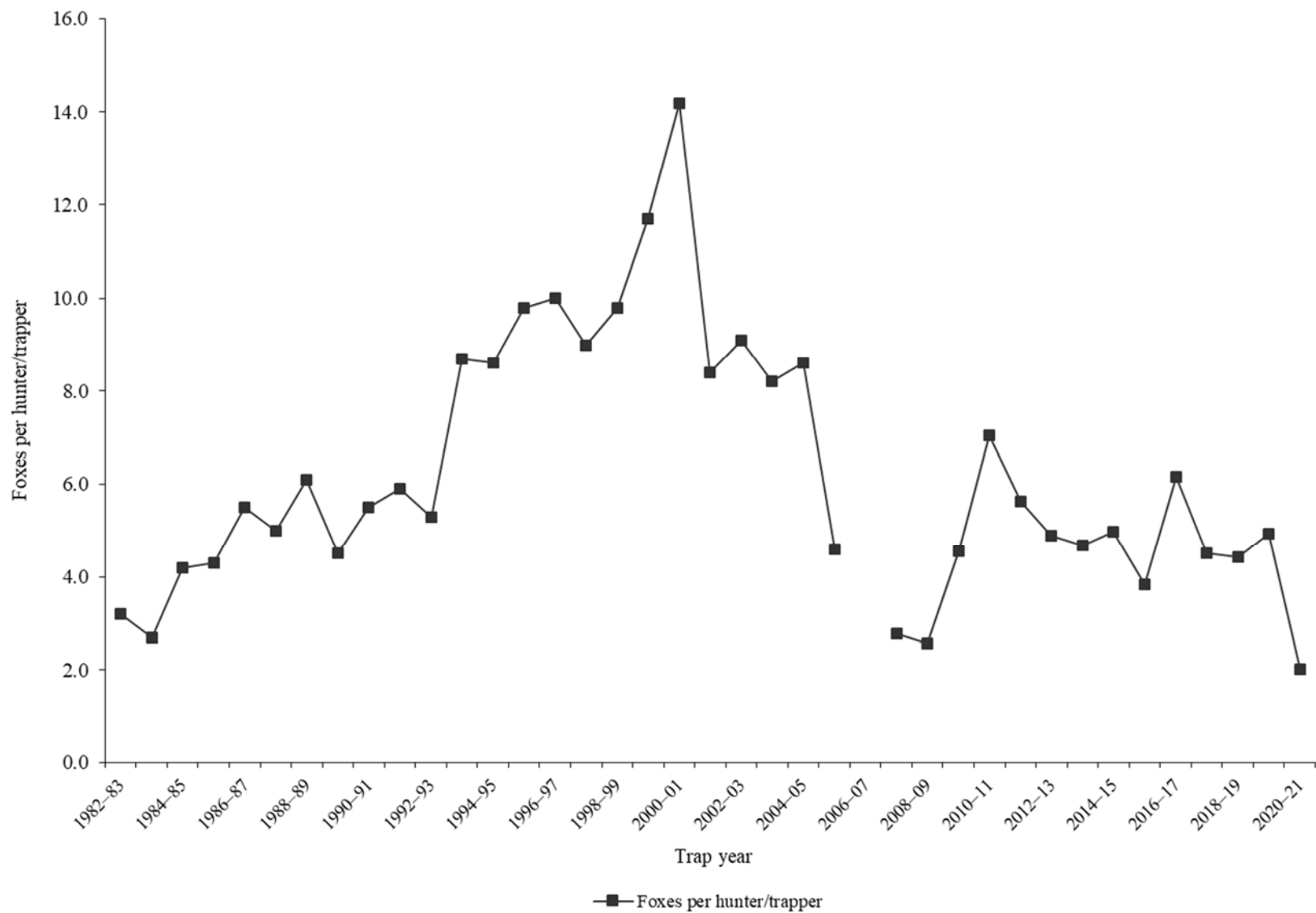
Statewide red fox harvest statistics\*, Utah 1982–2021.

Trap year	Trappers afield	Incidental harvest	Trap harvest	Hunt harvest	Set-days / fox	Foxes / 1000 set-days	Foxes / trapper	Pelt price (\$)
1982–83	172	—	544	—	128	7.8	3.2	30.13
1983–84	191	—	523	—	134	7.5	2.7	28.43
1984–85	298	—	1244	—	116	8.7	4.2	25.90
1985–86	316	—	1351	—	74	13.6	4.3	15.83
1986–87	444	—	2446	—	59	17.1	5.5	20.14
1987–88	506	—	2545	—	50	20.2	5.0	13.66
1988–89	398	—	2446	—	34	29.2	6.1	6.57
1989–90	496	—	2250	—	40	25.3	4.5	7.80
1990–91	365	—	1993	—	25	40.0	5.5	6.34
1991–92	623	—	3663	—	28	35.4	5.9	10.70
1992–93	594	—	3126	—	27	37.5	5.3	10.12
1993–94	578	—	5055	—	26	38.9	8.7	14.74
1994–95	509	—	4378	—	36	28.0	8.6	15.34
1995–96	421	—	4115	—	26	38.7	9.8	18.08
1996–97	427	—	4274	—	27	36.8	10.0	17.48
1997–98	414	—	3744	—	32	31.5	9.0	11.31
1998–99	570	—	5600	—	34	29.5	9.8	8.95
1999–00	420	—	4900	—	44	22.7	11.7	14.19
2000–01	375	—	5330	—	52	19.1	14.2	16.92
2001–02	379	—	3192	—	59	16.9	8.4	24.48
2002–03	482	—	4399	—	76	13.1	9.1	28.19
2003–04	568	—	4639	—	71	14.1	8.2	18.07
2004–05	545	—	4674	—	102	9.8	8.6	18.86
2005–06	406	—	1874	—	196	5.1	4.6	24.35
2006–07	496	—	—	—	—	—	—	20.49
2007–08	407	—	1130	—	174	5.7	2.8	21.42
2008–09	339	—	872	—	261	3.8	2.6	17.98
2009–10	461	557	1908	192	102	9.8	4.6	16.32
2010–11	376	216	2435	213	84	12.0	7.0	22.62
2011–12	335	388	1757	128	84	11.9	5.6	42.47
2012–13	380	195	1690	171	83	12.1	4.9	43.50
2013–14	428	519	1934	64	154	6.5	4.7	40.39
2014–15	361	478	1714	79	161	6.2	5.0	24.30
2015–16	361	494	1183	203	180	5.6	3.8	15.37
2016–17	207	351	1175	99	249	4.0	6.2	16.16
2017–18	251	372	1048	84	122	8.2	4.5	14.63
2018–19	165	252	627	102	179	5.6	4.4	15.92
2019–20	192	233	669	277	116	8.6	4.9	18.89
2020–21	222	342	407	39	177	5.7	2.0	—
Average	397	366	2549	138	95	17.2	6.2	19.40

\*Trappers and foxes per trapper include hunters and their harvest. Set-days per fox and foxes per 1000 set-days are based only on trapping activity, and do not include hunt harvest or hunter-days afield.



Statewide red fox harvest trends, Utah 1982–2021.



Red fox trapping harvest statistics by county and ecoregion, Utah 2020–2021.

County	n	Trappers afield	Trap harvest	Traps set	Trapping days	Set-days	Set-days / fox	Foxes / 1000 set-days	Foxes / trapper
Beaver	1	3	7	20	391	2346	360.0	2.8	2.0
Box Elder	2	7	3	16	153	437	134.0	7.5	0.5
Iron	8	26	20	98	433	2634	134.8	7.4	0.8
Juab	2	7	39	49	391	5865	150.0	6.7	6.0
Millard	0	0	—	—	—	—	—	—	—
Tooele	4	13	13	55	381	3636	279.0	3.6	1.0
Great Basin totals	17	55	82	238	1750	14918	183.1	5.5	1.5
Cache	3	10	20	65	150	1447	74.0	13.5	2.0
Davis	2	7	20	23	68	251	12.8	77.9	3.0
Morgan	1	3	3	39	98	1173	360.0	2.8	1.0
Piute	0	0	—	—	—	—	—	—	—
Rich	1	3	13	16	65	326	25.0	40.0	4.0
Salt Lake	2	7	0	0	7	0	—	—	0.0
Sanpete	5	16	39	173	863	16402	419.5	2.4	2.4
Sevier	2	7	10	42	137	684	70.0	14.3	1.5
Summit	2	7	10	3	297	587	60.0	16.7	1.5
Utah	10	33	101	280	948	7876	78.0	12.8	3.1
Wasatch	1	3	7	46	293	4106	630.0	1.6	2.0
Weber	1	3	13	49	65	978	75.0	13.3	4.0
Rocky Mountain totals	30	98	236	736	2991	33828	144.2	6.9	2.4
Daggett	0	0	—	—	—	—	—	—	—
Duchesne	5	16	13	16	1707	489	37.5	26.7	0.8
Uintah	2	7	0	0	46	0	—	—	0.0
Uintah Basin totals	7	23	13	16	1752	489	37.5	26.7	0.6
Carbon	1	3	10	20	65	391	40.0	25.0	3.0
Emery	1	3	10	13	196	782	80.0	12.5	3.0
Garfield	4	13	16	98	394	10714	657.6	1.5	1.3
Grand	0	0	—	—	—	—	—	—	—
Kane	0	0	—	—	—	—	—	—	—
San Juan	2	7	42	81	199	9775	230.8	4.3	6.5
Washington	1	3	0	0	20	0	—	—	0.0
Wayne	1	3	0	33	98	978	—	0.0	0.0
Colorado Plateau totals	10	33	78	244	971	22639	289.5	3.5	2.4
Unknown	0	0	—	—	—	—	—	—	—
Statewide totals*	62	202	407	1235	7464	71874	176.5	5.7	2.0

\*Statewide totals for sample size and trappers afield are not totals of the columns because trappers trapped multiple counties.

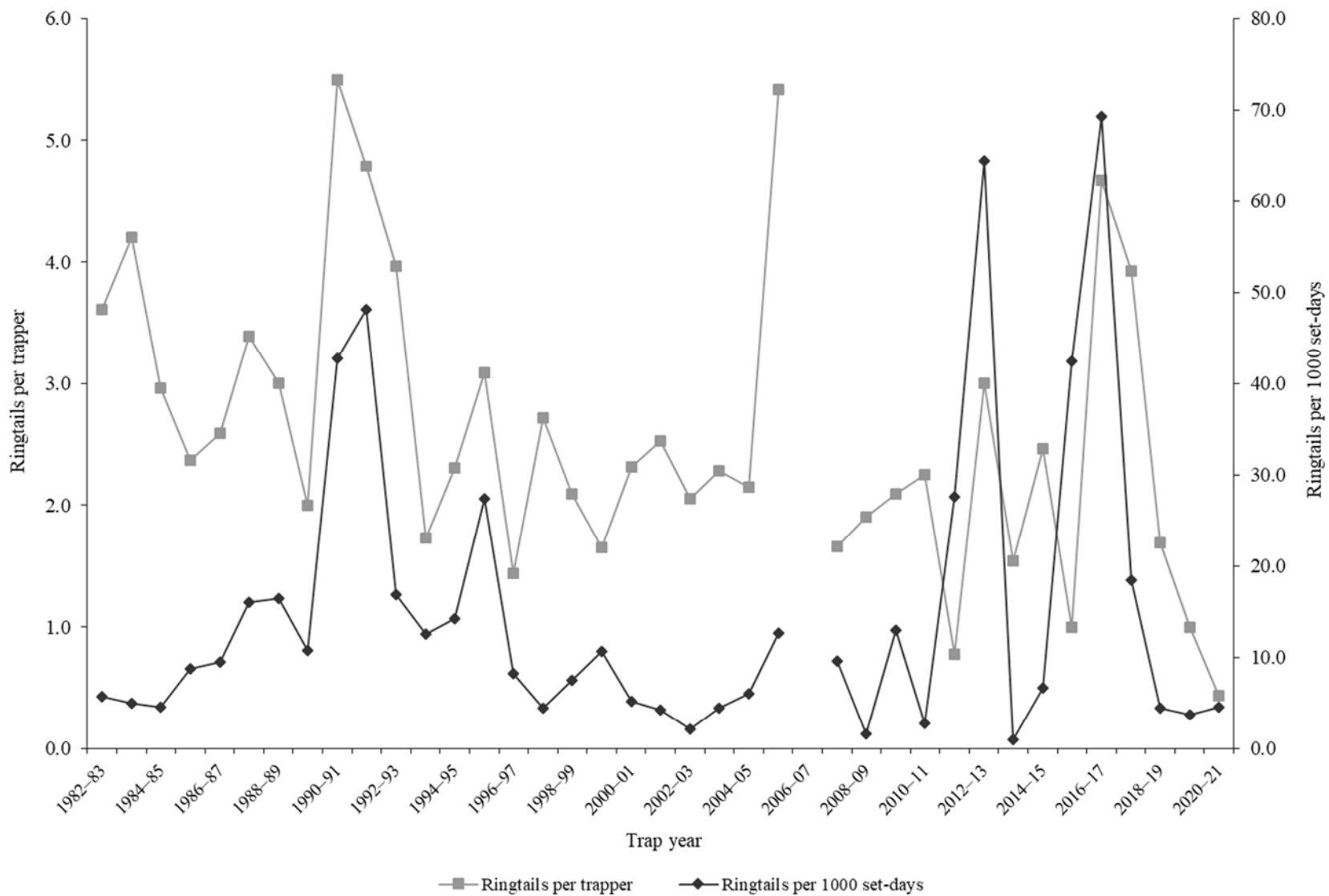
## RINGTAIL

Statewide ringtail harvest statistics\*, Utah 1982–2021.

Trap year	Trappers afield	Incidental harvest	Trap harvest	Hunt harvest	Set-days / ringtail	Ringtails / 1000 set-days	Ringtails / trapper	Pelt price (\$)
1982–83	90	—	325	—	176	5.7	3.6	4.40
1983–84	90	—	378	—	203	4.9	4.2	3.96
1984–85	85	—	252	—	218	4.6	3.0	3.15
1985–86	68	—	161	—	114	8.8	2.4	2.69
1986–87	79	—	205	—	105	9.6	2.6	3.64
1987–88	79	—	268	—	62	16.0	3.4	2.40
1988–89	62	—	186	—	61	16.4	3.0	5.70
1989–90	66	—	132	—	93	10.7	2.0	2.65
1990–91	18	—	99	—	23	42.8	5.5	3.50
1991–92	46	—	220	—	21	48.1	4.8	3.22
1992–93	27	—	107	—	59	16.9	4.0	3.97
1993–94	37	—	64	—	80	12.6	1.7	4.04
1994–95	69	—	159	—	70	14.3	2.3	6.41
1995–96	44	—	136	—	37	27.4	3.1	6.96
1996–97	32	—	46	—	122	8.2	1.4	11.68
1997–98	21	—	57	—	227	4.4	2.7	2.99
1998–99	66	—	138	—	134	7.5	2.1	4.17
1999–00	61	—	101	—	93	10.7	1.7	7.03
2000–01	51	—	118	—	194	5.2	2.3	6.00
2001–02	40	—	101	—	236	4.2	2.5	10.29
2002–03	56	—	115	—	474	2.1	2.1	5.20
2003–04	42	—	96	—	223	4.5	2.3	6.83
2004–05	59	—	127	—	165	6.1	2.2	11.12
2005–06	19	—	103	—	79	12.7	5.4	9.31
2006–07	98	—	—	—	—	—	—	12.37
2007–08	65	—	108	—	104	9.6	1.7	14.86
2008–09	31	—	59	—	621	1.6	1.9	10.70
2009–10	22	63	46	—	77	13.0	2.1	15.00
2010–11	16	26	36	—	356	2.8	2.3	18.91
2011–12	18	14	14	—	36	27.6	0.8	12.21
2012–13	7	41	21	0	16	64.5	3.0	15.66
2013–14	24	64	37	0	991	1.0	1.5	17.91
2014–15	13	32	32	0	150	6.7	2.5	17.27
2015–16	18	52	18	0	24	42.4	1.0	12.56
2016–17	18	18	84	0	14	69.3	4.7	23.47
2017–18	28	47	110	2	55	18.4	3.9	20.81
2018–19	13	0	15	7	221	4.5	1.7	10.36
2019–20	6	0	6	0	271	3.7	1.0	27.77
2020–21	16	0	7	0	219	4.6	0.4	—
Average	44	30	113	1	169	15.1	2.6	9.50

\*Trappers and ringtails per trapper include hunters and their harvest. Set-days per ringtail and ringtails per 1000 set-days are based only on trapping activity, and do not include hunt harvest or hunter-days afield.

Statewide ringtail harvest trends, Utah 1982–2021.



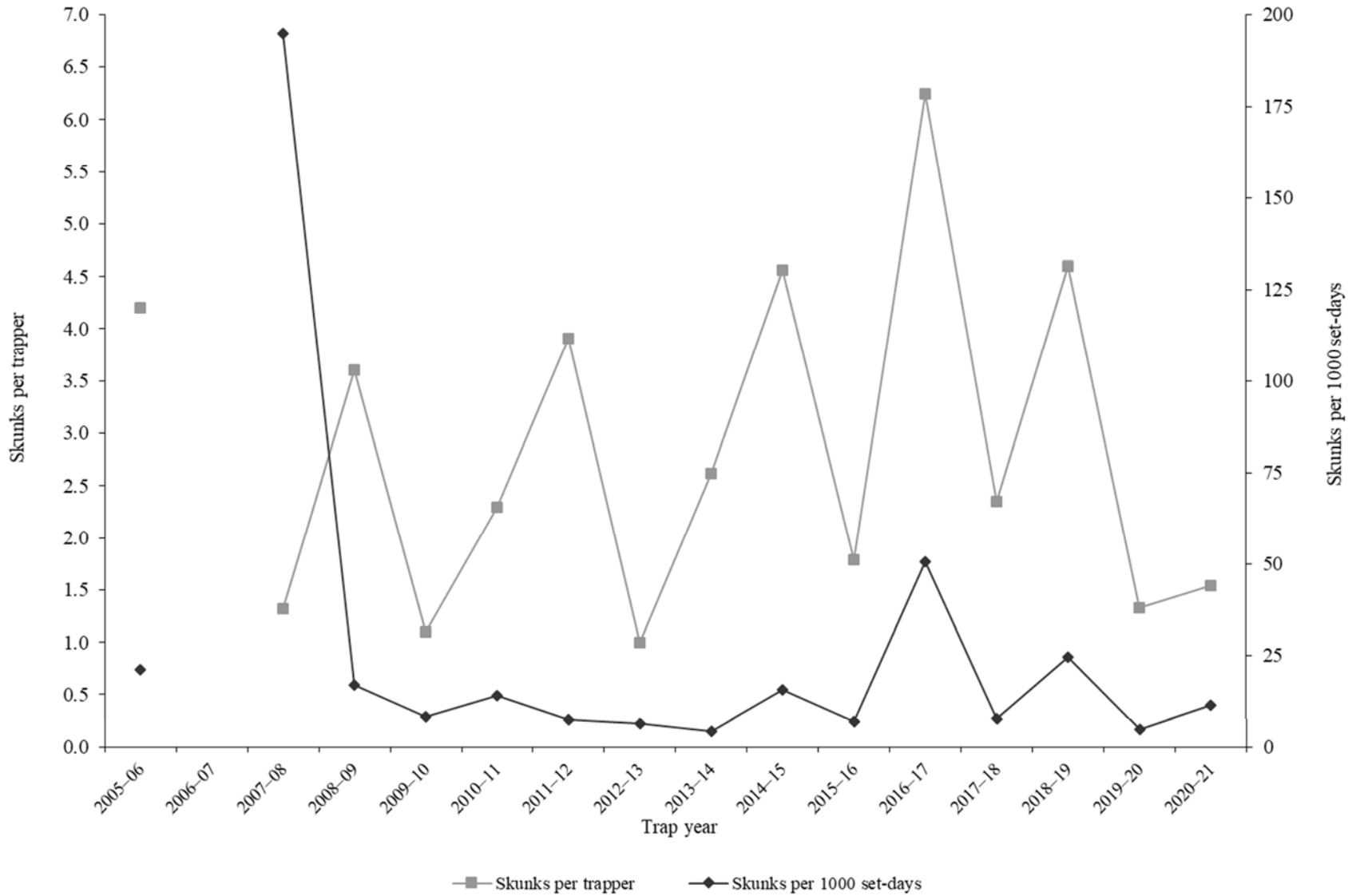
## SPOTTED SKUNK

Statewide spotted skunk harvest statistics\*, Utah 2005–2021.

Trap year	Trappers afield	Incidental harvest	Trap harvest	Hunt harvest	Set-days / skunk	Skunks / 1000 set-days	Skunks / trapper	Pelt price (\$)
2005–06	34	—	144	—	47	21.2	4.2	5.37
2006–07	106	—	—	—	—	—	—	12.42
2007–08	34	—	45	—	5	194.8	1.3	12.07
2008–09	67	—	238	—	60	16.8	3.6	8.00
2009–10	19	95	21	—	124	8.1	1.1	15.00
2010–11	33	200	76	—	71	14.0	2.3	15.00
2011–12	11	221	14	29	135	7.4	3.9	8.25
2012–13	17	137	17	0	156	6.4	1.0	14.48
2013–14	13	206	17	17	230	4.3	2.6	13.51
2014–15	25	285	114	0	65	15.5	4.6	9.80
2015–16	33	321	55	4	145	6.9	1.8	6.09
2016–17	8	63	50	0	20	50.5	6.3	5.51
2017–18	23	155	47	7	130	7.7	2.3	8.65
2018–19	15	115	69	0	41	24.5	4.6	—
2019–20	6	68	8	0	205	4.9	1.3	—
2020–21	13	26	20	0	87	11.5	1.5	—
Average	29	158	62	6	101	26.3	2.8	10.32

\*Trappers and skunks per trapper include hunters and their harvest. Set-days per skunk and skunks per 1000 set-days are based only on trapping activity, and do not include hunt harvest or hunter-days afield.

Statewide spotted skunk\* harvest trends, Utah 2005–2021.



\*Prior to 2005–06, spotted skunk harvest and trapping activity were combined with striped skunk.

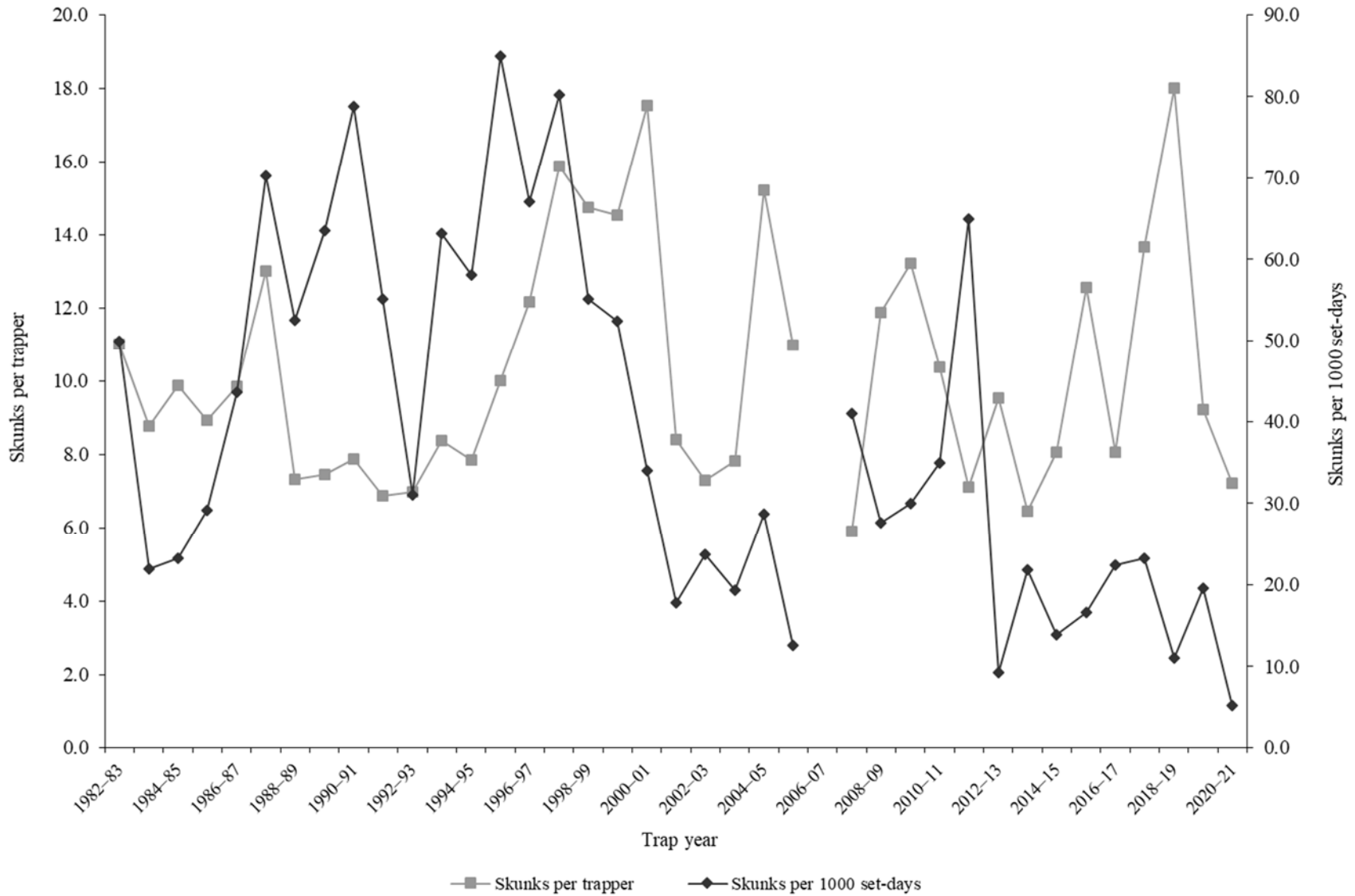
## STRIPED SKUNK

Statewide striped skunk harvest statistics\*, Utah 1982–2021.

Trap year	Trappers afield	Incidental harvest	Trap harvest	Hunt harvest	Set-days / skunk	Skunks / 1000 set-days	Skunks / trapper	Pelt price (\$)
1982–83	140	—	1540	—	20	49.9	11.0	3.00
1983–84	144	—	1262	—	45	22.0	8.8	2.85
1984–85	111	—	1097	—	43	23.3	9.9	2.17
1985–86	195	—	1741	—	34	29.1	8.9	—
1986–87	188	—	1851	—	23	43.6	9.8	—
1987–88	185	—	2404	—	14	70.2	13.0	1.05
1988–89	132	—	966	—	19	52.5	7.3	0.30
1989–90	173	—	1289	—	16	63.6	7.5	0.30
1990–91	82	—	645	—	13	78.8	7.9	0.30
1991–92	151	—	1037	—	18	55.2	6.9	4.00
1992–93	132	—	922	—	32	31.1	7.0	5.30
1993–94	175	—	1465	—	16	63.2	8.4	7.35
1994–95	183	—	1438	—	17	58.1	7.9	9.29
1995–96	175	—	1753	—	12	84.9	10.0	6.63
1996–97	142	—	1726	—	15	67.1	12.2	6.00
1997–98	182	—	2890	—	12	80.2	15.9	4.11
1998–99	219	—	3227	—	18	55.1	14.7	5.67
1999–00	188	—	2730	—	19	52.3	14.5	8.50
2000–01	220	—	3857	—	29	34.0	17.5	8.69
2001–02	214	—	1798	—	56	17.8	8.4	6.79
2002–03	237	—	1732	—	42	23.7	7.3	4.24
2003–04	295	—	2305	—	52	19.3	7.8	10.00
2004–05	280	—	4264	—	35	28.7	15.2	4.64
2005–06	95	—	1043	—	79	12.6	11.0	5.37
2006–07	138	—	—	—	—	—	—	6.07
2007–08	144	—	848	—	24	41.0	5.9	4.52
2008–09	143	—	1697	—	36	27.6	11.9	3.15
2009–10	124	1632	1638	—	33	30.0	13.2	6.47
2010–11	154	1136	1597	—	29	35.0	10.4	5.29
2011–12	107	916	602	160	15	65.0	7.1	4.55
2012–13	137	1159	1241	65	108	9.3	9.5	5.01
2013–14	108	1272	654	44	46	21.8	6.5	6.96
2014–15	82	1230	645	16	72	13.9	8.1	4.94
2015–16	111	818	1187	206	60	16.6	12.5	4.40
2016–17	65	727	521	3	45	22.4	8.1	5.95
2017–18	115	919	1198	373	43	23.2	13.7	6.16
2018–19	63	430	1052	82	90	11.1	18.0	12.15
2019–20	70	607	562	83	51	19.6	9.2	9.60
2020–21	94	573	632	46	189	5.3	7.2	—
Average	151	952	1554	108	40	38.4	10.3	5.33

\*Trappers and skunks per trapper include hunters and their harvest. Set-days per skunk and skunks per 1000 set-days are based only on trapping activity, and do not include hunt harvest or hunter-days afield.

Statewide striped skunk\* harvest trends, Utah 1982–2021.



\*Prior to 2005–06, harvest and trapping activity included both striped skunk and spotted skunk.



Striped skunk trapping harvest statistics by county and ecoregion, Utah 2020–2021.

County	n	Trappers afield	Trap harvest	Traps set	Trapping days	Set-days	Set-days / skunk	Skunks / 1000 set-days	Skunks / trapper
Beaver	0	0	—	—	—	—	—	—	—
Box Elder	2	7	13	150	150	293	22.5	44.4	2.0
Iron	0	0	—	—	—	—	—	—	—
Juab	0	0	—	—	—	—	—	—	—
Millard	1	3	7	10	196	587	90.0	11.1	2.0
Tooele	0	0	—	—	—	—	—	—	—
Great Basin totals	3	10	20	160	345	880	45.0	22.2	2.0
Cache	1	3	16	16	98	489	30.0	33.3	5.0
Davis	1	3	65	33	65	652	10.0	100.0	20.0
Morgan	1	3	29	10	10	29	1.0	1000.0	9.0
Piute	0	0	—	—	—	—	—	—	—
Rich	0	0	—	—	—	—	—	—	—
Salt Lake	0	0	—	—	—	—	—	—	—
Sanpete	2	7	150	29	205	1202	8.0	124.7	23.0
Sevier	0	0	—	—	—	—	—	—	—
Summit	2	7	72	192	1271	66275	924.5	1.1	11.0
Utah	4	13	26	68	215	1795	68.9	14.5	2.0
Wasatch	1	3	26	130	1062	42489	1630.0	0.6	8.0
Weber	3	10	75	46	212	1287	17.2	58.2	7.7
Rocky Mountain totals	15	49	459	525	3138	114219	248.6	4.0	9.4
Daggett	0	0	—	—	—	—	—	—	—
Duchesne	1	3	20	13	196	782	40.0	25.0	6.0
Uintah	3	10	55	52	166	1294	23.4	42.8	5.7
Uintah Basin totals	4	13	75	65	362	2076	27.7	36.1	5.8
Carbon	1	3	10	16	98	489	50.0	20.0	3.0
Emery	1	3	59	23	196	1369	23.3	42.9	18.0
Garfield	0	0	—	—	—	—	—	—	—
Grand	0	0	—	—	—	—	—	—	—
Kane	0	0	—	—	—	—	—	—	—
San Juan	1	3	10	3	192	192	19.7	50.8	3.0
Washington	0	0	—	—	—	—	—	—	—
Wayne	0	0	—	—	—	—	—	—	—
Colorado Plateau totals	3	10	79	42	485	2050	26.2	38.2	8.0
Unknown	0	0	—	—	—	—	—	—	—
Statewide totals*	24	78	632	792	4330	119224	188.6	5.3	8.1

\*Statewide totals for sample size and trappers afield are not totals of the columns because trappers trapped multiple counties.

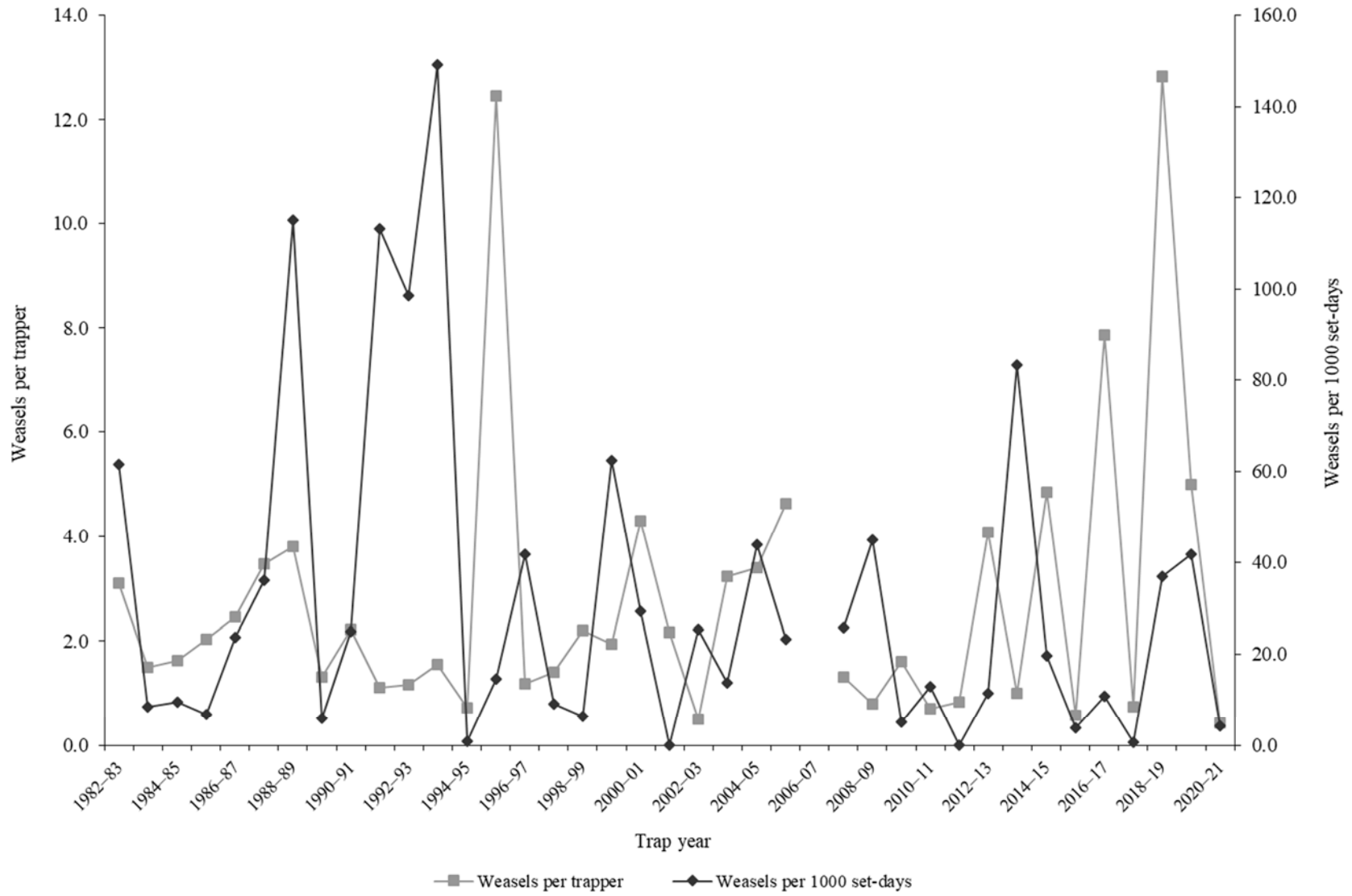
## WEASEL

Statewide weasel harvest statistics\*, Utah 1982–2021.

Trap year	Trappers afield	Incidental harvest	Trap harvest	Hunt harvest	Set-days / weasel	Weasels / 1000 set-days	Weasels / trapper	Pelt price (\$)
1982–83	19	—	59	—	16	61.5	3.1	1.00
1983–84	22	—	33	—	117	8.5	1.5	0.00
1984–85	46	—	75	—	106	9.4	1.6	0.75
1985–86	33	—	67	—	149	6.7	2.0	0.00
1986–87	50	—	123	—	42	23.6	2.5	1.50
1987–88	61	—	212	—	28	36.1	3.5	1.18
1988–89	24	—	91	—	9	115.0	3.8	0.25
1989–90	25	—	33	—	166	6.0	1.3	0.25
1990–91	14	—	31	—	40	24.8	2.2	0.30
1991–92	17	—	19	—	9	113.1	1.1	0.30
1992–93	24	—	28	—	10	98.6	1.2	0.30
1993–94	20	—	31	—	7	149.0	1.6	5.11
1994–95	18	—	13	—	1189	0.8	0.7	1.57
1995–96	24	—	299	—	69	14.6	12.5	3.08
1996–97	11	—	13	—	24	41.7	1.2	7.40
1997–98	20	—	28	—	111	9.0	1.4	3.03
1998–99	15	—	33	—	157	6.4	2.2	5.50
1999–00	34	—	66	—	16	62.4	1.9	—
2000–01	36	—	155	—	34	29.3	4.3	8.50
2001–02	6	—	13	—	0	—	2.2	—
2002–03	6	—	3	—	39	25.4	0.5	4.76
2003–04	18	—	58	—	73	13.8	3.2	—
2004–05	25	—	85	—	23	43.9	3.4	2.90
2005–06	41	—	190	—	43	23.3	4.6	—
2006–07	49	—	—	—	—	—	—	6.26
2007–08	11	—	15	—	39	25.6	1.3	2.99
2008–09	14	—	11	—	22	44.9	0.8	—
2009–10	29	13	47	—	196	5.1	1.6	7.64
2010–11	23	20	17	—	78	12.8	0.7	7.21
2011–12	25	4	0	21	—	0.0	0.8	4.58
2012–13	27	21	110	0	87	11.5	4.1	—
2013–14	3	10	3	0	12	83.3	1.0	5.00
2014–15	13	13	63	0	51	19.7	4.8	3.89
2015–16	26	15	11	4	258	3.9	0.6	3.06
2016–17	29	8	228	0	93	10.7	7.9	3.55
2017–18	19	7	12	2	1795	0.6	0.7	1.00
2018–19	11	26	139	2	27	37.0	12.8	—
2019–20	2	4	10	0	24	41.7	5.0	9.18
2020–21	16	3	7	0	233	4.3	0.4	—
Average	23	12	64	3	146	33.1	2.8	3.29

\*Trappers and weasels per trapper include hunters and their harvest. Set-days per weasel and weasels per 1000 set-days are based only on trapping activity, and do not include hunt harvest or hunter-days afield.

Statewide weasel harvest trends, Utah 1982–2021.



**APPENDIX: UTAH FURBEARER MANAGEMENT ECOREGIONS**

