

UTAH FURBEARER ANNUAL REPORT 2016-17



Publication No. 17-18



UTAH FURBEARER ANNUAL REPORT 2016–17

Prepared by:

Heather H. Bernales
Biometrician

and

Darren DeBlois
Mammals Program Coordinator

Publication No. 17-18

Annual Performance Report for Federal Aid Project W-65-M, segment 65

State of Utah
Department of Natural Resources
DIVISION OF WILDLIFE RESOURCES

Gregory Sheehan
Director

TABLE OF CONTENTS

Definitions.....	1
Introduction.....	2
Methods.....	2
Results.....	3
Harvest by species.....	11
Badger.....	12
Beaver.....	14
Bobcat.....	17
Coyote.....	27
Gray fox.....	31
Kit fox.....	34
Marten.....	36
Mink.....	39
Muskrat.....	41
Raccoon.....	44
Red fox.....	48
Ringtail.....	52
Spotted skunk.....	54
Striped skunk.....	56
Weasel.....	59
Appendix: Utah furbearer management ecoregions.....	61

DEFINITIONS

Incidental harvest: Furbearers harvested in traps that were intended for a different furbearer species.

Trap year: Time frame corresponding to the 2016–17 furbearer seasons, as outlined in the 2016–17 Utah Furbearer Guidebook.

Trappers afield: Number of furbearer license holders who trapped furbearers during a particular trap year. License holders who took furbearers by means other than trapping, including shooting or with the aid of dogs, are included in this figure except for bobcat.

Total harvest: Number of furbearers of a particular species taken by means of trapping and hunting by furbearer license holders. This figure does not include harvest of unprotected wildlife, such as coyote, muskrat, red fox, raccoon, or striped skunk, taken by persons who did not purchase a furbearer license, nor does it include harvest of furbearers taken for creating a nuisance or causing damage.

Total set-days: Number of traps set during the furbearer season for the trapping of a particular species, multiplied by the number of days these traps were in the field. This figure pertains only to trapping, and does not include days afield by furbearer hunters or pursuers.

Pelt price: Average price paid for pelts of a specific furbearer species harvested in Utah, obtained mainly from a summary of the prices bid at the Utah Trappers Association fur auction, as well as prices from a survey of registered furdealers buying pelts harvested in Utah.

Wildlife Services harvest (coyote only): Number of coyotes taken by USDA-APHIS Wildlife Services in a particular year. Prior to 2006–07, Wildlife Services yearly harvest summaries applied to their fiscal year, which begins October 1 and ends September 30, although most harvest takes place during spring. Beginning in 2006–07, Wildlife Services harvest is reported for the period July 1 to June 30 of the following year.

INTRODUCTION

The furbearer harvest report presents furbearer harvest and trapper/hunter effort trends across the state of Utah, based on data collected from furbearer trappers and hunters. This report represents the furbearer portion of the Annual Performance Report for Federal Aid Project W-65-M, segment 65, grant agreement period July 1, 2016 through June 30, 2017. This Federal Aid project covers the 2016–17 trapping seasons. Additionally this report presents statewide trends since the early 1980s and population trend indicators for bobcats as well as the estimated economic value of Utah’s furbearer harvest each year. Furbearer harvest and trapper/hunter effort may have been more driven by pelt price than by availability, so annual fur harvest should not be used as the sole means to assess/project population sizes.

Furbearers included badger, beaver, bobcat, gray fox, kit fox, mink, marten, ringtail, spotted skunk, and weasel. A furbearer license was required to harvest any of these species, and additional permits were required to harvest bobcats and martens. There were no bag limits for furbearers, except bobcats. Each bobcat permit allowed a person to harvest one bobcat, and a single person could obtain up to 6 bobcat permits in 2016–17. Sales of bobcat permits were not capped. Season dates for badger, gray fox, kit fox, marten, ringtail, spotted skunk, and weasel were September 24, 2016 through March 1, 2017. Bobcat season was November 16, 2016 through March 1, 2017. Season dates for beaver and mink were September 24, 2016 through April 5, 2017.

Coyote, muskrat, red fox, raccoon, and striped skunk were not under the jurisdiction of the Division, and/or were unprotected. Those species could be taken year round without a license; therefore, results presented in this report do not include harvest by persons who did not purchase a furbearer license. It was prohibited to take black-footed ferret, fisher, lynx, river otter, wolf, and wolverine.

METHODS

Furbearer harvest and effort information was obtained from a telephone/web mixed-mode survey of a statistically-valid random sample of furbearer license holders. The accuracy of that survey was dependent upon the following assumptions: (1) a random sample was achieved (i.e., there was no response bias by those who harvested successfully versus those who did not), (2) respondents recorded or remembered data accurately and did not guess or lie, and (3) respondents clearly understood the questions.

Trappers who harvested bobcats and martens were required to bring the animals’ pelts to a Division office or officer to have permanent tags attached and to surrender the lower jaws. Bobcat and marten harvest data presented in this report, such as county of kill and sex of harvest, were collected at that time; as such, that information was not projected. Additional information on bobcat harvest, such as harvest effort by method, trappers-afield, number of sets, and number of days was determined by the survey mentioned in the preceding paragraph. Due to the small number of marten trappers in Utah, we did not attempt to survey marten trappers. Instead, since a separate permit is required to trap marten, we assumed that all those who purchased a marten permit attempted to trap marten.

To determine age structure of the bobcat harvest, a canine tooth from each bobcat jaw was sectioned, and aged using cementum annuli by Matson's Lab in Manhattan, Montana. Survival rates were estimated using the Chapman-Robson estimator. Pelt prices were obtained mainly from a summary of the prices bid at the Utah Trappers Association fur auction, as well as from a survey of registered furdealers buying pelts harvested in Utah.

Because some furbearer species in Utah were rare or not highly sought after by trappers, it was not possible to achieve sufficient sample sizes for these species to make valid statistical inferences. Although the trends for statewide harvest and effort were still valid, at the county level, the harvest and effort estimates had low precision and were likely inaccurate. As such, results by county were only reported for species with a sample size ≥ 20 .

Corrections and Clarifications

In an effort to obtain information on how many furbearers of a given species were taken incidentally, furbearer trappers were asked the question "Did you harvest any [species] in traps that were set for a different species, and, if so, how many?" Prior to 2009–10, all incidental harvest was included in the total harvest and harvest effort statistics. In the 2009–10 and 2010–11 annual reports, incidental harvest was included in statewide summaries of total furbearer harvest, but not in species-specific tables. This omission in 2009–10 and 2010–11 caused some confusion because harvest totals did not match between tables. Furthermore, comparisons of species-specific trapping harvest with prior years' numbers were confounded. This annual report was modified, beginning with the 2011–12 report, to include incidental harvest in species-specific statewide historical harvest tables, as well as split out hunt harvest from trapping harvest.

RESULTS

License Sales and General Survey Results

Furbearer licenses were valid for 365 days from the date of purchase. We used the 365-day period of April 1 to March 31 to determine the total number of furbearer licenses sold for the furbearer season. A total of 2,132 furbearer licenses were sold for the 2016–17 season. The percentage of license holders who bought a furbearer license but did not attempt to harvest furbearers was 31%. The number of trappers afield in 2016–17 was 1,468.

Furbearer Harvest, Historical Trends, and Economic Value

The majority of the harvest taken by furbearer license holders in 2016–17 was of non-protected species—coyote, muskrat, and raccoon—and the total harvest of these species has fluctuated considerably over the last ten years. Total harvest of regulated furbearer species (i.e., species with designated trapping seasons) was 4,793 in 2016–17, lower than the 10-yr average of 5,677. The estimated economic value of Utah's furbearer harvest in 2016–17 was \$794,363.

Furbearer license sales and survey responses, Utah 1982–2016.

Trap year	Furbearer licenses sold			License holders surveyed		Projection factor	% license holders not afield
	Resident	Nonresident	Total	Total	Percent (%)		
1982–83	—	—	1325	664	50.1	—	—
1983–84	—	—	1367	616	45.1	—	—
1984–85	—	—	1491	806	54.1	—	—
1985–86	—	—	1424	680	47.8	—	—
1986–87	—	—	1342	585	43.6	—	—
1987–88	—	—	1576	731	46.4	—	—
1988–89	—	—	1318	721	54.7	—	—
1989–90	—	—	1084	597	55.1	—	—
1990–91	—	—	949	513	54.1	—	30.0
1991–92	—	—	1210	689	56.9	—	2.2
1992–93	—	—	1426	857	60.1	—	16.0
1993–94	—	—	1315	—	—	—	—
1994–95	—	—	1287	585	45.5	—	7.0
1995–96	—	—	1240	683	55.1	—	21.2
1996–97	—	—	1131	606	53.6	—	25.4
1997–98	—	—	1190	498	41.8	—	19.5
1998–99	—	—	1191	395	33.2	—	19.8
1999–00	1172	39	1211	458	37.8	2.6	11.6
2000–01	1204	20	1224	420	34.3	2.9	12.4
2001–02	956	21	977	302	30.9	3.2	11.6
2002–03	1409	40	1449	514	35.5	2.8	16.3
2003–04	1729	47	1776	597	33.6	3.0	16.9
2004–05	1830	65	1895	615	32.5	3.1	18.2
2005–06	1631	57	1688	260	15.4	6.5	27.7
2006–07	2029	81	2110	262	12.4	8.1	26.7
2007–08	2085	55	2140	563	26.3	3.8	31.8
2008–09	2045	57	2102	750	35.7	2.8	34.8
2009–10	1902	34	1936	798	41.2	2.4	30.2
2010–11	1788	29	1817	555	30.5	3.3	30.1
2011–12	1856	36	1892	531	28.1	3.6	33.3
2012–13	2080	52	2132	622	29.2	3.4	34.4
2013–14	2389	60	2449	726	29.6	3.4	35.4
2014–15	2802	67	2869	907	31.6	3.2	41.1
2015–16	2580	52	2632	714	27.1	3.7	35.6
2016–17	2078	54	2132	815	38.2	2.6	31.2
Average	1865	48	1608	607	39.6	2.9	23.9

Statewide total furbearer harvest* estimates by species, Utah 2007–2017.

Species	Trap year										Average 2007–17
	2007–08	2008–09	2009–10	2010–11	2011–12	2012–13	2013–14	2014–15	2015–16	2016–17	
Badger	275	287	334	309	217	302	371	417	648	486	365
Beaver	745	1165	1910	1052	1026	2276	2021	1388	1511	973	1407
Bobcat	2437	2062	1167	1002	1245	1365	1870	2919	1683	1856	1761
Coyote	7637	6945	6674	8128	5296	5749	5784	6873	8001	5124	6621
Gray fox	1093	1747	1392	907	1002	1288	1318	1015	1106	625	1149
Kit fox	39	104	51	45	110	373	14	145	99	154	113
Marten	21	4	2	36	14	26	16	22	9	2	15
Mink	186	242	395	636	221	867	1012	341	188	246	433
Muskrat	1665	1198	5505	7698	8266	13650	8764	6092	6175	3163	6218
Raccoon	3990	2368	5018	5946	4141	6239	5482	5437	4748	3628	4700
Red fox	1130	872	2657	2864	2273	2056	2517	2272	1880	1625	2015
Ringtail	108	59	109	62	28	62	101	64	70	102	77
Spotted skunk	45	238	116	276	264	154	240	399	380	113	223
Striped skunk	848	1697	3270	2733	1679	2465	1970	1875	2211	1250	2000
Weasel	15	11	60	37	25	131	13	76	30	236	63

*Total harvest includes incidental take.

Statewide furbearer trapping harvest statistics* by species, Utah 2016–17.

Species	Trappers afield	Trap harvest	Set-days	Set-days / furbearer	Furbearers / 1000 set-days	Furbearers / trapper	Pelt price (\$)
Badger	47	233	8593	36.9	27.1	4.9	10.28
Beaver	173	970	20963	21.6	46.3	5.6	11.20
Bobcat	571	1657	402966	243.2	4.1	2.9	273.23
Coyote	322	2244	350231	156.0	6.4	7.0	37.26
Gray fox	76	356	53420	150.2	6.7	4.7	15.42
Kit fox	10	123	2475	20.1	49.7	11.8	10.32
Marten	89	2	—	—	—	—	—
Mink	50	196	9056	46.2	21.7	3.9	7.52
Muskrat	126	3069	59288	19.3	51.8	24.4	3.78
Raccoon	220	2734	149886	54.8	18.2	12.4	4.92
Red fox	144	1175	292633	249.1	4.0	8.2	16.16
Ringtail	18	84	1209	14.4	69.3	4.6	23.47
Spotted skunk	8	50	984	19.8	50.5	6.3	5.51
Striped skunk	60	521	23222	44.6	22.4	8.7	5.95
Weasel	26	228	21176	93.0	10.7	8.7	3.55

*Does not include incidental harvest.

Statewide furbearer hunting harvest by species, Utah 2016–17.

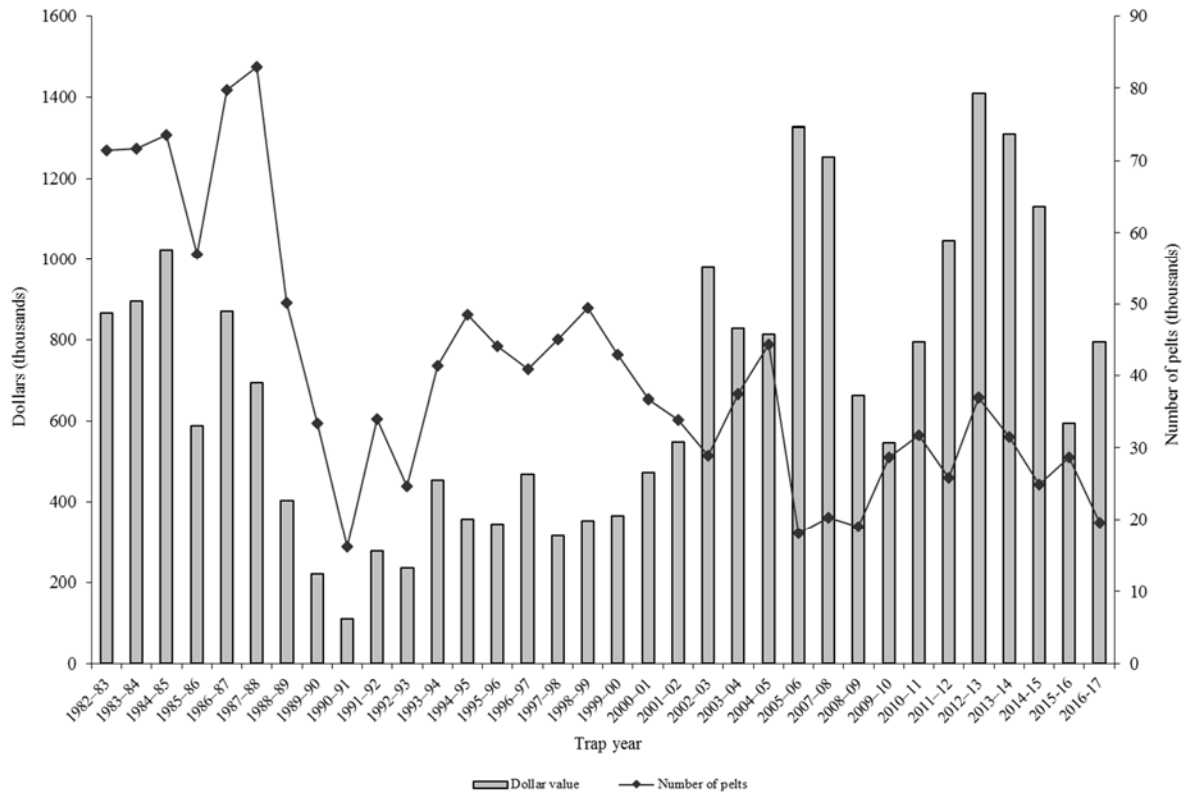
Species	Hunters afield	Hunt harvest	Hunting days	Days / furbearer	Furbearers / hunter
Badger	31	31	133	4.3	1.0
Beaver	3	0	28	—	0.0
Bobcat	267	199	3446	17.3	0.7
Coyote	371	2595	8263	7.0	7.0
Gray fox	8	3	55	0.3	0.3
Kit fox	3	0	44	—	0.0
Mink	10	21	21	1.0	3.6
Muskrat	3	3	3	1.0	2.0
Raccoon	63	371	2340	6.3	5.9
Red fox	68	99	740	7.4	1.5
Ringtail	0	—	—	—	—
Spotted skunk	0	—	—	—	—
Striped skunk	5	3	3	1.0	0.5
Weasel	3	0	8	—	0.0

Number of furbearers harvested in traps set for other species, Utah 2016–17.

Species	Incidental harvest	Trap / hunt harvest	Total harvest	% incidental harvest
Badger	222	264	486	45.7
Beaver	3	970	973	0.3
Bobcat	53	1856	1856	2.9
Coyote	285	4839	5124	5.6
Gray fox	267	358	625	42.7
Kit fox	31	123	154	20.1
Marten	0	2	2	0.0
Mink	29	217	246	11.8
Muskrat	92	3071	3163	2.9
Raccoon	523	3105	3628	14.4
Red fox	351	1274	1625	21.6
Ringtail	18	84	102	17.6
Spotted skunk	63	50	113	55.8
Striped skunk	727	523	1250	58.2
Weasel	8	228	236	3.4
Total	2672	16964	19583	13.6

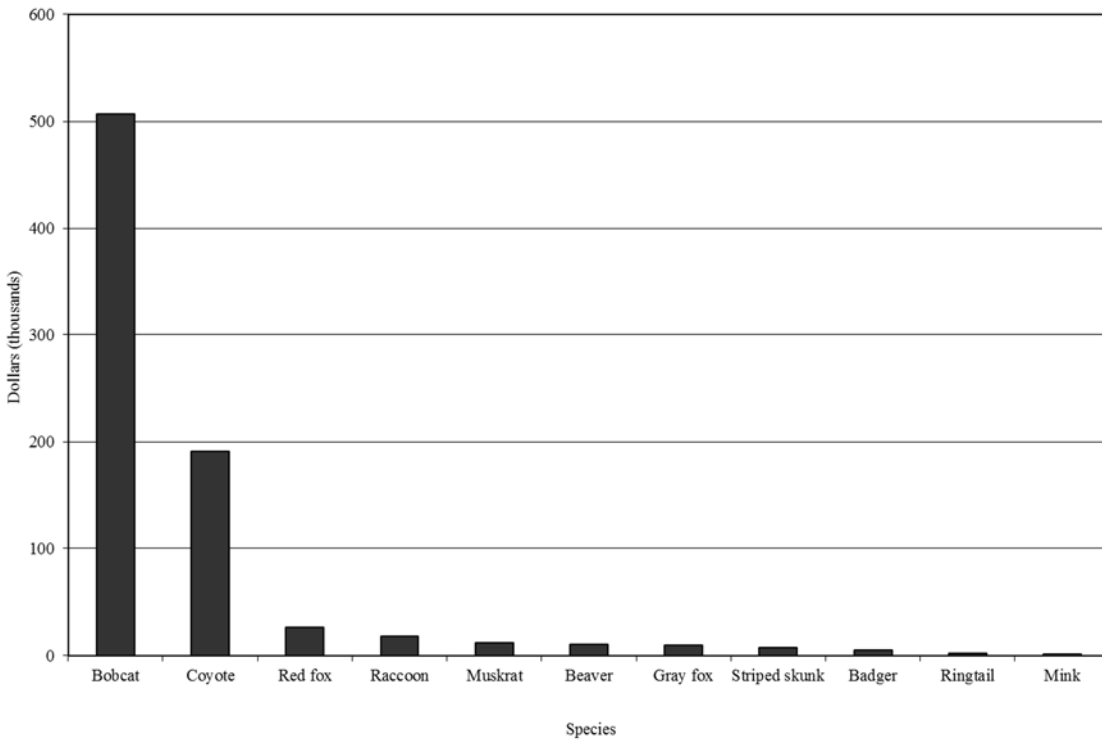
*Incidental bobcat harvest is accounted for in trap harvest.

Estimated economic value of the furbearer harvest taken by trappers in Utah, 1982–2017.



*No data available for 2007.

Proportional economic value of the furbearer harvest taken by trappers in Utah, by species, 2016–17.



Economic value* (in dollars) of furbearer species in Utah's annual furbearer harvest, Utah 1982–2017.

Trap year	Species														Total economic value (\$)
	Badger	Beaver	Bobcat	Coyote	Gray fox	Kit fox	Marten	Mink	Muskrat	Raccoon	Red fox	Ringtail	Skunk	Weasel	
1982–83	5945	20418	434340	203240	37352	7244	10	4394	119096	10526	16391	1430	4620	59	865064
1983–84	4794	25211	498960	152358	34353	8369	1680	3460	136033	11105	14869	1497	3597	0	896285
1984–85	6794	43796	511464	193809	48147	7272	288	4948	133589	18208	32220	794	22126	56	1023511
1985–86	1964	47463	301410	95322	21147	4568	2783	5022	72903	13751	21386	433	0	0	588152
1986–87	3239	93684	316416	166417	36848	5415	565	8802	157919	30439	49262	746	0	185	869938
1987–88	2772	69184	250635	107590	35779	5751	2000	12703	144058	24645	34765	643	2524	250	693300
1988–89	1943	27264	230282	27104	14837	4488	310	9129	46760	23932	16070	1060	290	23	403492
1989–90	1749	40991	85986	28913	5825	1164	0	7018	15039	14242	17550	350	387	8	219223
1990–91	1250	10066	45849	20892	2060	869	0	3437	6463	5375	12636	347	194	9	109446
1991–92	2015	13338	100672	65100	2762	520	0	4924	31275	10729	39194	708	4148	6	275390
1992–93	2308	7399	105390	57740	2988	821	0	2850	13715	4757	31635	425	4887	8	234924
1993–94	1709	16888	148962	128971	8244	1412	0	3970	42502	15768	74511	259	10768	158	454120
1994–95	4555	32270	90536	65890	7417	3425	0	2933	49362	18332	67159	1019	13359	20	356277
1995–96	2904	20502	71241	67722	8818	1363	0	5502	54883	23516	74399	947	11622	613	344032
1996–97	2888	27474	127995	75238	4257	1097	0	2946	83902	56444	74710	537	10356	96	467939
1997–98	1786	39328	75138	34862	3019	336	0	1958	54083	49790	42345	170	11878	85	314778
1998–99	5393	27642	116859	46840	6055	1228	43	2453	37878	38437	50120	575	18297	182	352002
1999–00	5646	20093	118175	67181	6124	531	0	2543	21086	30147	69531	710	23205	—	364973
2000–01	7731	20557	187868	71461	9272	987	—	2303	16394	29298	90184	708	33517	1318	471598
2001–02	4290	18326	275534	70404	15355	1833	—	1477	38945	30431	78140	1039	12208	—	547983
2002–03	7428	16288	588238	177649	24217	1643	—	555	10071	22486	124008	598	7344	14	980538
2003–04	8480	25112	411826	171428	18959	3432	0	5384	16920	59889	83827	656	23050	0	828964
2004–05	5901	37056	433104	144177	13009	2326	0	2847	23575	41889	88152	1412	19785	247	813480
2005–06	1802	39742	1049147	128773	14562	1998	—	2213	3271	32419	45632	959	6374	—	1326894
2007–08	4970	13037	946596	166006	42838	307	—	1736	5067	43288	24200	1604	4375	45	1254069

*Economic value was determined by multiplying average pelt price by total harvest for a given species.

Species with missing values contributed to Utah's annual furbearer harvest but were not included in the economic value estimate due to missing average pelt price or harvest data. No data was available for 2006–07. From 2001 to 2005, average striped skunk pelt price was used to calculate all skunk (spotted and striped) economic value.

Economic value* (in dollars) of furbearer species in Utah's annual furbearer harvest, Utah 1982–2017 (continued).

Trap year	Species														Total economic value (\$)
	Badger	Beaver	Bobcat	Coyote	Gray fox	Kit fox	Marten	Mink	Muskrat	Raccoon	Red fox	Ringtail	Skunk	Weasel	
2008–09	4996	15319	492186	75399	29816	791	—	1442	2988	14713	15676	631	7256	—	661214
2009–10	6458	22160	261073	98766	23047	483	—	3160	27148	35589	43366	1635	22895	458	546238
2010–11	5338	13421	369686	203226	19019	571	972	7170	41555	48575	64790	1173	18607	267	794368
2011–12	4435	16017	567920	230005	23177	1594	550	3333	60140	32162	96534	342	9823	114	1046146
2012–13	5225	46112	765710	227430	40152	5360	1462	16629	110710	87845	87380	971	14580	—	1409567
2013–14	5834	28951	761918	216267	31870	200	519	16406	76492	52102	101665	1809	16949	65	1311048
2014–15	4875	16101	651258	315333	16402	1034	483	2922	22906	29686	55210	1105	13173	296	1130784
2015–16	4944	11272	255193	237070	11890	647	—	793	11671	19467	28896	879	12043	92	594857
2016–17	4996	10898	507115	190920	9638	1589	—	1850	11956	17850	26260	2394	8060	838	794364
Average	4334	27452	357491	127338	18507	2373	467	4683	50010	29348	52726	899	10950	190	686616

*Economic value was determined by multiplying average pelt price by total harvest for a given species.

Species with missing values contributed to Utah's annual furbearer harvest but were not included in the economic value estimate due to missing average pelt price or harvest data.

HARVEST BY SPECIES

BADGER

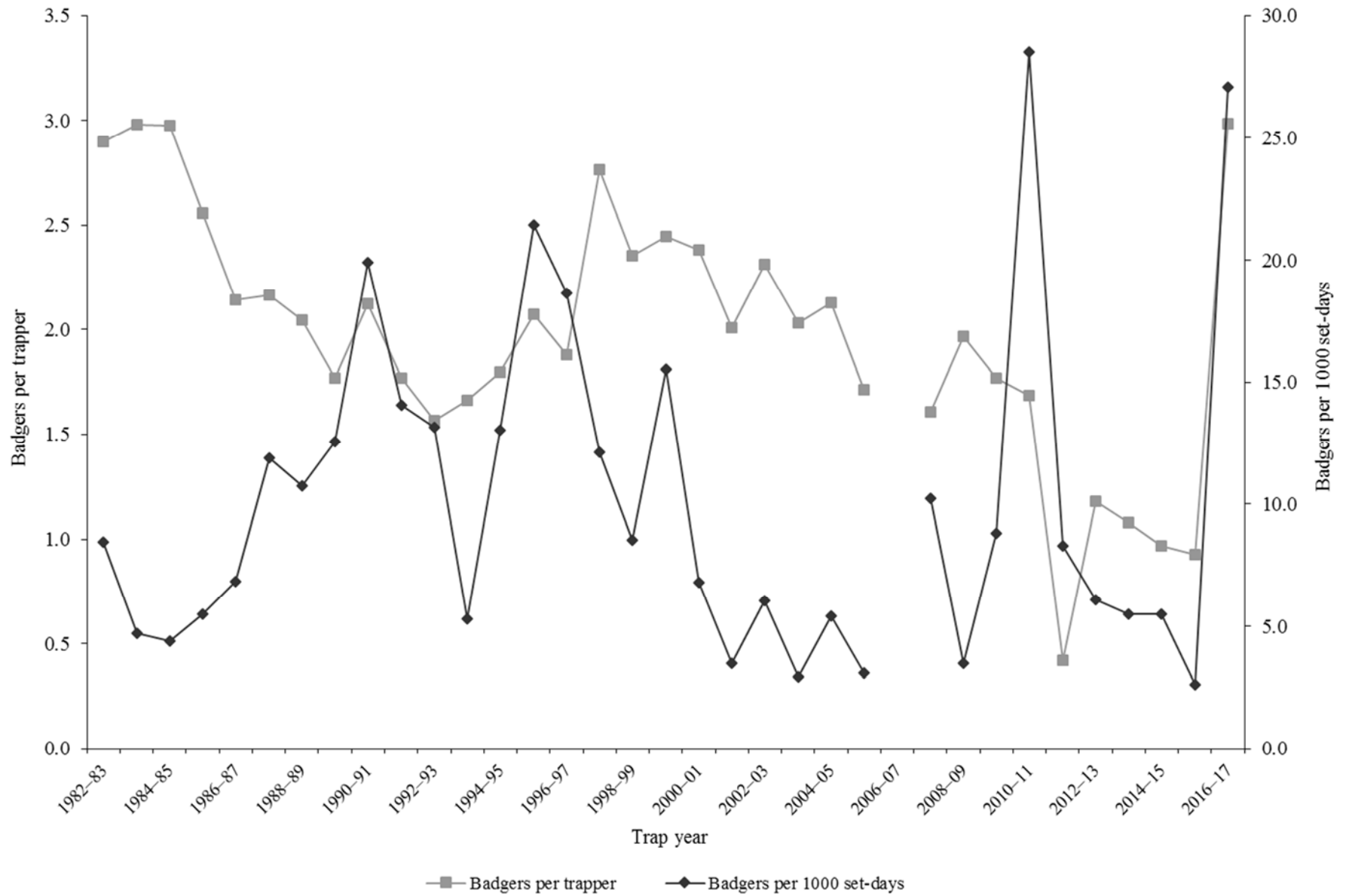
Statewide badger harvest statistics*, Utah 1982–2017.

Trap year	Trappers afield	Incidental harvest	Trap harvest	Hunt harvest	Set-days / badger	Badgers / 1000 set-days	Badgers / trapper	Pelt price (\$)
1982–83	250	—	725	—	118	8.5	2.9	8.20
1983–84	188	—	560	—	212	4.7	3.0	8.56
1984–85	225	—	670	—	227	4.4	3.0	10.14
1985–86	194	—	496	—	182	5.5	2.6	3.96
1986–87	198	—	424	—	146	6.8	2.1	7.64
1987–88	212	—	459	—	84	11.9	2.2	6.04
1988–89	204	—	417	—	93	10.7	2.0	4.66
1989–90	207	—	366	—	80	12.5	1.8	4.78
1990–91	81	—	172	—	50	19.9	2.1	7.27
1991–92	134	—	237	—	71	14.1	1.8	8.50
1992–93	148	—	232	—	76	13.2	1.6	9.95
1993–94	143	—	238	—	188	5.3	1.7	7.18
1994–95	182	—	327	—	77	13.0	1.8	13.93
1995–96	133	—	276	—	47	21.4	2.1	10.52
1996–97	118	—	222	—	54	18.7	1.9	13.01
1997–98	98	—	271	—	83	12.1	2.7	6.59
1998–99	135	—	318	—	117	8.5	2.4	16.96
1999–00	177	—	433	—	64	15.5	2.4	13.04
2000–01	189	—	450	—	147	6.8	2.4	17.18
2001–02	137	—	275	—	288	3.5	2.0	15.60
2002–03	234	—	541	—	165	6.0	2.3	13.73
2003–04	223	—	453	—	341	2.9	2.0	18.72
2004–05	203	—	432	—	184	5.4	2.1	13.66
2005–06	70	—	120	—	324	3.1	1.7	15.02
2006–07	187	—	—	—	—	—	—	18.07
2007–08	171	—	275	—	98	10.2	1.6	14.14
2008–09	146	—	287	—	282	3.5	2.0	17.41
2009–10	78	196	138	—	113	8.8	1.8	19.34
2010–11	115	115	194	—	35	28.5	1.7	17.27
2011–12	110	82	46	89	120	8.3	0.4	20.44
2012–13	99	147	117	38	163	6.1	1.2	17.36
2013–14	91	216	98	57	180	5.5	1.1	15.73
2014–15	92	297	89	32	183	5.5	1.0	11.69
2015–16	103	464	140	44	384	2.6	0.9	7.63
2016–17	78	222	233	31	37	27.1	3.0	10.28
Average	154	217	316	49	147	10.0	2.0	12.12

Prior to the 2005–06 season, harvest by hunting and trapping were not collected separately and trapping harvest estimates included harvest by both hunters and trappers. Trap harvest includes incidental harvest.

*Trappers and badgers per trapper include hunters and their harvest. Set-days per badger and badgers per 1000 set-days are based only on trapping activity, and do not include hunt harvest or hunter-days afield.

Statewide badger harvest trends, Utah 1982–2017.



BEAVER

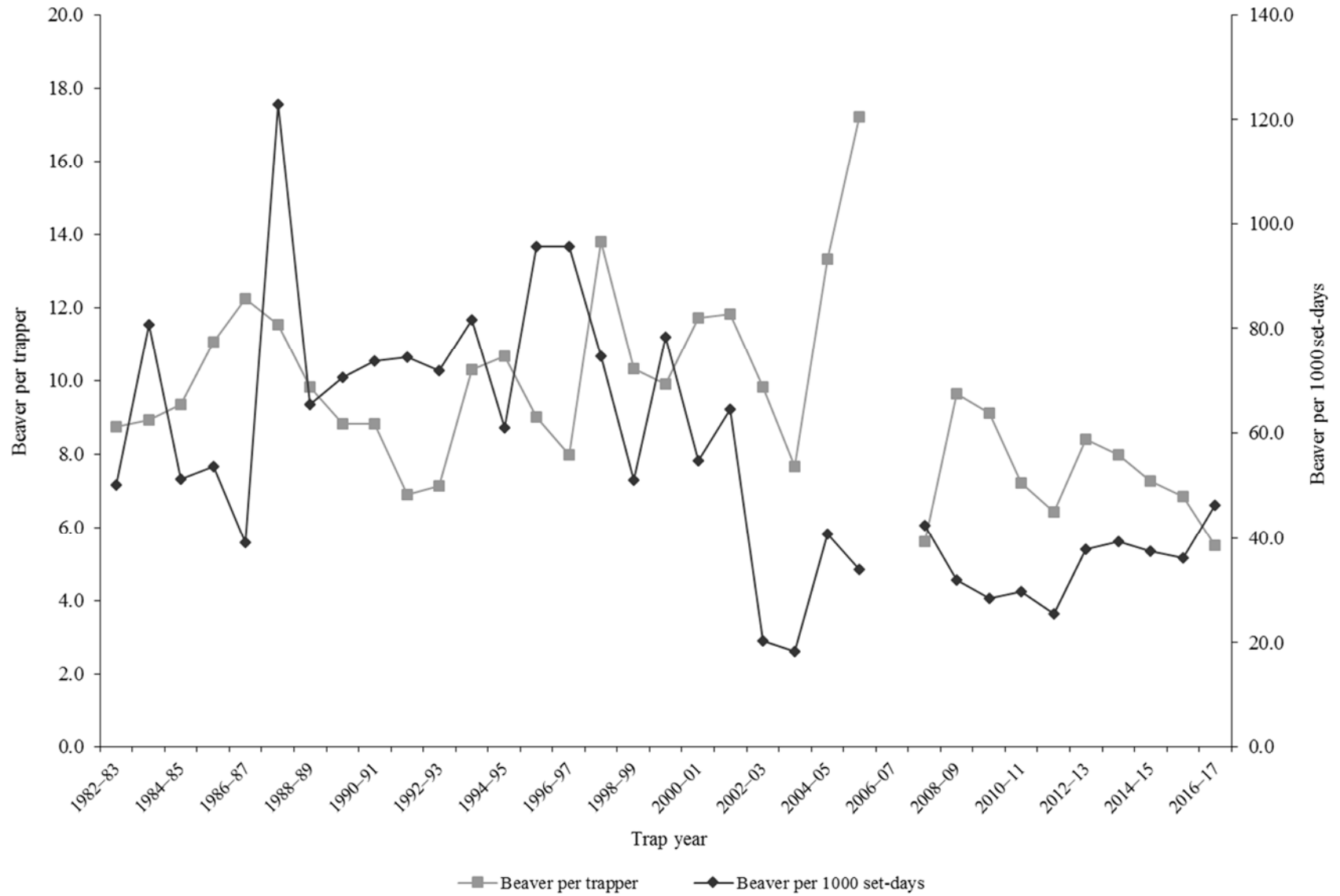
Statewide beaver harvest statistics*, Utah 1982–2017.

Trap year	Trappers afield	Incidental harvest	Trap harvest	Hunt harvest	Set-days / beaver	Beavers / 1000 set-days	Beavers / trapper	Pelt price (\$)
1982–83	181	—	1584	—	20	50.1	8.8	12.89
1983–84	200	—	1788	—	12	80.8	8.9	14.10
1984–85	285	—	2664	—	20	51.3	9.3	16.44
1985–86	293	—	3242	—	19	53.7	11.1	14.64
1986–87	338	—	4138	—	26	39.2	12.2	22.64
1987–88	409	—	4716	—	8	122.9	11.5	14.67
1988–89	277	—	2721	—	15	65.4	9.8	10.02
1989–90	390	—	3436	—	14	70.5	8.8	11.93
1990–91	176	—	1551	—	14	73.8	8.8	6.49
1991–92	216	—	1492	—	13	74.5	6.9	8.94
1992–93	134	—	956	—	14	71.9	7.1	7.74
1993–94	171	—	1761	—	12	81.6	10.3	9.59
1994–95	239	—	2551	—	16	61.0	10.7	12.65
1995–96	170	—	1530	—	10	95.7	9.0	13.40
1996–97	163	—	1299	—	10	95.7	8.0	21.15
1997–98	210	—	2896	—	13	74.6	13.8	13.58
1998–99	286	—	2950	—	20	51.0	10.3	9.37
1999–00	185	—	1830	—	13	78.4	9.9	10.98
2000–01	170	—	1992	—	18	54.7	11.7	10.32
2001–02	143	—	1689	—	16	64.5	11.8	10.85
2002–03	175	—	1720	—	49	20.3	9.8	9.47
2003–04	232	—	1781	—	55	18.2	7.7	14.10
2004–05	200	—	2664	—	25	40.7	13.3	13.91
2005–06	130	—	2239	—	29	33.9	17.2	17.75
2006–07	122	—	—	—	—	—	—	16.31
2007–08	133	—	745	—	24	42.5	5.6	17.50
2008–09	121	—	1165	—	31	31.9	9.6	13.15
2009–10	209	6	1904	—	35	28.5	9.1	11.60
2010–11	144	13	1039	—	34	29.8	7.2	12.76
2011–12	157	18	1008	—	39	25.4	6.4	15.61
2012–13	267	17	2245	14	26	37.9	8.4	20.26
2013–14	240	98	1913	10	25	39.3	8.0	14.33
2014–15	183	47	1332	9	27	37.5	7.3	11.60
2015–16	217	22	1486	4	28	36.1	6.8	7.46
2016–17	176	3	970	0	22	46.3	5.5	11.20
Average	210	28	2029	7	22	55.3	9.4	13.13

Prior to the 2005–06 season, harvest by hunting and trapping were not collected separately and trapping harvest estimates included harvest by both hunters and trappers. Trap harvest includes incidental harvest.

*Trappers and beavers per trapper include hunters and their harvest. Set-days per beaver and beavers per 1000 set-days are based only on trapping activity, and do not include hunt harvest or hunter-days afield

Statewide beaver harvest trends, Utah 1982–2017.



Beaver trapping harvest statistics by county and ecoregion, Utah 2016–17.

County	n	Trappers afield	Trap harvest	Traps set	Trapping days	Set-days	Set-days / beaver	Beavers / 1000 set-days	Beavers / trapper
Beaver	0	0	—	—	—	—	—	—	—
Box Elder	3	9	45	26	142	539	11.9	84.2	5.3
Iron	0	0	—	—	—	—	—	—	—
Juab	1	3	0	9	40	119	—	0.0	0.0
Millard	0	0	—	—	—	—	—	—	—
Tooele	0	0	—	—	—	—	—	—	—
Great Basin totals	4	11	45	34	182	658	14.5	69.0	4.0
Cache	11	31	133	128	599	3225	24.2	41.3	4.3
Davis	3	9	51	45	289	1867	36.6	27.4	6.0
Morgan	2	6	20	31	51	258	13.0	76.9	3.5
Piute	0	0	—	—	—	—	—	—	—
Rich	1	3	31	11	85	340	10.9	91.7	11.0
Salt Lake	1	3	0	11	9	34	—	0.0	0.0
Sanpete	2	6	3	20	40	210	74.0	13.5	0.5
Sevier	2	6	11	14	14	37	3.3	307.7	2.0
Summit	4	11	34	30	88	200	5.9	169.8	3.0
Utah	9	26	99	150	423	3061	30.8	32.4	3.9
Wasatch	3	9	45	45	105	669	14.8	67.8	5.3
Weber	7	20	247	159	369	4547	18.4	54.3	12.4
Rocky Mountain totals	45	128	675	646	2071	14450	21.4	46.7	5.3
Daggett	1	3	3	3	9	9	3.0	333.3	1.0
Duchesne	4	11	79	60	372	2122	26.7	37.4	7.0
Uintah	6	17	102	102	340	2658	26.0	38.4	6.0
Uintah Basin totals	11	31	184	165	721	4789	26.0	38.5	5.9
Carbon	1	3	6	17	85	511	90.0	11.1	2.0
Emery	2	6	6	14	113	312	55.0	18.2	1.0
Garfield	1	3	3	14	43	213	75.0	13.3	1.0
Grand	1	3	51	3	31	31	0.6	1636.4	18.0
Kane	0	0	—	—	—	—	—	—	—
San Juan	0	0	—	—	—	—	—	—	—
Washington	0	0	—	—	—	—	—	—	—
Wayne	0	0	—	—	—	—	—	—	—
Colorado Plateau totals	5	14	65	48	272	1067	16.3	61.2	4.6
Unknown	0	0	—	—	—	—	—	—	—
Statewide totals*	61	173	970	893	3245	20963	21.6	46.3	5.6

*Statewide totals for sample size and trappers afield are not totals of the columns because trappers trapped multiple counties.

BOBCAT

Statewide bobcat trapping harvest statistics, Utah 1982–2017.

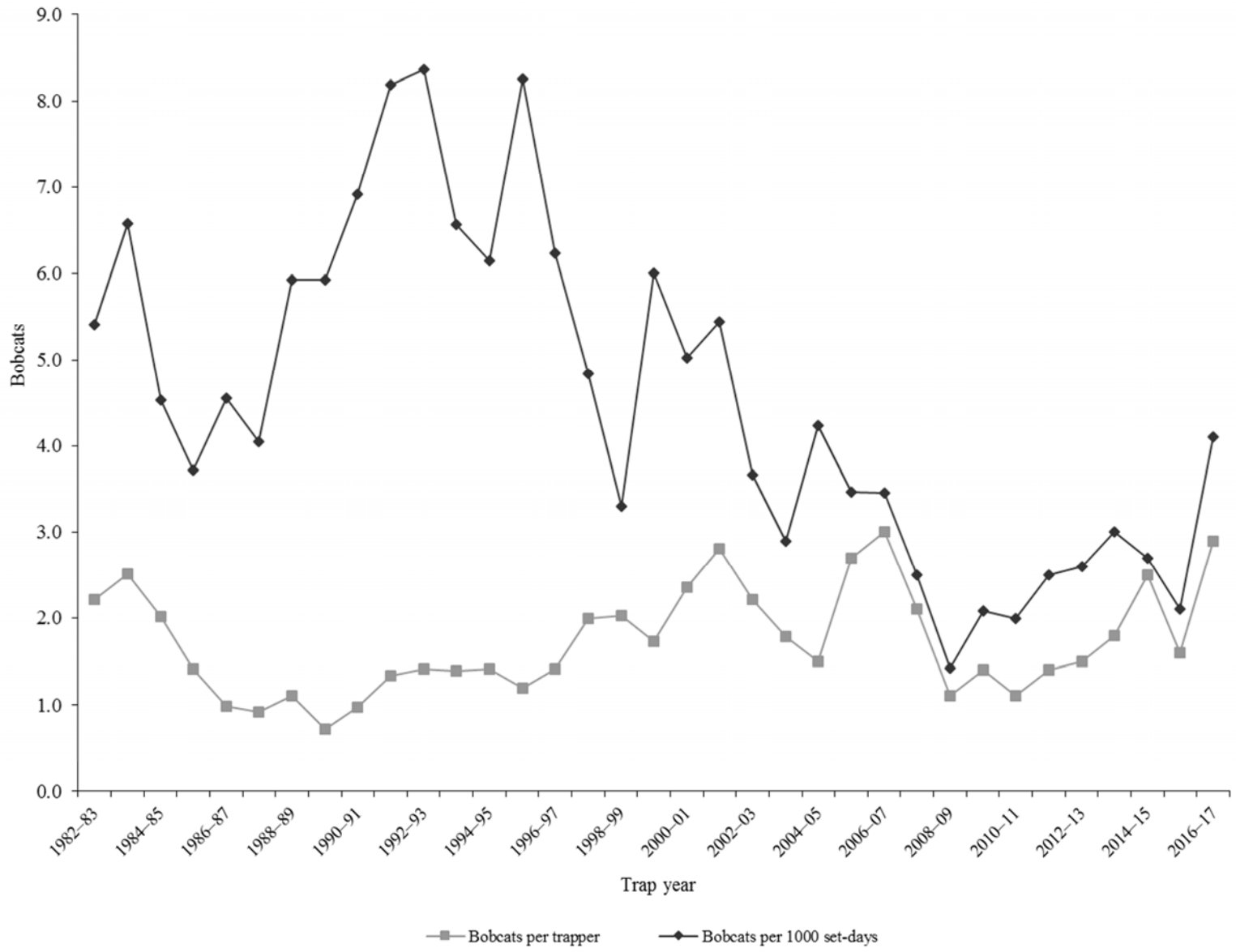
Trap year	Trappers afield	Trap harvest	Set-days	Set-days / bobcat	Bobcats / 1000 set-days	Bobcats / trapper	Pelt price (\$)
1982–83	1145	2540	469979	185	5.4	2.2	171.00
1983–84	1050	2640	401841	152	6.6	2.5	189.00
1984–85	1253	2532	559480	221	4.5	2.0	202.00
1985–86	1083	1530	411493	269	3.7	1.4	197.00
1986–87	1036	1024	224778	220	4.6	1.0	309.00
1987–88	1108	1023	252680	247	4.0	0.9	245.00
1988–89	941	1042	175990	169	5.9	1.1	221.00
1989–90	1167	843	142360	169	5.9	0.7	102.00
1990–91	542	527	76218	145	6.9	1.0	87.00
1991–92	726	968	118293	122	8.2	1.3	104.00
1992–93	827	1171	139949	120	8.4	1.4	90.00
1993–94	900	1256	191367	152	6.6	1.4	118.60
1994–95	914	1293	210522	163	6.1	1.4	70.02
1995–96	749	896	108594	121	8.3	1.2	79.51
1996–97	615	866	138899	160	6.2	1.4	147.80
1997–98	619	1234	255147	207	4.8	2.0	60.89
1998–99	1031	2092	633774	303	3.3	2.0	55.86
1999–00	828	1430	238152	167	6.0	1.7	82.64
2000–01	852	2008	399609	199	5.0	2.4	93.56
2001–02	666	1866	342678	184	5.4	2.8	147.66
2002–03	984	2176	593692	273	3.7	2.2	270.33
2003–04	1133	2027	701383	346	2.9	1.8	203.17
2004–05	1300	1954	462019	236	4.2	1.5	221.65
2005–06	979	2625	757380	289	3.5	2.7	358.56
2006–07	1017	3037	877870	289	3.5	3.0	197.53
2007–08	985	2091	836519	400	2.5	2.1	388.43
2008–09	1630	1796	1258813	701	1.4	1.1	238.69
2009–10	717	1017	488709	481	2.1	1.4	223.71
2010–11	771	846	416474	492	2.0	1.1	368.95
2011–12	755	1094	437912	400	2.5	1.4	456.16
2012–13	836	1214	475902	392	2.6	1.5	560.96
2013–14	953	1690	562430	333	3.0	1.8	407.44
2014–15	1105	2776	1036043	373	2.7	2.5	223.11
2015–16	982	1543	739720	479	2.1	1.6	151.63
2016–17	571	1657	402966	243	4.1	2.9	273.23
Average	936	1609	443990	269	4.5	1.7	209.06

Prior to the 2005–06 season, harvest by hunting and trapping were not collected separately and trapping harvest estimates included harvest by both hunters and trappers. Trap harvest includes incidental harvest.

Statewide bobcat hunting harvest statistics, Utah 2005–2017.

Trap year	Hunters afield	Hunt harvest	Hunter-days afield	Hunter-days / bobcat	Bobcats / hunter
2005–06	612	301	8194	27	0.5
2006–07	440	340	10408	31	0.8
2007–08	557	346	10089	29	0.6
2008–09	438	266	7360	28	0.6
2009–10	370	150	5253	35	0.4
2010–11	355	156	5888	38	0.4
2011–12	329	151	4146	28	0.5
2012–13	206	151	2739	18	0.7
2013–14	182	180	2901	16	1.0
2014–15	305	143	4203	29	0.5
2015–16	298	140	3819	27	0.5
2016–17	267	199	3446	17	0.7
Average	363	210	5704	27	0.6

Statewide bobcat trapping harvest trends, Utah 1982–2017.



Bobcat trapping harvest statistics by county and ecoregion, Utah 2016–17.

County	n	Trappers afield	Trap harvest**	Traps set	Trapping days	Set-days	Set-days / bobcat	Bobcats / 1000 set-days	Bobcats / trapper
Beaver	11	45	55	1800	399	19952	362.8	2.8	1.2
Box Elder	10	41	95	1405	436	12797	134.7	7.4	2.3
Iron	5	21	45	719	205	7870	174.9	5.7	2.1
Juab	4	16	96	814	218	9489	98.8	10.1	6.0
Millard	6	25	67	1562	279	20252	302.3	3.3	2.7
Tooele	9	37	31	2043	505	22011	710.0	1.4	0.8
Great Basin totals	45	185	389	8343	2042	92372	237.5	4.2	2.1
Cache	3	12	3	567	74	4882	1627.3	0.6	0.3
Davis	2	8	0	218	160	7841	—	0.0	0.0
Morgan	2	8	6	740	173	15534	2589.0	0.4	0.8
Piute	4	16	28	230	164	2310	82.5	12.1	1.8
Rich	1	4	11	247	164	9863	896.6	1.1	2.8
Salt Lake	0	0	7	—	—	—	—	—	—
Sanpete	5	21	7	1147	222	18148	2592.6	0.4	0.3
Sevier	10	41	84	1751	740	35153	418.5	2.4	2.0
Summit	0	0	10	—	—	—	—	—	—
Utah	7	29	37	1278	542	36953	998.7	1.0	1.3
Wasatch	4	16	7	296	123	2540	362.9	2.8	0.4
Weber	5	21	12	353	399	8885	740.4	1.4	0.6
Rocky Mountain totals	43	177	212	6826	2762	142110	670.3	1.5	1.2
Daggett	3	12	15	411	111	4192	279.5	3.6	1.3
Duchesne	12	49	72	2133	740	28623	397.5	2.5	1.5
Uintah	15	62	168	2174	678	32975	196.3	5.1	2.7
Uintah Basin totals	30	123	255	4718	1529	65790	258.0	3.9	2.1
Carbon	3	12	66	370	144	4315	65.4	15.3	5.5
Emery	3	12	21	156	86	1410	67.1	14.9	1.8
Garfield	8	33	136	1389	452	19426	142.8	7.0	4.1
Grand	3	12	71	234	218	4011	56.5	17.7	5.9
Kane	7	29	182	892	374	11811	64.9	15.4	6.3
San Juan	9	37	240	2338	814	56096	233.7	4.3	6.5
Washington	6	25	63	497	140	4689	74.4	13.4	2.5
Wayne	2	8	22	111	58	937	42.6	23.5	2.8
Colorado Plateau totals	41	168	801	5988	2285	102695	128.2	7.8	4.8
Unknown	0	0	—	—	—	—	—	—	—
Statewide totals*	139	571	1657	25875	8618	402966	243.2	4.1	2.9

*Statewide totals for sample size and trappers afield are not totals of the columns because trappers trapped multiple counties.

**Total harvest numbers are from pelt check-in, while numbers of trappers afield and effort are determined from harvest survey.

Bobcat hunting harvest statistics by county and ecoregion, Utah 2016–17.

County	n	Hunters afield	Hunt harvest**	Hunter-days afield	Hunter-days / bobcat	Bobcats / hunter
Beaver	1	4	2	4	2.0	0.5
Box Elder	9	37	14	205	14.6	0.4
Iron	2	8	3	25	8.3	0.4
Juab	6	25	4	95	23.8	0.2
Millard	2	8	9	62	6.9	1.1
Tooele	6	25	10	251	25.1	0.4
Great Basin totals	26	107	42	642	15.3	0.4
Cache	3	12	9	86	9.6	0.8
Davis	2	8	0	62	—	0.0
Morgan	7	29	7	329	47.0	0.2
Piute	1	4	0	12	—	0.0
Rich	3	12	13	156	12.0	1.1
Salt Lake	0	0	—	—	—	—
Sanpete	3	12	19	181	9.5	1.6
Sevier	3	12	6	201	33.5	0.5
Summit	5	21	5	181	36.2	0.2
Utah	9	37	24	329	13.7	0.6
Wasatch	0	0	17	—	—	—
Weber	4	16	2	99	49.5	0.1
Rocky Mountain totals	40	164	102	1636	16.0	0.6
Daggett	2	8	1	136	136.0	0.1
Duchesne	2	8	6	41	6.8	0.8
Uintah	4	16	15	74	4.9	0.9
Uintah Basin totals	8	33	22	251	11.4	0.7
Carbon	4	16	7	74	10.6	0.4
Emery	3	12	3	62	20.7	0.3
Garfield	3	12	7	177	25.3	0.6
Grand	2	8	3	16	5.3	0.4
Kane	1	4	5	432	86.4	1.3
San Juan	1	4	6	0	0.0	1.5
Washington	3	12	2	21	10.5	0.2
Wayne	2	8	0	49	—	0.0
Colorado Plateau totals	19	78	33	831	25.2	0.4
Unknown	4	16	0	86	—	0.0
Statewide totals*	65	267	199	3446	17.3	0.7

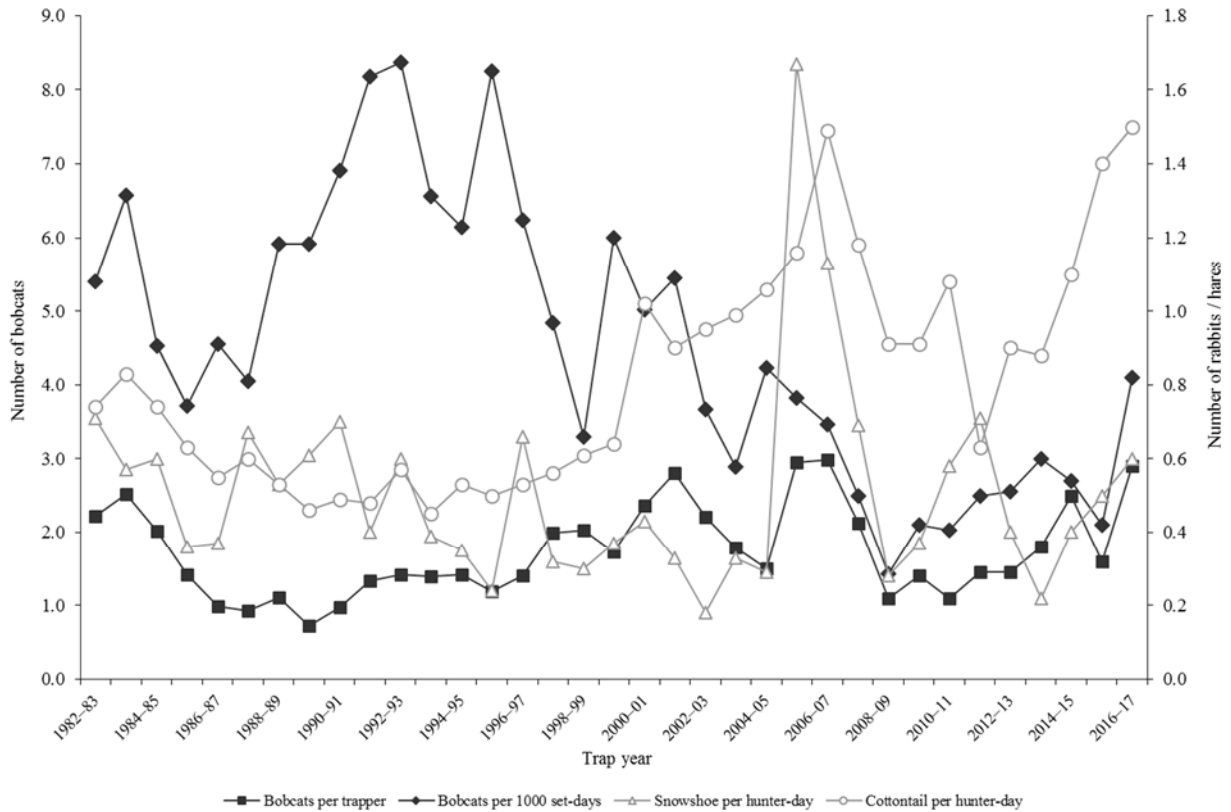
*Statewide totals for sample size and hunters afield are not totals of the columns because hunters hunted multiple counties.

**Total harvest numbers are from pelt check-in, while numbers of hunters afield and effort are determined from harvest survey.

Prey index

Lagomorph densities are generally considered to be a good indicator of bobcat recruitment and survival because high lagomorph populations provide an essential prey base for dispersing bobcats. When lagomorph populations are high or increasing, the bobcat population has also increased or at least remained stable. Thus, low populations of lagomorphs will reduce the likelihood of younger bobcats surviving to the next year. Cottontail rabbit and snowshoe hare data are taken from the Utah Upland Game Annual Report 2016–17 (2016–17 seasons).

Relationships in harvest statistics between bobcat and prey, Utah 1982–2017.



Population trends

Bobcat harvest age and sex ratios, Utah 1985–2017.

Trap year	Kittens / adult female	Kittens / adult	Male kittens / female kittens	Juveniles / adult	Juv. males / juv. females	Proportion juveniles in harvest	Proportion females in harvest	Males / females
1985–86	0.5	0.2	1.0	—	—	—	—	1.2
1986–87	0.7	0.3	0.9	—	—	—	—	1.1
1987–88	1.2	0.5	1.0	—	—	—	—	1.1
1988–89	1.1	0.4	1.1	—	—	—	—	1.3
1989–90	0.8	0.3	1.0	—	—	—	—	1.4
1990–91	0.8	0.3	0.6	—	—	—	—	1.2
1991–92	0.9	0.7	1.3	—	—	—	—	1.5
1992–93	0.9	1.0	1.2	—	—	—	—	1.4
1993–94	1.6	0.6	1.0	—	—	—	—	1.3
1994–95	0.6	0.6	1.1	0.6	1.1	0.36	0.44	1.3
1995–96	1.4	0.5	0.7	0.5	1.0	0.35	0.44	1.3
1996–97	1.9	0.7	1.1	0.7	1.1	0.41	0.41	1.4
1997–98	1.2	0.4	0.9	0.4	0.9	0.30	0.42	1.4
1998–99	2.1	0.8	1.1	—	—	—	—	1.3
1999–00	0.8	0.3	1.0	1.0	1.4	0.50	0.39	1.6
2000–01	0.7	0.3	1.1	0.9	1.3	0.47	0.39	1.6
2001–02	0.4	0.2	1.0	0.6	1.2	0.38	0.41	1.4
2002–03	0.4	0.2	0.9	0.4	1.0	0.28	0.45	1.2
2003–04	0.6	0.3	0.9	0.5	1.0	0.31	0.47	1.1
2004–05	0.8	0.3	0.8	1.2	1.1	0.55	0.44	1.3
2005–06	5.8	2.5	1.4	2.5	1.4	0.72	0.43	1.4
2006–07	4.1	1.5	1.4	1.5	1.4	0.60	0.43	1.3
2007–08	3.0	1.3	1.1	1.4	1.1	0.56	0.43	1.3
2008–09	0.4	0.2	0.8	0.7	1.0	0.42	0.45	1.2
2009–10	0.7	0.3	1.0	0.6	1.2	0.38	0.47	1.1
2010–11	0.6	0.2	1.1	0.5	1.2	0.31	0.43	1.4
2011–12	0.8	0.3	1.1	0.5	1.2	0.35	0.45	1.2
2012–13	0.6	0.3	0.9	0.5	0.9	0.35	0.48	1.1
2013–14	0.9	0.4	0.9	0.8	0.9	0.46	0.45	1.2
2014–15	1.6	0.8	1.0	1.5	1.2	0.60	0.45	1.2
2015–16	1.4	0.6	0.9	1.6	1.4	0.62	0.44	1.3
2016–17	1.4	0.6	0.9	1.8	1.3	0.64	0.41	1.5
Average	1.3	0.6	1.0	0.9	1.1	0.45	0.44	1.3

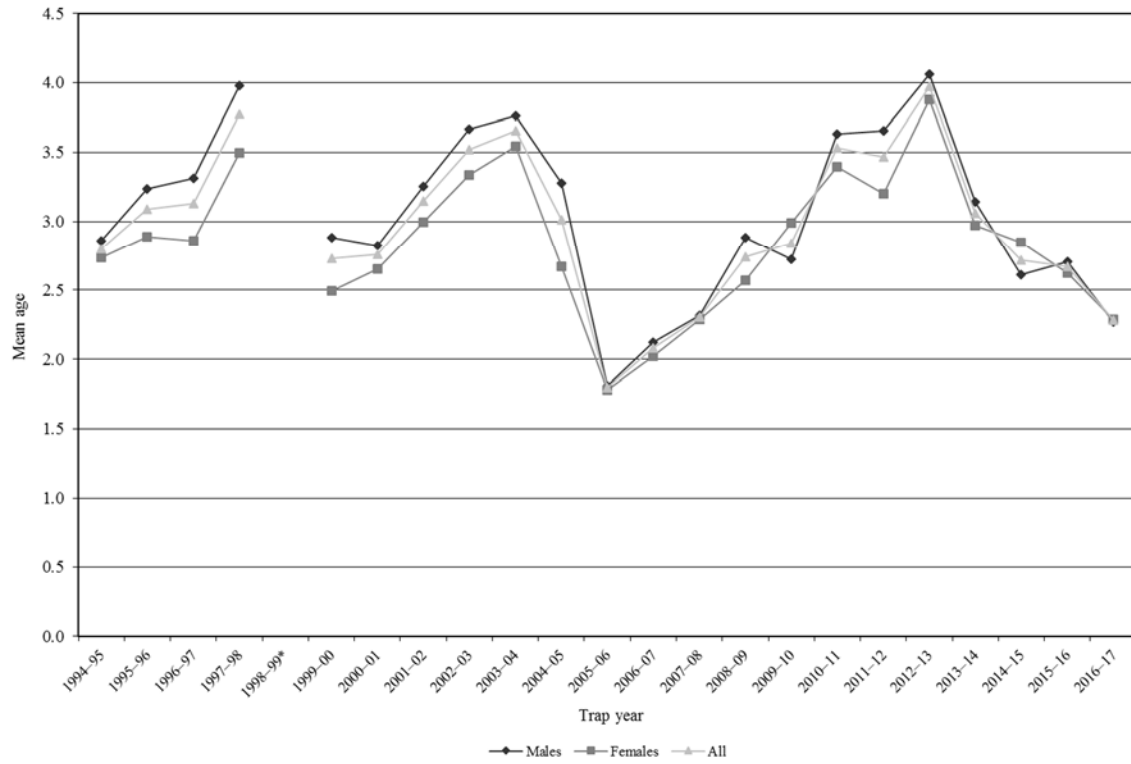
In annual reports prior to 2005–06, the "juvenile" age category referred only to kittens (age 0.5) while "adults" included all bobcats age 1.5 and older. Beginning with the 2005–06 annual report, the term "juvenile" now refers to kittens and yearlings (ages 0.5–1.5), while "adult" includes all bobcats age 2.5 and older.

Adult bobcat survival (from Chapman-Robson estimator), Utah 1985–2017.

Trap year	Survival (%)	95% confidence interval	Chi-square value, degrees of freedom
1985–86	63	60–65	13.2, 9df
1986–87	63	60–65	34.1, 9df
1987–88	65	61–68	19.9, 9df
1988–89	64	60–68	17.3, 8df
1989–90	67	63–71	19.4, 8df
1990–91	58	53–62	28.5, 12df
1991–92	58	55–60	47.9, 14df
1992–93	59	56–63	19.9, 12df
1993–94	54	52–57	34.2, 11df
1994–95	57	54–59	17.2, 14df
1995–96	64	61–66	40.0, 11df
1996–97	68	65–70	23.4, 12df
1997–98	71	69–74	19.1, 14df
1998–99	71	70–73	35.2, 13df
1999–00	66	64–68	41.0, 15df
2000–01	64	62–66	86.0, 11df
2001–02	65	63–67	87.3, 14df
2002–03	67	65–68	175.5, 13df
2003–04	71	70–72	245.6, 12df
2004–05	74	73–76	83.9, 15df
2005–06	68	65–70	15.7, 12df
2006–07	53	48–58	41.9, 9df
2007–08	58	54–62	63.6, 12df
2008–09	57	54–61	64.5, 14df
2009–10	59	56–62	60.1, 12df
2010–11	69	66–71	90.0, 13df
2011–12	70	66–73	22.7, 13df
2012–13	75	72–78	87.2, 11df
2013–14	70	66–74	52.8, 12df
2014–15	74	71–77	62.2, 13df
2015–16	73	70–76	66.6, 13df
2016–17	65	61–68	93.1, 10df
Average	65	—	—

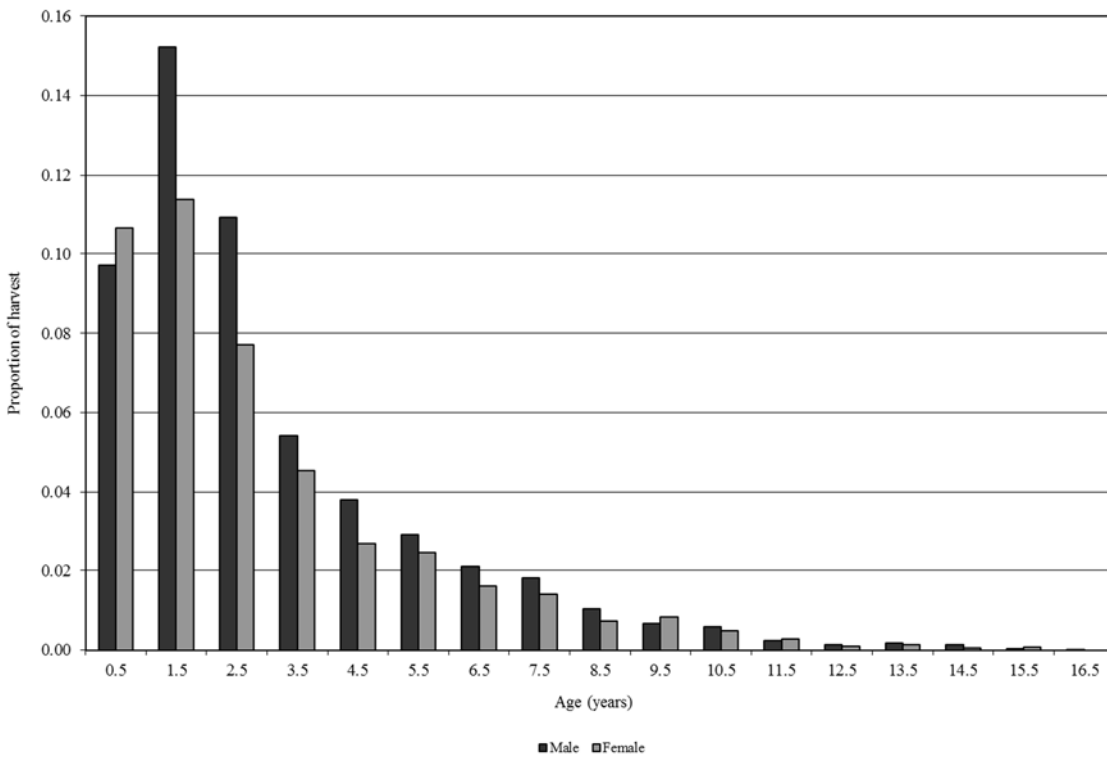
Age structure

Average age of harvested bobcats, Utah 1999–2017.

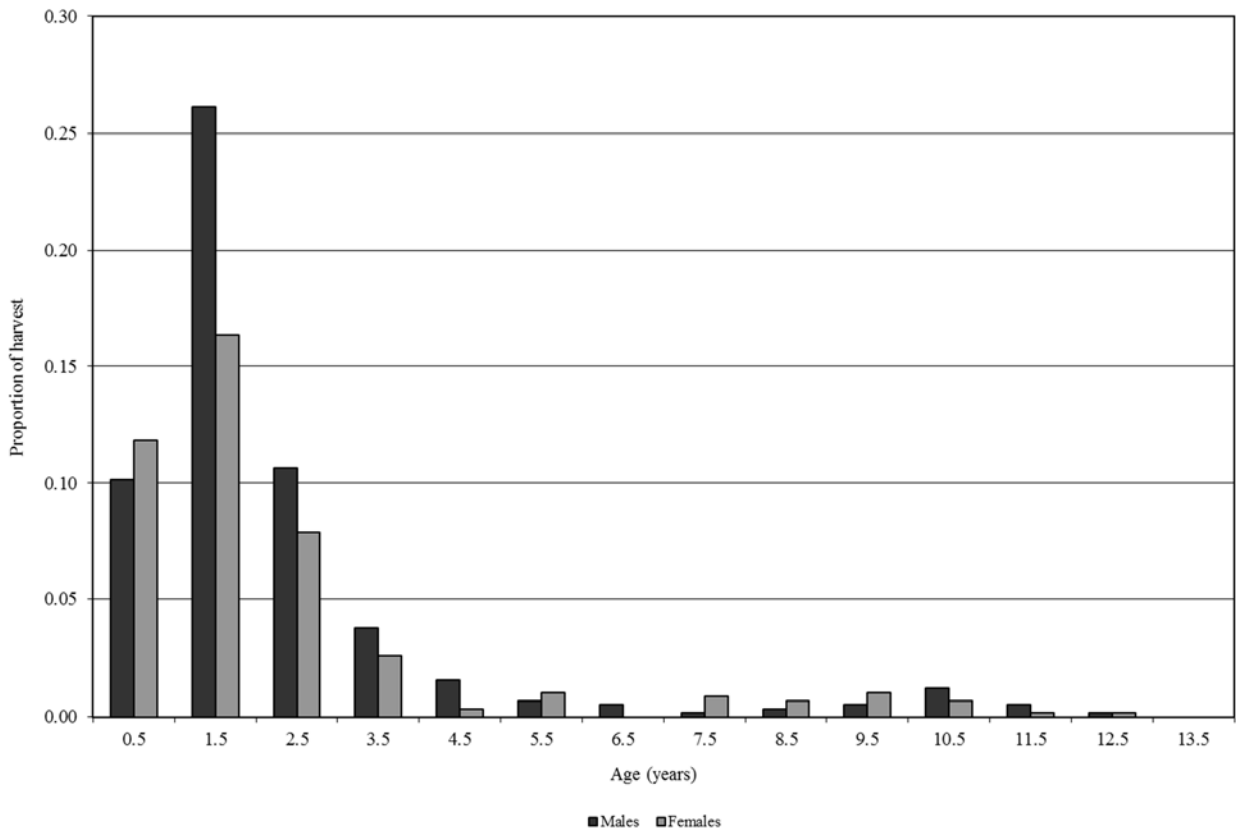


*Excludes age structure data from the 1998–99 trap season.

Average proportion of bobcats harvested by age category, Utah 2006–2017.



Age structure of harvested bobcats, Utah 2016–17.



COYOTE

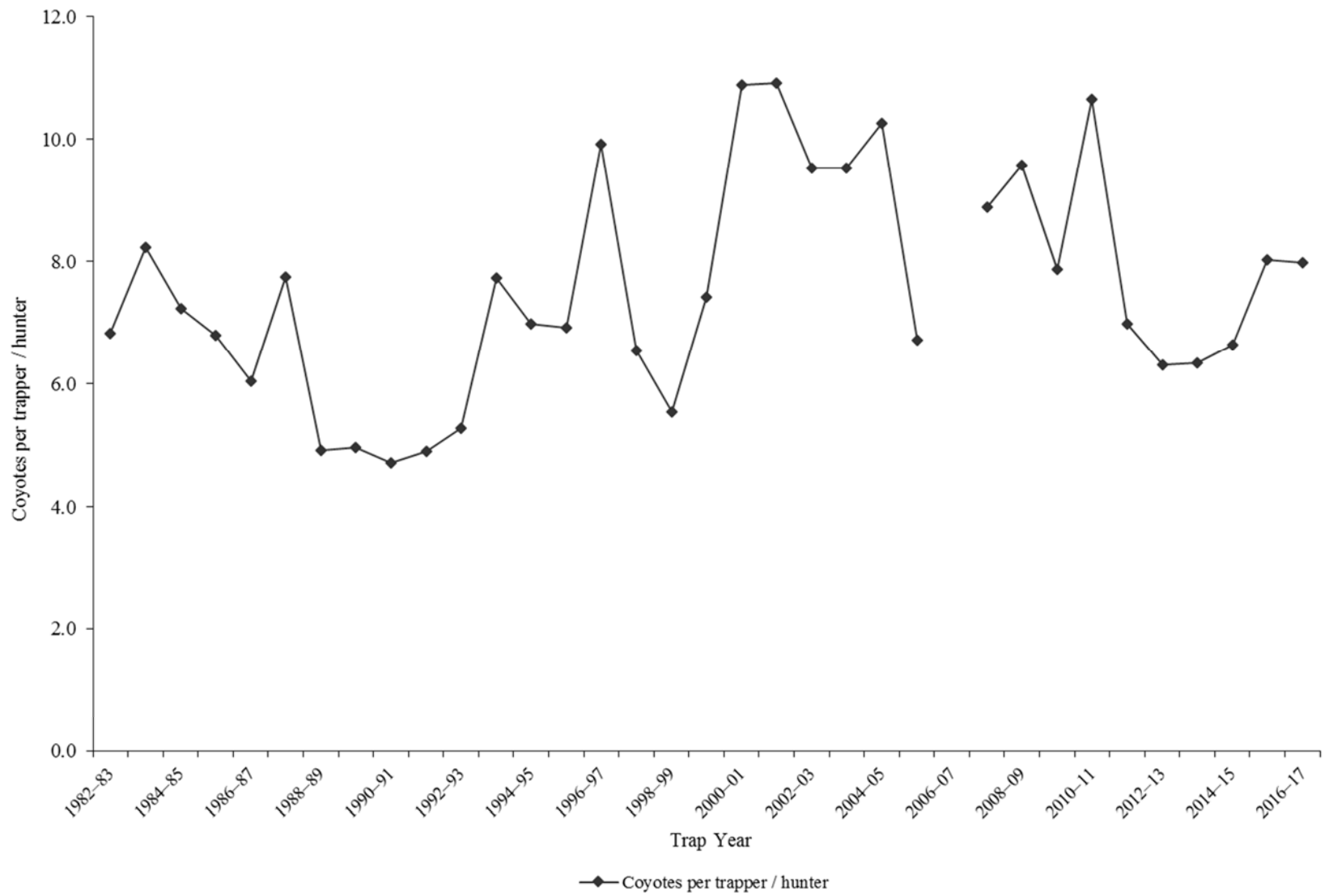
Statewide coyote harvest statistics, Utah 1982–2016.

Trap year	Trappers / hunters afield	Wildlife Services harvest	Incidental harvest	Trap harvest	Hunt harvest	Coyotes per trapper / hunter*	Pelt price (\$)
1982–83	841	4130	—	5738	—	6.8	35.42
1983–84	715	5063	—	5878	—	8.2	25.92
1984–85	828	5427	—	5991	—	7.2	32.35
1985–86	714	5045	—	4851	—	6.8	19.65
1986–87	819	4116	—	4947	—	6.0	33.64
1987–88	893	4338	—	6919	—	7.7	15.55
1988–89	652	4853	—	3200	—	4.9	8.47
1989–90	671	5168	—	3331	—	5.0	8.68
1990–91	389	4444	—	1831	—	4.7	11.41
1991–92	664	4347	—	3255	—	4.9	20.00
1992–93	695	4932	—	3666	—	5.3	15.75
1993–94	679	5827	—	5247	—	7.7	24.58
1994–95	754	3893	—	5267	—	7.0	12.51
1995–96	632	4165	—	4372	—	6.9	15.49
1996–97	405	4484	—	4017	—	9.9	18.73
1997–98	494	4169	—	3228	—	6.5	10.80
1998–99	782	3464	—	4337	—	5.5	10.80
1999–00	473	4534	—	3510	—	7.4	19.14
2000–01	456	4275	—	4966	—	10.9	14.39
2001–02	399	3874	—	4354	—	10.9	16.17
2002–03	572	3394	—	5446	—	9.5	32.62
2003–04	699	3897	—	6660	—	9.5	25.74
2004–05	699	4125	—	7173	—	10.3	20.10
2005–06	630	4820	328	1190	3039	6.7	30.45
2006–07	830	5041	—	—	—	—	26.37
2007–08	859	5618	821	4055	3582	8.9	21.74
2008–09	726	3909	1020	3963	2982	9.6	10.86
2009–10	781	3808	531	3188	2955	7.9	14.80
2010–11	736	4081	292	4356	3480	10.6	25.00
2011–12	705	3444	374	3054	1868	7.0	43.43
2012–13	881	3349	192	3269	2288	6.3	39.56
2013–14	864	2605	312	3162	2310	6.3	37.39
2014–15	971	3099	424	4118	2331	6.6	45.88
2015–16	977	3961	166	4801	3034	8.0	29.63
2016–17	607	3473	285	2244	2595	8.0	37.26
Average	700	4262	431	4282	2769	7.5	23.15

Prior to the 2005–06 season, harvest by hunting and trapping were not collected separately and trap harvest estimates included all harvest by both hunting and trapping.

*Coyotes per trapper / hunter does not include Wildlife Services harvest.

Statewide coyote harvest trends, Utah 1982–2017.



Coyote trapping harvest statistics by county and ecoregion, Utah 2016–17.

County	n	Trappers afield	Trap harvest	Traps set	Trapping days	Set-days	Set-days / coyote	Coyotes / 1000 set-days	Coyotes / trapper
Beaver	9	24	107	212	1007	7861	73.3	13.6	4.6
Box Elder	9	24	71	251	455	7508	106.3	9.4	3.0
Iron	6	16	89	167	659	8460	95.1	10.5	5.7
Juab	3	8	5	47	262	1570	300.0	3.3	0.7
Millard	3	8	55	131	534	15722	286.2	3.5	7.0
Tooele	10	26	102	437	1059	24399	239.2	4.2	3.9
Great Basin totals	40	105	429	1245	3976	65519	152.7	6.5	4.1
Cache	5	13	21	136	698	7074	338.0	3.0	1.6
Davis	2	5	55	94	628	7534	137.1	7.3	10.5
Morgan	2	5	37	76	222	4159	113.6	8.8	7.0
Piute	4	10	136	126	246	2498	18.4	54.5	13.0
Rich	4	10	272	432	746	32765	120.4	8.3	26.0
Salt Lake	4	10	10	47	523	2119	202.5	4.9	1.0
Sanpete	4	10	24	183	704	14519	616.7	1.6	2.3
Sevier	9	24	152	335	761	10984	72.4	13.8	6.4
Summit	2	5	5	34	63	471	90.0	11.1	1.0
Utah	8	21	110	437	1360	32464	295.5	3.4	5.3
Wasatch	2	5	0	34	68	570	—	0.0	0.0
Weber	4	10	21	173	309	4667	223.0	4.5	2.0
Rocky Mountain totals	50	131	843	2106	6328	119824	142.3	7.0	6.4
Daggett	0	0	—	—	—	—	—	—	—
Duchesne	8	21	165	358	2477	38763	235.2	4.3	7.9
Uintah	12	31	233	599	1572	31284	134.4	7.4	7.4
Uintah Basin totals	20	52	398	957	4049	70047	176.2	5.7	7.6
Carbon	2	5	0	78	157	2354	—	0.0	0.0
Emery	1	3	5	5	39	78	15.0	66.7	2.0
Garfield	4	10	76	123	364	3048	40.2	24.9	7.3
Grand	2	5	8	65	58	604	77.0	13.0	1.5
Kane	4	10	84	160	358	4944	59.1	16.9	8.0
San Juan	7	18	194	816	1316	71075	367.2	2.7	10.6
Washington	4	10	73	105	306	4157	56.8	17.6	7.0
Wayne	4	10	136	235	560	8580	63.1	15.9	13.0
Colorado Plateau totals	28	73	576	1588	3157	94841	164.8	6.1	7.9
Unknown	0	0	—	—	—	—	—	—	—
Statewide totals*	123	322	2244	5896	17511	350231	156.0	6.4	7.0

*Statewide totals for sample size and trappers afield are not totals of the columns because trappers trapped multiple counties.

Coyote hunting harvest statistics by county and ecoregion, Utah 2016–17.

County	n	Hunters afield	Hunt harvest	Hunter-days afield	Hunter-days / coyote	Coyotes / hunter
Beaver	3	8	238	447	1.9	30.3
Box Elder	23	60	296	377	1.3	4.9
Iron	7	18	86	165	1.9	4.7
Juab	14	37	31	291	9.3	0.9
Millard	10	26	188	592	3.1	7.2
Tooele	16	42	215	364	1.7	5.1
Great Basin totals	73	191	1054	2235	2.1	5.5
Cache	10	26	73	167	2.3	2.8
Davis	2	5	18	24	1.3	3.5
Morgan	7	18	60	411	6.8	3.3
Piute	4	10	31	604	19.3	3.0
Rich	7	18	81	131	1.6	4.4
Salt Lake	0	0	—	—	—	—
Sanpete	7	18	29	408	14.2	1.6
Sevier	11	29	68	800	11.8	2.4
Summit	7	18	58	102	1.8	3.1
Utah	12	31	39	345	8.8	1.3
Wasatch	3	8	10	89	8.5	1.3
Weber	4	10	21	55	2.6	2.0
Rocky Mountain totals	74	194	489	3137	6.4	2.5
Daggett	6	16	44	458	10.3	2.8
Duchesne	6	16	52	99	1.9	3.3
Uintah	14	37	149	568	3.8	4.1
Uintah Basin totals	26	68	246	1125	4.6	3.6
Carbon	7	18	110	162	1.5	6.0
Emery	8	21	68	245	3.6	3.3
Garfield	6	16	92	433	4.7	5.8
Grand	2	5	3	5	2.0	0.5
Kane	3	8	31	60	1.9	4.0
San Juan	9	24	259	301	1.2	11.0
Washington	10	26	152	322	2.1	5.8
Wayne	4	10	47	99	2.1	4.5
Colorado Plateau totals	49	128	761	1628	2.1	5.9
Unknown	6	16	44	139	3.1	2.8
Statewide totals*	142	371	2595	8263	3.2	7.0

*Statewide totals for sample size and hunters afield are not totals of the columns because hunters hunted multiple counties.

GRAY FOX

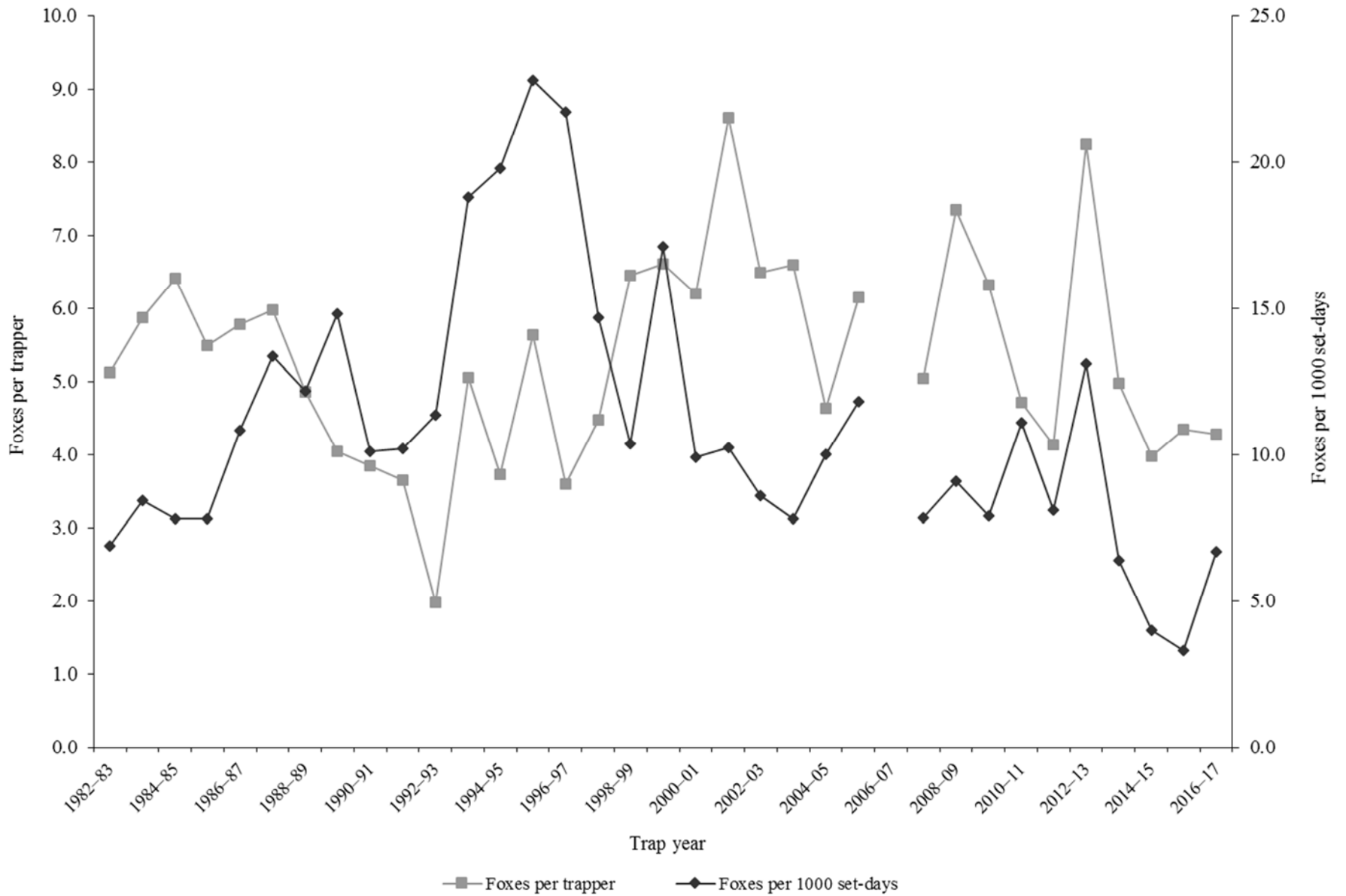
Statewide gray fox harvest statistics*, Utah 1982–2017.

Trap year	Trappers afield	Incidental harvest	Trap harvest	Hunt harvest	Set-days / fox	Foxes / 1000 set-days	Foxes / trapper	Pelt price (\$)
1982–83	263	—	1346	—	145	6.9	5.1	27.75
1983–84	233	—	1367	—	119	8.4	5.9	25.13
1984–85	305	—	1954	—	128	7.8	6.4	24.64
1985–86	256	—	1407	—	128	7.8	5.5	15.03
1986–87	252	—	1457	—	92	10.8	5.8	25.29
1987–88	273	—	1633	—	75	13.4	6.0	21.91
1988–89	226	—	1099	—	82	12.2	4.9	13.50
1989–90	233	—	941	—	68	14.8	4.0	6.19
1990–91	65	—	250	—	99	10.1	3.8	8.24
1991–92	110	—	402	—	98	10.2	3.7	6.87
1992–93	214	—	422	—	88	11.4	2.0	7.08
1993–94	136	—	687	—	53	18.8	5.1	12.00
1994–95	207	—	771	—	51	19.8	3.7	9.62
1995–96	147	—	828	—	44	22.8	5.6	10.65
1996–97	102	—	367	—	46	21.7	3.6	11.60
1997–98	87	—	389	—	68	14.7	4.5	7.76
1998–99	135	—	870	—	96	10.4	6.4	6.96
1999–00	140	—	925	—	58	17.1	6.6	6.62
2000–01	187	—	1159	—	101	9.9	6.2	8.00
2001–02	154	—	1326	—	98	10.2	8.6	11.58
2002–03	299	—	1942	—	116	8.6	6.5	12.47
2003–04	265	—	1749	—	128	7.8	6.6	10.84
2004–05	203	—	942	—	100	10.0	4.6	13.81
2005–06	98	—	603	—	85	11.8	6.2	24.15
2006–07	252	—	—	—	—	—	—	37.25
2007–08	217	—	1093	—	127	7.9	5.0	39.19
2008–09	238	—	1747	—	110	9.1	7.3	17.07
2009–10	163	361	1031	—	126	7.9	6.3	16.56
2010–11	138	292	651	—	90	11.1	4.7	20.97
2011–12	125	485	474	43	124	8.1	4.1	23.13
2012–13	130	216	1069	3	77	13.1	8.2	31.15
2013–14	172	462	843	13	155	6.4	5.0	24.18
2014–15	123	525	490	0	249	4.0	4.0	16.16
2015–16	151	450	623	33	299	3.3	4.3	10.75
2016–17	84	267	356	3	150	6.7	4.3	15.42
Average	182	382	977	16	108	11.0	5.3	16.56

Prior to the 2005–06 season, harvest by hunting and trapping were not collected separately and trapping harvest estimates included harvest by both hunters and trappers. Trap harvest includes incidental harvest.

*Trappers and foxes per trapper include hunters and their harvest. Set-days per fox and foxes per 1000 set-days are based only on trapping activity, and do not include hunt harvest or hunter-days afield.

Statewide gray fox harvest trends, Utah 1982–2017.



Gray fox trapping harvest statistics by county and ecoregion, Utah 2016–17.

County	n	Trappers afield	Trap harvest	Traps set	Trapping days	Set-days	Set-days / fox	Foxes / 1000 set-days	Foxes / trapper
Beaver	2	5	16	34	254	889	56.7	17.6	3.0
Box Elder	1	3	26	13	26	131	5.0	200.0	10.0
Iron	6	16	13	144	670	6822	521.6	1.9	0.8
Juab	0	0	—	—	—	—	—	—	—
Millard	0	0	—	—	—	—	—	—	—
Tooele	0	0	—	—	—	—	—	—	—
Great Basin totals	9	24	55	191	950	7843	142.8	7.0	2.3
Cache	0	0	—	—	—	—	—	—	—
Davis	1	3	8	16	60	361	46.0	21.7	3.0
Morgan	1	3	34	44	21	356	10.5	95.6	13.0
Piute	0	0	—	—	—	—	—	—	—
Rich	0	0	—	—	—	—	—	—	—
Salt Lake	1	3	44	44	47	800	18.0	55.6	17.0
Sanpete	0	0	—	—	—	—	—	—	—
Sevier	0	0	—	—	—	—	—	—	—
Summit	0	0	—	—	—	—	—	—	—
Utah	0	0	—	—	—	—	—	—	—
Wasatch	0	0	—	—	—	—	—	—	—
Weber	0	0	—	—	—	—	—	—	—
Rocky Mountain totals	3	8	86	105	128	1517	17.6	56.9	11.0
Daggett	0	0	—	—	—	—	—	—	—
Duchesne	0	0	—	—	—	—	—	—	—
Uintah	1	3	26	16	76	455	17.4	57.5	10.0
Uintah Basin totals	1	3	26	16	76	455	17.4	57.5	10.0
Carbon	1	3	0	63	78	1883	—	0.0	0.0
Emery	0	0	—	—	—	—	—	—	—
Garfield	3	8	5	71	387	3754	717.5	1.4	0.7
Grand	1	3	8	3	26	26	3.3	300.0	3.0
Kane	1	3	3	3	3	3	1.0	1000.0	1.0
San Juan	4	10	107	340	785	30999	289.0	3.5	10.3
Washington	9	24	65	170	536	5057	77.3	12.9	2.8
Wayne	1	3	0	16	314	1883	—	0.0	0.0
Colorado Plateau totals	20	52	188	664	2129	43605	231.5	4.3	3.6
Unknown	0	0	—	—	—	—	—	—	—
Statewide totals*	29	76	356	976	3283	53420	150.2	6.7	4.7

*Statewide totals for sample size and trappers afield are not totals of the columns because trappers trapped multiple counties.

KIT FOX

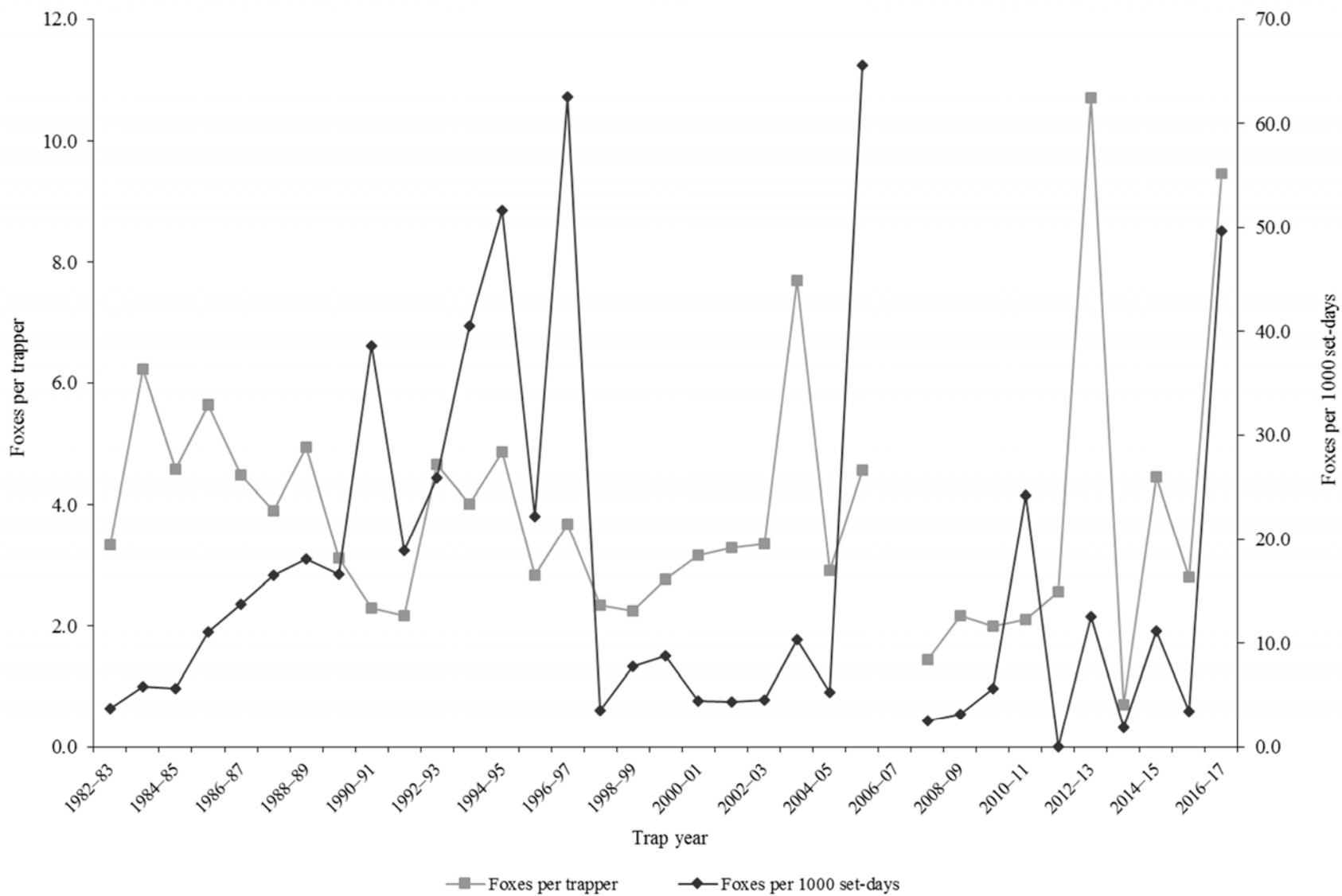
Statewide kit fox harvest statistics*, Utah 1982–2017.

Trap year	Trappers afield	Incidental harvest	Trap harvest	Hunt harvest	Set-days / fox	Foxes / 1000 set-days	Foxes / trapper	Pelt price (\$)
1982–83	109	—	363	—	267	3.7	3.3	11.39
1983–84	112	—	698	—	171	5.8	6.2	11.99
1984–85	142	—	651	—	178	5.6	4.6	11.17
1985–86	108	—	609	—	90	11.1	5.6	7.50
1986–87	122	—	547	—	73	13.7	4.5	9.90
1987–88	138	—	538	—	61	16.5	3.9	10.69
1988–89	130	—	643	—	55	18.1	4.9	6.98
1989–90	117	—	365	—	60	16.6	3.1	3.19
1990–91	81	—	186	—	26	38.6	2.3	4.67
1991–92	86	—	187	—	53	18.9	2.2	2.78
1992–93	41	—	191	—	39	25.9	4.7	4.30
1993–94	75	—	301	—	25	40.6	4.0	4.69
1994–95	109	—	531	—	19	51.6	4.9	6.45
1995–96	77	—	218	—	45	22.2	2.8	6.25
1996–97	44	—	162	—	16	62.5	3.7	6.77
1997–98	41	—	96	—	282	3.5	2.3	3.50
1998–99	75	—	168	—	128	7.8	2.2	7.31
1999–00	66	—	183	—	114	8.8	2.8	2.90
2000–01	51	—	161	—	227	4.4	3.2	6.13
2001–02	52	—	171	—	229	4.4	3.3	10.72
2002–03	90	—	302	—	221	4.5	3.4	5.44
2003–04	83	—	638	—	97	10.4	7.7	5.38
2004–05	89	—	259	—	191	5.2	2.9	8.98
2005–06	40	—	183	—	15	65.6	4.6	10.92
2006–07	65	—	—	—	—	—	—	10.50
2007–08	27	—	39	—	392	2.6	1.4	7.87
2008–09	48	—	104	—	314	3.2	2.2	7.61
2009–10	19	13	38	—	177	5.6	2.0	9.47
2010–11	20	3	42	—	41	24.2	2.1	12.68
2011–12	18	64	0	46	—	0.0	2.6	14.49
2012–13	31	41	315	17	80	12.6	10.7	14.37
2013–14	10	7	7	0	515	1.9	0.7	14.32
2014–15	22	47	95	3	90	11.2	4.5	7.13
2015–16	29	18	37	44	296	3.4	2.8	6.54
2016–17	13	31	123	0	20	49.7	9.5	10.32
Average	68	28	269	18	140	17.1	3.9	8.15

Prior to the 2005–06 season, harvest by hunting and trapping were not collected separately and trapping harvest estimates included harvest by both hunters and trappers. Trap harvest includes incidental harvest.

*Trappers and foxes per trapper include hunters and their harvest. Set-days per fox and foxes per 1000 set-days are based only on trapping activity, and do not include hunt harvest or hunter-days afield.

Statewide kit fox harvest trends, Utah 1982–2017.



MARTEN

Statewide marten harvest statistics, Utah 1982–1999.

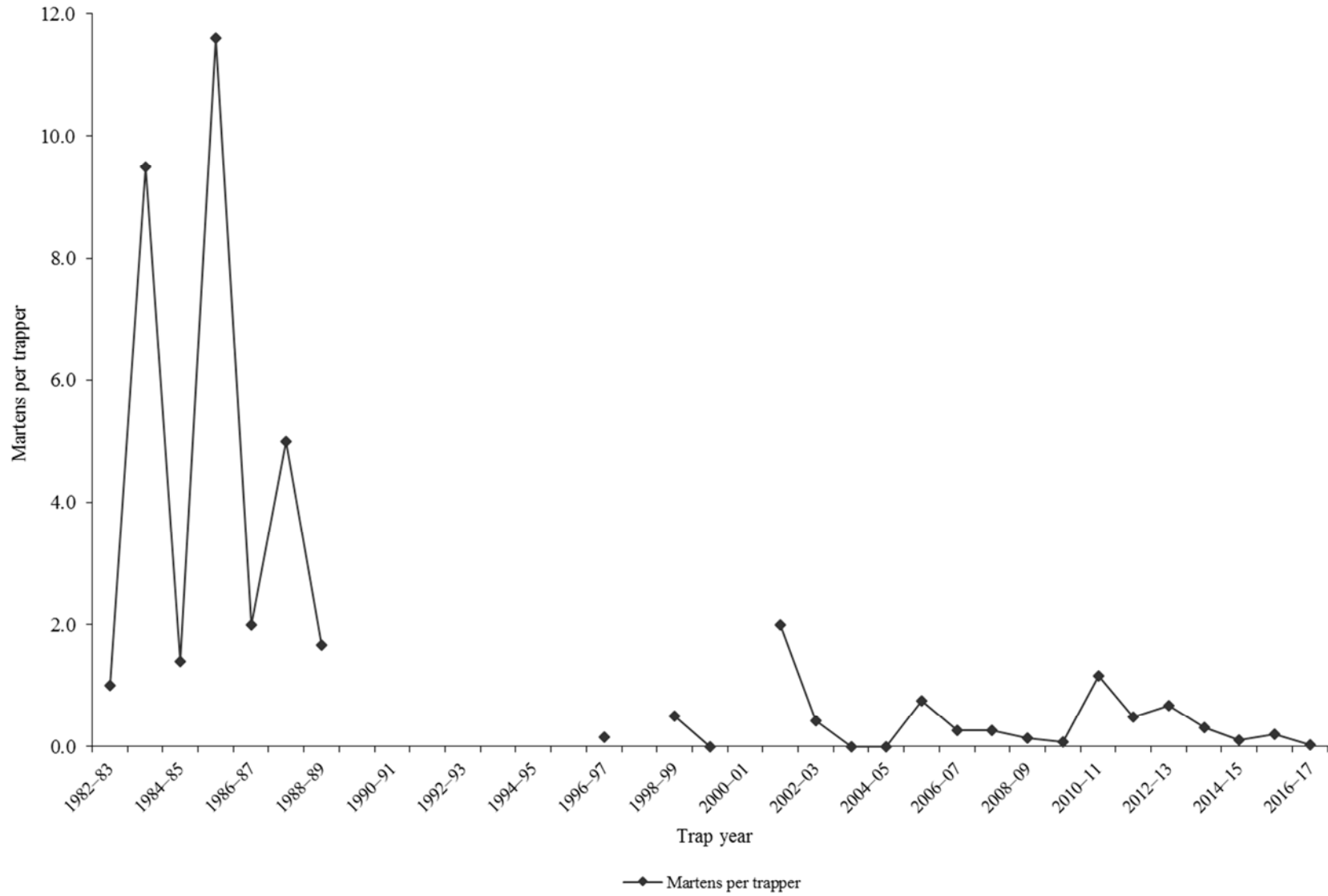
Trap year	Trappers afield	Trap / hunt harvest	Set-days	Set-days / marten	Martens / 1000 set-days	Martens / trapper	Pelt price (\$)
1982–83	1	1	6	6	166.7	1.0	10.00
1983–84	9	84	4704	56	17.9	9.5	20.00
1984–85	9	12	6516	543	1.8	1.4	24.00
1985–86	10	121	7381	61	16.4	11.6	23.00
1986–87	11	22	8558	389	2.6	2.0	25.68
1987–88	10	50	9750	195	5.1	5.0	40.00
1988–89	6	10	1210	121	8.3	1.7	31.00
1989–90	—	—	—	—	—	—	—
1990–91	—	—	—	—	—	—	—
1991–92	—	—	—	—	—	—	—
1992–93	—	—	—	—	—	—	—
1993–94	—	—	—	—	—	—	—
1994–95	—	—	—	—	—	—	—
1995–96	—	—	—	—	—	—	—
1996–97	13	2	—	—	—	0.2	20.00
1997–98	—	—	—	—	—	—	11.00
1998–99	12	6	1228	205	4.9	0.5	7.11
Average	9	34	4919	197	28.0	3.6	21.18

Statewide marten harvest statistics, Utah 1999–2017.

Trap year	Permits sold	Successful trappers	Male harvest	Female harvest	Unknown harvest	Total harvest	Success rate (%)*	Martens / trapper*
1999–00	5	0	0	0	0	0	0.0	0.0
2000–01	—	1	3	3	0	6	—	—
2001–02	11	2	16	6	0	22	18.2	2.0
2002–03	12	1	3	2	0	5	8.3	0.4
2003–04	18	0	0	0	0	0	0.0	0.0
2004–05	12	0	0	0	0	0	0.0	0.0
2005–06	16	2	7	4	1	12	12.5	0.8
2006–07	26	3	6	1	0	7	11.5	0.3
2007–08	22	4	7	14	0	21	18.2	1.0
2008–09	28	1	2	2	0	4	3.6	0.1
2009–10	25	1	2	0	0	2	4.0	0.1
2010–11	31	2	24	12	0	36	6.5	1.2
2011–12	29	3	7	3	4	14	10.3	0.5
2012–13	39	3	15	5	6	26	7.7	0.7
2013–14	51	6	13	3	0	16	11.8	0.3
2014–15	202	2	16	6	0	22	1.0	0.1
2015–16	46	1	5	4	0	9	2.2	0.2
2016–17	89	2	2	0	0	2	2.2	0.0
Average	39	2	8	3	1	11	6.9	0.4

*Assumption: Every person who possessed a marten permit trapped or hunted.

Statewide marten harvest trends, Utah 1982–2017.



MINK

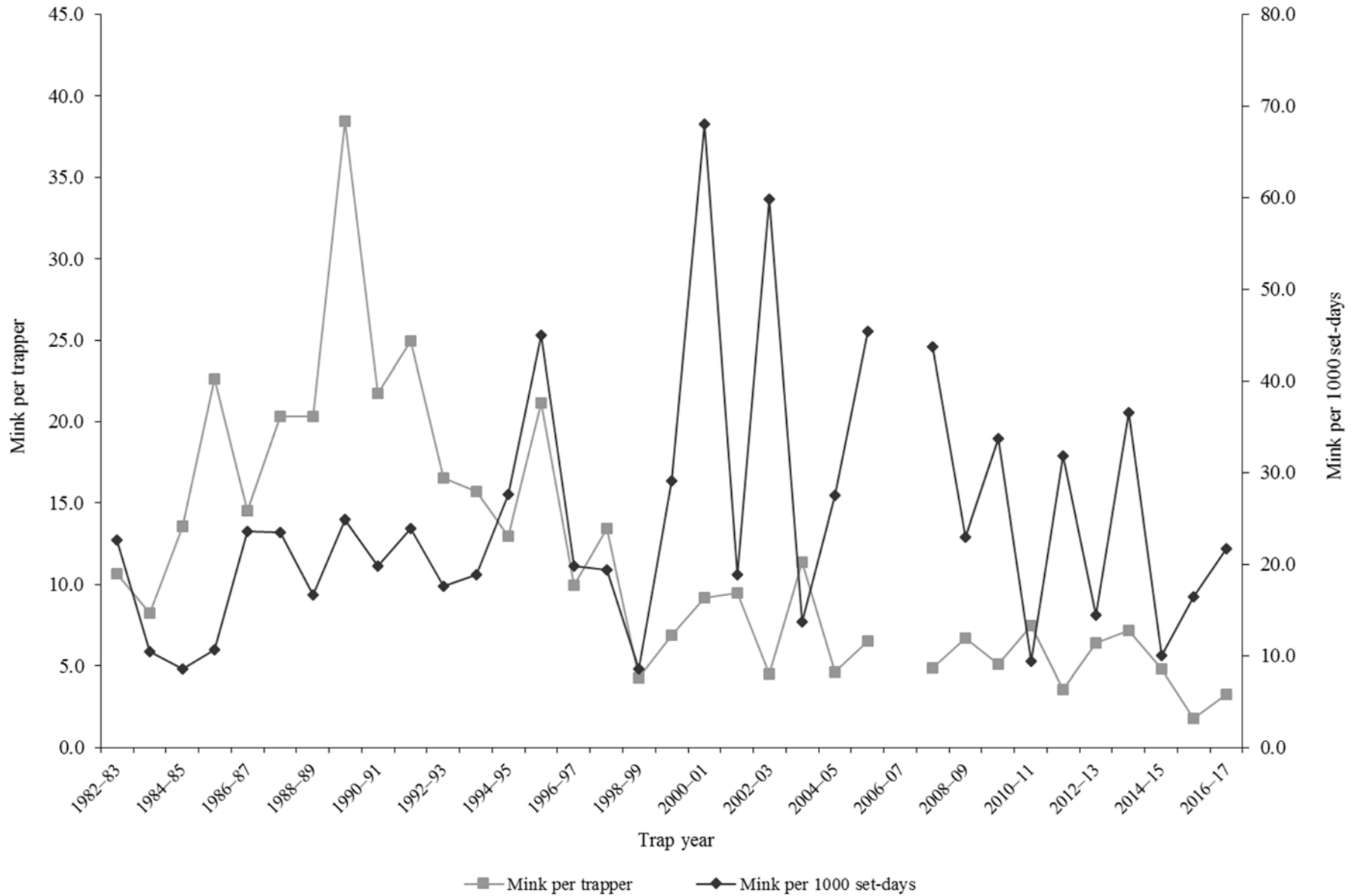
Statewide mink harvest statistics*, Utah 1982–2017.

Trap year	Trappers afield	Incidental harvest	Trap harvest	Hunt harvest	Set-days / mink	Minks / 1000 set-days	Minks / trapper	Pelt price (\$)
1982–83	38	—	405	—	44	22.7	10.7	10.85
1983–84	46	—	379	—	95	10.5	8.2	9.13
1984–85	40	—	542	—	117	8.6	13.6	10.27
1985–86	37	—	837	—	94	10.7	22.6	6.00
1986–87	57	—	828	—	42	23.6	14.5	10.63
1987–88	51	—	1037	—	42	23.6	20.3	12.25
1988–89	42	—	854	—	60	16.6	20.3	10.69
1989–90	29	—	1114	—	40	24.8	38.4	6.30
1990–91	25	—	543	—	50	19.8	21.7	6.33
1991–92	29	—	723	—	42	23.9	24.9	6.81
1992–93	23	—	380	—	57	17.6	16.5	7.50
1993–94	30	—	472	—	53	18.9	15.7	8.41
1994–95	27	—	350	—	36	27.6	13.0	8.38
1995–96	25	—	529	—	22	45.0	21.2	10.40
1996–97	27	—	269	—	50	19.8	10.0	10.95
1997–98	25	—	337	—	51	19.4	13.5	5.81
1998–99	81	—	345	—	116	8.6	4.3	7.11
1999–00	61	—	419	—	34	29.1	6.9	6.07
2000–01	51	—	468	—	15	68.1	9.2	4.92
2001–02	30	—	284	—	53	18.8	9.5	5.20
2002–03	59	—	268	—	17	59.8	4.5	2.07
2003–04	59	—	673	—	73	13.7	11.4	8.00
2004–05	68	—	317	—	36	27.5	4.7	8.98
2005–06	34	—	222	—	22	45.4	6.5	9.97
2006–07	65	—	—	—	—	—	—	7.94
2007–08	38	—	186	—	23	43.7	4.9	9.33
2008–09	36	—	242	—	44	22.9	6.7	5.96
2009–10	66	57	338	—	30	33.7	5.1	8.00
2010–11	65	151	485	—	107	9.4	7.5	11.27
2011–12	43	61	153	7	31	31.8	3.6	15.08
2012–13	110	147	706	14	70	14.4	6.4	19.18
2013–14	115	186	826	0	27	36.6	7.2	16.21
2014–15	54	82	259	0	100	10.0	4.8	8.57
2015–16	74	55	133	0	61	16.4	1.8	4.22
2016–17	60	29	196	21	46	21.7	3.3	7.52
Average	49	96	474	7	53	24.8	11.6	8.75

Prior to the 2005–06 season, harvest by hunting and trapping were not collected separately and trapping harvest estimates included harvest by both hunters and trappers. Trap harvest includes incidental harvest.

*Trappers and minks per trapper include hunters and their harvest. Set-days per mink and minks per 1000 set-days are based only on trapping activity, and do not include hunt harvest or hunter-days afield.

Statewide mink harvest trends, Utah 1982–2017.



MUSKRAT

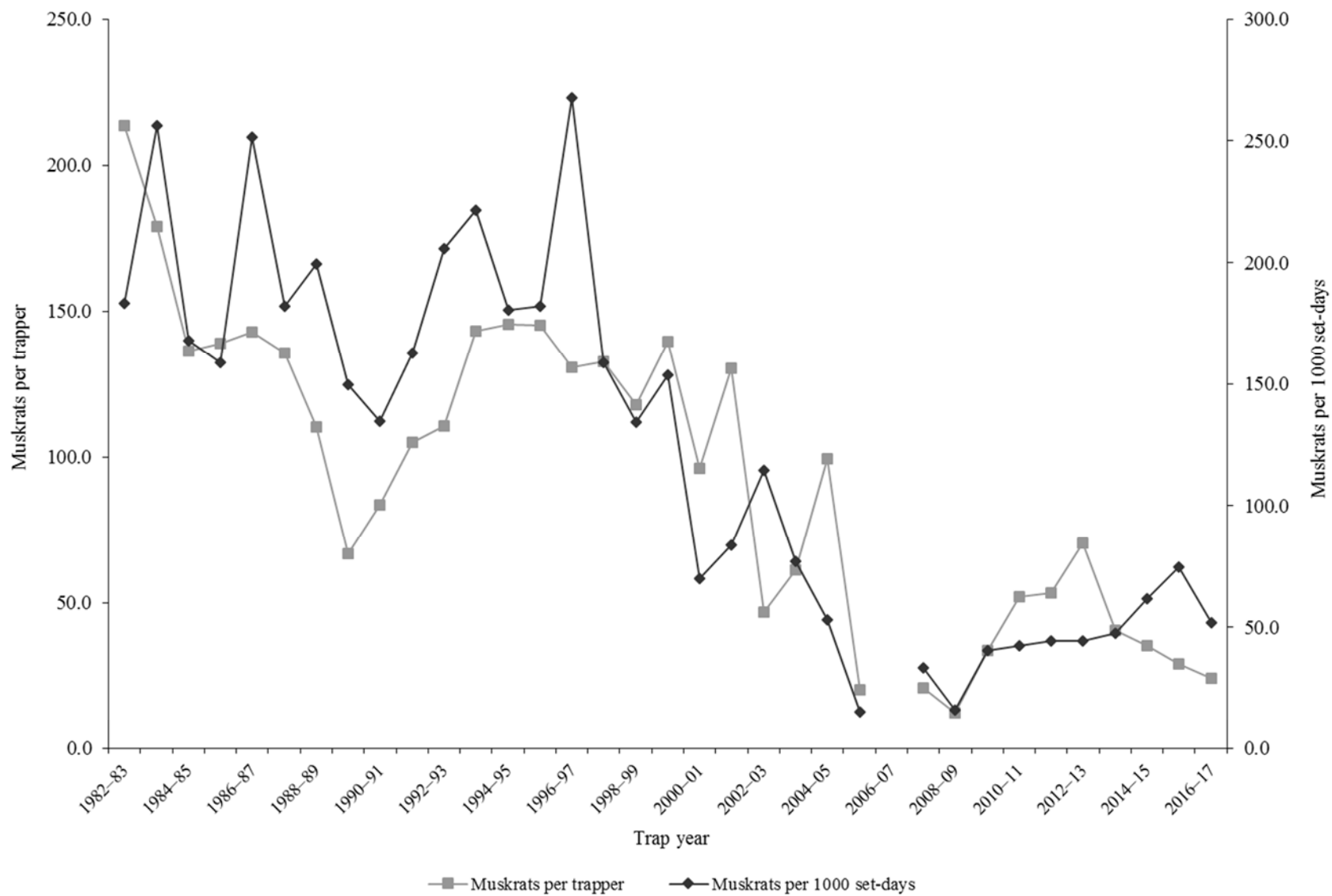
Statewide muskrat harvest statistics*, Utah 1982–2017.

Trap year	Trappers afield	Incidental harvest	Trap harvest	Hunt harvest	Set-days / muskrat	Musk rats / 1000 set-days	Musk rats / trapper	Pelt price (\$)
1982–83	258	—	55137	—	5	183.1	213.7	2.16
1983–84	309	—	55298	—	4	256.2	179.0	2.46
1984–85	400	—	54526	—	6	168.1	136.3	2.45
1985–86	282	—	39195	—	6	158.9	139.0	1.86
1986–87	416	—	59368	—	4	251.7	142.7	2.66
1987–88	432	—	58560	—	5	182.2	135.6	2.46
1988–89	303	—	33400	—	5	199.4	110.2	1.40
1989–90	253	—	16898	—	7	149.6	66.8	0.89
1990–91	85	—	7102	—	7	134.6	83.6	0.91
1991–92	186	—	19547	—	6	162.7	105.1	1.60
1992–93	105	—	11623	—	5	205.9	110.7	1.18
1993–94	157	—	22488	—	5	221.5	143.2	1.89
1994–95	195	—	28369	—	6	180.5	145.5	1.74
1995–96	181	—	26260	—	5	182.2	145.1	2.09
1996–97	179	—	23371	—	4	267.9	130.6	3.59
1997–98	203	—	26907	—	6	158.7	132.5	2.01
1998–99	186	—	21895	—	7	134.1	117.7	1.73
1999–00	151	—	21086	—	7	153.7	139.6	1.00
2000–01	108	—	10376	—	14	69.8	96.1	1.58
2001–02	115	—	14979	—	12	84.0	130.3	2.60
2002–03	135	—	6334	—	9	114.6	46.9	1.59
2003–04	176	—	10777	—	13	77.0	61.2	1.57
2004–05	151	—	15016	—	19	53.1	99.4	1.57
2005–06	41	0	824	—	66	15.3	20.1	3.97
2006–07	81	—	—	—	—	—	—	3.31
2007–08	80	110	1665	—	30	33.3	20.9	3.04
2008–09	98	137	1198	—	63	15.9	12.2	2.49
2009–10	158	164	5341	—	25	40.5	33.8	4.93
2010–11	141	337	7361	—	24	42.2	52.2	5.40
2011–12	150	281	7985	—	23	44.4	53.2	7.28
2012–13	192	117	13534	3	23	44.2	70.5	8.11
2013–14	213	159	8605	0	21	47.5	40.4	8.73
2014–15	168	180	5902	9	16	61.8	35.1	3.76
2015–16	210	41	6130	4	13	74.9	29.2	1.89
2016–17	128	92	3069	3	19	51.8	24.0	3.78
Average	189	147	20592	4	14	124.2	94.2	2.85

Prior to the 2005–06 season, harvest by hunting and trapping were not collected separately and trapping harvest estimates included harvest by both hunters and trappers. Trap harvest includes incidental harvest.

*Trappers and muskrat per trapper include hunters and their harvest. Set-days per muskrat and muskrat per 1000 set-days are based only on trapping activity, and do not include hunt harvest or hunter-days afield.

Statewide muskrat harvest trends, Utah 1982–2017.



Muskrat harvest statistics by county and ecoregion, Utah 2016–17.

County	n	Trappers afield	Trap harvest	Traps set	Trapping days	Set-days	Set-days / muskrat	Musk rats / 1000 set-days	Musk rats / trapper
Beaver	0	0	—	—	—	—	—	—	—
Box Elder	4	10	81	139	81	1488	18.4	54.5	7.8
Iron	0	0	—	—	—	—	—	—	—
Juab	0	0	—	—	—	—	—	—	—
Millard	0	0	—	—	—	—	—	—	—
Tooele	0	0	—	—	—	—	—	—	—
Great Basin totals	4	10	81	139	81	1488	18.4	54.5	7.8
Cache	9	24	921	442	719	11829	12.8	77.8	39.1
Davis	5	13	136	194	398	8811	64.8	15.4	10.4
Morgan	3	8	63	44	254	1813	28.9	34.6	8.0
Piute	0	0	—	—	—	—	—	—	—
Rich	0	0	—	—	—	—	—	—	—
Salt Lake	2	5	128	73	126	2857	22.3	44.9	24.5
Sanpete	1	3	26	8	37	110	4.2	238.1	10.0
Sevier	0	0	—	—	—	—	—	—	—
Summit	2	5	21	16	21	52	2.5	400.0	4.0
Utah	9	24	264	275	620	6038	22.9	43.8	11.2
Wasatch	1	3	52	78	26	785	15.0	66.7	20.0
Weber	8	21	1073	484	861	22931	21.4	46.8	51.3
Rocky Mountain totals	40	105	2684	1614	3061	55225	20.6	48.6	25.7
Daggett	0	0	—	—	—	—	—	—	—
Duchesne	3	8	16	24	215	644	41.0	24.4	2.0
Uintah	3	8	183	84	157	1674	9.1	109.4	23.3
Uintah Basin totals	6	16	199	107	371	2318	11.7	85.8	12.7
Carbon	0	0	—	—	—	—	—	—	—
Emery	1	3	78	8	78	235	3.0	333.3	30.0
Garfield	1	3	26	21	3	21	0.8	1250.0	10.0
Grand	0	0	—	—	—	—	—	—	—
Kane	0	0	—	—	—	—	—	—	—
San Juan	0	0	—	—	—	—	—	—	—
Washington	0	0	—	—	—	—	—	—	—
Wayne	0	0	—	—	—	—	—	—	—
Colorado Plateau totals	2	5	104	29	81	256	2.5	408.2	20.0
Unknown	0	0	—	—	—	—	—	—	—
Statewide totals*	48	126	3069	1889	3594	59288	19.3	51.8	24.4

*Statewide totals for sample size and trappers afield are not totals of the columns because trappers trapped multiple counties.

RACCOON

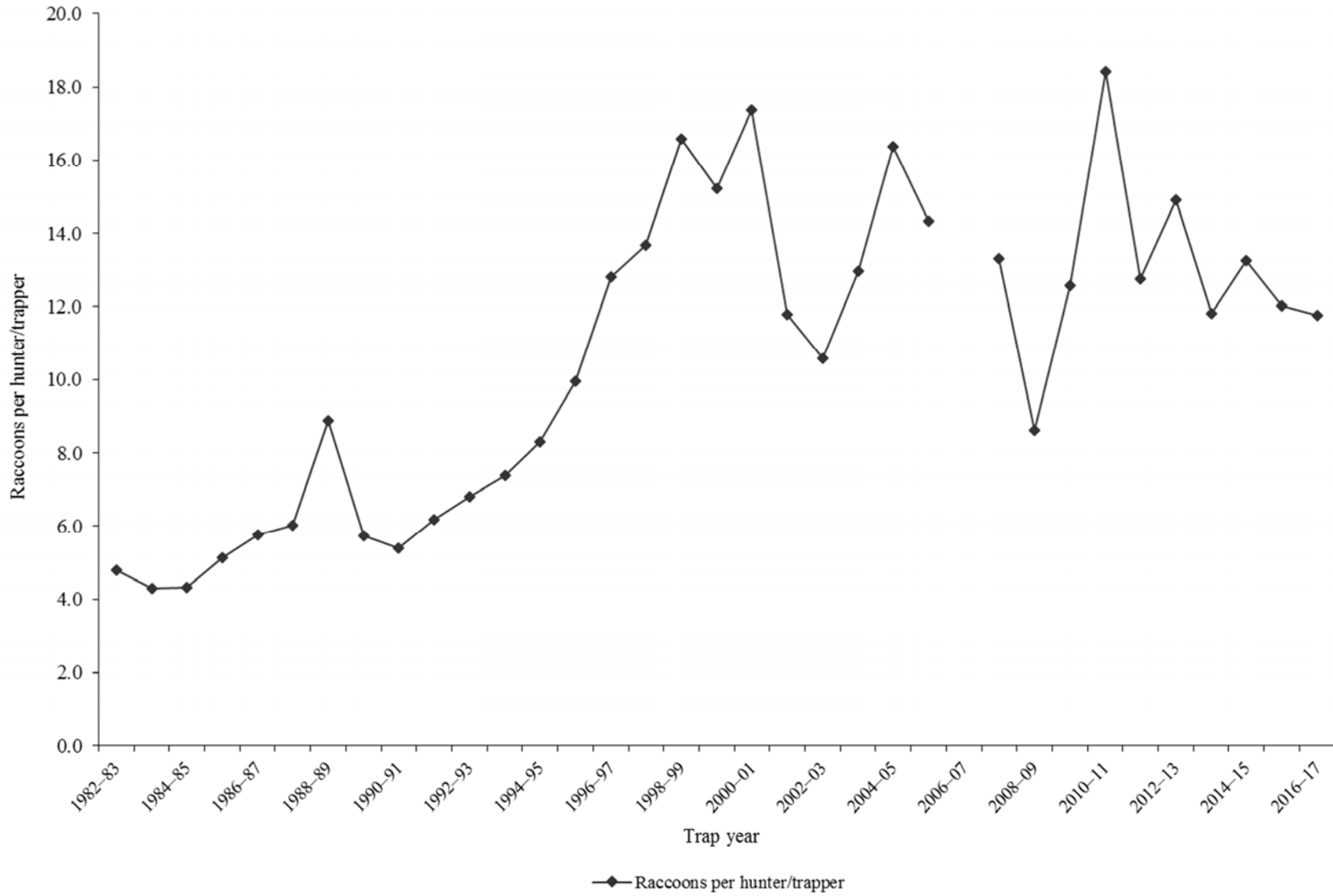
Statewide raccoon harvest statistics*, Utah 1982–2017.

Trap year	Trappers afield	Incidental harvest	Trap harvest	Hunt harvest	Set-days / raccoon	Raccoons / 1000 set-days	Raccoons / trapper	Pelt price (\$)
1982–83	178	—	853	—	19	51.3	4.8	12.34
1983–84	192	—	822	—	40	25.0	4.3	13.51
1984–85	329	—	1417	—	47	21.2	4.3	12.85
1985–86	290	—	1485	—	49	20.5	5.1	9.26
1986–87	418	—	2412	—	39	25.5	5.8	12.62
1987–88	434	—	2619	—	41	24.3	6.0	9.41
1988–89	350	—	3104	—	14	71.9	8.9	7.71
1989–90	430	—	2464	—	17	58.8	5.7	5.78
1990–91	214	—	1156	—	18	54.3	5.4	4.65
1991–92	368	—	2273	—	20	50.3	6.2	4.72
1992–93	272	—	1851	—	17	59.5	6.8	2.57
1993–94	306	—	2259	—	19	53.4	7.4	6.98
1994–95	364	—	3025	—	23	43.8	8.3	6.06
1995–96	293	—	2914	—	10	100.1	9.9	8.07
1996–97	330	—	4228	—	13	77.2	12.8	13.35
1997–98	365	—	4989	—	29	34.5	13.7	9.98
1998–99	468	—	7765	—	22	45.5	16.6	4.95
1999–00	349	—	5317	—	34	29.8	15.2	5.67
2000–01	327	—	5678	—	29	34.8	17.4	5.16
2001–02	321	—	3785	—	32	31.2	11.8	8.04
2002–03	378	—	4001	—	26	38.4	10.6	5.62
2003–04	434	—	5634	—	37	26.8	13.0	10.63
2004–05	391	—	6405	—	35	28.4	16.4	6.54
2005–06	230	—	1761	1537	246	4.1	14.3	9.83
2006–07	325	—	—	—	—	—	—	7.18
2007–08	300	—	2414	1576	50	19.8	13.3	10.85
2008–09	275	—	1639	729	58	17.4	8.6	6.21
2009–10	349	633	3439	946	39	25.9	12.6	7.09
2010–11	292	571	3958	1417	28	36.0	18.4	8.17
2011–12	289	453	3168	520	34	29.6	12.8	7.77
2012–13	377	614	4048	1577	35	28.4	14.9	14.08
2013–14	374	1066	4031	385	48	21.0	11.8	9.50
2014–15	354	743	4046	648	49	20.4	13.3	5.46
2015–16	343	627	3631	490	44	22.7	12.0	4.10
2016–17	264	523	2734	371	55	18.2	11.8	4.92
Average	331	654	3274	927	39	36.8	10.6	8.05

Prior to the 2005–06 season, harvest by hunting and trapping were not collected separately and trapping harvest estimates included all harvest by hunters and trappers.

*Trappers and raccoons per trapper include hunters and their harvest. Set-days per raccoon and raccoons per 1000 set-days are based only on trapping activity, and do not include hunt harvest or hunter-days afield.

Statewide raccoon harvest trends, Utah 1982–2017.



Raccoon trapping harvest statistics by county and ecoregion, Utah 2016–17.

County	n	Trappers afield	Trap harvest	Traps set	Trapping days	Set-days	Set-days / raccoon	Raccoons / 1000 set-days	Raccoons / trapper
Beaver	0	0	—	—	—	—	—	—	—
Box Elder	7	49	553	686	994	14665	26.5	37.7	11.3
Iron	2	4	2	20	60	324	162.0	6.2	0.5
Juab	3	15	65	135	175	1780	27.4	36.5	4.3
Millard	1	1	10	2	20	40	4.0	250.0	10.0
Tooele	1	1	2	3	20	60	30.0	33.3	2.0
Great Basin totals	14	37	632	366	646	7097	25.8	38.7	7.5
Cache	7	49	399	315	1246	7378	18.5	54.1	8.1
Davis	3	9	69	159	237	6747	97.8	10.2	7.7
Morgan	2	4	22	26	190	1180	53.6	18.6	5.5
Piute	1	1	12	10	12	120	10.0	100.0	12.0
Rich	0	0	—	—	—	—	—	—	—
Salt Lake	3	9	93	69	519	2688	28.9	34.6	10.3
Sanpete	2	4	68	46	42	602	8.9	113.0	17.0
Sevier	2	4	76	20	52	260	3.4	292.3	19.0
Summit	1	1	15	3	35	105	7.0	142.9	15.0
Utah	21	441	3822	5481	21336	210294	55.0	18.2	8.7
Wasatch	3	12	188	36	304	1008	5.4	186.5	15.7
Weber	5	25	295	100	2370	18845	63.9	15.7	11.8
Rocky Mountain totals	50	131	5059	1229	5716	50959	38.3	26.1	10.2
Daggett	1	1	7	12	18	216	30.9	32.4	7.0
Duchesne	5	25	1355	235	2565	68080	50.2	19.9	54.2
Uintah	6	36	366	228	1824	14214	38.8	25.7	10.2
Uintah Basin totals	12	31	1728	254	2184	42381	47.8	20.9	28.3
Carbon	0	0	—	—	—	—	—	—	—
Emery	3	9	69	72	1710	19575	283.7	3.5	7.7
Garfield	0	0	—	—	—	—	—	—	—
Grand	0	0	—	—	—	—	—	—	—
Kane	0	0	—	—	—	—	—	—	—
San Juan	4	20	160	490	685	30030	187.7	5.3	8.0
Washington	5	25	185	345	1035	31860	172.2	5.8	7.4
Wayne	0	0	—	—	—	—	—	—	—
Colorado Plateau totals	12	31	414	500	2391	49449	205.5	4.9	7.7
Unknown	0	0	—	—	—	—	—	—	—
Statewide totals*	84	220	2734	2349	10937	149886	54.8	18.2	12.4

*Statewide totals for sample size and trappers afield are not totals of the columns because trappers trapped multiple counties.

Raccoon hunting harvest statistics by county and ecoregion, Utah 2016–17.

County	n	Hunters afield	Hunt harvest	Hunter-days afield	Hunter-days / fox	Foxes / hunter
Beaver	1	3	0	0	—	0.0
Box Elder	4	10	76	63	0.8	7.3
Iron	0	0	—	—	—	—
Juab	0	0	—	—	—	—
Millard	0	0	—	—	—	—
Tooele	1	3	3	3	1.0	1.0
Great Basin totals	6	16	78	65	0.8	5.0
Cache	2	5	8	5	0.7	1.5
Davis	1	3	18	52	2.9	7.0
Morgan	1	3	0	3	—	0.0
Piute	0	0	—	—	—	—
Rich	0	0	—	—	—	—
Salt Lake	1	3	0	3	—	0.0
Sanpete	0	0	—	—	—	—
Sevier	2	5	63	37	0.6	12.0
Summit	1	3	0	0	—	0.0
Utah	4	10	42	50	1.2	4.0
Wasatch	2	5	29	29	1.0	5.5
Weber	6	16	55	1573	28.6	3.5
Rocky Mountain totals	20	52	215	1751	8.2	4.1
Daggett	0	0	—	—	—	—
Duchesne	0	0	—	—	—	—
Uintah	0	0	—	—	—	—
Uintah Basin totals	0	0	—	—	—	—
Carbon	0	0	—	—	—	—
Emery	1	3	78	523	6.7	30.0
Garfield	0	0	—	—	—	—
Grand	0	0	—	—	—	—
Kane	0	0	—	—	—	—
San Juan	0	0	—	—	—	—
Washington	0	0	—	—	—	—
Wayne	0	0	—	—	—	—
Colorado Plateau totals	1	3	78	523	6.7	30.0
Unknown	0	0	—	—	—	—
Statewide totals*	24	63	371	2340	6.3	5.9

*Statewide totals for sample size and hunters afield are not totals of the columns because hunters hunted multiple counties.

RED FOX

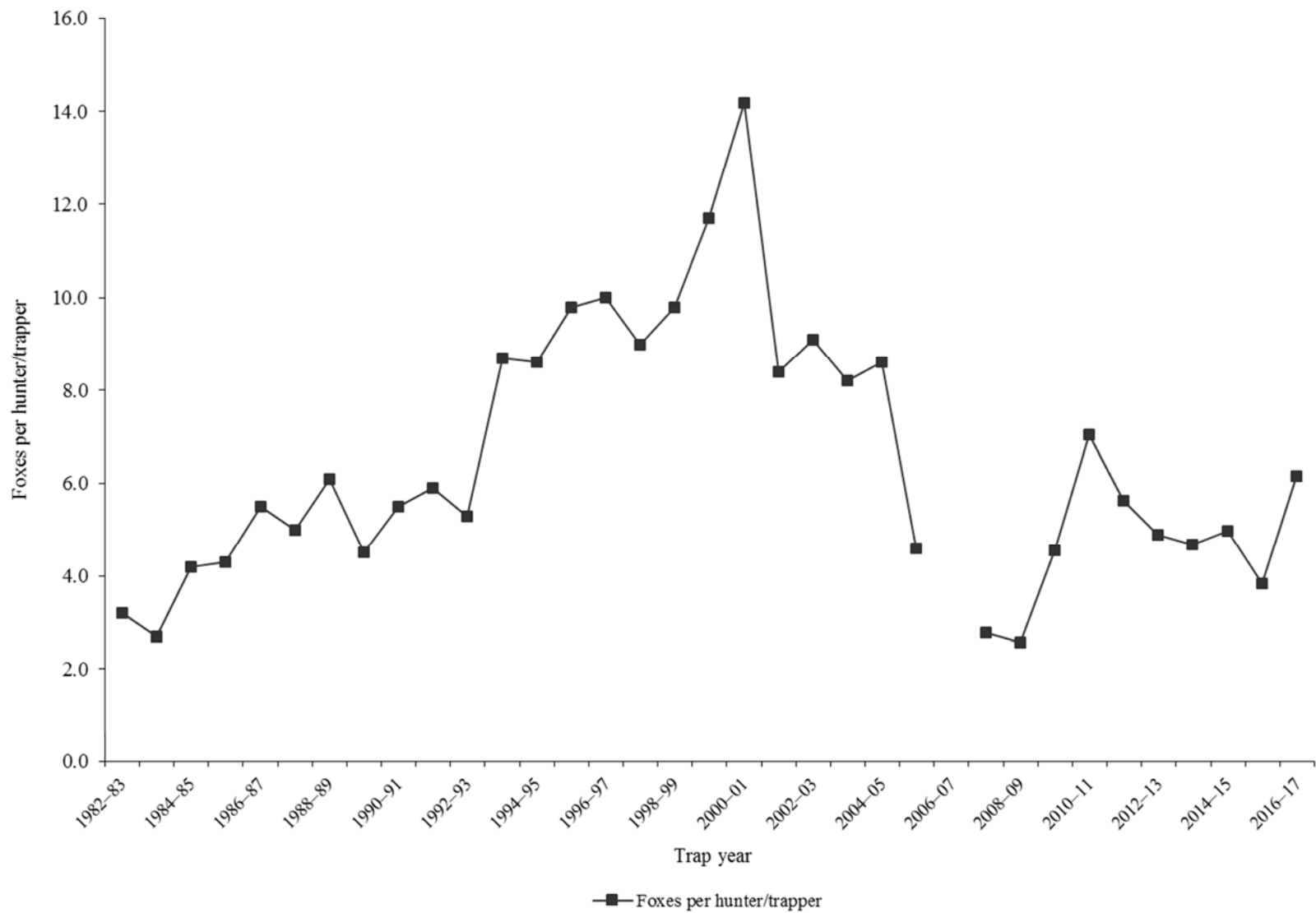
Statewide red fox harvest statistics*, Utah 1982–2017.

Trap year	Trappers afield	Incidental harvest	Trap harvest	Hunt harvest	Set-days / fox	Foxes / 1000 set-days	Foxes / trapper	Pelt price (\$)
1982–83	172	—	544	—	128	7.8	3.2	30.13
1983–84	191	—	523	—	134	7.5	2.7	28.43
1984–85	298	—	1244	—	116	8.7	4.2	25.90
1985–86	316	—	1351	—	74	13.6	4.3	15.83
1986–87	444	—	2446	—	59	17.1	5.5	20.14
1987–88	506	—	2545	—	50	20.2	5.0	13.66
1988–89	398	—	2446	—	34	29.2	6.1	6.57
1989–90	496	—	2250	—	40	25.3	4.5	7.80
1990–91	365	—	1993	—	25	40.0	5.5	6.34
1991–92	623	—	3663	—	28	35.4	5.9	10.70
1992–93	594	—	3126	—	27	37.5	5.3	10.12
1993–94	578	—	5055	—	26	38.9	8.7	14.74
1994–95	509	—	4378	—	36	28.0	8.6	15.34
1995–96	421	—	4115	—	26	38.7	9.8	18.08
1996–97	427	—	4274	—	27	36.8	10.0	17.48
1997–98	414	—	3744	—	32	31.5	9.0	11.31
1998–99	570	—	5600	—	34	29.5	9.8	8.95
1999–00	420	—	4900	—	44	22.7	11.7	14.19
2000–01	375	—	5330	—	52	19.1	14.2	16.92
2001–02	379	—	3192	—	59	16.9	8.4	24.48
2002–03	482	—	4399	—	76	13.1	9.1	28.19
2003–04	568	—	4639	—	71	14.1	8.2	18.07
2004–05	545	—	4674	—	102	9.8	8.6	18.86
2005–06	406	—	1874	—	196	5.1	4.6	24.35
2006–07	496	—	—	—	—	—	—	20.49
2007–08	407	—	1130	—	174	5.7	2.8	21.42
2008–09	339	—	872	—	261	3.8	2.6	17.98
2009–10	461	557	1908	192	102	9.8	4.6	16.32
2010–11	376	216	2435	213	84	12.0	7.0	22.62
2011–12	335	388	1757	128	84	11.9	5.6	42.47
2012–13	380	195	1690	171	83	12.1	4.9	43.50
2013–14	428	519	1934	64	154	6.5	4.7	40.39
2014–15	361	478	1714	79	161	6.2	5.0	24.30
2015–16	361	494	1183	203	180	5.6	3.8	15.37
2016–17	207	351	1175	99	249	4.0	6.2	16.16
Average	419	400	2768	144	89	18.4	6.5	19.65

Prior to the 2005–06 season, harvest by hunting and trapping were not collected separately and trapping harvest estimates included harvest by both hunters and trappers. Trap harvest includes incidental harvest.

*Trappers and foxes per trapper include hunters and their harvest. Set-days per fox and foxes per 1000 set-days are based only on trapping activity, and do not include hunt harvest or hunter-days afield.

Statewide red fox harvest trends, Utah 1982–2017.



Red fox trapping harvest statistics by county and ecoregion, Utah 2016–17.

County	n	Trappers afield	Trap harvest	Traps set	Trapping days	Set-days	Set-days / fox	Foxes / 1000 set-days	Foxes / trapper
Beaver	1	3	0	8	235	706	—	0.0	0.0
Box Elder	1	3	3	5	55	110	42.0	23.8	1.0
Iron	3	8	0	89	432	4996	—	0.0	0.0
Juab	0	0	—	—	—	—	—	—	—
Millard	0	0	—	—	—	—	—	—	—
Tooele	0	0	—	—	—	—	—	—	—
Great Basin totals	5	13	3	102	722	5813	2222.0	0.5	0.2
Cache	4	10	29	65	186	973	33.8	29.6	2.8
Davis	4	10	146	262	481	19400	132.4	7.6	14.0
Morgan	1	3	5	16	196	1177	225.0	4.4	2.0
Piute	0	0	—	—	—	—	—	—	—
Rich	0	0	—	—	—	—	—	—	—
Salt Lake	3	8	16	37	379	1308	83.3	12.0	2.0
Sanpete	2	5	26	105	442	10124	387.0	2.6	5.0
Sevier	5	13	146	272	544	11787	80.5	12.4	11.2
Summit	0	0	—	—	—	—	—	—	—
Utah	5	13	60	99	581	6236	103.7	9.6	4.6
Wasatch	1	3	0	13	26	131	—	0.0	0.0
Weber	6	16	42	152	489	6393	152.8	6.5	2.7
Rocky Mountain totals	31	81	470	1020	3325	57530	122.2	8.2	5.8
Daggett	0	0	—	—	—	—	—	—	—
Duchesne	4	10	531	620	1154	194156	365.6	2.7	50.8
Uintah	7	18	133	238	821	12295	92.2	10.9	7.3
Uintah Basin totals	11	29	664	858	1975	206451	310.7	3.2	23.1
Carbon	0	0	—	—	—	—	—	—	—
Emery	1	3	3	3	3	3	1.0	1000.0	1.0
Garfield	0	0	—	—	—	—	—	—	—
Grand	1	3	16	13	52	262	16.7	60.0	6.0
Kane	0	0	—	—	—	—	—	—	—
San Juan	5	13	16	345	654	20221	1288.3	0.8	1.2
Washington	1	3	3	16	78	471	180.0	5.6	1.0
Wayne	1	3	0	16	314	1883	—	0.0	0.0
Colorado Plateau totals	9	24	38	392	1101	22840	623.6	1.6	1.6
Unknown	0	0	—	—	—	—	—	—	—
Statewide totals*	55	144	1175	2373	7123	292633	249.1	4.0	8.2

*Statewide totals for sample size and trappers afield are not totals of the columns because trappers trapped multiple counties.

Red fox hunting harvest statistics by county and ecoregion, Utah 2016–17.

County	n	Hunters afield	Hunt harvest	Hunter-days afield	Hunter-days / fox	Foxes / hunter
Beaver	0	0	—	—	—	—
Box Elder	1	3	3	3	1.0	1.0
Iron	2	5	5	39	7.5	1.0
Juab	1	3	0	13	—	0.0
Millard	2	5	47	5	0.1	9.0
Tooele	3	8	3	322	123.0	0.3
Great Basin totals	9	24	58	382	6.6	2.4
Cache	1	3	0	5	—	0.0
Davis	0	0	—	—	—	—
Morgan	0	0	—	—	—	—
Piute	1	3	8	0	0.0	3.0
Rich	0	0	—	—	—	—
Salt Lake	0	0	—	—	—	—
Sanpete	2	5	5	5	1.0	1.0
Sevier	2	5	3	13	5.0	0.5
Summit	1	3	0	5	—	0.0
Utah	2	5	3	39	15.0	0.5
Wasatch	1	3	0	10	—	0.0
Weber	1	3	3	3	1.0	1.0
Rocky Mountain totals	11	29	21	81	3.9	0.7
Daggett	0	0	—	—	—	—
Duchesne	1	3	0	0	—	0.0
Uintah	4	10	16	110	7.0	1.5
Uintah Basin totals	5	13	16	110	7.0	1.2
Carbon	1	3	3	3	1.0	1.0
Emery	0	0	—	—	—	—
Garfield	1	3	0	157	—	0.0
Grand	0	0	—	—	—	—
Kane	0	0	—	—	—	—
San Juan	2	5	0	0	—	0.0
Washington	2	5	3	8	3.0	0.5
Wayne	0	0	—	—	—	—
Colorado Plateau totals	6	16	5	167	32.0	0.3
Unknown	0	0	—	—	—	—
Statewide totals*	26	68	99	740	7.4	1.5

*Statewide totals for sample size and hunters afield are not totals of the columns because hunters hunted multiple counties.

RINGTAIL

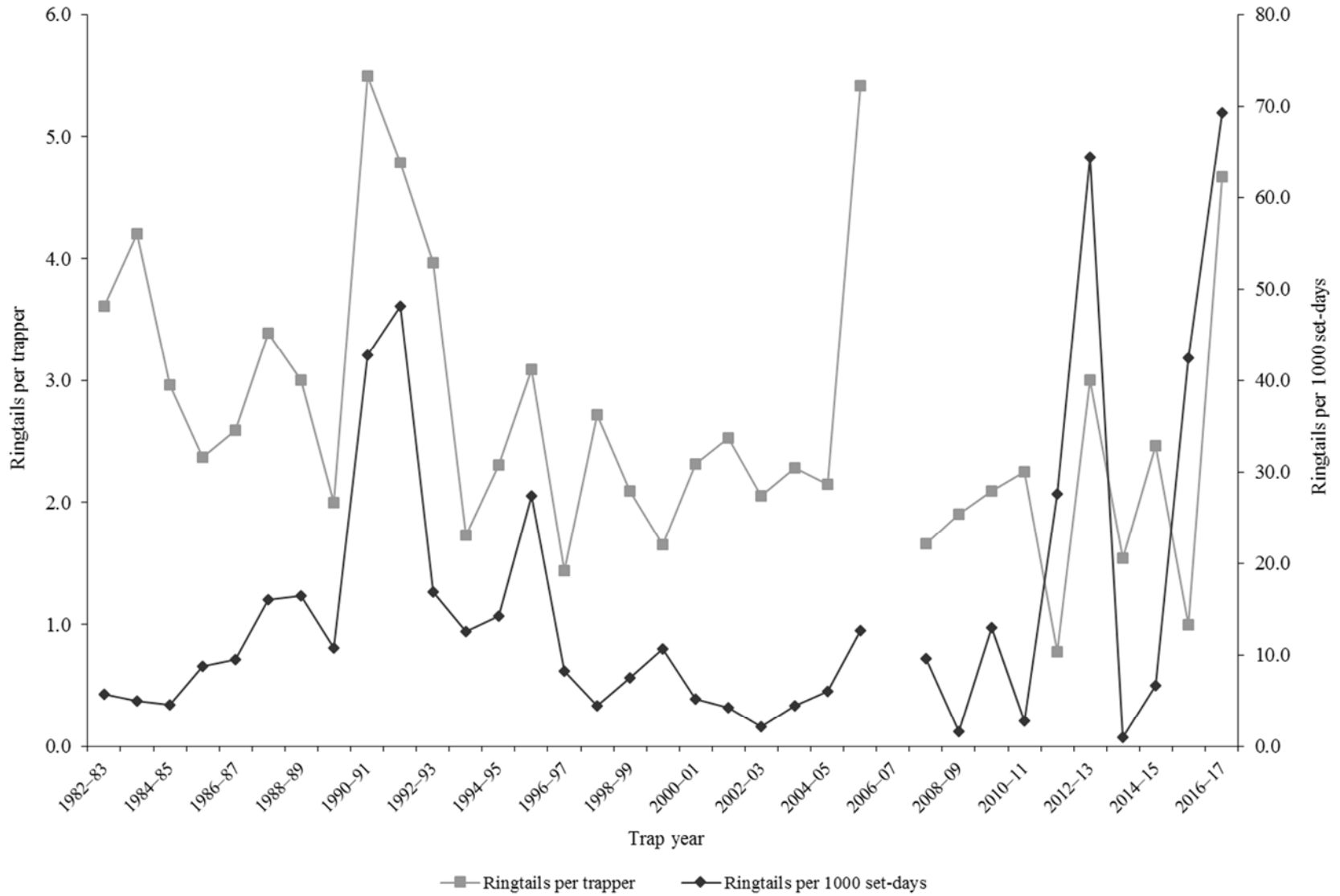
Statewide ringtail harvest statistics*, Utah 1982–2017.

Trap year	Trappers afield	Incidental harvest	Trap harvest	Hunt harvest	Set-days / ringtail	Ringtails / 1000 set-days	Ringtails / trapper	Pelt price (\$)
1982–83	90	—	325	—	176	5.7	3.6	4.40
1983–84	90	—	378	—	203	4.9	4.2	3.96
1984–85	85	—	252	—	218	4.6	3.0	3.15
1985–86	68	—	161	—	114	8.8	2.4	2.69
1986–87	79	—	205	—	105	9.6	2.6	3.64
1987–88	79	—	268	—	62	16.0	3.4	2.40
1988–89	62	—	186	—	61	16.4	3.0	5.70
1989–90	66	—	132	—	93	10.7	2.0	2.65
1990–91	18	—	99	—	23	42.8	5.5	3.50
1991–92	46	—	220	—	21	48.1	4.8	3.22
1992–93	27	—	107	—	59	16.9	4.0	3.97
1993–94	37	—	64	—	80	12.6	1.7	4.04
1994–95	69	—	159	—	70	14.3	2.3	6.41
1995–96	44	—	136	—	37	27.4	3.1	6.96
1996–97	32	—	46	—	122	8.2	1.4	11.68
1997–98	21	—	57	—	227	4.4	2.7	2.99
1998–99	66	—	138	—	134	7.5	2.1	4.17
1999–00	61	—	101	—	93	10.7	1.7	7.03
2000–01	51	—	118	—	194	5.2	2.3	6.00
2001–02	40	—	101	—	236	4.2	2.5	10.29
2002–03	56	—	115	—	474	2.1	2.1	5.20
2003–04	42	—	96	—	223	4.5	2.3	6.83
2004–05	59	—	127	—	165	6.1	2.2	11.12
2005–06	19	—	103	—	79	12.7	5.4	9.31
2006–07	98	—	—	—	—	—	—	12.37
2007–08	65	—	108	—	104	9.6	1.7	14.86
2008–09	31	—	59	—	621	1.6	1.9	10.70
2009–10	22	63	46	—	77	13.0	2.1	15.00
2010–11	16	26	36	—	356	2.8	2.3	18.91
2011–12	18	14	14	—	36	27.6	0.8	12.21
2012–13	7	41	21	0	16	64.5	3.0	15.66
2013–14	24	64	37	0	991	1.0	1.5	17.91
2014–15	13	32	32	0	150	6.7	2.5	17.27
2015–16	18	52	18	0	24	42.4	1.0	12.56
2016–17	18	18	84	0	14	69.3	4.7	23.47
Average	47	39	122	0	166	16.0	2.7	8.64

Prior to the 2005–06 season, harvest by hunting and trapping were not collected separately and trapping harvest estimates included harvest by both hunters and trappers. Trap harvest includes incidental harvest.

*Trappers and ringtails per trapper include hunters and their harvest. Set-days per ringtail and ringtails per 1000 set-days are based only on trapping activity, and do not include hunt harvest or hunter-days afield.

Statewide ringtail harvest trends, Utah 1982–2017.



SPOTTED SKUNK

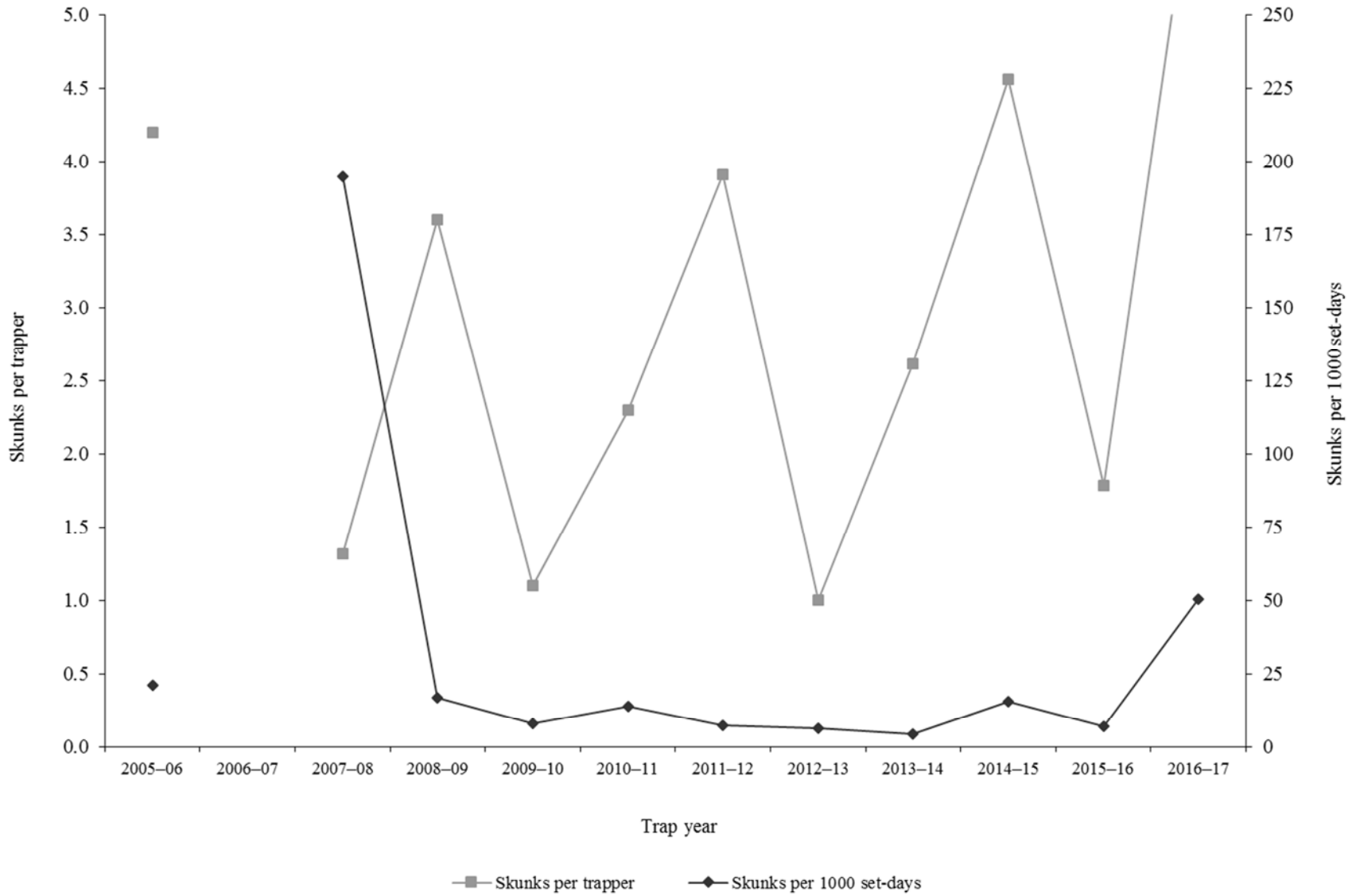
Statewide spotted skunk harvest statistics*, Utah 2005–2017.

Trap year	Trappers afield	Incidental harvest	Trap harvest	Hunt harvest	Set-days / skunk	Skunks / 1000 set-days	Skunks / trapper	Pelt price (\$)
2005–06	34	—	144	—	47	21.2	4.2	5.37
2006–07	106	—	—	—	—	—	—	12.42
2007–08	34	—	45	—	5	194.8	1.3	12.07
2008–09	67	—	238	—	60	16.8	3.6	8.00
2009–10	19	95	21	—	124	8.1	1.1	15.00
2010–11	33	200	76	—	71	14.0	2.3	15.00
2011–12	11	221	14	29	135	7.4	3.9	8.25
2012–13	17	137	17	0	156	6.4	1.0	14.48
2013–14	13	206	17	17	230	4.3	2.6	13.51
2014–15	25	285	114	0	65	15.5	4.6	9.80
2015–16	33	321	55	4	145	6.9	1.8	6.09
2016–17	8	63	50	0	20	50.5	6.3	5.51
Average	33	191	72	8	96	31.4	3.0	10.46

Prior to 2005–06, spotted skunk harvest and trapping activity were combined with striped skunk. In addition, harvest by hunting and trapping were not collected separately and trapping harvest estimates included harvest by both hunters and trappers. Trap harvest includes incidental harvest.

*Trappers and skunks per trapper include hunters and their harvest. Set-days per skunk and skunks per 1000 set-days are based only on trapping activity, and do not include hunt harvest or hunter-days afield.

Statewide spotted skunk* harvest trends, Utah 2005–2017.



*Prior to 2005–06, spotted skunk harvest and trapping activity were combined with striped skunk.

STRIPED SKUNK

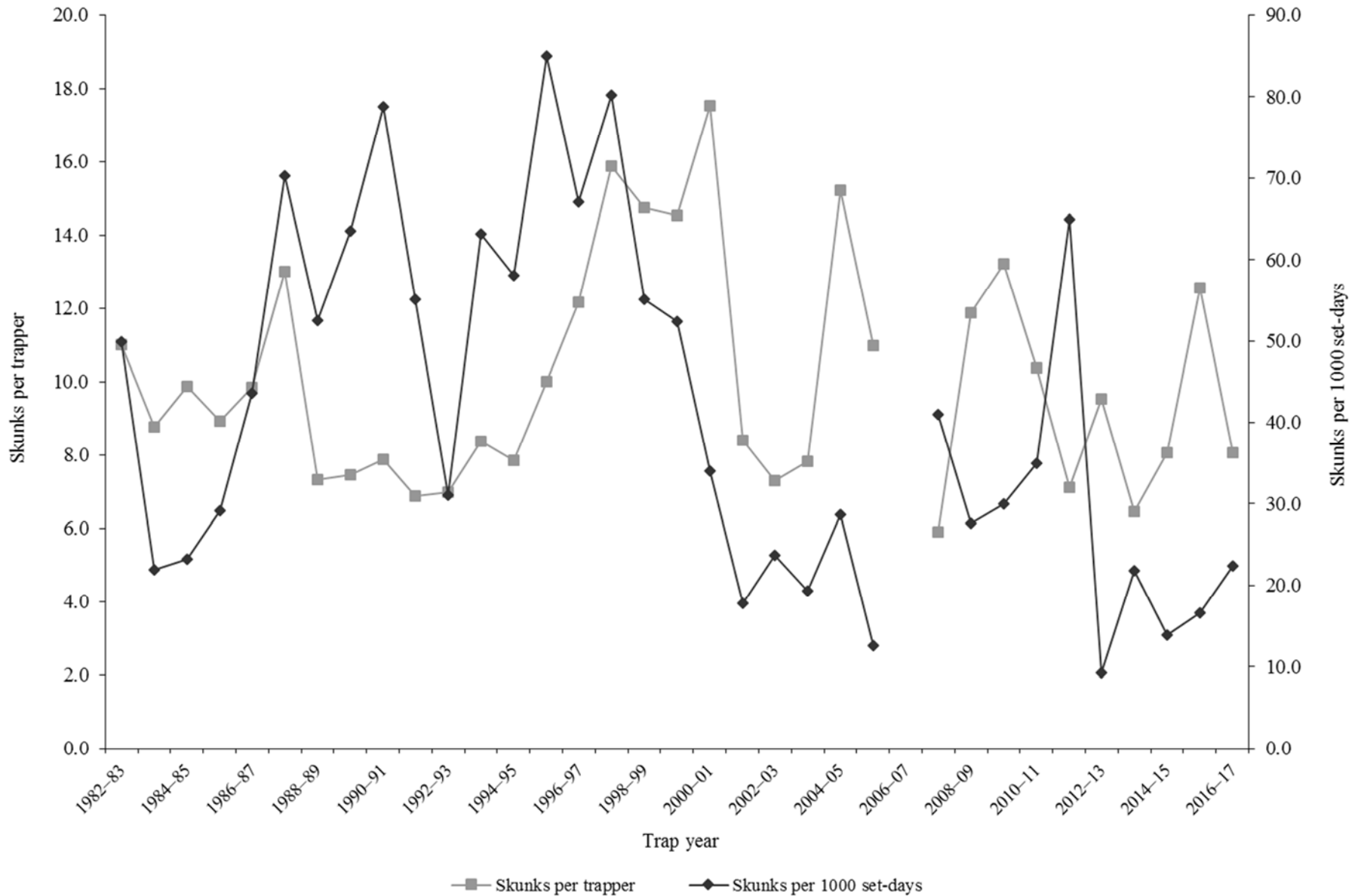
Statewide striped skunk harvest statistics*, Utah 1982–2017.

Trap year	Trappers afield	Incidental harvest	Trap harvest	Hunt harvest	Set-days / skunk	Skunks / 1000 set-days	Skunks / trapper	Pelt price (\$)
1982–83	140	—	1540	—	20	49.9	11.0	3.00
1983–84	144	—	1262	—	45	22.0	8.8	2.85
1984–85	111	—	1097	—	43	23.3	9.9	2.17
1985–86	195	—	1741	—	34	29.1	8.9	—
1986–87	188	—	1851	—	23	43.6	9.8	—
1987–88	185	—	2404	—	14	70.2	13.0	1.05
1988–89	132	—	966	—	19	52.5	7.3	0.30
1989–90	173	—	1289	—	16	63.6	7.5	0.30
1990–91	82	—	645	—	13	78.8	7.9	0.30
1991–92	151	—	1037	—	18	55.2	6.9	4.00
1992–93	132	—	922	—	32	31.1	7.0	5.30
1993–94	175	—	1465	—	16	63.2	8.4	7.35
1994–95	183	—	1438	—	17	58.1	7.9	9.29
1995–96	175	—	1753	—	12	84.9	10.0	6.63
1996–97	142	—	1726	—	15	67.1	12.2	6.00
1997–98	182	—	2890	—	12	80.2	15.9	4.11
1998–99	219	—	3227	—	18	55.1	14.7	5.67
1999–00	188	—	2730	—	19	52.3	14.5	8.50
2000–01	220	—	3857	—	29	34.0	17.5	8.69
2001–02	214	—	1798	—	56	17.8	8.4	6.79
2002–03	237	—	1732	—	42	23.7	7.3	4.24
2003–04	295	—	2305	—	52	19.3	7.8	10.00
2004–05	280	—	4264	—	35	28.7	15.2	4.64
2005–06	95	—	1043	—	79	12.6	11.0	5.37
2006–07	138	—	—	—	—	—	—	6.07
2007–08	144	—	848	—	24	41.0	5.9	4.52
2008–09	143	—	1697	—	36	27.6	11.9	3.15
2009–10	124	1632	1638	—	33	30.0	13.2	6.47
2010–11	154	1136	1597	—	29	35.0	10.4	5.29
2011–12	107	916	602	160	15	65.0	7.1	4.55
2012–13	137	1159	1241	65	108	9.3	9.5	5.01
2013–14	108	1272	654	44	46	21.8	6.5	6.96
2014–15	82	1230	645	16	72	13.9	8.1	4.94
2015–16	111	818	1187	206	60	16.6	12.5	4.40
2016–17	65	727	521	3	45	22.4	8.1	5.95
Average	159	1111	1636	82	34	41.1	10.1	4.97

Prior to 2005–06, harvest and trapping activity included both striped skunk and spotted skunk. In addition, harvest by hunting and trapping were not collected separately and trapping harvest estimates included harvest by both hunters and trappers. Trap harvest includes incidental harvest.

*Trappers and skunks per trapper include hunters and their harvest. Set-days per skunk and skunks per 1000 set-days are based only on trapping activity, and do not include hunt harvest or hunter-days afield.

Statewide striped skunk* harvest trends, Utah 1982–2017.



*Prior to 2005–06, harvest and trapping activity included both striped skunk and spotted skunk.

Striped skunk trapping harvest statistics by county and ecoregion, Utah 2016–17.

County	n	Trappers afield	Trap harvest	Traps set	Trapping days	Set-days	Set-days / skunk	Skunks / 1000 set-days	Skunks / trapper
Beaver	0	0	—	—	—	—	—	—	—
Box Elder	0	0	—	—	—	—	—	—	—
Iron	0	0	—	—	—	—	—	—	—
Juab	0	0	—	—	—	—	—	—	—
Millard	0	0	—	—	—	—	—	—	—
Tooele	0	0	—	—	—	—	—	—	—
Great Basin totals	0	0	—	—	—	—	—	—	—
Cache	4	10	152	86	437	4643	30.6	32.7	14.5
Davis	1	3	84	112	118	5062	60.5	16.5	32.0
Morgan	1	3	0	8	8	24	—	0.0	0.0
Piute	0	0	—	—	—	—	—	—	—
Rich	0	0	—	—	—	—	—	—	—
Salt Lake	1	3	3	5	157	314	120.0	8.3	1.0
Sanpete	0	0	—	—	—	—	—	—	—
Sevier	3	8	120	71	246	2103	17.5	57.2	15.3
Summit	0	0	—	—	—	—	—	—	—
Utah	6	16	65	139	447	6396	97.8	10.2	4.2
Wasatch	0	0	—	—	—	—	—	—	—
Weber	1	3	5	5	18	37	7.0	142.9	2.0
Rocky Mountain totals	17	44	429	426	1431	18578	43.3	23.1	9.6
Daggett	2	5	18	21	94	419	22.9	43.8	3.5
Duchesne	4	10	37	136	126	2922	79.8	12.5	3.5
Uintah	2	5	26	31	139	832	31.8	31.4	5.0
Uintah Basin totals	8	21	81	188	358	4172	51.5	19.4	3.9
Carbon	0	0	—	—	—	—	—	—	—
Emery	0	0	—	—	—	—	—	—	—
Garfield	0	0	—	—	—	—	—	—	—
Grand	0	0	—	—	—	—	—	—	—
Kane	0	0	—	—	—	—	—	—	—
San Juan	0	0	—	—	—	—	—	—	—
Washington	1	3	10	16	78	471	45.0	22.2	4.0
Wayne	0	0	—	—	—	—	—	—	—
Colorado Plateau totals	1	3	10	16	78	471	45.0	22.2	4.0
Unknown	0	0	—	—	—	—	—	—	—
Statewide totals*	23	60	521	630	1868	23222	44.6	22.4	8.7

*Statewide totals for sample size and trappers afield are not totals of the columns because trappers trapped multiple counties.

WEASEL

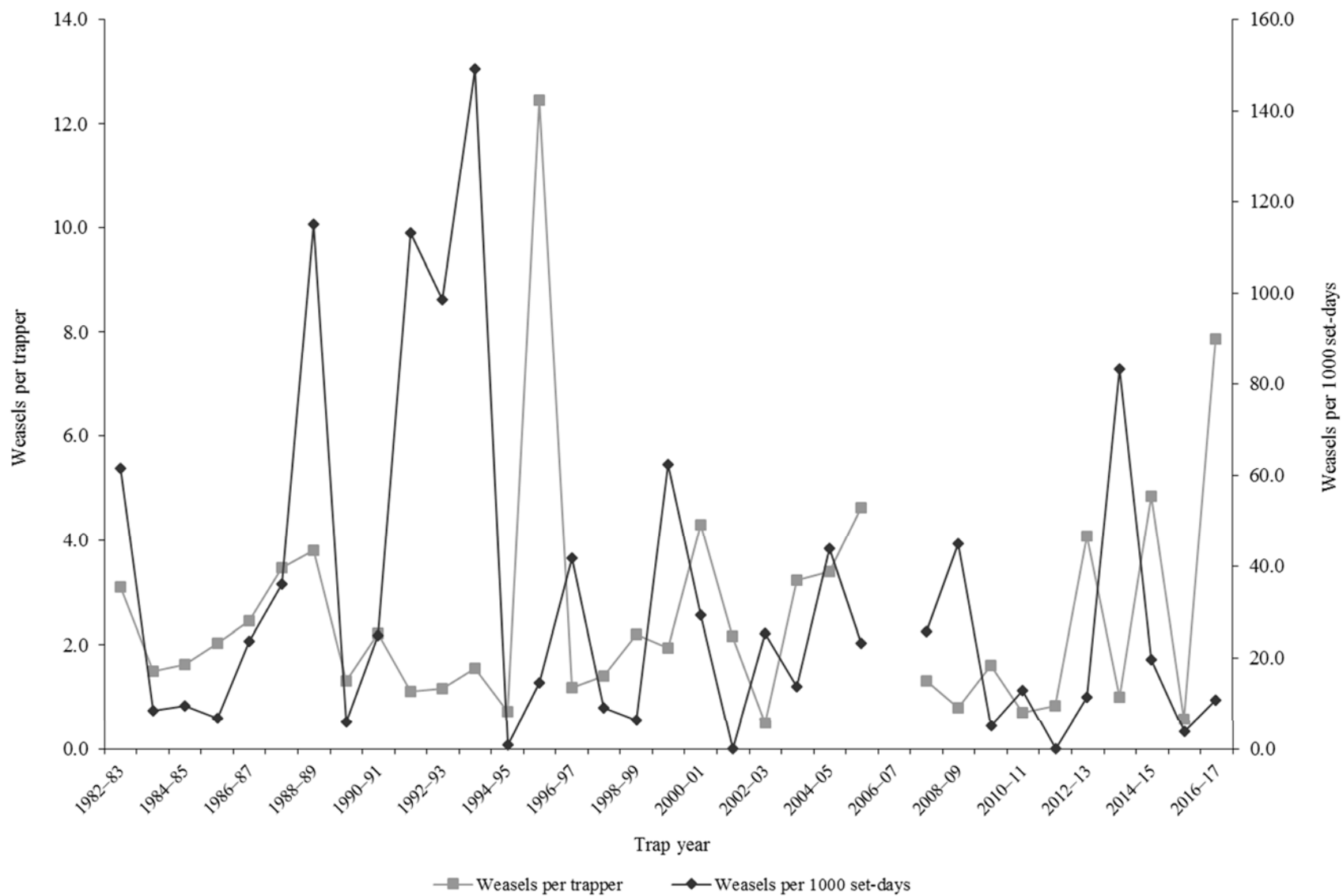
Statewide weasel harvest statistics*, Utah 1982–2017.

Trap year	Trappers afield	Incidental harvest	Trap harvest	Hunt harvest	Set-days / weasel	Weasels / 1000 set-days	Weasels / trapper	Pelt price (\$)
1982–83	19	—	59	—	16	61.5	3.1	1.00
1983–84	22	—	33	—	117	8.5	1.5	0.00
1984–85	46	—	75	—	106	9.4	1.6	0.75
1985–86	33	—	67	—	149	6.7	2.0	0.00
1986–87	50	—	123	—	42	23.6	2.5	1.50
1987–88	61	—	212	—	28	36.1	3.5	1.18
1988–89	24	—	91	—	9	115.0	3.8	0.25
1989–90	25	—	33	—	166	6.0	1.3	0.25
1990–91	14	—	31	—	40	24.8	2.2	0.30
1991–92	17	—	19	—	9	113.1	1.1	0.30
1992–93	24	—	28	—	10	98.6	1.2	0.30
1993–94	20	—	31	—	7	149.0	1.6	5.11
1994–95	18	—	13	—	1189	0.8	0.7	1.57
1995–96	24	—	299	—	69	14.6	12.5	3.08
1996–97	11	—	13	—	24	41.7	1.2	7.40
1997–98	20	—	28	—	111	9.0	1.4	3.03
1998–99	15	—	33	—	157	6.4	2.2	5.50
1999–00	34	—	66	—	16	62.4	1.9	—
2000–01	36	—	155	—	34	29.3	4.3	8.50
2001–02	6	—	13	—	0	—	2.2	—
2002–03	6	—	3	—	39	25.4	0.5	4.76
2003–04	18	—	58	—	73	13.8	3.2	—
2004–05	25	—	85	—	23	43.9	3.4	2.90
2005–06	41	—	190	—	43	23.3	4.6	—
2006–07	49	—	—	—	—	—	—	6.26
2007–08	11	—	15	—	39	25.6	1.3	2.99
2008–09	14	—	11	—	22	44.9	0.8	—
2009–10	29	13	47	—	196	5.1	1.6	7.64
2010–11	23	20	17	—	78	12.8	0.7	7.21
2011–12	25	4	0	21	—	0.0	0.8	4.58
2012–13	27	21	110	0	87	11.5	4.1	—
2013–14	3	10	3	0	12	83.3	1.0	5.00
2014–15	13	13	63	0	51	19.7	4.8	3.89
2015–16	26	15	11	4	258	3.9	0.6	3.06
2016–17	29	8	228	0	93	10.7	7.9	3.55
Average	25	13	67	4	100	34.6	2.6	3.17

Prior to the 2005–06 season, harvest by hunting and trapping were not collected separately and trapping harvest estimates included harvest by both hunters and trappers. Trap harvest includes incidental harvest.

*Trappers and weasels per trapper include hunters and their harvest. Set-days per weasel and weasels per 1000 set-days are based only on trapping activity, and do not include hunt harvest or hunter-days afield.

Statewide weasel harvest trends, Utah 1982–2017.



APPENDIX: UTAH FURBEARER MANAGEMENT ECOREGIONS

