

UTAH FURBEARER ANNUAL REPORT 2014-15



CLARA BRONSON



Publication No. 15-23



UTAH FURBEARER ANNUAL REPORT 2014–15

Prepared by:

Heather H. Bernales
Biometrician

and

Leslie McFarlane
Mammals Program Coordinator

Publication No. 15-23

Annual Performance Report for Federal Aid Project W-65-M, segment 63

State of Utah
Department of Natural Resources
DIVISION OF WILDLIFE RESOURCES

Gregory Sheehan
Director

TABLE OF CONTENTS

Definitions.....	1
Introduction.....	2
Methods.....	2
Results.....	3
Harvest by species.....	11
Badger.....	12
Beaver.....	15
Bobcat.....	18
Coyote.....	28
Gray fox.....	32
Kit fox.....	35
Marten.....	37
Mink.....	40
Muskrat.....	42
Raccoon.....	45
Red fox.....	48
Ringtail.....	51
Spotted skunk.....	53
Striped skunk.....	55
Weasel.....	58
Appendix: Utah furbearer management ecoregions.....	60

DEFINITIONS

Incidental harvest: Furbearers harvested in traps that were intended for a different furbearer species.

Trap year: Time frame corresponding to the 2014–15 furbearer seasons, as outlined in the 2014–15 Utah Furbearer Guidebook.

Trappers afield: Number of furbearer license holders who trapped furbearers during a particular trap year. License holders who took furbearers by means other than trapping, including shooting or with the aid of dogs, are included in this figure except for bobcat.

Total harvest: Number of furbearers of a particular species taken by means of trapping and hunting by furbearer license holders. This figure does not include harvest of unprotected wildlife, such as coyote, muskrat, red fox, raccoon, or striped skunk, taken by persons who did not purchase a furbearer license, nor does it include harvest of furbearers taken for creating a nuisance or causing damage.

Total set-days: Number of traps set during the furbearer season for the trapping of a particular species, multiplied by the number of days these traps were in the field. This figure pertains only to trapping, and does not include days afield by furbearer hunters or pursuers.

Pelt price: Average price paid for pelts of a specific furbearer species harvested in Utah, obtained mainly from a summary of the prices bid at the Utah Trappers Association fur auction, as well as prices from a survey of registered furdealers buying pelts harvested in Utah.

Wildlife Services harvest (coyote only): Number of coyotes taken by USDA-APHIS Wildlife Services in a particular year. Prior to 2006–07, Wildlife Services yearly harvest summaries applied to their fiscal year, which begins October 1 and ends September 30, although most harvest takes place during spring. Beginning in 2006–07, Wildlife Services harvest is reported for the period July 1 to June 30 of the following year.

INTRODUCTION

The furbearer harvest report presents furbearer harvest and trapper/hunter effort trends across the state of Utah, based on data collected from furbearer trappers and hunters. This report represents the furbearer portion of the Annual Performance Report for Federal Aid Project W-65-M, segment 63, grant agreement period July 1, 2014 through June 30, 2015. This Federal Aid project covers the 2014–15 trapping seasons. Additionally this report presents statewide trends since the early 1980s and population trend indicators for bobcats as well as the estimated economic value of Utah’s furbearer harvest each year. Furbearer harvest and trapper/hunter effort may have been more driven by pelt price than by availability, so annual fur harvest should not be used as the sole means to assess/project population sizes.

Furbearers included badger, beaver, bobcat, gray fox, kit fox, mink, marten, ringtail, spotted skunk, and weasel. A furbearer license was required to harvest any of these species, and additional permits were required to harvest bobcats and martens. There were no bag limits for furbearers, except bobcats. Each bobcat permit allowed a person to harvest one bobcat, and a single person could obtain up to 6 bobcat permits in 2014–15. Sales of bobcat permits were not capped. Season dates for badger, gray fox, kit fox, marten, ringtail, spotted skunk, and weasel were September 27, 2014 through February 2, 2015. Bobcat season was November 19, 2014 through February 15, 2015. Season dates for beaver and mink were September 27, 2014 through April 7, 2015.

Coyote, muskrat, red fox, raccoon, and striped skunk were not under the jurisdiction of the Division, and/or were unprotected. Those species could be taken year round without a license; therefore, results presented in this report do not include harvest by persons who did not purchase a furbearer license. It was prohibited to take black-footed ferret, fisher, lynx, river otter, wolf, and wolverine.

METHODS

Furbearer harvest and effort information was obtained from a telephone/web mixed-mode survey of a statistically-valid random sample of furbearer license holders. The accuracy of that survey was dependent upon the following assumptions: (1) a random sample was achieved (i.e., there was no response bias by those who harvested successfully versus those who did not), (2) respondents recorded or remembered data accurately and did not guess or lie, and (3) respondents clearly understood the questions.

Trappers who harvested bobcats and martens were required to bring the animals’ pelts to a Division office or officer to have permanent tags attached and to surrender the lower jaws. Bobcat and marten harvest data presented in this report, such as county of kill and sex of harvest, were collected at that time; as such, that information was not projected. Additional information on bobcat harvest, such as harvest effort by method, trappers-afield, number of sets, and number of days was determined by the survey mentioned in the preceding paragraph. Due to the small number of marten trappers in Utah, we did not attempt to survey marten trappers. Instead, since a separate permit is required to trap marten, we assumed that all those who purchased a marten permit attempted to trap marten.

To determine age structure of the bobcat harvest, a canine tooth from each bobcat jaw was sectioned, and aged using cementum annuli by Matson's Lab in Milltown, Montana. Survival rates were estimated using the Chapman-Robson estimator. Pelt prices were obtained mainly from a summary of the prices bid at the Utah Trappers Association fur auction, as well as from a survey of registered furdealers buying pelts harvested in Utah.

Because some furbearer species in Utah were rare or not highly sought after by trappers, it was not possible to achieve sufficient sample sizes for these species to make valid statistical inferences. Although the trends for statewide harvest and effort were still valid, at the county level, the harvest and effort estimates had low precision and were likely inaccurate. As such, results by county were only reported for species with a sample size ≥ 20 .

Corrections and Clarifications

In an effort to obtain information on how many furbearers of a given species were taken incidentally, furbearer trappers were asked the question "Did you harvest any [species] in traps that were set for a different species, and, if so, how many?" Prior to 2009–10, all incidental harvest was included in the total harvest and harvest effort statistics. In the 2009–10 and 2010–11 annual reports, incidental harvest was included in statewide summaries of total furbearer harvest, but not in species-specific tables. This omission in 2009–10 and 2010–11 caused some confusion because harvest totals did not match between tables. Furthermore, comparisons of species-specific trapping harvest with prior years' numbers were confounded. This annual report was modified, beginning with the 2011–12 report, to include incidental harvest in species-specific statewide historical harvest tables, as well as split out hunt harvest from trapping harvest.

RESULTS

License Sales and General Survey Results

Furbearer licenses were valid for 365 days from the date of purchase. We used the 365-day period of April 1 to March 31 to determine the total number of furbearer licenses sold for the furbearer season. A total of 2,869 furbearer licenses were sold for the 2014–15 season. The percentage of license holders who bought a furbearer license but did not attempt to harvest furbearers was 41%. The number of trappers afield in 2014–15 was 1,689.

Furbearer Harvest , Historical Trends, and Economic Value

The majority of the harvest taken by furbearer license holders in 2014–15 was of non-protected species—coyote, muskrat, and raccoon—and the total harvest of these species has fluctuated considerably over the last ten years. Total harvest of regulated furbearer species (i.e., species with designated trapping seasons) was 6,786 in 2014–15, which was above the 10-yr average of 5,809. The estimated economic value of Utah's furbearer harvest in 2014–15 was \$1,130,784.

Furbearer license sales and survey responses, Utah 1982–2015.

Trap year	Furbearer licenses sold			License holders surveyed		Projection factor	% license holders not afield
	Resident	Nonresident	Total	Total	Percent (%)		
1982–83	—	—	1325	664	50.1	—	—
1983–84	—	—	1367	616	45.1	—	—
1984–85	—	—	1491	806	54.1	—	—
1985–86	—	—	1424	680	47.8	—	—
1986–87	—	—	1342	585	43.6	—	—
1987–88	—	—	1576	731	46.4	—	—
1988–89	—	—	1318	721	54.7	—	—
1989–90	—	—	1084	597	55.1	—	—
1990–91	—	—	949	513	54.1	—	30.0
1991–92	—	—	1210	689	56.9	—	2.2
1992–93	—	—	1426	857	60.1	—	16.0
1993–94	—	—	1315	—	—	—	—
1994–95	—	—	1287	585	45.5	—	7.0
1995–96	—	—	1240	683	55.1	—	21.2
1996–97	—	—	1131	606	53.6	—	25.4
1997–98	—	—	1190	498	41.8	—	19.5
1998–99	—	—	1191	395	33.2	—	19.8
1999–00	1172	39	1211	458	37.8	2.6	11.6
2000–01	1204	20	1224	420	34.3	2.9	12.4
2001–02	956	21	977	302	30.9	3.2	11.6
2002–03	1409	40	1449	514	35.5	2.8	16.3
2003–04	1729	47	1776	597	33.6	3.0	16.9
2004–05	1830	65	1895	615	32.5	3.1	18.2
2005–06	1631	57	1688	260	15.4	6.5	27.7
2006–07	2029	81	2110	262	12.4	8.1	26.7
2007–08	2085	55	2140	563	26.3	3.8	31.8
2008–09	2045	57	2102	750	35.7	2.8	34.8
2009–10	1902	34	1936	798	41.2	2.4	30.2
2010–11	1788	29	1817	555	30.5	3.3	30.1
2011–12	1856	36	1892	531	28.1	3.6	33.3
2012–13	2080	52	2132	622	29.2	3.4	34.4
2013–14	2389	60	2449	726	29.6	3.4	35.4
2014–15	2802	67	2869	907	31.6	3.2	41.1
Average	1807	48	1562	597	40.1	2.8	23.1

Statewide total furbearer harvest* estimates by species, Utah 2005–2015.

Species	Trap year										Average 2005–15
	2005–06	2006–07**	2007–08	2008–09	2009–10	2010–11	2011–12	2012–13	2013–14	2014–15	
Badger	120	—	275	287	334	309	217	302	371	417	292
Beaver	2239	—	745	1165	1910	1052	1026	2276	2021	1388	1536
Bobcat	2926	3377	2437	2062	1167	1002	1245	1365	1870	2919	2037
Coyote	4229	—	7637	6945	6674	8128	5296	5749	5784	6873	6368
Gray fox	603	—	1093	1747	1392	907	1002	1288	1318	1015	1152
Kit fox	183	—	39	104	51	45	110	373	14	145	118
Marten	12	7	21	4	2	36	14	26	16	22	16
Mink	222	—	186	242	395	636	221	867	1012	341	458
Muskrat	824	—	1665	1198	5505	7698	8266	13650	8764	6092	5962
Raccoon	3298	—	3990	2368	5018	5946	4141	6239	5482	5437	4658
Red fox	1874	—	1130	872	2657	2864	2273	2056	2517	2272	2057
Ringtail	103	—	108	59	109	62	28	62	101	64	77
Spotted skunk	144	—	45	238	116	276	264	154	240	399	208
Striped skunk	1043	—	848	1697	3270	2733	1679	2465	1970	1875	1953
Weasel	190	—	15	11	60	37	25	131	13	76	62

*Total harvest includes incidental take.

**Due to errors in the 2006–07 furbearer season telephone survey, harvest and effort data is unavailable for all species but bobcat and marten.

Statewide furbearer trapping harvest statistics* by species, Utah 2014–15.

Species	Trappers afield	Trap harvest	Set-days	Set-days / furbearer	Furbearers / 1000 set-days	Furbearers / trapper	Pelt price (\$)
Badger	70	89	16222	183.2	5.5	1.3	11.69
Beaver	177	1332	35535	26.7	37.5	7.5	11.60
Bobcat	1105	2776	1036043	373.2	2.7	2.5	223.11
Coyote	677	4118	669388	162.5	6.2	6.1	45.88
Gray fox	117	490	121937	248.7	4.0	4.2	16.16
Kit fox	19	95	8506	89.6	11.2	5.0	7.13
Marten	202	22	—	—	—	—	21.96
Mink	54	259	25872	99.7	10.0	4.8	8.57
Muskrat	161	5902	95442	16.2	61.8	36.6	3.76
Raccoon	319	4046	197927	48.9	20.4	12.7	5.46
Red fox	323	1714	276445	161.2	6.2	5.3	24.30
Ringtail	13	32	4745	150.0	6.7	2.5	17.27
Spotted skunk	25	114	7367	64.7	15.5	4.5	9.80
Striped skunk	76	629	45350	72.0	13.9	8.3	4.94
Weasel	13	63	3211	50.8	19.7	5.0	3.89

*Does not include incidental harvest.

Statewide furbearer hunting harvest by species, Utah 2014–15.

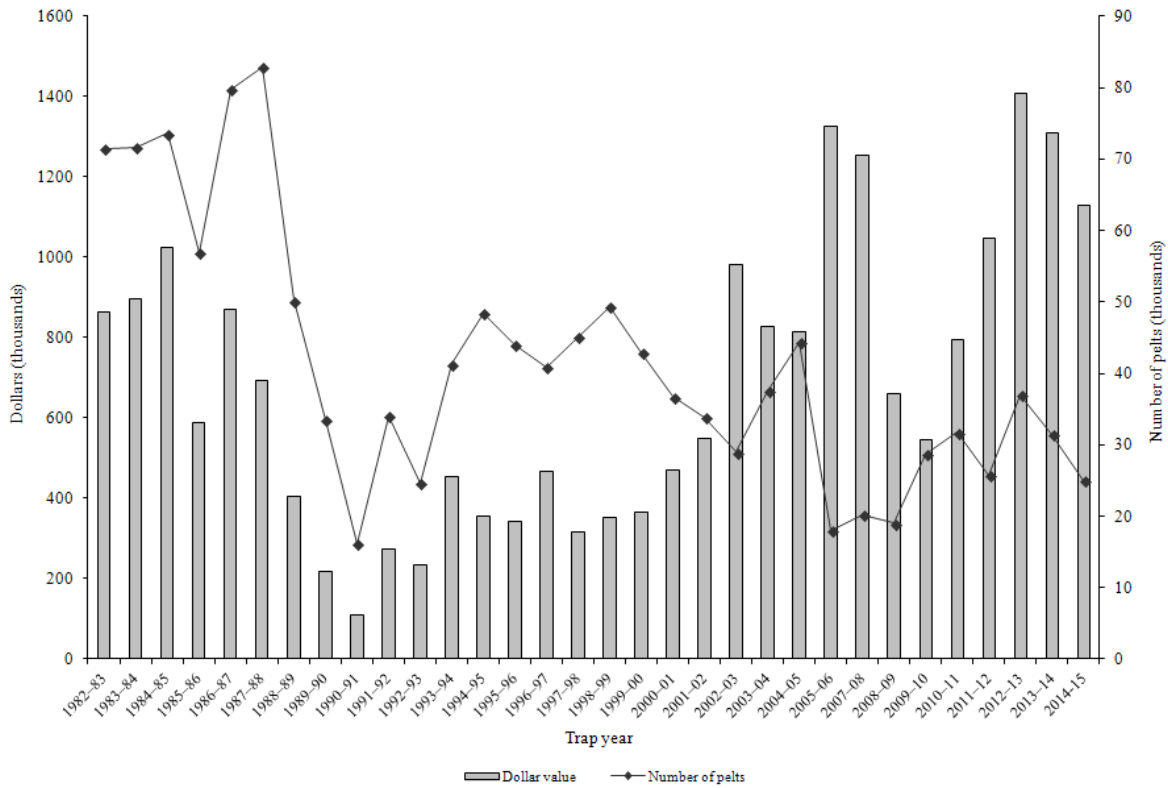
Species	Hunters afield	Hunt harvest	Hunting days	Days / furbearer	Furbearers / hunter
Badger	22	32	127	4.0	1.4
Beaver	6	9	6	0.7	1.5
Bobcat	305	143	4203	29.4	0.5
Coyote	497	2331	12955	5.6	4.7
Gray fox	6	0	6		0.0
Kit fox	3	3	13	4.0	1.0
Mink	0	—	—	—	—
Muskrat	6	9	9	1.0	1.5
Raccoon	54	648	957	1.5	12.1
Red fox	51	79	2708	34.2	1.6
Ringtail	0	—	—	—	—
Spotted skunk	0	—	—	—	—
Striped skunk	6	16	9	0.6	2.5
Weasel	0	—	—	—	—

Number of furbearers harvested in traps set for other species, Utah 2014–15.

Species	Incidental harvest	Trap / hunt harvest	Total harvest	% incidental harvest
Badger	297	120	417	71.2
Beaver	47	1341	1388	3.4
Bobcat	78	2919	2919	2.7
Coyote	424	6449	6873	6.2
Gray fox	525	490	1015	51.7
Kit fox	47	98	145	32.4
Marten	0	22	22	0.0
Mink	82	259	341	24.0
Muskrat	180	5912	6092	3.0
Raccoon	743	4694	5437	13.7
Red fox	478	1794	2272	21.0
Ringtail	32	32	64	50.0
Spotted skunk	285	114	399	71.4
Striped skunk	1230	645	1875	65.6
Weasel	13	63	76	17.1
Total	4461	24952	29335	15.2

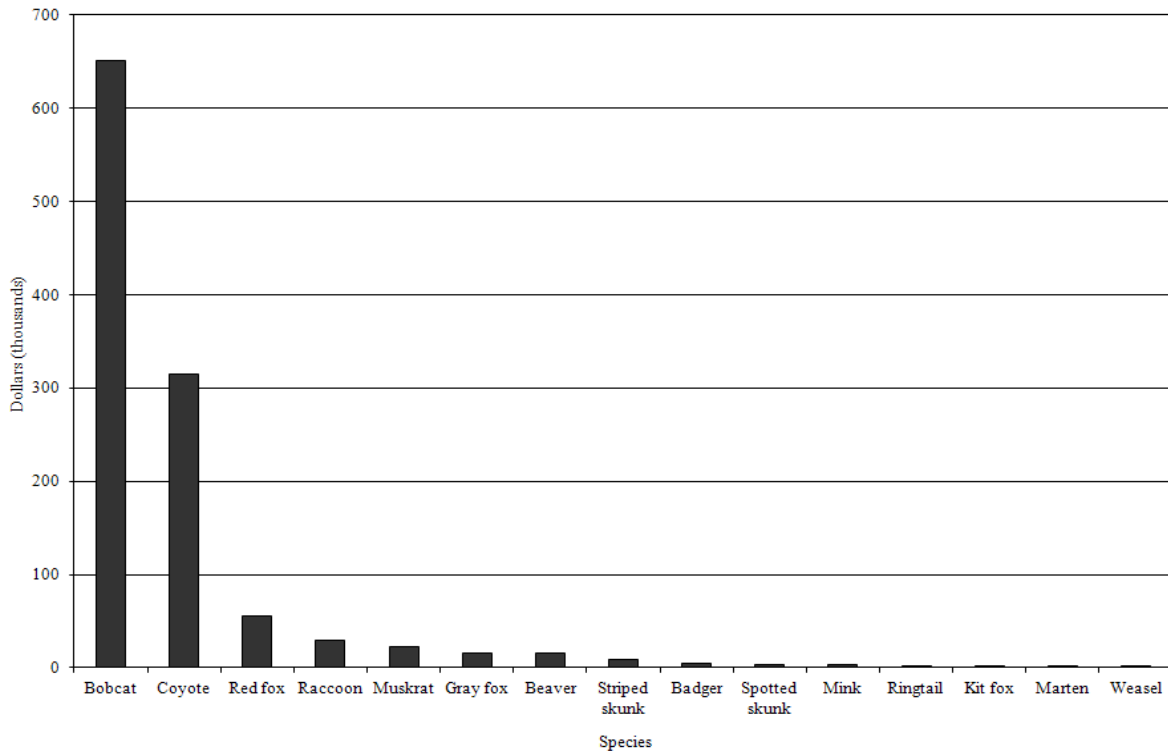
*Incidental bobcat harvest is accounted for in trap harvest.

Estimated economic value of the furbearer harvest taken by trappers in Utah, 1982–2015.



*No data available for 2007.

Proportional economic value of the furbearer harvest taken by trappers in Utah, by species, 2014–15.



Economic value* (in dollars) of furbearer species in Utah's annual furbearer harvest, Utah 1982–2015.

Trap year	Species														Total economic value (\$)
	Badger	Beaver	Bobcat	Coyote	Gray fox	Kit fox	Marten	Mink	Muskrat	Raccoon	Red fox	Ringtail	Skunk	Weasel	
1982–83	5945	20418	434340	203240	37352	7244	10	4394	119096	10526	16391	1430	4620	59	865064
1983–84	4794	25211	498960	152358	34353	8369	1680	3460	136033	11105	14869	1497	3597	0	896285
1984–85	6794	43796	511464	193809	48147	7272	288	4948	133589	18208	32220	794	22126	56	1023511
1985–86	1964	47463	301410	95322	21147	4568	2783	5022	72903	13751	21386	433	0	0	588152
1986–87	3239	93684	316416	166417	36848	5415	565	8802	157919	30439	49262	746	0	185	869938
1987–88	2772	69184	250635	107590	35779	5751	2000	12703	144058	24645	34765	643	2524	250	693300
1988–89	1943	27264	230282	27104	14837	4488	310	9129	46760	23932	16070	1060	290	23	403492
1989–90	1749	40991	85986	28913	5825	1164	0	7018	15039	14242	17550	350	387	8	219223
1990–91	1250	10066	45849	20892	2060	869	0	3437	6463	5375	12636	347	194	9	109446
1991–92	2015	13338	100672	65100	2762	520	0	4924	31275	10729	39194	708	4148	6	275390
1992–93	2308	7399	105390	57740	2988	821	0	2850	13715	4757	31635	425	4887	8	234924
1993–94	1709	16888	148962	128971	8244	1412	0	3970	42502	15768	74511	259	10768	158	454120
1994–95	4555	32270	90536	65890	7417	3425	0	2933	49362	18332	67159	1019	13359	20	356277
1995–96	2904	20502	71241	67722	8818	1363	0	5502	54883	23516	74399	947	11622	613	344032
1996–97	2888	27474	127995	75238	4257	1097	0	2946	83902	56444	74710	537	10356	96	467939
1997–98	1786	39328	75138	34862	3019	336	0	1958	54083	49790	42345	170	11878	85	314778
1998–99	5393	27642	116859	46840	6055	1228	43	2453	37878	38437	50120	575	18297	182	352002
1999–00	5646	20093	118175	67181	6124	531	0	2543	21086	30147	69531	710	23205	—	364973
2000–01	7731	20557	187868	71461	9272	987	—	2303	16394	29298	90184	708	33517	1318	471598
2001–02	4290	18326	275534	70404	15355	1833	—	1477	38945	30431	78140	1039	12208	—	547983
2002–03	7428	16288	588238	177649	24217	1643	—	555	10071	22486	124008	598	7344	14	980538
2003–04	8480	25112	411826	171428	18959	3432	0	5384	16920	59889	83827	656	23050	0	828964
2004–05	5901	37056	433104	144177	13009	2326	0	2847	23575	41889	88152	1412	19785	247	813480
2005–06	1802	39742	1049147	128773	14562	1998	—	2213	3271	32419	45632	959	6374	—	1326894
2007–08	4970	13037	946596	166006	42838	307	—	1736	5067	43288	24200	1604	4375	45	1254069

*Economic value was determined by multiplying average pelt price by total harvest for a given species.

Species with missing values contributed to Utah's annual furbearer harvest but were not included in the economic value estimate due to missing average pelt price or harvest data. No data was available for 2006–07. From 2001 to 2005, average striped skunk pelt price was used to calculate all skunk (spotted and striped) economic value.

Economic value* (in dollars) of furbearer species in Utah's annual furbearer harvest, Utah 1982–2015 (cont.).

Trap year	Species														Total economic value (\$)
	Badger	Beaver	Bobcat	Coyote	Gray fox	Kit fox	Marten	Mink	Muskrat	Raccoon	Red fox	Ringtail	Skunk	Weasel	
2008–09	4996	15319	492186	75399	29816	791	—	1442	2988	14713	15676	631	7256	—	661214
2009–10	6458	22160	261073	98766	23047	483	—	3160	27148	35589	43366	1635	22895	458	546238
2010–11	5338	13421	369686	203226	19019	571	972	7170	41555	48575	64790	1173	18607	267	794368
2011–12	4435	16017	567920	230005	23177	1594	550	3333	60140	32162	96534	342	9823	114	1046146
2012–13	5225	46112	765710	227430	40152	5360	1462	16629	110710	87845	87380	971	14580	—	1409567
2013–14	5834	28951	761918	216267	31870	200	519	16406	76492	52102	101665	1809	16949	65	1311048
2014–15	4875	16101	651258	315333	16402	1034	483	2922	22906	29686	55210	1105	13173	296	1130784
Average	4294	28475	356012	121922	18991	2451	467	4893	52398	30016	54297	853	11006	170	686117

*Economic value was determined by multiplying average pelt price by total harvest for a given species.

Species with missing values contributed to Utah's annual furbearer harvest but were not included in the economic value estimate due to missing average pelt price or harvest data.

HARVEST BY SPECIES

BADGER

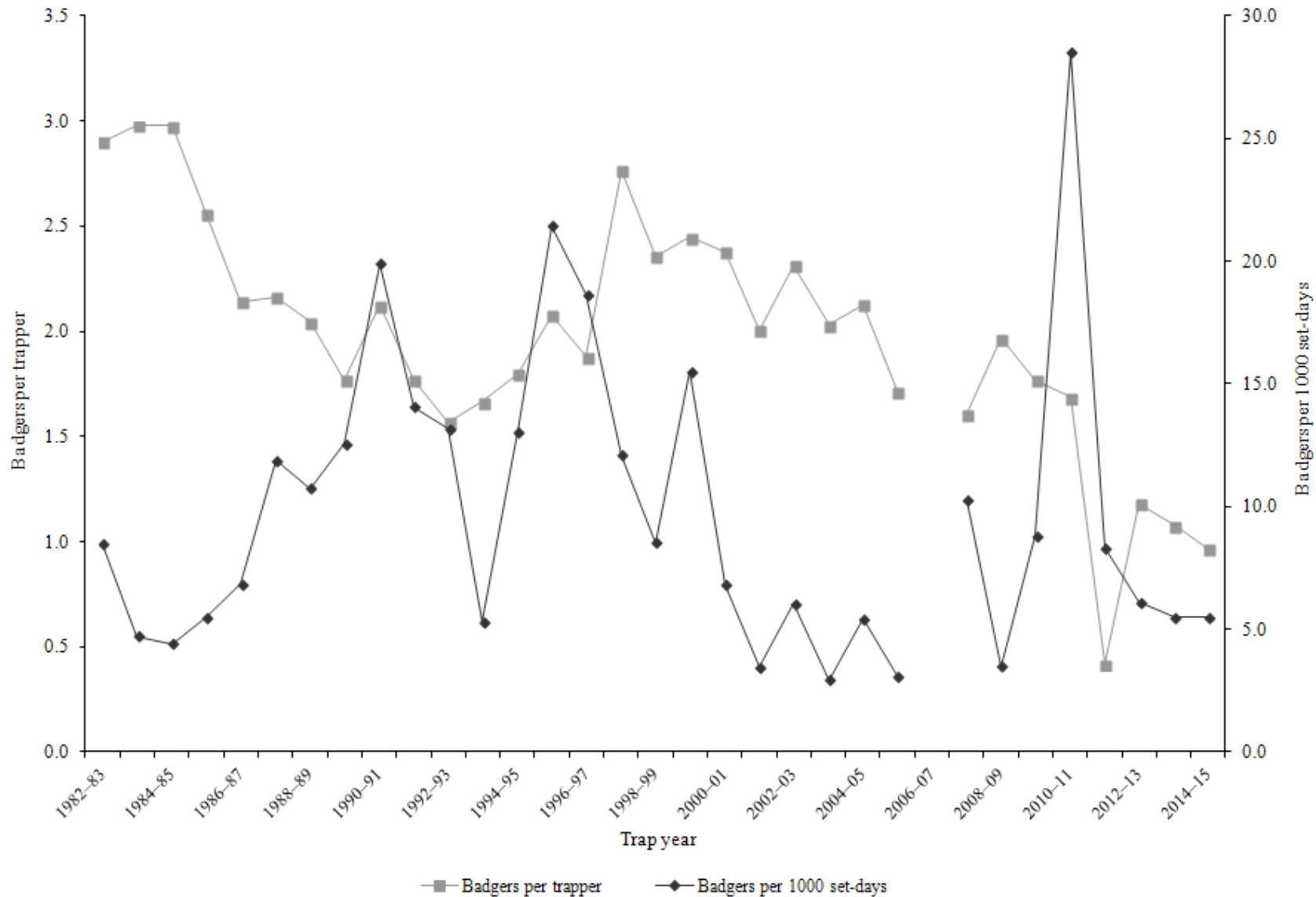
Statewide badger harvest statistics*, Utah 1982–2015.

Trap year	Trappers afield	Incidental harvest	Trap harvest	Hunt harvest	Set-days / badger	Badgers / 1000 set-days	Badgers / trapper	Pelt price (\$)
1982–83	250	—	725	—	118	8.5	2.9	8.20
1983–84	188	—	560	—	212	4.7	3.0	8.56
1984–85	225	—	670	—	227	4.4	3.0	10.14
1985–86	194	—	496	—	182	5.5	2.6	3.96
1986–87	198	—	424	—	146	6.8	2.1	7.64
1987–88	212	—	459	—	84	11.9	2.2	6.04
1988–89	204	—	417	—	93	10.7	2.0	4.66
1989–90	207	—	366	—	80	12.5	1.8	4.78
1990–91	81	—	172	—	50	19.9	2.1	7.27
1991–92	134	—	237	—	71	14.1	1.8	8.50
1992–93	148	—	232	—	76	13.2	1.6	9.95
1993–94	143	—	238	—	188	5.3	1.7	7.18
1994–95	182	—	327	—	77	13.0	1.8	13.93
1995–96	133	—	276	—	47	21.4	2.1	10.52
1996–97	118	—	222	—	54	18.7	1.9	13.01
1997–98	98	—	271	—	83	12.1	2.7	6.59
1998–99	135	—	318	—	117	8.5	2.4	16.96
1999–00	177	—	433	—	64	15.5	2.4	13.04
2000–01	189	—	450	—	147	6.8	2.4	17.18
2001–02	137	—	275	—	288	3.5	2.0	15.60
2002–03	234	—	541	—	165	6.0	2.3	13.73
2003–04	223	—	453	—	341	2.9	2.0	18.72
2004–05	203	—	432	—	184	5.4	2.1	13.66
2005–06	70	—	120	—	324	3.1	1.7	15.02
2006–07	187	—	—	—	—	—	—	18.07
2007–08	171	—	275	—	98	10.2	1.6	14.14
2008–09	146	—	287	—	282	3.5	2.0	17.41
2009–10	78	196	138	—	113	8.8	1.8	19.34
2010–11	115	115	194	—	35	28.5	1.7	17.27
2011–12	110	82	46	89	120	8.3	0.4	20.44
2012–13	99	147	117	38	163	6.1	1.2	17.36
2013–14	91	216	98	57	180	5.5	1.1	15.73
2014–15	92	297	89	32	183	5.5	1.0	11.69
Average	157	176	324	54	143	9.7	2.0	12.31

Prior to the 2005–06 season, harvest by hunting and trapping were not collected separately and trapping harvest estimates included harvest by both hunters and trappers. Trap harvest includes incidental harvest.

*Trappers and badgers per trapper include hunters and their harvest. Set-days per badger and badgers per 1000 set-days are based only on trapping activity, and do not include hunt harvest or hunter-days afield.

Statewide badger harvest trends, Utah 1982–2015.



Badger trapping harvest statistics by county and ecoregion, Utah 2014–15.

County	n	Trappers afield	Trap harvest	Traps set	Trapping days	Set-days	Set-days / badger	Badgers / 1000 set-days	Badgers / trapper
Beaver	2	6	3	32	66	247	78.0	12.8	0.5
Box Elder	1	3	3	3	3	3	1.0	1000.0	1.0
Iron	0	0	—	—	—	—	—	—	—
Juab	0	0	—	—	—	—	—	—	—
Millard	1	3	6	32	47	474	75.0	13.3	2.0
Tooele	0	0	—	—	—	—	—	—	—
Great Basin totals	4	13	13	66	117	724	57.3	17.5	1.0
Cache	1	3	3	44	127	1771	560.0	1.8	1.0
Davis	0	0	—	—	—	—	—	—	—
Morgan	2	6	0	16	89	221	—	0.0	0.0
Piute	0	0	—	—	—	—	—	—	—
Rich	1	3	25	32	79	791	31.3	32.0	8.0
Salt Lake	1	3	3	3	3	3	1.0	1000.0	1.0
Sanpete	0	0	—	—	—	—	—	—	—
Sevier	0	0	—	—	—	—	—	—	—
Summit	0	0	—	—	—	—	—	—	—
Utah	0	0	—	—	—	—	—	—	—
Wasatch	0	0	—	—	—	—	—	—	—
Weber	0	0	—	—	—	—	—	—	—
Rocky Mountain totals	5	16	32	95	297	2787	88.1	11.4	2.0
Daggett	0	0	—	—	—	—	—	—	—
Duchesne	2	6	9	35	63	364	38.3	26.1	1.5
Uintah	3	9	13	28	183	829	65.5	15.3	1.3
Uintah Basin totals	5	16	22	63	247	1193	53.9	18.6	1.4
Carbon	3	9	9	111	422	5015	528.5	1.9	1.0
Emery	2	6	6	38	471	4207	665.0	1.5	1.0
Garfield	1	3	0	6	13	25	—	0.0	0.0
Grand	0	0	—	—	—	—	—	—	—
Kane	1	3	3	32	221	2214	700.0	1.4	1.0
San Juan	0	0	—	—	—	—	—	—	—
Washington	1	3	0	6	13	25	—	0.0	0.0
Wayne	0	0	—	—	—	—	—	—	—
Colorado Plateau totals	8	25	19	193	1140	11487	605.3	1.7	0.8
Unknown	1	3	3	3	32	32	10.0	100.0	1.0
Statewide totals*	22	70	89	421	1833	16222	183.2	5.5	1.3

*Statewide totals for sample size and trappers afield are not totals of the columns because trappers trapped multiple counties.

BEAVER

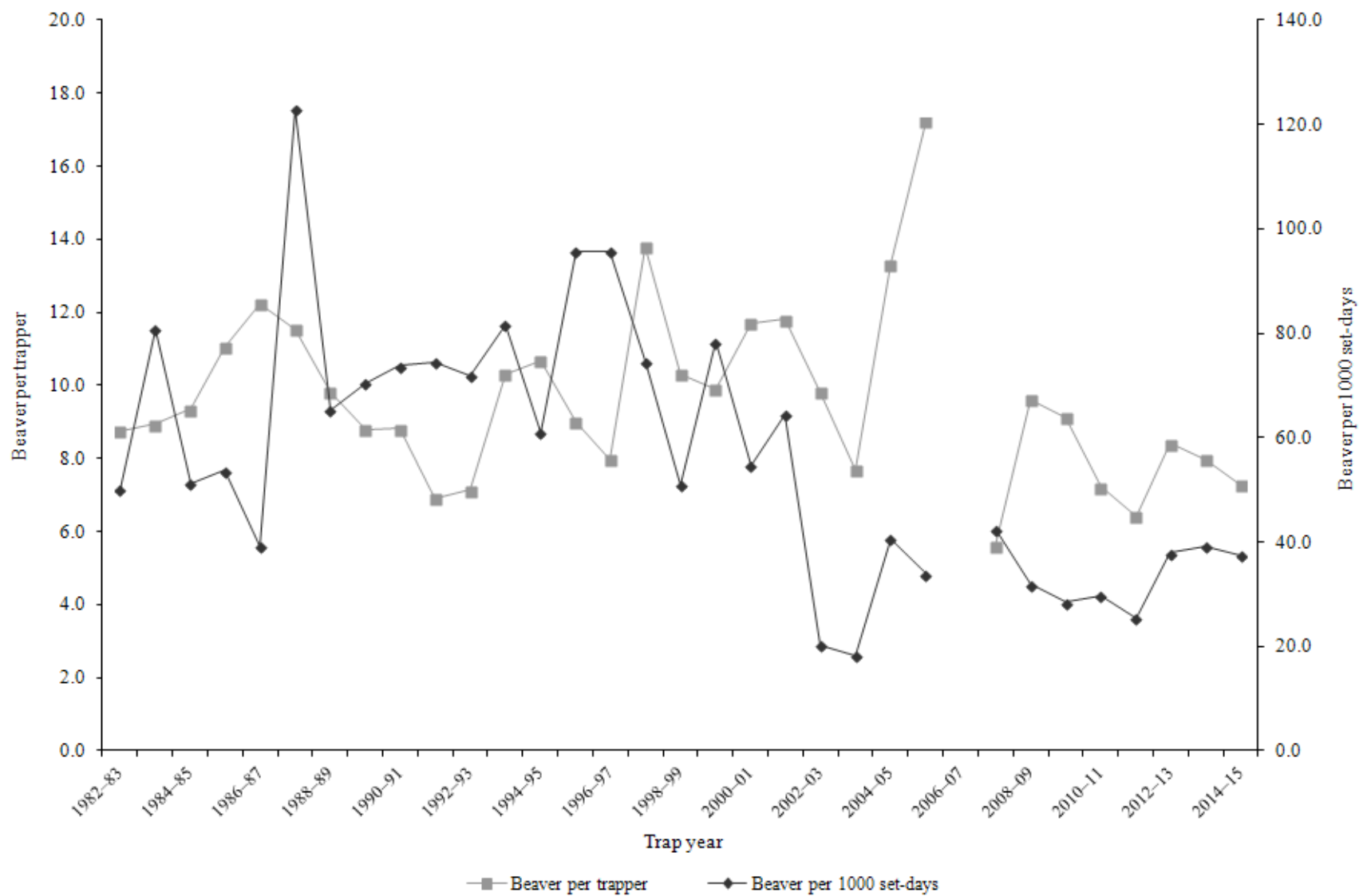
Statewide beaver harvest statistics*, Utah 1982–2015.

Trap year	Trappers afield	Incidental harvest	Trap harvest	Hunt harvest	Set-days / beaver	Beavers / 1000 set-days	Beavers / trapper	Pelt price (\$)
1982–83	181	—	1584	—	20	50.1	8.8	12.89
1983–84	200	—	1788	—	12	80.8	8.9	14.10
1984–85	285	—	2664	—	20	51.3	9.3	16.44
1985–86	293	—	3242	—	19	53.7	11.1	14.64
1986–87	338	—	4138	—	26	39.2	12.2	22.64
1987–88	409	—	4716	—	8	122.9	11.5	14.67
1988–89	277	—	2721	—	15	65.4	9.8	10.02
1989–90	390	—	3436	—	14	70.5	8.8	11.93
1990–91	176	—	1551	—	14	73.8	8.8	6.49
1991–92	216	—	1492	—	13	74.5	6.9	8.94
1992–93	134	—	956	—	14	71.9	7.1	7.74
1993–94	171	—	1761	—	12	81.6	10.3	9.59
1994–95	239	—	2551	—	16	61.0	10.7	12.65
1995–96	170	—	1530	—	10	95.7	9.0	13.40
1996–97	163	—	1299	—	10	95.7	8.0	21.15
1997–98	210	—	2896	—	13	74.6	13.8	13.58
1998–99	286	—	2950	—	20	51.0	10.3	9.37
1999–00	185	—	1830	—	13	78.4	9.9	10.98
2000–01	170	—	1992	—	18	54.7	11.7	10.32
2001–02	143	—	1689	—	16	64.5	11.8	10.85
2002–03	175	—	1720	—	49	20.3	9.8	9.47
2003–04	232	—	1781	—	55	18.2	7.7	14.10
2004–05	200	—	2664	—	25	40.7	13.3	13.91
2005–06	130	—	2239	—	29	33.9	17.2	17.75
2006–07	122	—	—	—	—	—	—	16.31
2007–08	133	—	745	—	24	42.5	5.6	17.50
2008–09	121	—	1165	—	31	31.9	9.6	13.15
2009–10	209	6	1904	—	35	28.5	9.1	11.60
2010–11	144	13	1039	—	34	29.8	7.2	12.76
2011–12	157	18	1008	—	39	25.4	6.4	15.61
2012–13	267	17	2245	14	26	37.9	8.4	20.26
2013–14	240	98	1913	10	25	39.3	8.0	14.33
2014–15	183	47	1332	9	27	37.5	7.3	11.60
Average	211	33	2079	11	22	56.2	9.6	13.36

Prior to the 2005–06 season, harvest by hunting and trapping were not collected separately and trapping harvest estimates included harvest by both hunters and trappers. Trap harvest includes incidental harvest.

*Trappers and beavers per trapper include hunters and their harvest. Set-days per beaver and beavers per 1000 set-days are based only on trapping activity, and do not include hunt harvest or hunter-days afield

Statewide beaver harvest trends, Utah 1982–2015.



Beaver trapping harvest statistics by county and ecoregion, Utah 2014–15.

County	n	Trappers afield	Trap harvest	Traps set	Trapping days	Set-days	Set-days / beaver	Beavers / 1000 set-days	Beavers / trapper
Beaver	0	0	—	—	—	—	—	—	—
Box Elder	5	16	228	63	361	1708	7.5	133.3	14.4
Iron	0	0	—	—	—	—	—	—	—
Juab	0	0	—	—	—	—	—	—	—
Millard	1	3	13	16	32	158	12.5	80.0	4.0
Tooele	0	0	—	—	—	—	—	—	—
Great Basin totals	6	19	240	79	392	1866	7.8	128.8	12.7
Cache	5	16	19	47	98	459	24.2	41.4	1.2
Davis	0	0	—	—	—	—	—	—	—
Morgan	2	6	3	19	76	253	80.0	12.5	0.5
Piute	1	3	190	63	95	1898	10.0	100.0	60.0
Rich	0	0	—	—	—	—	—	—	—
Salt Lake	5	16	35	79	85	522	15.0	66.7	2.2
Sanpete	1	3	6	6	95	190	30.0	33.3	2.0
Sevier	1	3	6	6	63	127	20.0	50.0	2.0
Summit	4	13	44	114	95	1170	26.4	37.8	3.5
Utah	7	22	177	244	269	4865	27.5	36.4	8.0
Wasatch	4	13	66	98	117	705	10.6	94.2	5.3
Weber	5	16	38	89	256	1446	38.1	26.3	2.4
Rocky Mountain totals	35	111	585	765	1249	11634	19.9	50.3	5.3
Daggett	1	3	3	3	6	6	2.0	500.0	1.0
Duchesne	3	9	196	275	376	12368	63.1	15.9	20.7
Uintah	9	28	234	196	845	6421	27.4	36.5	8.2
Uintah Basin totals	13	41	433	474	1227	18796	43.4	23.1	10.5
Carbon	2	6	32	54	187	1341	42.4	23.6	5.0
Emery	2	6	16	19	89	335	21.2	47.2	2.5
Garfield	1	3	3	6	13	25	8.0	125.0	1.0
Grand	0	0	—	—	—	—	—	—	—
Kane	0	0	—	—	—	—	—	—	—
San Juan	1	3	19	32	47	474	25.0	40.0	6.0
Washington	1	3	3	76	44	1063	336.0	3.0	1.0
Wayne	0	0	—	—	—	—	—	—	—
Colorado Plateau totals	7	22	73	187	380	3239	44.5	22.5	3.3
Unknown	0	0	—	—	—	—	—	—	—
Statewide totals*	56	177	1332	1506	3249	35535	26.7	37.5	7.5

*Statewide totals for sample size and trappers afield are not totals of the columns because trappers trapped multiple counties.

BOBCAT

Statewide bobcat trapping harvest statistics, Utah 1982–2015.

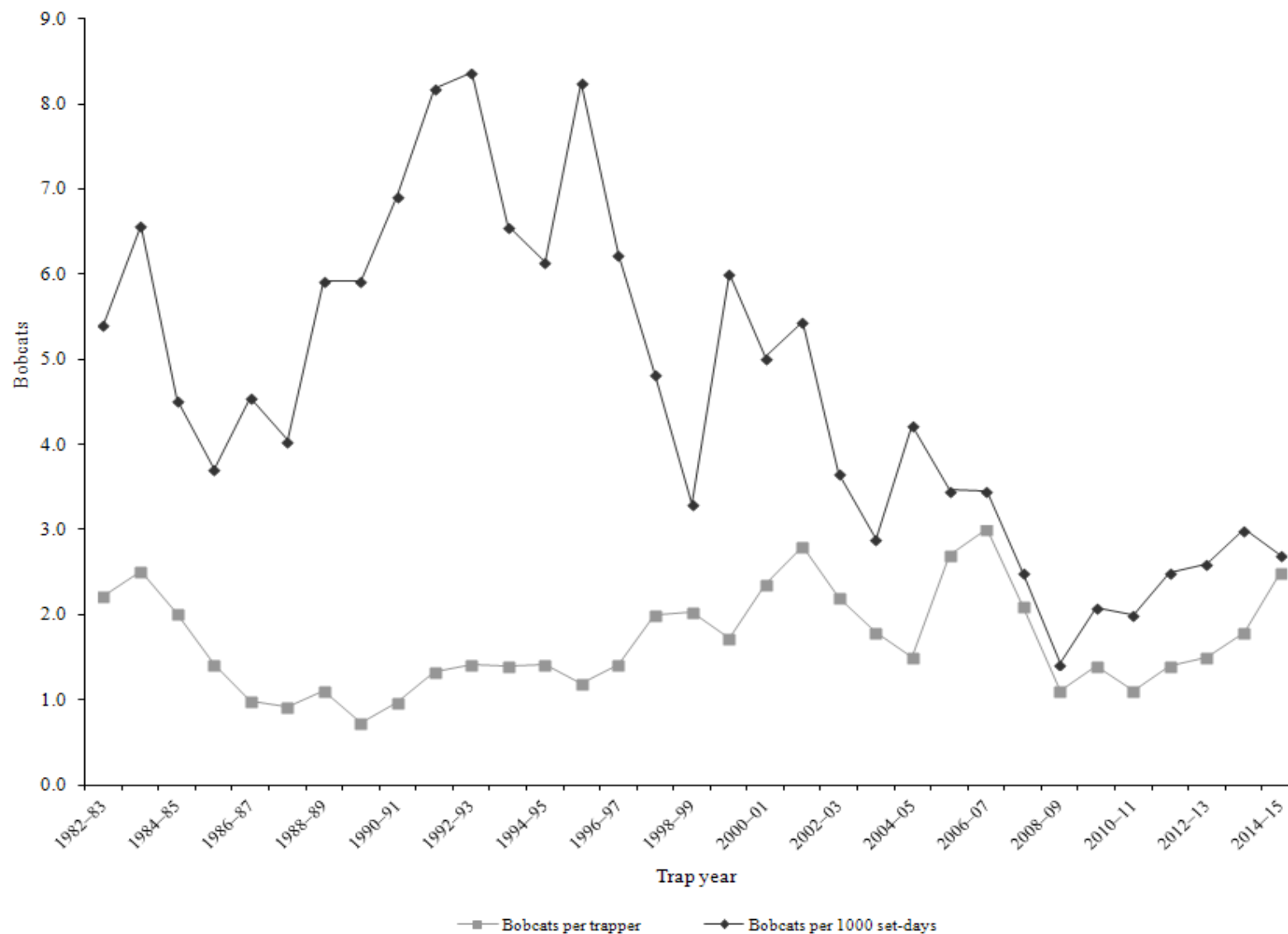
Trap year	Trappers afield	Trap harvest	Set-days	Set-days / bobcat	Bobcats / 1000 set-days	Bobcats / trapper	Pelt price (\$)
1982–83	1145	2540	469979	185	5.4	2.2	171.00
1983–84	1050	2640	401841	152	6.6	2.5	189.00
1984–85	1253	2532	559480	221	4.5	2.0	202.00
1985–86	1083	1530	411493	269	3.7	1.4	197.00
1986–87	1036	1024	224778	220	4.6	1.0	309.00
1987–88	1108	1023	252680	247	4.0	0.9	245.00
1988–89	941	1042	175990	169	5.9	1.1	221.00
1989–90	1167	843	142360	169	5.9	0.7	102.00
1990–91	542	527	76218	145	6.9	1.0	87.00
1991–92	726	968	118293	122	8.2	1.3	104.00
1992–93	827	1171	139949	120	8.4	1.4	90.00
1993–94	900	1256	191367	152	6.6	1.4	118.60
1994–95	914	1293	210522	163	6.1	1.4	70.02
1995–96	749	896	108594	121	8.3	1.2	79.51
1996–97	615	866	138899	160	6.2	1.4	147.80
1997–98	619	1234	255147	207	4.8	2.0	60.89
1998–99	1031	2092	633774	303	3.3	2.0	55.86
1999–00	828	1430	238152	167	6.0	1.7	82.64
2000–01	852	2008	399609	199	5.0	2.4	93.56
2001–02	666	1866	342678	184	5.4	2.8	147.66
2002–03	984	2176	593692	273	3.7	2.2	270.33
2003–04	1133	2027	701383	346	2.9	1.8	203.17
2004–05	1300	1954	462019	236	4.2	1.5	221.65
2005–06	979	2625	757380	289	3.5	2.7	358.56
2006–07	1017	3037	877870	289	3.5	3.0	197.53
2007–08	985	2091	836519	400	2.5	2.1	388.43
2008–09	1630	1796	1258813	701	1.4	1.1	238.69
2009–10	717	1017	488709	481	2.1	1.4	223.71
2010–11	771	846	416474	492	2.0	1.1	368.95
2011–12	755	1094	437912	400	2.5	1.4	456.16
2012–13	836	1214	475902	392	2.6	1.5	560.96
2013–14	953	1690	562430	333	3.0	1.8	407.44
2014–15	1105	2776	1036043	373	2.7	2.5	223.11
Average	946	1610	436271	263	4.6	1.7	208.86

Prior to the 2005–06 season, harvest by hunting and trapping were not collected separately and trapping harvest estimates included harvest by both hunters and trappers. Trap harvest includes incidental harvest.

Statewide bobcat hunting harvest statistics, Utah 2005–2015.

Trap year	Hunters afield	Hunt harvest	Hunter-days afield	Hunter-days / bobcat	Bobcats / hunter
2005–06	612	301	8194	27	0.5
2006–07	440	340	10408	31	0.8
2007–08	557	346	10089	29	0.6
2008–09	438	266	7360	28	0.6
2009–10	370	150	5253	35	0.4
2010–11	355	156	5888	38	0.4
2011–12	329	151	4146	28	0.5
2012–13	206	151	2739	18	0.7
2013–14	182	180	2901	16	1.0
2014–15	305	143	4203	29	0.5
Average	379	218	6118	28	0.6

Statewide bobcat trapping harvest trends, Utah 1982–2015.



Bobcat trapping harvest statistics by county and ecoregion, Utah 2014–15.

County	n	Trappers afield	Trap harvest**	Traps set	Trapping days	Set-days	Set-days / bobcat	Bobcats / 1000 set-days	Bobcats / trapper
Beaver	22	91	99	4801	1439	82306	831.4	1.2	1.1
Box Elder	9	37	144	1708	796	49799	345.8	2.9	3.9
Iron	23	95	127	4772	1555	107504	846.5	1.2	1.3
Juab	14	58	136	1902	1077	42044	309.1	3.2	2.3
Millard	7	29	95	1374	462	27347	287.9	3.5	3.3
Tooele	17	70	83	2772	1167	59830	720.8	1.4	1.2
Great Basin totals	92	379	684	17328	6496	368831	539.2	1.9	1.8
Cache	7	29	8	1204	540	23330	2916.3	0.3	0.3
Davis	4	16	2	1023	120	8687	4343.5	0.2	0.1
Morgan	4	16	35	912	301	8076	230.7	4.3	2.2
Piute	7	29	69	817	247	6695	97.0	10.3	2.4
Rich	6	25	17	1497	417	23491	1381.8	0.7	0.7
Salt Lake	3	12	7	322	95	2660	380.0	2.6	0.6
Sanpete	10	41	33	1293	532	19490	590.6	1.7	0.8
Sevier	12	49	180	2236	759	52014	289.0	3.5	3.7
Summit	7	29	30	1361	400	25590	853.0	1.2	1.0
Utah	16	66	83	2100	788	27565	332.1	3.0	1.3
Wasatch	3	12	20	474	99	4661	233.1	4.3	1.7
Weber	5	21	12	841	227	7128	594.0	1.7	0.6
Rocky Mountain totals	84	346	496	14081	4525	209386	422.1	2.4	1.4
Daggett	7	29	20	718	239	5700	285.0	3.5	0.7
Duchesne	16	66	127	2628	951	55430	436.5	2.3	1.9
Uintah	28	115	183	5134	2242	106946	584.4	1.7	1.6
Uintah Basin totals	51	210	330	8480	3432	168077	509.3	2.0	1.6
Carbon	15	62	121	2636	1534	102146	844.2	1.2	2.0
Emery	9	37	49	1341	619	15470	315.7	3.2	1.3
Garfield	21	87	207	2166	1155	41161	198.8	5.0	2.4
Grand	3	12	105	610	313	18017	171.6	5.8	8.8
Kane	16	66	297	2473	1357	44035	148.3	6.7	4.5
San Juan	10	41	285	1089	660	22301	78.2	12.8	7.0
Washington	11	45	165	1642	421	14746	89.4	11.2	3.7
Wayne	9	37	36	1299	697	21725	603.5	1.7	1.0
Colorado Plateau totals	94	388	1265	13255	6756	279602	221.0	4.5	3.3
Unknown	3	12	1	507	247	10147	10147.0	0.1	0.1
Statewide totals*	268	1105	2776	53651	21456	1036043	373.2	2.7	2.5

*Statewide totals for sample size and trappers afield are not totals of the columns because trappers trapped multiple counties.

**Total harvest numbers are from pelt check-in, while numbers of trappers afield and effort are determined from harvest survey.

Bobcat hunting harvest statistics by county and ecoregion, Utah 2014–15.

County	n	Hunters afield	Hunt harvest**	Hunter-days afield	Hunter-days / bobcat	Bobcats / hunter
Beaver	4	16	7	309	44.1	0.4
Box Elder	8	33	14	198	14.1	0.4
Iron	4	16	1	252	252.0	0.1
Juab	6	25	5	157	31.4	0.2
Millard	7	29	9	140	15.6	0.3
Tooele	9	37	3	243	81.0	0.1
Great Basin totals	38	157	39	1299	33.3	0.2
Cache	5	21	11	219	19.9	0.5
Davis	0	1	1	—	—	—
Morgan	3	12	5	58	11.6	0.4
Piute	2	8	1	45	45.0	0.1
Rich	0	0	—	—	—	—
Salt Lake	0	1	1	—	—	—
Sanpete	3	12	17	78	4.6	1.4
Sevier	5	21	2	124	62.0	0.1
Summit	3	12	13	293	22.5	1.1
Utah	4	16	5	66	13.2	0.3
Wasatch	5	21	8	103	12.9	0.4
Weber	1	4	0	62	—	0.0
Rocky Mountain totals	31	128	64	1048	16.4	0.5
Daggett	2	8	0	148	—	0.0
Duchesne	3	12	7	202	28.9	0.6
Uintah	5	21	8	252	31.5	0.4
Uintah Basin totals	10	41	15	602	40.1	0.4
Carbon	3	12	5	99	19.8	0.4
Emery	5	21	4	186	46.5	0.2
Garfield	4	16	5	223	44.6	0.3
Grand	3	12	0	54	—	0.0
Kane	2	8	3	367	122.3	0.4
San Juan	4	16	5	70	14.0	0.3
Washington	3	12	1	70	70.0	0.1
Wayne	1	4	0	16	—	0.0
Colorado Plateau totals	25	103	23	1085	47.2	0.2
Unknown	4	16	2	169	84.5	0.1
Statewide totals*	74	305	143	4203	29.4	0.5

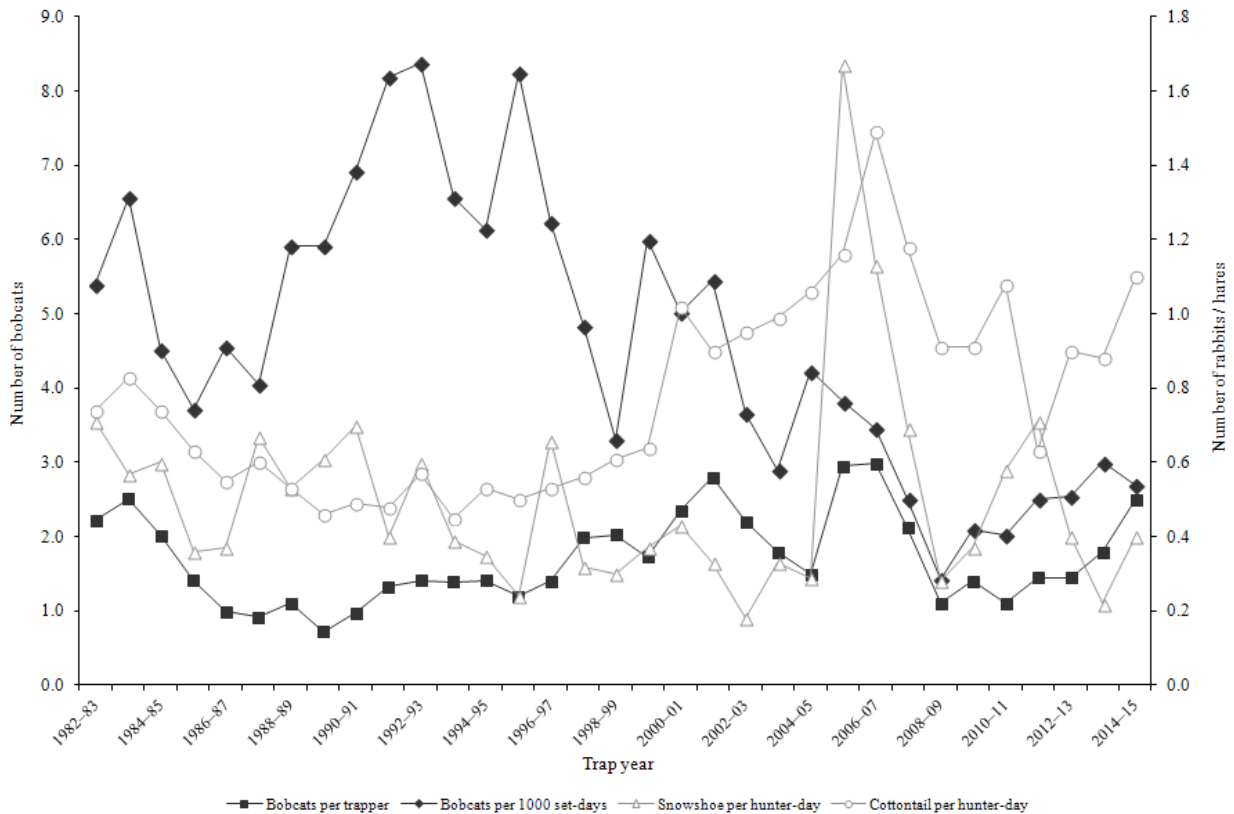
*Statewide totals for sample size and hunters afield are not totals of the columns because hunters hunted multiple counties.

**Total harvest numbers are from pelt check-in, while numbers of hunters afield and effort are determined from harvest survey.

Prey index

Lagomorph densities are generally considered to be a good indicator of bobcat recruitment and survival because high lagomorph populations provide an essential prey base for dispersing bobcats. When lagomorph populations are high or increasing, the bobcat population has also increased or at least remained stable. Thus, low populations of lagomorphs will reduce the likelihood of younger bobcats surviving to the next year. Cottontail rabbit and snowshoe hare data are taken from the Utah Upland Game Annual Report 2014–15 (2014–15 seasons).

Relationships in harvest statistics between bobcat and prey, Utah 1982–2015.



Population trends

Bobcat harvest age and sex ratios, Utah 1985–2015.

Trap year	Kittens / adult female	Kittens / adult	Male kittens / female kittens	Juveniles / adult	Juv. males / juv. females	Proportion juveniles in harvest	Proportion females in harvest	Males / females
1985–86	0.5	0.2	1.0	—	—	—	—	1.2
1986–87	0.7	0.3	0.9	—	—	—	—	1.1
1987–88	1.2	0.5	1.0	—	—	—	—	1.1
1988–89	1.1	0.4	1.1	—	—	—	—	1.3
1989–90	0.8	0.3	1.0	—	—	—	—	1.4
1990–91	0.8	0.3	0.6	—	—	—	—	1.2
1991–92	0.9	0.7	1.3	—	—	—	—	1.5
1992–93	0.9	1.0	1.2	—	—	—	—	1.4
1993–94	1.6	0.6	1.0	—	—	—	—	1.3
1994–95	0.6	0.6	1.1	0.6	1.1	0.36	0.44	1.3
1995–96	1.4	0.5	0.7	0.5	1.0	0.35	0.44	1.3
1996–97	1.9	0.7	1.1	0.7	1.1	0.41	0.41	1.4
1997–98	1.2	0.4	0.9	0.4	0.9	0.30	0.42	1.4
1998–99	2.1	0.8	1.1	—	—	—	—	1.3
1999–00	0.8	0.3	1.0	1.0	1.4	0.50	0.39	1.6
2000–01	0.7	0.3	1.1	0.9	1.3	0.47	0.39	1.6
2001–02	0.4	0.2	1.0	0.6	1.2	0.38	0.41	1.4
2002–03	0.4	0.2	0.9	0.4	1.0	0.28	0.45	1.2
2003–04	0.6	0.3	0.9	0.5	1.0	0.31	0.47	1.1
2004–05	0.8	0.3	0.8	1.2	1.1	0.55	0.44	1.3
2005–06	5.8	2.5	1.4	2.5	1.4	0.72	0.43	1.4
2006–07	4.1	1.5	1.4	1.5	1.4	0.60	0.43	1.3
2007–08	3.0	1.3	1.1	1.4	1.1	0.56	0.43	1.3
2008–09	0.4	0.2	0.8	0.7	1.0	0.42	0.45	1.2
2009–10	0.7	0.3	1.0	0.6	1.2	0.38	0.47	1.1
2010–11	0.6	0.2	1.1	0.5	1.2	0.31	0.43	1.4
2011–12	0.8	0.3	1.1	0.5	1.2	0.35	0.45	1.2
2012–13	0.6	0.3	0.9	0.5	0.9	0.35	0.48	1.1
2013–14	0.9	0.4	0.9	0.8	0.9	0.46	0.45	1.2
2014–15	1.6	0.8	1.0	1.5	1.2	0.60	0.45	1.2
Average	1.3	0.6	1.0	0.9	1.1	0.43	0.44	1.3

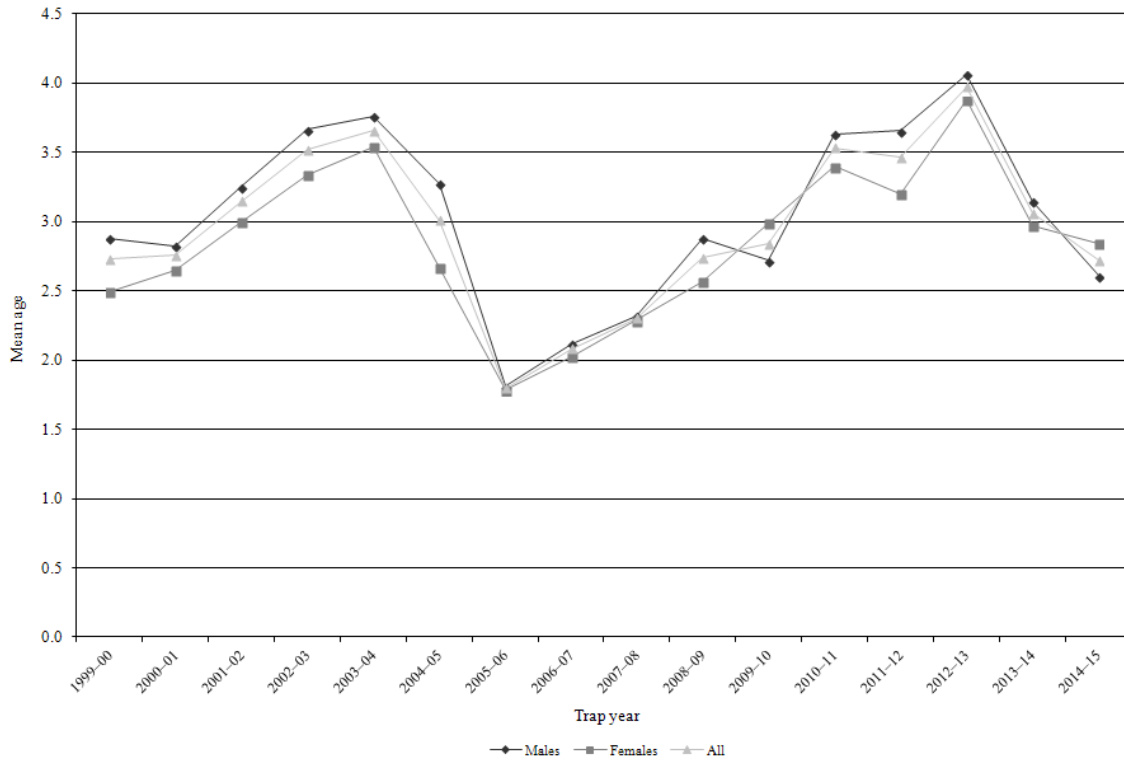
In annual reports prior to 2005–06, the "juvenile" age category referred only to kittens (age 0.5) while "adults" included all bobcats age 1.5 and older. Beginning with the 2005–06 annual report, the term "juvenile" now refers to kittens and yearlings (ages 0.5–1.5), while "adult" includes all bobcats age 2.5 and older.

Adult bobcat survival (from Chapman-Robson estimator), Utah 1985–2015.

Trap year	Survival (%)	95% confidence interval	Chi-square value, degrees of freedom
1985–86	63	60–65	13.2, 9df
1986–87	63	60–65	34.1, 9df
1987–88	65	61–68	19.9, 9df
1988–89	64	60–68	17.3, 8df
1989–90	67	63–71	19.4, 8df
1990–91	58	53–62	28.5, 12df
1991–92	58	55–60	47.9, 14df
1992–93	59	56–63	19.9, 12df
1993–94	54	52–57	34.2, 11df
1994–95	57	54–59	17.2, 14df
1995–96	64	61–66	40.0, 11df
1996–97	68	65–70	23.4, 12df
1997–98	71	69–74	19.1, 14df
1998–99	71	70–73	35.2, 13df
1999–00	66	64–68	41.0, 15df
2000–01	64	62–66	86.0, 11df
2001–02	65	63–67	87.3, 14df
2002–03	67	65–68	175.5, 13df
2003–04	71	70–72	245.6, 12df
2004–05	74	73–76	83.9, 15df
2005–06	68	65–70	15.7, 12df
2006–07	53	48–58	41.9, 9df
2007–08	58	54–62	63.6, 12df
2008–09	57	54–61	64.5, 14df
2009–10	59	56–62	60.1, 12df
2010–11	69	66–71	90.0, 13df
2011–12	70	66–73	22.7, 13df
2012–13	75	72–78	87.2, 11df
2013–14	70	66–74	52.8, 12df
2014–15	74	71–77	62.2, 13df
Average	65	—	—

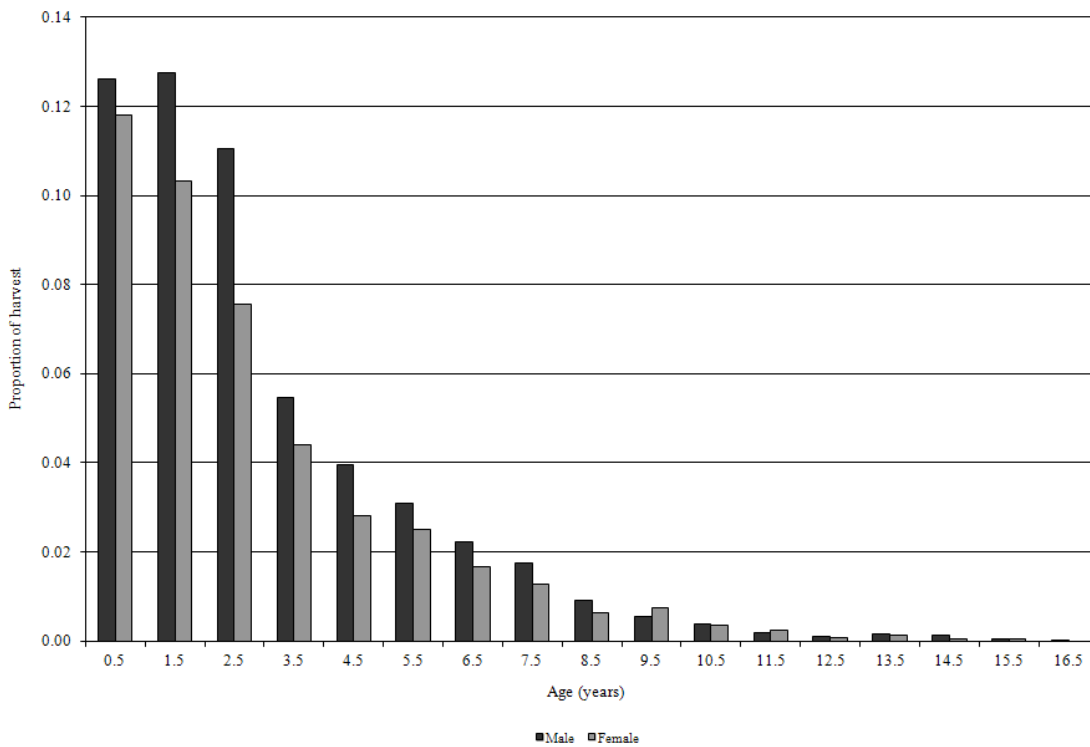
Age structure

Average age of harvested bobcats, Utah 1999–2015.

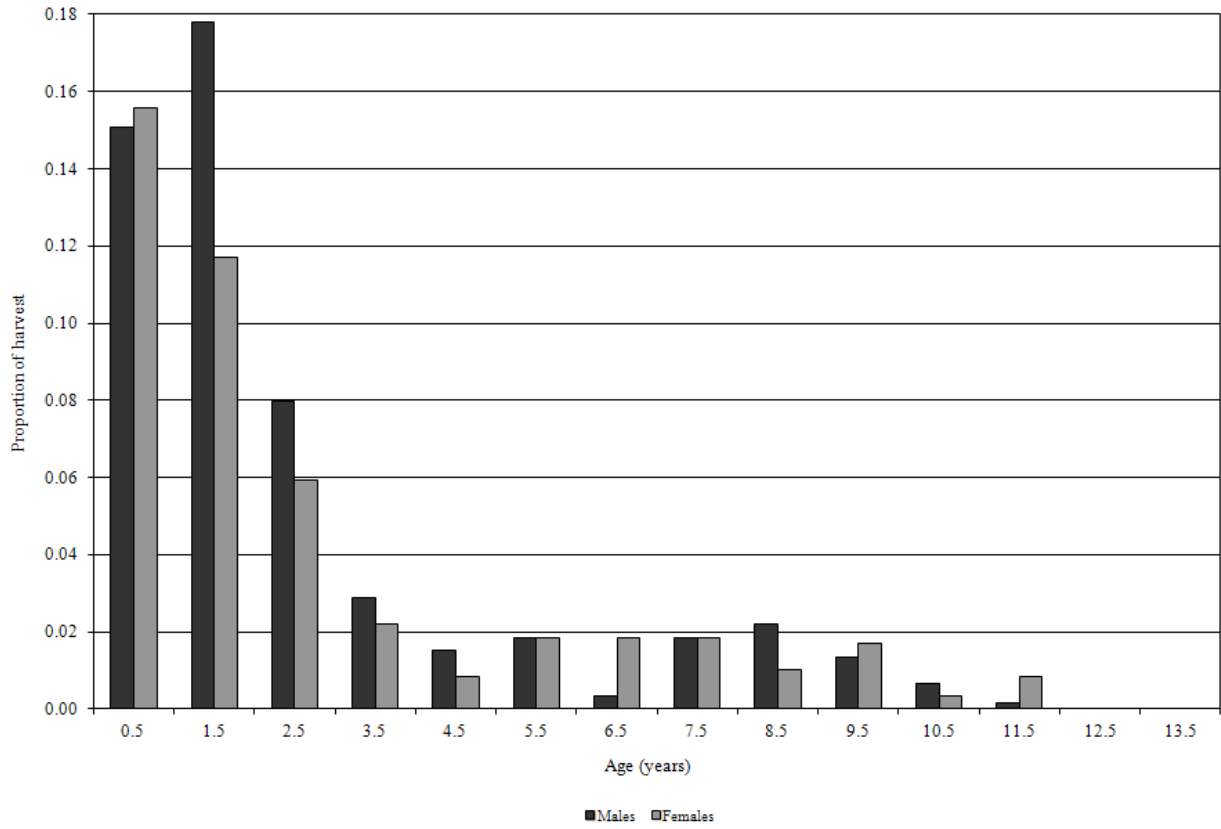


*Excludes age structure data from the 1998–99 trap season.

Average proportion of bobcats harvested by age category, Utah 2005–2015.



Age structure of harvested bobcats, Utah 2014–15.



COYOTE

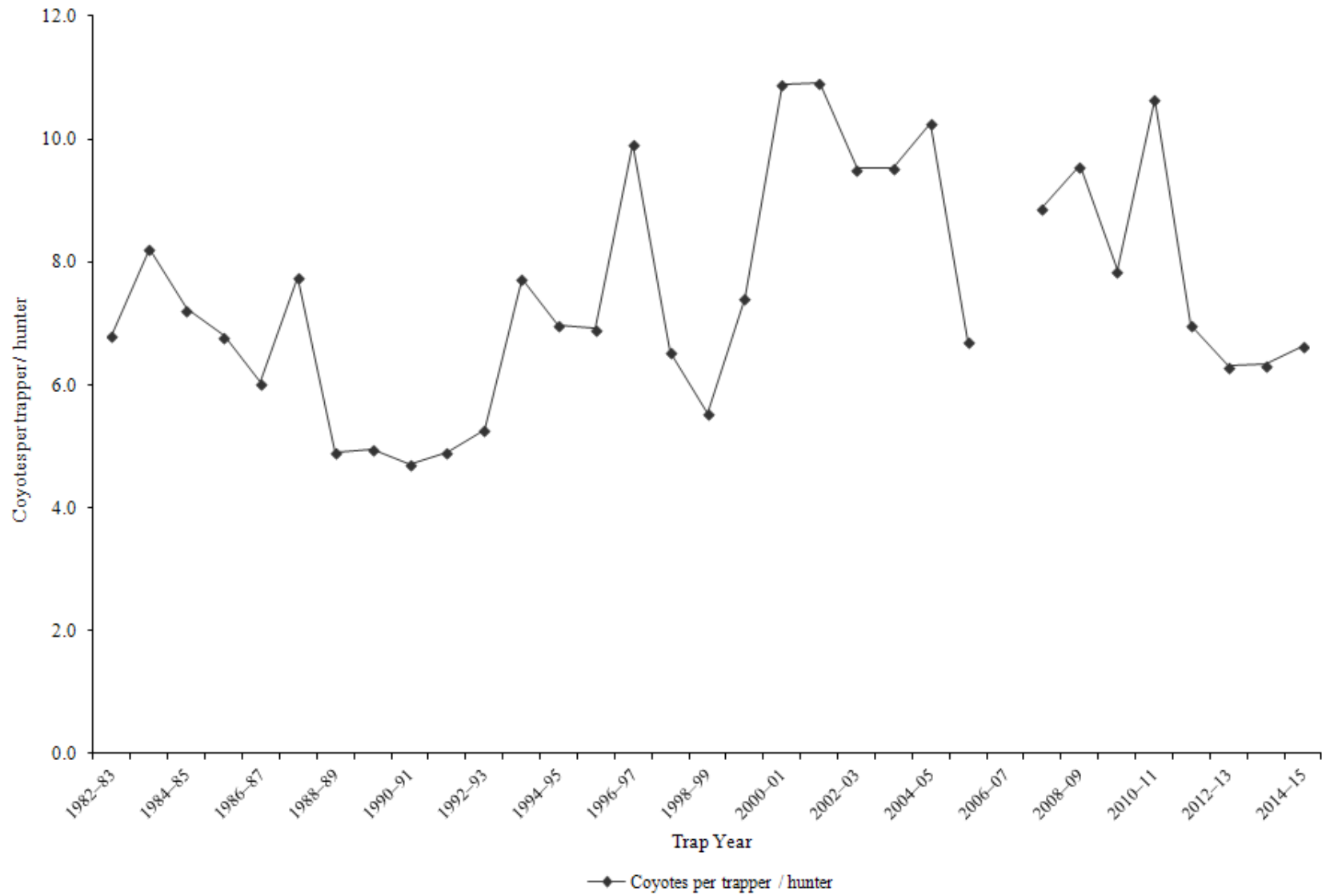
Statewide coyote harvest statistics, Utah 1982–2015.

Trap year	Trappers / hunters afield	Wildlife Services harvest	Incidental harvest	Trap harvest	Hunt harvest	Coyotes per trapper / hunter*	Pelt price (\$)
1982–83	841	4130	—	5738	—	6.8	35.42
1983–84	715	5063	—	5878	—	8.2	25.92
1984–85	828	5427	—	5991	—	7.2	32.35
1985–86	714	5045	—	4851	—	6.8	19.65
1986–87	819	4116	—	4947	—	6.0	33.64
1987–88	893	4338	—	6919	—	7.7	15.55
1988–89	652	4853	—	3200	—	4.9	8.47
1989–90	671	5168	—	3331	—	5.0	8.68
1990–91	389	4444	—	1831	—	4.7	11.41
1991–92	664	4347	—	3255	—	4.9	20.00
1992–93	695	4932	—	3666	—	5.3	15.75
1993–94	679	5827	—	5247	—	7.7	24.58
1994–95	754	3893	—	5267	—	7.0	12.51
1995–96	632	4165	—	4372	—	6.9	15.49
1996–97	405	4484	—	4017	—	9.9	18.73
1997–98	494	4169	—	3228	—	6.5	10.80
1998–99	782	3464	—	4337	—	5.5	10.80
1999–00	473	4534	—	3510	—	7.4	19.14
2000–01	456	4275	—	4966	—	10.9	14.39
2001–02	399	3874	—	4354	—	10.9	16.17
2002–03	572	3394	—	5446	—	9.5	32.62
2003–04	699	3897	—	6660	—	9.5	25.74
2004–05	699	4125	—	7173	—	10.3	20.10
2005–06	630	4820	328	1190	3039	6.7	30.45
2006–07	830	5041	—	—	—	—	26.37
2007–08	859	5618	821	4055	3582	8.9	21.74
2008–09	726	3909	1020	3963	2982	9.6	10.86
2009–10	781	3808	531	3188	2955	7.9	14.80
2010–11	736	4081	292	4356	3480	10.6	25.00
2011–12	705	3444	374	3054	1868	7.0	43.43
2012–13	881	3349	192	3269	2288	6.3	39.56
2013–14	864	2605	312	3162	2310	6.3	37.39
2014–15	971	3099	424	4118	2331	6.6	45.88
Average	694	4295	477	4329	2759	7.5	22.53

Prior to the 2005–06 season, harvest by hunting and trapping were not collected separately and trap harvest estimates included all harvest by both hunting and trapping.

*Coyotes per trapper / hunter does not include Wildlife Services harvest.

Statewide coyote harvest trends, Utah 1982–2015.



Coyote trapping harvest statistics by county and ecoregion, Utah 2014–15.

County	n	Trappers afield	Trap harvest	Traps set	Trapping days	Set-days	Set-days / coyote	Coyotes / 1000 set-days	Coyotes / trapper
Beaver	17	54	522	648	3154	43228	82.8	12.1	9.7
Box Elder	10	32	278	468	1025	22279	80.0	12.5	8.8
Iron	15	47	376	658	2837	52807	140.3	7.1	7.9
Juab	9	28	76	139	1294	8775	115.6	8.7	2.7
Millard	13	41	158	639	1882	34415	217.6	4.6	3.8
Tooele	16	51	304	690	2078	42087	138.6	7.2	6.0
Great Basin totals	80	253	1714	3242	12270	203591	118.8	8.4	6.8
Cache	6	19	35	202	617	7010	201.5	5.0	1.8
Davis	1	3	3	38	171	2050	648.0	1.5	1.0
Morgan	4	13	13	76	361	1974	156.0	6.4	1.0
Piute	3	9	47	111	376	6358	134.0	7.5	5.0
Rich	6	19	389	452	1392	38894	100.0	10.0	20.5
Salt Lake	3	9	16	111	155	1120	70.8	14.1	1.7
Sanpete	10	32	54	263	1572	15424	286.8	3.5	1.7
Sevier	8	25	57	202	637	4873	85.6	11.7	2.3
Summit	3	9	41	218	383	15474	376.3	2.7	4.3
Utah	13	41	60	414	1304	16520	274.9	3.6	1.5
Wasatch	4	13	35	168	484	11688	335.9	3.0	2.8
Weber	2	6	6	35	237	1329	210.0	4.8	1.0
Rocky Mountain totals	63	199	756	2290	7689	122712	162.3	6.2	3.8
Daggett	3	9	111	177	664	11577	104.6	9.6	11.7
Duchesne	14	44	158	712	3132	60108	380.0	2.6	3.6
Uintah	26	82	313	1433	5523	98898	315.8	3.2	3.8
Uintah Basin totals	43	136	582	2322	9320	170583	293.1	3.4	4.3
Carbon	6	19	16	275	668	17907	1132.2	0.9	0.8
Emery	6	19	28	237	854	8161	286.7	3.5	1.5
Garfield	14	44	351	462	2104	43601	124.2	8.1	7.9
Grand	4	13	142	202	699	14171	99.6	10.0	11.3
Kane	9	28	38	294	1039	15093	397.6	2.5	1.3
San Juan	10	32	164	337	636	9996	60.8	16.5	5.2
Washington	14	44	111	527	1668	24013	216.9	4.6	2.5
Wayne	8	25	120	471	1181	22943	190.9	5.2	4.8
Colorado Plateau totals	71	225	970	2807	8851	155884	160.5	6.2	4.3
Unknown	4	13	95	282	383	16617	175.1	5.7	7.5
Statewide totals*	214	677	4118	10942	38512	669388	162.5	6.2	6.1

*Statewide totals for sample size and trappers afield are not totals of the columns because trappers trapped multiple counties.

Coyote hunting harvest statistics by county and ecoregion, Utah 2014–15.

County	n	Hunters afield	Hunt harvest	Hunter-days afield	Hunter-days / coyote	Coyotes / hunter
Beaver	11	35	199	319	1.6	5.7
Box Elder	18	57	187	414	2.2	3.3
Iron	5	16	35	386	11.1	2.2
Juab	11	35	111	206	1.9	3.2
Millard	16	51	101	655	6.5	2.0
Tooele	17	54	177	788	4.4	3.3
Great Basin totals	78	247	810	2768	3.4	3.3
Cache	9	28	28	215	7.6	1.0
Davis	0	0	—	—	—	—
Morgan	5	16	51	130	2.6	3.2
Piute	6	19	82	196	2.4	4.3
Rich	7	22	44	392	8.9	2.0
Salt Lake	1	3	13	16	1.3	4.0
Sanpete	10	32	199	740	3.7	6.3
Sevier	9	28	60	253	4.2	2.1
Summit	11	35	142	860	6.0	4.1
Utah	12	38	70	175	2.5	1.8
Wasatch	5	16	25	116	4.6	1.6
Weber	1	3	6	63	10.0	2.0
Rocky Mountain totals	76	240	721	3157	4.4	3.0
Daggett	4	13	19	164	8.7	1.5
Duchesne	7	22	60	237	3.9	2.7
Uintah	14	44	89	1449	16.4	2.0
Uintah Basin totals	25	79	168	1850	11.0	2.1
Carbon	5	16	13	1218	96.3	0.8
Emery	9	28	44	1325	29.9	1.6
Garfield	8	25	117	389	3.3	4.6
Grand	5	16	130	111	0.9	8.2
Kane	6	19	57	319	5.6	3.0
San Juan	8	25	85	1446	16.9	3.4
Washington	4	13	6	25	4.0	0.5
Wayne	7	22	66	177	2.7	3.0
Colorado Plateau totals	52	164	519	5010	9.7	3.2
Unknown	6	19	114	169	1.5	6.0
Statewide totals*	157	497	2331	12955	5.6	4.7

*Statewide totals for sample size and hunters afield are not totals of the columns because hunters hunted multiple counties.

GRAY FOX

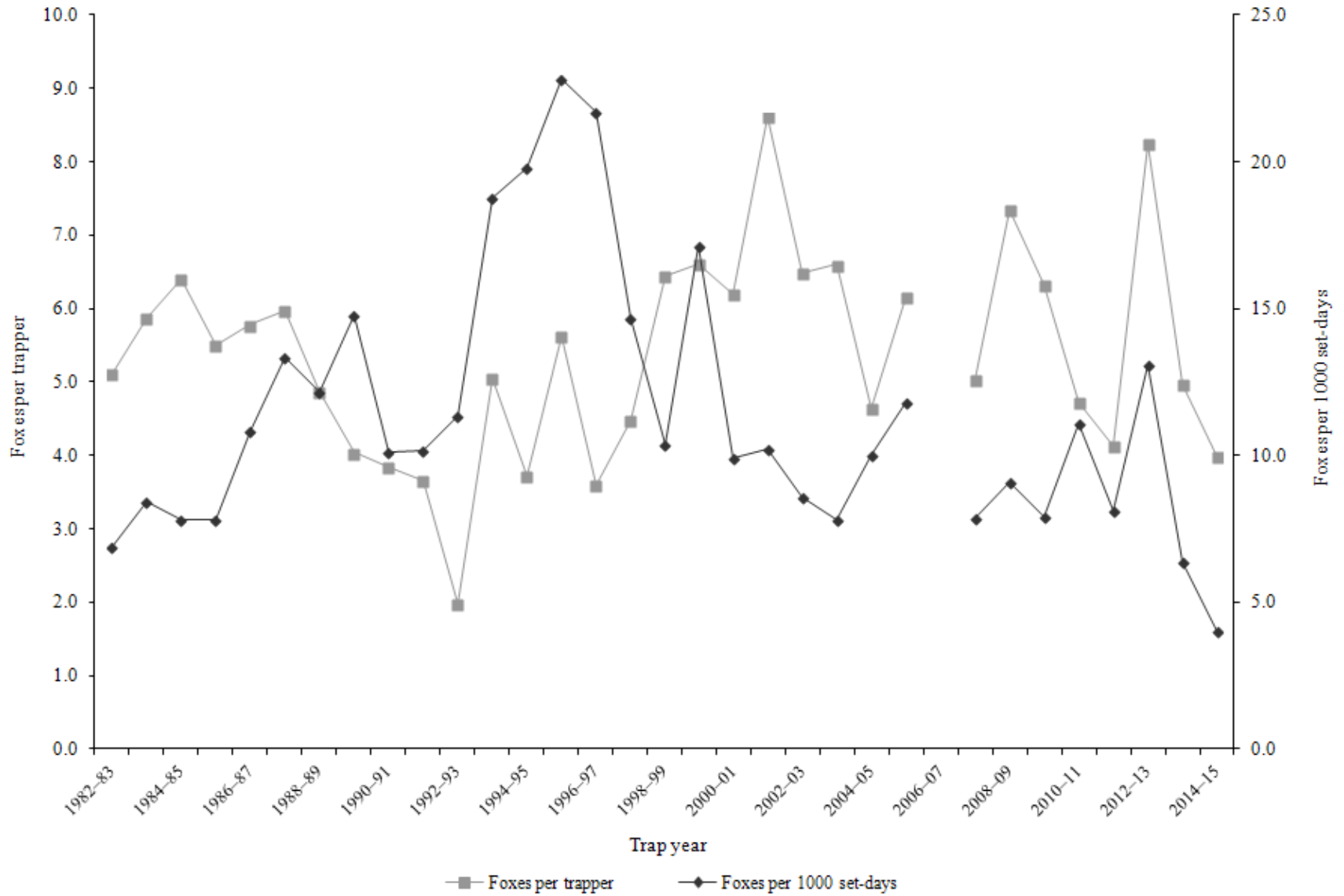
Statewide gray fox harvest statistics*, Utah 1982–2015.

Trap year	Trappers afield	Incidental harvest	Trap harvest	Hunt harvest	Set-days / fox	Foxes / 1000 set-days	Foxes / trapper	Pelt price (\$)
1982–83	263	—	1346	—	145	6.9	5.1	27.75
1983–84	233	—	1367	—	119	8.4	5.9	25.13
1984–85	305	—	1954	—	128	7.8	6.4	24.64
1985–86	256	—	1407	—	128	7.8	5.5	15.03
1986–87	252	—	1457	—	92	10.8	5.8	25.29
1987–88	273	—	1633	—	75	13.4	6.0	21.91
1988–89	226	—	1099	—	82	12.2	4.9	13.50
1989–90	233	—	941	—	68	14.8	4.0	6.19
1990–91	65	—	250	—	99	10.1	3.8	8.24
1991–92	110	—	402	—	98	10.2	3.7	6.87
1992–93	214	—	422	—	88	11.4	2.0	7.08
1993–94	136	—	687	—	53	18.8	5.1	12.00
1994–95	207	—	771	—	51	19.8	3.7	9.62
1995–96	147	—	828	—	44	22.8	5.6	10.65
1996–97	102	—	367	—	46	21.7	3.6	11.60
1997–98	87	—	389	—	68	14.7	4.5	7.76
1998–99	135	—	870	—	96	10.4	6.4	6.96
1999–00	140	—	925	—	58	17.1	6.6	6.62
2000–01	187	—	1159	—	101	9.9	6.2	8.00
2001–02	154	—	1326	—	98	10.2	8.6	11.58
2002–03	299	—	1942	—	116	8.6	6.5	12.47
2003–04	265	—	1749	—	128	7.8	6.6	10.84
2004–05	203	—	942	—	100	10.0	4.6	13.81
2005–06	98	—	603	—	85	11.8	6.2	24.15
2006–07	252	—	—	—	—	—	—	37.25
2007–08	217	—	1093	—	127	7.9	5.0	39.19
2008–09	238	—	1747	—	110	9.1	7.3	17.07
2009–10	163	361	1031	—	126	7.9	6.3	16.56
2010–11	138	292	651	—	90	11.1	4.7	20.97
2011–12	125	485	474	43	124	8.1	4.1	23.13
2012–13	130	216	1069	3	77	13.1	8.2	31.15
2013–14	172	462	843	13	155	6.4	5.0	24.18
2014–15	123	525	490	0	249	4.0	4.0	16.16
Average	186	390	1007	15	101	11.4	5.4	16.77

Prior to the 2005–06 season, harvest by hunting and trapping were not collected separately and trapping harvest estimates included harvest by both hunters and trappers. Trap harvest includes incidental harvest.

*Trappers and foxes per trapper include hunters and their harvest. Set-days per fox and foxes per 1000 set-days are based only on trapping activity, and do not include hunt harvest or hunter-days afield.

Statewide gray fox harvest trends, Utah 1982–2015.



Gray fox trapping harvest statistics by county and ecoregion, Utah 2014–15.

County	n	Trappers afield	Trap harvest	Traps set	Trapping days	Set-days	Set-days / fox	Foxes / 1000 set-days	Foxes / trapper
Beaver	6	19	41	247	1000	17284	420.3	2.4	2.2
Box Elder	0	0	—	—	—	—	—	—	—
Iron	6	19	57	244	867	13836	243.0	4.1	3.0
Juab	0	0	—	—	—	—	—	—	—
Millard	0	0	—	—	—	—	—	—	—
Tooele	0	0	—	—	—	—	—	—	—
Great Basin totals	12	38	98	490	1866	31119	317.4	3.2	2.6
Cache	0	0	—	—	—	—	—	—	—
Davis	0	0	—	—	—	—	—	—	—
Morgan	0	0	—	—	—	—	—	—	—
Piute	1	3	0	16	278	1392	—	0.0	0.0
Rich	0	0	—	—	—	—	—	—	—
Salt Lake	0	0	—	—	—	—	—	—	—
Sanpete	0	0	—	—	—	—	—	—	—
Sevier	0	0	—	—	—	—	—	—	—
Summit	0	0	—	—	—	—	—	—	—
Utah	0	0	—	—	—	—	—	—	—
Wasatch	0	0	—	—	—	—	—	—	—
Weber	0	0	—	—	—	—	—	—	—
Rocky Mountain totals	1	3	0	16	278	1392	—	0.0	0.0
Daggett	0	0	—	—	—	—	—	—	—
Duchesne	0	0	—	—	—	—	—	—	—
Uintah	4	13	76	301	721	24657	324.8	3.1	6.0
Uintah Basin totals	4	13	76	301	721	24657	324.8	3.1	6.0
Carbon	1	3	6	38	278	3340	528.0	1.9	2.0
Emery	0	0	—	—	—	—	—	—	—
Garfield	6	19	98	452	560	28285	288.5	3.5	5.2
Grand	0	0	—	—	—	—	—	—	—
Kane	4	13	41	155	731	9107	221.5	4.5	3.3
San Juan	2	6	3	35	95	920	291.0	3.4	0.5
Washington	7	22	101	294	690	9875	97.6	10.2	4.6
Wayne	4	13	66	234	800	13241	199.3	5.0	5.3
Colorado Plateau totals	24	76	315	1208	3154	64769	204.8	4.9	4.2
Unknown	0	0	—	—	—	—	—	—	—
Statewide totals*	37	117	490	2015	6020	121937	248.7	4.0	4.2

*Statewide totals for sample size and trappers afield are not totals of the columns because trappers trapped multiple counties.

KIT FOX

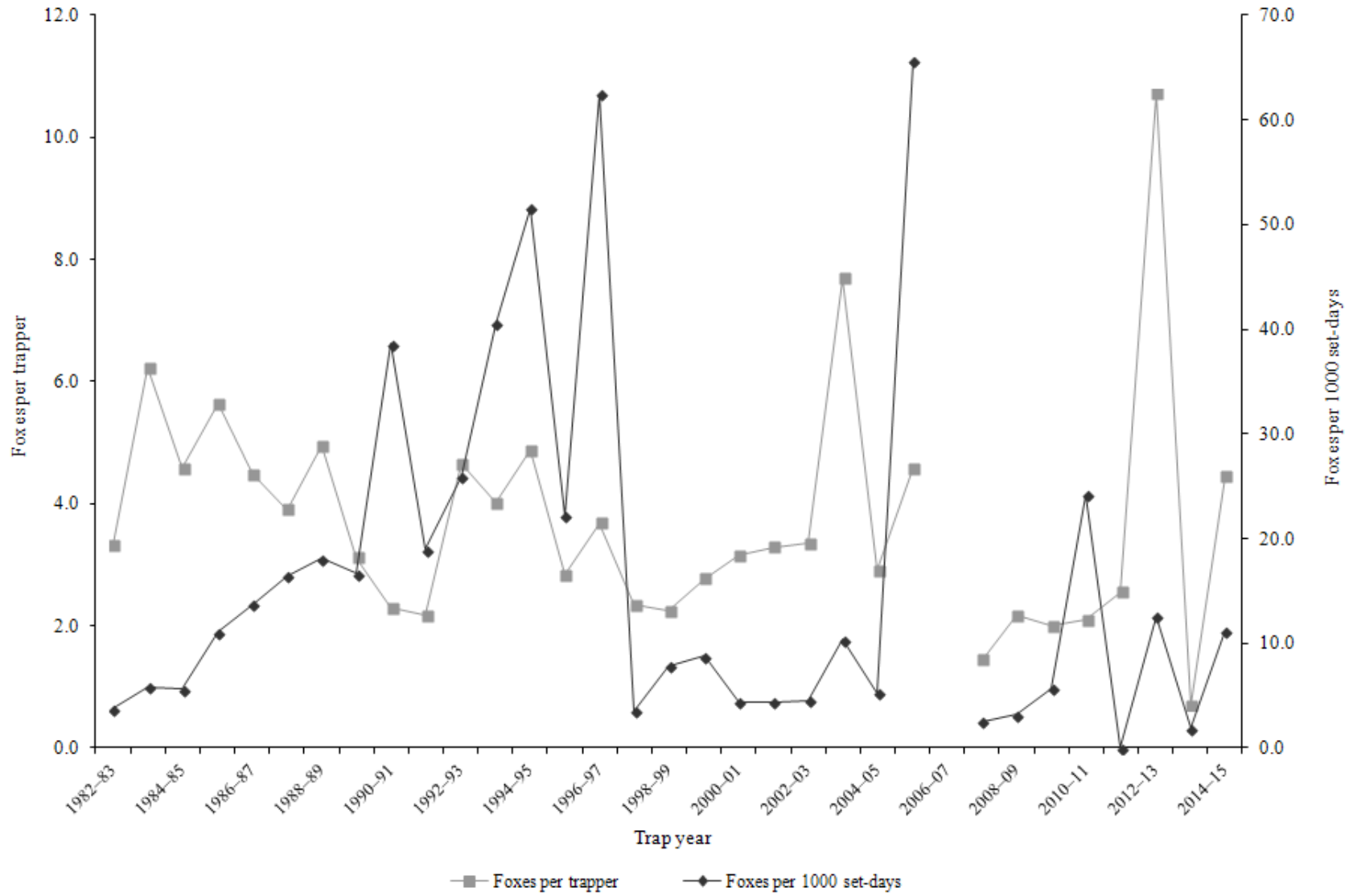
Statewide kit fox harvest statistics*, Utah 1982–2015.

Trap year	Trappers afield	Incidental harvest	Trap harvest	Hunt harvest	Set-days / fox	Foxes / 1000 set-days	Foxes / trapper	Pelt price (\$)
1982–83	109	—	363	—	267	3.7	3.3	11.39
1983–84	112	—	698	—	171	5.8	6.2	11.99
1984–85	142	—	651	—	178	5.6	4.6	11.17
1985–86	108	—	609	—	90	11.1	5.6	7.50
1986–87	122	—	547	—	73	13.7	4.5	9.90
1987–88	138	—	538	—	61	16.5	3.9	10.69
1988–89	130	—	643	—	55	18.1	4.9	6.98
1989–90	117	—	365	—	60	16.6	3.1	3.19
1990–91	81	—	186	—	26	38.6	2.3	4.67
1991–92	86	—	187	—	53	18.9	2.2	2.78
1992–93	41	—	191	—	39	25.9	4.7	4.30
1993–94	75	—	301	—	25	40.6	4.0	4.69
1994–95	109	—	531	—	19	51.6	4.9	6.45
1995–96	77	—	218	—	45	22.2	2.8	6.25
1996–97	44	—	162	—	16	62.5	3.7	6.77
1997–98	41	—	96	—	282	3.5	2.3	3.50
1998–99	75	—	168	—	128	7.8	2.2	7.31
1999–00	66	—	183	—	114	8.8	2.8	2.90
2000–01	51	—	161	—	227	4.4	3.2	6.13
2001–02	52	—	171	—	229	4.4	3.3	10.72
2002–03	90	—	302	—	221	4.5	3.4	5.44
2003–04	83	—	638	—	97	10.4	7.7	5.38
2004–05	89	—	259	—	191	5.2	2.9	8.98
2005–06	40	—	183	—	15	65.6	4.6	10.92
2006–07	65	—	—	—	—	—	—	10.50
2007–08	27	—	39	—	392	2.6	1.4	7.87
2008–09	48	—	104	—	314	3.2	2.2	7.61
2009–10	19	13	38	—	177	5.6	2.0	9.47
2010–11	20	3	42	—	41	24.2	2.1	12.68
2011–12	18	64	0	46	—	0.0	2.6	14.49
2012–13	31	41	315	17	80	12.6	10.7	14.37
2013–14	10	7	7	0	515	1.9	0.7	14.32
2014–15	22	47	95	3	90	11.2	4.5	7.13
Average	71	29	281	17	138	16.5	3.7	8.13

Prior to the 2005–06 season, harvest by hunting and trapping were not collected separately and trapping harvest estimates included harvest by both hunters and trappers. Trap harvest includes incidental harvest.

*Trappers and foxes per trapper include hunters and their harvest. Set-days per fox and foxes per 1000 set-days are based only on trapping activity, and do not include hunt harvest or hunter-days afield.

Statewide kit fox harvest trends, Utah 1982–2015.



MARTEN

Statewide marten harvest statistics, Utah 1982–1999.

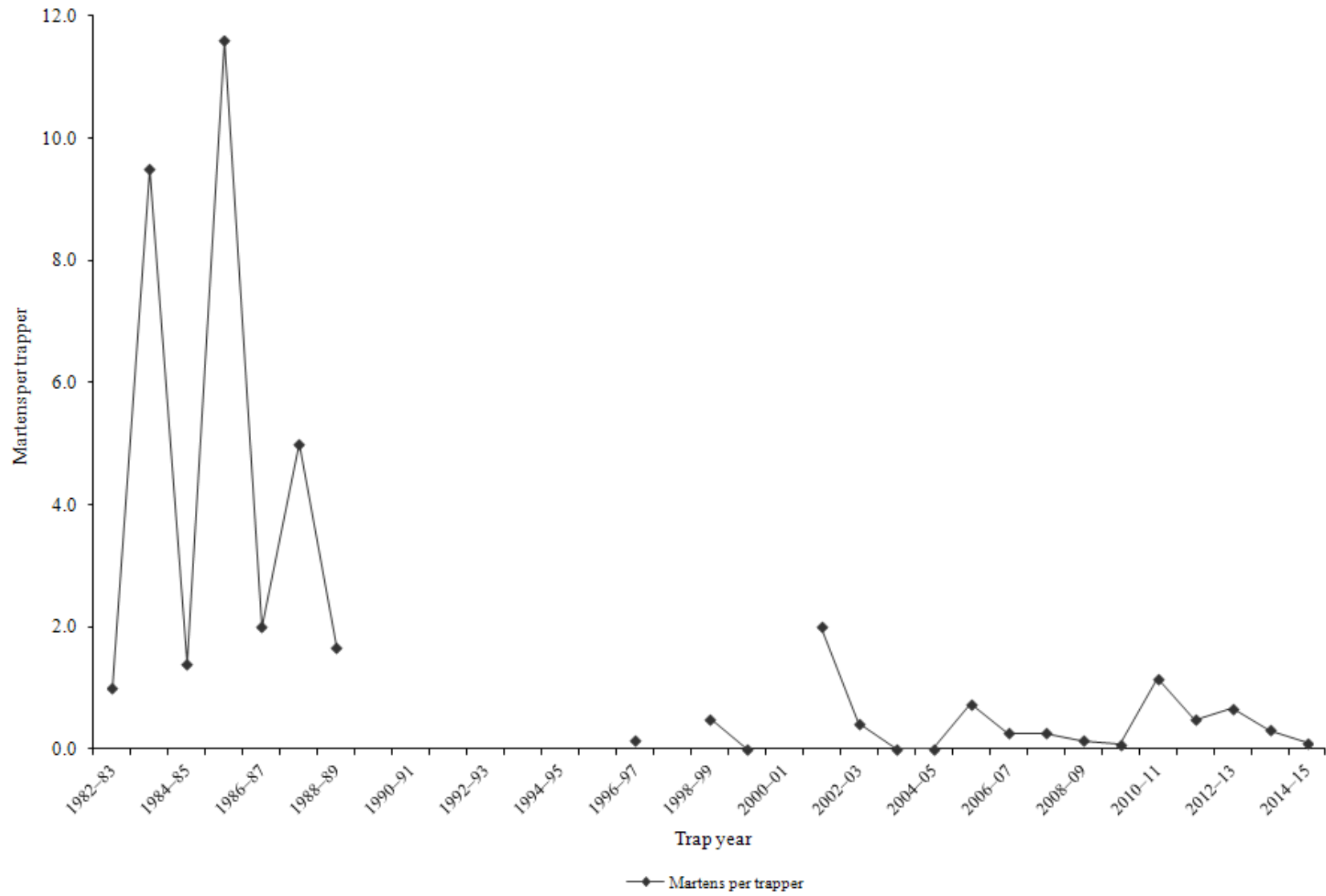
Trap year	Trappers afield	Trap / hunt harvest	Set-days	Set-days / marten	Martens / 1000 set-days	Martens / trapper	Pelt price (\$)
1982–83	1	1	6	6	166.7	1.0	10.00
1983–84	9	84	4704	56	17.9	9.5	20.00
1984–85	9	12	6516	543	1.8	1.4	24.00
1985–86	10	121	7381	61	16.4	11.6	23.00
1986–87	11	22	8558	389	2.6	2.0	25.68
1987–88	10	50	9750	195	5.1	5.0	40.00
1988–89	6	10	1210	121	8.3	1.7	31.00
1989–90	—	—	—	—	—	—	—
1990–91	—	—	—	—	—	—	—
1991–92	—	—	—	—	—	—	—
1992–93	—	—	—	—	—	—	—
1993–94	—	—	—	—	—	—	—
1994–95	—	—	—	—	—	—	—
1995–96	—	—	—	—	—	—	—
1996–97	13	2	—	—	—	0.2	20.00
1997–98	—	—	—	—	—	—	11.00
1998–99	12	6	1228	205	4.9	0.5	7.11
Average	9	34	4919	197	28.0	3.6	21.18

Statewide marten harvest statistics, Utah 1999–2015.

Trap year	Permits sold	Successful trappers	Male harvest	Female harvest	Unknown harvest	Total harvest	Success rate (%)*	Martens / trapper*
1999–00	5	0	0	0	0	0	0.0	0.0
2000–01	—	1	3	3	0	6	—	—
2001–02	11	2	16	6	0	22	18.2	2.0
2002–03	12	1	3	2	0	5	8.3	0.4
2003–04	18	0	0	0	0	0	0.0	0.0
2004–05	12	0	0	0	0	0	0.0	0.0
2005–06	16	2	7	4	1	12	12.5	0.8
2006–07	26	3	6	1	0	7	11.5	0.3
2007–08	22	4	7	14	0	21	18.2	1.0
2008–09	28	1	2	2	0	4	3.6	0.1
2009–10	25	1	2	0	0	2	4.0	0.1
2010–11	31	2	24	12	0	36	6.5	1.2
2011–12	29	3	7	3	4	14	10.3	0.5
2012–13	39	3	15	5	6	26	7.7	0.7
2013–14	51	6	13	3	0	16	11.8	0.3
2014–15	202	2	16	6	0	22	1.0	0.1
Average	35	2	8	3	1	12	7.6	0.5

*Assumption: Every person who possessed a marten permit trapped or hunted.

Statewide marten harvest trends, Utah 1982–2015.



MINK

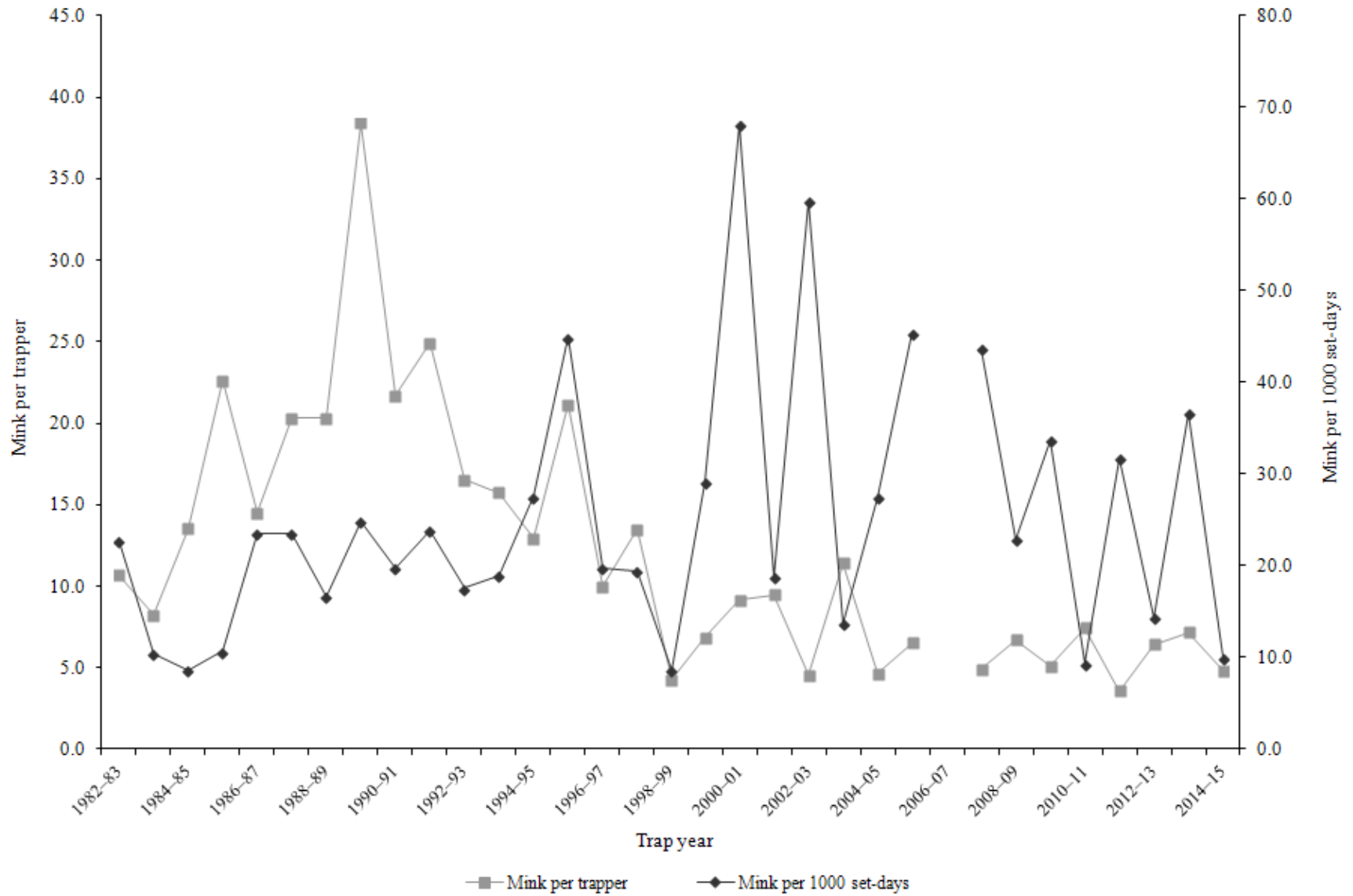
Statewide mink harvest statistics*, Utah 1982–2015.

Trap year	Trappers afield	Incidental harvest	Trap harvest	Hunt harvest	Set-days / mink	Minks / 1000 set-days	Minks / trapper	Pelt price (\$)
1982–83	38	—	405	—	44	22.7	10.7	10.85
1983–84	46	—	379	—	95	10.5	8.2	9.13
1984–85	40	—	542	—	117	8.6	13.6	10.27
1985–86	37	—	837	—	94	10.7	22.6	6.00
1986–87	57	—	828	—	42	23.6	14.5	10.63
1987–88	51	—	1037	—	42	23.6	20.3	12.25
1988–89	42	—	854	—	60	16.6	20.3	10.69
1989–90	29	—	1114	—	40	24.8	38.4	6.30
1990–91	25	—	543	—	50	19.8	21.7	6.33
1991–92	29	—	723	—	42	23.9	24.9	6.81
1992–93	23	—	380	—	57	17.6	16.5	7.50
1993–94	30	—	472	—	53	18.9	15.7	8.41
1994–95	27	—	350	—	36	27.6	13.0	8.38
1995–96	25	—	529	—	22	45.0	21.2	10.40
1996–97	27	—	269	—	50	19.8	10.0	10.95
1997–98	25	—	337	—	51	19.4	13.5	5.81
1998–99	81	—	345	—	116	8.6	4.3	7.11
1999–00	61	—	419	—	34	29.1	6.9	6.07
2000–01	51	—	468	—	15	68.1	9.2	4.92
2001–02	30	—	284	—	53	18.8	9.5	5.20
2002–03	59	—	268	—	17	59.8	4.5	2.07
2003–04	59	—	673	—	73	13.7	11.4	8.00
2004–05	68	—	317	—	36	27.5	4.7	8.98
2005–06	34	—	222	—	22	45.4	6.5	9.97
2006–07	65	—	—	—	—	—	—	7.94
2007–08	38	—	186	—	23	43.7	4.9	9.33
2008–09	36	—	242	—	44	22.9	6.7	5.96
2009–10	66	57	338	—	30	33.7	5.1	8.00
2010–11	65	151	485	—	107	9.4	7.5	11.27
2011–12	43	61	153	7	31	31.8	3.6	15.08
2012–13	110	147	706	14	70	14.4	6.4	19.18
2013–14	115	186	826	0	27	36.6	7.2	16.21
2014–15	54	82	259	0	100	10.0	4.8	8.57
Average	48	114	493	5	53	25.2	12.1	8.93

Prior to the 2005–06 season, harvest by hunting and trapping were not collected separately and trapping harvest estimates included harvest by both hunters and trappers. Trap harvest includes incidental harvest.

*Trappers and minks per trapper include hunters and their harvest. Set-days per mink and minks per 1000 set-days are based only on trapping activity, and do not include hunt harvest or hunter-days afield.

Statewide mink harvest trends, Utah 1982–2015.



MUSKRAT

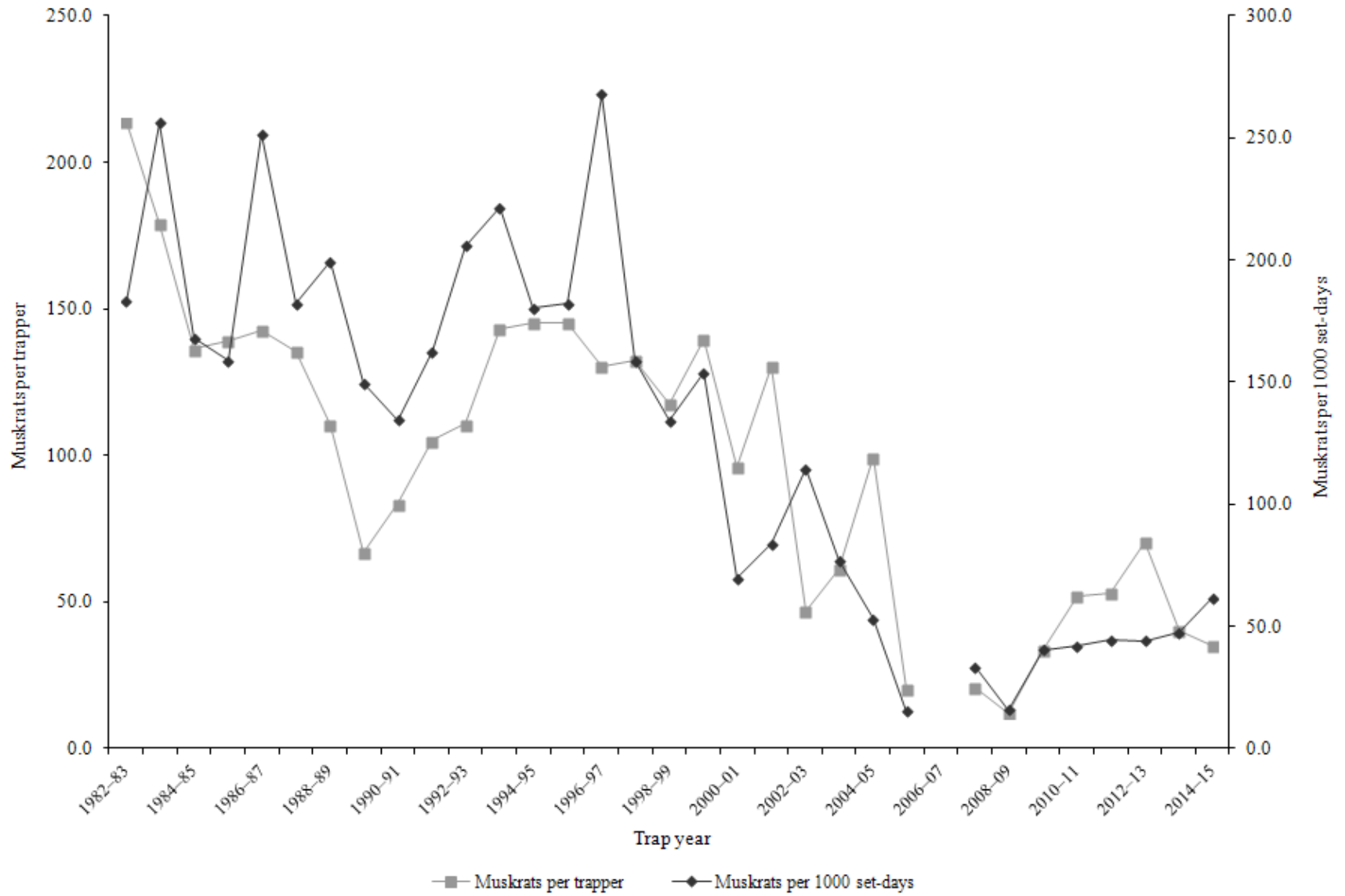
Statewide muskrat harvest statistics*, Utah 1982–2015.

Trap year	Trappers afield	Incidental harvest	Trap harvest	Hunt harvest	Set-days / muskrat	Musk rats / 1000 set-days	Musk rats / trapper	Pelt price (\$)
1982–83	258	—	55137	—	5	183.1	213.7	2.16
1983–84	309	—	55298	—	4	256.2	179.0	2.46
1984–85	400	—	54526	—	6	168.1	136.3	2.45
1985–86	282	—	39195	—	6	158.9	139.0	1.86
1986–87	416	—	59368	—	4	251.7	142.7	2.66
1987–88	432	—	58560	—	5	182.2	135.6	2.46
1988–89	303	—	33400	—	5	199.4	110.2	1.40
1989–90	253	—	16898	—	7	149.6	66.8	0.89
1990–91	85	—	7102	—	7	134.6	83.6	0.91
1991–92	186	—	19547	—	6	162.7	105.1	1.60
1992–93	105	—	11623	—	5	205.9	110.7	1.18
1993–94	157	—	22488	—	5	221.5	143.2	1.89
1994–95	195	—	28369	—	6	180.5	145.5	1.74
1995–96	181	—	26260	—	5	182.2	145.1	2.09
1996–97	179	—	23371	—	4	267.9	130.6	3.59
1997–98	203	—	26907	—	6	158.7	132.5	2.01
1998–99	186	—	21895	—	7	134.1	117.7	1.73
1999–00	151	—	21086	—	7	153.7	139.6	1.00
2000–01	108	—	10376	—	14	69.8	96.1	1.58
2001–02	115	—	14979	—	12	84.0	130.3	2.60
2002–03	135	—	6334	—	9	114.6	46.9	1.59
2003–04	176	—	10777	—	13	77.0	61.2	1.57
2004–05	151	—	15016	—	19	53.1	99.4	1.57
2005–06	41	0	824	—	66	15.3	20.1	3.97
2006–07	81	—	—	—	—	—	—	3.31
2007–08	80	110	1665	—	30	33.3	20.9	3.04
2008–09	98	137	1198	—	63	15.9	12.2	2.49
2009–10	158	164	5341	—	25	40.5	33.8	4.93
2010–11	141	337	7361	—	24	42.2	52.2	5.40
2011–12	150	281	7985	—	23	44.4	53.2	7.28
2012–13	192	117	13534	3	23	44.2	70.5	8.11
2013–14	213	159	8605	0	21	47.5	40.4	8.73
2014–15	168	180	5902	9	16	61.8	35.1	3.76
Average	191	165	21591	4	14	128.0	98.4	2.85

Prior to the 2005–06 season, harvest by hunting and trapping were not collected separately and trapping harvest estimates included harvest by both hunters and trappers. Trap harvest includes incidental harvest.

*Trappers and muskrat per trapper include hunters and their harvest. Set-days per muskrat and muskrat per 1000 set-days are based only on trapping activity, and do not include hunt harvest or hunter-days afield.

Statewide muskrat harvest trends, Utah 1982–2015.



Muskrat harvest statistics by county and ecoregion, Utah 2014–15.

County	n	Trappers afield	Trap harvest	Traps set	Trapping days	Set-days	Set-days / muskrat	Musk rats / 1000 set-days	Musk rats / trapper
Beaver	0	0	—	—	—	—	—	—	—
Box Elder	4	13	592	136	218	2455	4.1	241.0	46.8
Iron	0	0	—	—	—	—	—	—	—
Juab	1	3	47	19	190	1139	24.0	41.7	15.0
Millard	0	0	—	—	—	—	—	—	—
Tooele	1	3	6	6	44	89	14.0	71.4	2.0
Great Basin totals	6	19	645	161	452	3682	5.7	175.3	34.0
Cache	12	38	1623	1041	879	15164	9.3	107.0	42.8
Davis	0	0	—	—	—	—	—	—	—
Morgan	1	3	101	63	89	1771	17.5	57.1	32.0
Piute	1	3	158	95	95	2847	18.0	55.6	50.0
Rich	2	6	522	95	1439	17239	33.0	30.3	82.5
Salt Lake	3	9	282	171	234	7231	25.7	38.9	29.7
Sanpete	2	6	278	95	332	7117	25.6	39.1	44.0
Sevier	1	3	142	47	95	1423	10.0	100.0	45.0
Summit	2	6	120	63	111	1344	11.2	89.4	19.0
Utah	7	22	958	411	595	15734	16.4	60.9	43.3
Wasatch	4	13	161	104	139	1515	9.4	106.5	12.8
Weber	3	9	525	183	259	5048	9.6	104.0	55.3
Rocky Mountain totals	38	120	4870	2369	4267	76435	15.7	63.7	40.5
Daggett	1	3	6	9	22	66	10.5	95.2	2.0
Duchesne	0	0	—	—	—	—	—	—	—
Uintah	4	13	225	316	478	11255	50.1	20.0	17.8
Uintah Basin totals	5	16	231	326	500	11321	49.0	20.4	14.6
Carbon	1	3	6	19	142	854	135.0	7.4	2.0
Emery	0	0	—	—	—	—	—	—	—
Garfield	1	3	120	38	25	304	2.5	395.8	38.0
Grand	0	0	—	—	—	—	—	—	—
Kane	0	0	—	—	—	—	—	—	—
San Juan	0	0	—	—	—	—	—	—	—
Washington	0	0	—	—	—	—	—	—	—
Wayne	1	3	28	95	95	2847	100.0	10.0	9.0
Colorado Plateau totals	3	9	154	152	263	4005	25.8	38.7	16.3
Unknown	0	0	—	—	—	—	—	—	—
Statewide totals*	51	161	5902	3008	5482	95442	16.2	61.8	36.6

*Statewide totals for sample size and trappers afield are not totals of the columns because trappers trapped multiple counties.

RACCOON

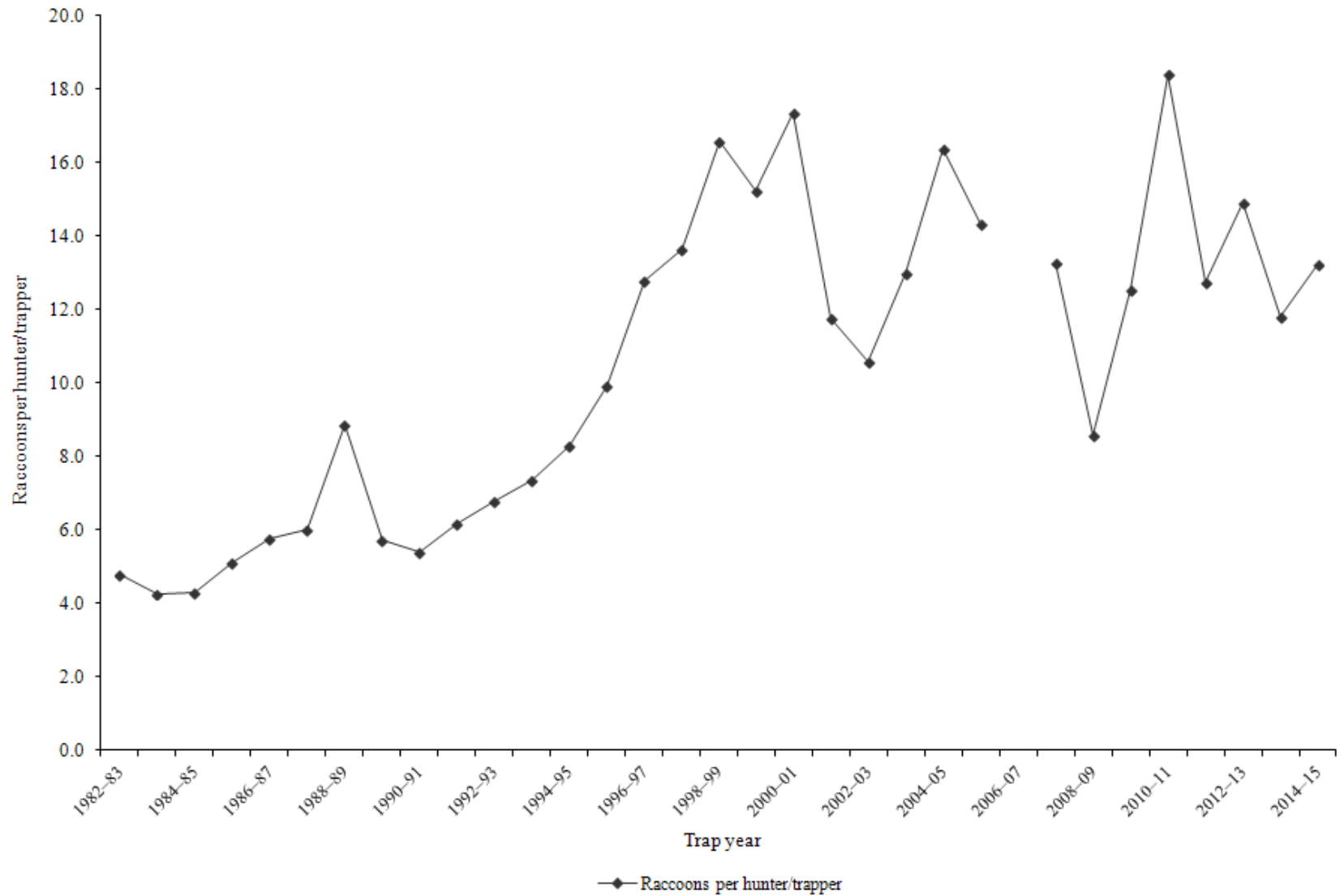
Statewide raccoon harvest statistics*, Utah 1982–2015.

Trap year	Trappers afield	Incidental harvest	Trap harvest	Hunt harvest	Set-days / raccoon	Raccoons / 1000 set-days	Raccoons / trapper	Pelt price (\$)
1982–83	178	—	853	—	19	51.3	4.8	12.34
1983–84	192	—	822	—	40	25.0	4.3	13.51
1984–85	329	—	1417	—	47	21.2	4.3	12.85
1985–86	290	—	1485	—	49	20.5	5.1	9.26
1986–87	418	—	2412	—	39	25.5	5.8	12.62
1987–88	434	—	2619	—	41	24.3	6.0	9.41
1988–89	350	—	3104	—	14	71.9	8.9	7.71
1989–90	430	—	2464	—	17	58.8	5.7	5.78
1990–91	214	—	1156	—	18	54.3	5.4	4.65
1991–92	368	—	2273	—	20	50.3	6.2	4.72
1992–93	272	—	1851	—	17	59.5	6.8	2.57
1993–94	306	—	2259	—	19	53.4	7.4	6.98
1994–95	364	—	3025	—	23	43.8	8.3	6.06
1995–96	293	—	2914	—	10	100.1	9.9	8.07
1996–97	330	—	4228	—	13	77.2	12.8	13.35
1997–98	365	—	4989	—	29	34.5	13.7	9.98
1998–99	468	—	7765	—	22	45.5	16.6	4.95
1999–00	349	—	5317	—	34	29.8	15.2	5.67
2000–01	327	—	5678	—	29	34.8	17.4	5.16
2001–02	321	—	3785	—	32	31.2	11.8	8.04
2002–03	378	—	4001	—	26	38.4	10.6	5.62
2003–04	434	—	5634	—	37	26.8	13.0	10.63
2004–05	391	—	6405	—	35	28.4	16.4	6.54
2005–06	230	—	1761	1537	246	4.1	14.3	9.83
2006–07	325	—	—	—	—	—	—	7.18
2007–08	300	—	2414	1576	50	19.8	13.3	10.85
2008–09	275	—	1639	729	58	17.4	8.6	6.21
2009–10	349	633	3439	946	39	25.9	12.6	7.09
2010–11	292	571	3958	1417	28	36.0	18.4	8.17
2011–12	289	453	3168	520	34	29.6	12.8	7.77
2012–13	377	614	4048	1577	35	28.4	14.9	14.08
2013–14	374	1066	4031	385	48	21.0	11.8	9.50
2014–15	354	743	4046	648	49	20.4	13.3	5.46
Average	332	680	3280	1037	38	37.8	10.5	8.26

Prior to the 2005–06 season, harvest by hunting and trapping were not collected separately and trapping harvest estimates included all harvest by hunters and trappers.

*Trappers and raccoons per trapper include hunters and their harvest. Set-days per raccoon and raccoons per 1000 set-days are based only on trapping activity, and do not include hunt harvest or hunter-days afield.

Statewide raccoon harvest trends, Utah 1982–2015.



Raccoon trapping harvest statistics by county and ecoregion, Utah 2014–15.

County	n	Trappers afield	Trap harvest	Traps set	Trapping days	Set-days	Set-days / raccoon	Raccoons / 1000 set-days	Raccoons / trapper
Beaver	1	3	6	13	32	127	20.0	50.0	2.0
Box Elder	6	19	728	278	595	7908	10.9	92.0	38.3
Iron	2	6	0	0	6	0	—	—	0.0
Juab	2	6	9	60	664	8730	920.0	1.1	1.5
Millard	3	9	104	70	443	2309	22.1	45.2	11.0
Tooele	0	0	—	—	—	—	—	—	—
Great Basin totals	14	44	847	421	1740	19074	22.5	44.4	19.1
Cache	9	28	133	85	848	4323	32.5	30.7	4.7
Davis	3	9	19	41	261	1732	91.3	11.0	2.0
Morgan	5	16	130	136	566	5852	45.1	22.2	8.2
Piute	3	9	73	101	136	1601	22.0	45.5	7.7
Rich	2	6	63	51	326	3530	55.8	17.9	10.0
Salt Lake	5	16	57	117	250	3606	63.3	15.8	3.6
Sanpete	4	13	253	323	1487	13317	52.6	19.0	20.0
Sevier	5	16	259	171	294	4046	15.6	64.1	16.4
Summit	3	9	54	47	164	1922	35.7	28.0	5.7
Utah	18	57	506	652	1729	27394	54.1	18.5	8.9
Wasatch	1	3	0	0	3	0	—	—	0.0
Weber	6	19	709	481	484	16913	23.9	41.9	37.3
Rocky Mountain totals	64	202	2256	2205	6549	84235	37.3	26.8	11.1
Daggett	0	0	—	—	—	—	—	—	—
Duchesne	3	9	221	225	1186	29987	135.4	7.4	23.3
Uintah	12	38	351	519	1047	22743	64.8	15.4	9.3
Uintah Basin totals	15	47	572	743	2233	52730	92.1	10.9	12.1
Carbon	3	9	85	66	247	1613	18.9	52.9	9.0
Emery	3	9	164	123	1692	31553	191.8	5.2	17.3
Garfield	0	0	—	—	—	—	—	—	—
Grand	0	0	—	—	—	—	—	—	—
Kane	0	0	—	—	—	—	—	—	—
San Juan	0	0	—	—	—	—	—	—	—
Washington	4	13	41	82	519	6191	150.6	6.6	3.3
Wayne	1	3	0	0	0	0	—	—	0.0
Colorado Plateau totals	11	35	290	272	2458	39357	135.2	7.4	8.4
Unknown	1	3	79	63	127	2531	32.0	31.3	25.0
Statewide totals*	101	319	4046	3704	13106	197927	48.9	20.4	12.7

*Statewide totals for sample size and trappers afield are not totals of the columns because trappers trapped multiple counties.

RED FOX

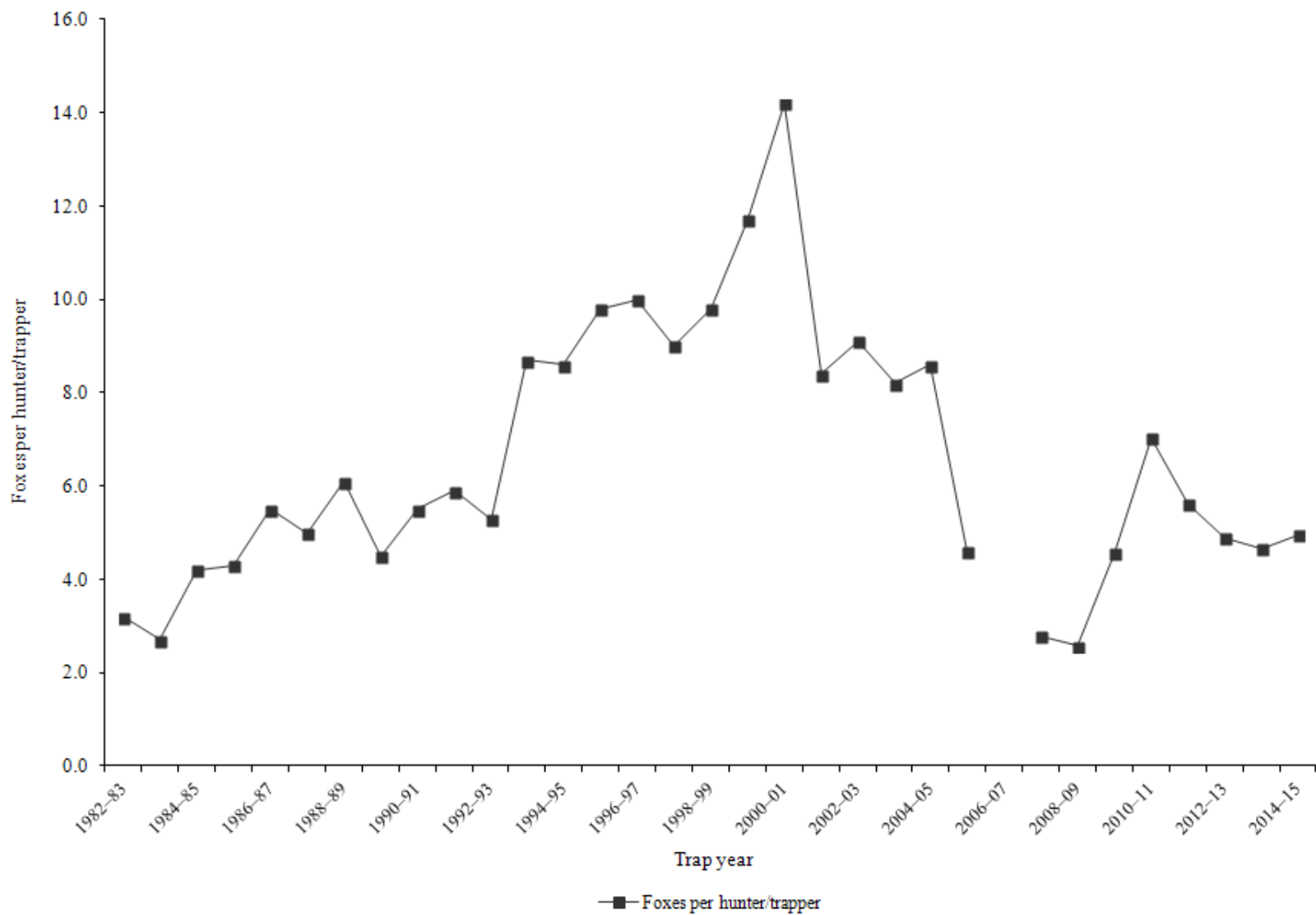
Statewide red fox harvest statistics*, Utah 1982–2015.

Trap year	Trappers afield	Incidental harvest	Trap harvest	Hunt harvest	Set-days / fox	Foxes / 1000 set-days	Foxes / trapper	Pelt price (\$)
1982–83	172	—	544	—	128	7.8	3.2	30.13
1983–84	191	—	523	—	134	7.5	2.7	28.43
1984–85	298	—	1244	—	116	8.7	4.2	25.90
1985–86	316	—	1351	—	74	13.6	4.3	15.83
1986–87	444	—	2446	—	59	17.1	5.5	20.14
1987–88	506	—	2545	—	50	20.2	5.0	13.66
1988–89	398	—	2446	—	34	29.2	6.1	6.57
1989–90	496	—	2250	—	40	25.3	4.5	7.80
1990–91	365	—	1993	—	25	40.0	5.5	6.34
1991–92	623	—	3663	—	28	35.4	5.9	10.70
1992–93	594	—	3126	—	27	37.5	5.3	10.12
1993–94	578	—	5055	—	26	38.9	8.7	14.74
1994–95	509	—	4378	—	36	28.0	8.6	15.34
1995–96	421	—	4115	—	26	38.7	9.8	18.08
1996–97	427	—	4274	—	27	36.8	10.0	17.48
1997–98	414	—	3744	—	32	31.5	9.0	11.31
1998–99	570	—	5600	—	34	29.5	9.8	8.95
1999–00	420	—	4900	—	44	22.7	11.7	14.19
2000–01	375	—	5330	—	52	19.1	14.2	16.92
2001–02	379	—	3192	—	59	16.9	8.4	24.48
2002–03	482	—	4399	—	76	13.1	9.1	28.19
2003–04	568	—	4639	—	71	14.1	8.2	18.07
2004–05	545	—	4674	—	102	9.8	8.6	18.86
2005–06	406	—	1874	—	196	5.1	4.6	24.35
2006–07	496	—	—	—	—	—	—	20.49
2007–08	407	—	1130	—	174	5.7	2.8	21.42
2008–09	339	—	872	—	261	3.8	2.6	17.98
2009–10	461	557	1908	192	102	9.8	4.6	16.32
2010–11	376	216	2435	213	84	12.0	7.0	22.62
2011–12	335	388	1757	128	84	11.9	5.6	42.47
2012–13	380	195	1690	171	83	12.1	4.9	43.50
2013–14	428	519	1934	64	154	6.5	4.7	40.39
2014–15	361	478	1714	79	161	6.2	5.0	24.30
Average	427	392	2867	141	81	19.2	6.6	19.88

Prior to the 2005–06 season, harvest by hunting and trapping were not collected separately and trapping harvest estimates included harvest by both hunters and trappers. Trap harvest includes incidental harvest.

*Trappers and foxes per trapper include hunters and their harvest. Set-days per fox and foxes per 1000 set-days are based only on trapping activity, and do not include hunt harvest or hunter-days afield.

Statewide red fox harvest trends, Utah 1982–2015.



Red fox trapping harvest statistics by county and ecoregion, Utah 2014–15.

County	n	Trappers afield	Trap harvest	Traps set	Trapping days	Set-days	Set-days / fox	Foxes / 1000 set-days	Foxes / trapper
Beaver	6	19	66	146	634	12678	190.9	5.2	3.5
Box Elder	3	9	73	57	323	2961	40.7	24.6	7.7
Iron	7	22	149	158	762	18046	121.4	8.2	6.7
Juab	1	3	3	0	3	0	0.0	—	1.0
Millard	1	3	0	6	111	221	—	0.0	0.0
Tooele	5	16	66	171	939	18884	284.3	3.5	4.2
Great Basin totals	23	73	357	538	2772	52790	147.7	6.8	4.9
Cache	4	13	9	66	323	3028	319.1	3.1	0.8
Davis	2	6	35	35	9	51	1.5	687.5	5.5
Morgan	3	9	19	51	231	2066	108.8	9.2	2.0
Piute	2	6	0	16	282	2784	—	0.0	0.0
Rich	0	0	—	—	—	—	—	—	—
Salt Lake	5	16	76	136	449	4001	52.7	19.0	4.8
Sanpete	8	25	108	253	1341	14646	136.2	7.3	4.3
Sevier	4	13	95	161	446	5877	61.9	16.1	7.5
Summit	1	3	0	0	3	0	—	—	0.0
Utah	11	35	136	297	1001	11332	83.3	12.0	3.9
Wasatch	3	9	98	155	139	1521	15.5	64.4	10.3
Weber	2	6	101	152	329	15791	156.0	6.4	16.0
Rocky Mountain totals	45	142	677	1322	4554	61096	90.3	11.1	4.8
Daggett	2	6	54	196	443	7718	143.5	7.0	8.5
Duchesne	4	13	73	187	637	27330	375.7	2.7	5.8
Uintah	9	28	183	756	1933	73193	398.9	2.5	6.4
Uintah Basin totals	15	47	310	1139	3012	108241	349.2	2.9	6.5
Carbon	4	13	85	97	460	4985	58.4	17.1	6.8
Emery	6	19	108	253	1411	25590	237.9	4.2	5.7
Garfield	7	22	79	180	610	11122	140.6	7.1	3.6
Grand	0	0	—	—	—	—	—	—	—
Kane	0	0	—	—	—	—	—	—	—
San Juan	2	6	38	79	82	1107	29.2	34.3	6.0
Washington	2	6	0	28	114	550	—	0.0	0.0
Wayne	5	16	60	199	693	10457	174.0	5.7	3.8
Colorado Plateau totals	26	82	370	837	3370	53812	145.4	6.9	4.5
Unknown	1	3	0	13	127	506	—	0.0	0.0
Statewide totals*	102	323	1714	3849	13835	276445	161.2	6.2	5.3

*Statewide totals for sample size and trappers afield are not totals of the columns because trappers trapped multiple counties.

RINGTAIL

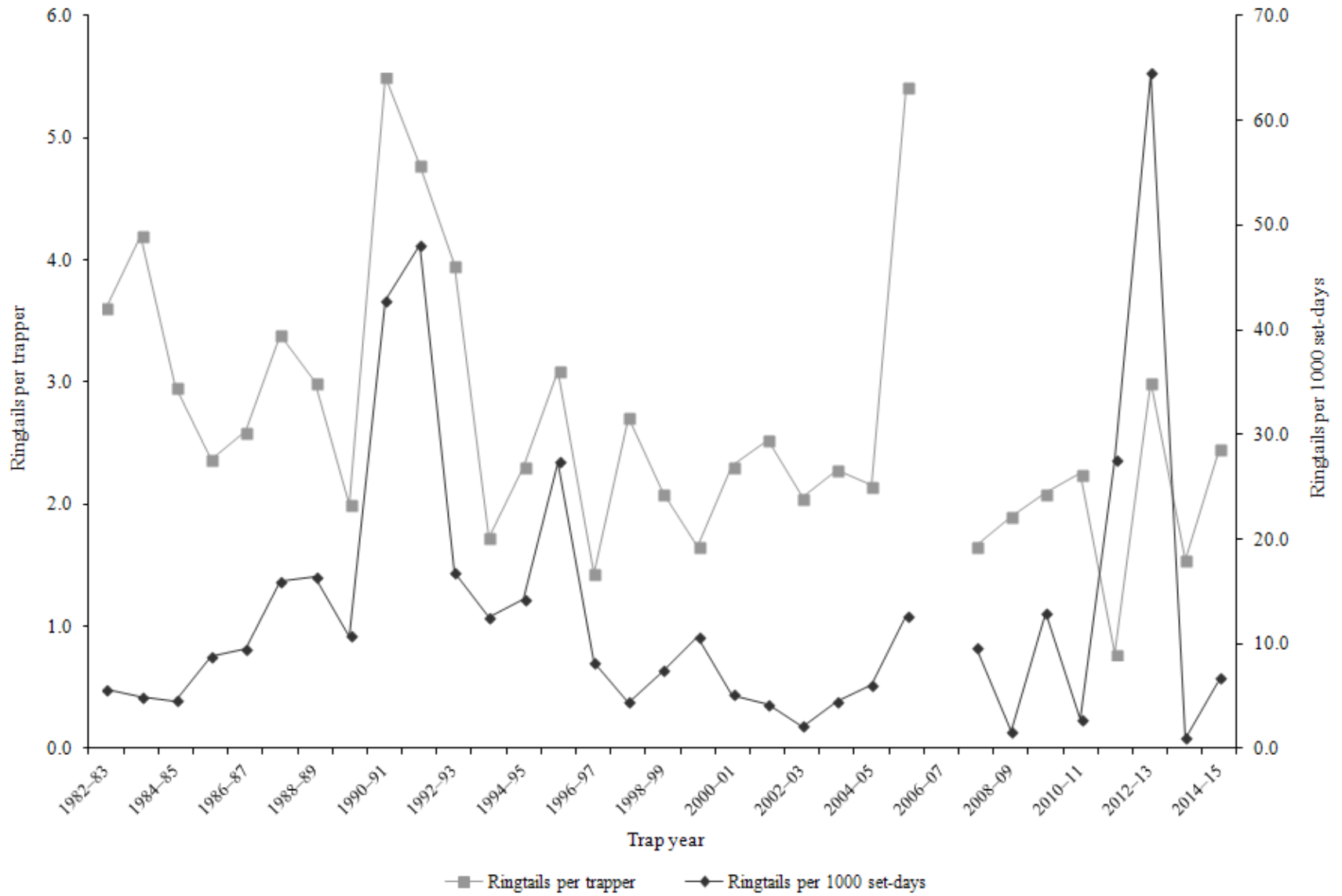
Statewide ringtail harvest statistics*, Utah 1982–2015.

Trap year	Trappers afield	Incidental harvest	Trap harvest	Hunt harvest	Set-days / ringtail	Ringtails / 1000 set-days	Ringtails / trapper	Pelt price (\$)
1982–83	90	—	325	—	176	5.7	3.6	4.40
1983–84	90	—	378	—	203	4.9	4.2	3.96
1984–85	85	—	252	—	218	4.6	3.0	3.15
1985–86	68	—	161	—	114	8.8	2.4	2.69
1986–87	79	—	205	—	105	9.6	2.6	3.64
1987–88	79	—	268	—	62	16.0	3.4	2.40
1988–89	62	—	186	—	61	16.4	3.0	5.70
1989–90	66	—	132	—	93	10.7	2.0	2.65
1990–91	18	—	99	—	23	42.8	5.5	3.50
1991–92	46	—	220	—	21	48.1	4.8	3.22
1992–93	27	—	107	—	59	16.9	4.0	3.97
1993–94	37	—	64	—	80	12.6	1.7	4.04
1994–95	69	—	159	—	70	14.3	2.3	6.41
1995–96	44	—	136	—	37	27.4	3.1	6.96
1996–97	32	—	46	—	122	8.2	1.4	11.68
1997–98	21	—	57	—	227	4.4	2.7	2.99
1998–99	66	—	138	—	134	7.5	2.1	4.17
1999–00	61	—	101	—	93	10.7	1.7	7.03
2000–01	51	—	118	—	194	5.2	2.3	6.00
2001–02	40	—	101	—	236	4.2	2.5	10.29
2002–03	56	—	115	—	474	2.1	2.1	5.20
2003–04	42	—	96	—	223	4.5	2.3	6.83
2004–05	59	—	127	—	165	6.1	2.2	11.12
2005–06	19	—	103	—	79	12.7	5.4	9.31
2006–07	98	—	—	—	—	—	—	12.37
2007–08	65	—	108	—	104	9.6	1.7	14.86
2008–09	31	—	59	—	621	1.6	1.9	10.70
2009–10	22	63	46	—	77	13.0	2.1	15.00
2010–11	16	26	36	—	356	2.8	2.3	18.91
2011–12	18	14	14	—	36	27.6	0.8	12.21
2012–13	7	41	21	0	16	64.5	3.0	15.66
2013–14	24	64	37	0	991	1.0	1.5	17.91
2014–15	13	32	32	0	150	6.7	2.5	17.27
Average	49	40	126	0	176	13.5	2.7	8.07

Prior to the 2005–06 season, harvest by hunting and trapping were not collected separately and trapping harvest estimates included harvest by both hunters and trappers. Trap harvest includes incidental harvest.

*Trappers and ringtails per trapper include hunters and their harvest. Set-days per ringtail and ringtails per 1000 set-days are based only on trapping activity, and do not include hunt harvest or hunter-days afield.

Statewide ringtail harvest trends, Utah 1982–2015.



SPOTTED SKUNK

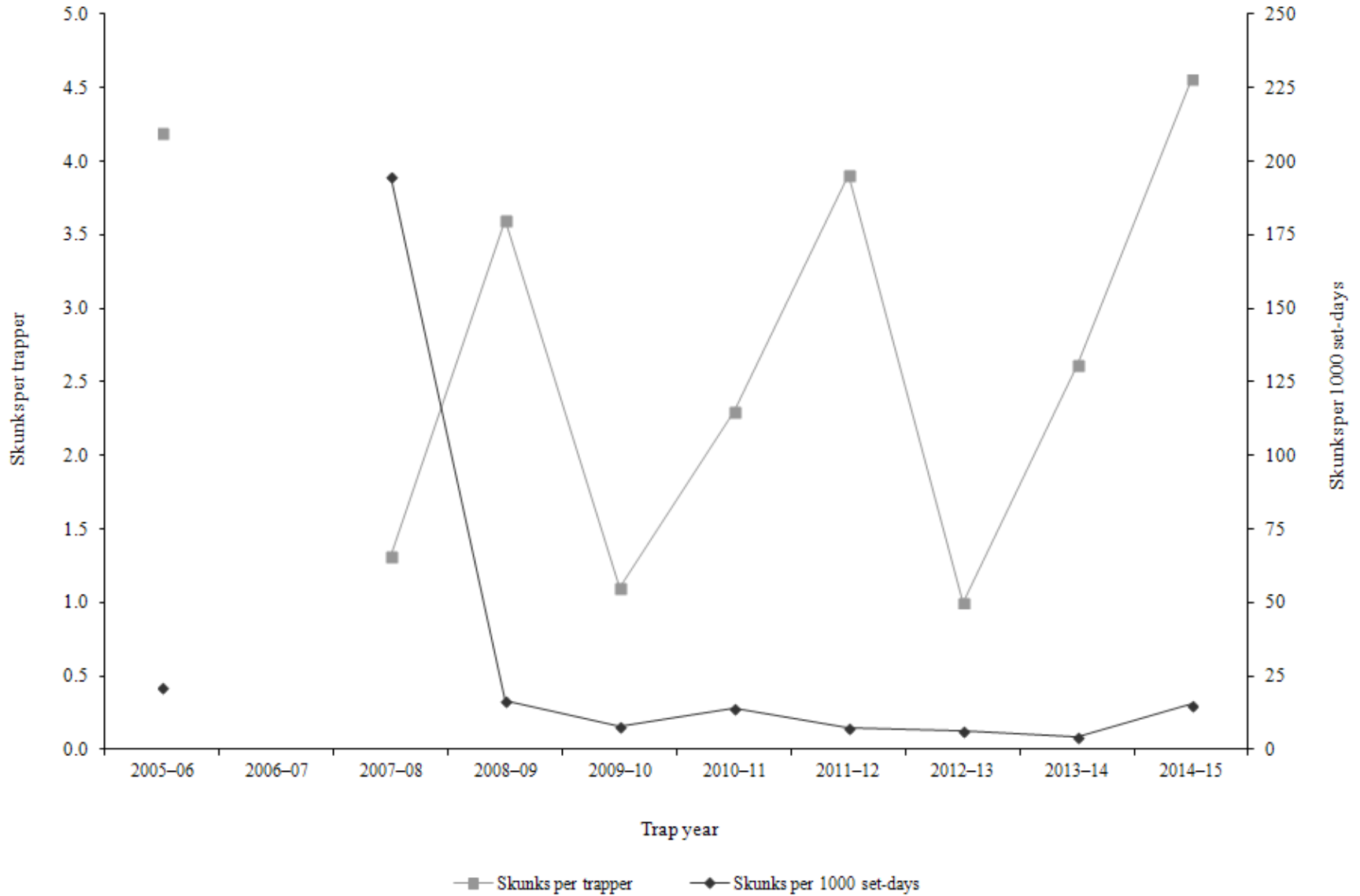
Statewide spotted skunk harvest statistics*, Utah 2005–2015.

Trap year	Trappers afield	Incidental harvest	Trap harvest	Hunt harvest	Set-days / skunk	Skunks / 1000 set-days	Skunks / trapper	Pelt price (\$)
2005–06	34	—	144	—	47	21.2	4.2	5.37
2006–07	106	—	—	—	—	—	—	12.42
2007–08	34	—	45	—	5	194.8	1.3	12.07
2008–09	67	—	238	—	60	16.8	3.6	8.00
2009–10	19	95	21	—	124	8.1	1.1	15.00
2010–11	33	200	76	—	71	14.0	2.3	15.00
2011–12	11	221	14	29	135	7.4	3.9	8.25
2012–13	17	137	17	0	156	6.4	1.0	14.48
2013–14	13	206	17	17	230	4.3	2.6	13.51
2014–15	25	285	114	0	65	15.5	4.6	9.80
Average	36	191	76	12	99	32.1	2.7	11.39

Prior to 2005–06, spotted skunk harvest and trapping activity were combined with striped skunk. In addition, harvest by hunting and trapping were not collected separately and trapping harvest estimates included harvest by both hunters and trappers. Trap harvest includes incidental harvest.

*Trappers and skunks per trapper include hunters and their harvest. Set-days per skunk and skunks per 1000 set-days are based only on trapping activity, and do not include hunt harvest or hunter-days afield.

Statewide spotted skunk* harvest trends, Utah 2005–2015.



*Prior to 2005–06, spotted skunk harvest and trapping activity were combined with striped skunk.

STRIPED SKUNK

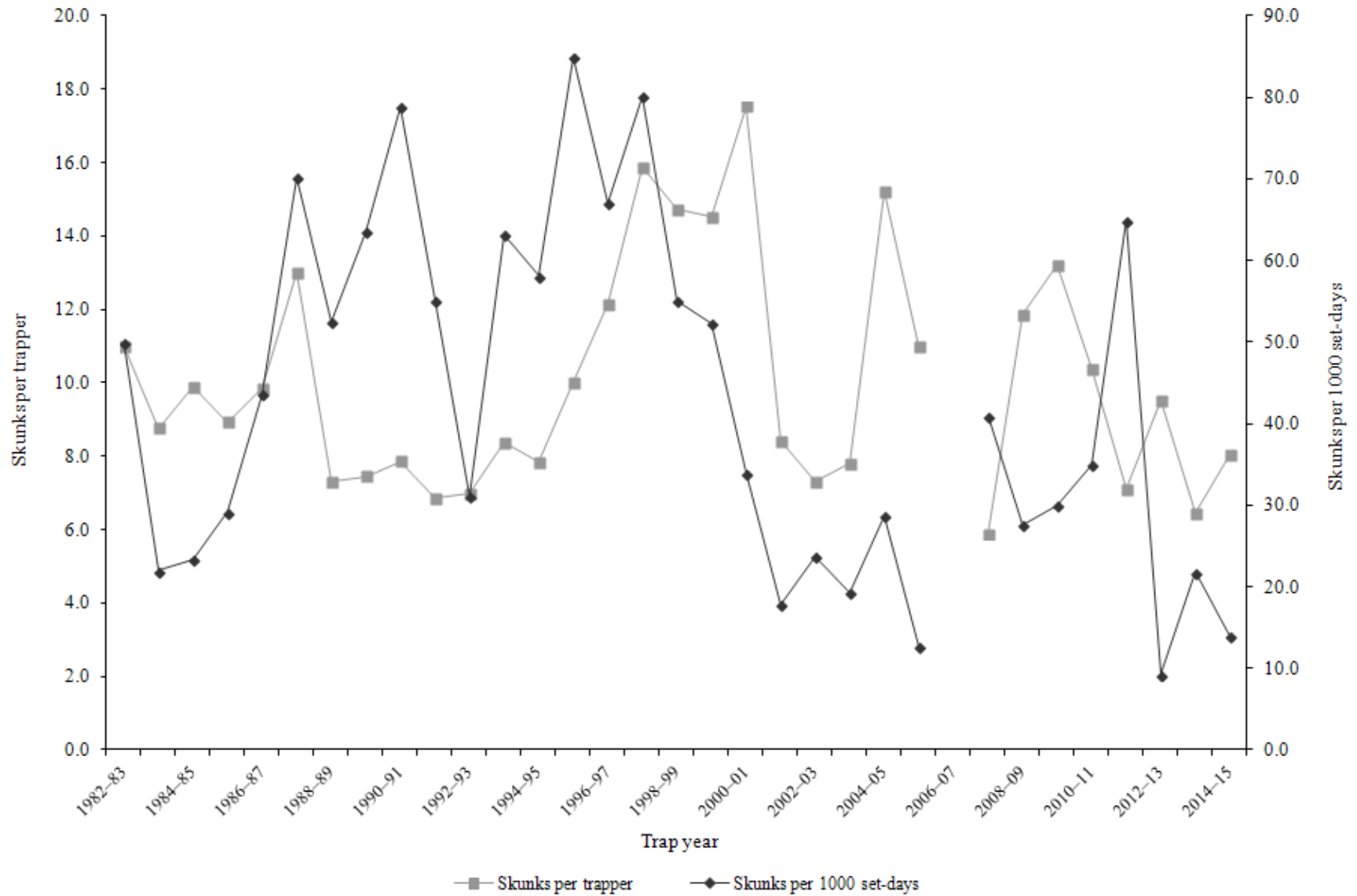
Statewide striped skunk harvest statistics*, Utah 1982–2015.

Trap year	Trappers afield	Incidental harvest	Trap harvest	Hunt harvest	Set-days / skunk	Skunks / 1000 set-days	Skunks / trapper	Pelt price (\$)
1982–83	140	—	1540	—	20	49.9	11.0	3.00
1983–84	144	—	1262	—	45	22.0	8.8	2.85
1984–85	111	—	1097	—	43	23.3	9.9	2.17
1985–86	195	—	1741	—	34	29.1	8.9	—
1986–87	188	—	1851	—	23	43.6	9.8	—
1987–88	185	—	2404	—	14	70.2	13.0	1.05
1988–89	132	—	966	—	19	52.5	7.3	0.30
1989–90	173	—	1289	—	16	63.6	7.5	0.30
1990–91	82	—	645	—	13	78.8	7.9	0.30
1991–92	151	—	1037	—	18	55.2	6.9	4.00
1992–93	132	—	922	—	32	31.1	7.0	5.30
1993–94	175	—	1465	—	16	63.2	8.4	7.35
1994–95	183	—	1438	—	17	58.1	7.9	9.29
1995–96	175	—	1753	—	12	84.9	10.0	6.63
1996–97	142	—	1726	—	15	67.1	12.2	6.00
1997–98	182	—	2890	—	12	80.2	15.9	4.11
1998–99	219	—	3227	—	18	55.1	14.7	5.67
1999–00	188	—	2730	—	19	52.3	14.5	8.50
2000–01	220	—	3857	—	29	34.0	17.5	8.69
2001–02	214	—	1798	—	56	17.8	8.4	6.79
2002–03	237	—	1732	—	42	23.7	7.3	4.24
2003–04	295	—	2305	—	52	19.3	7.8	10.00
2004–05	280	—	4264	—	35	28.7	15.2	4.64
2005–06	95	—	1043	—	79	12.6	11.0	5.37
2006–07	138	—	—	—	—	—	—	6.07
2007–08	144	—	848	—	24	41.0	5.9	4.52
2008–09	143	—	1697	—	36	27.6	11.9	3.15
2009–10	124	1632	1638	—	33	30.0	13.2	6.47
2010–11	154	1136	1597	—	29	35.0	10.4	5.29
2011–12	107	916	602	160	15	65.0	7.1	4.55
2012–13	137	1159	1241	65	108	9.3	9.5	5.01
2013–14	108	1272	654	44	46	21.8	6.5	6.96
2014–15	82	1230	645	16	72	13.9	8.1	4.94
Average	163	1224	1685	71	33	42.5	10.0	4.95

Prior to 2005–06, harvest and trapping activity included both striped skunk and spotted skunk. In addition, harvest by hunting and trapping were not collected separately and trapping harvest estimates included harvest by both hunters and trappers. Trap harvest includes incidental harvest.

*Trappers and skunks per trapper include hunters and their harvest. Set-days per skunk and skunks per 1000 set-days are based only on trapping activity, and do not include hunt harvest or hunter-days afield.

Statewide striped skunk* harvest trends, Utah 1982–2015.



*Prior to 2005–06, harvest and trapping activity included both striped skunk and spotted skunk.

Striped skunk trapping harvest statistics by county and ecoregion, Utah 2014–15.

County	n	Trappers afield	Trap harvest	Traps set	Trapping days	Set-days	Set-days / skunk	Skunks / 1000 set-days	Skunks / trapper
Beaver	0	0	—	—	—	—	—	—	—
Box Elder	1	3	51	6	63	127	2.5	400.0	16.0
Iron	0	0	—	—	—	—	—	—	—
Juab	1	3	0	16	63	316	—	0.0	0.0
Millard	1	3	3	22	3	22	7.0	142.9	1.0
Tooele	1	3	3	3	6	6	2.0	500.0	1.0
Great Basin totals	4	13	57	47	136	471	8.3	120.8	4.5
Cache	1	3	13	32	41	411	32.5	30.8	4.0
Davis	1	3	3	16	79	395	125.0	8.0	1.0
Morgan	3	9	22	47	228	2002	90.4	11.1	2.3
Piute	0	0	—	—	—	—	—	—	—
Rich	2	6	98	66	468	5314	54.2	18.5	15.5
Salt Lake	0	0	—	—	—	—	—	—	—
Sanpete	3	9	22	57	256	845	38.1	26.2	2.3
Sevier	0	0	—	—	—	—	—	—	—
Summit	0	0	—	—	—	—	—	—	—
Utah	2	6	13	32	139	595	47.0	21.3	2.0
Wasatch	0	0	—	—	—	—	—	—	—
Weber	2	6	32	47	259	1771	56.0	17.9	5.0
Rocky Mountain totals	14	44	203	297	1471	11334	56.0	17.9	4.6
Daggett	1	3	25	38	380	4555	180.0	5.6	8.0
Duchesne	0	0	—	—	—	—	—	—	—
Uintah	4	13	155	114	424	4207	27.1	36.8	12.3
Uintah Basin totals	5	16	180	152	803	8762	48.6	20.6	11.4
Carbon	0	0	—	—	—	—	—	—	—
Emery	2	6	190	79	1629	24783	130.6	7.7	30.0
Garfield	0	0	—	—	—	—	—	—	—
Grand	0	0	—	—	—	—	—	—	—
Kane	0	0	—	—	—	—	—	—	—
San Juan	0	0	—	—	—	—	—	—	—
Washington	0	0	—	—	—	—	—	—	—
Wayne	0	0	—	—	—	—	—	—	—
Colorado Plateau totals	2	6	190	79	1629	24783	130.6	7.7	30.0
Unknown	0	0	—	—	—	—	—	—	—
Statewide totals*	24	76	629	576	4039	45350	72.0	13.9	8.3

*Statewide totals for sample size and trappers afield are not totals of the columns because trappers trapped multiple counties.

WEASEL

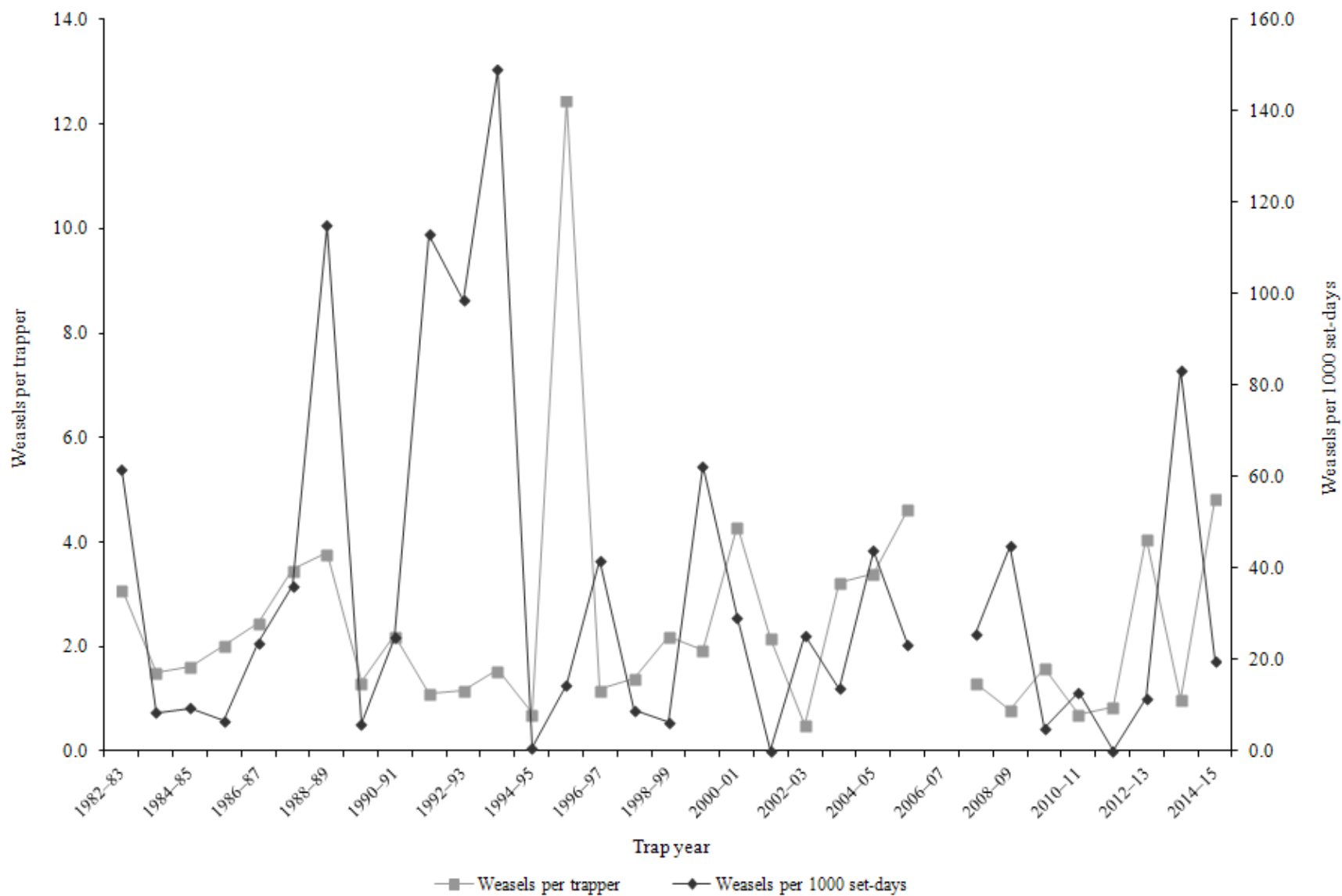
Statewide weasel harvest statistics*, Utah 1982–2015.

Trap year	Trappers afield	Incidental harvest	Trap harvest	Hunt harvest	Set-days / weasel	Weasels / 1000 set-days	Weasels / trapper	Pelt price (\$)
1982–83	19	—	59	—	16	61.5	3.1	1.00
1983–84	22	—	33	—	117	8.5	1.5	0.00
1984–85	46	—	75	—	106	9.4	1.6	0.75
1985–86	33	—	67	—	149	6.7	2.0	0.00
1986–87	50	—	123	—	42	23.6	2.5	1.50
1987–88	61	—	212	—	28	36.1	3.5	1.18
1988–89	24	—	91	—	9	115.0	3.8	0.25
1989–90	25	—	33	—	166	6.0	1.3	0.25
1990–91	14	—	31	—	40	24.8	2.2	0.30
1991–92	17	—	19	—	9	113.1	1.1	0.30
1992–93	24	—	28	—	10	98.6	1.2	0.30
1993–94	20	—	31	—	7	149.0	1.6	5.11
1994–95	18	—	13	—	1189	0.8	0.7	1.57
1995–96	24	—	299	—	69	14.6	12.5	3.08
1996–97	11	—	13	—	24	41.7	1.2	7.40
1997–98	20	—	28	—	111	9.0	1.4	3.03
1998–99	15	—	33	—	157	6.4	2.2	5.50
1999–00	34	—	66	—	16	62.4	1.9	—
2000–01	36	—	155	—	34	29.3	4.3	8.50
2001–02	6	—	13	—	0	—	2.2	—
2002–03	6	—	3	—	39	25.4	0.5	4.76
2003–04	18	—	58	—	73	13.8	3.2	—
2004–05	25	—	85	—	23	43.9	3.4	2.90
2005–06	41	—	190	—	43	23.3	4.6	—
2006–07	49	—	—	—	—	—	—	6.26
2007–08	11	—	15	—	39	25.6	1.3	2.99
2008–09	14	—	11	—	22	44.9	0.8	—
2009–10	29	13	47	—	196	5.1	1.6	7.64
2010–11	23	20	17	—	78	12.8	0.7	7.21
2011–12	25	4	0	21	—	0.0	0.8	4.58
2012–13	27	21	110	0	87	11.5	4.1	—
2013–14	3	10	3	0	12	83.3	1.0	5.00
2014–15	13	13	63	0	51	19.7	4.8	3.89
Average	24	14	63	5	96	36.3	2.5	3.16

Prior to the 2005–06 season, harvest by hunting and trapping were not collected separately and trapping harvest estimates included harvest by both hunters and trappers. Trap harvest includes incidental harvest.

*Trappers and weasels per trapper include hunters and their harvest. Set-days per weasel and weasels per 1000 set-days are based only on trapping activity, and do not include hunt harvest or hunter-days afield.

Statewide weasel harvest trends, Utah 1982–2015.



APPENDIX: UTAH FURBEARER MANAGEMENT ECOREGIONS

