

UTAH FURBEARER ANNUAL REPORT 2012-13



CLARK BRIDSON



Publication No. 13-18



UTAH FURBEARER ANNUAL REPORT 2012–13

Prepared by:

Heather H. Bernales
Biometrician

and

John Shivik
Mammals Program Coordinator

Publication No. 13-18

Annual Performance Report for Federal Aid Project W-65-M, segment 61

State of Utah
Department of Natural Resources
DIVISION OF WILDLIFE RESOURCES

Gregory Sheehan
Director

James F. Karpowitz
Director, 2005-2012

TABLE OF CONTENTS

Definitions.....	1
Introduction.....	2
Methods.....	2
Results.....	3
Harvest by species.....	12
Badger.....	13
Beaver.....	15
Bobcat.....	18
Coyote.....	28
Gray fox.....	32
Kit fox.....	35
Marten.....	37
Mink.....	40
Muskrat.....	43
Raccoon.....	46
Red fox.....	49
Ringtail.....	53
Spotted skunk.....	55
Striped skunk.....	57
Weasel.....	60
Appendix: Utah furbearer management ecoregions.....	62

DEFINITIONS

Incidental harvest: Furbearers harvested in traps that were intended for a different furbearer species.

Trap year: Time frame corresponding to the 2012–13 furbearer seasons, as outlined in the 2013–13 Utah Furbearer Guidebook.

Trappers afield: Number of furbearer license holders who trapped furbearers during a particular trap year. License holders who took furbearers by means other than trapping, including shooting or with the aid of dogs, are included in this figure except for bobcat.

Total harvest: Number of furbearers of a particular species taken by means of trapping and hunting by furbearer license holders. This figure does not include harvest of unprotected wildlife, such as coyote, muskrat, red fox, raccoon, or striped skunk, taken by persons who did not purchase a furbearer license, nor does it include harvest of furbearers taken for creating a nuisance or causing damage.

Total set-days: Number of traps set during the furbearer season for the trapping of a particular species, multiplied by the number of days these traps were in the field. This figure pertains only to trapping, and does not include days afield by furbearer hunters or pursuers.

Pelt price: Average price paid for pelts of a specific furbearer species harvested in Utah, obtained mainly from a summary of the prices bid at the Utah Trappers Association fur auction, as well as prices from a survey of registered furdealers buying pelts harvested in Utah.

Wildlife Services harvest (coyote only): Number of coyotes killed by USDA-APHIS Wildlife Services in a particular year. Prior to 2006–07, Wildlife Services yearly harvest summaries applied to their fiscal year, which begins October 1 and ends September 30, although most harvest takes place during spring. Beginning in 2006–07, Wildlife Services harvest is reported for the period July 1 to June 30 of the following year.

INTRODUCTION

The furbearer harvest report presents furbearer harvest and trapper/hunter effort trends across the state of Utah, based on data collected from furbearer trappers and hunters. This report represents the furbearer portion of the Annual Performance Report for Federal Aid Project W-65-M, segment 61, grant agreement period October 1, 2012 through September 30, 2013. This Federal Aid project covers the 2012–13 trapping seasons. Additionally, this report presents statewide trends since the early 1980s and population trend indicators for bobcats as well as the estimated economic value of Utah’s furbearer harvest each year. Furbearer harvest and trapper/hunter effort may have been more driven by pelt price than by availability, so annual fur harvest should not be used as the sole means to assess/project population sizes.

Furbearers included badger, beaver, bobcat, gray fox, kit fox, mink, marten, ringtail, spotted skunk, and weasel. A furbearer license was required to harvest any of these species, and an additional permit was required to harvest bobcat or marten. There were no bag limits for furbearers, except bobcats. The bag limit for bobcats in 2012-13 was 3 bobcats. Season dates for badger, gray fox, kit fox, marten, ringtail, spotted skunk, and weasel were September 29, 2012 through February 3, 2013. Bobcat season was November 28, 2012 through February 3, 2013. Season dates for beaver and mink were September 29, 2012 through April 8, 2013.

Coyote, muskrat, red fox, raccoon, and striped skunk were not under the jurisdiction of the Division, and/or were unprotected. Those species could be taken year round without a license; therefore, results presented in this report do not include harvest by persons who did not purchase a furbearer license. It was prohibited to take black-footed ferret, fisher, lynx, river otter, wolf, and wolverine.

METHODS

In 2006, the Utah Division of Wildlife Resources switched from a mail questionnaire to a telephone survey. Telephone surveys were thought to be better than mail questionnaire because they achieved a more random sample, thus, reducing the response bias caused by trappers who did not harvest animals not returning their questionnaires. Telephone surveys also allowed the Division to contact a smaller number of license holders to achieve the same level of accuracy. The accuracy of that phone survey was dependent upon the following assumptions: (1) a random sample was achieved (i.e., there was no response bias by those who harvested successfully versus those who did not), (2) respondents recorded or remembered data accurately and did not guess or lie, and (3) respondents clearly understood the questions.

For bobcats, we determined the total number of bobcat trappers/hunters who were surveyed, and this number was projected by the total number of furbearer trappers/hunters who purchased one or more bobcat permits. For bobcats and martens, it was required by proclamation that the pelts of animals harvested in Utah be brought to a Division office or officer to have a permanent tag attached and to surrender the lower jaw. Bobcat and marten harvest data presented in this report, such as county of kill and sex of harvest, were collected at this time; as such, this information is not projected. Additional information on bobcat harvest, such as harvest effort by method, number of sets, and number of days was determined by telephone survey. Due to the small

number of marten trappers in Utah, we did not attempt to survey marten trappers. Instead, since a separate permit is required to trap marten, we assumed that all those who purchased a marten permit attempted to trap marten.

To determine age structure of the bobcat harvest, a canine tooth from each bobcat jaw was sectioned, and aged using cementum annuli by Matson's Lab in Milltown, Montana. Survival rates were estimated using the Chapman-Robson estimator. Pelt prices were obtained mainly from a summary of the prices bid at the Utah Trappers Association fur auction, as well as from a survey of registered furdealers buying pelts harvested in Utah.

Because some furbearer species in Utah were rare or not highly sought after by trappers, it was not possible to achieve sufficient sample sizes for these species to make valid statistical inferences. Although the trends for statewide harvest and effort were still valid, at the county level, the harvest and effort estimates had low precision and were likely inaccurate. As such, results by county were only reported for species with a sample size ≥ 20 .

Corrections and Clarifications

In an effort to obtain information on how many furbearers of a given species were taken incidentally, furbearer trappers were asked the question "Did you harvest any (species) in traps that were set for a different species, and, if so, how many?" Prior to 2009–10, all incidental harvest was included in the total harvest and harvest effort statistics. In the 2009–10 and 2010–11 annual reports, incidental harvest was included in statewide summaries of total furbearer harvest, but not in species-specific tables. This omission in 2009–10 and 2010–11 caused some confusion because harvest totals did not match between tables. Furthermore, comparisons of species-specific trapping harvest with prior years' numbers were confounded. This annual report was modified, beginning with the 2011–12 report, to include incidental harvest in species-specific statewide historical harvest tables, as well as split out hunt harvest from trapping harvest.

RESULTS

License Sales and General Survey Results

Beginning December 1, 2005, furbearer licenses were valid for 365 days from the date of purchase. Because of this change, we used the 365-day period of April 1 to March 31 to determine the total number of furbearer licenses sold for the furbearer season. A total of 2,132 furbearer licenses were sold for the 2012–13 season. The percentage of license holders who bought a furbearer license but did not attempt to harvest furbearers was 34%. The number of trappers afield in 2012–13 was 1,398.

Furbearer Harvest and Historical Trends

The majority of the harvest taken by furbearer license holders in 2012–13 was of non-protected species—coyote, muskrat, raccoon, red fox, and striped skunk—and the total harvest of these species has fluctuated considerably over the last ten years. Total harvest of regulated furbearer

species (i.e., species with designated trapping seasons) was 6,844 in 2012–13, which was near the 10-yr average of 6,158.

Pelt Price and Economic Value

The estimated economic value of Utah's furbearer harvest in 2012–13 was \$1,409,567. Average pelt price was up for all furbearer species, except badger, coyote, and kit fox, compared with 2011–12. For many furbearer species, average pelt price was higher in 2012–13 than it has been in any other year.

Summary of furbearer license sales and survey responses, Utah 1982–2013.

Trap year	Furbearer licenses sold			License holders sampled		Projection factor	% license holders not afield
	Resident	Nonresident	Total	Total	Percent (%)		
1982–83	—	—	1325	664	50.1	—	—
1983–84	—	—	1367	616	45.1	—	—
1984–85	—	—	1491	806	54.1	—	—
1985–86	—	—	1424	680	47.8	—	—
1986–87	—	—	1342	585	43.6	—	—
1987–88	—	—	1576	731	46.4	—	—
1988–89	—	—	1318	721	54.7	—	—
1989–90	—	—	1084	597	55.1	—	—
1990–91	—	—	949	513	54.1	—	30.0
1991–92	—	—	1210	689	56.9	—	2.2
1992–93	—	—	1426	857	60.1	—	16.0
1993–94	—	—	1315	—	—	—	—
1994–95	—	—	1287	585	45.5	—	7.0
1995–96	—	—	1240	683	55.1	—	21.2
1996–97	—	—	1131	606	53.6	—	25.4
1997–98	—	—	1190	498	41.8	—	19.5
1998–99	—	—	1191	395	33.2	—	19.8
1999–00	1172	39	1211	458	37.8	2.6	11.6
2000–01	1204	20	1224	420	34.3	2.9	12.4
2001–02	956	21	977	302	30.9	3.2	11.6
2002–03	1409	40	1449	514	35.5	2.8	16.3
2003–04	1729	47	1776	597	33.6	3.0	16.9
2004–05	1830	65	1895	615	32.5	3.1	18.2
2005–06*	1631	57	1688	260	15.4	6.5	27.7
2006–07	2029	81	2110	262	12.4	1	26.7
2007–08	2085	55	2140	563	26.3	3.8	31.8
2008–09	2045	57	2102	750	35.7	2.8	34.8
2009–10	1902	34	1936	798	41.2	2.4	30.2
2010–11	1788	29	1817	555	30.5	3.3	30.1
2011–12	1856	36	1892	531	28.1	3.6	33.3
2012–13	2080	52	2132	622	29.2	3.4	34.4
Average	1694	45	1491	582	40.7	3.7	21.7

*Starting in 2006, a telephone survey replaced the mail questionnaire. In 2010 only, the telephone harvest survey was supplemented with an additional Internet-based survey.

Statewide total furbearer harvest* estimates by species, Utah 2003–2013.

Species	Trap year										Average 2003–13
	2003–04	2004–05	2005–06	2006–07**	2007–08	2008–09	2009–10	2010–11	2011–12	2012–13	
Badger	453	432	120	—	275	287	334	309	217	302	303
Beaver	1781	2664	2239	—	745	1165	1910	1052	1026	2276	1651
Bobcat	2027	1954	2926	3377	2437	2062	1167	1002	1245	1365	1956
Coyote	6660	7173	4229	—	7637	6945	6674	8128	5296	5749	6499
Gray fox	1749	942	603	—	1093	1747	1392	907	1002	1288	1191
Kit fox	638	259	183	—	39	104	51	45	110	373	200
Marten	0	0	12	7	21	4	2	36	14	26	12
Mink	673	317	222	—	186	242	395	636	221	867	418
Muskrat	10777	15016	824	—	1665	1198	5505	7698	8266	13650	7178
Raccoon	5634	6405	3298	—	3990	2368	5018	5946	4141	6239	4782
Red fox	4639	4674	1874	—	1130	872	2657	2864	2273	2056	2560
Ringtail	96	127	103	—	108	59	109	62	28	62	84
Skunk (total)	2305	4264	—	—	—	—	—	—	—	—	3285
Spotted skunk	—	—	144	—	45	238	116	276	264	154	177
Striped skunk	—	—	1043	—	848	1697	3270	2733	1679	2465	1962
Weasel	58	85	190	—	15	11	60	37	25	131	68

Prior to the 2005–06 trap season, spotted skunk and striped skunk harvest were not split out.

*Total harvest includes incidental take.

**Due to errors in the 2006–07 furbearer season telephone survey, harvest and effort data is unavailable for all species but bobcat and marten.

Statewide furbearer trapping harvest statistics* by species, Utah 2012–13.

Species	Trappers afield	Trap harvest	Set-days	Set-days / furbearer	Furbearers / 1000 set-days	Furbearers / trapper	Pelt price (\$)
Badger	65	117	18958	163	6.1	1.8	17.36
Beaver	257	2245	59244	26	37.9	8.7	20.26
Bobcat	836	1214	475902	392	2.6	1.5	560.96
Coyote	545	3269	604955	185	5.4	6.0	39.56
Gray fox	123	1069	81835	77	13.1	8.7	31.15
Kit fox	24	315	25080	80	12.6	13.1	14.37
Marten	39	26	—	—	—	0.7	56.24
Mink	93	706	49091	70	14.4	7.6	19.18
Muskrat	189	13530	306209	23	44.2	71.7	8.11
Raccoon	339	4048	142711	35	28.4	11.9	14.08
Red fox	329	1690	140037	83	12.1	5.1	42.50
Ringtail	3	21	319	16	64.5	6.0	15.66
Spotted skunk	17	17	2670	156	6.4	1.0	14.48
Striped skunk	117	1241	134103	108	9.3	10.6	5.01
Weasel	27	110	9522	87	11.5	4.0	—

*Does not include incidental harvest.

Statewide furbearer hunting harvest by species, Utah 2012–13.

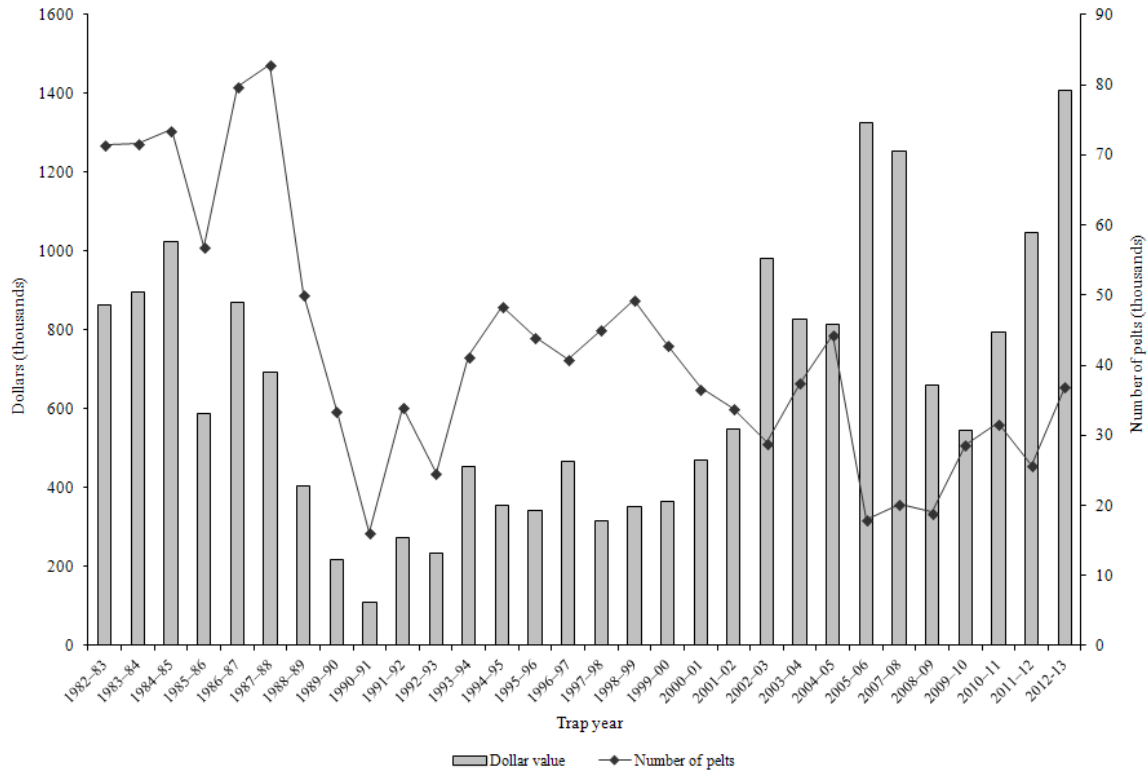
Species	Hunters afield	Hunt harvest	Hunting days	Days / furbearer	Furbearers / hunter
Badger	34	38	120	3.2	1.6
Beaver	10	14	14	1.0	8.4
Bobcat	206	151	2739	18.1	0.7
Coyote	518	2288	9696	4.2	4.4
Gray fox	7	3	41	12.0	0.5
Kit fox	7	17	21	1.2	2.5
Mink	17	14	672	49.0	0.8
Muskrat	3	3	17	5.0	1.0
Raccoon	62	1577	1244	0.8	25.6
Red fox	86	171	1272	7.4	2.0
Ringtail	3	0	34	—	0.0
Spotted skunk	0	—	—	—	—
Striped skunk	21	65	45	0.7	3.2
Weasel	0	—	—	—	—

Number of furbearers harvested in traps set for other species, Utah 2012–13.

Species	Incidental harvest	Trap / hunt harvest	Total harvest	% incidental harvest
Badger	147	154	301	48.8
Beaver	17	2259	2276	0.7
Bobcat	50*	1365	1365	3.7
Coyote	192	5557	5749	3.3
Gray fox	216	1073	1289	16.8
Kit fox	41	332	373	11.0
Marten	0	26	26	0.0
Mink	147	720	867	17.0
Muskrat	117	13534	13651	0.9
Raccoon	614	5625	6239	9.8
Red fox	195	1861	2056	9.5
Ringtail	41	21	62	66.1
Spotted skunk	137	17	154	89.0
Striped skunk	1159	1306	2465	47.0
Weasel	21	110	131	16.0
Total	3094	33960	37004	8.4

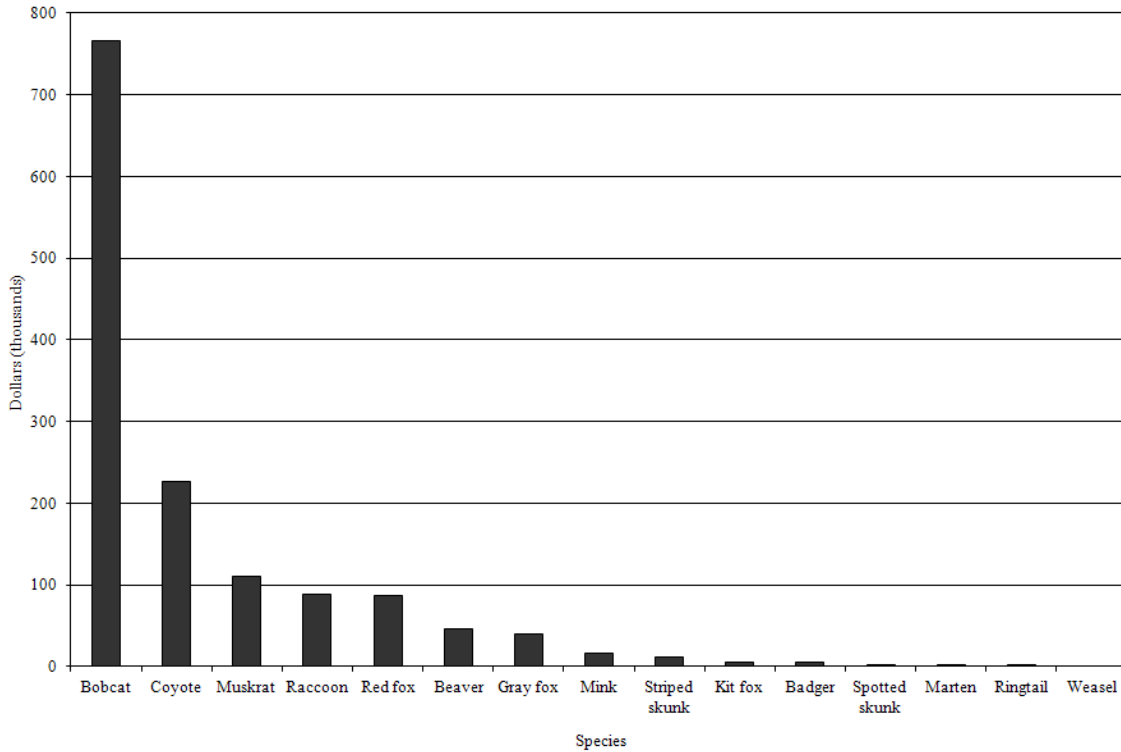
*Incidental bobcat harvest is accounted for in trap harvest.

Estimated economic value of the furbearer harvest taken by trappers in Utah, 1982–2013.



*No data available for 2007.

Proportional economic value of the furbearer harvest taken by trappers in Utah, by species, 2012–13.



Economic value* (in dollars) of furbearer species in Utah's annual furbearer harvest, Utah 1982–2013.

Trap year	Species														Total economic value (\$)
	Badger	Beaver	Bobcat	Coyote	Gray fox	Kit fox	Marten	Mink	Muskrat	Raccoon	Red fox	Ringtail	Skunk	Weasel	
1982–83	5945	20418	434340	203240	37352	7244	10	4394	119096	10526	16391	1430	4620	59	865064
1983–84	4794	25211	498960	152358	34353	8369	1680	3460	136033	11105	14869	1497	3597	0	896285
1984–85	6794	43796	511464	193809	48147	7272	288	4948	133589	18208	32220	794	22126	56	1023511
1985–86	1964	47463	301410	95322	21147	4568	2783	5022	72903	13751	21386	433	0	0	588152
1986–87	3239	93684	316416	166417	36848	5415	565	8802	157919	30439	49262	746	0	185	869938
1987–88	2772	69184	250635	107590	35779	5751	2000	12703	144058	24645	34765	643	2524	250	693300
1988–89	1943	27264	230282	27104	14837	4488	310	9129	46760	23932	16070	1060	290	23	403492
1989–90	1749	40991	85986	28913	5825	1164	0	7018	15039	14242	17550	350	387	8	219223
1990–91	1250	10066	45849	20892	2060	869	0	3437	6463	5375	12636	347	194	9	109446
1991–92	2015	13338	100672	65100	2762	520	0	4924	31275	10729	39194	708	4148	6	275390
1992–93	2308	7399	105390	57740	2988	821	0	2850	13715	4757	31635	425	4887	8	234924
1993–94	1709	16888	148962	128971	8244	1412	0	3970	42502	15768	74511	259	10768	158	454120
1994–95	4555	32270	90536	65890	7417	3425	0	2933	49362	18332	67159	1019	13359	20	356277
1995–96	2904	20502	71241	67722	8818	1363	0	5502	54883	23516	74399	947	11622	613	344032
1996–97	2888	27474	127995	75238	4257	1097	0	2946	83902	56444	74710	537	10356	96	467939
1997–98	1786	39328	75138	34862	3019	336	0	1958	54083	49790	42345	170	11878	85	314778
1998–99	5393	27642	116859	46840	6055	1228	43	2453	37878	38437	50120	575	18297	182	352002
1999–00	5646	20093	118175	67181	6124	531	0	2543	21086	30147	69531	710	23205	—	364973
2000–01	7731	20557	187868	71461	9272	987	—	2303	16394	29298	90184	708	33517	1318	471598
2001–02	4290	18326	275534	70404	15355	1833	—	1477	38945	30431	78140	1039	12208	—	547983
2002–03	7428	16288	588238	177649	24217	1643	—	555	10071	22486	124008	598	7344	14	980538
2003–04	8480	25112	411826	171428	18959	3432	0	5384	16920	59889	83827	656	23050	0	828964
2004–05	5901	37056	433104	144177	13009	2326	0	2847	23575	41889	88152	1412	19785	247	813480
2005–06	1802	39742	1049147	128773	14562	1998	—	2213	3271	32419	45632	959	6374	—	1326894
2007–08	4970	13037	946596	166006	42838	307	—	1736	5067	43288	24200	1604	4375	45	1254069

*Economic value was determined by multiplying average pelt price by total harvest for a given species.

Species with missing values contributed to Utah's annual furbearer harvest but were not included in the economic value estimate due to missing average pelt price or harvest data. No data was available for 2006–07. From 2001 to 2005, average striped skunk pelt price was used to calculate all skunk (spotted and striped) economic value.

Economic value* (in dollars) of furbearer species in Utah's annual furbearer harvest, Utah 1982–2013 (cont.).

Trap year	Species														Total economic value (\$)
	Badger	Beaver	Bobcat	Coyote	Gray fox	Kit fox	Marten	Mink	Muskrat	Raccoon	Red fox	Ringtail	Skunk	Weasel	
2008–09	4996	15319	492186	75399	29816	791	—	1442	2988	14713	15676	631	7256	—	661214
2009–10	6458	22160	261073	98766	23047	483	—	3160	27148	35589	43366	1635	22895	458	546238
2010–11	5338	13421	369686	203226	19019	571	972	7170	41555	48575	64790	1173	18607	267	794368
2011–12	4435	16017	567920	230005	23177	1594	550	3333	60140	32162	96534	342	9823	114	1046146
2012–13	5225	46112	765710	227430	40152	5360	1462	16629	110710	87845	87380	971	14580	—	1409567
Average	4224	28872	332640	112331	18648	2573	464	4575	52578	29291	52688	813	10736	169	650463

*Economic value was determined by multiplying average pelt price by total harvest for a given species.

Species with missing values contributed to Utah's annual furbearer harvest but were not included in the economic value estimate due to missing average pelt price or harvest data.

HARVEST BY SPECIES

BADGER

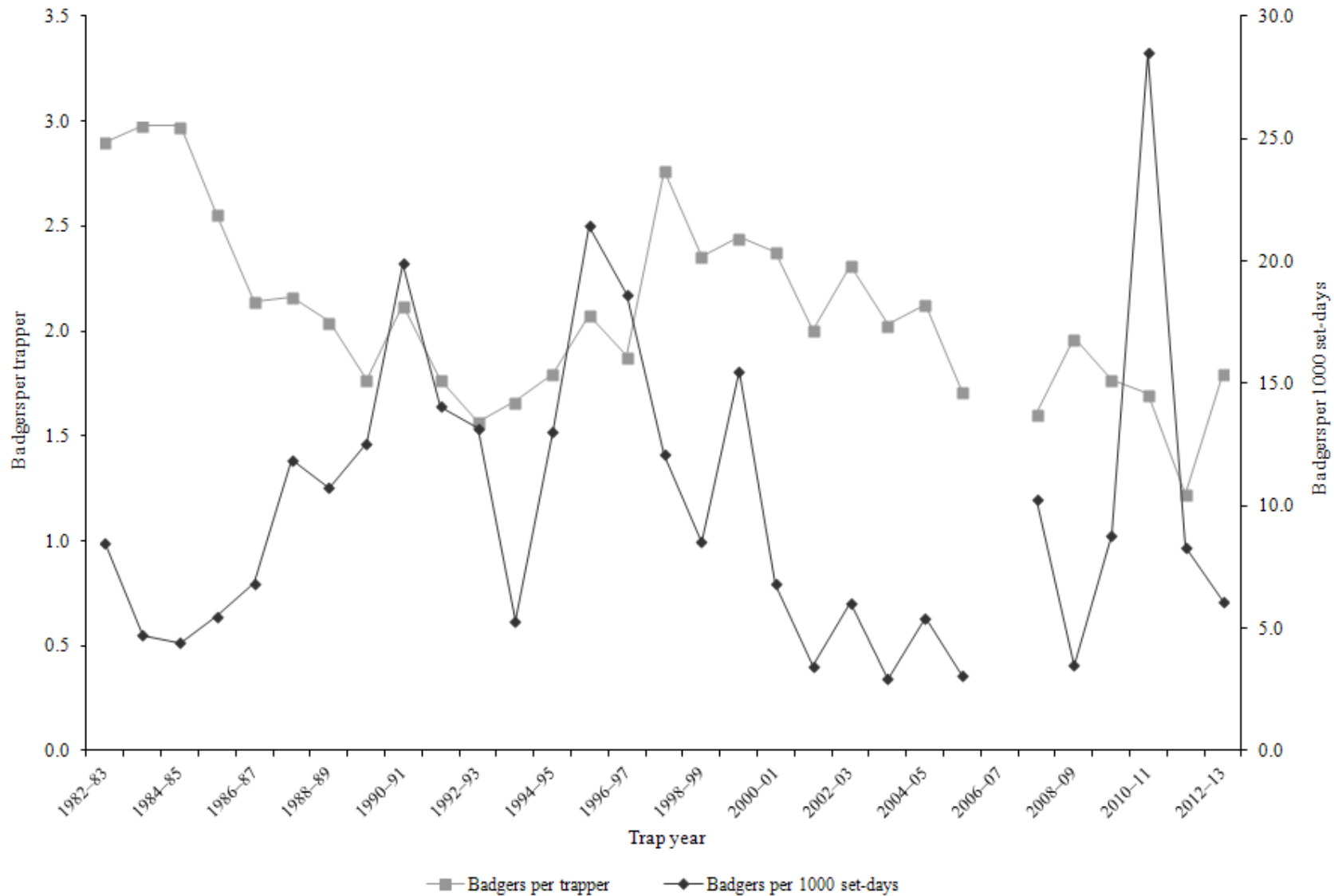
Statewide badger harvest statistics*, Utah 1982–2013.

Trap year	Trappers afield	Incidental harvest	Trap harvest	Hunt harvest	Set-days / badger	Badgers / 1000 set-days	Badgers / trapper	Pelt price (\$)
1982–83	250	—	725	—	118	8.5	2.9	8.20
1983–84	188	—	560	—	212	4.7	3.0	8.56
1984–85	225	—	670	—	227	4.4	3.0	10.14
1985–86	194	—	496	—	182	5.5	2.6	3.96
1986–87	198	—	424	—	146	6.8	2.1	7.64
1987–88	212	—	459	—	84	11.9	2.2	6.04
1988–89	204	—	417	—	93	10.7	2.0	4.66
1989–90	207	—	366	—	80	12.5	1.8	4.78
1990–91	81	—	172	—	50	19.9	2.1	7.27
1991–92	134	—	237	—	71	14.1	1.8	8.50
1992–93	148	—	232	—	76	13.2	1.6	9.95
1993–94	143	—	238	—	188	5.3	1.7	7.18
1994–95	182	—	327	—	77	13.0	1.8	13.93
1995–96	133	—	276	—	47	21.4	2.1	10.52
1996–97	118	—	222	—	54	18.7	1.9	13.01
1997–98	98	—	271	—	83	12.1	2.7	6.59
1998–99	135	—	318	—	117	8.5	2.4	16.96
1999–00	177	—	433	—	64	15.5	2.4	13.04
2000–01	189	—	450	—	147	6.8	2.4	17.18
2001–02	137	—	275	—	288	3.5	2.0	15.60
2002–03	234	—	541	—	165	6.0	2.3	13.73
2003–04	223	—	453	—	341	2.9	2.0	18.72
2004–05	203	—	432	—	184	5.4	2.1	13.66
2005–06	70	—	120	—	324	3.1	1.7	15.02
2006–07	187	—	—	—	—	—	—	18.07
2007–08	171	—	275	—	98	10.2	1.6	14.14
2008–09	146	—	287	—	282	3.5	2.0	17.41
2009–10	78	196	138	—	113	8.8	1.8	19.34
2010–11	115	115	194	—	35	28.5	1.7	17.27
2011–12	110	82	46	89	120	8.3	0.4	20.44
2012–13	99	147	117	38	163	6.1	1.2	17.36
Average	161	135	339	64	141	10.0	2.0	12.22

Prior to the 2005–06 season, harvest by hunting and trapping were not collected separately and trapping harvest estimates included harvest by both hunters and trappers. Trap harvest includes incidental harvest.

*Trappers and badgers per trapper include hunters and their harvest. Set-days per badger and badgers per 1000 set-days are based only on trapping activity, and do not include hunt harvest or hunter-days afield.

Statewide badger harvest trends, Utah 1982–2013.



BEAVER

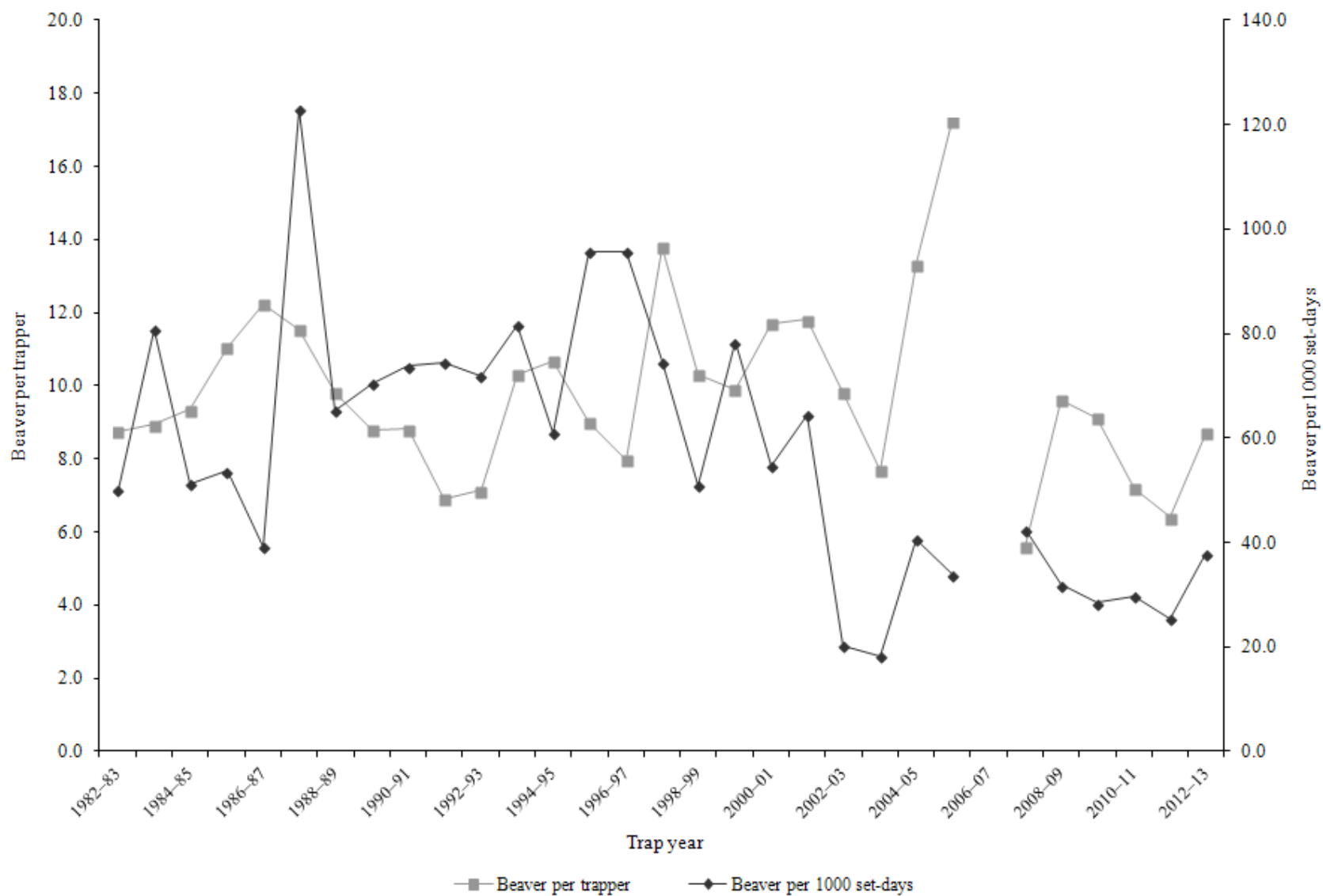
Statewide beaver harvest statistics*, Utah 1982–2013.

Trap year	Trappers afield	Incidental harvest	Trap harvest	Hunt harvest	Set-days / beaver	Beavers / 1000 set-days	Beavers / trapper	Pelt price (\$)
1982–83	181	—	1584	—	20	50.1	8.8	12.89
1983–84	200	—	1788	—	12	80.8	8.9	14.10
1984–85	285	—	2664	—	20	51.3	9.3	16.44
1985–86	293	—	3242	—	19	53.7	11.1	14.64
1986–87	338	—	4138	—	26	39.2	12.2	22.64
1987–88	409	—	4716	—	8	122.9	11.5	14.67
1988–89	277	—	2721	—	15	65.4	9.8	10.02
1989–90	390	—	3436	—	14	70.5	8.8	11.93
1990–91	176	—	1551	—	14	73.8	8.8	6.49
1991–92	216	—	1492	—	13	74.5	6.9	8.94
1992–93	134	—	956	—	14	71.9	7.1	7.74
1993–94	171	—	1761	—	12	81.6	10.3	9.59
1994–95	239	—	2551	—	16	61.0	10.7	12.65
1995–96	170	—	1530	—	10	95.7	9.0	13.40
1996–97	163	—	1299	—	10	95.7	8.0	21.15
1997–98	210	—	2896	—	13	74.6	13.8	13.58
1998–99	286	—	2950	—	20	51.0	10.3	9.37
1999–00	185	—	1830	—	13	78.4	9.9	10.98
2000–01	170	—	1992	—	18	54.7	11.7	10.32
2001–02	143	—	1689	—	16	64.5	11.8	10.85
2002–03	175	—	1720	—	49	20.3	9.8	9.47
2003–04	232	—	1781	—	55	18.2	7.7	14.10
2004–05	200	—	2664	—	25	40.7	13.3	13.91
2005–06	130	—	2239	—	29	33.9	17.2	17.75
2006–07	122	—	—	—	—	—	—	16.31
2007–08	133	—	745	—	24	42.5	5.6	17.50
2008–09	121	—	1165	—	31	31.9	9.6	13.15
2009–10	209	6	1904	—	35	28.5	9.1	11.60
2010–11	144	13	1039	—	34	29.8	7.2	12.76
2011–12	157	18	1008	—	39	25.4	6.4	15.61
2012–13	267	17	2245	14	26	37.9	8.4	20.26
Average	211	14	2110	14	22	57.3	9.8	13.38

Prior to the 2005–06 season, harvest by hunting and trapping were not collected separately and trapping harvest estimates included harvest by both hunters and trappers. Trap harvest includes incidental harvest.

*Trappers and beaver per trapper include hunters and their harvest. Set-days per beaver and beaver per 1000 set-days are based only on trapping activity, and do not include hunt harvest or hunter-days afield

Statewide beaver harvest trends, Utah 1982–2013.



Beaver trapping harvest statistics by county and ecoregion, Utah 2012–13.

County	n	Trappers afield	Trap harvest	Traps set	Trapping days	Set-days	Set-days / beaver	Beaver / 1000 set-days	Beaver / trapper
Beaver	0	0	—	—	—	—	—	—	—
Box Elder	2	7	24	48	106	1241	52	19.3	3.5
Iron	0	0	—	—	—	—	—	—	—
Juab	1	3	3	69	72	1440	420	2.4	1.0
Millard	0	0	—	—	—	—	—	—	—
Tooele	0	0	—	—	—	—	—	—	—
Great Basin totals	3	10	27	117	178	2680	98	10.2	2.7
Cache	8	27	199	199	555	6057	30	32.8	7.3
Davis	0	0	—	—	—	—	—	—	—
Morgan	1	3	72	41	41	494	7	145.8	21.0
Piute	1	3	213	51	206	3085	15	68.9	62.0
Rich	3	10	41	45	308	1337	33	30.8	4.0
Salt Lake	4	14	110	82	524	2629	24	41.7	8.0
Sanpete	1	3	7	21	72	432	63	15.9	2.0
Sevier	1	3	17	27	10	82	5	208.3	5.0
Summit	6	21	120	137	699	4298	36	27.9	5.8
Utah	14	48	339	267	1553	9080	27	37.4	7.1
Wasatch	5	17	182	202	336	3856	21	47.1	10.6
Weber	5	17	75	127	425	2536	34	29.7	4.4
Rocky Mountain totals	49	168	1374	1200	4730	33886	25	40.6	8.2
Daggett	0	0	—	—	—	—	—	—	—
Duchesne	7	24	394	237	1025	11702	30	33.7	16.4
Uintah	7	24	165	120	476	2410	15	68.3	6.9
Uintah Basin totals	14	48	559	356	1501	14112	25	39.6	11.6
Carbon	1	3	10	7	17	34	3	300.0	3.0
Emery	5	17	134	86	1020	5587	42	23.9	7.8
Garfield	0	0	—	—	—	—	—	—	—
Grand	1	3	3	7	24	48	14	71.4	1.0
Kane	0	0	—	—	—	—	—	—	—
San Juan	0	0	—	—	—	—	—	—	—
Washington	1	3	117	45	206	2674	23	43.6	34.0
Wayne	2	7	17	17	27	79	5	217.4	2.5
Colorado Plateau totals	10	34	281	161	1294	8422	30	33.4	8.2
Unknown	1	3	3	10	48	144	42	23.8	1.0
Statewide totals*	75	257	2245	1844	7752	59244	26	37.9	8.7

*Statewide totals for sample size and trappers afield are not totals of the columns because trappers trapped multiple counties.

BOBCAT

Statewide bobcat trapping harvest statistics, Utah 1982–2013.

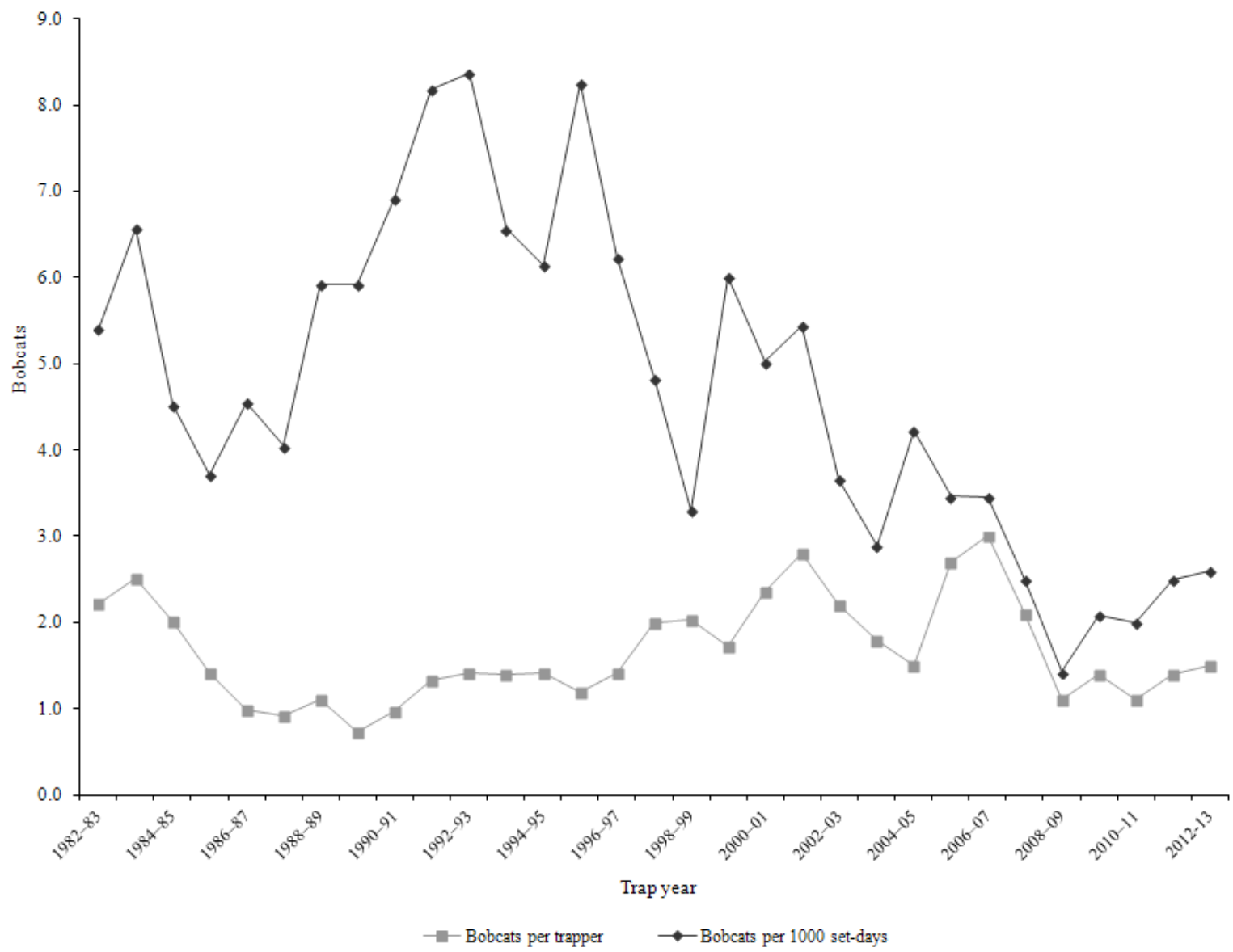
Trap year	Trappers afield	Trap harvest	Set-days	Set-days / bobcat	Bobcats / 1000 set-days	Bobcats / trapper	Pelt price (\$)
1982–83	1145	2540	469979	185	5.4	2.2	171.00
1983–84	1050	2640	401841	152	6.6	2.5	189.00
1984–85	1253	2532	559480	221	4.5	2.0	202.00
1985–86	1083	1530	411493	269	3.7	1.4	197.00
1986–87	1036	1024	224778	220	4.6	1.0	309.00
1987–88	1108	1023	252680	247	4.0	0.9	245.00
1988–89	941	1042	175990	169	5.9	1.1	221.00
1989–90	1167	843	142360	169	5.9	0.7	102.00
1990–91	542	527	76218	145	6.9	1.0	87.00
1991–92	726	968	118293	122	8.2	1.3	104.00
1992–93	827	1171	139949	120	8.4	1.4	90.00
1993–94	900	1256	191367	152	6.6	1.4	118.60
1994–95	914	1293	210522	163	6.1	1.4	70.02
1995–96	749	896	108594	121	8.3	1.2	79.51
1996–97	615	866	138899	160	6.2	1.4	147.80
1997–98	619	1234	255147	207	4.8	2.0	60.89
1998–99	1031	2092	633774	303	3.3	2.0	55.86
1999–00	828	1430	238152	167	6.0	1.7	82.64
2000–01	852	2008	399609	199	5.0	2.4	93.56
2001–02	666	1866	342678	184	5.4	2.8	147.66
2002–03	984	2176	593692	273	3.7	2.2	270.33
2003–04	1133	2027	701383	346	2.9	1.8	203.17
2004–05	1300	1954	462019	236	4.2	1.5	221.65
2005–06	979	2625	757380	289	3.5	2.7	358.56
2006–07	1017	3037	877870	289	3.5	3.0	197.53
2007–08	985	2091	836519	400	2.5	2.1	388.43
2008–09	1630	1796	1258813	701	1.4	1.1	238.69
2009–10	717	1017	488709	481	2.1	1.4	223.71
2010–11	771	846	416474	492	2.0	1.1	368.95
2011–12	755	1094	437912	400	2.5	1.4	456.16
2012–13	836	1214	475902	392	2.6	1.5	560.96
Average	941	1570	412854	257	4.7	1.7	201.99

Prior to the 2005–06 season, harvest by hunting and trapping were not collected separately and trapping harvest estimates included harvest by both hunters and trappers. Trap harvest includes incidental harvest.

Statewide bobcat hunting harvest statistics, Utah 2005–2013.

Trap year	Hunters afield	Hunt harvest	Hunter-days afield	Hunter-days / bobcat	Bobcats / hunter
2005–06	612	301	8194	27	0.5
2006–07	440	340	10408	31	0.8
2007–08	557	346	10089	29	0.6
2008–09	438	266	7360	28	0.6
2009–10	370	150	5253	35	0.4
2010–11	355	156	5888	38	0.4
2011–12	329	151	4146	28	0.5
2012–13	206	151	2739	18	0.7
Average	413	233	6760	29	0.6

Statewide bobcat trapping harvest trends, Utah 1982–2013.



Bobcat trapping harvest statistics by county and ecoregion, Utah 2012–13.

County	n	Trappers afield	Trap harvest**	Traps set	Trapping days	Set-days	Set-days / bobcat	Bobcats / 1000 set-days	Bobcats / trapper
Beaver	20	84	81	3416	1000	42537	525	1.9	1.0
Box Elder	15	63	82	2114	1248	44858	547	1.8	1.3
Iron	19	80	109	2074	669	19315	177	5.6	1.4
Juab	8	34	33	710	488	10210	309	3.2	1.0
Millard	7	29	31	870	269	8747	282	3.5	1.1
Tooele	9	38	20	799	673	18595	930	1.1	0.5
Great Basin totals	78	328	356	9983	4347	144262	405	2.5	1.1
Cache	9	38	2	1223	761	42298	21149	0.0	0.1
Davis	1	4	1	4	—	—	—	—	0.3
Morgan	1	4	13	130	21	652	50	19.9	3.3
Piute	3	13	33	290	240	5864	178	5.6	2.5
Rich	5	21	20	841	185	8827	441	2.3	1.0
Salt Lake	2	8	4	378	139	6368	1592	0.6	0.5
Sanpete	8	34	27	1253	395	17784	659	1.5	0.8
Sevier	11	46	77	1345	609	11095	144	6.9	1.7
Summit	4	17	19	559	160	5052	266	3.8	1.1
Utah	14	59	23	995	370	7315	318	3.1	0.4
Wasatch	1	4	7	29	25	177	25	39.5	1.8
Weber	3	13	5	517	84	4376	875	1.1	0.4
Rocky Mountain totals	62	261	231	7564	2989	109807	475	2.1	0.9
Daggett	3	13	12	273	63	1366	114	8.8	0.9
Duchesne	9	38	48	1442	584	24694	514	1.9	1.3
Uintah	9	38	51	1361	500	19514	383	2.6	1.3
Uintah Basin totals	21	88	111	3076	1148	45575	411	2.4	1.3
Carbon	8	34	45	1101	319	12719	283	3.5	1.3
Emery	12	50	39	2364	890	40774	1045	1.0	0.8
Garfield	12	50	66	1736	702	31056	471	2.1	1.3
Grand	5	21	17	311	282	6217	366	2.7	0.8
Kane	7	29	65	787	765	20690	318	3.1	2.2
San Juan	16	67	127	1549	921	20666	163	6.1	1.9
Washington	17	71	139	1908	757	26058	187	5.3	2.0
Wayne	6	25	18	1035	542	18079	1004	1.0	0.7
Colorado Plateau totals	83	349	516	10792	5177	176259	342	2.9	1.5
Unknown	2	8	0	118	—	—	—	—	0.0
Statewide totals*	199	836	1214	31533	13660	475902	392	2.6	1.5

*Statewide totals for sample size and trappers afield are not totals of the columns because trappers trapped multiple counties.

**Total harvest numbers are from pelt check-in, while numbers of trappers afield and effort are determined from harvest survey.

Bobcat hunting harvest statistics by county and ecoregion, Utah 2012–13.

County	n	Hunters afield	Hunt harvest**	Hunter-days afield	Hunter-days / bobcat	Bobcats / hunter
Beaver	2	8	0	29	—	0.0
Box Elder	5	21	9	223	24.8	0.4
Iron	2	8	12	55	4.6	1.5
Juab	6	25	7	319	45.6	0.3
Millard	4	17	7	50	7.1	0.4
Tooele	9	38	5	231	46.2	0.1
Great Basin totals	28	118	40	907	22.7	0.3
Cache	4	17	11	416	37.8	0.6
Davis	0	0	1	—	—	—
Morgan	1	4	4	21	5.3	1.0
Piute	3	13	0	38	—	0.0
Rich	0	0	6	—	—	—
Salt Lake	0	0	2	—	—	—
Sanpete	2	8	2	315	157.5	0.3
Sevier	2	8	9	71	7.9	1.1
Summit	4	17	2	71	35.5	0.1
Utah	7	29	6	240	40.0	0.2
Wasatch	0	0	8	—	—	—
Weber	2	8	6	29	4.8	0.8
Rocky Mountain totals	25	105	57	1201	21.1	0.5
Daggett	0	0	2	—	—	—
Duchesne	2	8	5	38	7.6	0.6
Uintah	2	8	4	17	4.3	0.5
Uintah Basin totals	4	17	11	55	5.0	0.6
Carbon	3	13	10	21	2.1	0.8
Emery	4	17	3	193	64.3	0.2
Garfield	3	13	8	76	9.5	0.6
Grand	3	13	1	67	67.0	0.1
Kane	0	0	1	—	—	—
San Juan	6	25	16	143	8.9	0.6
Washington	3	13	2	76	38.0	0.2
Wayne	0	0	2	0	0.0	—
Colorado Plateau totals	22	92	43	576	13.4	0.5
Unknown	0	0	—	—	—	—
Statewide totals*	49	206	151	2739	18.1	0.7

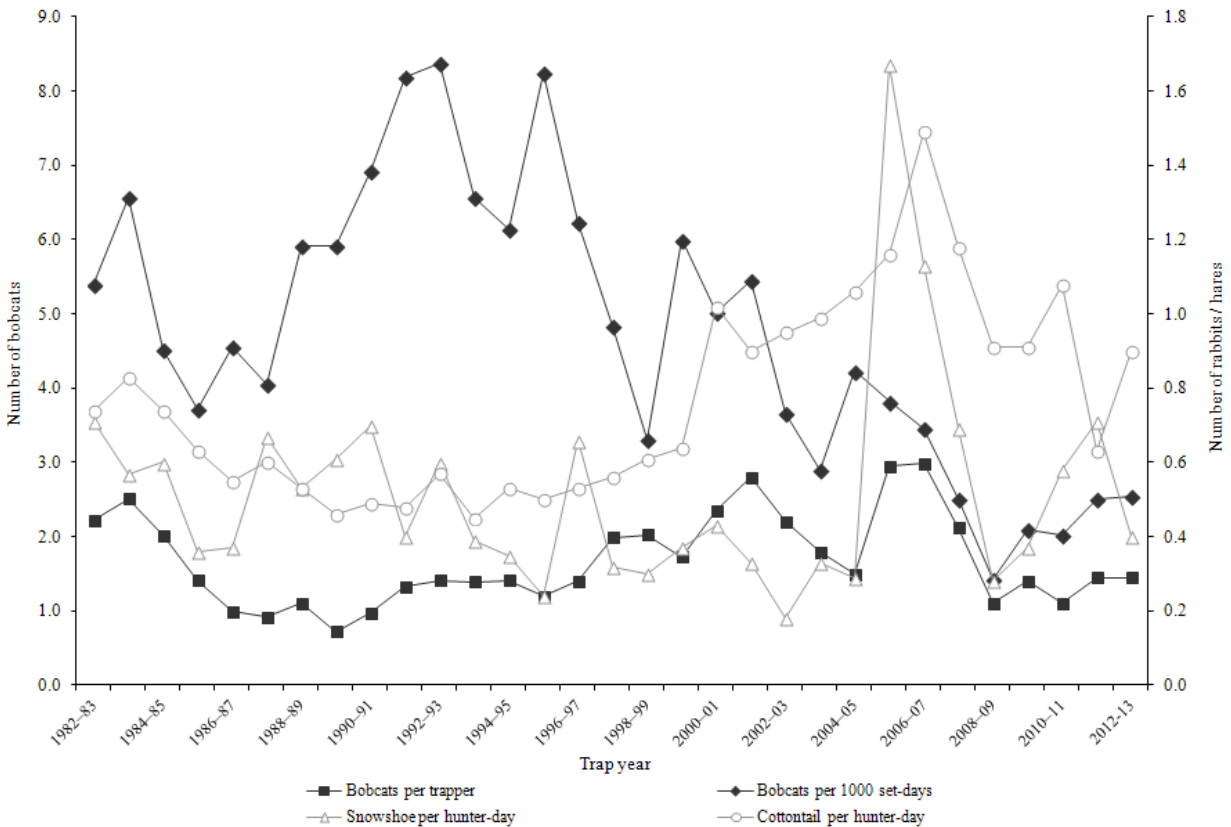
*Statewide totals for sample size and hunters afield are not totals of the columns because hunters hunted multiple counties.

**Total harvest numbers are from pelt check-in, while numbers of hunters afield and effort are determined from harvest survey.

Prey index

Lagomorph densities are generally considered to be a good indicator of bobcat recruitment and survival because high lagomorph populations provide an essential prey base for dispersing bobcats. When lagomorph populations are high or increasing, the bobcat population has also increased or at least remained stable. Thus, low populations of lagomorphs will reduce the likelihood of younger bobcats surviving to the next year. Cottontail rabbit and snowshoe hare data are taken from the Utah Upland Game Annual Report 2012–13 (2012–13 seasons).

Relationships in harvest statistics between bobcat and prey, Utah 1982–2013.



Population trends

Bobcat harvest age and sex ratios, Utah 1985–2013.

Trap year	Kittens / adult female	Kittens / adult	Male kittens / female kittens	Juveniles / adult	Juv. males / juv. females	Proportion juveniles in harvest	Proportion females in harvest	Males / females
1985–86	0.5	0.2	1.0	—	—	—	—	1.2
1986–87	0.7	0.3	0.9	—	—	—	—	1.1
1987–88	1.2	0.5	1.0	—	—	—	—	1.1
1988–89	1.1	0.4	1.1	—	—	—	—	1.3
1989–90	0.8	0.3	1.0	—	—	—	—	1.4
1990–91	0.8	0.3	0.6	—	—	—	—	1.2
1991–92	0.9	0.7	1.3	—	—	—	—	1.5
1992–93	0.9	1.0	1.2	—	—	—	—	1.4
1993–94	1.6	0.6	1.0	—	—	—	—	1.3
1994–95	0.6	0.6	1.1	0.6	1.1	0.36	0.44	1.3
1995–96	1.4	0.5	0.7	0.5	1.0	0.35	0.44	1.3
1996–97	1.9	0.7	1.1	0.7	1.1	0.41	0.41	1.4
1997–98	1.2	0.4	0.9	0.4	0.9	0.30	0.42	1.4
1998–99	2.1	0.8	1.1	—	—	—	—	1.3
1999–00	0.8	0.3	1.0	1.0	1.4	0.50	0.39	1.6
2000–01	0.7	0.3	1.1	0.9	1.3	0.47	0.39	1.6
2001–02	0.4	0.2	1.0	0.6	1.2	0.38	0.41	1.4
2002–03	0.4	0.2	0.9	0.4	1.0	0.28	0.45	1.2
2003–04	0.6	0.3	0.9	0.5	1.0	0.31	0.47	1.1
2004–05	0.8	0.3	0.8	1.2	1.1	0.55	0.44	1.3
2005–06	5.8	2.5	1.4	2.5	1.4	0.72	0.43	1.4
2006–07	4.1	1.5	1.4	1.5	1.4	0.60	0.43	1.3
2007–08	3.0	1.3	1.1	1.4	1.1	0.56	0.43	1.3
2008–09	0.4	0.2	0.8	0.7	1.0	0.42	0.45	1.2
2009–10	0.7	0.3	1.0	0.6	1.2	0.38	0.47	1.1
2010–11	0.6	0.2	1.1	0.5	1.2	0.31	0.43	1.4
2011–12	0.8	0.3	1.1	0.5	1.2	0.35	0.45	1.2
2012–13	0.6	0.3	0.9	0.5	0.9	0.35	0.48	1.1
Average	1.3	0.6	1.0	0.8	1.1	0.42	0.43	1.3

In annual reports prior to 2005–06, the "juvenile" age category referred only to kittens (age 0.5) while "adults" included all bobcats age 1.5 and older. Beginning with the 2005–06 annual report, the term "juvenile" now refers to kittens and yearlings (ages 0.5–1.5), while "adult" includes all bobcats age 2.5 and older.

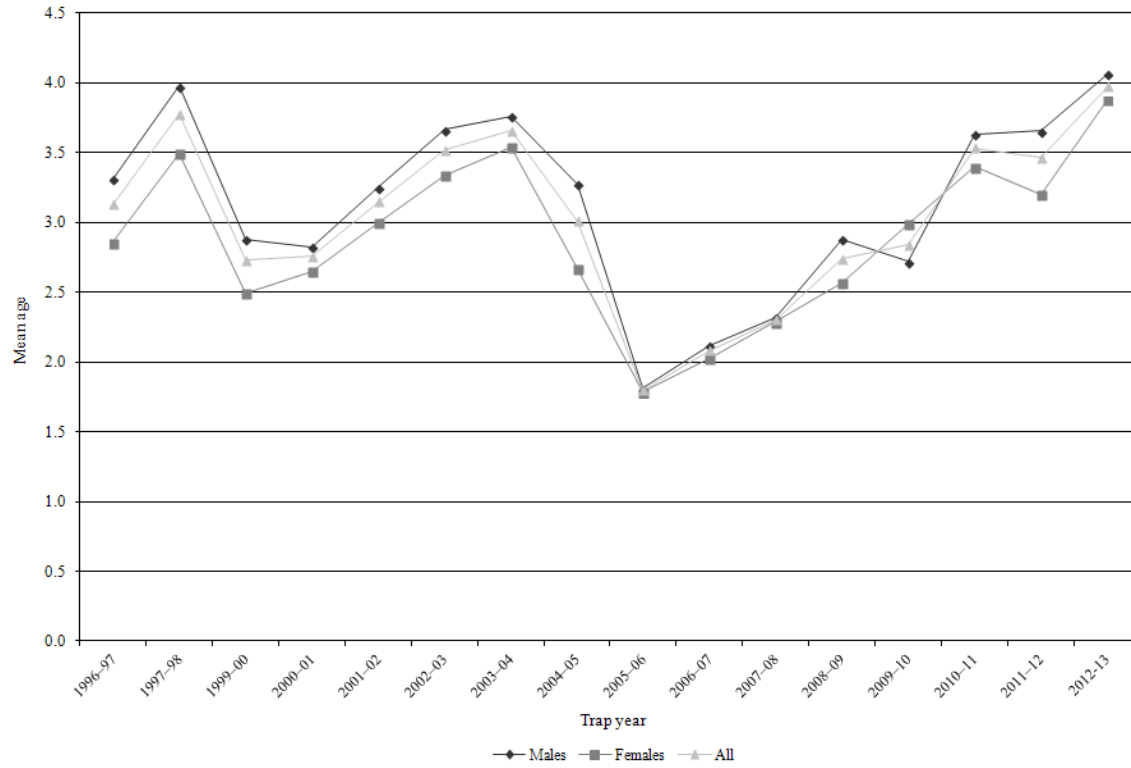
Adult bobcat survival (from Chapman-Robson estimator), Utah 1985–2013.

Trap year	Survival (%)	95% confidence interval	Chi-square value, degrees of freedom
1985–86	63	60–65	13.2, 9df
1986–87	63	60–65	34.1, 9df
1987–88	65	61–68	19.9, 9df
1988–89	64	60–68	17.3, 8df
1989–90	67	63–71	19.4, 8df
1990–91	58	53–62	28.5, 12df
1991–92	58	55–60	47.9, 14df
1992–93	59	56–63	19.9, 12df
1993–94	54	52–57	34.2, 11df
1994–95	57	54–59	17.2, 14df
1995–96	64	61–66	40.0, 11df
1996–97	68	65–70	23.4, 12df
1997–98	71	69–74	19.1, 14df
1998–99	71	70–73	35.2, 13df
1999–00	66	64–68	41.0, 15df
2000–01	64	62–66	86.0, 11df
2001–02	65	63–67	87.3, 14df
2002–03	67	65–68	175.5, 13df
2003–04	71	70–72	245.6, 12df
2004–05	74	73–76	83.9, 15df
2005–06	68	65–70	15.7, 12df
2006–07	53	48–58	41.9, 9df
2007–08	58	54–62	63.6, 12df
2008–09	57	54–61	64.5, 14df
2009–10	59	56–62	60.1, 12df
2010–11	69	66–71	90.0, 13df
2011–12	70	66–73	22.7, 13df
2012–13	75	72–78	87.2, 11df
Average	64	—	—

*Errors were found in the past calculations of chi-square values and were corrected in this report.

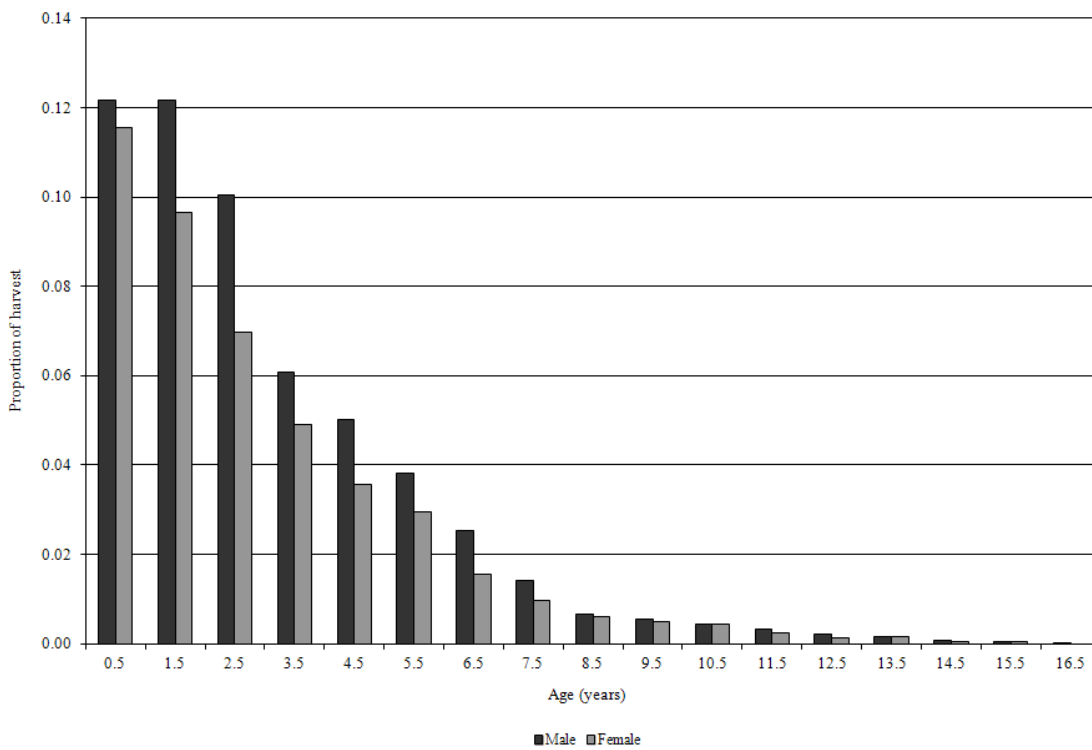
Age structure

Average age of harvested bobcats, Utah 1995–2013.

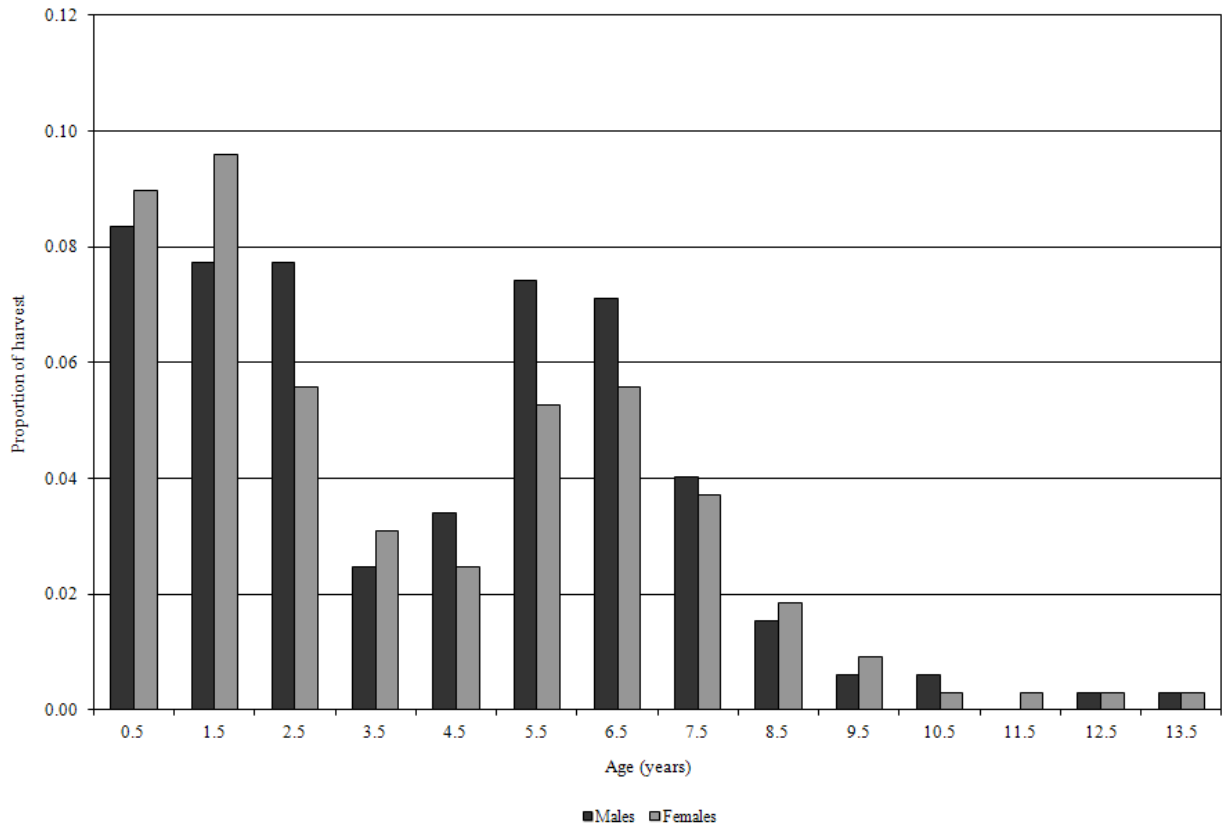


*Excludes age structure data from the 1998–99 trap season.

Average number of bobcats harvested by age category, Utah 2003–2013.



Age structure of harvested bobcats, Utah 2012–13.



COYOTE

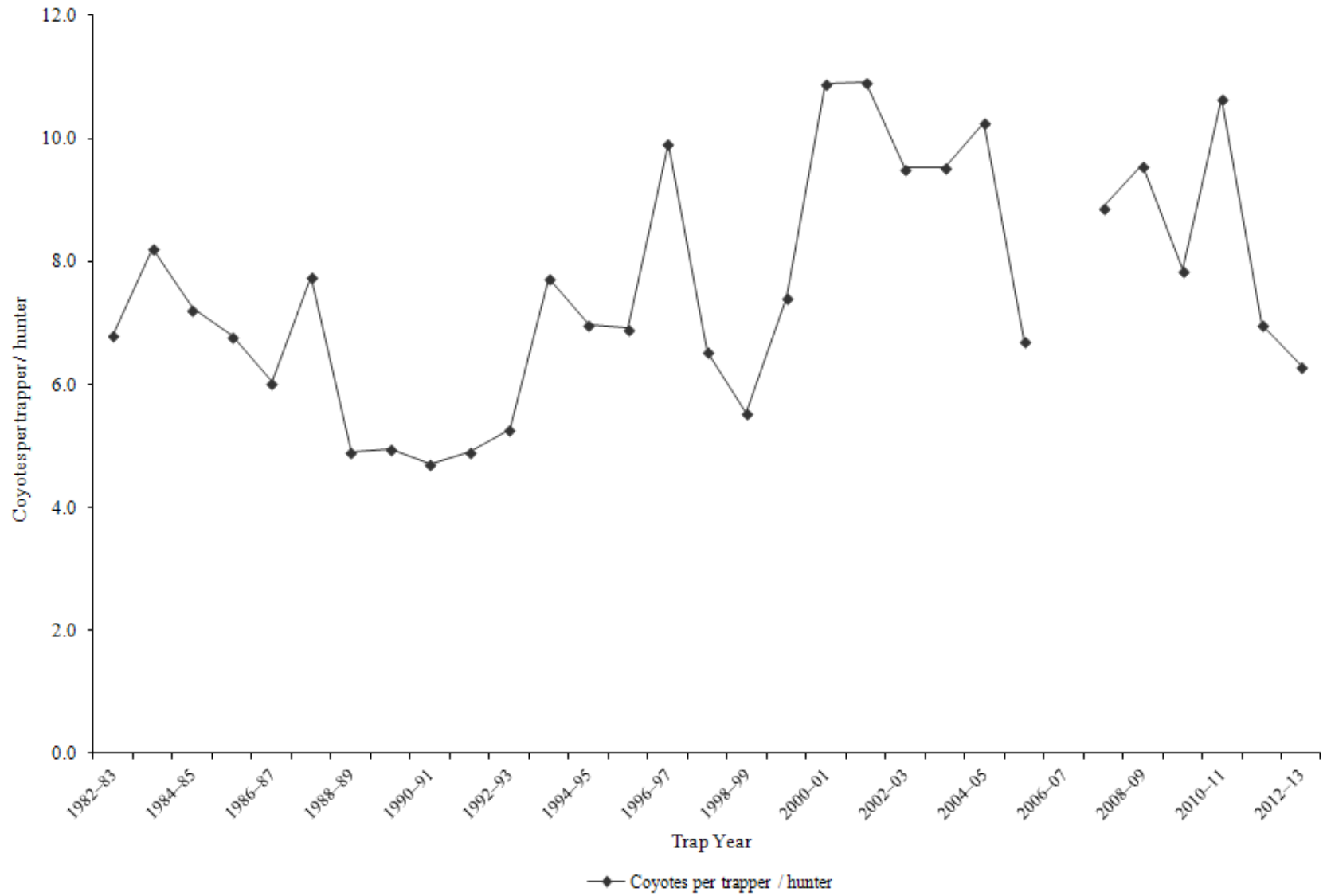
Statewide coyote harvest statistics, Utah 1982–2013.

Trap year	Trappers / hunters afield	Wildlife Services harvest	Incidental harvest	Trap harvest	Hunt harvest	Coyotes per trapper / hunter*	Pelt price (\$)
1982–83	841	4130	—	5738	—	6.8	35.42
1983–84	715	5063	—	5878	—	8.2	25.92
1984–85	828	5427	—	5991	—	7.2	32.35
1985–86	714	5045	—	4851	—	6.8	19.65
1986–87	819	4116	—	4947	—	6.0	33.64
1987–88	893	4338	—	6919	—	7.7	15.55
1988–89	652	4853	—	3200	—	4.9	8.47
1989–90	671	5168	—	3331	—	5.0	8.68
1990–91	389	4444	—	1831	—	4.7	11.41
1991–92	664	4347	—	3255	—	4.9	20.00
1992–93	695	4932	—	3666	—	5.3	15.75
1993–94	679	5827	—	5247	—	7.7	24.58
1994–95	754	3893	—	5267	—	7.0	12.51
1995–96	632	4165	—	4372	—	6.9	15.49
1996–97	405	4484	—	4017	—	9.9	18.73
1997–98	494	4169	—	3228	—	6.5	10.80
1998–99	782	3464	—	4337	—	5.5	10.80
1999–00	473	4534	—	3510	—	7.4	19.14
2000–01	456	4275	—	4966	—	10.9	14.39
2001–02	399	3874	—	4354	—	10.9	16.17
2002–03	572	3394	—	5446	—	9.5	32.62
2003–04	699	3897	—	6660	—	9.5	25.74
2004–05	699	4125	—	7173	—	10.3	20.10
2005–06	630	4820	328	1190	3039	6.7	30.45
2006–07	830	5041	—	—	—	—	26.37
2007–08	859	5618	821	4055	3582	8.9	21.74
2008–09	726	3909	1020	3963	2982	9.6	10.86
2009–10	781	3808	531	3188	2955	7.9	14.80
2010–11	736	4081	292	4356	3480	10.6	25.00
2011–12	705	3444	374	3054	1868	7.0	43.43
2012–13	881	3349	192	3269	2288	6.3	39.56
Average	680	4388	508	4375	2885	7.6	21.29

Prior to the 2005–06 season, harvest by hunting and trapping were not collected separately and trap harvest estimates included all harvest by both hunting and trapping.

*Coyotes per trapper / hunter does not include Wildlife Services harvest.

Statewide coyote harvest trends, Utah 1982–2013.



Coyote trapping harvest statistics by county and ecoregion, Utah 2012–13.

County	n	Trappers afield	Trap harvest	Traps set	Trapping days	Set-days	Set-days / coyote	Coyotes / 1000 set-days	Coyotes / trapper
Beaver	17	58	237	737	3157	49639	210	4.8	4.1
Box Elder	14	48	466	1638	2825	98448	211	4.7	9.7
Iron	11	38	243	391	1875	23137	95	10.5	6.5
Juab	8	27	74	329	874	12034	162	6.2	2.7
Millard	6	21	65	312	915	13498	207	4.8	3.2
Tooele	14	48	216	668	1457	30067	139	7.2	4.5
Great Basin totals	70	240	1301	4075	11103	226824	174	5.7	5.4
Cache	10	34	96	836	2125	61509	641	1.6	2.8
Davis	0	0	—	—	—	—	—	—	—
Morgan	1	3	0	41	62	740	—	0.0	0.0
Piute	3	10	41	134	867	9597	233	4.3	4.0
Rich	5	17	171	319	1594	30643	179	5.6	10.0
Salt Lake	1	3	21	51	274	4113	200	5.0	6.0
Sanpete	4	14	0	192	1265	19586	—	0.0	0.0
Sevier	5	17	41	106	761	4175	102	9.9	2.4
Summit	2	7	7	21	27	69	10	100.0	1.0
Utah	12	41	51	295	1096	7952	155	6.5	1.3
Wasatch	4	14	7	55	302	1207	176	5.7	0.5
Weber	2	7	21	147	576	20751	1009	1.0	3.0
Rocky Mountain totals	49	168	456	2197	8949	160342	352	2.8	2.7
Daggett	0	0	—	—	—	—	—	—	—
Duchesne	7	24	137	363	402	3861	28	35.5	5.7
Uintah	7	24	151	545	792	19562	130	7.7	6.3
Uintah Basin totals	14	48	288	908	1194	23423	81	12.3	6.0
Carbon	4	14	17	72	86	514	30	33.3	1.3
Emery	11	38	89	353	1313	7609	85	11.7	2.4
Garfield	10	34	144	459	1452	25185	175	5.7	4.2
Grand	4	14	31	185	411	5827	189	5.3	2.3
Kane	2	7	3	110	439	7404	2160	0.5	0.5
San Juan	10	34	552	586	1073	23202	42	23.8	16.1
Washington	8	27	247	507	2074	83868	340	2.9	9.0
Wayne	9	31	141	624	2321	40757	290	3.4	4.6
Colorado Plateau totals	58	199	1224	2896	9167	194366	159	6.3	6.2
Unknown	0	0	—	—	—	—	—	—	—
Statewide totals*	159	545	3269	10077	30412	604955	185	5.4	6.0

*Statewide totals for sample size and trappers afield are not totals of the columns because trappers trapped multiple counties.

Coyote hunting harvest statistics by county and ecoregion, Utah 2012–13.

County	n	Hunters afield	Hunt harvest	Hunter-days afield	Hunter-days / coyote	Coyotes / hunter
Beaver	10	34	103	309	3.0	3.0
Box Elder	24	82	302	1279	4.2	3.7
Iron	14	48	154	439	2.8	3.2
Juab	13	45	110	332	3.0	2.5
Millard	11	38	79	254	3.2	2.1
Tooele	19	65	151	713	4.7	2.3
Great Basin totals	91	312	898	3325	3.7	2.9
Cache	11	38	72	315	4.4	1.9
Davis	0	0	—	—	—	—
Morgan	3	10	17	48	2.8	1.7
Piute	3	10	3	45	13.0	0.3
Rich	4	14	27	41	1.5	2.0
Salt Lake	1	3	10	17	1.7	3.0
Sanpete	4	14	41	130	3.2	3.0
Sevier	6	21	51	207	4.0	2.5
Summit	8	27	195	250	1.3	7.1
Utah	11	38	55	254	4.6	1.5
Wasatch	3	10	0	82	—	0.0
Weber	5	17	31	254	8.2	1.8
Rocky Mountain totals	59	202	504	1644	3.3	2.5
Daggett	1	3	147	103	0.7	43.0
Duchesne	5	17	21	69	3.3	1.2
Uintah	11	38	34	343	10.1	0.9
Uintah Basin totals	17	58	202	514	2.5	3.5
Carbon	11	38	254	682	2.7	6.7
Emery	13	45	117	708	6.1	2.6
Garfield	7	24	36	403	11.2	1.5
Grand	6	21	58	134	2.3	2.8
Kane	3	10	0	250	—	0.0
San Juan	7	24	99	140	1.4	4.1
Washington	12	41	89	548	6.2	2.2
Wayne	8	27	27	192	7.0	1.0
Colorado Plateau totals	67	230	680	3057	4.5	3.0
Unknown	4	14	3	1156	337.3	0.3
Statewide totals*	151	518	2288	9696	4.2	4.4

*Statewide totals for sample size and hunters afield are not totals of the columns because hunters hunted multiple counties.

GRAY FOX

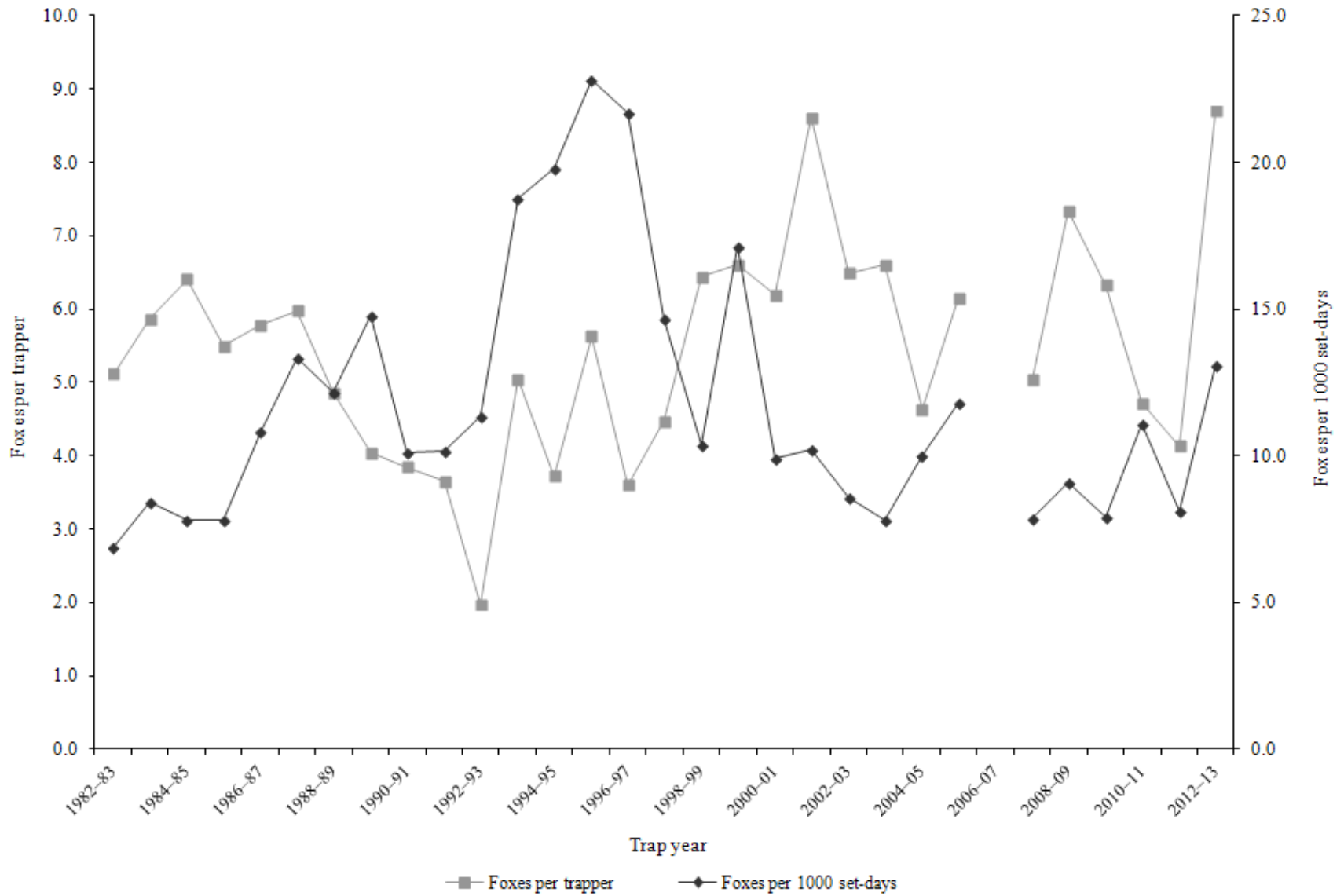
Statewide gray fox harvest statistics*, Utah 1982–2013.

Trap year	Trappers afield	Incidental harvest	Trap harvest	Hunt harvest	Set-days / fox	Fox / 1000 set-days	Fox / trapper	Pelt price (\$)
1982–83	263	—	1346	—	145	6.9	5.1	27.75
1983–84	233	—	1367	—	119	8.4	5.9	25.13
1984–85	305	—	1954	—	128	7.8	6.4	24.64
1985–86	256	—	1407	—	128	7.8	5.5	15.03
1986–87	252	—	1457	—	92	10.8	5.8	25.29
1987–88	273	—	1633	—	75	13.4	6.0	21.91
1988–89	226	—	1099	—	82	12.2	4.9	13.50
1989–90	233	—	941	—	68	14.8	4.0	6.19
1990–91	65	—	250	—	99	10.1	3.8	8.24
1991–92	110	—	402	—	98	10.2	3.7	6.87
1992–93	214	—	422	—	88	11.4	2.0	7.08
1993–94	136	—	687	—	53	18.8	5.1	12.00
1994–95	207	—	771	—	51	19.8	3.7	9.62
1995–96	147	—	828	—	44	22.8	5.6	10.65
1996–97	102	—	367	—	46	21.7	3.6	11.60
1997–98	87	—	389	—	68	14.7	4.5	7.76
1998–99	135	—	870	—	96	10.4	6.4	6.96
1999–00	140	—	925	—	58	17.1	6.6	6.62
2000–01	187	—	1159	—	101	9.9	6.2	8.00
2001–02	154	—	1326	—	98	10.2	8.6	11.58
2002–03	299	—	1942	—	116	8.6	6.5	12.47
2003–04	265	—	1749	—	128	7.8	6.6	10.84
2004–05	203	—	942	—	100	10.0	4.6	13.81
2005–06	98	—	603	—	85	11.8	6.2	24.15
2006–07	252	—	—	—	—	—	—	37.25
2007–08	217	—	1093	—	127	7.9	5.0	39.19
2008–09	238	—	1747	—	110	9.1	7.3	17.07
2009–10	163	361	1031	—	126	7.9	6.3	16.56
2010–11	138	292	651	—	90	11.1	4.7	20.97
2011–12	125	485	474	43	124	8.1	4.1	23.13
2012–13	130	216	1069	3	77	13.1	8.2	31.15
Average	189	339	1030	23	94	11.8	5.4	16.55

Prior to the 2005–06 season, harvest by hunting and trapping were not collected separately and trapping harvest estimates included harvest by both hunters and trappers. Trap harvest includes incidental harvest.

*Trappers and fox per trapper include hunters and their harvest. Set-days per fox and fox per 1000 set-days are based only on trapping activity, and do not include hunt harvest or hunter-days afield.

Statewide gray fox harvest trends, Utah 1982–2013.



Gray fox trapping harvest statistics by county and ecoregion, Utah 2012–13.

County	n	Trappers afield	Trap harvest	Traps set	Trapping days	Set-days	Set-days / fox	Fox / 1000 set-days	Fox / trapper
Beaver	4	14	158	274	665	15020	95	10.5	11.5
Box Elder	0	0	—	—	—	—	—	—	—
Iron	6	21	58	110	535	2255	39	25.8	2.8
Juab	0	0	—	—	—	—	—	—	—
Millard	0	0	—	—	—	—	—	—	—
Tooele	0	0	—	—	—	—	—	—	—
Great Basin totals	10	34	216	384	1200	17275	80	12.5	6.3
Cache	0	0	—	—	—	—	—	—	—
Davis	0	0	—	—	—	—	—	—	—
Morgan	0	0	—	—	—	—	—	—	—
Piute	1	3	17	27	206	1645	96	10.4	5.0
Rich	0	0	—	—	—	—	—	—	—
Salt Lake	0	0	—	—	—	—	—	—	—
Sanpete	0	0	—	—	—	—	—	—	—
Sevier	0	0	—	—	—	—	—	—	—
Summit	1	3	0	21	308	1851	—	0.0	0.0
Utah	0	0	—	—	—	—	—	—	—
Wasatch	0	0	—	—	—	—	—	—	—
Weber	0	0	—	—	—	—	—	—	—
Rocky Mountain totals	2	7	17	48	514	3496	204	4.9	2.5
Daggett	0	0	—	—	—	—	—	—	—
Duchesne	1	3	7	69	0	0	0	—	2.0
Uintah	1	3	0	21	17	103	—	0.0	0.0
Uintah Basin totals	2	7	7	89	17	103	15	66.7	1.0
Carbon	0	0	—	—	—	—	—	—	—
Emery	1	3	3	34	206	2057	600	1.7	1.0
Garfield	3	10	34	99	720	8535	249	4.0	3.3
Grand	3	10	21	96	171	1714	83	12.0	2.0
Kane	0	0	—	—	—	—	—	—	—
San Juan	7	24	432	590	847	18492	43	23.4	18.0
Washington	10	34	302	487	1251	21766	72	13.9	8.8
Wayne	2	7	38	103	446	8398	223	4.5	5.5
Colorado Plateau totals	26	89	830	1409	3640	60961	73	13.6	9.3
Unknown	0	0	—	—	—	—	—	—	—
Statewide totals*	36	123	1069	1930	5371	81835	77	13.1	8.7

*Statewide totals for sample size and trappers afield are not totals of the columns because trappers trapped multiple counties.

KIT FOX

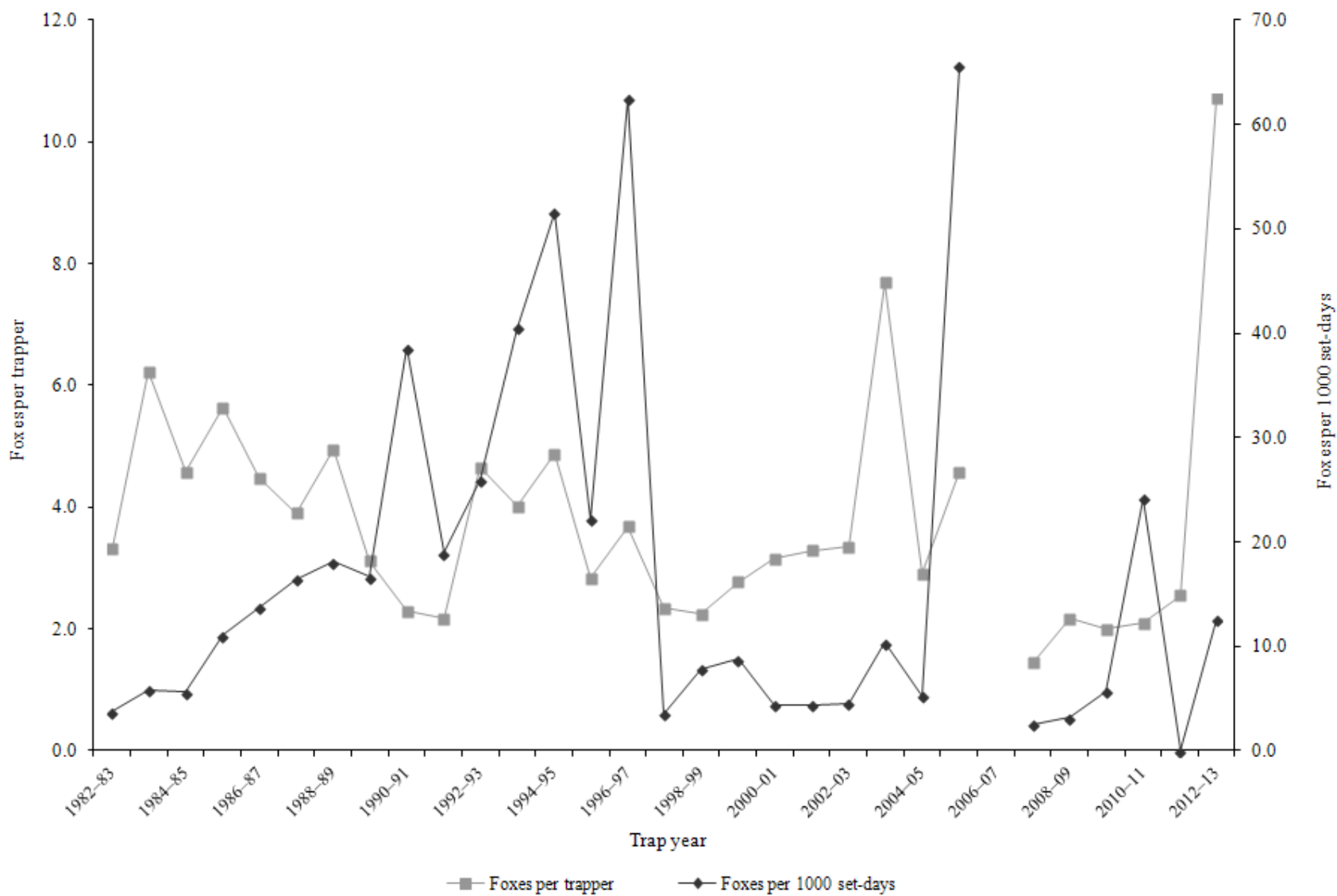
Statewide kit fox harvest statistics*, Utah 1982–2013.

Trap year	Trappers afield	Incidental harvest	Trap harvest	Hunt harvest	Set-days / fox	Fox / 1000 set-days	Fox / trapper	Pelt price (\$)
1982–83	109	—	363	—	267	3.7	3.3	11.39
1983–84	112	—	698	—	171	5.8	6.2	11.99
1984–85	142	—	651	—	178	5.6	4.6	11.17
1985–86	108	—	609	—	90	11.1	5.6	7.50
1986–87	122	—	547	—	73	13.7	4.5	9.90
1987–88	138	—	538	—	61	16.5	3.9	10.69
1988–89	130	—	643	—	55	18.1	4.9	6.98
1989–90	117	—	365	—	60	16.6	3.1	3.19
1990–91	81	—	186	—	26	38.6	2.3	4.67
1991–92	86	—	187	—	53	18.9	2.2	2.78
1992–93	41	—	191	—	39	25.9	4.7	4.30
1993–94	75	—	301	—	25	40.6	4.0	4.69
1994–95	109	—	531	—	19	51.6	4.9	6.45
1995–96	77	—	218	—	45	22.2	2.8	6.25
1996–97	44	—	162	—	16	62.5	3.7	6.77
1997–98	41	—	96	—	282	3.5	2.3	3.50
1998–99	75	—	168	—	128	7.8	2.2	7.31
1999–00	66	—	183	—	114	8.8	2.8	2.90
2000–01	51	—	161	—	227	4.4	3.2	6.13
2001–02	52	—	171	—	229	4.4	3.3	10.72
2002–03	90	—	302	—	221	4.5	3.4	5.44
2003–04	83	—	638	—	97	10.4	7.7	5.38
2004–05	89	—	259	—	191	5.2	2.9	8.98
2005–06	40	—	183	—	15	65.6	4.6	10.92
2006–07	65	—	—	—	—	—	—	10.50
2007–08	27	—	39	—	392	2.6	1.4	7.87
2008–09	48	—	104	—	314	3.2	2.2	7.61
2009–10	19	13	38	—	177	5.6	2.0	9.47
2010–11	20	3	42	—	41	24.2	2.1	12.68
2011–12	18	64	0	46	—	0.0	2.6	14.49
2012–13	31	41	315	17	80	12.6	10.7	14.37
Average	74	30	296	32	127	17.1	3.8	7.97

Prior to the 2005–06 season, harvest by hunting and trapping were not collected separately and trapping harvest estimates included harvest by both hunters and trappers. Trap harvest includes incidental harvest.

*Trappers and fox per trapper include hunters and their harvest. Set-days per fox and fox per 1000 set-days are based only on trapping activity, and do not include hunt harvest or hunter-days afield.

Statewide kit fox harvest trends, Utah 1982–2013.



MARTEN

Statewide marten harvest statistics, Utah 1982–1999.

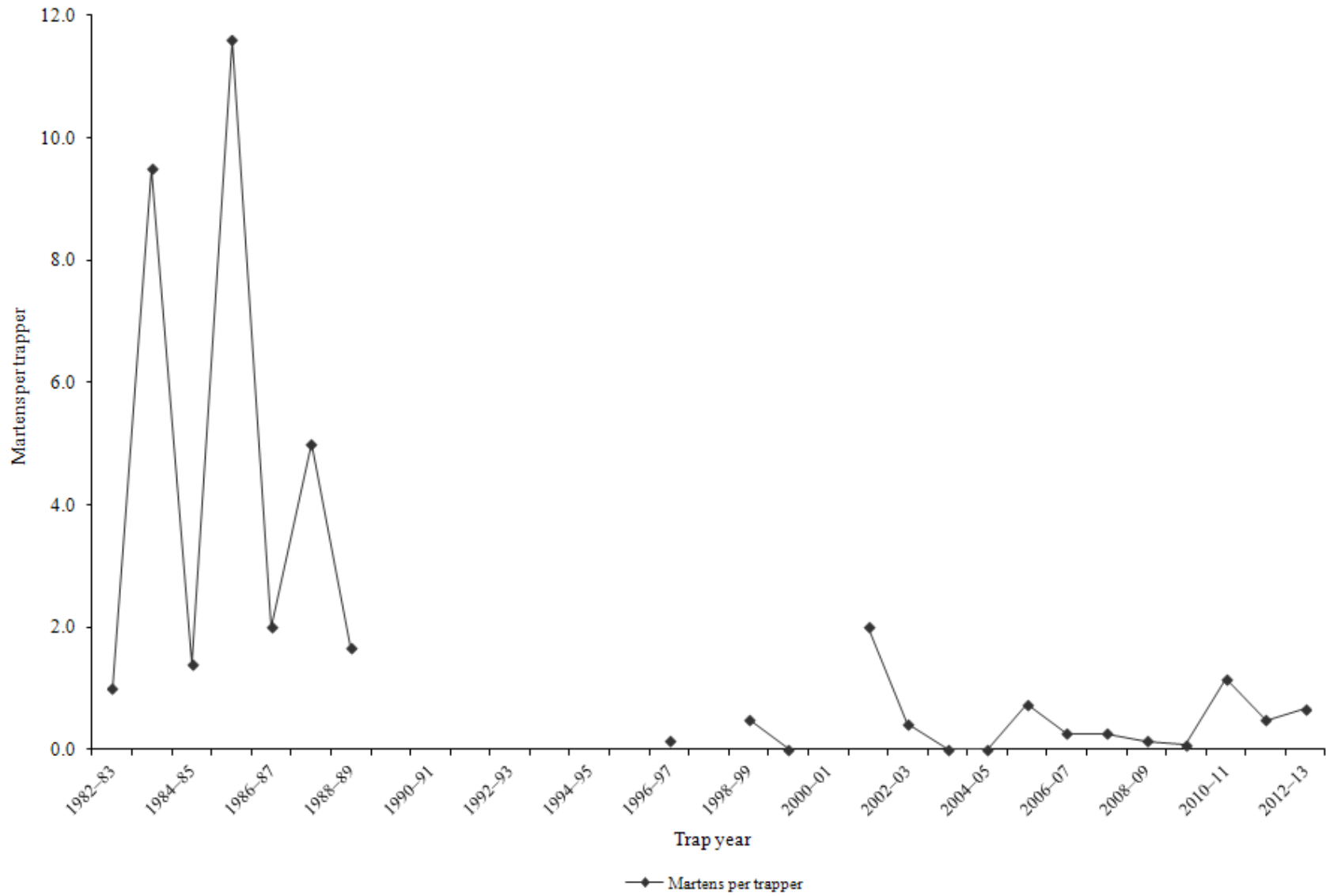
Trap year	Trappers afield	Trap / hunt harvest	Set-days	Set-days / marten	Martens / 1000 set-days	Martens / trapper	Pelt price (\$)
1982–83	1	1	6	6	166.7	1.0	10.00
1983–84	9	84	4704	56	17.9	9.5	20.00
1984–85	9	12	6516	543	1.8	1.4	24.00
1985–86	10	121	7381	61	16.4	11.6	23.00
1986–87	11	22	8558	389	2.6	2.0	25.68
1987–88	10	50	9750	195	5.1	5.0	40.00
1988–89	6	10	1210	121	8.3	1.7	31.00
1989–90	—	—	—	—	—	—	—
1990–91	—	—	—	—	—	—	—
1991–92	—	—	—	—	—	—	—
1992–93	—	—	—	—	—	—	—
1993–94	—	—	—	—	—	—	—
1994–95	—	—	—	—	—	—	—
1995–96	—	—	—	—	—	—	—
1996–97	13	2	—	—	—	0.2	20.00
1997–98	—	—	—	—	—	—	11.00
1998–99	12	6	1228	205	4.9	0.5	7.11
Average	9	34	4919	197	28.0	3.6	21.18

Statewide marten harvest statistics, Utah 1999–2013.

Trap year	Permits sold	Successful trappers	Male harvest	Female harvest	Unknown harvest	Total harvest	Success rate (%)*	Martens / trapper*
1999–00	5	0	0	0	0	0	0.0	0.0
2000–01	—	1	3	3	0	6	—	—
2001–02	11	2	16	6	0	22	18.2	2.0
2002–03	12	1	3	2	0	5	8.3	0.4
2003–04	18	0	0	0	0	0	0.0	0.0
2004–05	12	0	0	0	0	0	0.0	0.0
2005–06	16	2	7	4	1	12	12.5	0.8
2006–07	26	3	6	1	0	7	11.5	0.3
2007–08	22	4	7	14	0	21	18.2	1.0
2008–09	28	1	2	2	0	4	3.6	0.1
2009–10	25	1	2	0	0	2	4.0	0.1
2010–11	31	2	24	12	0	36	6.5	1.2
2011–12	29	3	7	3	4	14	10.3	0.5
2012–13	39	3	15	5	6	26	7.7	0.7
Average	21	2	7	3	1	11	7.8	0.5

*Assumption: Every person who possessed a marten permit trapped or hunted.

Statewide marten harvest trends, Utah 1982–2013.



MINK

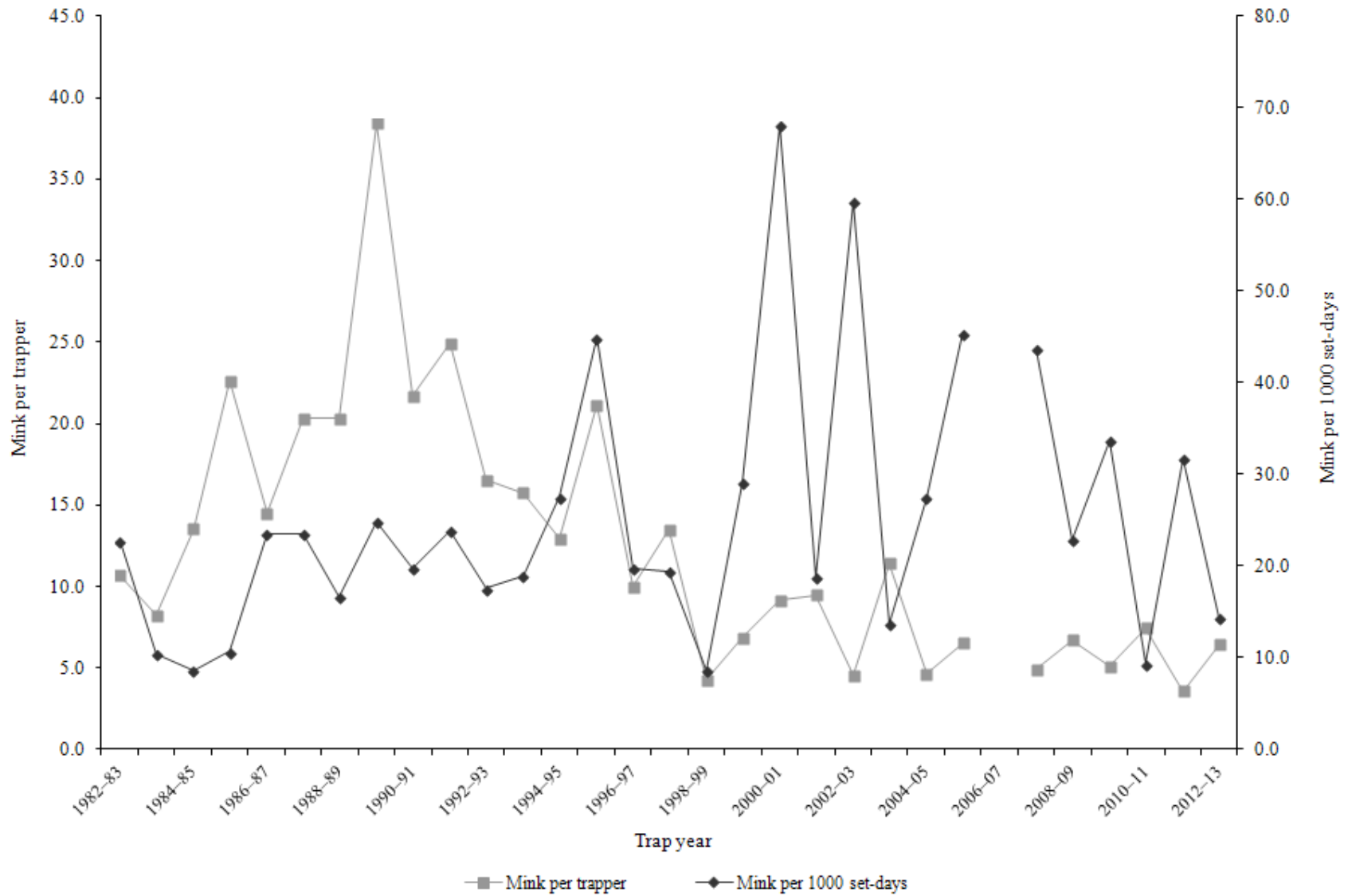
Statewide mink harvest statistics*, Utah 1982–2013.

Trap year	Trappers afield	Incidental harvest	Trap harvest	Hunt harvest	Set-days / mink	Mink / 1000 set-days	Mink / trapper	Pelt price (\$)
1982–83	38	—	405	—	44	22.7	10.7	10.85
1983–84	46	—	379	—	95	10.5	8.2	9.13
1984–85	40	—	542	—	117	8.6	13.6	10.27
1985–86	37	—	837	—	94	10.7	22.6	6.00
1986–87	57	—	828	—	42	23.6	14.5	10.63
1987–88	51	—	1037	—	42	23.6	20.3	12.25
1988–89	42	—	854	—	60	16.6	20.3	10.69
1989–90	29	—	1114	—	40	24.8	38.4	6.30
1990–91	25	—	543	—	50	19.8	21.7	6.33
1991–92	29	—	723	—	42	23.9	24.9	6.81
1992–93	23	—	380	—	57	17.6	16.5	7.50
1993–94	30	—	472	—	53	18.9	15.7	8.41
1994–95	27	—	350	—	36	27.6	13.0	8.38
1995–96	25	—	529	—	22	45.0	21.2	10.40
1996–97	27	—	269	—	50	19.8	10.0	10.95
1997–98	25	—	337	—	51	19.4	13.5	5.81
1998–99	81	—	345	—	116	8.6	4.3	7.11
1999–00	61	—	419	—	34	29.1	6.9	6.07
2000–01	51	—	468	—	15	68.1	9.2	4.92
2001–02	30	—	284	—	53	18.8	9.5	5.20
2002–03	59	—	268	—	17	59.8	4.5	2.07
2003–04	59	—	673	—	73	13.7	11.4	8.00
2004–05	68	—	317	—	36	27.5	4.7	8.98
2005–06	34	—	222	—	22	45.4	6.5	9.97
2006–07	65	—	—	—	—	—	—	7.94
2007–08	38	—	186	—	23	43.7	4.9	9.33
2008–09	36	—	242	—	44	22.9	6.7	5.96
2009–10	66	57	338	—	30	33.7	5.1	8.00
2010–11	65	151	485	—	107	9.4	7.5	11.27
2011–12	43	61	153	7	31	31.8	3.6	15.08
2012–13	110	147	706	14	70	14.4	6.4	19.18
Average	46	104	490	11	52	25.3	12.5	8.70

Prior to the 2005–06 season, harvest by hunting and trapping were not collected separately and trapping harvest estimates included harvest by both hunters and trappers. Trap harvest includes incidental harvest.

*Trappers and mink per trapper include hunters and their harvest. Set-days per mink and mink per 1000 set-days are based only on trapping activity, and do not include hunt harvest or hunter-days afield.

Statewide mink harvest trends, Utah 1982–2013.



Mink trapping harvest statistics by county and ecoregion, Utah 2012–13.

County	n	Trappers afield	Trap harvest	Traps set	Trapping days	Set-days	Set-days / mink	Mink / 1000 set-days	Mink / trapper
Beaver	0	0	—	—	—	—	—	—	—
Box Elder	1	3	89	86	411	10283	115	8.7	26.0
Iron	0	0	—	—	—	—	—	—	—
Juab	0	0	—	—	—	—	—	—	—
Millard	0	0	—	—	—	—	—	—	—
Tooele	0	0	—	—	—	—	—	—	—
Great Basin totals	1	3	89	86	411	10283	115	8.7	26.0
Cache	5	17	202	130	596	11034	55	18.3	11.8
Davis	0	0	—	—	—	—	—	—	—
Morgan	3	10	48	79	110	891	19	53.8	4.7
Piute	0	0	—	—	—	—	—	—	—
Rich	2	7	93	127	925	16453	178	5.6	13.5
Salt Lake	1	3	10	45	103	1337	130	7.7	3.0
Sanpete	0	0	—	—	—	—	—	—	—
Sevier	2	7	7	48	65	610	89	11.2	1.0
Summit	1	3	3	10	103	308	90	11.1	1.0
Utah	9	31	192	185	1275	4854	25	39.5	6.2
Wasatch	1	3	7	14	103	411	60	16.7	2.0
Weber	1	3	0	7	17	34	—	0.0	0.0
Rocky Mountain totals	25	86	562	644	3297	35932	64	15.6	6.6
Daggett	0	0	—	—	—	—	—	—	—
Duchesne	3	10	55	86	267	2876	52	19.1	5.3
Uintah	0	0	—	—	—	—	—	—	—
Uintah Basin totals	3	10	55	86	267	2876	52	19.1	5.3
Carbon	0	0	—	—	—	—	—	—	—
Emery	0	0	—	—	—	—	—	—	—
Garfield	0	0	—	—	—	—	—	—	—
Grand	0	0	—	—	—	—	—	—	—
Kane	0	0	—	—	—	—	—	—	—
San Juan	0	0	—	—	—	—	—	—	—
Washington	0	0	—	—	—	—	—	—	—
Wayne	0	0	—	—	—	—	—	—	—
Colorado Plateau totals	0	0	—	—	—	—	—	—	—
Unknown	0	0	—	—	—	—	—	—	—
Statewide totals*	27	93	706	816	3976	49091	70	14.4	7.6

*Statewide totals for sample size and trappers afield are not totals of the columns because trappers trapped multiple counties.

MUSKRAT

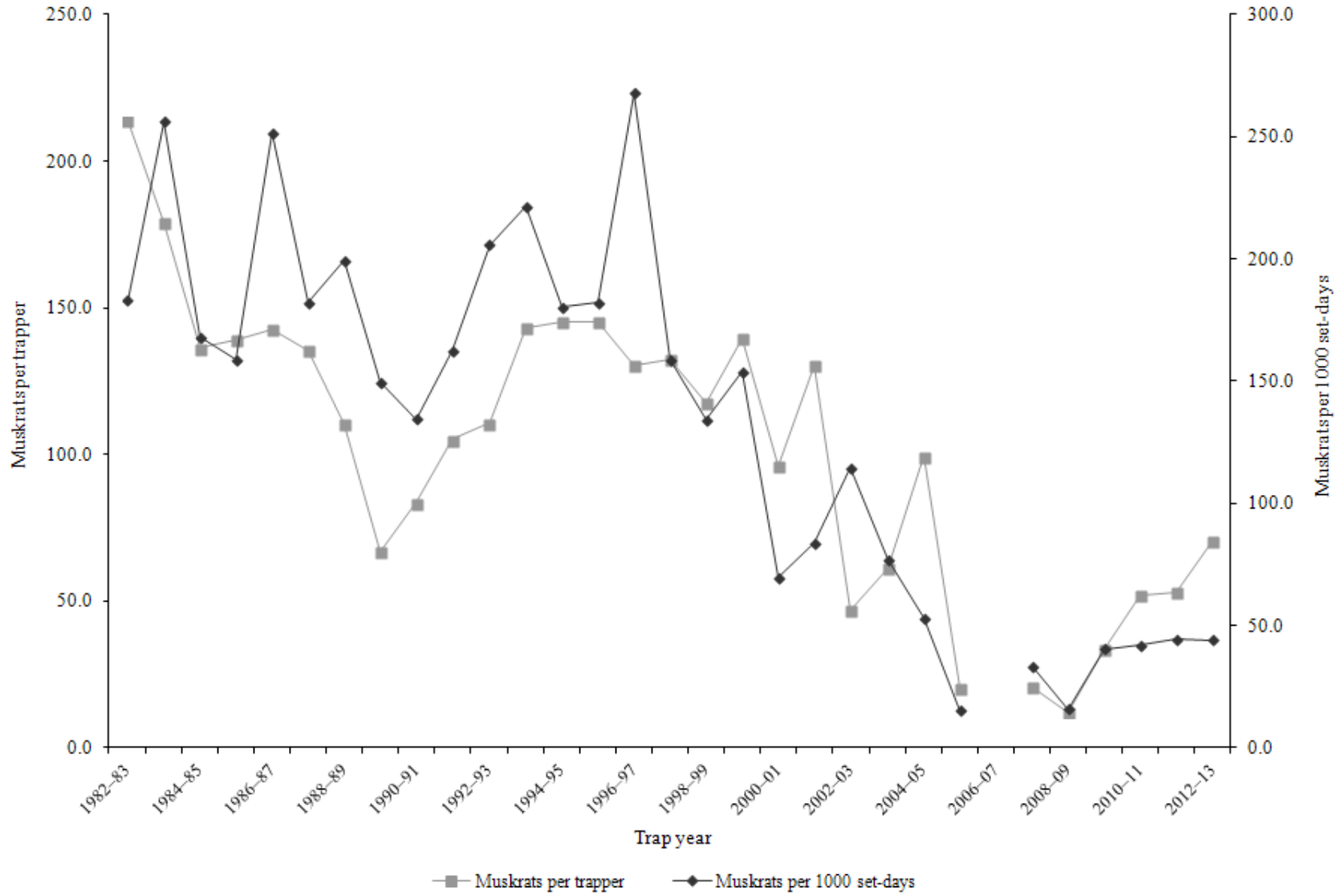
Statewide muskrat harvest statistics*, Utah 1982–2013.

Trap year	Trappers afield	Incidental harvest	Trap harvest	Hunt harvest	Set-days / muskrat	Musk rats / 1000 set-days	Musk rats / trapper	Pelt price (\$)
1982–83	258	—	55137	—	5	183.1	213.7	2.16
1983–84	309	—	55298	—	4	256.2	179.0	2.46
1984–85	400	—	54526	—	6	168.1	136.3	2.45
1985–86	282	—	39195	—	6	158.9	139.0	1.86
1986–87	416	—	59368	—	4	251.7	142.7	2.66
1987–88	432	—	58560	—	5	182.2	135.6	2.46
1988–89	303	—	33400	—	5	199.4	110.2	1.40
1989–90	253	—	16898	—	7	149.6	66.8	0.89
1990–91	85	—	7102	—	7	134.6	83.6	0.91
1991–92	186	—	19547	—	6	162.7	105.1	1.60
1992–93	105	—	11623	—	5	205.9	110.7	1.18
1993–94	157	—	22488	—	5	221.5	143.2	1.89
1994–95	195	—	28369	—	6	180.5	145.5	1.74
1995–96	181	—	26260	—	5	182.2	145.1	2.09
1996–97	179	—	23371	—	4	267.9	130.6	3.59
1997–98	203	—	26907	—	6	158.7	132.5	2.01
1998–99	186	—	21895	—	7	134.1	117.7	1.73
1999–00	151	—	21086	—	7	153.7	139.6	1.00
2000–01	108	—	10376	—	14	69.8	96.1	1.58
2001–02	115	—	14979	—	12	84.0	130.3	2.60
2002–03	135	—	6334	—	9	114.6	46.9	1.59
2003–04	176	—	10777	—	13	77.0	61.2	1.57
2004–05	151	—	15016	—	19	53.1	99.4	1.57
2005–06	41	0	824	—	66	15.3	20.1	3.97
2006–07	81	—	—	—	—	—	—	3.31
2007–08	80	110	1665	—	30	33.3	20.9	3.04
2008–09	98	137	1198	—	63	15.9	12.2	2.49
2009–10	158	164	5341	—	25	40.5	33.8	4.93
2010–11	141	337	7361	—	24	42.2	52.2	5.40
2011–12	150	281	7985	—	23	44.4	53.2	7.28
2012–13	192	117	13534	3	23	44.2	70.5	8.11
Average	191	164	22547	3	14	132.9	102.5	2.63

Prior to the 2005–06 season, harvest by hunting and trapping were not collected separately and trapping harvest estimates included harvest by both hunters and trappers. Trap harvest includes incidental harvest.

*Trappers and muskrat per trapper include hunters and their harvest. Set-days per muskrat and muskrat per 1000 set-days are based only on trapping activity, and do not include hunt harvest or hunter-days afield.

Statewide muskrat harvest trends, Utah 1982–2013.



Muskrat harvest statistics by county and ecoregion, Utah 2012–13.

County	n	Trappers afield	Trap harvest	Traps set	Trapping days	Set-days	Set-days / muskrat	Musk rats / 1000 set-days	Musk rats / trapper
Beaver	0	0	—	—	—	—	—	—	—
Box Elder	4	14	1919	807	1061	76182	40	25.2	139.8
Iron	0	0	—	—	—	—	—	—	—
Juab	2	7	996	240	381	16891	17	58.9	145.0
Millard	0	0	—	—	—	—	—	—	—
Tooele	0	0	—	—	—	—	—	—	—
Great Basin totals	6	21	2915	1047	1442	93073	32	31.3	141.5
Cache	9	31	1734	707	1027	28420	16	61.0	56.1
Davis	2	7	27	96	127	1305	48	21.1	4.0
Morgan	2	7	326	127	179	3447	11	94.6	47.5
Piute	1	3	402	103	206	6180	15	65.0	117.0
Rich	4	14	1888	443	1528	53592	28	35.2	137.5
Salt Lake	1	3	34	45	103	1339	39	25.6	10.0
Sanpete	1	3	41	27	103	824	20	50.0	12.0
Sevier	1	3	244	309	17	1545	6	157.8	71.0
Summit	1	3	27	14	48	192	7	142.9	8.0
Utah	13	45	2970	1099	2525	56675	19	52.4	66.5
Wasatch	0	0	—	—	—	—	—	—	—
Weber	5	17	254	151	536	5682	22	44.7	14.8
Rocky Mountain totals	40	137	7947	3121	6398	159200	20	49.9	57.9
Daggett	0	0	—	—	—	—	—	—	—
Duchesne	4	14	944	326	718	26298	28	35.9	68.8
Uintah	5	17	347	316	501	11226	32	30.9	20.2
Uintah Basin totals	9	31	1291	642	1219	37525	29	34.4	41.8
Carbon	0	0	—	—	—	—	—	—	—
Emery	1	3	45	14	824	3296	74	13.5	13.0
Garfield	0	0	—	—	—	—	—	—	—
Grand	0	0	—	—	—	—	—	—	—
Kane	1	3	0	7	34	69	—	0.0	0.0
San Juan	0	0	—	—	—	—	—	—	—
Washington	0	0	—	—	—	—	—	—	—
Wayne	3	10	1332	165	858	13046	10	102.1	129.3
Colorado Plateau totals	5	17	1377	185	1717	16411	12	83.9	80.2
Unknown	0	0	—	—	—	—	—	—	—
Statewide totals*	55	189	13530	4995	10775	306209	23	44.2	71.7

*Statewide totals for sample size and trappers afield are not totals of the columns because trappers trapped multiple counties.

RACCOON

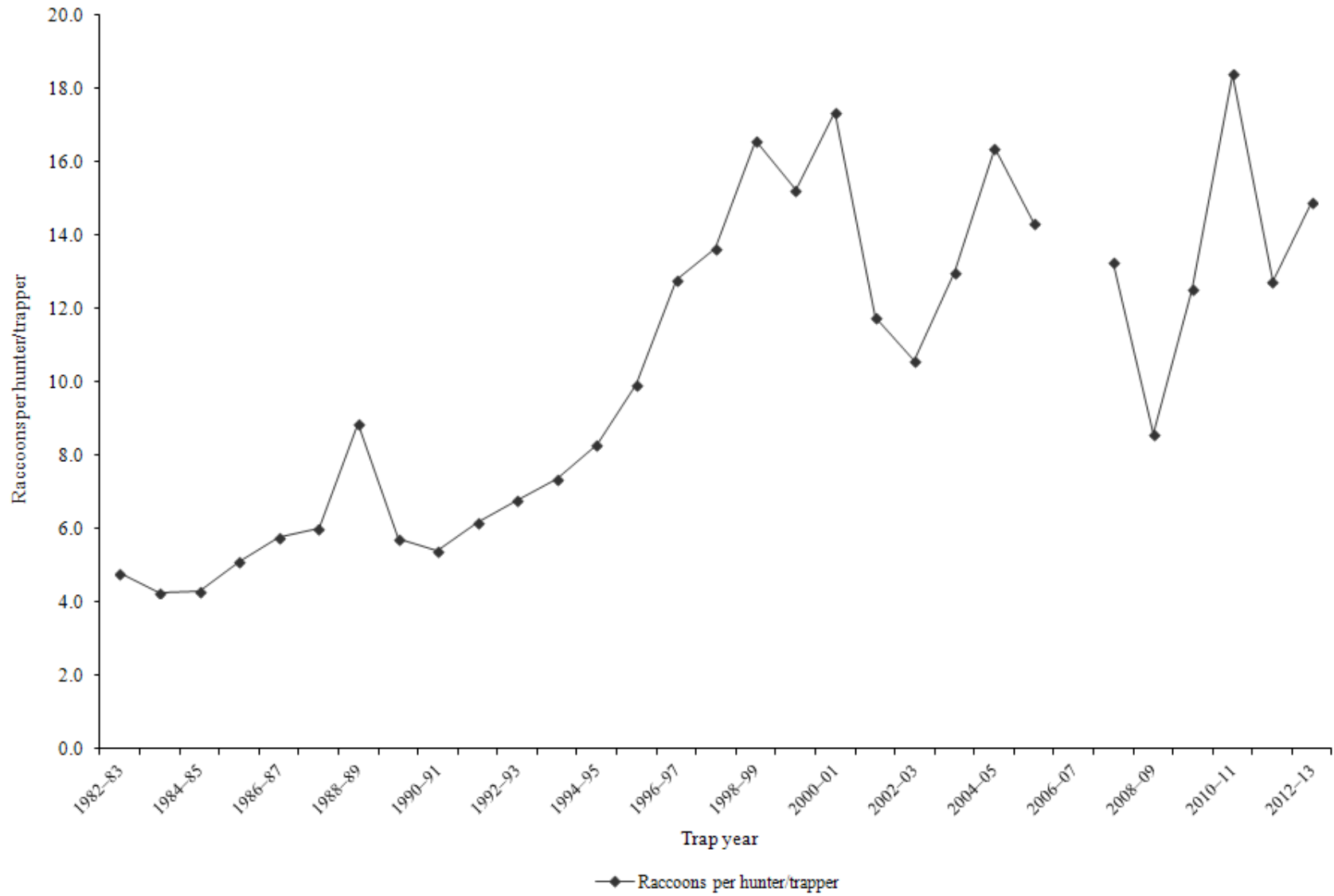
Statewide raccoon harvest statistics*, Utah 1982–2013.

Trap year	Trappers afield	Incidental harvest	Trap harvest	Hunt harvest	Set-days / raccoon	Raccoons / 1000 set-days	Raccoons / trapper	Pelt price (\$)
1982–83	178	—	853	—	19	51.3	4.8	12.34
1983–84	192	—	822	—	40	25.0	4.3	13.51
1984–85	329	—	1417	—	47	21.2	4.3	12.85
1985–86	290	—	1485	—	49	20.5	5.1	9.26
1986–87	418	—	2412	—	39	25.5	5.8	12.62
1987–88	434	—	2619	—	41	24.3	6.0	9.41
1988–89	350	—	3104	—	14	71.9	8.9	7.71
1989–90	430	—	2464	—	17	58.8	5.7	5.78
1990–91	214	—	1156	—	18	54.3	5.4	4.65
1991–92	368	—	2273	—	20	50.3	6.2	4.72
1992–93	272	—	1851	—	17	59.5	6.8	2.57
1993–94	306	—	2259	—	19	53.4	7.4	6.98
1994–95	364	—	3025	—	23	43.8	8.3	6.06
1995–96	293	—	2914	—	10	100.1	9.9	8.07
1996–97	330	—	4228	—	13	77.2	12.8	13.35
1997–98	365	—	4989	—	29	34.5	13.7	9.98
1998–99	468	—	7765	—	22	45.5	16.6	4.95
1999–00	349	—	5317	—	34	29.8	15.2	5.67
2000–01	327	—	5678	—	29	34.8	17.4	5.16
2001–02	321	—	3785	—	32	31.2	11.8	8.04
2002–03	378	—	4001	—	26	38.4	10.6	5.62
2003–04	434	—	5634	—	37	26.8	13.0	10.63
2004–05	391	—	6405	—	35	28.4	16.4	6.54
2005–06	230	—	1761	1537	246	4.1	14.3	9.83
2006–07	325	—	—	—	—	—	—	7.18
2007–08	300	—	2414	1576	50	19.8	13.3	10.85
2008–09	275	—	1639	729	58	17.4	8.6	6.21
2009–10	349	633	3439	946	39	25.9	12.6	7.09
2010–11	292	571	3958	1417	28	36.0	18.4	8.17
2011–12	289	453	3168	520	34	29.6	12.8	7.77
2012–13	377	614	4048	1577	35	28.4	14.9	14.08
Average	330	568	3229	1186	37	38.9	10.4	8.31

Prior to the 2005–06 season, harvest by hunting and trapping were not collected separately and trapping harvest estimates included all harvest by hunters and trappers.

*Trappers and raccoons per trapper include hunters and their harvest. Set-days per raccoon and raccoons per 1000 set-days are based only on trapping activity, and do not include hunt harvest or hunter-days afield.

Statewide raccoon harvest trends, Utah 1982–2013.



Raccoon trapping harvest statistics by county and ecoregion, Utah 2012–13.

County	n	Trappers afield	Trap harvest	Traps set	Trapping days	Set-days	Set-days / raccoon	Raccoons / 1000 set-days	Raccoons / trapper
Beaver	0	0	—	—	—	—	—	—	—
Box Elder	11	38	583	380	1878	28525	49	20.4	15.5
Iron	3	10	45	55	312	2334	52	19.1	4.3
Juab	2	7	17	14	51	103	6	166.7	2.5
Millard	0	0	—	—	—	—	—	—	—
Tooele	1	3	24	14	69	274	11	87.5	7.0
Great Basin totals	17	58	669	463	2310	31236	47	21.4	11.5
Cache	11	38	500	374	1237	15627	31	32.0	13.3
Davis	0	0	—	—	—	—	—	—	—
Morgan	4	14	99	86	123	877	9	113.3	7.3
Piute	1	3	120	62	151	2715	23	44.2	35.0
Rich	3	10	168	96	823	9872	59	17.0	16.3
Salt Lake	2	7	151	48	274	2742	18	55.0	22.0
Sanpete	5	17	144	45	264	614	4	234.6	8.4
Sevier	3	10	55	110	137	2019	37	27.2	5.3
Summit	6	21	195	189	857	7678	39	25.4	9.5
Utah	20	69	535	541	1470	16019	30	33.4	7.8
Wasatch	1	3	24	7	103	206	9	116.7	7.0
Weber	5	17	237	219	1080	11860	50	19.9	13.8
Rocky Mountain totals	61	209	2228	1775	6519	70227	32	31.7	10.7
Daggett	0	0	—	—	—	—	—	—	—
Duchesne	7	24	394	315	1656	22424	57	17.6	16.4
Uintah	4	14	38	55	151	706	19	53.4	2.8
Uintah Basin totals	11	38	432	370	1806	23130	54	18.7	11.5
Carbon	1	3	27	41	21	247	9	111.1	8.0
Emery	6	21	394	199	2859	11291	29	34.9	19.2
Garfield	1	3	7	10	51	154	23	44.4	2.0
Grand	2	7	161	55	411	3291	20	49.0	23.5
Kane	1	3	0	10	206	617	—	0.0	0.0
San Juan	1	3	10	21	48	288	28	35.7	3.0
Washington	2	7	41	48	120	1303	32	31.6	6.0
Wayne	1	3	58	27	51	411	7	141.7	17.0
Colorado Plateau totals	15	51	698	411	3767	17601	25	39.7	13.6
Unknown	2	7	21	21	106	518	25	39.7	3.0
Statewide totals*	99	339	4048	3040	14509	142711	35	28.4	11.9

*Statewide totals for sample size and trappers afield are not totals of the columns because trappers trapped multiple counties.

RED FOX

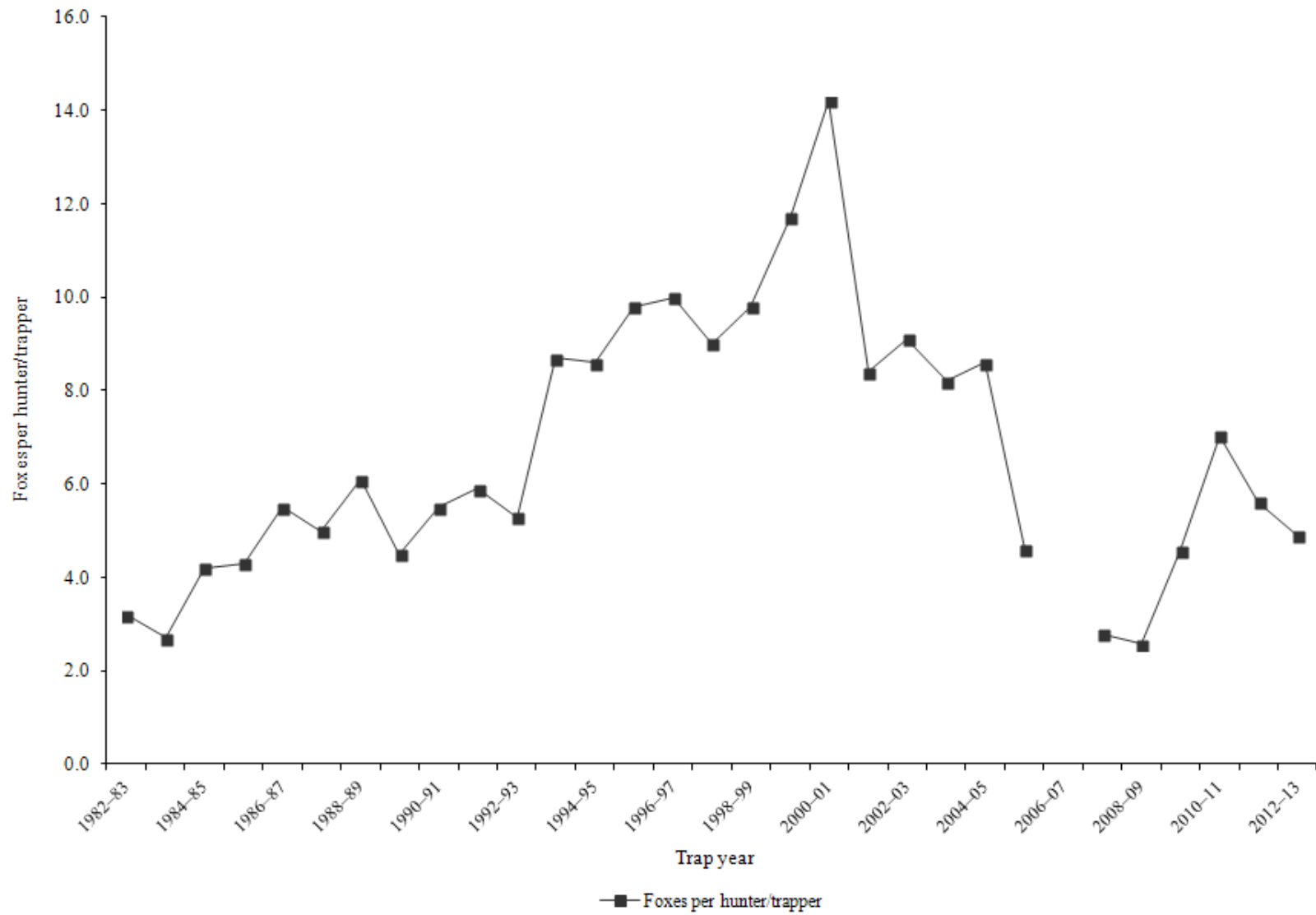
Statewide red fox harvest statistics*, Utah 1982–2013.

Trap year	Trappers afield	Incidental harvest	Trap harvest	Hunt harvest	Set-days / fox	Fox / 1000 set-days	Fox / trapper	Pelt price (\$)
1982–83	172	—	544	—	128	7.8	3.2	30.13
1983–84	191	—	523	—	134	7.5	2.7	28.43
1984–85	298	—	1244	—	116	8.7	4.2	25.90
1985–86	316	—	1351	—	74	13.6	4.3	15.83
1986–87	444	—	2446	—	59	17.1	5.5	20.14
1987–88	506	—	2545	—	50	20.2	5.0	13.66
1988–89	398	—	2446	—	34	29.2	6.1	6.57
1989–90	496	—	2250	—	40	25.3	4.5	7.80
1990–91	365	—	1993	—	25	40.0	5.5	6.34
1991–92	623	—	3663	—	28	35.4	5.9	10.70
1992–93	594	—	3126	—	27	37.5	5.3	10.12
1993–94	578	—	5055	—	26	38.9	8.7	14.74
1994–95	509	—	4378	—	36	28.0	8.6	15.34
1995–96	421	—	4115	—	26	38.7	9.8	18.08
1996–97	427	—	4274	—	27	36.8	10.0	17.48
1997–98	414	—	3744	—	32	31.5	9.0	11.31
1998–99	570	—	5600	—	34	29.5	9.8	8.95
1999–00	420	—	4900	—	44	22.7	11.7	14.19
2000–01	375	—	5330	—	52	19.1	14.2	16.92
2001–02	379	—	3192	—	59	16.9	8.4	24.48
2002–03	482	—	4399	—	76	13.1	9.1	28.19
2003–04	568	—	4639	—	71	14.1	8.2	18.07
2004–05	545	—	4674	—	102	9.8	8.6	18.86
2005–06	406	—	1874	—	196	5.1	4.6	24.35
2006–07	496	—	—	—	—	—	—	20.49
2007–08	407	—	1130	—	174	5.7	2.8	21.42
2008–09	339	—	872	—	261	3.8	2.6	17.98
2009–10	461	557	1908	192	102	9.8	4.6	16.32
2010–11	376	216	2435	213	84	12.0	7.0	22.62
2011–12	335	388	1757	128	84	11.9	5.6	42.47
2012–13	380	195	1690	171	83	12.1	4.9	43.50
Average	429	339	2937	176	76	20.1	6.7	19.08

Prior to the 2005–06 season, harvest by hunting and trapping were not collected separately and trapping harvest estimates included harvest by both hunters and trappers. Trap harvest includes incidental harvest.

*Trappers and fox per trapper include hunters and their harvest. Set-days per fox and fox per 1000 set-days are based only on trapping activity, and do not include hunt harvest or hunter-days afield.

Statewide red fox harvest trends, Utah 1982–2013.



Red fox trapping harvest statistics by county and ecoregion, Utah 2012–13.

County	n	Trappers afield	Trap harvest	Traps set	Trapping days	Set-days	Set-days / fox	Fox / 1000 set-days	Fox / trapper
Beaver	5	17	45	168	377	3657	82	12.2	2.6
Box Elder	7	24	134	614	1152	27630	207	4.8	5.6
Iron	4	14	41	69	411	2314	56	17.8	3.0
Juab	0	0	—	—	—	—	—	—	—
Millard	1	3	7	24	17	120	18	57.1	2.0
Tooele	2	7	10	45	237	1800	175	5.7	1.5
Great Basin totals	19	65	237	919	2194	35521	150	6.7	3.6
Cache	7	24	127	394	1114	20909	165	6.1	5.3
Davis	2	7	55	58	79	572	10	95.8	8.0
Morgan	4	14	41	86	271	1512	37	27.2	3.0
Piute	1	3	41	34	72	720	18	57.1	12.0
Rich	2	7	89	151	617	13162	148	6.8	13.0
Salt Lake	6	21	233	147	754	8483	36	27.5	11.3
Sanpete	1	3	17	14	103	411	24	41.7	5.0
Sevier	3	10	75	58	411	2057	27	36.7	7.3
Summit	2	7	3	65	329	967	282	3.5	0.5
Utah	13	45	168	230	987	7534	45	22.3	3.8
Wasatch	6	21	34	103	456	2362	69	14.5	1.7
Weber	4	14	96	168	319	5707	59	16.8	7.0
Rocky Mountain totals	51	175	979	1508	5512	64395	66	15.2	5.6
Daggett	0	0	—	—	—	—	—	—	—
Duchesne	3	10	34	106	123	668	20	51.3	3.3
Uintah	4	14	72	93	291	2057	29	35.0	5.3
Uintah Basin totals	7	24	106	199	415	2725	26	39.0	4.4
Carbon	1	3	17	27	27	219	13	78.1	5.0
Emery	7	24	130	240	1316	7438	57	17.5	5.4
Garfield	5	17	38	93	456	3842	102	9.8	2.2
Grand	3	10	45	120	192	2848	64	15.6	4.3
Kane	3	10	7	69	353	2835	414	2.4	0.7
San Juan	4	14	24	243	261	5337	222	4.5	1.8
Washington	0	0	—	—	—	—	—	—	—
Wayne	5	17	106	243	908	14876	140	7.1	6.2
Colorado Plateau totals	28	96	367	1035	3513	37396	102	9.8	3.8
Unknown	0	0	—	—	—	—	—	—	—
Statewide totals*	96	329	1690	3661	11633	140037	83	12.1	5.1

*Statewide totals for sample size and trappers afield are not totals of the columns because trappers trapped multiple counties.

Red fox non-trapping harvest statistics by county and ecoregion, Utah 2012–13.

County	n	Hunters afield	Non-trap harvest	Hunter-days afield	Hunter-days / fox	Fox / hunter
Beaver	1	3	0	10	—	0.0
Box Elder	4	14	7	387	56.5	0.5
Iron	1	3	0	3	—	0.0
Juab	0	0	—	—	—	—
Millard	1	3	0	21	—	0.0
Tooele	3	10	0	291	—	0.0
Great Basin totals	10	34	7	713	104.0	0.2
Cache	0	0	—	—	—	—
Davis	1	3	0	3	—	0.0
Morgan	0	0	—	—	—	—
Piute	2	7	3	17	5.0	0.5
Rich	0	0	—	—	—	—
Salt Lake	1	3	0	0	—	0.0
Sanpete	0	0	—	—	—	—
Sevier	0	0	—	—	—	—
Summit	2	7	3	14	4.0	0.5
Utah	1	3	0	31	—	0.0
Wasatch	1	3	0	3	—	0.0
Weber	0	0	—	—	—	—
Rocky Mountain totals	8	27	7	69	10.0	0.3
Daggett	0	0	—	—	—	—
Duchesne	1	3	3	10	3.0	1.0
Uintah	3	10	7	58	8.5	0.7
Uintah Basin totals	4	14	10	69	6.7	0.8
Carbon	0	0	—	—	—	—
Emery	3	10	7	65	9.5	0.7
Garfield	1	3	3	103	30.0	1.0
Grand	2	7	7	41	6.0	1.0
Kane	1	3	0	7	—	0.0
San Juan	0	0	—	—	—	—
Washington	0	0	—	—	—	—
Wayne	3	10	130	206	1.6	12.7
Colorado Plateau totals	10	34	147	422	2.9	4.3
Unknown	0	0	—	—	—	—
Statewide totals*	25	86	171	1272	7.4	2.0

*Statewide totals for sample size and hunters afield are not totals of the columns because hunters hunted multiple counties.

RINGTAIL

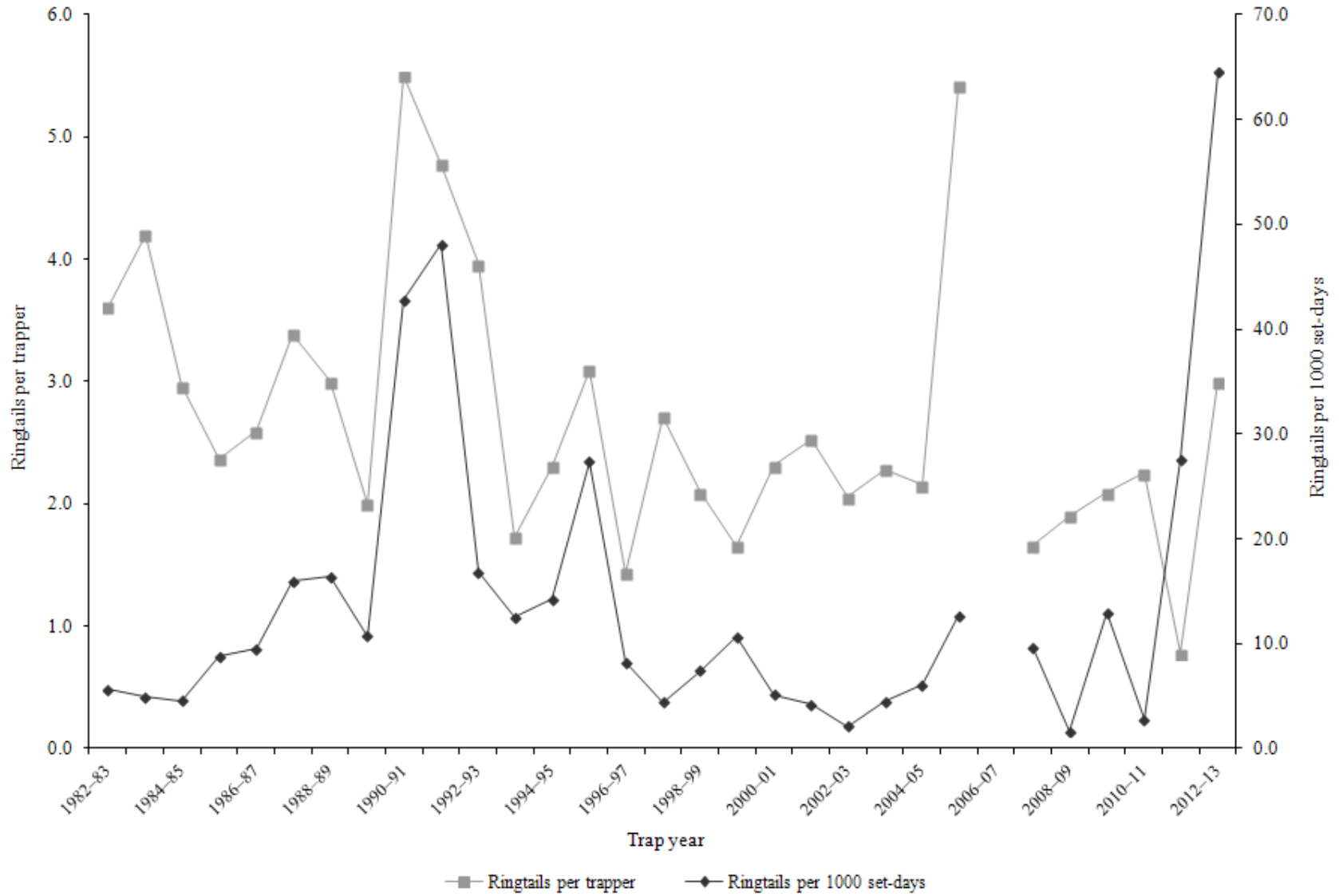
Statewide ringtail harvest statistics*, Utah 1982–2013.

Trap year	Trappers afield	Incidental harvest	Trap harvest	Hunt harvest	Set-days / ringtail	Ringtails / 1000 set-days	Ringtails / trapper	Pelt price (\$)
1982–83	90	—	325	—	176	5.7	3.6	4.40
1983–84	90	—	378	—	203	4.9	4.2	3.96
1984–85	85	—	252	—	218	4.6	3.0	3.15
1985–86	68	—	161	—	114	8.8	2.4	2.69
1986–87	79	—	205	—	105	9.6	2.6	3.64
1987–88	79	—	268	—	62	16.0	3.4	2.40
1988–89	62	—	186	—	61	16.4	3.0	5.70
1989–90	66	—	132	—	93	10.7	2.0	2.65
1990–91	18	—	99	—	23	42.8	5.5	3.50
1991–92	46	—	220	—	21	48.1	4.8	3.22
1992–93	27	—	107	—	59	16.9	4.0	3.97
1993–94	37	—	64	—	80	12.6	1.7	4.04
1994–95	69	—	159	—	70	14.3	2.3	6.41
1995–96	44	—	136	—	37	27.4	3.1	6.96
1996–97	32	—	46	—	122	8.2	1.4	11.68
1997–98	21	—	57	—	227	4.4	2.7	2.99
1998–99	66	—	138	—	134	7.5	2.1	4.17
1999–00	61	—	101	—	93	10.7	1.7	7.03
2000–01	51	—	118	—	194	5.2	2.3	6.00
2001–02	40	—	101	—	236	4.2	2.5	10.29
2002–03	56	—	115	—	474	2.1	2.1	5.20
2003–04	42	—	96	—	223	4.5	2.3	6.83
2004–05	59	—	127	—	165	6.1	2.2	11.12
2005–06	19	—	103	—	79	12.7	5.4	9.31
2006–07	98	—	—	—	—	—	—	12.37
2007–08	65	—	108	—	104	9.6	1.7	14.86
2008–09	31	—	59	—	621	1.6	1.9	10.70
2009–10	22	63	46	—	77	13.0	2.1	15.00
2010–11	16	26	36	—	356	2.8	2.3	18.91
2011–12	18	14	14	—	36	27.6	0.8	12.21
2012–13	7	41	21	0	16	64.5	3.0	15.66
Average	50	36	133	0	149	14.1	2.7	7.45

Prior to the 2005–06 season, harvest by hunting and trapping were not collected separately and trapping harvest estimates included harvest by both hunters and trappers. Trap harvest includes incidental harvest.

*Trappers and ringtails per trapper include hunters and their harvest. Set-days per ringtail and ringtails per 1000 set-days are based only on trapping activity, and do not include hunt harvest or hunter-days afield.

Statewide ringtail harvest trends, Utah 1982–2013.



SPOTTED SKUNK

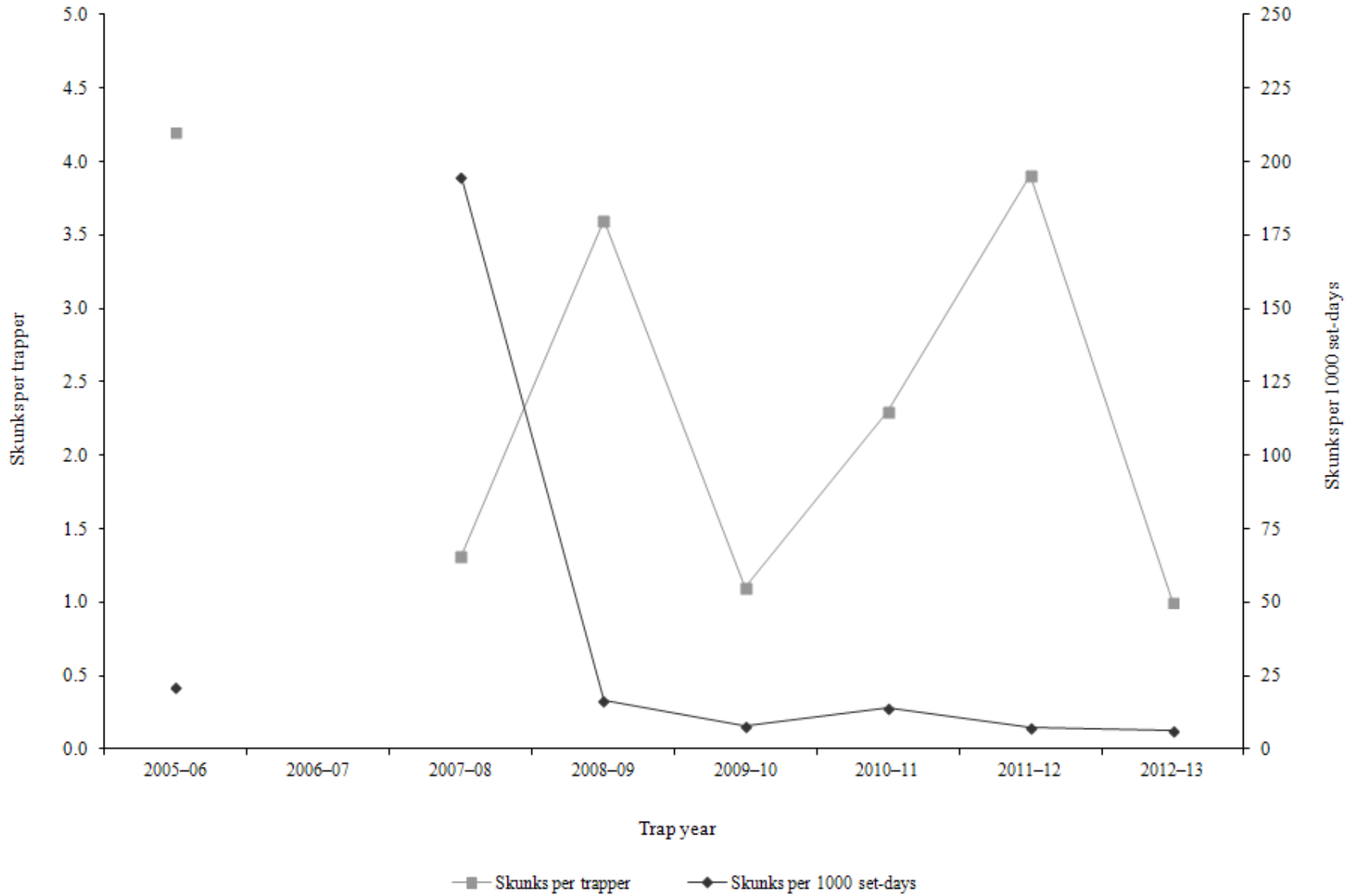
Statewide spotted skunk harvest statistics*, Utah 2006–2013.

Trap year	Trappers afield	Incidental harvest	Trap harvest	Hunt harvest	Set-days / skunk	Skunks / 1000 set-days	Skunks / trapper	Pelt price (\$)
2005–06	34	—	144	—	47	21.2	4.2	5.37
2006–07	106	—	—	—	—	—	—	12.42
2007–08	34	—	45	—	5	194.8	1.3	12.07
2008–09	67	—	238	—	60	16.8	3.6	8.00
2009–10	19	95	21	—	124	8.1	1.1	15.00
2010–11	33	200	76	—	71	14.0	2.3	15.00
2011–12	11	221	14	29	135	7.4	3.9	8.25
2012–13	17	137	17	0	156	6.4	1.0	14.48
Average	40	163	79	15	85	38.4	2.5	11.32

Prior to 2005–06, spotted skunk harvest and trapping activity were combined with striped skunk. In addition, harvest by hunting and trapping were not collected separately and trapping harvest estimates included harvest by both hunters and trappers. Trap harvest includes incidental harvest.

*Trappers and skunks per trapper include hunters and their harvest. Set-days per skunk and skunks per 1000 set-days are based only on trapping activity, and do not include hunt harvest or hunter-days afield.

Statewide spotted skunk* harvest trends, Utah 2005–2013.



*Prior to 2005–06, spotted skunk harvest and trapping activity were combined with striped skunk.

STRIPED SKUNK

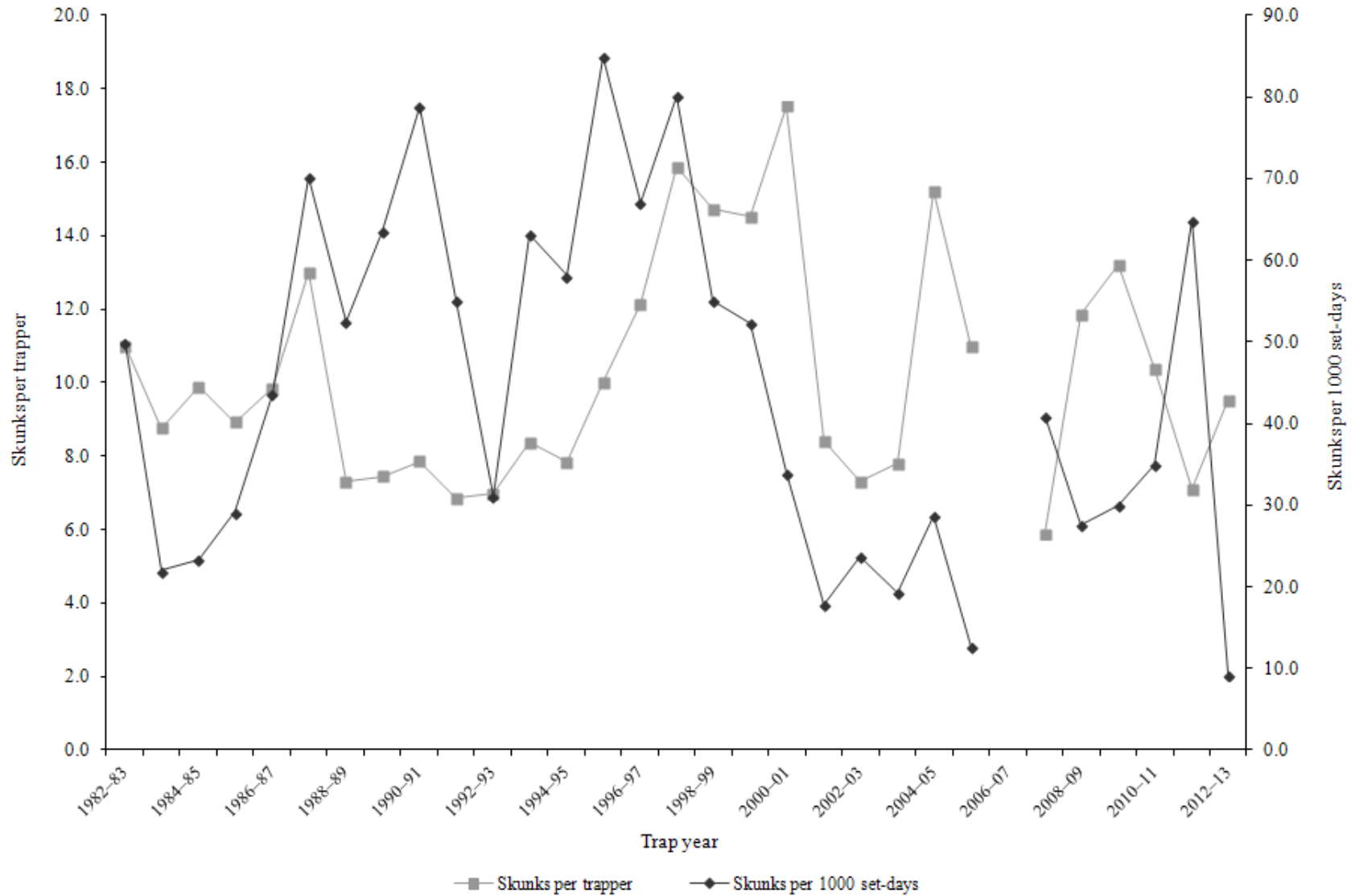
Statewide striped skunk harvest statistics*, Utah 1982–2013.

Trap year	Trappers afield	Incidental harvest	Trap harvest	Hunt harvest	Set-days / skunk	Skunks / 1000 set-days	Skunks / trapper	Pelt price (\$)
1982–83	140	—	1540	—	20	49.9	11.0	3.00
1983–84	144	—	1262	—	45	22.0	8.8	2.85
1984–85	111	—	1097	—	43	23.3	9.9	2.17
1985–86	195	—	1741	—	34	29.1	8.9	—
1986–87	188	—	1851	—	23	43.6	9.8	—
1987–88	185	—	2404	—	14	70.2	13.0	1.05
1988–89	132	—	966	—	19	52.5	7.3	0.30
1989–90	173	—	1289	—	16	63.6	7.5	0.30
1990–91	82	—	645	—	13	78.8	7.9	0.30
1991–92	151	—	1037	—	18	55.2	6.9	4.00
1992–93	132	—	922	—	32	31.1	7.0	5.30
1993–94	175	—	1465	—	16	63.2	8.4	7.35
1994–95	183	—	1438	—	17	58.1	7.9	9.29
1995–96	175	—	1753	—	12	84.9	10.0	6.63
1996–97	142	—	1726	—	15	67.1	12.2	6.00
1997–98	182	—	2890	—	12	80.2	15.9	4.11
1998–99	219	—	3227	—	18	55.1	14.7	5.67
1999–00	188	—	2730	—	19	52.3	14.5	8.50
2000–01	220	—	3857	—	29	34.0	17.5	8.69
2001–02	214	—	1798	—	56	17.8	8.4	6.79
2002–03	237	—	1732	—	42	23.7	7.3	4.24
2003–04	295	—	2305	—	52	19.3	7.8	10.00
2004–05	280	—	4264	—	35	28.7	15.2	4.64
2005–06	95	—	1043	—	79	12.6	11.0	5.37
2006–07	138	—	—	—	—	—	—	6.07
2007–08	144	—	848	—	24	41.0	5.9	4.52
2008–09	143	—	1697	—	36	27.6	11.9	3.15
2009–10	124	1632	1638	—	33	30.0	13.2	6.47
2010–11	154	1136	1597	—	29	35.0	10.4	5.29
2011–12	107	916	602	160	15	65.0	7.1	4.55
2012–13	137	1159	1241	65	108	9.3	9.5	5.01
Average	167	1211	1754	113	31	44.1	10.2	4.88

Prior to 2005–06, harvest and trapping activity included both striped skunk and spotted skunk. In addition, harvest by hunting and trapping were not collected separately and trapping harvest estimates included harvest by both hunters and trappers. Trap harvest includes incidental harvest.

*Trappers and skunks per trapper include hunters and their harvest. Set-days per skunk and skunks per 1000 set-days are based only on trapping activity, and do not include hunt harvest or hunter-days afield.

Statewide striped skunk* harvest trends, Utah 1982–2013.



*Prior to 2005–06, harvest and trapping activity included both striped skunk and spotted skunk.

Striped skunk trapping harvest statistics by county and ecoregion, Utah 2012–13.

County	n	Trappers afield	Trap harvest	Traps set	Trapping days	Set-days	Set-days / skunk	Skunks / 1000 set-days	Skunks / trapper
Beaver	0	0	—	—	—	—	—	—	—
Box Elder	4	14	463	367	1707	77163	167	6.0	33.8
Iron	1	3	7	31	223	2005	293	3.4	2.0
Juab	0	0	—	—	—	—	—	—	—
Millard	0	0	—	—	—	—	—	—	—
Tooele	1	3	27	10	1251	3753	137	7.3	8.0
Great Basin totals	6	21	497	408	3181	82922	167	6.0	24.2
Cache	3	10	14	41	113	586	43	23.4	1.3
Davis	1	3	17	10	103	308	18	55.6	5.0
Morgan	0	0	—	—	—	—	—	—	—
Piute	0	0	—	—	—	—	—	—	—
Rich	3	10	158	58	1032	8230	52	19.2	15.3
Salt Lake	1	3	69	69	93	1851	27	37.0	20.0
Sanpete	1	3	17	17	106	531	31	32.3	5.0
Sevier	2	7	24	27	41	178	7	134.6	3.5
Summit	0	0	—	—	—	—	—	—	—
Utah	6	21	62	82	1374	15287	248	4.0	3.0
Wasatch	0	0	—	—	—	—	—	—	—
Weber	0	0	—	—	—	—	—	—	—
Rocky Mountain totals	17	58	361	305	2862	26972	75	13.3	6.2
Daggett	0	0	—	—	—	—	—	—	—
Duchesne	4	14	106	106	1337	15798	149	6.7	7.8
Uintah	0	0	—	—	—	—	—	—	—
Uintah Basin totals	4	14	106	106	1337	15798	149	6.7	7.8
Carbon	0	0	—	—	—	—	—	—	—
Emery	3	10	38	21	847	2286	61	16.5	3.7
Garfield	0	0	—	—	—	—	—	—	—
Grand	1	3	154	34	206	2057	13	75.0	45.0
Kane	0	0	—	—	—	—	—	—	—
San Juan	1	3	69	51	72	1080	16	63.5	20.0
Washington	2	7	17	75	278	2989	174	5.7	2.5
Wayne	0	0	—	—	—	—	—	—	—
Colorado Plateau totals	7	24	278	182	1402	8411	30	33.0	11.6
Unknown	0	0	—	—	—	—	—	—	—
Statewide totals*	34	117	1241	1001	8782	134103	108	9.3	10.6

*Statewide totals for sample size and trappers afield are not totals of the columns because trappers trapped multiple counties

WEASEL

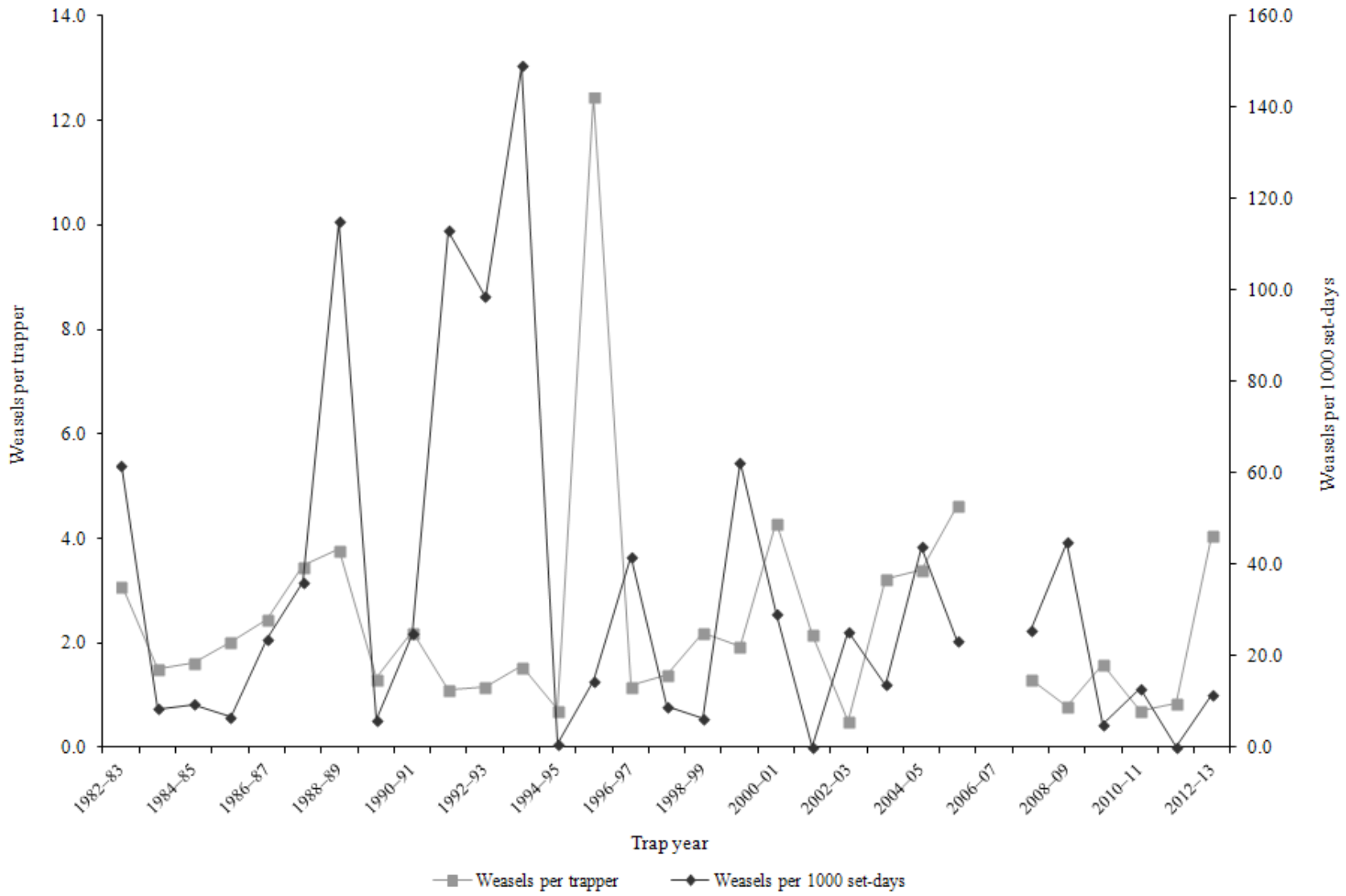
Statewide weasel harvest statistics*, Utah 1982–2013.

Trap year	Trappers afield	Incidental harvest	Trap harvest	Hunt harvest	Set-days / weasel	Weasels / 1000 set-days	Weasels / trapper	Pelt price (\$)
1982–83	19	—	59	—	16	61.5	3.1	1.00
1983–84	22	—	33	—	117	8.5	1.5	0.00
1984–85	46	—	75	—	106	9.4	1.6	0.75
1985–86	33	—	67	—	149	6.7	2.0	0.00
1986–87	50	—	123	—	42	23.6	2.5	1.50
1987–88	61	—	212	—	28	36.1	3.5	1.18
1988–89	24	—	91	—	9	115.0	3.8	0.25
1989–90	25	—	33	—	166	6.0	1.3	0.25
1990–91	14	—	31	—	40	24.8	2.2	0.30
1991–92	17	—	19	—	9	113.1	1.1	0.30
1992–93	24	—	28	—	10	98.6	1.2	0.30
1993–94	20	—	31	—	7	149.0	1.6	5.11
1994–95	18	—	13	—	1189	0.8	0.7	1.57
1995–96	24	—	299	—	69	14.6	12.5	3.08
1996–97	11	—	13	—	24	41.7	1.2	7.40
1997–98	20	—	28	—	111	9.0	1.4	3.03
1998–99	15	—	33	—	157	6.4	2.2	5.50
1999–00	34	—	66	—	16	62.4	1.9	—
2000–01	36	—	155	—	34	29.3	4.3	8.50
2001–02	6	—	13	—	0	—	2.2	—
2002–03	6	—	3	—	39	25.4	0.5	4.76
2003–04	18	—	58	—	73	13.8	3.2	—
2004–05	25	—	85	—	23	43.9	3.4	2.90
2005–06	41	—	190	—	43	23.3	4.6	—
2006–07	49	—	—	—	—	—	—	6.26
2007–08	11	—	15	—	39	25.6	1.3	2.99
2008–09	14	—	11	—	22	44.9	0.8	—
2009–10	29	13	47	—	196	5.1	1.6	7.64
2010–11	23	20	17	—	78	12.8	0.7	7.21
2011–12	25	4	0	21	—	0.0	0.8	4.58
2012–13	27	21	110	0	87	11.5	4.1	—
Average	25	15	65	11	100	35.3	2.4	3.05

Prior to the 2005–06 season, harvest by hunting and trapping were not collected separately and trapping harvest estimates included harvest by both hunters and trappers. Trap harvest includes incidental harvest.

*Trappers and weasels per trapper include hunters and their harvest. Set-days per weasel and weasels per 1000 set-days are based only on trapping activity, and do not include hunt harvest or hunter-days afield.

Statewide weasel harvest trends, Utah 1982–2013.



APPENDIX: UTAH FURBEARER MANAGEMENT ECOREGIONS

