

UTAH COUGAR ANNUAL REPORT 2022



Publication No. 23-20



UTAH COUGAR ANNUAL REPORT 2022

Prepared by:

Heather H. Bernales
Biometrician

Darren DeBlois
Mammals Program Coordinator

Publication No. 23-20

Annual Performance Report for Federal Aid Project W-65-M, segment 70

State of Utah
Department of Natural Resources
DIVISION OF WILDLIFE RESOURCES

J. Shirley
Division Director

TABLE OF CONTENTS

Introduction	1
Methods	2
Results	2
Permits	4
Statewide harvest and mortality	5
Harvest by hunt unit	9
Guiding	11
Pursuit	12
Livestock depredation	16
Appendix: Historical cougar harvest by hunt unit	18

INTRODUCTION

The cougar harvest report presents cougar harvest and hunter effort trends across the state of Utah, based on data collected from cougar hunters. This report represents the cougar portion of Federal Aid Project W-65-M, segment 70, grant agreement period July 1, 2021 through June 30, 2022. This Federal Aid project covers cougar hunting season 2021–22. Beginning in 2021, the cougar hunting season was changed from a November-to-November hunting timeframe to a July-to-July hunting timeframe. Therefore, this annual report covers a shortened hunting season that ran from November 3, 2021 to June 30, 2022.

There were a total of 53 limited-entry split and harvest-objective cougar hunting units during the 2021–22 season. Ten units were managed through a limited-entry permit system, where a hunter had to apply for and draw from a pool of limited permits. Hunters were allowed to hunt cougars in their drawn unit during the limited-entry season. Forty-three units were managed through a harvest-objective system, where an unlimited number of hunters could hunt and each unit remained open until its quota (harvest objective) was filled, or the season ended. In 2021–22, 33 of these harvest-objective units were under active predator management, which meant these units had no quota and hunters could harvest an unlimited number of cougars until the end of the season.

All limited-entry cougar units opened again as harvest-objective units after the close of the limited-entry season. Quotas on these units equaled the total number of limited-entry permits issued on each unit minus the cougar harvest during the limited-entry season. Limited-entry permits became valid statewide harvest-objective permits if hunters did not harvest a cougar during the limited-entry season, and all harvest-objective permits were valid on limited-entry units that had transitioned into harvest-objective units.

In 2021–22, the 4 control units—units where a hunter could harvest a second cougar with a special cougar control permit—were reclassified as harvest-objective units under active predator-management plans, and the cougar control permit was discontinued. Applicants who drew a limited-entry permit for the 2021–22 cougar seasons were required to wait 3 years before applying for another permit. The waiting period did not apply to harvest-objective permit holders. The season limit was one cougar. Females with kittens, or kittens with spots, were not legal to harvest.

Cougar pursuit was allowed in 52 cougar units (all except Wasatch Mtns, Salt Lake) during the 2021–22 season provided pursuers obtained a valid cougar pursuit permit. An unlimited number of pursuit-only permits, valid on any open unit statewide, were available. Hunters who obtained a limited-entry or harvest-objective permit could pursue cougar on the unit for which the permit was valid.

Season Dates

For the 2021–22 year, the limited-entry hunting season opened November 3, 2021 and closed February 22, 2022, then these units became harvest-objective units from February 25, 2022 through May 31, 2022. The harvest-objective season for harvest-objective-only units opened

November 3, 2021 and closed June 30, 2022, except for the Oquirrh-Stansbury, East and Wasatch Mtns, West-Strawberry units that transitioned to harvest objective one month later. Cougar pursuit season was from November 3, 2021 through May 31, 2022, except for the Book Cliffs, East and La Sal units, which closed to pursuit on April 13, 2022.

In 2021, the spot-and-stalk cougar hunt was authorized to take place every fall, from August 1, 2021 to December 31, 2021. This reduced-price permit authorized a hunter to take one cougar in any hunt unit, regardless of unit type or quota. Cougar harvest taken with spot-and-stalk permits did not count toward quotas, and the use of dogs was prohibited on this hunt.

METHODS

All successful hunters were required to have their cougar checked at a Division office or by an officer within 48 hours of harvest. At that time tooth samples were collected and a permanent tag affixed. Cougar harvest and hunter effort information was also collected. Teeth were sectioned and cementum annuli counted by an independent lab to estimate age of harvested cougar. Cougars aged to be 3-yrs or older were considered adults for the purposes of calculating percent adult females in the harvest. Cougar pursuit information was obtained using a telephone survey of a statistically-valid random sample of cougar pursuit permit holders.

Harvest data from depredating cougar were taken from damage reports received from USDA-APHIS Wildlife Services. Livestock operators could kill damaging cougar and were required to have the carcass checked by a Division officer within 48 hours. Harvest information was collected at that time. Other mortality includes DWR control, roadkill, poaching, found dead, etc.

This annual report presents the most complete and accurate summary of cougar harvest data available at the time of publication. Occasionally, we will adjust a previous years' harvest numbers in a subsequent report as more data are made available after publication. This is typically the case with counts of Wildlife Services (depredation) mortality, and only rarely will counts of hunter harvest need adjustment. In addition, age data from cougars harvested during the most recent summer or fall seasons are often not available at the time this report is published each year. Therefore, age data and survival information are tentative for the current year, and will be finalized in the following year's report. Where numbers or statistics differ between reports, the most recent annual report should always be the most accurate and up-to-date.

RESULTS

For the 2021–22 cougar season, 128 limited-entry permits and 2,340 harvest-objective permits were sold. Limited-entry permits included 126 unit-specific limited-entry permits, one statewide conservation permit, and one statewide sportsman's permit. 1,053 spot-and-stalk permits were sold for the 2021 spot-and-stalk season (July 1 to December 31) and 14 cougars were harvested during that period (6 cougars during the 2021–22 season) with this method. Overall, hunters harvested 467 cougars during the 2021–22 hunting seasons.

Eight cougars were taken by Wildlife Services during the 2021–22 season and 22 cougars were killed by DWR personnel and landowners (with or without depredation tags). There were an

additional 13 other mortalities (roadkill, other, DWR control). A total of 873 cougar pursuit permits were sold and 617 pursuers went afield during the 2021–22 cougar pursuit season. Cougars treed per pursuer was 6.3 with 0.18 cougars treed per day-afield.

Cougar permits sold since the implementation of limited-entry hunts, Utah 1990–2022.

Year	Limited-entry permits*				Harvest-objective permits^			Spot & stalk	Total permits
	Resident	Nonresident	Conservation	Total	Resident	Nonresident	Total		
1990	385	142	—	527	—	—	—	—	527
1991	383	142	—	525	—	—	—	—	525
1992	383	142	—	525/	—	—	—	—	525
1993	431	160	—	591	—	—	—	—	591
1994	479	180	—	659	—	—	—	—	659
1995	559	232	—	791	—	—	—	—	791
1996	611	261	—	872	—	—	—	—	872
1997**	425	170	—	595	—	—	901	—	1496
1998	381	128	—	509	472	199	671	—	1180
1999	337	109	—	446	386	189	575	—	1021
2000	259	84	—	343	374	170	544	—	887
2001	206	66	—	272	880	290	1170	—	1442
2002	228	30	8	266	897	300	1197	—	1463
2003	326	36	12	374	685	266	951	—	1325
2004	215	29	20	264	533	209	742	—	1006
2005	233	30	10	273	841	290	1131	—	1404
2006	356	38	12	406	464	222	686	—	1092
2007	313	35	18	366	600	245	845	—	1211
2008	283	34	20	337	587	238	825	—	1162
2009	271	34	18	323	543	220	763	—	1086
2010	263	32	18	313	566	192	758	—	1071
2011	330	38	15	383	595	190	785	—	1168
2012	312	36	16	364	613	202	815	—	1179
2013	312	36	17	365	564	226	790	—	1155
2014	249	37	20	306	720	263	983	—	1289
2015	226	28	18	272	775	310	1085	—	1357
2016	183	22	25	230	906	313	1219	—	1449
2017	198	25	11	234	869	326	1195	—	1429
2018	228	24	11	263	1079	437	1516	—	1779
2019	296	37	17	350	1085	364	1449	—	1799
2020	314	21	17	352	1298	369	1667	1027‡	3046
2021	184	16	19	219	2296	576	2872	1053‡	4144
2022	117	9	2	128	1844	496	2340	1033‡	3501
Mean	311	74	15	395	819	284	1095	1038	1352

*Expo and statewide sportsman permits are included in resident and non-resident limited-entry permits.

**Combination of limited-entry and harvest-objective hunting initiated in 1997.

^Includes cougar control permits.

‡Spot-and-stalk permits sold for the period July 1 through December 31.

Statewide historical cougar harvest statistics, Utah 1971–1989.

Year	Hunters afield	Harvest	Hunter-days afield	Hunter-days / hunter	Hunter-days / cougar	Cougars / hunter
1971	207	94	—	—	—	0.45
1972	92	51	—	—	—	0.55
1973	108	66	—	—	—	0.61
1974	176	103	963	5.5	9.3	0.59
1975	286	176	1149	4.0	6.5	0.62
1976	332	167	2379	7.2	14.2	0.50
1977	334	177	2098	6.3	11.9	0.53
1978	408	210	2443	6.0	11.6	0.51
1979	436	265	2312	5.3	8.7	0.61
1980	442	205	3081	7.0	15.0	0.46
1981	411	185	2496	6.1	13.5	0.45
1982	432	205	3526	8.2	17.2	0.47
1983	435	172	3728	8.6	21.7	0.40
1984	484	211	3874	8.0	18.4	0.44
1985	488	182	4839	9.9	26.6	0.37
1986	469	200	3785	8.1	18.9	0.43
1987	486	197	4657	9.6	23.6	0.41
1988	662	247	5690	8.6	23.0	0.37
1989	612	231	5811	9.5	25.2	0.38

Statewide cougar harvest and mortality statistics, Utah 1990–2022.

Year	Limited- entry permits*	Harvest- objective quota	Male harvest	Female harvest	Total harvest	Mean age	% permits filled	% quota filled	% females	% adult females	% ≥ 5 yrs old	Cougar treed / day	Wildlife Services harvest	Other mortality	Total harvest + mortality
1990	527	—	146	71	217	—	41	—	33	—	—	0.41	48	10	275
1991	525	—	184	81	265	—	50	—	31	—	—	0.49	38	22	325
1992	525	—	160	81	241	—	46	—	34	—	—	0.45	34	22	297
1993	591	—	260	112	372	—	63	—	30	—	—	0.49	53	42	467
1994	659	—	216	136	352	—	53	—	39	—	—	0.57	53	10	415
1995	791	—	262	169	431	—	54	—	39	—	—	—	54	24	509
1996	872	—	269	183	452	3.5	52	—	40	—	—	0.48	33	39	524
1997	595	275	297	279	576	3.8	56	88	48	—	—	0.33	40	50	666
1998	509	270	261	231	492	3.2	54	80	47	—	—	0.36	27	23	542
1999	446	230	206	167	373	3.1	49	64	45	—	16	0.30	13	1	387
2000	343	304	258	177	435	2.9	60	81	41	—	18	0.28	25	9	469
2001	272	371	242	207	449	3.3	52	35	46	—	18	0.30	27	20	496
2002	266	339	222	184	406	3.1	58	74	45	—	20	0.21	45	17	468
2003	374	297	251	175	427	3.6	58	77	41	—	21	0.29	53	30	510
2004	266	492	219	229	448	3.4	55	66	51	—	19	0.23	47	28	523
2005	276	527	190	131	321	2.5	45	36	41	—	10	0.17	38	21	380
2006	406	227	202	137	339	3.2	59	45	40	—	22	0.19	35	15	389
2007	366	185	173	117	291	2.9	59	42	40	—	18	0.22	9	25	325
2008	337	162	171	116	287	3.0	53	59	40	—	14	0.27	15	18	320
2009	323	158	207	118	325	3.3	70	61	36	—	19	0.26	22	32	379
2010	314	136	199	104	304	3.2	65	71	34	—	13	0.24	21	35	360
2011	383	116	210	134	344	3.6	69	64	39	30	24	0.25	19	36	399
2012	363	**	215	116	331	2.9	45	**	35	23	11	0.24	33	21	384
2013	365	**	205	108	313	3.9	42	**	35	25	33	0.27	12	23	356
2014	306	**	225	112	337	3.4	47	**	33	22	23	0.23	18	21	376

*Includes all limited-entry, sportsman, conservation and expo permits.

**From 2012-2014, harvest-objective quotas on individual hunt units were replaced by cougar management area quotas.

Statewide cougar harvest and mortality statistics, Utah 1990–2022 (continued).

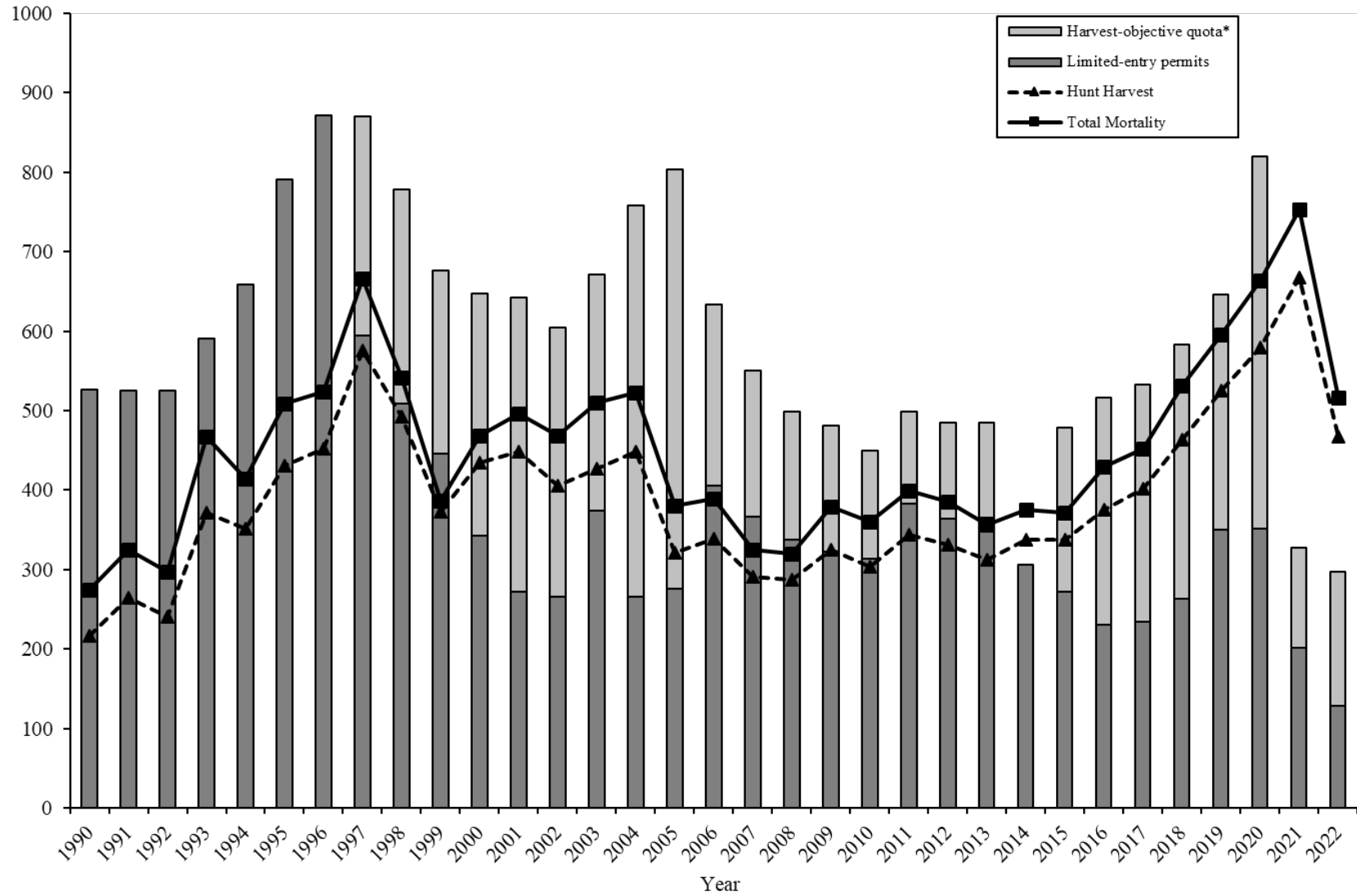
Year	Limited- entry permits*	Harvest- objective quota	Male harvest	Female harvest	Total harvest	Mean age	% permits filled‡	% quota filled	% females	% adult females	% ≥ 5 yrs old	Cougar treed / day	Wildlife Services harvest	Other mortality	Total harvest + mortality
2015	272	207	212	125	337	3.0	45	69	37	18	18	0.25	11	24	372
2016	230	287	263	113	376	4.2	53	69	30	17	40	0.29	31	23	430
2017	234	299	288	114	402	3.3	53	75	28	14	23	0.30	27	24	452
2018	263	320	312	151	463	3.1	55	81	33	18	16	0.24	31	38	532
2019	350	296	329	196	525	3.4	44	81	37	20	19	0.25	39	32	596
2020	352	468	363	214	579	3.0	49	68	37	19	14	0.25	31	54	664
2021	202	126	379	288	667	3.1	55	80	43	26	12	0.25	26	60	753
2022	128	169	258	209	467	2.3	63	—	45	29	8	0.18	8	41	516
Mean	395	260	238	154	392	3.2	54	67	39	22	19	0.30	31	26	450

*Includes limited-entry, sportsman, conservation and expo permits.

‡Percent of permits filled during the limited-entry seasons only.

Beginning in 2015, cougar management area quotas were replaced by individual, unit-by-unit harvest-objective quotas and the age-at-harvest target was reduced from %≥6 yrs old or older to %≥5yrs old or older.

Statewide cougar mortality and harvest objectives, 1990 through 2022.



*Beginning in 2021, most harvest-objective units had unlimited quotas.

Statewide cougar harvest statistics by hunt unit, Utah 2022.

Unit	Limited- entry permits	Harvest objective	Male harvest	Female harvest	Total harvest	Spot & stalk harvest	% permits and harvest objective filled		% females	% ≥ 5 yrs old
Beaver, East	—	Unlimited	10	14	24	0	—	—	58	14
Beaver, West	—	Unlimited	2	2	4	0	—	—	50	0
Book Cliffs, East	—	Unlimited	13	2	15	0	—	—	13	7
Book Cliffs, Rattlesnake Canyon /Nine Mile, South	—	Unlimited	0	0	0	0	—	—	—	—
Box Elder, Desert	—	17	5	2	7	0	—	41	29	0
Box Elder, Pilot Mtn	—	6	0	0	0	0	—	0	—	—
Box Elder, Raft River	9	—	5	0	5	0	56	—	0	0
Cache	—	Unlimited	5	11	16	0	—	—	69	0
Central Mtns, Nebo	15	—	7	5	12	0	80	—	42	22
Central Mtns, Nebo-West Face	—	Unlimited	5	3	8	0	—	—	38	0
Central Mtns, Northeast Manti	—	Unlimited	5	2	7	0	—	—	29	0
Central Mtns, Northwest Manti	—	Unlimited	5	2	7	0	—	—	29	0
Central Mtns, Southeast Manti	—	Unlimited	5	3	8	0	—	—	38	29
Central Mtns, Southwest Manti	—	Unlimited	5	3	8	1	—	—	38	22
Chalk Creek	—	28	13	12	25	0	—	89	48	0
East Canyon	13	—	4	3	7	0	54	—	43	0
East Canyon, Davis	5	—	1	2	3	1	60	—	67	0
Fillmore, Oak Creek	—	Unlimited	1	2	3	0	—	—	67	0
Fillmore, Pahvant	—	Unlimited	7	8	15	0	—	—	53	7
Henry Mtns	—	Unlimited	2	1	3	0	—	—	33	0
Kaiparowits	—	Unlimited	1	0	1	0	—	—	0	0
Kamas	5	—	1	2	3	0	60	—	67	0
La Sal	—	Unlimited	1	4	5	0	—	—	80	20
Monroe	22	—	3	2	5	0	23	—	40	20
Morgan-South Rich	20	—	10	12	22	0	110	—	55	15
Mt Dutton	—	14	8	4	12	0	—	86	33	0
Nine Mile, North	—	Unlimited	9	7	16	0	—	—	44	0
North Slope, Summit/West Daggett	—	Unlimited	5	3	8	0	—	—	38	14

Statewide cougar harvest statistics by hunt unit, Utah 2022 (continued).

Unit	Limited- entry permits	Harvest objective	Male harvest	Female harvest	Total harvest	Spot & stalk harvest	% permits and harvest objective filled	% females	% ≥ 5 yrs old	
North Slope, Three Corners	—	Unlimited	1	2	3	0	—	67	0	
Ogden	—	Unlimited	7	6	13	0	—	46	0	
Oquirrh-Stansbury, East	11	—	0	5	5	0	45	100	0	
Oquirrh-Stansbury, West	—	Unlimited	1	0	1	0	—	0	0	
Panguitch Lake	—	20	14	9	23	0	—	115	39	
Paunsaugunt	—	20	7	5	12	0	—	55	42	
Pine Valley, North	—	26	9	13	22	0	—	85	59	
Pine Valley, South	—	Unlimited	6	3	9	1	—	—	33	
Plateau, Boulder	—	Unlimited	13	8	21	0	—	—	38	
Plateau, Fishlake	—	Unlimited	9	13	22	0	—	—	59	
Plateau, Thousand Lakes	—	Unlimited	1	0	1	0	—	—	0	
San Juan, Desert	—	Unlimited	0	0	0	0	—	—	—	
San Juan, Mountains	—	Unlimited	9	8	17	0	—	—	47	
San Rafael	—	Unlimited	0	0	0	0	—	—	—	
South Slope, Bonanza/Diamond Mtn/Vernal	—	24	7	8	15	0	—	63	53	
South Slope, Yellowstone	—	Unlimited	0	1	1	0	—	—	100	
Southwest Desert	—	Unlimited	4	0	4	0	—	—	0	
Wasatch Mtns, Avintaquin-Currant Creek	—	Unlimited	6	4	10	0	—	—	40	
Wasatch Mtns, Cascade	—	Unlimited	4	3	7	0	—	—	43	
Wasatch Mtns, Salt Lake	—	6	0	0	0	0	—	0	—	
Wasatch Mtns, Timpanogos	—	Unlimited	0	1	1	0	—	—	100	
Wasatch Mtns, West-Strawberry	15	—	11	0	11	0	73	—	0	
West Desert, Mtn Ranges	—	8	0	0	0	0	—	0	—	
West Desert, Tintic-Vernon	11	—	5	1	6	0	55	—	17	
Zion	—	Unlimited	6	8	14	3	—	—	57	
Total	128*	169	258	209	467	6	63	—	45	8

*Total permits includes 1 statewide sportsman permit and 1 statewide conservation permit that are not included in the unit-by-unit permit totals.

Guiding statistics for Utah cougar season, 2002–2022.

Year	Total harvest	Harvest with guide	% harvest with guide
2002	406	285	70.2
2003	427	291	68.1
2004	448	290	64.7
2005	321	202	62.9
2006	339	228	67.3
2007	291	194	66.7
2008	282	159	56.4
2009	325	199	61.2
2010	304	186	61.2
2011	344	196	57.0
2012	331	193	58.3
2013	321	168	52.3
2014	337	189	56.1
2015	371	191	51.5
2016	376	192	51.1
2017	402	238	59.2
2018	464	240	51.7
2019	525	241	45.9
2020	579	252	43.5
2021	667	345	51.7
2022	467	255	54.6

Statewide cougar pursuit statistics, 1979–2022.

Year	n	Permits	% pursuing cougars	% pursuers treeing cougars	Cougars treed / pursuit-day	Cougars treed / pursuer
1979	60	114	72	83	0.24	4.6
1980	19	91	68	92	0.17	1.6
1981	—	95	—	—	—	—
1982	63	96	87	78	0.40	3.3
1983	41	88	83	76	0.24	3.6
1984	90	126	81	82	0.35	6.2
1985	51	86	86	86	0.33	6.4
1986	49	90	98	90	0.37	6.1
1987	66	141	99	77	0.38	6.0
1988	99	147	89	90	0.38	8.0
1989	123	204	72	90	0.40	8.4
1990	282	355	92	88	0.41	7.8
1991	319	364	90	98	0.49	10.8
1992	364	524	80	96	0.45	4.3
1993	347	570	88	97	0.49	5.9
1994	279	552	87	97	0.57	9.4
1995	—	505	—	—	—	—
1996	378	627	78	98	0.48	10.5
1997	298	638	87	88	0.33	9.1
1998	236	635	86	91	0.36	11.0
1999*	275	630	92	74	0.30	3.8
2000	222	545	86	68	0.28	3.1
2001	222	692	84	63	0.30	7.3
2002	—	681	—	—	0.21	—
2003	250	703	80	81	0.29	4.3
2004	199	772	83	73	0.23	3.1
2005	285	703	84	80	0.17	5.5
2006	252	730	88	85	0.19	6.6
2007	208	714	86	74	0.22	6.2
2008	256	880	86	80	0.27	7.4
2009	214	855	86	73	0.26	6.1
2010	224	900	81	73	0.24	4.9
2011	282	909	84	93	0.25	8.1
2012	283	777	85	83	0.24	6.0
2013	289	769	83	82	0.27	6.8
2014	288	738	83	81	0.23	5.4
2015	265	704	82	83	0.25	6.8
2016	199	724	85	82	0.29	8.9
2017	212	698	80	81	0.30	7.8
2018	210	772	80	80	0.24	7.6

*In 1999, the combined cougar/bear pursuit permit was split into separate permits for each species.

Statewide cougar pursuit statistics, 1979–2022 (continued).

Year	n	Permits	% pursuing cougars	% pursuers treeing cougars	Cougars treed / pursuit-day	Cougars treed / pursuer
2019	235	808	82	85	0.25	8.8
2020	221	841	82	86	0.25	8.6
2021	303	867	73	83	0.25	8.9
2022	235	873	71	74	0.18	6.3
Mean	214	553	84	83	0.30	6.6

Statewide cougar pursuit statistics by unit, Utah 2022.

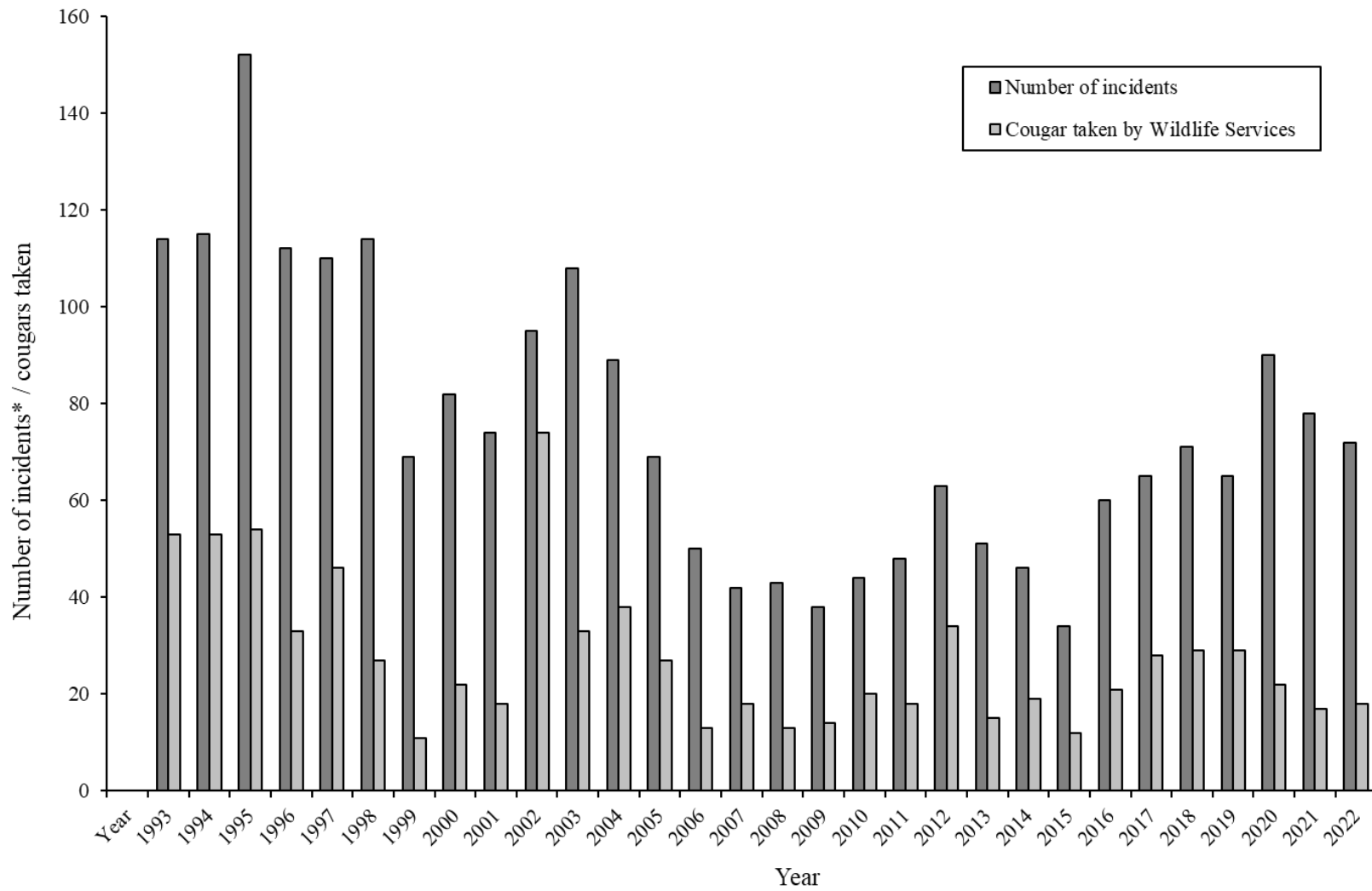
Unit	n	Pursuers afield	Pursuer days afield	Males treed	Females treed	Kittens treed	Unknown treed	Total cougars treed	Cougars treed / day	Cougars treed / pursuer
Beaver, East	18	67	796	74	100	11	11	196	0.25	2.9
Beaver, West	12	45	412	45	52	0	0	97	0.24	2.2
Book Cliffs, East	9	33	528	56	78	0	0	134	0.25	4.1
Book Cliffs, Rattlesnake Canyon/Nine Mile, South	2	7	312	4	4	7	22	37	0.12	5.3
Box Elder, Desert	7	26	620	97	89	7	0	193	0.31	7.4
Box Elder, Pilot Mtn	2	7	11	0	0	0	0	0	0.00	0.0
Box Elder, Raft River	7	26	368	37	52	0	0	89	0.24	3.4
Cache	12	45	1226	71	145	45	4	265	0.22	5.9
Central Mtns, Nebo	11	41	754	41	104	26	11	182	0.24	4.4
Central Mtns, Nebo-West Face	2	7	37	0	4	0	0	4	0.11	0.6
Central Mtns, Northeast Manti	4	15	557	0	26	0	0	26	0.05	1.7
Central Mtns, Northwest Manti	2	7	115	0	15	0	0	15	0.13	2.1
Central Mtns, Southeast Manti	3	11	208	15	33	0	0	48	0.23	4.4
Central Mtns, Southwest Manti	3	11	219	11	19	0	0	30	0.14	2.7
Chalk Creek	2	7	472	56	56	0	0	112	0.24	16.0
East Canyon	4	15	780	19	93	0	0	112	0.14	7.5
East Canyon, Davis	1	4	15	0	4	0	0	4	0.27	1.0
Fillmore, Oak Creek	3	11	93	0	0	0	0	0	0.00	0.0
Fillmore, Pahvant	9	33	1252	11	78	11	0	100	0.08	3.0
Henry Mtns	2	7	249	0	0	0	0	0	0.00	0.0
Kaiparowits	2	7	123	22	0	0	7	29	0.24	4.1
Kamas	0	0	—	—	—	—	—	—	—	—
La Sal	9	33	353	4	15	4	19	42	0.12	1.3
Monroe	10	37	814	33	111	7	0	151	0.19	4.1
Morgan-South Rich	5	19	743	22	33	0	15	70	0.09	3.7
Mt Dutton	3	11	149	22	52	4	7	85	0.57	7.7
Nine Mile, North	3	11	167	0	4	0	0	4	0.02	0.4

Statewide cougar pursuit statistics by unit, Utah 2022 (continued).

Unit	n	Pursuers afield	Pursuer days afield	Males treed	Females treed	Kittens treed	Unknown treed	Total cougars treed	Cougars treed / day	Cougars treed / pursuer
North Slope, Summit/West Daggett	4	15	223	7	22	0	0	29	0.13	1.9
North Slope, Three Corners	1	4	171	0	0	0	0	0	0.00	0.0
Ogden	9	33	658	7	30	0	0	37	0.06	1.1
Oquirrh-Stansbury, East	2	7	145	0	7	4	0	11	0.08	1.6
Oquirrh-Stansbury, West	3	11	22	4	4	0	0	8	0.36	0.7
Panguitch Lake	9	33	684	30	111	22	0	163	0.24	4.9
Paunsaugunt	2	7	167	26	11	7	0	44	0.26	6.3
Pine Valley, Nort	8	30	780	37	93	0	0	130	0.17	4.3
Pine Valley, South	5	19	178	7	19	4	0	30	0.17	1.6
Plateau, Boulder	9	33	795	74	119	7	0	200	0.25	6.1
Plateau, Fishlake	11	41	613	52	63	7	19	141	0.23	3.4
Plateau, Thousand Lakes	2	7	48	4	7	0	0	11	0.23	1.6
San Juan, Desert	1	4	260	33	7	0	0	40	0.15	10.0
San Juan, Mountains	4	15	724	22	82	0	0	104	0.14	6.9
San Rafael	0	0	—	—	—	—	—	—	—	—
South Slope, Bonanza/Diamond Mtn/Vernal	7	26	327	56	30	0	0	86	0.26	3.3
South Slope, Yellowstone	7	26	483	52	30	0	4	86	0.18	3.3
Southwest Desert	6	22	437	7	67	0	0	74	0.17	3.4
Wasatch Mtns, Avintaquin-Currant Creek	9	33	799	33	63	0	0	96	0.12	2.9
Wasatch Mtns, Cascade	2	7	85	7	11	0	0	18	0.21	2.6
Wasatch Mtns, Timpanogos	1	4	186	0	63	0	0	63	0.34	15.8
Wasatch Mtns, West-Strawberry	11	41	591	37	123	52	4	216	0.37	5.3
West Desert, Mtn Ranges	0	0	—	—	—	—	—	—	—	—
West Desert, Tintic-Vernon	6	22	260	19	19	7	0	45	0.17	2.0
Zion	10	37	1189	4	67	19	0	90	0.08	2.4
Unknown	4	15	386	10	84	37	0	131	0.34	8.7
Statewide*	166	617	21582	1169	2298	290	123	3880	0.18	6.3

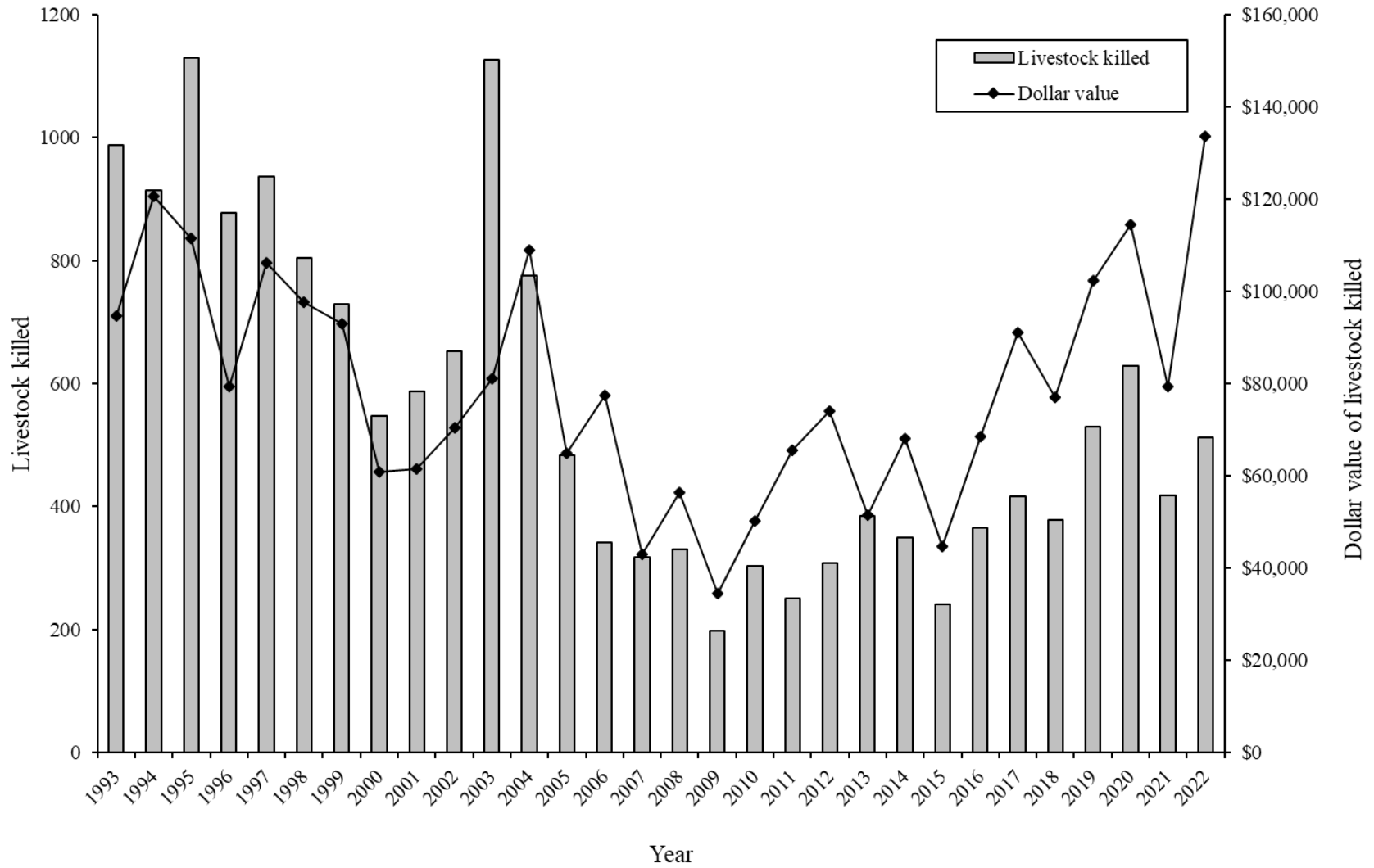
*Totals for sample size and pursuers afield are not the sum of the columns because pursuers could pursue on multiple units.

Number of livestock depredation incidents and cougars taken by Wildlife Services, Utah 1993–2022.



*Number of cougars taken by Wildlife Services is based on fiscal year, not cougar hunting season.

Livestock losses due to cougar depredation, Utah 1993–2022.



APPENDIX

HISTORICAL COUGAR HARVEST BY HUNT UNIT

Total cougar mortality for unit 22 – Beaver, Utah 1990–2018.

Year	Limited- entry permits*	Harvest- objective quota	Male harvest	Female harvest	Total harvest	Mean age	% permits filled	% quota filled	% females	% adult females	% ≥ 5 yrs old	Cougar treed / day	Wildlife Services harvest	Other mortality	Total harvest + mortality
1990	27	—	9	2	11	—	41	—	18	—	—	—	2	0	13
1991	27	—	7	4	11	—	41	—	36	—	—	—	0	0	11
1992	27	—	13	3	16	—	59	—	19	—	—	—	0	1	17
1993	31	—	12	5	17	—	55	—	29	—	—	—	0	0	17
1994	33	—	14	3	17	—	52	—	18	—	—	—	4	0	21
1995	37	—	16	9	25	—	68	—	36	—	—	—	2	4	31
1996	37	—	12	2	14	2.8	38	—	14	—	—	—	0	1	15
1997	45	—	11	15	26	3.5	58	—	58	—	—	—	1	2	29
1998	35	—	11	15	26	3.0	74	—	58	—	—	0.32	0	0	26
1999	25	—	10	2	12	3.7	48	—	17	—	—	0.37	0	0	12
2000	25	—	11	3	14	2.6	56	—	21	—	7	0.30	1	0	15
2001	25	—	9	5	14	4.5	56	—	36	—	23	0.35	1	0	15
2002	26	—	9	6	15	3.4	58	—	40	—	14	0.32	0	2	17
2003	25	—	7	5	12	4.8	48	—	42	—	33	0.27	0	0	12
2004	25	—	10	5	15	2.8	60	—	33	—	9	0.33	0	0	15
2005	19	15	10	8	18	3.1	53	53	44	—	8	0.22	0	1	19
2006	19	—	9	9	18	4.4	95	—	50	—	50	0.18	0	0	18
2007	18	—	10	11	21	2.4	117	—	52	—	11	0.26	0	0	21
2008	15	—	8	6	14	3.5	80	—	43	21	15	0.27	0	1	15
2009	15	—	12	3	15	3.2	87	—	20	13	20	0.29	0	1	16
2010	12	—	8	4	12	4.0	83	—	33	25	17	0.40	0	1	13
2011	13	—	10	6	16	4.1	115	—	38	38	31	0.34	0	3	19
2012	13	—	10	7	17	3.0	—	—	41	35	12	0.33	0	2	19
2013	13	—	4	6	10	4.7	—	—	60	50	40	0.24	0	0	10

*Includes limited-entry, conservation and expo permits.

Total cougar mortality for unit 22 – Beaver, Utah 1990–2018 (continued).

Year	Limited- entry permits*	Harvest- objective quota	Male harvest	Female harvest	Total harvest	Mean age	% permits filled	% quota filled	% females	% adult females	% ≥ 5 yrs old	Cougar treed / day	Wildlife Services harvest	Other mortality	Total harvest + mortality
2014	10	—	6	2	8	2.6	—	—	25	25	0	0.28	0	0	8
2015	10	—	6	4	10	3.0	90	—	40	30	11	0.23	0	0	10
2016	9	—	7	2	9	2.9	89	—	22	0	22	0.35	0	2	11
2017	8	—	8	0	8	4.6	100	—	0	0	63	0.61	0	3	11
2018	9	—	7	2	9	3.7	100	—	22	22	0	0.28	0	0	9
Mean	22	15	10	5	15	3.5	73	53	33	24	20	0.31	0	1	16

*Includes limited-entry, conservation and expo permits.

Total cougar mortality for unit 22a – Beaver, East, Utah 2019–2022.

Year	Limited-entry permits*	Harvest-objective quota	Male harvest	Female harvest	Total harvest	Mean age	% permits filled	% quota filled	% females	% adult females	% ≥ 5 yrs old	Cougar treed / day	Wildlife Services harvest	Other mortality	Total harvest + mortality
2019	10	—	10	2	12	4.6	120	—	17	17	42	0.66	1	4	17
2020	23	—	14	8	22	3.3	87	—	36	23	22	0.40	1	0	23
2021	30	—	16	5	21	2.3	70	—	24	14	5	0.36	0	0	21
2022	—	Unlimited	10	14	24	2.6	—	—	58	42	14	0.25	0	1	25
Mean	21	—	13	7	20	3.2	92	—	34	24	21	0.42	1	1	22

*Includes limited-entry, conservation and expo permits.

Total cougar mortality for unit 22b – Beaver, West, Utah 2019–2022.

Year	Limited-entry permits*	Harvest-objective quota	Male harvest	Female harvest	Total harvest	Mean age	% permits filled	% quota filled	% females	% adult females	% ≥ 5 yrs old	Cougar treed / day	Wildlife Services harvest	Other mortality	Total harvest + mortality
2019	—	3	3	2	5	3.4	—	167	40	20	20	1.13	0	0	5
2020	—	14	7	10	17	3.4	—	121	59	47	19	0.27	2	1	20
2021	—	Unlimited	7	3	10	2.2	—	—	30	10	10	0.40	0	0	10
2022	—	Unlimited	2	2	4	2.5	—	—	50	50	0	0.24	0	0	4
Mean	—	9	5	4	9	2.9	—	144	45	32	11	0.51	1	0	10

*Includes limited-entry, conservation and expo permits.

Total cougar mortality for unit 10 – Book Cliffs, Utah 1990–2002.

Year	Limited- entry permits*	Harvest- objective quota	Male harvest	Female harvest	Total harvest	Mean age	% permits filled	% quota filled	% females	% adult females	% ≥ 6 yrs old	Cougar treed / day	Wildlife Services harvest	Other mortality	Total harvest + mortality
1990	18	—	5	4	9	—	50	—	44	—	—	—	2	0	11
1991	18	—	11	2	13	—	72	—	15	—	—	—	0	1	14
1992	18	—	2	4	6	—	33	—	67	—	—	—	4	0	10
1993	18	—	11	1	12	—	67	—	8	—	—	—	1	0	13
1994	22	—	8	3	11	—	50	—	27	—	—	—	0	0	11
1995	26	—	10	4	14	—	54	—	29	—	—	—	1	1	16
1996	40	—	11	7	18	4.2	45	—	39	—	18	—	0	1	19
1997	—	30	14	14	28	4.5	—	93	50	—	37	—	3	0	31
1998	—	30	12	9	21	4.4	—	70	43	—	21	0.38	0	1	22
1999	—	30	12	9	21	3.7	—	70	43	—	11	0.19	1	1	23
2000	—	30	11	10	21	2.9	—	70	48	—	6	0.19	0	1	22
2001	—	30	10	13	23	3.6	—	77	57	—	13	0.19	0	0	23
2002	—	30	14	8	22	3.3	—	73	36	—	20	0.25	1	0	23
Mean	23	30	10	7	17	3.8	53	76	39	—	18	0.24	1	0	18

*Includes limited-entry, conservation and expo permits.

Total cougar mortality for unit 10a – Book Cliffs, East (formerly Book Cliffs, Bitter Creek), Utah 2003–2022.

Year	Limited-entry permits*	Harvest-objective quota	Male harvest	Female harvest	Total harvest	Mean age	% permits filled	% quota filled	% females	% adult females	% ≥ 5 yrs old	Cougar treed / day	Wildlife Services harvest	Other mortality	Total harvest + mortality
2003	—	30	14	5	19	4.2	—	63	26	—	41	0.21	0	0	19
2004	—	30	10	6	16	2.9	—	53	38	—	8	0.25	2	0	18
2005	—	30	4	1	5	1.7	—	17	20	—	0	0.13	1	0	6
2006	20	—	7	1	8	2.7	40	—	13	—	14	0.14	3	1	12
2007	13	—	3	1	4	1.0	31	—	25	—	0	0.27	0	0	4
2008	14	—	8	2	10	3.1	71	—	20	20	25	0.30	0	0	10
2009	14	—	11	3	14	3.2	100	—	21	14	23	0.19	0	0	14
2010	15	—	7	3	10	3.5	60	—	30	10	40	0.22	0	0	10
2011	15	—	4	3	7	3.4	47	—	43	14	29	0.25	0	0	7
2012	15	—	11	1	12	3.3	—	—	8	8	17	0.40	0	0	12
2013	15	—	12	2	14	4.2	—	—	14	14	38	0.62	0	0	14
2014	—	—	24	11	35	3.3	—	—	31	17	28	0.24	0	0	35
2015	—	20	14	6	20	3.2	—	100	30	30	26	0.24	0	0	20
2016	—	29	15	10	25	4.1	—	86	40	20	40	0.45	0	0	25
2017	—	29	18	11	29	3.7	—	100	38	28	29	0.54	0	0	29
2018	—	29	14	15	29	3.4	—	100	52	34	40	0.20	1	0	30
2019	29	—	15	4	19	3.5	14	—	21	16	26	0.34	0	0	19
2020	—	44	16	6	22	2.8	—	50	27	18	11	0.31	0	1	23
2021	—	Unlimited	10	10	20	2.7	—	—	50	40	13	0.31	0	0	20
2022	—	Unlimited	13	2	15	2.7	—	—	13	13	7	0.25	0	0	15
Mean	17	30	12	5	17	3.1	59	71	28	19	23	0.29	0	0	17

*Includes limited-entry, conservation and expo permits.

Total cougar mortality for unit 10b/11c – Book Cliffs, Rattlesnake Canyon/Nine Mile, South (formerly Book Cliffs, Rattlesnake Canyon), Utah 2003–2022.

Year	Limited-entry permits*	Harvest-objective quota	Male harvest	Female harvest	Total harvest	Mean age	% permits filled	% quota filled	% females	% adult females	% ≥ 5 yrs old	Cougar treed / day	Wildlife Services harvest	Other mortality	Total harvest + mortality
2003	—	4	0	0	0	—	—	0	—	—	—	—	3	0	3
2004	—	4	1	1	2	4.5	—	50	50	—	50	—	0	0	2
2005	—	4	1	0	1	—	—	25	0	—	—	0.04	0	0	1
2006	—	4	0	0	0	—	—	0	—	—	—	0.00	3	0	3
2007	—	4	0	0	0	—	—	0	—	—	—	0.00	0	0	0
2008	—	4	0	0	0	—	—	0	—	—	—	0.05	0	0	0
2009	—	4	1	0	1	4.0	—	25	0	0	0	0.18	0	0	1
2010	—	4	0	0	0	—	—	0	—	—	—	—	0	1	1
2011	—	2	2	0	2	3.5	—	100	0	0	0	0.16	0	0	2
2012	—	—	0	0	0	—	—	—	—	—	—	0.00	0	0	0
2013	—	—	0	0	0	—	—	—	—	—	—	0.25	0	0	0
2014	—	—	0	0	0	—	—	—	—	—	—	0.09	0	0	0
2015	—	Unlimited	1	0	1	—	—	—	0	0	—	0.04	0	0	1
2016	—	Unlimited	1	0	1	—	—	—	0	0	—	0.05	0	0	1
2017	—	Unlimited	0	0	0	—	—	—	—	—	—	0.74	0	0	0
2018	—	Unlimited	0	0	0	—	—	—	—	0	—	0.12	0	0	0
2019	—	Unlimited	0	1	1	1.0	—	—	100	0	0	0.19	0	0	1
2020	—	Unlimited	0	2	2	2.5	—	—	100	0	0	0.08	0	0	2
2021	—	Unlimited	0	0	0	—	—	—	—	—	—	0.27	0	1	1
2022	—	Unlimited	0	0	0	—	—	—	—	—	—	0.12	0	0	0
Mean	—	4	0	0	1	3.1	—	18	31	0	10	0.14	0	0	1

*Includes limited-entry, conservation and expo permits.

Total cougar mortality for unit 1b – Box Elder, Desert, Utah 1990–2022.

Year	Limited- entry permits*	Harvest- objective quota	Male harvest	Female harvest	Total harvest	Mean age	% permits filled	% quota filled	% females	% adult females	% ≥ 5 yrs old	Cougar treed / day	Wildlife Services harvest	Other mortality	Total harvest + mortality
1990	14	—	1	1	2	—	14	—	50	—	—	—	0	0	2
1991	14	—	4	1	5	—	36	—	20	—	—	—	0	0	5
1992	14	—	1	2	3	—	21	—	67	—	—	—	0	0	3
1993	9	—	1	1	2	—	22	—	50	—	—	—	0	0	2
1994	9	—	3	1	4	—	44	—	25	—	—	—	0	0	4
1995	9	—	7	1	8	—	89	—	13	—	—	—	0	0	8
1996	12	—	4	1	5	3.0	42	—	20	—	—	—	0	1	6
1997	8	—	4	3	7	3.5	88	—	43	—	—	—	1	1	9
1998	8	—	2	3	5	5.3	63	—	60	—	—	0.55	0	0	5
1999	8	—	1	4	5	2.3	63	—	80	—	0	0.35	0	0	5
2000	—	12	7	4	11	3.2	—	92	36	—	33	0.29	0	0	11
2001	—	12	8	7	15	2.4	—	125	47	—	13	0.47	4	1	20
2002	—	9	1	3	4	4.0	—	44	75	—	25	0.29	0	0	4
2003	12	—	4	2	6	5.8	50	—	33	—	33	0.46	0	1	7
2004	1	18	5	6	11	4.4	—	61	55	—	50	0.17	0	2	13
2005	—	18	3	3	6	3.6	—	33	50	—	20	0.13	1	0	7
2006	18	—	1	2	3	3.3	17	—	67	—	0	0.03	0	1	4
2007	12	—	3	2	5	2.3	42	—	40	—	0	0.27	0	2	7
2008	12	—	1	3	4	1.8	33	—	75	0	0	0.13	0	0	4
2009	10	—	0	1	1	2.0	10	—	100	0	0	0.28	0	0	1
2010	5	—	0	2	2	4.0	40	—	100	50	50	0.44	0	0	2
2011	6	—	1	1	2	3.0	33	—	50	50	0	0.24	0	0	2
2012	6	—	0	1	1	1.0	—	—	100	0	0	0.24	1	2	4
2013	6	—	2	1	3	2.7	—	—	33	33	0	0.19	0	1	4

*Includes limited-entry, conservation and expo permits.

Total cougar mortality for unit 1b – Box Elder, Desert, Utah 1990–2022 (continued).

Year	Limited- entry permits*	Harvest- objective quota	Male harvest	Female harvest	Total harvest	Mean age	% permits filled	% quota filled	% females	% adult females	% ≥ 5 yrs old	Cougar treed / day	Wildlife Services harvest	Other mortality	Total harvest + mortality
2014	6	—	1	0	1	4.0	—	—	0	0	0	0.11	0	1	2
2015	6	—	0	0	0	—	0	—	—	—	—	0.11	0	0	0
2016	6	—	2	0	2	3.0	33	—	0	0	0	0.38	0	0	2
2017	5	—	0	2	2	7.5	40	—	100	100	100	0.31	1	4	7
2018	5	—	4	2	6	4.3	120	—	33	33	11	0.12	0	9	15
2019	—	10	6	5	11	2.7	—	110	45	27	11	0.28	0	4	15
2020	—	18	10	5	15	3.9	—	83	33	27	23	0.40	0	2	17
2021	—	18	10	9	19	2.9	—	106	47	21	13	0.22	2	7	28
2022	—	17	5	2	7	2.1	—	41	29	43	0	0.31	0	5	12
Mean	9	15	3	2	6	3.4	41	77	50	27	17	0.27	0	1	7

*Includes limited-entry, conservation and expo permits.

Total cougar mortality for unit 1c – Box Elder, Pilot Mtn, Utah 1998–2022.

Year	Limited-entry permits*	Harvest-objective quota	Male harvest	Female harvest	Total harvest	Mean age	% permits filled	% quota filled	% females	% adult females	% ≥ 5 yrs old	Cougar treed / day	Wildlife Services harvest	Other mortality	Total harvest + mortality
1998	6	3	0	0	0	—	0	0	—	—	—	—	0	0	0
1999	—	3	1	0	1	—	—	33	0	—	—	—	0	0	1
2000	—	3	0	0	0	—	—	0	—	—	—	—	0	0	0
2001	—	3	0	0	0	—	—	0	—	—	—	—	0	0	0
2002	—	4	1	2	3	4.5	—	75	67	—	50	0.00	0	0	3
2003	—	4	1	1	2	—	—	50	50	—	50	0.17	0	0	2
2004	—	4	1	0	1	—	—	25	0	—	—	0.25	0	0	1
2005	—	4	2	0	2	3.0	—	50	0	—	0	0.22	0	0	2
2006	—	4	0	0	0	—	—	0	—	—	—	0.00	0	0	0
2007	—	4	0	0	0	—	—	0	—	—	—	0.00	0	0	0
2008	—	4	0	0	0	—	—	0	—	—	—	—	0	0	0
2009	—	2	0	1	1	2.0	—	50	100	0	0	—	0	0	1
2010	—	2	0	0	0	—	—	0	—	—	—	—	0	0	0
2011	—	2	1	1	2	3.0	—	100	—	0	0	0.23	0	0	2
2012	—	—	0	1	1	4.0	—	—	100	100	0	0.00	0	0	1
2013	—	—	1	0	1	2.0	—	—	0	0	0	0.00	0	0	1
2014	4	—	0	0	0	—	—	—	—	—	—	—	0	0	0
2015	4	—	1	0	1	6.0	25	—	0	0	100	—	0	0	1
2016	—	6	0	0	0	—	—	0	—	—	—	—	0	0	0
2017	—	6	0	0	0	—	—	0	—	—	—	0.00	0	0	0
2018	—	6	0	0	0	—	—	0	—	—	—	0.30	0	2	2
2019	—	6	0	0	0	—	—	0	—	—	—	—	0	0	0
2020	—	6	0	0	0	—	—	0	—	—	—	—	0	0	0
2021	—	6	0	0	0	—	—	0	—	—	—	0.00	1	0	1
2022	—	6	0	0	0	—	—	—	—	—	—	0.00	0	0	0
Mean	5	4	0	0	1	3.5	8	20	35	20	25	0.09	0	0	1

*Includes limited-entry, conservation and expo permits.

Total cougar mortality for unit 1a – Box Elder, Raft River, Utah 1997–2022.

Year	Limited- entry permits*	Harvest- objective quota	Male harvest	Female Harvest	Total harvest	Mean age	% permits filled	% quota filled	% females	% adult females	% ≥ 5 yrs old	Cougar treed / day	Wildlife Services harvest	Other mortality	Total harvest + mortality
1997	8	—	3	3	6	3.3	75	—	50	—	—	—	1	0	7
1998	5	—	2	2	4	3.5	80	—	50	—	—	0.55	0	1	5
1999	5	—	1	2	3	2.3	60	—	67	—	0	0.35	2	0	5
2000	—	8	5	3	8	3.2	—	100	38	—	17	0.29	0	0	8
2001	—	8	3	3	6	2.6	—	75	50	—	0	0.46	0	1	7
2002	6	—	4	0	4	2.8	67	—	0	—	0	0.52	0	0	4
2003	6	—	2	3	5	3.0	83	—	60	—	0	0.30	1	0	6
2004	—	10	6	4	10	2.8	—	100	40	—	0	0.14	0	0	10
2005	—	10	4	4	8	2.0	—	80	50	—	0	0.11	0	0	8
2006	8	—	3	1	4	3.0	50	—	25	—	0	0.06	0	0	4
2007	6	—	0	1	1	10.0	17	—	100	—	100	0.16	0	0	1
2008	6	—	2	0	2	4.0	33	—	0	0	50	0.17	0	0	2
2009	7	—	3	1	4	2.8	57	—	25	0	0	0.46	0	0	4
2010	6	—	4	0	4	2.8	67	—	0	0	0	0.75	0	1	5
2011	5	—	4	0	4	4.5	80	—	0	0	25	0.24	0	0	4
2012	5	—	3	1	4	2.3	—	—	25	0	0	0.22	0	0	4
2013	5	—	2	0	2	5.0	—	—	0	0	50	0.55	0	0	2
2014	6	—	3	1	4	3.8	—	—	25	25	25	0.34	0	0	4
2015	6	—	4	0	4	4.0	67	—	0	0	25	0.56	0	2	6
2016	6	—	2	1	3	7.0	50	—	33	33	100	0.50	0	0	3
2017	6	—	5	0	5	4.0	83	—	0	0	50	0.39	0	0	5
2018	8	—	8	0	8	3.3	100	—	0	0	14	0.37	0	0	8
2019	10	—	4	3	7	3.1	70	—	43	29	14	0.41	0	0	7
2020	10	—	3	2	5	3.0	50	—	40	20	0	0.15	0	2	7
2021	10	—	3	2	5	3.6	50	—	40	40	20	0.19	0	3	8
2022	9	—	5	0	5	2.5	56	—	0	0	0	0.24	0	1	6
Mean	7	9	3	1	5	3.6	63	89	29	10	20	0.34	0	0	5

*Includes limited-entry, conservation and expo permits.

Total cougar mortality for unit 2 – Cache, Utah 1996–2022.

Year	Limited-entry permits*	Harvest-objective quota	Male harvest	Female harvest	Total harvest	Mean age	% permits filled	% quota filled	% females	% adult females	% ≥ 5 yrs old	Cougar treed / day	Wildlife Services harvest	Other mortality	Total harvest + mortality
1996	20	—	10	6	16	4.0	80	—	38	—	—	—	3	1	20
1997	20	—	8	6	14	3.6	70	—	43	—	—	—	2	1	17
1998	19	—	8	3	11	3.5	58	—	27	—	—	0.47	0	1	12
1999	28	—	7	11	18	1.9	64	—	61	—	0	0.41	0	1	19
2000	—	35	17	19	36	2.5	—	103	53	—	16	0.21	2	0	38
2001	—	35	15	12	27	2.4	—	77	44	—	7	0.26	0	2	29
2002	—	12	2	4	6	2.0	—	50	67	—	0	0.07	1	1	8
2003	15	10	4	11	15	2.0	53	70	73	—	0	0.46	0	0	15
2004	—	19	9	6	15	2.8	—	79	40	—	9	0.06	0	1	16
2005	—	19	8	4	12	1.4	—	63	33	—	0	0.08	0	1	13
2006	19	—	3	5	8	1.4	42	—	63	—	0	0.15	0	2	10
2007	14	—	2	6	8	2.1	57	—	75	—	0	0.26	0	0	8
2008	14	—	7	3	10	2.3	71	—	30	10	0	0.08	1	1	12
2009	14	—	7	5	12	3.2	86	—	42	25	27	0.23	0	5	17
2010	14	—	4	6	10	4.1	71	—	60	40	33	0.16	0	1	11
2011	15	—	7	3	10	2.3	67	—	30	20	0	0.21	1	0	11
2012	15	—	6	0	6	2.0	—	—	0	0	0	0.18	0	2	8
2013	15	—	4	3	7	3.4	—	—	43	29	14	0.17	1	2	10
2014	15	—	5	2	7	3.7	—	—	29	29	33	0.16	1	1	9
2015	15	—	9	3	12	2.8	73	—	25	25	18	0.22	0	4	16
2016	—	20	12	8	20	4.3	—	100	40	10	42	0.11	0	3	23
2017	—	22	15	6	21	2.4	—	95	29	10	5	0.28	1	5	27
2018	—	25	15	12	27	2.6	—	108	44	11	13	0.23	0	4	31
2019	—	25	11	14	25	3.9	—	100	56	32	22	0.39	5	4	34
2020	—	38	13	15	28	2.7	—	71	54	32	9	0.20	3	15	46

*Includes limited-entry, conservation and expo permits.

Total cougar mortality for unit 2 – Cache, Utah 1996–2022 (continued).

Year	Limited-entry permits*	Harvest-objective quota	Male harvest	Female harvest	Total harvest	Mean age	% permits filled	% quota filled	% females	% adult females	% ≥ 5 yrs old	Cougar treed / day	Wildlife Services harvest	Other mortality	Total harvest + mortality
2021	—	Unlimited	18	18	36	1.9	—	—	50	17	0	0.25	0	3	39
2022	—	Unlimited	5	11	16	1.9	—	—	69	50	0	0.22	0	4	20
Mean	17	24	9	7	16	2.7	61	83	45	21	10	0.22	1	2	19

*Includes limited-entry, conservation and expo permits.

Total cougar mortality for unit 16a – Central Mtns, Nebo, Utah 1990–2022.

Year	Limited-entry permits*	Harvest-objective quota	Male harvest	Female harvest	Total harvest	Mean age	% permits filled	% quota filled	% females	% adult females	% ≥ 5 yrs old	Cougar treed / day	Wildlife Services harvest	Other mortality	Total harvest + mortality
1990	26	—	13	3	16	—	62	—	19	—	—	—	16	0	32
1991	26	—	12	10	22	—	85	—	45	—	—	—	13	0	35
1992	26	—	10	5	15	—	58	—	33	—	—	—	8	0	23
1993	34	—	21	6	27	—	79	—	22	—	—	—	7	1	35
1994	34	—	12	7	19	—	56	—	37	—	—	—	11	0	30
1995	52	—	14	17	31	—	60	—	55	—	—	—	2	4	37
1996	43	—	5	11	16	2.9	37	—	69	—	—	—	2	0	18
1997	43	—	16	13	29	2.9	67	—	45	—	—	—	5	1	35
1998	34	—	9	10	19	4.8	56	—	53	—	—	0.40	1	0	20
1999	24	—	12	5	17	3.2	71	—	29	—	—	0.34	0	0	17
2000	24	—	11	3	14	2.7	58	—	21	—	23	0.37	0	0	14
2001	24	—	11	4	15	3.3	63	—	27	—	20	0.21	10	1	26
2002	24	—	10	9	19	3.5	79	—	47	—	24	0.26	2	0	21
2003	18	—	7	8	15	4.5	83	—	53	—	21	0.49	5	0	20
2004	18	—	9	7	16	3.1	89	—	44	—	20	0.44	2	3	21
2005	18	—	6	3	9	2.6	50	—	33	—	0	0.35	2	0	11
2006	12	—	4	3	7	3.3	58	—	43	—	17	0.21	4	0	11
2007	11	—	4	1	5	3.6	45	—	20	—	40	0.10	1	3	9
2008	9	—	3	1	4	3.8	44	—	25	0	25	0.53	5	0	9
2009	9	—	6	1	7	2.7	78	—	14	14	0	0.21	6	1	14
2010	9	—	5	2	7	2.7	78	—	29	29	14	0.38	2	2	11
2011	15	—	9	10	19	3.9	127	—	53	47	26	0.21	5	0	24
2012	15	—	9	5	14	3.4	—	—	36	29	14	0.25	6	1	21
2013	15	—	6	3	9	4.5	—	—	33	33	38	0.28	1	1	11

*Includes limited-entry, conservation and expo permits. Before 2003, subunit was named "Manti, Nebo".

Total cougar mortality for unit 16a – Central Mtns, Nebo, Utah 1990–2022 (continued).

Year	Limited- entry permits*	Harvest- objective quota	Male harvest	Female harvest	Total harvest	Mean age	% permits filled	% quota filled	% females	% adult females	% ≥ 5 yrs old	Cougar treed / day	Wildlife Services harvest	Other mortality	Total harvest + mortality
2014	16	—	7	6	13	3.3	—	—	46	38	20	0.14	4	1	18
2015	9	—	5	2	7	2.6	56	—	29	14	29	0.44	2	0	9
2016	9	—	8	3	11	3.4	122	—	27	9	22	0.24	1	0	12
2017	12	—	10	5	15	3.2	125	—	33	13	14	0.37	4	2	21
2018	12	—	13	2	15	2.2	125	—	13	7	0	0.24	4	2	21
2019	12	—	9	3	12	3.2	100	—	25	8	17	0.32	4	0	16
2020	15	—	10	4	14	3.2	93	—	29	29	21	0.37	3	0	17
2021	15	—	7	1	8	1.8	47	—	13	0	0	0.37	7	2	17
2022	15	—	7	5	12	2.3	80	—	42	25	22	0.24	0	0	12
Mean	21	—	9	5	14	3.2	75	—	35	20	19	0.31	4	1	20

*Includes limited-entry, conservation and expo permits. Before 2003, subunit was named "Manti, Nebo".

Total cougar mortality for unit 16a1 – Central Mtns, Nebo-West Face, Utah 2003–2022.

Year	Limited-entry permits*	Harvest-objective quota	Male harvest	Female harvest	Total harvest	Mean age	% permits filled	% quota filled	% females	% adult females	% ≥ 5 yrs old	Cougar treed / day	Wildlife Services harvest	Other mortality	Total harvest + mortality
2003	—	20	10	10	20	2.9	—	100	50	—	21	0.46	0	0	20
2004	—	20	3	12	15	2.7	—	75	80	—	25	0.27	0	1	16
2005	—	20	6	5	11	1.9	—	55	45	—	0	0.10	0	0	11
2006	—	20	5	9	14	2.4	—	70	64	—	0	0.11	0	0	14
2007	20	—	8	3	11	1.9	55	—	27	—	0	0.39	0	0	11
2008	20	—	4	3	7	2.3	35	—	43	0	0	0.14	0	0	7
2009	20	—	12	3	15	3.5	75	—	20	13	23	0.19	0	0	15
2010	21	—	3	1	5	2.2	24	—	20	0	0	0.09	0	0	5
2011	25	—	9	8	17	4.0	68	—	47	35	31	0.17	0	0	17
2012	25	—	7	4	11	2.3	—	—	36	27	0	0.25	0	0	11
2013	25	—	4	4	8	3.3	—	—	50	38	14	0.22	0	1	9
2014	25	—	4	5	9	2.3	—	—	56	33	0	0.42	0	0	9
2015	10	—	5	2	7	3.0	70	—	29	14	14	0.17	0	0	7
2016	10	—	2	0	2	4.0	20	—	0	0	50	0.00	0	0	2
2017	10	—	9	1	10	3.5	100	—	10	10	30	0.12	0	0	10
2018	12	—	5	2	7	2.0	58	—	29	14	0	0.09	0	0	7
2019	15	—	9	4	13	3.1	87	—	31	15	18	0.17	0	0	13
2020	18	—	6	3	9	3.3	50	—	33	22	14	0.08	0	0	9
2021	—	Unlimited	3	1	4	2.5	—	—	25	0	0	0.14	0	0	4
2022	—	Unlimited	5	3	8	2.0	—	—	38	13	0	0.11	0	0	8
Mean	18	21	6	4	10	2.8	54	68	37	15	12	0.18	0	0	10

*Includes limited-entry, conservation and expo permits.

Total cougar mortality for unit 16b – Central Mtns, North Manti, Utah 1990–2003.

Year	Limited- entry permits*	Harvest- objective quota	Male harvest	Female harvest	Total harvest	Mean age	% permits filled	% quota filled	% females	% adult females	% ≥ 6 yrs old	Cougar treed / day	Wildlife Services harvest	Other mortality	Total harvest + mortality
1990	20	—	6	6	12	—	60	—	50	—	—	—	3	1	16
1991	20	—	9	2	11	—	55	—	18	—	—	—	2	1	14
1992	20	—	10	1	11	—	55	—	9	—	—	—	4	5	20
1993	35	—	15	8	23	—	66	—	35	—	—	—	3	5	31
1994	42	—	17	8	25	—	60	—	32	—	—	—	1	0	26
1995	52	—	20	10	30	—	58	—	33	—	—	—	2	3	35
1996	49	—	14	14	28	2.3	57	—	50	—	7	—	0	0	28
1997	48	—	13	10	23	3.2	48	—	43	—	8	—	1	0	24
1998	45	—	7	10	17	3.7	38	—	59	—	17	0.40	0	2	19
1999	40	—	11	13	24	3.2	60	—	54	—	11	0.34	4	0	28
2000	28	—	11	7	18	2.7	64	—	39	—	3	0.37	5	0	23
2001	28	—	11	7	18	2.8	64	—	39	—	6	0.18	0	2	20
2002	27	—	11	6	17	3.5	63	—	35	—	18	0.22	5	2	24
2003	28	—	9	6	15	2.7	54	—	40	—	0	0.24	3	7	25
Mean	34	—	12	8	19	3.0	57	—	38	—	9	0.29	2	2	24

*Includes limited-entry, conservation and expo permits.
Before 2003, subunit was named "Manti, North Manti".

Total cougar mortality for Unit 16b2 – Central Mtns, Northeast Manti, Utah 2004–2022.

Year	Limited-entry permits*	Harvest-objective quota	Male harvest	Female harvest	Total harvest	Mean age	% permits filled	% quota filled	% females	% adult females	% ≥ 5 yrs old	Cougar treed / day	Wildlife Services harvest	Other mortality	Total harvest + mortality
2004	—	20	9	11	20	4.7	—	100	55	—	44	—	0	0	20
2005	20	10	3	5	8	3.7	20	40	63	—	29	0.10	1	0	9
2006	18	—	5	1	6	2.4	33	—	17	—	0	0.27	1	0	7
2007	17	—	3	2	5	2.2	29	—	40	—	0	0.14	0	0	5
2008	13	—	4	1	5	4.6	31	—	20	20	40	0.33	1	0	6
2009	13	—	5	2	7	3.4	54	—	29	14	14	0.10	0	0	7
2010	13	—	3	8	11	2.8	85	—	73	45	0	0.13	1	0	12
2011	13	—	4	6	10	3.7	77	—	60	40	40	0.21	0	1	11
2012	13	—	2	2	4	3.3	—	—	50	50	25	0.23	0	0	4
2013	13	—	4	3	7	5.7	—	—	43	43	83	0.24	0	0	7
2014	10	—	6	0	6	2.8	—	—	0	0	17	0.31	0	0	6
2015	10	—	3	4	7	2.5	60	—	57	29	17	0.29	1	0	8
2016	10	—	3	2	5	3.4	50	—	40	0	20	0.68	2	0	7
2017	13	—	3	3	6	3.3	46	—	50	17	33	0.28	0	0	6
2018	13	—	8	2	10	3.6	77	—	20	20	36	0.17	1	0	11
2019	16	—	5	8	13	2.7	81	—	62	46	9	0.10	1	0	14
2020	16	—	7	2	9	4.7	56	—	22	22	57	0.13	0	0	9
2021	—	Unlimited	8	10	18	2.7	—	—	56	28	7	0.20	0	3	21
2022	—	Unlimited	5	2	7	2.5	—	—	29	0	0	0.05	0	0	7
Mean	14	15	5	4	9	3.4	53	70	41	24	25	0.23	0	0	9

*Includes limited-entry, conservation and expo permits.

Total cougar mortality for unit 16b1 – Central Mtns, Northwest Manti, Utah 2004–2022.

Year	Limited- entry permits*	Harvest- objective quota	Male harvest	Female harvest	Total harvest	Mean age	% permits filled	% quota filled	% females	% adult females	% ≥ 5 yrs old	Cougar treed / day	Wildlife Services harvest	Other mortality	Total harvest + mortality
2004	16	—	6	2	8	2.7	50	—	25	—	0	—	0	1	9
2005	17	—	8	2	10	1.6	59	—	20	—	0	0.18	1	1	12
2006	16	—	4	2	6	3.2	38	—	33	—	17	0.35	0	0	6
2007	12	—	1	4	5	4.0	42	—	80	—	40	0.50	0	0	5
2008	10	—	4	0	4	2.5	40	—	0	0	0	0.43	0	0	4
2009	10	—	6	0	6	3.5	60	—	0	0	17	0.21	0	1	7
2010	10	—	8	1	9	2.7	90	—	11	0	11	0.10	0	0	9
2011	13	—	7	3	10	4.1	77	—	30	30	40	0.30	0	0	10
2012	13	—	5	3	8	2.8	—	—	38	25	0	0.06	0	2	10
2013	13	—	5	3	8	3.4	—	—	38	25	14	0.34	0	0	8
2014	10	—	6	6	12	3.3	—	—	50	33	18	0.23	1	0	13
2015	10	—	4	2	6	2.3	60	—	33	33	0	0.19	0	0	6
2016	9	—	4	2	6	6.0	56	—	33	33	40	0.62	1	0	7
2017	9	—	4	2	6	3.2	67	—	33	33	0	0.40	3	0	9
2018	9	—	8	3	11	4.0	122	—	27	27	22	0.26	0	0	11
2019	11	—	6	5	11	2.7	100	—	45	18	0	0.13	0	1	12
2020	12	—	5	3	8	3.0	67	—	38	38	0	0.45	0	1	9
2021	—	Unlimited	5	9	14	2.2	—	—	64	29	9	0.46	1	0	15
2022	—	Unlimited	5	2	7	1.7	—	—	29	29	0	0.13	0	1	8
Mean	12	—	5	3	8	3.1	68	—	33	22	12	0.30	0	0	9

*Includes limited-entry, conservation and expo permits.

Total cougar mortality for unit 16c – Central Mtns, South Manti, Utah 1990–2003.

Year	Limited- entry permits*	Harvest- objective quota	Male harvest	Female harvest	Total harvest	Mean age	% permits filled	% quota filled	% females	% adult females	% ≥ 6 yrs old	Cougar treed / day	Wildlife Services harvest	Other mortality	Total harvest + mortality
1990	29	—	12	3	15	—	52	—	20	—	—	—	2	1	18
1991	29	—	12	5	17	—	59	—	29	—	—	—	6	0	23
1992	29	—	14	3	17	—	59	—	18	—	—	—	5	1	23
1993	33	—	25	6	31	—	94	—	19	—	—	—	5	2	38
1994	37	—	20	9	29	—	78	—	31	—	—	—	4	0	33
1995	56	—	17	18	35	—	63	—	51	—	—	—	5	9	49
1996	44	—	13	14	27	3.4	61	—	52	—	7	—	3	1	31
1997	36	—	19	6	25	2.8	69	—	24	—	8	—	3	0	28
1998	40	—	15	9	24	2.4	60	—	38	—	17	0.40	3	2	29
1999	25	—	10	6	16	3.2	64	—	38	—	11	0.34	1	0	17
2000	20	—	10	5	15	2.7	75	—	33	—	3	0.37	0	0	15
2001	20	—	8	7	15	3.7	75	—	47	—	21	0.34	3	1	19
2002	21	—	13	4	17	3.7	81	—	24	—	13	0.31	1	1	19
2003	20	—	14	4	18	3.6	90	—	22	—	14	0.28	11	1	30
Mean	31	—	14	7	22	3.2	70	—	32	—	12	0.34	4	1	27

*Includes limited-entry, conservation and expo permits.
Before 2003, subunit was named "Manti, South Manti".

Total cougar mortality for Unit 16c2 – Central Mtns, Southeast Manti, Utah 2004–2022.

Year	Limited-entry permits*	Harvest-objective quota	Male harvest	Female harvest	Total harvest	Mean age	% permits filled	% quota filled	% females	% adult females	% ≥ 5 yrs old	Cougar treed / day	Wildlife Services harvest	Other mortality	Total harvest + mortality
2004	—	20	9	11	20	3.8	—	100	55	—	28	—	4	1	25
2005	19	10	7	10	17	3.6	37	100	59	—	29	0.13	1	1	19
2006	18	—	3	1	4	3.0	22	—	25	—	0	0.14	2	0	6
2007	18	—	6	1	7	3.0	39	—	14	—	17	0.16	0	0	7
2008	12	—	3	2	5	2.0	33	—	40	0	0	0.48	0	1	6
2009	12	—	7	1	8	3.5	58	—	13	0	25	0.60	0	0	8
2010	11	—	5	6	11	4.5	100	—	55	36	20	0.32	0	0	11
2011	11	—	9	2	11	4.4	91	—	18	18	55	0.21	0	1	12
2012	11	—	14	3	17	3.5	—	—	18	18	18	0.47	1	0	18
2013	11	—	7	3	10	4.9	—	—	30	30	30	0.27	0	1	11
2014	10	—	9	2	11	2.3	100	—	18	18	13	0.13	0	0	11
2015	10	—	6	4	10	4.2	90	—	40	30	22	0.25	0	4	14
2016	13	—	8	3	11	4.6	77	—	27	18	38	0.24	0	3	14
2017	16	—	13	2	15	3.9	94	—	13	7	33	0.17	0	1	16
2018	18	—	13	4	17	3.6	94	—	24	24	29	0.30	0	0	17
2019	20	—	14	4	18	2.9	90	—	22	17	12	0.19	0	1	19
2020	26	—	8	4	12	3.0	46	—	33	25	22	0.25	0	0	12
2021	—	Unlimited	11	16	27	2.8	—	—	59	48	17	0.31	0	0	27
2022	—	Unlimited	5	3	8	2.5	—	—	38	38	29	0.23	0	0	8
Mean	15	15	8	4	13	3.5	76	100	32	22	23	0.27	0	1	14

*Includes limited-entry, conservation and expo permits.

Total cougar mortality for unit 16c1 – Central Mtns, Southwest Manti, Utah 2004–2022.

Year	Limited-entry permits*	Harvest-objective quota	Male harvest	Female harvest	Total harvest	Mean age	% permits filled	% quota filled	% females	% adult females	% ≥ 5 yrs old	Cougar treed / day	Wildlife Services harvest	Other mortality	Total harvest + mortality
2004	16	—	10	3	13	2.8	81	—	23	—	0	—	11	5	29
2005	16	—	8	2	10	2.0	63	—	20	—	0	0.32	1	0	11
2006	11	—	7	4	11	2.9	100	—	36	—	10	0.32	3	0	14
2007	8	—	3	3	6	3.5	75	—	50	—	17	0.30	0	0	6
2008	5	—	4	1	5	3.4	80	—	20	20	20	0.38	0	0	5
2009	5	—	6	0	6	3.0	60	—	0	0	0	0.43	0	2	8
2010	5	—	8	3	11	3.1	200	—	27	27	10	0.95	1	0	12
2011	8	—	7	1	8	3.6	100	—	13	13	25	0.17	2	1	11
2012	8	—	14	5	19	2.8	—	—	26	16	5	0.29	2	0	21
2013	8	—	6	7	13	4.2	—	—	54	38	38	0.25	1	0	14
2014	6	—	5	3	8	4.3	—	—	38	25	14	0.36	3	0	11
2015	6	—	3	0	3	2.3	33	—	0	0	0	0.57	0	0	3
2016	5	—	5	2	7	5.2	60	—	29	29	67	0.25	0	0	7
2017	8	—	9	1	10	3.4	125	—	10	0	20	0.05	0	0	10
2018	12	—	8	4	12	3.2	100	—	33	25	13	0.27	1	0	13
2019	18	—	11	8	19	3.3	106	—	42	32	13	0.19	1	1	21
2020	18	—	15	3	18	2.3	100	—	17	11	6	0.40	0	1	19
2021	—	Unlimited	12	6	18	2.2	—	—	33	28	0	0.13	1	0	19
2022	—	Unlimited	5	3	8	2.6	—	—	38	38	22	0.14	0	1	9
Mean	10	—	8	3	11	3.2	104	—	27	20	15	0.32	1	1	13

*Includes limited-entry, conservation and expo permits.

Total cougar mortality for unit 6/7 – Chalk Creek/Kamas, Utah 1996–2019.

Year	Limited-entry permits*	Harvest-objective quota	Male harvest	Female harvest	Total harvest	Mean age	% permits filled	% quota filled	% females	% adult females	% ≥ 5 yrs old	Cougar treed / day	Wildlife Services harvest	Other mortality	Total harvest + mortality
1996	10	—	4	3	7	6.0	70	—	43	—	—	—	1	0	8
1997	10	—	2	4	6	3.3	60	—	67	—	—	—	0	1	7
1998	10	—	4	4	8	2.2	80	—	50	—	—	0.39	0	3	11
1999	14	—	7	5	12	2.6	86	—	42	—	—	0.31	0	0	12
2000	—	12	8	4	12	2.5	—	100	33	—	—	0.57	0	0	12
2001	—	12	3	6	9	3.9	—	75	67	—	—	0.62	1	0	10
2002	—	12	6	5	11	3.2	—	92	45	—	27	0.47	6	1	18
2003	17	—	8	7	15	2.7	88	—	47	—	21	0.60	17	2	34
2004	12	—	7	3	10	2.6	83	—	30	—	14	0.33	3	0	13
2005	11	—	5	3	8	2.6	73	—	38	—	0	0.44	14	1	23
2006	10	—	5	4	9	2.2	90	—	44	—	20	0.23	12	0	21
2007	11	—	4	6	10	3.0	91	—	60	—	38	0.64	1	0	11
2008	8	—	4	5	9	3.6	75	—	56	22	33	0.31	2	0	11
2009	8	—	7	4	11	3.4	100	—	36	36	20	0.30	1	2	14
2010	5	—	4	4	8	2.3	80	—	50	25	0	0.67	7	3	18
2011	10	—	4	5	9	3.6	60	—	56	33	25	0.35	3	5	17
2012	10	—	5	4	9	3.3	80	—	44	22	14	0.26	8	1	18
2013	10	—	5	3	8	2.5	80	—	38	25	17	0.28	0	4	12
2014	7	—	5	1	6	3.2	86	—	17	17	20	0.20	0	0	6
2015	8	—	5	2	7	2.7	88	—	29	0	17	0.12	0	0	7
2016	8	—	6	0	6	7.4	75	—	0	0	100	0.36	8	1	15
2017	10	—	8	1	9	3.0	90	—	11	0	13	0.26	11	0	20
2018	12	—	6	2	8	2.3	67	—	25	13	0	0.45	3	0	11
2019	12	—	9	3	12	3.4	100	—	25	17	10	0.16	2	1	15
Mean	10	12	5	4	9	3.2	80	89	40	19	22	0.38	4	1	14

*Includes limited-entry, conservation and expo permits.

Total cougar mortality for unit 6 – Chalk Creek, Utah 2020–2022.

Year	Limited- entry permits*	Harvest- objective quota	Male harvest	Female harvest	Total harvest	Mean age	% permits filled	% quota filled	% females	% adult females	% ≥ 5 yrs old	Cougar treed / day	Wildlife Services harvest	Other mortality	Total harvest + mortality
2020	—	30	15	12	27	2.7	—	90	44	22	14	0.31	2	7	36
2021	—	30	12	17	29	2.2	—	97	59	17	7	0.30	1	0	30
2022	—	28	13	12	25	1.8	—	89	48	32	0	0.24	0	1	26
Mean	—	29	13	14	27	2.2	—	92	50	24	7	0.31	1	3	23

*Includes limited-entry, conservation and expo permits.

Total cougar mortality for unit 5 – East Canyon, Utah 1996–2022.

Year	Limited-entry permits*	Harvest-objective quota	Male harvest	Female harvest	Total harvest	Mean age	% permits filled	% quota filled	% females	% adult females	% ≥ 5 yrs old	Cougar treed / day	Wildlife Services harvest	Other mortality	Total harvest + mortality
1996	8	—	4	1	5	3.7	63	—	20	—	—	—	0	0	5
1997	18	—	6	7	13	2.5	72	—	54	—	—	—	0	3	16
1998	22	—	7	9	16	2.6	73	—	56	—	—	0.30	0	3	19
1999	16	—	6	4	10	1.3	63	—	40	—	0	0.39	0	0	10
2000	18	—	3	6	9	2.3	50	—	67	—	17	0.00	0	1	10
2001	2	10	4	6	10	2.1	0	100	60	—	0	0.40	0	0	10
2002	—	7	4	4	8	2.3	—	114	50	—	0	0.25	0	0	8
2003	10	—	3	3	6	2.5	60	—	50	—	0	0.17	0	0	6
2004	9	—	1	3	4	3.0	44	—	75	—	0	0.08	0	0	4
2005	10	—	3	4	7	2.1	70	—	57	—	0	0.14	0	1	8
2006	8	—	2	2	4	3.0	50	—	50	—	33	0.07	1	0	5
2007	7	—	1	1	2	2.0	29	—	50	—	0	0.79	0	2	4
2008	5	—	2	0	2	2.0	40	—	0	0	0	0.09	0	0	2
2009	5	—	0	0	0	—	0	—	—	—	—	0.00	0	1	1
2010	2	—	1	0	1	5.0	50	—	0	0	100	0.19	0	0	1
2011	4	—	2	1	3	3.3	75	—	33	33	0	0.20	0	0	3
2012	4	—	1	2	3	1.3	75	—	67	0	0	0.76	0	0	3
2013	4	—	3	1	4	2.3	100	—	25	0	0	0.04	0	1	5
2014	4	—	2	2	4	1.3	100	—	50	0	0	0.45	0	0	4
2015	4	—	3	1	4	4.0	100	—	25	25	25	0.31	0	0	4
2016	6	—	5	0	5	4.8	83	—	0	0	60	0.31	0	1	6
2017	8	—	6	2	8	3.8	100	—	25	13	50	0.28	0	0	8
2018	10	—	6	2	8	3.1	80	—	25	0	20	0.27	0	0	8
2019	10	—	3	3	6	4.0	60	—	50	20	20	0.48	0	0	6
2020	10	—	9	4	13	2.1	110	—	31	0	0	0.47	0	0	13

*Includes limited-entry, conservation and expo permits.

Total cougar mortality for unit 5 – East Canyon, Utah 1996–2022 (continued).

Year	Limited-entry permits*	Harvest-objective quota	Male harvest	Female harvest	Total harvest	Mean age	% permits filled	% quota filled	% females	% adult females	% ≥ 5 yrs old	Cougar treed / day	Wildlife Services harvest	Other mortality	Total harvest + mortality
2021	10	—	10	2	12	2.1	120	—	17	25	0	0.29	1	0	13
2022	13	—	4	3	7	1.7	54	—	43	43	0	0.14	0	0	7
Mean	9	9	3	3	6	2.7	66	107	39	11	14	0.27	0	0	7

*Includes limited-entry, conservation and expo permits.

Total cougar mortality for unit 5a – East Canyon, Davis, Utah 2002–2022.

Year	Limited-entry permits*	Harvest-objective quota	Male harvest	Female harvest	Total harvest	Mean age	% permits filled	% quota filled	% females	% adult females	% ≥ 5 yrs old	Cougar treed / day	Wildlife Services harvest	Other mortality	Total harvest + mortality
2002	2	—	2	0	2	1.5	100	—	0	—	0	—	0	0	2
2003	2	—	1	1	2	2.0	100	—	50	—	50	—	0	0	2
2004	2	—	1	1	2	2.0	100	—	50	—	0	—	0	0	2
2005	4	—	1	0	1	3.0	25	—	0	—	0	0.32	0	0	1
2006	—	4	1	3	4	2.0	—	100	75	—	0	0.05	0	1	5
2007	—	5	0	1	1	9.0	—	20	100	—	100	0.10	0	0	1
2008	—	5	0	0	0	—	—	0	—	—	—	0.03	0	0	0
2009	—	5	2	0	2	3.5	—	40	0	0	0	0.00	0	0	2
2010	—	5	2	2	4	3.8	—	80	50	50	25	0.25	0	0	4
2011	5	—	0	0	0	—	0	—	—	—	—	0.02	0	0	0
2012	5	—	1	0	1	3.0	—	—	0	0	0	—	0	0	1
2013	5	—	1	1	2	5.0	—	—	50	50	50	0.04	0	1	3
2014	5	—	0	2	2	3.0	—	—	100	50	50	—	0	1	3
2015	5	—	2	1	3	2.3	60	—	33	33	0	0.30	0	0	3
2016	5	—	0	0	0	—	0	—	—	—	—	0.07	0	0	0
2017	5	—	4	0	4	3.3	80	—	0	0	0	0.27	0	1	5
2018	5	—	2	3	5	3.6	100	—	60	40	50	0.20	0	0	5
2019	5	—	2	1	3	3.7	60	—	33	33	0	0.63	0	0	3
2020	5	—	5	1	6	2.8	120	—	17	0	0	0.26	0	3	9
2021	5	—	1	4	5	2.0	100	—	80	20	0	0.21	0	0	5
2022	5	—	1	2	3	1.8	60	—	67	33	0	0.27	0	3	6
Mean	4	5	1	1	2	3.2	63	48	43	23	18	0.19	0	0	3

*Includes limited-entry, conservation and expo permits.

Total cougar mortality for unit 21 – Fillmore, Utah 1990–2001.

Year	Limited-entry permits*	Harvest-objective quota	Male harvest	Female harvest	Total harvest	Mean age	% permits filled	% quota filled	% females	% adult females	% ≥ 6 yrs old	Cougar treed / day	Wildlife Services harvest	Other mortality	Total harvest + mortality
1990	30	—	7	2	9	—	30	—	22	—	—	—	3	0	12
1991	30	—	8	5	13	—	43	—	38	—	—	—	1	1	15
1992	30	—	9	4	13	—	43	—	31	—	—	—	0	1	14
1993	35	—	22	9	31	—	89	—	29	—	—	—	2	2	35
1994	39	—	17	7	24	—	62	—	29	—	—	—	1	0	25
1995	47	—	18	12	30	—	64	—	40	—	—	—	0	0	30
1996	47	—	14	10	24	3.2	51	—	42	—	14	—	0	1	25
1997	—	40	20	20	40	4.3	—	100	50	—	29	—	0	5	45
1998	—	40	21	20	41	3.2	—	103	49	—	19	0.27	0	1	42
1999	—	25	10	16	26	3.4	—	104	62	—	12	0.23	1	0	27
2000	—	25	17	10	27	3.6	—	108	37	—	24	0.15	0	0	27
2001	—	30	11	17	28	3.4	—	93	61	—	8	0.41	0	0	28
Mean	37	32	15	11	26	3.5	55	102	41	—	18	0.27	1	1	27

*Includes limited-entry, conservation and expo permits.

Total cougar mortality for unit 21a – Fillmore, Oak Creek, Utah 2002–2022.

Year	Limited-entry permits*	Harvest-objective quota	Male harvest	Female harvest	Total harvest	Mean age	% permits filled	% quota filled	% females	% adult females	% ≥ 5 yrs old	Cougar treed / day	Wildlife Services harvest	Other mortality	Total harvest + mortality
2002	—	7	1	4	5	2.4	—	71	80	—	0	0.36	0	0	5
2003	—	7	3	4	7	3.3	—	100	57	—	14	0.17	0	0	7
2004	—	10	4	1	5	3.2	—	50	20	—	0	0.19	0	1	6
2005	1	15	2	3	5	2.4	—	33	60	—	0	0.10	0	0	5
2006	10	—	2	2	4	4.0	40	—	50	—	50	0.19	0	0	4
2007	10	—	3	2	5	2.8	50	—	40	—	0	0.06	0	0	5
2008	10	—	2	2	4	2.5	40	—	50	25	0	0.03	0	0	4
2009	10	—	1	1	2	2.5	20	—	50	50	0	0.16	1	0	3
2010	—	8	3	3	6	2.6	—	75	50	50	0	0.05	0	0	6
2011	8	—	1	3	4	3.0	50	—	75	25	25	0.12	0	0	4
2012	8	—	1	3	4	3.8	—	—	75	50	25	0.05	0	0	4
2013	8	—	1	0	1	6.0	—	—	0	0	100	0.19	0	1	2
2014	12	—	2	0	2	3.5	—	—	0	0	0	0.34	0	0	2
2015	—	12	4	2	6	6.8	—	50	33	33	50	0.09	1	0	7
2016	—	12	1	3	4	3.3	—	33	75	50	25	0.54	0	0	4
2017	—	12	4	2	6	2.7	—	50	33	0	17	0.16	0	0	6
2018	—	12	1	3	4	3.0	—	33	75	50	50	0.21	0	0	4
2019	—	12	2	0	2	2.5	—	17	0	0	0	0.24	1	1	4
2020	—	12	2	0	2	2.5	—	17	0	0	0	0.11	0	1	3
2021	—	Unlimited	2	0	2	1.5	—	—	0	0	0	0.17	0	0	2
2022	—	Unlimited	1	2	3	2.0	—	—	67	33	0	0.00	0	1	4
Mean	9	11	2	2	4	3.2	35	48	42	24	17	0.17	0	0	4

*Includes limited-entry, conservation and expo permits.

Total cougar mortality for unit 21b – Fillmore, Pahvant, Utah 2002–2022.

Year	Limited-entry permits*	Harvest-objective quota	Male harvest	Female harvest	Total harvest	Mean age	% permits filled	% quota filled	% females	% adult females	% ≥ 5 yrs old	Cougar treed / day	Wildlife Services harvest	Other mortality	Total harvest + mortality
2002	—	20	9	8	17	2.6	—	85	47	—	7	0.20	0	2	19
2003	11	7	9	4	13	5.3	73	86	31	—	33	0.21	0	1	14
2004	11	7	8	6	14	3.8	64	100	43	—	40	0.50	0	1	15
2005	18	15	5	2	7	2.2	17	27	29	—	0	0.11	1	1	9
2006	15	—	8	2	10	2.3	67	—	20	—	0	0.10	0	1	11
2007	10	—	5	3	8	2.6	80	—	38	—	13	0.19	0	0	8
2008	10	—	7	4	11	3.2	100	—	36	27	18	0.26	0	0	11
2009	10	—	6	4	10	5.4	90	—	40	40	40	0.25	0	2	12
2010	10	—	7	3	10	3.7	70	—	30	20	22	0.62	1	0	11
2011	9	—	9	2	11	3.7	89	—	18	9	30	0.31	0	4	15
2012	9	—	16	4	20	2.7	—	—	20	20	0	0.23	0	1	21
2013	9	—	11	5	16	4.3	—	—	31	25	38	0.38	0	1	17
2014	9	—	4	4	8	3.4	—	—	50	38	20	0.39	0	1	9
2015	9	—	4	3	7	3.4	67	—	43	43	14	0.61	0	0	7
2016	10	—	6	1	7	3.8	60	—	14	0	20	1.31	0	0	7
2017	11	—	7	4	11	4.1	100	—	36	27	27	0.25	1	0	12
2018	14	—	13	2	15	3.5	107	—	13	7	21	0.20	0	0	15
2019	19	—	11	5	16	4.7	84	—	31	31	40	0.25	0	0	16
2020	19	—	9	6	16	2.9	84	—	38	31	13	0.19	0	2	18
2021	—	Unlimited	10	16	26	2.7	—	—	62	38	17	0.10	0	1	27
2022	—	Unlimited	7	8	15	2.9	—	—	53	40	7	0.08	0	1	16
Mean	12	12	8	5	13	3.5	89	74	34	26	20	0.32	0	1	14

*Includes limited-entry, conservation and expo permits.

Total cougar mortality for unit 15 – Henry Mtns, Utah 1990–2022.

Year	Limited-entry permits*	Harvest-objective quota	Male harvest	Female harvest	Total harvest	Mean age	% permits filled	% quota filled	% females	% adult females	% ≥ 5 yrs old	Cougar treed / day	Wildlife Services harvest	Other mortality	Total harvest + mortality
1990	4	—	0	0	0	—	0	—	—	—	—	—	0	1	1
1991	4	—	1	1	2	—	50	—	50	—	—	—	0	0	2
1992	4	—	1	0	1	—	25	—	0	—	—	—	0	0	1
1993	4	—	1	1	2	—	50	—	50	—	—	—	0	0	2
1994	4	—	0	0	0	—	0	—	—	—	—	—	0	0	0
1995	4	—	1	1	2	—	50	—	50	—	—	—	0	0	2
1996	4	—	2	1	3	4.0	75	—	33	—	—	—	0	0	3
1997	—	5	1	5	6	4.4	—	120	83	—	—	—	0	0	6
1998	—	5	1	2	3	3.0	—	60	67	—	—	0.40	0	0	3
1999	—	5	3	0	3	1.3	—	60	0	—	—	0.38	0	0	3
2000	—	5	3	2	5	3.5	—	100	40	—	40	0.73	0	0	5
2001	—	8	3	3	6	2.8	—	75	50	—	20	0.55	0	0	6
2002	—	8	6	1	7	2.3	—	88	14	—	0	0.12	0	0	7
2003	—	8	3	4	7	4.0	—	88	57	—	17	0.35	0	0	7
2004	—	8	2	3	5	3.6	—	63	60	—	20	—	0	0	5
2005	—	8	1	0	1	—	—	13	0	—	—	0.28	0	0	1
2006	—	8	2	1	3	3.0	—	38	33	—	0	0.21	0	0	3
2007	—	6	0	0	0	—	—	0	—	—	—	0.38	0	0	0
2008	—	4	1	1	2	2.0	—	50	50	50	0	0.00	0	0	2
2009	—	4	1	1	2	4.0	—	50	50	50	50	—	0	0	2
2010	—	4	0	0	0	—	—	0	—	—	—	—	0	0	0
2011	—	3	0	1	1	1.0	—	33	—	0	0	0.12	0	0	1
2012	—	—	2	3	5	4.0	—	—	60	20	50	0.21	0	0	5
2013	—	—	4	3	7	3.0	—	—	43	29	0	0.46	0	0	7

*Includes limited-entry, conservation and expo permits.

Total cougar mortality for unit 15 – Henry Mtns, Utah 1990–2022 (continued).

Year	Limited- entry permits*	Harvest- objective quota	Male harvest	Female harvest	Total harvest	Mean age	% permits filled	% quota filled	% females	% adult females	% ≥ 5 yrs old	Cougar treed / day	Wildlife Services harvest	Other mortality	Total harvest + mortality
2014	—	—	1	2	3	4.3	—	—	67	33	67	0.05	0	0	3
2015	—	12	5	4	9	2.3	—	75	44	33	0	0.89	0	0	9
2016	—	12	4	0	4	2.5	—	33	0	0	0	0.12	0	0	4
2017	—	12	1	3	4	3.3	—	33	75	25	25	0.00	0	0	4
2018	—	12	3	1	4	2.5	—	33	25	0	0	0.00	0	0	4
2019	—	12	4	2	6	4.0	—	50	33	33	17	0.00	0	0	6
2020	—	12	4	4	8	2.5	—	67	50	50	0	—	0	0	8
2021	—	Unlimited	2	2	4	3.8	—	—	50	25	25	0.46	0	0	4
2022	—	Unlimited	2	1	3	3.0	—	—	33	33	0	0.00	0	0	3
Mean	4	8	2	2	4	3.1	36	58	42	26	17	0.27	0	0	4

*Includes limited-entry, conservation and expo permits.

Total cougar mortality for unit 26 – Kaiparowits, Utah 1997–2022.

Year	Limited-entry permits*	Harvest-objective quota	Male harvest	Female harvest	Total harvest	Mean age	% permits filled	% quota filled	% females	% adult females	% ≥ 5 yrs old	Cougar treed / day	Wildlife Services harvest	Other mortality	Total harvest + mortality
1997	—	10	1	0	1	6.0	—	10	0	—	—	—	1	0	2
1998	—	10	2	0	2	4.0	—	20	0	—	—	0.06	1	0	3
1999	—	10	0	0	0	—	—	0	—	—	—	0.13	1	0	1
2000	—	10	1	0	1	1.5	—	10	0	—	0	0.17	1	0	2
2001	—	10	1	1	2	7.0	—	20	50	—	67	0.63	0	0	2
2002	—	10	0	1	1	1.0	—	10	100	—	0	0.04	1	0	2
2003	—	10	2	1	3	4.7	—	30	33	—	33	—	0	0	3
2004	—	10	1	0	1	1.0	—	10	0	—	0	—	2	0	3
2005	—	10	0	1	1	—	—	10	100	—	—	0.06	0	0	1
2006	—	10	1	1	2	3.5	—	20	50	—	50	0.21	0	0	2
2007	—	10	0	1	1	3.0	—	10	100	—	0	—	0	0	1
2008	—	7	0	1	1	2.0	—	14	100	0	0	0.16	0	0	1
2009	—	7	1	0	1	6.0	—	14	0	0	100	—	0	0	1
2010	—	7	4	1	5	2.0	—	71	20	0	0	—	1	0	6
2011	—	6	1	1	2	4.0	—	33	50	50	50	0.29	0	0	2
2012	—	—	1	1	2	2.0	—	—	50	50	0	0.24	0	0	2
2013	—	—	0	0	0	—	—	—	—	—	—	0.15	0	0	0
2014	—	—	3	0	3	4.0	—	—	0	0	50	0.12	0	1	4
2015	—	Unlimited	0	1	1	3.0	—	—	100	100	0	0.00	0	0	1
2016	—	Unlimited	2	0	2	—	—	—	0	0	—	0.04	0	0	2
2017	—	Unlimited	0	0	0	—	—	—	—	—	—	—	0	0	0
2018	—	Unlimited	1	0	1	4.0	—	—	0	0	0	—	0	0	1
2019	—	Unlimited	1	3	4	2.7	—	—	75	25	33	0.62	0	0	4
2020	—	Unlimited	1	0	1	4.0	—	—	0	0	0	—	1	0	2

*Includes limited-entry, conservation and expo permits.

Total cougar mortality for unit 26 – Kaiparowits, Utah 1997–2022 (continued).

Year	Limited- entry permits*	Harvest- objective quota	Male harvest	Female harvest	Total harvest	Mean age	% permits filled	% quota filled	% females	% adult females	% ≥ 5 yrs old	Cougar treed / day	Wildlife Services harvest	Other mortality	Total harvest + mortality
2021	—	Unlimited	1	0	1	4.0	—	—	0	0	0	—	0	0	1
2022	—	Unlimited	1	0	1	2.0	—	—	0	0	—	0.24	0	0	1
Mean	—	9	1	1	2	3.4	—	18	36	17	21	0.20	0	0	2

*Includes limited-entry, conservation and expo permits.

Total cougar mortality for unit 7 – Kamas, Utah 2020–2022.

Year	Limited-entry permits*	Harvest-objective quota	Male harvest	Female harvest	Total harvest	Mean age	% permits filled	% quota filled	% females	% adult females	% ≥ 5 yrs old	Cougar treed / day	Wildlife Services harvest	Other mortality	Total harvest + mortality
2020	6	—	2	2	4	4.0	50	—	50	25	33	0.61	4	0	8
2021	7	—	1	6	7	2.3	86	—	86	29	0	0.10	0	1	8
2022	5	—	1	2	3	3.0	60	—	67	33	0	—	0	0	3
Mean	6	—	1	3	5	3.1	65	—	67	29	11	0.36	1	1	5

*Includes limited-entry, conservation and expo permits.

Total cougar mortality for unit 13b – La Sal, Dolores Triangle, Utah 1994–2006.

Year	Limited-entry permits*	Harvest-objective quota	Male harvest	Female harvest	Total harvest	Mean age	% permits filled	% quota filled	% females	% adult females	% ≥ 6 yrs old	Cougar treed / day	Wildlife Services harvest	Other mortality	Total harvest + mortality
1994	5	—	1	0	1	—	20	—	0	—	—	—	0	0	1
1995	5	—	0	0	0	—	0	—	—	—	—	—	0	0	0
1996	5	—	2	0	2	4.0	40	—	0	—	—	—	0	0	2
1997	—	5	0	0	0	—	—	0	—	—	—	—	0	0	0
1998	—	5	0	0	0	—	—	0	—	—	—	0.34	0	0	0
1999	5	—	0	0	0	—	0	—	—	—	—	0.23	0	0	0
2000	—	5	0	0	0	—	—	0	—	—	—	0.36	0	0	0
2001	—	5	0	0	0	—	—	0	—	—	—	—	0	0	0
2002	—	5	0	0	0	—	—	0	—	—	—	—	0	0	0
2003	—	5	0	0	0	—	—	0	—	—	—	0.12	0	0	0
2004	—	10	0	0	0	—	—	0	—	—	—	0.00	1	0	1
2005	—	10	1	0	1	—	—	10	0	—	—	1.15	0	0	1
2006	—	5	0	0	0	—	—	0	—	—	—	—	0	1	1
Mean	5	6	0	0	0	4.0	15	1	0	—	—	0.37	0	0	0

*Includes limited-entry, conservation and expo permits.

Total cougar mortality for unit 13a – La Sal, La Sal Mtns, Utah 1990–2006.

Year	Limited- entry permits*	Harvest- objective quota	Male harvest	Female harvest	Total harvest	Mean age	% permits filled	% quota filled	% females	% adult females	% ≥ 6 yrs old	Cougar treed / day	Wildlife Services harvest	Other mortality	Total harvest + mortality
1990	8	—	0	0	0	—	0	—	—	—	—	—	0	0	0
1991	8	—	2	0	2	—	25	—	0	—	—	—	1	0	3
1992	8	—	1	1	2	—	25	—	50	—	—	—	1	0	3
1993	8	—	3	1	4	—	50	—	25	—	—	—	0	3	7
1994	9	—	3	1	4	—	44	—	25	—	—	—	0	0	4
1995	12	—	2	0	2	—	17	—	0	—	—	—	0	0	2
1996	12	—	3	2	5	2.9	42	—	40	—	0	—	1	0	6
1997	—	10	1	0	1	2.5	—	10	0	—	0	—	0	2	3
1998	—	10	3	0	3	2.3	—	30	0	—	0	0.34	0	0	3
1999	—	10	1	2	3	2.0	—	30	67	—	0	0.23	0	0	3
2000	—	10	4	3	7	2.9	—	70	43	—	0	0.36	0	0	7
2001	—	7	2	0	2	2.5	—	29	0	—	0	0.67	0	1	3
2002	—	7	5	0	5	2.4	—	71	0	—	0	0.14	4	0	9
2003	—	7	3	3	6	4.3	—	86	50	—	33	0.36	0	0	6
2004	—	15	3	0	3	2.5	—	20	0	—	0	0.10	4	0	7
2005	—	15	0	0	0	—	—	0	—	—	—	0.16	2	0	2
2006	—	10	1	0	1	7.0	—	10	0	—	100	0.24	0	1	2
Mean	9	10	2	1	3	3.1	29	36	20	—	13	0.29	1	0	4

*Includes limited-entry, conservation and expo permits.

Total cougar mortality for unit 13 – La Sal, Utah 2007–2022.

Year	Limited-entry permits*	Harvest-objective quota	Male harvest	Female harvest	Total harvest	Mean age	% permits filled	% quota filled	% females	% adult females	% ≥ 5 yrs old	Cougar treed / day	Wildlife Services harvest	Other mortality	Total harvest + mortality
2007	—	10	4	2	6	2.7	—	60	33	—	17	0.28	0	1	7
2008	—	10	0	1	1	1.0	—	10	100	0	0	0.31	0	1	2
2009	—	7	2	2	4	5.0	—	57	50	50	67	0.42	0	1	5
2010	—	7	5	1	6	3.7	—	86	17	17	17	0.14	0	0	6
2011	—	5	3	2	5	4.0	—	100	40	40	0	0.40	0	0	5
2012	—	—	7	2	9	2.5	—	—	22	11	0	0.24	0	0	9
2013	—	—	2	5	7	4.6	—	—	71	43	57	0.28	0	0	7
2014	—	—	8	5	13	4.0	—	—	38	23	33	0.50	0	0	13
2015	—	15	3	3	6	3.2	—	40	50	50	40	0.32	0	0	6
2016	—	15	5	2	7	3.6	—	47	29	14	29	0.23	0	0	7
2017	—	15	2	2	4	2.0	—	27	50	0	0	0.14	0	0	4
2018	—	15	5	1	6	2.6	—	40	17	17	0	0.22	1	0	7
2019	—	15	5	5	10	3.5	—	67	50	50	10	0.13	0	0	10
2020	—	15	3	1	4	2.3	—	27	25	0	0	0.26	0	0	4
2021	—	Unlimited	4	1	5	3.0	—	—	20	20	20	0.27	0	0	5
2022	—	Unlimited	1	4	5	2.2	—	—	80	60	20	0.12	0	0	5
Mean	—	11	4	2	6	3.1	—	66	43	25	19	0.28	0	0	6

*Includes limited-entry, conservation and expo permits.
Both subunits were recombined in 2007.

Total cougar mortality for unit 23 – Monroe, Utah 1990–2022.

Year	Limited- entry permits*	Harvest- objective quota	Male harvest	Female harvest	Total harvest	Mean age	% permits filled	% quota filled	% females	% adult females	% ≥ 5 yrs old	Cougar treed / day	Wildlife Services harvest	Other mortality	Total harvest + mortality
1990	27	—	7	4	11	—	41	—	36	—	—	—	0	0	11
1991	27	—	11	6	17	—	63	—	35	—	—	—	0	0	17
1992	27	—	8	7	15	—	56	—	47	—	—	—	0	0	15
1993	34	—	10	8	18	—	53	—	44	—	—	—	2	0	20
1994	37	—	18	6	24	—	65	—	25	—	—	—	5	2	31
1995	34	—	11	5	16	—	47	—	31	—	—	—	0	0	16
1996	24	—	8	6	14	3.2	58	—	43	—	—	—	2	1	17
1997	40	—	9	8	17	3.8	43	—	47	—	—	—	2	1	20
1998	30	—	11	4	15	2.6	50	—	27	—	—	0.31	5	0	20
1999	25	—	5	2	7	2.7	28	—	29	—	—	0.42	0	0	7
2000	15	—	5	4	9	2.6	60	—	44	—	17	0.21	0	0	9
2001	15	—	4	2	6	4.4	40	—	33	—	40	0.16	0	0	6
2002	5	—	2	1	3	2.3	60	—	33	—	0	0.21	0	0	3
2003	5	—	4	0	4	2.7	80	—	0	—	0	0.30	0	0	4
2004	5	—	2	3	5	3.5	100	—	60	—	25	0.22	2	2	9
2005	6	—	6	0	6	2.0	100	—	0	—	0	0.22	0	1	7
2006	4	—	3	1	4	3.0	100	—	25	—	0	0.26	1	4	9
2007	5	—	3	0	3	4.3	60	—	0	—	33	0.38	1	9	13
2008	6	—	3	1	4	2.5	67	—	25	0	0	0.44	0	2	6
2009	9	—	7	0	7	3.5	67	—	0	0	17	0.55	2	3	12
2010	10	—	3	3	6	2.6	60	—	50	17	20	0.39	0	1	7
2011	12	—	1	7	8	3.8	67	—	88	75	25	0.31	0	2	10
2012	12	—	4	6	10	2.6	—	—	60	30	10	0.22	0	2	12
2013	12	—	3	1	4	4.3	—	—	25	25	25	0.17	0	1	5

*Includes limited-entry, conservation and expo permits.

Total cougar mortality for unit 23 – Monroe, Utah 1990–2022 (continued).

Year	Limited- entry permits*	Harvest- objective quota	Male harvest	Female harvest	Total harvest	Mean age	% permits filled	% quota filled	% females	% adult females	% ≥ 5 yrs old	Cougar treed / day	Wildlife Services harvest	Other mortality	Total harvest + mortality
2014	8	—	6	2	8	2.5	—	—	25	13	0	—	0	0	8
2015	8	—	5	1	6	2.0	63	—	17	0	0	0.23	0	0	6
2016	9	—	7	2	9	3.4	56	—	22	11	38	0.06	0	0	9
2017	9	—	4	5	9	4.6	100	—	56	44	33	0.23	0	0	9
2018	9	—	8	1	9	2.7	100	—	11	0	0	0.36	0	0	9
2019	15	—	12	2	14	4.0	87	—	14	14	31	0.24	2	1	17
2020	23	—	10	3	13	3.0	52	—	23	15	11	0.17	1	1	15
2021	22	—	7	4	11	2.7	50	—	36	27	22	0.13	0	3	14
2022	22	—	3	2	5	3.0	23	—	40	40	20	0.19	0	0	5
Mean	17	—	6	3	10	3.1	64	—	32	21	16	0.27	1	1	11

*Includes limited-entry, conservation and expo permits.

Total cougar mortality for unit 4 – Morgan-South Rich, Utah 1990–2022.

Year	Limited-entry permits*	Harvest-objective quota	Male harvest	Female harvest	Total harvest	Mean age	% permits filled	% quota filled	% females	% adult females	% ≥ 5 yrs old	Cougar treed / day	Wildlife Services harvest	Other mortality	Total harvest + mortality
1990	13	—	0	0	0	—	0	—	—	—	—	—	0	0	0
1991	13	—	0	0	0	—	0	—	—	—	—	—	0	0	0
1992	13	—	0	0	0	—	0	—	—	—	—	—	0	0	0
1993	13	—	0	0	0	—	0	—	—	—	—	—	0	0	0
1994	14	—	0	0	0	—	0	—	—	—	—	—	0	0	0
1995	14	—	0	0	0	—	0	—	—	—	—	—	0	0	0
1996	7	—	3	2	5	2.5	71	—	40	—	—	—	3	1	9
1997	7	—	2	2	4	4.5	57	—	50	—	—	—	0	0	4
1998	7	—	1	2	3	2.5	43	—	67	—	—	0.42	1	1	5
1999	8	—	3	3	6	3.6	75	—	50	—	—	0.61	0	0	6
2000	12	—	6	4	10	1.6	83	—	40	—	0	0.44	0	0	10
2001	—	10	8	8	16	3.3	—	160	50	—	25	0.63	0	0	16
2002	—	12	4	5	9	2.9	—	75	56	—	13	0.30	0	2	11
2003	16	—	7	5	12	2.5	75	—	42	—	11	0.48	0	0	12
2004	16	—	7	4	11	3.0	69	—	36	—	11	0.26	2	1	14
2005	16	—	4	6	10	2.3	63	—	60	—	11	0.28	1	0	11
2006	11	—	5	6	11	3.3	100	—	55	—	30	0.27	0	0	11
2007	8	—	3	1	4	2.5	50	—	25	—	25	0.23	1	0	5
2008	8	—	2	1	3	2.0	38	—	33	0	0	0.28	0	0	3
2009	5	—	2	1	3	1.7	60	—	33	0	0	0.35	1	1	5
2010	6	—	3	1	4	2.8	67	—	25	0	0	0.20	0	0	4
2011	6	—	5	1	6	3.3	100	—	17	17	17	0.13	1	0	7
2012	6	—	3	2	5	2.8	67	—	40	20	20	0.16	2	0	7
2013	6	—	5	0	5	4.2	50	—	0	0	20	0.26	1	0	6

*Includes limited-entry, conservation and expo permits.

Total cougar mortality for unit 4 – Morgan-South Rich, Utah 1990–2022 (continued).

Year	Limited- entry permits*	Harvest- objective quota	Male harvest	Female harvest	Total harvest	Mean age	% permits filled	% quota filled	% females	% adult females	% ≥ 5 yrs old	Cougar treed / day	Wildlife Services harvest	Other mortality	Total harvest + mortality
2014	6	—	2	3	5	5.3	83	—	60	40	67	0.39	1	0	6
2015	6	—	2	4	6	5.0	100	—	67	67	33	0.36	1	1	8
2016	8	—	7	3	10	3.7	88	—	30	20	30	0.53	2	0	12
2017	6	—	5	0	5	3.3	83	—	0	0	25	0.41	2	1	8
2018	10	—	7	1	8	3.1	80	—	13	13	7	0.33	5	5	18
2019	15	—	10	5	15	2.9	100	—	33	27	15	0.38	4	0	19
2020	23	—	10	13	23	2.8	100	—	57	39	13	0.33	4	0	27
2021	22	—	12	13	25	3.0	109	—	52	28	17	0.21	2	1	28
2022	20	—	10	12	22	2.3	110	—	55	32	15	0.09	1	5	28
Mean	11	11	4	3	7	3.1	62	118	40	19	18	0.33	1	1	9

*Includes limited-entry, conservation and expo permits.

Total cougar mortality for unit 24 – Mt Dutton, Utah 1996–2022.

Year	Limited-entry permits*	Harvest-objective quota	Male harvest	Female harvest	Total harvest	Mean age	% permits filled	% quota filled	% females	% adult females	% ≥ 5 yrs old	Cougar treed / day	Wildlife Services harvest	Other mortality	Total harvest + mortality
1996	15	—	5	3	8	3.0	53	—	38	—	—	—	0	1	9
1997	20	—	8	3	11	4.3	55	—	27	—	—	—	1	0	12
1998	20	—	2	6	8	4.8	40	—	75	—	—	0.45	0	0	8
1999	15	—	2	3	5	3.4	33	—	60	—	0	0.11	0	0	5
2000	15	—	1	5	6	3.2	40	—	83	—	40	0.13	0	0	6
2001	10	—	3	0	3	4.3	30	—	0	—	33	0.60	0	0	3
2002	5	—	1	2	3	4.0	60	—	67	—	50	0.18	0	0	3
2003	5	—	3	1	4	5.0	80	—	25	—	67	0.57	0	0	4
2004	10	—	1	1	2	4.0	20	—	50	—	0	0.12	2	1	5
2005	—	10	5	5	10	3.7	—	100	50	—	30	0.16	2	1	13
2006	10	—	5	5	10	3.4	100	—	50	—	11	0.23	1	0	11
2007	10	—	5	2	7	2.9	70	—	29	—	14	0.24	3	0	10
2008	11	—	5	6	11	2.4	100	—	55	9	0	0.49	0	0	11
2009	11	—	6	4	10	3.3	91	—	40	30	30	0.19	0	0	10
2010	10	—	3	5	8	4.6	80	—	63	50	38	0.83	0	0	8
2011	16	—	6	2	8	3.6	50	—	25	25	0	0.22	0	0	8
2012	16	—	3	0	3	2.3	—	—	0	0	0	0.08	0	0	3
2013	16	—	2	1	3	4.3	—	—	33	33	67	0.14	1	0	4
2014	12	—	1	4	5	2.0	—	—	80	20	0	0.13	0	0	5
2015	14	—	3	4	7	2.8	50	—	57	29	33	0.23	0	0	7
2016	14	—	4	2	6	5.8	43	—	33	33	80	0.10	0	2	8
2017	14	—	6	2	8	2.9	57	—	25	0	25	0.15	0	0	8
2018	15	—	6	3	9	3.3	60	—	33	22	11	0.47	0	0	9
2019	15	—	6	6	12	3.7	80	—	50	50	9	0.29	2	0	14
2020	15	—	3	3	6	1.8	40	—	50	33	0	0.00	0	1	7

*Includes limited-entry, conservation and expo permits.

Total cougar mortality for unit 24 – Mt Dutton, Utah 1996–2022 (continued).

Year	Limited- entry permits*	Harvest- objective quota	Male harvest	Female harvest	Total harvest	Mean age	% permits filled	% quota filled	% females	% adult females	% ≥ 5 yrs old	Cougar treed / day	Wildlife Services harvest	Other mortality	Total harvest + mortality
2021	14	—	6	1	7	2.7	43	—	14	14	0	0.10	1	8	16
2022	—	14	8	4	12	2.1	—	86	33	17	0	0.57	2	0	14
Mean	13	12	4	3	7	3.5	54	93	42	24	22	0.27	1	1	8

*Includes limited-entry, conservation and expo permits.

Total cougar mortality for unit 11 – Nine Mile, Utah 2008–2022.

Year	Limited- entry permits*	Harvest- objective quota	Male harvest	Female harvest	Total harvest	Mean age	% permits filled	% quota filled	% females	% adult females	% ≥ 5 yrs old	Cougar treed / day	Wildlife Services harvest	Other mortality	Total harvest + mortality
2008	—	12	4	4	8	2.0	—	67	50	13	14	0.06	1	0	9
2009	—	12	7	6	13	3.5	—	108	46	38	23	0.11	1	0	14
2010	—	12	9	3	12	3.1	—	100	25	17	8	0.16	0	0	12
2011	—	12	5	1	6	3.5	—	50	17	17	17	0.37	0	0	6
2012	—	—	7	4	11	3.3	—	—	36	27	18	0.50	0	0	11
2013	—	—	9	3	12	3.9	—	—	25	17	50	0.11	0	0	12
2014	—	—	7	4	11	3.9	—	—	36	27	14	0.17	0	1	12
2015	—	20	10	10	20	3.3	—	100	50	40	17	0.28	0	0	20
2016	—	20	12	6	18	4.0	—	90	33	22	35	0.12	0	0	18
2017	—	22	16	6	22	3.1	—	100	27	18	14	0.16	0	0	22
2018	—	25	12	12	24	3.0	—	96	50	21	0	0.23	0	5	29
2019	—	25	14	11	25	2.9	—	100	44	28	10	0.53	0	0	25
2020	—	38	15	8	23	2.8	—	61	35	22	5	0.12	0	0	23
2021	—	Unlimited	7	6	13	3.4	—	—	46	23	22	0.15	0	0	13
2022	—	Unlimited	9	7	16	2.1	—	—	44	19	0	0.02	0	0	16
Mean	—	19	10	6	16	3.3	—	85	38	22	17	0.21	0	0	16

*Includes limited-entry, conservation and expo permits.
All subunits were recombined in 2008.

Total cougar mortality for unit 11a – Nine Mile, Anthro, Utah 1990–2007.

Year	Limited- entry permits*	Harvest- objective quota	Male harvest	Female harvest	Total harvest	Mean age	% permits filled	% quota filled	% females	% adult females	% ≥ 6 yrs old	Cougar treed / day	Wildlife Services harvest	Other mortality	Total harvest + mortality
1990	12	—	4	0	4	—	33	—	0	—	—	—	2	0	6
1991	12	—	5	3	8	—	67	—	38	—	—	—	0	0	8
1992	12	—	2	2	4	—	33	—	50	—	—	—	0	1	5
1993	12	—	3	3	6	—	50	—	50	—	—	—	0	2	8
1994	13	—	4	1	5	—	38	—	20	—	—	—	1	0	6
1995	13	—	5	4	9	—	69	—	44	—	—	—	1	2	12
1996	13	—	3	1	4	5.0	31	—	25	—	44	—	0	0	4
1997	13	—	2	3	5	3.8	38	—	60	—	20	—	0	0	5
1998	5	—	1	1	2	3.0	40	—	50	—	13	0.41	0	0	2
1999	5	—	1	0	1	2.9	20	—	0	—	0	0.25	0	0	1
2000	5	—	2	2	4	3.4	80	—	50	—	13	0.24	0	0	4
2001	—	6	2	1	3	3.7	—	50	33	—	0	0.43	0	1	4
2002	—	5	3	2	5	3.8	—	100	40	—	25	0.16	0	0	5
2003	—	5	1	1	2	5.0	—	40	50	—	0	0.02	0	1	3
2004	—	5	2	0	2	4.5	—	40	0	—	50	0.10	0	0	2
2005	—	5	1	0	1	—	—	20	0	—	—	0.03	0	0	1
2006	5	—	0	0	0	—	0	—	—	—	—	0.06	0	0	0
2007	3	—	0	2	2	3.0	67	—	100	—	0	0.33	0	0	2
Mean	9	5	2	1	4	3.8	44	50	36	—	17	0.20	0	0	4

*Includes limited-entry, conservation and expo permits.

Total cougar mortality for unit 11bc – Nine Mile, Range Creek, Utah 1990–2007.

Year	Limited- entry permits*	Harvest- objective quota	Male harvest	Female harvest	Total harvest	Mean age	% permits filled	% quota filled	% females	% adult females	% ≥ 6 yrs old	Cougar treed / day	Wildlife Services harvest	Other mortality	Total harvest + mortality
1990	16	—	5	3	8	—	50	—	38	—	—	—	0	0	8
1991	16	—	5	1	6	—	38	—	17	—	—	—	0	0	6
1992	16	—	6	1	7	—	44	—	14	—	—	—	0	1	8
1993	16	—	6	0	6	—	38	—	0	—	—	—	1	0	7
1994	16	—	5	4	9	—	56	—	44	—	—	—	0	0	9
1995	16	—	8	4	12	—	75	—	33	—	—	—	0	0	12
1996	16	—	6	1	7	3.6	44	—	14	—	44	—	0	0	7
1997	—	20	9	12	21	3.2	—	105	57	—	20	—	2	1	24
1998	—	16	7	7	14	3.5	—	88	50	—	13	0.41	1	0	15
1999	—	16	11	4	15	2.9	—	94	27	—	0	0.25	0	0	15
2000	—	16	7	9	16	3.4	—	100	56	—	13	0.24	0	0	16
2001	—	16	10	7	17	2.2	—	106	41	—	0	0.33	0	1	18
2002	—	16	11	5	16	2.6	—	100	31	—	6	0.06	1	0	17
2003	—	12	9	6	15	2.4	—	125	40	—	0	0.11	0	0	15
2004	—	25	4	8	12	5.3	—	48	67	—	42	0.06	1	2	15
2005	—	30	4	3	7	2.4	—	23	43	—	0	0.14	0	0	7
2006	—	20	5	4	9	3.1	—	45	44	—	25	0.07	0	1	10
2007	—	15	4	2	6	3.4	—	40	33	—	20	0.09	0	0	6
Mean	16	18	7	5	11	3.2	49	79	36	—	15	0.18	0	0	12

*Includes limited-entry, conservation and expo permits.

2003, 2004, and 2006 unit was called 11b, Nine Mile, Range Creek North.

Total cougar mortality for unit 11c – Nine Mile, Range Creek South, Utah 2003–2004.

Year	Limited-entry permits*	Harvest-objective quota	Male harvest	Female harvest	Total harvest	Mean age	% permits filled	% quota filled	% females	% adult females	% ≥ 6 yrs old	Cougar treed / day	Wildlife Services harvest	Other mortality	Total harvest + mortality
2003	—	8	2	2	4	4.0	—	50	50	—	0	0.17	1	0	5
2004	—	10	2	3	5	—	—	50	60	—	—	—	0	0	5
Mean	—	9	2	3	5	4.0	—	50	55	—	0	0.17	1	0	5

*Includes limited-entry, conservation and expo permits.
Unit was recombined with unit 11b in 2005.

Total cougar mortality for unit 8 – North Slope, Utah 1996–2002.

Year	Limited-entry permits*	Harvest-objective quota	Male harvest	Female harvest	Total harvest	Mean age	% permits filled	% quota filled	% females	% adult females	% ≥ 6 yrs old	Cougar treed / day	Wildlife Services harvest	Other mortality	Total harvest + mortality
1996	12	—	2	2	4	6.5	33	—	50	—	75	—	0	1	5
1997	3	12	9	3	12	3.8	—	—	25	—	23	—	0	1	13
1998	2	12	4	4	8	4.9	—	—	50	—	25	0.39	0	0	8
1999	2	12	5	1	6	3.8	—	—	17	—	17	0.31	0	0	6
2000	—	12	6	5	11	3.8	—	92	45	—	17	0.57	0	0	11
2001	—	14	8	6	14	3.2	—	100	43	—	8	0.32	0	0	14
2002	—	14	9	6	15	3.6	—	107	40	—	7	0.35	0	0	15
Mean	5	13	6	4	10	4.2	33	100	39	—	25	0.39	0	0	10

*Includes limited-entry, conservation and expo permits.

Total cougar mortality for unit 8ab – North Slope, Summit/West Daggett, Utah 2003–2022.

Year	Limited-entry permits*	Harvest-objective quota	Male harvest	Female harvest	Total harvest	Mean age	% permits filled	% quota filled	% females	% adult females	% ≥ 5 yrs old	Cougar treed / day	Wildlife Services harvest	Other mortality	Total harvest + mortality
2003	—	10	4	3	7	4.0	—	70	43	—	33	0.18	0	0	7
2004	—	10	3	4	7	3.0	—	70	57	—	20	0.29	1	0	8
2005	—	10	1	2	3	2.0	—	30	67	—	0	0.07	0	0	3
2006	—	10	1	2	3	3.0	—	30	67	—	33	0.30	0	0	3
2007	—	7	1	0	1	3.0	—	14	0	—	0	0.18	0	0	1
2008	—	5	1	1	2	2.0	—	40	50	0	0	0.29	0	0	2
2009	—	10	5	4	9	2.1	—	90	44	11	0	0.00	0	0	9
2010	10	—	3	0	3	2.3	30	—	0	0	0	0.29	0	0	3
2011	—	10	2	3	5	3.0	—	50	60	20	0	0.00	0	0	5
2012	—	—	2	0	2	3.0	—	—	0	0	0	0.32	0	0	2
2013	—	—	3	3	6	2.6	—	—	50	17	20	—	0	0	6
2014	—	—	1	1	2	3.0	—	—	50	0	0	0.32	1	0	3
2015	—	10	2	3	5	4.8	—	50	60	60	60	0.38	0	0	5
2016	—	10	5	1	6	6.3	—	60	17	17	100	0.06	0	0	6
2017	—	10	2	2	4	3.8	—	40	50	0	50	0.02	0	1	5
2018	—	10	5	2	7	3.0	—	70	29	0	13	0.15	0	0	8
2019	—	10	5	4	9	2.6	—	90	44	11	0	0.28	2	0	11
2020	—	10	4	0	4	2.8	—	40	0	0	0	0.13	0	0	4
2021	—	Unlimited	7	5	12	3.5	—	—	42	33	18	0.27	2	0	14
2022	—	Unlimited	5	3	8	2.4	—	—	38	13	14	0.13	0	0	8
Mean	10	10	3	2	5	3.1	30	50	38	11	18	0.19	0	0	6

*Includes limited-entry, conservation and expo permits.

Total cougar mortality for unit 8c – North Slope, Three Corners, Utah 2003–2022.

Year	Limited-entry permits*	Harvest-objective quota	Male harvest	Female harvest	Total harvest	Mean age	% permits filled	% quota filled	% females	% adult females	% ≥ 5 yrs old	Cougar treed / day	Wildlife Services harvest	Other mortality	Total harvest + mortality
2003	—	10	1	2	3	3.5	—	30	67	—	33	—	1	0	4
2004	—	10	1	1	2	4.5	—	20	50	—	50	0.20	0	0	2
2005	—	10	1	1	2	2.0	—	20	50	—	0	0.03	1	0	3
2006	—	10	1	1	2	2.5	—	20	50	—	0	0.00	0	0	2
2007	—	7	4	0	4	3.3	—	57	0	—	33	0.37	0	0	4
2008	—	5	2	2	4	2.8	—	80	50	25	0	0.41	0	0	4
2009	—	10	1	0	1	3.0	—	10	0	0	0	0.72	0	0	1
2010	7	—	1	0	1	2.0	14	—	0	0	0	0.23	0	0	1
2011	—	10	3	3	6	3.8	—	60	50	50	17	0.17	0	0	6
2012	—	—	2	0	2	2.0	—	—	0	0	0	0.34	0	0	2
2013	—	—	4	1	5	3.6	—	—	20	20	20	0.10	0	0	5
2014	—	—	2	2	4	4.5	—	—	50	50	25	0.12	1	0	5
2015	—	10	2	1	3	3.0	—	30	33	33	50	0.00	0	0	3
2016	—	10	3	0	3	2.7	—	30	0	0	0	0.10	0	0	3
2017	—	10	1	2	3	2.3	—	30	67	0	0	0.19	0	0	3
2018	—	10	1	1	2	3.0	—	20	50	0	0	0.05	0	0	2
2019	—	10	2	1	3	4.3	—	30	33	33	33	0.12	0	0	3
2020	—	10	3	0	3	2.0	—	30	0	0	0	0.22	0	1	4
2021	—	Unlimited	1	1	2	5.0	—	—	50	50	100	0.15	1	0	3
2022	—	Unlimited	1	2	3	1.5	—	—	67	33	0	0.00	0	0	3
Mean	7	10	2	1	3	3.1	14	34	34	25	18	0.19	0	0	3

*Inclu/des limited-entry, conservation and expo permits.

Total cougar mortality for unit 3 – Ogden, Utah 1996–2022.

Year	Limited-entry permits*	Harvest-objective quota	Male harvest	Female harvest	Total harvest	Mean age	% permits filled	% quota filled	% females	% adult females	% ≥ 5 yrs old	Cougar treed / day	Wildlife Services harvest	Other mortality	Total harvest + mortality
1996	12	—	3	5	8	4.0	67	—	63	—	—	—	3	1	12
1997	18	—	6	4	10	2.9	56	—	40	—	—	—	0	0	10
1998	12	—	3	5	8	4.1	67	—	63	—	—	0.35	0	0	8
1999	10	—	3	3	6	3.0	60	—	50	—	—	0.18	0	0	6
2000	10	—	3	4	7	2.3	70	—	57	—	17	0.29	0	0	7
2001	—	7	6	2	8	2.5	—	114	25	—	13	0.56	1	2	11
2002	—	7	2	3	5	4.3	—	71	60	—	50	0.18	0	0	5
2003	12	—	5	3	8	4.0	67	—	38	—	0	—	0	0	8
2004	—	19	6	13	19	2.3	—	100	68	—	8	0.23	0	3	22
2005	—	19	1	6	7	2.6	—	37	86	—	14	0.07	0	0	7
2006	19	—	4	2	6	1.6	32	—	33	—	0	0.17	0	0	6
2007	14	—	5	4	9	2.8	64	—	44	—	13	0.28	0	0	9
2008	14	—	2	3	5	2.2	36	—	60	20	0	0.08	0	2	7
2009	14	—	4	3	7	3.4	50	—	43	29	14	0.14	0	0	7
2010	11	—	6	1	7	2.4	55	—	14	0	0	0.14	0	0	7
2011	15	—	3	3	6	3.0	40	—	50	17	0	0.22	0	1	7
2012	15	—	5	4	9	3.0	—	—	44	11	11	0.06	0	0	9
2013	15	—	2	2	4	4.8	—	—	50	50	75	0.06	0	0	4
2014	15	—	6	4	10	2.9	—	—	40	20	30	0.09	0	2	12
2015	15	—	6	5	11	3.9	73	—	45	36	36	0.11	0	1	12
2016	—	14	10	7	17	2.8	—	121	41	24	13	0.20	0	1	18
2017	—	13	8	5	13	3.1	—	100	38	15	8	0.12	0	0	13
2018	—	13	5	9	14	3.3	—	108	64	36	18	0.22	0	3	17
2019	12	—	8	6	14	3.6	86	—	43	21	27	0.28	0	8	22
2020	—	24	14	9	23	2.8	—	92	39	30	19	0.36	0	2	25

*Includes limited-entry, conservation and expo permits.

Total cougar mortality for unit 3 – Ogden, Utah 1996–2022 (continued).

Year	Limited- entry permits*	Harvest- objective quota	Male harvest	Female harvest	Total harvest	Mean age	% permits filled	% quota filled	% females	% adult females	% ≥ 5 yrs old	Cougar treed / day	Wildlife Services harvest	Other mortality	Total harvest + mortality
2021	—	Unlimited	16	7	23	2.3	—	—	30	22	11	0.40	0	7	30
2022	—	Unlimited	7	6	13	1.7	—	—	46	23	0	0.06	0	4	17
Mean	14	15	6	5	10	3.0	57	93	47	23	16	0.20	0	1	12

*Includes limited-entry, conservation and expo permits.

Total cougar mortality for unit 18 – Oquirrh-Stansbury, Utah 1990–2018.

Year	Limited-entry permits*	Harvest-objective quota	Male harvest	Female harvest	Total harvest	Mean age	% permits filled	% quota filled	% females	% adult females	% ≥ 5 yrs old	Cougar treed / day	Wildlife Services harvest	Other mortality	Total harvest + mortality
1990	11	—	2	2	4	—	36	—	50	—	—	—	2	0	6
1991	11	—	7	2	9	—	82	—	22	—	—	—	1	0	10
1992	11	—	3	1	4	—	36	—	25	—	—	—	1	1	6
1993	15	—	6	2	8	—	53	—	25	—	—	—	0	1	9
1994	17	—	5	5	10	—	59	—	50	—	—	—	3	0	13
1995	26	—	6	9	15	—	58	—	60	—	—	—	0	0	15
1996	26	—	9	9	18	3.9	69	—	50	—	—	—	2	2	22
1997	20	—	6	5	11	4.9	55	—	45	—	—	—	2	2	15
1998	20	—	9	8	17	2.8	85	—	47	—	—	0.30	0	1	18
1999	13	—	7	3	10	4.0	77	—	30	—	0	0.20	0	0	10
2000	13	—	4	4	8	3.0	62	—	50	—	14	0.26	0	0	8
2001	13	—	6	3	9	4.6	69	—	33	—	13	0.17	0	0	9
2002	16	—	6	5	11	3.3	69	—	45	—	50	0.16	0	1	12
2003	12	—	6	2	8	4.0	67	—	25	—	33	0.45	0	3	11
2004	11	—	1	3	4	2.5	36	—	75	—	0	0.32	0	0	4
2005	7	—	1	4	5	4.4	71	—	80	—	60	0.18	1	3	9
2006	7	—	4	2	6	3.4	86	—	33	—	40	0.31	1	0	7
2007	6	—	2	0	2	3.0	33	—	0	—	0	0.28	0	0	2
2008	6	—	3	1	4	2.8	67	—	25	25	0	0.30	1	0	5
2009	6	—	1	1	2	3.5	33	—	50	50	0	0.18	1	0	3
2010	3	—	1	1	2	5.0	33	—	50	50	50	0.18	0	0	2
2011	4	—	1	1	2	2.5	50	—	50	50	0	0.22	0	0	2
2012	4	—	2	0	2	3.0	50	—	0	0	0	0.12	0	0	2
2013	4	—	6	0	6	3.8	100	—	0	0	50	0.19	0	1	7

*Includes limited-entry, conservation and expo permits.

Total cougar mortality for unit 18 – Oquirrh-Stansbury, Utah 1990–2018 (continued).

Year	Limited- entry permits*	Harvest- objective quota	Male harvest	Female harvest	Total harvest	Mean age	% permits filled	% quota filled	% females	% adult females	% ≥ 5 yrs old	Cougar treed / day	Wildlife Services harvest	Other mortality	Total harvest + mortality
2014	6	—	4	2	6	6.0	100	—	33	33	75	0.22	0	0	6
2015	6	—	5	1	6	4.0	83	—	17	17	33	0.27	0	1	7
2016	9	—	6	2	8	5.8	67	—	25	13	75	0.19	1	0	9
2017	11	—	4	1	5	3.4	45	—	20	20	0	0.24	0	1	6
2018	12	—	6	1	7	3.4	58	—	14	0	14	0.15	0	0	7
Mean	11	—	4	3	7	3.8	62	—	36	22	25	0.23	1	1	8

*Includes limited-entry, conservation and expo permits.

Total cougar mortality for unit 18a – Oquirrh-Stansbury, East, Utah 2019–2022.

Year	Limited-entry permits*	Harvest-objective quota	Male harvest	Female harvest	Total harvest	Mean age	% permits filled	% quota filled	% females	% adult females	% ≥ 5 yrs old	Cougar treed / day	Wildlife Services harvest	Other mortality	Total harvest + mortality
2019	8	—	4	2	6	5.0	75	—	33	17	40	0.25	0	0	6
2020	9	—	4	4	8	3.4	89	—	50	38	14	0.27	0	0	8
2021	12	—	5	3	8	3.4	67	—	38	25	14	0.21	0	0	8
2022	11	—	0	5	5	3.5	45	—	100	60	0	0.08	0	0	5
Mean	10	—	3	4	7	3.8	69	—	55	35	17	0.20	0	0	7

*Includes limited-entry, conservation and expo permits.

Total cougar mortality for unit 18b – Oquirrh-Stansbury, West, Utah 2019–2022.

Year	Limited-entry permits*	Harvest-objective quota	Male harvest	Female harvest	Total harvest	Mean age	% permits filled	% quota filled	% females	% adult females	% ≥ 5 yrs old	Cougar treed / day	Wildlife Services harvest	Other mortality	Total harvest + mortality
2019	—	4	3	1	4	5.0	—	100	25	25	67	0.22	2	0	6
2020	—	18	5	6	11	3.3	—	61	55	27	40	0.16	4	0	15
2021	—	Unlimited	2	2	4	2.3	—	—	50	50	0	0.22	2	0	6
2022	—	Unlimited	1	0	1	3.0	—	—	0	0	0	0.36	0	0	1
Mean	—	11	3	2	5	3.4	—	81	32	26	27	0.19	3	0	7

*Includes limited-entry, conservation and expo permits.

Total cougar mortality for unit 28 – Panguitch Lake, Utah 1990–2022.

Year	Limited-entry permits*	Harvest-objective quota	Male harvest	Female harvest	Total harvest	Mean age	% permits filled	% quota filled	% females	% adult females	% ≥ 5 yrs old	Cougar treed / day	Wildlife Services harvest	Other mortality	Total harvest + mortality
1990	14	—	3	3	6	—	43	—	50	—	—	—	1	0	7
1991	14	—	4	2	6	—	43	—	33	—	—	—	0	0	6
1992	14	—	3	1	4	—	29	—	25	—	—	—	0	0	4
1993	14	—	9	3	12	—	86	—	25	—	—	—	0	1	13
1994	14	—	6	4	10	—	71	—	40	—	—	—	0	0	10
1995	17	—	8	5	13	—	76	—	38	—	—	—	0	0	13
1996	20	—	7	7	14	2.6	70	—	50	—	—	—	0	0	14
1997	20	—	10	5	15	2.9	75	—	33	—	—	—	0	2	17
1998	20	—	5	7	12	3.5	60	—	58	—	—	0.44	3	2	17
1999	15	—	5	5	10	3.3	67	—	50	—	0	0.51	1	0	11
2000	15	—	7	2	9	3.6	60	—	22	—	22	0.33	0	0	9
2001	—	10	6	4	10	2.8	—	100	40	—	10	0.77	2	0	12
2002	—	13	6	9	15	3.6	—	115	60	—	27	0.27	0	0	15
2003	12	6	7	6	13	2.9	67	83	46	—	0	0.19	2	2	17
2004	13	6	7	10	17	3.6	85	100	59	—	21	0.50	0	0	17
2005	11	8	7	4	11	2.8	36	88	36	—	11	0.31	0	1	12
2006	13	—	9	5	14	3.3	108	—	36	—	21	0.29	0	0	14
2007	12	—	8	6	14	2.6	117	—	43	—	8	0.25	1	1	16
2008	11	—	8	3	11	3.2	100	—	27	18	9	0.38	0	0	11
2009	11	—	6	5	11	2.8	100	—	45	18	10	0.41	0	0	11
2010	10	—	6	4	10	3.3	100	—	40	20	10	0.21	0	1	11
2011	11	—	8	5	13	3.6	100	—	38	38	15	0.37	0	1	14
2012	11	—	7	3	10	2.7	—	—	30	20	0	0.21	0	0	10
2013	11	—	5	3	8	3.4	—	—	38	25	25	0.20	0	0	8

*Includes limited-entry, conservation and expo permits.

Total cougar mortality for unit 28 – Panguitch Lake, Utah 1990–2022 (continued).

Year	Limited- entry permits*	Harvest- objective quota	Male harvest	Female harvest	Total harvest	Mean age	% permits filled	% quota filled	% females	% adult females	% ≥ 5 yrs old	Cougar treed / day	Wildlife Services harvest	Other mortality	Total harvest + mortality
2014	10	—	6	3	9	3.2	—	—	33	22	20	0.33	0	0	9
2015	10	—	7	3	10	2.2	100	—	30	20	0	0.20	0	0	10
2016	10	—	10	0	10	3.5	100	—	0	0	30	0.42	0	0	10
2017	10	—	7	3	10	3.3	100	—	30	30	22	0.36	0	0	10
2018	10	—	10	1	11	3.1	110	—	9	0	13	0.42	0	0	11
2019	12	—	10	5	15	3.2	125	—	33	20	13	0.33	1	0	16
2020	12	—	8	5	13	3.1	108	—	38	23	17	0.38	0	1	14
2021	18	—	11	9	20	2.9	106	—	45	35	11	0.27	1	1	22
2022	—	20	14	9	23	2.4	—	115	39	26	0	0.24	1	1	25
Mean	13	11	7	5	12	3.1	82	100	37	20	13	0.35	0	0	13

*Includes limited-entry, conservation and expo permits.

Total cougar mortality for unit 27 – Paunsaugunt, Utah 1990–2022.

Year	Limited-entry permits*	Harvest-objective quota	Male harvest	Female harvest	Total harvest	Mean age	% permits filled	% quota filled	% females	% adult females	% ≥ 5 yrs old	Cougar treed / day	Wildlife Services harvest	Other mortality	Total harvest + mortality
1990	14	—	4	1	5	—	36	—	20	—	—	—	0	0	5
1991	14	—	5	0	5	—	36	—	0	—	—	—	0	0	5
1992	14	—	4	1	5	—	36	—	20	—	—	—	0	1	6
1993	14	—	6	0	6	—	43	—	0	—	—	—	0	1	7
1994	14	—	3	3	6	—	43	—	50	—	—	—	0	0	6
1995	16	—	1	1	2	—	13	—	50	—	—	—	0	0	2
1996	20	—	10	6	16	3.1	80	—	38	—	—	—	2	1	19
1997	—	12	8	5	13	4.2	—	108	38	—	—	—	3	0	16
1998	—	12	9	5	14	2.8	—	117	36	—	—	0.09	0	1	15
1999	—	10	5	3	8	4.9	—	80	38	—	—	0.20	0	0	8
2000	—	10	9	3	12	3.3	—	120	25	—	17	0.18	0	1	13
2001	—	10	7	3	10	2.7	—	100	30	—	20	0.55	2	1	13
2002	—	10	4	7	11	4.2	—	110	64	—	30	0.16	1	1	13
2003	12	5	6	4	10	4.3	50	80	40	—	38	0.36	0	1	11
2004	12	5	2	4	6	4.8	33	40	67	—	40	0.10	1	0	7
2005	11	5	2	0	2	3.0	18	0	0	—	0	0.02	1	0	3
2006	8	—	2	2	4	3.7	50	—	50	—	0	0.13	0	0	4
2007	7	—	3	3	6	2.2	86	—	50	—	0	0.26	0	1	7
2008	9	—	2	1	3	2.0	33	—	33	0	0	0.26	0	0	3
2009	9	—	4	1	5	3.4	56	—	20	20	40	0.25	1	0	6
2010	9	—	2	1	3	2.5	33	—	33	33	0	0.41	0	1	4
2011	9	—	4	3	7	3.3	78	—	43	29	33	0.39	0	0	7
2012	9	—	5	0	5	3.6	—	—	0	0	40	0.20	1	1	7
2013	9	—	1	1	2	7.5	—	—	50	50	100	0.20	0	1	3

*Includes limited-entry, conservation and expo permits.

Total cougar mortality for unit 27 – Paunsaugunt, Utah 1990–2022 (continued).

Year	Limited- entry permits*	Harvest- objective quota	Male harvest	Female harvest	Total harvest	Mean age	% permits filled	% quota filled	% females	% adult females	% ≥ 5 yrs old	Cougar treed / day	Wildlife Services harvest	Other mortality	Total harvest + mortality
2014	7	—	5	2	7	4.4	—	—	29	29	20	0.30	0	0	7
2015	8	—	4	2	6	4.2	75	—	33	17	50	0.19	1	0	7
2016	—	10	3	5	8	4.8	—	80	63	38	75	0.13	0	0	8
2017	—	10	3	1	4	2.3	—	40	25	0	0	0.16	0	0	4
2018	—	10	1	0	1	2.0	—	10	0	0	0	0.07	0	1	2
2019	10	—	2	0	2	4.5	20	—	0	0	50	0.07	0	0	2
2020	10	—	7	3	10	3.0	100	—	30	10	22	0.16	0	0	10
2021	—	14	10	4	14	3.1	—	100	29	29	21	0.37	0	2	16
2022	—	20	7	5	12	2.7	—	55	42	33	11	0.26	0	2	14
Mean	11	10	5	2	7	3.6	50	74	32	19	26	0.22	0	1	8

*Includes limited-entry, conservation and expo permits.

Total cougar mortality for unit 30 – Pine Valley, Utah 2008–2014.

Year	Limited- entry permits*	Harvest- objective quota	Male harvest	Female harvest	Total harvest	Mean age	% permits filled	% quota filled	% females	% adult females	% ≥ 6 yrs old	Cougar treed / day	Wildlife Services harvest	Other mortality	Total harvest + mortality
2008	19	—	10	7	17	3.1	89	—	41	18	13	0.23	0	0	17
2009	19	—	11	9	20	3.1	105	—	45	25	5	0.31	0	0	20
2010	19	—	7	6	13	3.6	68	—	46	31	0	0.13	0	1	14
2011	15	—	9	6	15	3.3	100	—	40	33	7	0.37	0	0	15
2012	15	—	9	1	10	2.4	—	—	10	10	0	0.50	0	0	10
2013	15	—	8	3	11	3.3	—	—	27	18	9	0.19	0	0	11
2014	12	—	9	1	10	3.0	83	—	10	0	0	—	0	0	10
Mean	16	—	9	5	14	3.1	84	—	31	19	5	0.29	0	0	14

*Includes limited-entry, conservation and expo permits.
Subunits were recombined in 2008.

Total cougar mortality for unit 30c – Pine Valley, Browse, Utah 1996–2007.

Year	Limited- entry permits*	Harvest- objective quota	Male harvest	Female harvest	Total harvest	Mean age	% permits filled	% quota filled	% females	% adult females	% ≥ 6 yrs old	Cougar treed / day	Wildlife Services harvest	Other mortality	Total harvest + mortality
1996	15	—	4	1	5	3.0	33	—	20	—	0	—	0	0	5
1997	—	10	3	1	4	3.3	—	40	25	—	23	—	0	0	4
1998	—	10	3	4	7	3.8	—	70	57	—	14	0.21	0	0	7
1999	—	10	1	1	2	2.8	—	20	50	—	13	0.41	0	0	2
2000	—	10	1	0	1	2.6	—	10	0	—	11	0.18	0	0	1
2001	—	10	4	3	7	2.3	—	70	43	—	0	0.25	0	0	7
2002	—	10	2	0	2	1.5	—	20	0	—	0	0.19	0	0	2
2003	—	10	0	0	0	—	—	0	—	—	—	0.00	0	0	0
2004	—	10	2	1	3	1.7	—	30	33	—	0	—	0	0	3
2005	—	10	1	0	1	3.0	—	10	0	—	0	0.27	0	0	1
2006	8	—	2	3	5	3.5	63	—	60	—	0	0.11	0	0	5
2007	7	—	2	1	3	1.7	43	—	33	—	0	0.02	0	0	3
Mean	10	10	2	1	3	2.6	46	30	29	—	6	0.18	0	0	3

*Includes limited-entry, conservation and expo permits.

Total cougar mortality for unit 30a – Pine Valley, North, Utah 2015–2022.

Year	Limited-entry permits*	Harvest-objective quota	Male harvest	Female harvest	Total harvest	Mean age	% permits filled	% quota filled	% females	% adult females	% ≥ 5 yrs old	Cougar treed / day	Wildlife Services harvest	Other mortality	Total harvest + mortality
2015	8	—	1	1	2	2.0	25	—	50	50	0	0.00	0	0	2
2016	—	8	7	1	8	5.0	—	100	13	13	25	0.24	0	0	8
2017	—	10	9	1	10	3.1	—	100	10	10	11	1.44	0	0	10
2018	—	12	8	3	11	3.8	—	92	27	18	23	0.21	0	0	11
2019	—	14	11	4	15	3.2	—	107	27	20	23	0.07	0	0	15
2020	—	16	12	4	16	3.2	—	88	25	19	15	0.34	1	0	17
2021	—	20	11	8	19	2.6	—	95	42	37	12	0.13	0	1	20
2022	—	26	9	13	22	2.4	—	85	59	41	6	0.17	0	1	23
Mean	15	15	9	5	13	3.2	77	95	31	20	13	0.31	0	0	14

*Includes limited-entry, conservation and expo permits.

Total cougar mortality for unit 30b – Pine Valley, South, Utah 2015–2022.

Year	Limited-entry permits*	Harvest-objective quota	Male harvest	Female harvest	Total harvest	Mean age	% permits filled	% quota filled	% females	% adult females	% ≥ 5 yrs old	Cougar treed / day	Wildlife Services harvest	Other mortality	Total harvest + mortality
2015	—	10	5	2	7	2.9	—	70	29	29	0	0.16	0	0	7
2016	—	10	5	4	9	3.9	—	90	44	22	25	0.09	0	0	9
2017	—	11	5	3	8	4.3	—	73	38	38	43	0.18	0	0	8
2018	—	12	3	2	5	2.8	—	42	40	40	0	0.17	0	0	5
2019	—	12	4	2	6	2.4	—	50	33	17	0	0.12	0	0	6
2020	—	13	5	2	7	3.7	—	54	29	29	40	0.22	0	1	8
2021	—	Unlimited	9	1	10	2.6	—	—	10	0	0	0.11	0	1	11
2022	—	Unlimited	6	3	9	1.9	—	—	33	22	0	0.17	0	1	10
Mean	—	11	5	2	8	3.0	—	63	32	23	13	0.15	0	0	8

*Includes limited-entry, conservation and expo permits.

Total cougar mortality for unit 30ab – Pine Valley, West Pine Valley/Commanche, Utah 1990–2007.

Year	Limited- entry permits*	Harvest- objective quota	Male harvest	Female harvest	Total harvest	Mean age	% permits filled	% quota filled	% females	% adult females	% ≥ 6 yrs old	Cougar treed / day	Wildlife Services harvest	Other mortality	Total harvest + mortality
1990	40	—	14	1	15	—	38	—	7	—	—	—	1	2	18
1991	40	—	7	5	12	—	30	—	42	—	—	—	0	1	13
1992	40	—	7	6	13	—	33	—	46	—	—	—	0	1	14
1993	40	—	11	4	15	—	38	—	27	—	—	—	0	1	16
1994	42	—	10	10	20	—	48	—	50	—	—	—	0	0	20
1995	50	—	12	6	18	—	36	—	33	—	—	—	0	0	18
1996	50	—	11	6	17	2.6	34	—	35	—	0	—	0	1	18
1997	—	40	21	16	37	3.8	—	93	43	—	23	—	0	2	39
1998	—	40	13	16	29	2.3	—	73	55	—	14	0.21	0	0	29
1999	—	30	11	11	22	2.8	—	73	50	—	13	0.41	0	0	22
2000	—	30	11	8	19	2.6	—	63	42	—	11	0.18	0	0	19
2001	—	25	8	13	21	3.5	—	84	62	—	17	0.32	0	0	21
2002	20	10	7	4	11	2.5	40	30	36	—	10	0.18	2	1	14
2003	20	10	11	8	19	2.7	30	130	42	—	0	0.10	0	0	19
2004	20	10	10	5	15	2.7	35	80	33	—	8	0.18	0	1	16
2005	18	10	6	4	10	2.0	39	30	40	—	0	0.16	0	1	11
2006	15	—	11	5	16	3.5	107	—	31	—	13	0.13	0	0	16
2007	14	—	7	3	10	3.4	71	—	30	—	11	0.12	0	0	10
Mean	31	23	10	7	18	2.9	44	73	39	—	10	0.20	0	1	19

*Includes limited-entry, conservation and expo permits.

Total cougar mortality for unit 25c – Plateau, Boulder, Utah 1990–2022.

Year	Limited-entry permits*	Harvest-objective quota	Male harvest	Female harvest	Total harvest	Mean age	% permits filled	% quota filled	% females	% adult females	% ≥ 5 yrs old	Cougar treed / day	Wildlife Services harvest	Other mortality	Total harvest + mortality
1990	10	—	1	1	2	—	20	—	50	—	—	—	0	0	2
1991	10	—	3	1	4	—	40	—	25	—	—	—	0	2	6
1992	10	—	3	1	4	—	40	—	25	—	—	—	0	0	4
1993	13	—	4	4	8	—	62	—	50	—	—	—	0	0	8
1994	15	—	2	2	4	—	27	—	50	—	—	—	0	0	4
1995	18	—	5	1	6	—	33	—	17	—	—	—	1	2	9
1996	20	—	8	5	13	4.2	65	—	38	—	—	—	1	1	15
1997	—	20	11	16	27	4.1	—	135	59	—	—	—	3	4	34
1998	—	20	11	11	22	3.2	—	110	50	—	—	0.32	1	0	23
1999	—	15	6	6	12	3.1	—	80	50	—	—	0.32	0	0	12
2000	—	10	7	4	11	2.8	—	110	36	—	27	0.33	0	0	11
2001	—	10	4	7	11	3.3	—	110	64	—	25	0.46	0	0	11
2002	—	8	6	3	9	3.6	—	113	33	—	25	0.27	1	0	10
2003	10	4	4	3	7	2.7	30	100	43	—	0	0.57	0	1	8
2004	18	4	5	9	14	3.6	56	100	64	—	15	0.43	3	0	17
2005	—	15	11	4	15	2.4	—	100	27	—	7	0.19	3	3	21
2006	14	—	11	4	15	3.8	107	—	27	—	25	0.28	0	0	15
2007	14	—	6	4	10	2.6	71	—	40	—	20	0.50	0	1	11
2008	13	—	6	5	11	4.5	69	—	45	27	30	0.19	1	1	13
2009	9	—	5	4	9	4.2	100	—	44	33	33	0.12	1	2	12
2010	10	—	5	4	9	4.4	90	—	44	44	22	0.25	3	2	14
2011	16	—	9	5	14	3.5	88	—	36	21	25	0.39	2	4	20
2012	16	—	2	2	4	3.0	—	—	50	50	25	0.31	0	1	5
2013	16	—	12	5	17	3.3	—	—	29	6	33	0.37	1	0	18

*Includes limited-entry, conservation and expo permits.

Total cougar mortality for unit 25c – Plateau, Boulder, Utah 1990–2022 (continued).

Year	Limited- entry permits*	Harvest- objective quota	Male harvest	Female harvest	Total harvest	Mean age	% permits filled	% quota filled	% females	% adult females	% ≥ 5 yrs old	Cougar treed / day	Wildlife Services harvest	Other mortality	Total harvest + mortality
2014	11	—	2	2	4	4.0	—	—	50	25	33	0.20	4	1	9
2015	11	—	7	4	11	2.3	100	—	36	18	0	0.45	2	2	15
2016	11	—	7	3	10	6.0	82	—	30	30	70	0.17	3	1	14
2017	14	—	10	3	13	3.6	93	—	23	8	23	0.22	1	0	14
2018	14	—	10	4	14	3.9	100	—	29	29	8	0.25	4	0	18
2019	16	—	9	5	14	4.5	88	—	36	29	38	0.27	2	0	16
2020	24	—	10	3	13	3.5	54	—	23	23	23	0.14	0	0	13
2021	—	Unlimited	19	18	37	3.2	—	—	49	35	23	0.54	0	1	38
2022	—	Unlimited	13	8	21	2.8	—	—	38	29	16	0.25	0	0	21
Mean	14	12	7	5	12	3.6	66	106	40	26	24	0.31	1	1	14

*Includes limited-entry, conservation and expo permits.

Total cougar mortality for unit 25a – Plateau, Fishlake, Utah 1990–2022.

Year	Limited-entry permits*	Harvest-objective quota	Male harvest	Female harvest	Total harvest	Mean age	% permits filled	% quota filled	% females	% adult females	% ≥ 5 yrs old	Cougar treed / day	Wildlife Services harvest	Other mortality	Total harvest + mortality
1990	30	—	10	6	16	—	53	—	38	—	—	—	3	3	22
1991	30	—	13	4	17	—	57	—	24	—	—	—	6	3	26
1992	30	—	14	7	21	—	70	—	33	—	—	—	2	3	26
1993	36	—	23	7	30	—	83	—	23	—	—	—	7	3	40
1994	36	—	12	11	23	—	64	—	48	—	—	—	3	2	28
1995	43	—	11	16	27	—	63	—	59	—	—	—	4	8	39
1996	40	—	15	8	23	3.2	58	—	35	—	—	—	4	0	27
1997	45	—	11	20	31	4.2	69	—	65	—	—	—	4	1	36
1998	25	—	6	3	9	2.5	36	—	33	—	—	0.32	1	0	10
1999	15	—	6	3	9	3.1	60	—	33	—	—	0.32	0	0	9
2000	15	—	9	2	11	2.8	73	—	18	—	0	0.33	0	2	13
2001	15	—	5	5	10	3.8	67	—	50	—	20	0.28	0	1	11
2002	—	8	5	6	11	2.1	—	138	55	—	0	0.28	3	1	15
2003	6	4	6	2	8	2.0	67	100	25	—	14	0.32	0	3	11
2004	5	4	5	3	8	3.3	20	175	38	—	17	0.25	0	1	9
2005	6	8	7	5	12	1.8	67	100	42	—	0	0.12	0	1	13
2006	11	—	7	4	11	2.7	100	—	36	—	18	0.13	0	1	12
2007	11	—	6	3	9	3.5	82	—	33	—	17	0.29	0	3	12
2008	10	—	6	3	9	2.7	80	—	33	11	11	0.16	0	1	10
2009	7	—	6	4	10	3.1	129	—	40	20	10	0.20	0	1	11
2010	7	—	6	1	7	3.1	71	—	14	14	14	0.13	0	1	8
2011	8	—	6	5	11	3.8	125	—	45	45	27	0.27	3	0	14
2012	8	—	8	5	13	2.8	—	—	38	31	0	0.26	2	0	15
2013	8	—	9	1	10	3.8	—	—	10	10	33	0.30	1	0	11

*Includes limited-entry, conservation and expo permits.

Total cougar mortality for unit 25a – Plateau, Fishlake, Utah 1990–2022 (continued).

Year	Limited- entry permits*	Harvest- objective quota	Male harvest	Female harvest	Total harvest	Mean age	% permits filled	% quota filled	% females	% adult females	% ≥ 5 yrs old	Cougar treed / day	Wildlife Services harvest	Other mortality	Total harvest + mortality
2014	10	—	9	4	13	3.5	—	—	31	23	17	0.29	0	1	14
2015	10	—	6	4	10	2.9	90	—	40	20	22	0.28	0	0	10
2016	12	—	8	3	11	4.5	83	—	27	27	38	0.18	0	1	12
2017	16	—	9	2	11	2.9	69	—	18	9	0	0.22	0	2	13
2018	16	—	11	5	16	2.6	100	—	31	13	9	0.26	1	3	20
2019	16	—	7	7	14	3.1	88	—	50	21	15	0.18	0	1	15
2020	12	—	9	4	13	2.5	100	—	31	15	0	0.11	0	2	15
2021	12	—	8	4	12	2.1	92	—	33	17	0	0.27	0	0	12
2022	—	Unlimited	9	13	22	2.3	—	—	59	41	10	0.23	0	1	23
Mean	18	6	9	5	14	3.0	80	128	36	21	13	0.24	1	2	17

*Includes limited-entry, conservation and expo permits.

Total cougar mortality for unit 25b – Plateau, Thousand Lakes, Utah 1994–2022.

Year	Limited- entry permits*	Harvest- objective quota	Male harvest	Female harvest	Total harvest	Mean age	% permits filled	% quota filled	% females	% adult females	% ≥ 5 yrs old	Cougar treed / day	Wildlife Services harvest	Other mortality	Total harvest + mortality
1994	10	—	2	5	7	—	70	—	71	—	—	—	0	0	7
1995	12	—	5	1	6	—	50	—	17	—	—	—	0	2	8
1996	12	—	2	2	4	4.3	33	—	50	—	—	—	0	0	4
1997	—	10	1	7	8	4.4	—	80	88	—	—	—	0	0	8
1998	—	10	6	4	10	3.7	—	100	40	—	—	0.32	0	0	10
1999	—	10	4	4	8	3.1	—	80	50	—	—	0.32	0	0	8
2000	—	5	3	1	4	2.8	—	80	25	—	0	0.33	0	0	4
2001	—	5	3	2	5	6.3	—	100	40	—	20	0.25	0	1	6
2002	—	4	2	2	4	3.0	—	100	50	—	25	0.18	0	0	4
2003	—	4	2	2	4	4.0	—	100	50	—	50	—	0	0	4
2004	—	10	3	3	6	4.7	—	60	50	—	67	—	0	0	6
2005	—	10	3	2	5	3.6	—	50	40	—	40	0.06	0	0	5
2006	10	—	3	0	3	2.5	30	—	0	—	0	0.10	0	0	3
2007	11	—	3	1	4	1.5	36	—	25	—	0	0.00	0	1	5
2008	7	—	1	0	1	—	14	—	0	0	—	0.20	0	0	1
2009	5	—	2	1	3	2.7	60	—	33	33	0	0.09	0	0	3
2010	5	—	2	1	3	2.7	60	—	33	0	0	0.00	0	0	3
2011	10	—	2	1	3	5.3	30	—	33	33	100	0.16	0	0	3
2012	10	—	1	1	2	3.0	—	—	50	50	50	0.00	0	1	3
2013	10	—	1	2	3	5.0	—	—	67	67	50	—	0	0	3

*Includes limited-entry, conservation and expo permits.

Total cougar mortality for unit 25b – Plateau, Thousand Lakes, Utah 1994–2022 (continued).

Year	Limited- entry permits*	Harvest- objective quota	Male harvest	Female harvest	Total harvest	Mean age	% permits filled	% quota filled	% females	% adult females	% ≥ 5 yrs old	Cougar treed / day	Wildlife Services harvest	Other mortality	Total harvest + mortality
2014	5	—	1	0	1	2.0	—	—	0	0	0	0.08	0	0	1
2015	4	—	1	1	2	1.5	50	—	50	50	0	0.46	0	0	2
2016	4	—	1	1	2	6.0	50	—	50	50	50	0.29	0	1	3
2017	4	—	0	0	0	—	0	—	—	—	—	0.15	0	0	0
2018	4	—	1	3	4	3.5	100	—	75	25	100	0.27	0	0	4
2019	4	—	0	1	1	2.0	25	—	100	0	0	—	1	1	3
2020	4	—	0	1	1	3.0	25	—	100	100	0	0.39	0	0	1
2021	—	Unlimited	1	2	3	2.0	—	—	67	33	0	—	0	1	4
2022	—	Unlimited	1	0	1	1.0	—	—	0	0	0	0.23	0	0	1
Mean	7	8	2	2	4	3.3	39	83	45	28	26	0.19	0	0	4

*Includes limited-entry, conservation and expo permits.

Total cougar mortality for unit 14a – San Juan, Abajo Mountains, Utah 2002–2005, 2010–2013.

Year	Limited-entry permits*	Harvest-objective quota	Male harvest	Female harvest	Total harvest	Mean age	% permits filled	% quota filled	% females	% adult females	% ≥ 6 yrs old	Cougar treed / day	Wildlife Services harvest	Other mortality	Total harvest + mortality
2002	—	15	1	3	4	1.0	—	27	75	—	0	—	0	0	4
2003	—	15	9	7	16	3.9	—	107	44	—	25	0.56	0	1	17
2004	—	25	8	11	19	4.3	—	76	58	—	27	0.12	0	0	19
2005	—	25	4	1	5	1.0	—	20	20	—	0	0.31	0	0	5
2010	10	—	7	2	9	3.1	90	—	22	11	0	0.20	0	1	10
2011	10	—	4	0	4	4.3	40	—	0	0	25	0.35	0	1	5
2012	10	—	5	1	6	3.6	—	—	17	17	20	0.26	0	3	9
2013	10	—	2	2	4	3.5	—	—	50	50	0	0.44	0	1	5
Mean	10	20	5	3	8	3.1	65	57	36	19	12	0.32	0	1	9

*Includes limited-entry, conservation and expo permits.

Total cougar mortality for unit 14c – San Juan, Desert, Utah 2017–2022.

Year	Limited-entry permits*	Harvest-objective quota	Male harvest	Female harvest	Total harvest	Mean age	% permits filled	% quota filled	% females	% adult females	% ≥ 5 yrs old	Cougar treed / day	Wildlife Services harvest	Other mortality	Total harvest + mortality
2017	—	Unlimited	0	1	1	6.0	—	—	100	100	100	0.25	0	0	1
2018	—	Unlimited	0	0	0	—	—	—	—	—	—	—	0	0	0
2019	—	Unlimited	0	2	2	2.0	—	—	100	50	0	0.11	0	0	2
2020	—	Unlimited	0	0	0	—	—	—	—	—	—	0.06	0	0	0
2021	—	Unlimited	0	0	0	—	—	—	—	—	—	0.79	0	0	0
2022	—	Unlimited	0	0	0	—	—	—	—	—	—	0.15	0	0	0
Mean	—	11	2	1	4	3.8	—	53	48	30	50	0.27	0	0	3

*Includes limited-entry, conservation and expo permits.

Total cougar mortality for unit 14b – San Juan, Elk Ridge, Utah 2002–2005, 2010–2013.

Year	Limited- entry permits*	Harvest- objective quota	Male harvest	Female harvest	Total harvest	Mean age	% permits filled	% quota filled	% females	% adult females	% ≥ 6 yrs old	Cougar treed / day	Wildlife Services harvest	Other mortality	Total harvest + mortality
2002	—	10	1	1	2	3.0	—	20	50	—	0	—	0	0	2
2003	—	10	5	3	8	3.8	—	80	38	—	17	0.27	0	0	8
2004	—	15	3	3	6	1.0	—	40	50	—	0	—	0	0	6
2005	—	15	1	1	2	10.0	—	13	50	—	100	0.11	0	0	2
2010	—	10	4	0	4	2.0	—	40	0	0	0	0.35	0	0	4
2011	—	10	8	2	10	3.5	—	100	20	0	20	0.21	0	0	10
2012	—	—	4	2	6	2.0	—	—	33	0	0	0.38	0	0	6
2013	—	—	4	3	7	4.7	—	—	43	29	29	0.27	0	0	7
Mean	—	12	4	2	6	3.8	—	49	35	7	21	0.27	0	0	6

*Includes limited-entry, conservation and expo permits.

Total cougar mortality for unit 14 – San Juan, Mountains, Utah 1990–2001, 2006–2009, 2014–2022.

Year	Limited-entry permits*	Harvest-objective quota	Male harvest	Female harvest	Total harvest	Mean age	% permits filled	% quota filled	% females	% adult females	% ≥ 5 yrs old	Cougar treed / day	Wildlife Services harvest	Other mortality	Total harvest + mortality
1990	13	—	2	0	2	—	15	—	0	—	—	—	0	0	2
1991	13	—	3	2	5	—	38	—	40	—	—	—	0	0	5
1992	13	—	7	4	11	—	85	—	36	—	—	—	0	0	11
1993	13	—	2	2	4	—	31	—	50	—	—	—	0	1	5
1994	15	—	3	3	6	—	40	—	50	—	—	—	0	0	6
1995	24	—	7	2	9	—	38	—	22	—	—	—	0	0	9
1996	24	—	5	5	10	3.8	42	—	50	—	—	—	0	0	10
1997	—	20	13	8	21	5.1	—	105	38	—	—	—	0	1	22
1998	—	20	12	9	21	2.8	—	105	43	—	—	0.85	0	0	21
1999	—	20	6	4	10	3.1	—	50	40	—	0	0.37	0	0	10
2000	—	20	12	8	20	3.0	—	100	40	—	23	1.19	0	1	21
2001	—	25	9	8	17	3.7	—	68	47	—	—	0.48	0	0	17
2006	—	30	9	8	17	2.9	—	57	47	—	—	0.23	0	0	17
2007	—	25	10	5	16	2.6	—	64	33	—	—	0.13	0	0	16
2008	—	25	10	9	19	2.3	—	76	47	—	—	0.35	0	0	19
2009	—	20	8	8	16	3.1	—	80	50	—	—	0.47	0	1	17
2014	—	—	10	5	15	3.5	—	—	33	20	8	0.19	0	0	15
2015	—	25	15	11	26	2.4	—	104	42	19	12	0.43	0	0	26
2016	—	25	10	5	15	2.7	—	60	33	0	18	0.24	0	1	16
2017	—	25	10	6	16	2.3	—	64	38	0	13	0.52	1	0	17
2018	—	25	11	3	14	2.4	—	56	21	0	0	0.12	0	1	15
2019	—	25	13	11	24	3.8	—	96	46	29	35	0.27	0	0	24

*Includes limited-entry, conservation and expo permits.

Unit 14 was split into subunits 14a and 14b from 2002 to 2005, and from 2010 to 2013. In 2017, the majority of the San Juan unit was renamed San Juan, Mtns, while a small western portion of the unit was split off as a new subunit, San Juan, Desert.

Total cougar mortality for unit 14 – San Juan, Mountains, Utah 1990–2001, 2006–2009, 2014–2022 (continued).

Year	Limited- entry permits*	Harvest- objective quota	Male harvest	Female harvest	Total harvest	Mean age	% permits filled	% quota filled	% females	% adult females	% ≥ 5 yrs old	Cougar treed / day	Wildlife Services harvest	Other mortality	Total harvest + mortality
2020	—	25	4	3	7	2.6	—	28	43	43	5	0.16	0	1	8
2021	—	Unlimited	14	8	22	2.3	—	—	36	23	7	0.45	0	4	26
2022	—	Unlimited	9	8	17	1.6	—	—	47	12	0	0.14	0	0	17
Mean	14	21	9	5	14	3.0	41	84	37	16	12	0.39	0	1	15

*Includes limited-entry, conservation and expo permits.

Total cougar mortality for unit 12 – San Rafael, Utah 1990–2022.

Year	Limited- entry permits*	Harvest- objective quota	Male harvest	Female harvest	Total harvest	Mean age	% permits filled	% quota filled	% females	% adult females	% ≥ 5 yrs old	Cougar treed / day	Wildlife Services harvest	Other mortality	Total harvest + mortality
1990	4	—	0	0	0	—	0	—	—	—	—	—	0	0	0
1991	4	—	1	0	1	—	25	—	0	—	—	—	0	0	1
1992	4	—	0	0	0	—	0	—	—	—	—	—	0	0	0
1993	4	—	0	0	0	—	0	—	—	—	—	—	0	0	0
1994	4	—	1	0	1	—	25	—	0	—	—	—	0	0	1
1995	4	—	0	0	0	—	0	—	—	—	—	—	0	0	0
1996	4	—	1	0	1	1.0	25	—	0	—	—	—	0	0	1
1997	4	—	0	0	0	—	0	—	—	—	—	—	0	0	0
1998	0	—	0	0	0	—	—	—	—	—	—	0.34	0	1	1
1999	—	2	2	0	2	5.5	—	100	0	—	—	0.19	0	0	2
2000	—	7	0	0	0	—	—	0	—	—	—	0.21	1	1	2
2001	—	7	1	2	3	7.0	—	43	67	—	100	0.60	2	1	6
2002	—	7	0	0	0	—	—	0	—	—	—	—	2	0	2
2003	—	7	2	0	2	2.0	—	29	0	—	50	0.00	1	0	3
2004	—	7	2	1	3	2.0	—	43	33	—	0	0.25	0	0	3
2005	—	7	0	0	0	—	—	0	—	—	—	0.10	0	0	0
2006	—	5	0	0	0	—	—	0	—	—	—	—	0	0	0
2007	—	4	1	0	1	—	—	25	0	—	—	0.60	0	0	1
2008	—	4	0	1	1	7.0	—	25	100	100	100	0.05	0	1	2
2009	—	4	1	0	1	3.0	—	25	0	0	0	0.03	0	0	1
2010	—	4	1	0	1	2.0	—	25	0	0	0	0.09	0	0	1
2011	—	3	2	1	3	3.7	—	100	33	33	33	0.12	0	0	3
2012	—	—	0	0	0	—	—	—	—	—	—	—	1	0	1
2013	—	—	1	2	3	4.5	—	—	67	33	33	0.00	0	0	3

*Includes limited-entry, conservation and expo permits.

Total cougar mortality for unit 12 – San Rafael, Utah 1990–2022 (continued).

Year	Limited- entry permits*	Harvest- objective quota	Male harvest	Female harvest	Total harvest	Mean age	% permits filled	% quota filled	% females	% adult females	% ≥ 5 yrs old	Cougar treed / day	Wildlife Services harvest	Other mortality	Total harvest + mortality
2014	—	—	1	3	4	4.0	—	—	75	50	67	1.00	0	1	5
2015	—	Unlimited	0	1	1	2.0	—	—	100	0	0	0.55	1	0	2
2016	—	Unlimited	0	2	2	1.5	—	—	100	0	0	—	2	0	4
2017	—	Unlimited	0	1	1	2.0	—	—	100	0	0	—	0	0	1
2018	—	Unlimited	0	0	0	—	—	—	—	—	—	0.20	0	0	0
2019	—	Unlimited	1	0	1	5.0	—	—	0	0	100	0.46	0	0	1
2020	—	Unlimited	0	1	1	1.0	—	—	100	0	0	0.00	1	1	3
2021	—	Unlimited	2	0	2	2.0	—	—	0	0	0	—	0	2	4
2022	—	Unlimited	0	0	0	—	—	—	—	—	—	—	0	0	0
Mean	4	5	1	0	1	3.2	9	30	39	18	32	0.27	0	0	2

*Includes limited-entry, conservation and expo permits.

Total cougar mortality for unit 9 – South Slope, Utah 1990–2001.

Year	Limited- entry permits*	Harvest- objective quota	Male harvest	Female harvest	Total harvest	Mean age	% permits filled	% quota filled	% females	% adult females	% ≥ 6 yrs old	Cougar treed / day	Wildlife Services harvest	Other mortality	Total harvest + mortality
1990	56	—	13	7	20	—	36	—	35	—	—	—	4	0	24
1991	56	—	18	12	30	—	54	—	40	—	—	—	0	1	31
1992	56	—	13	15	28	—	50	—	54	—	—	—	1	1	30
1993	57	—	14	14	28	—	49	—	50	—	—	—	2	0	30
1994	60	—	22	10	32	—	53	—	31	—	—	—	0	2	34
1995	63	—	24	10	34	—	54	—	29	—	—	—	1	2	37
1996	75	—	27	13	40	4.4	53	—	33	—	32	—	0	2	42
1997	62	—	12	9	21	3.6	34	—	43	—	11	—	1	1	23
1998	40	—	8	7	15	3.1	38	—	47	—	8	0.29	6	0	21
1999	35	—	4	6	10	3.4	29	—	60	—	9	0.26	1	0	11
2000	35	—	4	1	5	3.2	14	—	20	—	0	0.26	1	1	7
2001	35	—	7	6	13	4.2	37	—	46	—	23	0.31	0	1	14
Mean	53	—	14	9	23	3.7	42	—	41	—	14	0.28	1	1	25

*Includes limited-entry, conservation and expo permits.

Total cougar mortality for unit 9bcd – South Slope, Bonanza/Diamond Mtn/Vernal, Utah 2002–2022.

Year	Limited-entry permits*	Harvest-objective quota	Male harvest	Female harvest	Total harvest	Mean age	% permits filled	% quota filled	% females	% adult females	% ≥ 5 yrs old	Cougar treed / day	Wildlife Services harvest	Other mortality	Total harvest + mortality
2002	26	—	7	3	10	3.7	38	—	30	—	30	0.06	2	0	12
2003	25	—	5	4	9	5.0	36	—	44	—	25	0.20	3	2	14
2004	—	9	3	6	9	2.7	—	100	67	—	14	—	0	0	9
2005	—	20	5	4	9	1.8	—	45	44	—	0	0.03	0	0	9
2006	—	20	6	5	11	2.8	—	55	45	—	18	0.12	2	0	13
2007	—	20	7	1	8	3.8	—	40	13	—	33	0.24	0	0	8
2008	—	15	8	5	13	3.2	—	87	38	8	33	0.50	—	—	13
2009	—	15	7	3	10	3.1	—	67	30	20	25	0.56	0	0	10
2010	—	15	13	3	16	2.8	—	107	19	6	7	0.15	0	1	17
2011	20	—	0	1	1	6.0	5	—	100	100	100	0.22	0	0	1
2012	—	—	6	6	12	3.4	—	—	50	42	9	0.25	2	0	14
2013	—	—	12	8	20	2.9	—	—	40	15	22	0.41	2	0	22
2014	—	—	7	3	10	4.1	—	—	30	20	38	0.24	2	0	12
2015	—	18	8	5	13	2.4	—	72	38	8	10	0.14	0	3	16
2016	—	18	11	7	18	3.9	—	100	39	22	38	0.48	4	0	22
2017	—	18	13	6	19	4.0	—	106	32	21	26	0.00	0	0	19
2018	—	20	11	7	18	3.5	—	90	39	28	36	0.15	3	1	22
2019	—	24	13	6	19	2.7	—	79	32	16	12	0.25	4	1	24
2020	—	24	13	9	22	2.7	—	92	41	27	6	0.30	0	1	23
2021	—	24	9	8	17	2.1	—	71	47	29	0	0.17	1	0	18
2022	—	24	7	8	15	2.5	—	63	53	33	8	0.26	2	0	17
Mean	24	19	8	5	13	3.3	26	78	41	26	23	0.24	1	1	15

*Includes limited-entry, conservation and expo permits.

Total cougar mortality for unit 9a – South Slope, Yellowstone, Utah 2002–2022.

Year	Limited-entry permits*	Harvest-objective quota	Male harvest	Female harvest	Total harvest	Mean age	% permits filled	% quota filled	% females	% adult females	% ≥ 5 yrs old	Cougar treed / day	Wildlife Services harvest	Other mortality	Total harvest + mortality
2002	8	—	1	1	2	3.0	25	—	50	—	0	0.14	2	0	4
2003	8	—	2	1	3	5.3	38	—	33	—	33	0.24	0	0	3
2004	—	10	1	5	6	2.5	—	60	83	—	0	0.11	0	0	6
2005	—	10	1	0	1	2.0	—	10	0	—	0	0.18	0	0	1
2006	10	—	2	0	2	3.5	20	—	0	—	0	0.05	0	0	2
2007	—	6	4	0	4	2.0	—	67	0	—	0	0.19	0	0	4
2008	—	6	3	0	3	2.7	—	50	0	0	0	0.12	1	1	5
2009	—	6	4	0	4	3.5	—	67	0	0	25	0.16	0	1	5
2010	—	6	5	1	6	2.2	—	100	17	0	0	0.05	0	1	7
2011	8	—	2	1	3	3.0	38	—	33	33	0	0.19	1	3	7
2012	8	—	2	1	3	4.7	—	—	33	33	67	0.14	0	0	3
2013	8	—	3	1	4	4.3	—	—	25	25	50	0.15	0	1	5
2014	—	—	6	2	8	3.9	—	—	25	25	14	0.12	0	0	8
2015	—	10	2	2	4	2.8	—	40	50	50	0	0.13	0	2	6
2016	—	10	4	4	8	4.9	—	80	50	50	71	0.33	2	1	11
2017	—	10	4	3	7	3.7	—	70	43	29	33	0.17	0	0	7
2018	—	10	4	4	8	3.4	—	80	50	50	25	0.12	1	0	9
2019	—	10	6	2	8	3.7	—	80	25	17	17	0.12	2	1	11
2020	—	10	3	4	7	2.4	—	70	57	29	0	0.09	1	0	8
2021	—	Unlimited	10	4	14	1.9	—	—	29	21	11	0.13	0	0	14
2022	—	Unlimited	0	1	1	1.0	—	—	100	0	—	0.18	1	0	2
Mean	8	9	3	2	5	3.2	35	64	34	22	17	0.15	1	1	6

*Includes limited-entry, conservation and expo permits.

Total cougar mortality for unit 20 – Southwest Desert, Utah 1990–2022.

Year	Limited-entry permits*	Harvest-objective quota	Male harvest	Female harvest	Total harvest	Mean age	% permits filled	% quota filled	% females	% adult females	% ≥ 5 yrs old	Cougar treed / day	Wildlife Services harvest	Other mortality	Total harvest + mortality
1990	8	—	5	3	8	—	100	—	38	—	—	—	1	2	11
1991	8	—	3	1	4	—	50	—	25	—	—	—	0	1	5
1992	8	—	0	2	2	—	25	—	100	—	—	—	0	1	3
1993	8	—	3	3	6	—	75	—	50	—	—	—	0	1	7
1994	11	—	3	4	7	—	64	—	57	—	—	—	0	0	7
1995	12	—	2	3	5	—	42	—	60	—	—	—	0	0	5
1996	12	—	4	0	4	2.8	33	—	0	—	—	—	0	1	5
1997	—	12	5	4	9	4.4	—	75	44	—	—	—	0	2	11
1998	—	12	6	0	6	2.8	—	50	0	—	—	0.26	0	0	6
1999	—	12	2	2	4	3.0	—	33	50	—	0	0.29	0	0	4
2000	—	12	4	2	6	2.0	—	50	33	—	0	0.09	0	0	6
2001	—	12	8	1	9	3.5	—	75	11	—	25	0.36	0	0	9
2002	—	12	5	6	11	3.7	—	92	55	—	30	0.09	0	0	11
2003	—	12	5	4	9	2.8	—	75	44	—	25	0.07	0	0	9
2004	—	12	3	3	6	4.0	—	50	50	—	50	0.13	0	0	6
2005	—	12	6	0	6	1.8	—	50	0	—	0	0.11	0	0	6
2006	12	—	3	1	4	4.5	33	—	25	—	50	0.10	0	0	4
2007	12	—	3	4	7	3.7	58	—	57	—	33	0.04	0	0	7
2008	11	—	2	0	2	1.5	18	—	0	0	0	0.06	0	0	2
2009	8	—	1	1	2	2.5	25	—	50	0	0	0.21	0	0	2
2010	6	—	2	0	2	3.0	33	—	0	0	0	0.14	0	0	2
2011	6	—	2	1	3	4.0	50	—	33	33	33	0.08	0	0	3
2012	6	—	3	3	6	3.0	—	—	50	33	17	0.29	0	0	6
2013	6	—	4	2	6	3.6	—	—	33	33	40	0.17	0	0	6

*Includes limited-entry, conservation and expo permits.

Total cougar mortality for unit 20 – Southwest Desert, Utah 1990–2022 (continued).

Year	Limited- entry permits*	Harvest- objective quota	Male harvest	Female harvest	Total harvest	Mean age	% permits filled	% quota filled	% females	% adult females	% ≥ 5 yrs old	Cougar treed / day	Wildlife Services harvest	Other mortality	Total harvest + mortality
2014	5	—	3	0	3	3.0	—	—	0	0	33	0.10	0	0	3
2015	8	—	3	0	3	2.0	38	—	0	0	0	0.12	0	0	3
2016	—	9	5	2	7	5.4	—	78	29	29	43	0.80	0	0	7
2017	—	11	3	1	4	4.3	—	36	25	0	25	0.78	0	0	4
2018	—	13	4	6	10	3.7	—	77	60	30	17	0.13	0	0	10
2019	—	13	8	6	14	3.3	—	108	43	29	17	0.10	0	0	14
2020	—	12	5	3	8	3.4	—	67	38	38	14	0.15	0	0	8
2021	—	Unlimited	5	2	7	3.7	—	—	29	29	17	0.39	0	1	8
2022	—	Unlimited	4	0	4	2.5	—	—	0	0	25	0.17	1	0	5
Mean	9	12	4	2	6	3.2	52	65	34	18	21	0.21	0	0	6

*Includes limited-entry, conservation and expo permits.

Total cougar mortality for unit 17 – Wasatch Mtns, Utah 1990–2001.

Year	Limited- entry permits*	Harvest- objective quota	Male harvest	Female harvest	Total harvest	Mean age	% permits filled	% quota filled	% females	% adult females	% ≥ 6 yrs old	Cougar treed / day	Wildlife Services harvest	Other mortality	Total harvest + mortality
1990	10	—	2	2	4	—	40	—	50	—	—	—	0	0	4
1991	10	—	2	1	3	—	30	—	33	—	—	—	0	0	3
1992	10	—	4	0	4	—	40	—	0	—	—	—	0	1	5
1993	28	—	11	4	15	—	54	—	27	—	—	—	6	7	28
1994	30	—	9	8	17	—	57	—	47	—	—	—	1	4	22
1995	43	—	15	10	25	—	58	—	40	—	—	—	4	8	37
1996	43	—	20	11	31	3.2	72	—	35	—	17	—	1	1	33
1997	42	—	18	11	29	3.4	69	—	38	—	19	—	2	11	42
1998	60	—	21	15	36	4.6	60	—	42	—	12	0.39	2	0	38
1999	55	—	15	13	28	2.6	51	—	46	—	11	0.23	1	0	29
2000	40	12	27	20	47	3.0	82	100	43	—	15	0.32	4	0	51
2001	40	24	21	26	47	2.8	68	83	55	—	7	0.26	5	5	57
Mean	34	18	14	10	24	3.3	57	92	38	—	14	0.30	2	3	29

*Includes limited-entry, conservation and expo permits.

Total cougar mortality for unit 17c – Wasatch Mtns, Avintaquin-Wildcat, Utah 2004–2020.

Year	Limited-entry permits*	Harvest-objective quota	Male harvest	Female harvest	Total harvest	Mean age	% permits filled	% quota filled	% females	% adult females	% ≥ 5 yrs old	Cougar treed / day	Wildlife Services harvest	Other mortality	Total harvest + mortality
2004	—	15	1	9	10	2.6	—	67	90	—	0	—	0	0	10
2005	—	15	4	4	8	2.5	—	53	50	—	17	0.35	1	0	9
2006	—	15	2	2	4	1.7	—	27	50	—	0	0.16	0	0	4
2007	—	10	2	4	6	4.2	—	60	67	—	40	0.26	0	0	6
2008	—	10	6	1	7	3.3	—	70	14	0	14	0.11	0	0	7
2009	—	10	3	4	7	4.3	—	70	57	43	33	0.08	0	1	8
2010	—	10	5	4	9	3.4	—	90	44	33	14	0.30	1	1	11
2011	—	13	3	3	6	3.7	—	46	50	50	33	0.23	0	0	6
2012	—	—	3	4	7	3.3	—	—	57	29	29	0.16	0	0	7
2013	—	—	5	5	10	4.2	—	—	50	20	50	0.16	1	1	12
2014	—	—	15	3	18	3.2	—	—	17	11	18	0.45	0	0	18
2015	—	15	8	4	12	2.7	—	80	33	0	27	0.25	1	0	13
2016	—	15	8	3	11	2.9	—	73	27	18	11	0.26	0	0	11
2017	—	15	10	5	15	2.9	—	100	33	20	20	0.49	1	0	16
2018	—	15	11	4	15	2.6	—	100	27	7	10	1.00	0	0	15
2019	—	20	10	2	12	3.0	—	60	17	8	27	0.63	0	0	12
2020	—	30	5	8	13	3.2	—	43	62	38	18	0.45	0	0	13
Mean	—	15	6	4	10	3.2	—	71	44	21	21	0.33	0	0	10

*Includes limited-entry, conservation and expo permits.

Total cougar mortality for unit 17a2 – Wasatch Mtns, Cascade, Utah 2002–2022.

Year	Limited-entry permits*	Harvest-objective quota	Male harvest	Female harvest	Total harvest	Mean age	% permits filled	% quota filled	% females	% adult females	% ≥ 5 yrs old	Cougar treed / day	Wildlife Services harvest	Other mortality	Total harvest + mortality
2002	—	12	7	6	13	2.6	—	108	46	—	17	—	0	1	14
2003	—	15	6	4	10	3.1	—	67	40	—	30	0.25	0	0	10
2004	—	15	4	4	8	3.8	—	53	50	—	33	0.50	0	0	8
2005	—	12	1	2	3	1.3	—	25	67	—	0	0.18	0	0	3
2006	—	12	5	3	8	4.0	—	67	38	—	57	0.18	0	0	8
2007	—	12	3	0	3	3.0	—	25	0	—	33	0.08	0	0	3
2008	—	9	3	6	9	3.7	—	100	67	22	22	0.49	0	0	9
2009	—	9	2	2	4	2.3	—	44	50	25	0	—	0	0	4
2010	—	9	4	4	8	2.3	—	89	50	13	0	0.37	0	0	8
2011	—	10	2	6	8	4.6	—	80	75	75	50	0.19	0	0	8
2012	—	—	1	5	6	2.7	—	—	83	50	0	0.07	0	0	6
2013	—	—	3	3	6	3.0	—	—	50	33	0	0.35	0	1	7
2014	—	—	4	3	7	3.0	—	—	43	29	0	—	0	0	7
2015	—	5	3	1	4	2.0	—	80	25	25	0	0.88	0	0	4
2016	—	5	3	2	5	3.0	—	100	40	0	20	—	0	0	5
2017	—	5	3	2	5	2.4	—	100	40	20	0	0.27	0	0	5
2018	—	5	2	3	5	3.5	—	100	60	20	25	0.44	0	0	5
2019	—	4	2	2	4	2.5	—	100	50	25	0	0.36	1	0	5
2020	—	4	5	2	7	3.5	—	125	29	29	50	0.54	1	1	9
2021	—	Unlimited	6	3	9	2.5	—	—	33	22	25	0.07	0	2	11
2022	—	Unlimited	4	3	7	2.4	—	—	43	29	0	0.21	0	0	7
Mean	—	9	3	3	7	2.9	—	75	47	26	17	0.32	0	0	7

*Includes limited-entry, conservation and expo permits.

Total cougar mortality for unit 17b – Wasatch Mtns, Carrant Creek-North, Utah 2004–2020.

Year	Limited- entry permits*	Harvest- objective quota	Male harvest	Female harvest	Total harvest	Mean age	% permits filled	% quota filled	% females	% adult females	% ≥ 5 yrs old	Cougar treed / day	Wildlife Services harvest	Other mortality	Total harvest + mortality
2004	15	—	2	1	3	2.7	20	—	33	—	0	—	2	0	5
2005	14	—	3	2	5	4.5	36	—	40	—	25	0.14	0	0	5
2006	14	—	4	0	4	3.5	29	—	0	—	25	0.13	0	0	4
2007	14	—	1	2	3	1.5	21	—	67	—	0	0.25	0	0	3
2008	8	—	1	1	2	3.0	25	—	50	0	0	0.00	0	1	3
2009	7	—	4	1	5	3.4	71	—	20	20	0	0.15	2	0	7
2010	7	—	2	0	2	2.5	29	—	0	0	0	0.05	0	3	5
2011	7	—	3	0	3	3.0	43	—	0	0	0	0.21	1	3	7
2012	7	—	2	1	3	3.7	43	—	33	33	33	0.15	1	0	4
2013	7	—	4	1	5	5.0	71	—	20	20	60	0.46	0	0	5
2014	6	—	5	0	5	3.8	67	—	0	0	40	—	0	1	6
2015	6	—	5	0	5	4.0	83	—	0	0	25	0.32	0	0	5
2016	8	—	8	1	9	5.1	100	—	11	11	67	0.34	0	1	10
2017	10	—	6	0	6	3.3	60	—	0	0	33	0.24	0	0	6
2018	12	—	6	0	6	3.8	50	—	0	0	25	0.56	2	1	9
2019	15	—	9	0	9	3.2	60	—	0	0	11	0.37	0	0	9
2020	16	—	5	3	8	3.2	50	—	38	25	17	0.79	0	1	9
Mean	10	—	4	1	5	3.5	50	—	18	8	21	0.28	1	1	6

*Includes limited-entry, conservation and expo permits.

Total cougar mortality for Unit 17bc – Wasatch Mtns, Currant Creek/Avintaquin, Utah 2002–2003, 2021–2022.

Year	Limited-entry permits*	Harvest-objective quota	Male harvest	Female harvest	Total harvest	Mean age	% permits filled	% quota filled	% females	% adult females	% ≥ 5 yrs old	Cougar treed / day	Wildlife Services harvest	Other mortality	Total harvest + mortality
2002	26	—	8	6	14	3.6	54	—	43	—	—	0.13	3	0	17
2003	25	—	9	6	15	3.9	60	—	40	—	—	0.21	1	1	17
2021	—	Unlimited	16	15	31	2.5	—	—	48	29	18	0.26	0	1	32
2022	—	Unlimited	6	4	10	1.4	—	—	40	20	0	0.12	0	0	10
Mean	26	—	10	8	18	2.9	57	—	43	25	9	0.18	1	1	17

*Includes limited-entry, conservation and expo permits.

Total cougar mortality for Unit 17a4 – Wasatch Mtns, Salt Lake, Utah 2018–2022.

Year	Limited-entry permits*	Harvest-objective quota	Male harvest	Female harvest	Total harvest	Mean age	% permits filled	% quota filled	% females	% adult females	% ≥ 5 yrs old	Cougar treed / day	Wildlife Services harvest	Other mortality	Total harvest + mortality
2018	—	6	0	0	0	—	—	—	—	—	—	—	0	0	0
2019	—	6	0	0	0	—	—	—	—	—	—	—	0	1	1
2020	—	6	0	0	0	—	—	—	—	—	—	—	0	0	0
2021	—	Unlimited	0	0	0	—	—	—	—	—	—	—	0	0	0
2022	—	Unlimited	0	0	0	—	—	—	—	—	—	—	0	0	0
Mean	—	6	0	0	0	—	—	—	—	—	—	—	0	0	0

*Includes limited-entry, conservation and expo permits.

Total cougar mortality for unit 17a1 – Wasatch Mtns, Timpanogos, Utah 2002–2022.

Year	Limited-entry permits*	Harvest-objective quota	Male harvest	Female harvest	Total harvest	Mean age	% permits filled	% quota filled	% females	% adult females	% ≥ 5 yrs old	Cougar treed / day	Wildlife Services harvest	Other mortality	Total harvest + mortality
2002	—	12	5	5	10	2.8	—	83	50	—	20	—	0	0	10
2003	—	15	5	1	6	4.0	—	40	17	—	0	0.38	0	1	7
2004	—	15	4	0	4	2.5	—	27	0	—	0	0.47	0	0	4
2005	—	12	0	4	4	1.3	—	33	100	—	0	0.21	0	0	4
2006	—	12	3	3	6	3.8	—	50	50	—	33	0.12	0	0	6
2007	—	12	2	1	3	3.0	—	25	33	—	33	0.04	0	0	3
2008	—	9	2	7	9	3.0	—	100	78	33	14	0.27	0	1	10
2009	—	12	2	4	6	1.5	—	50	67	0	0	0.08	1	0	7
2010	—	12	3	1	4	3.3	—	33	25	25	25	0.11	0	4	8
2011	—	12	3	2	5	2.8	—	42	40	40	0	0.24	1	1	7
2012	—	—	2	0	2	1.5	—	—	0	0	0	0.08	3	0	5
2013	—	—	5	2	7	3.7	—	—	29	29	17	0.19	0	0	7
2014	—	—	1	1	2	12.0	—	—	50	50	100	—	0	1	3
2015	—	5	3	1	4	2.7	—	80	25	0	0	0.09	0	0	4
2016	—	5	3	2	5	3.6	—	100	40	40	20	0.49	0	0	5
2017	—	7	4	2	6	2.0	—	86	33	0	0	0.38	0	0	6
2018	—	7	3	5	8	2.8	—	114	63	25	20	0.00	0	1	9
2019	—	5	3	2	5	3.4	—	100	40	20	20	0.19	0	0	5
2020	—	5	3	2	5	3.6	—	100	40	40	20	0.24	1	1	7
2021	—	Unlimited	5	3	8	3.0	—	—	38	25	20	0.08	0	1	9
2022	—	Unlimited	0	1	1	—	—	—	100	0	0	0.34	0	2	3
Mean	—	10	3	2	5	3.3	—	61	44	22	16	0.21	0	1	6

*Includes limited-entry, conservation and expo permits.

Total cougar mortality for unit 17a3 – Wasatch Mtns, West-Strawberry, Utah 2002–2022.

Year	Limited-entry permits*	Harvest-objective quota	Male harvest	Female harvest	Total harvest	Mean age	% permits filled	% quota filled	% females	% adult females	% ≥ 5 yrs old	Cougar treed / day	Wildlife Services harvest	Other mortality	Total harvest + mortality
2002	13	—	5	5	10	3.3	77	—	50	—	—	0.46	1	0	11
2003	12	—	4	3	7	6.3	58	—	43	—	—	0.32	0	2	9
2004	11	—	5	3	8	3.5	73	—	38	—	25	0.38	1	1	10
2005	11	—	6	2	8	2.3	73	—	25	—	0	0.00	1	1	10
2006	13	—	7	4	11	3.4	85	—	36	—	22	0.49	1	1	13
2007	10	—	4	2	6	3.2	60	—	33	—	20	0.37	0	0	6
2008	10	—	7	3	10	3.1	90	—	30	10	22	0.38	1	3	14
2009	11	—	6	5	11	3.7	73	—	45	45	30	0.38	1	2	14
2010	11	—	6	1	7	2.2	55	—	14	14	0	0.27	0	6	13
2011	11	—	9	5	14	3.2	91	—	36	29	15	0.35	0	4	18
2012	11	—	5	4	9	2.6	73	—	44	33	13	0.33	2	2	13
2013	11	—	4	1	5	4.5	36	—	20	20	25	0.42	1	1	7
2014	9	—	4	1	5	3.8	44	—	20	20	40	0.46	0	6	11
2015	9	—	1	3	4	4.3	44	—	75	75	50	0.35	1	2	7
2016	9	—	4	0	4	6.0	44	—	0	0	67	0.41	1	3	8
2017	11	—	6	1	7	2.9	64	—	14	0	14	0.46	1	2	10
2018	11	—	9	1	10	2.9	91	—	10	10	0	0.40	1	0	11
2019	11	—	7	2	9	3.8	82	—	22	22	22	0.29	0	2	11
2020	12	—	10	2	12	2.9	92	—	17	8	9	0.44	1	2	15
2021	11	—	8	3	11	3.1	100	—	27	18	18	0.38	0	0	11
2022	15	—	11	0	11	2.3	73	—	0	0	10	0.37	0	0	11
Mean	11	—	6	2	9	3.5	70	—	29	19	21	0.37	1	2	11

*Includes limited-entry, conservation and expo permits.

2002, 2003, and 2004 unit was called 17a Wasatch Mountains, West.

Total cougar mortality for unit 19a – West Desert, Mtn Ranges, Utah 1990–2022.

Year	Limited-entry permits*	Harvest-objective quota	Male harvest	Female harvest	Total harvest	Mean age	% permits filled	% quota filled	% females	% adult females	% ≥ 5 yrs old	Cougar treed / day	Wildlife Services harvest	Other mortality	Total harvest + mortality
1990	17	—	2	0	2	—	12	—	0	—	—	—	0	0	2
1991	17	—	0	1	1	—	6	—	100	—	—	—	3	1	5
1992	17	—	0	1	1	—	6	—	100	—	—	—	0	1	2
1993	20	—	3	1	4	—	20	—	25	—	—	—	2	1	7
1994	20	—	2	3	5	—	25	—	60	—	—	—	3	0	8
1995	20	—	4	4	8	—	40	—	50	—	—	—	3	6	17
1996	20	—	4	2	6	4.7	30	—	33	—	—	—	0	1	7
1997	—	10	4	6	10	4.8	—	100	60	—	—	—	0	0	10
1998	—	10	1	3	4	4.1	—	40	75	—	—	0.29	2	1	7
1999	—	10	1	2	3	3.2	—	30	67	—	—	0.20	0	0	3
2000	—	10	2	1	3	2.9	—	30	33	—	0	0.17	0	0	3
2001	—	8	3	0	3	3.0	—	38	0	—	0	0.29	0	0	3
2002	—	8	1	3	4	4.3	—	50	75	—	25	0.02	0	0	4
2003	—	8	2	0	2	4.0	—	25	0	—	0	0.00	0	0	2
2004	—	8	0	1	1	12.0	—	13	100	—	100	0.00	0	0	1
2005	—	8	1	1	2	2.0	—	25	50	—	0	0.14	0	0	2
2006	8	—	2	2	4	5.5	50	—	50	—	75	0.47	0	0	4
2007	8	—	0	1	1	5.0	13	—	100	—	100	0.00	0	0	1
2008	6	—	0	0	0	—	0	—	—	—	—	0.00	0	1	1
2009	6	—	0	3	3	7.0	50	—	100	100	67	0.29	0	1	4
2010	3	—	1	0	1	4.0	33	—	0	0	0	0.11	0	0	1
2011	4	—	2	1	3	3.7	75	—	33	0	33	0.14	0	0	3
2012	4	—	0	0	0	—	—	—	—	—	—	0.08	0	0	0
2013	4	—	0	0	0	—	—	—	—	—	—	0.22	0	0	0

*Includes limited-entry, conservation and expo permits.

Total cougar mortality for unit 19a – West Desert, Mtn Ranges, Utah 1990–2022 (continued).

Year	Limited-entry permits*	Harvest-objective quota	Male harvest	Female harvest	Total harvest	Mean age	% permits filled	% quota filled	% females	% adult females	% ≥ 5 yrs old	Cougar treed / day	Wildlife Services harvest	Other mortality	Total harvest + mortality
2014	4	—	0	0	0	—	—	—	—	—	—	0.60	0	0	0
2015	4	—	0	0	0	—	0	—	—	—	—	0.33	0	0	0
2016	—	4	3	1	4	5.5	—	100	25	0	50	1.28	0	0	4
2017	—	8	0	1	1	2.0	—	13	100	0	0	0.23	0	0	1
2018	—	8	0	1	1	2.0	—	13	100	0	0	0.47	0	0	1
2019	—	8	4	0	4	3.3	—	50	0	0	25	—	1	0	5
2020	—	8	3	2	5	3.8	—	63	40	40	0	0.00	0	0	5
2021	—	8	2	1	3	2.5	—	38	33	0	0	0.00	0	0	3
2022	—	8	0	0	0	—	—	—	—	—	—	—	0	0	0
Mean	11	8	1	1	3	4.2	21	42	52	16	28	0.23	0	0	4

*Includes limited-entry, conservation and expo permits.

Total cougar mortality for unit 19c – West Desert, Tintic, Utah 2002.

Year	Limited-entry permits*	Harvest-objective quota	Male harvest	Female harvest	Total harvest	Mean age	% permits filled	% quota filled	% females	% adult females	% ≥ 6 yrs old	Cougar treed / day	Wildlife Services harvest	Other mortality	Total harvest + mortality
2002	10	—	3	3	6	3.2	60	—	50	—	0.0	—	0	0	6
Mean	10	—	3	3	6	3.2	60	—	50	—	0.0	—	0	0	6

*Includes limited-entry, conservation and expo permits.

Total cougar mortality for unit 19b – West Desert, Tintic-Vernon, Utah 1990–2022.

Year	Limited-entry permits*	Harvest-objective quota	Male harvest	Female harvest	Total harvest	Mean age	% permits filled	% quota filled	% females	% adult females	% ≥ 5 yrs old	Cougar treed / day	Wildlife Services harvest	Other mortality	Total harvest + mortality
1990	11	—	3	2	5	—	45	—	40	—	—	—	3	0	8
1991	11	—	5	0	5	—	45	—	0	—	—	—	1	2	8
1992	11	—	3	1	4	—	36	—	25	—	—	—	4	0	8
1993	10	—	2	2	4	—	40	—	50	—	—	—	3	0	7
1994	10	—	2	2	4	—	40	—	50	—	—	—	8	1	13
1995	15	—	3	5	8	—	53	—	63	—	—	—	0	0	8
1996	15	—	4	7	11	4.7	73	—	64	—	—	—	1	3	15
1997	—	5	1	7	8	4.8	—	160	88	—	—	—	1	1	10
1998	—	5	3	5	8	4.1	—	160	63	—	—	0.29	0	0	8
1999	8	—	3	0	3	—	38	—	0	—	—	0.20	0	0	3
2000	8	—	2	3	5	—	63	—	60	—	20	0.17	0	0	5
2001	—	7	4	3	7	4.1	—	100	43	—	29	0.38	0	0	7
2002	15	—	1	3	4	2.0	27	—	75	—	0	0.25	1	0	5
2003	15	—	6	0	6	2.4	40	—	0	—	0	0.14	0	0	6
2004	15	—	1	2	3	3.0	20	—	67	—	0	0.48	1	0	4
2005	15	—	4	1	5	2.3	33	—	20	—	0	0.10	0	0	5
2006	9	—	3	3	6	3.3	67	—	50	—	33	0.28	0	0	6
2007	8	—	4	7	11	3.4	138	—	64	—	22	0.14	0	0	11
2008	6	—	2	1	3	2.3	50	—	33	0	0	0.19	0	0	3
2009	5	—	0	2	2	3.5	40	—	100	100	0	0.22	0	0	2
2010	3	—	1	0	1	5.0	33	—	0	0	100	0.14	0	0	1
2011	4	—	2	0	2	6.0	50	—	0	0	100	0.13	0	0	2
2012	4	—	2	1	3	4.7	25	—	33	33	33	0.20	0	0	3
2013	4	—	2	0	2	3.5	50	—	0	0	0	0.17	0	1	3

*Includes limited-entry, conservation and expo permits.

Total cougar mortality for unit 19b – West Desert, Tintic-Vernon, Utah 1990–2022 (continued).

Year	Limited- entry permits*	Harvest- objective quota	Male harvest	Female harvest	Total harvest	Mean age	% permits filled	% quota filled	% females	% adult females	% ≥ 5 yrs old	Cougar treed / day	Wildlife Services harvest	Other mortality	Total harvest + mortality
2014	4	—	2	0	2	3.0	50	—	0	0	0	0.13	0	0	2
2015	4	—	1	0	1	2.0	25	—	0	0	0	0.12	0	0	1
2016	4	—	3	0	3	4.7	75	—	0	0	67	0.14	0	0	3
2017	6	—	2	1	3	2.7	50	—	33	33	0	0.11	0	0	3
2018	9	—	3	0	3	4.0	33	—	0	0	25	0.28	0	0	3
2019	12	—	1	3	4	3.0	33	—	75	50	0	0.06	0	0	4
2020	12	—	6	1	7	3.5	58	—	14	14	33	0.05	0	0	7
2021	12	—	3	3	6	5.0	33	—	50	17	25	0.16	0	0	6
2022	11	—	5	1	6	2.2	55	—	17	17	0	0.17	0	0	6
Mean	9	6	3	2	5	3.6	47	140	36	18	21	0.19	1	0	6

*Includes limited-entry, conservation and expo permits.

Total cougar mortality for unit 29 – Zion, Utah 1990–2022.

Year	Limited-entry permits*	Harvest-objective quota	Male harvest	Female harvest	Total harvest	Mean age	% permits filled	% quota filled	% females	% adult females	% ≥ 5 yrs old	Cougar treed / day	Wildlife Services harvest	Other mortality	Total harvest + mortality
1990	25	—	5	5	10	—	40	—	50	—	—	—	0	0	10
1991	25	—	10	1	11	—	44	—	9	—	—	—	0	0	11
1992	25	—	7	1	8	—	32	—	13	—	—	—	0	0	8
1993	25	—	10	6	16	—	64	—	38	—	—	—	5	1	22
1994	33	—	2	4	6	—	18	—	67	—	—	—	1	0	7
1995	38	—	17	8	25	—	66	—	32	—	—	—	1	2	28
1996	50	—	12	9	21	3.5	42	—	43	—	—	—	3	2	26
1997	50	—	16	14	30	3.4	60	—	47	—	—	—	0	2	32
1998	50	—	15	9	24	2.9	48	—	38	—	—	0.26	0	2	26
1999	50	—	4	9	13	2.6	26	—	69	—	7	0.26	0	0	13
2000	40	—	7	6	13	3.1	33	—	46	—	15	0.18	2	1	16
2001	40	—	6	4	10	3.5	25	—	40	—	18	0.29	1	2	13
2002	15	15	9	14	23	3.4	60	93	61	—	30	0.26	5	1	29
2003	15	15	9	10	19	3.5	33	93	53	—	31	0.76	4	0	23
2004	1	28	4	14	18	2.9	—	64	78	—	8	0.05	2	0	20
2005	—	28	5	3	8	3.0	—	29	38	—	25	0.15	0	2	10
2006	—	28	10	7	17	3.1	—	61	41	—	33	0.19	0	0	17
2007	—	28	10	7	17	3.8	—	61	41	—	29	0.17	1	1	19
2008	—	28	8	8	16	3.4	—	57	50	38	13	0.26	1	0	17
2009	—	21	6	9	15	3.5	—	71	60	47	27	0.23	3	2	20
2010	—	21	8	6	14	2.8	—	67	43	14	14	0.11	1	2	17
2011	—	18	10	6	16	3.2	—	89	38	13	20	0.25	0	1	17
2012	—	—	5	8	13	2.8	—	—	62	23	0	0.17	1	0	14
2013	—	—	6	3	9	4.1	—	—	33	22	33	0.12	1	0	10

*Includes limited-entry, conservation and expo permits.

Total cougar mortality for unit 29 – Zion, Utah 1990–2022 (continued).

Year	Limited- entry permits*	Harvest- objective quota	Male harvest	Female harvest	Total harvest	Mean age	% permits filled	% quota filled	% females	% adult females	% ≥ 5 yrs old	Cougar treed / day	Wildlife Services harvest	Other mortality	Total harvest + mortality
2014	—	18	5	3	8	2.4	—	44	38	13	0	0.04	0	1	9
2015	—	20	10	7	17	2.2	—	85	41	24	6	0.14	0	2	19
2016	—	20	8	5	13	3.5	—	65	38	23	27	0.31	0	1	14
2017	—	18	12	1	13	3.6	—	72	8	8	45	0.46	0	0	13
2018	—	20	13	7	21	2.9	—	105	33	19	27	0.20	0	0	21
2019	—	23	5	11	16	3.7	—	70	69	50	17	0.00	0	0	16
2020	—	26	18	9	27	2.9	—	88	33	19	17	0.32	0	1	28
2021	—	Unlimited	14	12	26	2.7	—	—	46	27	17	0.16	2	2	30
2022	—	Unlimited	6	8	14	3.1	—	—	57	43	27	0.08	0	5	19
Mean	32	22	9	7	16	3.2	42	70	44	25	20	0.22	1	1	18

*Includes limited-entry, conservation and expo permits.