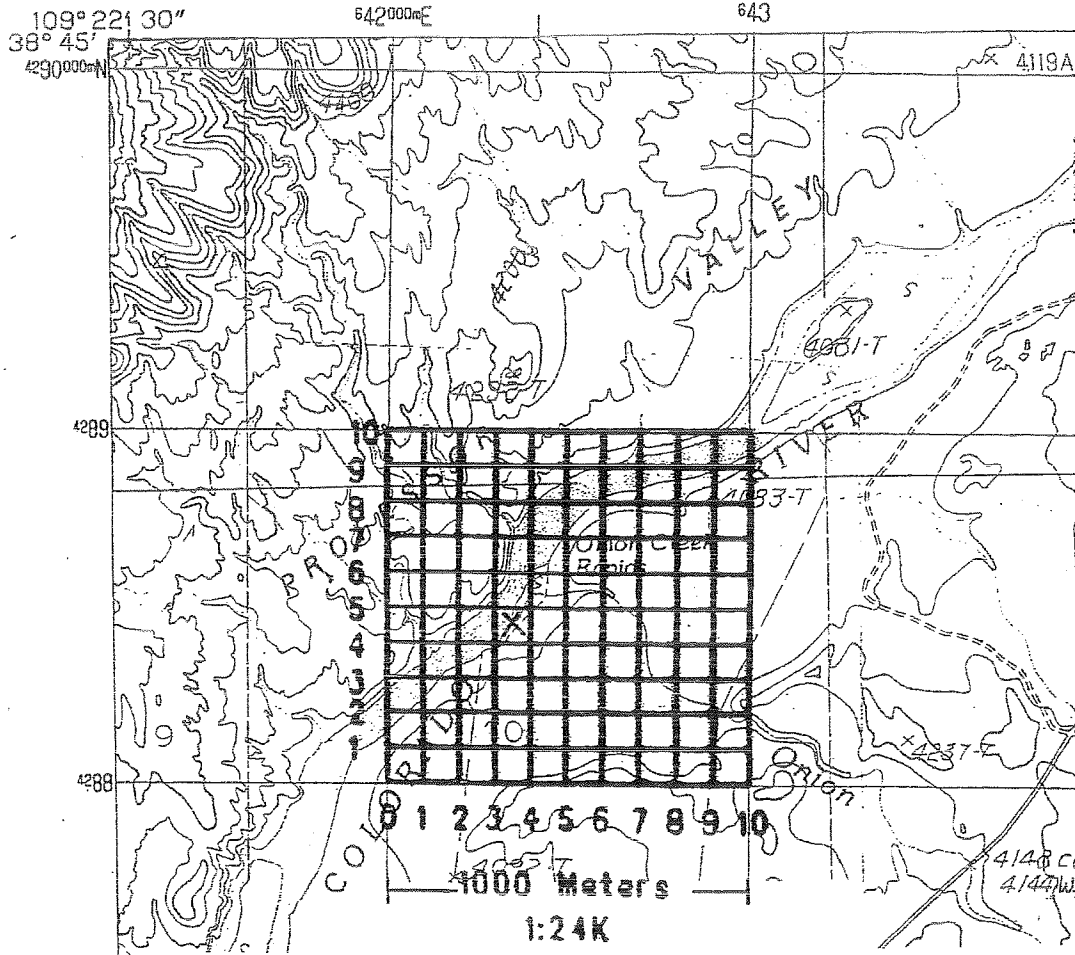


DIRECTIONS FOR COMPLETING REPORT OF ACTIVITIES

- 1) **Certificate No.** - This is the Certificate of Registration or COR number issued to you.
- 2) **Date of Activity** - This is the date on which you collected, salvaged, or banded. Please record dates in the following shorthand form: (MM/DD/YY) - 01/15/10 which equals January 15, 2010.
- 3) **Specific Location** - Location is indicated as UTM coordinates only. UTM coordinates should be to the nearest 10 meters (1:24,000 scale) or nearest 50 meters (1:100,000 scale) and in the following form: X_____E; Y_____N. The X will always be followed by 6 numbers and E (east) and the Y will always be followed by 7 numbers and N (north). See Attachment A for information for template and further instructions on determining UTM coordinates.
- 4) **County and General Location** - Record general location of activity.
- 5) **Elevation** - Record the elevation that activity occurred to the nearest 40 meters (see 1:100,000 scale map).
- 6) **Common Name/Scientific Name** - Please use the attached list of common name, Genus and species name. See Attachment B for standard common and scientific names.
- 7) **Number of Animals** - Record the number of animals collected, salvaged, or banded.
- 8) **Age** - Record either Adult, Immature/Juvenile, or Unknown.
- 9) **Sex** - Record either Male, Female, or Unknown
- 10) **Breeding Condition** - Record if the animal is in breeding condition (e.g. breeding plumage or coloration, swollen cloaca etc) as a Yes, No, or Unknown.
- 11) **Nest or Den** - Record if the animal, when collected, salvaged, or banded, was in a nest or den.
- 12) **Activity** - Record the activity that the animal was engaged in at the time located. Choose from the following list of examples:

flying	basking	climbing	incubating	copulating/mating	fighting	carrying food
crawling	swimming	sleeping	brooding	courting	nest/den building	dead
walking	perched/sitting	foraging	nursing	feeding young	reproducing (birth)	

- 13) **Habitat Index** - Record the most appropriate 4-letter habitat code from the list of habitat types (arranged hierarchically). See Attachment C for habitat index codes. Please identify the habitat type to the most specific level possible (the most specific or lowest level in most cases is species based). If you cannot identify a habitat by its species or if the habitat is a mixture of dominant species, identify it to a more general (higher) level. For example, if you were in an area dominated by Utah juniper, you would record UTJU in the Habitat Index column. If you did not know it was a Utah juniper, but knew that it was a juniper, you would record JUNI. If the area was dominated by both junipers and pinyon pines, record PIJU as the Habitat Index.
- 14) **Disposition of Specimen** - Record the final disposition of the specimen (released, buried, given to UDWR, donated to a museum or University etc. If it was placed in a personal collection or a museum, record all numbers associated with the specimen, the name and address of the repository and the individual who received the specimen.
- 15) **Remarks** - Please record all other information you feel is pertinent. This includes band numbers, radio frequencies, diagnostic counts, marker colors etc.



In this example (from a 1:24,000 scale map), the confluence of Onion Creek and the Colorado River (marked with an X) has UTM coordinates of X 642350 E and Y 4289460 N

These numbers are from the map margins

X 642 | 350 E

Y 4288 | 460 N

These numbers are read from the template (the last two numbers are estimated to the nearest 10 meters.

Read the template starting from the lower left corner.
 Read to the right for the last 3 digits of the X (E) coordinate.
 Read up for the last 3 digits of the Y (N) coordinate.

On 1:100,000 scale maps, only the first 2 X (E) and the first 3 Y (N) coordinates are given. This makes accurate estimates of the last 2 digits very difficult. At the 1:100,000 scale estimates to the nearest 100 meters are acceptable.

At the 1:24,000 scale, estimate to the nearest 10 meters.
 At the 1:100,000 scale, estimate to the nearest 100 meters

STATE OF UTAH
DIVISION OF WILDLIFE RESOURCES

Certificate No. _____

ANNUAL REPORT OF ACTIVITIES FOR COLLECTION, SALVAGE, OR BANDING

The following information is required in connection with your Certification of Registration. All blanks must be completed and this information must be filed with the Utah Division of Wildlife Resources (UDWR) on or before 12/31 of the permit year. Applications for renewal will be denied unless this report has been submitted. This information will aid UDWR in determining the current distribution and status of Utah/s wildlife species.

Date of Activity	Specific Location (use UTM, zone 12, NAD 83)	Elevation (Meters)	County and General Location	Common Name/ Scientific Name (use standard list)	No. of Animals	Age (See Back)	Sex (See Back)	Breeding Condition (Yes, No, Unkn)	Nest or Den (Yes/No)	Activity (See Back)	Habitat Index (See List)	Disposition of Specimen (See Back)
	X_____ (E) Y_____ (N)											
	X_____ (E) Y_____ (N)											
	X_____ (E) Y_____ (N)											
	X_____ (E) Y_____ (N)											
	X_____ (E) Y_____ (N)											
	X_____ (E) Y_____ (N)											

REGISTRANT'S NAME _____
(Print) Last First MI

REMARKS:

REPORT DATE _____ SIGNATURE _____

Date of Activity	Specific Location (use UTM, zone 12, NAD 83)	Elevation (Meters)	County and General Location	Common Name/ Scientific Name (use standard list)	No. of Animals	Age (See Back)	Sex (See Back)	Breeding Condition (Yes, No, Unkn)	Nest or Den (Yes/No)	Activity (See Back)	Habitat Index (See List)	Disposition of Specimen (See Back)
	X_____ (E) Y_____ (N)											
	X_____ (E) Y_____ (N)											
	X_____ (E) Y_____ (N)											
	X_____ (E) Y_____ (N)											
	X_____ (E) Y_____ (N)											
	X_____ (E) Y_____ (N)											
	X_____ (E) Y_____ (N)											
	X_____ (E) Y_____ (N)											
	X_____ (E) Y_____ (N)											

ATTACHMENT B

Scientific and Common Names of Utah Animals

Scientific Name

Common Name

OSTEICHTHYES (FISH)

Dorosoma petenense	THREADFIN SHAD
Oncorhynchus nerka	SOCKEYE SALMON (KOKANEE)
Oncorhynchus clarki	CUTTHROAT TROUT
Oncorhynchus clarki henshawi	LAHONTAN CUTTHROAT TROUT
Oncorhynchus clarki utah	BONNEVILLE CUTTHROAT TROUT
Oncorhynchus clarki pleuriticus	COLORADO RIVER CUTTHROAT TROUT
Oncorhynchus clarki bouvieri	YELLOWSTONE CUTTHROAT TROUT
Oncorhynchus mykiss	RAINBOW TROUT
Oncorhynchus mykiss aguabonita	GOLDEN TROUT
Prosopium abyssicola	BEAR LAKE WHITEFISH
Prosopium gemmifer	BONNEVILLE CISCO
Prosopium spilonotus	BONNEVILLE WHITEFISH
Prosopium williamsoni	MOUNTAIN WHITEFISH
Salmo trutta	BROWN TROUT
Salvelinus fontinalis	BROOK TROUT
Salvelinus namaycush	LAKE TROUT
Thymallus arcticus	ARCTIC GRAYLING
Esox lucius	NORTHERN PIKE
Carassius auratus	GOLDFISH
Cyprinus carpio	COMMON CARP
Gila atraria	UTAH CHUB
Gila copei	LEATHERSIDE CHUB
Gila cypha	HUMPBACK CHUB
Gila elegans	BONYTAIL
Gila robusta	ROUNDTAIL CHUB
Gila seminuda	VIRGIN RIVER CHUB
Hybognathus hankinsoni	BRASSY MINNOW
Hybognathus placitus	PLAINS MINNOW
Iotichthys phlegethontis	LEAST CHUB
Lepidomeda mollispinis	VIRGIN SPINEDACE
Notemigonus crysoleucas	GOLDEN SHINER
Notropis hudsonius	SPOTTAIL SHINER
Notropis stramineus	SAND SHINER
Pimephales promelas	FATHEAD MINNOW
Plagopterus argentissimus	WOUNDFIN
Ptychocheilus lucius	COLORADO PIKEMINNOW
Rhinichthys cataractae	LONGNOSE DACE
Rhinichthys osculus	SPECKLED DACE
Richardsonius balteatus	REDSIDE SHINER
Semotilus atromaculatus	CREEK CHUB
Cyprinella lutrensis	RED SHINER
Catostomus ardens	UTAH SUCKER
Catostomus clarki	DESERT SUCKER
Catostomus commersoni	WHITE SUCKER
Catostomus discobolus	BLUEHEAD SUCKER
Catostomus latipinnis	FLANNELMOUTH SUCKER
Catostomus platyrhynchus	MOUNTAIN SUCKER
Chasmistes liorus	JUNE SUCKER
Xyrauchen texanus	RAZORBACK SUCKER
Ictalurus punctatus	CHANNEL CATFISH
Ameiurus melas	BLACK BULLHEAD
Ameiurus natalis	YELLOW BULLHEAD
Fundulus sciadicus	PLAINS TOPMINNOW
Fundulus zebrinus	PLAINS KILLIFISH
Lucania parva	RAINWATER KILLIFISH
Gambusia affinis	WESTERN MOSQUITOFISH
Morone chrysops	WHITE BASS
Morone saxatilis	STRIPED BASS
Archoplites interruptus	SACRAMENTO PERCH
Lepomis cyanellus	GREEN SUNFISH

Lepomis macrochirus
Micropterus dolomieu
Micropterus salmoides
Pomoxis annularis
Pomoxis nigromaculatus
Etheostoma exile
Etheostoma nigrum
Perca flavescens
Stizostedion vitreum
Cichlasoma managuense
Cottus bairdi
Cottus beldingi
Cottus echinatus
Cottus extensus

AMPHIBIA (AMPHIBIANS)

Ambystoma tigrinum
Bufo boreas
Bufo cognatus
Bufo microscaphus
Bufo punctatus
Bufo woodhousii
Hyla arenicolor
Pseudacris regilla
Pseudacris maculata
Spea bombifrons
Spea intermontana
Spea multiplicata
Rana catesbeiana
Rana clamitans
Rana onca
Rana pipiens
Rana pretiosa
Rana yavapaiensis

REPTILIA (REPTILES)

Chelydra serpentina
Chrysemys picta
Gopherus agassizii
Apalone spinifera
Elgaria coerulea
Coleonyx variegatus
Heloderma suspectum
Callisaurus draconoides
Crotaphytus bicinctores
Crotaphytus collaris
Dipsosaurus dorsalis
Gambelia wislizenii
Holbrookia maculata
Phrynosoma douglasi
Phrynosoma platyrhinos
Sauromalus obesus
Sceloporus graciosus
Sceloporus magister
Sceloporus occidentalis
Sceloporus undulatus
Urosaurus graciosus
Urosaurus ornatus
Uta stansburiana
Eumeces multivirgatus
Eumeces skiltonianus
Cnemidophorus tigris
Cnemidophorus velox
Xantusia vigilis
Charina bottae
Arizona elegans
Coluber constrictor
Diadophis punctatus
Elaphe guttata
Hypsiglena torquata
Lampropeltis getula
Lampropeltis pyromelana

BLUEGILL
SMALLMOUTH BASS
LARGEMOUTH BASS
WHITE CRAPPIE
BLACK CRAPPIE
IOWA DARTER
JOHNNY DARTER
YELLOW PERCH
WALLEYE
JAGUAR GUAPOTE
MOTTLED SCULPIN
PAIUTE SCULPIN
UTAH LAKE SCULPIN
BEAR LAKE SCULPIN

TIGER SALAMANDER
WESTERN TOAD (BOREAL TOAD)
GREAT PLAINS TOAD
SOUTHWESTERN TOAD (ARIZONA TOAD)
RED-SPOTTED TOAD
WOODHOUSE'S TOAD
CANYON TREEFROG
PACIFIC CHORUS FROG
BOREAL CHORUS FROG
PLAINS SPADEFOOT
GREAT BASIN SPADEFOOT
NEW MEXICO SPADEFOOT
BULLFROG
GREEN FROG
RELICT LEOPARD FROG
NORTHERN LEOPARD FROG
SPOTTED FROG
YAVAPAI LEOPARD FROG (LOWLAND)

SNAPPING TURTLE
PAINTED TURTLE
DESERT TORTOISE
SPINY SOFTSHELL
NORTHERN ALLIGATOR LIZARD
WESTERN BANDED GECKO
GILA MONSTER
ZEBRATAIL LIZARD
MOJAVE BLACK-COLLARED LIZARD
COLLARED LIZARD
DESERT IGUANA
LONGNOSE LEOPARD LIZARD
LESSER EARLESS LIZARD
SHORT-HORNED LIZARD
DESERT HORNED LIZARD
CHUCKWALLA
SAGEBRUSH LIZARD
DESERT SPINY LIZARD
WESTERN FENCE LIZARD
PLATEAU LIZARD
BRUSH LIZARD
NORTHERN TREE LIZARD
SIDE-BLOTCHED LIZARD
MANY-LINED SKINK
WESTERN SKINK
WESTERN WHIPTAIL
PLATEAU STRIPED WHIPTAIL
DESERT NIGHT LIZARD
RUBBER BOA
GLOSSY SNAKE
RACER
RINGNECK SNAKE
CORN SNAKE
NIGHT SNAKE
COMMON KINGSSNAKE
SONORAN MOUNTAIN KINGSSNAKE

Lampropeltis triangulum
Masticophis flagellum
Masticophis taeniatus
Opheodrys vernalis
Phyllorhynchus decurtatus
Pituophis melanoleucus
Rhinocheilus lecontei
Salvadora hexalepis
Sonora semiannulata
Tantilla hobartsmithi
Thamnophis cyrtopsis
Thamnophis elegans
Thamnophis sirtalis
Trimorphodon biscutatus
Leptotyphlops humilis
Crotalus cerastes
Crotalus mitchelli
Crotalus scutulatus
Crotalus viridis

AVES (BIRDS)

Gavia stellata
Gavia immer
Gavia adamsii
Gavia pacifica
Podilymbus podiceps
Podiceps auritus
Podiceps grisegena
Podiceps nigricollis
Aechmophorus occidentalis
Aechmophorus clarkii
Pelecanus erythrorhynchos
Pelecanus occidentalis
Phalacrocorax auritus
Botaurus lentiginosus
Ixobrychus exilis
Ardea herodias
Ardea alba
Egretta thula
Egretta caerulea
Egretta tricolor
Bubulcus ibis
Butorides virescens
Nycticorax nycticorax
Plegadis chihi
Ajaja ajaja
Mycteria americana
Phoenicopterus ruber
Dendrocygna bicolor
Cygnus columbianus
Cygnus buccinator
Anser albifrons
Chen caerulescens
Chen rossii
Branta bernicla
Branta canadensis
Aix sponsa
Anas crecca
Anas rubripes
Anas platyrhynchos
Anas acuta
Anas discors
Anas cyanoptera
Anas clypeata
Anas strepera
Anas penelope
Anas americana
Aythya valisineria
Aythya americana
Aythya collaris
Aythya marila
Aythya affinis

MILK SNAKE
COACHWHIP
STRIPED WHIPSNAKE
SMOOTH GREEN SNAKE
SPOTTED LEAFNOSE SNAKE
GOPHER SNAKE
LONGNOSE SNAKE
WESTERN PATCHNOSE SNAKE
GROUND SNAKE
SOUTHWESTERN BLACKHEADED SNAKE
BLACKNECK GARTER SNAKE
WESTERN TERRESTRIAL GARTER SNAK
COMMON GARTER SNAKE
LYRE SNAKE
WESTERN BLIND SNAKE
SIDEWINDER
SPECKLED RATTLESNAKE
MOJAVE RATTLESNAKE
WESTERN RATTLESNAKE

RED-THROATED LOON
COMMON LOON
YELLOW-BILLED LOON
PACIFIC LOON
PIED-BILLED GREBE
HORNED GREBE
RED-NECKED GREBE
EARED GREBE
WESTERN GREBE
CLARK'S GREBE
AMERICAN WHITE PELICAN
BROWN PELICAN
DOUBLE-CRESTED CORMORANT
AMERICAN BITTERN
LEAST BITTERN
GREAT BLUE HERON
GREAT EGRET
SNOWY EGRET
LITTLE BLUE HERON
TRICOLORED HERON
CATTLE EGRET
GREEN HERON
BLACK-CROWNED NIGHT-HERON
WHITE-FACED IBIS
ROSEATE SPOONBILL
WOOD STORK
GREATER FLAMINGO
FULVOUS WHISTLING-DUCK
TUNDRA SWAN
TRUMPETER SWAN
GREATER WHITE-FRONTED GOOSE
SNOW GOOSE
ROSS' GOOSE
BRANT
CANADA GOOSE
WOOD DUCK
GREEN-WINGED TEAL
AMERICAN BLACK DUCK
MALLARD
NORTHERN PINTAIL
BLUE-WINGED TEAL
CINNAMON TEAL
NORTHERN SHOVELER
GADWALL
EURASIAN WIGEON
AMERICAN WIGEON
CANVASBACK
REDHEAD
RING-NECKED DUCK
GREATER SCAUP
LESSER SCAUP

Histrionicus histrionicus
Clangula hyemalis
Melanitta nigra
Melanitta perspicillata
Melanitta fusca
Bucephala clangula
Bucephala islandica
Bucephala albeola
Lophodytes cucullatus
Mergus merganser
Mergus serrator
Oxyura jamaicensis
Cathartes aura
Gymnogyps californianus
Pandion haliaetus
Elanus leucurus
Haliaeetus leucocephalus
Circus cyaneus
Accipiter striatus
Accipiter cooperii
Accipiter gentilis
Buteogallus anthracinus
Buteo lineatus
Buteo platypterus
Buteo swainsoni
Buteo albonotatus
Buteo jamaicensis
Buteo regalis
Buteo lagopus
Aquila chrysaetos
Falco sparverius
Falco columbarius
Falco peregrinus
Falco rusticolus
Falco mexicanus
Perdix perdix
Alectoris chukar
Phasianus colchicus
Dendragapus obscurus
Lagopus leucurus
Bonasa umbellus
Centrocercus urophasianus
Tympanuchus phasianellus
Meleagris gallopavo
Callipepla squamata
Callipepla gambelii
Callipepla californica
Rallus limicola
Porzana carolina
Porphyryla martinica
Gallinula chloropus
Fulica americana
Grus canadensis
Grus americana
Pluvialis squatarola
Pluvialis dominicus
Charadrius alexandrinus
Charadrius semipalmatus
Charadrius vociferus
Charadrius montanus
Himantopus mexicanus
Recurvirostra americana
Tringa melanoleuca
Tringa flavipes
Tringa solitaria
Catoptrophorus semipalmatus
Heteroscelus incanus
Actitis macularia
Bartramia longicauda
Numenius phaeopus
Numenius americanus
Limosa haemastica

HARLEQUIN DUCK
OLDSQUAW
BLACK SCOTER
SURF SCOTER
WHITE-WINGED SCOTER
COMMON GOLDENEYE
BARROW'S GOLDENEYE
BUFFLEHEAD
HOODED MERGANSER
COMMON MERGANSER
RED-BREASTED MERGANSER
RUDDY DUCK
TURKEY VULTURE
CALIFORNIA CONDOR
OSPREY
WHITE-TAILED KITE
BALD EAGLE
NORTHERN HARRIER
SHARP-SHINNED HAWK
COOPER'S HAWK
NORTHERN GOSHAWK
COMMON BLACK-HAWK
RED-SHOULDERED HAWK
BROAD-WINGED HAWK
SWAINSON'S HAWK
ZONE-TAILED HAWK
RED-TAILED HAWK
FERRUGINOUS HAWK
ROUGH-LEGGED HAWK
GOLDEN EAGLE
AMERICAN KESTREL
MERLIN
PEREGRINE FALCON
GYRFALCON
PRAIRIE FALCON
GRAY PARTRIDGE
CHUKAR
RING-NECKED PHEASANT
BLUE GROUSE
WHITE-TAILED PTARMIGAN
RUFFED GROUSE
SAGE GROUSE
SHARP-TAILED GROUSE
WILD TURKEY
SCALED QUAIL
GAMBEL'S QUAIL
CALIFORNIA QUAIL
VIRGINIA RAIL
SORA
PURPLE GALLINULE
COMMON MOORHEN
AMERICAN COOT
SANDHILL CRANE
WHOOPIING CRANE
BLACK-BELLIED PLOVER
AMERICAN GOLDEN-PLOVER
SNOWY PLOVER
SEMPALMATED PLOVER
KILLDEER
MOUNTAIN PLOVER
BLACK-NECKED STILT
AMERICAN AVOCET
GREATER YELLOWLEGS
LESSER YELLOWLEGS
SOLITARY SANDPIPER
WILLET
WANDERING TATTLER
SPOTTED SANDPIPER
UPLAND SANDPIPER
WHIMBREL
LONG-BILLED CURLEW
HUDSONIAN GODWIT

<i>Limosa fedoa</i>	MARBLED GODWIT
<i>Arenaria interpres</i>	RUDDY TURNSTONE
<i>Calidris canutus</i>	RED KNOT
<i>Calidris alba</i>	SANDERLING
<i>Calidris pusilla</i>	SEMIPALMATED SANDPIPER
<i>Calidris mauri</i>	WESTERN SANDPIPER
<i>Calidris minutilla</i>	LEAST SANDPIPER
<i>Calidris fuscicollis</i>	WHITE-RUMPED SANDPIPER
<i>Calidris bairdii</i>	BAIRD'S SANDPIPER
<i>Calidris melanotos</i>	PECTORAL SANDPIPER
<i>Calidris alpina</i>	DUNLIN
<i>Calidris ferruginea</i>	CURLEW SANDPIPER
<i>Calidris himantopus</i>	STILT SANDPIPER
<i>Limnodromus griseus</i>	SHORT-BILLED DOWITCHER
<i>Limnodromus scolopaceus</i>	LONG-BILLED DOWITCHER
<i>Gallinago gallinago</i>	COMMON SNIFE
<i>Scolopax minor</i>	AMERICAN WOODCOCK
<i>Phalaropus tricolor</i>	WILSON'S PHALAROPE
<i>Phalaropus lobatus</i>	RED-NECKED PHALAROPE
<i>Phalaropus fulicaria</i>	RED PHALAROPE
<i>Stercorarius pomarinus</i>	POMARINE JAEGER
<i>Stercorarius parasiticus</i>	PARASITIC JAEGER
<i>Stercorarius longicaudus</i>	LONG-TAILED JAEGER
<i>Larus atricilla</i>	LAUGHING GULL
<i>Larus pipixcan</i>	FRANKLIN'S GULL
<i>Larus philadelphia</i>	BONAPARTE'S GULL
<i>Larus canus</i>	MEW GULL
<i>Larus delawarensis</i>	RING-BILLED GULL
<i>Larus californicus</i>	CALIFORNIA GULL
<i>Larus argentatus</i>	HERRING GULL
<i>Larus thayeri</i>	THAYER'S GULL
<i>Larus fuscus</i>	LESSER BLACK-BACKED GULL
<i>Larus glaucescens</i>	GLAUCOUS-WINGED GULL
<i>Larus hyperboreus</i>	GLAUCOUS GULL
<i>Rissa tridactyla</i>	BLACK-LEGGED KITTIWAKE
<i>Xema sabini</i>	SABINE'S GULL
<i>Sterna caspia</i>	CASPIAN TERN
<i>Sterna hirundo</i>	COMMON TERN
<i>Sterna forsteri</i>	FORSTER'S TERN
<i>Sterna antillarum</i>	LEAST TERN
<i>Chlidonias niger</i>	BLACK TERN
<i>Synthliboramphus antiquus</i>	ANCIENT MURRELET
<i>Columba livia</i>	ROCK DOVE
<i>Columba fasciata</i>	BAND-TAILED PIGEON
<i>Streptopelia chinensis</i>	SPOTTED DOVE
<i>Zenaida asiatica</i>	WHITE-WINGED DOVE
<i>Zenaida macroura</i>	MOURNING DOVE
<i>Columbina inca</i>	INCA DOVE
<i>Columbina passerina</i>	COMMON GROUND DOVE
<i>Coccyzus erythrophthalmus</i>	BLACK-BILLED CUCKOO
<i>Coccyzus americanus</i>	YELLOW-BILLED CUCKOO
<i>Geococcyx californianus</i>	GREATER ROADRUNNER
<i>Tyto alba</i>	BARN-OWL
<i>Otus flammeolus</i>	FLAMMULATED OWL
<i>Otus kennicottii</i>	WESTERN SCREECH-OWL
<i>Bubo virginianus</i>	GREAT HORNED OWL
<i>Nyctea scandiaca</i>	SNOWY OWL
<i>Surnia ulula</i>	NORTHERN HAWK-OWL
<i>Glaucidium gnoma</i>	NORTHERN PYGMY-OWL
<i>Speotyto cunicularia</i>	BURROWING OWL
<i>Strix occidentalis</i>	SPOTTED OWL
<i>Strix nebulosa</i>	GREAT GRAY OWL
<i>Asio otus</i>	LONG-EARED OWL
<i>Asio flammeus</i>	SHORT-EARED OWL
<i>Aegolius acadicus</i>	NORTHERN SAW-WHET OWL
<i>Chordeiles acutipennis</i>	LESSER NIGHTHAWK
<i>Chordeiles minor</i>	COMMON NIGHTHAWK
<i>Phalaenoptilus nuttallii</i>	COMMON POORWILL
<i>Caprimulgus vociferus</i>	WHIP-POOR-WILL
<i>Cypseloides niger</i>	BLACK SWIFT
<i>Chaetura pelagica</i>	CHIMNEY SWIFT
<i>Chaetura vauxi</i>	VAUX'S SWIFT

<i>Aeronautes saxatalis</i>	WHITE-THROATED SWIFT
<i>Cyananthus latirostris</i>	BROAD-BILLED HUMMINGBIRD
<i>Lampornis clemenciae</i>	BLUE-THROATED HUMMINGBIRD
<i>Eugenes fulgens</i>	MAGNIFICENT HUMMINGBIRD
<i>Archilochus alexandri</i>	BLACK-CHINNED HUMMINGBIRD
<i>Calypte anna</i>	ANNA'S HUMMINGBIRD
<i>Calypte costae</i>	COSTA'S HUMMINGBIRD
<i>Stellula calliope</i>	CALLIOPE HUMMINGBIRD
<i>Selasphorus platycercus</i>	BROAD-TAILED HUMMINGBIRD
<i>Selasphorus rufus</i>	RUFIOUS HUMMINGBIRD
<i>Ceryle alcyon</i>	BELTED KINGFISHER
<i>Melanerpes lewis</i>	LEWIS' WOODPECKER
<i>Melanerpes erythrocephalus</i>	RED-HEADED WOODPECKER
<i>Melanerpes formicivorus</i>	ACORN WOODPECKER
<i>Sphyrapicus ruber</i>	RED-BREASTED SAPSUCKER
<i>Sphyrapicus thyroideus</i>	WILLIAMSON'S SAPSUCKER
<i>Sphyrapicus nuchalis</i>	RED-NAPED SAPSUCKER
<i>Picoides scalaris</i>	LADDER-BACKED WOODPECKER
<i>Picoides pubescens</i>	DOWNY WOODPECKER
<i>Picoides villosus</i>	HAIRY WOODPECKER
<i>Picoides tridactylus</i>	THREE-TOED WOODPECKER
<i>Colaptes auratus</i>	NORTHERN FLICKER
<i>Colaptes chrysoides</i>	GILDED FLICKER
<i>Dryocopus pileatus</i>	PILEATED WOODPECKER
<i>Contopus borealis</i>	OLIVE-SIDED FLYCATCHER
<i>Contopus sordidulus</i>	WESTERN WOOD-PEWEE
<i>Empidonax traillii</i>	WILLOW FLYCATCHER
<i>Empidonax traillii extimus</i>	SOUTHWESTERN WILLOW FLYCATCHER
<i>Empidonax minimus</i>	LEAST FLYCATCHER
<i>Empidonax hammondi</i>	HAMMOND'S FLYCATCHER
<i>Empidonax oberholseri</i>	DUSKY FLYCATCHER
<i>Empidonax wrightii</i>	GRAY FLYCATCHER
<i>Empidonax difficilis</i>	PACIFIC-SLOPE FLYCATCHER
<i>Empidonax occidentalis</i>	CORDILLERAN FLYCATCHER
<i>Sayornis nigricans</i>	BLACK PHOEBE
<i>Sayornis phoebe</i>	EASTERN PHOEBE
<i>Sayornis saya</i>	SAY'S PHOEBE
<i>Pyrocephalus rubinus</i>	VERMILION FLYCATCHER
<i>Myiarchus cinerascens</i>	ASH-THROATED FLYCATCHER
<i>Myiarchus crinitus</i>	GREAT CRESTED FLYCATCHER
<i>Myiarchus tyrannulus</i>	BROWN-CRESTED FLYCATCHER
<i>Tyrannus vociferans</i>	CASSIN'S KINGBIRD
<i>Tyrannus verticalis</i>	WESTERN KINGBIRD
<i>Tyrannus tyrannus</i>	EASTERN KINGBIRD
<i>Tyrannus forficatus</i>	SCISSOR-TAILED FLYCATCHER
<i>Eremophila alpestris</i>	HORNED LARK
<i>Progne subis</i>	PURPLE MARTIN
<i>Tachycineta bicolor</i>	TREE SWALLOW
<i>Tachycineta thalassina</i>	VIOLET-GREEN SWALLOW
<i>Stelgidopteryx serripennis</i>	NORTHERN ROUGH-WINGED SWALLOW
<i>Riparia riparia</i>	BANK SWALLOW
<i>Hirundo pyrrhonota</i>	CLIFF SWALLOW
<i>Hirundo rustica</i>	BARN SWALLOW
<i>Perisoreus canadensis</i>	GRAY JAY
<i>Cyanocitta stelleri</i>	STELLER'S JAY
<i>Cyanocitta cristata</i>	BLUE JAY
<i>Aphelocoma californica</i>	WESTERN SCRUB-JAY
<i>Gymnorhinus cyanocephalus</i>	PINYON JAY
<i>Nucifraga columbiana</i>	CLARK'S NUTCRACKER
<i>Pica pica</i>	BLACK-BILLED MAGPIE
<i>Corvus brachyrhynchos</i>	AMERICAN CROW
<i>Corvus corax</i>	COMMON RAVEN
<i>Parus atricapillus</i>	BLACK-CAPPED CHICKADEE
<i>Parus gambeli</i>	MOUNTAIN CHICKADEE
<i>Parus inornatus</i>	PLAIN TITMOUSE
<i>Auriparus flaviceps</i>	VERDIN
<i>Psaltriparus minimus</i>	BUSHTIT
<i>Sitta canadensis</i>	RED-BREASTED NUTHATCH
<i>Sitta carolinensis</i>	WHITE-BREASTED NUTHATCH
<i>Sitta pygmaea</i>	PYGMY NUTHATCH
<i>Certhia familiaris</i>	BROWN CREEPER
<i>Campylorhynchus brunneicapillus</i>	CACTUS WREN

Salpinctes obsoletus
Catherpes mexicanus
Thryomanes bewickii
Troglodytes aedon
Troglodytes troglodytes
Cistothorus palustris
Cinclus mexicanus
Regulus satrapa
Regulus calendula
Polioptila caerulea
Polioptila melanura
Sialia sialis
Sialia mexicana
Sialia currucoides
Myadestes townsendi
Catharus fuscescens
Catharus minimus
Catharus ustulatus
Catharus guttatus
Hylocichla mustelina
Turdus migratorius
Ixoreus naevius
Dumetella carolinensis
Mimus polyglottos
Oreoscoptes montanus
Toxostoma rufum
Toxostoma bendirei
Toxostoma crissale
Toxostoma lecontei
Anthus spinoletta
Anthus spragueii
Bombycilla garrulus
Bombycilla cedrorum
Phainopepla nitens
Lanius excubitor
Lanius ludovicianus
Sturnus vulgaris
Vireo griseus
Vireo bellii
Vireo vicinior
Vireo solitarius
Vireo flavifrons
Vireo gilvus
Vireo philadelphicus
Vireo olivaceus
Vireo plumbeus
Vermivora pinus
Vermivora peregrina
Vermivora celata
Vermivora ruficapilla
Vermivora virginiae
Vermivora luciae
Parula americana
Dendroica petechia
Dendroica pensylvanica
Dendroica magnolia
Dendroica caerulescens
Dendroica coronata
Dendroica nigrescens
Dendroica townsendi
Dendroica occidentalis
Dendroica virens
Dendroica fusca
Dendroica dominica
Dendroica graciae
Dendroica palmarum
Dendroica castanea
Dendroica striata
Mniotilta varia
Setophaga ruticilla
Seiurus aurocapillus
Seiurus noveboracensis

ROCK WREN
CANYON WREN
BEWICK'S WREN
HOUSE WREN
WINTER WREN
MARSH WREN
AMERICAN DIPPER
GOLDEN-CROWNED KINGLET
RUBY-CROWNED KINGLET
BLUE-GRAY GNATCATCHER
BLACK-TAILED GNATCATCHER
EASTERN BLUEBIRD
WESTERN BLUEBIRD
MOUNTAIN BLUEBIRD
TOWNSEND'S SOLITAIRE
VEERY
GRAY-CHEEKED THRUSH
SWAINSON'S THRUSH
HERMIT THRUSH
WOOD THRUSH
AMERICAN ROBIN
VARIED THRUSH
GRAY CATBIRD
NORTHERN MOCKINGBIRD
SAGE THRASHER
BROWN THRASHER
BENDIRE'S THRASHER
CRISSAL THRASHER
LE CONTE'S THRASHER
AMERICAN PIPIT
SPRAGUE'S PIPIT
BOHEMIAN WAXWING
CEDAR WAXWING
PHAINOPEPLA
NORTHERN SHRIKE
LOGGERHEAD SHRIKE
EUROPEAN STARLING
WHITE-EYED VIREO
BELL'S VIREO
GRAY VIREO
SOLITARY VIREO
YELLOW-THROATED VIREO
WARBLING VIREO
PHILADELPHIA VIREO
RED-EYED VIREO
PLUMBEOUS VIREO
BLUE-WINGED WARBLER
TENNESSEE WARBLER
ORANGE-CROWNED WARBLER
NASHVILLE WARBLER
VIRGINIA'S WARBLER
LUCY'S WARBLER
NORTHERN PARULA
YELLOW WARBLER
CHESTNUT-SIDED WARBLER
MAGNOLIA WARBLER
BLACK-THROATED BLUE WARBLER
YELLOW-RUMPED WARBLER
BLACK-THROATED GRAY WARBLER
TOWNSEND'S WARBLER
HERMIT WARBLER
BLACK-THROATED GREEN WARBLER
BLACKBURNIAN WARBLER
YELLOW-THROATED WARBLER
GRACE'S WARBLER
PALM WARBLER
BAY-BREASTED WARBLER
BLACKPOLL WARBLER
BLACK-AND-WHITE WARBLER
AMERICAN REDSTART
OVENBIRD
NORTHERN WATERTHRUSH

Oporornis formosus	KENTUCKY WARBLER
Oporornis agilis	CONNECTICUT WARBLER
Oporornis tolmiei	MACGILLIVRAY'S WARBLER
Geothlypis trichas	COMMON YELLOWTHROAT
Wilsonia citrina	HOODED WARBLER
Wilsonia pusilla	WILSON'S WARBLER
Wilsonia canadensis	CANADA WARBLER
Myioborus pictus	PAINTED REDSTART
Icteria virens	YELLOW-BREASTED CHAT
Piranga flava	HEPATIC TANAGER
Piranga rubra	SUMMER TANAGER
Piranga olivacea	SCARLET TANAGER
Piranga ludoviciana	WESTERN TANAGER
Cardinalis cardinalis	NORTHERN CARDINAL
Pheucticus ludovicianus	ROSE-BREASTED GROSBEAK
Pheucticus melanocephalus	BLACK-HEADED GROSBEAK
Guiraca caerulea	BLUE GROSBEAK
Passerina amoena	LAZULI BUNTING
Passerina cyanea	INDIGO BUNTING
Spiza americana	DICKCISSEL
Pipilo chlorurus	GREEN-TAILED TOWHEE
Pipilo aberti	ABERT'S TOWHEE
Pipilo maculatus	SPOTTED TOWHEE
Aimophila cassinii	CASSIN'S SPARROW
Aimophila ruficeps	RUFIOUS-CROWNED SPARROW
Spizella arborea	AMERICAN TREE SPARROW
Spizella passerina	CHIPPING SPARROW
Spizella pallida	CLAY-COLORED SPARROW
Spizella breweri	BREWER'S SPARROW
Spizella atrogularis	BLACK-CHINNED SPARROW
Poocetes gramineus	VESPER SPARROW
Chondestes grammacus	LARK SPARROW
Amphispiza bilineata	BLACK-THROATED SPARROW
Amphispiza belli	SAGE SPARROW
Calamospiza melanocorys	LARK BUNTING
Passerculus sandwichensis	SAVANNAH SPARROW
Ammodramus bairdii	BAIRD'S SPARROW
Ammodramus savannarum	GRASSHOPPER SPARROW
Ammodramus leconteii	LE CONTE'S SPARROW
Passerella iliaca	FOX SPARROW
Melospiza melodia	SONG SPARROW
Melospiza lincolni	LINCOLN'S SPARROW
Melospiza georgiana	SWAMP SPARROW
Zonotrichia albicollis	WHITE-THROATED SPARROW
Zonotrichia atricapilla	GOLDEN-CROWNED SPARROW
Zonotrichia leucophrys	WHITE-CROWNED SPARROW
Zonotrichia querula	HARRIS' SPARROW
Junco hyemalis	DARK-EYED JUNCO
Calcarius mccownii	MCCOWN'S LONGSPUR
Calcarius lapponicus	LAPLAND LONGSPUR
Calcarius ornatus	CHESTNUT-COLLARED LONGSPUR
Plectrophenax nivalis	SNOW BUNTING
Dolichonyx oryzivorus	BOBOLINK
Agelaius phoeniceus	RED-WINGED BLACKBIRD
Sturnella neglecta	WESTERN MEADOWLARK
Xanthocephalus xanthocephalus	YELLOW-HEADED BLACKBIRD
Euphagus carolinus	RUSTY BLACKBIRD
Euphagus cyanocephalus	BREWER'S BLACKBIRD
Quiscalus mexicanus	GREAT-TAILED GRACKLE
Quiscalus quiscula	COMMON GRACKLE
Molothrus aeneus	BRONZED COWBIRD
Molothrus ater	BROWN-HEADED COWBIRD
Icterus spurius	ORCHARD ORIOLE
Icterus cucullatus	HOODED ORIOLE
Icterus galbula	BALTIMORE ORIOLE
Icterus parisorum	SCOTT'S ORIOLE
Icterus bullockii	BULLOCK'S ORIOLE
Fringilla montifringilla	BRAMBLING
Leucosticte atrata	BLACK ROSY-FINCH
Leucosticte tephrocotis	GRAY-CROWNED ROSY-FINCH
Pinicola enucleator	PINE GROSBEAK
Carpodacus purpureus	PURPLE FINCH

Carpodacus cassinii
Carpodacus mexicanus
Loxia curvirostra
Loxia leucoptera
Carduelis flammea
Carduelis pinus
Carduelis psaltria
Carduelis lawrencei
Carduelis tristis
Coccothraustes vespertinus
Passer domesticus

MAMMALIA (MAMMALS)

Didelphis virginiana
Sorex cinereus
Sorex preblei
Sorex vagrans
Sorex monticolus
Sorex nanus
Sorex palustris
Sorex merriami
Notiosorex crawfordi
Macrotus californicus
Myotis lucifugus
Myotis yumanensis
Myotis evotis
Myotis thysanodes
Myotis volans
Myotis californicus
Myotis ciliolabrum
Lasionycteris noctivagans
Pipistrellus hesperus
Eptesicus fuscus
Lasiurus cinereus
Lasiurus blossevillii
Euderma maculatum
Corynorhinus townsendii
Idionycteris phyllotis
Antrozous pallidus
Tadarida brasiliensis
Eumops perotis
Nyctinomops macrotis
Ochotona princeps
Ochotona princeps barnesi
Ochotona princeps cinnamomea
Ochotona princeps clamosa
Ochotona princeps lasalensis
Ochotona princeps moorei
Ochotona princeps wasatchensis
Sylvilagus nuttallii
Sylvilagus audubonii
Lepus americanus
Lepus townsendii
Lepus californicus
Brachylagus idahoensis
Tamias minimus
Tamias amoenus
Tamias dorsalis
Tamias umbrinus
Tamias umbrinus sedulus
Tamias rufus
Marmota flaviventris
Ammospermophilus leucurus
Spermophilus townsendii
Spermophilus armatus
Spermophilus beldingi
Spermophilus tridecemlineatus
Spermophilus pilosoma
Spermophilus variegatus
Spermophilus lateralis
Spermophilus elegans
Cynomys leucurus

CASSIN'S FINCH
HOUSE FINCH
RED CROSSBILL
WHITE-WINGED CROSSBILL
COMMON REDPOLL
PINE SISKIN
LESSER GOLDFINCH
LAWRENCE'S GOLDFINCH
AMERICAN GOLDFINCH
EVENING GROSBEAK
HOUSE SPARROW

VIRGINIA OPOSSUM
CINEREOUS OR MASKED SHREW
PREBLE'S SHREW
VAGRANT SHREW
DUSKY OR MONTANE SHREW
DWARF SHREW
WATER SHREW
MERRIAM'S SHREW
DESERT SHREW
CALIFORNIA LEAF-NOSED BAT
LITTLE BROWN MYOTIS
YUMA MYOTIS
LONG-EARED MYOTIS
FRINGED MYOTIS
LONG-LEGGED MYOTIS
CALIFORNIA MYOTIS
WESTERN SMALL-FOOTED MYOTIS
SILVER-HAIRED BAT
WESTERN PIPISTRELLE
BIG BROWN BAT
HOARY BAT
WESTERN RED BAT
SPOTTED BAT
TOWNSEND'S BIG-EARED BAT
ALLEN'S BIG-EARED BAT
PALLID BAT
BRAZILIAN FREE-TAILED BAT
WESTERN MASTIFF BAT
BIG FREE-TAILED BAT
AMERICAN PIKA
BARNES' PIKA
CINNAMON PIKA
COPENHAGEN BASIN PIKA
LASAL PIKA
HELIOTROPE PIKA
WASATCH PIKA
MOUNTAIN COTTONTAIL
DESERT COTTONTAIL
SNOWSHOE HARE
WHITE-TAILED JACKRABBIT
BLACK-TAILED JACKRABBIT
PYGMY RABBIT
LEAST CHIPMUNK
YELLOW-PINE CHIPMUNK
CLIFF CHIPMUNK
UINTA CHIPMUNK
MOUNT ELLEN CHIPMUNK
HOPI CHIPMUNK
YELLOW-BELLIED MARMOT
WHITE-TAILED ANTELOPE SQUIRREL
TOWNSEND'S GROUND SQUIRREL
UINTA GROUND SQUIRREL
BELDING'S GROUND SQUIRREL
THIRTEEN-LINED GROUND SQUIRREL
SPOTTED GROUND SQUIRREL
ROCK SQUIRREL
GOLDEN-MANTLED GROUND SQUIRREL
WYOMING GROUND SQUIRREL
WHITE-TAILED PRAIRIE DOG

<i>Cynomys parvidens</i>	UTAH PRAIRIE DOG
<i>Cynomys gunnisoni</i>	GUNNISON'S PRAIRIE DOG
<i>Sciurus aberti</i>	ABERT'S SQUIRREL
<i>Tamiasciurus hudsonicus</i>	RED SQUIRREL
<i>Glaucomys sabrinus</i>	NORTHERN FLYING SQUIRREL
<i>Thomomys bottae</i>	BOTTA'S POCKET GOPHER
<i>Thomomys bottae minimus</i>	STANSBURY ISLAND POCKET GOPHER
<i>Thomomys bottae nesophilus</i>	ANTELOPE ISLAND POCKET GOPHER
<i>Thomomys bottae bonnevillei</i>	BONNEVILLE POCKET GOPHER
<i>Thomomys bottae convexus</i>	CLEAR LAKE POCKET GOPHER
<i>Thomomys bottae dissimilis</i>	MOUNT ELLEN POCKET GOPHER
<i>Thomomys bottae powelli</i>	SALT GULCH POCKET GOPHER
<i>Thomomys bottae robustus</i>	SKULL VALLEY POCKET GOPHER
<i>Thomomys bottae sevieri</i>	SWASEY SPRING POCKET GOPHER
<i>Thomomys talpoides</i>	NORTHERN POCKET GOPHER
<i>Thomomys idahoensis</i>	IDAHO POCKET GOPHER
<i>Perognathus fasciatus</i>	OLIVE-BACKED POCKET MOUSE
<i>Perognathus flavescens</i>	PLAINS POCKET MOUSE
<i>Perognathus flavus</i>	SILKY POCKET MOUSE
<i>Perognathus longimembris</i>	LITTLE POCKET MOUSE
<i>Perognathus parvus</i>	GREAT BASIN POCKET MOUSE
<i>Microdipodops megacephalus</i>	DARK KANGAROO MOUSE
<i>Dipodomys ordii</i>	ORD'S KANGAROO RAT
<i>Dipodomys ordii cineraceus</i>	DOLPHIN ISLAND AWL-TOOTHED KANGAROO RAT
<i>Dipodomys microps</i>	CHISEL-TOOTHED KANGAROO RAT
<i>Dipodomys microps russeolus</i>	DOLPHIN ISLAND CHISEL-TOOTHED KANGAROO RAT
<i>Dipodomys microps alfredi</i>	GUNNISON ISLAND KANGAROO RAT
<i>Dipodomys deserti</i>	DESERT KANGAROO RAT
<i>Dipodomys merriami</i>	MERRIAM'S KANGAROO RAT
<i>Chaetodipus formosus</i>	LONG-TAILED POCKET MOUSE
<i>Chaetodipus intermedius</i>	ROCK POCKET MOUSE
<i>Chaetodipus penicillatus</i>	DESERT POCKET MOUSE
<i>Castor canadensis</i>	AMERICAN BEAVER
<i>Reithrodontomys megalotis</i>	WESTERN HARVEST MOUSE
<i>Reithrodontomys megalotis ravus</i>	STANSBURY ISLAND HARVEST MOUSE
<i>Peromyscus eremicus</i>	CACTUS MOUSE
<i>Peromyscus maniculatus</i>	DEER MOUSE
<i>Peromyscus crinitus</i>	CANYON MOUSE
<i>Peromyscus boylii</i>	BRUSH MOUSE
<i>Peromyscus truei</i>	PINON MOUSE
<i>Peromyscus nasutus</i>	NORTHERN ROCK MOUSE
<i>Onychomys leucogaster</i>	NORTHERN GRASSHOPPER MOUSE
<i>Onychomys torridus</i>	SOUTHERN GRASSHOPPER MOUSE
<i>Neotoma albigula</i>	WHITE-THROATED WOODRAT
<i>Neotoma lepida</i>	DESERT WOODRAT
<i>Neotoma devia</i>	ARIZONA WOODRAT
<i>Neotoma stephensi</i>	STEPHENS' WOODRAT
<i>Neotoma mexicana</i>	MEXICAN WOODRAT
<i>Neotoma cinerea</i>	BUSHY-TAILED WOODRAT
<i>Clethrionomys gapperi</i>	SOUTHERN RED-BACKED VOLE
<i>Phenacomys intermedius</i>	HEATHER VOLE
<i>Microtus pennsylvanicus</i>	MEADOW VOLE
<i>Microtus montanus</i>	MONTANE VOLE
<i>Microtus montanus rivularis</i>	VIRGIN RIVER MONTANE VOLE
<i>Microtus longicaudus</i>	LONG-TAILED VOLE
<i>Microtus mexicanus</i>	MEXICAN VOLE
<i>Microtus richardsoni</i>	WATER VOLE
<i>Lemmiscus curtatus</i>	SAGEBRUSH VOLE
<i>Ondatra zibethicus</i>	MUSKRAT
<i>Rattus rattus</i>	BLACK RAT
<i>Rattus norvegicus</i>	NORWAY RAT
<i>Mus musculus</i>	HOUSE MOUSE
<i>Zapus princeps</i>	WESTERN JUMPING MOUSE
<i>Erethizon dorsatum</i>	COMMON PORCUPINE
<i>Canis latrans</i>	COYOTE
<i>Canis lupus</i>	GRAY WOLF
<i>Vulpes vulpes</i>	RED FOX
<i>Vulpes velox</i>	SWIFT (KIT) FOX
<i>Urocyon cinereoargenteus</i>	COMMON GRAY FOX
<i>Ursus americanus</i>	BLACK BEAR

Ursus arctos
Bassariscus astutus
Procyon lotor
Martes americana
Martes pennanti
Mustela erminea
Mustela frenata
Mustela nigripes
Mustela vison
Gulo gulo
Taxidea taxus
Spilogale gracilis
Mephitis mephitis
Lutra canadensis
Felis concolor
Lynx lynx
Lynx rufus
Cervus elaphus
Odocoileus hemionus
Odocoileus virginianus
Alces alces
Antilocapra americana
Bison bison
Oreamnos americanus
Ovis canadensis
Ovis canadensis nelsoni
Equus caballus
Equus asinus

BROWN (GRIZZLY) BEAR
RINGTAIL
COMMON RACCOON
AMERICAN MARTEN
FISHER
ERMINE
LONG-TAILED WEASEL
BLACK-FOOTED FERRET
MINK
WOLVERINE
AMERICAN BADGER
WESTERN SPOTTED SKUNK
STRIPED SKUNK
NORTHERN RIVER OTTER
MOUNTAIN LION
LYNX
BOBCAT
RED DEER (WAPITI OR ELK)
MULE DEER
WHITE-TAILED DEER
MOOSE
PRONGHORN
AMERICAN BISON
MOUNTAIN GOAT
MOUNTAIN SHEEP
DESERT BIGHORN SHEEP
(FERAL) HORSE
(FERAL) ASS

ATTACHMENT C

UTAH HABITAT TYPES

TYPE	CODE	TYPE	COD
I. Forested			
A. Pinyon/Juniper	PIJU*		
1. Juniper	JUNI		
a. Utah Juniper	UTJU		
b. Rocky Mountain Juniper	RMJU		
c. Common Juniper	COJU		
2. Pinyon	PINY		
a. Pinyon Pine	PIPI		
b. Silverleaf Pinyon	SIPI		
B. Pinyon/Juniper Mix (PIJU with grass)	PJMX*		
C. Spruce/Fir	SPFI*		
1. Fir	FIR		
a. Mountain Fir	MOFI*		
1) Douglas Fir	DOFI		
2) White Fir	WHFI		
b. Alpine Fir	ALFI		
2. Spruce	SPRU		
a. Engelmann Spruce	ENSP		
b. Blue Spruce	BLSP		
D. Pine	PINE		
1. Ponderosa Pine	POPI*		
2. Limber Pine	LIPI		
3. Lodgepole Pine	LOPI*		
4. Bristlecone Pine	BRPI		
E. Aspen	ASPE*		
F. Mixed Conifer	MXCO*		
G. Mixed Forest (Conifer and deciduous mix)	MXFO*		
II. Scrub or Mountain Brush			
A. Mountain Shrub	MOSH*		
1. Scrub Oak	SCOA*		
a. Gambel's Oak	GAOA		
b. Canyon Live-Oak	CLOA		
2. Maple (excluding BOEL)	MAPL*		
a. Bigtooth Maple	BIMA		
b. Rocky Mountain Maple	RMMA		
3. Cliffrose	CLRO*		
4. Bitterbrush	BITT*		
5. Mountain Mahogany	MOMA*		
6. Serviceberry	SERV		
7. Squawbush	SQUA		
8. Ceanothus	CEAN*		
9. Choke cherry	CHCH*		
III. Herbs - Shrubs			
A. Desert Shrub	DESH*		
1. Sagebrush	SAGE*		
2. Sage Mix (Sagebrush mixed with grass)	SAMX*		
3. Blackbrush	BLAC*		
4. Blackbrush Mix (BLAC w/PIJU or grass)	BLMX*		
5. Creosotebush	CREO*		
6. Bursage	BURS		
B. Salt Desert Shrub	SDSH*		
1. Greasewood	GREA		
2. Shadscale	SHAD		
3. Mat-atrilex	MAAT		
4. Castle Valley Clover	CVCL		
5. Rabbitbrush	RABB		
6. Russian Thistle	RUTH		
7. Horsebrush	HORS		
8. Picklewood	PICK		
9. Halogeton	HALO		
Winterfat	WINT		
11. Mormon Tea	MOTE		
C. Salt Des. Shrub Mix (SDSH w/ grass, SAGE, BLAC)	SDMX*		
D. Other Shrub or forb	OTSH		
1. Snakeweed	SNAK		
2. Prickly Pear	PRPE		
3. Buffaloberry	BUFF		
4. Singleleaf Ash	SIAS		
5. Fremont Mahonia	FRMA		
6. Joshua Tree	JOTR		
III. Herbs - Shrubs (cont.)			
E. Mountain Meadow (grassy clearing in forest)	MEME*		
1. Wet Meadow	WEME*		
2. Dry Meadow	DRME*		
F. Mountain Forb (herbaceous opening in forest)	MOF*		
G. Alpine Tundra (above treeline)	ALTU*		
IV. Grasses - Sedges			
A. Grass	GRAS*		
1. Cheatgrass	CHEA		
2. Indian Ricegrass	INRI		
3. Dropseed	DROP		
4. Saltgrass	SALT		
5. Wheatgrass (Except CRWH)	WHEA		
6. Galleta	GALL		
7. Needlegrass	NEED		
8. Bluegrass	BLUE		
9. Grama	GRAM		
10. Three Awn	THAW		
11. Foxtail	FOXT		
12. Bromes	BROM		
13. Trisetum	TRIS		
14. Fescue	FESC		
15. Reedgrass	REED		
16. Timothy	TIMO		
17. Crested Wheat	CRWH		
B. Grass Mix (w/SAGE, SDSH, BLAC, PIJU)	GRMX*		
C. Yucca	YUCC		
D. Sedges	SEDG*		
V. River Bottom or Riparian			
A. Riparian	RIPA*		
1. Cottonwood	COTT		
a. Fremont Cottonwood	FRCO		
b. Narrowleaf Cottonwood	NACO		
2. Willow	WILL		
3. Tamerisk	TAME		
4. Russian Olive	RUOL		
5. Box Elder	BOEL		
6. Sand Bar (no vegetation)	SABA		
VI. Aquatic Areas			
A. Wetland (other than RIPA)	WETL*		
B. Hanging Garden	HAGA		
C. Open Water	WATR*		
VII. Barren Areas			
A. Rocky Outcrops	ROCK		
B. Cliffs	CLIF		
C. Sand Dunes	SAND		
D. Alkali Flats	ALKI		
E. Caves	CAVE		
F. Talus Slopes	TALU		
VIII. Other			
A. Urban (1-2)	URBN*		
1. Residential Areas	RESI		
2. Commercial Areas	COMM		
B. Agricultural	AGRI*		
1. Cropland	CROP		
2. Pasture	PAST		
3. Hedgerow/Shelterbelt	HEDG*		
C. Other (explain in remarks)	OTHR		

IDENTIFY HABITATS TO THE LOWEST HIERARCHICAL LEVEL POSSIBLE (SPECIES IS THE LOWEST LEVEL). SOME HABITATS MAY BE BETTER REPRESENTED BY HIGHER LEVEL DESIGNATIONS (E.G., SPRUCE/FIR). USE THE 4-LETTER CODE TO IDENTIFY THE HABITAT DESIGNATION.			
* habitat categories currently used in GIS/GAP Analysis.			