

# UTAH FURBEARER ANNUAL REPORT 2015-16



Publication No. 16-17



# UTAH FURBEARER ANNUAL REPORT 2015–16

Prepared by:

**Heather H. Bernales**  
Biometrician

and

**Leslie McFarlane**  
Mammals Program Coordinator

Publication No. 16-17

Annual Performance Report for Federal Aid Project W-65-M, segment 64

State of Utah  
Department of Natural Resources  
DIVISION OF WILDLIFE RESOURCES

**Gregory Sheehan**  
Director

## TABLE OF CONTENTS

Definitions.....	1
Introduction.....	2
Methods.....	2
Results.....	3
Harvest by species.....	11
Badger.....	12
Beaver.....	15
Bobcat.....	18
Coyote.....	28
Gray fox.....	32
Kit fox.....	35
Marten.....	37
Mink.....	40
Muskrat.....	43
Raccoon.....	46
Red fox.....	49
Ringtail.....	53
Spotted skunk.....	55
Striped skunk.....	57
Weasel.....	60
Appendix: Utah furbearer management ecoregions.....	62

## DEFINITIONS

**Incidental harvest:** Furbearers harvested in traps that were intended for a different furbearer species.

**Trap year:** Time frame corresponding to the 2015–16 furbearer seasons, as outlined in the 2015–16 Utah Furbearer Guidebook.

**Trappers afield:** Number of furbearer license holders who trapped furbearers during a particular trap year. License holders who took furbearers by means other than trapping, including shooting or with the aid of dogs, are included in this figure except for bobcat.

**Total harvest:** Number of furbearers of a particular species taken by means of trapping and hunting by furbearer license holders. This figure does not include harvest of unprotected wildlife, such as coyote, muskrat, red fox, raccoon, or striped skunk, taken by persons who did not purchase a furbearer license, nor does it include harvest of furbearers taken for creating a nuisance or causing damage.

**Total set-days:** Number of traps set during the furbearer season for the trapping of a particular species, multiplied by the number of days these traps were in the field. This figure pertains only to trapping, and does not include days afield by furbearer hunters or pursuers.

**Pelt price:** Average price paid for pelts of a specific furbearer species harvested in Utah, obtained mainly from a summary of the prices bid at the Utah Trappers Association fur auction, as well as prices from a survey of registered furdealers buying pelts harvested in Utah.

**Wildlife Services harvest (coyote only):** Number of coyotes taken by USDA-APHIS Wildlife Services in a particular year. Prior to 2006–07, Wildlife Services yearly harvest summaries applied to their fiscal year, which begins October 1 and ends September 30, although most harvest takes place during spring. Beginning in 2006–07, Wildlife Services harvest is reported for the period July 1 to June 30 of the following year.

## **INTRODUCTION**

The furbearer harvest report presents furbearer harvest and trapper/hunter effort trends across the state of Utah, based on data collected from furbearer trappers and hunters. This report represents the furbearer portion of the Annual Performance Report for Federal Aid Project W-65-M, segment 64, grant agreement period July 1, 2015 through June 30, 2016. This Federal Aid project covers the 2015–16 trapping seasons. Additionally this report presents statewide trends since the early 1980s and population trend indicators for bobcats as well as the estimated economic value of Utah’s furbearer harvest each year. Furbearer harvest and trapper/hunter effort may have been more driven by pelt price than by availability, so annual fur harvest should not be used as the sole means to assess/project population sizes.

Furbearers included badger, beaver, bobcat, gray fox, kit fox, mink, marten, ringtail, spotted skunk, and weasel. A furbearer license was required to harvest any of these species, and additional permits were required to harvest bobcats and martens. There were no bag limits for furbearers, except bobcats. Each bobcat permit allowed a person to harvest one bobcat, and a single person could obtain up to 6 bobcat permits in 2015–16. Sales of bobcat permits were not capped. Season dates for badger, gray fox, kit fox, marten, ringtail, spotted skunk, and weasel were September 26, 2015 through February 14, 2016. Bobcat season was November 18, 2015 through February 14, 2016. Season dates for beaver and mink were September 26, 2015 through April 6, 2016.

Coyote, muskrat, red fox, raccoon, and striped skunk were not under the jurisdiction of the Division, and/or were unprotected. Those species could be taken year round without a license; therefore, results presented in this report do not include harvest by persons who did not purchase a furbearer license. It was prohibited to take black-footed ferret, fisher, lynx, river otter, wolf, and wolverine.

## **METHODS**

Furbearer harvest and effort information was obtained from a telephone/web mixed-mode survey of a statistically-valid random sample of furbearer license holders. The accuracy of that survey was dependent upon the following assumptions: (1) a random sample was achieved (i.e., there was no response bias by those who harvested successfully versus those who did not), (2) respondents recorded or remembered data accurately and did not guess or lie, and (3) respondents clearly understood the questions.

Trappers who harvested bobcats and martens were required to bring the animals’ pelts to a Division office or officer to have permanent tags attached and to surrender the lower jaws. Bobcat and marten harvest data presented in this report, such as county of kill and sex of harvest, were collected at that time; as such, that information was not projected. Additional information on bobcat harvest, such as harvest effort by method, trappers-afield, number of sets, and number of days was determined by the survey mentioned in the preceding paragraph. Due to the small number of marten trappers in Utah, we did not attempt to survey marten trappers. Instead, since a separate permit is required to trap marten, we assumed that all those who purchased a marten permit attempted to trap marten.

To determine age structure of the bobcat harvest, a canine tooth from each bobcat jaw was sectioned, and aged using cementum annuli by Matson's Lab in Manhattan, Montana. Survival rates were estimated using the Chapman-Robson estimator. Pelt prices were obtained mainly from a summary of the prices bid at the Utah Trappers Association fur auction, as well as from a survey of registered furdealers buying pelts harvested in Utah.

Because some furbearer species in Utah were rare or not highly sought after by trappers, it was not possible to achieve sufficient sample sizes for these species to make valid statistical inferences. Although the trends for statewide harvest and effort were still valid, at the county level, the harvest and effort estimates had low precision and were likely inaccurate. As such, results by county were only reported for species with a sample size  $\geq 20$ .

### **Corrections and Clarifications**

In an effort to obtain information on how many furbearers of a given species were taken incidentally, furbearer trappers were asked the question "Did you harvest any [species] in traps that were set for a different species, and, if so, how many?" Prior to 2009–10, all incidental harvest was included in the total harvest and harvest effort statistics. In the 2009–10 and 2010–11 annual reports, incidental harvest was included in statewide summaries of total furbearer harvest, but not in species-specific tables. This omission in 2009–10 and 2010–11 caused some confusion because harvest totals did not match between tables. Furthermore, comparisons of species-specific trapping harvest with prior years' numbers were confounded. This annual report was modified, beginning with the 2011–12 report, to include incidental harvest in species-specific statewide historical harvest tables, as well as split out hunt harvest from trapping harvest.

## **RESULTS**

### **License Sales and General Survey Results**

Furbearer licenses were valid for 365 days from the date of purchase. We used the 365-day period of April 1 to March 31 to determine the total number of furbearer licenses sold for the furbearer season. A total of 2,632 furbearer licenses were sold for the 2015–16 season. The percentage of license holders who bought a furbearer license but did not attempt to harvest furbearers was 36%. The number of trappers afield in 2015–16 was 1,696.

### **Furbearer Harvest, Historical Trends, and Economic Value**

The majority of the harvest taken by furbearer license holders in 2015–16 was of non-protected species—coyote, muskrat, and raccoon—and the total harvest of these species has fluctuated considerably over the last ten years. Total harvest of regulated furbearer species (i.e., species with designated trapping seasons) was 5,724 in 2015–16, which was relatively unchanged from the 10-yr average of 5,696. The estimated economic value of Utah's furbearer harvest in 2015–16 was \$594,857.

Furbearer license sales and survey responses, Utah 1982–2016.

Trap year	Furbearer licenses sold			License holders surveyed		Projection factor	% license holders not afield
	Resident	Nonresident	Total	Total	Percent (%)		
1982–83	—	—	1325	664	50.1	—	—
1983–84	—	—	1367	616	45.1	—	—
1984–85	—	—	1491	806	54.1	—	—
1985–86	—	—	1424	680	47.8	—	—
1986–87	—	—	1342	585	43.6	—	—
1987–88	—	—	1576	731	46.4	—	—
1988–89	—	—	1318	721	54.7	—	—
1989–90	—	—	1084	597	55.1	—	—
1990–91	—	—	949	513	54.1	—	30.0
1991–92	—	—	1210	689	56.9	—	2.2
1992–93	—	—	1426	857	60.1	—	16.0
1993–94	—	—	1315	—	—	—	—
1994–95	—	—	1287	585	45.5	—	7.0
1995–96	—	—	1240	683	55.1	—	21.2
1996–97	—	—	1131	606	53.6	—	25.4
1997–98	—	—	1190	498	41.8	—	19.5
1998–99	—	—	1191	395	33.2	—	19.8
1999–00	1172	39	1211	458	37.8	2.6	11.6
2000–01	1204	20	1224	420	34.3	2.9	12.4
2001–02	956	21	977	302	30.9	3.2	11.6
2002–03	1409	40	1449	514	35.5	2.8	16.3
2003–04	1729	47	1776	597	33.6	3.0	16.9
2004–05	1830	65	1895	615	32.5	3.1	18.2
2005–06	1631	57	1688	260	15.4	6.5	27.7
2006–07	2029	81	2110	262	12.4	8.1	26.7
2007–08	2085	55	2140	563	26.3	3.8	31.8
2008–09	2045	57	2102	750	35.7	2.8	34.8
2009–10	1902	34	1936	798	41.2	2.4	30.2
2010–11	1788	29	1817	555	30.5	3.3	30.1
2011–12	1856	36	1892	531	28.1	3.6	33.3
2012–13	2080	52	2132	622	29.2	3.4	34.4
2013–14	2389	60	2449	726	29.6	3.4	35.4
2014–15	2802	67	2869	907	31.6	3.2	41.1
2015–16	2580	52	2632	714	27.1	3.7	35.6
Average	1852	48	1593	601	39.7	2.9	23.6

Statewide total furbearer harvest\* estimates by species, Utah 2006–2016.

Species	Trap year										Average 2006–16
	2006–07**	2007–08	2008–09	2009–10	2010–11	2011–12	2012–13	2013–14	2014–15	2015–16	
Badger	—	275	287	334	309	217	302	371	417	648	351
Beaver	—	745	1165	1910	1052	1026	2276	2021	1388	1511	1455
Bobcat	3377	2437	2062	1167	1002	1245	1365	1870	2919	1683	1913
Coyote	—	7637	6945	6674	8128	5296	5749	5784	6873	8001	6787
Gray fox	—	1093	1747	1392	907	1002	1288	1318	1015	1106	1208
Kit fox	—	39	104	51	45	110	373	14	145	99	109
Marten	7	21	4	2	36	14	26	16	22	9	16
Mink	—	186	242	395	636	221	867	1012	341	188	454
Muskrat	—	1665	1198	5505	7698	8266	13650	8764	6092	6175	6557
Raccoon	—	3990	2368	5018	5946	4141	6239	5482	5437	4748	4819
Red fox	—	1130	872	2657	2864	2273	2056	2517	2272	1880	2058
Ringtail	—	108	59	109	62	28	62	101	64	70	74
Spotted skunk	—	45	238	116	276	264	154	240	399	380	235
Striped skunk	—	848	1697	3270	2733	1679	2465	1970	1875	2211	2083
Weasel	—	15	11	60	37	25	131	13	76	30	44

\*Total harvest includes incidental take.

\*\*Due to errors in the 2006–07 furbearer season telephone survey, harvest and effort data is unavailable for all species but bobcat and marten.



Statewide furbearer trapping harvest statistics\* by species, Utah 2015–16.

Species	Trappers afield	Trap harvest	Set-days	Set-days / furbearer	Furbearers / 1000 set-days	Furbearers / trapper	Pelt price (\$)
Badger	103	140	53779	383.9	2.6	1.4	7.63
Beaver	214	1486	41150	27.7	36.1	6.9	7.46
Bobcat	982	1543	739720	479.4	2.1	1.6	151.63
Coyote	593	4801	833147	173.5	5.8	8.1	29.63
Gray fox	144	623	186204	298.9	3.3	4.3	10.75
Kit fox	22	37	10893	295.5	3.4	1.7	6.54
Marten	46	9	—	—	—	—	—
Mink	74	133	8091	61.0	16.4	1.8	4.22
Muskrat	206	6130	81884	13.4	74.9	29.7	1.89
Raccoon	288	3631	160134	44.1	22.7	12.6	4.10
Red fox	306	1183	212975	180.0	5.6	3.9	15.37
Ringtail	15	18	435	23.6	42.4	1.3	12.56
Spotted skunk	26	55	8032	145.3	6.9	2.1	6.09
Striped skunk	88	1187	71628	60.3	16.6	13.4	4.40
Weasel	22	11	2849	257.7	3.9	0.5	3.06

\*Does not include incidental harvest.

Statewide furbearer hunting harvest by species, Utah 2015–16.

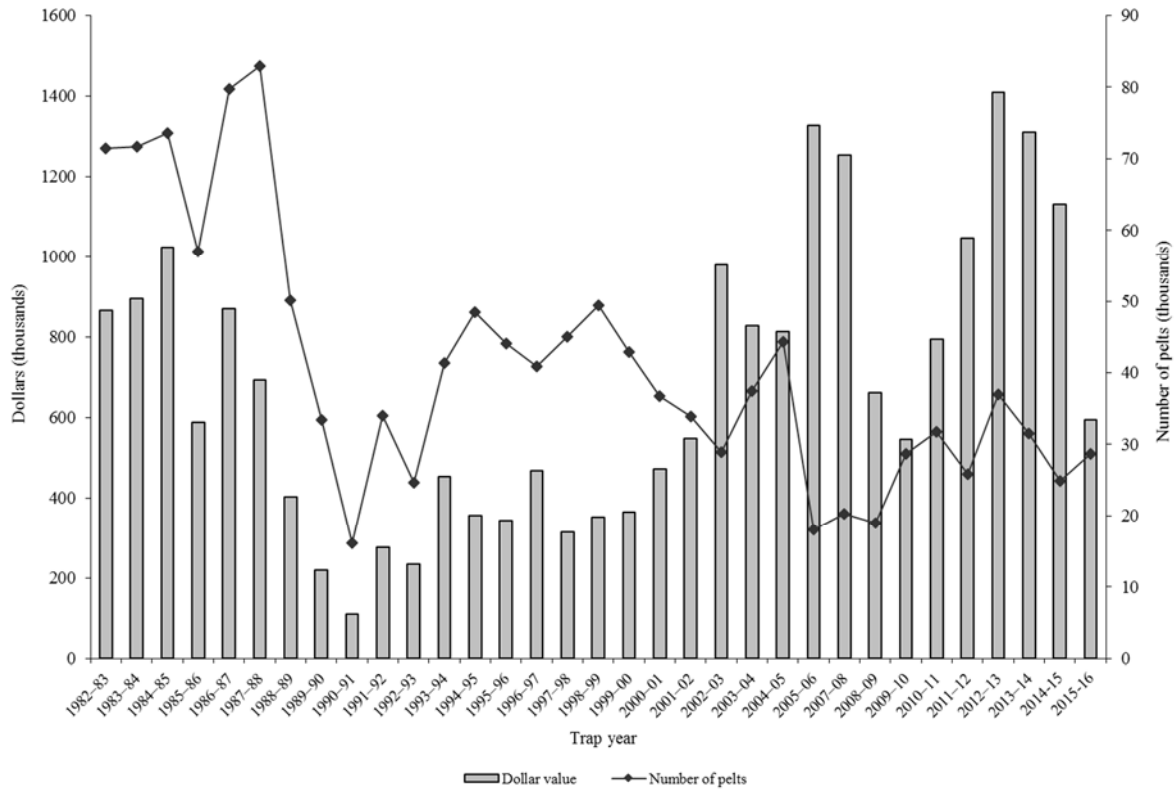
Species	Hunters afield	Hunt harvest	Hunting days	Days / furbearer	Furbearers / hunter
Badger	48	44	509	11.5	0.9
Beaver	4	4	7	2.0	1.0
Bobcat	298	140	3819	27.3	0.5
Coyote	538	3034	11046	3.6	5.6
Gray fox	7	33	26	0.8	4.5
Kit fox	7	44	107	2.4	6.0
Mink	0	—	—	—	—
Muskrat	4	4	4	1.0	1.0
Raccoon	66	490	917	1.9	7.4
Red fox	74	203	815	4.0	2.8
Ringtail	4	0	4	—	—
Spotted skunk	7	4	332	90.0	0.5
Striped skunk	22	206	317	1.5	9.3
Weasel	4	4	4	1.0	1.0

Number of furbearers harvested in traps set for other species, Utah 2015–16.

Species	Incidental harvest	Trap / hunt harvest	Total harvest	% incidental harvest
Badger	464	184	648	71.6
Beaver	22	1489	1511	1.5
Bobcat	141	1683	1683	8.4
Coyote	166	7835	8001	2.1
Gray fox	450	656	1106	40.7
Kit fox	18	81	99	18.2
Marten	0	9	9	0.0
Mink	55	133	188	29.3
Muskrat	41	6134	6175	0.7
Raccoon	627	4121	4748	13.2
Red fox	494	1386	1880	26.3
Ringtail	52	18	70	74.3
Spotted skunk	321	59	380	84.5
Striped skunk	818	1393	2211	37.0
Weasel	15	15	30	50.0
Total	3684	25196	28739	12.8

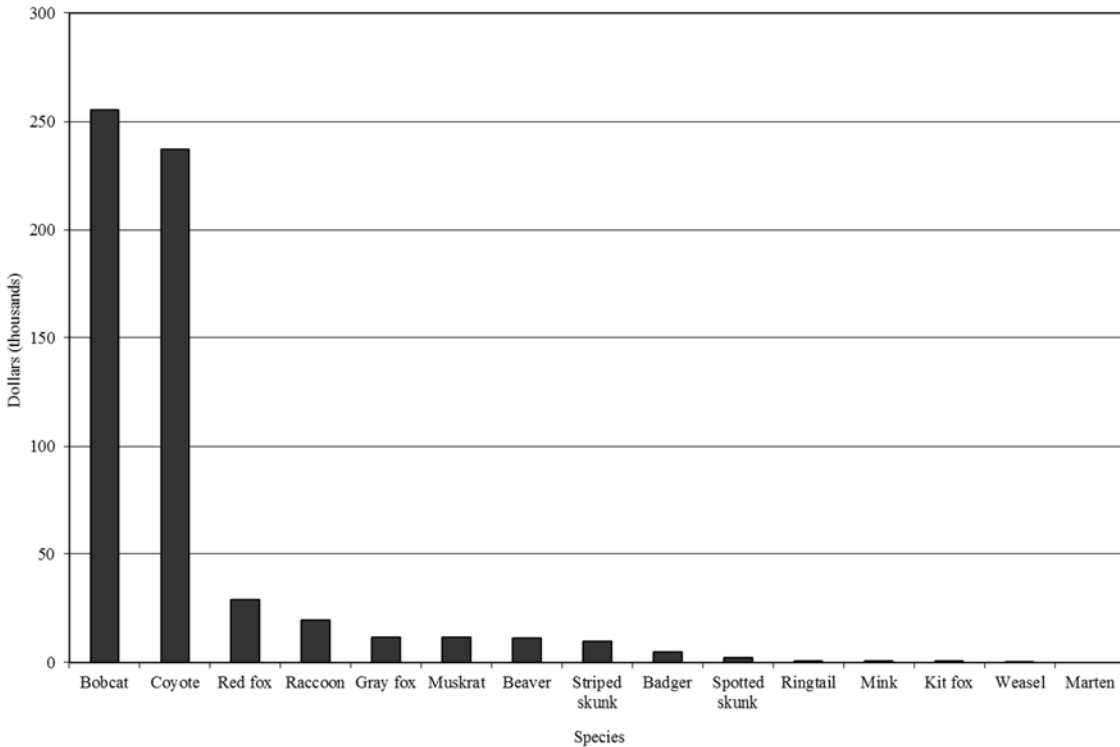
\*Incidental bobcat harvest is accounted for in trap harvest.

Estimated economic value of the furbearer harvest taken by trappers in Utah, 1982–2016.



\*No data available for 2007.

Proportional economic value of the furbearer harvest taken by trappers in Utah, by species, 2015–16.



Economic value\* (in dollars) of furbearer species in Utah’s annual furbearer harvest, Utah 1982–2016.

Trap year	Species														Total economic value (\$)
	Badger	Beaver	Bobcat	Coyote	Gray fox	Kit fox	Marten	Mink	Muskrat	Raccoon	Red fox	Ringtail	Skunk	Weasel	
1982–83	5945	20418	434340	203240	37352	7244	10	4394	119096	10526	16391	1430	4620	59	865064
1983–84	4794	25211	498960	152358	34353	8369	1680	3460	136033	11105	14869	1497	3597	0	896285
1984–85	6794	43796	511464	193809	48147	7272	288	4948	133589	18208	32220	794	22126	56	1023511
1985–86	1964	47463	301410	95322	21147	4568	2783	5022	72903	13751	21386	433	0	0	588152
1986–87	3239	93684	316416	166417	36848	5415	565	8802	157919	30439	49262	746	0	185	869938
1987–88	2772	69184	250635	107590	35779	5751	2000	12703	144058	24645	34765	643	2524	250	693300
1988–89	1943	27264	230282	27104	14837	4488	310	9129	46760	23932	16070	1060	290	23	403492
1989–90	1749	40991	85986	28913	5825	1164	0	7018	15039	14242	17550	350	387	8	219223
1990–91	1250	10066	45849	20892	2060	869	0	3437	6463	5375	12636	347	194	9	109446
1991–92	2015	13338	100672	65100	2762	520	0	4924	31275	10729	39194	708	4148	6	275390
1992–93	2308	7399	105390	57740	2988	821	0	2850	13715	4757	31635	425	4887	8	234924
1993–94	1709	16888	148962	128971	8244	1412	0	3970	42502	15768	74511	259	10768	158	454120
1994–95	4555	32270	90536	65890	7417	3425	0	2933	49362	18332	67159	1019	13359	20	356277
1995–96	2904	20502	71241	67722	8818	1363	0	5502	54883	23516	74399	947	11622	613	344032
1996–97	2888	27474	127995	75238	4257	1097	0	2946	83902	56444	74710	537	10356	96	467939
1997–98	1786	39328	75138	34862	3019	336	0	1958	54083	49790	42345	170	11878	85	314778
1998–99	5393	27642	116859	46840	6055	1228	43	2453	37878	38437	50120	575	18297	182	352002
1999–00	5646	20093	118175	67181	6124	531	0	2543	21086	30147	69531	710	23205	—	364973
2000–01	7731	20557	187868	71461	9272	987	—	2303	16394	29298	90184	708	33517	1318	471598
2001–02	4290	18326	275534	70404	15355	1833	—	1477	38945	30431	78140	1039	12208	—	547983
2002–03	7428	16288	588238	177649	24217	1643	—	555	10071	22486	124008	598	7344	14	980538
2003–04	8480	25112	411826	171428	18959	3432	0	5384	16920	59889	83827	656	23050	0	828964
2004–05	5901	37056	433104	144177	13009	2326	0	2847	23575	41889	88152	1412	19785	247	813480
2005–06	1802	39742	1049147	128773	14562	1998	—	2213	3271	32419	45632	959	6374	—	1326894
2007–08	4970	13037	946596	166006	42838	307	—	1736	5067	43288	24200	1604	4375	45	1254069

\*Economic value was determined by multiplying average pelt price by total harvest for a given species.

Species with missing values contributed to Utah’s annual furbearer harvest but were not included in the economic value estimate due to missing average pelt price or harvest data. No data was available for 2006–07. From 2001 to 2005, average striped skunk pelt price was used to calculate all skunk (spotted and striped) economic value.

Economic value\* (in dollars) of furbearer species in Utah’s annual furbearer harvest, Utah 1982–2016 (cont.).

Trap year	Species														Total economic value (\$)
	Badger	Beaver	Bobcat	Coyote	Gray fox	Kit fox	Marten	Mink	Muskrat	Raccoon	Red fox	Ringtail	Skunk	Weasel	
2008–09	4996	15319	492186	75399	29816	791	—	1442	2988	14713	15676	631	7256	—	661214
2009–10	6458	22160	261073	98766	23047	483	—	3160	27148	35589	43366	1635	22895	458	546238
2010–11	5338	13421	369686	203226	19019	571	972	7170	41555	48575	64790	1173	18607	267	794368
2011–12	4435	16017	567920	230005	23177	1594	550	3333	60140	32162	96534	342	9823	114	1046146
2012–13	5225	46112	765710	227430	40152	5360	1462	16629	110710	87845	87380	971	14580	—	1409567
2013–14	5834	28951	761918	216267	31870	200	519	16406	76492	52102	101665	1809	16949	65	1311048
2014–15	4875	16101	651258	315333	16402	1034	483	2922	22906	29686	55210	1105	13173	296	1130784
2015–16	4944	11272	255193	237070	11890	647	—	793	11671	19467	28896	879	12043	92	594857
Average	4314	27954	352957	125412	18776	2396	467	4769	51164	29696	53528	854	11037	167	683351

\*Economic value was determined by multiplying average pelt price by total harvest for a given species.

Species with missing values contributed to Utah’s annual furbearer harvest but were not included in the economic value estimate due to missing average pelt price or harvest data.

## **HARVEST BY SPECIES**

## BADGER

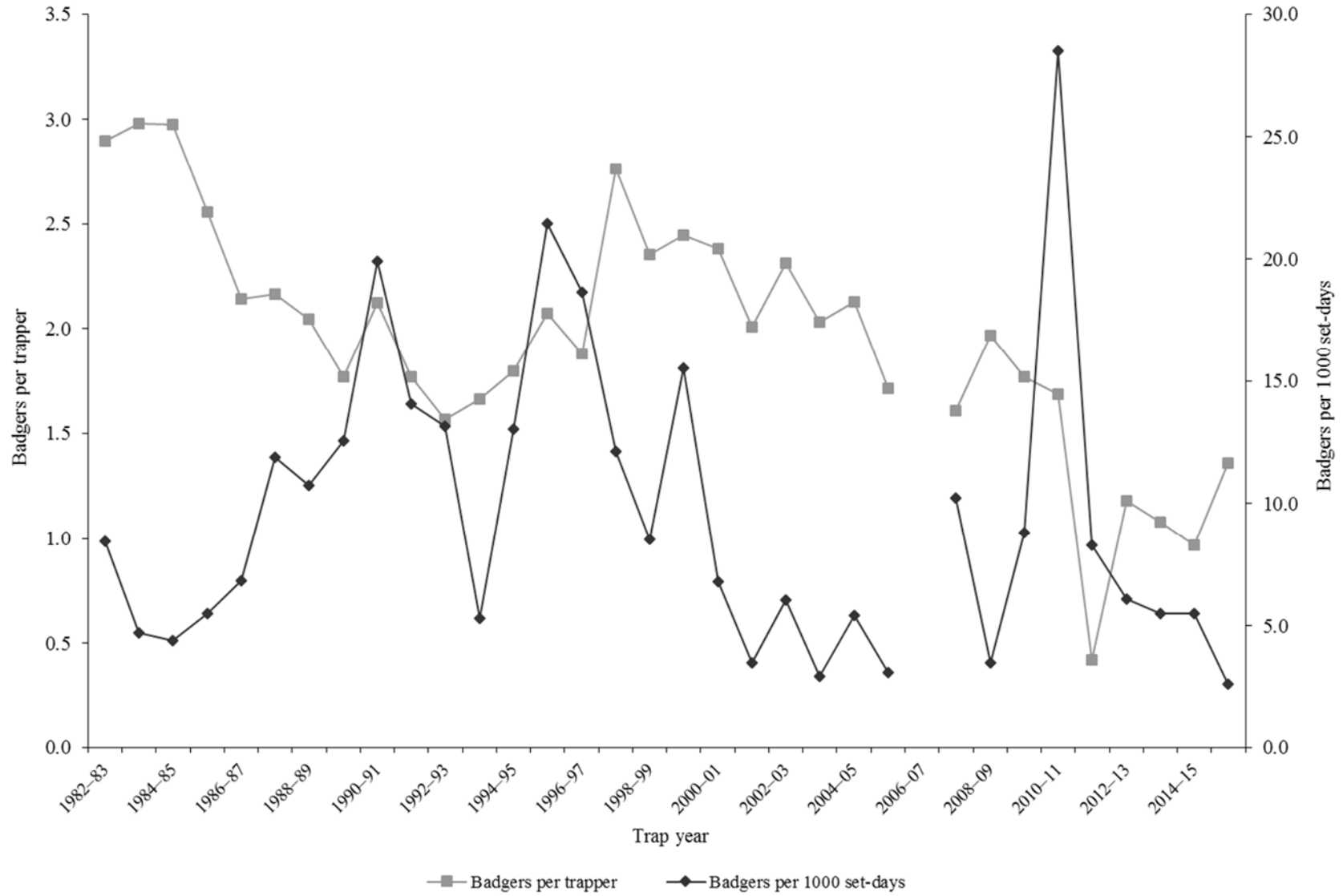
Statewide badger harvest statistics\*, Utah 1982–2016.

Trap year	Trappers afield	Incidental harvest	Trap harvest	Hunt harvest	Set-days / badger	Badgers / 1000 set-days	Badgers / trapper	Pelt price (\$)
1982–83	250	—	725	—	118	8.5	2.9	8.20
1983–84	188	—	560	—	212	4.7	3.0	8.56
1984–85	225	—	670	—	227	4.4	3.0	10.14
1985–86	194	—	496	—	182	5.5	2.6	3.96
1986–87	198	—	424	—	146	6.8	2.1	7.64
1987–88	212	—	459	—	84	11.9	2.2	6.04
1988–89	204	—	417	—	93	10.7	2.0	4.66
1989–90	207	—	366	—	80	12.5	1.8	4.78
1990–91	81	—	172	—	50	19.9	2.1	7.27
1991–92	134	—	237	—	71	14.1	1.8	8.50
1992–93	148	—	232	—	76	13.2	1.6	9.95
1993–94	143	—	238	—	188	5.3	1.7	7.18
1994–95	182	—	327	—	77	13.0	1.8	13.93
1995–96	133	—	276	—	47	21.4	2.1	10.52
1996–97	118	—	222	—	54	18.7	1.9	13.01
1997–98	98	—	271	—	83	12.1	2.7	6.59
1998–99	135	—	318	—	117	8.5	2.4	16.96
1999–00	177	—	433	—	64	15.5	2.4	13.04
2000–01	189	—	450	—	147	6.8	2.4	17.18
2001–02	137	—	275	—	288	3.5	2.0	15.60
2002–03	234	—	541	—	165	6.0	2.3	13.73
2003–04	223	—	453	—	341	2.9	2.0	18.72
2004–05	203	—	432	—	184	5.4	2.1	13.66
2005–06	70	—	120	—	324	3.1	1.7	15.02
2006–07	187	—	—	—	—	—	—	18.07
2007–08	171	—	275	—	98	10.2	1.6	14.14
2008–09	146	—	287	—	282	3.5	2.0	17.41
2009–10	78	196	138	—	113	8.8	1.8	19.34
2010–11	115	115	194	—	35	28.5	1.7	17.27
2011–12	110	82	46	89	120	8.3	0.4	20.44
2012–13	99	147	117	38	163	6.1	1.2	17.36
2013–14	91	216	98	57	180	5.5	1.1	15.73
2014–15	92	297	89	32	183	5.5	1.0	11.69
2015–16	103	464	140	44	384	2.6	0.9	7.63
Average	155	217	318	52	151	9.5	1.9	12.17

Prior to the 2005–06 season, harvest by hunting and trapping were not collected separately and trapping harvest estimates included harvest by both hunters and trappers. Trap harvest includes incidental harvest.

\*Trappers and badgers per trapper include hunters and their harvest. Set-days per badger and badgers per 1000 set-days are based only on trapping activity, and do not include hunt harvest or hunter-days afield.

Statewide badger harvest trends, Utah 1982–2016.





Badger trapping harvest statistics by county and ecoregion, Utah 2015–16.

County	n	Trappers afield	Trap harvest	Traps set	Trapping days	Set-days	Set-days / badger	Badgers / 1000 set-days	Badgers / trapper
Beaver	0	0	—	—	—	—	—	—	—
Box Elder	1	4	7	7	111	221	30.0	33.3	2.0
Iron	3	11	22	114	479	7778	351.7	2.8	2.0
Juab	1	4	4	4	7	7	2.0	500.0	1.0
Millard	2	7	0	11	55	85	—	0.0	0.0
Tooele	3	11	11	29	347	1054	95.3	10.5	1.0
Great Basin totals	10	37	44	166	999	9146	206.8	4.8	1.2
Cache	1	4	4	4	11	11	3.0	333.3	1.0
Davis	0	0	—	—	—	—	—	—	—
Morgan	0	0	—	—	—	—	—	—	—
Piute	1	4	4	74	324	6488	1760.0	0.6	1.0
Rich	1	4	11	18	52	258	23.3	42.9	3.0
Salt Lake	0	0	—	—	—	—	—	—	—
Sanpete	0	0	—	—	—	—	—	—	—
Sevier	0	0	—	—	—	—	—	—	—
Summit	3	11	29	22	347	582	19.8	50.6	2.7
Utah	0	0	—	—	—	—	—	—	—
Wasatch	1	4	0	22	15	88	—	0.0	0.0
Weber	0	0	—	—	—	—	—	—	—
Rocky Mountain totals	7	26	48	140	748	7428	155.0	6.5	1.9
Daggett	1	4	7	74	166	3318	450.0	2.2	2.0
Duchesne	2	7	11	52	203	1364	123.3	8.1	1.5
Uintah	2	7	0	11	59	111	—	0.0	0.0
Uintah Basin totals	5	18	18	136	428	4792	260.0	3.8	1.0
Carbon	0	0	—	—	—	—	—	—	—
Emery	1	4	4	88	166	3981	1080.0	0.9	1.0
Garfield	0	0	—	—	—	—	—	—	—
Grand	1	4	7	7	15	29	4.0	250.0	2.0
Kane	2	7	7	192	184	8036	1090.0	0.9	1.0
San Juan	1	4	7	328	229	20341	2759.0	0.4	2.0
Washington	0	0	—	—	—	—	—	—	—
Wayne	0	0	—	—	—	—	—	—	—
Colorado Plateau totals	5	18	26	616	593	32388	1255.1	0.8	1.4
Unknown	1	4	4	4	26	26	7.0	142.9	1.0
Statewide totals*	28	103	140	1062	2794	53779	383.9	2.6	1.4

\*Statewide totals for sample size and trappers afield are not totals of the columns because trappers trapped multiple counties.

## BEAVER

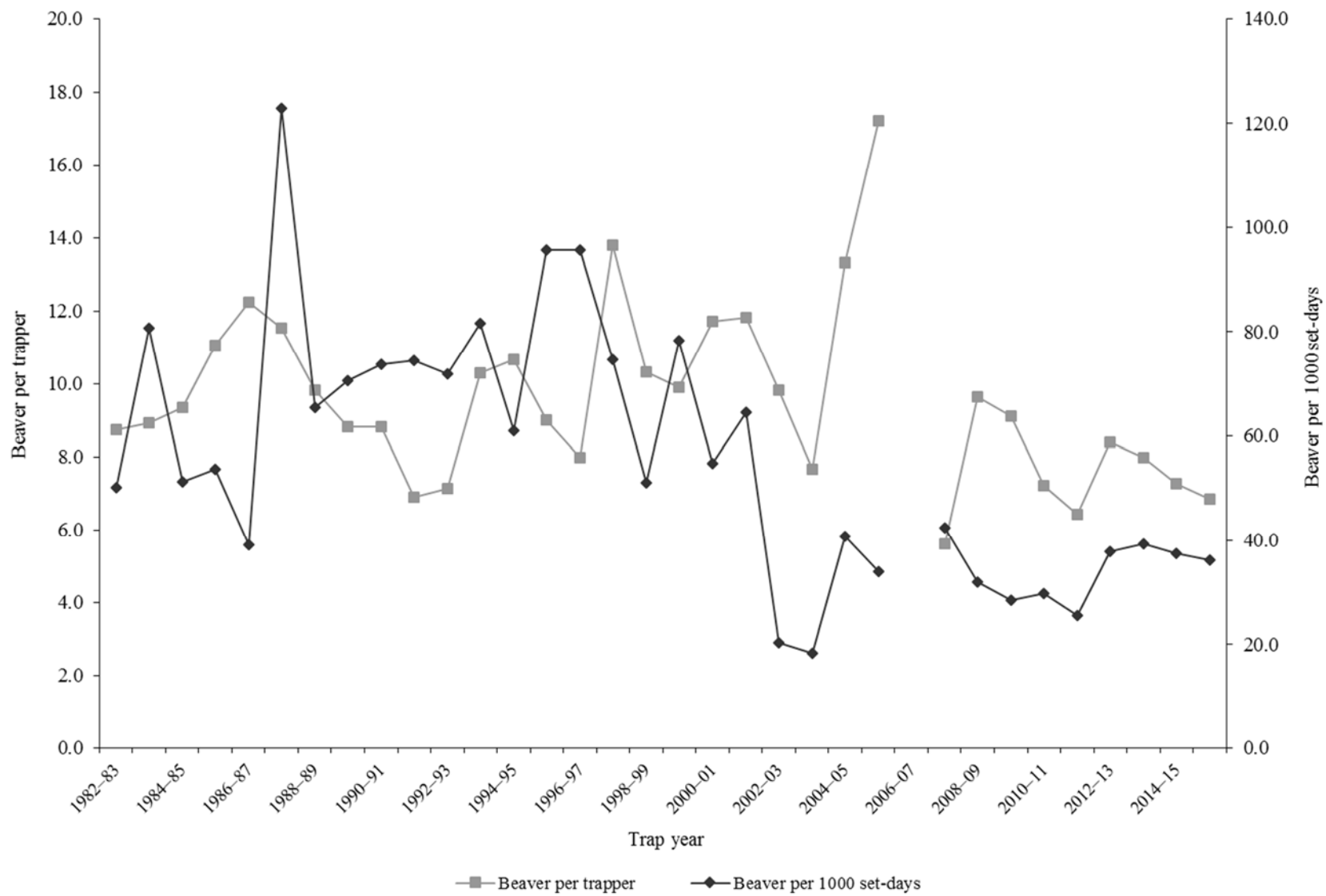
Statewide beaver harvest statistics\*, Utah 1982–2016.

Trap year	Trappers afield	Incidental harvest	Trap harvest	Hunt harvest	Set-days / beaver	Beavers / 1000 set-days	Beavers / trapper	Pelt price (\$)
1982–83	181	—	1584	—	20	50.1	8.8	12.89
1983–84	200	—	1788	—	12	80.8	8.9	14.10
1984–85	285	—	2664	—	20	51.3	9.3	16.44
1985–86	293	—	3242	—	19	53.7	11.1	14.64
1986–87	338	—	4138	—	26	39.2	12.2	22.64
1987–88	409	—	4716	—	8	122.9	11.5	14.67
1988–89	277	—	2721	—	15	65.4	9.8	10.02
1989–90	390	—	3436	—	14	70.5	8.8	11.93
1990–91	176	—	1551	—	14	73.8	8.8	6.49
1991–92	216	—	1492	—	13	74.5	6.9	8.94
1992–93	134	—	956	—	14	71.9	7.1	7.74
1993–94	171	—	1761	—	12	81.6	10.3	9.59
1994–95	239	—	2551	—	16	61.0	10.7	12.65
1995–96	170	—	1530	—	10	95.7	9.0	13.40
1996–97	163	—	1299	—	10	95.7	8.0	21.15
1997–98	210	—	2896	—	13	74.6	13.8	13.58
1998–99	286	—	2950	—	20	51.0	10.3	9.37
1999–00	185	—	1830	—	13	78.4	9.9	10.98
2000–01	170	—	1992	—	18	54.7	11.7	10.32
2001–02	143	—	1689	—	16	64.5	11.8	10.85
2002–03	175	—	1720	—	49	20.3	9.8	9.47
2003–04	232	—	1781	—	55	18.2	7.7	14.10
2004–05	200	—	2664	—	25	40.7	13.3	13.91
2005–06	130	—	2239	—	29	33.9	17.2	17.75
2006–07	122	—	—	—	—	—	—	16.31
2007–08	133	—	745	—	24	42.5	5.6	17.50
2008–09	121	—	1165	—	31	31.9	9.6	13.15
2009–10	209	6	1904	—	35	28.5	9.1	11.60
2010–11	144	13	1039	—	34	29.8	7.2	12.76
2011–12	157	18	1008	—	39	25.4	6.4	15.61
2012–13	267	17	2245	14	26	37.9	8.4	20.26
2013–14	240	98	1913	10	25	39.3	8.0	14.33
2014–15	183	47	1332	9	27	37.5	7.3	11.60
2015–16	217	22	1486	4	28	36.1	6.8	7.46
Average	211	32	2061	9	22	55.5	9.6	13.18

Prior to the 2005–06 season, harvest by hunting and trapping were not collected separately and trapping harvest estimates included harvest by both hunters and trappers. Trap harvest includes incidental harvest.

\*Trappers and beavers per trapper include hunters and their harvest. Set-days per beaver and beavers per 1000 set-days are based only on trapping activity, and do not include hunt harvest or hunter-days afield

Statewide beaver harvest trends, Utah 1982–2016.



Beaver trapping harvest statistics by county and ecoregion, Utah 2015–16.

County	n	Trappers afield	Trap harvest	Traps set	Trapping days	Set-days	Set-days / beaver	Beavers / 1000 set-days	Beavers / trapper
Beaver	0	0	—	—	—	—	—	—	—
Box Elder	7	26	144	122	335	1334	9.3	107.7	5.6
Iron	0	0	—	—	—	—	—	—	—
Juab	1	4	7	11	22	66	9.0	111.1	2.0
Millard	0	0	—	—	—	—	—	—	—
Tooele	0	0	—	—	—	—	—	—	—
Great Basin totals	8	29	151	133	358	1401	9.3	107.9	5.1
Cache	6	22	96	125	723	4372	45.6	21.9	4.3
Davis	3	11	4	48	125	317	86.0	11.6	0.3
Morgan	3	11	41	55	136	664	16.4	61.1	3.7
Piute	0	0	—	—	—	—	—	—	—
Rich	3	11	103	88	129	1106	10.7	93.3	9.3
Salt Lake	2	7	55	63	192	2779	50.3	19.9	7.5
Sanpete	0	0	—	—	—	—	—	—	—
Sevier	0	0	—	—	—	—	—	—	—
Summit	4	15	55	92	284	1865	33.7	29.6	3.8
Utah	6	22	162	195	568	5872	36.2	27.6	7.3
Wasatch	4	15	118	195	192	1570	13.3	75.1	8.0
Weber	6	22	162	192	391	4788	29.5	33.9	7.3
Rocky Mountain totals	37	136	796	1054	2739	23334	29.3	34.1	5.8
Daggett	1	4	15	18	4	18	1.3	800.0	4.0
Duchesne	5	18	103	74	181	1091	10.6	94.6	5.6
Uintah	8	29	206	232	811	7701	37.3	26.8	7.0
Uintah Basin totals	14	52	324	324	995	8810	27.2	36.8	6.3
Carbon	2	7	92	48	210	1921	20.8	48.0	12.5
Emery	3	11	55	136	210	4169	75.4	13.3	5.0
Garfield	0	0	—	—	—	—	—	—	—
Grand	0	0	—	—	—	—	—	—	—
Kane	0	0	—	—	—	—	—	—	—
San Juan	0	0	—	—	—	—	—	—	—
Washington	1	4	0	11	63	188		0.0	0.0
Wayne	1	4	0	22	18	111		0.0	0.0
Colorado Plateau totals	7	26	147	217	501	6388	43.3	23.1	5.7
Unknown	1	4	66	41	111	1216	18.3	54.5	18.0
Statewide totals*	58	214	1486	1769	4704	41150	27.7	36.1	6.9

\*Statewide totals for sample size and trappers afield are not totals of the columns because trappers trapped multiple counties.

## BOBCAT

Statewide bobcat trapping harvest statistics, Utah 1982–2016.

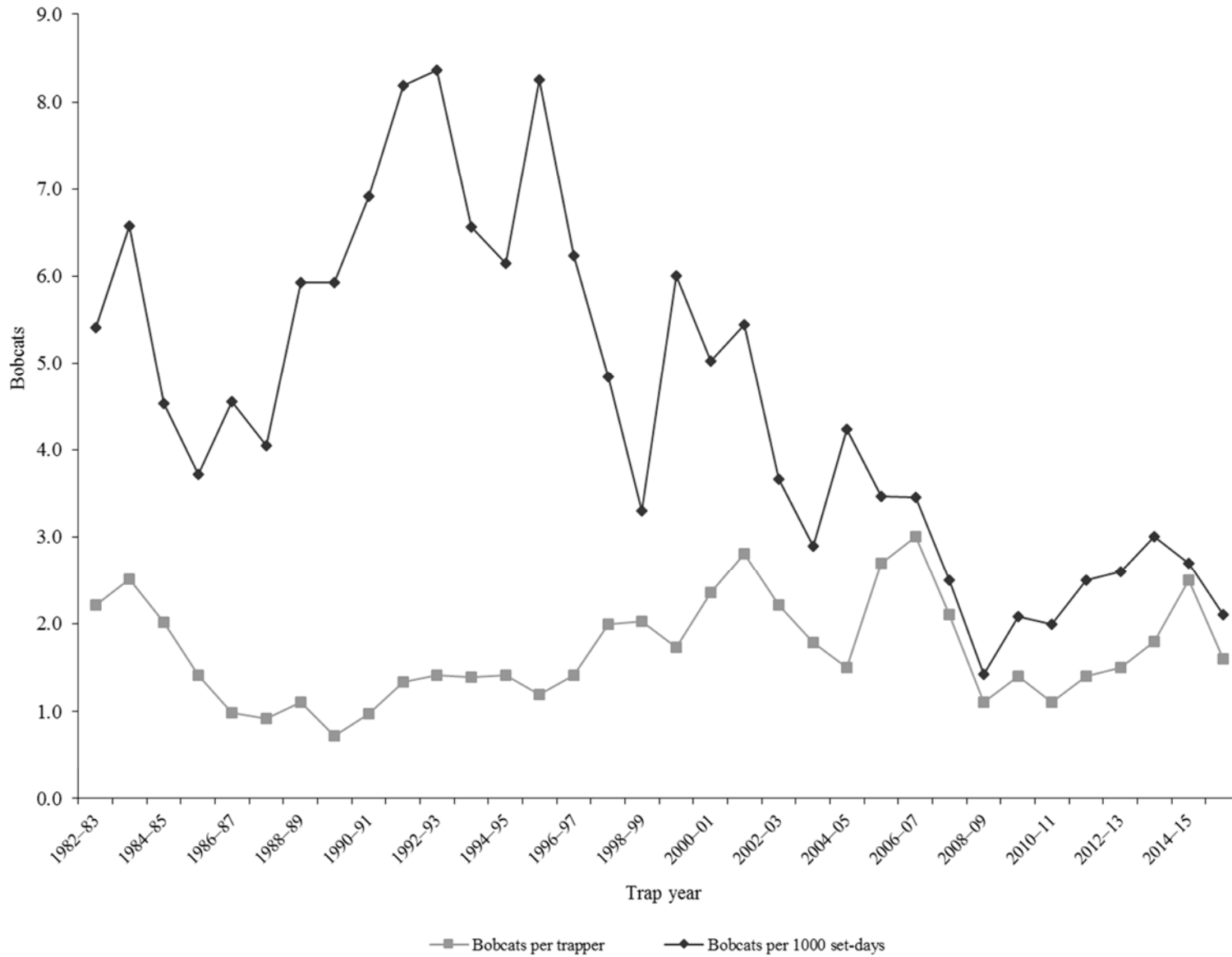
Trap year	Trappers afield	Trap harvest	Set-days	Set-days / bobcat	Bobcats / 1000 set-days	Bobcats / trapper	Pelt price (\$)
1982–83	1145	2540	469979	185	5.4	2.2	171.00
1983–84	1050	2640	401841	152	6.6	2.5	189.00
1984–85	1253	2532	559480	221	4.5	2.0	202.00
1985–86	1083	1530	411493	269	3.7	1.4	197.00
1986–87	1036	1024	224778	220	4.6	1.0	309.00
1987–88	1108	1023	252680	247	4.0	0.9	245.00
1988–89	941	1042	175990	169	5.9	1.1	221.00
1989–90	1167	843	142360	169	5.9	0.7	102.00
1990–91	542	527	76218	145	6.9	1.0	87.00
1991–92	726	968	118293	122	8.2	1.3	104.00
1992–93	827	1171	139949	120	8.4	1.4	90.00
1993–94	900	1256	191367	152	6.6	1.4	118.60
1994–95	914	1293	210522	163	6.1	1.4	70.02
1995–96	749	896	108594	121	8.3	1.2	79.51
1996–97	615	866	138899	160	6.2	1.4	147.80
1997–98	619	1234	255147	207	4.8	2.0	60.89
1998–99	1031	2092	633774	303	3.3	2.0	55.86
1999–00	828	1430	238152	167	6.0	1.7	82.64
2000–01	852	2008	399609	199	5.0	2.4	93.56
2001–02	666	1866	342678	184	5.4	2.8	147.66
2002–03	984	2176	593692	273	3.7	2.2	270.33
2003–04	1133	2027	701383	346	2.9	1.8	203.17
2004–05	1300	1954	462019	236	4.2	1.5	221.65
2005–06	979	2625	757380	289	3.5	2.7	358.56
2006–07	1017	3037	877870	289	3.5	3.0	197.53
2007–08	985	2091	836519	400	2.5	2.1	388.43
2008–09	1630	1796	1258813	701	1.4	1.1	238.69
2009–10	717	1017	488709	481	2.1	1.4	223.71
2010–11	771	846	416474	492	2.0	1.1	368.95
2011–12	755	1094	437912	400	2.5	1.4	456.16
2012–13	836	1214	475902	392	2.6	1.5	560.96
2013–14	953	1690	562430	333	3.0	1.8	407.44
2014–15	1105	2776	1036043	373	2.7	2.5	223.11
2015–16	982	1543	739720	479	2.1	1.6	151.63
Average	947	1608	445196	269	4.5	1.7	207.17

Prior to the 2005–06 season, harvest by hunting and trapping were not collected separately and trapping harvest estimates included harvest by both hunters and trappers. Trap harvest includes incidental harvest.

Statewide bobcat hunting harvest statistics, Utah 2005–2016.

Trap year	Hunters afield	Hunt harvest	Hunter-days afield	Hunter-days / bobcat	Bobcats / hunter
2005–06	612	301	8194	27	0.5
2006–07	440	340	10408	31	0.8
2007–08	557	346	10089	29	0.6
2008–09	438	266	7360	28	0.6
2009–10	370	150	5253	35	0.4
2010–11	355	156	5888	38	0.4
2011–12	329	151	4146	28	0.5
2012–13	206	151	2739	18	0.7
2013–14	182	180	2901	16	1.0
2014–15	305	143	4203	29	0.5
2015–16	298	140	3819	27	0.5
Average	372	211	5909	28	0.6

Statewide bobcat trapping harvest trends, Utah 1982–2016.



Bobcat trapping harvest statistics by county and ecoregion, Utah 2015–16.

County	n	Trappers afield	Trap harvest**	Traps set	Trapping days	Set-days	Set-days / bobcat	Bobcats / 1000 set-days	Bobcats / trapper
Beaver	12	48	41	1835	455	26747	652.4	1.5	0.9
Box Elder	15	60	72	2310	648	36987	513.7	1.9	1.2
Iron	14	56	37	2145	773	44346	1198.5	0.8	0.7
Juab	9	36	61	1155	386	23448	384.4	2.6	1.7
Millard	10	40	46	1791	740	52736	1146.4	0.9	1.2
Tooele	17	68	46	2463	672	36790	799.8	1.3	0.7
Great Basin totals	77	310	303	11699	3674	221053	729.5	1.4	1.0
Cache	10	40	5	962	241	6849	1369.8	0.7	0.1
Davis	1	4	2	80	8	161	80.5	12.4	0.5
Morgan	5	20	13	1026	237	17807	1369.8	0.7	0.7
Piute	3	12	26	499	125	7887	303.3	3.3	2.2
Rich	3	12	9	483	185	9175	1019.4	1.0	0.8
Salt Lake	2	8	12	241	181	3622	301.8	3.3	1.5
Sanpete	8	32	13	954	245	14105	1085.0	0.9	0.4
Sevier	19	76	81	2378	853	34233	422.6	2.4	1.1
Summit	6	24	8	1067	366	18331	2291.4	0.4	0.3
Utah	16	64	53	2126	479	17914	338.0	3.0	0.8
Wasatch	1	4	1	241	12	724	724.0	1.4	0.3
Weber	5	20	14	483	185	5457	389.8	2.6	0.7
Rocky Mountain totals	79	318	237	10541	3119	136265	575.0	1.7	0.7
Daggett	6	24	28	805	410	16698	596.4	1.7	1.2
Duchesne	15	60	128	2853	909	40599	317.2	3.2	2.1
Uintah	31	125	182	5055	1332	82218	451.7	2.2	1.5
Uintah Basin totals	52	209	338	8713	2652	139516	412.8	2.4	1.6
Carbon	9	36	87	1256	241	12567	144.4	6.9	2.4
Emery	5	20	45	563	165	6197	137.7	7.3	2.3
Garfield	14	56	157	2110	753	34966	222.7	4.5	2.8
Grand	6	24	72	1207	608	36249	503.5	2.0	3.0
Kane	8	32	169	1030	913	22913	135.6	7.4	5.3
San Juan	8	32	68	1527	664	68945	1013.9	1.0	2.1
Washington	15	60	44	1960	583	29654	674.0	1.5	0.7
Wayne	2	8	22	282	145	5312	241.5	4.1	2.8
Colorado Plateau totals	67	270	664	9934	4072	216803	326.5	3.1	2.5
Unknown	8	32	1	1089	459	26084	26084.0	0.0	0.0
Statewide totals*	244	982	1543	41976	13976	739720	479.4	2.1	1.6

\*Statewide totals for sample size and trappers afield are not totals of the columns because trappers trapped multiple counties.

\*\*Total harvest numbers are from pelt check-in, while numbers of trappers afield and effort are determined from harvest survey.



Bobcat hunting harvest statistics by county and ecoregion, Utah 2015–16.

County	n	Hunters afield	Hunt harvest**	Hunter-days afield	Hunter-days / bobcat	Bobcats / hunter
Beaver	2	8	2	137	68.5	0.3
Box Elder	9	36	10	258	25.8	0.3
Iron	4	16	2	137	68.5	0.1
Juab	4	16	4	68	17.0	0.3
Millard	5	20	4	217	54.3	0.2
Tooele	10	40	6	225	37.5	0.2
Great Basin totals	34	137	28	1042	37.2	0.2
Cache	3	12	9	68	7.6	0.8
Davis	0	0	1	0	0.0	
Morgan	4	16	7	165	23.6	0.4
Piute	0	0	—	—	—	—
Rich	7	28	0	133	—	0.0
Salt Lake	0	0	—	—	—	—
Sanpete	6	24	11	209	19.0	0.5
Sevier	2	8	1	133	133.0	0.1
Summit	3	12	8	72	9.0	0.7
Utah	11	44	20	201	10.1	0.5
Wasatch	4	16	12	133	11.1	0.8
Weber	3	12	2	101	50.5	0.2
Rocky Mountain totals	43	173	71	1215	17.1	0.4
Daggett	3	12	1	117	117.0	0.1
Duchesne	4	16	9	193	21.4	0.6
Uintah	3	12	5	169	33.8	0.4
Uintah Basin totals	10	40	15	479	31.9	0.4
Carbon	3	12	7	105	15.0	0.6
Emery	5	20	6	225	37.5	0.3
Garfield	3	12	3	97	32.3	0.3
Grand	5	20	3	237	79.0	0.2
Kane	2	8	3	105	35.0	0.4
San Juan	5	20	1	109	109.0	0.1
Washington	2	8	2	157	78.5	0.3
Wayne	2	8	1	40	40.0	0.1
Colorado Plateau totals	27	109	26	1075	41.3	0.2
Unknown	4	16	0	8	—	0.0
Statewide totals*	74	298	140	3819	27.3	0.5

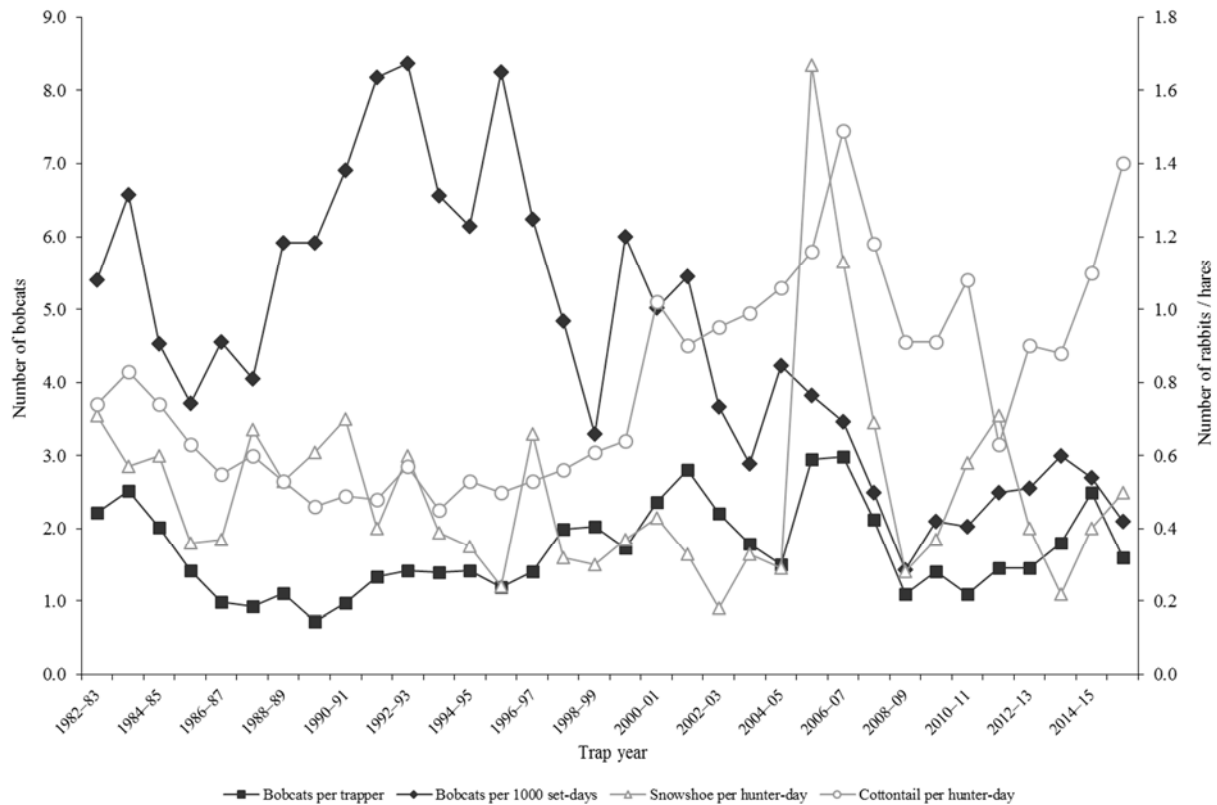
\*Statewide totals for sample size and hunters afield are not totals of the columns because hunters hunted multiple counties.

\*\*Total harvest numbers are from pelt check-in, while numbers of hunters afield and effort are determined from harvest survey.

## Prey index

Lagomorph densities are generally considered to be a good indicator of bobcat recruitment and survival because high lagomorph populations provide an essential prey base for dispersing bobcats. When lagomorph populations are high or increasing, the bobcat population has also increased or at least remained stable. Thus, low populations of lagomorphs will reduce the likelihood of younger bobcats surviving to the next year. Cottontail rabbit and snowshoe hare data are taken from the Utah Upland Game Annual Report 2015–16 (2015–16 seasons).

Relationships in harvest statistics between bobcat and prey, Utah 1982–2016.



## Population trends

### Bobcat harvest age and sex ratios, Utah 1985–2016.

Trap year	Kittens / adult female	Kittens / adult	Male kittens / female kittens	Juveniles / adult	Juv. males / juv. females	Proportion juveniles in harvest	Proportion females in harvest	Males / females
1985–86	0.5	0.2	1.0	—	—	—	—	1.2
1986–87	0.7	0.3	0.9	—	—	—	—	1.1
1987–88	1.2	0.5	1.0	—	—	—	—	1.1
1988–89	1.1	0.4	1.1	—	—	—	—	1.3
1989–90	0.8	0.3	1.0	—	—	—	—	1.4
1990–91	0.8	0.3	0.6	—	—	—	—	1.2
1991–92	0.9	0.7	1.3	—	—	—	—	1.5
1992–93	0.9	1.0	1.2	—	—	—	—	1.4
1993–94	1.6	0.6	1.0	—	—	—	—	1.3
1994–95	0.6	0.6	1.1	0.6	1.1	0.36	0.44	1.3
1995–96	1.4	0.5	0.7	0.5	1.0	0.35	0.44	1.3
1996–97	1.9	0.7	1.1	0.7	1.1	0.41	0.41	1.4
1997–98	1.2	0.4	0.9	0.4	0.9	0.30	0.42	1.4
1998–99	2.1	0.8	1.1	—	—	—	—	1.3
1999–00	0.8	0.3	1.0	1.0	1.4	0.50	0.39	1.6
2000–01	0.7	0.3	1.1	0.9	1.3	0.47	0.39	1.6
2001–02	0.4	0.2	1.0	0.6	1.2	0.38	0.41	1.4
2002–03	0.4	0.2	0.9	0.4	1.0	0.28	0.45	1.2
2003–04	0.6	0.3	0.9	0.5	1.0	0.31	0.47	1.1
2004–05	0.8	0.3	0.8	1.2	1.1	0.55	0.44	1.3
2005–06	5.8	2.5	1.4	2.5	1.4	0.72	0.43	1.4
2006–07	4.1	1.5	1.4	1.5	1.4	0.60	0.43	1.3
2007–08	3.0	1.3	1.1	1.4	1.1	0.56	0.43	1.3
2008–09	0.4	0.2	0.8	0.7	1.0	0.42	0.45	1.2
2009–10	0.7	0.3	1.0	0.6	1.2	0.38	0.47	1.1
2010–11	0.6	0.2	1.1	0.5	1.2	0.31	0.43	1.4
2011–12	0.8	0.3	1.1	0.5	1.2	0.35	0.45	1.2
2012–13	0.6	0.3	0.9	0.5	0.9	0.35	0.48	1.1
2013–14	0.9	0.4	0.9	0.8	0.9	0.46	0.45	1.2
2014–15	1.6	0.8	1.0	1.5	1.2	0.60	0.45	1.2
2015–16	1.4	0.6	0.9	1.6	1.4	0.62	0.44	1.3
Average	1.3	0.6	1.0	0.9	1.1	0.44	0.44	1.3

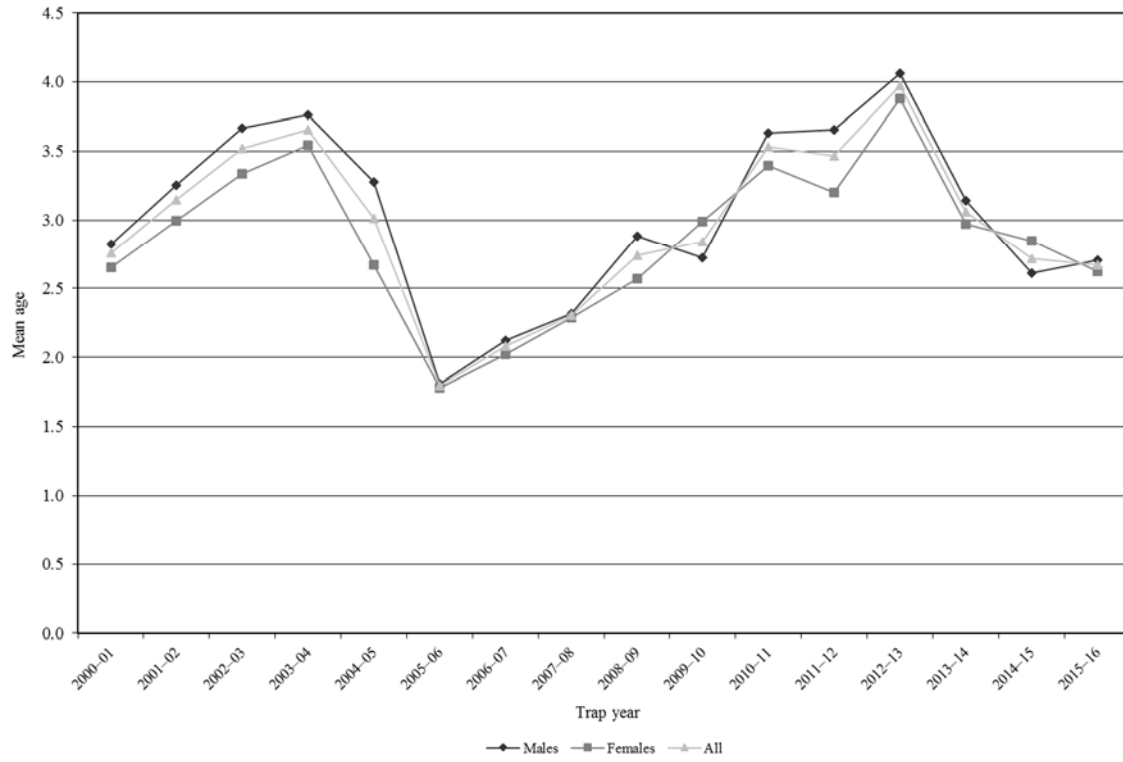
In annual reports prior to 2005–06, the "juvenile" age category referred only to kittens (age 0.5) while "adults" included all bobcats age 1.5 and older. Beginning with the 2005–06 annual report, the term "juvenile" now refers to kittens and yearlings (ages 0.5–1.5), while "adult" includes all bobcats age 2.5 and older.

Adult bobcat survival (from Chapman-Robson estimator), Utah 1985–2016.

Trap year	Survival (%)	95% confidence interval	Chi-square value, degrees of freedom
1985–86	63	60–65	13.2, 9df
1986–87	63	60–65	34.1, 9df
1987–88	65	61–68	19.9, 9df
1988–89	64	60–68	17.3, 8df
1989–90	67	63–71	19.4, 8df
1990–91	58	53–62	28.5, 12df
1991–92	58	55–60	47.9, 14df
1992–93	59	56–63	19.9, 12df
1993–94	54	52–57	34.2, 11df
1994–95	57	54–59	17.2, 14df
1995–96	64	61–66	40.0, 11df
1996–97	68	65–70	23.4, 12df
1997–98	71	69–74	19.1, 14df
1998–99	71	70–73	35.2, 13df
1999–00	66	64–68	41.0, 15df
2000–01	64	62–66	86.0, 11df
2001–02	65	63–67	87.3, 14df
2002–03	67	65–68	175.5, 13df
2003–04	71	70–72	245.6, 12df
2004–05	74	73–76	83.9, 15df
2005–06	68	65–70	15.7, 12df
2006–07	53	48–58	41.9, 9df
2007–08	58	54–62	63.6, 12df
2008–09	57	54–61	64.5, 14df
2009–10	59	56–62	60.1, 12df
2010–11	69	66–71	90.0, 13df
2011–12	70	66–73	22.7, 13df
2012–13	75	72–78	87.2, 11df
2013–14	70	66–74	52.8, 12df
2014–15	74	71–77	62.2, 13df
2015–16	73	70–76	66.6, 13df
Average	65	—	—

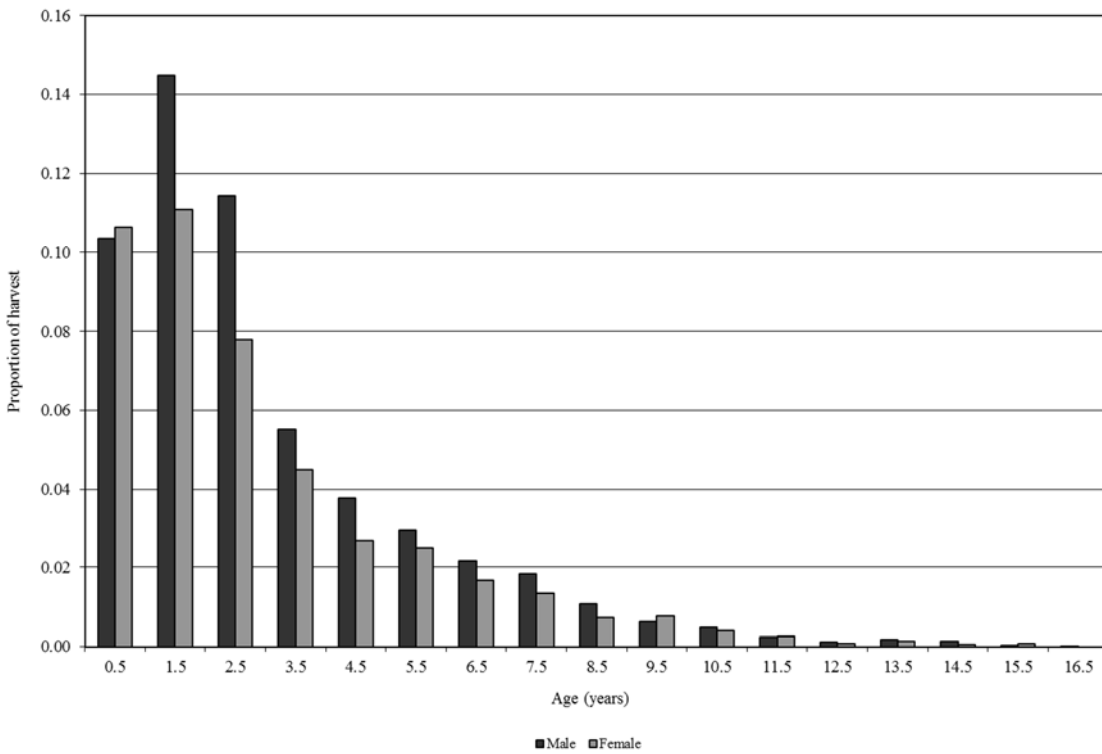
## Age structure

Average age of harvested bobcats, Utah 1999–2016.

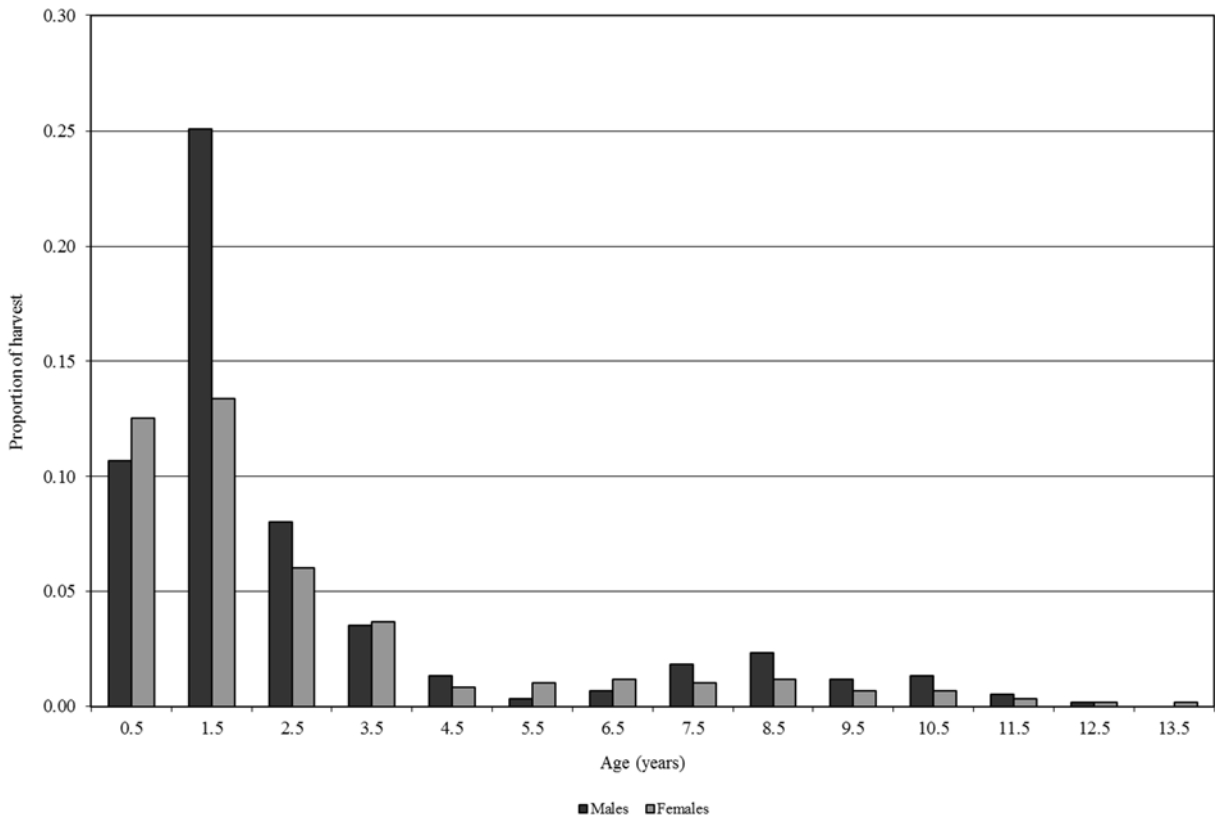


\*Excludes age structure data from the 1998–99 trap season.

Average proportion of bobcats harvested by age category, Utah 2006–2016.



Age structure of harvested bobcats, Utah 2015–16.



# COYOTE

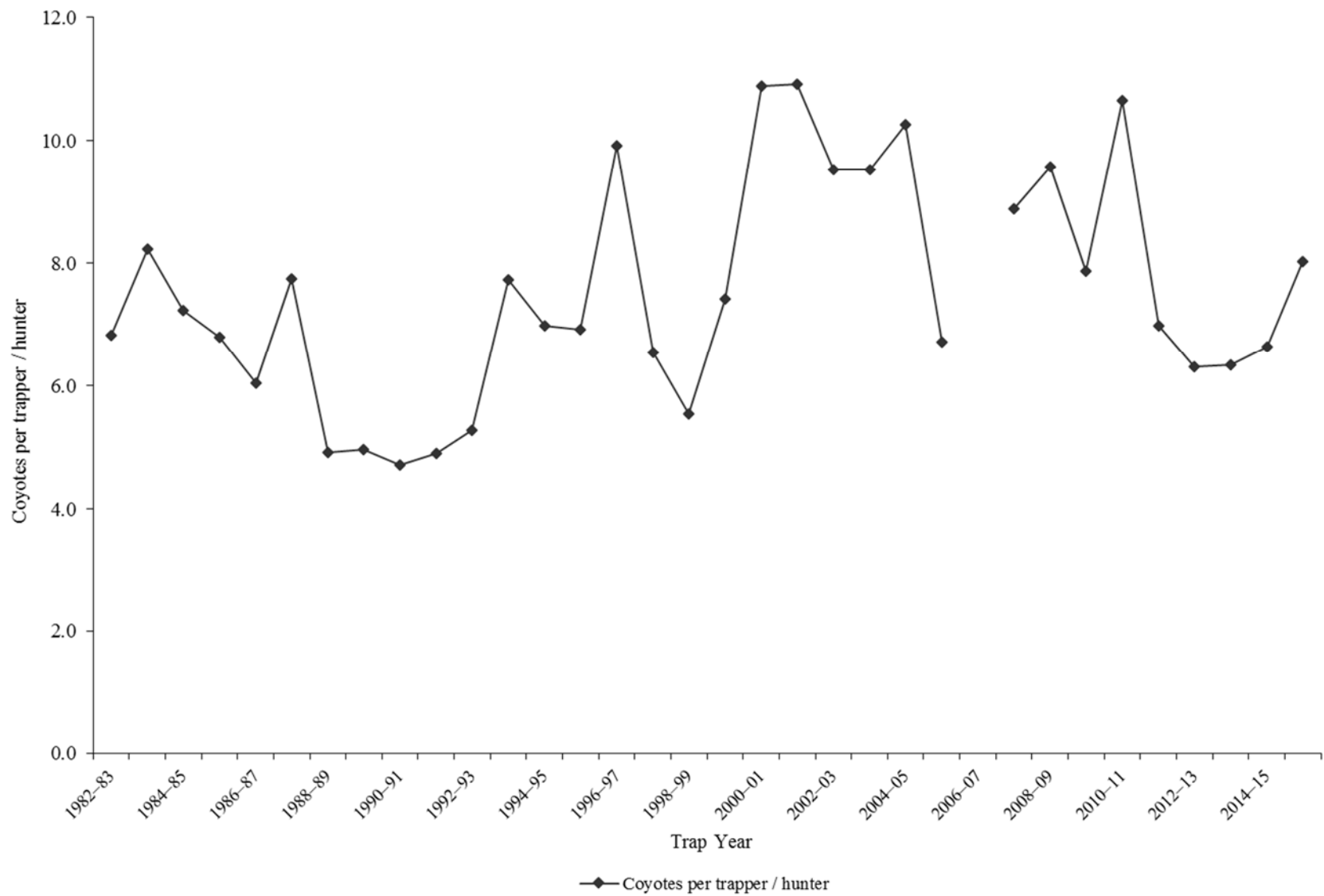
Statewide coyote harvest statistics, Utah 1982–2016.

Trap year	Trappers / hunters afield	Wildlife Services harvest	Incidental harvest	Trap harvest	Hunt harvest	Coyotes per trapper / hunter*	Pelt price (\$)
1982–83	841	4130	—	5738	—	6.8	35.42
1983–84	715	5063	—	5878	—	8.2	25.92
1984–85	828	5427	—	5991	—	7.2	32.35
1985–86	714	5045	—	4851	—	6.8	19.65
1986–87	819	4116	—	4947	—	6.0	33.64
1987–88	893	4338	—	6919	—	7.7	15.55
1988–89	652	4853	—	3200	—	4.9	8.47
1989–90	671	5168	—	3331	—	5.0	8.68
1990–91	389	4444	—	1831	—	4.7	11.41
1991–92	664	4347	—	3255	—	4.9	20.00
1992–93	695	4932	—	3666	—	5.3	15.75
1993–94	679	5827	—	5247	—	7.7	24.58
1994–95	754	3893	—	5267	—	7.0	12.51
1995–96	632	4165	—	4372	—	6.9	15.49
1996–97	405	4484	—	4017	—	9.9	18.73
1997–98	494	4169	—	3228	—	6.5	10.80
1998–99	782	3464	—	4337	—	5.5	10.80
1999–00	473	4534	—	3510	—	7.4	19.14
2000–01	456	4275	—	4966	—	10.9	14.39
2001–02	399	3874	—	4354	—	10.9	16.17
2002–03	572	3394	—	5446	—	9.5	32.62
2003–04	699	3897	—	6660	—	9.5	25.74
2004–05	699	4125	—	7173	—	10.3	20.10
2005–06	630	4820	328	1190	3039	6.7	30.45
2006–07	830	5041	—	—	—	—	26.37
2007–08	859	5618	821	4055	3582	8.9	21.74
2008–09	726	3909	1020	3963	2982	9.6	10.86
2009–10	781	3808	531	3188	2955	7.9	14.80
2010–11	736	4081	292	4356	3480	10.6	25.00
2011–12	705	3444	374	3054	1868	7.0	43.43
2012–13	881	3349	192	3269	2288	6.3	39.56
2013–14	864	2605	312	3162	2310	6.3	37.39
2014–15	971	3099	424	4118	2331	6.6	45.88
2015–16	977	3961	166	4801	3034	8.0	29.63
Average	703	4285	446	4344	2787	7.5	22.74

Prior to the 2005–06 season, harvest by hunting and trapping were not collected separately and trap harvest estimates included all harvest by both hunting and trapping.

\*Coyotes per trapper / hunter does not include Wildlife Services harvest.

Statewide coyote harvest trends, Utah 1982–2016.





Coyote trapping harvest statistics by county and ecoregion, Utah 2015–16.

County	n	Trappers afield	Trap harvest	Traps set	Trapping days	Set-days	Set-days / coyote	Coyotes / 1000 set-days	Coyotes / trapper
Beaver	9	33	92	369	1349	16787	182.2	5.5	2.8
Box Elder	14	52	608	641	2068	31650	52.0	19.2	11.8
Iron	14	52	365	874	3181	55431	151.9	6.6	7.1
Juab	9	33	70	347	844	10322	147.4	6.8	2.1
Millard	9	33	71	467	1838	30227	424.1	2.4	2.1
Tooele	13	48	243	737	2031	35174	144.6	6.9	5.1
Great Basin totals	68	251	1449	3434	11312	179592	123.9	8.1	5.8
Cache	9	33	140	453	929	14369	102.6	9.7	4.2
Davis	1	4	0	18	77	387	—	0.0	0.0
Morgan	5	18	11	162	438	5405	488.8	2.0	0.6
Piute	3	11	122	446	719	36936	303.6	3.3	11.0
Rich	4	15	608	855	1180	73431	120.7	8.3	41.3
Salt Lake	2	7	18	162	442	9732	528.0	1.9	2.5
Sanpete	4	15	4	155	711	10347	2807.0	0.4	0.3
Sevier	9	33	96	479	1880	31245	326.0	3.1	2.9
Summit	6	22	210	516	630	24403	116.1	8.6	9.5
Utah	11	41	77	332	1755	18413	237.9	4.2	1.9
Wasatch	2	7	7	22	369	958	130.0	7.7	1.0
Weber	2	7	18	122	317	7096	385.0	2.6	2.5
Rocky Mountain totals	58	214	1311	3723	9447	232723	177.3	5.6	6.1
Daggett	4	15	29	210	332	5799	196.6	5.1	2.0
Duchesne	13	48	214	509	3111	35303	165.1	6.1	4.5
Uintah	14	52	667	1172	3749	134413	201.5	5.0	12.9
Uintah Basin totals	31	114	910	1891	7192	175515	192.8	5.2	8.0
Carbon	2	7	33	81	55	590	17.8	56.3	4.5
Emery	4	15	15	114	535	4663	316.3	3.2	1.0
Garfield	9	33	258	752	2009	38275	148.3	6.7	7.8
Grand	4	15	136	627	778	32347	237.2	4.2	9.3
Kane	5	18	48	383	899	27459	573.0	1.7	2.6
San Juan	6	22	232	1253	1345	85945	370.1	2.7	10.5
Washington	9	33	122	446	1710	30419	250.1	4.0	3.7
Wayne	2	7	48	147	276	5529	115.4	8.7	6.5
Colorado Plateau totals	41	151	892	3804	7608	225228	252.5	4.0	5.9
Unknown	4	15	236	317	689	20090	85.2	11.7	16.0
Statewide totals*	161	593	4801	13170	36249	833147	173.5	5.8	8.1

\*Statewide totals for sample size and trappers afield are not totals of the columns because trappers trapped multiple counties.

Coyote hunting harvest statistics by county and ecoregion, Utah 2015–16.

County	n	Hunters afield	Hunt harvest	Hunter-days afield	Hunter-days / coyote	Coyotes / hunter
Beaver	8	29	77	391	5.0	2.6
Box Elder	20	74	830	1386	1.7	11.3
Iron	10	37	114	343	3.0	3.1
Juab	10	37	155	347	2.2	4.2
Millard	10	37	129	313	2.4	3.5
Tooele	18	66	114	457	4.0	1.7
Great Basin totals	76	280	1420	3237	2.3	5.1
Cache	14	52	177	790	4.5	3.4
Davis	2	7	0	81	—	0.0
Morgan	4	15	15	85	5.8	1.0
Piute	4	15	48	144	3.0	3.3
Rich	7	26	188	579	3.1	7.3
Salt Lake	2	7	0	33	—	0.0
Sanpete	5	18	7	289	39.2	0.4
Sevier	8	29	88	258	2.9	3.0
Summit	5	18	26	284	11.0	1.4
Utah	11	41	74	376	5.1	1.8
Wasatch	5	18	26	70	2.7	1.4
Weber	4	15	11	151	13.7	0.8
Rocky Mountain totals	71	262	660	3139	4.8	2.5
Daggett	4	15	11	118	10.7	0.8
Duchesne	10	37	26	264	10.2	0.7
Uintah	14	52	147	1146	7.8	2.9
Uintah Basin totals	28	103	184	1528	8.3	1.8
Carbon	4	15	18	203	11.0	1.3
Emery	5	18	37	66	1.8	2.0
Garfield	5	18	114	638	5.6	6.2
Grand	8	29	100	731	7.3	3.4
Kane	4	15	70	527	7.5	4.8
San Juan	8	29	143	335	2.3	4.8
Washington	10	37	203	428	2.1	5.5
Wayne	2	7	29	29	1.0	4.0
Colorado Plateau totals	46	170	714	2958	4.1	4.2
Unknown	5	18	55	184	3.3	3.0
Statewide totals*	146	538	3034	11046	3.6	5.6

\*Statewide totals for sample size and hunters afield are not totals of the columns because hunters hunted multiple counties.

## GRAY FOX

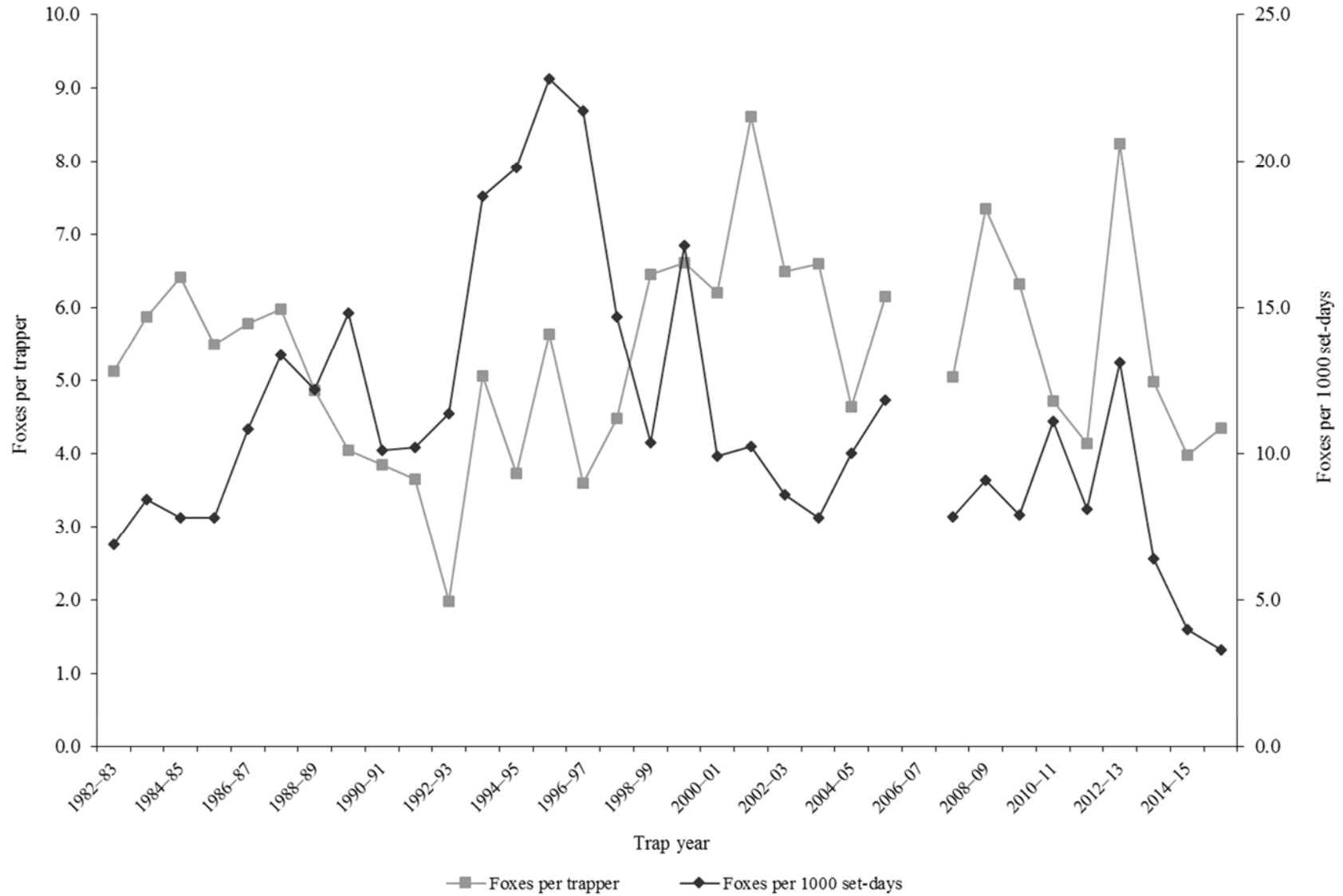
Statewide gray fox harvest statistics\*, Utah 1982–2016.

Trap year	Trappers afield	Incidental harvest	Trap harvest	Hunt harvest	Set-days / fox	Foxes / 1000 set-days	Foxes / trapper	Pelt price (\$)
1982–83	263	—	1346	—	145	6.9	5.1	27.75
1983–84	233	—	1367	—	119	8.4	5.9	25.13
1984–85	305	—	1954	—	128	7.8	6.4	24.64
1985–86	256	—	1407	—	128	7.8	5.5	15.03
1986–87	252	—	1457	—	92	10.8	5.8	25.29
1987–88	273	—	1633	—	75	13.4	6.0	21.91
1988–89	226	—	1099	—	82	12.2	4.9	13.50
1989–90	233	—	941	—	68	14.8	4.0	6.19
1990–91	65	—	250	—	99	10.1	3.8	8.24
1991–92	110	—	402	—	98	10.2	3.7	6.87
1992–93	214	—	422	—	88	11.4	2.0	7.08
1993–94	136	—	687	—	53	18.8	5.1	12.00
1994–95	207	—	771	—	51	19.8	3.7	9.62
1995–96	147	—	828	—	44	22.8	5.6	10.65
1996–97	102	—	367	—	46	21.7	3.6	11.60
1997–98	87	—	389	—	68	14.7	4.5	7.76
1998–99	135	—	870	—	96	10.4	6.4	6.96
1999–00	140	—	925	—	58	17.1	6.6	6.62
2000–01	187	—	1159	—	101	9.9	6.2	8.00
2001–02	154	—	1326	—	98	10.2	8.6	11.58
2002–03	299	—	1942	—	116	8.6	6.5	12.47
2003–04	265	—	1749	—	128	7.8	6.6	10.84
2004–05	203	—	942	—	100	10.0	4.6	13.81
2005–06	98	—	603	—	85	11.8	6.2	24.15
2006–07	252	—	—	—	—	—	—	37.25
2007–08	217	—	1093	—	127	7.9	5.0	39.19
2008–09	238	—	1747	—	110	9.1	7.3	17.07
2009–10	163	361	1031	—	126	7.9	6.3	16.56
2010–11	138	292	651	—	90	11.1	4.7	20.97
2011–12	125	485	474	43	124	8.1	4.1	23.13
2012–13	130	216	1069	3	77	13.1	8.2	31.15
2013–14	172	462	843	13	155	6.4	5.0	24.18
2014–15	123	525	490	0	249	4.0	4.0	16.16
2015–16	151	450	623	33	299	3.3	4.3	10.75
Average	185	399	996	18	107	11.2	5.3	16.59

Prior to the 2005–06 season, harvest by hunting and trapping were not collected separately and trapping harvest estimates included harvest by both hunters and trappers. Trap harvest includes incidental harvest.

\*Trappers and foxes per trapper include hunters and their harvest. Set-days per fox and foxes per 1000 set-days are based only on trapping activity, and do not include hunt harvest or hunter-days afield.

Statewide gray fox harvest trends, Utah 1982–2016.



Gray fox trapping harvest statistics by county and ecoregion, Utah 2015–16.

County	n	Trappers afield	Trap harvest	Traps set	Trapping days	Set-days	Set-days / fox	Foxes / 1000 set-days	Foxes / trapper
Beaver	1	4	15	37	221	2212	150.0	6.7	4.0
Box Elder	0	0	—	—	—	—	—	—	—
Iron	4	15	96	332	881	24145	251.9	4.0	6.5
Juab	0	0	—	—	—	—	—	—	—
Millard	1	4	0	37	221	2212	—	0.0	0.0
Tooele	0	0	—	—	—	—	—	—	—
Great Basin totals	6	22	111	405	1323	28569	258.3	3.9	5.0
Cache	1	4	0	37	332	3318	—	0.0	0.0
Davis	0	0	—	—	—	—	—	—	—
Morgan	0	0	—	—	—	—	—	—	—
Piute	0	0	—	—	—	—	—	—	—
Rich	0	0	—	—	—	—	—	—	—
Salt Lake	0	0	—	—	—	—	—	—	—
Sanpete	0	0	—	—	—	—	—	—	—
Sevier	5	18	26	63	593	2451	95.0	10.5	1.4
Summit	0	0	—	—	—	—	—	—	—
Utah	0	0	—	—	—	—	—	—	—
Wasatch	0	0	—	—	—	—	—	—	—
Weber	0	0	—	—	—	—	—	—	—
Rocky Mountain totals	6	22	26	100	925	5769	223.6	4.5	1.2
Daggett	0	0	—	—	—	—	—	—	—
Duchesne	1	4	0	18	18	92	—	0.0	0.0
Uintah	2	7	81	265	564	20673	254.9	3.9	11.0
Uintah Basin totals	3	11	81	284	582	20765	256.0	3.9	7.3
Carbon	0	0	—	—	—	—	—	—	—
Emery	0	0	—	—	—	—	—	—	—
Garfield	3	11	33	177	582	20385	614.4	1.6	3.0
Grand	3	11	33	92	457	3642	109.8	9.1	3.0
Kane	3	11	59	435	439	12423	210.6	4.7	5.3
San Juan	5	18	44	880	656	66496	1503.2	0.7	2.4
Washington	10	37	206	483	1677	27898	135.1	7.4	5.6
Wayne	1	4	15	37	18	184	12.5	80.0	4.0
Colorado Plateau totals	25	92	390	2104	3830	131028	335.3	3.0	4.2
Unknown	1	4	15	7	37	74	5.0	200.0	4.0
Statewide totals*	39	144	623	2900	6698	186204	298.9	3.3	4.3

\*Statewide totals for sample size and trappers afield are not totals of the columns because trappers trapped multiple counties.

## KIT FOX

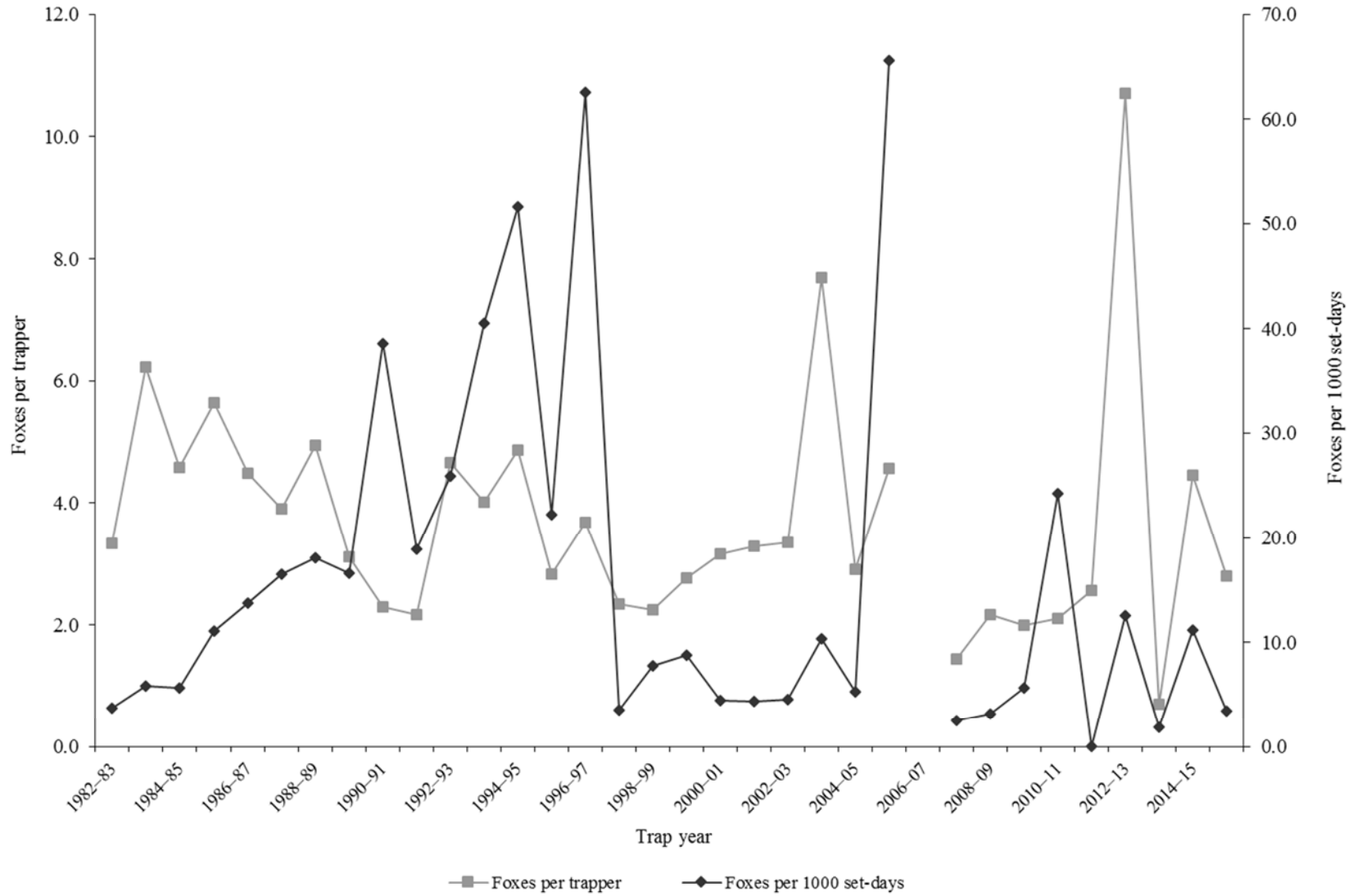
Statewide kit fox harvest statistics\*, Utah 1982–2016.

Trap year	Trappers afield	Incidental harvest	Trap harvest	Hunt harvest	Set-days / fox	Foxes / 1000 set-days	Foxes / trapper	Pelt price (\$)
1982–83	109	—	363	—	267	3.7	3.3	11.39
1983–84	112	—	698	—	171	5.8	6.2	11.99
1984–85	142	—	651	—	178	5.6	4.6	11.17
1985–86	108	—	609	—	90	11.1	5.6	7.50
1986–87	122	—	547	—	73	13.7	4.5	9.90
1987–88	138	—	538	—	61	16.5	3.9	10.69
1988–89	130	—	643	—	55	18.1	4.9	6.98
1989–90	117	—	365	—	60	16.6	3.1	3.19
1990–91	81	—	186	—	26	38.6	2.3	4.67
1991–92	86	—	187	—	53	18.9	2.2	2.78
1992–93	41	—	191	—	39	25.9	4.7	4.30
1993–94	75	—	301	—	25	40.6	4.0	4.69
1994–95	109	—	531	—	19	51.6	4.9	6.45
1995–96	77	—	218	—	45	22.2	2.8	6.25
1996–97	44	—	162	—	16	62.5	3.7	6.77
1997–98	41	—	96	—	282	3.5	2.3	3.50
1998–99	75	—	168	—	128	7.8	2.2	7.31
1999–00	66	—	183	—	114	8.8	2.8	2.90
2000–01	51	—	161	—	227	4.4	3.2	6.13
2001–02	52	—	171	—	229	4.4	3.3	10.72
2002–03	90	—	302	—	221	4.5	3.4	5.44
2003–04	83	—	638	—	97	10.4	7.7	5.38
2004–05	89	—	259	—	191	5.2	2.9	8.98
2005–06	40	—	183	—	15	65.6	4.6	10.92
2006–07	65	—	—	—	—	—	—	10.50
2007–08	27	—	39	—	392	2.6	1.4	7.87
2008–09	48	—	104	—	314	3.2	2.2	7.61
2009–10	19	13	38	—	177	5.6	2.0	9.47
2010–11	20	3	42	—	41	24.2	2.1	12.68
2011–12	18	64	0	46	—	0.0	2.6	14.49
2012–13	31	41	315	17	80	12.6	10.7	14.37
2013–14	10	7	7	0	515	1.9	0.7	14.32
2014–15	22	47	95	3	90	11.2	4.5	7.13
2015–16	29	18	37	44	296	3.4	2.8	6.54
Average	70	28	274	22	143	16.1	3.7	8.09

Prior to the 2005–06 season, harvest by hunting and trapping were not collected separately and trapping harvest estimates included harvest by both hunters and trappers. Trap harvest includes incidental harvest.

\*Trappers and foxes per trapper include hunters and their harvest. Set-days per fox and foxes per 1000 set-days are based only on trapping activity, and do not include hunt harvest or hunter-days afield.

Statewide kit fox harvest trends, Utah 1982–2016.



# MARTEN

Statewide marten harvest statistics, Utah 1982–1999.

Trap year	Trappers afield	Trap / hunt harvest	Set-days	Set-days / marten	Martens / 1000 set-days	Martens / trapper	Pelt price (\$)
1982–83	1	1	6	6	166.7	1.0	10.00
1983–84	9	84	4704	56	17.9	9.5	20.00
1984–85	9	12	6516	543	1.8	1.4	24.00
1985–86	10	121	7381	61	16.4	11.6	23.00
1986–87	11	22	8558	389	2.6	2.0	25.68
1987–88	10	50	9750	195	5.1	5.0	40.00
1988–89	6	10	1210	121	8.3	1.7	31.00
1989–90	—	—	—	—	—	—	—
1990–91	—	—	—	—	—	—	—
1991–92	—	—	—	—	—	—	—
1992–93	—	—	—	—	—	—	—
1993–94	—	—	—	—	—	—	—
1994–95	—	—	—	—	—	—	—
1995–96	—	—	—	—	—	—	—
1996–97	13	2	—	—	—	0.2	20.00
1997–98	—	—	—	—	—	—	11.00
1998–99	12	6	1228	205	4.9	0.5	7.11
Average	9	34	4919	197	28.0	3.6	21.18

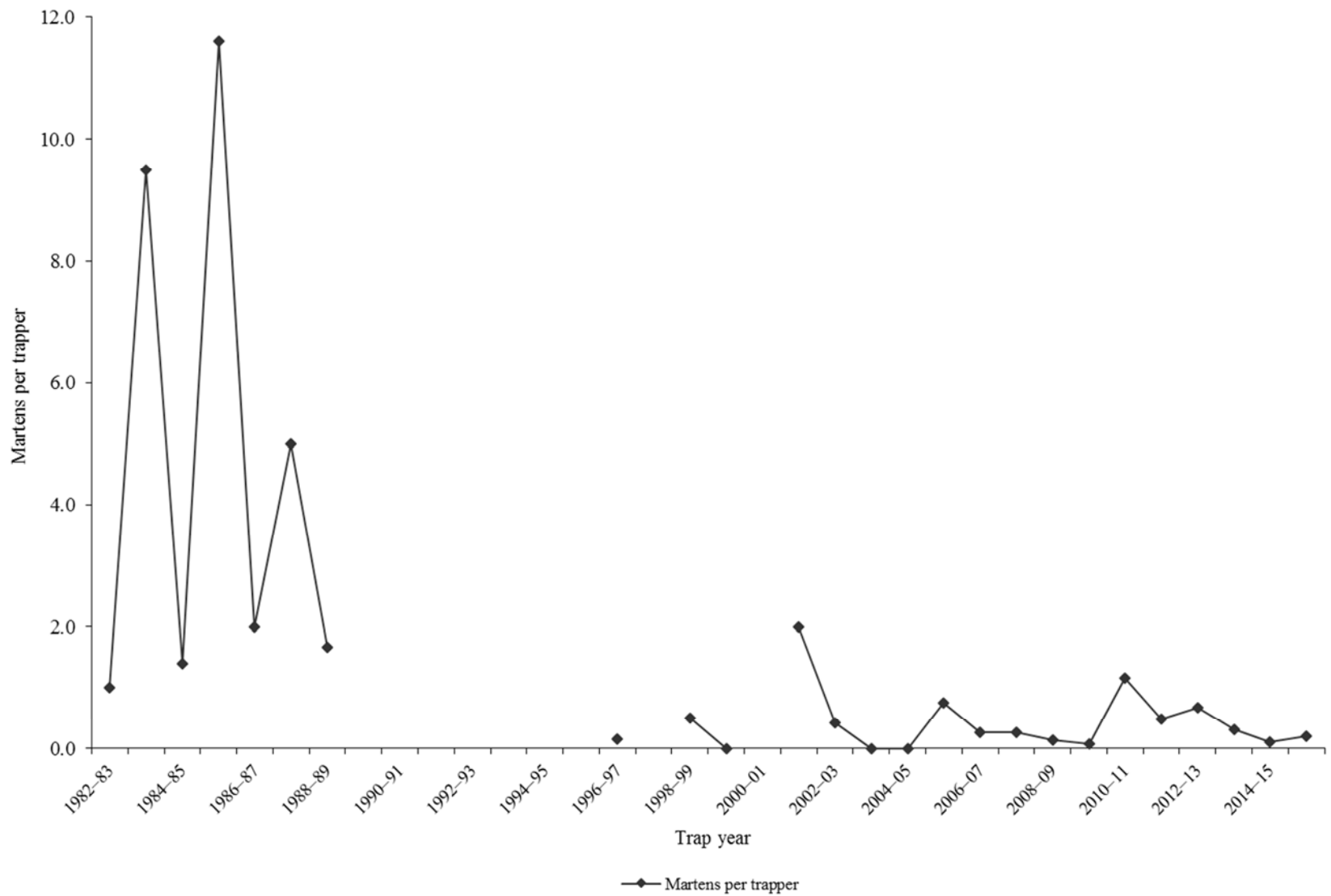


Statewide marten harvest statistics, Utah 1999–2016.

Trap year	Permits sold	Successful trappers	Male harvest	Female harvest	Unknown harvest	Total harvest	Success rate (%)*	Martens / trapper*
1999–00	5	0	0	0	0	0	0.0	0.0
2000–01	—	1	3	3	0	6	—	—
2001–02	11	2	16	6	0	22	18.2	2.0
2002–03	12	1	3	2	0	5	8.3	0.4
2003–04	18	0	0	0	0	0	0.0	0.0
2004–05	12	0	0	0	0	0	0.0	0.0
2005–06	16	2	7	4	1	12	12.5	0.8
2006–07	26	3	6	1	0	7	11.5	0.3
2007–08	22	4	7	14	0	21	18.2	1.0
2008–09	28	1	2	2	0	4	3.6	0.1
2009–10	25	1	2	0	0	2	4.0	0.1
2010–11	31	2	24	12	0	36	6.5	1.2
2011–12	29	3	7	3	4	14	10.3	0.5
2012–13	39	3	15	5	6	26	7.7	0.7
2013–14	51	6	13	3	0	16	11.8	0.3
2014–15	202	2	16	6	0	22	1.0	0.1
2015–16	46	1	5	4	0	9	2.2	0.2
Average	36	2	8	3	1	12	7.2	0.5

\*Assumption: Every person who possessed a marten permit trapped or hunted.

Statewide marten harvest trends, Utah 1982–2016.



# MINK

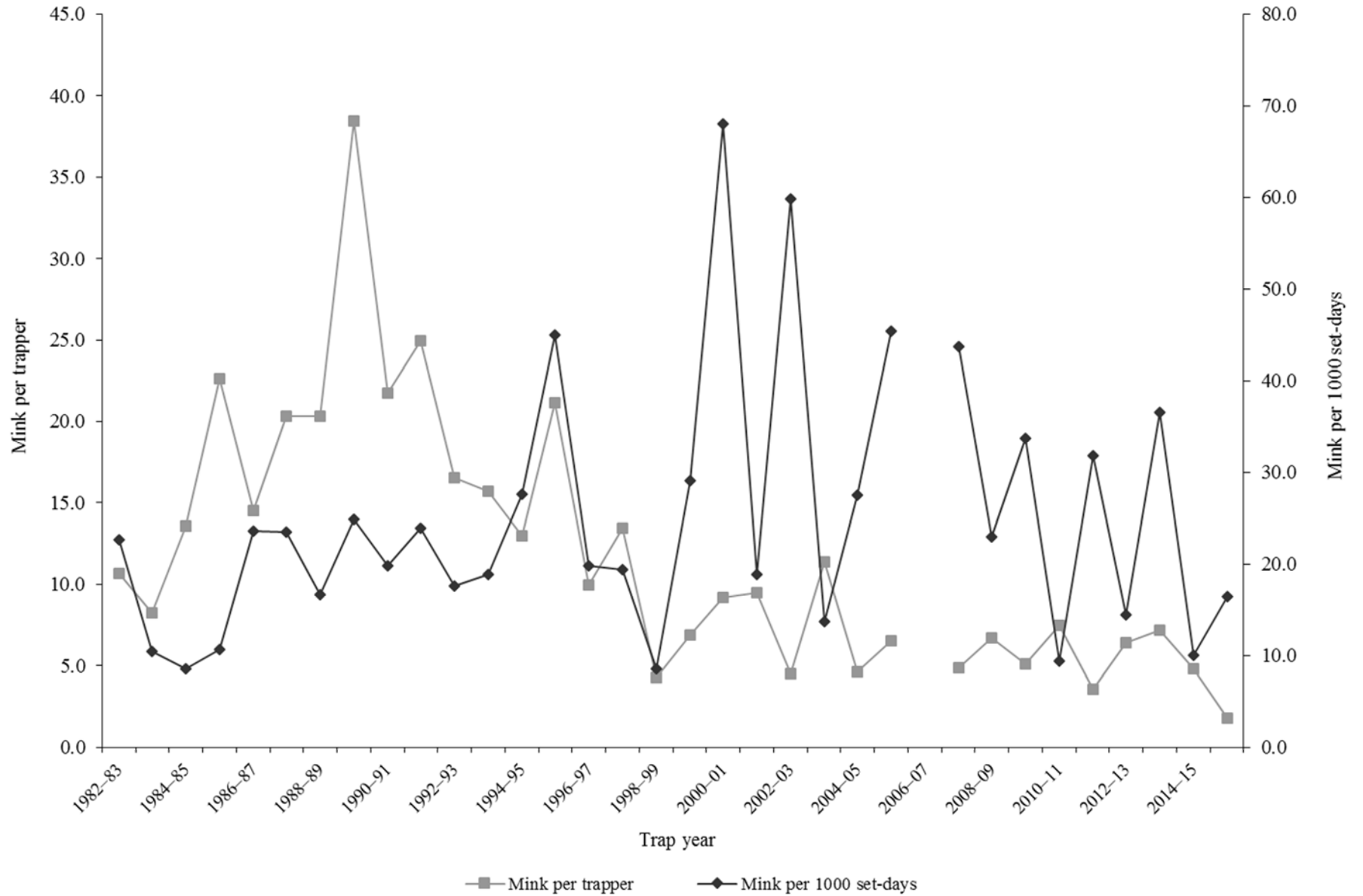
Statewide mink harvest statistics\*, Utah 1982–2016.

Trap year	Trappers afield	Incidental harvest	Trap harvest	Hunt harvest	Set-days / mink	Minks / 1000 set-days	Minks / trapper	Pelt price (\$)
1982–83	38	—	405	—	44	22.7	10.7	10.85
1983–84	46	—	379	—	95	10.5	8.2	9.13
1984–85	40	—	542	—	117	8.6	13.6	10.27
1985–86	37	—	837	—	94	10.7	22.6	6.00
1986–87	57	—	828	—	42	23.6	14.5	10.63
1987–88	51	—	1037	—	42	23.6	20.3	12.25
1988–89	42	—	854	—	60	16.6	20.3	10.69
1989–90	29	—	1114	—	40	24.8	38.4	6.30
1990–91	25	—	543	—	50	19.8	21.7	6.33
1991–92	29	—	723	—	42	23.9	24.9	6.81
1992–93	23	—	380	—	57	17.6	16.5	7.50
1993–94	30	—	472	—	53	18.9	15.7	8.41
1994–95	27	—	350	—	36	27.6	13.0	8.38
1995–96	25	—	529	—	22	45.0	21.2	10.40
1996–97	27	—	269	—	50	19.8	10.0	10.95
1997–98	25	—	337	—	51	19.4	13.5	5.81
1998–99	81	—	345	—	116	8.6	4.3	7.11
1999–00	61	—	419	—	34	29.1	6.9	6.07
2000–01	51	—	468	—	15	68.1	9.2	4.92
2001–02	30	—	284	—	53	18.8	9.5	5.20
2002–03	59	—	268	—	17	59.8	4.5	2.07
2003–04	59	—	673	—	73	13.7	11.4	8.00
2004–05	68	—	317	—	36	27.5	4.7	8.98
2005–06	34	—	222	—	22	45.4	6.5	9.97
2006–07	65	—	—	—	—	—	—	7.94
2007–08	38	—	186	—	23	43.7	4.9	9.33
2008–09	36	—	242	—	44	22.9	6.7	5.96
2009–10	66	57	338	—	30	33.7	5.1	8.00
2010–11	65	151	485	—	107	9.4	7.5	11.27
2011–12	43	61	153	7	31	31.8	3.6	15.08
2012–13	110	147	706	14	70	14.4	6.4	19.18
2013–14	115	186	826	0	27	36.6	7.2	16.21
2014–15	54	82	259	0	100	10.0	4.8	8.57
2015–16	74	55	133	0	61	16.4	1.8	4.22
Average	49	106	483	4	53	24.9	11.8	8.79

Prior to the 2005–06 season, harvest by hunting and trapping were not collected separately and trapping harvest estimates included harvest by both hunters and trappers. Trap harvest includes incidental harvest.

\*Trappers and minks per trapper include hunters and their harvest. Set-days per mink and minks per 1000 set-days are based only on trapping activity, and do not include hunt harvest or hunter-days afield.

Statewide mink harvest trends, Utah 1982–2016.



Mink harvest statistics by county and ecoregion, Utah 2015–16.

County	n	Trappers afield	Trap harvest	Traps set	Trapping days	Set-days	Set-days / mink	Mink / 1000 set-days	Mink / trapper
Beaver	0	0	—	—	—	—	—	—	—
Box Elder	1	4	0	22	111	664	—	0.0	0.0
Iron	0	0	—	—	—	—	—	—	—
Juab	1	4	4	4	4	4	1.0	1000.0	1.0
Millard	0	0	—	—	—	—	—	—	—
Tooele	0	0	—	—	—	—	—	—	—
Great Basin totals	2	7	4	26	114	667	181.0	5.5	0.5
Cache	2	7	0	52	299	1371	—	0.0	0.0
Davis	0	0	—	—	—	—	—	—	—
Morgan	4	15	74	92	439	2706	36.7	27.2	5.0
Piute	0	0	—	—	—	—	—	—	—
Rich	0	0	—	—	—	—	—	—	—
Salt Lake	0	0	—	—	—	—	—	—	—
Sanpete	0	0	—	—	—	—	—	—	—
Sevier	0	0	—	—	—	—	—	—	—
Summit	0	0	—	—	—	—	—	—	—
Utah	3	11	22	22	81	236	10.7	93.8	2.0
Wasatch	1	4	0	11	15	44	—	0.0	0.0
Weber	4	15	26	96	206	1674	64.9	15.4	1.8
Rocky Mountain totals	14	52	122	273	1040	6031	49.6	20.2	2.4
Daggett	0	0	—	—	—	—	—	—	—
Duchesne	3	11	4	48	221	1161	315.0	3.2	0.3
Uintah	1	4	4	11	77	232	63.0	15.9	1.0
Uintah Basin totals	4	15	8	59	299	1393	189.0	5.3	0.5
Carbon	0	0	—	—	—	—	—	—	—
Emery	0	0	—	—	—	—	—	—	—
Garfield	0	0	—	—	—	—	—	—	—
Grand	0	0	—	—	—	—	—	—	—
Kane	0	0	—	—	—	—	—	—	—
San Juan	0	0	—	—	—	—	—	—	—
Washington	0	0	—	—	—	—	—	—	—
Wayne	0	0	—	—	—	—	—	—	—
Colorado Plateau totals	0	0	—	—	—	—	—	—	—
Unknown	0	0	—	—	—	—	—	—	—
Statewide totals*	20	74	133	358	1452	8091	61.0	16.4	1.8

\*Statewide totals for sample size and trappers afield are not totals of the columns because trappers trapped multiple counties.

# MUSKRAT

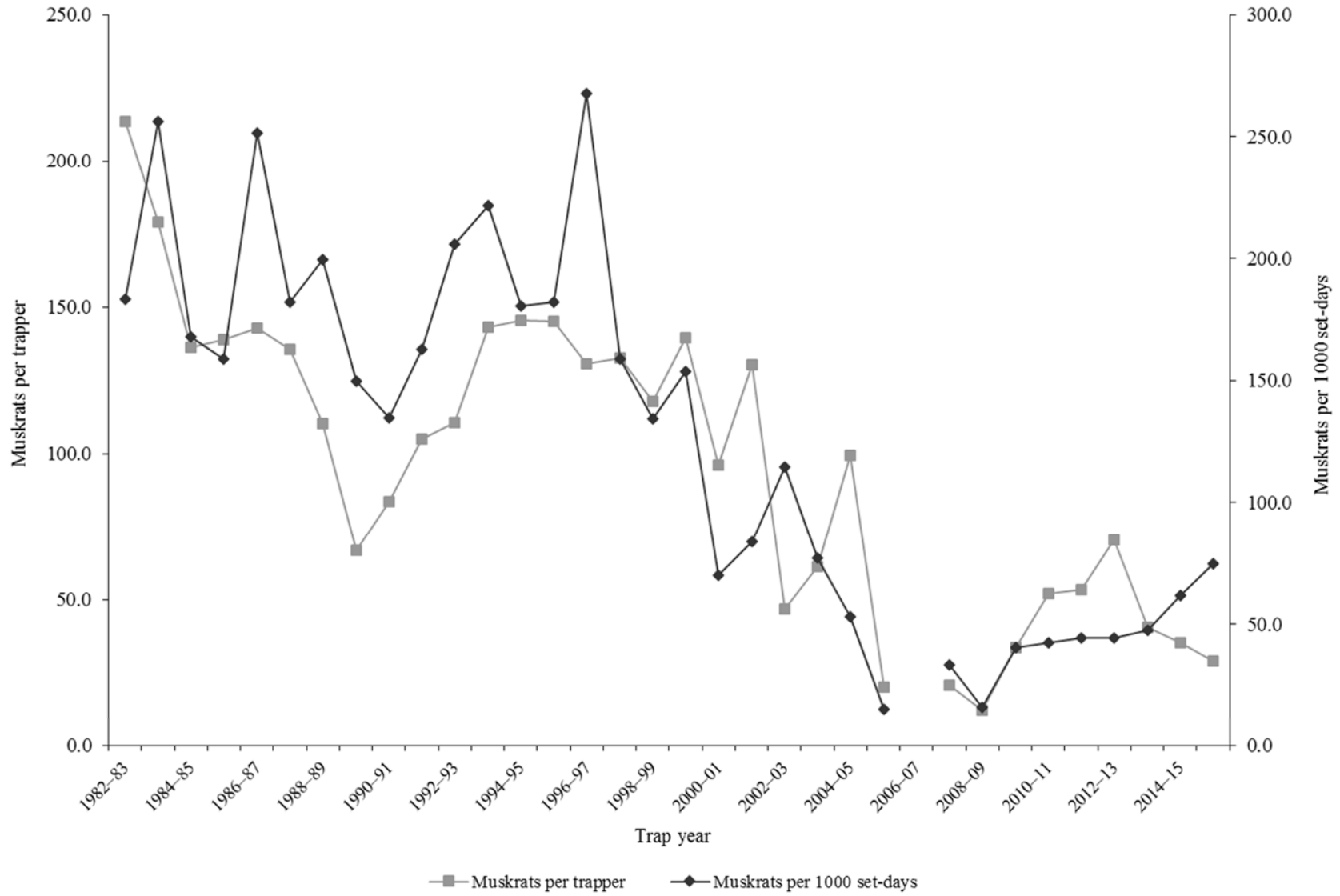
Statewide muskrat harvest statistics\*, Utah 1982–2016.

Trap year	Trappers afield	Incidental harvest	Trap harvest	Hunt harvest	Set-days / muskrat	Musk rats / 1000 set-days	Musk rats / trapper	Pelt price (\$)
1982–83	258	—	55137	—	5	183.1	213.7	2.16
1983–84	309	—	55298	—	4	256.2	179.0	2.46
1984–85	400	—	54526	—	6	168.1	136.3	2.45
1985–86	282	—	39195	—	6	158.9	139.0	1.86
1986–87	416	—	59368	—	4	251.7	142.7	2.66
1987–88	432	—	58560	—	5	182.2	135.6	2.46
1988–89	303	—	33400	—	5	199.4	110.2	1.40
1989–90	253	—	16898	—	7	149.6	66.8	0.89
1990–91	85	—	7102	—	7	134.6	83.6	0.91
1991–92	186	—	19547	—	6	162.7	105.1	1.60
1992–93	105	—	11623	—	5	205.9	110.7	1.18
1993–94	157	—	22488	—	5	221.5	143.2	1.89
1994–95	195	—	28369	—	6	180.5	145.5	1.74
1995–96	181	—	26260	—	5	182.2	145.1	2.09
1996–97	179	—	23371	—	4	267.9	130.6	3.59
1997–98	203	—	26907	—	6	158.7	132.5	2.01
1998–99	186	—	21895	—	7	134.1	117.7	1.73
1999–00	151	—	21086	—	7	153.7	139.6	1.00
2000–01	108	—	10376	—	14	69.8	96.1	1.58
2001–02	115	—	14979	—	12	84.0	130.3	2.60
2002–03	135	—	6334	—	9	114.6	46.9	1.59
2003–04	176	—	10777	—	13	77.0	61.2	1.57
2004–05	151	—	15016	—	19	53.1	99.4	1.57
2005–06	41	0	824	—	66	15.3	20.1	3.97
2006–07	81	—	—	—	—	—	—	3.31
2007–08	80	110	1665	—	30	33.3	20.9	3.04
2008–09	98	137	1198	—	63	15.9	12.2	2.49
2009–10	158	164	5341	—	25	40.5	33.8	4.93
2010–11	141	337	7361	—	24	42.2	52.2	5.40
2011–12	150	281	7985	—	23	44.4	53.2	7.28
2012–13	192	117	13534	3	23	44.2	70.5	8.11
2013–14	213	159	8605	0	21	47.5	40.4	8.73
2014–15	168	180	5902	9	16	61.8	35.1	3.76
2015–16	210	41	6130	4	13	74.9	29.2	1.89
Average	191	153	21123	4	14	126.4	96.3	2.82

Prior to the 2005–06 season, harvest by hunting and trapping were not collected separately and trapping harvest estimates included harvest by both hunters and trappers. Trap harvest includes incidental harvest.

\*Trappers and muskrat per trapper include hunters and their harvest. Set-days per muskrat and muskrat per 1000 set-days are based only on trapping activity, and do not include hunt harvest or hunter-days afield.

Statewide muskrat harvest trends, Utah 1982–2016.



Muskrat harvest statistics by county and ecoregion, Utah 2015–16.

County	n	Trappers afield	Trap harvest	Traps set	Trapping days	Set-days	Set-days / muskrat	Musk rats / 1000 set-days	Musk rats / trapper
Beaver	0	0	—	—	—	—	—	—	—
Box Elder	7	26	1345	656	402	16773	12.5	80.2	52.1
Iron	0	0	—	—	—	—	—	—	—
Juab	0	0	—	—	—	—	—	—	—
Millard	0	0	—	—	—	—	—	—	—
Tooele	0	0	—	—	—	—	—	—	—
Great Basin totals	7	26	1345	656	402	16773	12.5	80.2	52.1
Cache	13	48	1622	1194	781	14900	9.2	108.9	33.8
Davis	0	0	—	—	—	—	—	—	—
Morgan	5	18	332	188	911	6071	18.3	54.6	18.0
Piute	0	0	—	—	—	—	—	—	—
Rich	1	4	37	18	11	55	1.5	666.7	10.0
Salt Lake	1	4	11	15	22	88	8.0	125.0	3.0
Sanpete	1	4	15	37	221	2212	150.0	6.7	4.0
Sevier	1	4	37	22	11	66	1.8	555.6	10.0
Summit	3	11	52	55	151	730	14.1	70.7	4.7
Utah	5	18	487	225	402	4744	9.8	102.6	26.4
Wasatch	3	11	111	140	531	13683	123.7	8.1	10.0
Weber	7	26	1873	623	464	19209	10.3	97.5	72.6
Rocky Mountain totals	40	147	4577	2518	3506	61760	13.5	74.1	31.0
Daggett	0	0	—	—	—	—	—	—	—
Duchesne	1	4	4	15	0	0	0.0	—	1.0
Uintah	5	18	48	59	221	523	10.9	91.5	2.6
Uintah Basin totals	6	22	52	74	221	523	10.1	98.6	2.3
Carbon	1	4	37	22	55	332	9.0	111.1	10.0
Emery	4	15	122	88	462	2497	20.5	48.7	8.3
Garfield	0	0	—	—	—	—	—	—	—
Grand	0	0	—	—	—	—	—	—	—
Kane	0	0	—	—	—	—	—	—	—
San Juan	0	0	—	—	—	—	—	—	—
Washington	0	0	—	—	—	—	—	—	—
Wayne	0	0	—	—	—	—	—	—	—
Colorado Plateau totals	5	18	159	111	517	2829	17.8	56.0	8.6
Unknown	0	0	—	—	—	—	—	—	—
Statewide totals*	56	206	6130	3358	4646	81884	13.4	74.9	29.7

\*Statewide totals for sample size and trappers afield are not totals of the columns because trappers trapped multiple counties.



## RACCOON

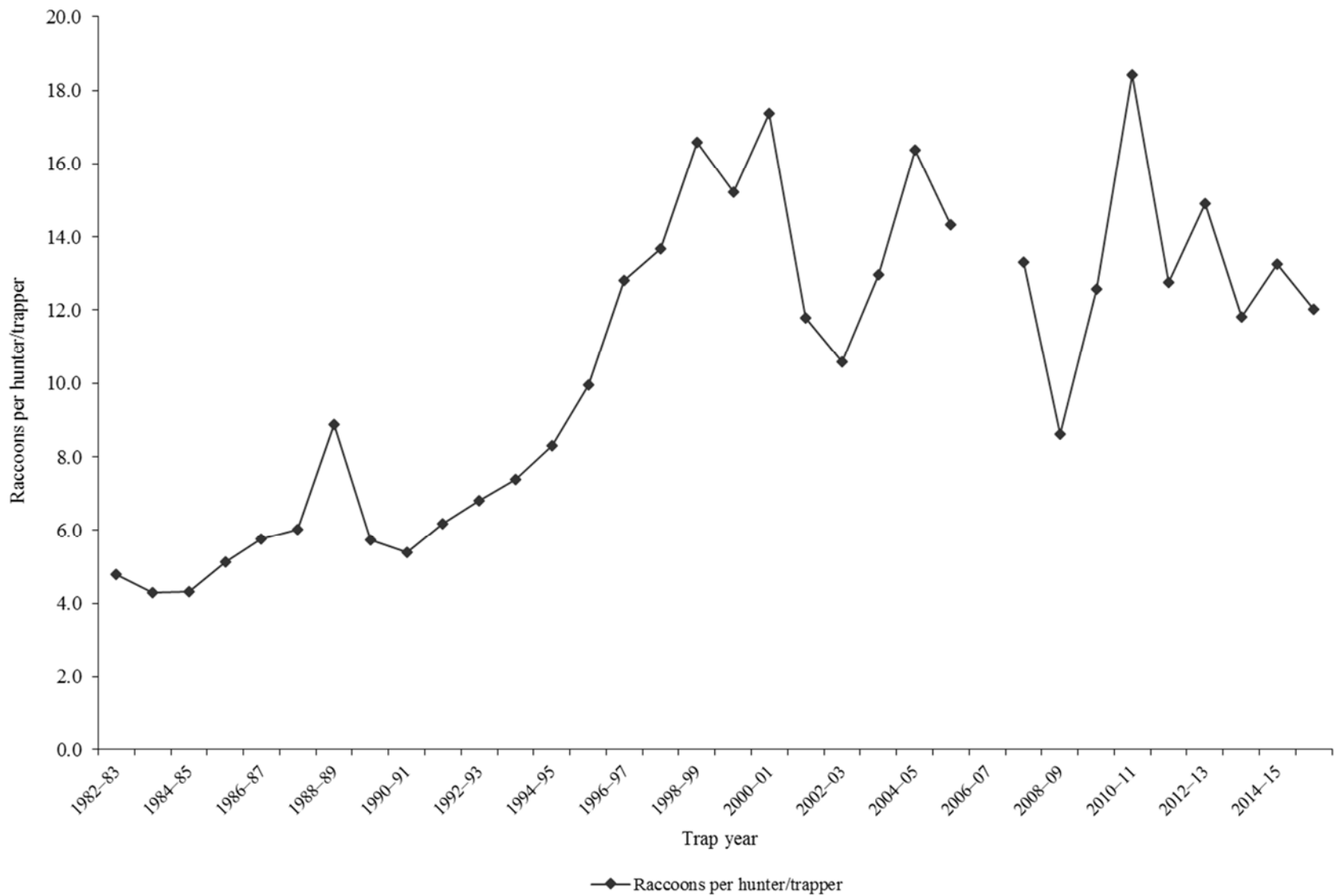
Statewide raccoon harvest statistics\*, Utah 1982–2016.

Trap year	Trappers afield	Incidental harvest	Trap harvest	Hunt harvest	Set-days / raccoon	Raccoons / 1000 set-days	Raccoons / trapper	Pelt price (\$)
1982–83	178	—	853	—	19	51.3	4.8	12.34
1983–84	192	—	822	—	40	25.0	4.3	13.51
1984–85	329	—	1417	—	47	21.2	4.3	12.85
1985–86	290	—	1485	—	49	20.5	5.1	9.26
1986–87	418	—	2412	—	39	25.5	5.8	12.62
1987–88	434	—	2619	—	41	24.3	6.0	9.41
1988–89	350	—	3104	—	14	71.9	8.9	7.71
1989–90	430	—	2464	—	17	58.8	5.7	5.78
1990–91	214	—	1156	—	18	54.3	5.4	4.65
1991–92	368	—	2273	—	20	50.3	6.2	4.72
1992–93	272	—	1851	—	17	59.5	6.8	2.57
1993–94	306	—	2259	—	19	53.4	7.4	6.98
1994–95	364	—	3025	—	23	43.8	8.3	6.06
1995–96	293	—	2914	—	10	100.1	9.9	8.07
1996–97	330	—	4228	—	13	77.2	12.8	13.35
1997–98	365	—	4989	—	29	34.5	13.7	9.98
1998–99	468	—	7765	—	22	45.5	16.6	4.95
1999–00	349	—	5317	—	34	29.8	15.2	5.67
2000–01	327	—	5678	—	29	34.8	17.4	5.16
2001–02	321	—	3785	—	32	31.2	11.8	8.04
2002–03	378	—	4001	—	26	38.4	10.6	5.62
2003–04	434	—	5634	—	37	26.8	13.0	10.63
2004–05	391	—	6405	—	35	28.4	16.4	6.54
2005–06	230	—	1761	1537	246	4.1	14.3	9.83
2006–07	325	—	—	—	—	—	—	7.18
2007–08	300	—	2414	1576	50	19.8	13.3	10.85
2008–09	275	—	1639	729	58	17.4	8.6	6.21
2009–10	349	633	3439	946	39	25.9	12.6	7.09
2010–11	292	571	3958	1417	28	36.0	18.4	8.17
2011–12	289	453	3168	520	34	29.6	12.8	7.77
2012–13	377	614	4048	1577	35	28.4	14.9	14.08
2013–14	374	1066	4031	385	48	21.0	11.8	9.50
2014–15	354	743	4046	648	49	20.4	13.3	5.46
2015–16	343	627	3631	490	44	22.7	12.0	4.10
Average	333	672	3291	983	38	37.3	10.6	8.14

Prior to the 2005–06 season, harvest by hunting and trapping were not collected separately and trapping harvest estimates included all harvest by hunters and trappers.

\*Trappers and raccoons per trapper include hunters and their harvest. Set-days per raccoon and raccoons per 1000 set-days are based only on trapping activity, and do not include hunt harvest or hunter-days afield.

Statewide raccoon harvest trends, Utah 1982–2016.



Raccoon trapping harvest statistics by county and ecoregion, Utah 2015–16.

County	n	Trappers afield	Trap harvest	Traps set	Trapping days	Set-days	Set-days / raccoon	Raccoons / 1000 set-days	Raccoons / trapper
Beaver	0	0	—	—	—	—	—	—	—
Box Elder	9	33	420	376	1040	15611	37.1	26.9	12.7
Iron	1	4	7	44	553	6635	900.0	1.1	2.0
Juab	0	0	—	—	—	—	—	—	—
Millard	1	4	22	37	111	1106	50.0	20.0	6.0
Tooele	2	7	15	15	103	206	14.0	71.4	2.0
Great Basin totals	13	48	464	472	1806	23559	50.7	19.7	9.7
Cache	7	26	225	273	2182	16197	72.0	13.9	8.7
Davis	4	15	37	85	170	605	16.4	61.0	2.5
Morgan	2	7	129	66	350	2949	22.9	43.8	17.5
Piute	1	4	11	22	29	177	16.0	62.5	3.0
Rich	2	7	52	37	258	2027	39.3	25.5	7.0
Salt Lake	1	4	4	4	15	15	4.0	250.0	1.0
Sanpete	3	11	96	77	995	5474	57.1	17.5	8.7
Sevier	2	7	184	37	1327	0	0.0	—	25.0
Summit	2	7	66	26	1382	8110	122.2	8.2	9.0
Utah	10	37	737	288	2260	26021	35.3	28.3	20.0
Wasatch	2	7	7	44	203	1475	200.0	5.0	1.0
Weber	7	26	660	402	804	13212	20.0	49.9	25.6
Rocky Mountain totals	43	159	2208	1360	9975	76262	34.5	29.0	13.9
Daggett	0	0	—	—	—	—	—	—	—
Duchesne	8	29	641	313	1272	25589	39.9	25.1	21.8
Uintah	9	33	151	147	490	2105	13.9	71.8	4.6
Uintah Basin totals	17	63	792	461	1763	27694	34.9	28.6	12.6
Carbon	0	0	—	—	—	—	—	—	—
Emery	2	7	44	44	147	885	20.0	50.0	6.0
Garfield	0	0	—	—	—	—	—	—	—
Grand	2	7	63	29	221	885	14.1	70.8	8.5
Kane	0	0	—	—	—	—	—	—	—
San Juan	1	4	22	328	328	29199	1320.2	0.8	6.0
Washington	4	15	37	66	487	1651	44.8	22.3	2.5
Wayne	0	0	—	—	—	—	—	—	—
Colorado Plateau totals	9	33	166	468	1183	32620	196.6	5.1	5.0
Unknown	0	0	—	—	—	—	—	—	—
Statewide totals*	78	288	3631	2761	14727	160134	44.1	22.7	12.6

\*Statewide totals for sample size and trappers afield are not totals of the columns because trappers trapped multiple counties.

## RED FOX

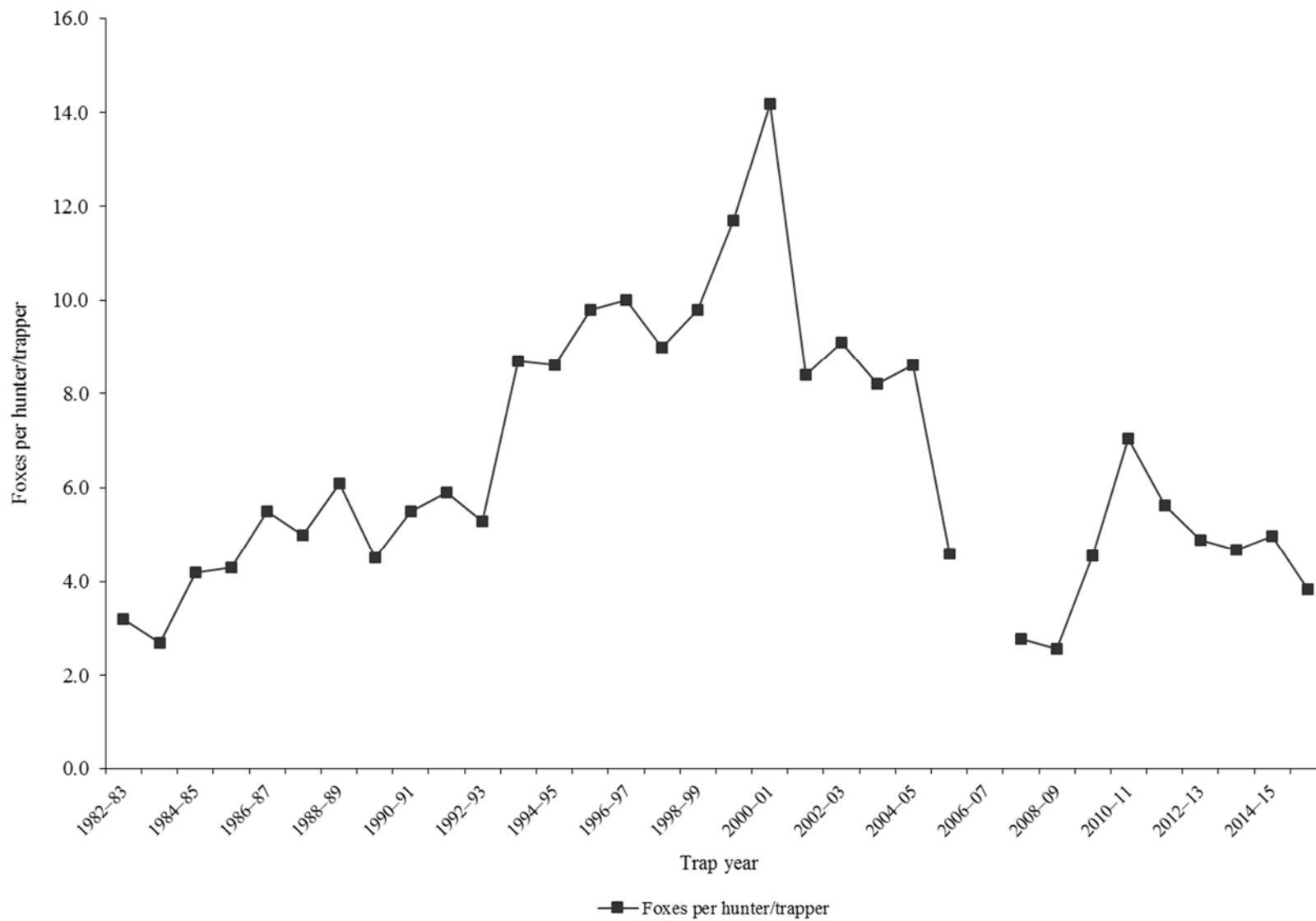
Statewide red fox harvest statistics\*, Utah 1982–2016.

Trap year	Trappers afield	Incidental harvest	Trap harvest	Hunt harvest	Set-days / fox	Foxes / 1000 set-days	Foxes / trapper	Pelt price (\$)
1982–83	172	—	544	—	128	7.8	3.2	30.13
1983–84	191	—	523	—	134	7.5	2.7	28.43
1984–85	298	—	1244	—	116	8.7	4.2	25.90
1985–86	316	—	1351	—	74	13.6	4.3	15.83
1986–87	444	—	2446	—	59	17.1	5.5	20.14
1987–88	506	—	2545	—	50	20.2	5.0	13.66
1988–89	398	—	2446	—	34	29.2	6.1	6.57
1989–90	496	—	2250	—	40	25.3	4.5	7.80
1990–91	365	—	1993	—	25	40.0	5.5	6.34
1991–92	623	—	3663	—	28	35.4	5.9	10.70
1992–93	594	—	3126	—	27	37.5	5.3	10.12
1993–94	578	—	5055	—	26	38.9	8.7	14.74
1994–95	509	—	4378	—	36	28.0	8.6	15.34
1995–96	421	—	4115	—	26	38.7	9.8	18.08
1996–97	427	—	4274	—	27	36.8	10.0	17.48
1997–98	414	—	3744	—	32	31.5	9.0	11.31
1998–99	570	—	5600	—	34	29.5	9.8	8.95
1999–00	420	—	4900	—	44	22.7	11.7	14.19
2000–01	375	—	5330	—	52	19.1	14.2	16.92
2001–02	379	—	3192	—	59	16.9	8.4	24.48
2002–03	482	—	4399	—	76	13.1	9.1	28.19
2003–04	568	—	4639	—	71	14.1	8.2	18.07
2004–05	545	—	4674	—	102	9.8	8.6	18.86
2005–06	406	—	1874	—	196	5.1	4.6	24.35
2006–07	496	—	—	—	—	—	—	20.49
2007–08	407	—	1130	—	174	5.7	2.8	21.42
2008–09	339	—	872	—	261	3.8	2.6	17.98
2009–10	461	557	1908	192	102	9.8	4.6	16.32
2010–11	376	216	2435	213	84	12.0	7.0	22.62
2011–12	335	388	1757	128	84	11.9	5.6	42.47
2012–13	380	195	1690	171	83	12.1	4.9	43.50
2013–14	428	519	1934	64	154	6.5	4.7	40.39
2014–15	361	478	1714	79	161	6.2	5.0	24.30
2015–16	361	494	1183	203	180	5.6	3.8	15.37
Average	425	407	2816	150	84	18.8	6.5	19.75

Prior to the 2005–06 season, harvest by hunting and trapping were not collected separately and trapping harvest estimates included harvest by both hunters and trappers. Trap harvest includes incidental harvest.

\*Trappers and foxes per trapper include hunters and their harvest. Set-days per fox and foxes per 1000 set-days are based only on trapping activity, and do not include hunt harvest or hunter-days afield.

Statewide red fox harvest trends, Utah 1982–2016.



Red fox trapping harvest statistics by county and ecoregion, Utah 2015–16.

County	n	Trappers afield	Trap harvest	Traps set	Trapping days	Set-days	Set-days / fox	Foxes / 1000 set-days	Foxes / trapper
Beaver	2	7	29	15	258	700	23.8	42.1	4.0
Box Elder	3	11	96	170	516	8700	90.8	11.0	8.7
Iron	3	11	214	247	848	30135	140.9	7.1	19.3
Juab	3	11	15	66	258	1622	110.0	9.1	1.3
Millard	2	7	11	48	144	793	71.7	14.0	1.5
Tooele	1	4	0	11	221	664	—	0.0	0.0
Great Basin totals	14	52	365	557	2245	42613	116.8	8.6	7.1
Cache	4	15	4	103	516	4497	1220.0	0.8	0.3
Davis	2	7	70	111	369	5529	78.9	12.7	9.5
Morgan	3	11	44	88	343	3251	73.5	13.6	4.0
Piute	1	4	7	74	328	6562	890.0	1.1	2.0
Rich	0	0	—	—	—	—	—	—	—
Salt Lake	2	7	4	114	247	6661	1807.0	0.6	0.5
Sanpete	3	11	18	26	571	1161	63.0	15.9	1.7
Sevier	6	22	77	155	1084	7719	99.7	10.0	3.5
Summit	2	7	33	129	243	6547	197.3	5.1	4.5
Utah	11	41	66	188	1316	6484	97.7	10.2	1.6
Wasatch	2	7	7	15	225	885	120.0	8.3	1.0
Weber	4	15	66	125	254	3089	46.6	21.5	4.5
Rocky Mountain totals	40	147	396	1128	5496	52386	131.6	7.6	2.7
Daggett	1	4	74	74	166	3318	45.0	22.2	20.0
Duchesne	5	18	70	59	350	1327	18.9	52.8	3.8
Uintah	11	41	122	564	1898	32749	269.2	3.7	3.0
Uintah Basin totals	17	63	266	697	2415	37394	140.9	7.1	4.2
Carbon	3	11	18	44	77	409	22.2	45.0	1.7
Emery	2	7	29	125	203	4350	147.5	6.8	4.0
Garfield	2	7	11	33	225	1047	94.7	10.6	1.5
Grand	2	7	15	74	383	3273	222.0	4.5	2.0
Kane	1	4	4	177	166	7962	2160.0	0.5	1.0
San Juan	3	11	26	708	608	53304	2065.7	0.5	2.3
Washington	2	7	0	70	225	1961	—	0.0	0.0
Wayne	1	4	4	18	18	92	25.0	40.0	1.0
Colorado Plateau totals	16	59	107	1250	1906	72398	677.2	1.5	1.8
Unknown	2	7	48	136	442	8184	170.8	5.9	6.5
Statewide totals*	83	306	1183	3767	12504	212975	180.0	5.6	3.9

\*Statewide totals for sample size and trappers afield are not totals of the columns because trappers trapped multiple counties.

Red fox hunting harvest statistics by county and ecoregion, Utah 2015–16.

County	n	Hunters afield	Hunt harvest	Hunter-days afield	Hunter-days / fox	Foxes / hunter
Beaver	1	4	4	4	1.0	1.0
Box Elder	3	11	0	111	—	0.0
Iron	2	7	170	133	0.8	23.0
Juab	0	0	—	—	—	—
Millard	1	4	0	15	—	0.0
Tooele	3	11	11	111	10.0	1.0
Great Basin totals	10	37	184	372	2.0	5.0
Cache	3	11	7	52	7.0	0.7
Davis	0	0	—	—	—	—
Morgan	1	4	0	52	—	0.0
Piute	0	0	—	—	—	—
Rich	0	0	—	—	—	—
Salt Lake	0	0	—	—	—	—
Sanpete	1	4	4	18	5.0	1.0
Sevier	0	0	—	—	—	—
Summit	1	4	0	4	—	0.0
Utah	2	7	4	44	12.0	0.5
Wasatch	1	4	0	7	—	0.0
Weber	1	4	4	52	14.0	1.0
Rocky Mountain totals	10	37	18	229	12.4	0.5
Daggett	0	0	—	—	—	—
Duchesne	0	0	—	—	—	—
Uintah	1	4	0	111	—	0.0
Uintah Basin totals	1	4	0	111	—	0.0
Carbon	0	0	—	—	—	—
Emery	0	0	—	—	—	—
Garfield	0	0	—	—	—	—
Grand	0	0	—	—	—	—
Kane	1	4	0	0	—	0.0
San Juan	2	7	0	52	—	0.0
Washington	0	0	—	—	—	—
Wayne	0	0	—	—	—	—
Colorado Plateau totals	3	11	0	52	—	0.0
Unknown	1	4	0	52	—	0.0
Statewide totals*	20	74	203	815	4.0	2.8

\*Statewide totals for sample size and hunters afield are not totals of the columns because hunters hunted multiple counties.

## RINGTAIL

Statewide ringtail harvest statistics\*, Utah 1982–2016.

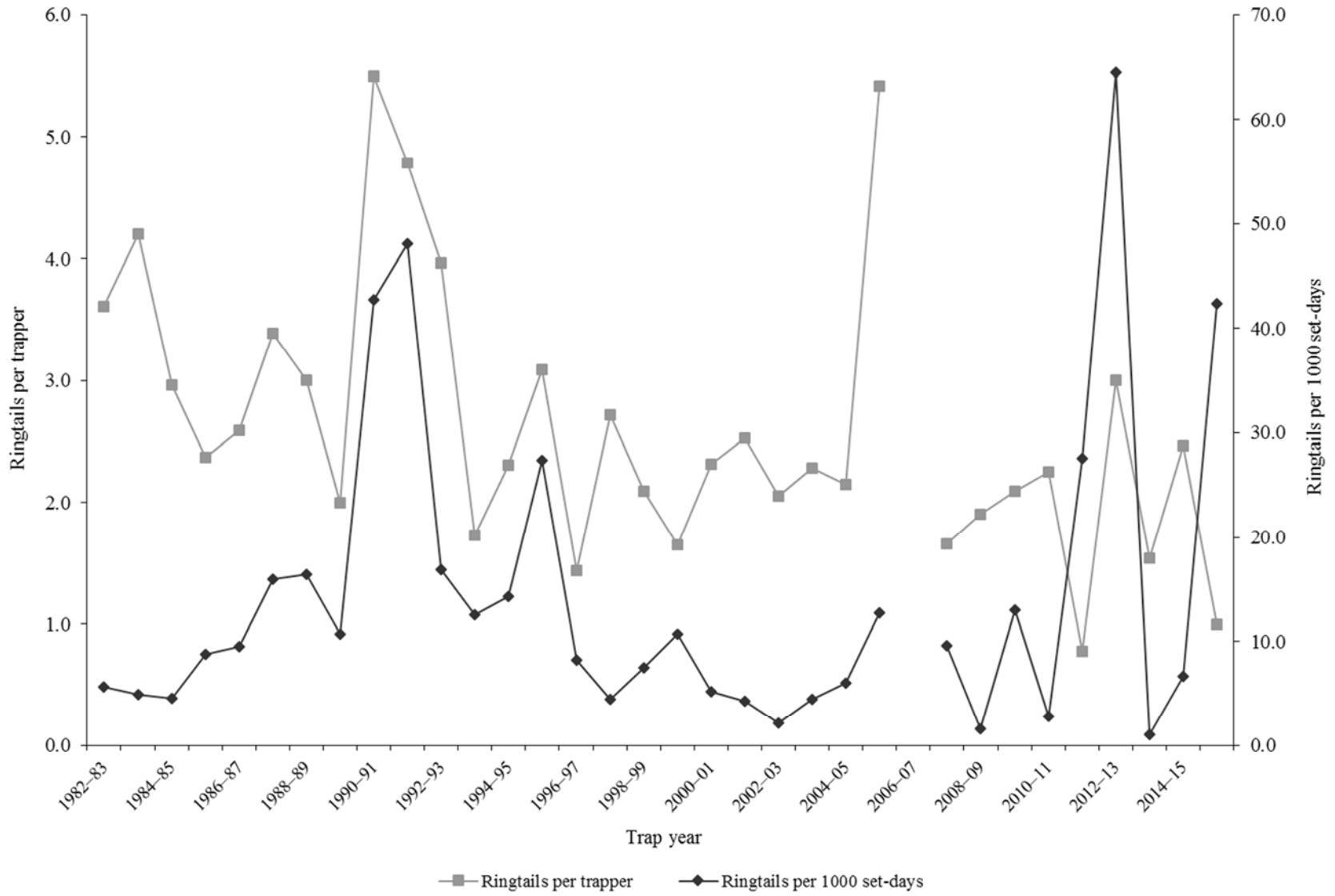
Trap year	Trappers afield	Incidental harvest	Trap harvest	Hunt harvest	Set-days / ringtail	Ringtails / 1000 set-days	Ringtails / trapper	Pelt price (\$)
1982–83	90	—	325	—	176	5.7	3.6	4.40
1983–84	90	—	378	—	203	4.9	4.2	3.96
1984–85	85	—	252	—	218	4.6	3.0	3.15
1985–86	68	—	161	—	114	8.8	2.4	2.69
1986–87	79	—	205	—	105	9.6	2.6	3.64
1987–88	79	—	268	—	62	16.0	3.4	2.40
1988–89	62	—	186	—	61	16.4	3.0	5.70
1989–90	66	—	132	—	93	10.7	2.0	2.65
1990–91	18	—	99	—	23	42.8	5.5	3.50
1991–92	46	—	220	—	21	48.1	4.8	3.22
1992–93	27	—	107	—	59	16.9	4.0	3.97
1993–94	37	—	64	—	80	12.6	1.7	4.04
1994–95	69	—	159	—	70	14.3	2.3	6.41
1995–96	44	—	136	—	37	27.4	3.1	6.96
1996–97	32	—	46	—	122	8.2	1.4	11.68
1997–98	21	—	57	—	227	4.4	2.7	2.99
1998–99	66	—	138	—	134	7.5	2.1	4.17
1999–00	61	—	101	—	93	10.7	1.7	7.03
2000–01	51	—	118	—	194	5.2	2.3	6.00
2001–02	40	—	101	—	236	4.2	2.5	10.29
2002–03	56	—	115	—	474	2.1	2.1	5.20
2003–04	42	—	96	—	223	4.5	2.3	6.83
2004–05	59	—	127	—	165	6.1	2.2	11.12
2005–06	19	—	103	—	79	12.7	5.4	9.31
2006–07	98	—	—	—	—	—	—	12.37
2007–08	65	—	108	—	104	9.6	1.7	14.86
2008–09	31	—	59	—	621	1.6	1.9	10.70
2009–10	22	63	46	—	77	13.0	2.1	15.00
2010–11	16	26	36	—	356	2.8	2.3	18.91
2011–12	18	14	14	—	36	27.6	0.8	12.21
2012–13	7	41	21	0	16	64.5	3.0	15.66
2013–14	24	64	37	0	991	1.0	1.5	17.91
2014–15	13	32	32	0	150	6.7	2.5	17.27
2015–16	18	52	18	0	24	42.4	1.0	12.56
Average	48	42	123	0	171	14.3	2.6	8.20

Prior to the 2005–06 season, harvest by hunting and trapping were not collected separately and trapping harvest estimates included harvest by both hunters and trappers. Trap harvest includes incidental harvest.

\*Trappers and ringtails per trapper include hunters and their harvest. Set-days per ringtail and ringtails per 1000 set-days are based only on trapping activity, and do not include hunt harvest or hunter-days afield.



Statewide ringtail harvest trends, Utah 1982–2016.



## SPOTTED SKUNK

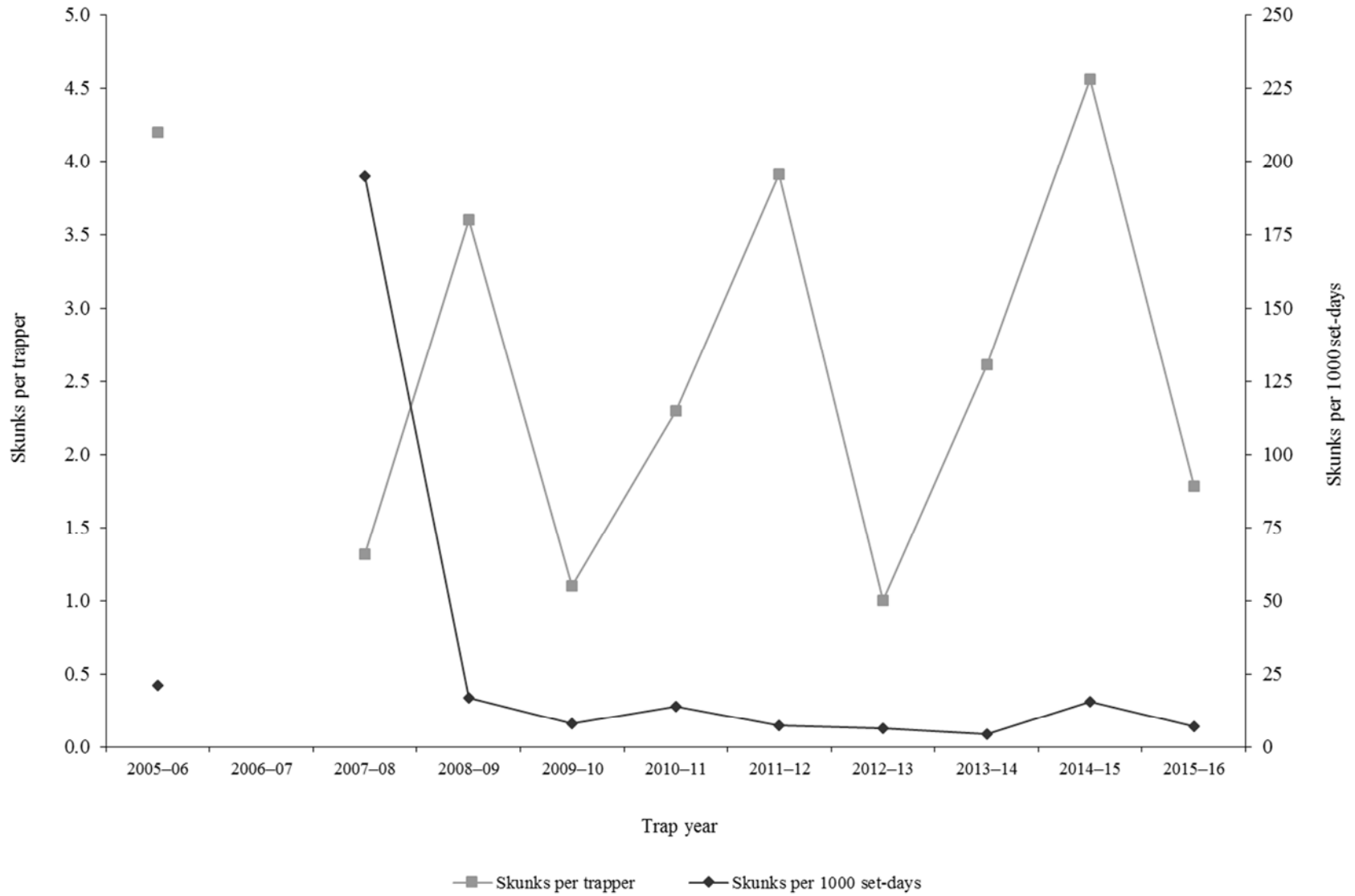
Statewide spotted skunk harvest statistics\*, Utah 2005–2016.

Trap year	Trappers afield	Incidental harvest	Trap harvest	Hunt harvest	Set-days / skunk	Skunks / 1000 set-days	Skunks / trapper	Pelt price (\$)
2005–06	34	—	144	—	47	21.2	4.2	5.37
2006–07	106	—	—	—	—	—	—	12.42
2007–08	34	—	45	—	5	194.8	1.3	12.07
2008–09	67	—	238	—	60	16.8	3.6	8.00
2009–10	19	95	21	—	124	8.1	1.1	15.00
2010–11	33	200	76	—	71	14.0	2.3	15.00
2011–12	11	221	14	29	135	7.4	3.9	8.25
2012–13	17	137	17	0	156	6.4	1.0	14.48
2013–14	13	206	17	17	230	4.3	2.6	13.51
2014–15	25	285	114	0	65	15.5	4.6	9.80
2015–16	33	321	55	4	145	6.9	1.8	6.09
Average	36	209	74	10	104	29.5	2.6	10.91

Prior to 2005–06, spotted skunk harvest and trapping activity were combined with striped skunk. In addition, harvest by hunting and trapping were not collected separately and trapping harvest estimates included harvest by both hunters and trappers. Trap harvest includes incidental harvest.

\*Trappers and skunks per trapper include hunters and their harvest. Set-days per skunk and skunks per 1000 set-days are based only on trapping activity, and do not include hunt harvest or hunter-days afield.

Statewide spotted skunk\* harvest trends, Utah 2005–2016.



\*Prior to 2005–06, spotted skunk harvest and trapping activity were combined with striped skunk.

## STRIPED SKUNK

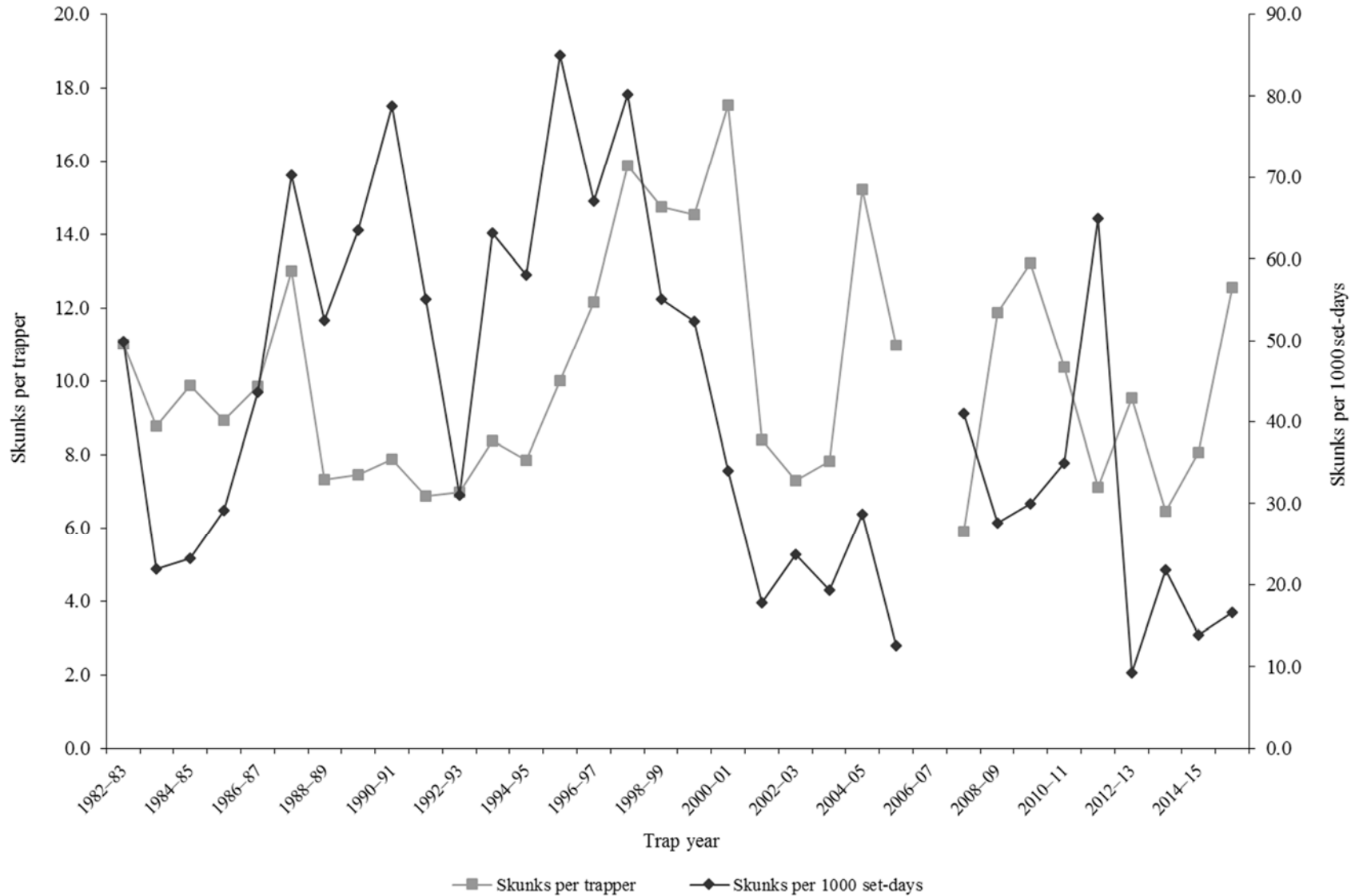
Statewide striped skunk harvest statistics\*, Utah 1982–2016.

Trap year	Trappers afield	Incidental harvest	Trap harvest	Hunt harvest	Set-days / skunk	Skunks / 1000 set-days	Skunks / trapper	Pelt price (\$)
1982–83	140	—	1540	—	20	49.9	11.0	3.00
1983–84	144	—	1262	—	45	22.0	8.8	2.85
1984–85	111	—	1097	—	43	23.3	9.9	2.17
1985–86	195	—	1741	—	34	29.1	8.9	—
1986–87	188	—	1851	—	23	43.6	9.8	—
1987–88	185	—	2404	—	14	70.2	13.0	1.05
1988–89	132	—	966	—	19	52.5	7.3	0.30
1989–90	173	—	1289	—	16	63.6	7.5	0.30
1990–91	82	—	645	—	13	78.8	7.9	0.30
1991–92	151	—	1037	—	18	55.2	6.9	4.00
1992–93	132	—	922	—	32	31.1	7.0	5.30
1993–94	175	—	1465	—	16	63.2	8.4	7.35
1994–95	183	—	1438	—	17	58.1	7.9	9.29
1995–96	175	—	1753	—	12	84.9	10.0	6.63
1996–97	142	—	1726	—	15	67.1	12.2	6.00
1997–98	182	—	2890	—	12	80.2	15.9	4.11
1998–99	219	—	3227	—	18	55.1	14.7	5.67
1999–00	188	—	2730	—	19	52.3	14.5	8.50
2000–01	220	—	3857	—	29	34.0	17.5	8.69
2001–02	214	—	1798	—	56	17.8	8.4	6.79
2002–03	237	—	1732	—	42	23.7	7.3	4.24
2003–04	295	—	2305	—	52	19.3	7.8	10.00
2004–05	280	—	4264	—	35	28.7	15.2	4.64
2005–06	95	—	1043	—	79	12.6	11.0	5.37
2006–07	138	—	—	—	—	—	—	6.07
2007–08	144	—	848	—	24	41.0	5.9	4.52
2008–09	143	—	1697	—	36	27.6	11.9	3.15
2009–10	124	1632	1638	—	33	30.0	13.2	6.47
2010–11	154	1136	1597	—	29	35.0	10.4	5.29
2011–12	107	916	602	160	15	65.0	7.1	4.55
2012–13	137	1159	1241	65	108	9.3	9.5	5.01
2013–14	108	1272	654	44	46	21.8	6.5	6.96
2014–15	82	1230	645	16	72	13.9	8.1	4.94
2015–16	111	818	1187	206	60	16.6	12.5	4.40
Average	161	1166	1669	98	33	41.7	10.1	4.93

Prior to 2005–06, harvest and trapping activity included both striped skunk and spotted skunk. In addition, harvest by hunting and trapping were not collected separately and trapping harvest estimates included harvest by both hunters and trappers. Trap harvest includes incidental harvest.

\*Trappers and skunks per trapper include hunters and their harvest. Set-days per skunk and skunks per 1000 set-days are based only on trapping activity, and do not include hunt harvest or hunter-days afield.

Statewide striped skunk\* harvest trends, Utah 1982–2016.



\*Prior to 2005–06, harvest and trapping activity included both striped skunk and spotted skunk.

Striped skunk trapping harvest statistics by county and ecoregion, Utah 2015–16.

County	n	Trappers afield	Trap harvest	Traps set	Trapping days	Set-days	Set-days / skunk	Skunks / 1000 set-days	Skunks / trapper
Beaver	1	4	7	11	221	664	90.0	11.1	2.0
Box Elder	3	11	70	155	182	6182	88.3	11.3	6.3
Iron	0	0	—	—	—	—	—	—	—
Juab	0	0	—	—	—	—	—	—	—
Millard	0	0	—	—	—	—	—	—	—
Tooele	1	4	0	4	26	26	—	0.0	0.0
Great Basin totals	5	18	77	170	429	6871	88.8	11.3	4.2
Cache	4	15	265	240	726	10487	39.5	25.3	18.0
Davis	0	0	—	—	—	—	—	—	—
Morgan	0	0	—	—	—	—	—	—	—
Piute	0	0	—	—	—	—	—	—	—
Rich	1	4	273	37	221	2212	8.1	123.3	74.0
Salt Lake	1	4	4	4	4	4	1.0	1000.0	1.0
Sanpete	1	4	37	7	166	332	9.0	111.1	10.0
Sevier	0	0	—	—	—	—	—	—	—
Summit	0	0	—	—	—	—	—	—	—
Utah	1	4	18	7	74	147	8.0	125.0	5.0
Wasatch	0	0	—	—	—	—	—	—	—
Weber	2	7	177	162	188	4202	23.8	42.1	24.0
Rocky Mountain totals	10	37	774	457	1379	17384	22.5	44.5	21.0
Daggett	0	0	—	—	—	—	—	—	—
Duchesne	1	4	44	22	111	664	15.0	66.7	12.0
Uintah	2	7	151	129	593	17713	117.2	8.5	20.5
Uintah Basin totals	3	11	195	151	704	18376	94.1	10.6	17.7
Carbon	0	0	—	—	—	—	—	—	—
Emery	0	0	—	—	—	—	—	—	—
Garfield	0	0	—	—	—	—	—	—	—
Grand	2	7	111	41	1054	6215	56.2	17.8	15.0
Kane	0	0	—	—	—	—	—	—	—
San Juan	1	4	4	328	229	20341	5518.0	0.2	1.0
Washington	3	11	26	92	280	2440	94.6	10.6	2.3
Wayne	0	0	—	—	—	—	—	—	—
Colorado Plateau totals	6	22	141	461	1563	28996	207.0	4.8	6.3
Unknown	0	0	—	—	—	—	—	—	—
Statewide totals*	24	88	1187	1239	4075	71628	60.3	16.6	13.4

\*Statewide totals for sample size and trappers afield are not totals of the columns because trappers trapped multiple counties.

## WEASEL

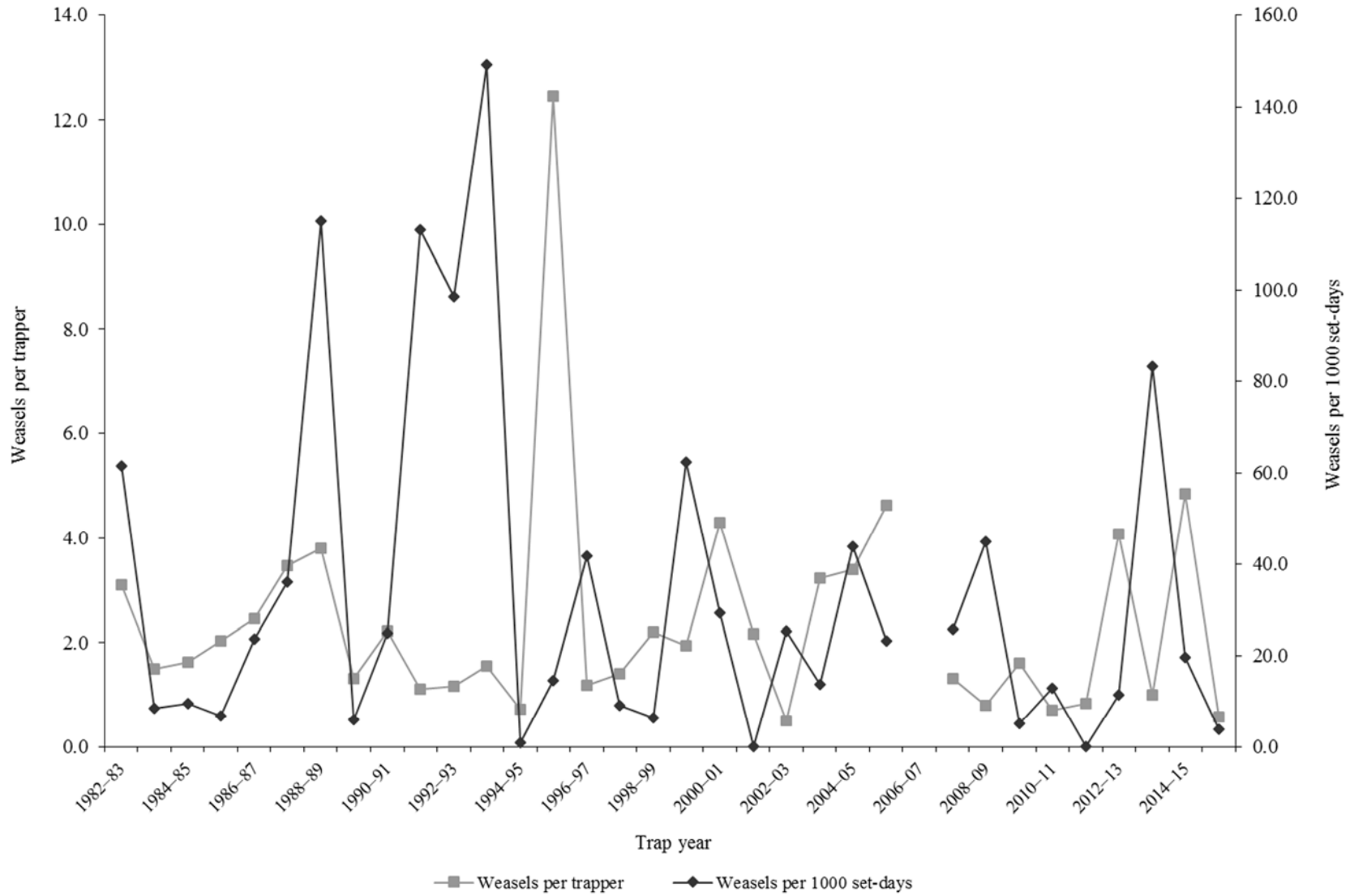
Statewide weasel harvest statistics\*, Utah 1982–2016.

Trap year	Trappers afield	Incidental harvest	Trap harvest	Hunt harvest	Set-days / weasel	Weasels / 1000 set-days	Weasels / trapper	Pelt price (\$)
1982–83	19	—	59	—	16	61.5	3.1	1.00
1983–84	22	—	33	—	117	8.5	1.5	0.00
1984–85	46	—	75	—	106	9.4	1.6	0.75
1985–86	33	—	67	—	149	6.7	2.0	0.00
1986–87	50	—	123	—	42	23.6	2.5	1.50
1987–88	61	—	212	—	28	36.1	3.5	1.18
1988–89	24	—	91	—	9	115.0	3.8	0.25
1989–90	25	—	33	—	166	6.0	1.3	0.25
1990–91	14	—	31	—	40	24.8	2.2	0.30
1991–92	17	—	19	—	9	113.1	1.1	0.30
1992–93	24	—	28	—	10	98.6	1.2	0.30
1993–94	20	—	31	—	7	149.0	1.6	5.11
1994–95	18	—	13	—	1189	0.8	0.7	1.57
1995–96	24	—	299	—	69	14.6	12.5	3.08
1996–97	11	—	13	—	24	41.7	1.2	7.40
1997–98	20	—	28	—	111	9.0	1.4	3.03
1998–99	15	—	33	—	157	6.4	2.2	5.50
1999–00	34	—	66	—	16	62.4	1.9	—
2000–01	36	—	155	—	34	29.3	4.3	8.50
2001–02	6	—	13	—	0	—	2.2	—
2002–03	6	—	3	—	39	25.4	0.5	4.76
2003–04	18	—	58	—	73	13.8	3.2	—
2004–05	25	—	85	—	23	43.9	3.4	2.90
2005–06	41	—	190	—	43	23.3	4.6	—
2006–07	49	—	—	—	—	—	—	6.26
2007–08	11	—	15	—	39	25.6	1.3	2.99
2008–09	14	—	11	—	22	44.9	0.8	—
2009–10	29	13	47	—	196	5.1	1.6	7.64
2010–11	23	20	17	—	78	12.8	0.7	7.21
2011–12	25	4	0	21	—	0.0	0.8	4.58
2012–13	27	21	110	0	87	11.5	4.1	—
2013–14	3	10	3	0	12	83.3	1.0	5.00
2014–15	13	13	63	0	51	19.7	4.8	3.89
2015–16	26	15	11	4	258	3.9	0.6	3.06
Average	24	14	62	5	101	35.3	2.4	3.15

Prior to the 2005–06 season, harvest by hunting and trapping were not collected separately and trapping harvest estimates included harvest by both hunters and trappers. Trap harvest includes incidental harvest.

\*Trappers and weasels per trapper include hunters and their harvest. Set-days per weasel and weasels per 1000 set-days are based only on trapping activity, and do not include hunt harvest or hunter-days afield.

Statewide weasel harvest trends, Utah 1982–2016.





**APPENDIX: UTAH FURBEARER MANAGEMENT ECOREGIONS**

